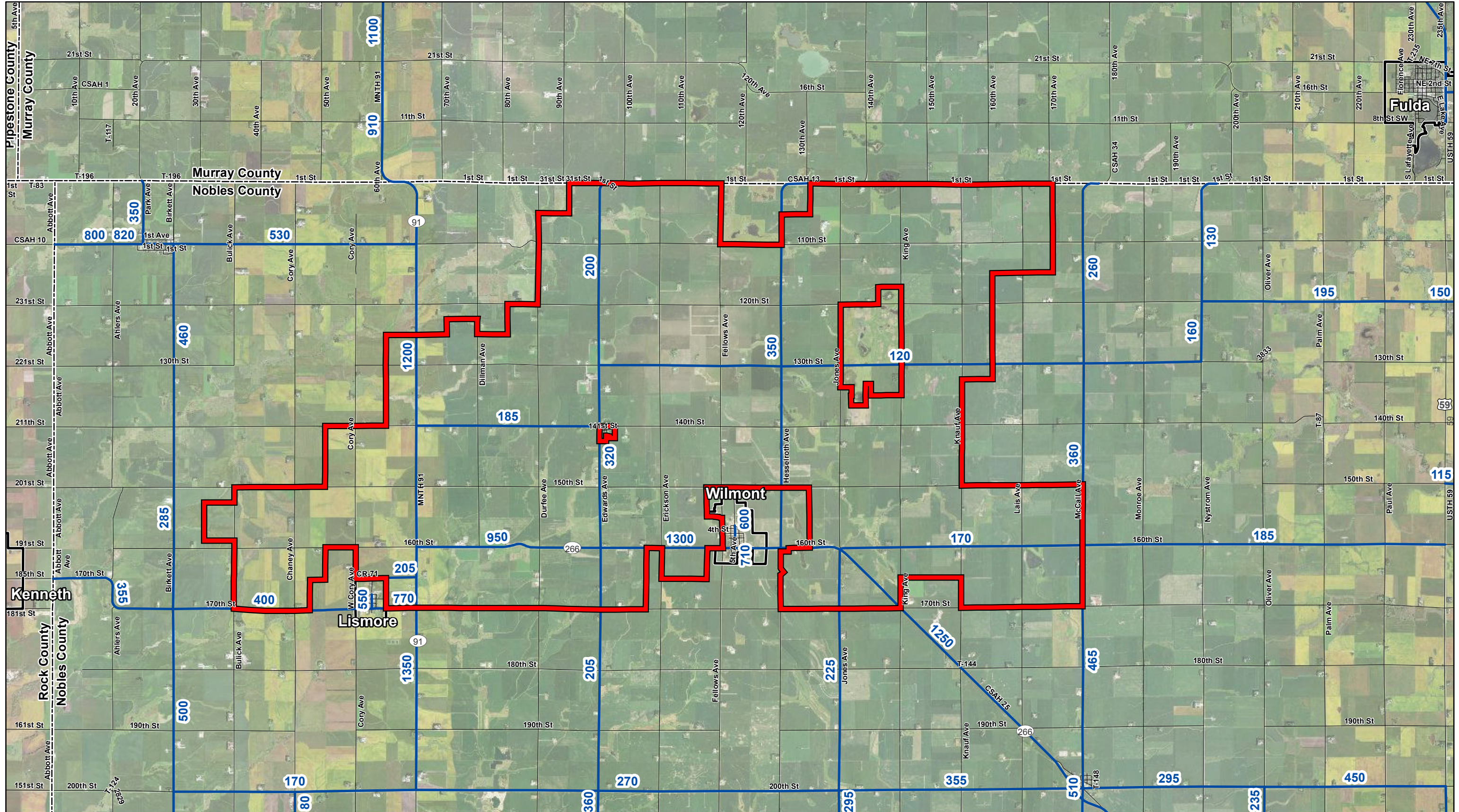


Appendix A. Maps 10-19



Data Source(s): Westwood (2017); Geospatial Data Gateway (various dates); NAIP Basemap; Imagery (accessed 2018); ESRI (2012); MnDOT (various dates); Census Bureau (2015). Data and map are approximate.

Legend

- Project Boundary
- County Boundary
- Municipal Boundary
- AADT Segment
- Road



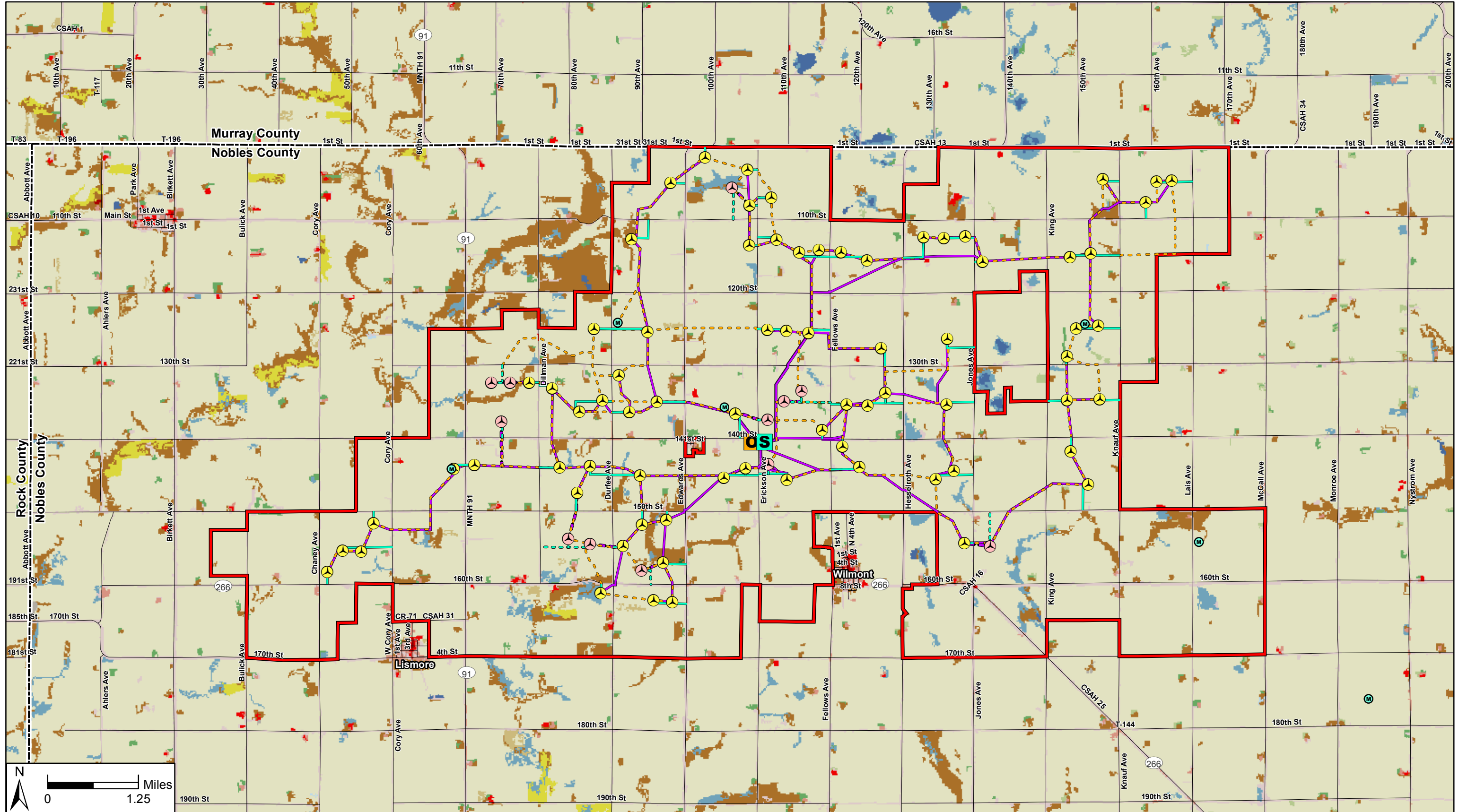
Nobles 2 Wind Project

Nobles County, Minnesota
Annual Average Daily
Traffic (AADT)

Revised May 2018 - Map 10

**NOBLES 2
POWER PARTNERS, LLC**

Westwood
Multi-Disciplined
Surveying & Engineering



Map Document: N:\0001661_00GIS\SitePermit\Exhibits\N2_LandCover_Map12_180529.mxd 5/29/2018 2:02:49 PM

NOBLES 2 POWER PARTNERS, LLC

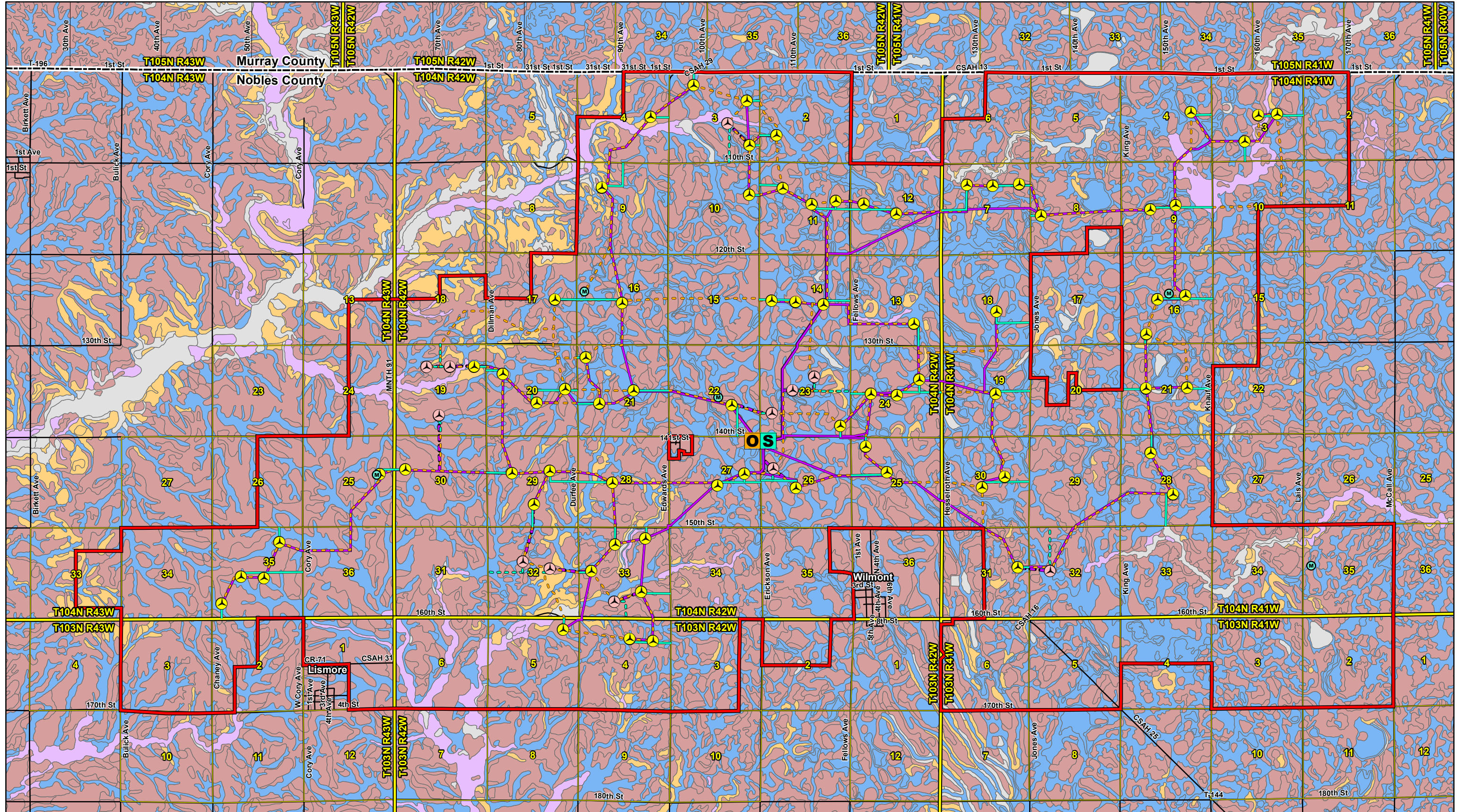
Westwood
Multi-Disciplined
Surveying & Engineering

Legend	
	Project Boundary
	County Boundary
	Proposed Turbine
	Proposed Turbine Alternate
	Temporary Met Tower
	Proposed O&M
	Proposed Substation
	Road
	Proposed Access Road
	Proposed Access Road Alternate
	Proposed Collection
	Proposed Collection Alternate
	Proposed Crane Path
	Unclassified
	Open Water
	Developed, Open Space
	Developed, Low Intensity
	Developed, Medium Intensity
	Developed, High Intensity
	Barren Land
	Deciduous Forest
	Evergreen Forest
	Mixed Forest
	Shrub/Scrub
	Herbaceous
	Hay/Pasture
	Cultivated Crops
	Woody Wetlands
	Emergent Herbaceous Wetlands

Nobles 2 Wind Project
Nobles County, Minnesota

Land Cover

Revised May 2018 - Map 12



Data Source(s): Westwood (2017); Geospatial Data Gateway (various dates); Minnesota NAIP Imagery (accessed 2016); ESRI (2012); MnDOT (various dates); U.S. Geological Survey (2011); Accessed (2017). Data and map are approximate.

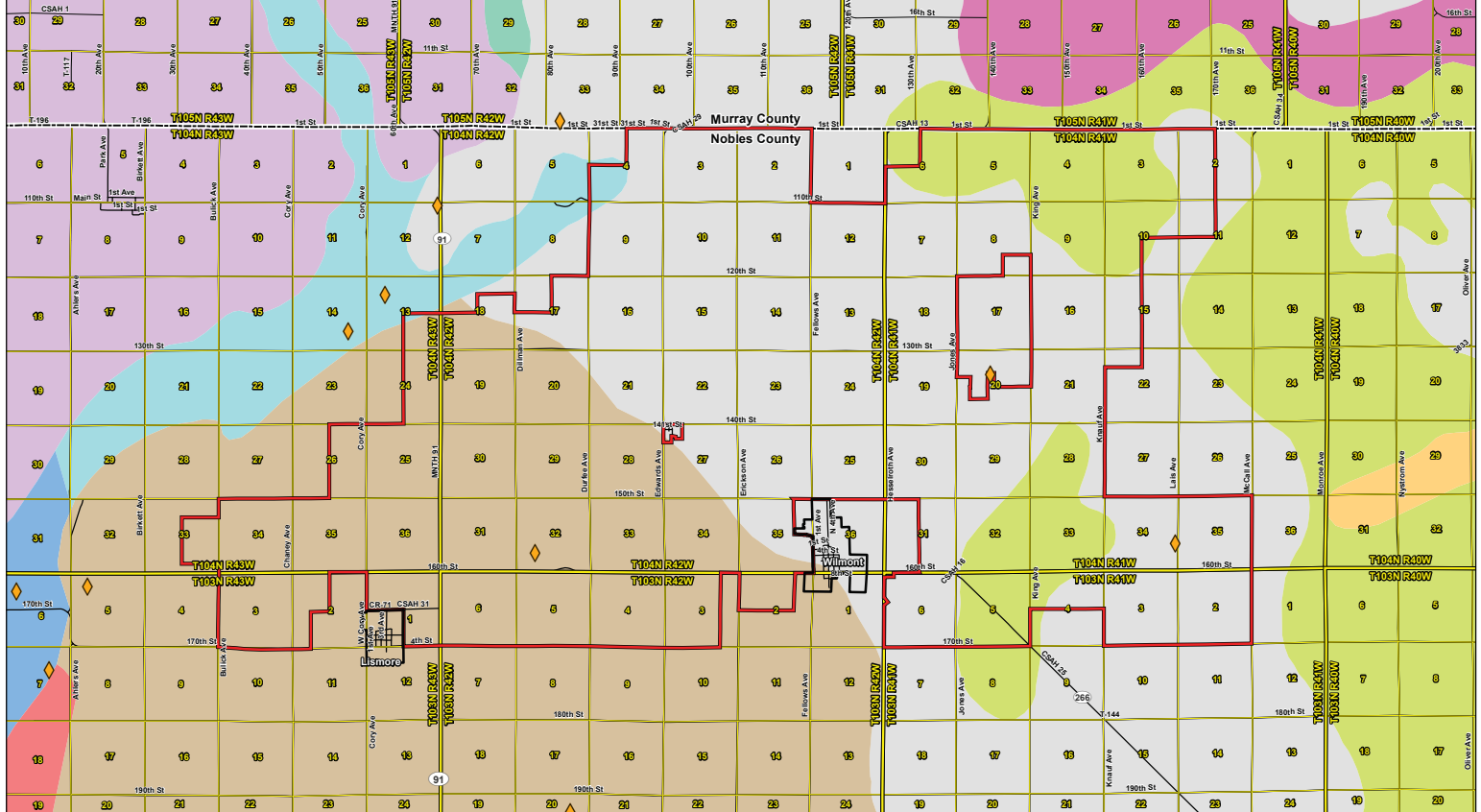
- | | | | | |
|----------------------------|---------------------|--------------------------------|-----------------------|--|
| Project Boundary | Proposed O&M | Proposed Access Road | County Boundary | All areas are prime farmland (59.3%) |
| Proposed Turbine | Proposed Substation | Proposed Access Road Alternate | PLS Township Boundary | Farmland of statewide importance (3.0%) |
| Proposed Turbine Alternate | | Proposed Collection | PLS Section Boundary | Not prime farmland (1.2%) |
| Temporary Met Tower | | Proposed Collection Alternate | Road | Prime farmland if drained (34.4%) |
| | | Proposed Crane Path | | Prime farmland if protected from flooding or not frequently flooded during the growing season (2.0%) |



Nobles 2 Wind Project
 Nobles County, Minnesota
 Prime Farmland
 Revised May 2018 - Map 13

NOBLES 2 POWER PARTNERS, LLC
 Westwood
 Multi-Disciplined Surveying & Engineering

Map Document: N:\0001661_00GIS\GIS\Permit\Exhibits\N2_PrimeFarmland\1B_Map13_180529.mxd 5/29/2018 2:10:00 PM



Map Document: N:\001198\1020252525\Map\Nobles 2 Wind\Map_H_120017.mxd, B:\62017_4\03-31-PM

Map Sources: Westwood (2017), Geoplot Data Gateway (various dates), ESRI (2012), Census Bureau (2010), National Response Conservation Service (2010), U.S. Geological Survey (2011), Arcswatch (2017). Data and map are approximate.

Nobles 2 Power Partners, LLC
Westwood
Professional Services, Inc.
Mining & Geology

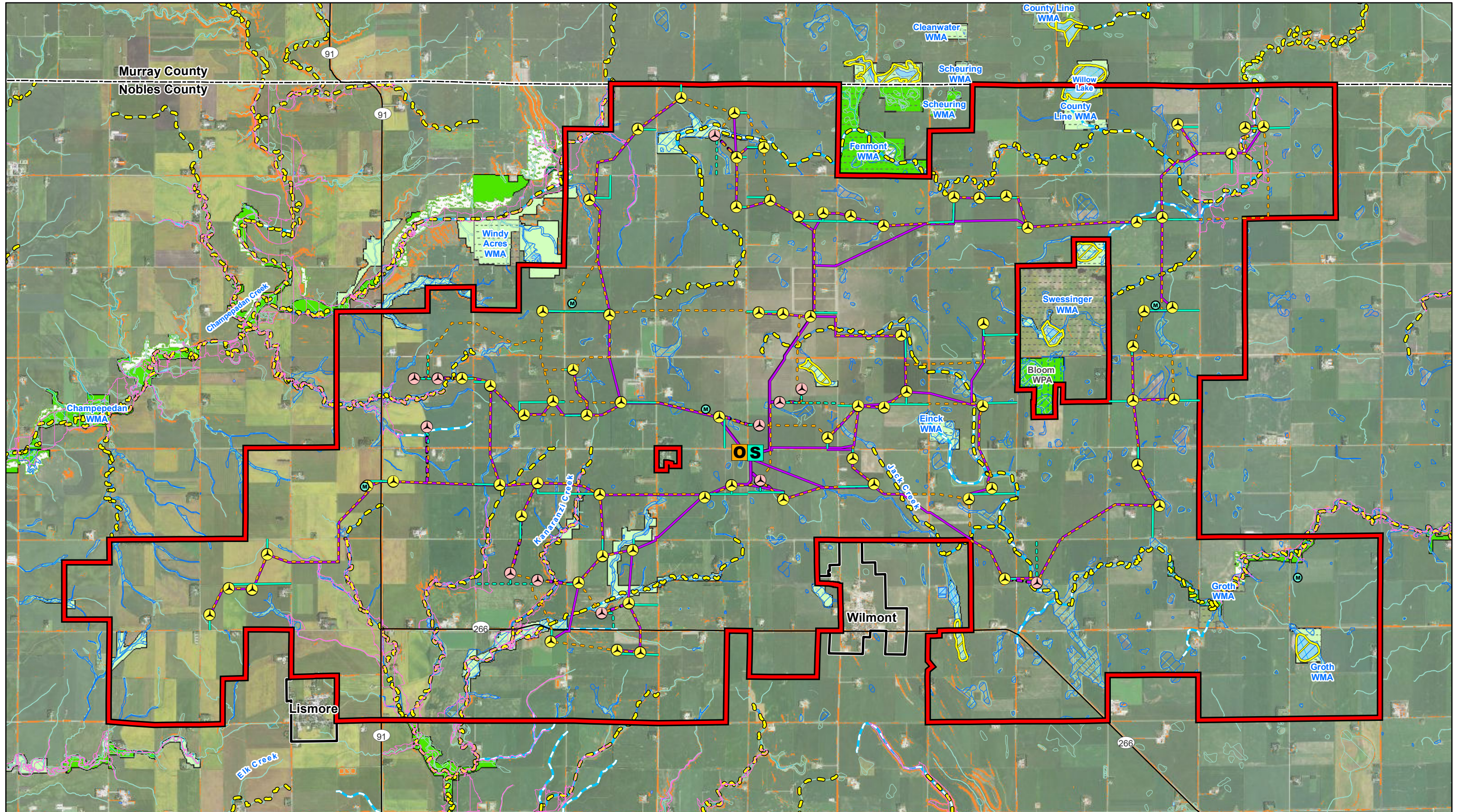
Legend		General Soils	
Project Boundary	County Boundary	Flandreau Evely D: man (s3554)	Ienna Tran burg Hidewood (s3545)
Municipal Boundary	PLS Township Boundary	Langhei Hamery Barnes (s3467)	Waldorf Lura Collinwood Clarion (s3569)
Gravel Pits	PLS Section Boundary	Spillville Millington Comfrey (s3553)	Webster Nicollet Clarion Canisteo (s1750)
Road		Storden Evely (s3556)	Webster Nicollet Glencoe Crippin Canisteo (s3557)
		Talcot Millington Fairhaven (s3551)	Wilmington Letri Evely (s3714)

Nobles 2 Wind Project
Nobles County, Minnesota

Soils and Mining Resources

N
0 1.25 Miles

Map 14



Data Source(s): Westwood (2017); Minnesota NAIP Imagery (Accessed 2016); ESRI (2012); MNDNR (Various Dates); NED (2016); Ducks Unlimited; and St. Mary's University of Minnesota (2015); USGS NHD Dataset (2013); Census Bureau (2015). Data and map are approximate.

NOBLES 2 POWER PARTNERS, LLC
Westwood
Multi-Disciplinary
Surveying & Engineering

- Legend**
- Project Boundary
 - County Boundary
 - Municipal Boundary
 - Proposed O&M
 - S Proposed Substation
 - O Proposed Turbine
 - A Proposed Turbine Alternate
 - M Temporary Met Tower
 - Proposed Access Road
 - Proposed Access Road Alternate
 - Proposed Collection
 - Proposed Collection Alternate
 - Proposed Crane Path
 - PWI Watercourse
 - PWI Basin
 - Drainage Ditch
 - Desktop Wetlands
 - NWI Wetland
 - NHD Flowline
 - NHD Waterbody
 - FEMA Floodplain
 - Native Plant Community
 - Steep Slope (>=10%)
 - Wildlife Management Area (WMA)
 - Waterfowl Production Area (WPA)
 - MBS Sites of Biodiversity Significance
 - High
 - Moderate
 - Below

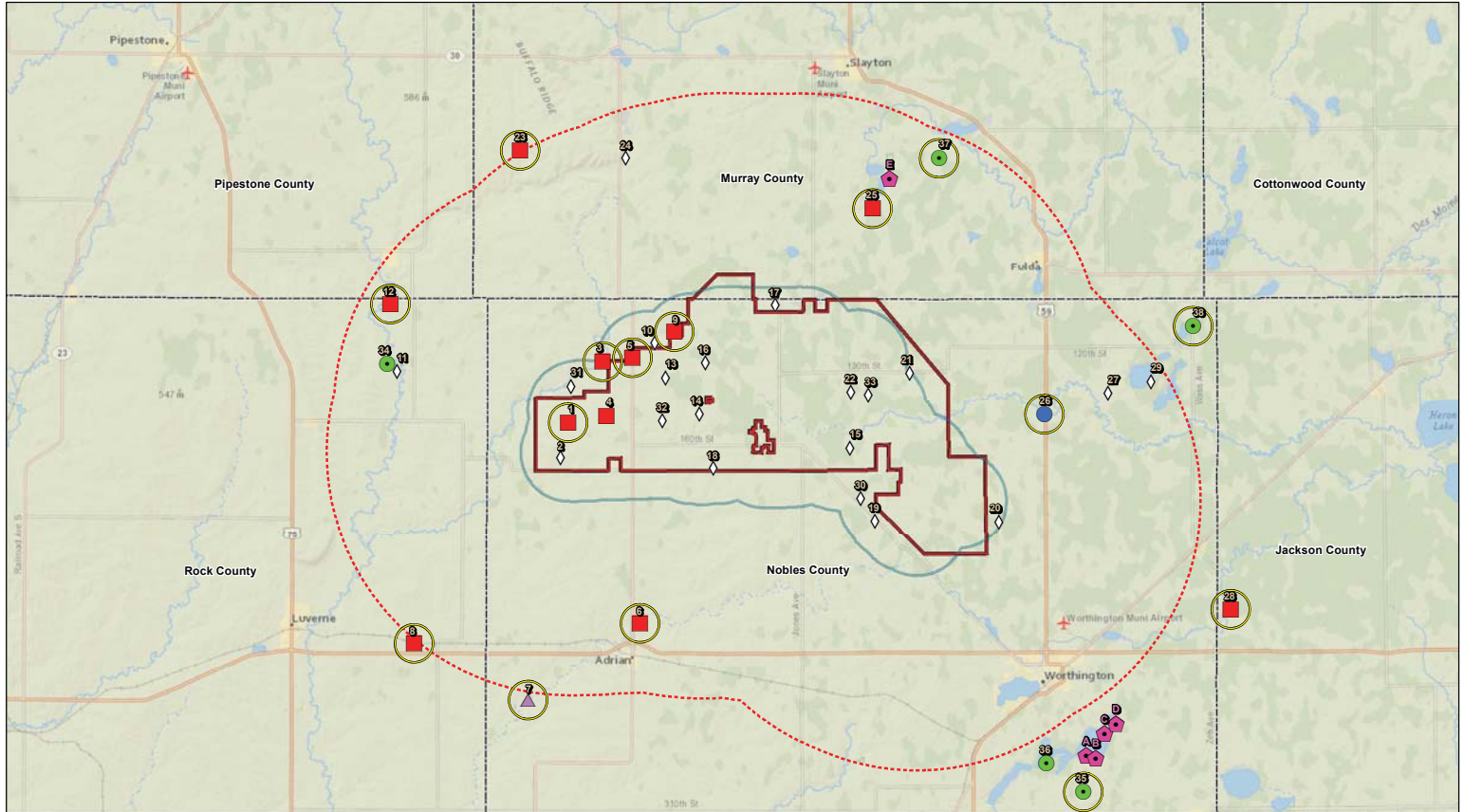
Nobles 2 Wind Project
Nobles County, Minnesota

Water Resources, Steep Slopes, and Rare Features

Revised May 2018 - Map 16



Map Document: N:\0001661\GIS\Permit\Exhibits\N2_Water\Slopes_RareFeatures_Map16_180529.mxd, 5/29/2018, 3:13:01 PM



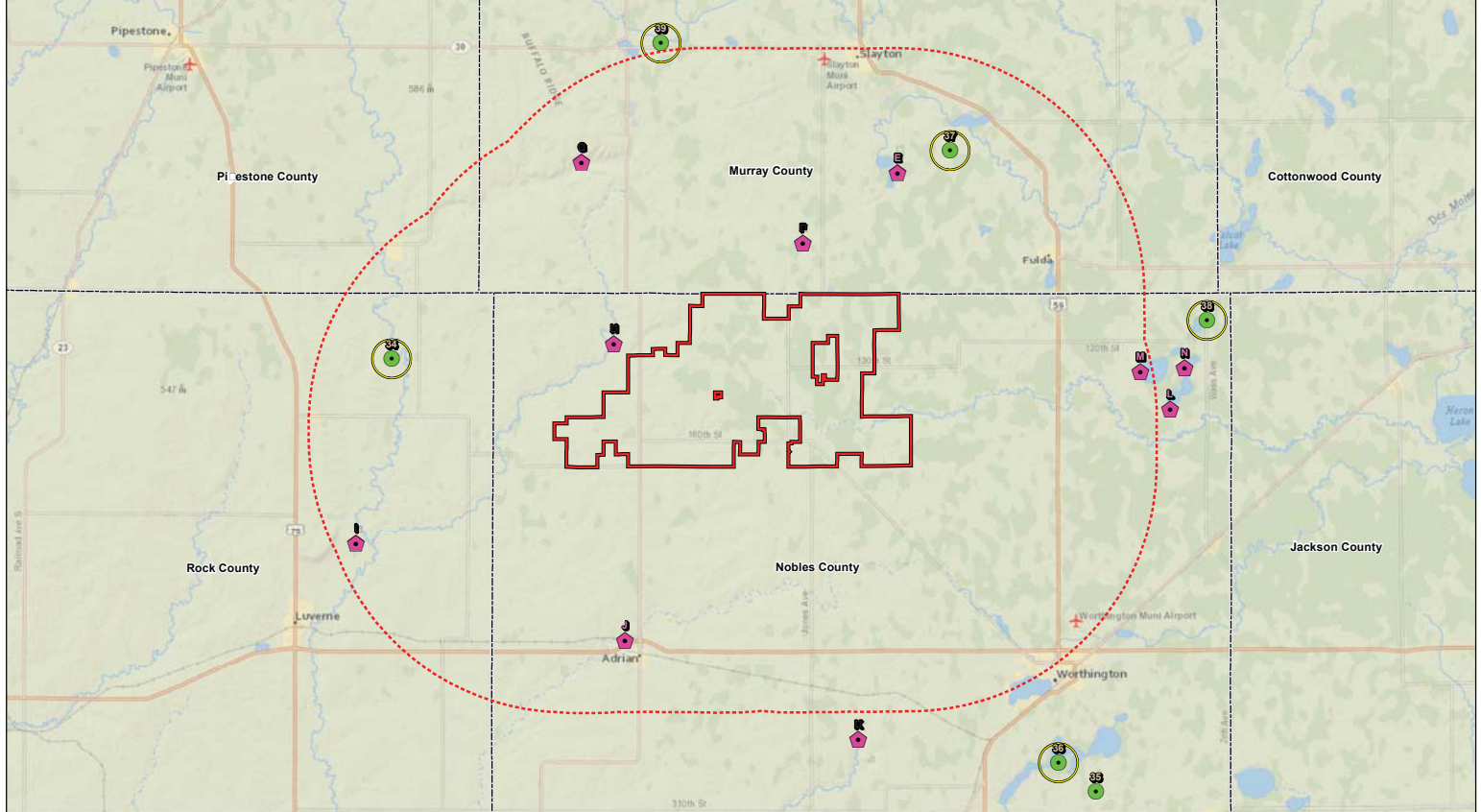
Data Source(s): Westwood (2017); Geospatial Data Gateway (various dates); Minnesota NADP Imagery (acquired 2016); ESRI (2012); MNCOT (various dates); U.S. Geological Survey (2011). Data and map are approximate.

NOBLES 2 POWER PARTNERS, LLC
 Westwood
 THE ONLY ONE YOU CAN RELY ON FOR ENERGY CONSULTING

- Legend**
- Previous Project Boundary
 - Great Blue Heron Rookery
 - Bald Eagle Nest
 - Nest ID
 - 10-Mile Nest Survey Buffer
 - Great Horned Owl Nest
 - Incidental Bald Eagle Observation
 - Incidental Observation ID
 - 2-Mile Nest Survey Buffer
 - Red-Tailed Hawk Nest
 - Unknown Species Nest
 - Active Nest



Nobles 2 Wind Project
 Nobles County, Minnesota
 Bald Eagle and General Raptor
 Nest Locations (2016)
 Map 17



Data Source(s): Westwood (2017), Geospatial Data Gateway (various dates), Minnesota NAD Imagery (various dates), ESRI (2012), MDCOT (various dates), U.S. Geological Survey (2011). Data and map are approximate.

NOBLES 2 POWER PARTNERS, LLC
Westwood

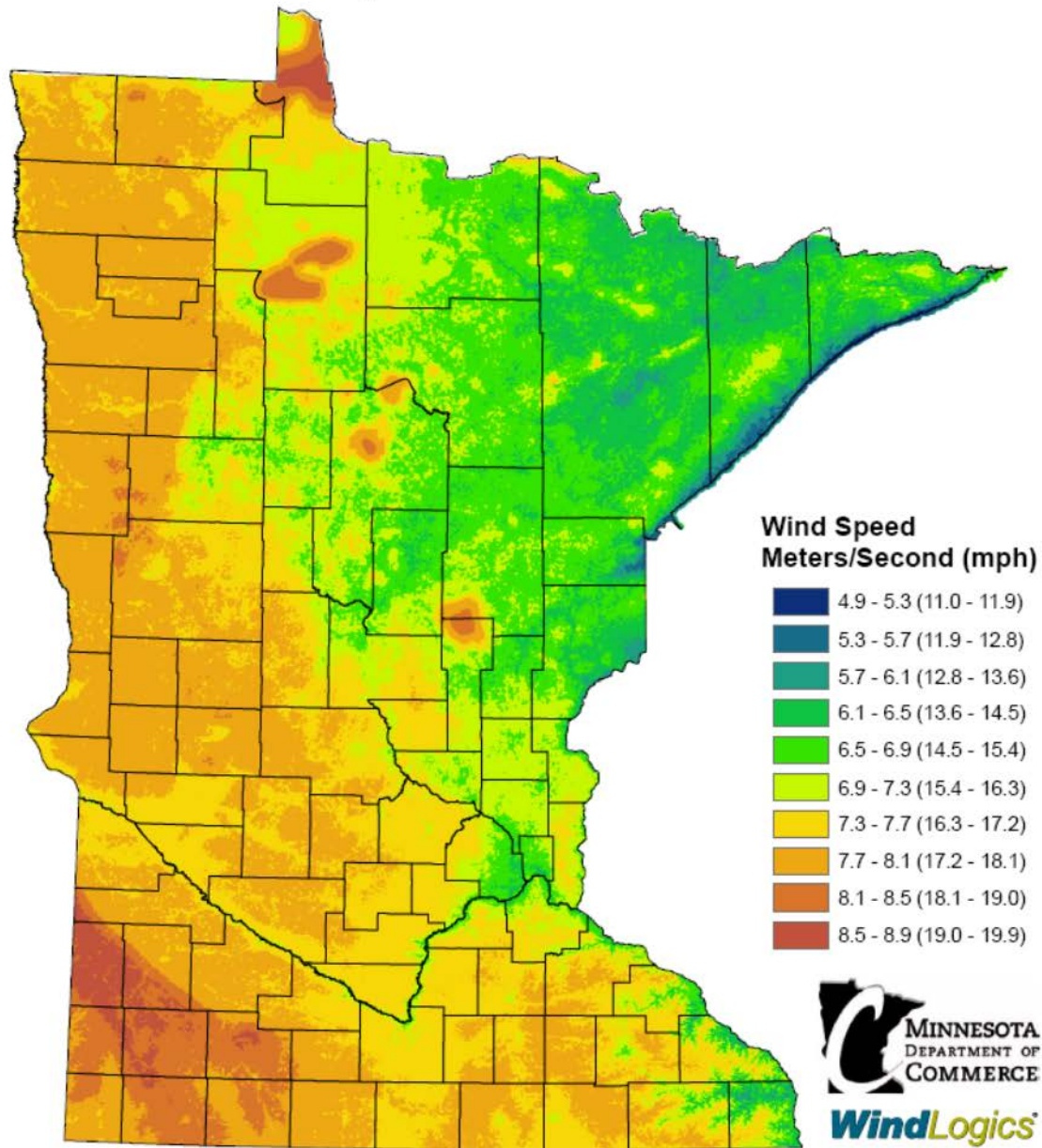
Legend

- Project Boundary
- 10-Mile Nest Survey Buffer
- County Boundary
- Bald Eagle Nest
- Incidental Bald Eagle Observation
- Incidental Observation ID
- Active Nest
- Nest ID



Nobles 2 Wind Project
Nobles County, Minnesota
Bald Eagle Nest Locations (2017)
Map 18

Minnesota's Wind Resource by Wind Speed at 80 Meters



This map has been prepared under contract by WindLogics for the Department of Commerce using the best available weather data sources and the latest physics-based weather modeling technology and statistical techniques. The data that were used to develop the map have been statistically adjusted to accurately represent long-term (40 year) wind speeds over the state, thereby incorporating important decadal weather trends and cycles. Data has been averaged over a cell area 500 meters square, and within any one cell there could be features that increase or decrease the values shown on this map. This map shows the general variation of Minnesota's wind resource and should not be used to determine the performance of specific projects.

January 2006

Map 19: State Wind Resources