

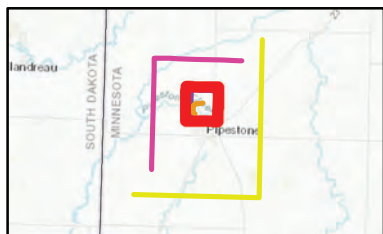
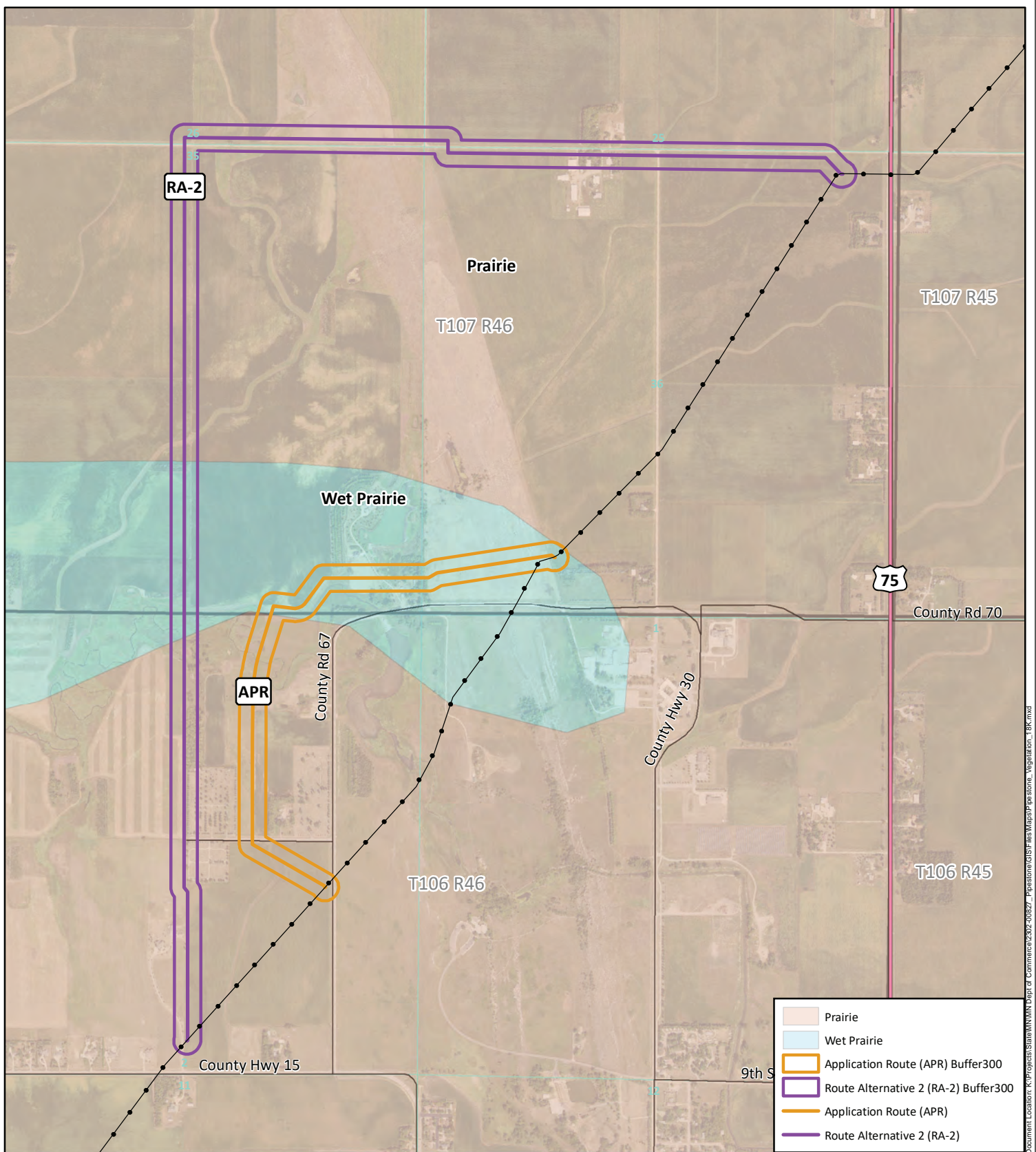


PIPESTONE PIPELINE REROUTE PROJECT

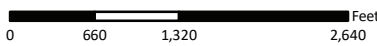
DOCKET NUMBER: PPL-23-109

APPLICANT: MAGELLAN PIPELINE COMPANY L.P.

VOLUME II - APPENDIX A-4 FIGURE: PRE-SETTLEMENT VEGETATION



Pre-Settlement Vegetation
 Pipestone Pipeline Reroute Project
 Docket Number: PPL-23-109
 Pipestone, MN



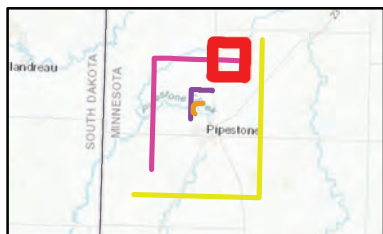
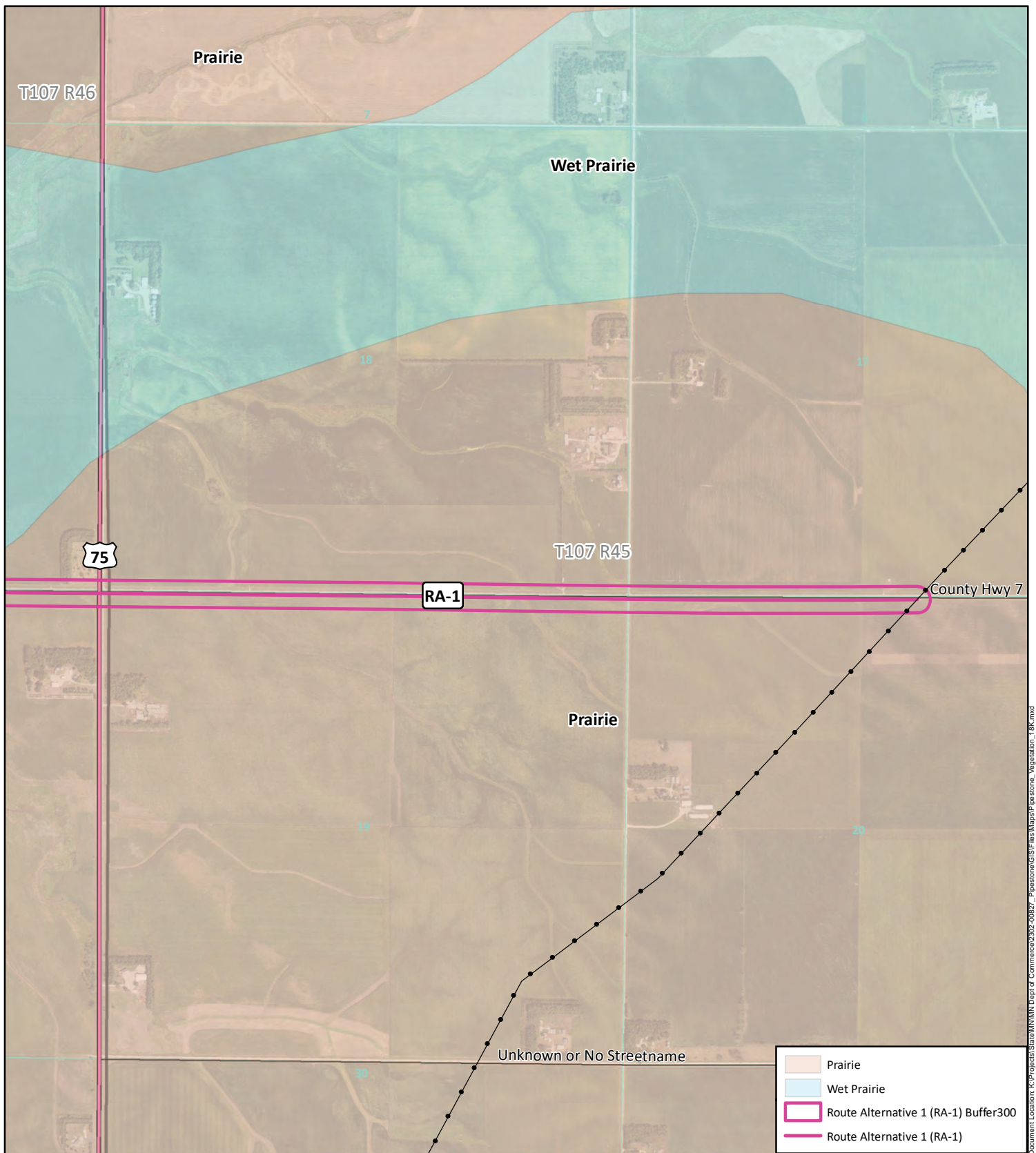
Data Source: US Fish and Wildlife,
 State of MN, NRCS, & KLJ



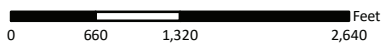
- Existing Magellan Pipeline
- Interstate
- US Highway
- State Highway
- Roads
- Township
- Sections

KLJ Project Number: 2302-00827
 Date Created: 12/6/2023
 Created By: duanekaul

Document Location: K:\Projects\State\MN\Dept of Commerce\2302-00827_Pipestone\GIS\Final\Map\Pre-Settlement_Vegetation_18k.mxd



Pre-Settlement Vegetation
 Pipestone Pipeline Reroute Project
 Docket Number: PPL-23-109
 Pipestone, MN



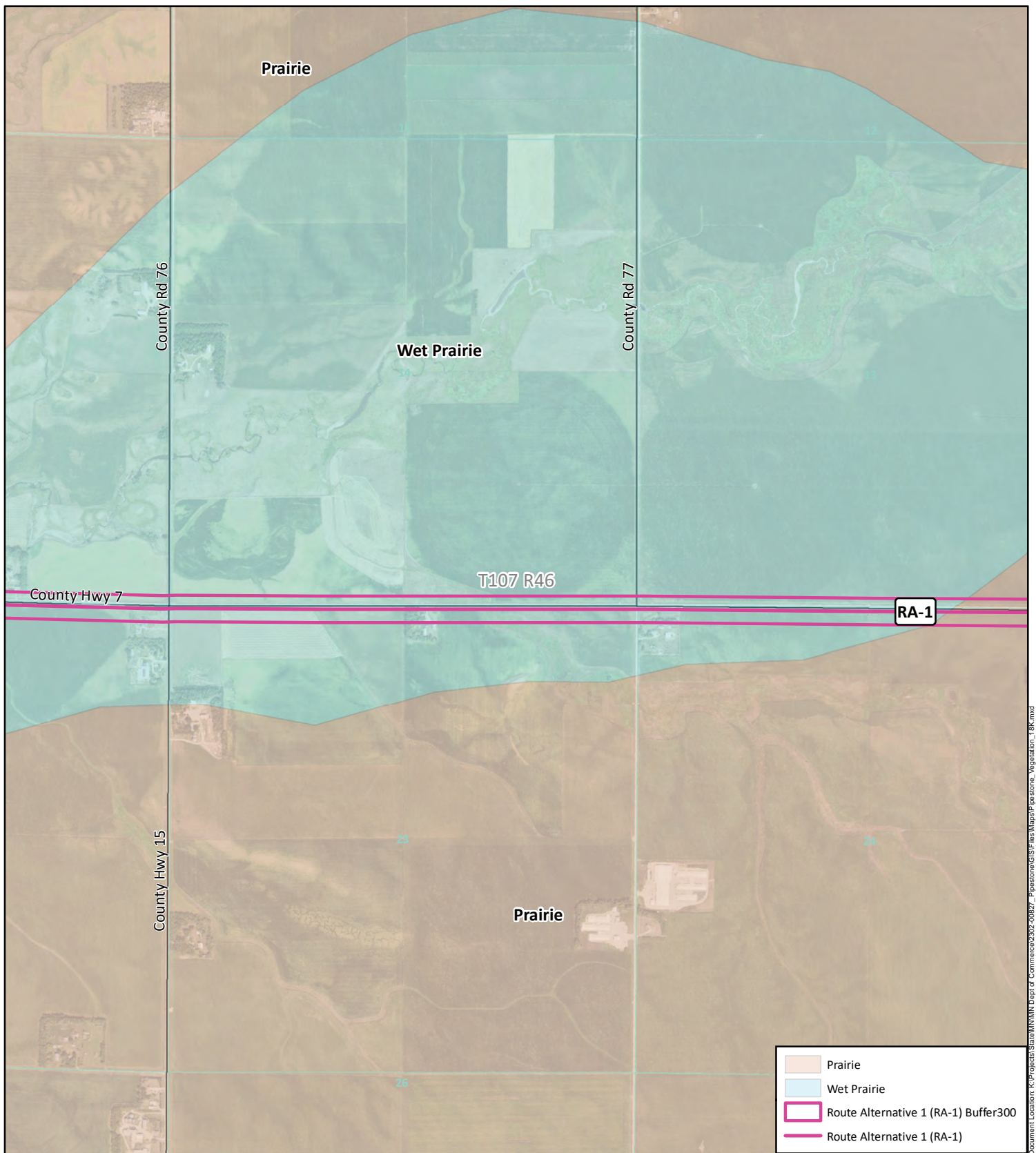
Data Source: US Fish and Wildlife,
 State of MN, NRCS, & KLJ



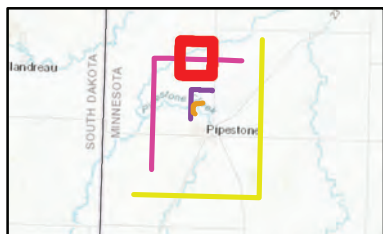
- Existing Magellan Pipeline
- Interstate
- US Highway
- State Highway
- Roads
- Township
- Sections

KLJ Project Number: 2302-00827
 Date Created: 12/6/2023
 Created By: duanekaul

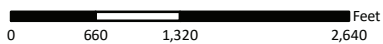
Document Location: K:\Projects\State\MN\Dept of Commerce\2302-00827_Pipestone\GIS\Fish\Map\Pre-Settlement_Vegetation_18k.mxd



Document Location: K:\Projects\State\MN\Dept of Commerce\2302-00827_Pipestone\GIS\Fish\Map\Pipestone_Vegetation_18k.mxd



Pre-Settlement Vegetation
 Pipestone Pipeline Reroute Project
 Docket Number: PPL-23-109
 Pipestone, MN

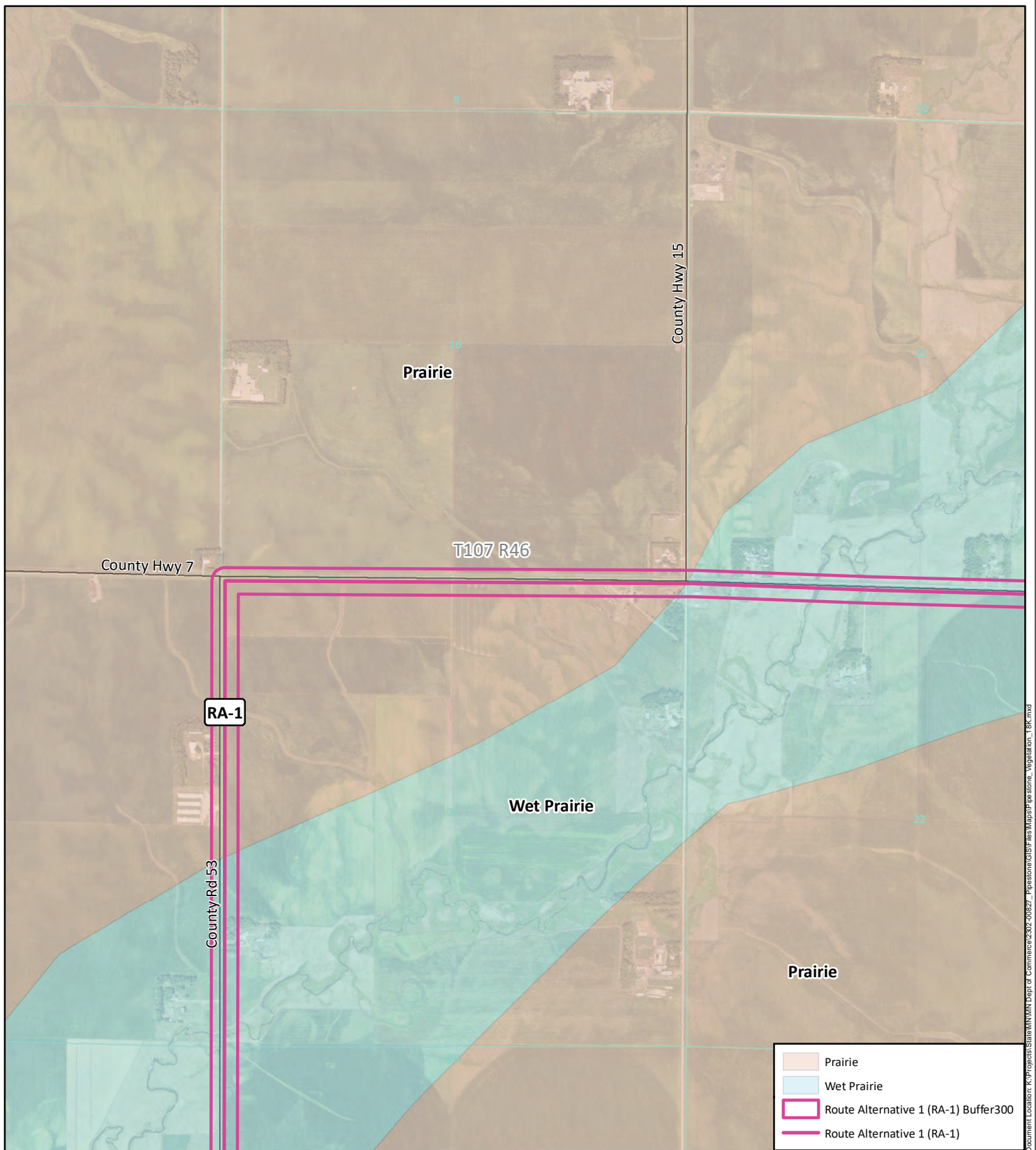


Data Source: US Fish and Wildlife,
 State of MN, NRCS, & KLJ

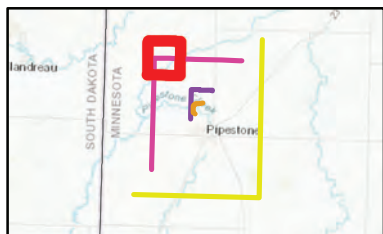


- Existing Magellan Pipeline
- Interstate
- US Highway
- State Highway
- Roads
- Township
- Sections

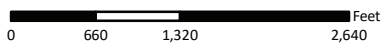
KLJ Project Number: 2302-00827
 Date Created: 12/6/2023
 Created By: duanekaul



Document Location: K:\Projects\State\MN\IN Dept of Commerce\2302-00827_Pipestone\GIS\Final\Map\RA-1_Vegetation_18K.mxd



Pre-Settlement Vegetation
 Pipestone Pipeline Reroute Project
 Docket Number: PPL-23-109
 Pipestone, MN

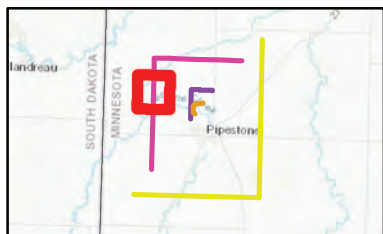
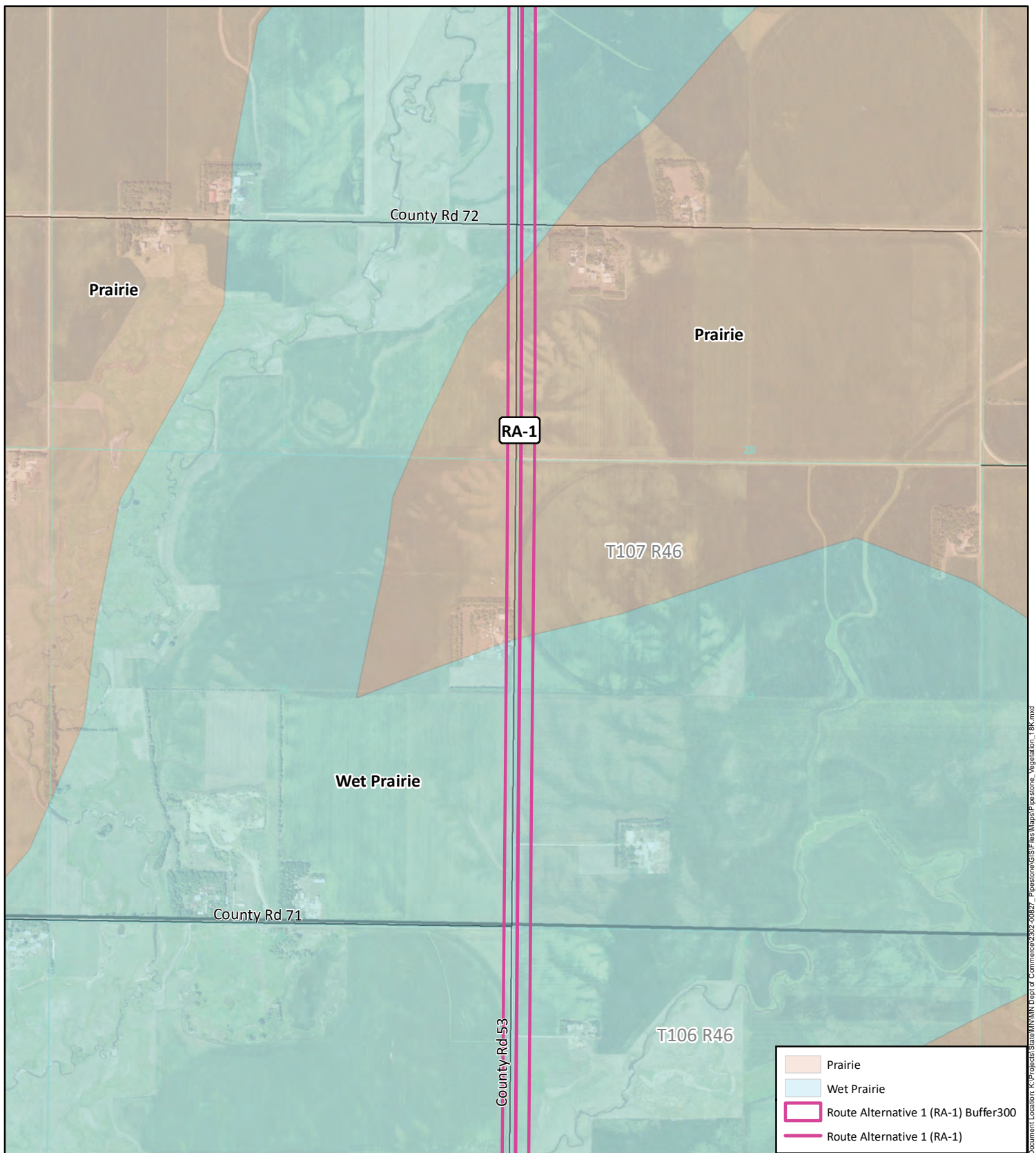


Data Source: US Fish and Wildlife,
 State of MN, NRCS, & KLJ

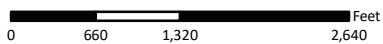


- Existing Magellan Pipeline
- Interstate
- US Highway
- State Highway
- Roads
- Township
- Sections

KLJ Project Number: 2302-00827
 Date Created: 12/6/2023
 Created By: duanekaul



Pre-Settlement Vegetation
 Pipestone Pipeline Reroute Project
 Docket Number: PPL-23-109
 Pipestone, MN



Data Source: US Fish and Wildlife,
 State of MN, NRCS, & KLJ

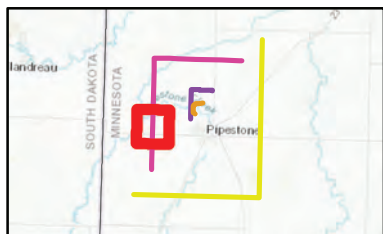
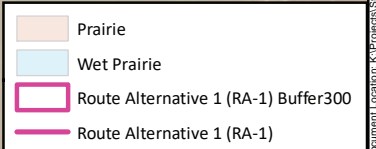
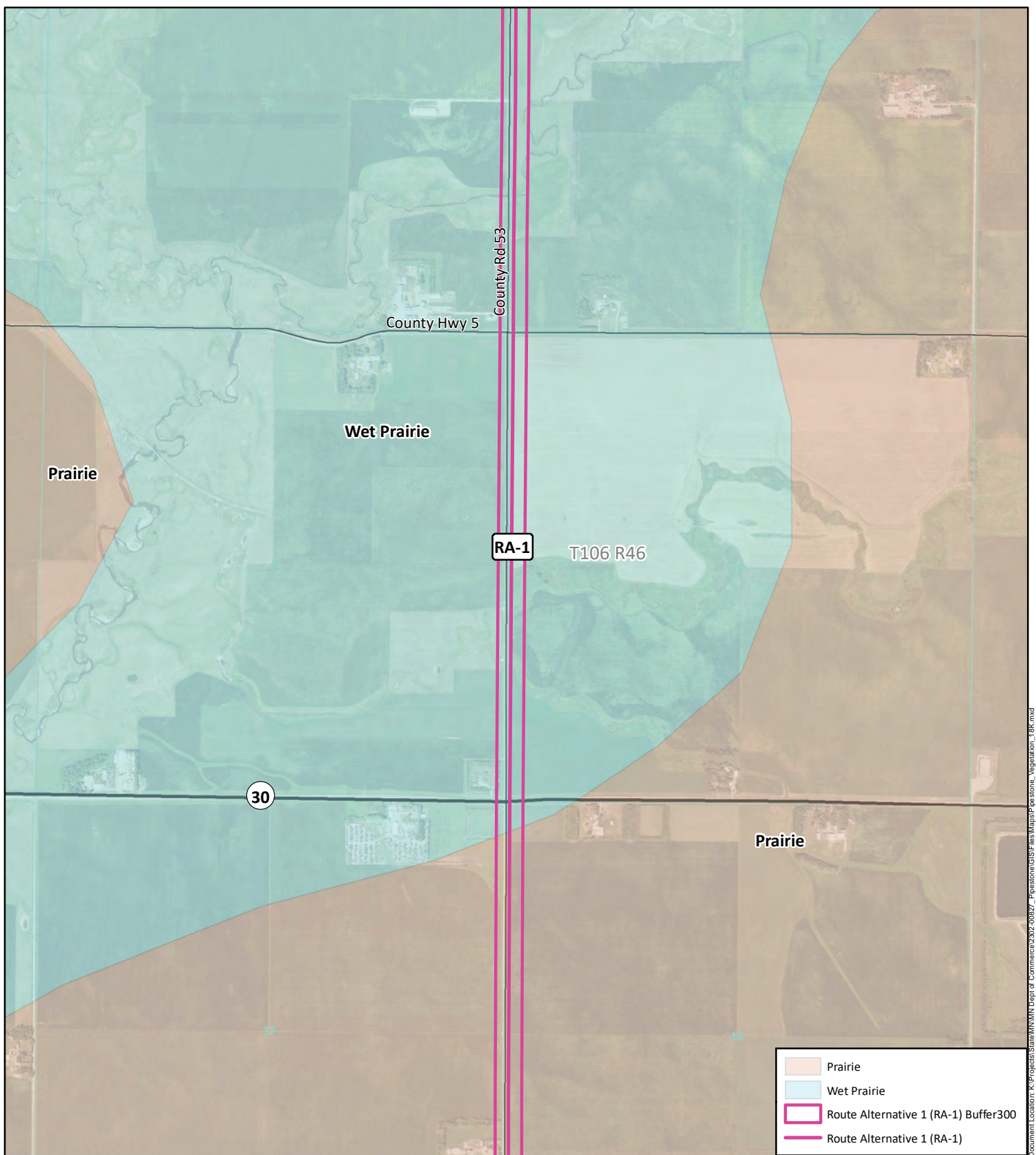


- Prairie
- Wet Prairie
- Route Alternative 1 (RA-1) Buffer300
- Route Alternative 1 (RA-1)

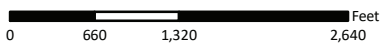
- Existing Magellan Pipeline
- Interstate
- US Highway
- State Highway
- Roads
- Township
- Sections

KLJ Project Number: 2302-00827
 Date Created: 12/6/2023
 Created By: duanekaul

Document Location: K:\Projects\State\MN\Dept of Commerce\2302-00827_Pipestone\GIS\Fish\Map\Pre-Settlement_Vegetation_18K.mxd



Pre-Settlement Vegetation
 Pipestone Pipeline Reroute Project
 Docket Number: PPL-23-109
 Pipestone, MN



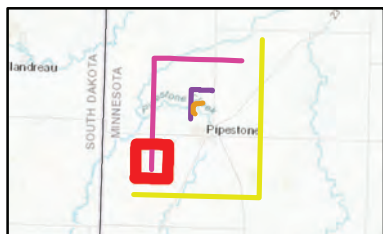
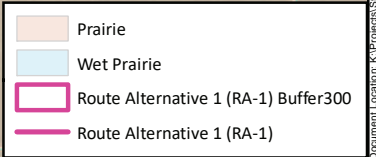
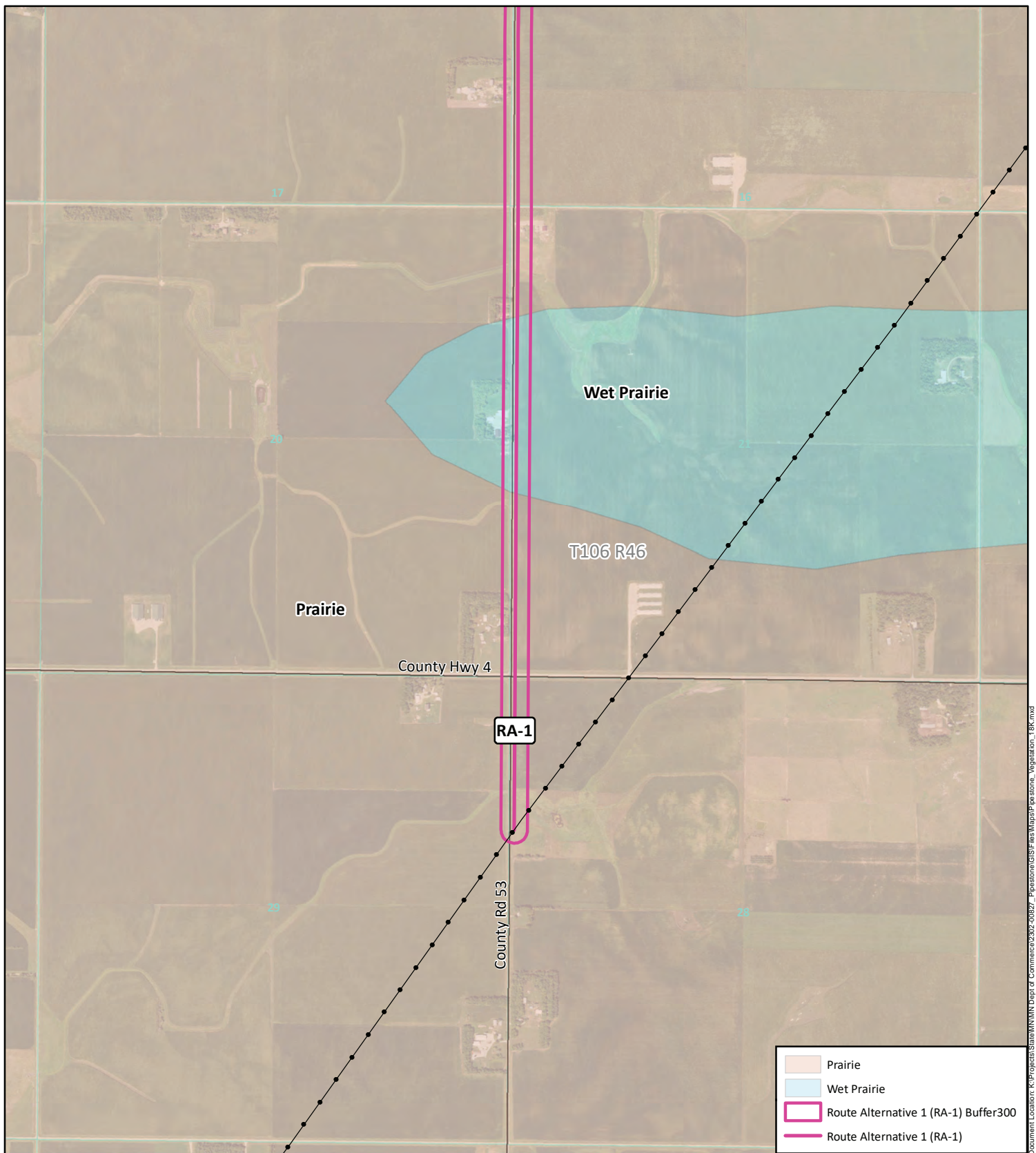
Data Source: US Fish and Wildlife,
 State of MN, NRCS, & KLJ



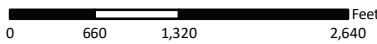
- Existing Magellan Pipeline
- Interstate
- US Highway
- State Highway
- Roads
- Township
- Sections

KLJ Project Number: 2302-00827
 Date Created: 12/6/2023
 Created By: duanekaul

Document Location: K:\Projects\State\Winn\Dept of Commerce\2302-00827_Pipestone\GIS\Fish\Map\Pre-Settlement_Vegetation_18k.mxd



Pre-Settlement Vegetation
 Pipestone Pipeline Reroute Project
 Docket Number: PPL-23-109
 Pipestone, MN



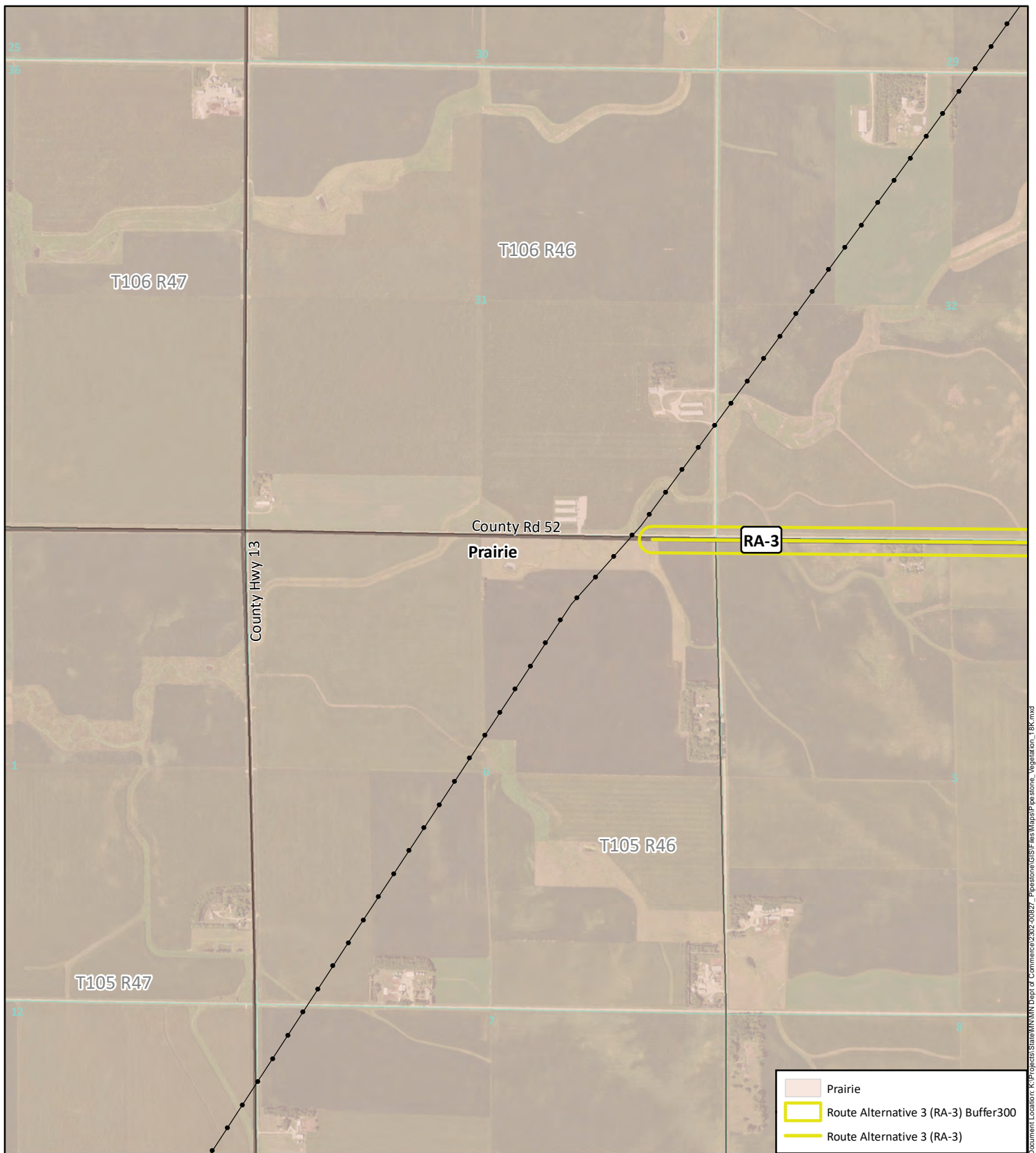
Data Source: US Fish and Wildlife,
 State of MN, NRCS, & KLJ



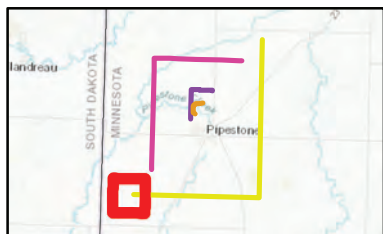
- Existing Magellan Pipeline
- Interstate
- US Highway
- State Highway
- Roads
- Township
- Sections

KLJ Project Number: 2302-00827
 Date Created: 12/6/2023
 Created By: duanekaul

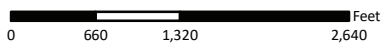
Document Location: K:\Projects\State\MN\Dept of Commerce\2302-00827_Pipestone\GIS\Final\Map\RA-1_Vegetation_18K.mxd



Document Location: K:\Projects\State\MN\Dept of Commerce\2302-00827 - Pipestone\GIS\Fish\Map\Pre-pipe stone_Vegetation_18k.mxd



Pre-Settlement Vegetation
 Pipestone Pipeline Reroute Project
 Docket Number: PPL-23-109
 Pipestone, MN

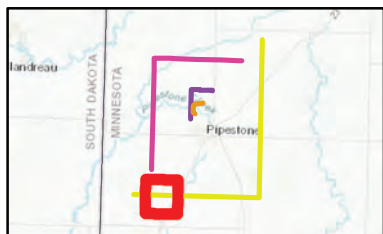
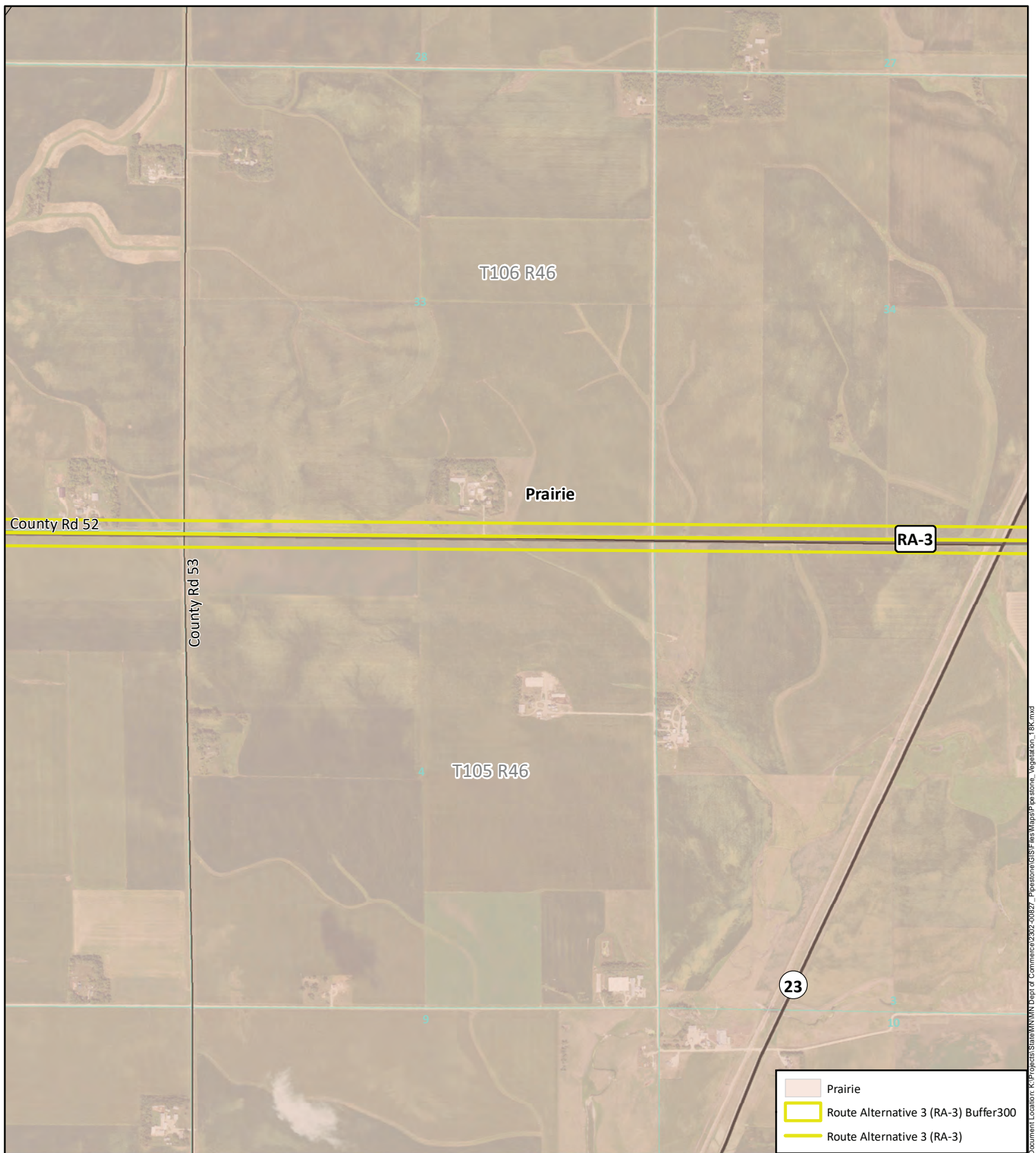


Data Source: US Fish and Wildlife,
 State of MN, NRCS, & KLJ

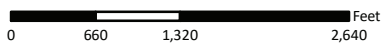


- Existing Magellan Pipeline
- Interstate
- US Highway
- State Highway
- Roads
- Township
- Sections

KLJ Project Number: 2302-00827
 Date Created: 12/6/2023
 Created By: duanekaul



Pre-Settlement Vegetation
 Pipestone Pipeline Reroute Project
 Docket Number: PPL-23-109
 Pipestone, MN



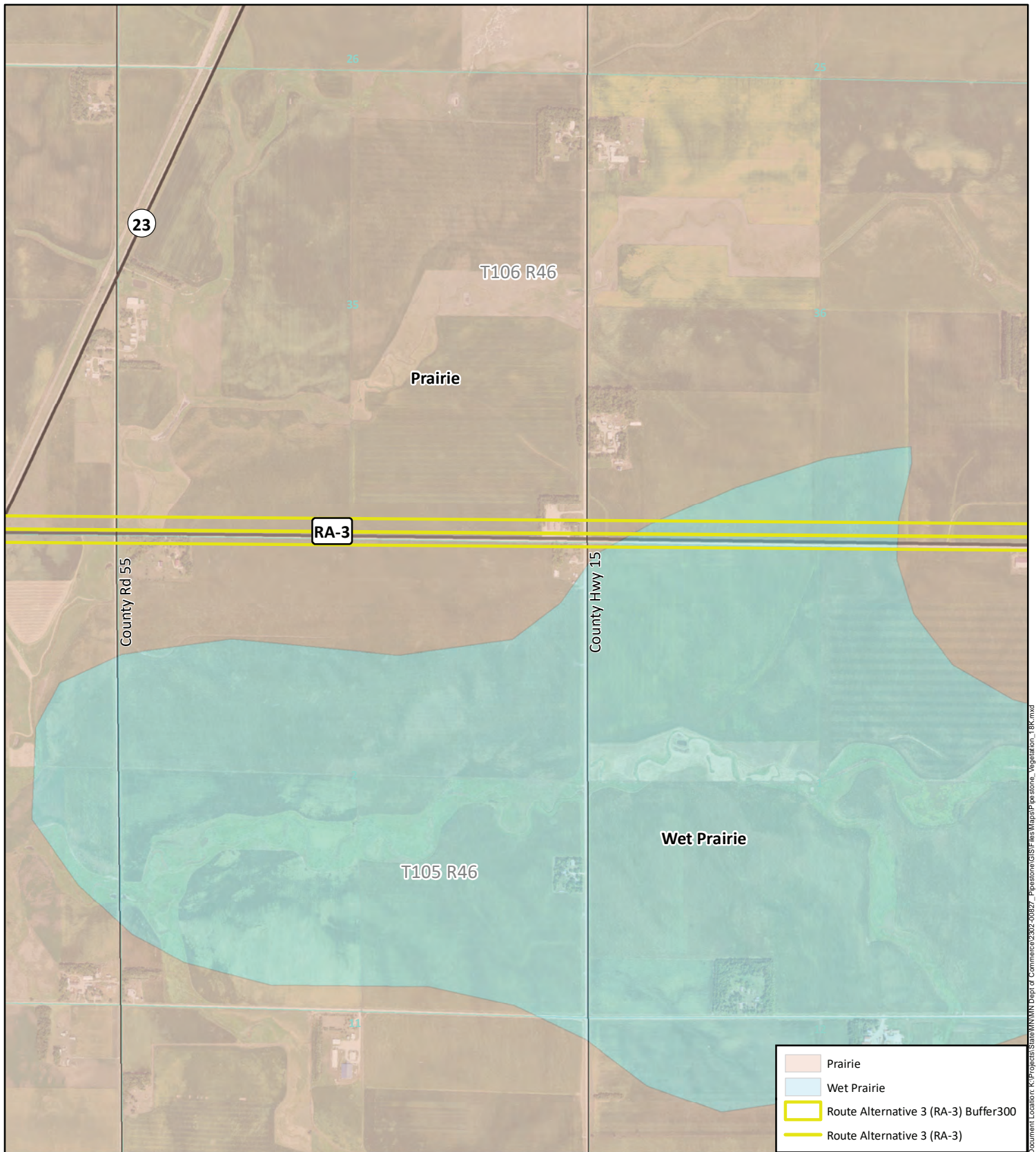
Data Source: US Fish and Wildlife,
 State of MN, NRCS, & KLJ



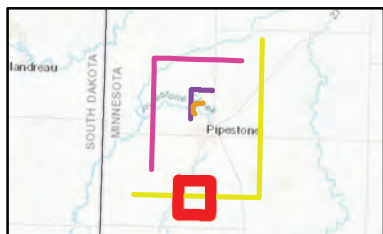
- Existing Magellan Pipeline
- Interstate
- US Highway
- State Highway
- Roads
- Township
- Sections

KLJ Project Number: 2302-00827
 Date Created: 12/6/2023
 Created By: duanekaul

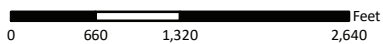
Document Location: K:\Projects\State\MN\Dept of Commerce\2302-00827_Pipestone\GIS\Final\Map\Pre-Settlement_Vegetation_18k.mxd



Document Location: K:\Projects\State\MN\Dept of Commerce\2302-00827_Pipestone\GIS\Final\Map\Pre-pipe_stone_Vegetation_18k.mxd



Pre-Settlement Vegetation
 Pipestone Pipeline Reroute Project
 Docket Number: PPL-23-109
 Pipestone, MN



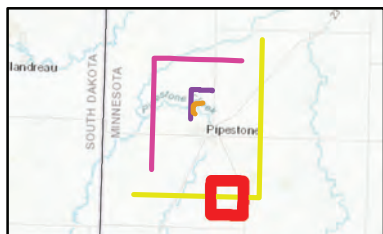
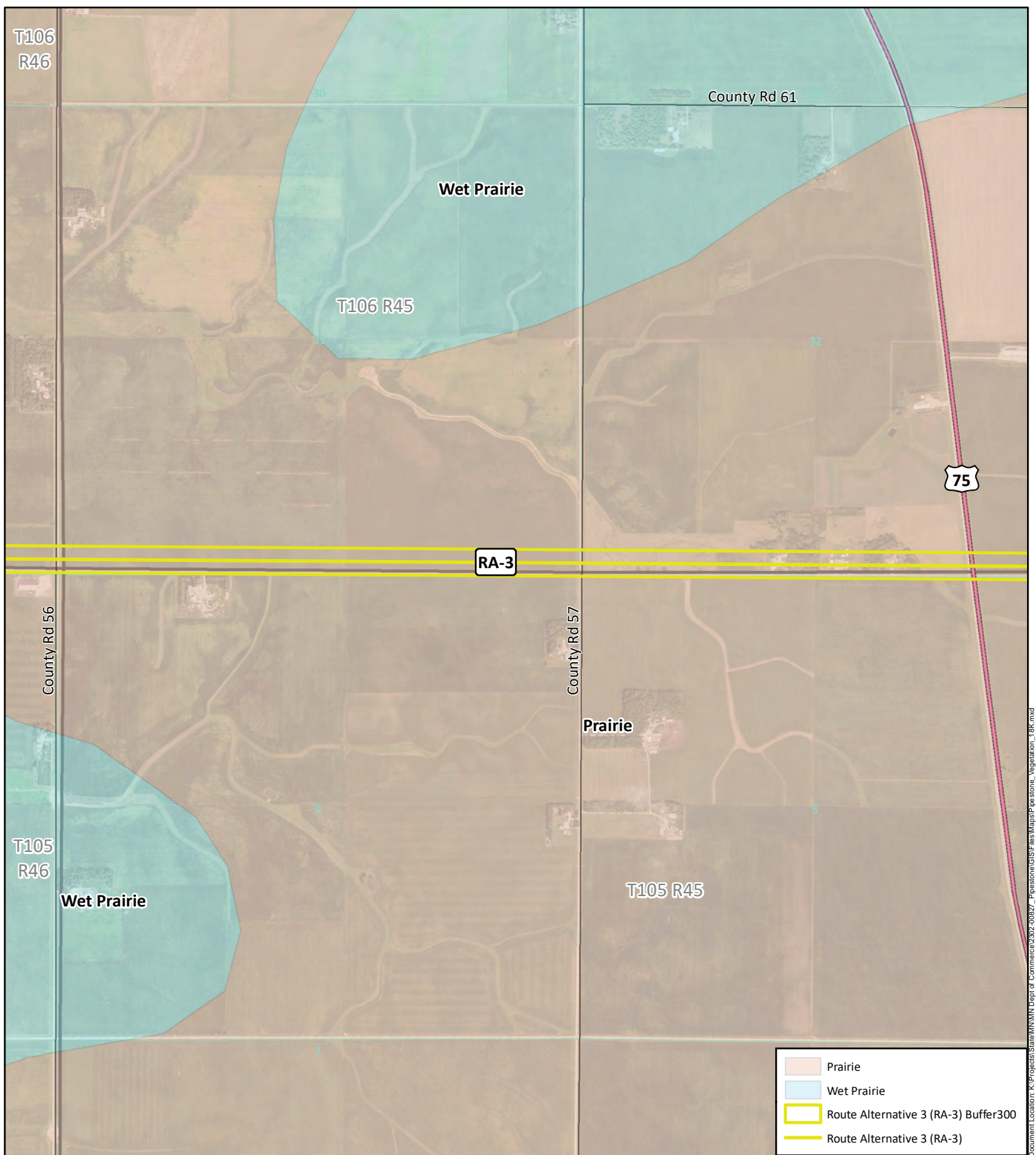
Data Source: US Fish and Wildlife,
 State of MN, NRCS, & KLJ



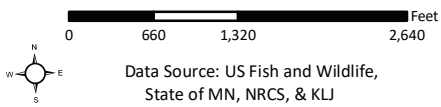
- Prairie
- Wet Prairie
- Route Alternative 3 (RA-3) Buffer300
- Route Alternative 3 (RA-3)

- Existing Magellan Pipeline
- Interstate
- US Highway
- State Highway
- Roads
- Township
- Sections

KLJ Project Number: 2302-00827
 Date Created: 12/6/2023
 Created By: duanekaul

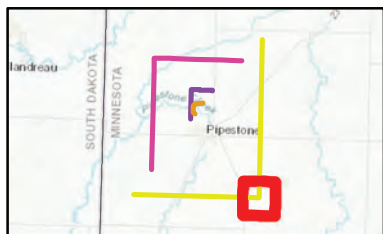
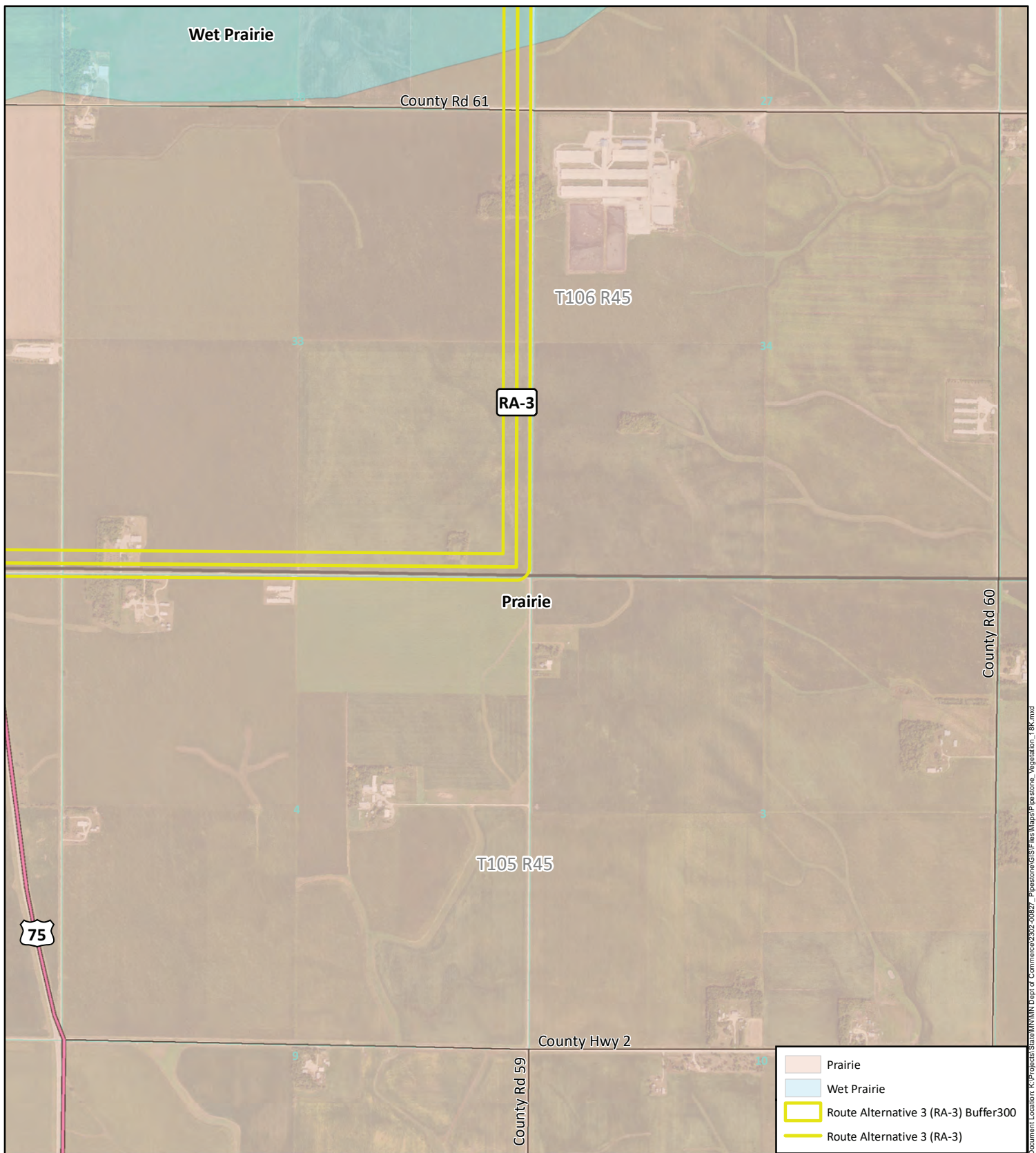


Pre-Settlement Vegetation
 Pipestone Pipeline Reroute Project
 Docket Number: PPL-23-109
 Pipestone, MN

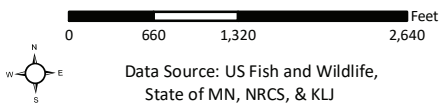


- Existing Magellan Pipeline
- Interstate
- US Highway
- State Highway
- Roads
- Township
- Sections

KLJ Project Number: 2302-00827
 Date Created: 12/6/2023
 Created By: duanekaul



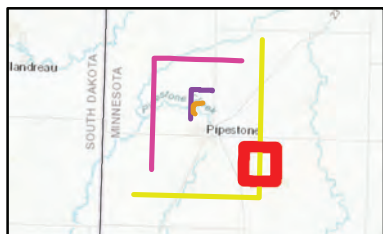
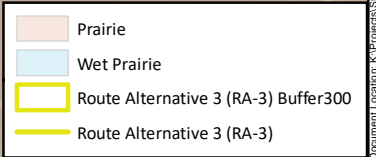
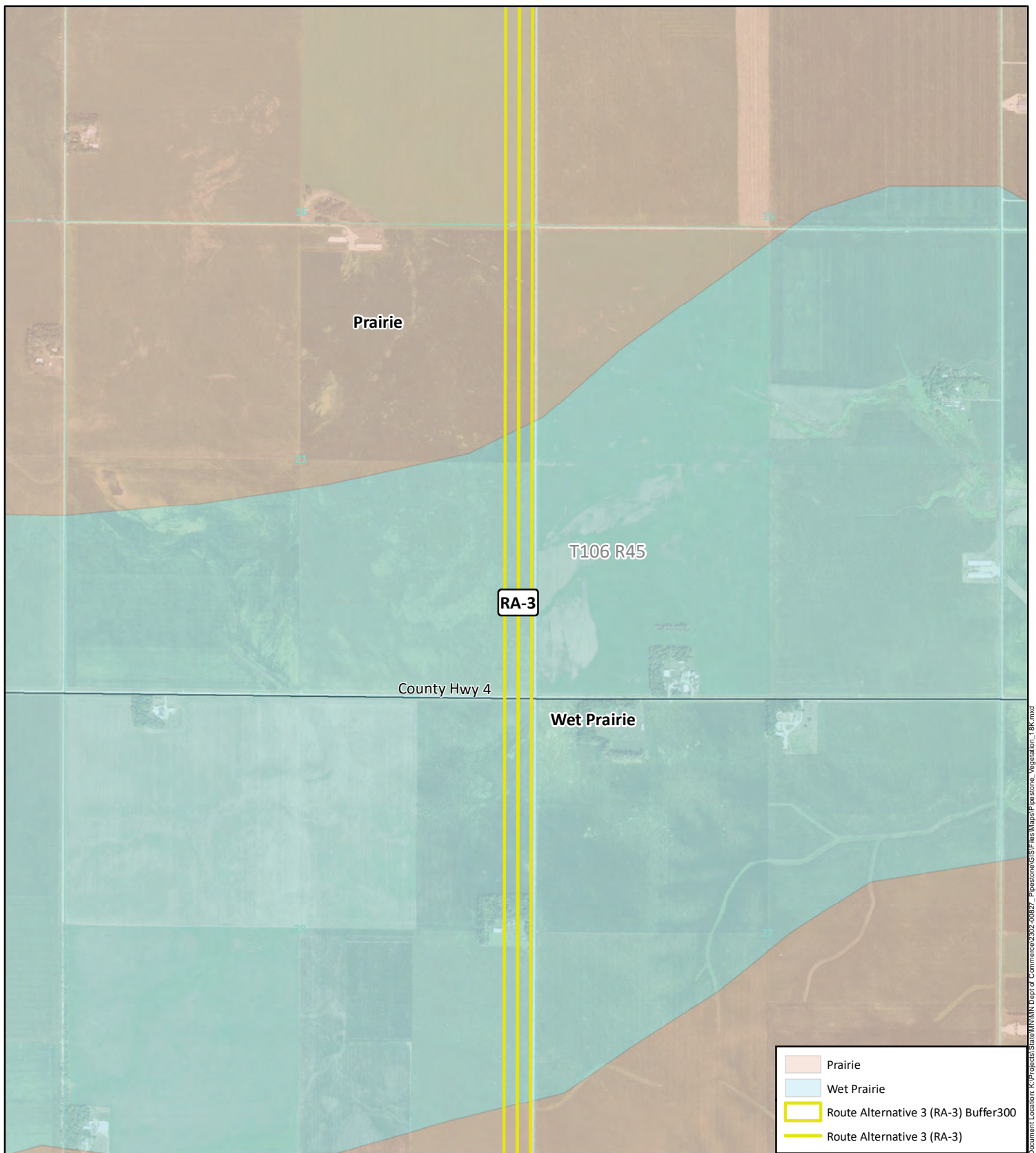
Pre-Settlement Vegetation
 Pipestone Pipeline Reroute Project
 Docket Number: PPL-23-109
 Pipestone, MN



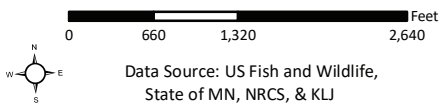
- Prairie
- Wet Prairie
- Route Alternative 3 (RA-3) Buffer300
- Route Alternative 3 (RA-3)

- Existing Magellan Pipeline
- Interstate
- US Highway
- State Highway
- Roads
- Township
- Sections

KLJ Project Number: 2302-00827
 Date Created: 12/6/2023
 Created By: duanekaul

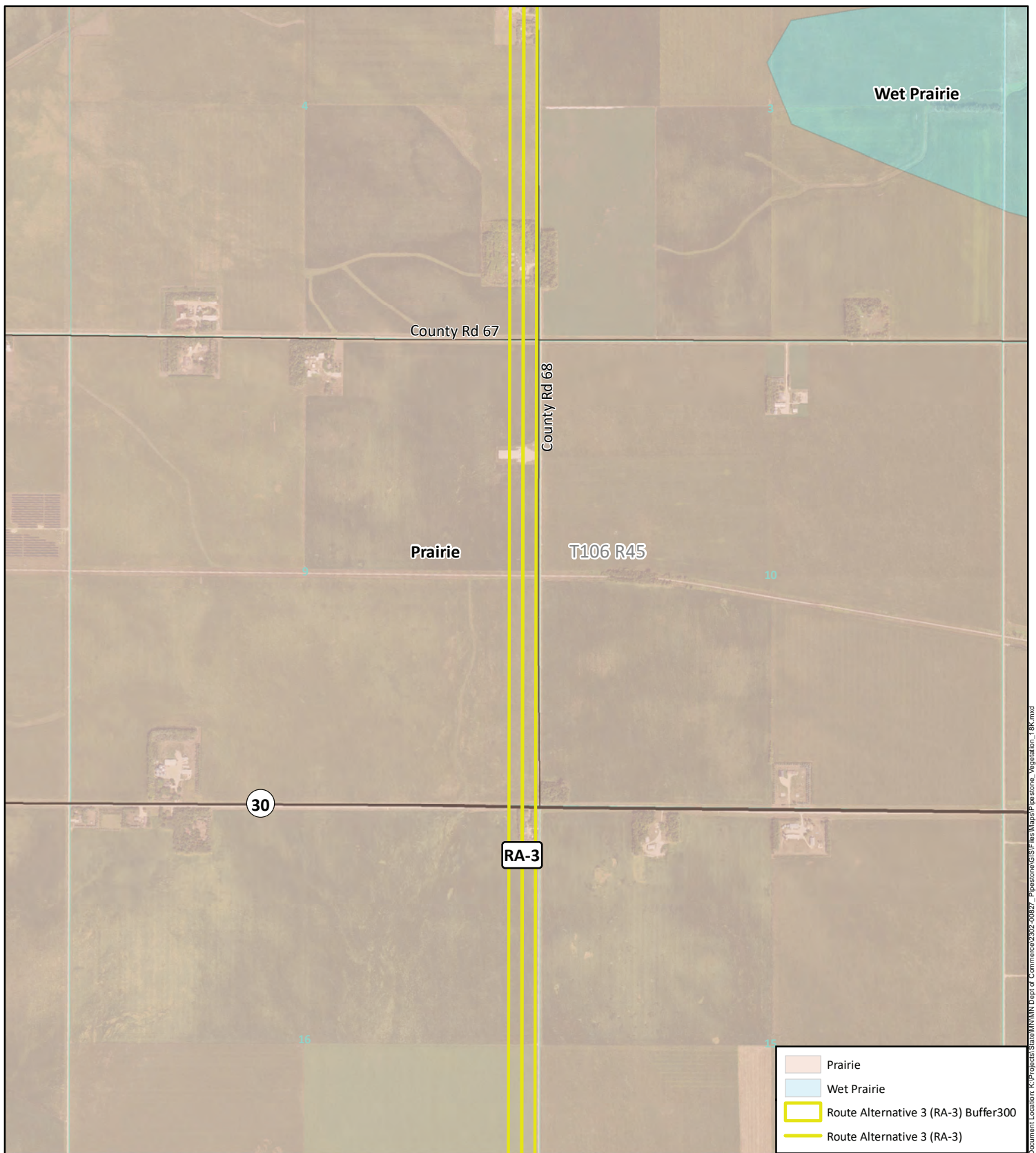


Pre-Settlement Vegetation
 Pipestone Pipeline Reroute Project
 Docket Number: PPL-23-109
 Pipestone, MN

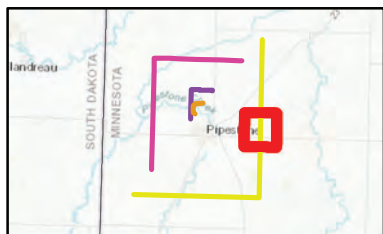


- Existing Magellan Pipeline
- Interstate
- US Highway
- State Highway
- Roads
- Township
- Sections

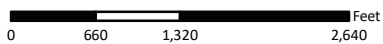
KLJ Project Number: 2302-00827
 Date Created: 12/6/2023
 Created By: duanekaul



Document Location: K:\Projects\State\Winn\Dept of Commerce\2302-00827 - Pipestone\GIS\Final\Map\RA-3\RA-3_Vegetation_18k.mxd



Pre-Settlement Vegetation
 Pipestone Pipeline Reroute Project
 Docket Number: PPL-23-109
 Pipestone, MN

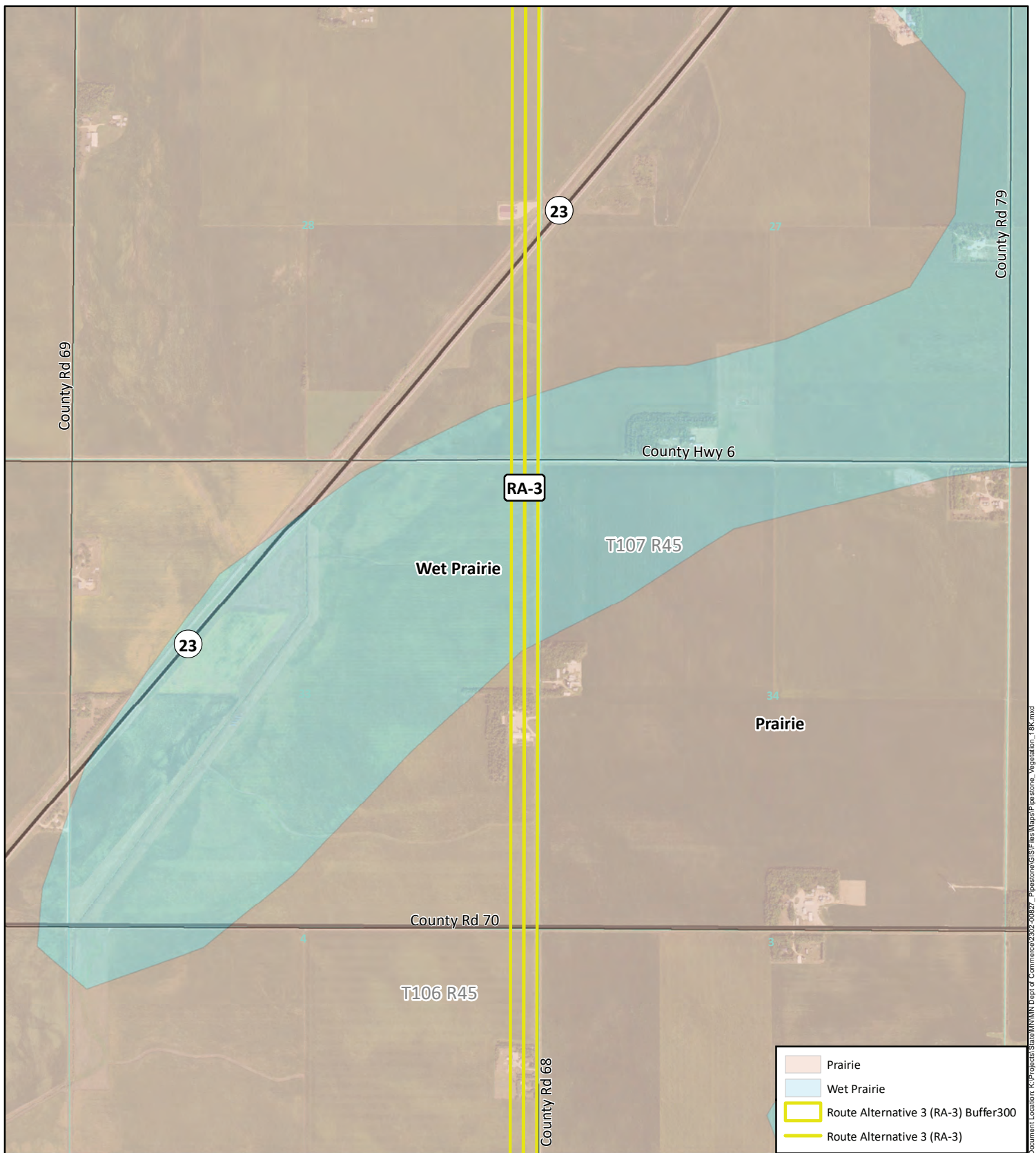


Data Source: US Fish and Wildlife,
 State of MN, NRCS, & KLJ

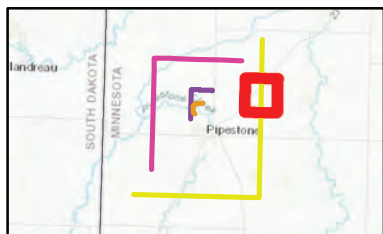


- Existing Magellan Pipeline
- Interstate
- US Highway
- State Highway
- Roads
- Township
- Sections

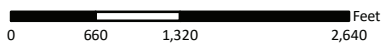
KLJ Project Number: 2302-00827
 Date Created: 12/6/2023
 Created By: duanekaul



Document Location: K:\Projects\State\MN\Dept of Commerce\2302-00827_Pipestone\GIS\Fish\Map\Pre-settlement_Vegetation_18k.mxd



Pre-Settlement Vegetation
 Pipestone Pipeline Reroute Project
 Docket Number: PPL-23-109
 Pipestone, MN

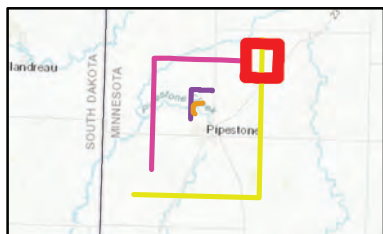
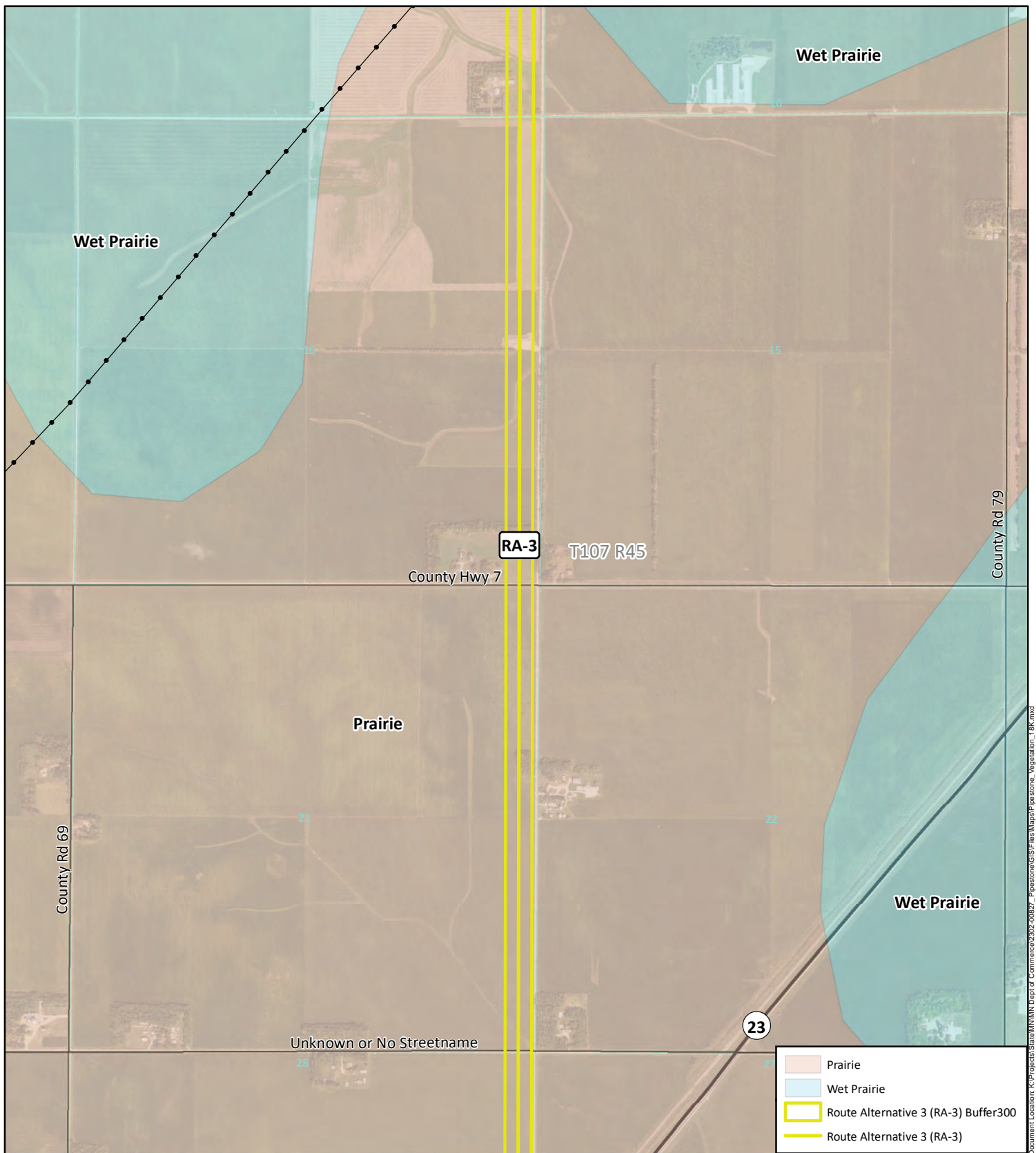


Data Source: US Fish and Wildlife,
 State of MN, NRCS, & KLJ

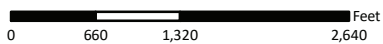


- Existing Magellan Pipeline
- Interstate
- US Highway
- State Highway
- Roads
- Township
- Sections

KLJ Project Number: 2302-00827
 Date Created: 12/6/2023
 Created By: duanekaul



Pre-Settlement Vegetation
 Pipestone Pipeline Reroute Project
 Docket Number: PPL-23-109
 Pipestone, MN

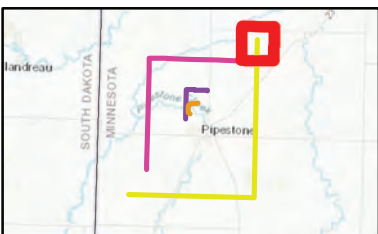
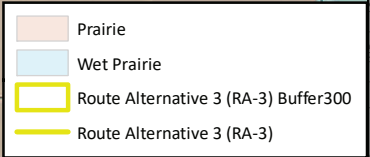
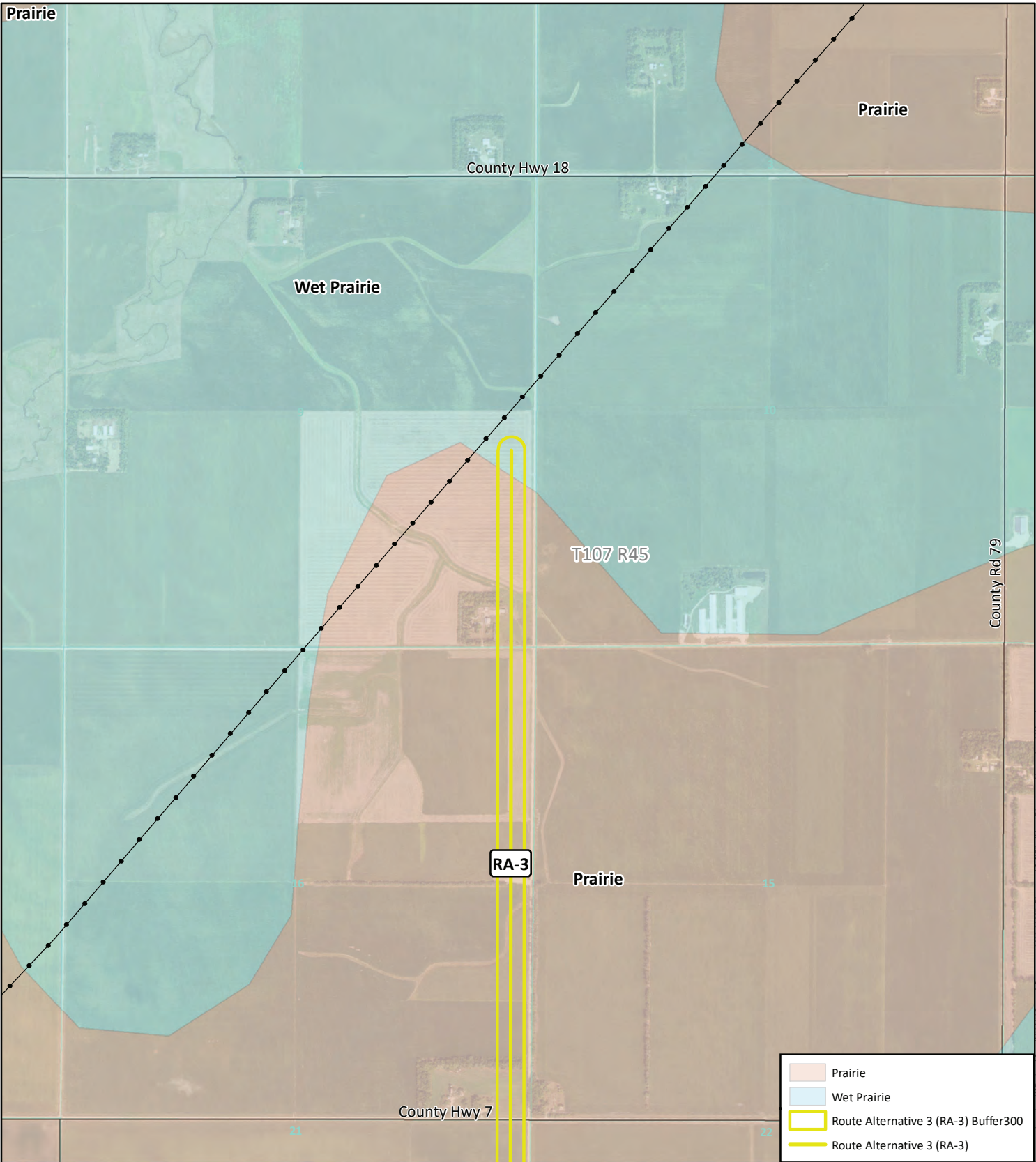


Data Source: US Fish and Wildlife,
 State of MN, NRCS, & KLJ

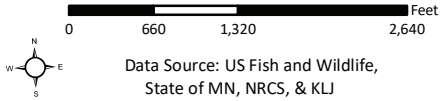


- Existing Magellan Pipeline
- Interstate
- US Highway
- State Highway
- Roads
- Township
- Sections

KLJ Project Number: 2302-00827
 Date Created: 12/6/2023
 Created By: duanekaul



Pre-Settlement Vegetation
 Pipestone Pipeline Reroute Project
 Docket Number: PPL-23-109
 Pipestone, MN



Data Source: US Fish and Wildlife,
 State of MN, NRCS, & KLJ



- Existing Magellan Pipeline
- Interstate
- US Highway
- State Highway
- Roads
- Township
- Sections

KLJ Project Number: 2302-00827
 Date Created: 12/6/2023
 Created By: duanekaul

Document Location: K:\Projects\State\Winn\Dept of Commerce\2302-00827_Pipestone\GIS\Fish\Map\Pre-pipe_stone_Vegetation_18k.mxd