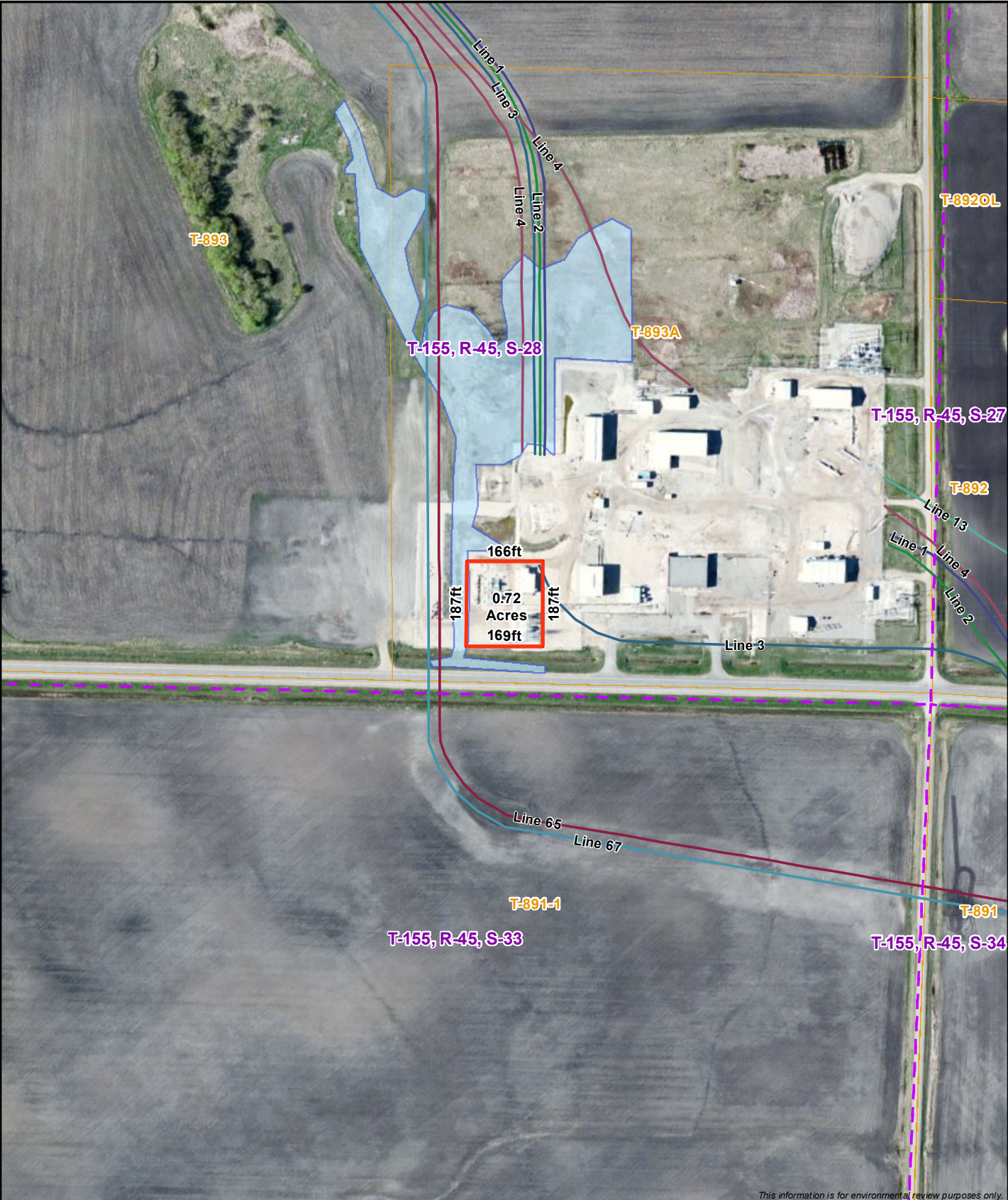


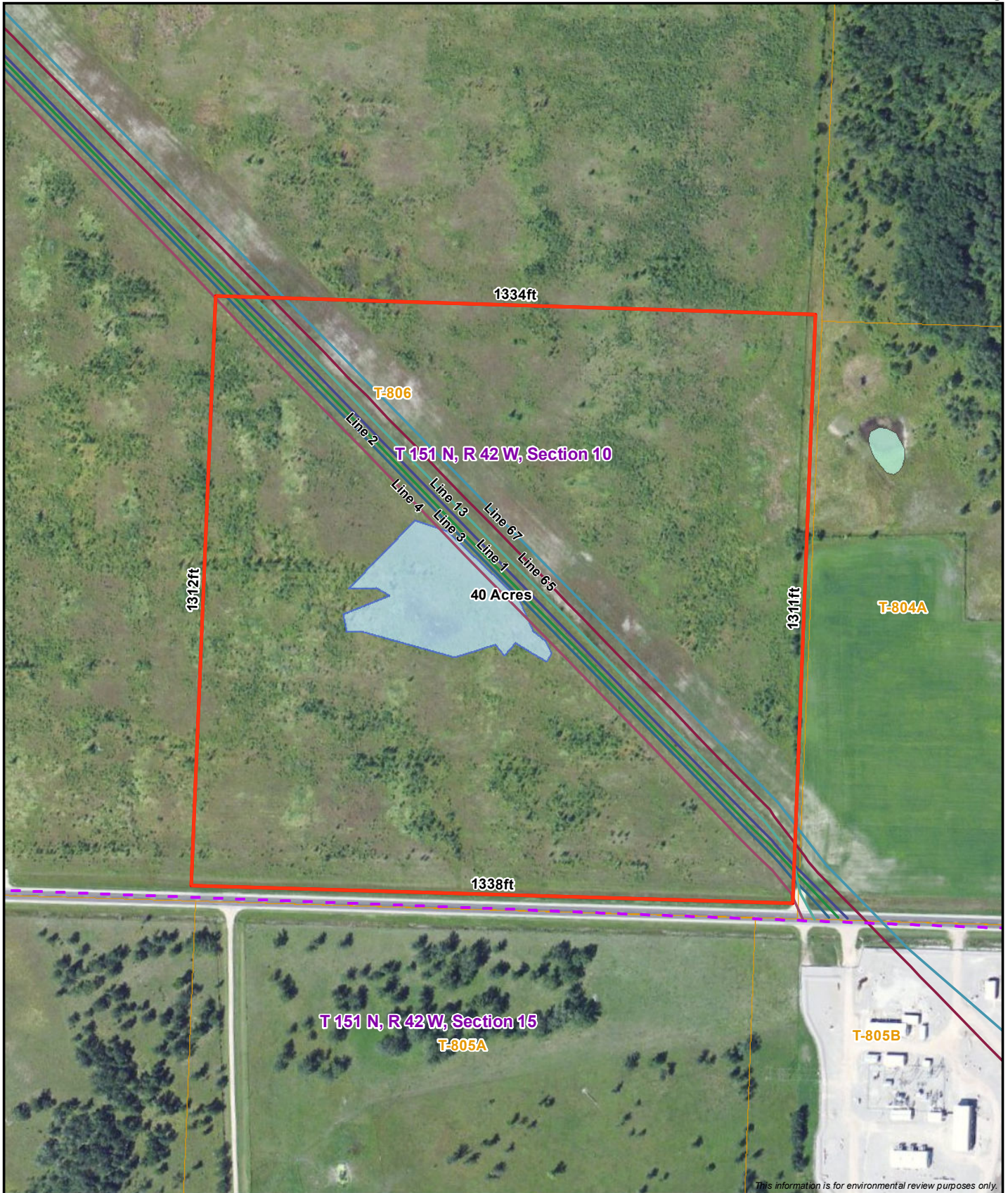
This information is for environmental review purposes only.

<ul style="list-style-type: none"> — Proposed Expansion — Delineated Wetlands - 2012 — Delineated Wetlands - 2008-9 — NWI Wetlands — Parcel Boundary 	<ul style="list-style-type: none"> — Section Boundary 	<p>1:3,600</p> <p>0 100 200 Feet</p>	<p>Donaldson Kittson County, MN Line 67 Enhancement Project Enbridge Energy, LP</p>
---	--	--------------------------------------	--



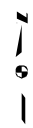
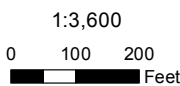
This information is for environmental review purposes only.

<ul style="list-style-type: none"> — Proposed Expansion ■ Delineated Wetlands - 2012 ■ Delineated Wetlands - 2008-9 ■ NWI Wetlands ■ Parcel Boundary 	<ul style="list-style-type: none"> - - - Section Boundary 	<p>1:3,600</p> <p>0 100 200 Feet</p>			<p>Viking Station Marshall County, MN Line 67 Expansion Project Enbridge Energy, LP</p>	
---	--	--------------------------------------	--	--	---	--



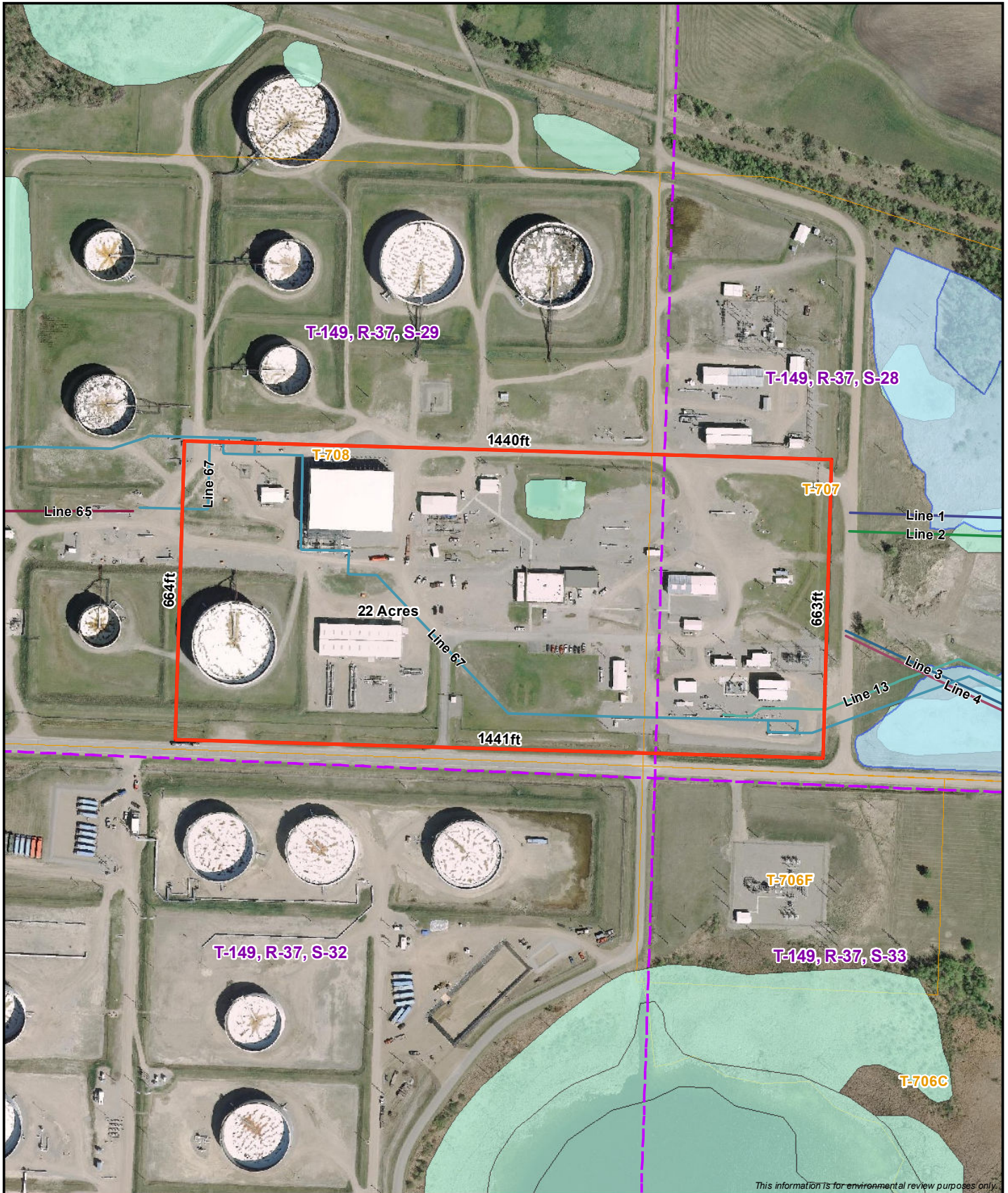
This information is for environmental review purposes only.

- Proposed Expansion
- - - Section Boundary
- Delineated Wetlands - 2012
- Delineated Wetlands - 2008-9
- NWI Wetlands
- Parcel Boundary




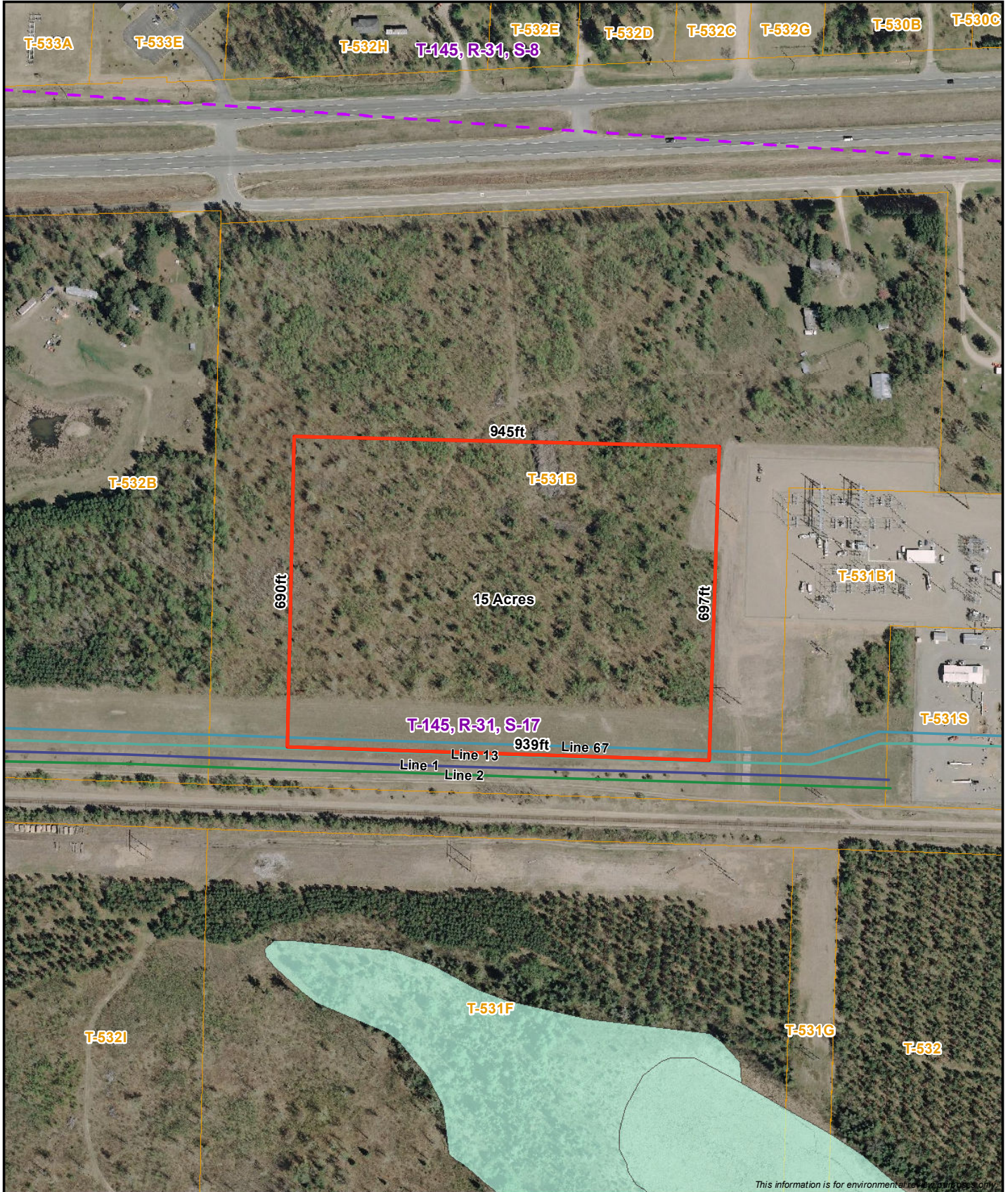
Plummer
 Red Lake County, MN
 Line 67 Enhancement Project
 Enbridge Energy, LP





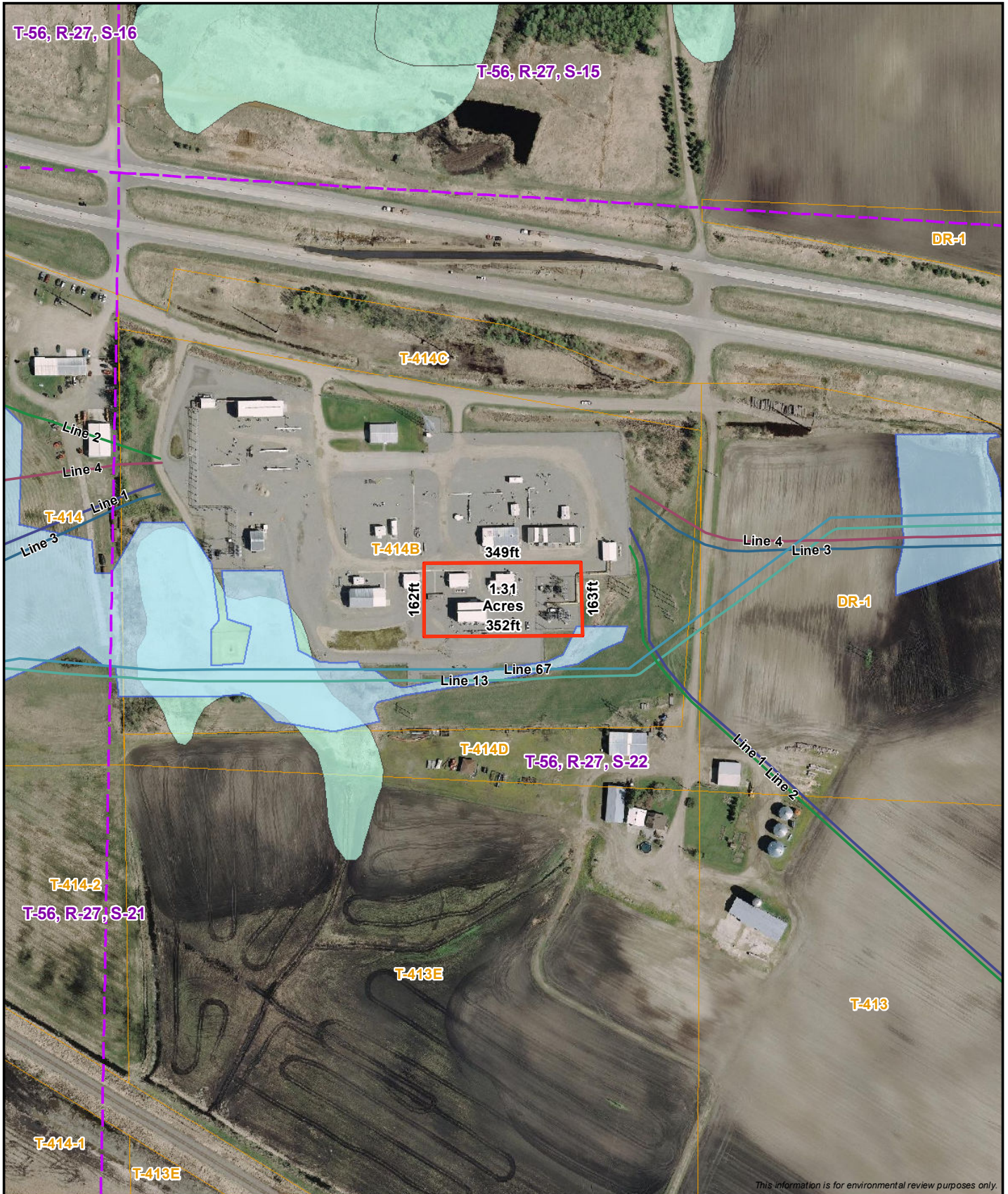
This information is for environmental review purposes only.

<ul style="list-style-type: none"> — Proposed Expansion Delineated Wetlands - 2012 Delineated Wetlands - 2008-9 NWI Wetlands Parcel Boundary 	<ul style="list-style-type: none"> Section Boundary 	<p style="text-align: center;">1:3,600</p> <p style="text-align: center;">0 100 200 Feet</p>			<p>Clearbrook Terminal Clearwater County, MN Line 67 Expansion Project Enbridge Energy, LP</p>	
---	---	--	---	---	--	---



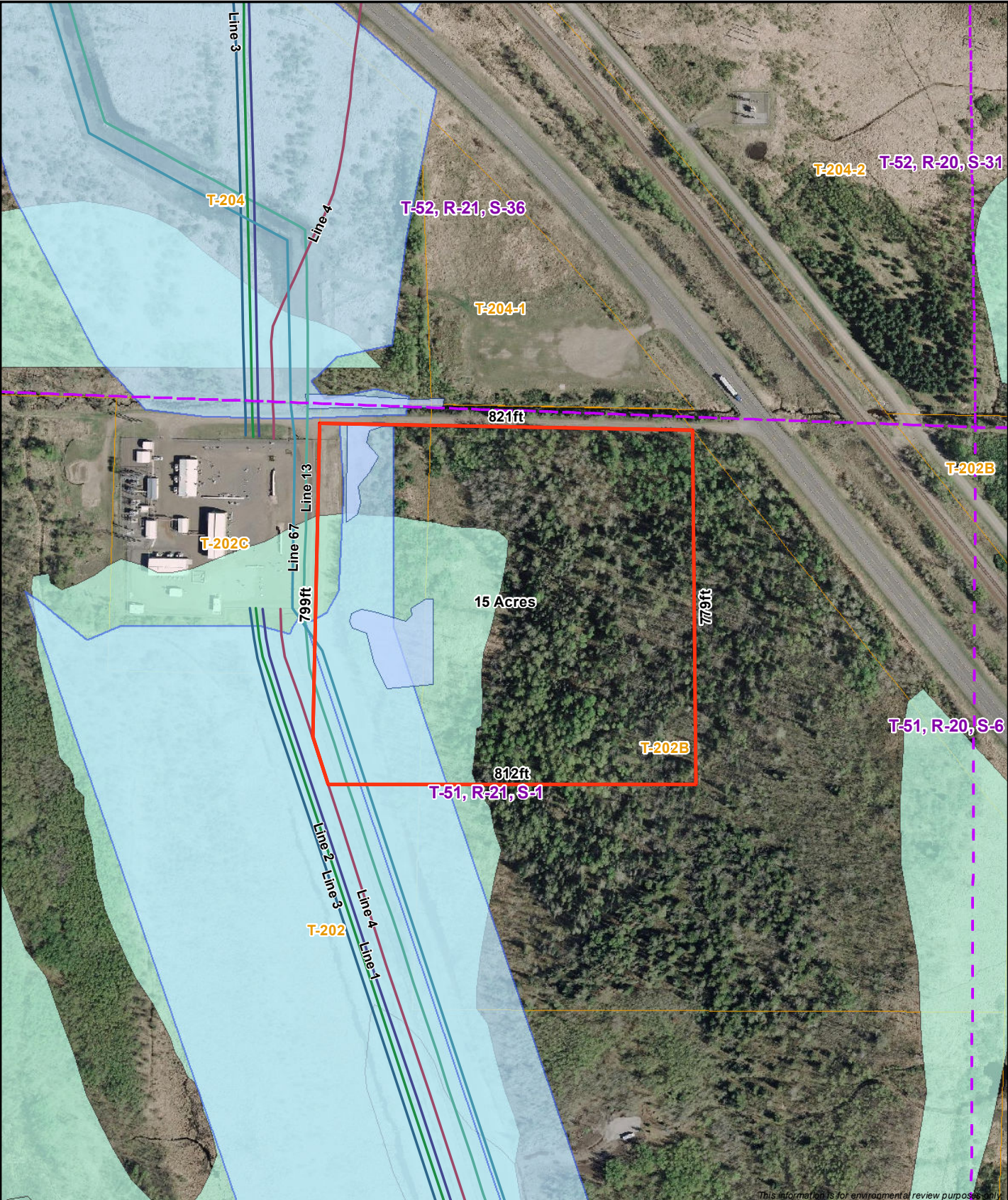
This information is for environmental review purposes only.

<ul style="list-style-type: none"> — Proposed Expansion — Delineated Wetlands - 2012 — Delineated Wetlands - 2008-9 — NWI Wetlands Parcel Boundary 	<ul style="list-style-type: none"> Section Boundary 	<p>1:3,600</p> <p>0 100 200 Feet</p>			<p>Cass Lake South Cass County, MN Line 67 Expansion Project Enbridge Energy, LP</p>	
---	--	--	--	--	--	--



This information is for environmental review purposes only.

<ul style="list-style-type: none"> — Proposed Expansion Delineated Wetlands - 2012 Delineated Wetlands - 2008-9 NWI Wetlands Parcel Boundary 	<ul style="list-style-type: none"> Section Boundary 	<p>1:3,600</p> <p>0 100 200</p> <p>Feet</p>			<p>Deer River Station Itasca County, MN Line 67 Expansion Project Enbridge Energy, LP</p>	
---	--	---	--	--	---	--



This information is for environmental review purposes only.

- Proposed Expansion
- Delineated Wetlands - 2012
- Delineated Wetlands - 2008-9
- NWI Wetlands
- Parcel Boundary
- Section Boundary

1:3,600

0 100 200
Feet

Floodwood
 St. Louis County, MN
 Line 67 Expansion Project
 Enbridge Energy, LP