

Figure 4-2
Laketown 115-kV Transmission Line Project
Route Alternatives Human and Environmental Features
 Carver County, Minnesota
 Page 3 of 4

0 450 900 Feet

1 inch = 900 feet

GREAT RIVER ENERGY

MVEC

For Environmental Review Purposes Only

Source: Z:\Client\115kV\Laketown\GIS\Permitting\State\UC-2024-04-29\Laketown_Route_Permitt_Figures.aprx Date: 7/8/2024

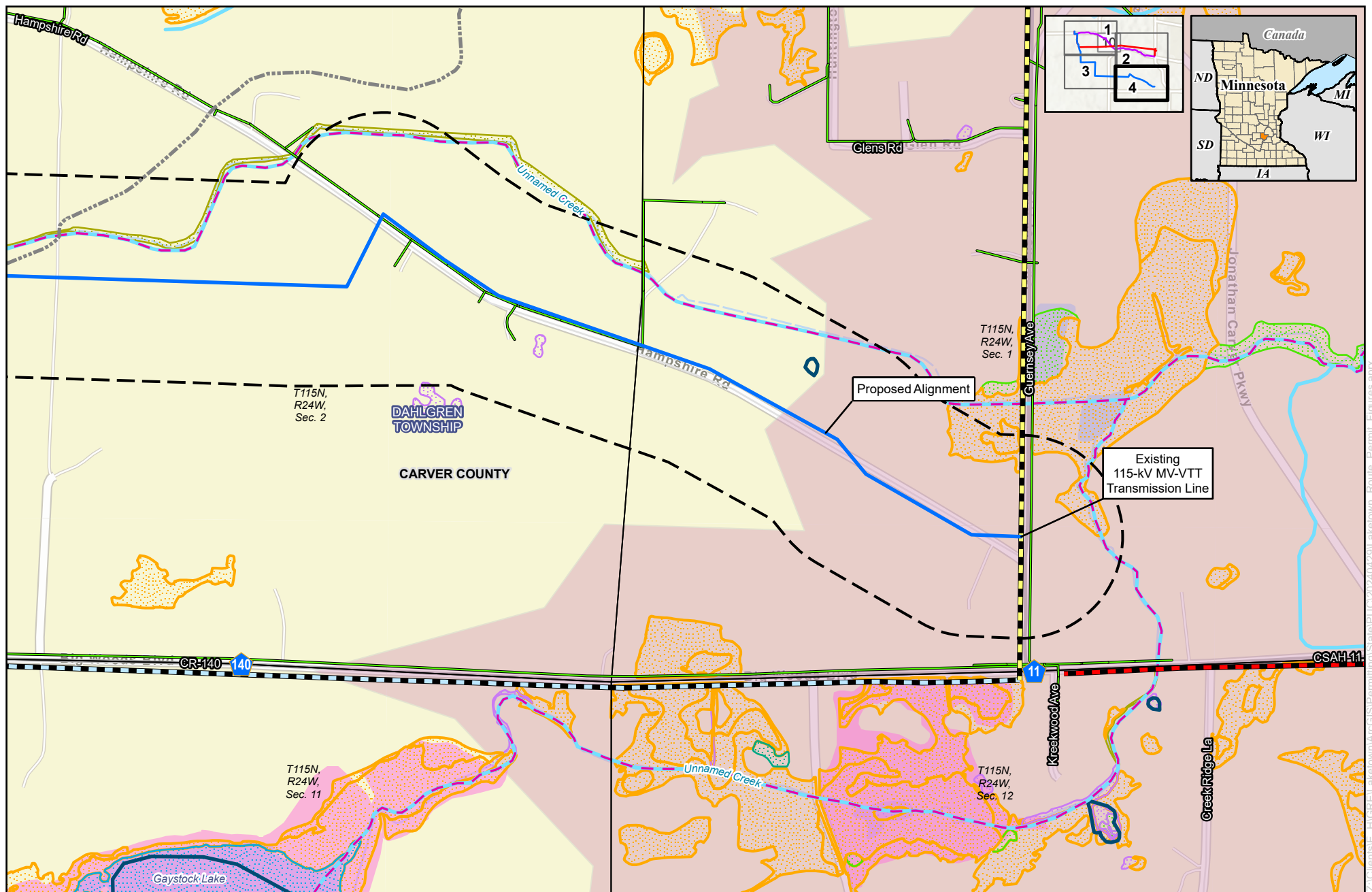


Figure 4-2
Laketown 115-kV Transmission Line Project
Route Alternatives Human and Environmental Features
Carver County, Minnesota
Page 4 of 4

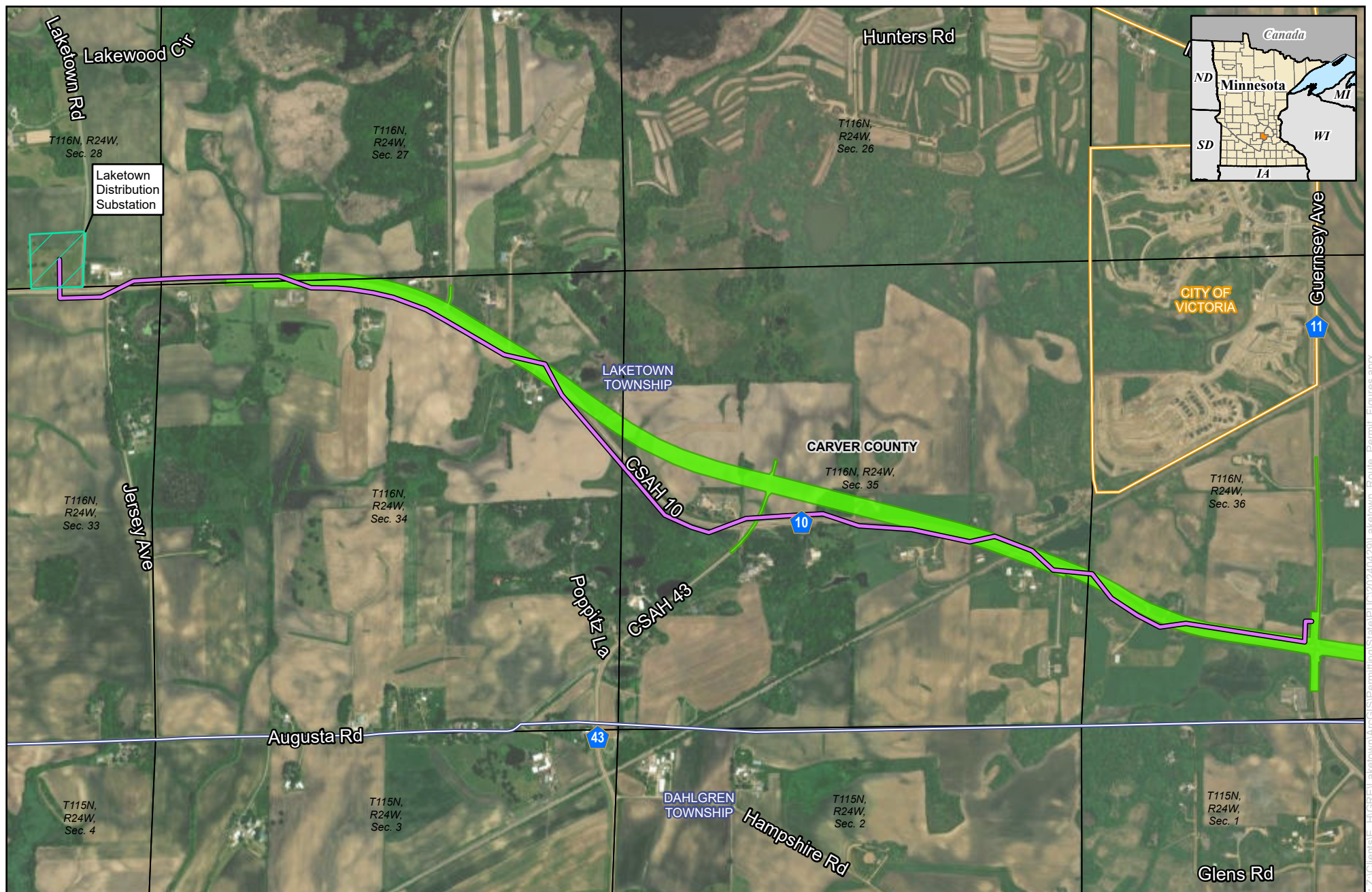
0 450 900
 Feet

1 inch = 900 feet



For Environmental Review Purposes Only

- | | | | |
|---------------------------------|--------------------------------------|--|-------------------|
| Great River Energy | Non-GRE Transmission | NWI Wetland | Section Boundary |
| Proposed Alignment | 69-kV Transmission Line | Freshwater Emergent Wetland | Township Boundary |
| Proposed Route Width | 115-kV Transmission Line | Freshwater Forested Wetland | County Boundary |
| MV-VTT 115-kV Transmission Line | Minnesota Valley Distribution Line | Freshwater Pond | County Highway |
| | Snowmobile Trail | Freshwater Shrub Wetland | |
| | MDNR Hydrography Dataset Watercourse | Lake | |
| | MDNR Hydrography Dataset Lake/Pond | Riverine | |
| | PWI Watercourse | Rusty Patched Bumble Bee High Potential Zone | |
| | PWI Basin | | |



0 750 1,500
Feet

1 inch = 1,500 feet

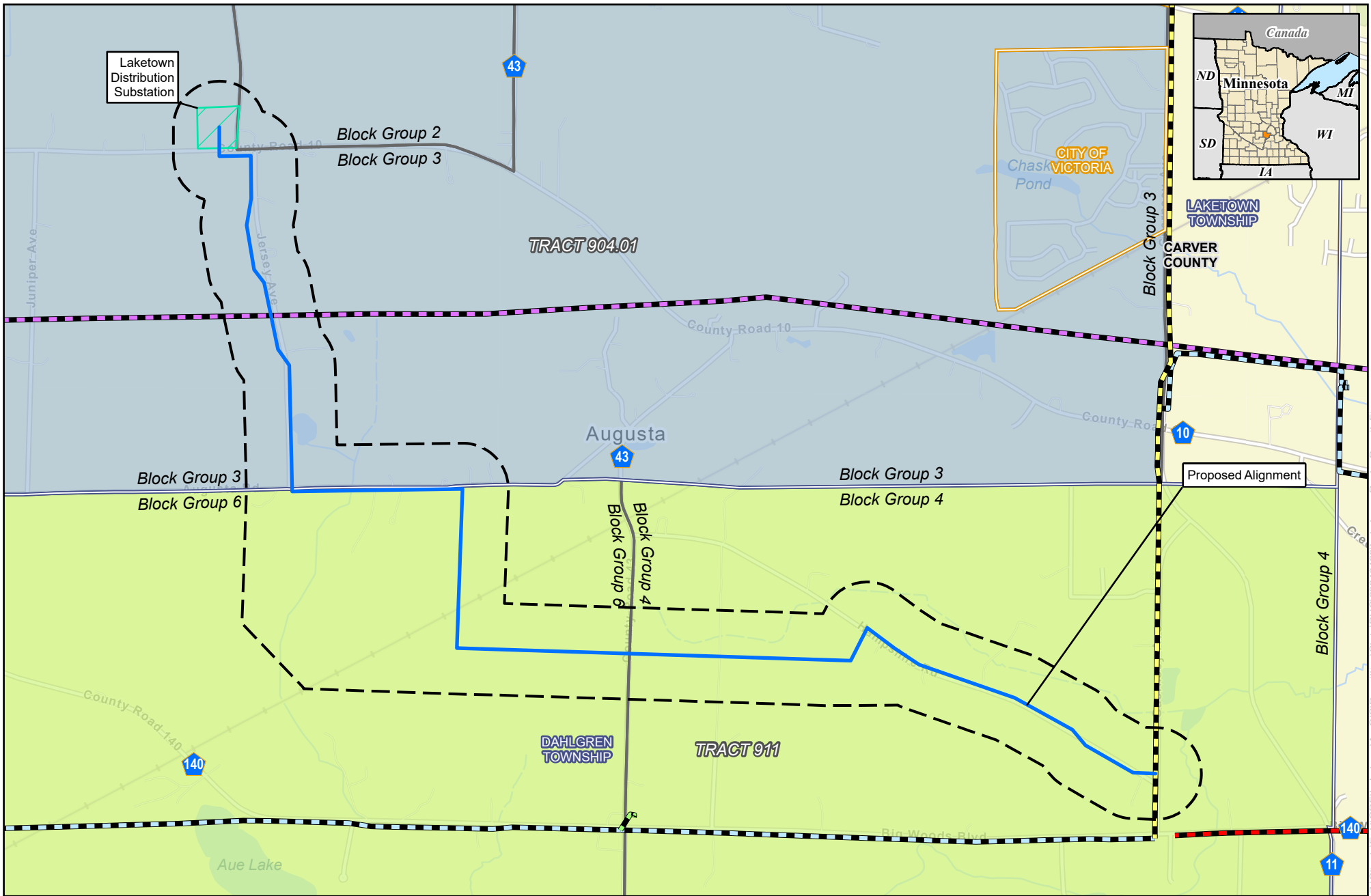


For Environmental Review Purposes Only



Figure 4-3
Laketown 115-kV Transmission Line Project
Highway 10 Corridor Study Improvements
Carver County, Minnesota

- CSAH 10 Route Alternative
- Substation Parcel Boundary
- Improvement: Highway 10 Western Subarea – West
- Section Boundary
- City Boundary
- Township Boundary
- County Boundary



0 1,000 2,000 Feet

1 inch = 2,000 feet

GREAT RIVER ENERGY

MVEC

For Environmental Review Purposes Only

N
W E
S

Figure 6-1

Laketown 115-kV Transmission Line Project

Census Tracts

Carver County, Minnesota

<p>Great River Energy</p> <ul style="list-style-type: none"> Proposed Alignment Proposed Route Width Substation Parcel Boundary MV-AUT 115-kV Transmission Line MV-VTT 115-kV Transmission Line 	<p>Non-GRE Transmission</p> <ul style="list-style-type: none"> 69-kV Transmission Line 115-kV Transmission Line 230-kV Transmission Line 	<p>Census Block Group</p> <p>Census Tract</p> <ul style="list-style-type: none"> Tract 904.01 Tract 911
<ul style="list-style-type: none"> City Boundary Township Boundary County Boundary 		

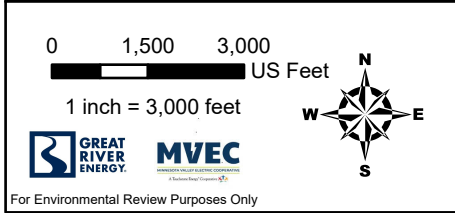
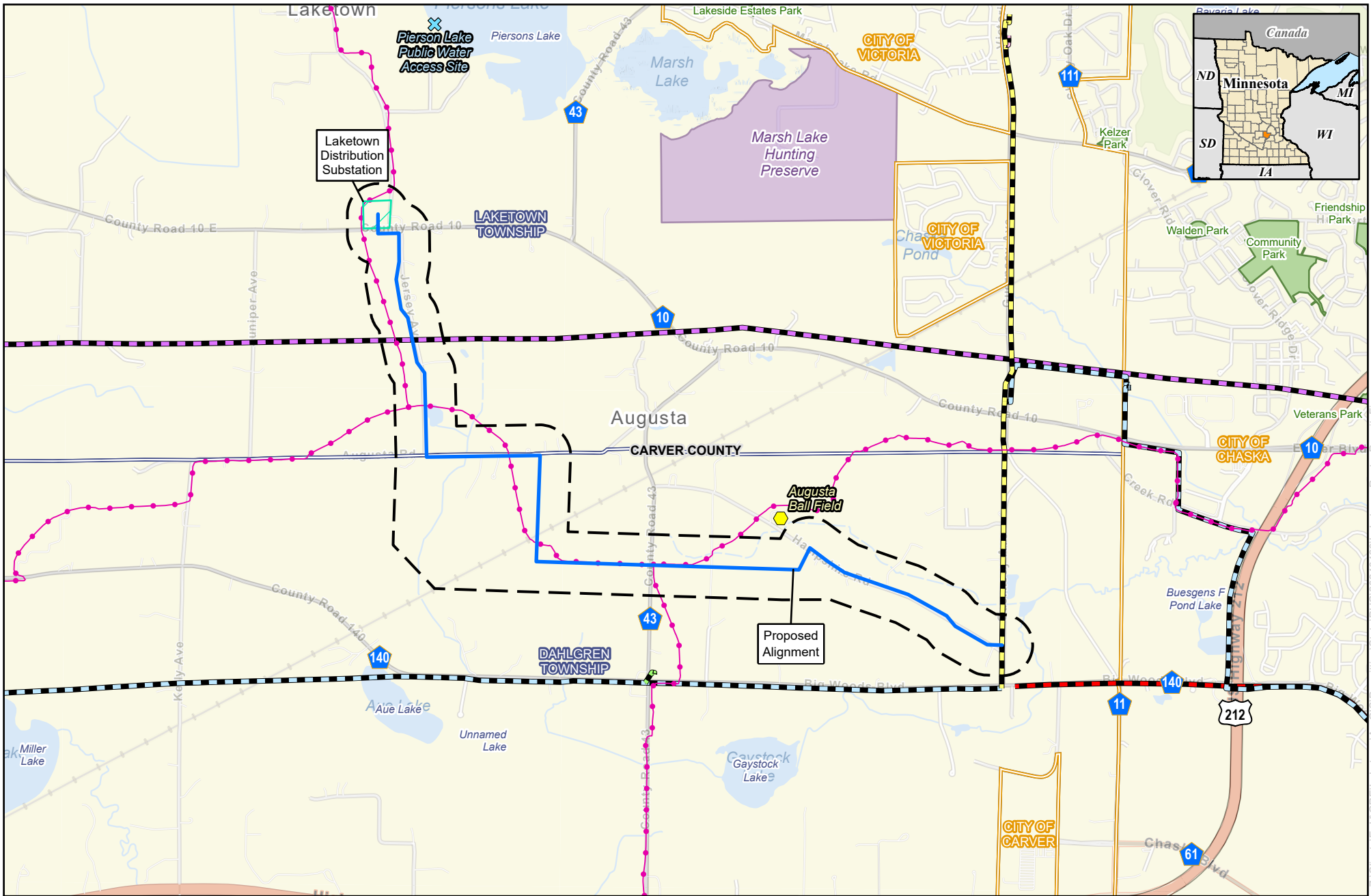


Figure 6-2
Laketown 115-kV Transmission Line Project
Recreation
Carver County, Minnesota

- | | | |
|---|---|--|
| <p>Great River Energy</p> <ul style="list-style-type: none"> — Proposed Alignment --- Proposed Route Width Substation Parcel Boundary — MV-AUT 115-kV Transmission Line — MV-BLT 115-kV Transmission Line — MV-VTT 115-kV Transmission Line | <p>Non-GRE Transmission</p> <ul style="list-style-type: none"> — 69-kV Transmission Line — 115-kV Transmission Line — 230-kV Transmission Line | <ul style="list-style-type: none"> ● Augusta Ball Field ✕ Pierson Lake Public Water Access Site — Snowmobile Trail — Local Park/Recreation Area — Marsh Lake Hunting Preserve — City Boundary — Township Boundary — County Boundary |
|---|---|--|

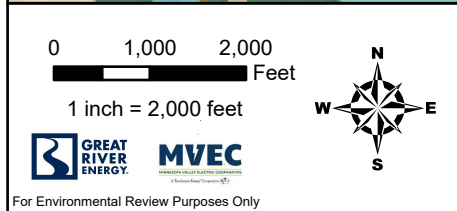
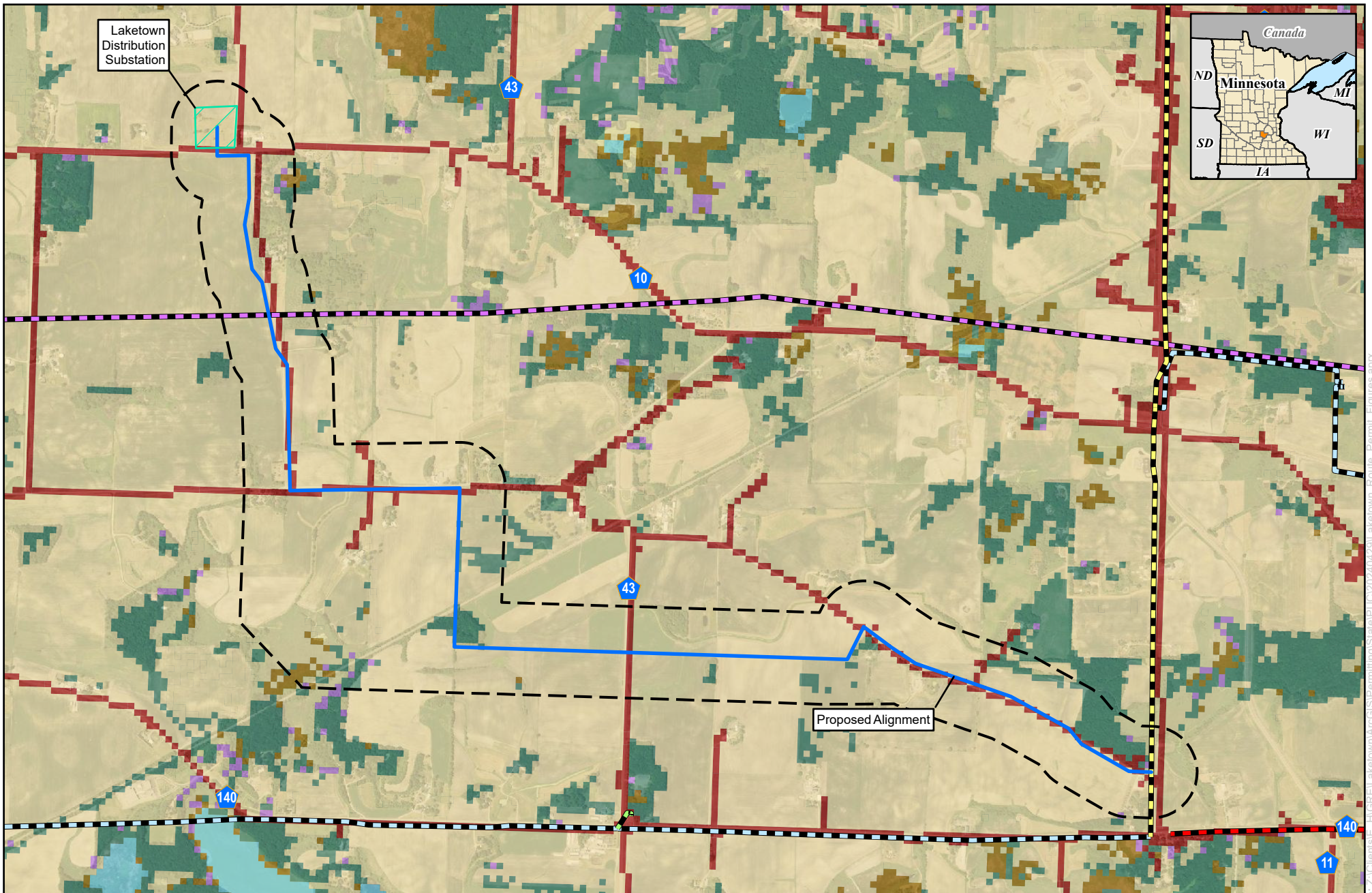
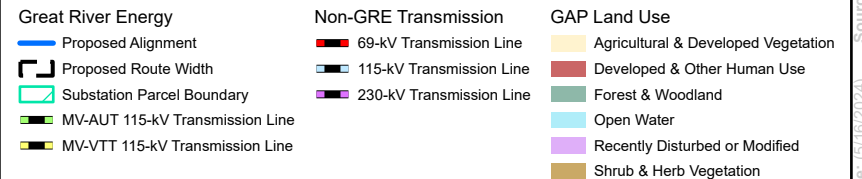
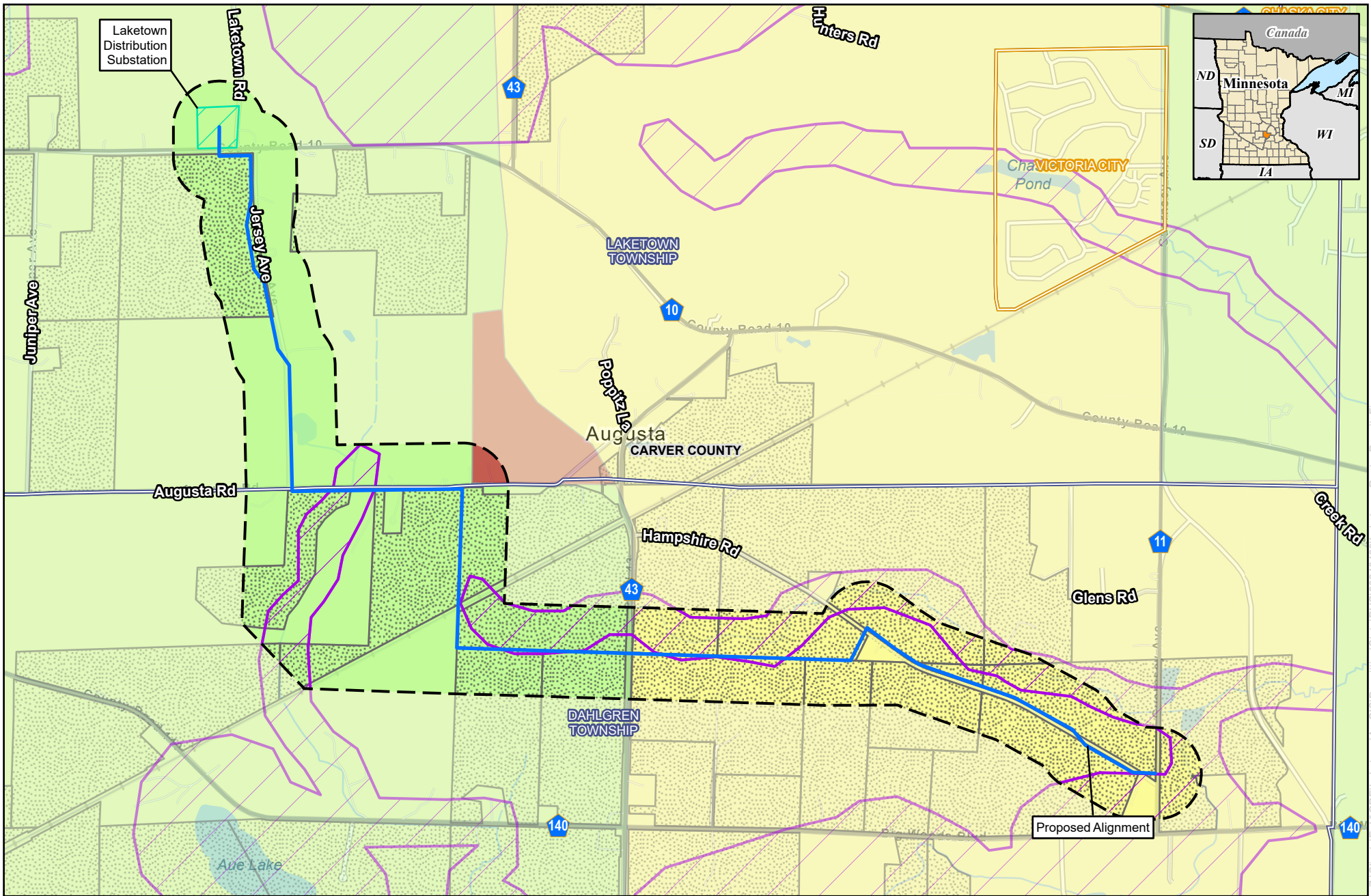


Figure 6-3
Laketown 115-kV Transmission Line Project
Land Use
Carver County, Minnesota





0 1,000 2,000
US Feet

1 inch = 2,000 feet

GREAT RIVER ENERGY **MVEC**

For Environmental Review Purposes Only

Figure 6-4
Laketown 115-kV Transmission Line Project
Zoning
Carver County, Minnesota

- | | |
|--|--------------------------|
| Great River Energy | Agricultural Policy Area |
| Proposed Alignment | Residential Cluster |
| Proposed Route Width | Transition Area |
| Substation Parcel Boundary | Shoreland Overlay |
| Metropolitan Agricultural Preserve Program | City Boundary |
| | Township Boundary |
| | County Boundary |

Source: Z:\Clients\LE_HGR\Laketown\ArcGIS\Permitting\StateP_U020240429\Laketown_Route_Figures.aprx Date: (6/20/2024)