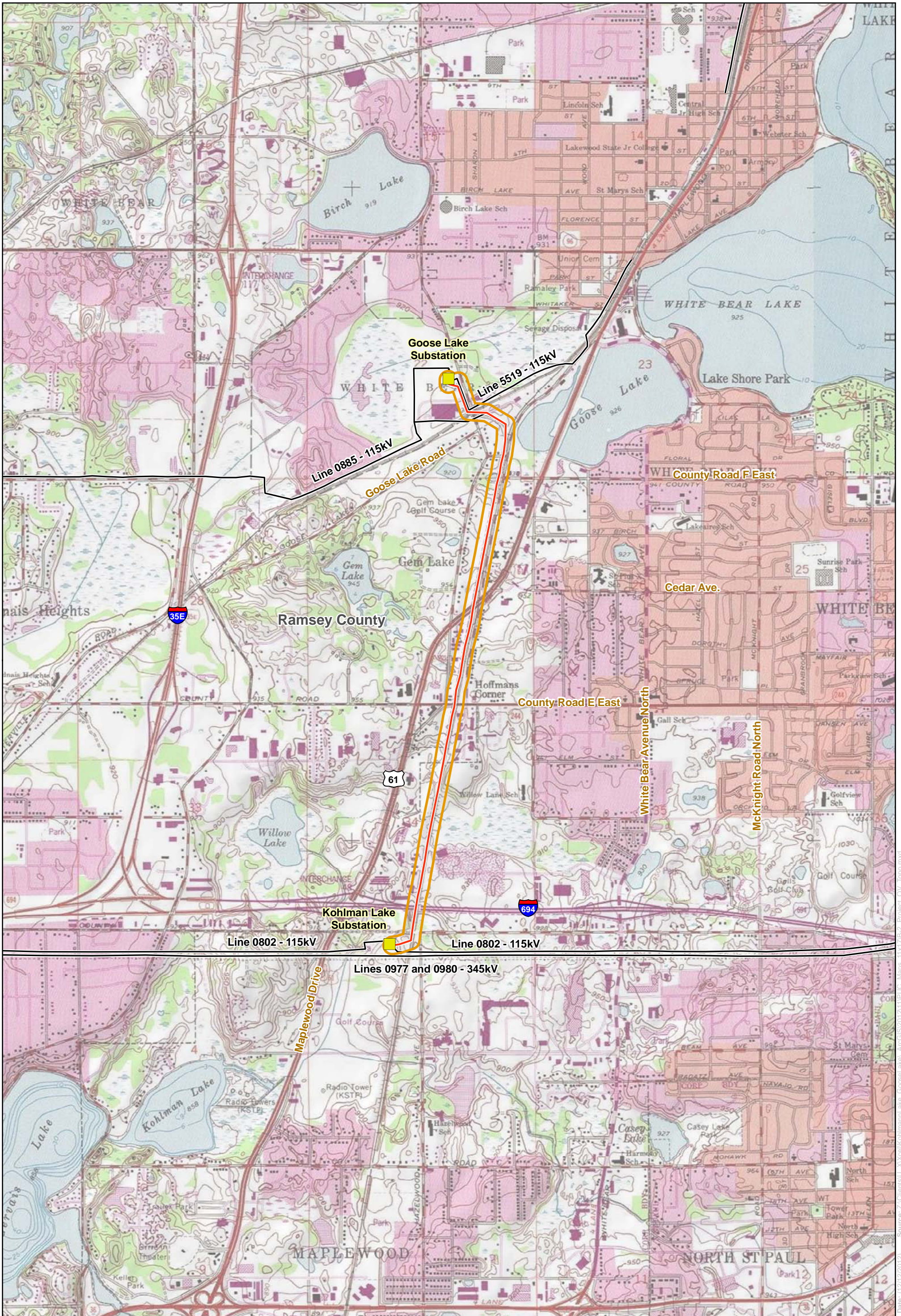


## **APPENDIX B**

### Route Maps





- Xcel Energy Substation
- Proposed Kohlman Lake to Goose Lake Rebuild to Double Circuit 115kV
- Existing Xcel Energy Transmission Lines
- Route Width

0 1,000 2,000  
Feet



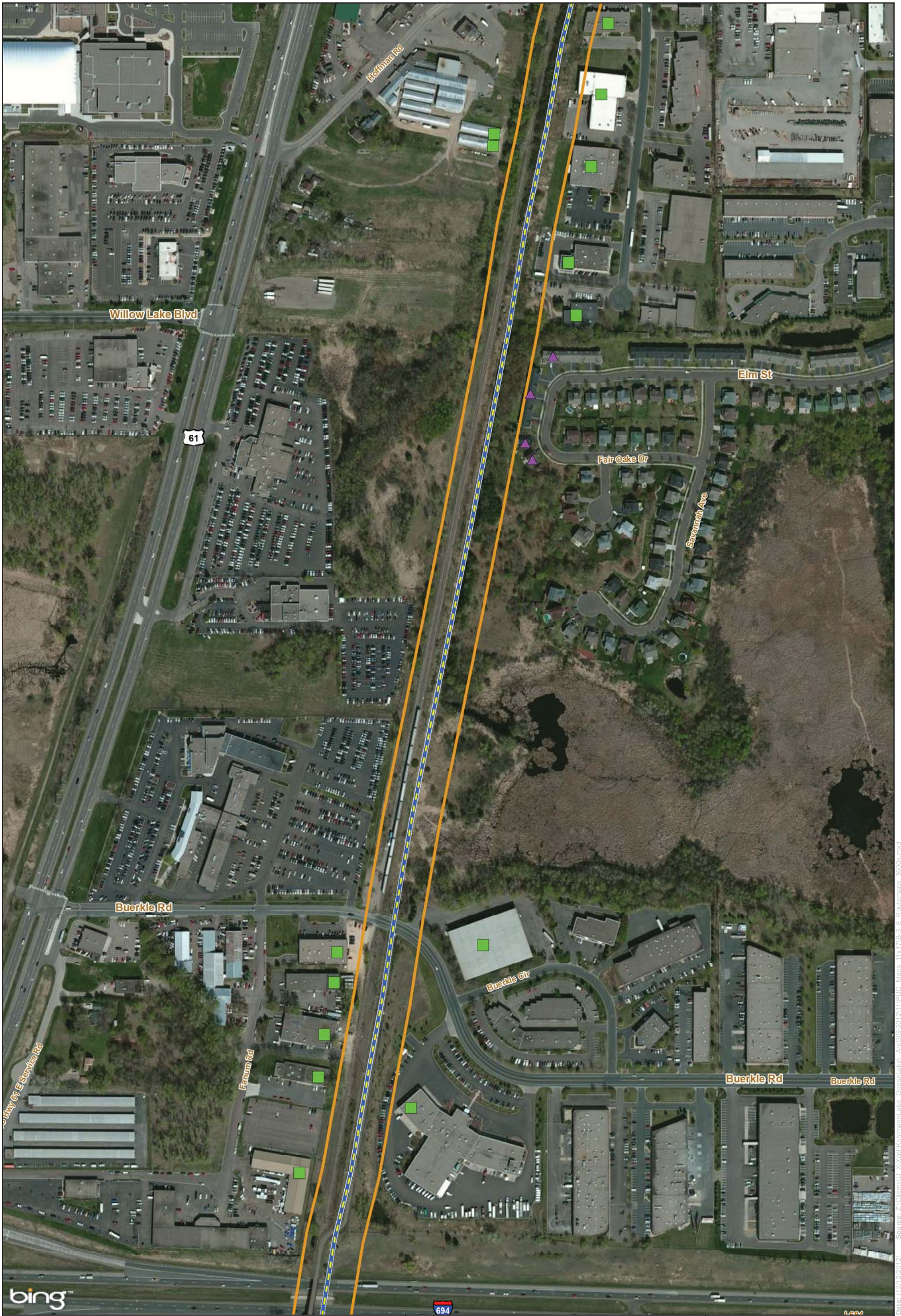
**Figure B-2**  
**Kohlman Lake to Goose Lake 115/115kV**  
**Transmission Line Rebuild Project**  
**Proposed Route - USGS Topographical Map**  
**Ramsey County, Minnesota**











Source: Topographic Base Map provided by ESRI  
 All other data from Xcel Energy, ESRI, and Merjert  
 This information is for environmental review purposes only.

Source: Z:\Clients\U\_Xcel\KohlmanLake\_GooseLake\_ArcGIS\2012\11\11\UC\_Maps\_TMX\7B-2\_Project\_OV\_topo.mxd Date: 1/21/2012





 Existing Xcel Energy Substation	 New Double Circuit (Circuit #2 and Existing Line 5519)
 Residence	 Existing Xcel Energy Transmission Lines
 Business	 New Double Circuit (Circuit #1 and Circuit #2)
 New Double Circuit (Circuit #1 and Circuit #2)	 Route Width - 200 Feet

0 150 300 Feet

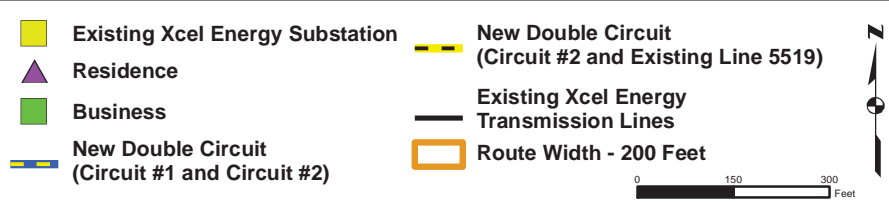
**Figure B-4**  
**Kohlman Lake to Goose Lake 115/115kV**  
**Transmission Line Rebuild Project**  
**Proposed Route Aerial Photo-based Map**  
**Ramsey County, Minnesota**

Page 2 of 6



Date: 1/21/2012 Source: Z:\Clients\U...Xcel\KohlmanLake\_GooseLake\_ArcGIS\2012\11\11\PU...Maps\_11x17\11-3\_8\_Routemaps\_3600k.mxd



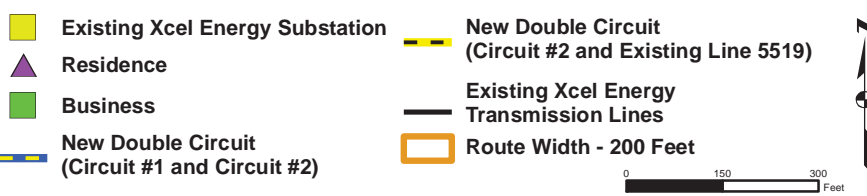


**Figure B-6**  
**Kohlman Lake to Goose Lake 115/115kV**  
**Transmission Line Rebuild Project**  
**Proposed Route Aerial Photo-based Map**  
**Ramsey County, Minnesota**

Page 4 of 6



Date: 1/21/2012 Source: Z:\Client\GIS\2012\11\11PUC\_Maps\_11x17\11-3\_8\_RouteMaps\_3600k.mxd



**Figure B-7**  
**Kohlman Lake to Goose Lake 115/115kV**  
**Transmission Line Rebuild Project**  
**Proposed Route Aerial Photo-based Map**  
**Ramsey County, Minnesota**

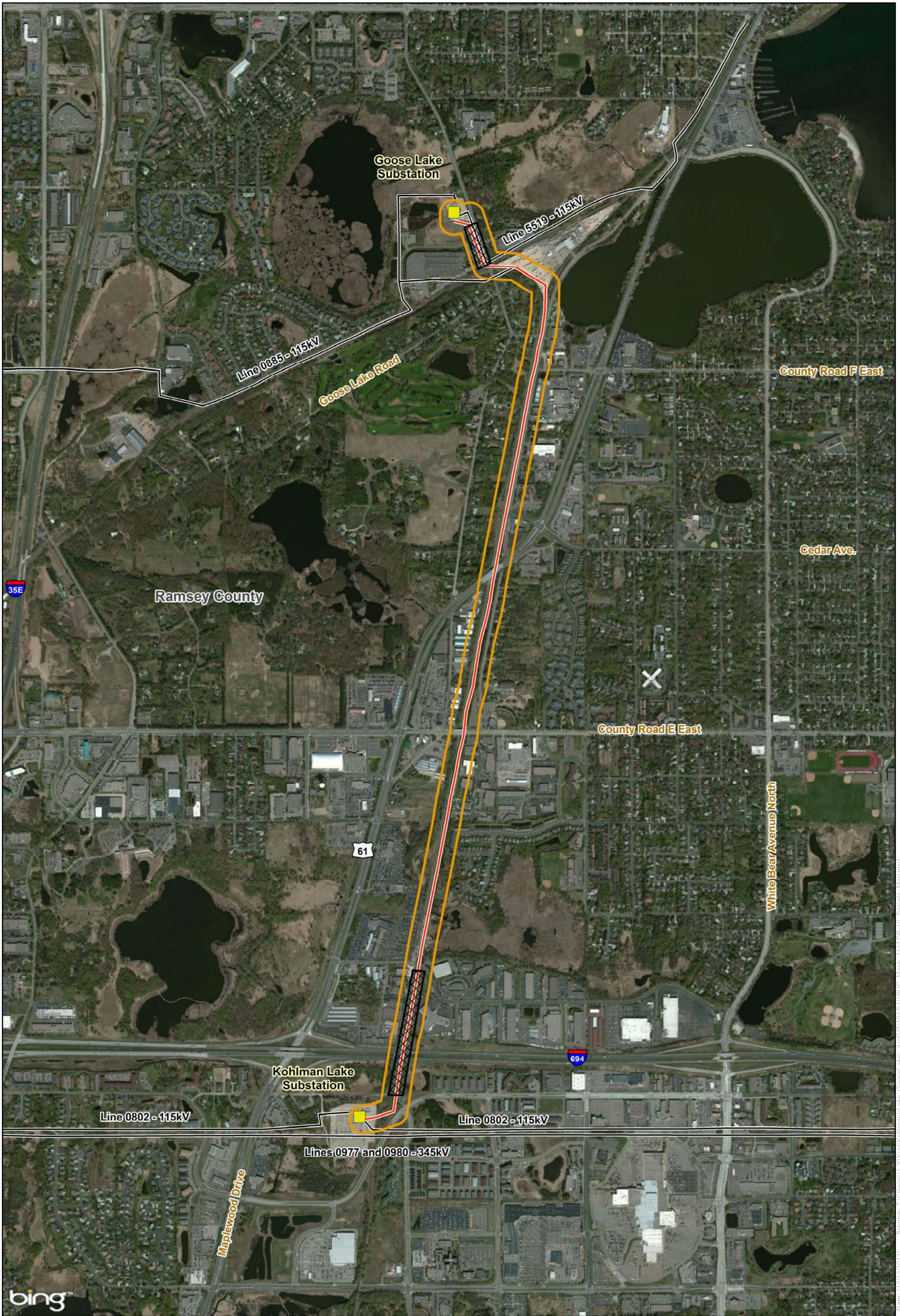




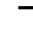


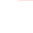
Date: (12/12/2012) Source: Z:\Clients\U\_XX\06\KohlmanLake\_GooseLake\ArcGIS\2012\11\11\PCU\_Maps\_11x17\1B-3\_8\_RouteMaps\_3600k.mxd










 Xcel Energy Substation	 Route Width
 Existing Xcel Energy Transmission Lines	 Approximate Area of New ROW Acquisition
 Proposed Kohlman Lake to Goose Lake	
 Rebuild to Double Circuit 115kV	

0 1,000 2,000 Feet

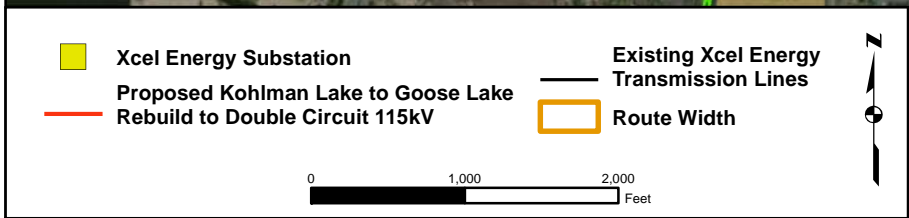
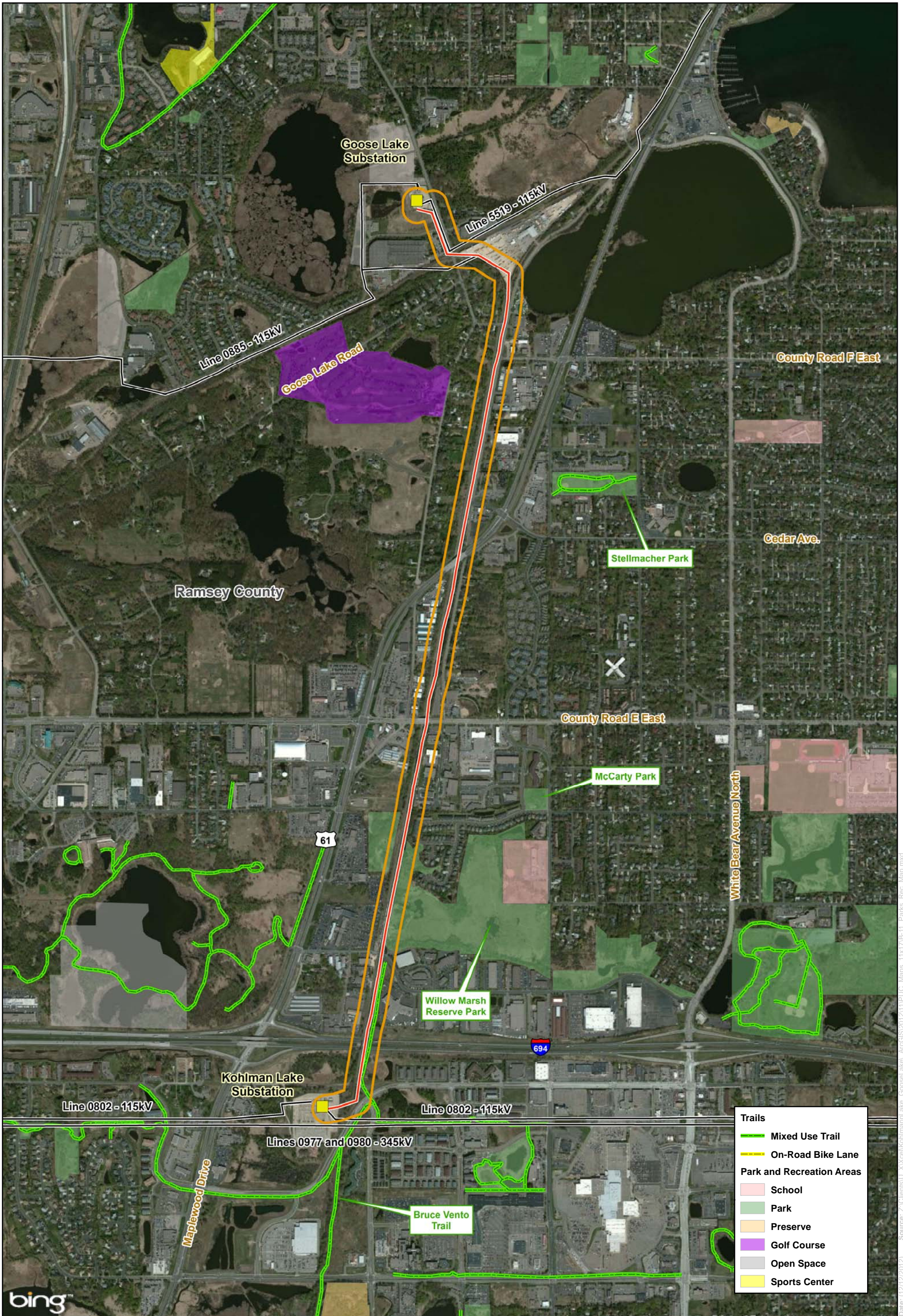
**Figure B-10**  
**Kohlman Lake to Goose Lake 115/115kV**  
**Transmission Line Rebuild Project**  
**Approximate Area of New ROW Acquisition**  
**Ramsey County, Minnesota**



**Xcel Energy**  
RESPONSIBLE BY NATURE™

Source: Parcel Boundary Data from Xcel  
All other data from Xcel Energy, ESRI, and Merjent  
This information is for environmental review purposes only.

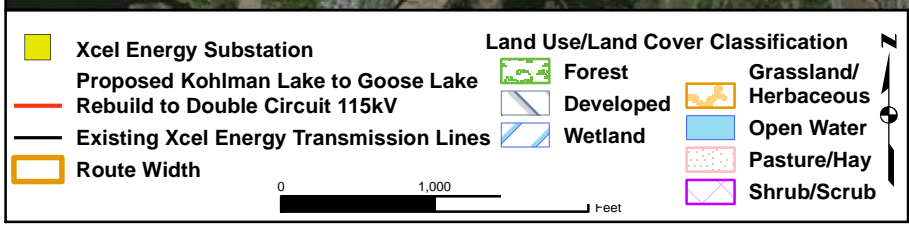
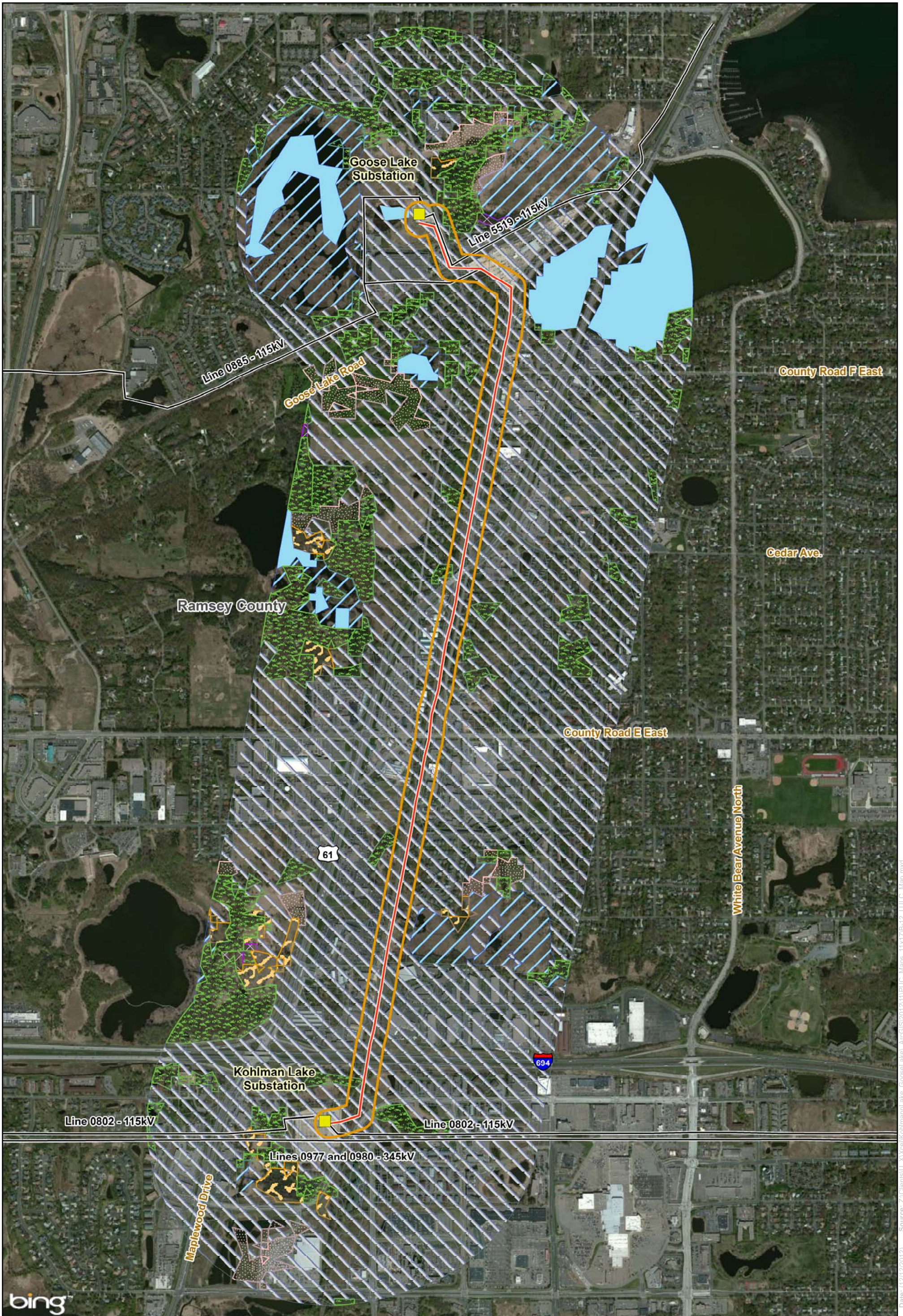
Date: 1/21/2012 Source: Z:\Client\StU...Xcel\KohlmanLake\_GooseLake\XcelGIS\2012\11\11\PU...Maps\_11x17\5-10\_Parcels\_Map.mxd



**Figure B-11**  
**Kohlman Lake to Goose Lake 115/115kV**  
**Transmission Line Rebuild Project**  
**Parks and Recreational Areas**  
**Ramsey County, Minnesota**

Source: Park and Rec Data obtained from City of White Bear Lake, White Bear Township, City of Maplewood, and Ramsey County. All other data from Xcel Energy, ESRI, and Mapbox. This information is for environmental review purposes only.

Date: 1/21/2012 Source: Z:\Clients\UXX\Xcel\KohlmanLake\_GooseLake\_ArcGIS\2012\11\11\UC\_Maps\_11x17\B-11\_Parks\_Rec\_Map.mxd

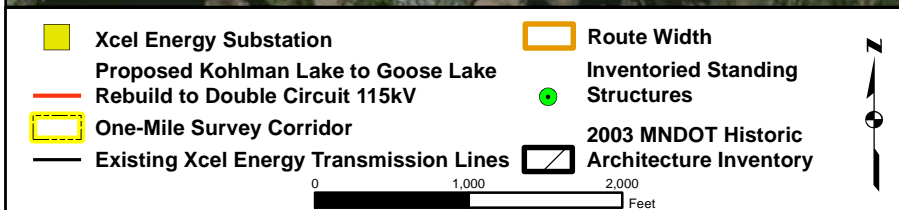
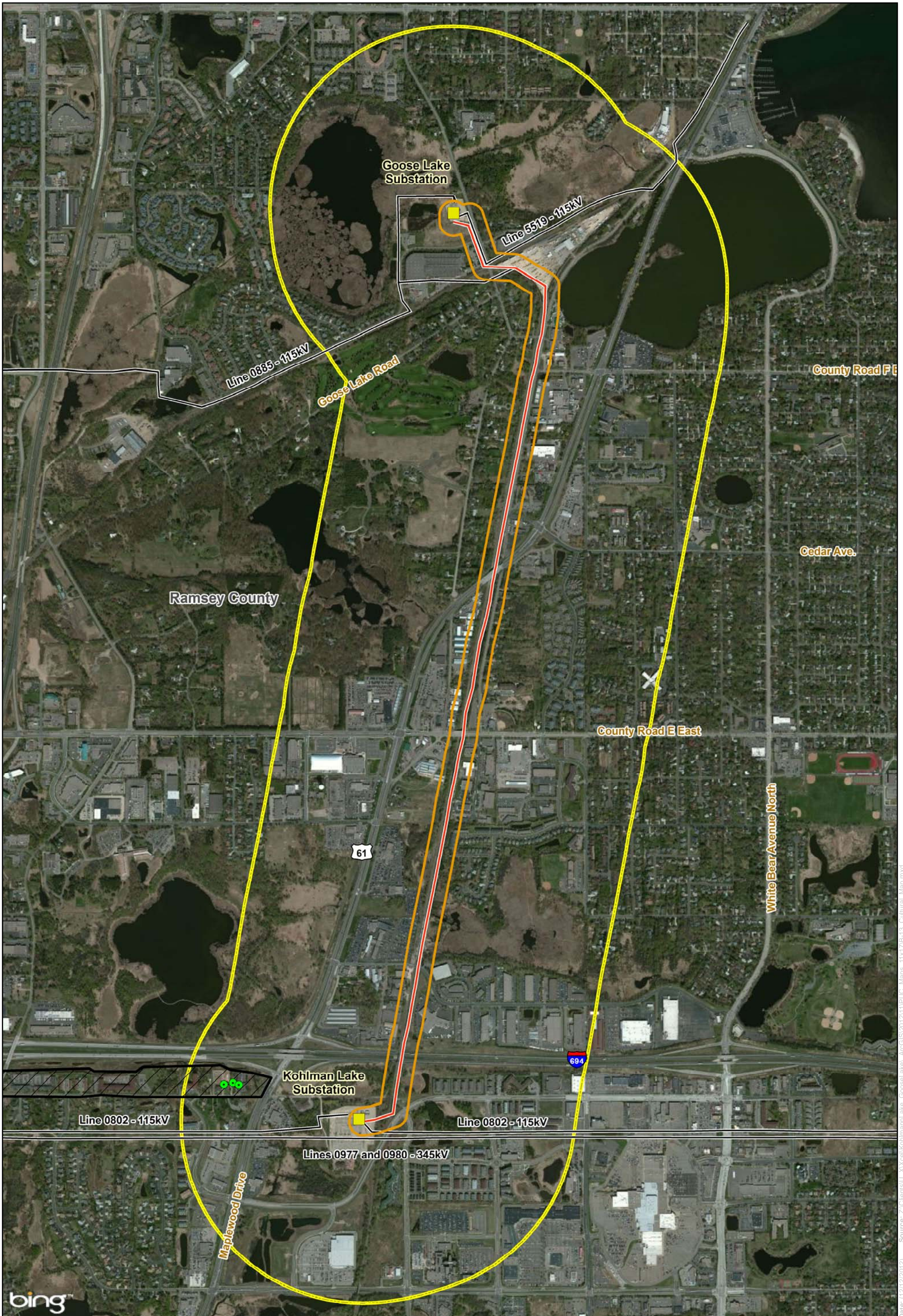


**Figure B-12**  
**Kohlman Lake to Goose Lake 115/115kV**  
**Transmission Line Rebuild Project**  
**Land Use Land Cover**  
**Ramsey County, Minnesota**

**Xcel Energy**  
 RESPONSIBLE BY NATURE™

Source: Land Use Land Cover from USDA/NRCS 2006  
 All other data from Xcel Energy, ESRI, and Merjent  
 This information is for environmental review purposes only.

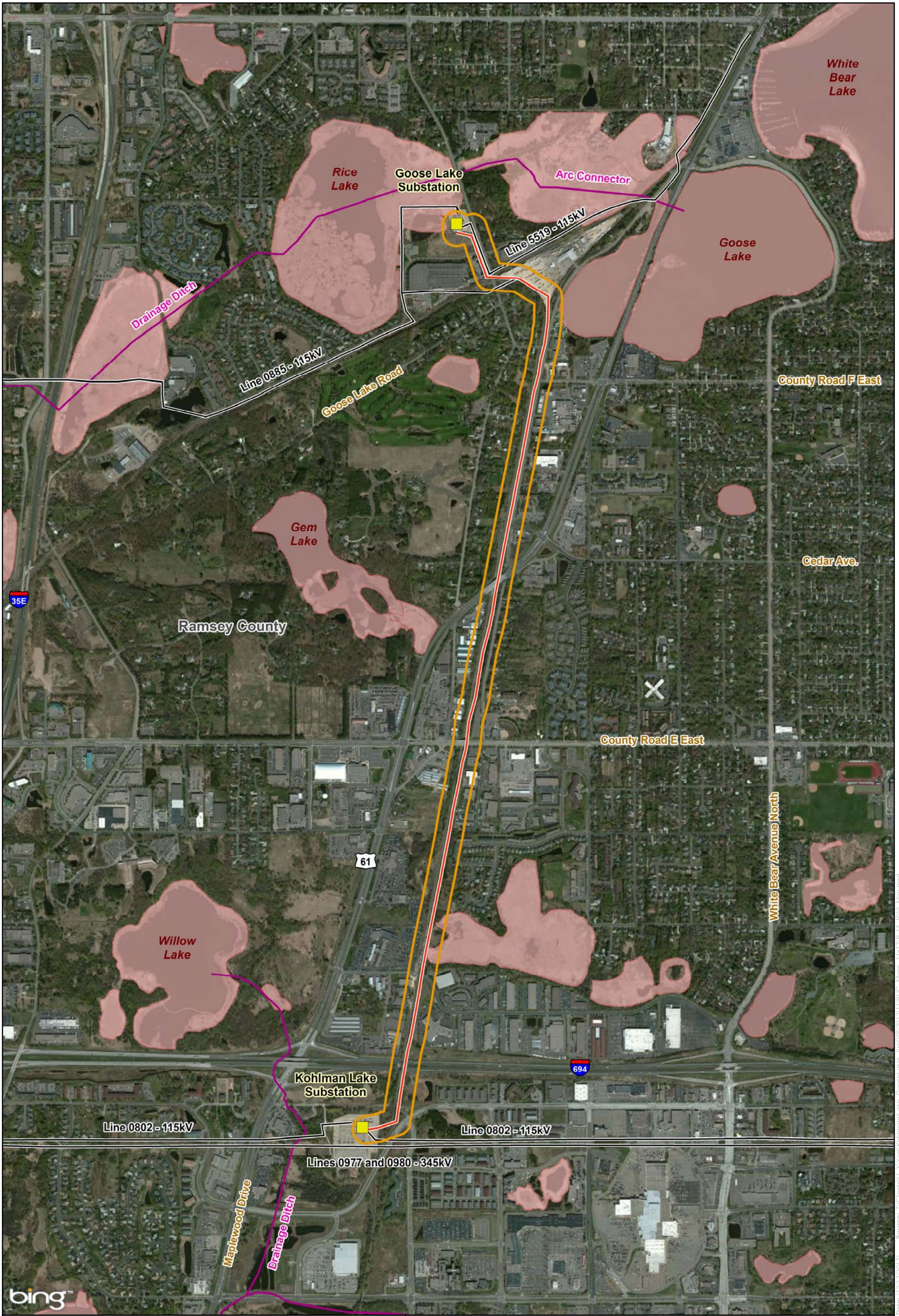
Date: (1/21/22)2012) Source: Z:\Clients\U-Xcel\KohlmanLake\_GooseLake\_CarcGIS2012\11PUC\_Maps\_11X17/B-12\_LULC\_Map.mxd









**Figure B-13**  
**Kohlman Lake to Goose Lake 115/115kV**  
**Transmission Line Rebuild Project**  
**Archaeological and Historical Resources**  
**Ramsey County, Minnesota**


Source: Cultural Resources Data Provided by the SHPO  
 All other data from Xcel Energy, ESRI, and Merjet  
 This information is for environmental review purposes only.

Date: (12/12/2012) Source: Z:\Clients\U\_Xcel\KohlmanLake\_GooseLake\115kV\115kV\_Cultural\_Map.mxd



	Xcel Energy Substation		Route Width
	Proposed Kohlman Lake to Goose Lake Rebuild to Double Circuit 115kV		Public Waters Inventory
	Existing Xcel Energy Transmission Lines		Public Waters Inventory

0 1,000 2,000 Feet

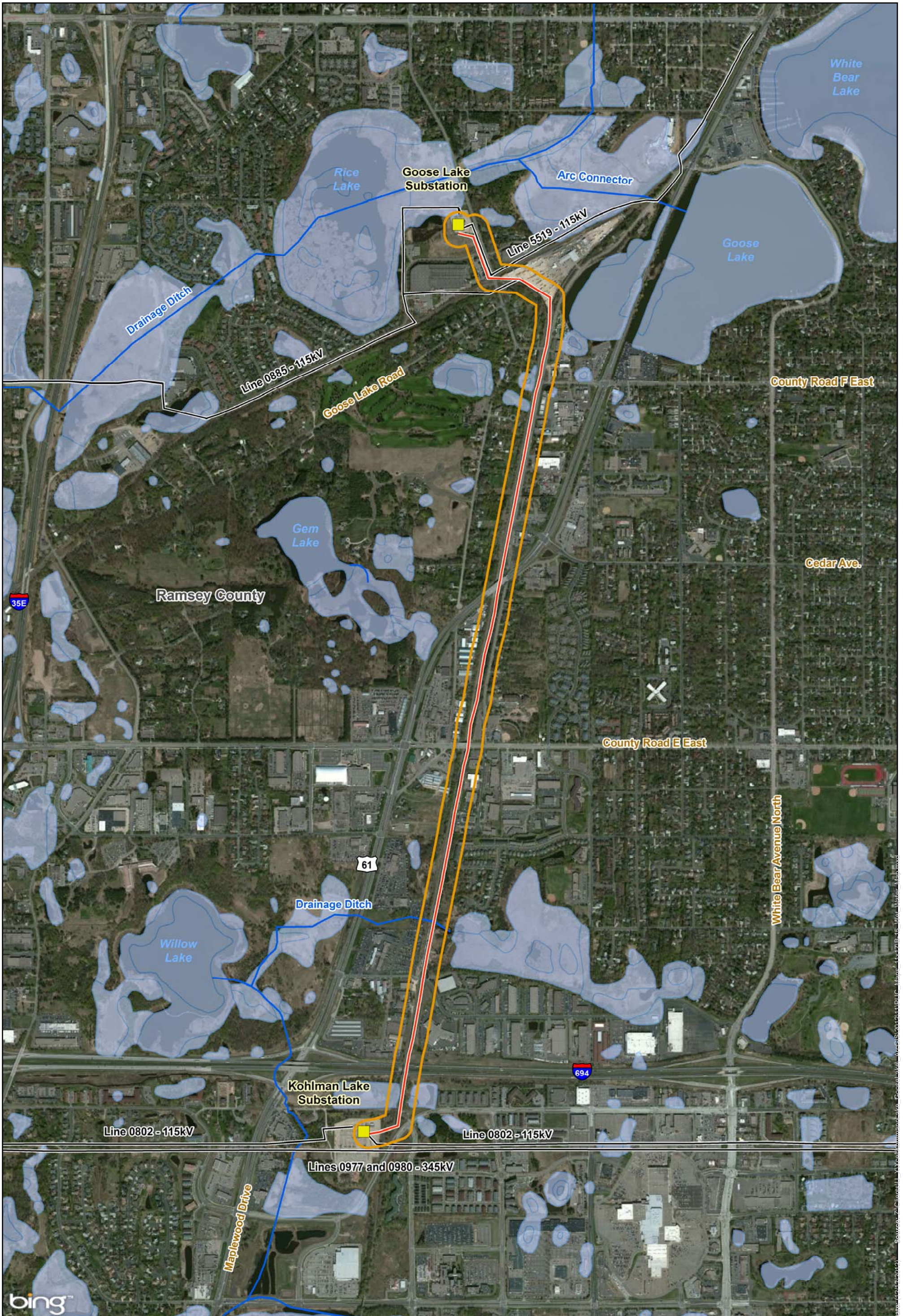


**Figure B-14**  
**Kohlman Lake to Goose Lake 115/115kV**  
**Transmission Line Rebuild Project**  
**Public Waters Inventory**  
**Ramsey County, Minnesota**



Source: Public Waters Inventory provided by the MN DNR  
 All other data from Xcel Energy, ESRI, and Merjnt  
 This information is for environmental review purposes only.

Date: 1/21/2012 Source: Z:\Clients\U...Xcel\RamseyCounty\Map...GooseLake\_ARCGIS\2012\11\115kV\_Map.mxd



**Figure B-15**  
**Kohlman Lake to Goose Lake 115/115kV**  
**Transmission Line Rebuild Project**  
**Wetlands and Waterbodies**  
**Ramsey County, Minnesota**



Source: NWI and Waterbody Data Provided by the MN DNR  
 All other data from Xcel Energy, ESRI, and Meriant  
 This information is for environmental review purposes only.

- Xcel Energy Substation
- Route Width
- Rebuild to Double Circuit 115kV
- Waterbody
- NWI Wetland
- Existing Xcel Energy Transmission Lines

0 1,000 2,000  
 Feet





