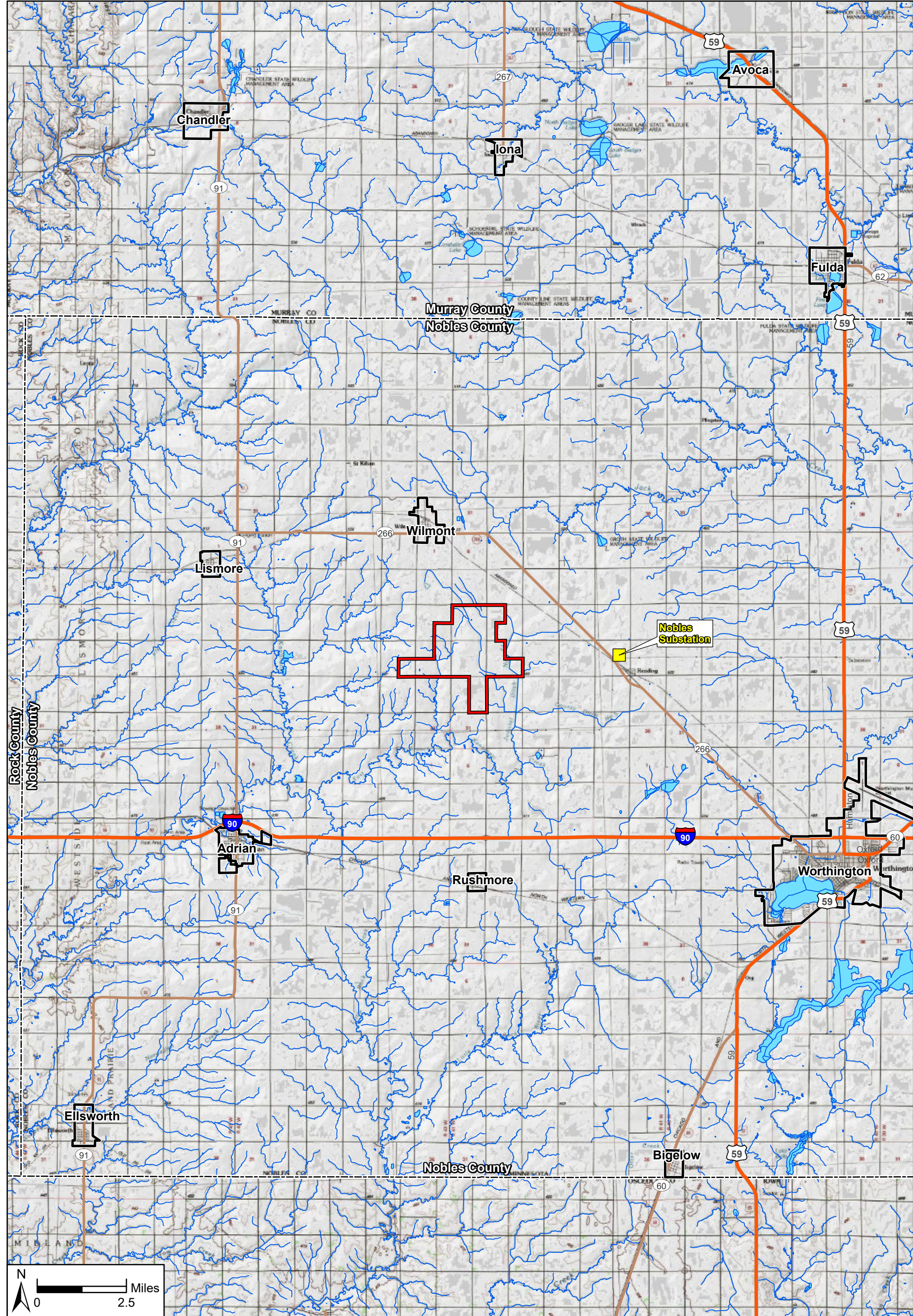


Appendix A

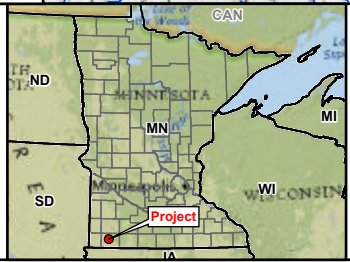
Project Maps

Community Wind South Repower Project
Nobles County, Minnesota

This page is intentionally blank



Data Source(s): Westwood (2021); ESRI WMS USA Topo & National Geographic Basemaps (Accessed 2021); USGS NHD Dataset (Accessed 2021); ESRI (2021).

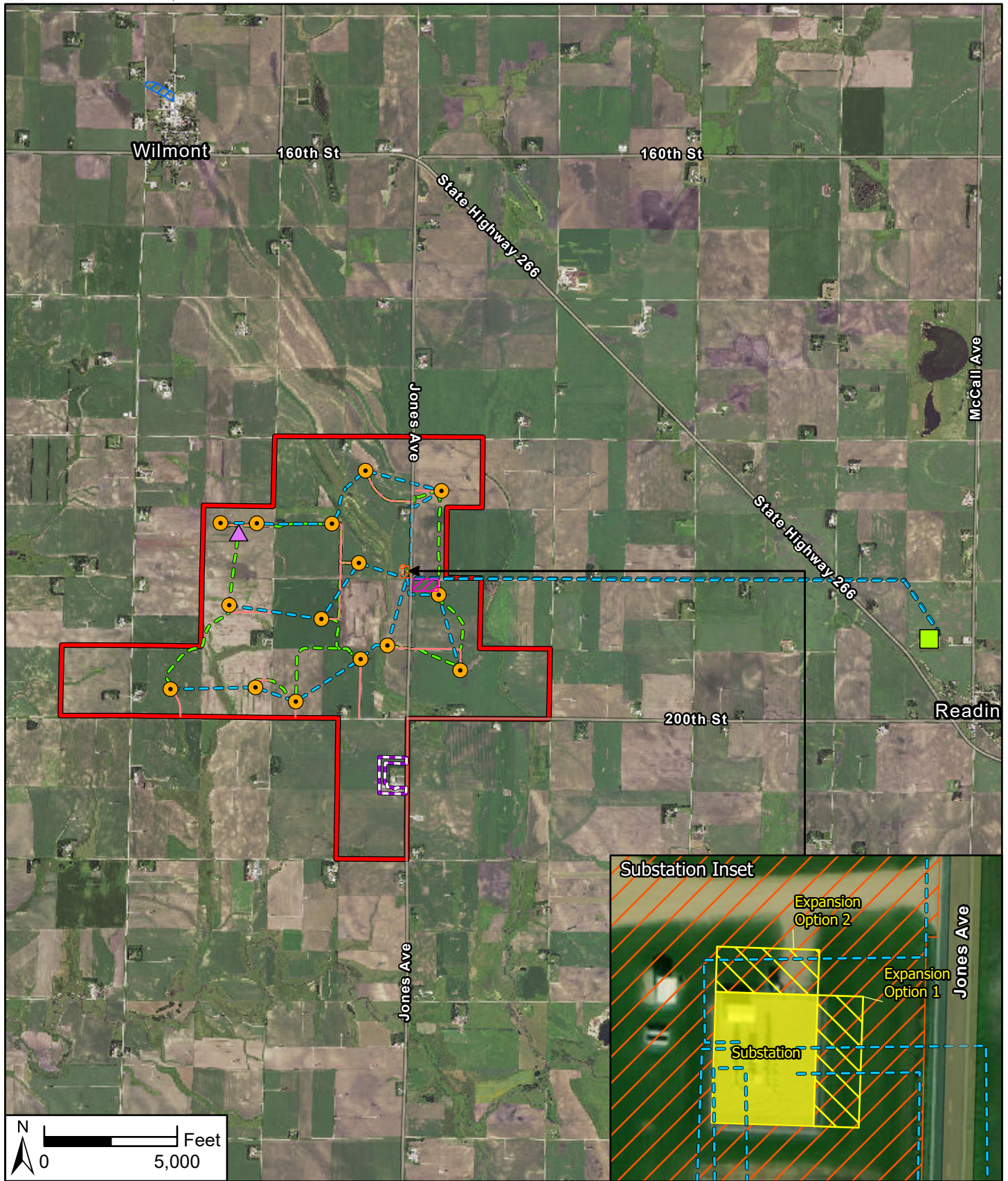


Legend	
	Existing Substation
	Project Boundary
	Municipal Boundary
	County Boundary
	NHD Flowline
	NHD Waterbody
	Major Highway
	Major Road

Community Wind South Repower Project

Nobles County, Minnesota

Project Location



Data Source(s): Westwood (2021); Minnesota NAIP Imagery (2020); Ventyx (2021).

Legend

- Project Boundary
- Turbine
- ▲ MET Tower
- Existing Substation
- Project Substation
- Potential ADLS Location
- Existing Access Road
- Collection
- Crane Path
- Laydown/Storage Yard 1
- Laydown/Storage Yard 2
- Laydown/Storage Yard 3

Community Wind South Repower Project

Nobles County, Minnesota

Turbine Layout

Westwood
 Toll Free (888) 937-5150 westwoodps.com
 Westwood Professional Services, Inc.

Map Document: N:\0226682.00\GIS\Proj\R0026682_040_SitePermitMaps.aprx 9/24/2021 8:18 AM

Typical
Landscape
Photo 1



Typical
Landscape
Photo 2



Typical
Landscape
Photo 3



Data Source(s): Westwood (2021).

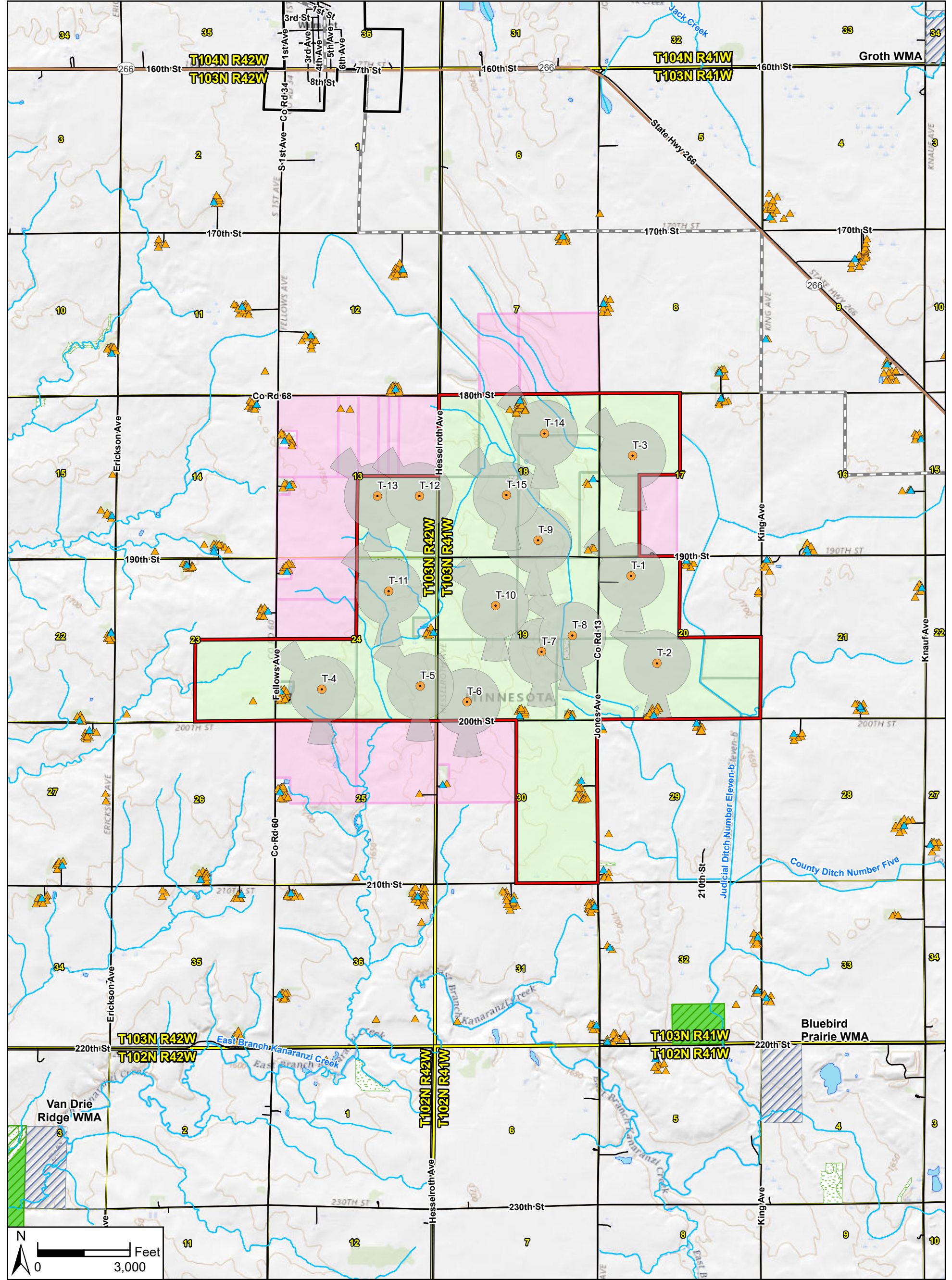
Community Wind South Repower Project

Nobles County, Minnesota

Typical Landscape Within Project Area

Westwood

Toll Free (888) 937-5150 westwoodps.com
Westwood Professional Services, Inc.



Data Source(s): Westwood (2021); USGS Topo Basemap (2021); USGS NHD Dataset (2013); ESRI (2021); U.S. Fish and Wildlife Service (Various dates); MnDNR (Various Dates); National Conservation Easement Database (Accessed 2021); USDA & FSA (2009); MN FSA. (2015).

Legend

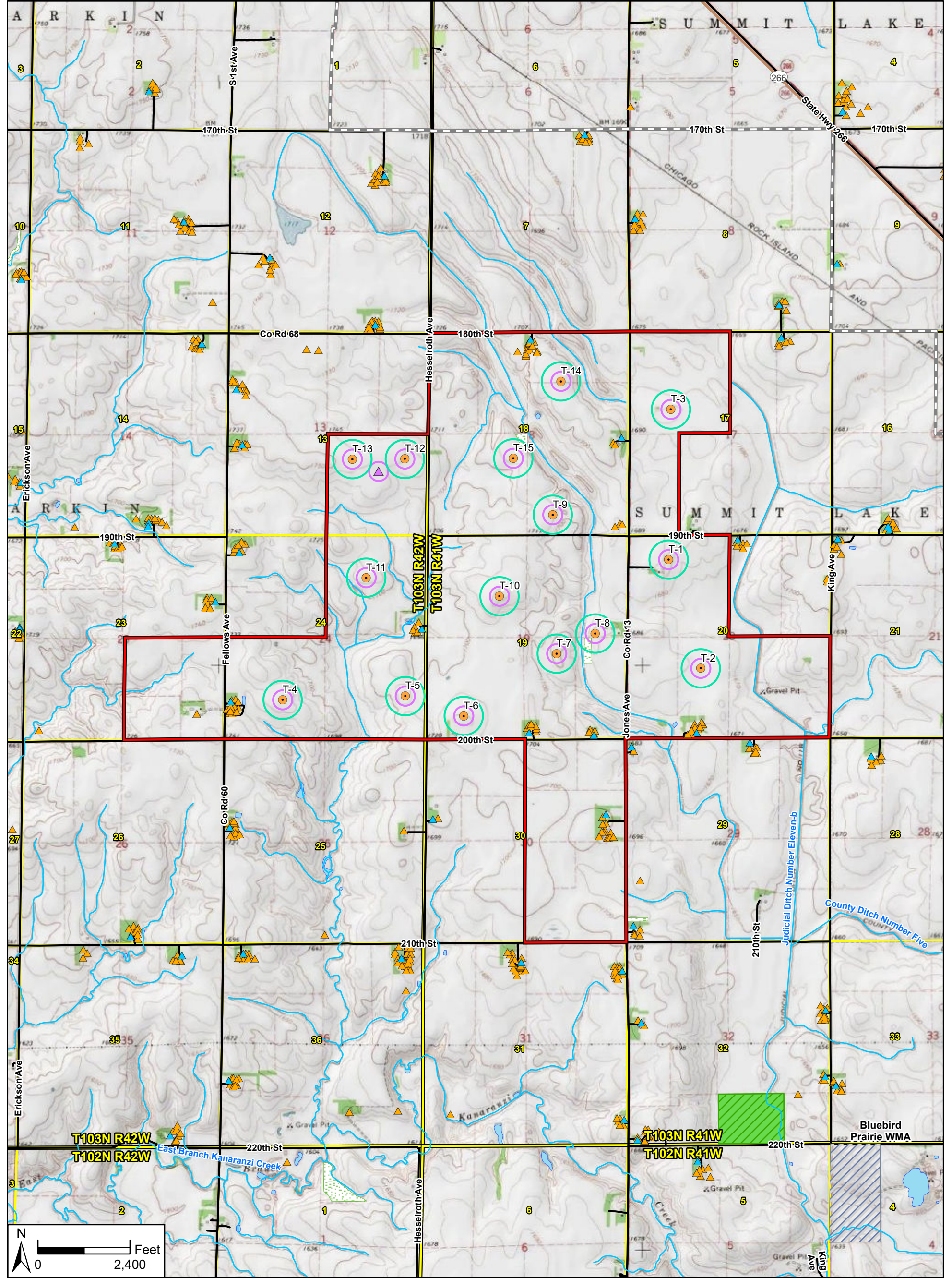
- Existing Turbine
- Wind Access Buffer
- ▲ Occupied Building
- ▲ Unoccupied Building
- Existing Lease Agreement
- Wind Lease Agreements with Xcel Energy
- Road
- Major Highway
- Major Road
- Snowmobile Trail
- NHD Flowline
- NHD Waterbody
- Wildlife Management Area
- State Funded Conservation Easement
- Federal Conservation Easement
- Conservation Reserve Program (CRP) Land
- Project Boundary
- Municipal Boundary
- County Boundary
- PLS Township Boundary
- PLS Section Boundary

Community Wind South Repower Project
Nobles County, Minnesota

Wind Access Buffer Setback



Toll Free (888) 937-5150 westwoodps.com
Westwood Professional Services, Inc.



Community Wind South Repower Project

Nobles County, Minnesota

Setbacks

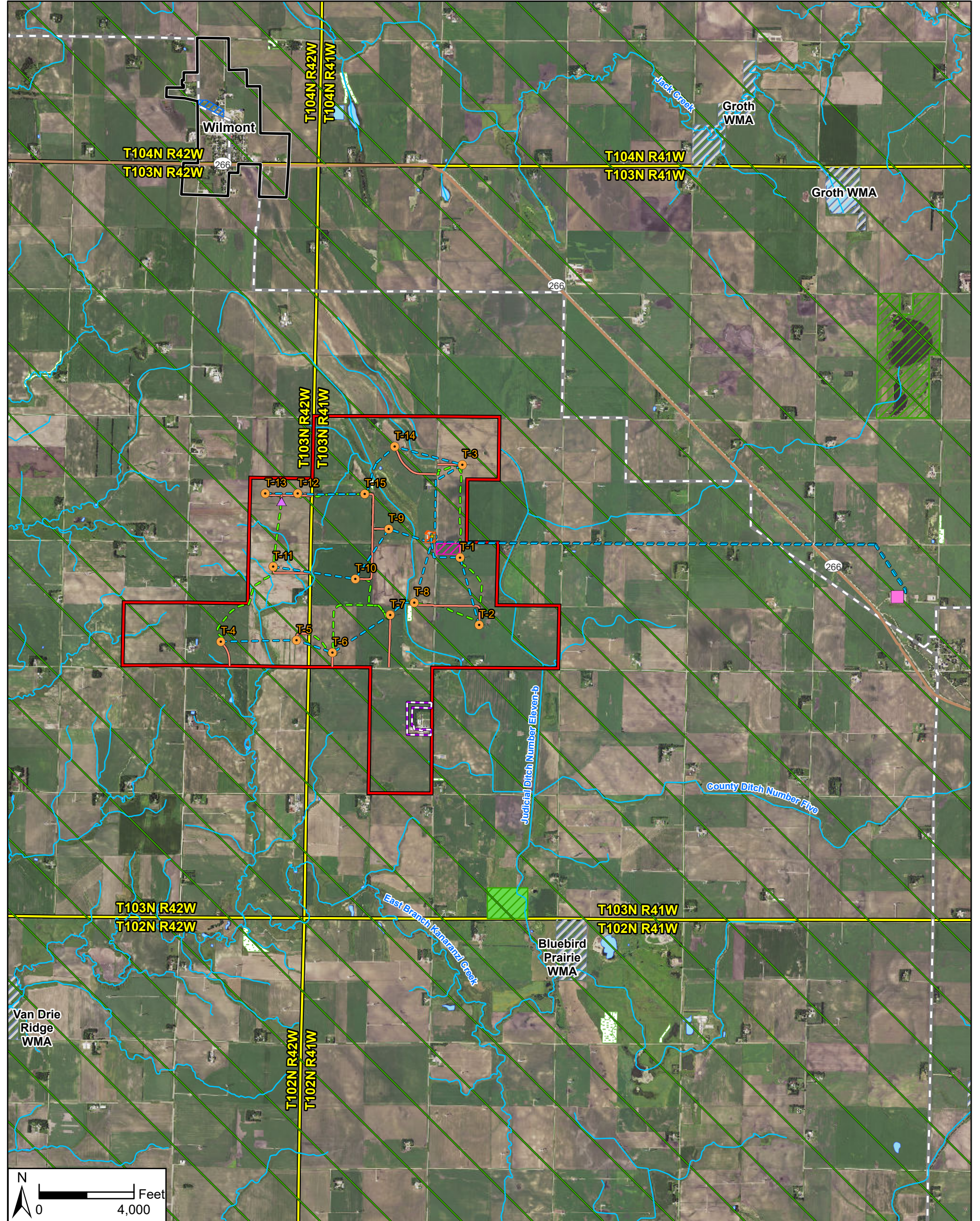
Data Source(s): Westwood (2021); Minnesota NAIP Imagery (Accessed 2021); USGS NHD Dataset (2013); ESRI (2021); U.S. Fish and Wildlife Service (Various dates); MnDNR (Various Dates); National Conservation Easement Database (Accessed 2021); USDA & FSA (2009); MN FSA, (2015).

Legend

- Existing Turbine
- MET Tower
- Road Setback: 250ft
- Residence Setback: 500ft
- Occupied Building
- Unoccupied Building
- Major Highway
- Major Road
- NHD Flowline
- NHD Waterbody
- Wildlife Management Area
- Conservation Reserve Program (CRP) Land
- Road
- Snowmobile Trail
- State-Funded Conservation Easement
- Federal Conservation Easement
- Project Boundary
- Municipal Boundary
- County Boundary
- PLS Township Boundary
- PLS Section Boundary

Westwood

Toll Free (888) 937-5150 westwoodps.com
Westwood Professional Services, Inc.



Data Source(s): Westwood (2021); MnGeo WMS (Accessed 2021); USGS NHD Dataset (2013); ESRI (2021); U.S. Fish and Wildlife Service (Various dates); MnDNR (Various Dates); National Conservation Easement Database (2021); USDA & FSA (2009); MN FSA (2015).

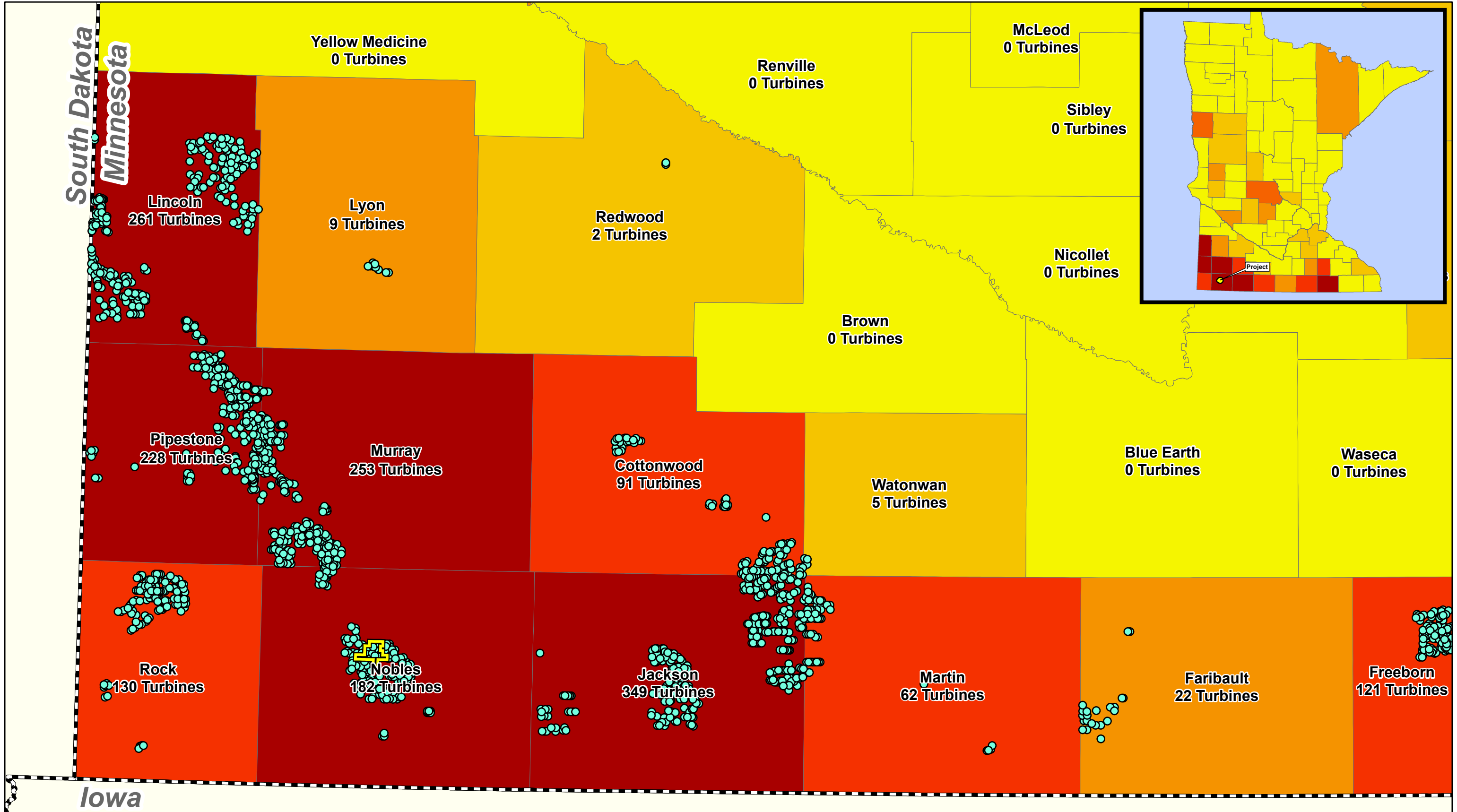
Legend

- Turbine
- ▲ MET Tower
- Existing Access Road
- - - Collection
- - - Crane Path
- Existing Substation
- Project Substation
- ▨ Laydown/Storage Yard 1
- ▨ Laydown/Storage Yard 2
- ▨ Laydown/Storage Yard 3
- ▭ Potential ADLS Location
- NHD Flowline
- NHD Waterbody
- ▨ National Wildlife Refuge
- ▨ Waterfowl Production Area
- ▨ Wildlife Management Area
- ▨ State Funded Conservation Easement
- Major Highway
- Major Road
- Railroad
- ▨ Designated Wildlife Lake
- ▨ Federal Conservation Easement
- ▨ Conservation Reserve Program (CRP) Land
- ▨ USFWS Critical Habitat Area
- ▭ Project Boundary
- ▭ Municipal Boundary
- - - County Boundary
- ▭ PLS Township Boundary
- - - Snowmobile Trail

Community Wind South Repower Project
Nobles County, Minnesota

Recreation, Wildlife, & Protected Areas

South Dakota
Minnesota

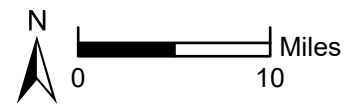
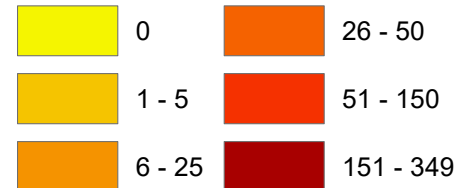


Data Source(s): Westwood (2021); ESRI (2012); MNDNR (2010); MNGeo (2020).

Legend

- Project Boundary
- Existing Turbines
- State Boundary

Turbines By County



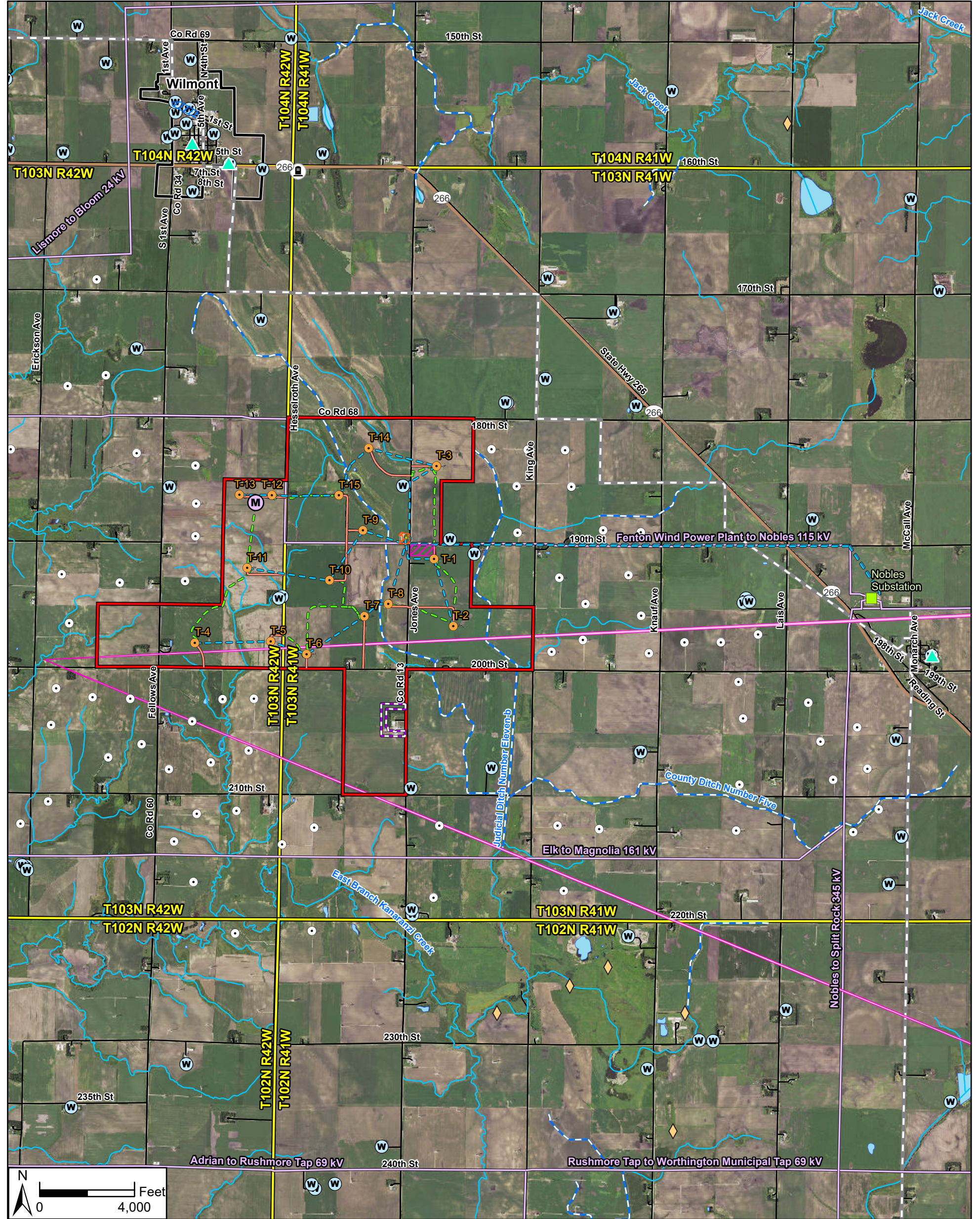
Westwood

Toll Free (888) 937-5150 westwoodps.com
Westwood Professional Services, Inc.

**Community Wind South
Repower Project**

Nobles County, Minnesota

Existing Wind Turbine Locations



Data Source(s): Westwood (2021); USGS NHD Dataset (2013); ESRI (2021); Ventyx Velocity Suite, Ventyx Energy LLC. (Accessed 2021); MNDNR (Accessed 2021); U.S. Geographic Names Information System Schools (2014); Minnesota Geological Survey (2011); U.S. Geographic Names Information System Cemeteries (2005); Census Bureau (2015), MnGeo WMS (2021).

Legend

- | | | |
|---------------------------|------------------------|---|
| ● Existing Turbine | 🏫 School | — Existing Transmission Line (Location Approximate) |
| ○ Nearby Wind Turbine | ✈️ Airport | — Existing Pipeline (Location Approximate) |
| Ⓜ Met Tower | Ⓜ Well Location | — Drainage Ditch |
| 🟢 Existing Substation | 🏠 Fresnel Zone | — NHD Flowline |
| 🟡 Project Substation | 🛣 Existing Access Road | 🟦 NHD Waterbody |
| 🟠 Laydown/Storage Yard 1 | — Collection | 🔴 Project Boundary |
| 🟡 Laydown/Storage Yard 2 | — Crane Path | 🏠 Municipal Boundary |
| 🟢 Laydown/Storage Yard 3 | 🛣 Major Highway | 🏠 County Boundary |
| 🟡 Potential ADLS Location | 🛣 Major Road | 🟡 PLS Township Boundary |
| 🔹 Gravel Pit | 🛣 Minor Road | 🟢 PLS Section Boundary |
| 🏛 Church | 🛣 Railroad | |
| 🏠 Cemetery | 🛣 Snowmobile Trail | |

Community Wind South Repower Project
Nobles County, Minnesota

Infrastructure