

V:\1937\Active\193708962\03_data\gis_cad\gis\mxd\193708962_Pine_MN_Solar\193708962_Pine_MN_Solar_save2.aprx Revised: 2022-11-30 By: jmarly

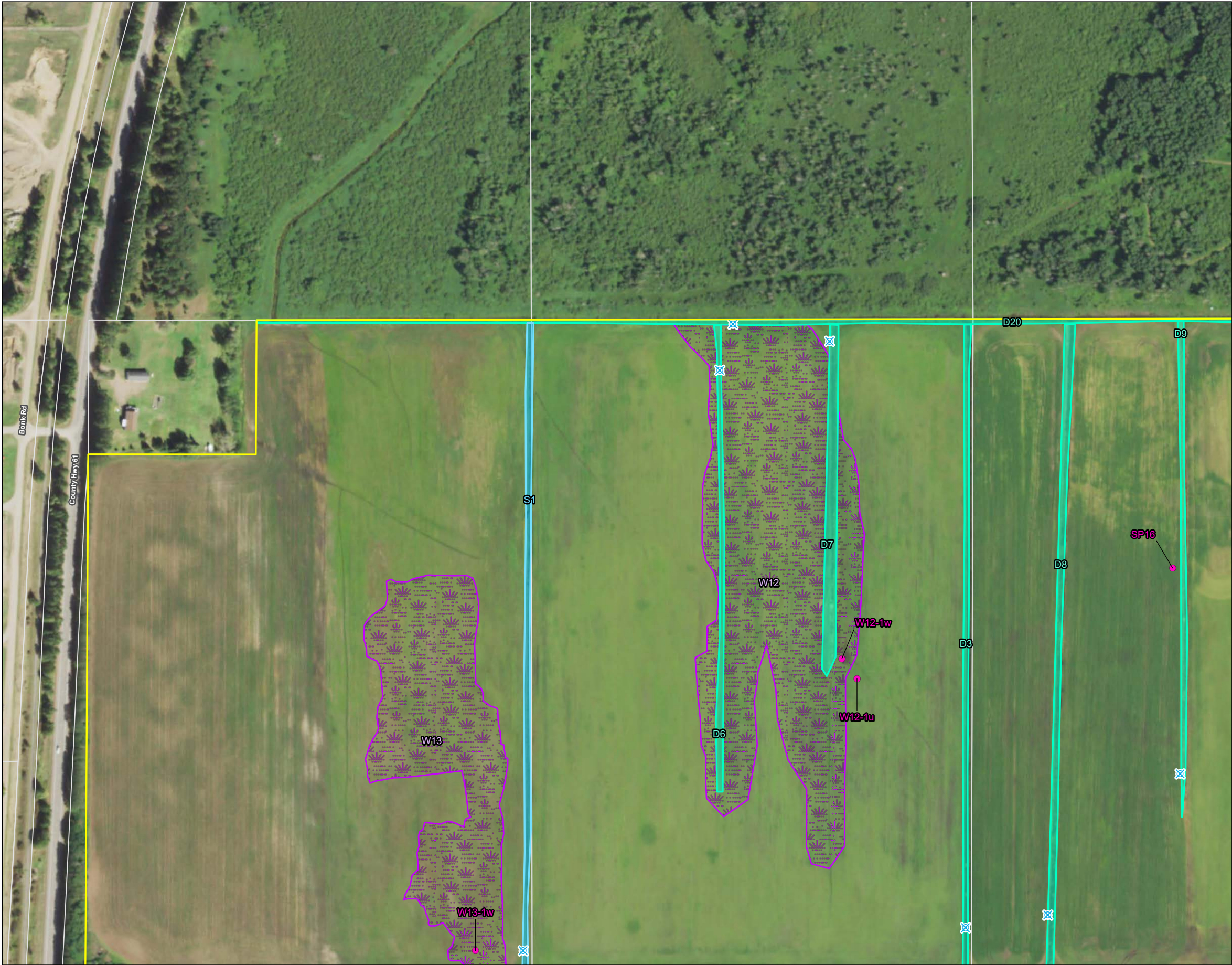


Figure No.

5

Title

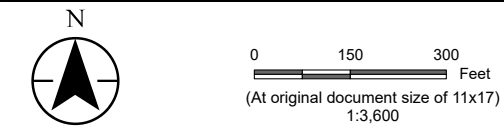
Field Collected Data

Client/Project
Swift Current Energy
Iron Pine Solar
Wetland Delineation

193708962

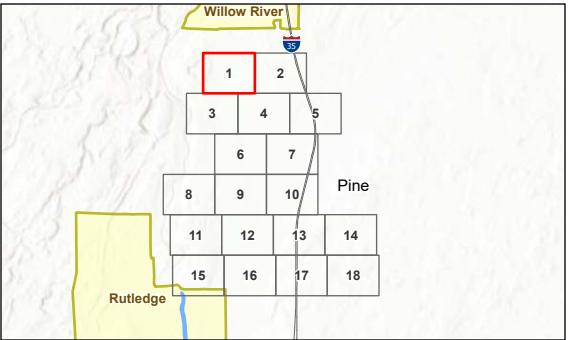
Project Location
Pine County, Minnesota

Prepared by JM on 2022-09-22
TR by DG on 2022-09-28
IR by JF on 2022-11-30



Legend

- Project Boundary
- Landowner Restricted Area
- Phase I Avoidance Area
- Parcel Boundary
- Sample Point
- Invasive Species Point
- Culvert
- Mapped Waterway Observation Point
- Field Delineated Channelized Ditch Line
- Field Delineated Channelized Ditch Area
- Field Delineated Waterway Line
- Field Delineated Waterway Area
- Field Delineated Open Water
- Field Delineated Wetland (Community Type)
 - Farmed Wetland
 - Floodplain Forest
 - Hardwood Swamp
 - Sedge Meadow
 - Shrub-Carr
 - Wet Meadow



Notes

- Coordinate System: NAD 1983 UTM Zone 15N
- Data Sources: Stantec, USGS, NADS, Pine County
- Background: 2019 NAIP



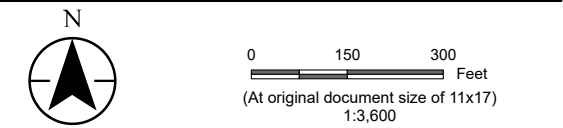
V:\1937\Active\193708962\03_data\gis\mxd\193708962_Pine_MN_Solar\save2.aprx Revised: 2022-11-30 By: jmarly



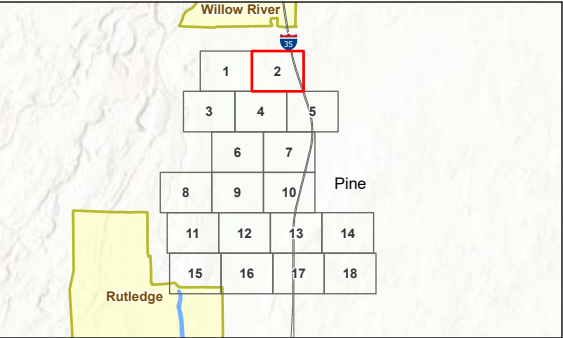
Figure No.
5
Title
Field Collected Data

Client/Project
Swift Current Energy
Iron Pine Solar
Wetland Delineation
193708962

Project Location
Pine County, Minnesota
Prepared by JM on 2022-09-22
TR by DG on 2022-09-28
IR by JF on 2022-11-30



- Legend
- Project Boundary
 - Landowner Restricted Area
 - Phase I Avoidance Area
 - Parcel Boundary
 - Sample Point
 - Invasive Species Point
 - Culvert
 - Mapped Waterway Observation Point
 - Field Delineated Channelized Ditch Line
 - Field Delineated Channelized Ditch Area
 - Field Delineated Waterway Line
 - Field Delineated Waterway Area
 - Field Delineated Open Water
 - Field Delineated Wetland (Community Type)
 - Farmed Wetland
 - Floodplain Forest
 - Hardwood Swamp
 - Sedge Meadow
 - Shrub-Carr
 - Wet Meadow



Notes
1. Coordinate System: NAD 1983 UTM Zone 15N
2. Data Sources: Stantec, USGS, NADS, Pine County
3. Background: 2019 NAIP



V:\1937\Active\193708962\03_data\gis_cad\gis\mxd\193708962_Pine_MN_Solar_save2.aprx Revised: 2022-11-30 By: jmarly

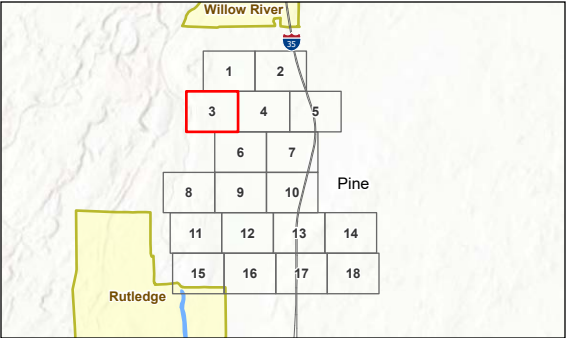


Figure No. **5**
Title **Field Collected Data**

Client/Project **Swift Current Energy
Iron Pine Solar
Wetland Delineation** 193708962
Project Location **Pine County, Minnesota** Prepared by JM on 2022-09-22
TR by DG on 2022-09-28
IR by JF on 2022-11-30



- Legend
- Project Boundary
 - Landowner Restricted Area
 - Phase I Avoidance Area
 - Parcel Boundary
 - Sample Point
 - Invasive Species Point
 - Culvert
 - Mapped Waterway Observation Point
 - Field Delineated Channelized Ditch Line
 - Field Delineated Channelized Ditch Area
 - Field Delineated Waterway Line
 - Field Delineated Waterway Area
 - Field Delineated Open Water
 - Field Delineated Wetland (Community Type)
 - Farmed Wetland
 - Floodplain Forest
 - Hardwood Swamp
 - Sedge Meadow
 - Shrub-Carr
 - Wet Meadow



Notes
1. Coordinate System: NAD 1983 UTM Zone 15N
2. Data Sources: Stantec, USGS, NADS, Pine County
3. Background: 2019 NAIP



V:\1937\Active\193708962\03_data\gis_cad\gis\mxd\193708962_Pine_MN_Solar_save2.aprx Revised: 2022-11-30 By: jmarly

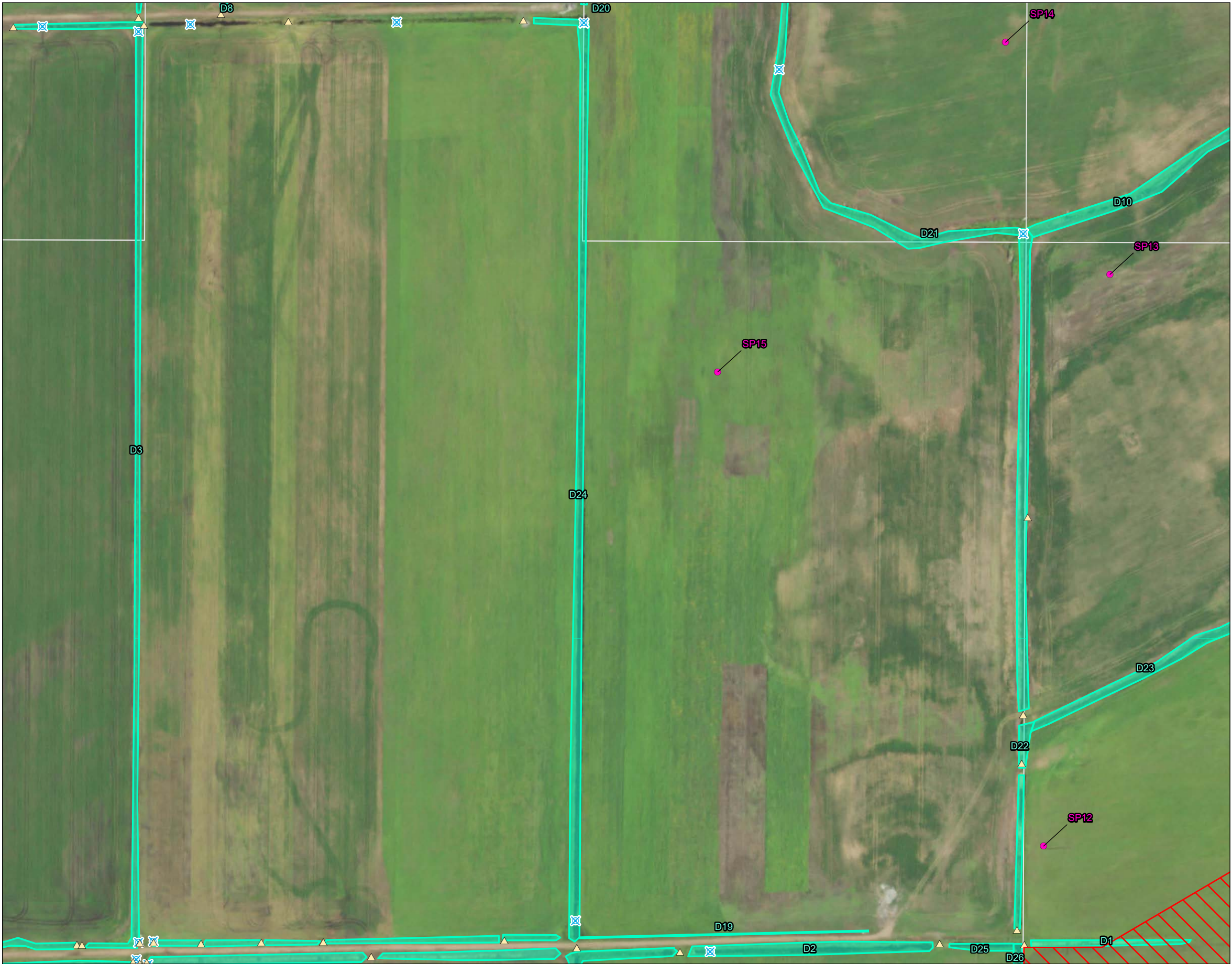
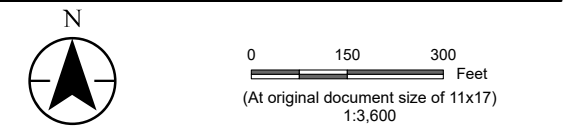
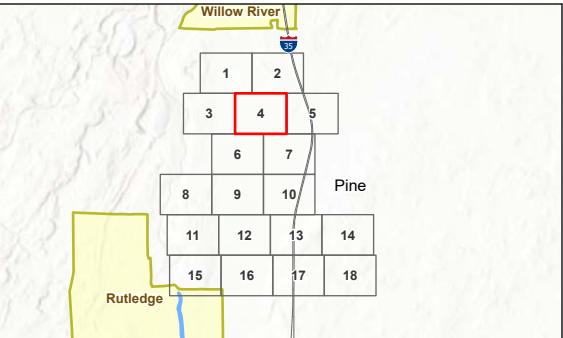


Figure No. 5
Title Field Collected Data

Client/Project Swift Current Energy
Iron Pine Solar
Wetland Delineation
Project Location Pine County, Minnesota
Prepared by JM on 2022-09-22
TR by DG on 2022-09-28
IR by JF on 2022-11-30
193708962



- Legend
- Project Boundary
 - Landowner Restricted Area
 - Phase I Avoidance Area
 - Parcel Boundary
 - Sample Point
 - Invasive Species Point
 - Culvert
 - Mapped Waterway Observation Point
 - Field Delineated Channelized Ditch Line
 - Field Delineated Channelized Ditch Area
 - Field Delineated Waterway Line
 - Field Delineated Waterway Area
 - Field Delineated Open Water
 - Field Delineated Wetland (Community Type)
 - Farmed Wetland
 - Floodplain Forest
 - Hardwood Swamp
 - Sedge Meadow
 - Shrub-Carr
 - Wet Meadow



Notes
1. Coordinate System: NAD 1983 UTM Zone 15N
2. Data Sources: Stantec, USGS, NADS, Pine County
3. Background: 2019 NAIP



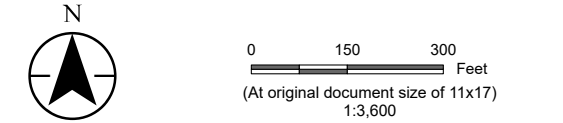
V:\1937\Active\193708962\03_data\gis_cad\gis\mxd\193708962_Pine_MN_Solar_save2.aprx Revised: 2022-11-30 By: jmarly



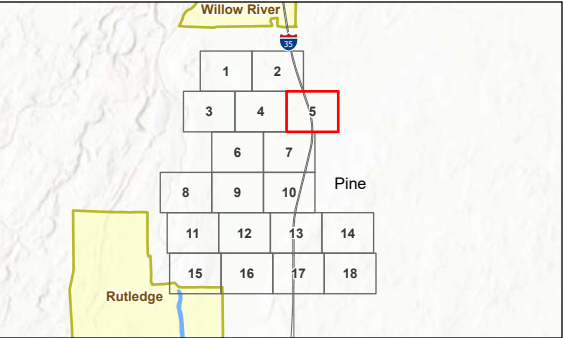
Figure No.
5
Title
Field Collected Data

Client/Project
Swift Current Energy
Iron Pine Solar
Wetland Delineation
193708962

Project Location
Pine County, Minnesota
Prepared by JM on 2022-09-22
TR by DG on 2022-09-28
IR by JF on 2022-11-30



- Legend
- Project Boundary
 - Landowner Restricted Area
 - Phase I Avoidance Area
 - Parcel Boundary
 - Sample Point
 - Invasive Species Point
 - Culvert
 - Mapped Waterway Observation Point
 - Field Delineated Channelized Ditch Line
 - Field Delineated Channelized Ditch Area
 - Field Delineated Waterway Line
 - Field Delineated Waterway Area
 - Field Delineated Open Water
 - Field Delineated Wetland (Community Type)
 - Farmed Wetland
 - Floodplain Forest
 - Hardwood Swamp
 - Sedge Meadow
 - Shrub-Carr
 - Wet Meadow



Notes
1. Coordinate System: NAD 1983 UTM Zone 15N
2. Data Sources: Stantec, USGS, NADS, Pine County
3. Background: 2019 NAIP



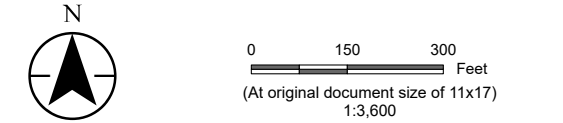
V:\1937\Active\193708962\03_data\gis\mxd\193708962_Pine_MN_Solar\save2.aprx Revised: 2022-11-30 By: jmarly



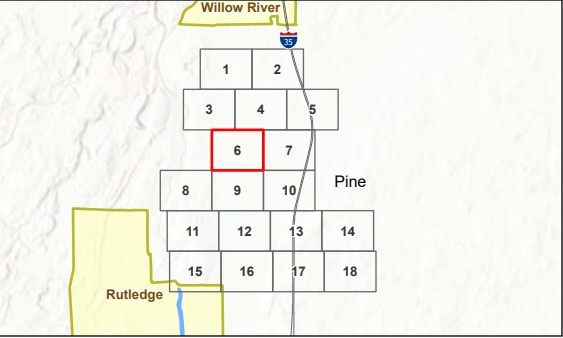
Figure No.
5
Title
Field Collected Data

Client/Project
Swift Current Energy
Iron Pine Solar
Wetland Delineation
193708962

Project Location
Pine County, Minnesota
Prepared by JM on 2022-09-22
TR by DG on 2022-09-28
IR by JF on 2022-11-30



- Legend
- Project Boundary
 - Landowner Restricted Area
 - Phase I Avoidance Area
 - Parcel Boundary
 - Sample Point
 - Invasive Species Point
 - Culvert
 - Mapped Waterway Observation Point
 - Field Delineated Channelized Ditch Line
 - Field Delineated Channelized Ditch Area
 - Field Delineated Waterway Line
 - Field Delineated Waterway Area
 - Field Delineated Open Water
 - Field Delineated Wetland (Community Type)
 - Farmed Wetland
 - Floodplain Forest
 - Hardwood Swamp
 - Sedge Meadow
 - Shrub-Carr
 - Wet Meadow



Notes
1. Coordinate System: NAD 1983 UTM Zone 15N
2. Data Sources: Stantec, USGS, NADS, Pine County
3. Background: 2019 NAIP



V:\1937\Active\193708962\03_data\gis_cad\gis\mxd\193708962_Pine_MN_Solar_save2.aprx Revised: 2022-11-30 By: jmarly



Figure No.
5

Title
Field Collected Data

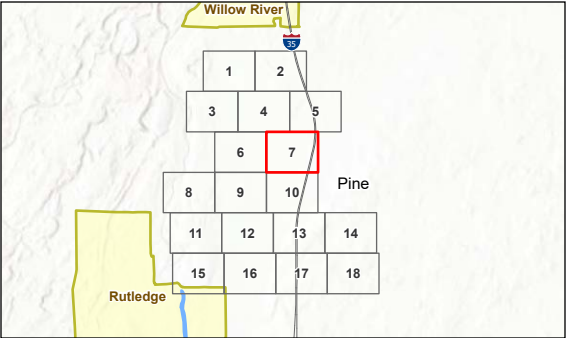
Client/Project
Swift Current Energy
Iron Pine Solar
Wetland Delineation
193708962

Project Location
Pine County, Minnesota

Prepared by JM on 2022-09-22
TR by DG on 2022-09-28
IR by JF on 2022-11-30



- Legend
- Project Boundary
 - Landowner Restricted Area
 - Phase I Avoidance Area
 - Parcel Boundary
 - Sample Point
 - Invasive Species Point
 - Culvert
 - Mapped Waterway Observation Point
 - Field Delineated Channelized Ditch Line
 - Field Delineated Channelized Ditch Area
 - Field Delineated Waterway Line
 - Field Delineated Waterway Area
 - Field Delineated Open Water
 - Field Delineated Wetland (Community Type)
 - Farmed Wetland
 - Floodplain Forest
 - Hardwood Swamp
 - Sedge Meadow
 - Shrub-Carr
 - Wet Meadow



Notes

- Coordinate System: NAD 1983 UTM Zone 15N
- Data Sources: Stantec, USGS, NADS, Pine County
- Background: 2019 NAIP



V:\1937\Active\193708962\03_data\gis\mxd\193708962_Pine_MN_Solar_save2.aprx Revised: 2022-11-30 By: jmarly

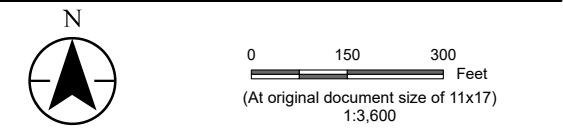


Figure No.
5

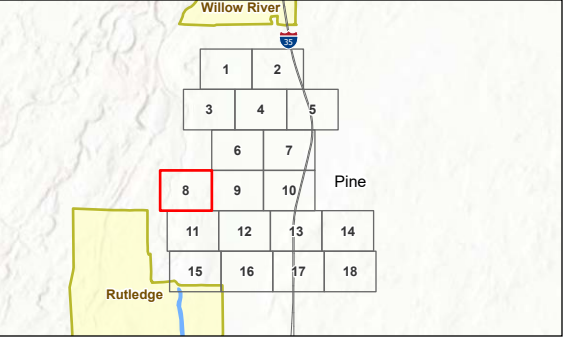
Title
Field Collected Data

Client/Project
Swift Current Energy
Iron Pine Solar
Wetland Delineation
193708962

Project Location
Pine County, Minnesota
Prepared by JM on 2022-09-22
TR by DG on 2022-09-28
IR by JF on 2022-11-30



- Legend
- Project Boundary
 - Landowner Restricted Area
 - Phase I Avoidance Area
 - Parcel Boundary
 - Sample Point
 - Invasive Species Point
 - Culvert
 - Mapped Waterway Observation Point
 - Field Delineated Channelized Ditch Line
 - Field Delineated Channelized Ditch Area
 - Field Delineated Waterway Line
 - Field Delineated Waterway Area
 - Field Delineated Open Water
 - Field Delineated Wetland (Community Type)
 - Farmed Wetland
 - Floodplain Forest
 - Hardwood Swamp
 - Sedge Meadow
 - Shrub-Carr
 - Wet Meadow



Notes

- Coordinate System: NAD 1983 UTM Zone 15N
- Data Sources: Stantec, USGS, NADS, Pine County
- Background: 2019 NAIP



V:\1937\Active\193708962\03_data\gis_cad\gis\mxd\193708962_Pine_MN_Solar_save2.aprx Revised: 2022-11-30 By: jmarly

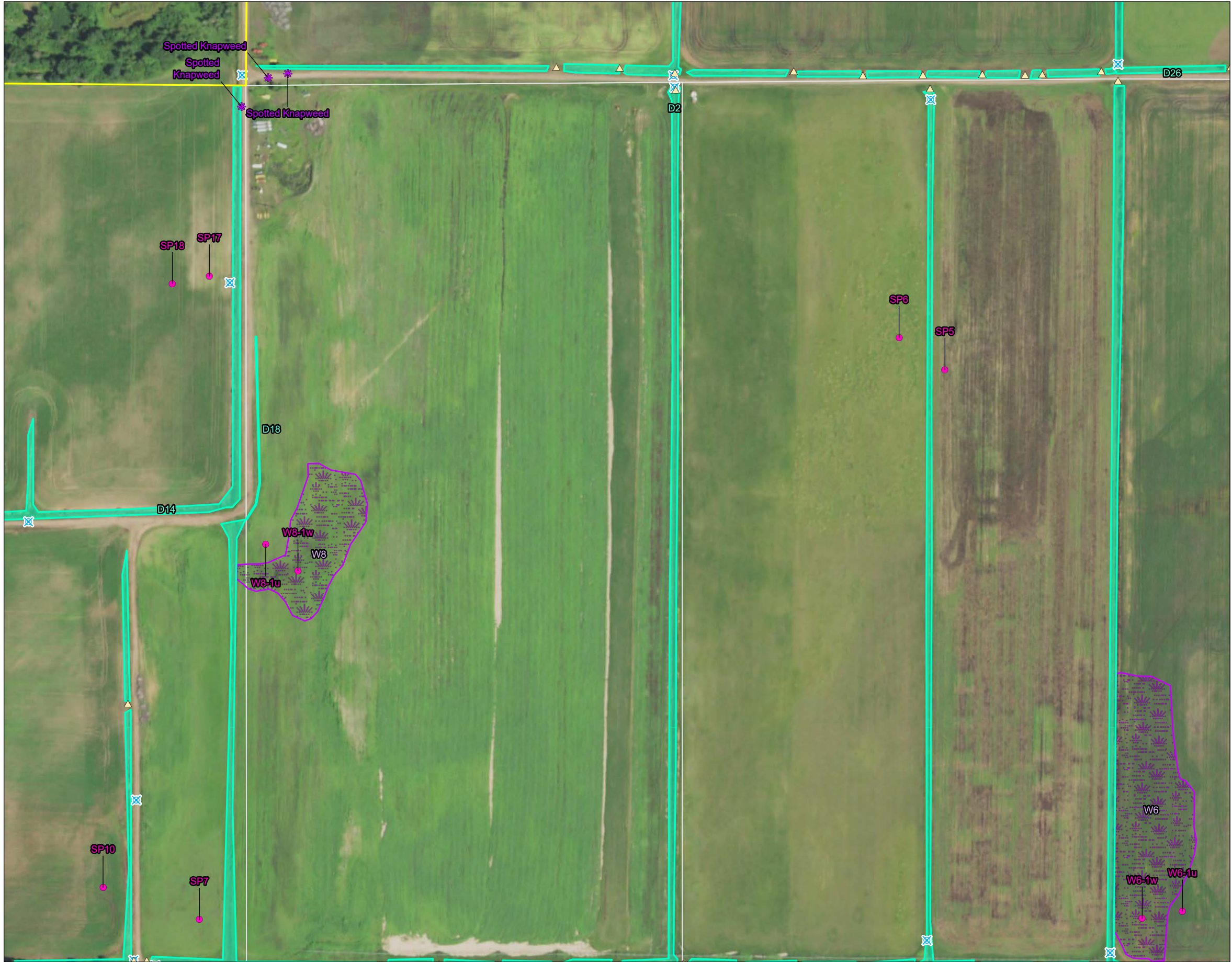
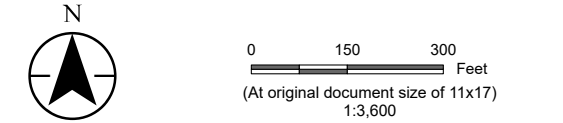


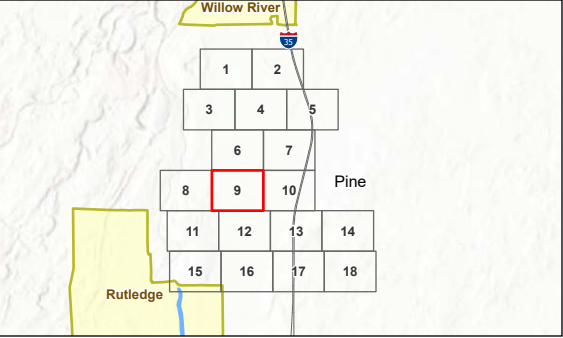
Figure No.
5
Title
Field Collected Data

Client/Project
Swift Current Energy
Iron Pine Solar
Wetland Delineation
193708962

Project Location
Pine County, Minnesota
Prepared by JM on 2022-09-22
TR by DG on 2022-09-28
IR by JF on 2022-11-30



- Legend
- Project Boundary
 - Landowner Restricted Area
 - Phase I Avoidance Area
 - Parcel Boundary
 - Sample Point
 - Invasive Species Point
 - Culvert
 - Mapped Waterway Observation Point
 - Field Delineated Channelized Ditch Line
 - Field Delineated Channelized Ditch Area
 - Field Delineated Waterway Line
 - Field Delineated Waterway Area
 - Field Delineated Open Water
 - Field Delineated Wetland (Community Type)
 - Farmed Wetland
 - Floodplain Forest
 - Hardwood Swamp
 - Sedge Meadow
 - Shrub-Carr
 - Wet Meadow



Notes
1. Coordinate System: NAD 1983 UTM Zone 15N
2. Data Sources: Stantec, USGS, NADS, Pine County
3. Background: 2019 NAIP



V:\1937\Active\193708962\03_data\gis_cad\gis\mxd\193708962_Pine_MN_Solar_save2.aprx Revised: 2022-11-30 By: jmarly



Figure No.

5

Title

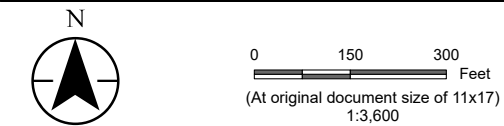
Field Collected Data

Client/Project
Swift Current Energy
Iron Pine Solar
Wetland Delineation

193708962

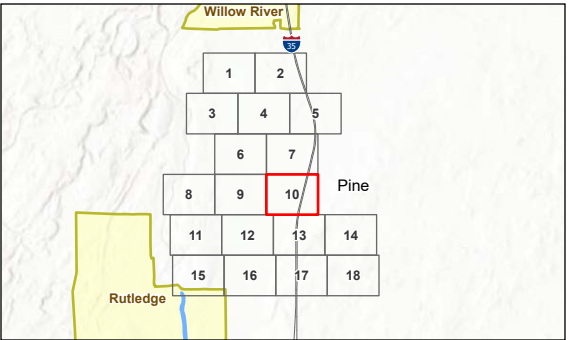
Project Location
Pine County, Minnesota

Prepared by JM on 2022-09-22
TR by DG on 2022-09-28
IR by JF on 2022-11-30



Legend

- Project Boundary
- Landowner Restricted Area
- Phase I Avoidance Area
- Parcel Boundary
- Sample Point
- Invasive Species Point
- Culvert
- Mapped Waterway Observation Point
- Field Delineated Channelized Ditch Line
- Field Delineated Channelized Ditch Area
- Field Delineated Waterway Line
- Field Delineated Waterway Area
- Field Delineated Open Water
- Field Delineated Wetland (Community Type)
 - Farmed Wetland
 - Floodplain Forest
 - Hardwood Swamp
 - Sedge Meadow
 - Shrub-Carr
 - Wet Meadow



Notes

- Coordinate System: NAD 1983 UTM Zone 15N
- Data Sources: Stantec, USGS, NADS, Pine County
- Background: 2019 NAIP



V:\1937\Active\193708962\03_data\gis_cad\gis\mxd\193708962_Pine MN Solar\save2.aprx Revised: 2022-11-30 By: jmarly



Figure No.
5

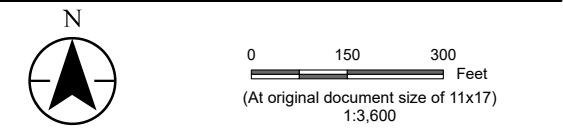
Title
Field Collected Data

Client/Project
Swift Current Energy
Iron Pine Solar
Wetland Delineation

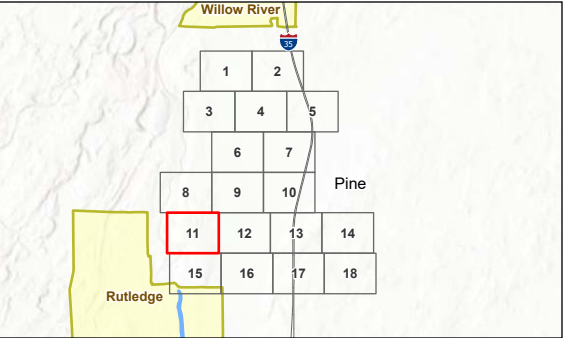
Project Location
Pine County, Minnesota

193708962

Prepared by JM on 2022-09-22
TR by DG on 2022-09-28
IR by JF on 2022-11-30



- Legend
- Project Boundary
 - Landowner Restricted Area
 - Phase I Avoidance Area
 - Parcel Boundary
 - Sample Point
 - Invasive Species Point
 - Culvert
 - Mapped Waterway Observation Point
 - Field Delineated Channelized Ditch Line
 - Field Delineated Channelized Ditch Area
 - Field Delineated Waterway Line
 - Field Delineated Waterway Area
 - Field Delineated Open Water
 - Field Delineated Wetland (Community Type)
 - Farmed Wetland
 - Floodplain Forest
 - Hardwood Swamp
 - Sedge Meadow
 - Shrub-Carr
 - Wet Meadow



Notes

- Coordinate System: NAD 1983 UTM Zone 15N
- Data Sources: Stantec, USGS, NADS, Pine County
- Background: 2019 NAIP



V:\1937\Active\193708962\03_data\gis\mxd\193708962_Pine MN Solar\save2.aprx Revised: 2022-11-30 By: jmarly

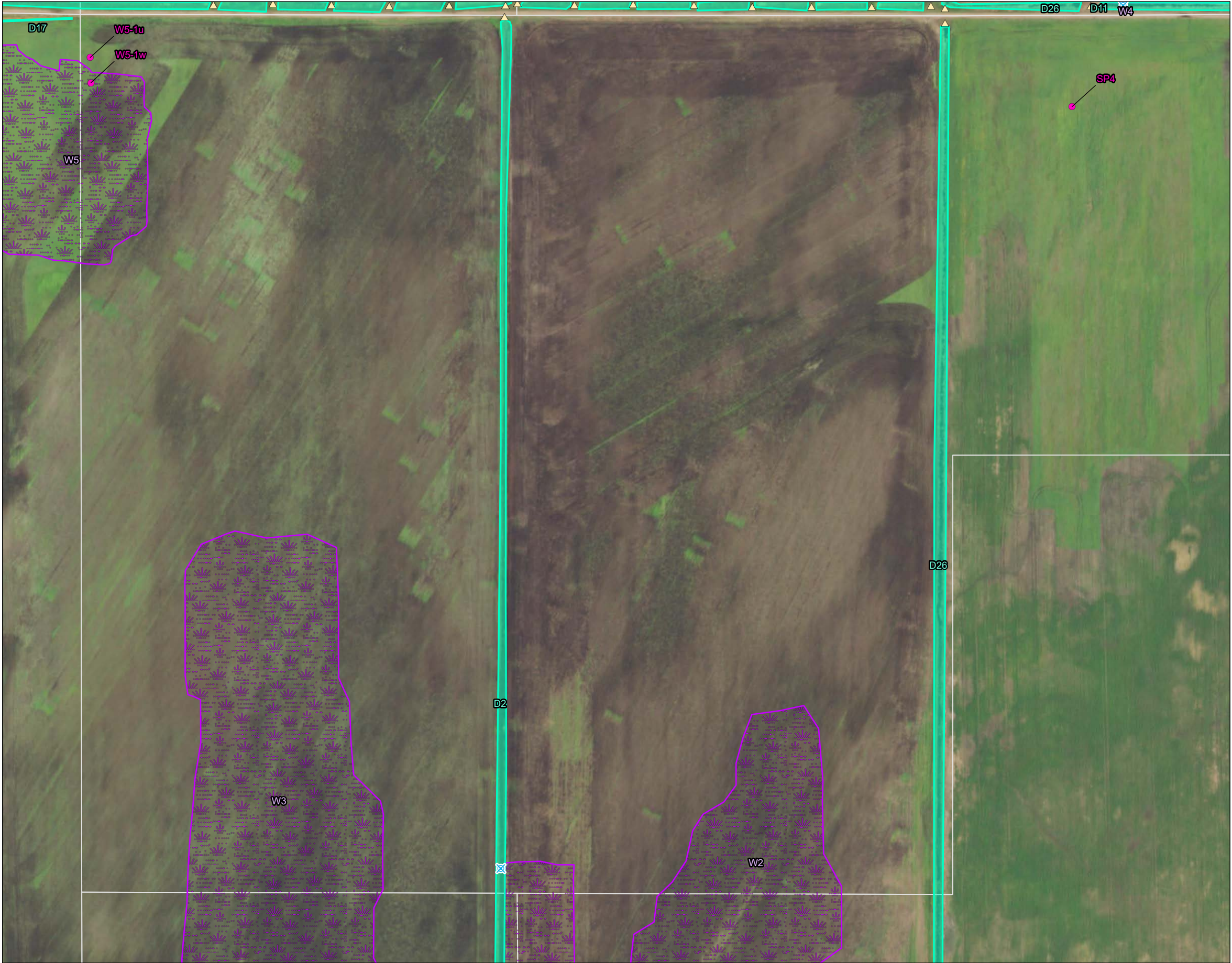
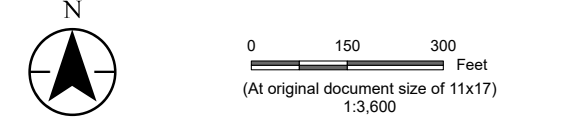
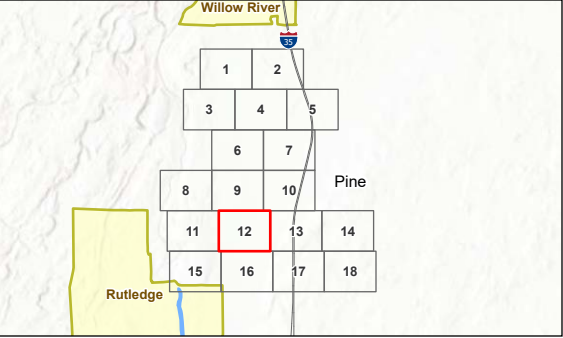


Figure No. 5
Title Field Collected Data

Client/Project Swift Current Energy
Iron Pine Solar
Wetland Delineation
Project Location Pine County, Minnesota
Prepared by JM on 2022-09-22
TR by DG on 2022-09-28
IR by JF on 2022-11-30



- Legend
- Project Boundary
 - Landowner Restricted Area
 - Phase I Avoidance Area
 - Parcel Boundary
 - Sample Point
 - Invasive Species Point
 - Culvert
 - Mapped Waterway Observation Point
 - Field Delineated Channelized Ditch Line
 - Field Delineated Channelized Ditch Area
 - Field Delineated Waterway Line
 - Field Delineated Waterway Area
 - Field Delineated Open Water
 - Field Delineated Wetland (Community Type)
 - Farmed Wetland
 - Floodplain Forest
 - Hardwood Swamp
 - Sedge Meadow
 - Shrub-Carr
 - Wet Meadow



Notes
1. Coordinate System: NAD 1983 UTM Zone 15N
2. Data Sources: Stantec, USGS, NADS, Pine County
3. Background: 2019 NAIP



V:\1937\Active\193708962\03_data\gis\mxd\193708962_Pine_MN_Solar_save2.aprx Revised: 2022-11-30 By: jmarly



Figure No.

5

Title

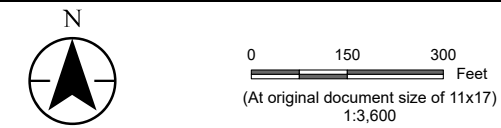
Field Collected Data

Client/Project
Swift Current Energy
Iron Pine Solar
Wetland Delineation

193708962

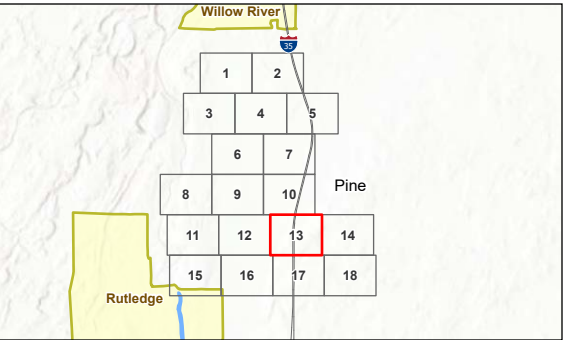
Project Location
Pine County, Minnesota

Prepared by JM on 2022-09-22
TR by DG on 2022-09-28
IR by JF on 2022-11-30



Legend

- Project Boundary
- Landowner Restricted Area
- Phase I Avoidance Area
- Parcel Boundary
- Sample Point
- Invasive Species Point
- Culvert
- Mapped Waterway Observation Point
- Field Delineated Channelized Ditch Line
- Field Delineated Channelized Ditch Area
- Field Delineated Waterway Line
- Field Delineated Waterway Area
- Field Delineated Open Water
- Field Delineated Wetland (Community Type)
 - Farmed Wetland
 - Floodplain Forest
 - Hardwood Swamp
 - Sedge Meadow
 - Shrub-Carr
 - Wet Meadow



Notes

- Coordinate System: NAD 1983 UTM Zone 15N
- Data Sources: Stantec, USGS, NADS, Pine County
- Background: 2019 NAIP



V:\1937\Active\193708962\03_data\gis\cad\gis\mxd\193708962_Pine_MN_Solar_save2.aprx Revised: 2022-11-30 By: jmarly



Figure No.

5

Title

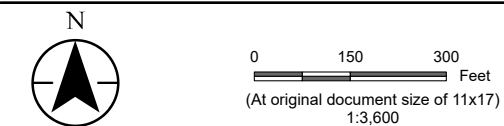
Field Collected Data

Client/Project
Swift Current Energy
Iron Pine Solar
Wetland Delineation

193708962

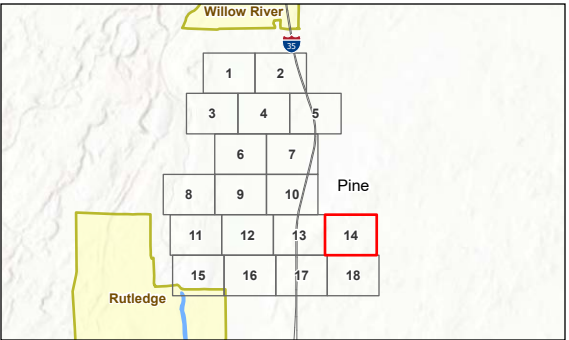
Project Location
Pine County, Minnesota

Prepared by JM on 2022-09-22
TR by DG on 2022-09-28
IR by JF on 2022-11-30



Legend

- Project Boundary
- Landowner Restricted Area
- Phase I Avoidance Area
- Parcel Boundary
- Sample Point
- Invasive Species Point
- Culvert
- Mapped Waterway Observation Point
- Field Delineated Channelized Ditch Line
- Field Delineated Channelized Ditch Area
- Field Delineated Waterway Line
- Field Delineated Waterway Area
- Field Delineated Open Water
- Field Delineated Wetland (Community Type)
 - Farmed Wetland
 - Floodplain Forest
 - Hardwood Swamp
 - Sedge Meadow
 - Shrub-Carr
 - Wet Meadow



Notes

- Coordinate System: NAD 1983 UTM Zone 15N
- Data Sources: Stantec, USGS, NADS, Pine County
- Background: 2019 NAIP



V:\1937\Active\193708962\03_data\gis_cad\gis\mxd\193708962_Pine_MN_Solar_save2.aprx Revised: 2022-11-30 By: jmarly

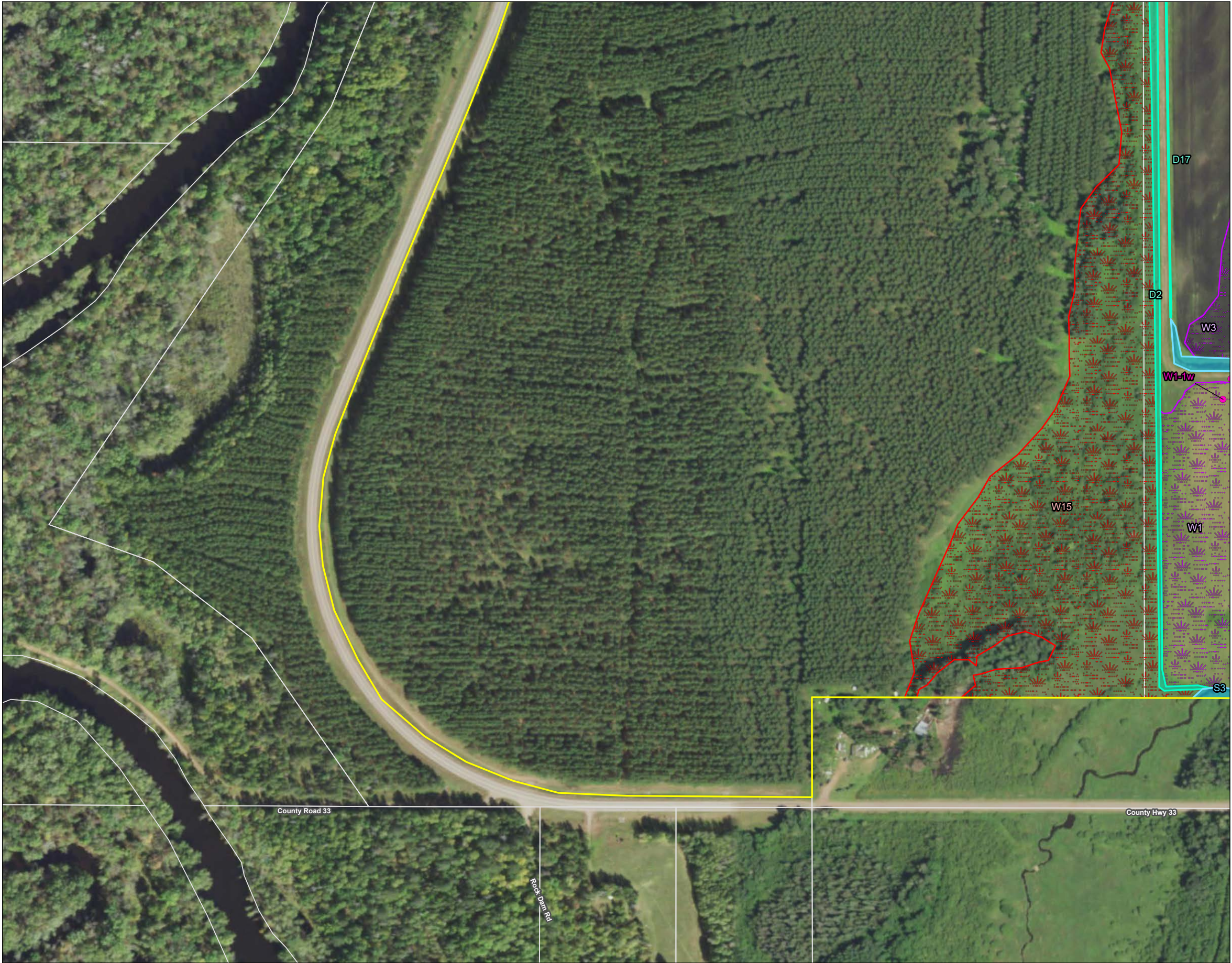
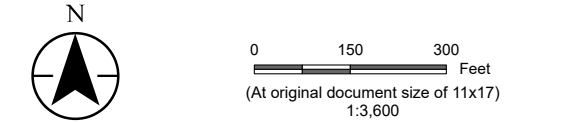


Figure No.
5
Title
Field Collected Data

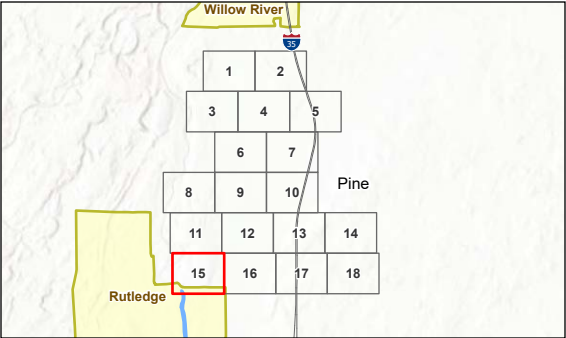
Client/Project
Swift Current Energy
Iron Pine Solar
Wetland Delineation
193708962

Project Location
Pine County, Minnesota

Prepared by JM on 2022-09-22
TR by DG on 2022-09-28
IR by JF on 2022-11-30



- Legend
- Project Boundary
 - Landowner Restricted Area
 - Phase I Avoidance Area
 - Parcel Boundary
 - Sample Point
 - Invasive Species Point
 - Culvert
 - Mapped Waterway Observation Point
 - Field Delineated Channelized Ditch Line
 - Field Delineated Channelized Ditch Area
 - Field Delineated Waterway Line
 - Field Delineated Waterway Area
 - Field Delineated Open Water
 - Field Delineated Wetland (Community Type)
 - Farmed Wetland
 - Floodplain Forest
 - Hardwood Swamp
 - Sedge Meadow
 - Shrub-Carr
 - Wet Meadow



Notes
1. Coordinate System: NAD 1983 UTM Zone 15N
2. Data Sources: Stantec, USGS, NADS, Pine County
3. Background: 2019 NAIP

