

|                               |                                 |                                    |
|-------------------------------|---------------------------------|------------------------------------|
| Proposed Pipeline - Sandpiper | Milepost - Sandpiper            | Tract Boundary                     |
| Existing Enbridge Pipelines   | Potential Block Valve           | Facility Boundary                  |
| Foreign Pipes                 | Environmental Survey Area (ESA) | Previously Sited Facility Boundary |
| Transmission Lines            |                                 | Section Lines                      |
| SPREAD BREAK                  |                                 |                                    |

500 250 0 500 1,000 Feet

| DRAWN | CHECKED | APPROVED | DATE     | REV NO. | DESCRIPTION                         |
|-------|---------|----------|----------|---------|-------------------------------------|
|       |         |          | 1/29/14  | 2       | PUC Update - Revision D-2 Alignment |
|       |         |          | 12/19/13 | 1       | PUC Update - Revision D Alignment   |
|       |         |          | 10/10/13 | 0       | PUC Submittal                       |

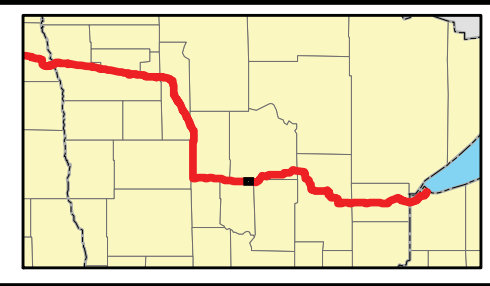
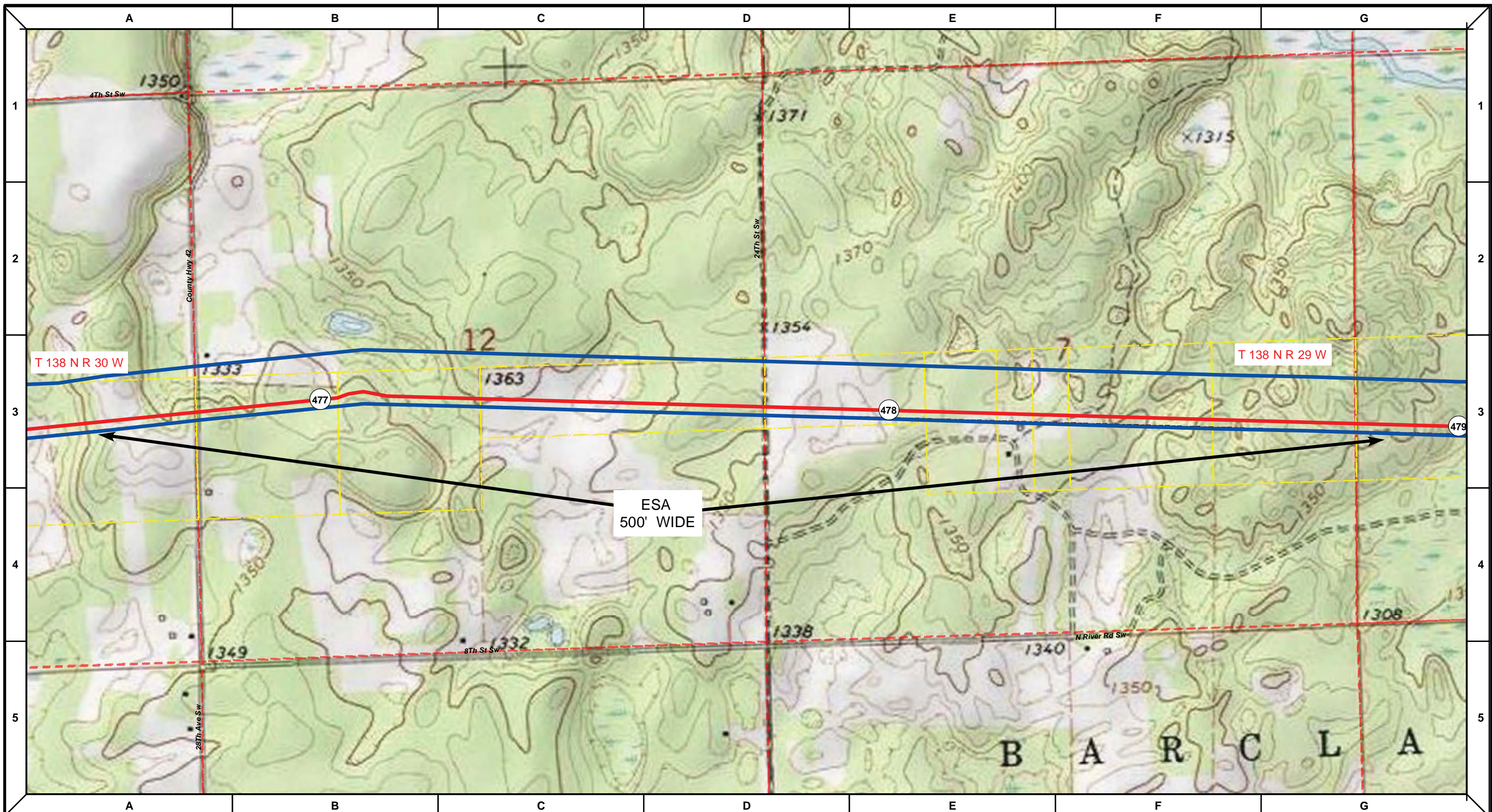
NORTH DAKOTA PIPELINE COMPANY LLC

**PROPOSED SANDPIPER PIPELINE PROJECT**  
 ROUTE MAP  
 Cass County, MN

|                    |                 |
|--------------------|-----------------|
| DRAWN: <b>MLB</b>  | CHECKED: --     |
| DATE: Jan 30, 2014 | SCALE: AS SHOWN |

Spread:7 Map: 75 of 123





|                               |                                 |                                    |
|-------------------------------|---------------------------------|------------------------------------|
| Proposed Pipeline - Sandpiper | Milepost - Sandpiper            | Tract Boundary                     |
| Existing Enbridge Pipelines   | Potential Block Valve           | Facility Boundary                  |
| Foreign Pipes                 | Environmental Survey Area (ESA) | Previously Sited Facility Boundary |
| Transmission Lines            |                                 | Section Lines                      |
| SPREAD BREAK                  |                                 |                                    |

500 250 0 500 1,000 Feet

| DRAWN | CHECKED | APPROVED | DATE     | REV NO. | DESCRIPTION                         |
|-------|---------|----------|----------|---------|-------------------------------------|
|       |         |          | 1/29/14  | 2       | PUC Update - Revision D-2 Alignment |
|       |         |          | 12/19/13 | 1       | PUC Update - Revision D Alignment   |
|       |         |          | 10/10/13 | 0       | PUC Submittal                       |

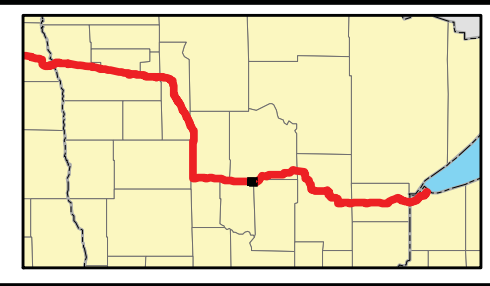
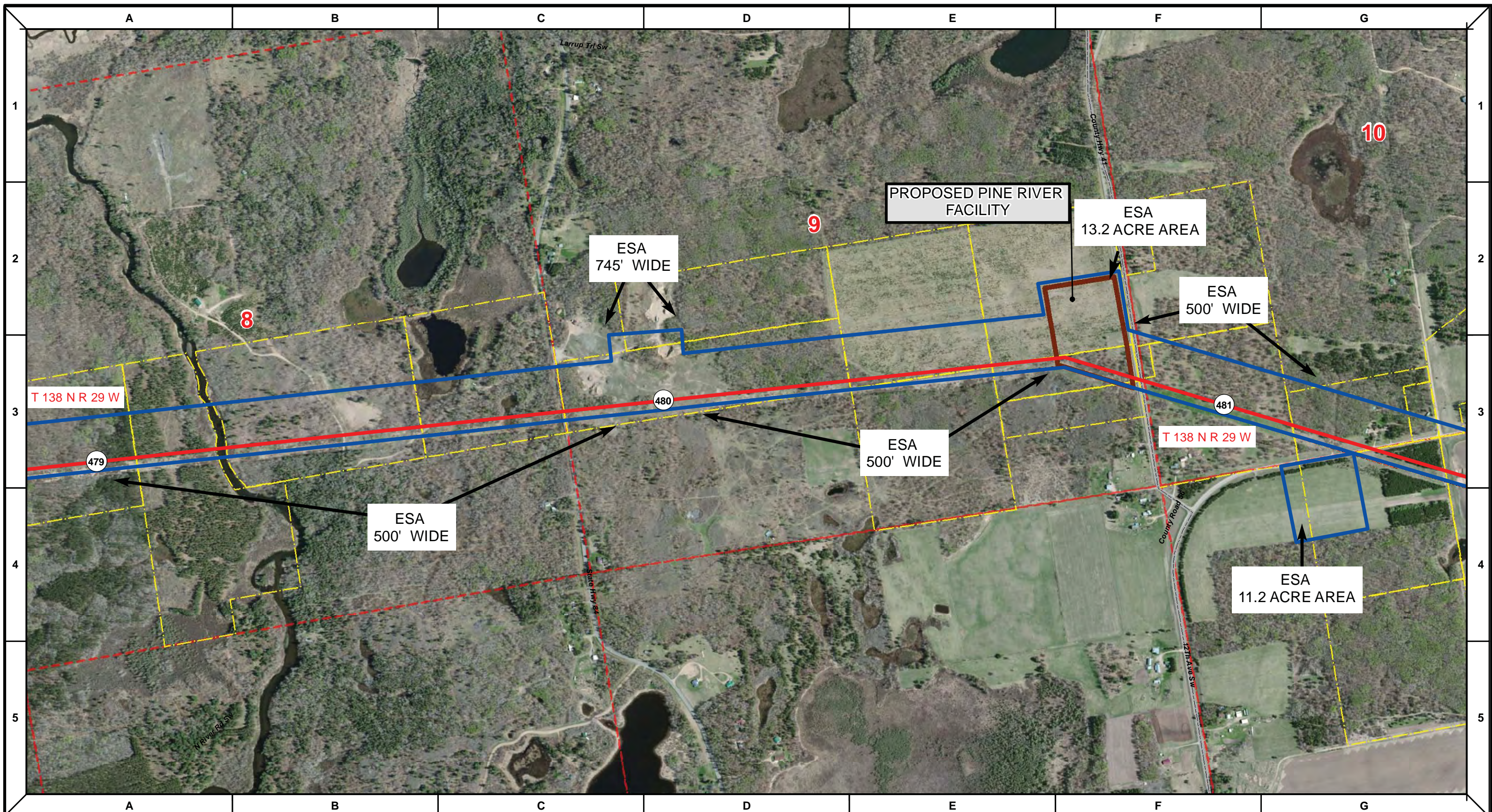
NORTH DAKOTA PIPELINE COMPANY LLC

**PROPOSED SANDPIPER  
 PIPELINE PROJECT  
 ROUTE MAP  
 Cass County, MN**

|                           |                        |
|---------------------------|------------------------|
| DRAWN: <b>MLB</b>         | CHECKED: <b>--</b>     |
| DATE: <b>Jan 30, 2014</b> | SCALE: <b>AS SHOWN</b> |

Spread:7 Map: 75 of 123





|                               |                                 |                                    |
|-------------------------------|---------------------------------|------------------------------------|
| Proposed Pipeline - Sandpiper | Milepost - Sandpiper            | Tract Boundary                     |
| Existing Enbridge Pipelines   | Potential Block Valve           | Facility Boundary                  |
| Foreign Pipes                 | Environmental Survey Area (ESA) | Previously Sited Facility Boundary |
| Transmission Lines            |                                 | Section Lines                      |
| SPREAD BREAK                  |                                 |                                    |

500 250 0 500 1,000 Feet

| DRAWN | CHECKED | APPROVED | DATE     | REV NO. | DESCRIPTION                         |
|-------|---------|----------|----------|---------|-------------------------------------|
|       |         |          | 1/29/14  | 2       | PUC Update - Revision D-2 Alignment |
|       |         |          | 12/19/13 | 1       | PUC Update - Revision D Alignment   |
|       |         |          | 10/10/13 | 0       | PUC Submittal                       |

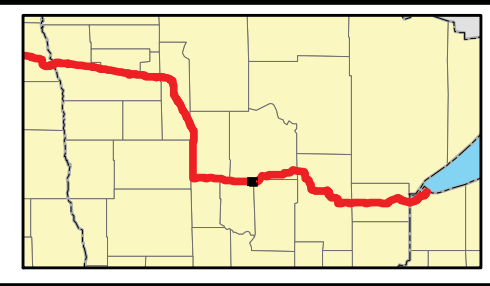
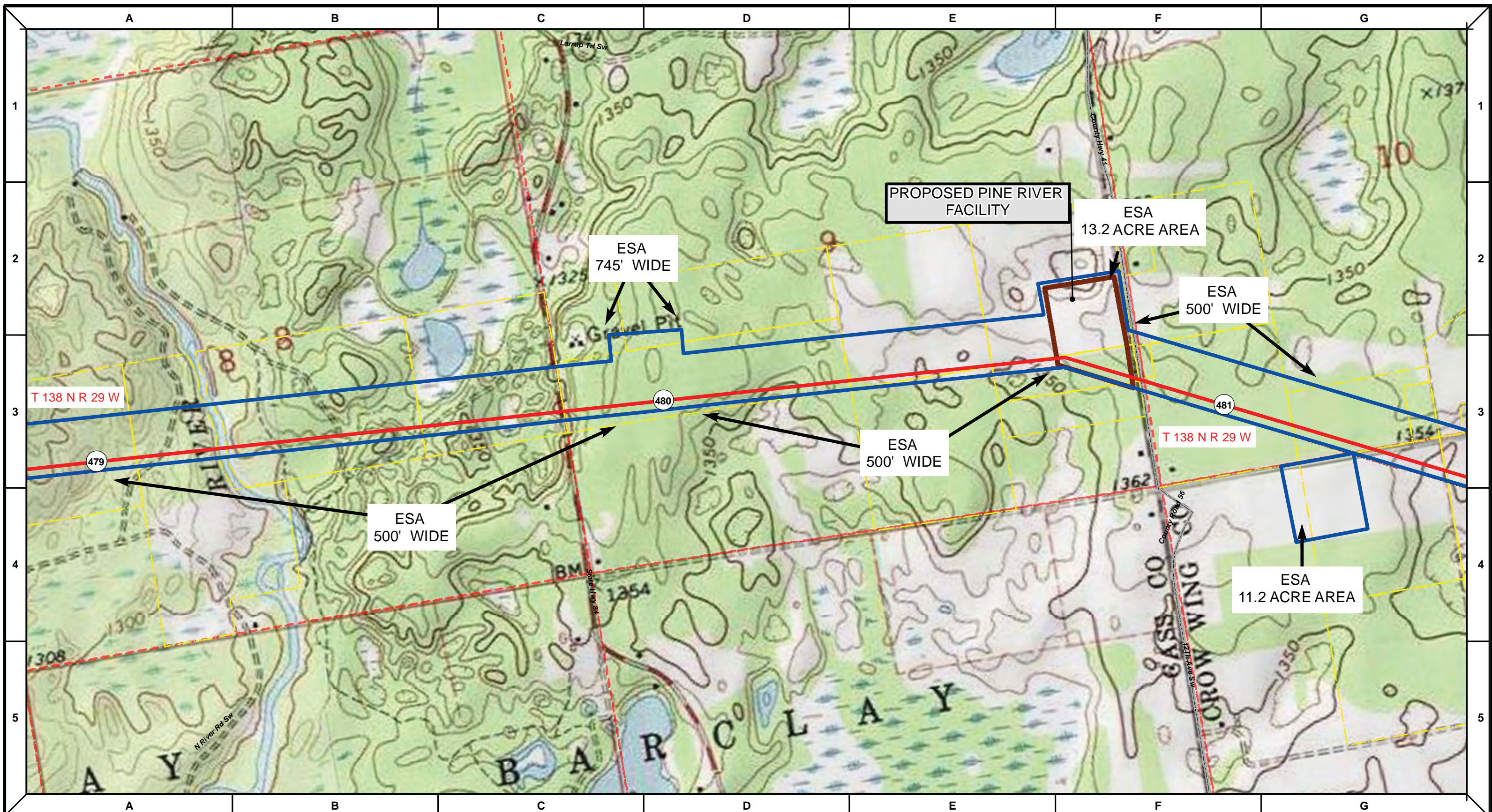
**ENBRIDGE**  
NORTH DAKOTA PIPELINE COMPANY LLC

**PROPOSED SANDPIPER PIPELINE PROJECT**  
ROUTE MAP  
Cass & Crow Wing County, MN

|                    |                 |
|--------------------|-----------------|
| DRAWN: MLB         | CHECKED: --     |
| DATE: Jan 30, 2014 | SCALE: AS SHOWN |

Spread:7 Map: 76 of 123





|                               |                                 |                                    |
|-------------------------------|---------------------------------|------------------------------------|
| Proposed Pipeline - Sandpiper | Milepost - Sandpiper            | Tract Boundary                     |
| Existing Enbridge Pipelines   | Potential Block Valve           | Facility Boundary                  |
| Foreign Pipes                 | Environmental Survey Area (ESA) | Previously Sited Facility Boundary |
| Transmission Lines            |                                 | Section Lines                      |
| SPREAD BREAK                  |                                 |                                    |

| DRAWN | CHECKED | APPROVED | DATE     | REV NO. | DESCRIPTION                         |
|-------|---------|----------|----------|---------|-------------------------------------|
|       |         |          | 1/29/14  | 2       | PUC Update - Revision D-2 Alignment |
|       |         |          | 12/19/13 | 1       | PUC Update - Revision D Alignment   |
|       |         |          | 10/10/13 | 0       | PUC Submittal                       |

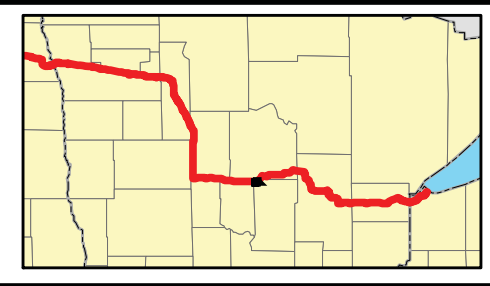
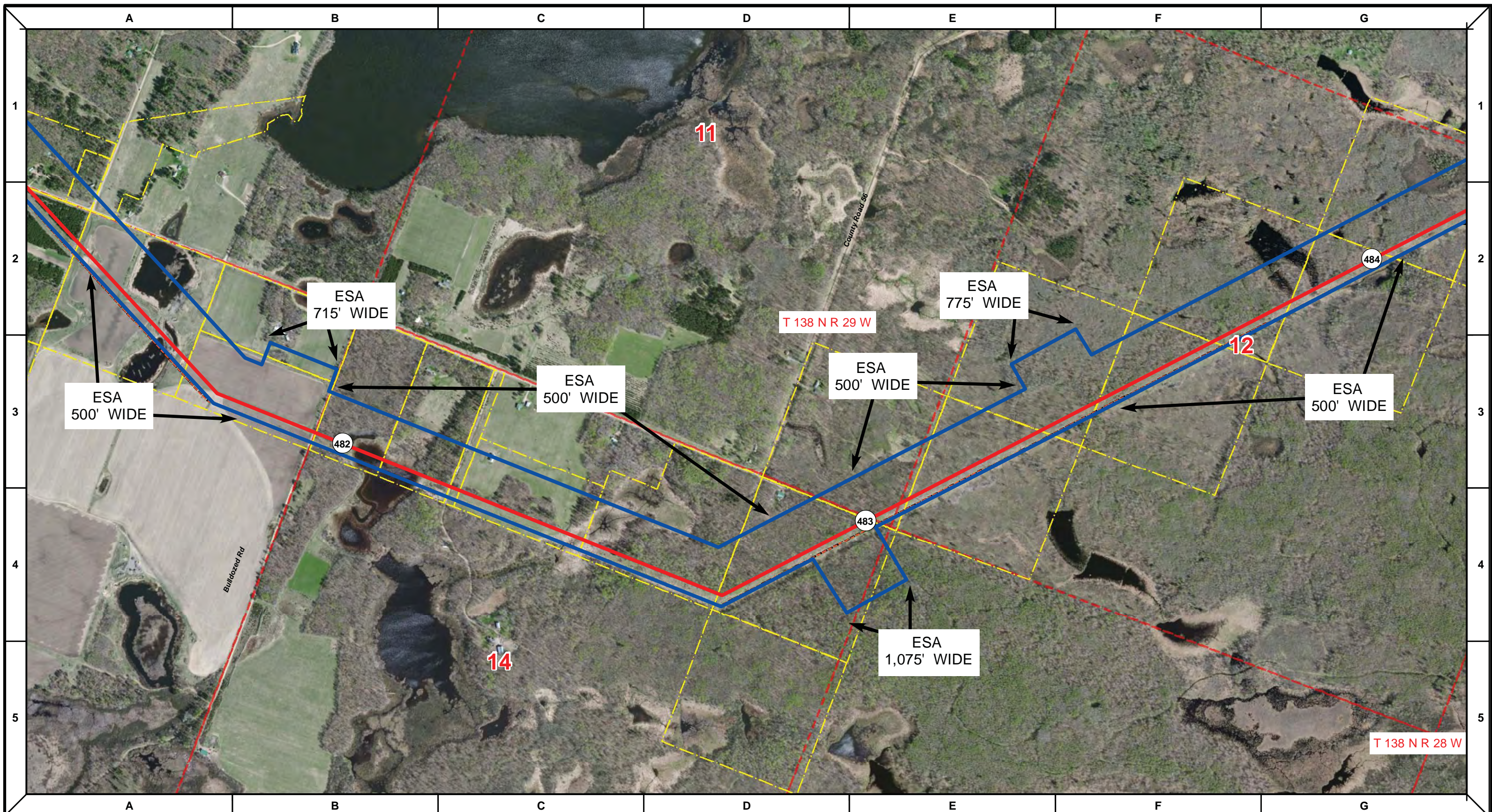
NORTH DAKOTA PIPELINE COMPANY LLC

**PROPOSED SANDPIPER PIPELINE PROJECT**  
**ROUTE MAP**  
 Cass & Crow Wing County, MN

|                           |                        |
|---------------------------|------------------------|
| DRAWN: <b>MLB</b>         | CHECKED: <b>--</b>     |
| DATE: <b>Jan 30, 2014</b> | SCALE: <b>AS SHOWN</b> |

Spread:7      Map: 76 of 123





|                               |                                 |                                    |
|-------------------------------|---------------------------------|------------------------------------|
| Proposed Pipeline - Sandpiper | Milepost - Sandpiper            | Tract Boundary                     |
| Existing Enbridge Pipelines   | Potential Block Valve           | Facility Boundary                  |
| Foreign Pipes                 | Environmental Survey Area (ESA) | Previously Sited Facility Boundary |
| Transmission Lines            |                                 | Section Lines                      |
| SPREAD BREAK                  |                                 |                                    |

500 250 0 500 1,000 Feet

| DRAWN | CHECKED | APPROVED | DATE     | REV NO. | DESCRIPTION                         |
|-------|---------|----------|----------|---------|-------------------------------------|
|       |         |          | 1/29/14  | 2       | PUC Update - Revision D-2 Alignment |
|       |         |          | 12/19/13 | 1       | PUC Update - Revision D Alignment   |
|       |         |          | 10/10/13 | 0       | PUC Submittal                       |

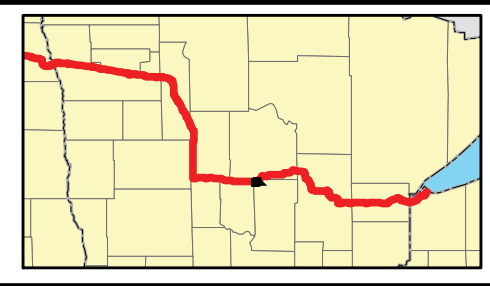
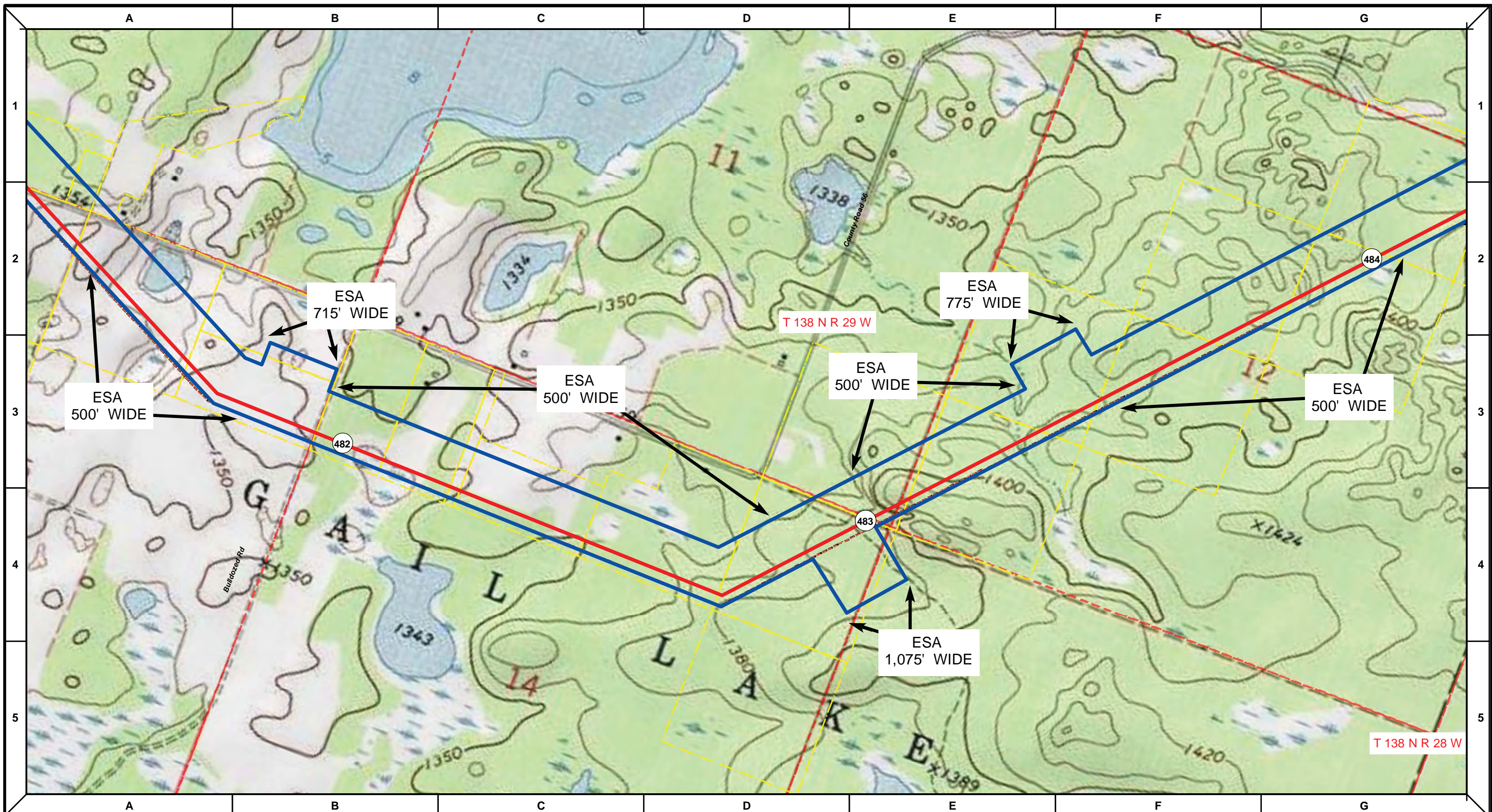
NORTH DAKOTA PIPELINE COMPANY LLC

**PROPOSED SANDPIPER PIPELINE PROJECT**  
 ROUTE MAP  
 Crow Wing County, MN

|                           |                        |
|---------------------------|------------------------|
| DRAWN: <b>MLB</b>         | CHECKED: <b>--</b>     |
| DATE: <b>Jan 30, 2014</b> | SCALE: <b>AS SHOWN</b> |

Spread:7 Map: 77 of 123





|                               |                                 |                                    |
|-------------------------------|---------------------------------|------------------------------------|
| Proposed Pipeline - Sandpiper | Milepost - Sandpiper            | Tract Boundary                     |
| Existing Enbridge Pipelines   | Potential Block Valve           | Facility Boundary                  |
| Foreign Pipes                 | Environmental Survey Area (ESA) | Previously Sited Facility Boundary |
| Transmission Lines            |                                 | Section Lines                      |
| SPREAD BREAK                  |                                 |                                    |

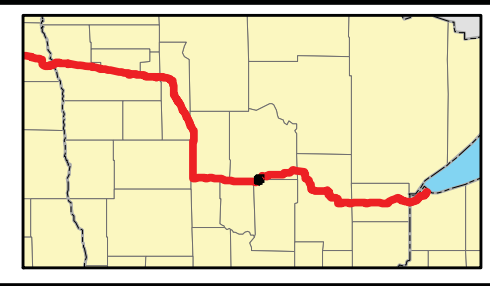
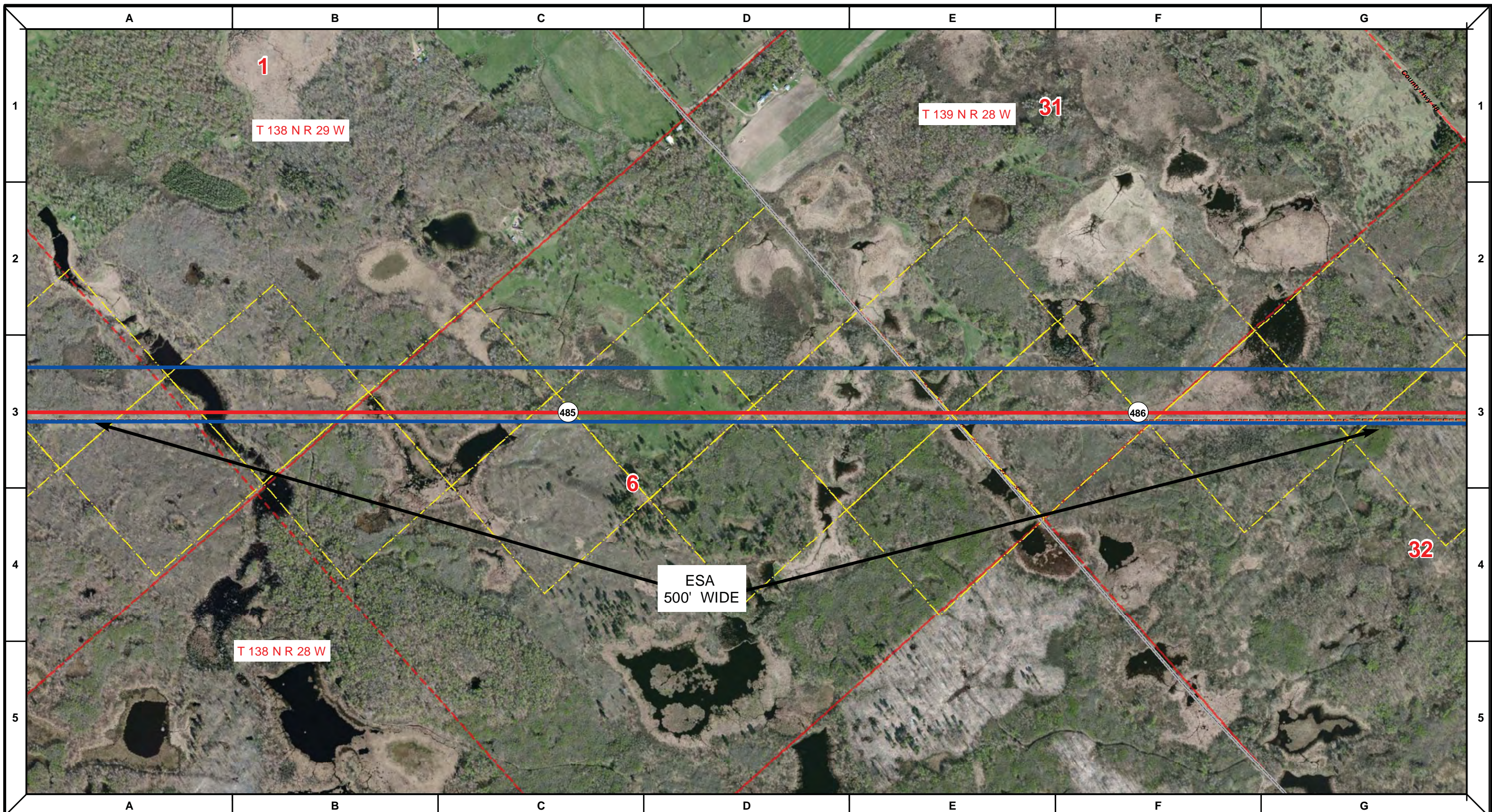
| DRAWN | CHECKED | APPROVED | DATE     | REV NO. | DESCRIPTION                         |
|-------|---------|----------|----------|---------|-------------------------------------|
|       |         |          | 1/29/14  | 2       | PUC Update - Revision D-2 Alignment |
|       |         |          | 12/19/13 | 1       | PUC Update - Revision D Alignment   |
|       |         |          | 10/10/13 | 0       | PUC Submittal                       |

NORTH DAKOTA PIPELINE COMPANY LLC  
**PROPOSED SANDPIPER PIPELINE PROJECT**  
 ROUTE MAP  
 Crow Wing County, MN

|                           |                        |
|---------------------------|------------------------|
| DRAWN: <b>MLB</b>         | CHECKED: <b>--</b>     |
| DATE: <b>Jan 30, 2014</b> | SCALE: <b>AS SHOWN</b> |

Spread:7 Map: 77 of 123





|                               |                                 |                                    |
|-------------------------------|---------------------------------|------------------------------------|
| Proposed Pipeline - Sandpiper | Milepost - Sandpiper            | Tract Boundary                     |
| Existing Enbridge Pipelines   | Potential Block Valve           | Facility Boundary                  |
| Foreign Pipes                 | Environmental Survey Area (ESA) | Previously Sited Facility Boundary |
| Transmission Lines            |                                 | Section Lines                      |
| SPREAD BREAK                  |                                 |                                    |

| DRAWN | CHECKED | APPROVED | DATE     | REV NO. | DESCRIPTION                         |
|-------|---------|----------|----------|---------|-------------------------------------|
|       |         |          | 1/29/14  | 2       | PUC Update - Revision D-2 Alignment |
|       |         |          | 12/19/13 | 1       | PUC Update - Revision D Alignment   |
|       |         |          | 10/10/13 | 0       | PUC Submittal                       |

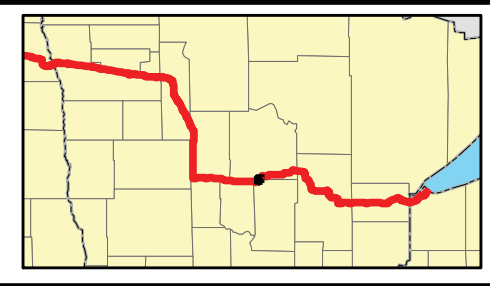
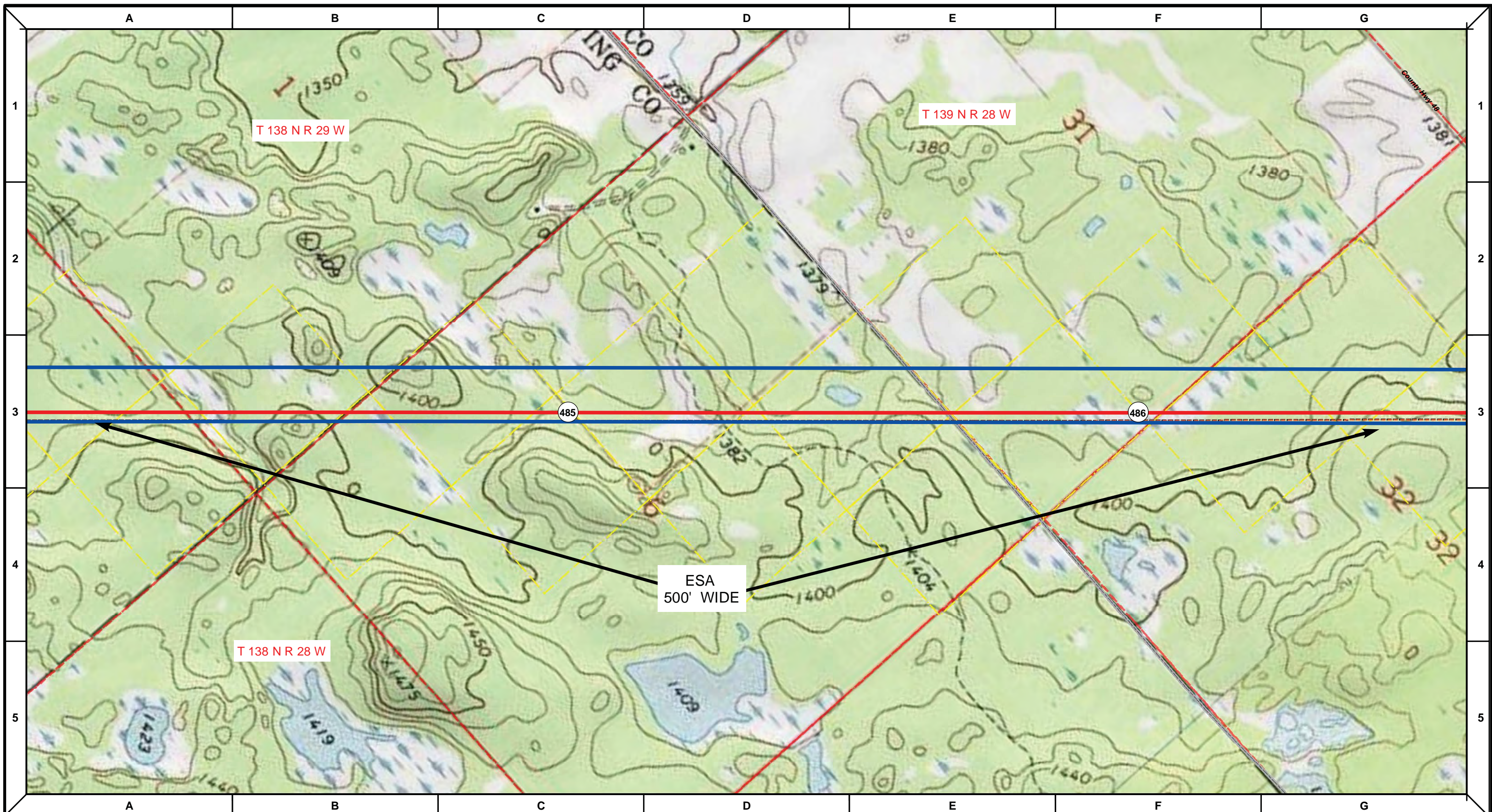
NORTH DAKOTA PIPELINE COMPANY LLC

**PROPOSED SANDPIPER PIPELINE PROJECT**  
 ROUTE MAP  
 Crow Wing & Cass County, MN

|                    |                 |
|--------------------|-----------------|
| DRAWN: <i>MLB</i>  | CHECKED: --     |
| DATE: Jan 30, 2014 | SCALE: AS SHOWN |

Spread: 7 Map: 78 of 123





- Proposed Pipeline - Sandpiper
- Existing Enbridge Pipelines
- Foreign Pipes
- - - Transmission Lines
- SPREAD BREAK
- 1 Milepost - Sandpiper
- ✕ Potential Block Valve
- Environmental Survey Area (ESA)
- Tract Boundary
- Facility Boundary
- Previously Sited Facility Boundary
- Section Lines



| DRAWN | CHECKED | APPROVED | DATE     | REV NO. | DESCRIPTION                         |
|-------|---------|----------|----------|---------|-------------------------------------|
|       |         |          | 1/29/14  | 2       | PUC Update - Revision D-2 Alignment |
|       |         |          | 12/19/13 | 1       | PUC Update - Revision D Alignment   |
|       |         |          | 10/10/13 | 0       | PUC Submittal                       |

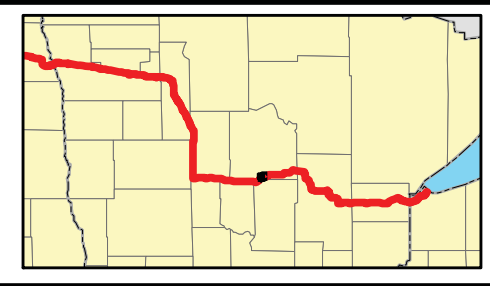
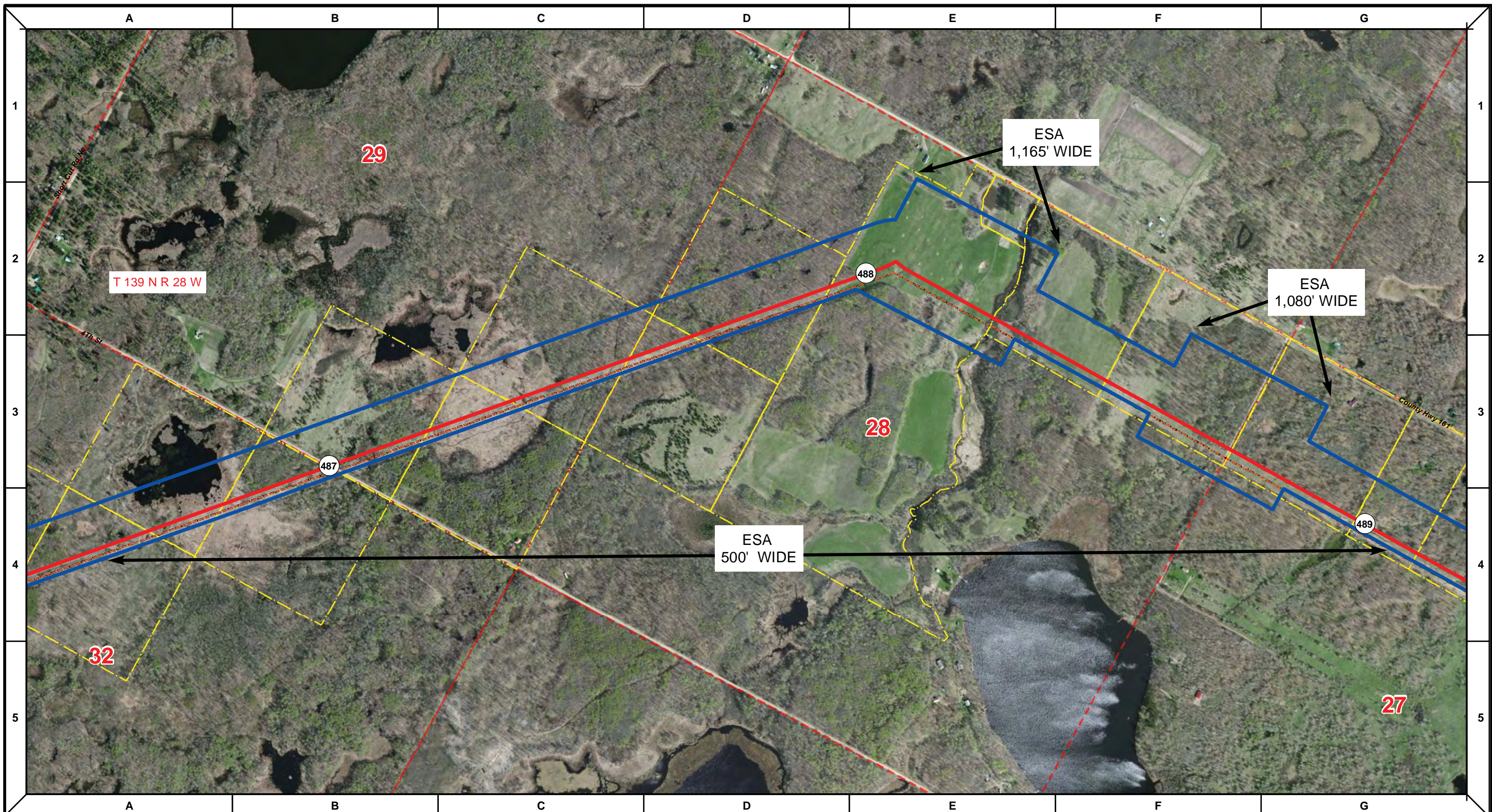
**ENBRIDGE**  
NORTH DAKOTA PIPELINE COMPANY LLC

**PROPOSED SANDPIPER  
PIPELINE PROJECT  
ROUTE MAP  
Crow Wing & Cass County, MN**

|                           |                        |
|---------------------------|------------------------|
| DRAWN: <b>MLB</b>         | CHECKED: <b>--</b>     |
| DATE: <b>Jan 30, 2014</b> | SCALE: <b>AS SHOWN</b> |

Spread:7 Map: 78 of 123





|                               |                                 |                                    |
|-------------------------------|---------------------------------|------------------------------------|
| Proposed Pipeline - Sandpiper | Milepost - Sandpiper            | Tract Boundary                     |
| Existing Enbridge Pipelines   | Potential Block Valve           | Facility Boundary                  |
| Foreign Pipes                 | Environmental Survey Area (ESA) | Previously Sited Facility Boundary |
| Transmission Lines            |                                 | Section Lines                      |
| SPREAD BREAK                  |                                 |                                    |

500 250 0 500 1,000 Feet

| DRAWN | CHECKED | APPROVED | DATE     | REV NO. | DESCRIPTION                         |
|-------|---------|----------|----------|---------|-------------------------------------|
|       |         |          | 1/29/14  | 2       | PUC Update - Revision D-2 Alignment |
|       |         |          | 12/19/13 | 1       | PUC Update - Revision D Alignment   |
|       |         |          | 10/10/13 | 0       | PUC Submittal                       |

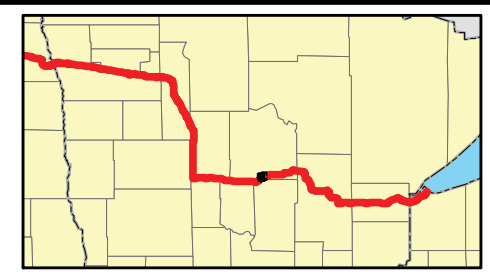
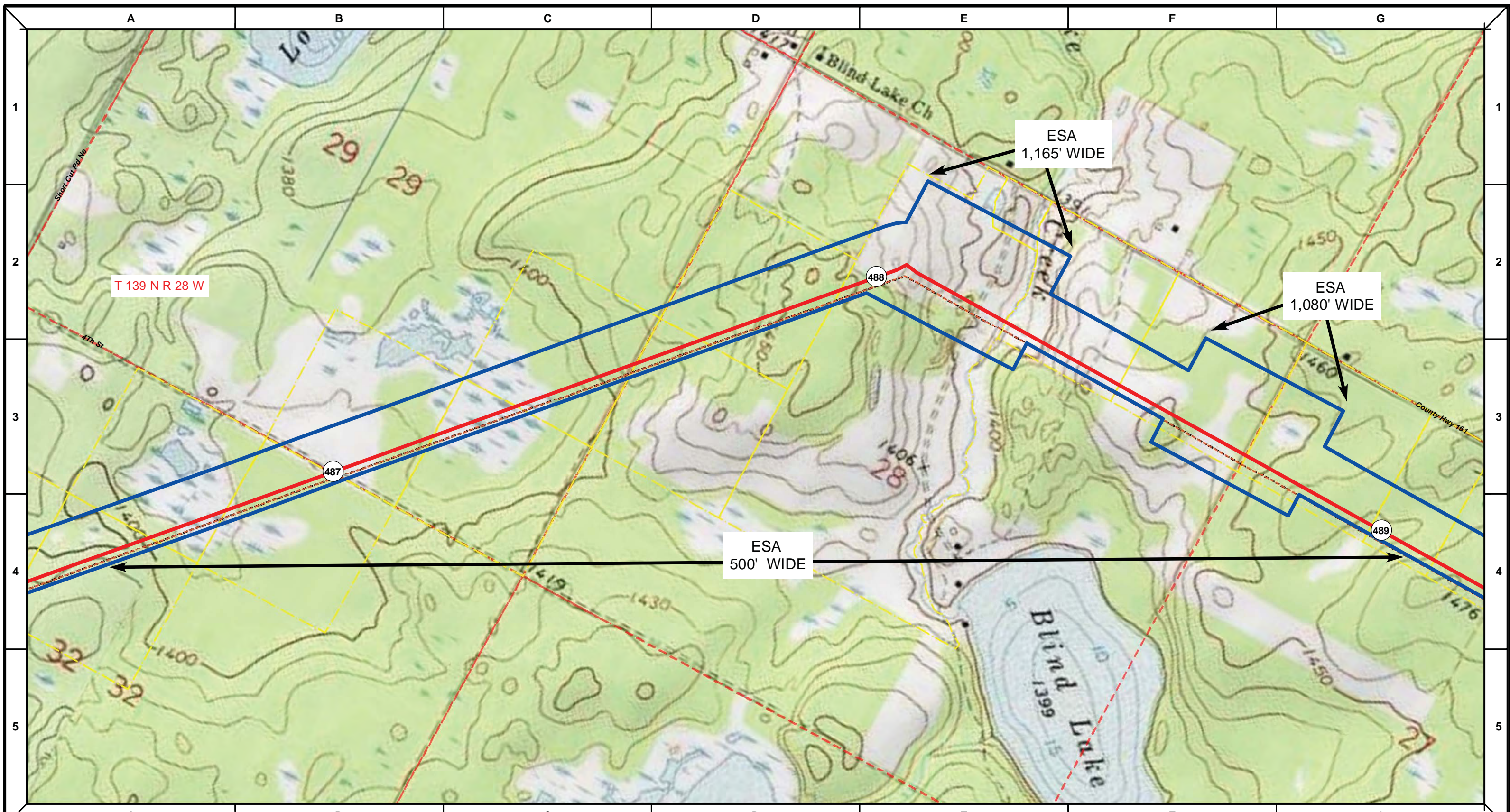
NORTH DAKOTA PIPELINE COMPANY LLC

**PROPOSED SANDPIPER  
 PIPELINE PROJECT  
 ROUTE MAP  
 Cass County, MN**

|                           |                        |
|---------------------------|------------------------|
| DRAWN: <b>MLB</b>         | CHECKED: <b>--</b>     |
| DATE: <b>Jan 30, 2014</b> | SCALE: <b>AS SHOWN</b> |

Spread:7 Map: 79 of 123





|                               |                                 |                                    |
|-------------------------------|---------------------------------|------------------------------------|
| Proposed Pipeline - Sandpiper | Milepost - Sandpiper            | Tract Boundary                     |
| Existing Enbridge Pipelines   | Potential Block Valve           | Facility Boundary                  |
| Foreign Pipes                 | Environmental Survey Area (ESA) | Previously Sited Facility Boundary |
| Transmission Lines            |                                 | Section Lines                      |
| SPREAD BREAK                  |                                 |                                    |

500 250 0 500 1,000 Feet

| DRAWN | CHECKED | APPROVED | DATE     | REV NO. | DESCRIPTION                         |
|-------|---------|----------|----------|---------|-------------------------------------|
|       |         |          | 1/29/14  | 2       | PUC Update - Revision D-2 Alignment |
|       |         |          | 12/19/13 | 1       | PUC Update - Revision D Alignment   |
|       |         |          | 10/10/13 | 0       | PUC Submittal                       |

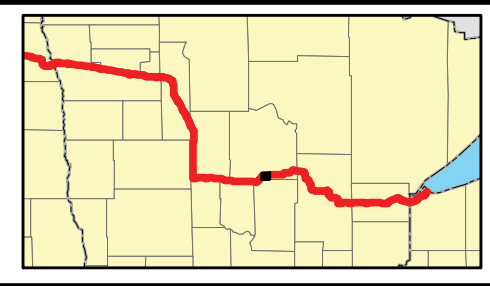
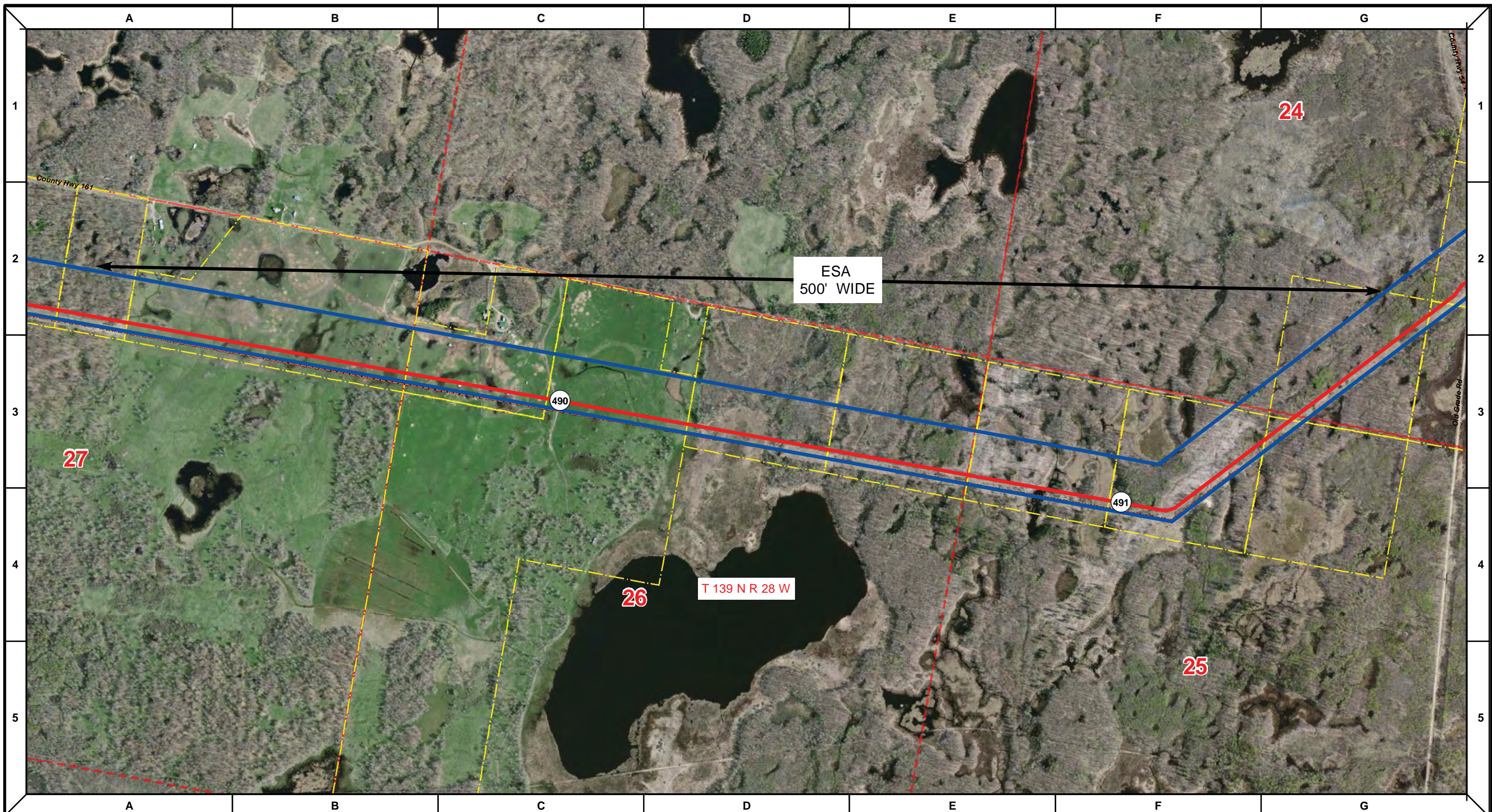
NORTH DAKOTA PIPELINE COMPANY LLC

**PROPOSED SANDPIPER PIPELINE PROJECT**  
**ROUTE MAP**  
**Cass County, MN**

|                           |                        |
|---------------------------|------------------------|
| DRAWN: <b>MLB</b>         | CHECKED: <b>--</b>     |
| DATE: <b>Jan 30, 2014</b> | SCALE: <b>AS SHOWN</b> |

Spread:7 Map: 79 of 123





|                               |                                 |                                    |
|-------------------------------|---------------------------------|------------------------------------|
| Proposed Pipeline - Sandpiper | Milepost - Sandpiper            | Tract Boundary                     |
| Existing Enbridge Pipelines   | Potential Block Valve           | Facility Boundary                  |
| Foreign Pipes                 | Environmental Survey Area (ESA) | Previously Sited Facility Boundary |
| Transmission Lines            |                                 | Section Lines                      |
| SPREAD BREAK                  |                                 |                                    |

500 250 0 500 1,000 Feet

| DRAWN | CHECKED | APPROVED | DATE     | REV NO. | DESCRIPTION                         |
|-------|---------|----------|----------|---------|-------------------------------------|
|       |         |          | 1/29/14  | 2       | PUC Update - Revision D-2 Alignment |
|       |         |          | 12/19/13 | 1       | PUC Update - Revision D Alignment   |
|       |         |          | 10/10/13 | 0       | PUC Submittal                       |

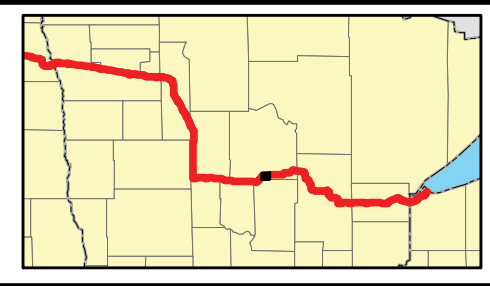
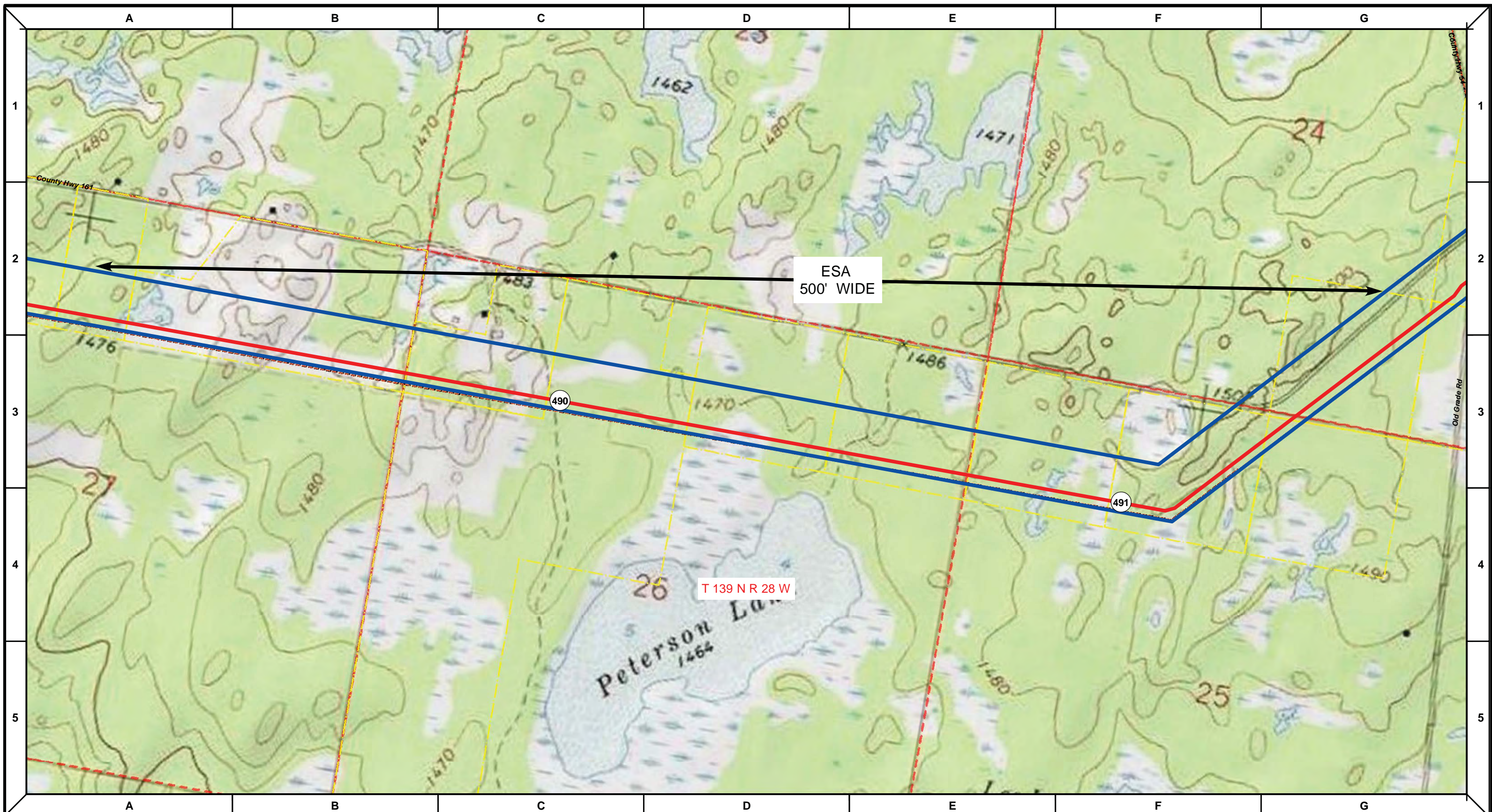
NORTH DAKOTA PIPELINE COMPANY LLC

**PROPOSED SANDPIPER  
 PIPELINE PROJECT  
 ROUTE MAP  
 Cass County, MN**

|                           |                        |
|---------------------------|------------------------|
| DRAWN: <b>MLB</b>         | CHECKED: <b>--</b>     |
| DATE: <b>Jan 30, 2014</b> | SCALE: <b>AS SHOWN</b> |

Spread:7 Map: 80 of 123





|                               |                                 |                                    |
|-------------------------------|---------------------------------|------------------------------------|
| Proposed Pipeline - Sandpiper | Milepost - Sandpiper            | Tract Boundary                     |
| Existing Enbridge Pipelines   | Potential Block Valve           | Facility Boundary                  |
| Foreign Pipes                 | Environmental Survey Area (ESA) | Previously Sited Facility Boundary |
| Transmission Lines            |                                 | Section Lines                      |
| SPREAD BREAK                  |                                 |                                    |

500 250 0 500 1,000 Feet

| DRAWN | CHECKED | APPROVED | DATE     | REV NO. | DESCRIPTION                         |
|-------|---------|----------|----------|---------|-------------------------------------|
|       |         |          | 1/29/14  | 2       | PUC Update - Revision D-2 Alignment |
|       |         |          | 12/19/13 | 1       | PUC Update - Revision D Alignment   |
|       |         |          | 10/10/13 | 0       | PUC Submittal                       |

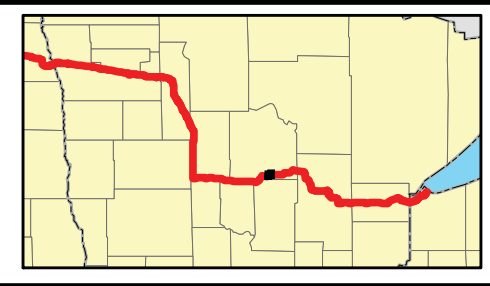
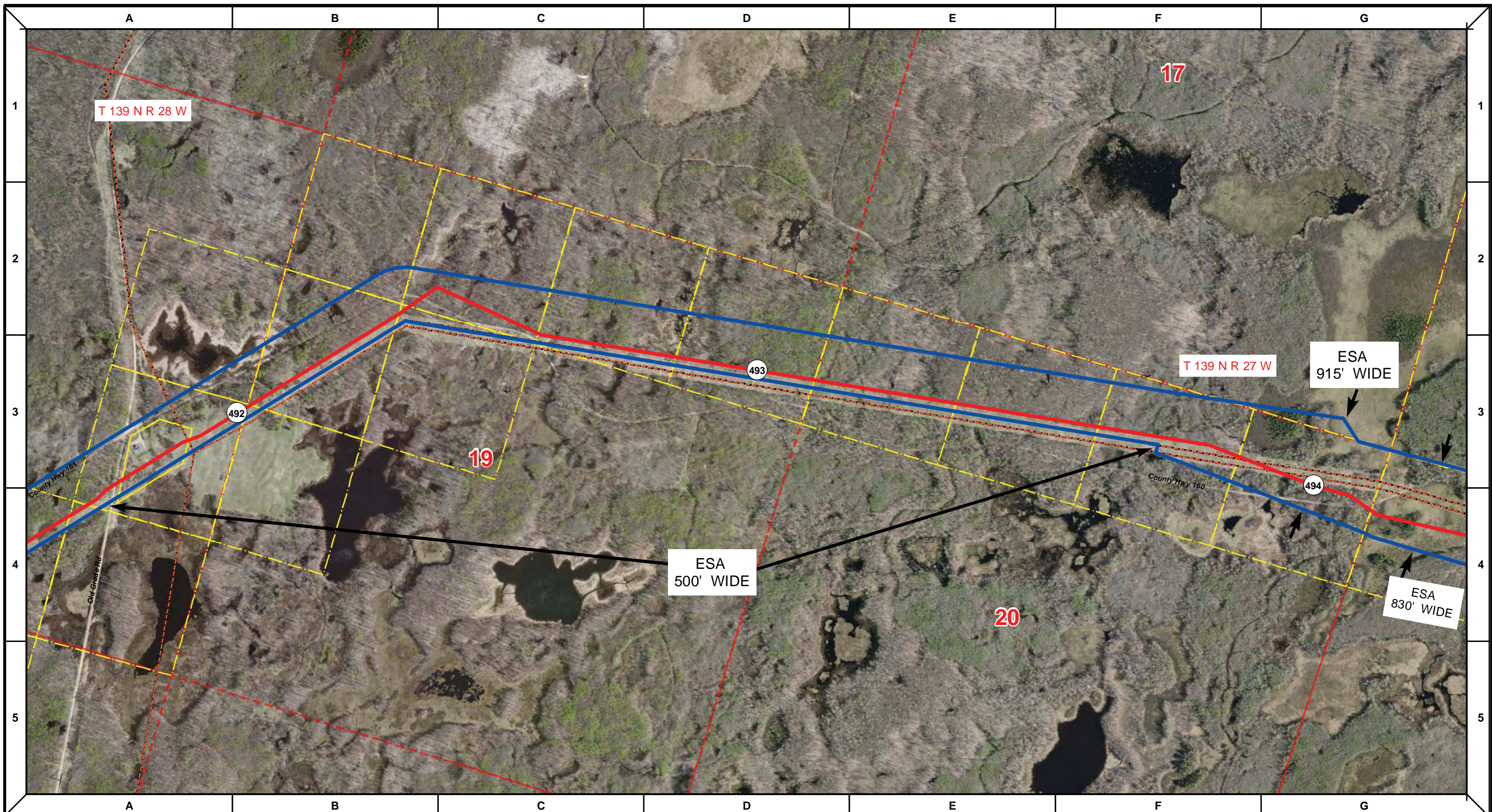
NORTH DAKOTA PIPELINE COMPANY LLC

**PROPOSED SANDPIPER PIPELINE PROJECT**  
 ROUTE MAP  
 Cass County, MN

|                           |                        |
|---------------------------|------------------------|
| DRAWN: <b>MLB</b>         | CHECKED: <b>--</b>     |
| DATE: <b>Jan 30, 2014</b> | SCALE: <b>AS SHOWN</b> |

Spread:7 Map: 80 of 123





|                               |                                 |                                    |
|-------------------------------|---------------------------------|------------------------------------|
| Proposed Pipeline - Sandpiper | Milepost - Sandpiper            | Tract Boundary                     |
| Existing Enbridge Pipelines   | Potential Block Valve           | Facility Boundary                  |
| Foreign Pipes                 | Environmental Survey Area (ESA) | Previously Sited Facility Boundary |
| Transmission Lines            |                                 | Section Lines                      |
| SPREAD BREAK                  |                                 |                                    |

500 250 0 500 1,000 Feet

| DRAWN | CHECKED | APPROVED | DATE     | REV NO. | DESCRIPTION                         |
|-------|---------|----------|----------|---------|-------------------------------------|
|       |         |          | 1/29/14  | 2       | PUC Update - Revision D-2 Alignment |
|       |         |          | 12/19/13 | 1       | PUC Update - Revision D Alignment   |
|       |         |          | 10/10/13 | 0       | PUC Submittal                       |

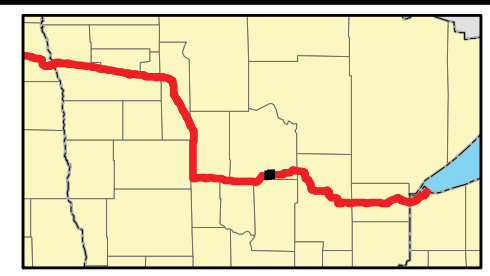
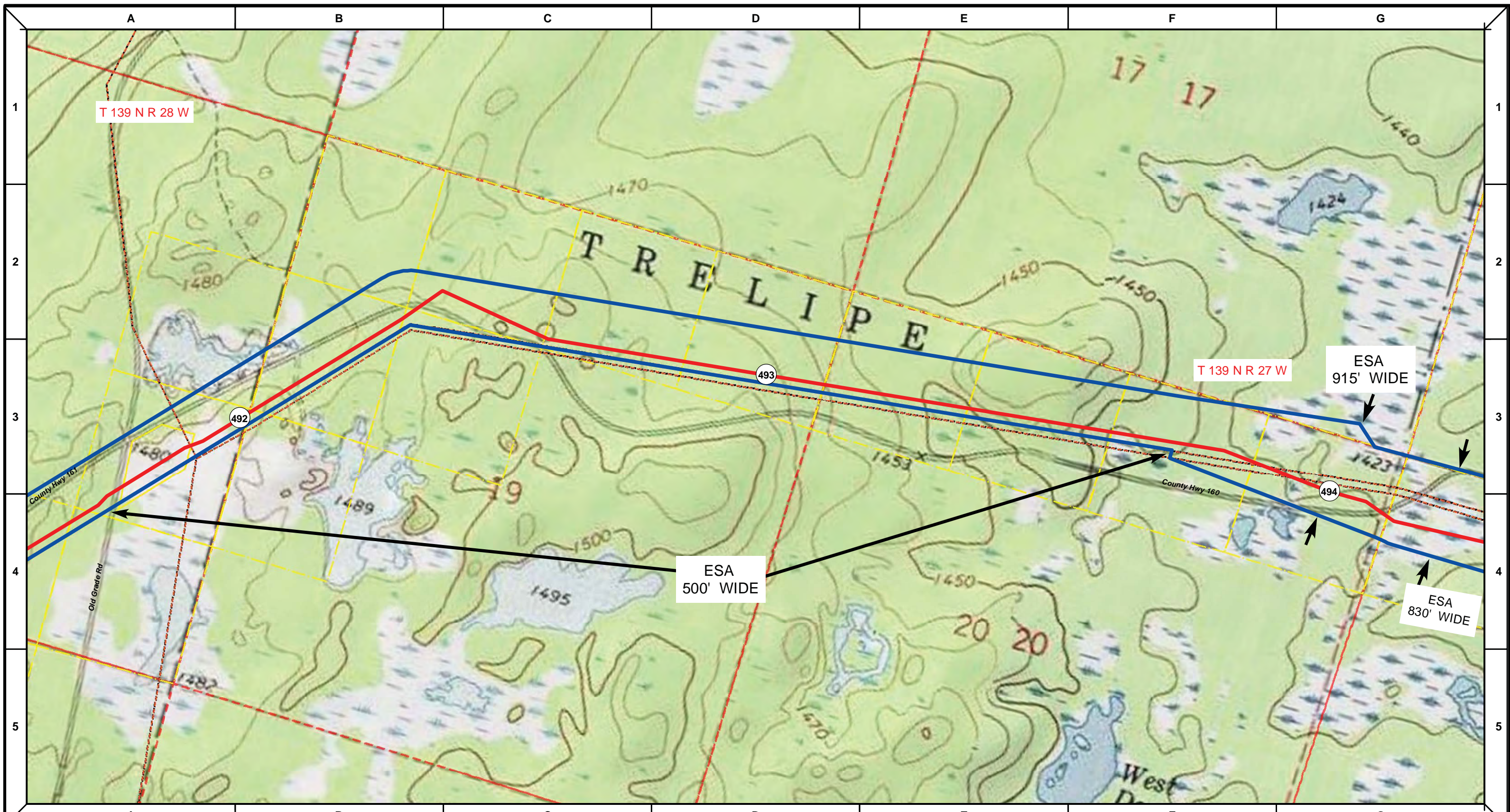
NORTH DAKOTA PIPELINE COMPANY LLC

**PROPOSED SANDPIPER PIPELINE PROJECT**  
 ROUTE MAP  
 Cass County, MN

|                           |                        |
|---------------------------|------------------------|
| DRAWN: <b>MLB</b>         | CHECKED: <b>--</b>     |
| DATE: <b>Jan 30, 2014</b> | SCALE: <b>AS SHOWN</b> |

Spread:7 Map: 81 of 123





|                               |                                 |                                    |
|-------------------------------|---------------------------------|------------------------------------|
| Proposed Pipeline - Sandpiper | Milepost - Sandpiper            | Tract Boundary                     |
| Existing Enbridge Pipelines   | Potential Block Valve           | Facility Boundary                  |
| Foreign Pipes                 | Environmental Survey Area (ESA) | Previously Sited Facility Boundary |
| Transmission Lines            |                                 | Section Lines                      |
| SPREAD BREAK                  |                                 |                                    |

500 250 0 500 1,000 Feet

| MLB   | DATE     | REV NO.  | DESCRIPTION                         |
|-------|----------|----------|-------------------------------------|
|       | 1/29/14  | 2        | PUC Update - Revision D-2 Alignment |
|       | 12/19/13 | 1        | PUC Update - Revision D Alignment   |
|       | 10/10/13 | 0        | PUC Submittal                       |
| DRAWN | CHECKED  | APPROVED | DATE                                |
|       |          |          | REV NO.                             |

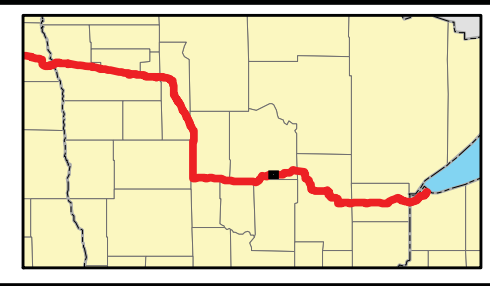
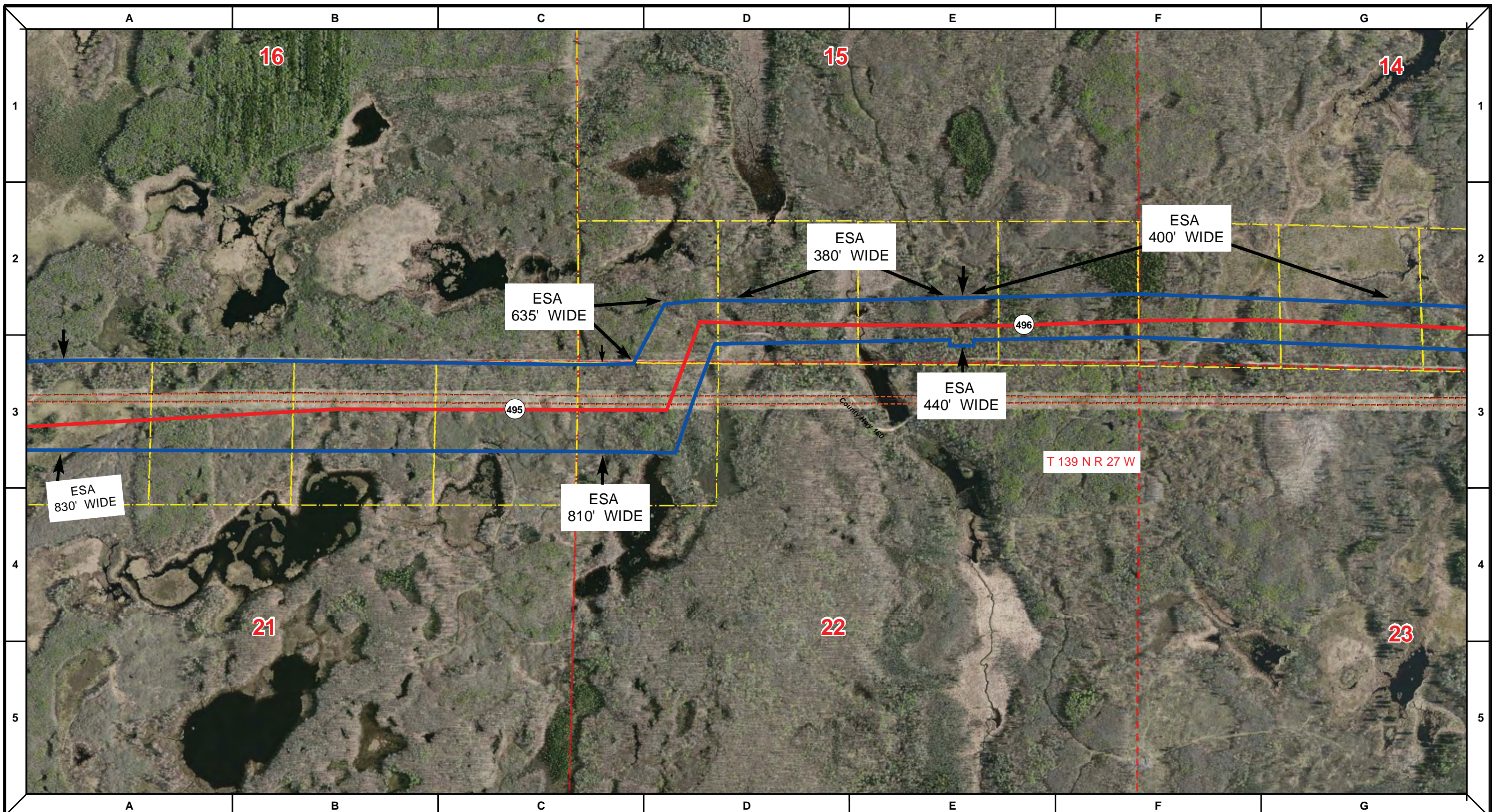
NORTH DAKOTA PIPELINE COMPANY LLC

**PROPOSED SANDPIPER  
 PIPELINE PROJECT  
 ROUTE MAP  
 Cass County, MN**

|                    |                 |
|--------------------|-----------------|
| DRAWN: MLB         | CHECKED: --     |
| DATE: Jan 30, 2014 | SCALE: AS SHOWN |

Spread:7 Map: 81 of 123





|                               |                                 |                                    |
|-------------------------------|---------------------------------|------------------------------------|
| Proposed Pipeline - Sandpiper | Milepost - Sandpiper            | Tract Boundary                     |
| Existing Enbridge Pipelines   | Potential Block Valve           | Facility Boundary                  |
| Foreign Pipes                 | Environmental Survey Area (ESA) | Previously Sited Facility Boundary |
| Transmission Lines            |                                 | Section Lines                      |
| SPREAD BREAK                  |                                 |                                    |

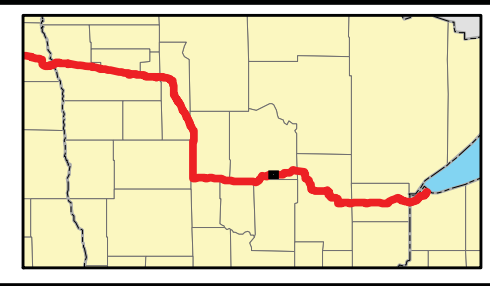
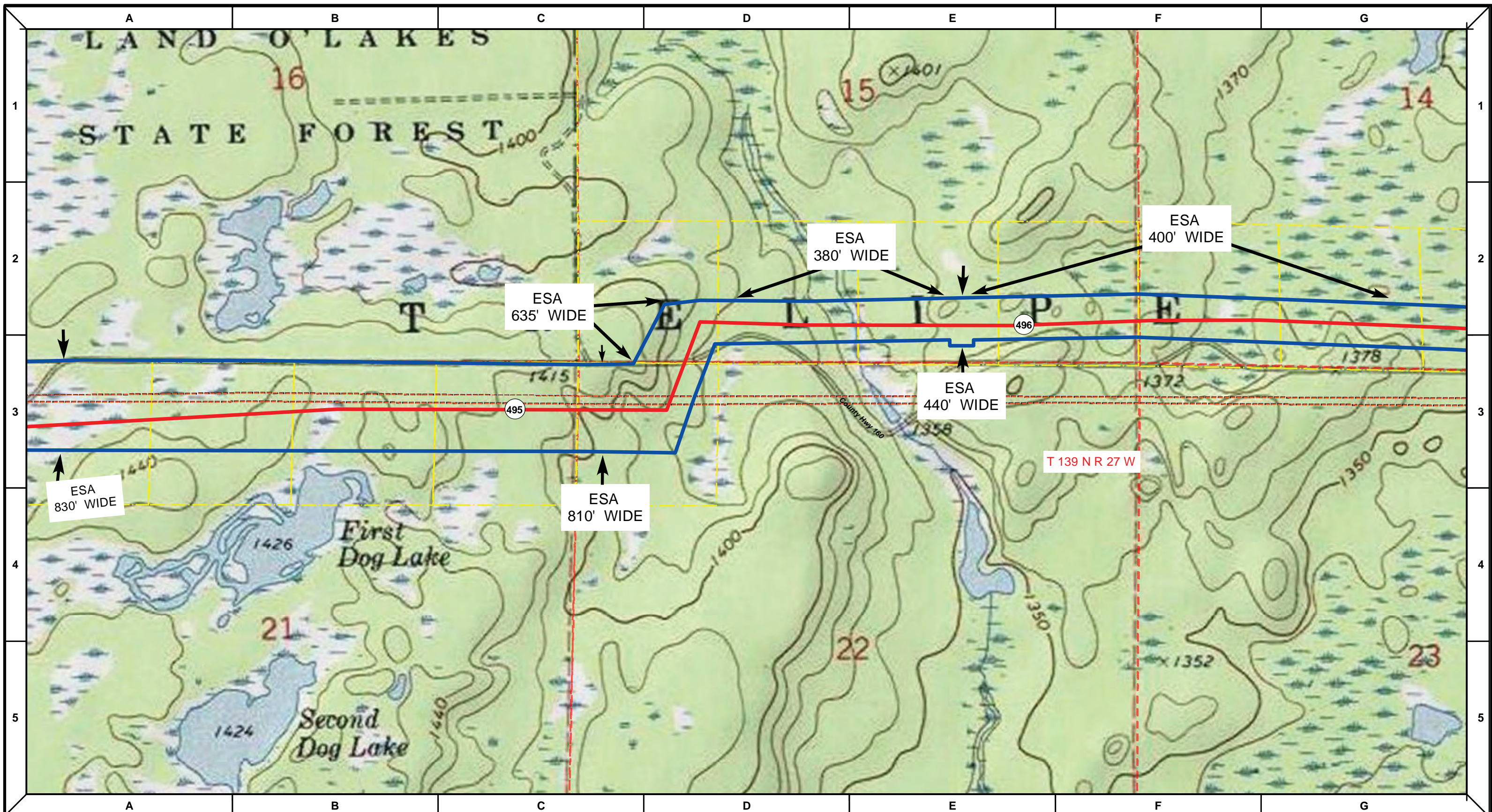
| DRAWN | CHECKED | APPROVED | DATE     | REV NO. | DESCRIPTION                         |
|-------|---------|----------|----------|---------|-------------------------------------|
|       |         |          | 1/29/14  | 2       | PUC Update - Revision D-2 Alignment |
|       |         |          | 12/19/13 | 1       | PUC Update - Revision D Alignment   |
|       |         |          | 10/10/13 | 0       | PUC Submittal                       |

NORTH DAKOTA PIPELINE COMPANY LLC  
**PROPOSED SANDPIPER PIPELINE PROJECT**  
 ROUTE MAP  
 Cass County, MN

|                    |                 |
|--------------------|-----------------|
| DRAWN: <i>MLB</i>  | CHECKED: --     |
| DATE: Jan 30, 2014 | SCALE: AS SHOWN |

Spread:7 Map: 82 of 123





|                               |                             |               |                    |              |                      |                       |                                 |                |                   |                                    |               |
|-------------------------------|-----------------------------|---------------|--------------------|--------------|----------------------|-----------------------|---------------------------------|----------------|-------------------|------------------------------------|---------------|
| Proposed Pipeline - Sandpiper | Existing Enbridge Pipelines | Foreign Pipes | Transmission Lines | SPREAD BREAK | Milepost - Sandpiper | Potential Block Valve | Environmental Survey Area (ESA) | Tract Boundary | Facility Boundary | Previously Sited Facility Boundary | Section Lines |
|-------------------------------|-----------------------------|---------------|--------------------|--------------|----------------------|-----------------------|---------------------------------|----------------|-------------------|------------------------------------|---------------|

| MLB   | DATE     | REV NO.  | DESCRIPTION                         |
|-------|----------|----------|-------------------------------------|
|       | 1/29/14  | 2        | PUC Update - Revision D-2 Alignment |
|       | 12/19/13 | 1        | PUC Update - Revision D Alignment   |
|       | 10/10/13 | 0        | PUC Submittal                       |
| DRAWN | CHECKED  | APPROVED | DATE                                |
|       |          |          | REV NO.                             |

NORTH DAKOTA PIPELINE COMPANY LLC

**PROPOSED SANDPIPER PIPELINE PROJECT**  
**ROUTE MAP**  
**Cass County, MN**

|                    |                 |
|--------------------|-----------------|
| DRAWN: MLB         | CHECKED: --     |
| DATE: Jan 30, 2014 | SCALE: AS SHOWN |

Spread:7 Map: 82 of 123