

Thomas Burns
651.621.8322 – Direct
651.621.8323 – Facsimile
tgburns@otcpas.com



Depend on **Our People**. Count on **Our Advice**.SM

September 19, 2018

Daniel P. Wolf
Executive Secretary
Minnesota Public Utilities Commission
121 Seventh Place E, Suite 350
St. Paul, MN 55101-2147

Re: An Update in Matter of West Central Telephone Association's Status as an Eligible
Telecommunications Carrier (ETC)

Dear Mr. Wolf:

Enclosed via eFiling please find a letter which provides an update on the West Central
Telephone Association's status as an Eligible Telecommunications Carrier

Sincerely,

/s/ Thomas G. Burns

Thomas G. Burns
Consultant on behalf of West Central Telephone Association



West Central Telephone Association
308 Frontage Rd., Sebeka, MN 56477

Chad Bullock
General Manager
218.837.1150
ChadB@wcta.net

September 19, 2018

Minnesota Public Utilities Commission
121 7th Place E
Suite 350
Saint Paul, Minnesota 55101

Dear Commissioners:

This letter is to inform the Commission that West Central Telephone Association (“WCTA”) won the FCC Connect America Fund II reverse auction for certain census blocks. Accordingly, WCTA will build out its network to make service available to locations within certain census blocks and will receive universal service funding based on FCC rules.

The Commission granted the WCTA petition for Eligible Telecommunications Carrier (“ETC”) status in Docket No.: P-409/M-17-837 in the Staples and Wadena Minnesota exchanges. This enables WCTA to be reimbursed under the FCC’s Lifeline program for providing discounted telecommunications services to qualifying customers in CLEC exchanges.

The attached map distinguishes the CAF II census blocks area as compared to the broader exchange areas where the Commission granted ETC designation for the purpose of the Lifeline discount to qualifying customers.

If you have any questions in this matter please contact me.

Sincerely,

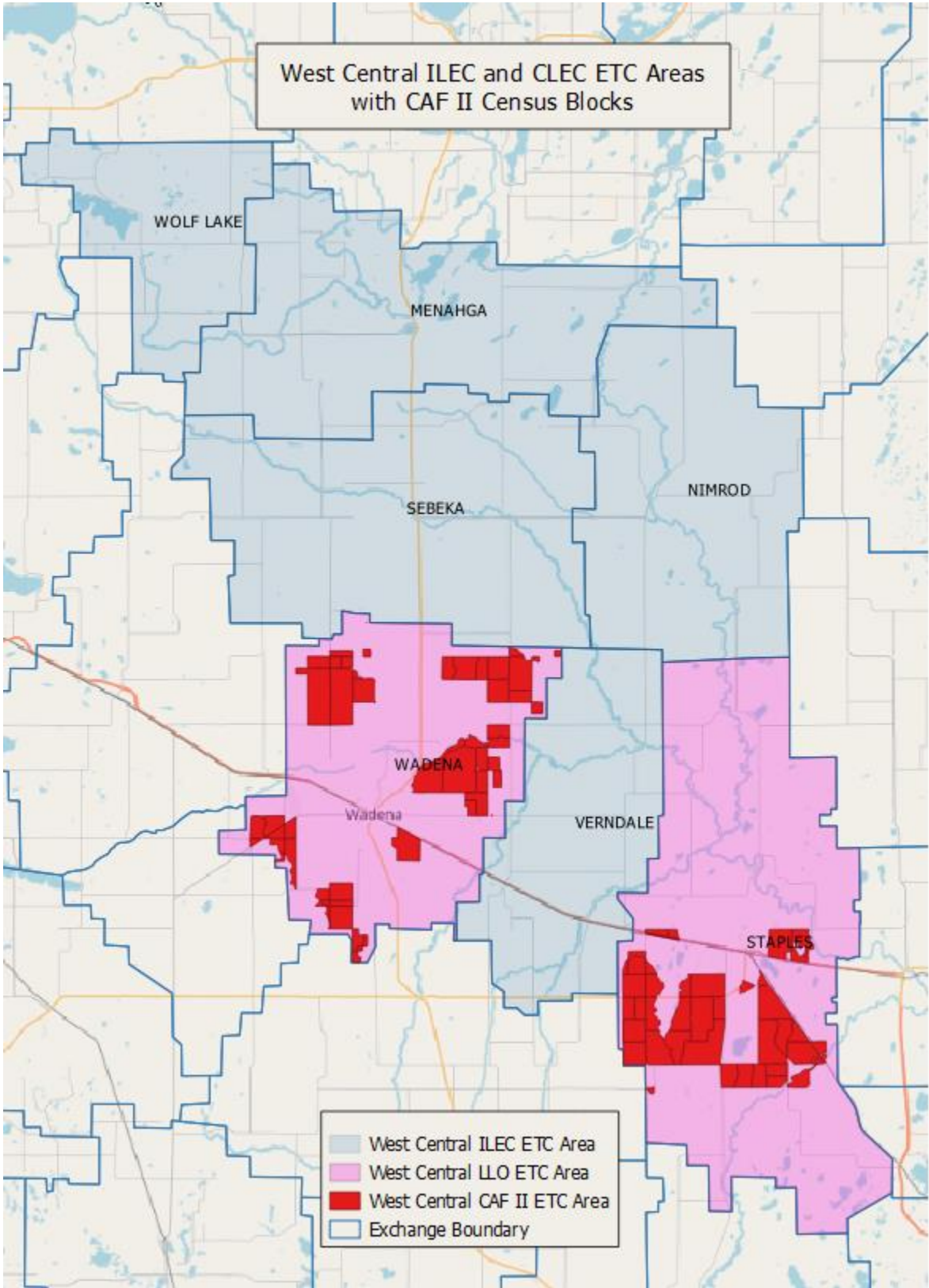
A handwritten signature in blue ink, appearing to read 'Chad Bullock', is written over a light blue circular stamp.

Chad Bullock
General Manager

Attachments:

- Map of WTCA ETC area and CAF II census Blocks
- List of CAF II census blocks to be served by WCTA

West Central ILEC and CLEC ETC Areas
with CAF II Census Blocks



ETC Service Areas: Staples and Wadena exchanges where CenturyLink QC is the incumbent local exchange carrier.

CAF II Census Blocks

| | | |
|-----------------|-----------------|-----------------|
| 271119605004203 | 271537901001047 | 271537902003014 |
| 271119605004204 | 271537901001057 | 271537902003016 |
| 271119605004205 | 271537901001058 | 271537902003017 |
| 271119605004206 | 271537901001059 | 271537902003019 |
| 271119606004001 | 271537901001060 | 271594802002017 |
| 271119606004002 | 271537901001061 | 271594802002019 |
| 271119613004013 | 271537901001062 | 271594802002020 |
| 271119613004014 | 271537901001064 | 271594802002021 |
| 271119613004015 | 271537901001065 | 271594802002045 |
| 271119613004017 | 271537901001075 | 271594802002088 |
| 271119613004020 | 271537901001076 | 271594802006012 |
| 271119613004022 | 271537901001077 | 271594802006036 |
| 271119613004023 | 271537901001083 | 271594802006037 |
| 271119613004024 | 271537901001084 | 271594802006038 |
| 271119613004038 | 271537901001085 | 271594802006039 |
| 271119613004044 | 271537901001086 | 271594802006042 |
| 271119613004045 | 271537901001087 | 271594802006051 |
| 271119613004046 | 271537901001088 | 271594802006053 |
| 271119613004047 | 271537901001089 | 271594802006055 |
| 271119613004048 | 271537901001091 | 271594802006064 |
| 271119613004050 | 271537901001093 | 271594802006072 |
| 271119613004051 | 271537901001094 | 271594802006074 |
| 271119613004052 | 271537901001095 | 271594802006075 |
| 271537901001002 | 271537901001096 | 271594802006078 |
| 271537901001003 | 271537901001098 | 271594802006079 |
| 271537901001030 | 271537902001008 | 271594802006081 |
| 271537901001031 | 271537902001009 | 271594802006082 |
| 271537901001035 | 271537902001010 | 271594802006083 |
| 271537901001036 | 271537902001012 | 271594802006094 |
| 271537901001037 | 271537902001085 | 271594802006096 |
| 271537901001039 | 271537902001086 | 271594802006098 |
| 271537901001044 | 271537902001087 | 271594802006101 |
| 271537901001045 | 271537902001088 | 271594803006039 |
| 271537901001046 | 271537902001104 | |