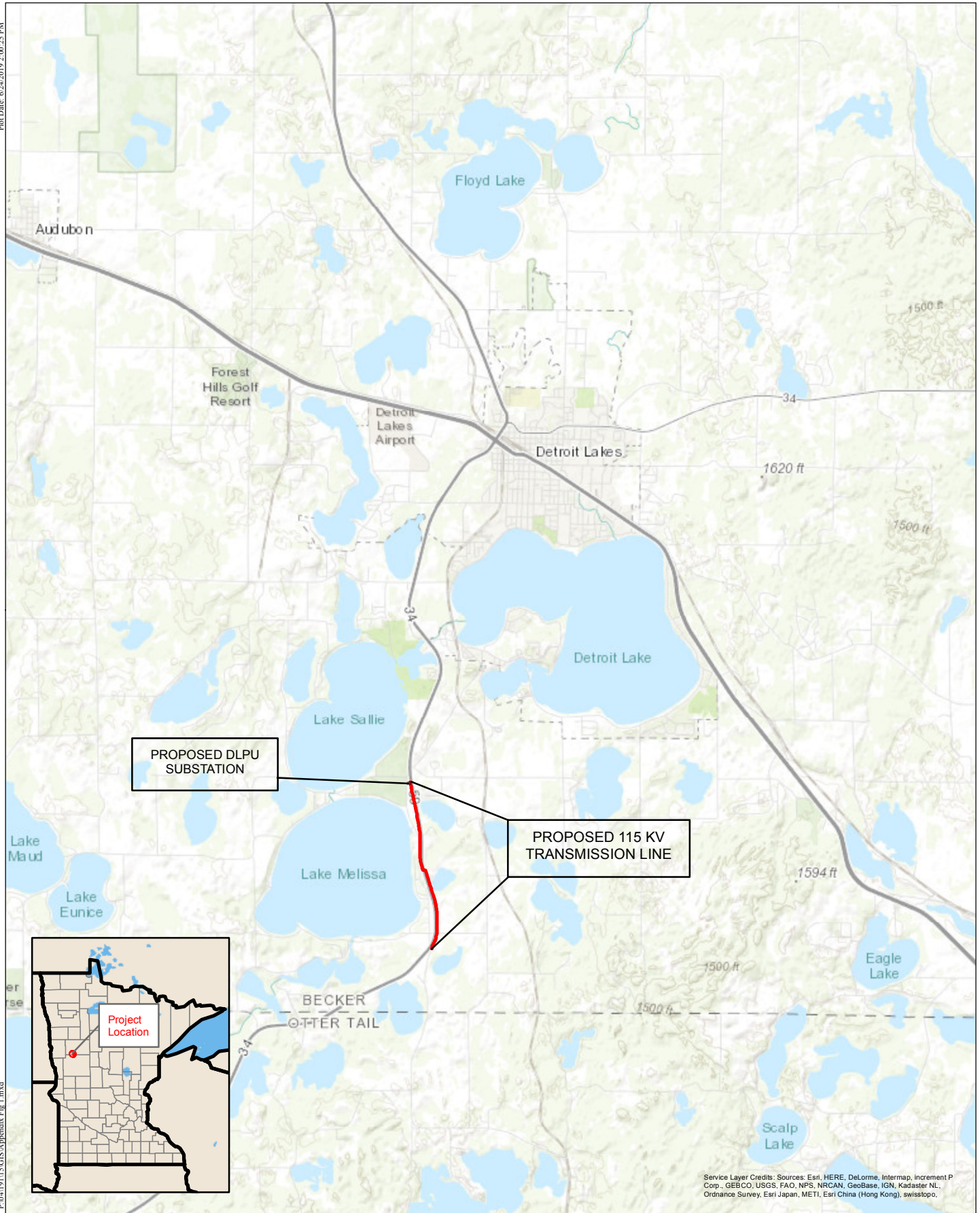


APPENDIX A



Service Layer Credits: Sources: Esri, HERE, DeLorme, Intermap, increment P Corp., GEBCO, USGS, FAO, NPS, NRCAN, GeoBase, IGN, Kadaster NL, Ordnance Survey, Esri Japan, METI, Esri China (Hong Kong), swisstopo.

REV	DATE	DESCRIPTION

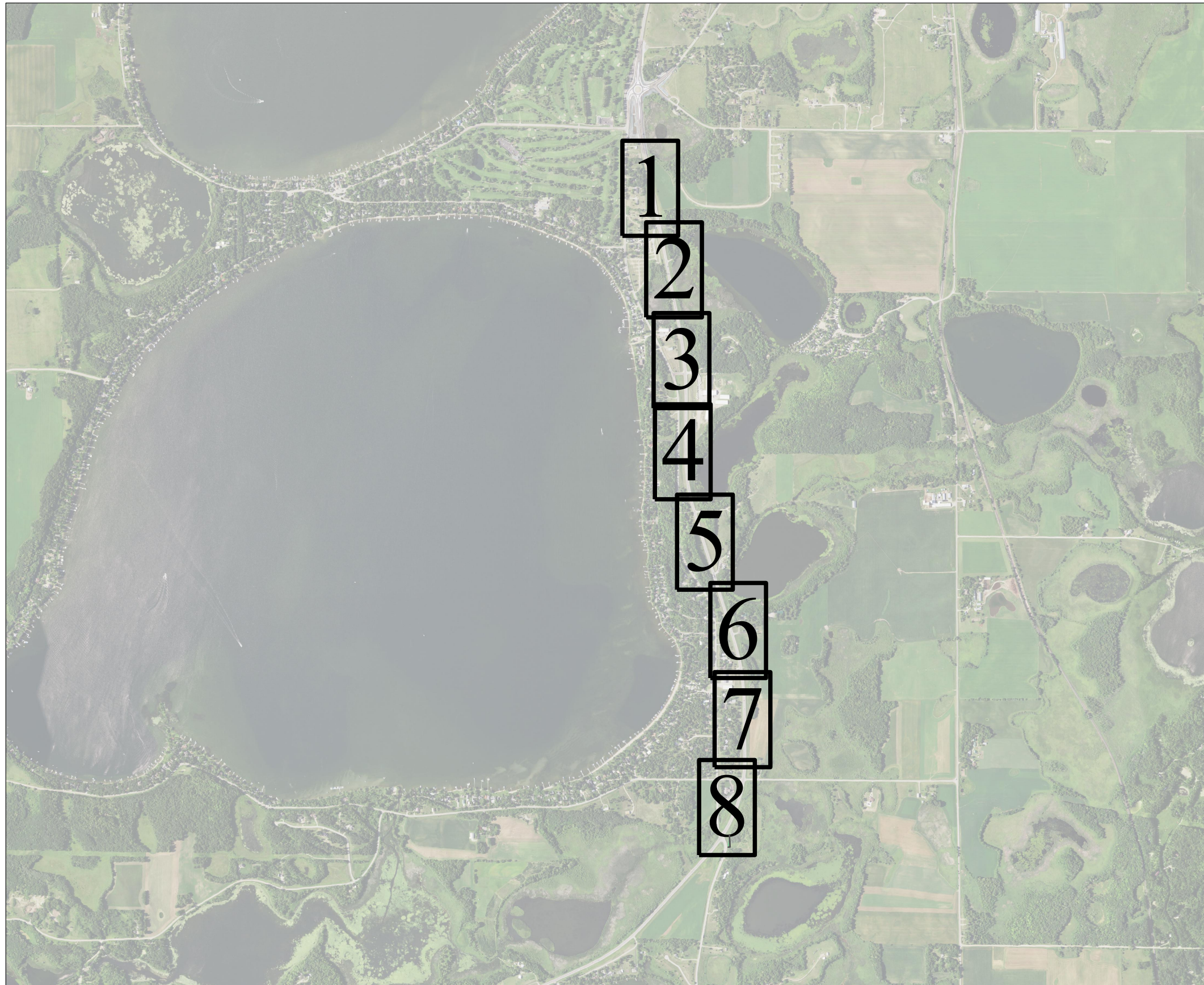


Project Manager: DJH
 Designer: DJH
 Project Number: 419115
 Phone: (712) 742-2531

DETROIT LAKES
 PUBLIC UTILITIES
 DETROIT LAKES, MN

PROJECT LOCATION
 115 KV TRANSMISSION LINE

F I G U R E
 Appendix A
 Figure 1



MAP LEGEND

- MNDOT Right-of-way
- Proposed DLPU 115 kV Transmission Line
- Existing 11k kV Transmission Line
(owned by Great River Energy)
- Highway Centerline (CL)
- Proposed Transmission Line Structure
- Anticipated Route Width
(Existing MNDOT Right-of-way)
- Portion of MNDOT Right-of-way occupied
by DLPU HVTL
- Proposed 115 kV Substation
- Proposed permanent DLPU Easement

NOTES

1. Dimensions are approximate and based on data provided by MNDOT. Final dimensions to be determined with final design and topographical survey.



REV	DATE	DESCRIPTION
	10-30-2019	

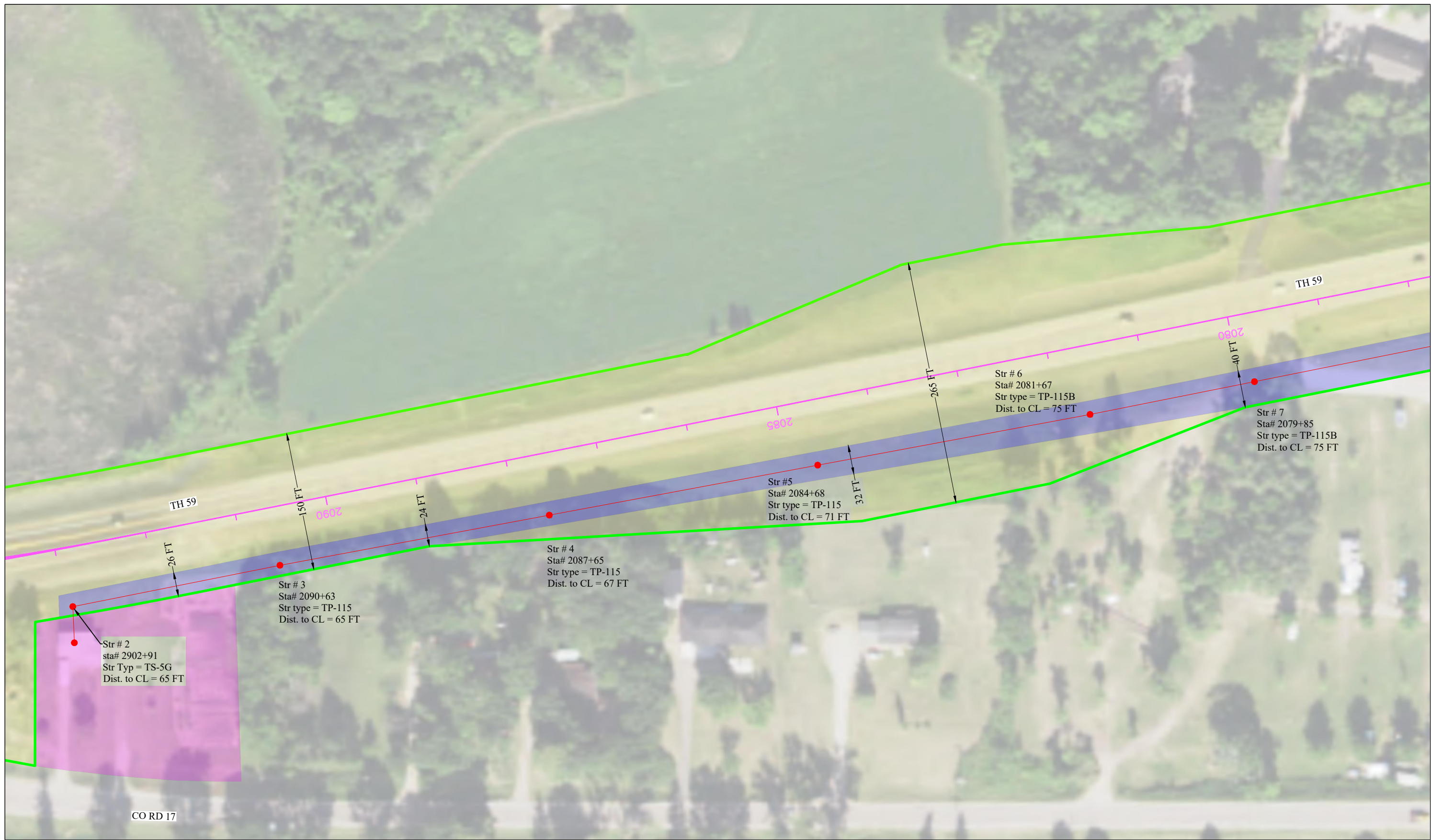


Project Manager: DJH
 Designer: JDL
 Project Number: 419115
 Phone: (712) 472-2531

DETROIT LAKES PUBLIC UTILITIES
 DETROIT LAKES, MN

APPENDIX A - FIGURE 2
 PROPOSED 115 kV TRANSMISSION LINE
 CORRIDOR RIGHT-OF-WAY MAP

S
H
E
E
T
KEY



SEE SHEET 2



REV	DATE	DESCRIPTION
	10-30-2019	



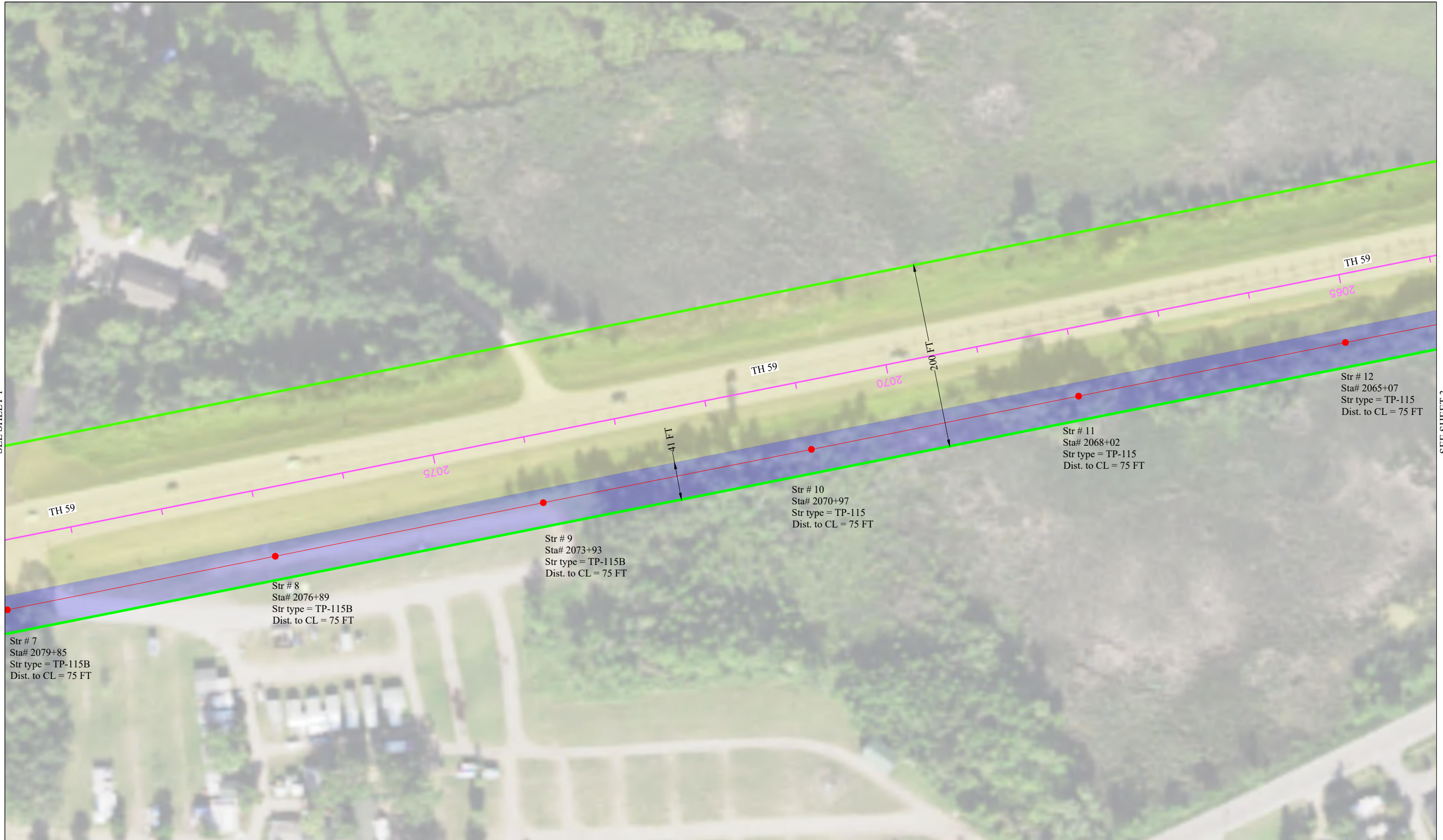
Project Manager: DJH
 Designer: JDL
 Project Number: 419115
 Phone: (712) 472-2531

DETROIT LAKES PUBLIC UTILITIES
 DETROIT LAKES, MN

APPENDIX A - 2
 PROPOSED 115 kV TRANSMISSION LINE
 CORRIDOR RIGHT-OF-WAY MAP

S
H
E
E
T
 1 OF 8

SEE SHEET 1



SEE SHEET 3

Str # 7
Sta# 2079+85
Str type = TP-115B
Dist. to CL = 75 FT

Str # 8
Sta# 2076+89
Str type = TP-115B
Dist. to CL = 75 FT

Str # 9
Sta# 2073+93
Str type = TP-115B
Dist. to CL = 75 FT

Str # 10
Sta# 2070+97
Str type = TP-115
Dist. to CL = 75 FT

Str # 11
Sta# 2068+02
Str type = TP-115
Dist. to CL = 75 FT

Str # 12
Sta# 2065+07
Str type = TP-115
Dist. to CL = 75 FT



REV	DATE	DESCRIPTION
	10-30-2019	



Project Manager: DJH
Designer: JDL
Project Number: 419115
Phone: (712) 472-2531

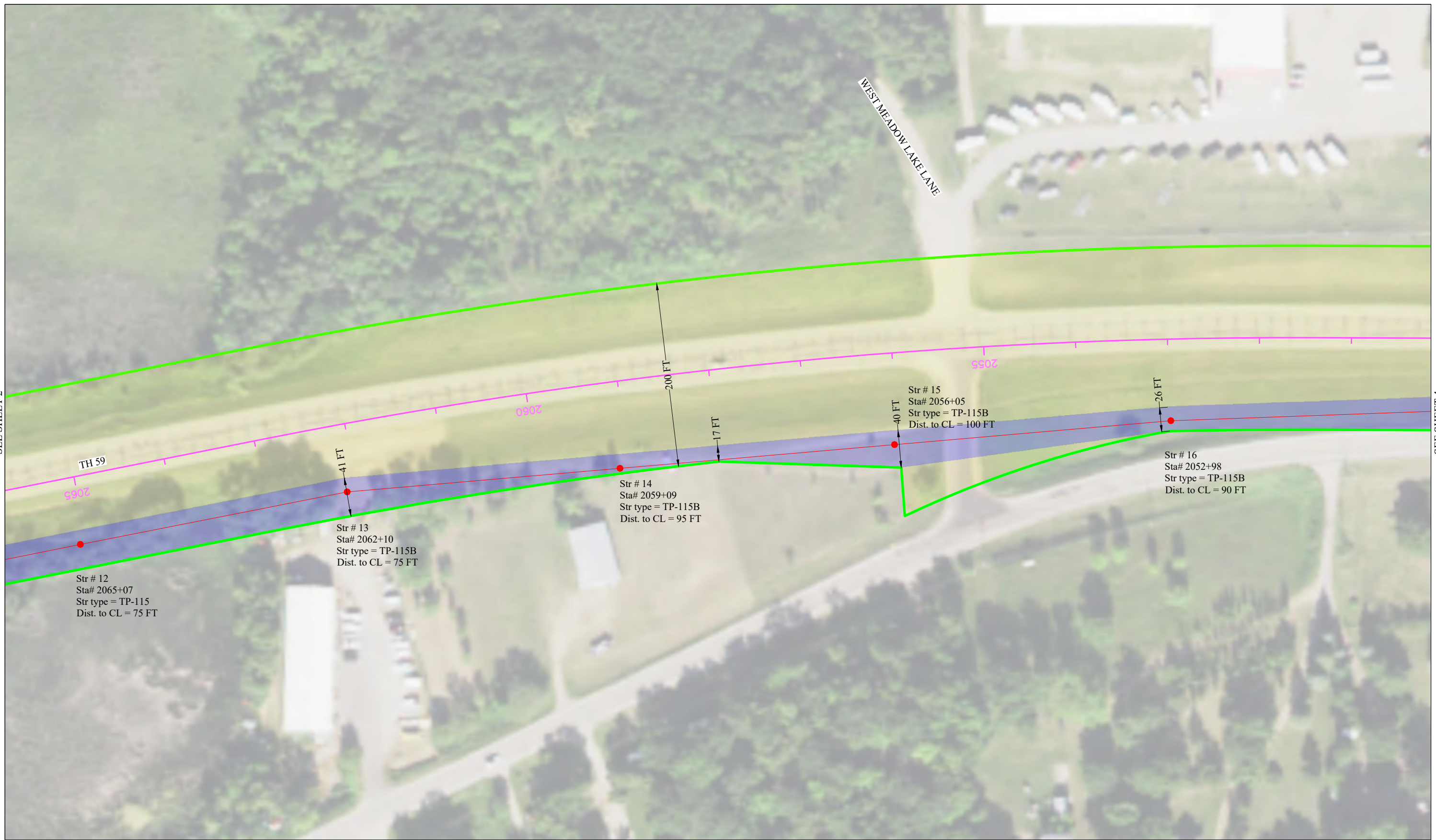
DETROIT LAKES PUBLIC UTILITIES
DETROIT LAKES, MN

APPENDIX A - 2
PROPOSED 115 kV TRANSMISSION LINE
CORRIDOR RIGHT-OF-WAY MAP

S
H
E
E
T
2 OF 8

SEE SHEET 2

SEE SHEET 4



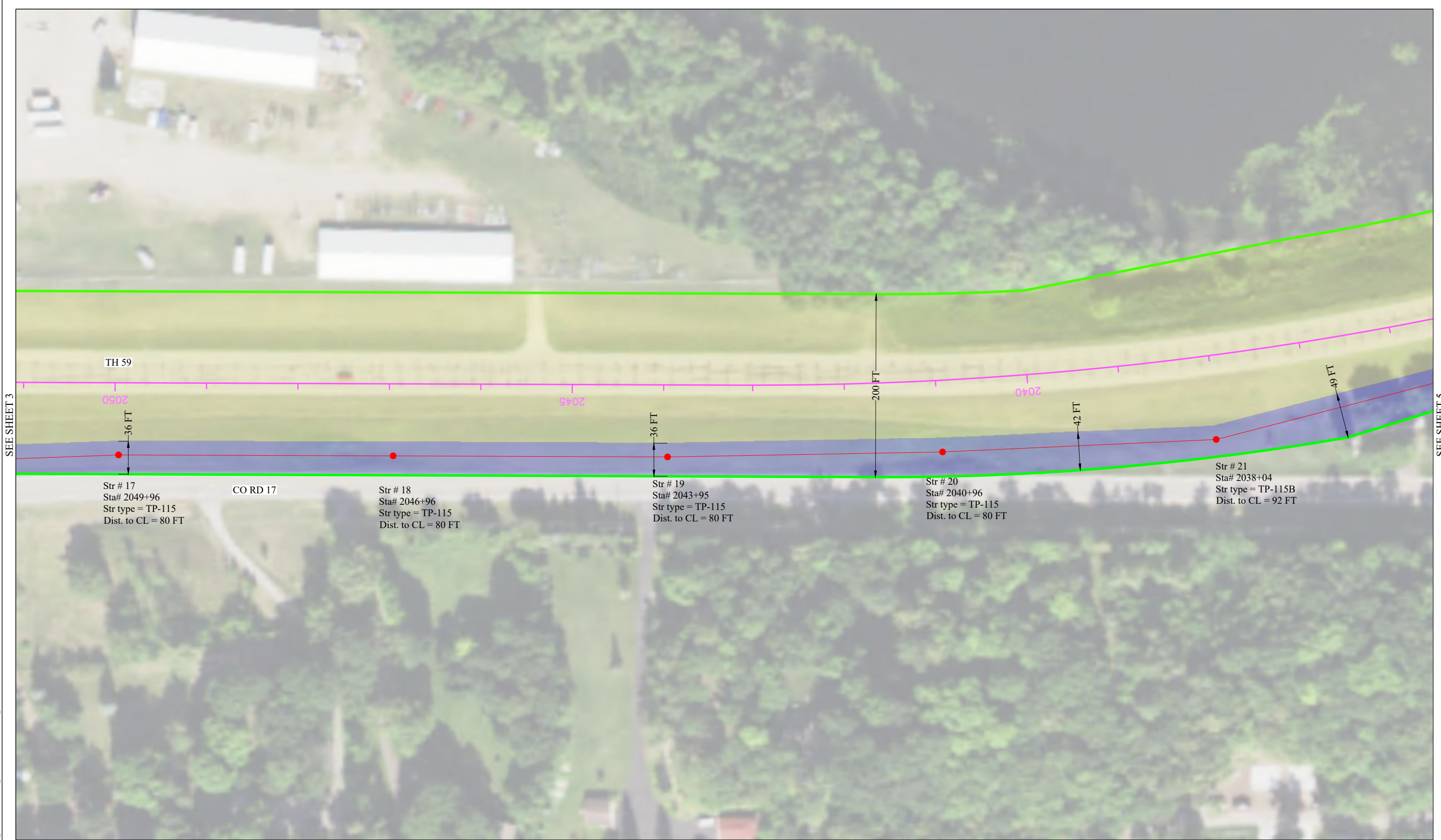
REV	DATE	DESCRIPTION
	10-30-2019	



Project Manager: DJH
 Designer: JDL
 Project Number: 419115
 Phone: (712) 472-2531

DETROIT LAKES PUBLIC UTILITIES
 DETROIT LAKES, MN

APPENDIX A - 2
 PROPOSED 115 kV TRANSMISSION LINE
 CORRIDOR RIGHT-OF-WAY MAP



SEE SHEET 3

SEE SHEET 5

Str # 17
Sta# 2049+96
Str type = TP-115
Dist. to CL = 80 FT

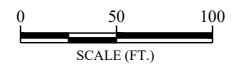
CO RD 17

Str # 18
Sta# 2046+96
Str type = TP-115
Dist. to CL = 80 FT

Str # 19
Sta# 2043+95
Str type = TP-115
Dist. to CL = 80 FT

Str # 20
Sta# 2040+96
Str type = TP-115
Dist. to CL = 80 FT

Str # 21
Sta# 2038+04
Str type = TP-115B
Dist. to CL = 92 FT



REV	DATE	DESCRIPTION
	10-30-2019	



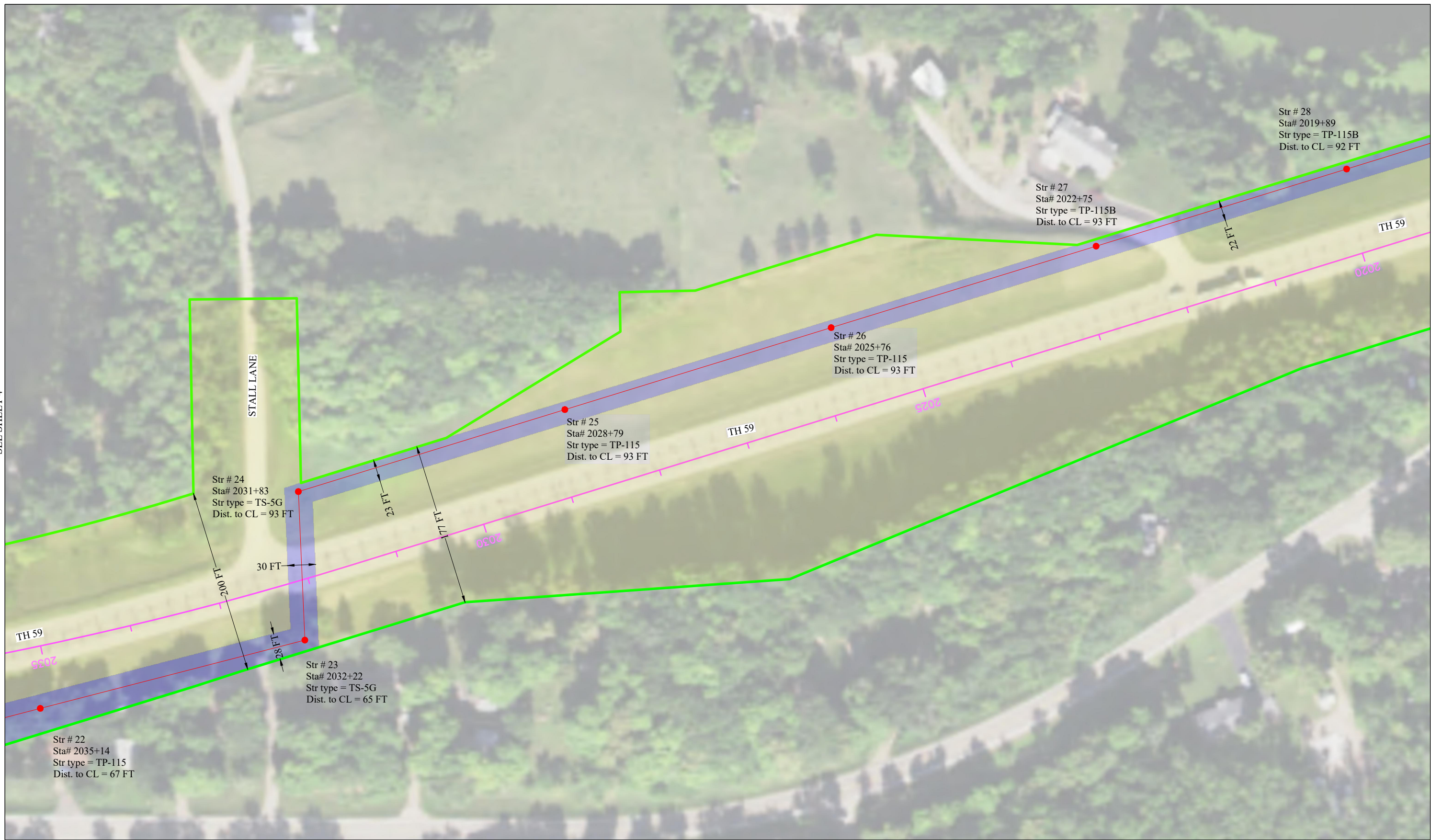
Project Manager: DJH
Designer: JDL
Project Number: 419115
Phone: (712) 472-2531

DETROIT LAKES PUBLIC UTILITIES
DETROIT LAKES, MN

APPENDIX A - 2
PROPOSED 115 kV TRANSMISSION LINE
CORRIDOR RIGHT-OF-WAY MAP

S
H
E
E
T
4 OF 8

SEE SHEET 4



SEE SHEET 6

REV	DATE	DESCRIPTION
	10-30-2019	



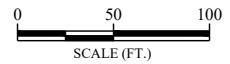
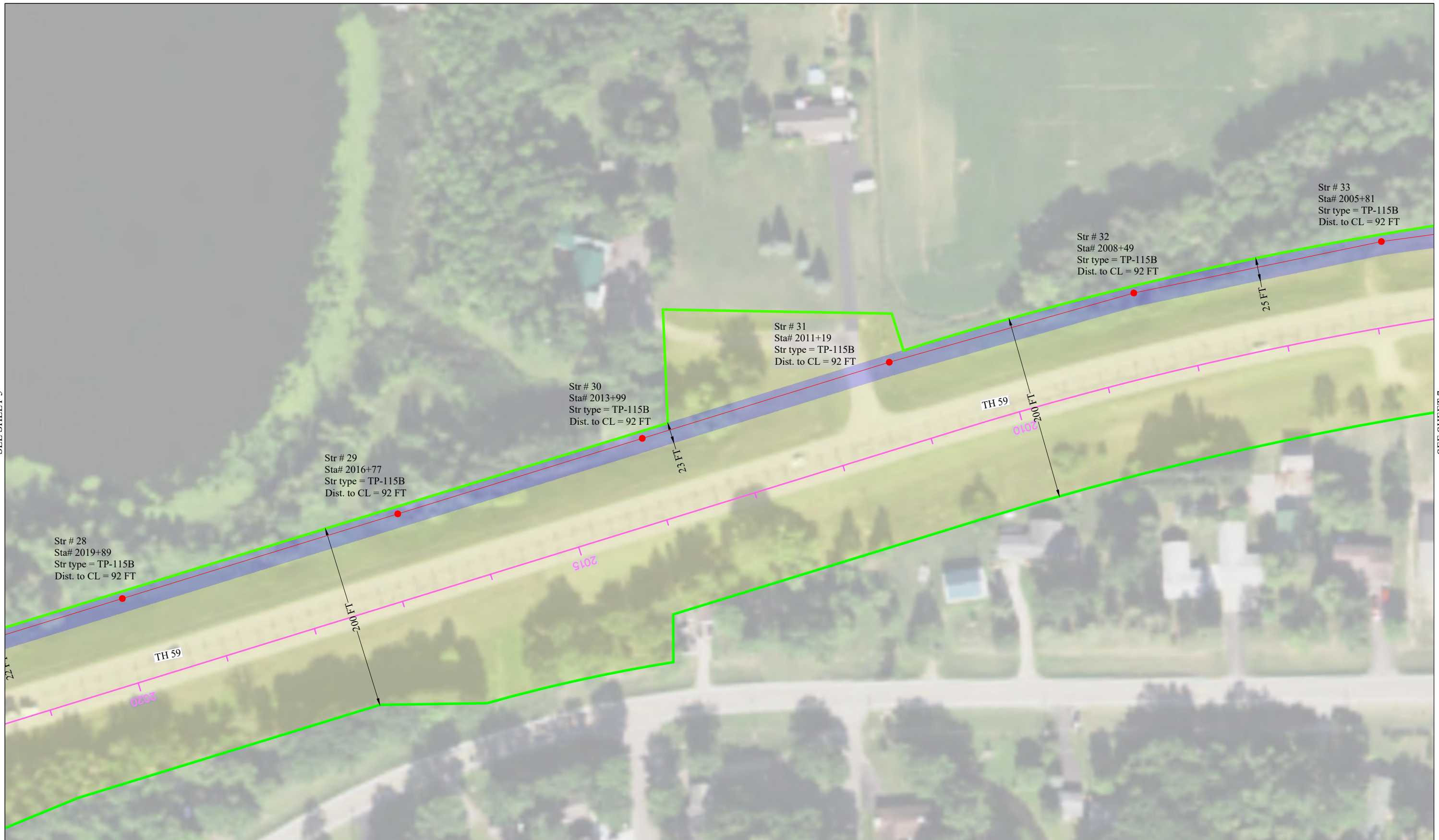
Project Manager: DJH
 Designer: JDL
 Project Number: 419115
 Phone: (712) 472-2531

DETROIT LAKES PUBLIC UTILITIES
 DETROIT LAKES, MN

APPENDIX A - 2
 PROPOSED 115 kV TRANSMISSION LINE
 CORRIDOR RIGHT-OF-WAY MAP

SEE SHEET 5

SEE SHEET 7



REV	DATE	DESCRIPTION
	10-30-2019	



Project Manager: DJH
 Designer: JDL
 Project Number: 419115
 Phone: (712) 472-2531

DETROIT LAKES PUBLIC UTILITIES
 DETROIT LAKES, MN

APPENDIX A - 2
 PROPOSED 115 kV TRANSMISSION LINE
 CORRIDOR RIGHT-OF-WAY MAP

S
H
E
E
T
 6 OF 8



SEE SHEET 6

SEE SHEET 8



REV	DATE	DESCRIPTION
	10-30-2019	



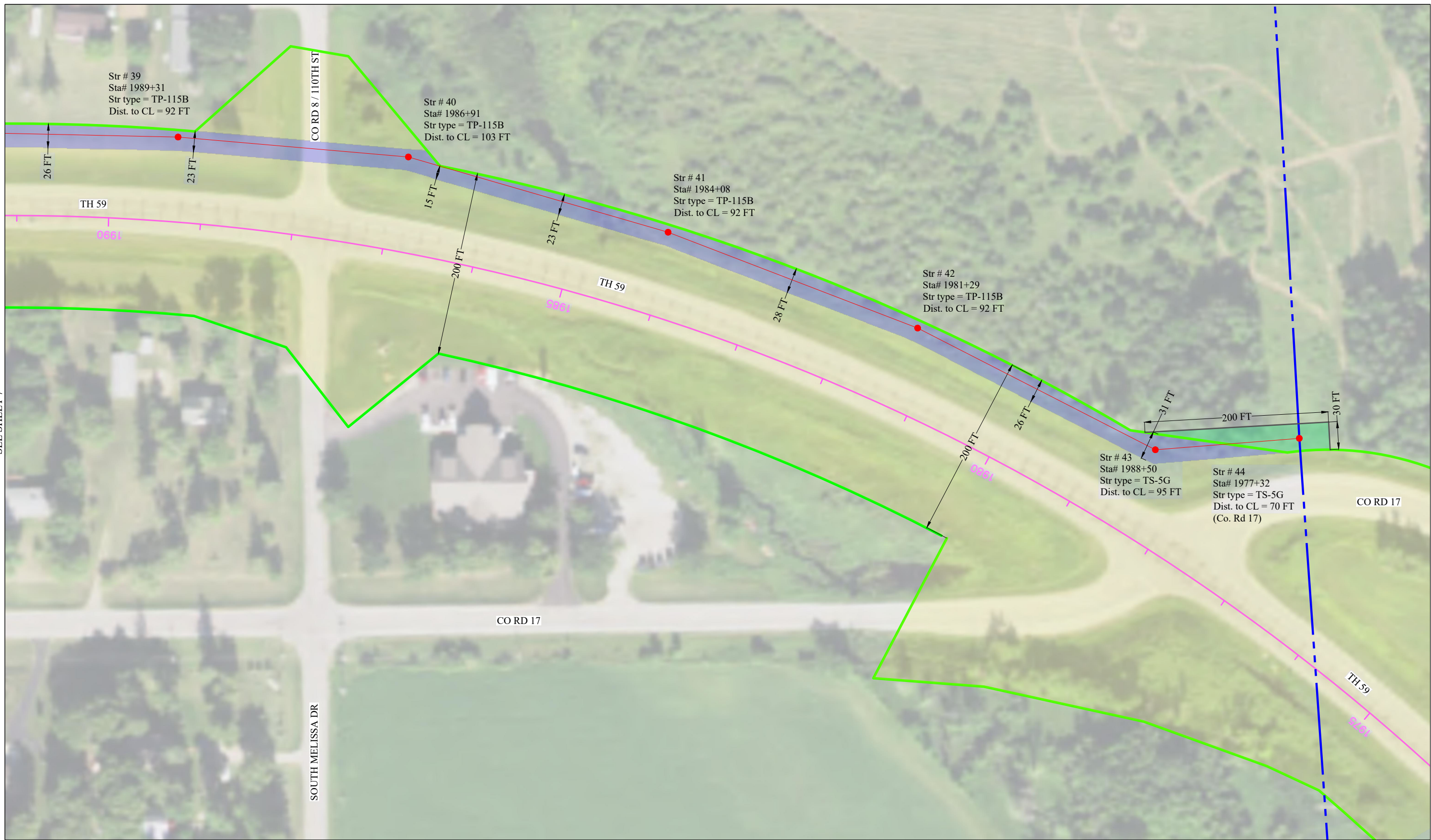
Project Manager: DJH
 Designer: JDL
 Project Number: 419115
 Phone: (712) 472-2531

DETROIT LAKES PUBLIC UTILITIES
 DETROIT LAKES, MN

APPENDIX A - 2
 PROPOSED 115 kV TRANSMISSION LINE
 CORRIDOR RIGHT-OF-WAY MAP

SHEET
 7 OF 8

SEE SHEET 7



REV	DATE	DESCRIPTION
	10-30-2019	



Project Manager: DJH
 Designer: JDL
 Project Number: 419115
 Phone: (712) 472-2531

DETROIT LAKES PUBLIC UTILITIES
 DETROIT LAKES, MN

APPENDIX A - 2
 PROPOSED 115 kV TRANSMISSION LINE
 CORRIDOR RIGHT-OF-WAY MAP