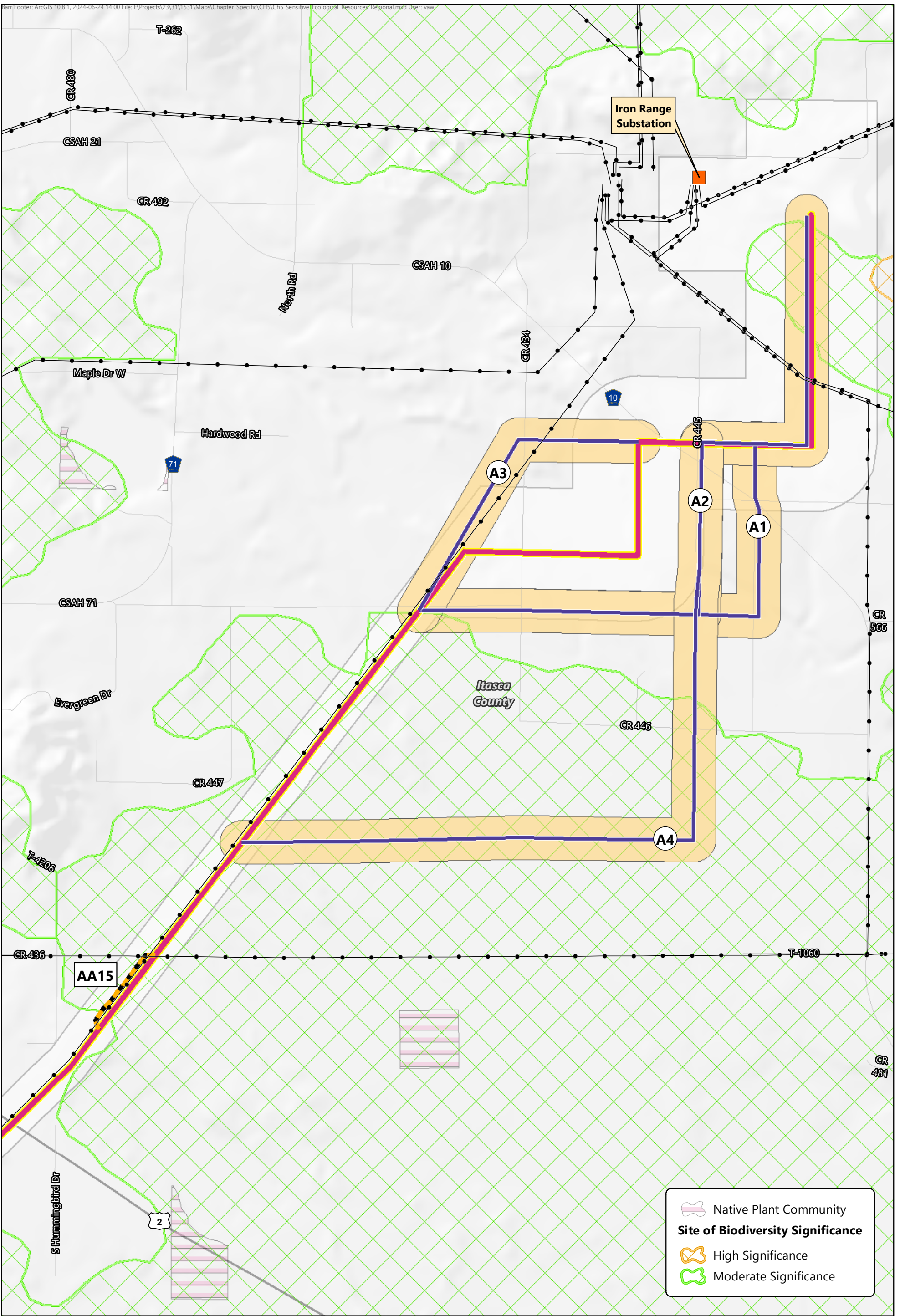















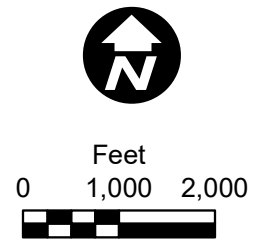
Map Book 5I
Sensitive Ecological Resources



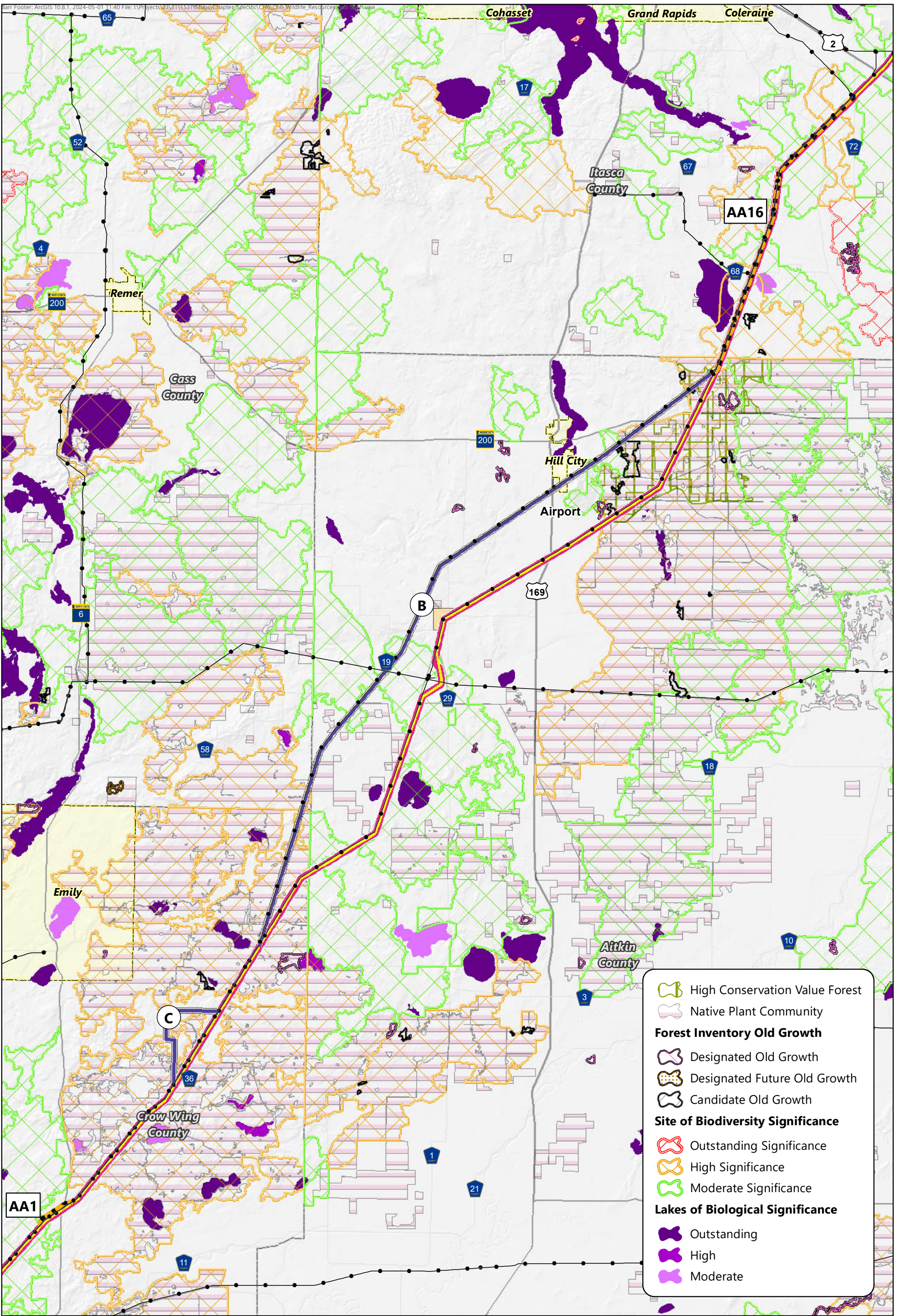
-  Applicants' Proposed Route
-  Route Width
-  Applicants' Proposed Right of Way
-  Route Alternative
-  Alignment Alternative

-  Route Alternative Width
-  Existing Transmission Line
-  Iron Range Substation

-  Native Plant Community
- Site of Biodiversity Significance**
-  High Significance
-  Moderate Significance

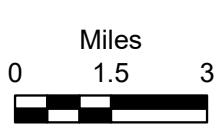


Map 51-1
SENSITIVE ECOLOGICAL RESOURCES
 Iron Range Substation Region
 Northland Reliability Project



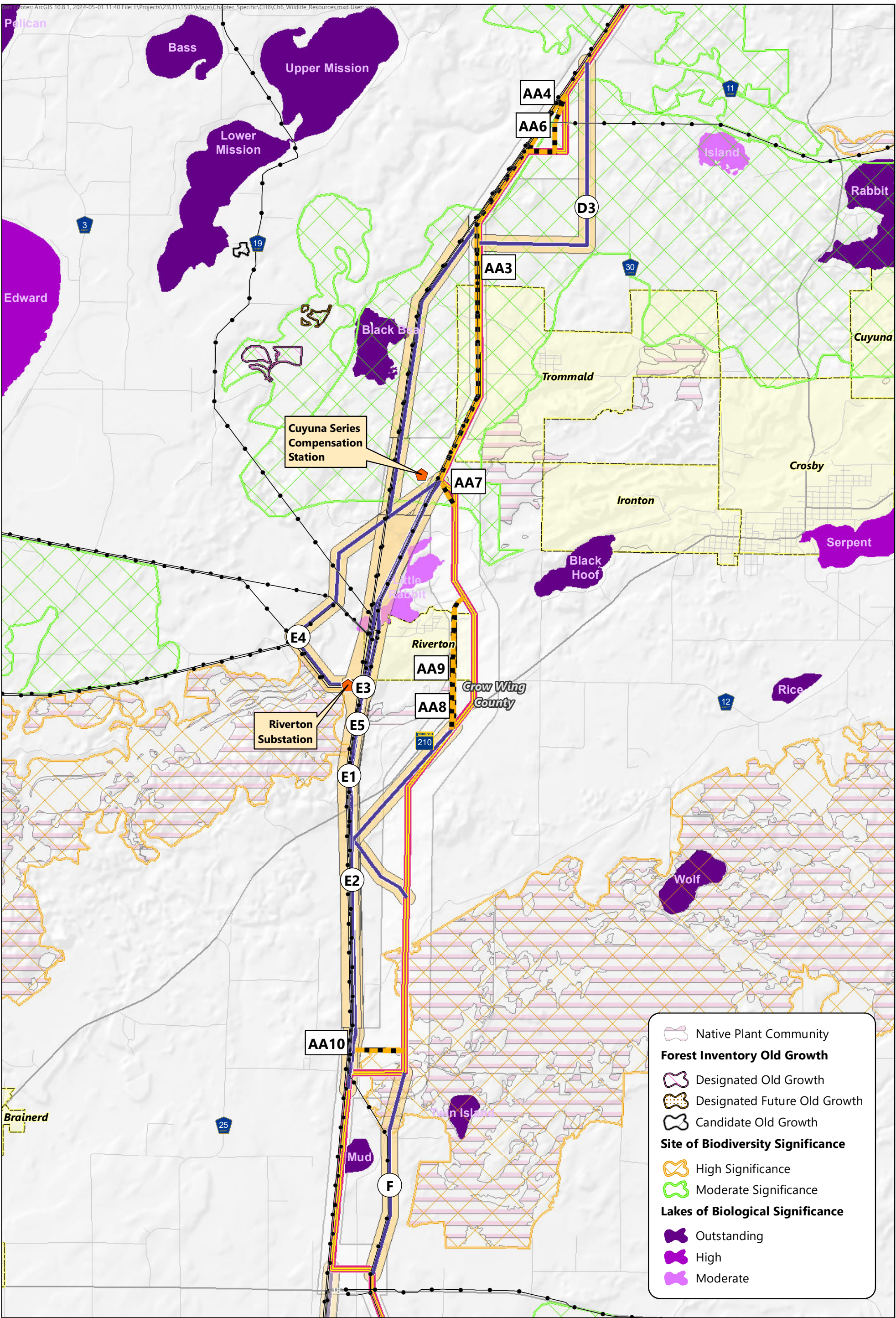
	High Conservation Value Forest
	Native Plant Community
Forest Inventory Old Growth	
	Designated Old Growth
	Designated Future Old Growth
	Candidate Old Growth
Site of Biodiversity Significance	
	Outstanding Significance
	High Significance
	Moderate Significance
Lakes of Biological Significance	
	Outstanding
	High
	Moderate

	Applicants' Proposed Route		Route Alternative Width
	Route Width		Existing Transmission Line
	Applicants' Proposed Right of Way		Municipal Boundary
	Route Alternative		
	Alignment Alternative		



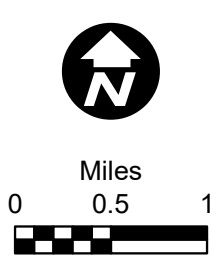
Map 51-2

SENSITIVE ECOLOGICAL RESOURCES
Hill City to Little Pine Region
Northland Reliability Project



- Applicants' Proposed Route
- Route Width
- Applicants' Proposed Right of Way
- Route Alternative
- Alignment Alternative
- Route Alternative Width

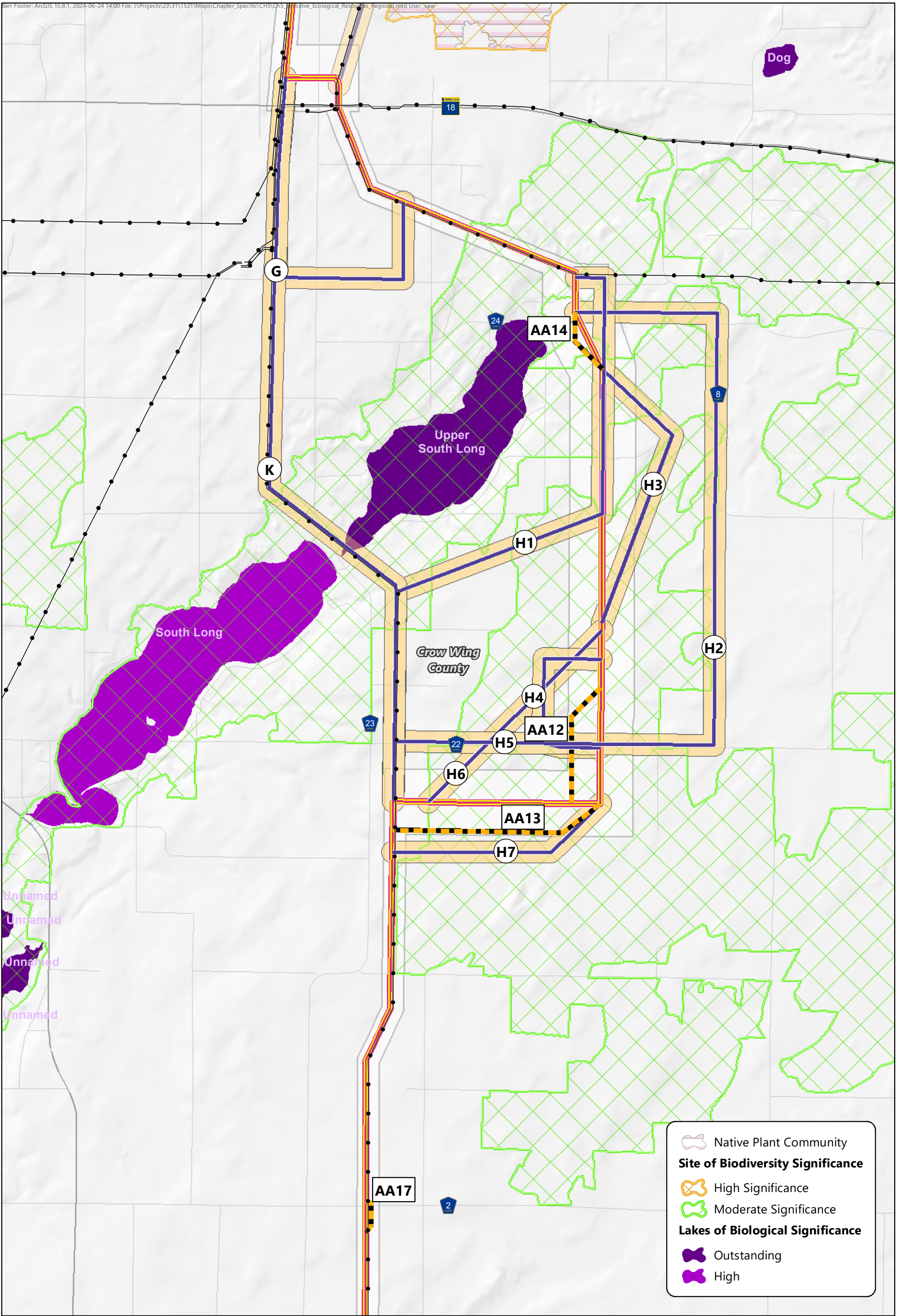
- Existing Transmission Line
- Riverton Substation
- Cuyuna Series Compensation Station
- Municipal Boundary



- Native Plant Community
- Forest Inventory Old Growth**
 - Designated Old Growth
 - Designated Future Old Growth
 - Candidate Old Growth
- Site of Biodiversity Significance**
 - High Significance
 - Moderate Significance
- Lakes of Biological Significance**
 - Outstanding
 - High
 - Moderate

Map 51-3

SENSITIVE ECOLOGICAL RESOURCES
 Cole Lake/Riverton Region
 Northland Reliability Project



Native Plant Community

Site of Biodiversity Significance

- High Significance
- Moderate Significance

Lakes of Biological Significance

- Outstanding
- High

- Applicants' Proposed Route
- Route Width
- Applicants' Proposed Right of Way
- Route Alternative
- Alignment Alternative
- Route Alternative Width
- Existing Transmission Line

North Arrow

Feet

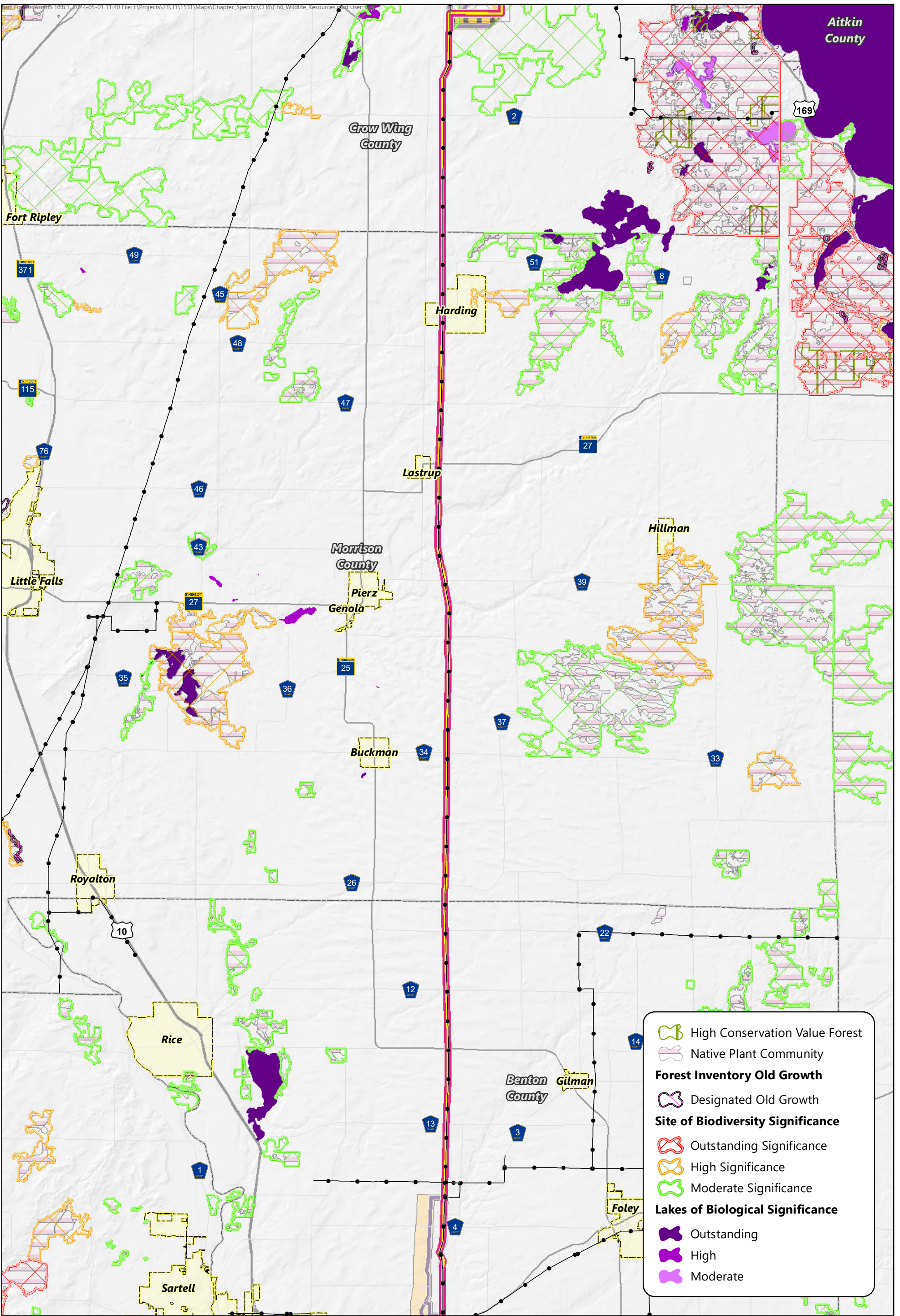
0 2,000 4,000









Map 5I-4










SENSITIVE ECOLOGICAL RESOURCES

Long Lake Region

Northland Reliability Project



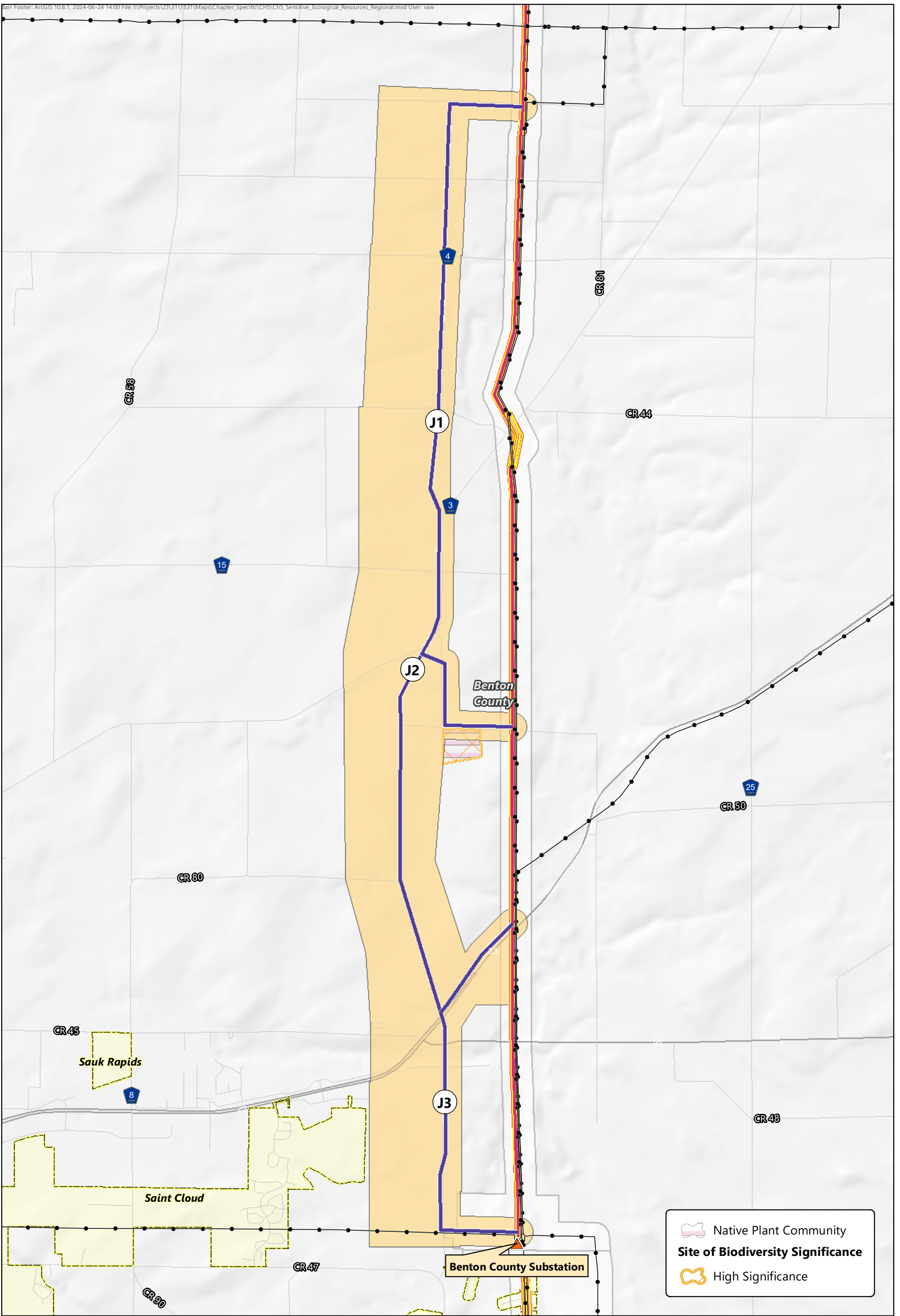
-  Applicants' Proposed Route
-  Route Width
-  Applicants' Proposed Right of Way
-  Route Alternative
-  Alignment Alternative
-  Route Alternative Width
-  Existing Transmission Line
-  Municipal Boundary

-  High Conservation Value Forest
-  Native Plant Community
- Forest Inventory Old Growth**
-  Designated Old Growth
- Site of Biodiversity Significance**
-  Outstanding Significance
-  High Significance
-  Moderate Significance
- Lakes of Biological Significance**
-  Outstanding
-  High
-  Moderate



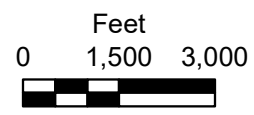
Map 51-5

SENSITIVE ECOLOGICAL RESOURCES
Morrison County Region
Northland Reliability Project



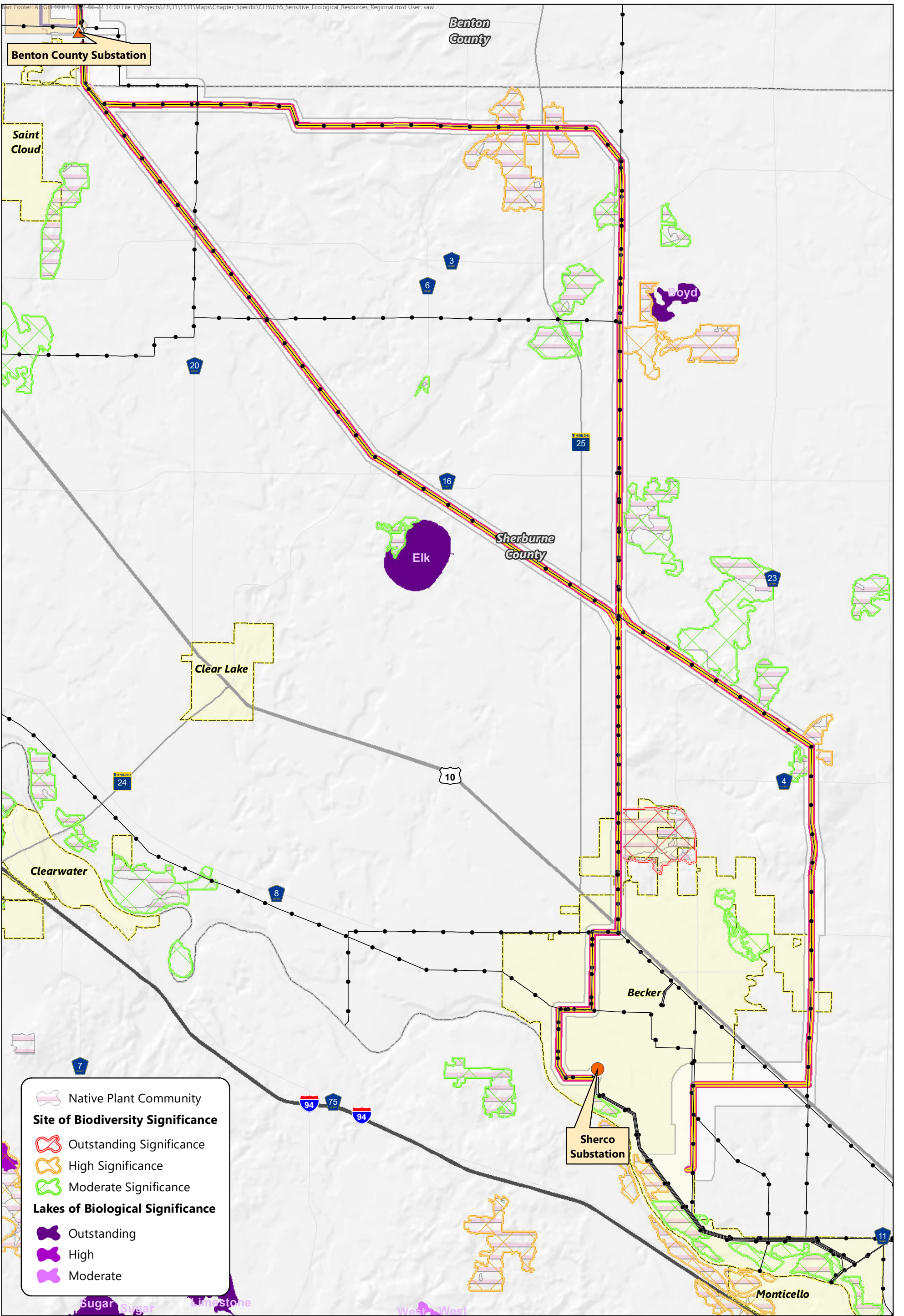
- Applicants' Proposed Route
- Route Width
- Applicants' Proposed Right of Way
- Route Alternative
- Alignment Alternative

- Route Alternative Width
- Existing Transmission Line
- Benton County Substation
- Municipal Boundary



- Native Plant Community
- Site of Biodiversity Significance
- High Significance

Map 51-6
SENSITIVE ECOLOGICAL RESOURCES
Benton County Elk River Region
Northland Reliability Project



Native Plant Community

Site of Biodiversity Significance

- Outstanding Significance
- High Significance
- Moderate Significance

Lakes of Biological Significance

- Outstanding
- High
- Moderate

- Applicants' Proposed Route
- Route Width
- Applicants' Proposed Right of Way
- Route Alternative
- Alignment Alternative

- Route Alternative Width
- Existing Transmission Line
- Benton County Substation
- Sherco Substation
- Municipal Boundary

Feet

0 3,000 6,000

Map 51-7

SENSITIVE ECOLOGICAL RESOURCES
 Sherburne County Region
 Northland Reliability Project