

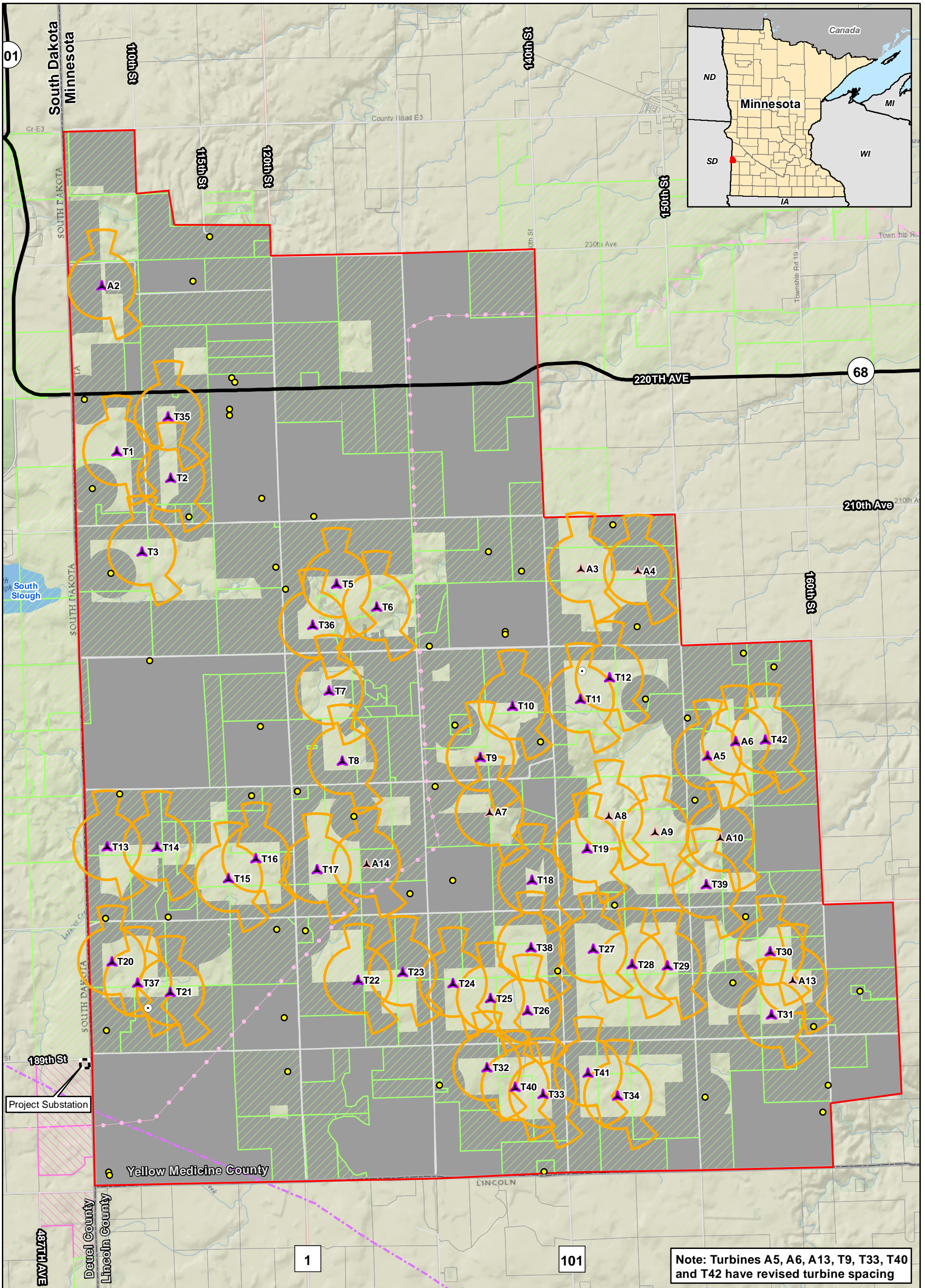
Data Source: RES Americas, USGS  
 Imagery Source: Copyright © 2013 National Geographic Society, i-cubed

**Figure 1**  
**Project Location**

**Bitter Root Wind Farm**  
**Flying Cow Wind, LLC**  
**Yellow Medicine County, Minnesota**

**Updated 3/28/2018**

- Project Area
- County Boundary
- City/Township



Note: Turbines A5, A6, A13, T9, T33, T40 and T42 have revised turbine spacing

RES AMERICAS  
powering change®

0 0.25 0.5 1 Miles

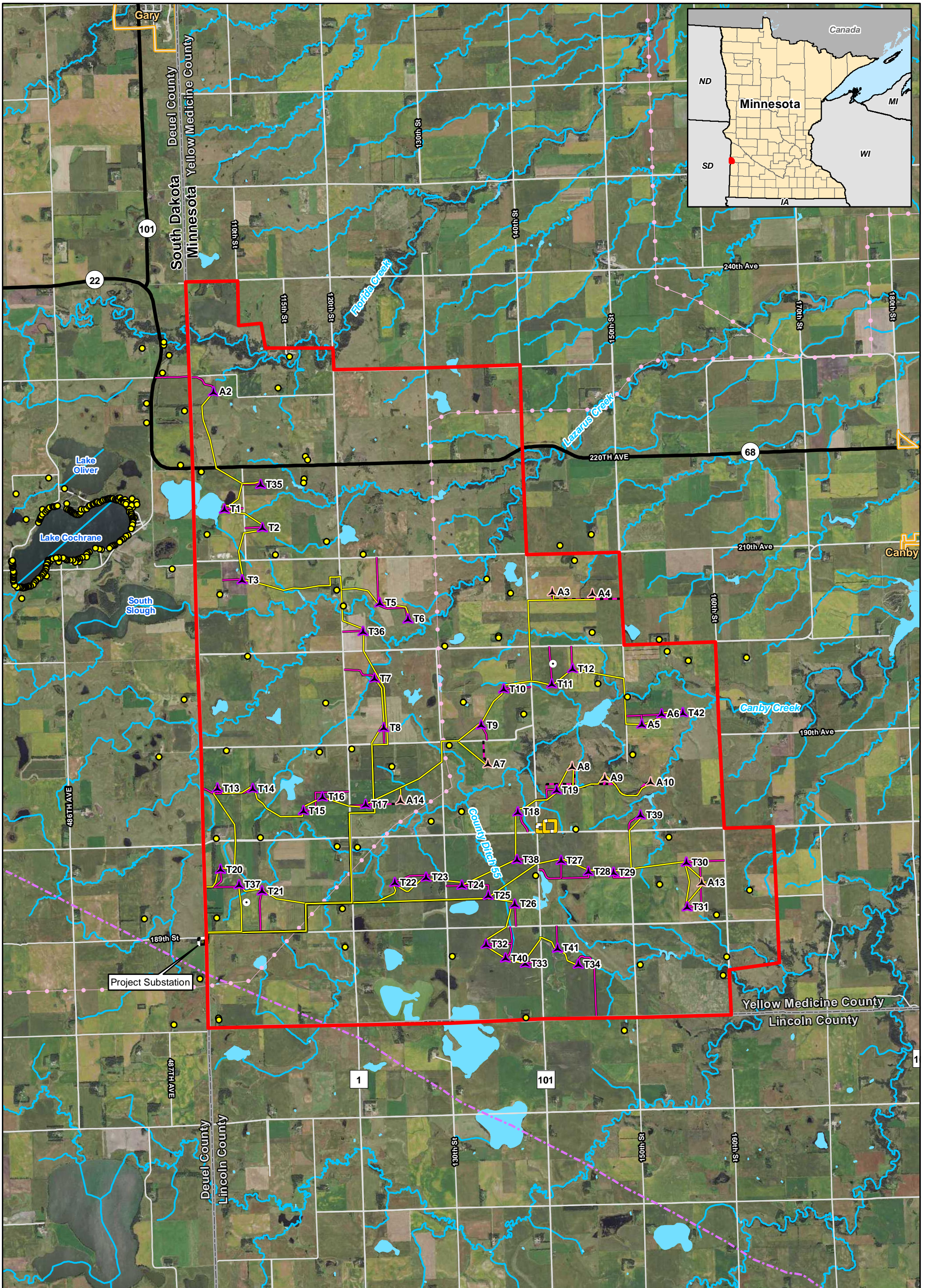
Data Source: RES Americas, USGS, MN DNR  
Imagery Source: National Geographic World Map

**Figure 2**  
**Turbine Layout and Constraints**

**Bitter Root Wind Farm**  
**Flying Cow Wind, LLC**  
**Yellow Medicine County, Minnesota**

**Updated 3/28/2018**

- Proposed Turbine
  - Proposed Alternate Turbine
  - Project Area
  - 3x5 Wind Access Buffer
  - Project Substation
  - Setbacks
  - Proposed Met Tower
  - Receptors within 10 Tip Heights of Proposed Turbines
  - Existing 115 kV Transmission Line
  - Existing Pipeline
- Status**
- Participants
  - Negotiating
  - Non-Participants
- \* Turbines are not to scale



**Figure 3a  
Project Area and Facilities**

**Bitter Root Wind Farm  
Flying Cow Wind, LLC  
Yellow Medicine County, Minnesota**

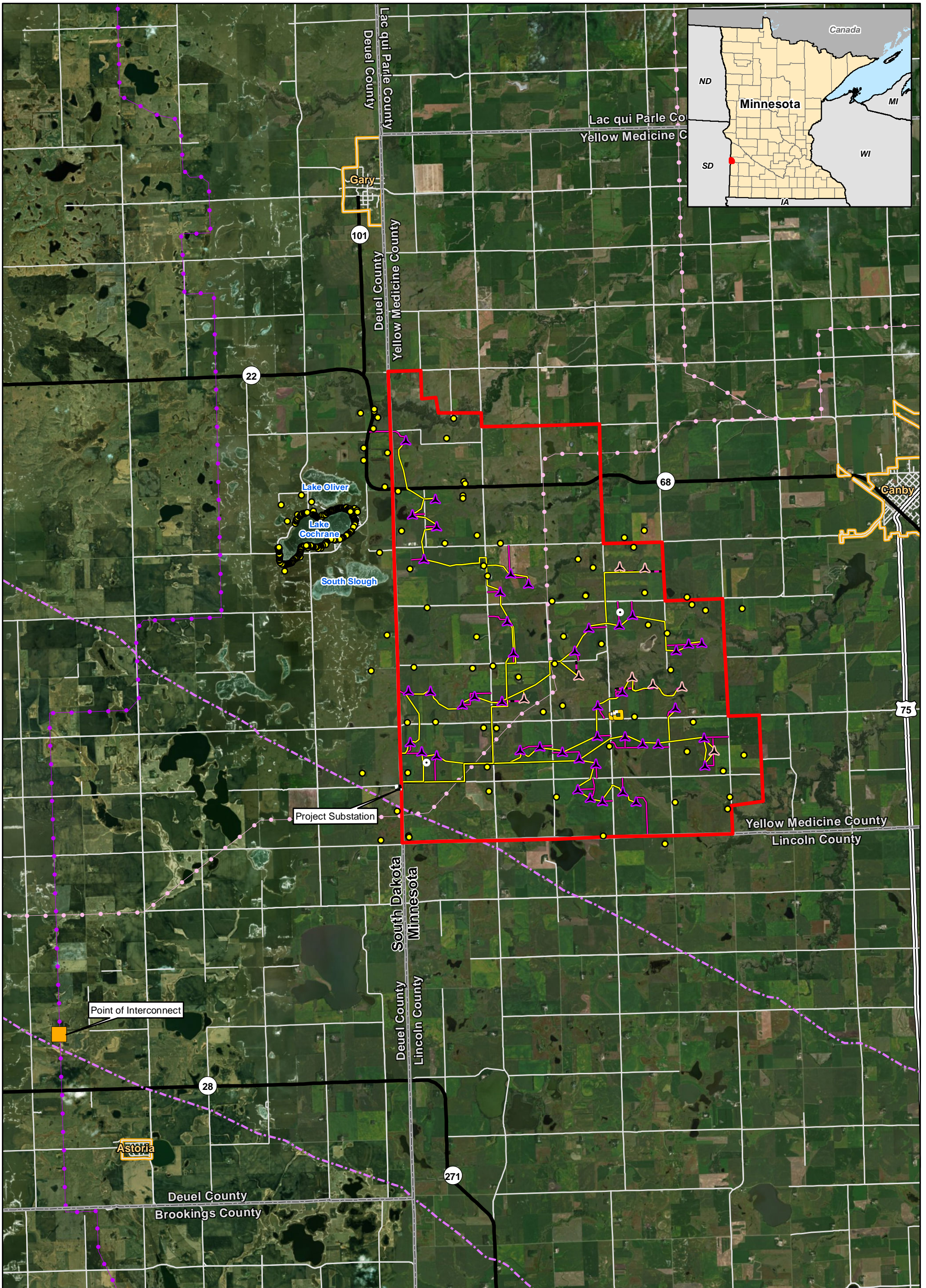
**Updated 3/28/2018**



0 0.25 0.5 1 Miles

Data Source: RES Americas, USGS, MNDOC, MNDNR  
Imagery Source: 2015 Color FSA

- Proposed Turbine
- Proposed Alternate Turbine
- Proposed Met Tower
- Receptors within 10 Tip Heights of Proposed Turbines
- Project Area
- Proposed Facilities Boundary (OM Building and Laydown Yard)
- Project Substation
- Proposed Collection Line
- Proposed Access Road
- Proposed Alternate Access Road
- Lake, Pond or Reservoir
- 24k Stream or Ditch
- Existing 115 kV Transmission Line
- Existing Pipeline



**Figure 3b**  
**Project Area and Facilities and Transmission**  
**Point of Interconnect**

**Bitter Root Wind Farm**  
**Flying Cow Wind, LLC**  
**Yellow Medicine County, Minnesota**

Updated 3/28/2018

- |   |                                     |
|---|-------------------------------------|
| ▲ Proposed Turbine  | ■ Point of Interconnect             |
| ▲ Proposed Alternate Turbine                                  | — Proposed Collection Line          |
| ○ Proposed Met Tower  | — Proposed Access Road              |
| ● Receptors within 10 Tip Heights of Proposed Turbines        | — Proposed Alternate Access Road    |
| ■ Project Area  | — Existing 115 kV Transmission Line |
| ■ Proposed Facilities Boundary (OM Building and Laydown Yard) | — Existing 345 kV Transmission Line |
| ■ Project Substation  | — Existing Pipeline                 |



0 0.75 1.5 Miles

Data Source: RES Americas, USGS, MNDNR, MNDNR  
 Imagery Source: 2015 Color FSA