

Appendix H

EJ Screen Community Report

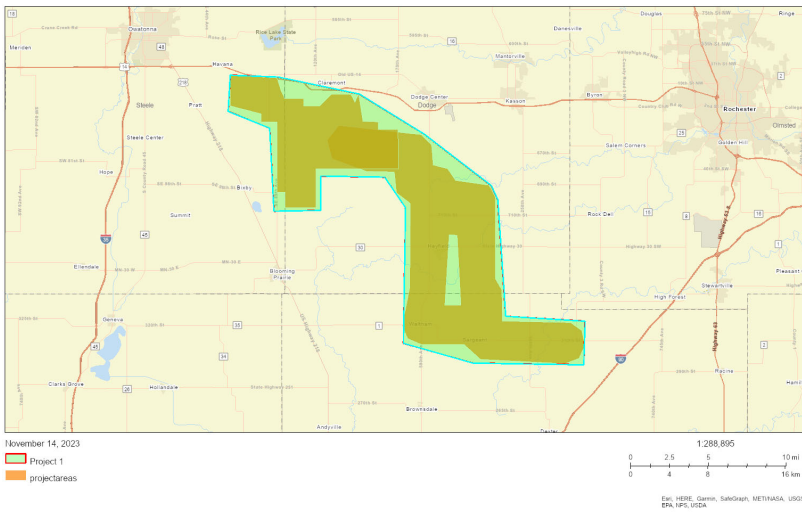
EJScreen Community Report

This report provides environmental and socioeconomic information for user-defined areas, and combines that data into environmental justice and supplemental indexes.

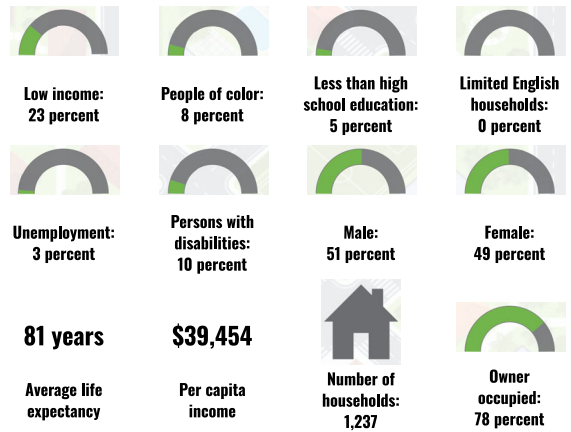
Dodge County, MN

the User Specified Area
Population: 3,025
Area in square miles: 157.48

A3 Landscape



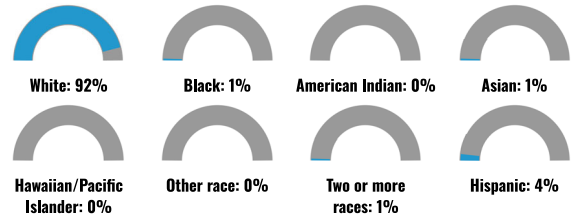
COMMUNITY INFORMATION



LANGUAGES SPOKEN AT HOME

LANGUAGE	PERCENT
English	92%
Spanish	6%
German or other West Germanic	1%
Total Non-English	8%

BREAKDOWN BY RACE



BREAKDOWN BY AGE



LIMITED ENGLISH SPEAKING BREAKDOWN



Notes: Numbers may not sum to totals due to rounding. Hispanic population can be of any race. Source: U.S. Census Bureau, American Community Survey (ACS) 2017-2021. Life expectancy data comes from the Centers for Disease Control.

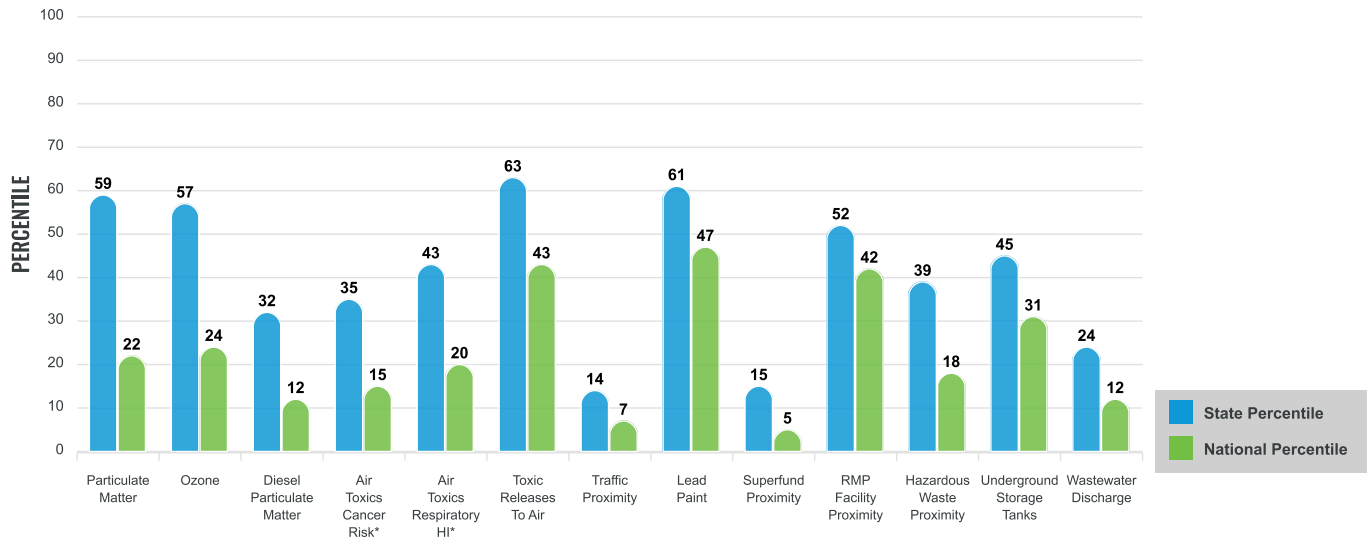
Environmental Justice & Supplemental Indexes

The environmental justice and supplemental indexes are a combination of environmental and socioeconomic information. There are thirteen EJ indexes and supplemental indexes in EJScreen reflecting the 13 environmental indicators. The indexes for a selected area are compared to those for all other locations in the state or nation. For more information and calculation details on the EJ and supplemental indexes, please visit the [EJScreen website](#).

EJ INDEXES

The EJ indexes help users screen for potential EJ concerns. To do this, the EJ index combines data on low income and people of color populations with a single environmental indicator.

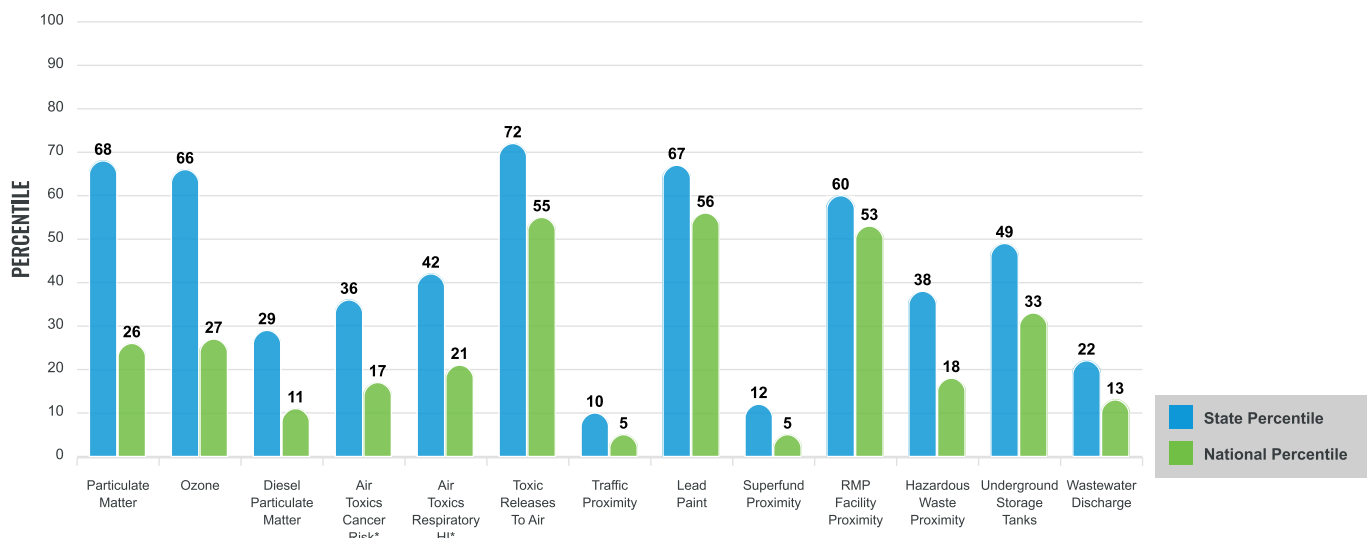
EJ INDEXES FOR THE SELECTED LOCATION



SUPPLEMENTAL INDEXES

The supplemental indexes offer a different perspective on community-level vulnerability. They combine data on percent low-income, percent linguistically isolated, percent less than high school education, percent unemployed, and low life expectancy with a single environmental indicator.

SUPPLEMENTAL INDEXES FOR THE SELECTED LOCATION



These percentiles provide perspective on how the selected block group or buffer area compares to the entire state or nation.

Report for the User Specified Area

EJScreen Environmental and Socioeconomic Indicators Data

SELECTED VARIABLES	VALUE	STATE AVERAGE	PERCENTILE IN STATE	USA AVERAGE	PERCENTILE IN USA
POLLUTION AND SOURCES					
Particulate Matter ($\mu\text{g}/\text{m}^3$)	7.28	6.78	57	8.08	27
Ozone (ppb)	58.8	58.2	60	61.6	30
Diesel Particulate Matter ($\mu\text{g}/\text{m}^3$)	0.0886	0.21	22	0.261	12
Air Toxics Cancer Risk* (lifetime risk per million)	18	22	0	25	1
Air Toxics Respiratory HI*	0.21	0.26	7	0.31	4
Toxic Releases to Air	1,400	1,500	70	4,600	66
Traffic Proximity (daily traffic count/distance to road)	3	140	13	210	8
Lead Paint (% Pre-1960 Housing)	0.46	0.33	69	0.3	70
Superfund Proximity (site count/km distance)	0.012	0.19	12	0.13	6
RMP Facility Proximity (facility count/km distance)	0.26	0.48	55	0.43	64
Hazardous Waste Proximity (facility count/km distance)	0.15	1.3	36	1.9	27
Underground Storage Tanks (count/km ²)	0.41	1.8	46	3.9	37
Wastewater Discharge (toxicity-weighted concentration/m distance)	0.013	0.19	89	22	69
SOCIOECONOMIC INDICATORS					
Demographic Index	15%	22%	43	35%	21
Supplemental Demographic Index	10%	11%	54	14%	33
People of Color	8%	20%	34	39%	19
Low Income	23%	23%	56	31%	42
Unemployment Rate	3%	4%	48	6%	40
Limited English Speaking Households	0%	2%	0	5%	0
Less Than High School Education	5%	7%	56	12%	38
Under Age 5	4%	6%	36	6%	42
Over Age 64	20%	17%	66	17%	66
Low Life Expectancy	18%	17%	56	20%	36

*Diesel particulate matter, air toxics cancer risk, and air toxics respiratory hazard index are from the EPA's Air Toxics Data Update, which is the Agency's ongoing, comprehensive evaluation of air toxics in the United States. This effort aims to prioritize air toxics, emission sources, and locations of interest for further study. It is important to remember that the air toxics data presented here provide broad estimates of health risks over geographic areas of the country, not definitive risks to specific individuals or locations. Cancer risks and hazard indices from the Air Toxics Data Update are reported to one significant figure and any additional significant figures here are due to rounding. More information on the Air Toxics Data Update can be found at: <https://www.epa.gov/haps/air-toxics-data-update>.

Sites reporting to EPA within defined area:

Superfund	0
Hazardous Waste, Treatment, Storage, and Disposal Facilities	0
Water Dischargers	15
Air Pollution	6
Brownfields	1
Toxic Release Inventory	1

Other community features within defined area:

Schools	2
Hospitals	2
Places of Worship	6

Other environmental data:

Air Non-attainment	No
Impaired Waters	Yes

Selected location contains American Indian Reservation Lands*	No
Selected location contains a "Justice40 (CEJST)" disadvantaged community	No
Selected location contains an EPA IRA disadvantaged community	No

Report for the User Specified Area

EJScreen Environmental and Socioeconomic Indicators Data

HEALTH INDICATORS

INDICATOR	HEALTH VALUE	STATE AVERAGE	STATE PERCENTILE	US AVERAGE	US PERCENTILE
Low Life Expectancy	18%	17%	56	20%	36
Heart Disease	6.3	5.6	69	6.1	56
Asthma	8.8	9	34	10	17
Cancer	7.1	6.4	65	6.1	72
Persons with Disabilities	9.8%	11.4%	39	13.4%	31

CLIMATE INDICATORS

INDICATOR	HEALTH VALUE	STATE AVERAGE	STATE PERCENTILE	US AVERAGE	US PERCENTILE
Flood Risk	9%	8%	61	12%	60
Wildfire Risk	0%	4%	0	14%	0

CRITICAL SERVICE GAPS

INDICATOR	HEALTH VALUE	STATE AVERAGE	STATE PERCENTILE	US AVERAGE	US PERCENTILE
Broadband Internet	18%	11%	78	14%	70
Lack of Health Insurance	4%	5%	44	9%	25
Housing Burden	No	N/A	N/A	N/A	N/A
Transportation Access	Yes	N/A	N/A	N/A	N/A
Food Desert	No	N/A	N/A	N/A	N/A

Footnotes

Report for the User Specified Area