

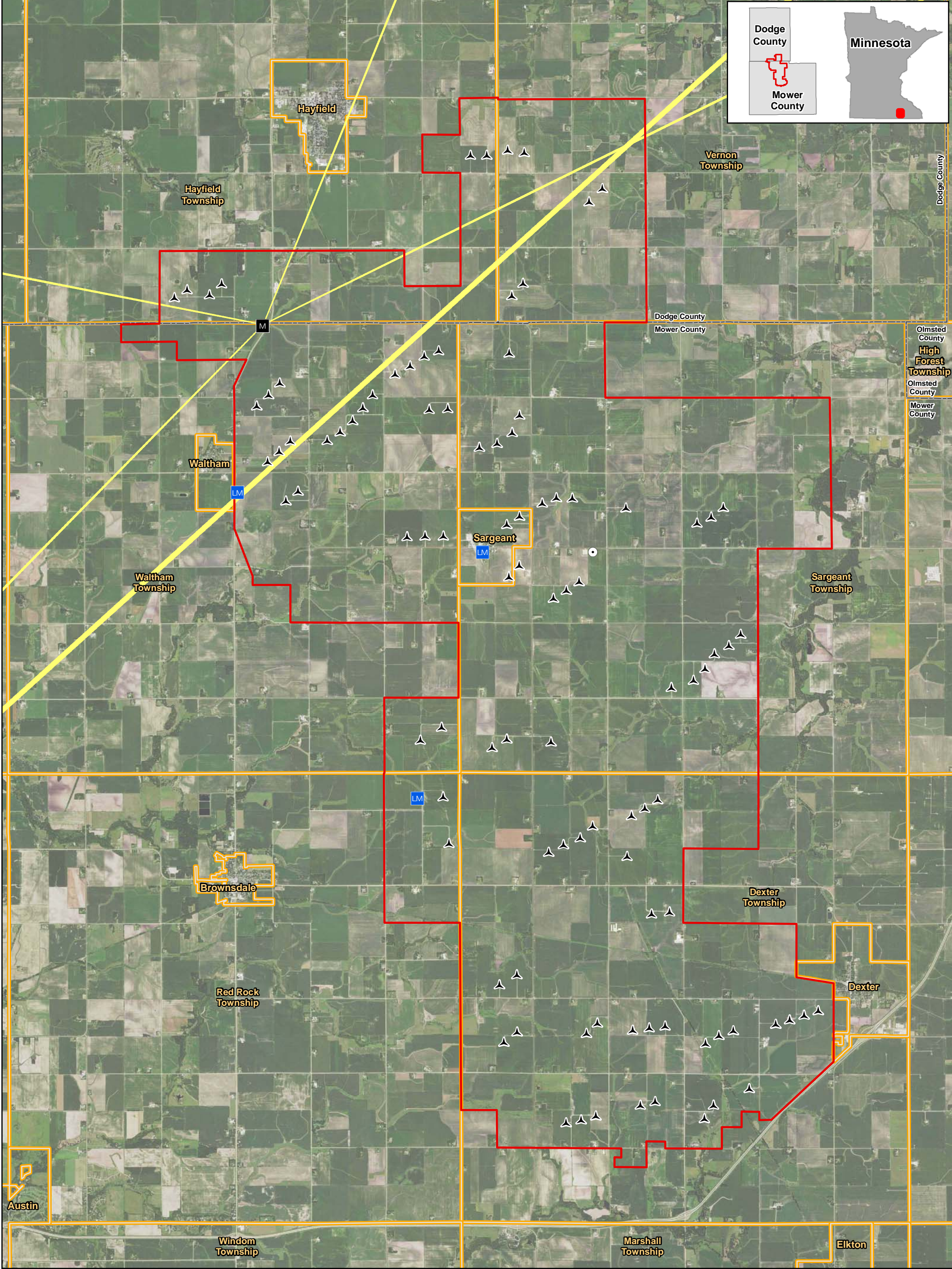
1:75,000

**Figure 9
Shadow Flicker
Pleasant Valley Wind Farm
Repower Project**

Mower and Dodge Counties, Minnesota

- | | | |
|---|--|-----------------------|
| ▲ | Turbine (110m rotor diameter) | Shadow Hours Per Year |
| ▲ | Existing Wind Project (within 2 miles of Project Boundary) | — 0 |
| ● | Residential Structure (within 2 miles of Project Boundary) | — 10 |
| □ | Project Boundary | — 20 |
| □ | County Boundary | — 30 |
| | | — 40 |
| | | — 50 |
| | | — 60 |

For Environmental Review Purposes Only
Data Source: Xcel Energy, US Census, MDOT, MDNR, 2019 NAIP



0 1 2 Miles

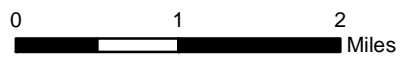
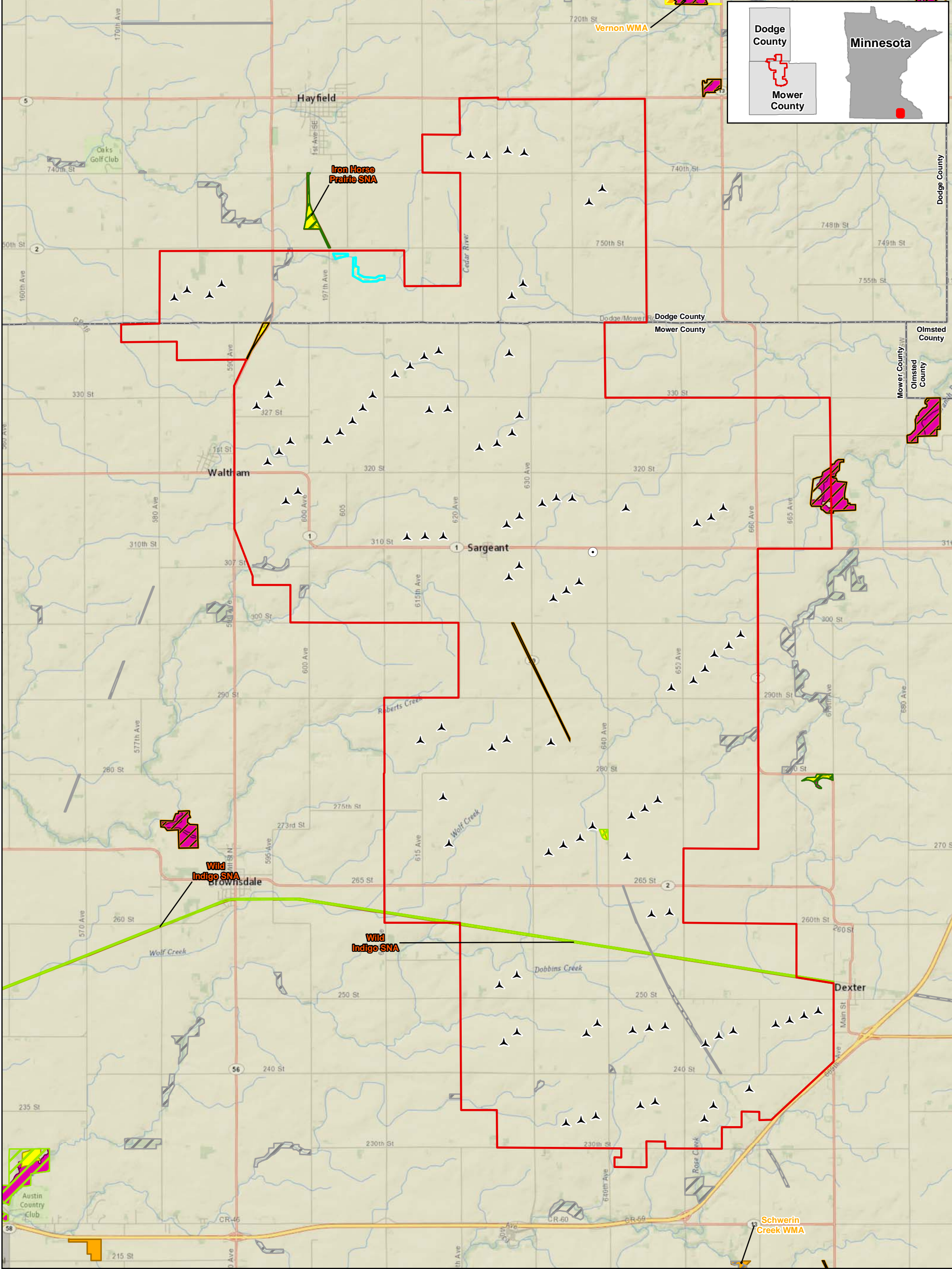
1:75,000

For Environmental Review Purposes Only
Data Source: Xcel Energy, US Census, MDOT, MDNR, 2019 NAIP

Figure 10
Microwave Beam Path
Pleasant Valley Wind Farm
Repower Project

Mower and Dodge Counties, Minnesota

- Turbine (110m rotor diameter)
- Met Tower
- Land Mobile
- Microwave Tower
- Project Boundary
- Microwave Beam Path
- City/Township
- County Boundary



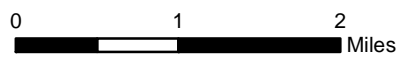
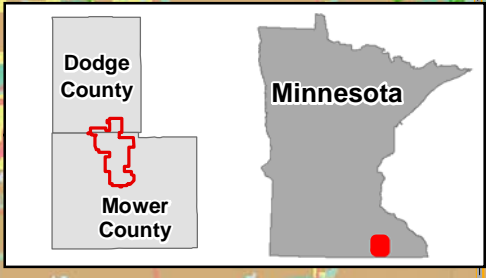
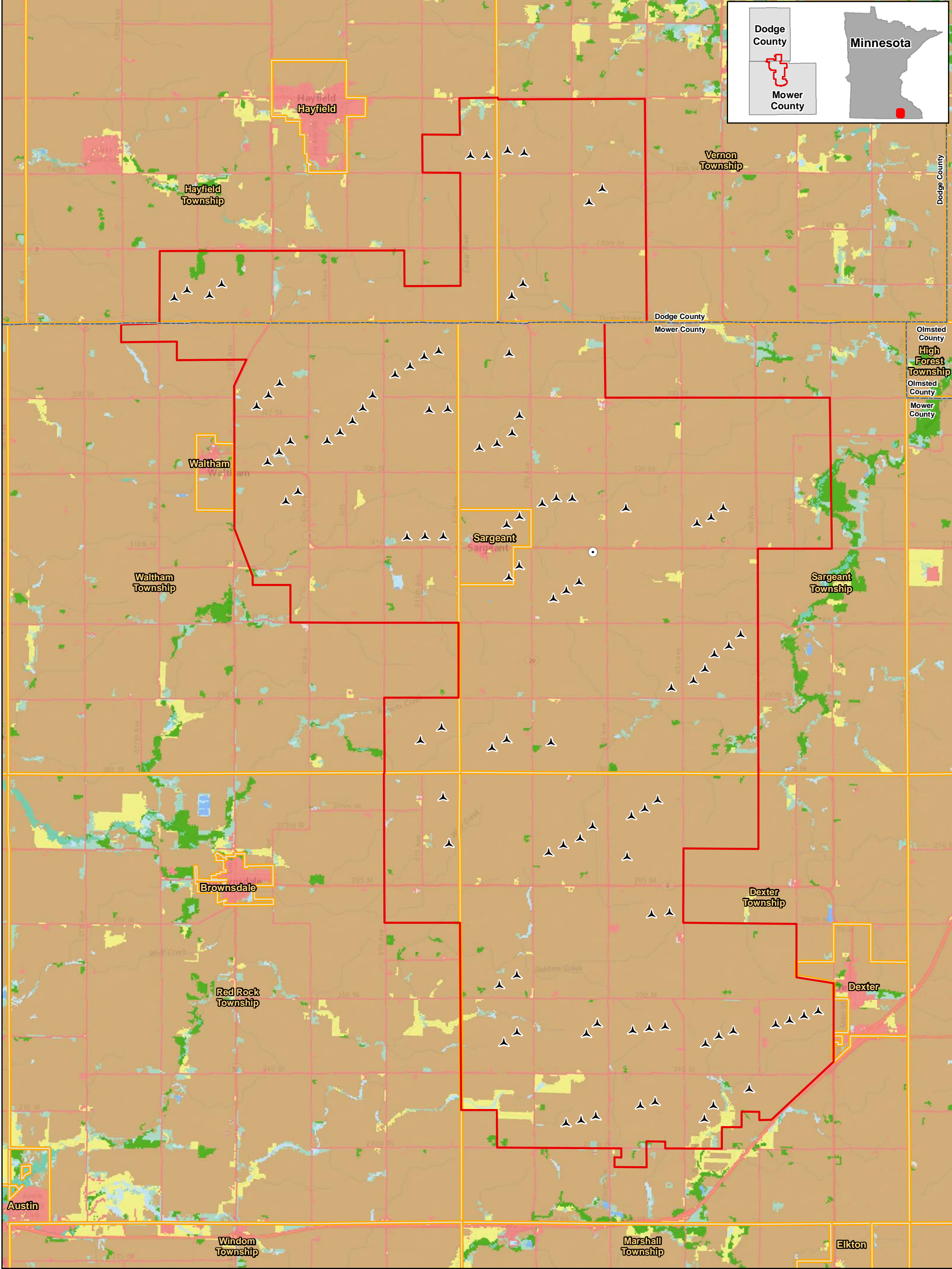
1:75,000

Figure 11
Rare and Unique Natural Features
Pleasant Valley Wind Farm
Repower Project

Mower and Dodge Counties, Minnesota

- | | | | |
|---|-------------------------------------|--|---|
| ▲ | Turbine (110m rotor diameter) | | Sites of Biodiversity Significance |
| | Project Boundary | | Outstanding |
| | Native Prairie | | High |
| | Native Plant Community | | Moderate |
| | US Fish and Wildlife Interest (FSA) | | Below |
| | Wildlife Management Area (WMA) | | |
| | Scientific & Natural Area (SNA) | | |
| | County Boundary | | |

For Environmental Review Purposes Only
 Data Source: Xcel Energy, US Census, MDT, MDNR, 2019 NAIP



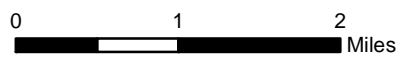
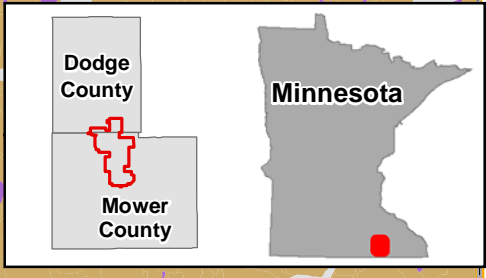
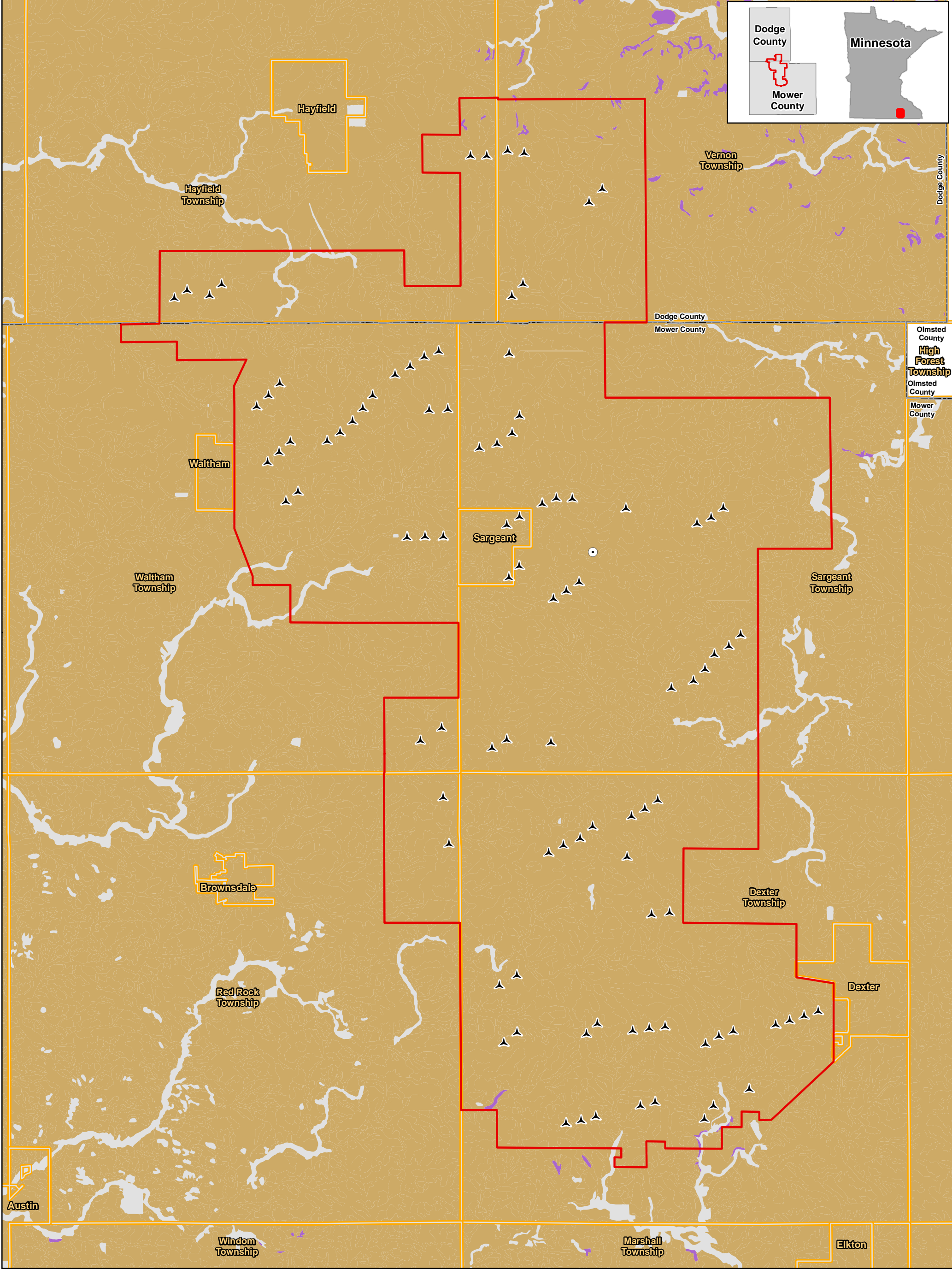
1:75,000

Figure 12
Land Cover
Pleasant Valley Wind Farm
Repower Project

Mower and Dodge Counties, Minnesota

- | | |
|---------------------------------|-----------------------------------|
| ▲ Turbine (110m rotor diameter) | NLCD Land Cover |
| ▭ Project Boundary | ▭ Barren Land |
| ▭ City/Township | ▭ Cultivated Crops |
| ▭ County Boundary | ▭ Forested (All Categories) |
| | ▭ Developed Land (All Categories) |
| | ▭ Emergent Herbaceous Wetlands |
| | ▭ Hay/Pasture |
| | ▭ Herbaceous |
| | ▭ Open Water |
| | ▭ Woody Wetlands |

For Environmental Review Purposes Only
 Data Source: Xcel Energy, US Census, MDT, MDNR, 2019 NAIP



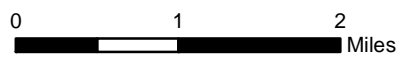
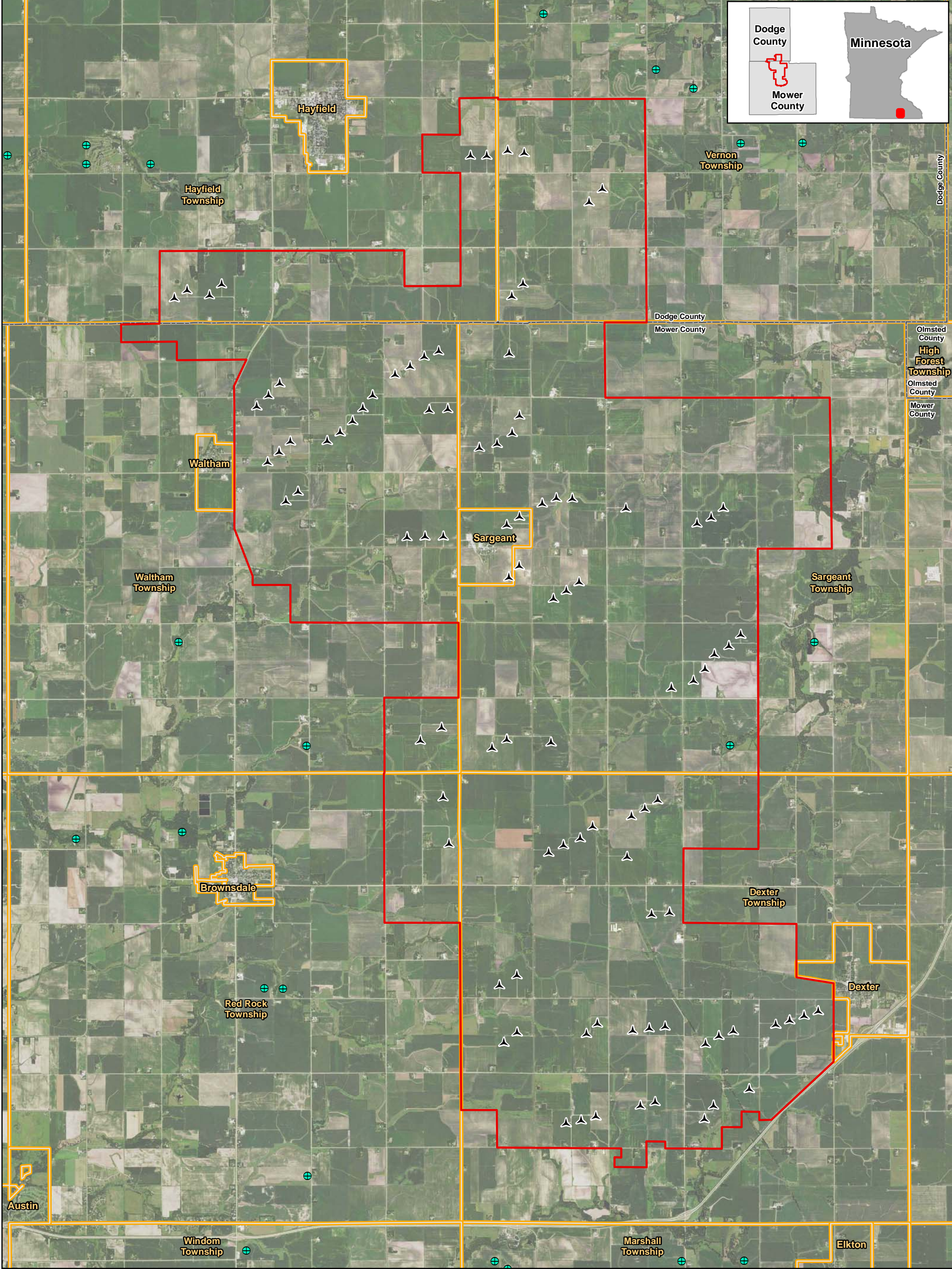
1:75,000

Figure 13
Soils
Pleasant Valley Wind Farm
Repower Project

Mower and Dodge Counties, Minnesota

- ▲ Turbine (110m rotor diameter)
- ▭ Project Boundary
- ▭ City/Township
- ▭ County Boundary
- Farmland Classification**
- Prime Farmland
- Farmland of Statewide Importance
- Not Prime Farmland

For Environmental Review Purposes Only
 Data Source: Xcel Energy, US Census, MDT, MDNR, 2019 NAIP

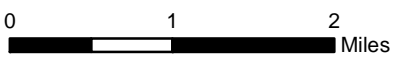
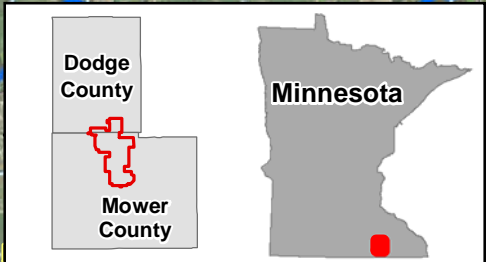
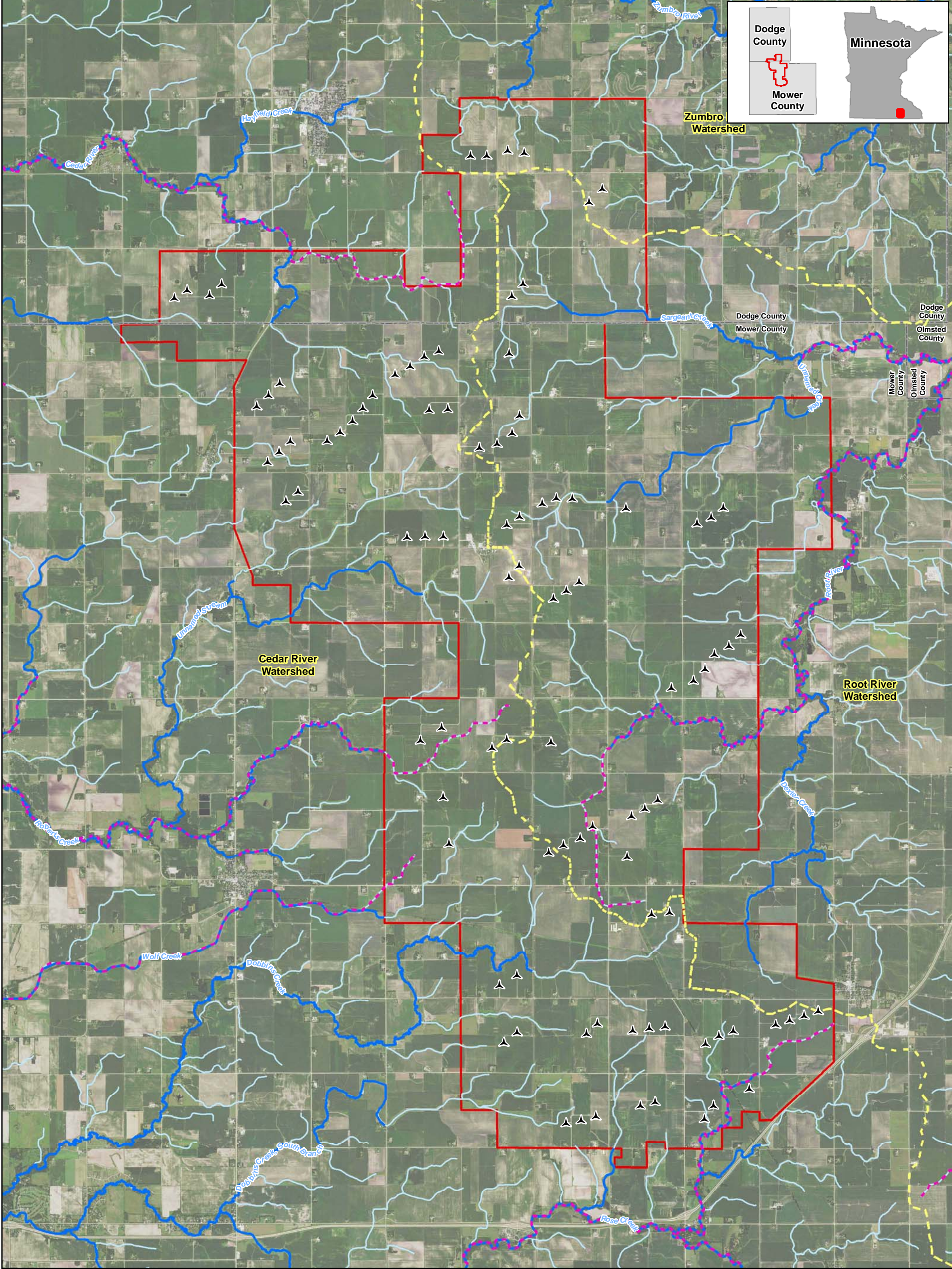


1:75,000

**Figure 14
Geology
Pleasant Valley Wind Farm
Repower Project**

Mower and Dodge Counties, Minnesota

- ▲ Turbine (110m rotor diameter)
- ⊕ Mining Operation
- ▭ Project Boundary
- ▭ City/Township
- ▭ County Boundary



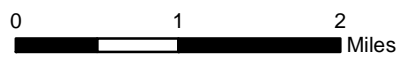
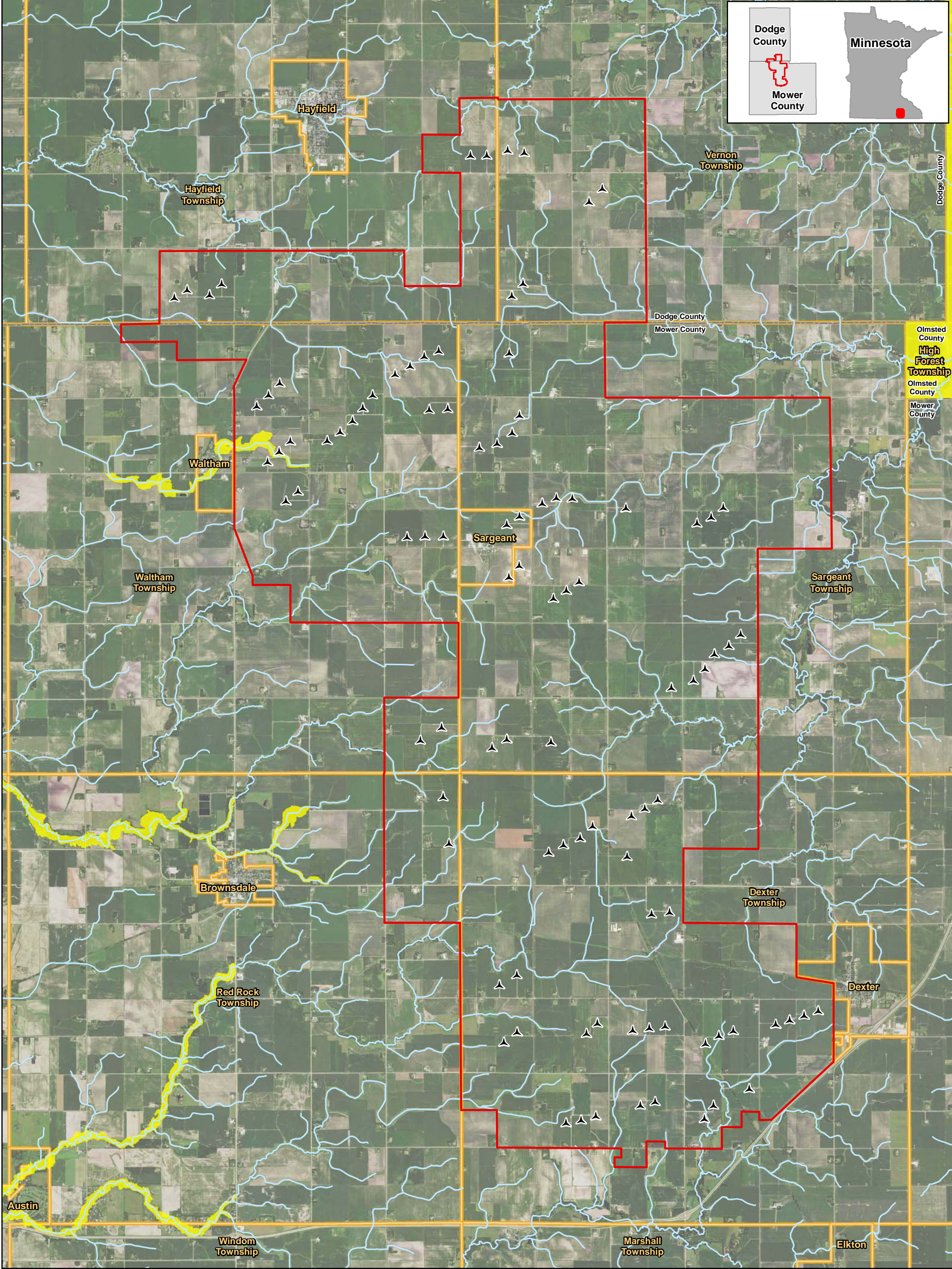
1:75,000

Figure 15
Surface Water
Pleasant Valley Wind Farm
Repower Project

Mower and Dodge Counties, Minnesota

- Turbine (110m rotor diameter)
- Project Boundary
- Impaired Stream
- Public Water Watercourse
- 24K Stream or Ditch
- HUC 8 Watershed
- County Boundary

For Environmental Review Purposes Only
 Data Source: Xcel Energy, US Census, MDOT, MDNR, 2019 NAIP

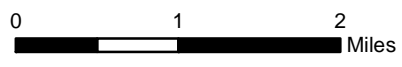
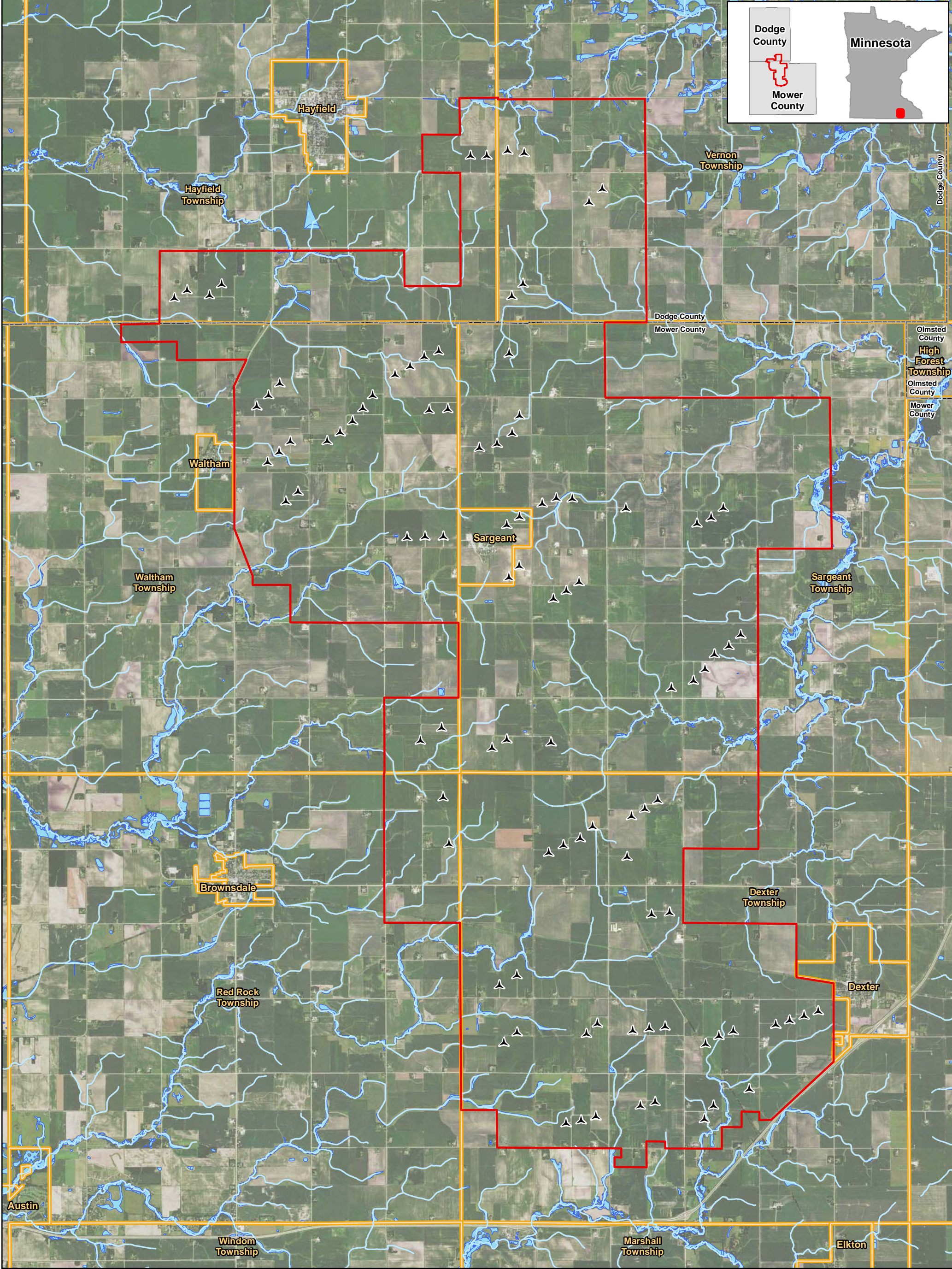


1:75,000

**Figure 16
FEMA Floodplain
Pleasant Valley Wind Farm
Repower Project**

Mower and Dodge Counties, Minnesota

- Turbine (110m rotor diameter)
- Project Boundary
- River/Stream
- 100 Year Floodplain
- City/Township
- County Boundary



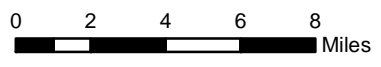
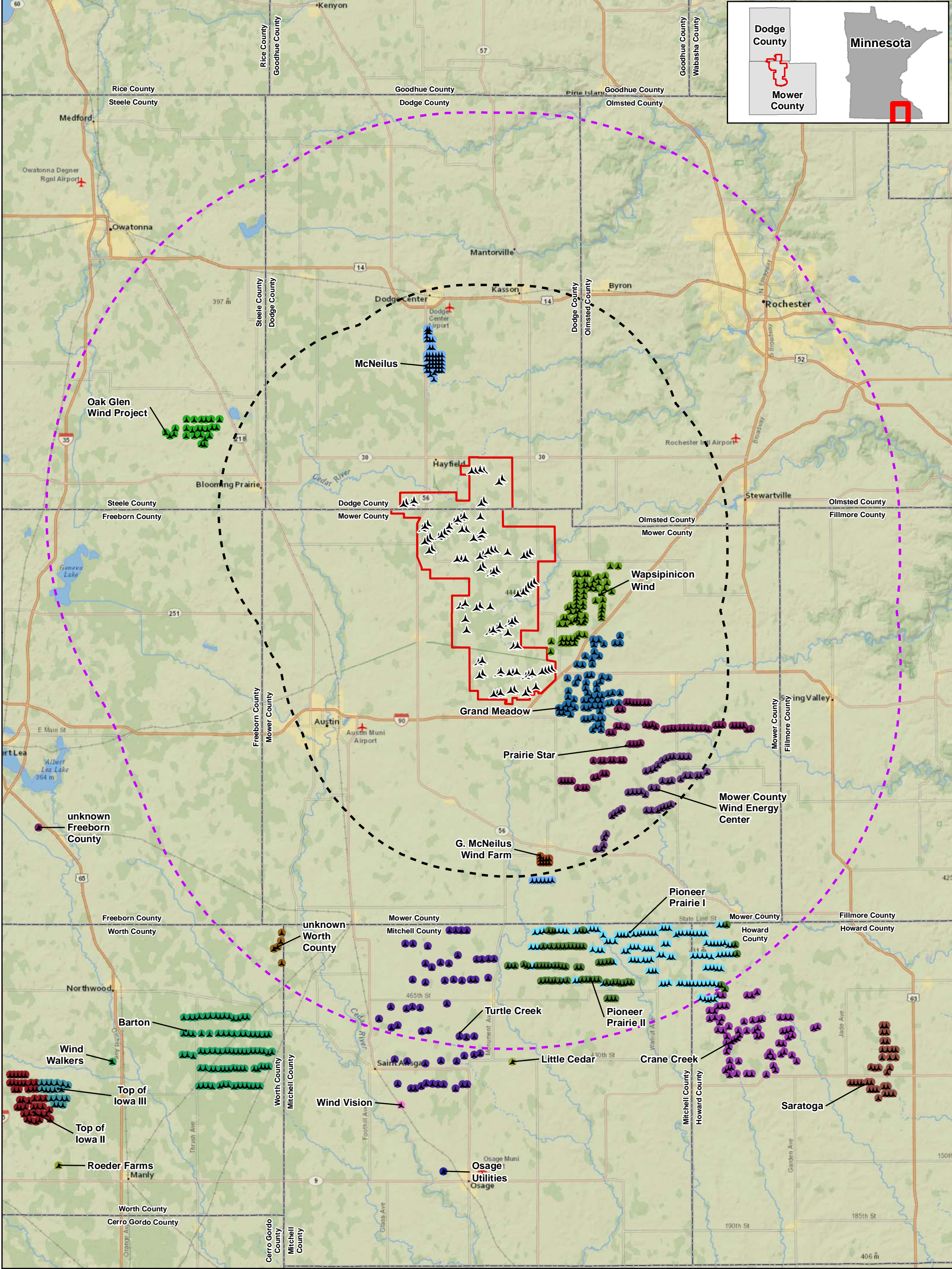
1:75,000

Figure 17
Wetlands Inventory Map
Pleasant Valley Wind Farm
Repower Project

Mower and Dodge Counties, Minnesota

- Turbine (110m rotor diameter)
- Project Boundary
- River/Stream
- NWI (MNDNR Update)
- City/Township
- County Boundary






For Environmental Review Purposes Only
 Data Source: Xcel Energy, US Census, MDT, MDNR, 2019 NAIP



1:325,000

Figure 18
Existing Turbine Locations
Pleasant Valley Wind Farm
Repower Project

Mower and Dodge Counties, Minnesota

-  Turbine
-  Project Boundary
-  10-Mile Buffer
-  20-Mile Buffer
-  County Boundary

For Environmental Review Purposes Only
 Data Source: Xcel Energy, US Census, MDOT, MDNR, 2019 NAIP