

In the Matter of the Application for a Route Permit for the Big Stone South to Alexandria 345-kV Transmission Project in West-Central Minnesota

PUC Docket No. E017, ET10/TL-23-160

Commissioner Tuma Decision Options

Tuma Decision Option 3:

A. Not less than 14 days before the first public meeting the Permittee shall file in the record a detailed plan on how it will meet its statutory obligation to provide relocation assistance, services, payments and benefits under Minn Stat section 117.187 (Minimum Compensation) and Minn. Stat. section 117.52 (Relocation Assistance) for those landowners who provide notice of their option to exercise rights under Minn. Stat. section 216I.21 (Buy the Farm).

This plan shall include an accurate fact sheet to be provided to landowners describing:

1. That the Permittee will attempt to negotiate a voluntary easement acquisition and attempt to minimize impacts to properties;
2. That if the landowner is not satisfied with the resulting impacts, the landowner has the option under Minn. Stat. section 216I.21, subd. 4 to require the utility to purchase contiguous, commercially viable land that the landowner owns;
3. The timing for exercising those rights;
4. The relocation benefits to which a landowner is entitled under Minnesota Law, including but not limited to, advisory services; and
5. The specific process for contacting the Permittee to receive assistance.

B. Amend draft permit paragraph 5.1 regarding the route permit distribution to landowners to require the Permittee to also provide to landowners:

1. An accurate fact sheet describing:
 - a. That the Permittee will attempt to negotiate a voluntary easement acquisition and attempt to minimize impacts to properties;
 - b. That if the landowner is not satisfied with the resulting impacts, the landowner has the option under Minn. Stat. section 216I.21, subd. 4 to require the utility to purchase contiguous, commercially viable land that the landowner owns;
 - c. The timing for exercising those rights;
 - d. The relocation benefits to which a landowner is entitled to under Minnesota Law, including but not limited to advisory services, and

e. The specific process for contacting the Permittee to receive assistance

2. The anticipated date (or date range, if done in segments) that the landowner would receive the Notice of the Objects of the Petition as required by the eminent domain law if negotiations to acquire the property voluntarily are not successful;

3. Contact information for:

a. the specific land agents of the Permittee who will be working with the specific landowners receiving the notice who will provide assistance to minimize impacts on properties where Minn. Stat. section 216L.21, subd. 4 was not exercised; and

b. the specific land agents who will provide the statutory assistance required under Minn. Stat. sections 216L.21, subd. 4 and 117.52, if a landowner exercises this right.

C. Amend the draft permit to require that the plan and profile may not be filed for consideration until 90 days after the Notice of the Objects of the Petition has been served on the landowners in the route segment covered by the specific plan and profile. The plan and profile shall include a description of the properties where landowners have exercised their rights under Minn. Stat. section 216L.21 and what modifications, if any, to the plan and profile resulted from the exercising of these rights.

Tuma Decision Option 4:

Amend the draft permit section regarding grounding to require the Permittee to provide education materials on appropriate grounding of structures and operation of equipment near the powerline to all landowners with permanent metal structures and irrigation systems within 1000 feet of the alignment. Content of the educational materials shall be developed in the Agricultural Impact Mitigation Plan and must include contact information for a representative of the Permittee who will work with landowners to monitor and obtain appropriate grounding to ensure that the powerline operation stays within the induced steady-state short-circuit current requirements during operation. The material shall also note that this grounding and monitoring is at the Permittee's expense.

Tuma Decision Option 5:

The EIS shall identify and analyze a co-location maximization route in each section that is the most direct and maximizes routes located along existing transmission lines, state highways, county roads and railroads.

Tuma Decision Option 6:

The EIS shall analyze the following alternative routes:

Tuma Route Alternative 1 (South; connecting to S210 Alternative): Where the existing 115 kV line crosses Highway 12, follow Highway 12 for approximately 24 miles to where Highway 12 and

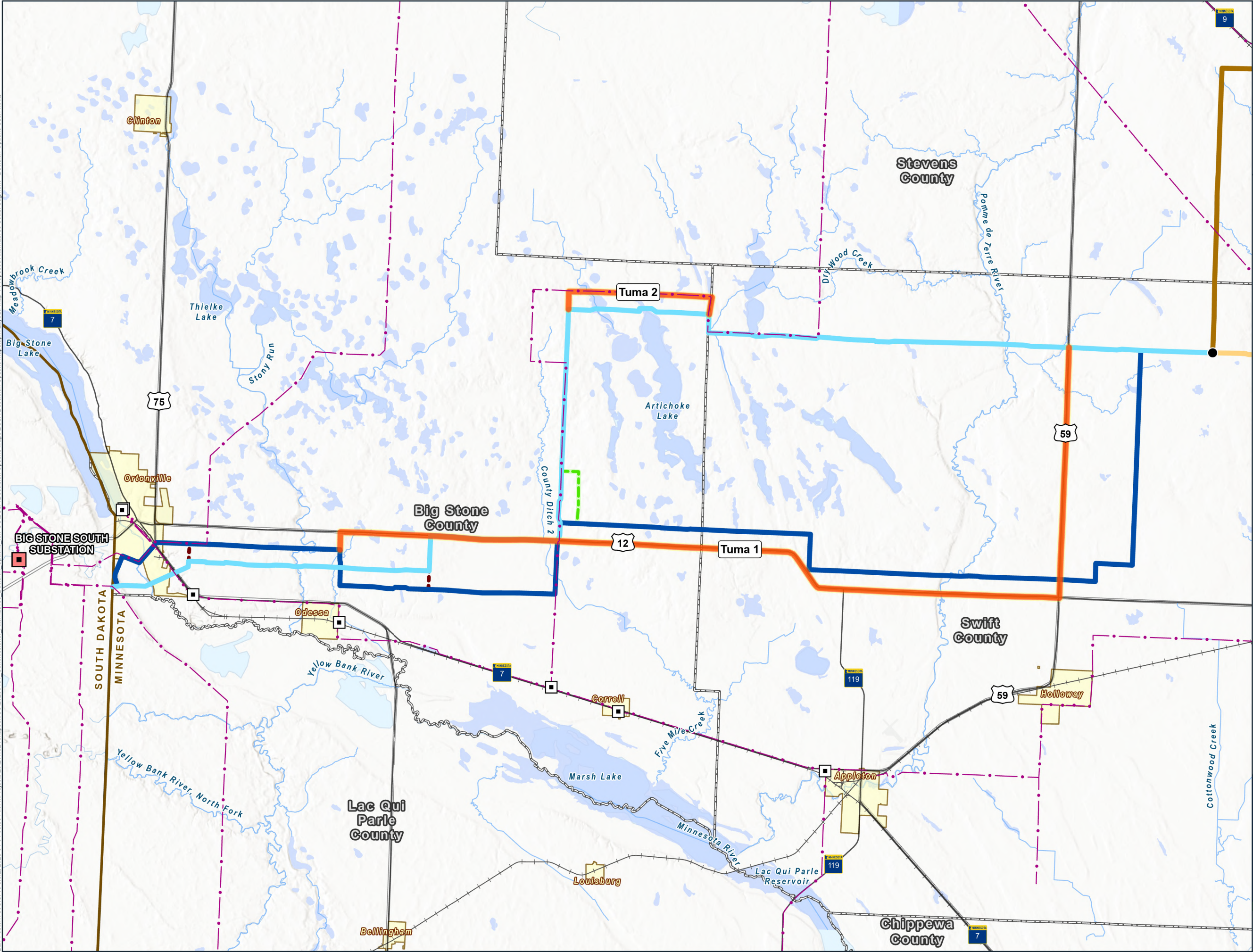
Highway 59 intersect in Swift County, MN. From this point turn north from the South 1 Route and follow Highway 59 north for approximately 7 miles until it connects with the South 2 Route along 60th St. NW. Along this highway route the alignment should initially be placed in the road right of way.

Tuma Route Alternative 2 (South): In Big Stone County, the Proposed South 2 Route follows 620th Avenue north and does a 90 degree turn East along 360th St. Instead of turning east on 360th St., this Alternative will continue North on 620th St. for approximately ½ mile where it will intersect with existing transmission line, then turn east following the existing transmission line corridor for approximately 4 miles, then at 260th Ave. NW this alternative turns south continuing to follow the existing transmission line and reconnect to the South 2 Route.

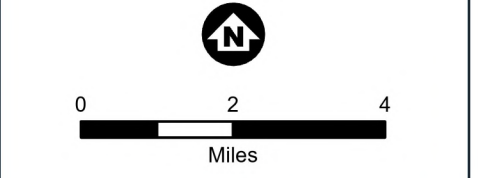
Tuma Route Alternative 3 (North): In Pope County North Route 2 crosses Highway 29 and continues for approximately ½ mile before doing a 90 degree turn North in Section 31 where the route meets a railroad line. This Alternative 3 will instead follow the railroad line north for approximately 2 miles, then will terminate where the railroad intersects with North 2 Route in Section 19.

Tuma Route Alternative 4 (North): Where Tuma Alternative 3 terminates at the intersection of the railroad line and an east-west portion of North 2 Route, this Alternative 4 will continue following the railroad line for approximately 1 mile until it intersects with the existing 400 kV transmission line in Section 17 and then head east/northeast to where the 400kv line intersects with North 2 Route.

Bar Footer ArcGISPro 3.3.2, 2025-04-04 08:50 File: I:\Projects\231102\1\Maps\MISC\20250401 Commission Alternatives Decision Options for PUC/BSSA Decision Options Maps.aprx Layout: Map 1 Proposed Alternatives South Segment - Decision Options User: MRQ



- Existing Substation
 - Existing Transmission Line
 - Major Highway
 - Railroad
 - State Boundary
 - County Boundary
 - Municipal Boundary
 - Public Watercourse
 - Public Water Basin
 - Proposed Alternative
- Applicants' Proposed Route Options**
- South 1
 - South 2
 - Central 1
 - Central 2
 - North 1
 - North 2
 - Alternate Segment
 - Connector Segment
 - Proposed Project Substation
 - Route Segment End

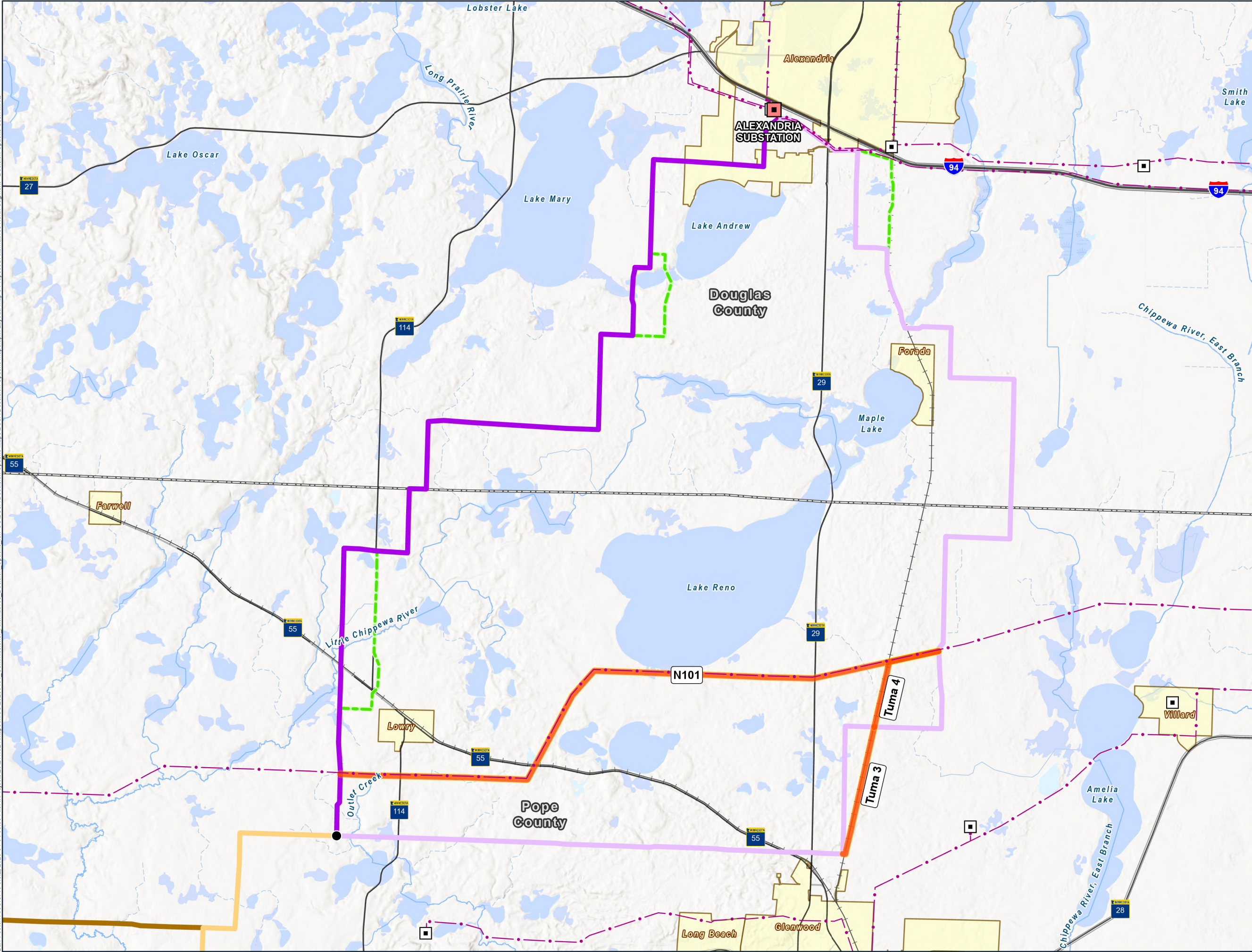


**Proposed Alternatives
South Segment
Decision Options
Big Stone to Alexandria Project**

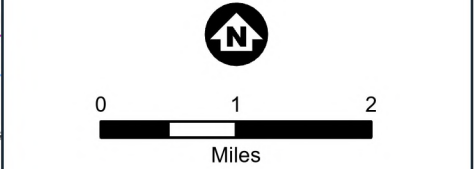
MAP 1

m MINNESOTA

Bar Footer ArcGISPro 3.3.2, 2025-04-04 08:50 File: I:\Projects\23\21102\1\Maps\BSSA Decision Options Maps\BSSA Decision Options Maps.aprx Layout: Map 3 Proposed Alternatives North Segment - Decision Options User MRQ



- Existing Substation
 - Existing Transmission Line
 - Major Highway
 - Railroad
 - County Boundary
 - Municipal Boundary
 - Public Watercourse
 - Public Water Basin
 - Proposed Alternative
- Applicants' Proposed Route Options**
- Central 1
 - Central 2
 - North 1
 - North 2
 - Alternate Segment
- Proposed Project Substation
 - Route Segment End



**Proposed Alternatives
North Segment
Decision Options
Big Stone to Alexandria Project**

MAP 3

m MINNESOTA