

Proposed Pipeline - Sandpiper	Milepost - Sandpiper	Tract Boundary
Existing Enbridge Pipelines	Potential Block Valve	Facility Boundary
Foreign Pipes	Environmental Survey Area (ESA)	Previously Sited Facility Boundary
Transmission Lines		Section Lines
SPREAD BREAK		

500 250 0 500 1,000 Feet

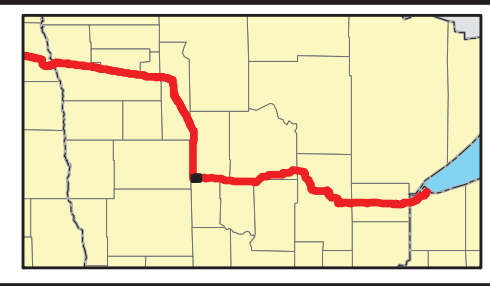
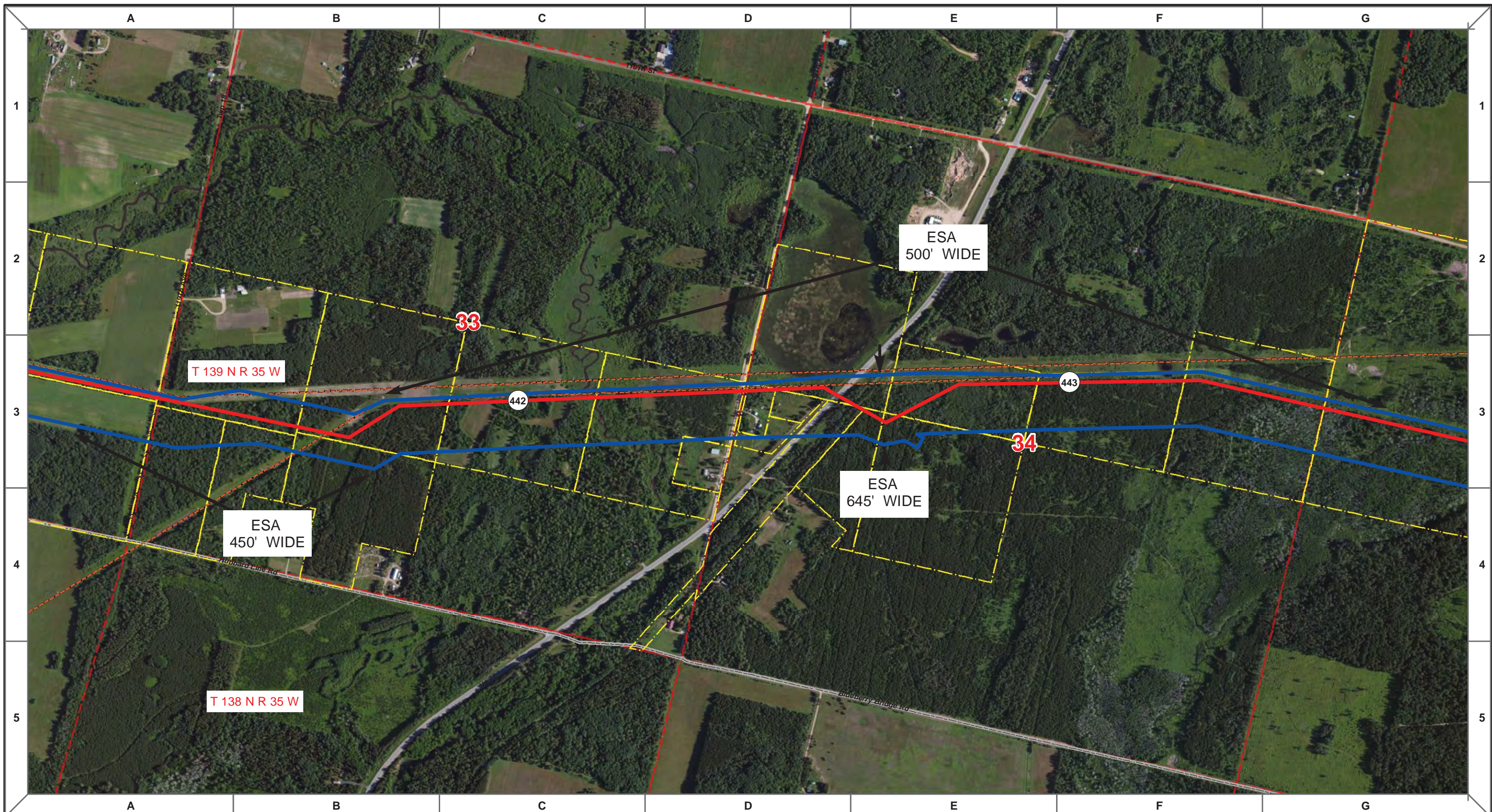
MLB	DATE	REV NO.	DESCRIPTION
	10/10/13	0	PUC Submittal

ENBRIDGE PIPELINES (NORTH DAKOTA) LLC

PROPOSED SANDPIPER PIPELINE PROJECT
ROUTE MAP
 Hubbard County, MN

DRAWN: MLB	CHECKED: --
DATE: Oct 18, 2013	SCALE: AS SHOWN

Spread:6 Map: 60 of 128



Proposed Pipeline - Sandpiper	Milepost - Sandpiper	Tract Boundary
Existing Enbridge Pipelines	Potential Block Valve	Facility Boundary
Foreign Pipes	Environmental Survey Area (ESA)	Previously Sited Facility Boundary
Transmission Lines		Section Lines
SPREAD BREAK		

500 250 0 500 1,000 Feet

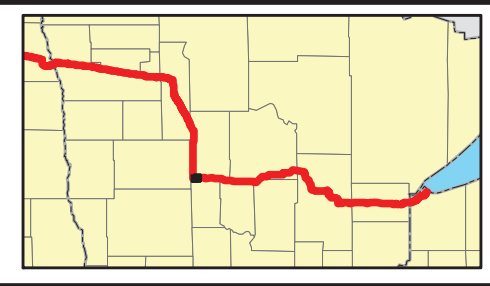
MLB	DATE	REV NO.	DESCRIPTION
	10/10/13	0	PUC Submittal

ENBRIDGE PIPELINES (NORTH DAKOTA) LLC

**PROPOSED SANDPIPER PIPELINE PROJECT
ROUTE MAP
Hubbard County, MN**

DRAWN: <i>MLB</i>	CHECKED: <i>--</i>
DATE: <i>Oct 18, 2013</i>	SCALE: <i>AS SHOWN</i>

Spread:6 Map: 61 of 128



Proposed Pipeline - Sandpiper	Milepost - Sandpiper	Tract Boundary
Existing Enbridge Pipelines	Potential Block Valve	Facility Boundary
Foreign Pipes	Environmental Survey Area (ESA)	Previously Sited Facility Boundary
Transmission Lines		Section Lines
SPREAD BREAK		

500 250 0 500 1,000 Feet

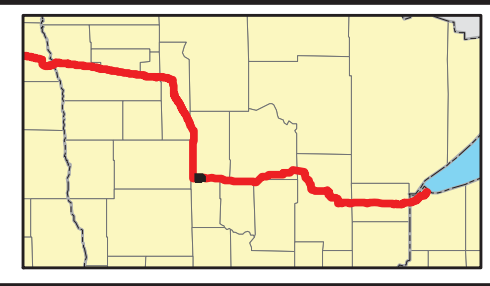
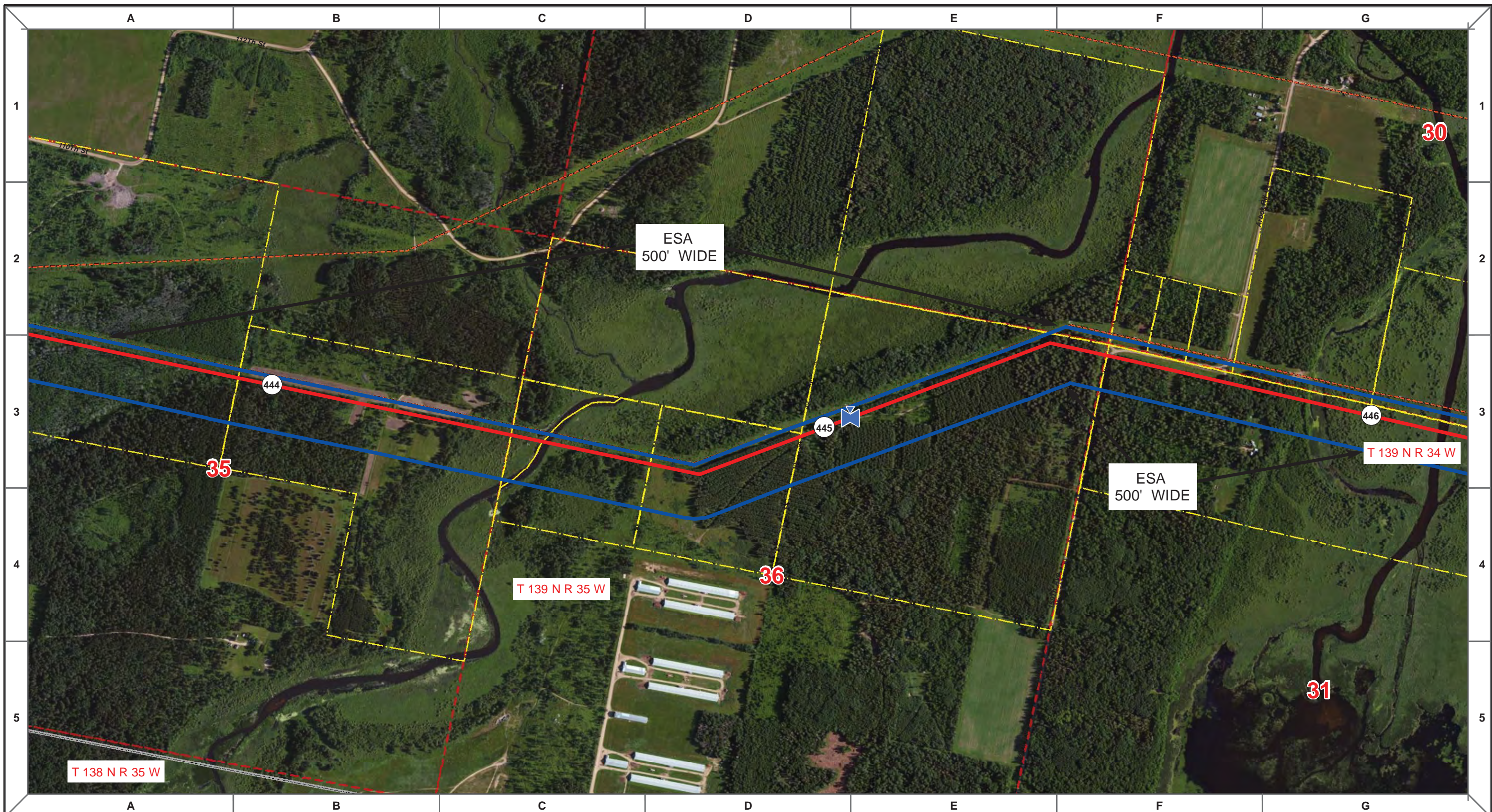
MLB	10/10/13	0	PUC Submittal
DRAWN	CHECKED	APPROVED	DATE
REV NO.	DESCRIPTION		

ENBRIDGE PIPELINES (NORTH DAKOTA) LLC

**PROPOSED SANDPIPER PIPELINE PROJECT
ROUTE MAP
Hubbard County, MN**

DRAWN: MLB	CHECKED: --
DATE: Oct 18, 2013	SCALE: AS SHOWN

Spread:6 Map: 61 of 128



Proposed Pipeline - Sandpiper	Milepost - Sandpiper	Tract Boundary
Existing Enbridge Pipelines	Potential Block Valve	Facility Boundary
Foreign Pipes	Environmental Survey Area (ESA)	Previously Sited Facility Boundary
Transmission Lines		Section Lines
SPREAD BREAK		

500 250 0 500 1,000 Feet

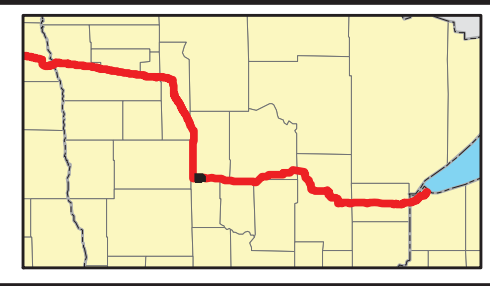
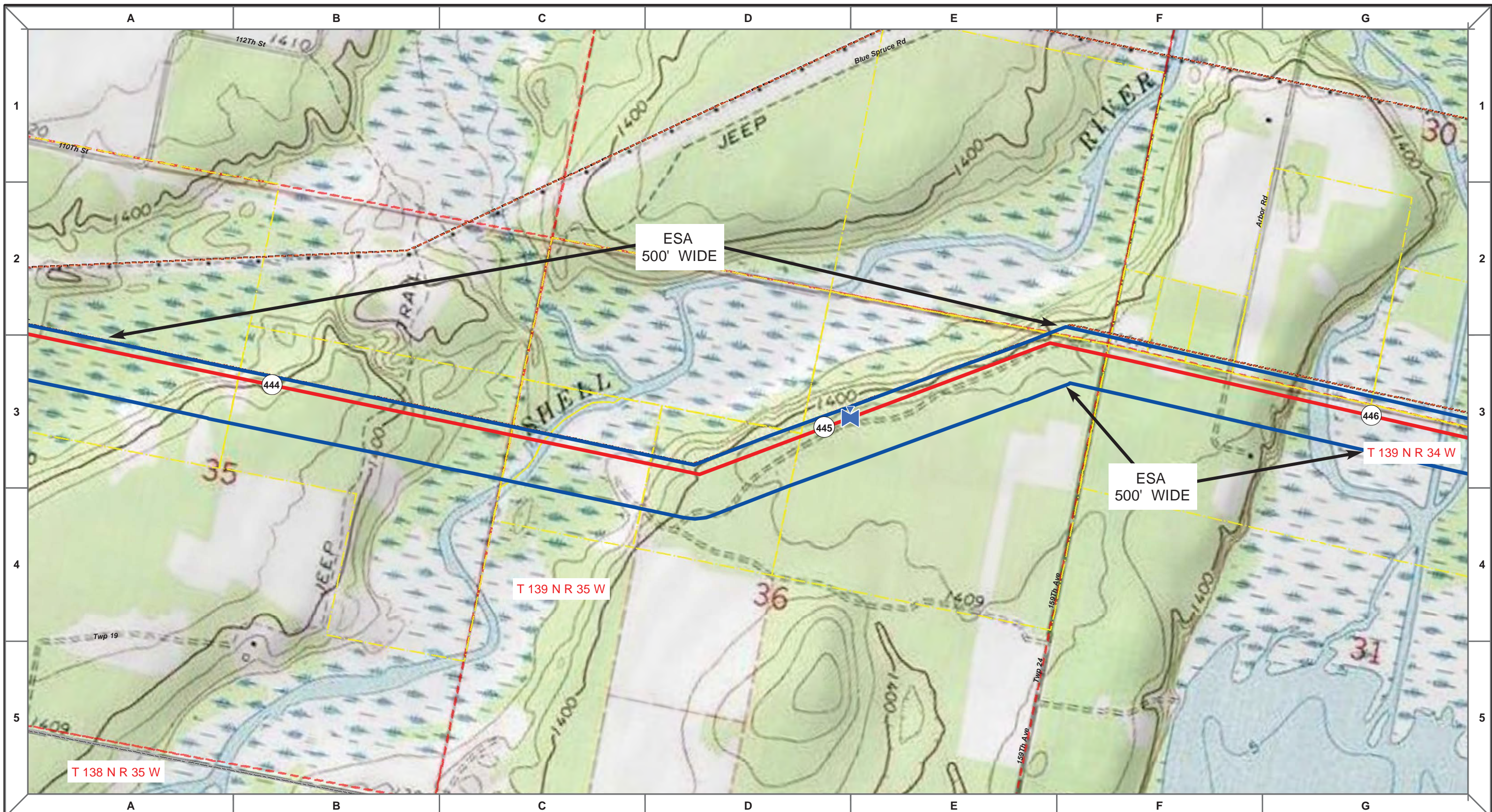
DRAWN	CHECKED	APPROVED	DATE	REV NO.	DESCRIPTION
MLB			10/10/13	0	PUC Submittal

ENBRIDGE PIPELINES (NORTH DAKOTA) LLC

PROPOSED SANDPIPER PIPELINE PROJECT
ROUTE MAP
 Hubbard County, MN

<small>DRAWN:</small> MLB	<small>CHECKED:</small> --
<small>DATE:</small> Oct 18, 2013	<small>SCALE:</small> AS SHOWN

Spread:6 Map: 62 of 128



Proposed Pipeline - Sandpiper	Milepost - Sandpiper	Tract Boundary
Existing Enbridge Pipelines	Potential Block Valve	Facility Boundary
Foreign Pipes	Environmental Survey Area (ESA)	Previously Sited Facility Boundary
Transmission Lines		Section Lines
SPREAD BREAK		

500 250 0 500 1,000 Feet

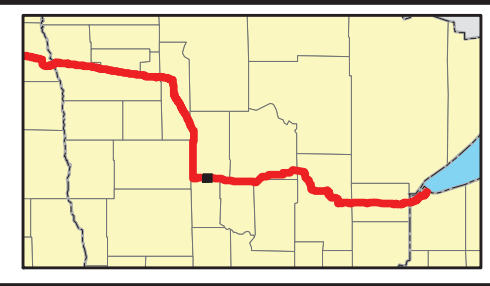
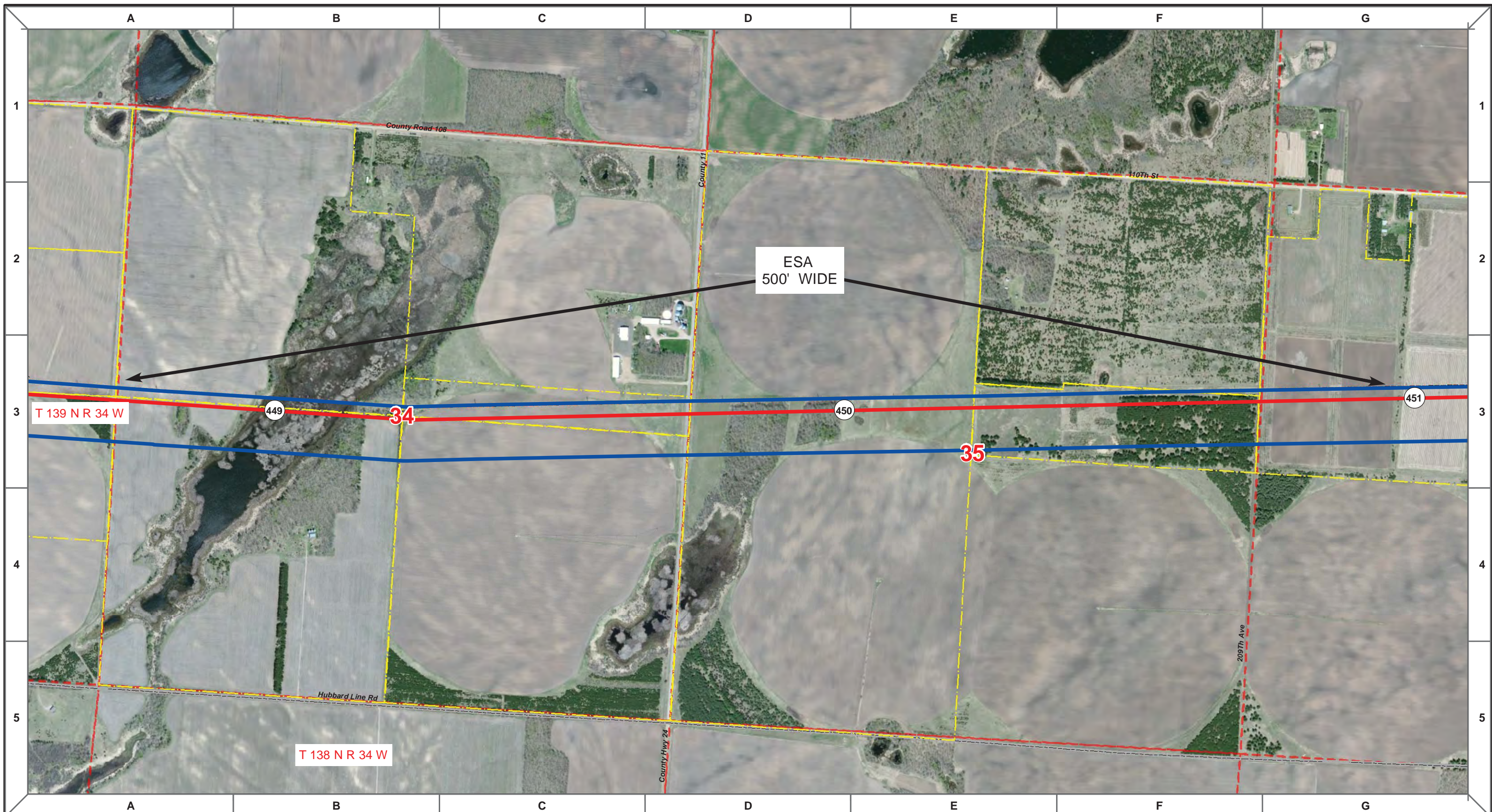
MLB	10/10/13	0	PUC Submittal
DRAWN	CHECKED	APPROVED	DATE
			REV NO.
			DESCRIPTION

ENBRIDGE PIPELINES (NORTH DAKOTA) LLC

PROPOSED SANDPIPER PIPELINE PROJECT
ROUTE MAP
 Hubbard County, MN

DRAWN: MLB	CHECKED: --
DATE: Oct 18, 2013	SCALE: AS SHOWN

Spread:6 Map: 62 of 128



Proposed Pipeline - Sandpiper	Milepost - Sandpiper	Tract Boundary
Existing Enbridge Pipelines	Potential Block Valve	Facility Boundary
Foreign Pipes	Environmental Survey Area (ESA)	Previously Sited Facility Boundary
Transmission Lines		Section Lines
SPREAD BREAK		

500 250 0 500 1,000 Feet

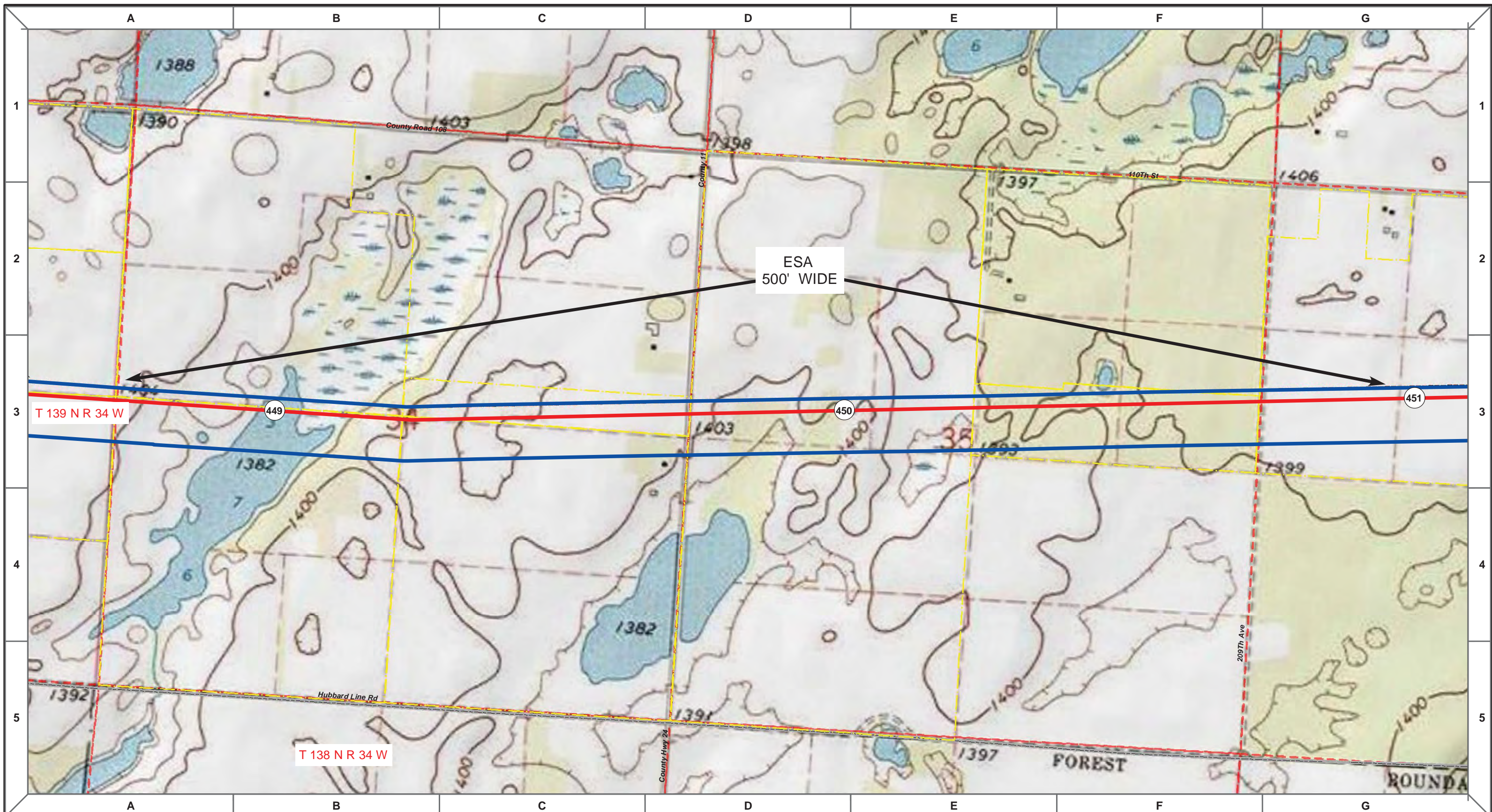
MLB	DATE	REV NO.	DESCRIPTION
	10/10/13	0	PUC Submittal

ENBRIDGE PIPELINES (NORTH DAKOTA) LLC

PROPOSED SANDPIPER PIPELINE PROJECT
ROUTE MAP
 Hubbard County, MN

DRAWN: MLB	CHECKED: --
DATE: Oct 18, 2013	SCALE: AS SHOWN

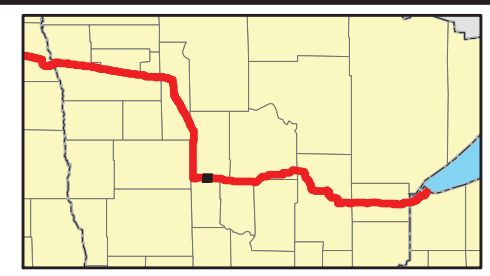
Spread: 7 Map: 64 of 128



ESA
500' WIDE

T 139 N R 34 W

T 138 N R 34 W



- Proposed Pipeline - Sandpiper
- Existing Enbridge Pipelines
- Foreign Pipes
- - - Transmission Lines
- SPREAD BREAK
- 1 Milepost - Sandpiper
- ✕ Potential Block Valve
- Environmental Survey Area (ESA)
- Tract Boundary
- Facility Boundary
- Previously Sited Facility Boundary
- Section Lines



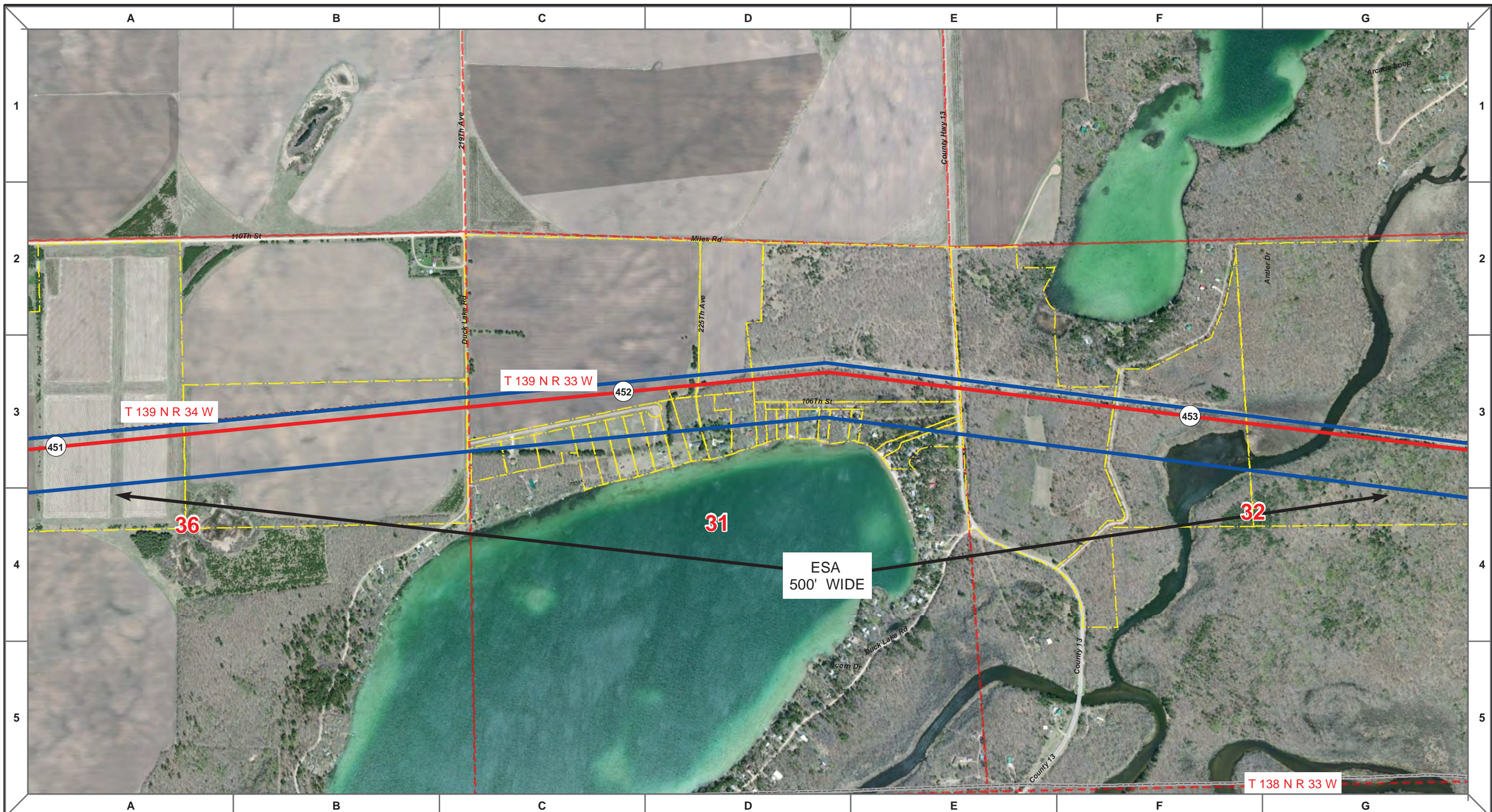
MLB	10/10/13	0	PUC Submittal	
DRAWN	CHECKED	APPROVED	DATE	REV NO.

ENBRIDGE PIPELINES (NORTH DAKOTA) LLC

**PROPOSED SANDPIPER
PIPELINE PROJECT
ROUTE MAP
Hubbard County, MN**

DRAWN: MLB	CHECKED: --
DATE: Oct 18, 2013	SCALE: AS SHOWN

Spread: 7
Map: 64 of 128



Proposed Pipeline - Sandpiper	Milepost - Sandpiper	Tract Boundary
Existing Enbridge Pipelines	Potential Block Valve	Facility Boundary
Foreign Pipes	Environmental Survey Area (ESA)	Previously Sited Facility Boundary
Transmission Lines		Section Lines
SPREAD BREAK		

500 250 0 500 1,000 Feet

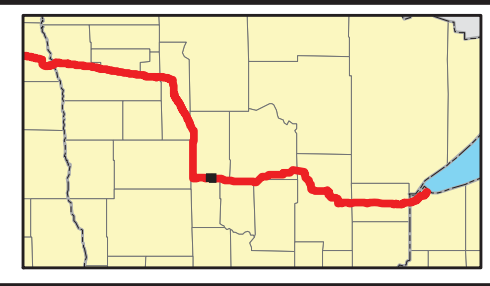
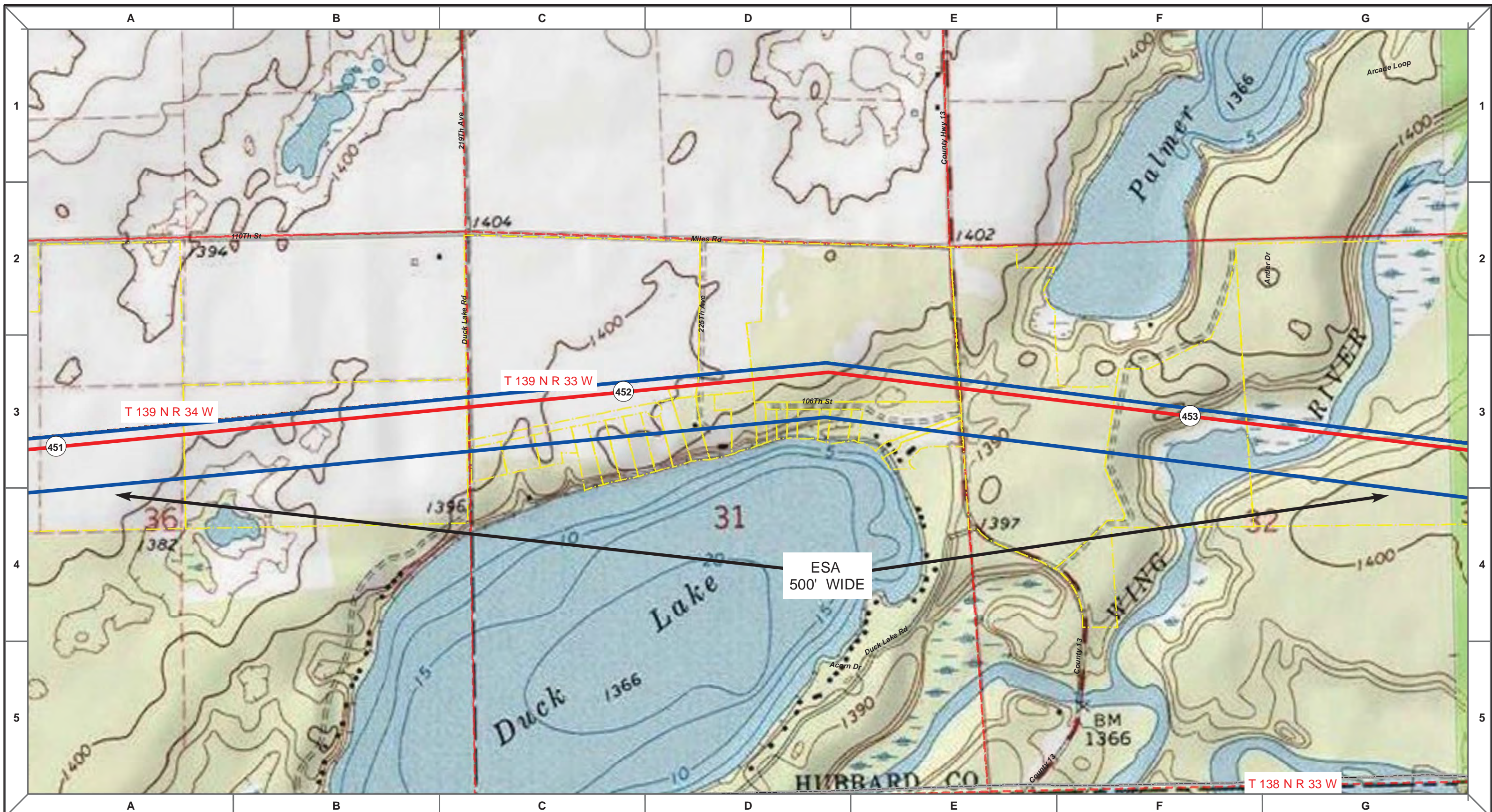
MLB	DATE	REV NO.	DESCRIPTION
	10/10/13	0	PUC Submittal

ENBRIDGE PIPELINES (NORTH DAKOTA) LLC

PROPOSED SANDPIPER PIPELINE PROJECT
ROUTE MAP
 Hubbard County, MN

DRAWN: MLB	CHECKED: --
DATE: Oct 18, 2013	SCALE: AS SHOWN

Spread:7 Map: 65 of 128



Proposed Pipeline - Sandpiper	Milepost - Sandpiper	Tract Boundary
Existing Enbridge Pipelines	Potential Block Valve	Facility Boundary
Foreign Pipes	Environmental Survey Area (ESA)	Previously Sited Facility Boundary
Transmission Lines		Section Lines
SPREAD BREAK		

500 250 0 500 1,000 Feet

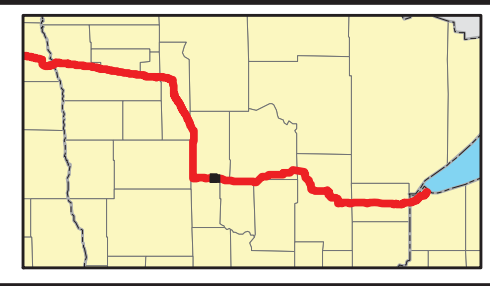
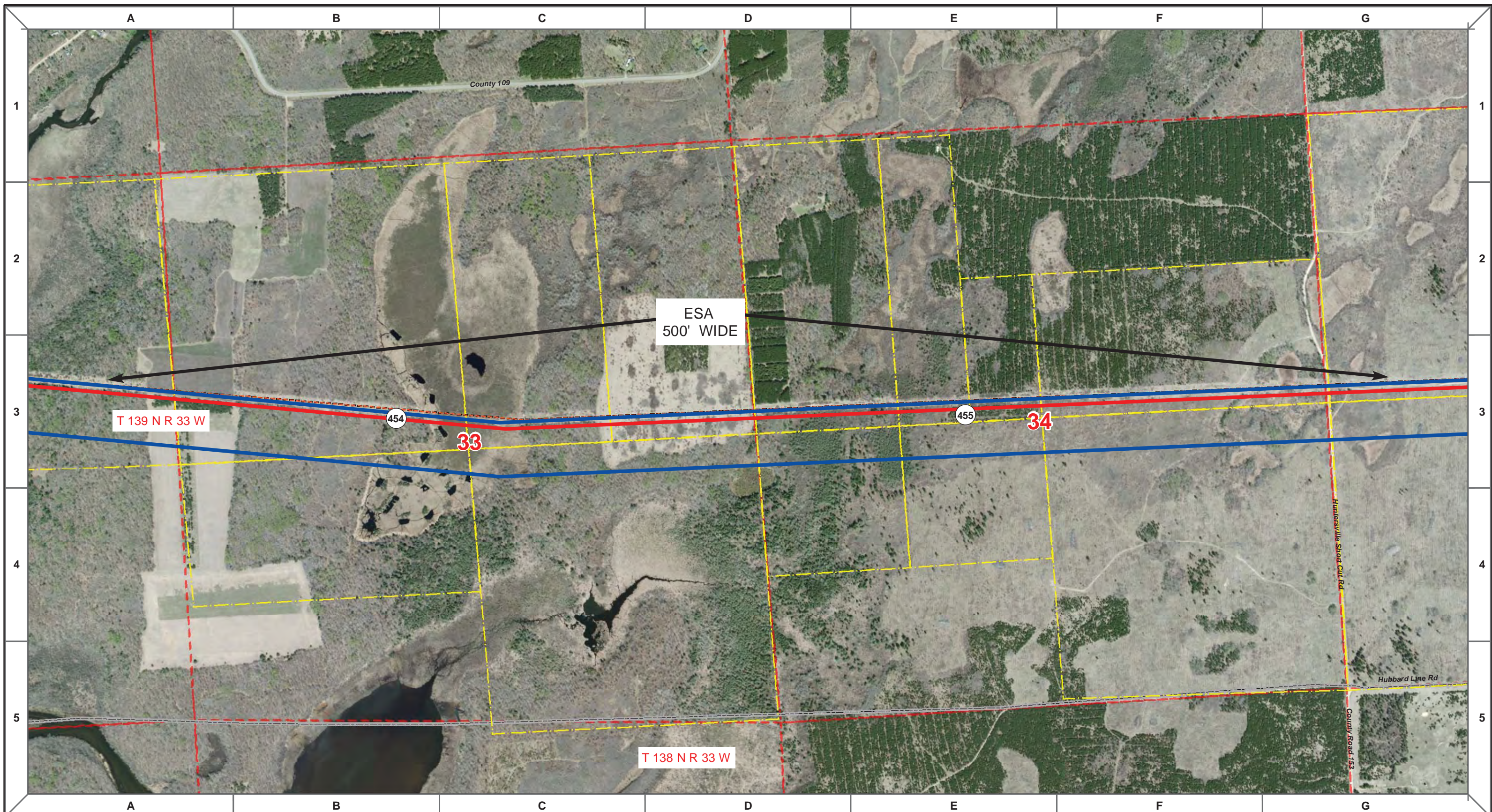
MLB	DATE	REV NO.	DESCRIPTION
	10/10/13	0	PUC Submittal

ENBRIDGE PIPELINES (NORTH DAKOTA) LLC

PROPOSED SANDPIPER PIPELINE PROJECT
ROUTE MAP
 Hubbard County, MN

DRAWN: MLB	CHECKED: --
DATE: Oct 18, 2013	SCALE: AS SHOWN

Spread:7 Map: 65 of 128



Proposed Pipeline - Sandpiper	Milepost - Sandpiper	Tract Boundary
Existing Enbridge Pipelines	Potential Block Valve	Facility Boundary
Foreign Pipes	Environmental Survey Area (ESA)	Previously Sited Facility Boundary
Transmission Lines		Section Lines
SPREAD BREAK		

500 250 0 500 1,000 Feet

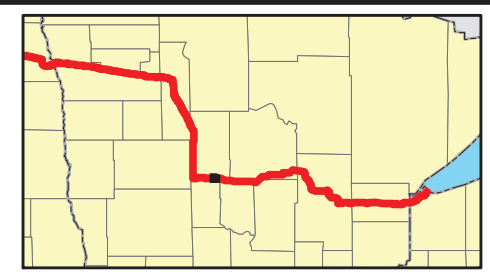
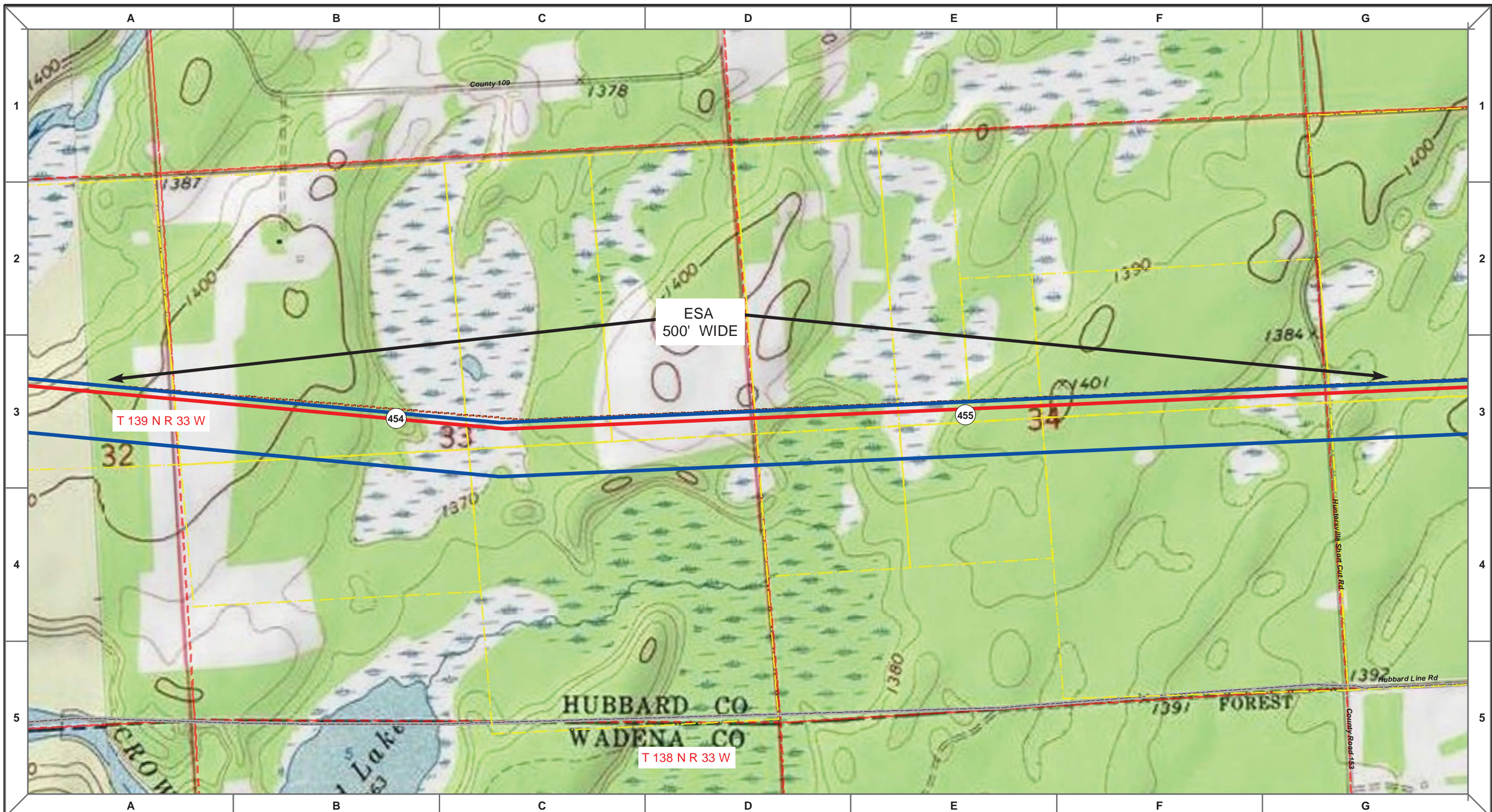
MLB	DATE	REV NO.	DESCRIPTION
	10/10/13	0	PUC Submittal

ENBRIDGE PIPELINES (NORTH DAKOTA) LLC

**PROPOSED SANDPIPER
PIPELINE PROJECT
ROUTE MAP
Hubbard County, MN**

<small>DRAWN:</small> MLB	<small>CHECKED:</small> --
<small>DATE:</small> Oct 18, 2013	<small>SCALE:</small> AS SHOWN

Spread:7 Map: 66 of 128



Proposed Pipeline - Sandpiper	Milepost - Sandpiper	Tract Boundary
Existing Enbridge Pipelines	Potential Block Valve	Facility Boundary
Foreign Pipes	Environmental Survey Area (ESA)	Previously Sited Facility Boundary
Transmission Lines		Section Lines
SPREAD BREAK		

MLB	DATE	REV NO.	DESCRIPTION
	10/10/13	0	PUC Submittal

ENBRIDGE PIPELINES (NORTH DAKOTA) LLC

**PROPOSED SANDPIPER PIPELINE PROJECT
ROUTE MAP
Hubbard County, MN**

<small>DRAWN:</small> MLB	<small>CHECKED:</small> --
<small>DATE:</small> Oct 18, 2013	<small>SCALE:</small> AS SHOWN

Spread:7
Map: 66 of 128