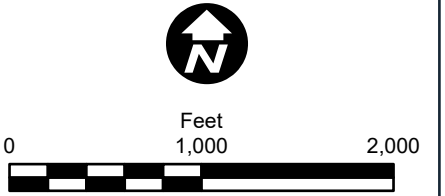
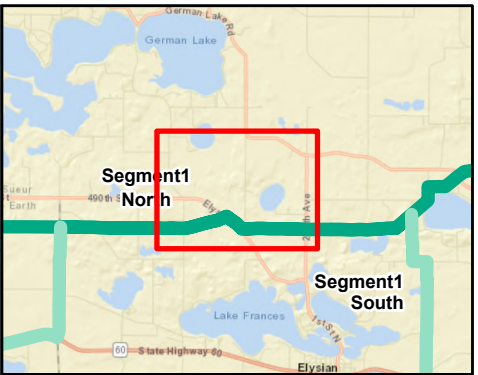
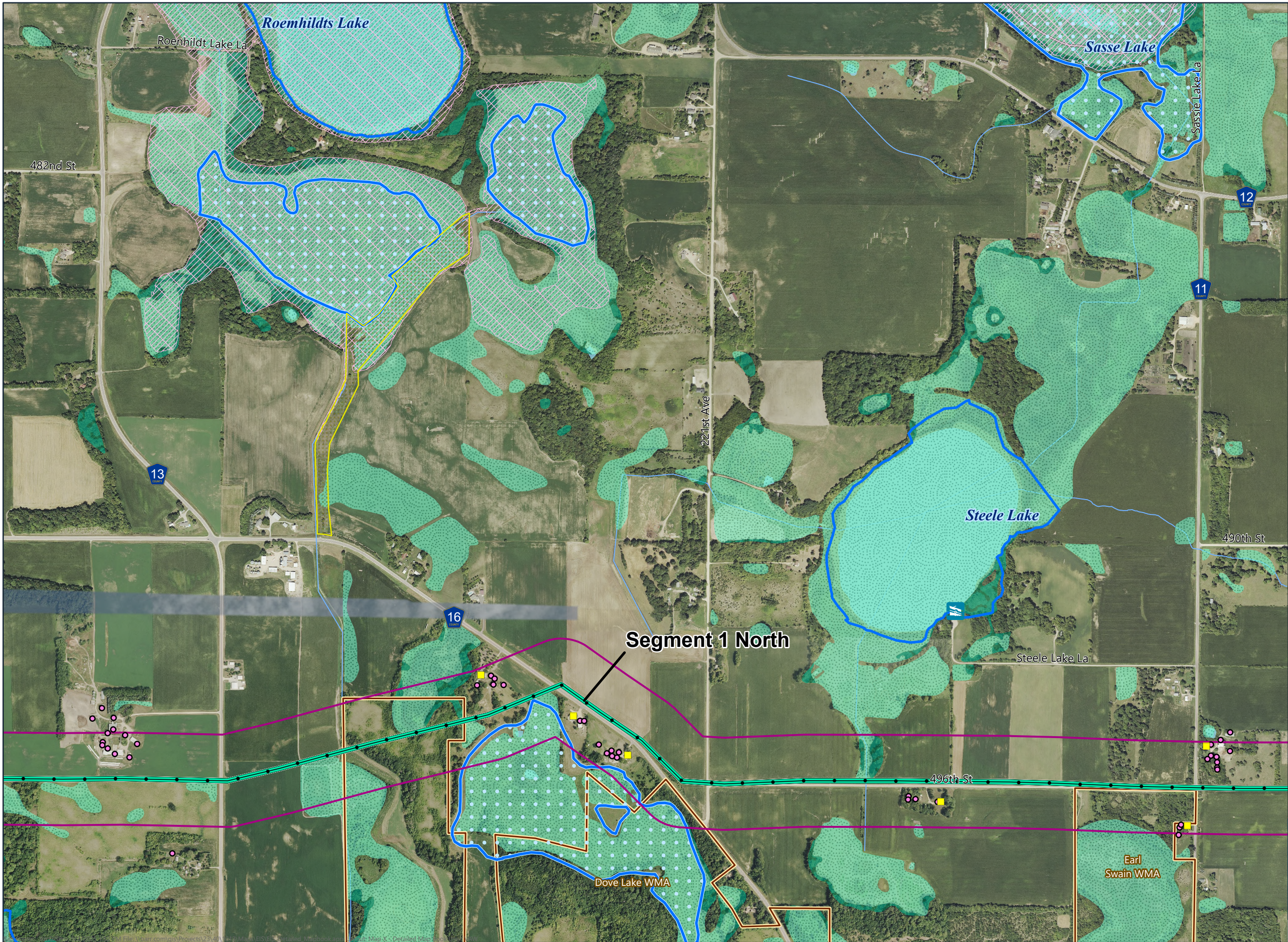
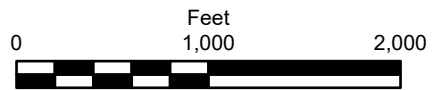


- Segment 1 North
- Segment 1 South
- Other Segments
- Proposed Route Width
- Gravel Pit
- Non-Residential Structure
- Residence Location
- Existing Transmission Line
- NHD Watercourse
- PWI Waterbody
- MPCA Impaired Waterbody
- PWI Watercourse
- Shallow Wildlife Lake
- Forested Wetland
- Non-Forested Wetland
- Floodplains**
 - 100-Year Floodplain
 - NHD Waterbody
 - Federal Conservation Easement
 - National Wildlife Refuge
- Site of Biodiversity Significance**
 - Moderate Significance
 - Below Minimum Significance





- Segment 1 North
- Other Segments
- Proposed Route Width
- Trailer Launch
- Non-Residential Structure
- Residence Location
- Existing Transmission Line
- NHD Watercourse
- PWI Waterbody
- MPCA Impaired Waterbody
- Shallow Wildlife Lake
- Forested Wetland
- Non-Forested Wetland
- Floodplains**
 - 100-Year Floodplain
 - NHD Waterbody
 - Wildlife Management Area
 - State Conservation Easements
 - National Wildlife Refuge
- Site of Biodiversity Significance**
 - Below Minimum Significance



**SEGMENT 1
DETAILED MAPBOOK**
Mankato - Mississippi River
Transmission Line Project