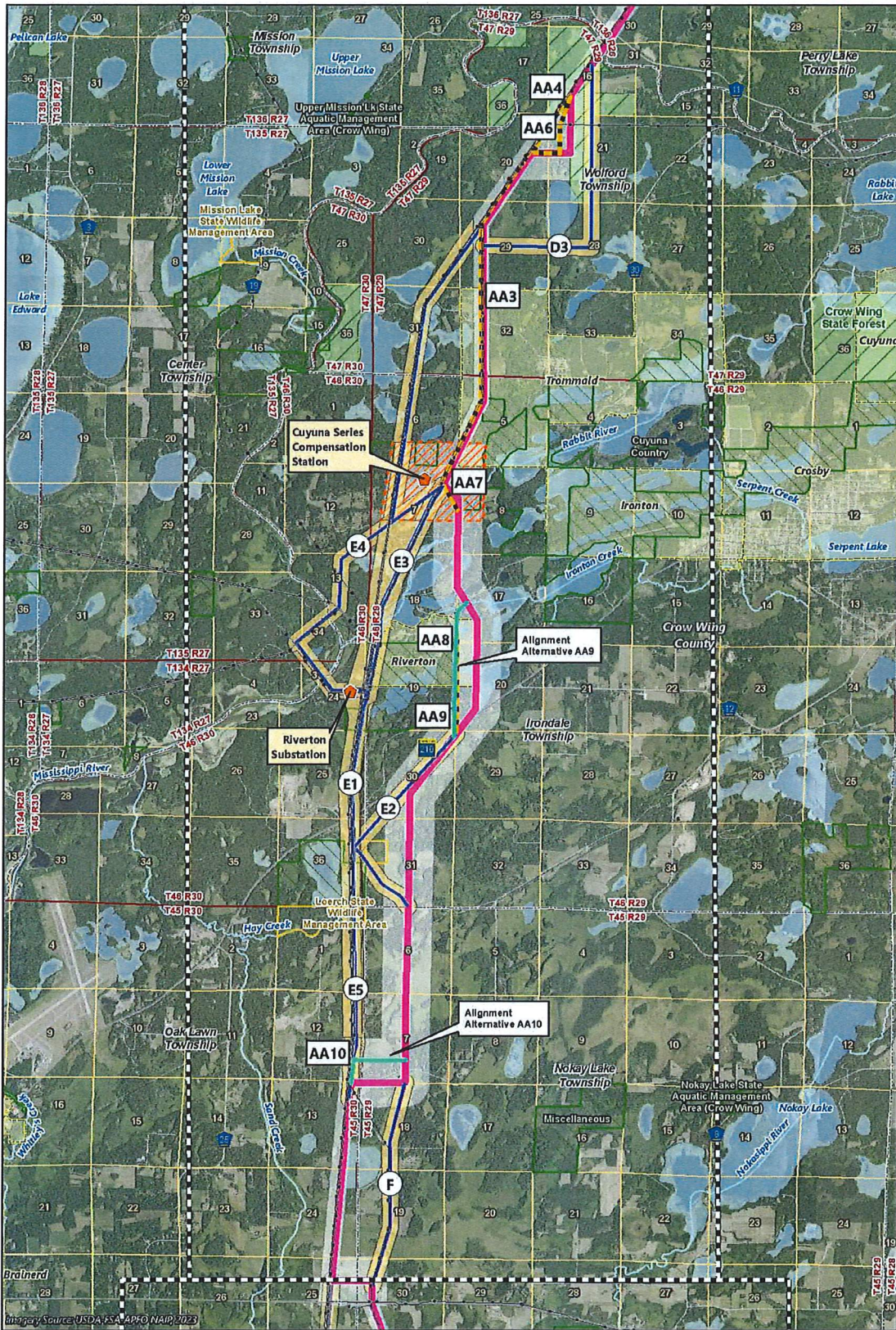


ATTACHMENT A

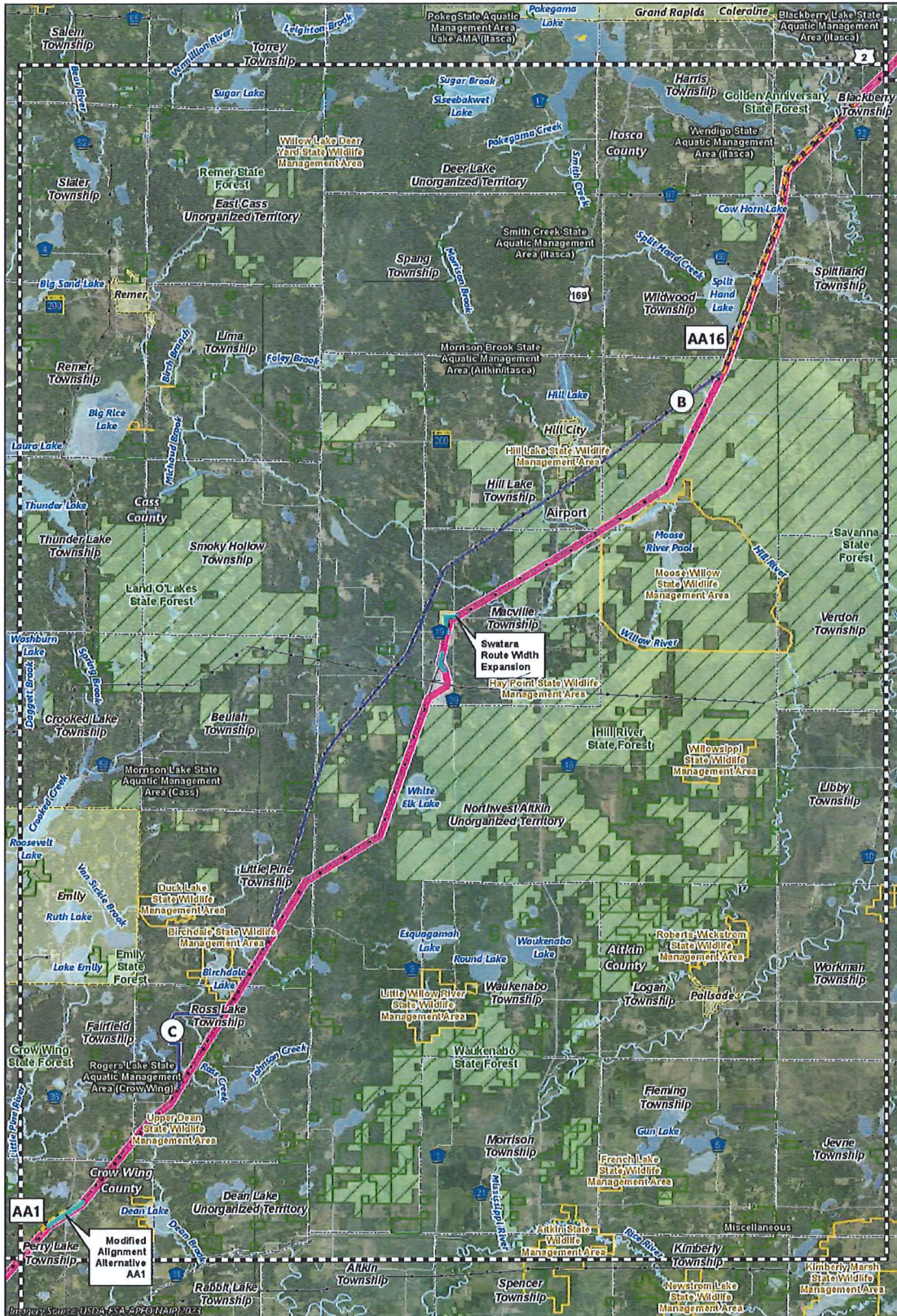
APPLICANTS' FINDING OF FACT INCLUDING ATTACHMENT D



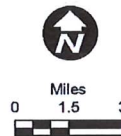
- Applicants' Modified Proposed Route
- Applicants' Proposed Route
- Route Width
- Alignment Alternative
- Route Alternative
- Route Alternative Width
- Existing Transmission Line
- Riverton Substation
- Cuyuna Series Compensation Station
- Substation Siting Area
- PWI Basin
- State Forest
- Municipal Boundary
- Region Boundary
- PWI Waterway



Map 7b, Appendix 4, Attachment D
APPLICANTS' MODIFIED PROPOSED ROUTE
 Cole Lake/Riverton Region
 Northland Reliability Project

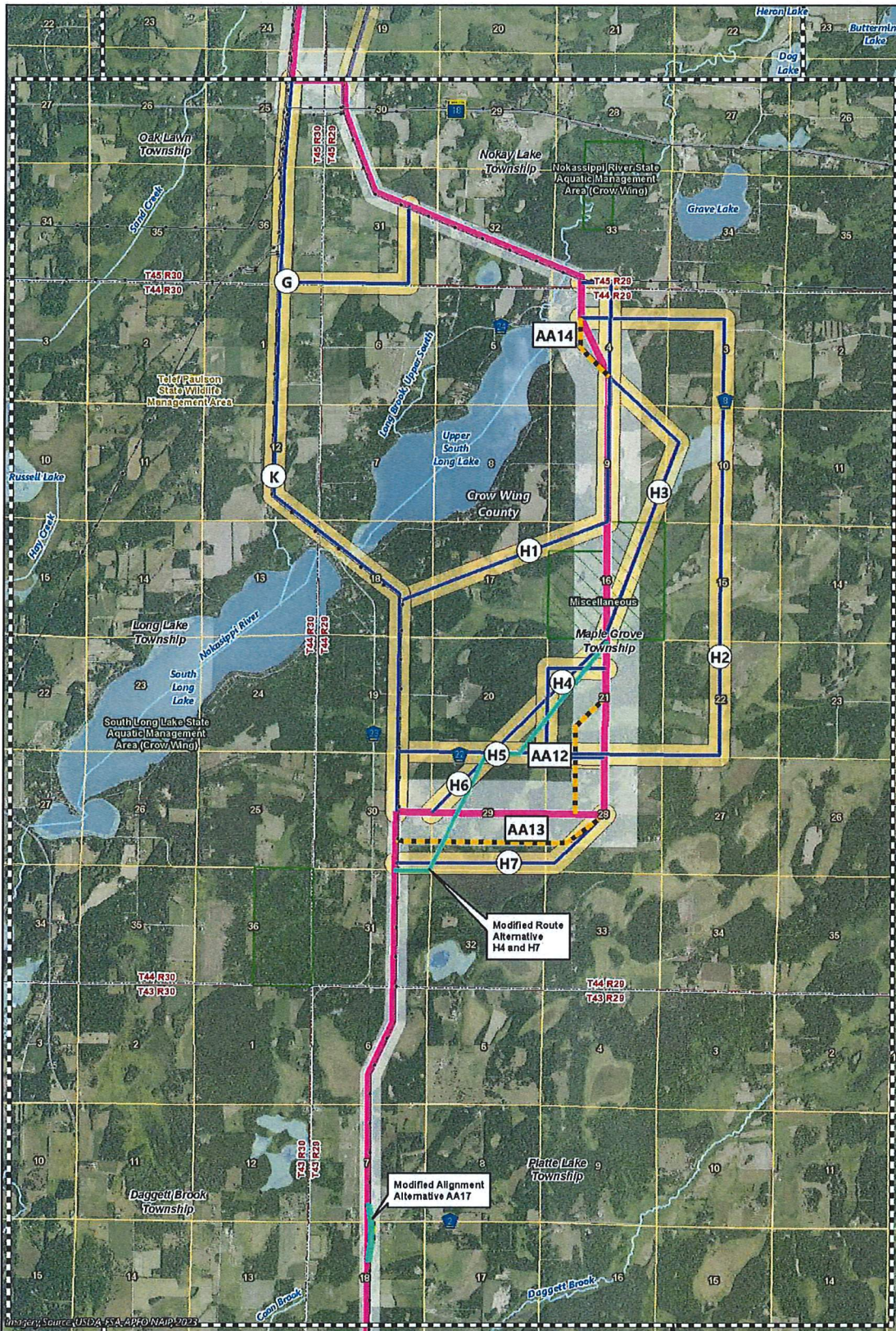


- Applicants' Modified Proposed Route
- Applicants' Proposed Route
- Route Width
- Alignment Alternative
- Route Alternative
- Route Alternative Width
- Existing Transmission Line
- PWI Waterway
- PWI Basin
- State Forest
- Municipal Boundary
- Region Boundary

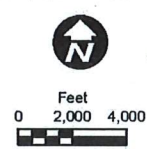


Map 7a, Appendix 4, Attachment D

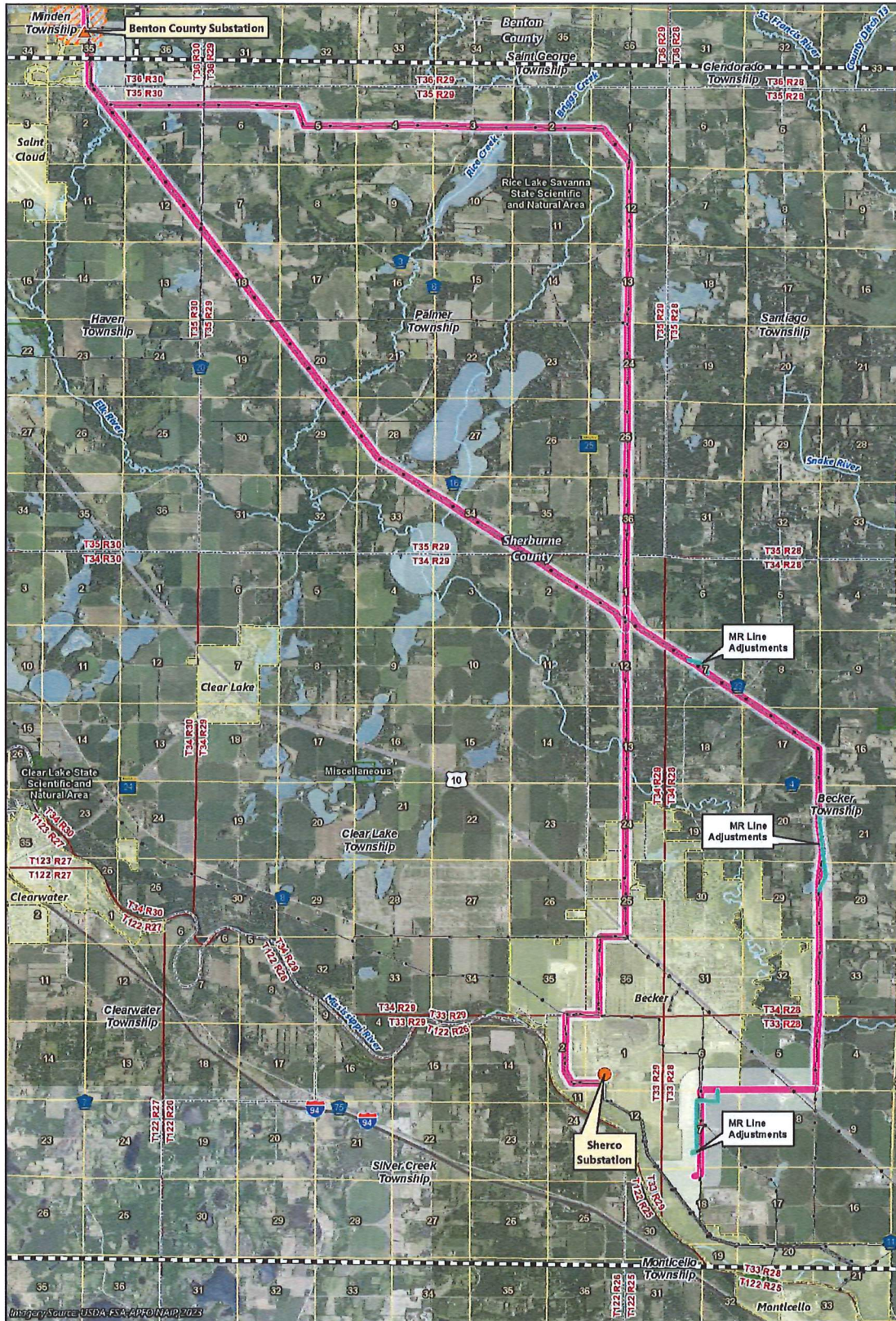
APPLICANTS' MODIFIED PROPOSED ROUTE
 Hill City to Little Pine Region
 Northland Reliability Project



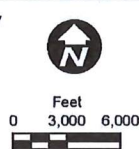
- Applicants' Modified Proposed Route
- Applicants' Proposed Route
- Route Width
- Alignment Alternative
- Route Alternative
- Route Alternative Width
- Existing Transmission Line
- PWI Waterway
- PWI Basin
- Region Boundary



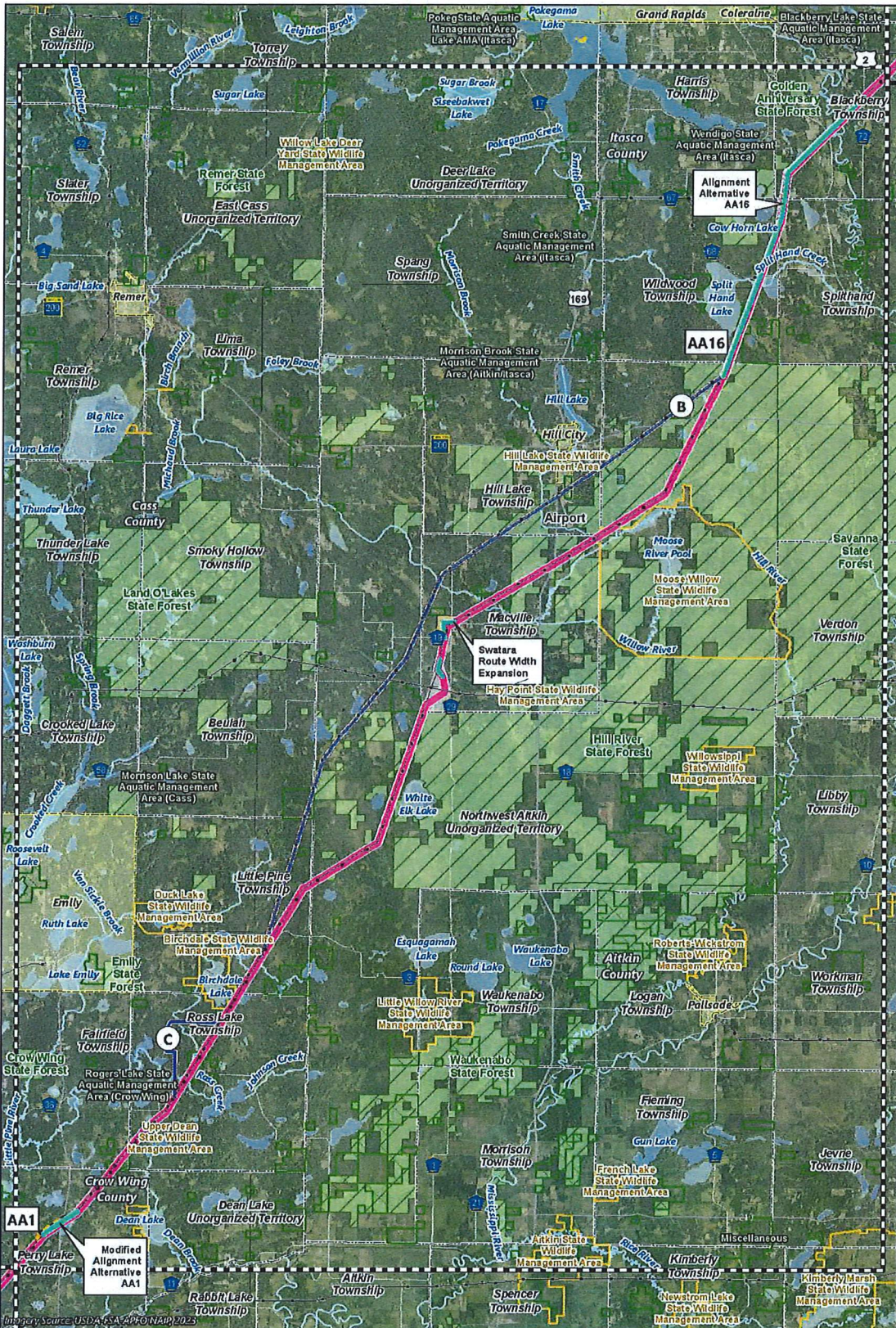
Map 7c, Appendix 4, Attachment D
APPLICANTS' MODIFIED PROPOSED ROUTE
 Long Lake Region
 Northland Reliability Project



- Applicants' Modified Proposed Route
- Applicants' Proposed Route
- Route Width
- Alignment Alternative
- Route Alternative
- Route Alternative Width
- Existing Transmission Line
- Benton County Substation
- Sherco Substation
- Substation Siting Area
- PWI Waterway
- PWI Basin
- Municipal Boundary
- Region Boundary



Map 7d, Appendix 4, Attachment D
APPLICANTS' MODIFIED PROPOSED ROUTE
 Sherburne County Region
 Northland Reliability Project

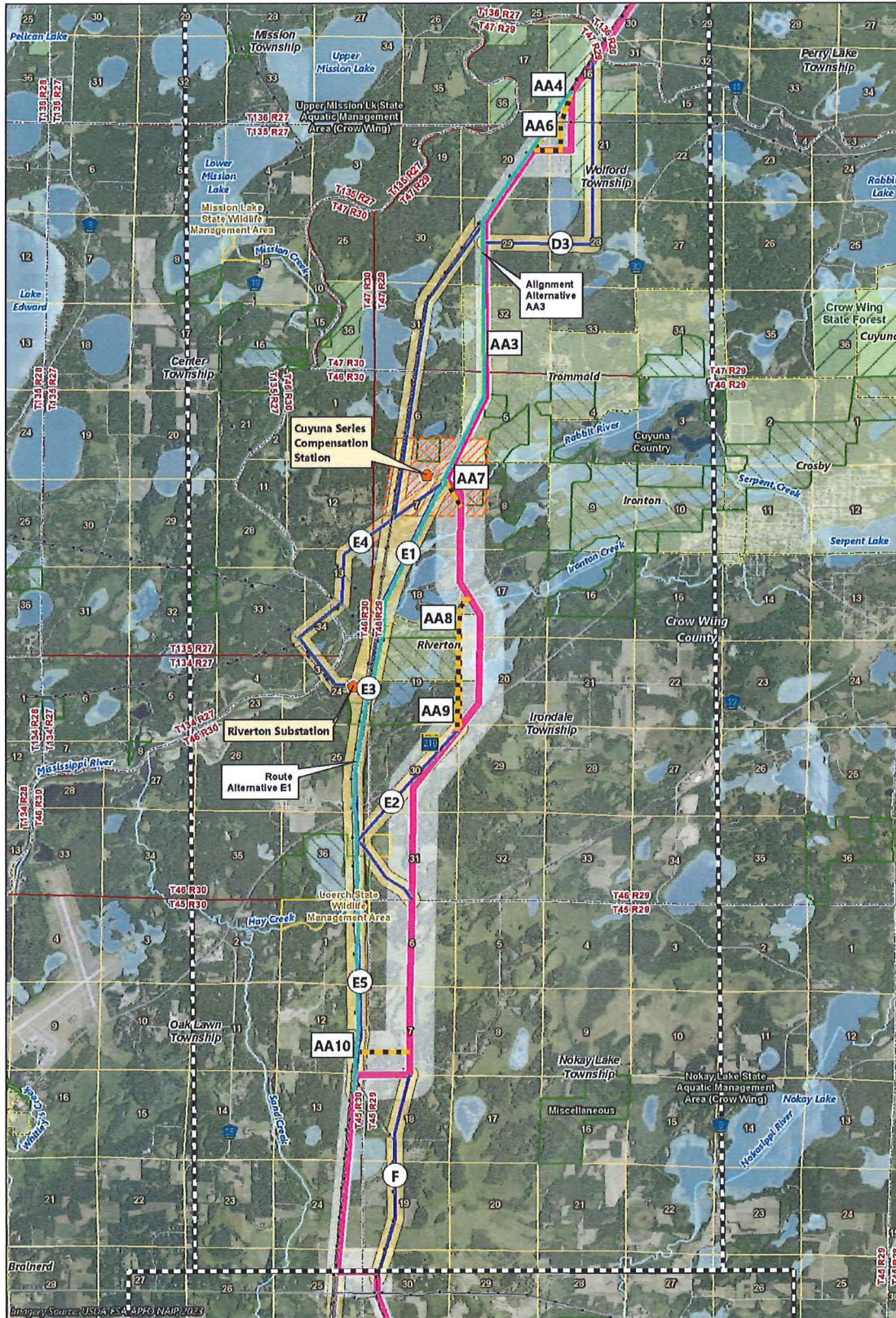


- Applicants' Co-Location Maximization Route
- Applicants' Proposed Route
- Route Width
- Alignment Alternative
- Route Alternative
- Route Alternative Width
- Existing Transmission Line
- PWI Waterway
- PWI Basin
- State Forest
- Municipal Boundary
- Region Boundary

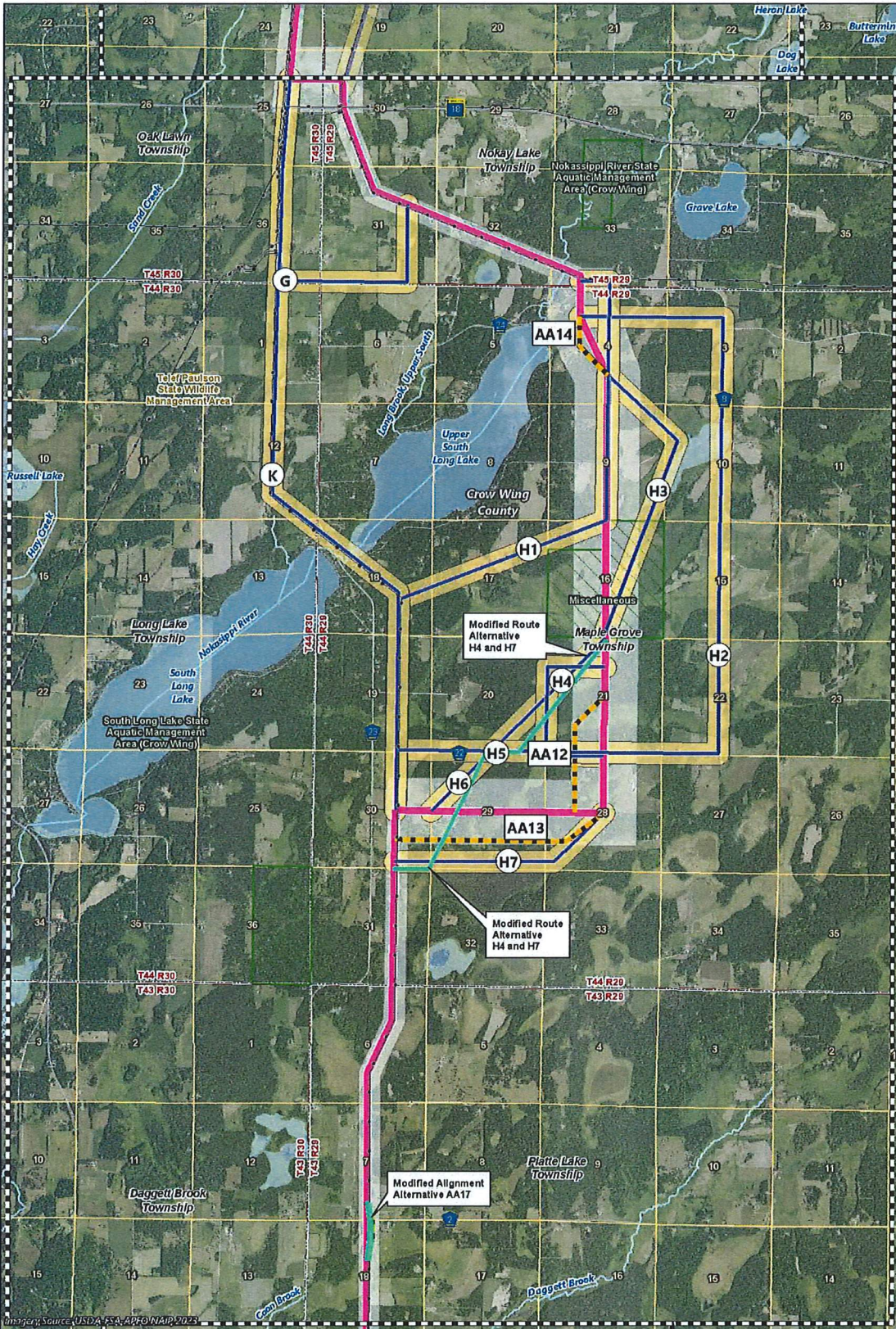


Map 8a, Appendix 4, Attachment D

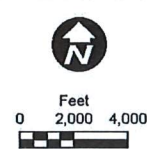
APPLICANTS' CO-LOCATION MAXIMIZATION ROUTE
Hill City to Little Pine Region
Northland Reliability Project



Map 8b, Appendix 4, Attachment D
APPLICANTS' CO-LOCATION MAXIMIZATION ROUTE
 Cole Lake/Riverton Region
 Northland Reliability Project

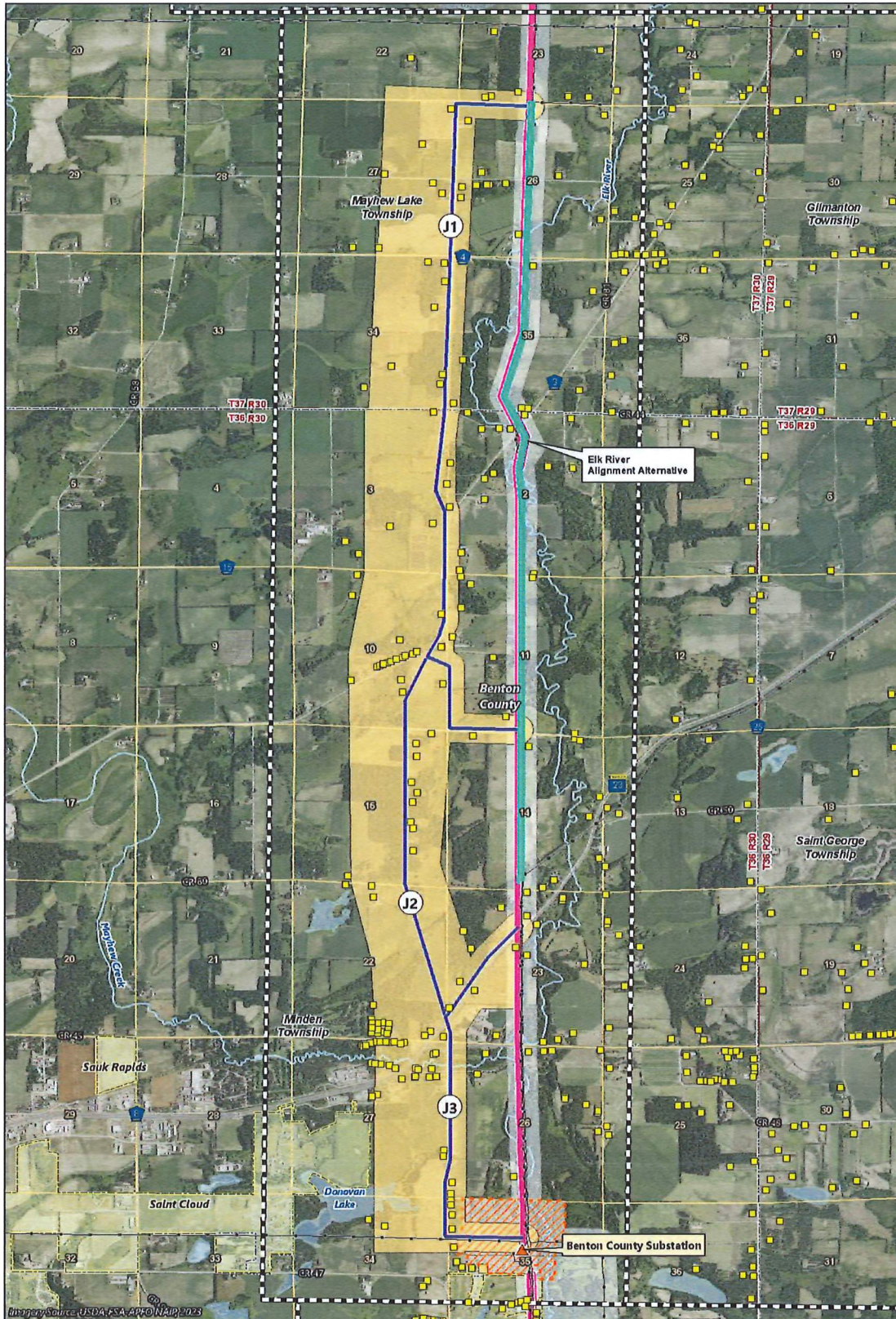


- Applicants' Co-Location Maximization Route
- Applicants' Proposed Route
- Route Width
- Alignment Alternative
- Route Alternative
- Route Alternative Width
- Existing Transmission Line
- PWI Waterway
- PWI Basin
- Region Boundary



Map 8c, Appendix 4, Attachment D

**APPLICANTS' CO-LOCATION
MAXIMIZATION ROUTE**
Long Lake Region
Northland Reliability Project

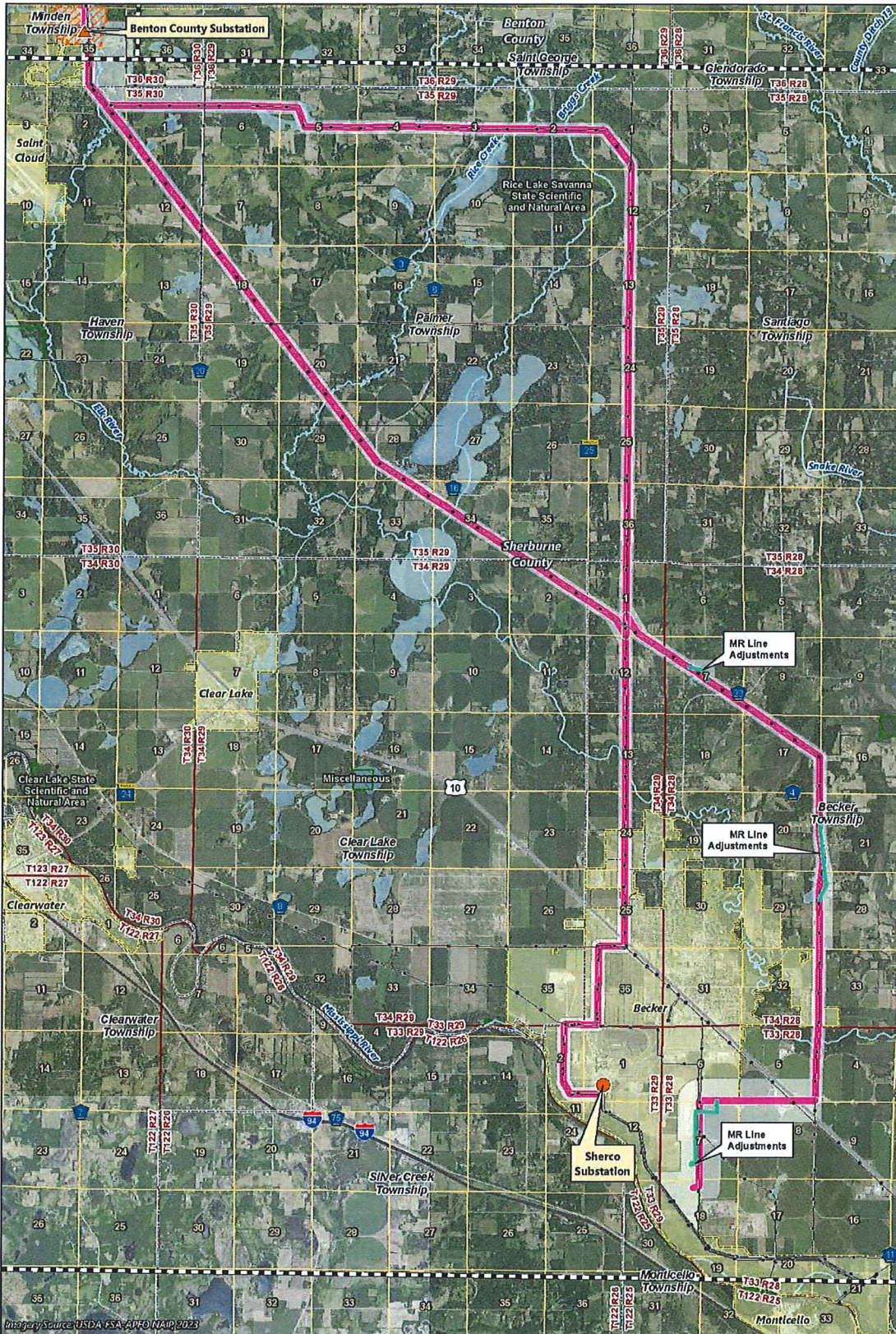


- Applicants' Co-Location Maximization Route
- Applicants' Proposed Route
- Route Width
- Alignment Alternative
- Route Alternative
- Route Alternative Width
- Existing Transmission Line
- Benton County Substation
- Substation Siting Area
- Residence
- FWI Waterway
- PWI Basin
- Municipal Boundary
- Region Boundary



Map 8d, Appendix 4, Attachment D

**APPLICANTS' CO-LOCATION
MAXIMIZATION ROUTE**
Benton County Elk River Region
Northland Reliability Project



- Applicants' Co-Location Maximization Route
- Applicants' Proposed Route
- Route Width
- Alignment Alternative
- Route Alternative
- Route Alternative Width
- Existing Transmission Line
- Benton County Substation
- Sherco Substation
- Substation Siting Area
- PWI Waterway
- PWI Basin
- Municipal Boundary
- Region Boundary



Map 8e, Appendix 4, Attachment D

**APPLICANTS' CO-LOCATION
MAXIMIZATION ROUTE**
Sherburne County Region
Northland Reliability Project

