

From: [Randy Sabart](#)
To: [Strohfus, Mark GRE-MG](#)
Cc: [Nate Keller](#); [Matt Glaesman](#); [Ryan Wensmann](#)
Subject: RE: City Projects for Cumulative Impacts Analysis with ST-WW 69kV Rebuild
Date: Monday, March 27, 2023 4:34:17 PM
Attachments: [Pages from 2019 Pavement Management Plan - 2019.11.07.pdf](#)

This email was sent by an external sender. Opening attachments or clicking links from untrusted sources may cause damage to you and Great River Energy.

Mark,

Please see the attached exhibit relative to St. Joseph's Pavement Maintenance Plan which attempts to forecast pavement maintenance activities (aggregate chip seals, crack filling), and pavement resurfacing activities (structural overlays, reclamation/paving). The project timelines identified in the plan follow common timeframes between original construction, maintenance treatments, and pavement conditions but don't necessarily describe a precise date for the referenced improvement. Generally speaking, the City has been executing the planned projects within 1-2 years of the year described in the plan.

The extension of municipal utilities (water main and sanitary sewer) on the St. Joseph side will be driven by new development activities. While the City has been approached within the last year by representatives of property abutting the west side of 73rd Ave, there are no immediate municipal utility improvements pending at the moment.

Sincerely,

Randy Sabart, PE, CDT (MN)
Principal, Regional Civil Practice Center Lead
Short Elliott Hendrickson Inc. (SEH®)
320.250.9187 mobile | 320.229.4348 direct | 320.229.4300 main

Building a Better World for All of Us®
100% Employee Owned
Follow SEH on [Twitter](#) | [Facebook](#) | [LinkedIn](#) | [Instagram](#)

STJOE G212 14

From: Strohfus, Mark GRE-MG <MStrohfu@GREnergy.com>
Sent: Monday, March 27, 2023 11:38 AM
To: Nate Keller <nkeller@cityofstjoseph.com>; Matt Glaesman <Matt.Glaesman@ci.stcloud.mn.us>
Cc: Randy Sabart <rsabart@sehinc.com>
Subject: City Projects for Cumulative Impacts Analysis with ST-WW 69kV Rebuild

Nate and Matt,

Jamie MacAlister, DOC-Energy and Environmental Review and Analysis (EERA), has asked for a list of City/County projects that will take place in the vicinity of our transmission line rebuild project. She'd like responses by the end of the week (March 31).

She is interested in roads, water, sewer project within the next 5 years. It was my understanding that the 76rd Ave expansion was further out than this. I don't recall the timeline for St. Cloud's sewer or waterline on the east side of 73Rd Ave or St. Joe's business/industrial park along the extended Westwood Parkway.

If you have maps for any upcoming projects, she'd like to see those too.

Feel free to call me with any questions.

Thanks,

Mark Strohfus

Project Manager, Transmission Permitting

12300 Elm Creek Boulevard

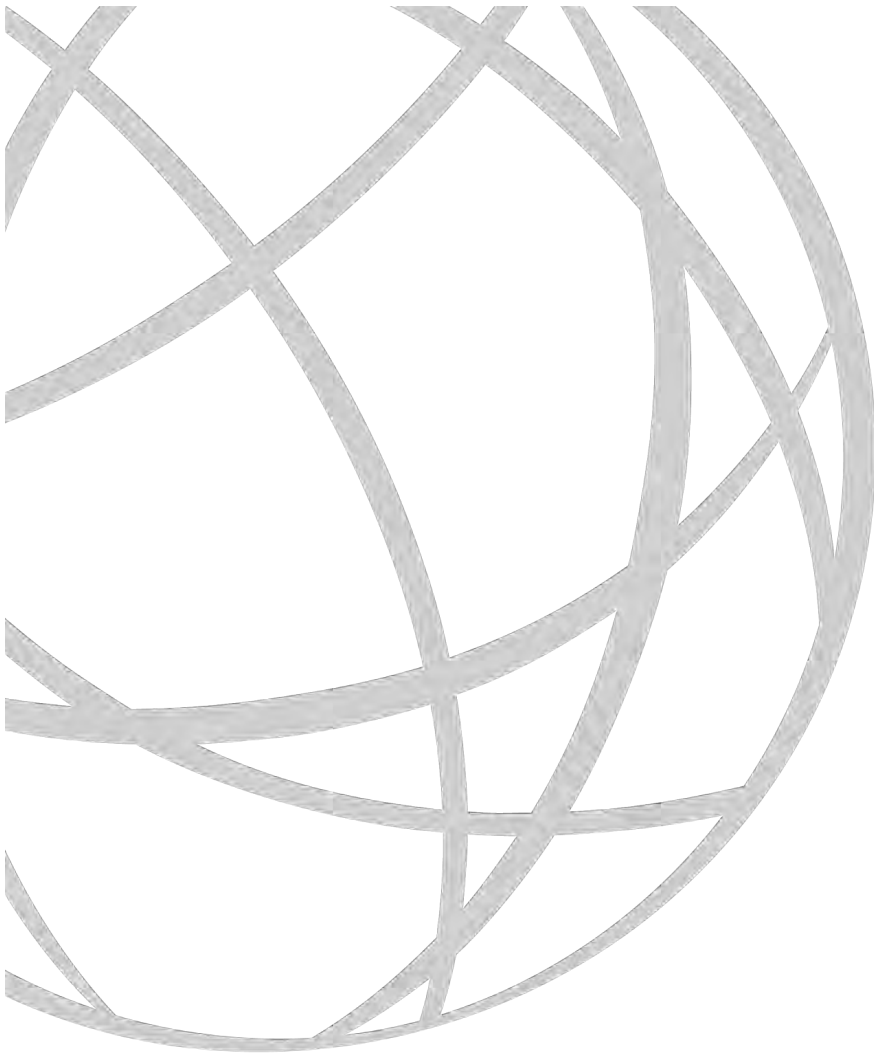
Maple Grove, MN 5536-4718

D: 763-445-5210

C: 612-961-9820

MStrohfus@GREnergy.com

NOTICE TO RECIPIENT: The information contained in this message from Great River Energy and any attachments are confidential and intended only for the named recipient(s). If you have received this message in error, you are prohibited from copying, distributing or using the information. Please contact the sender immediately by return email and delete the original message.



2019 Pavement Management Plan Update

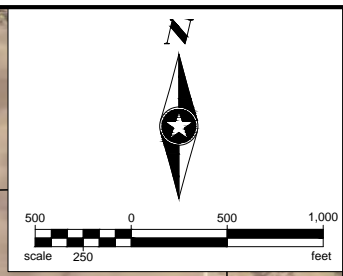
St. Joseph, Minnesota

STJOE 152274 | November 7, 2019

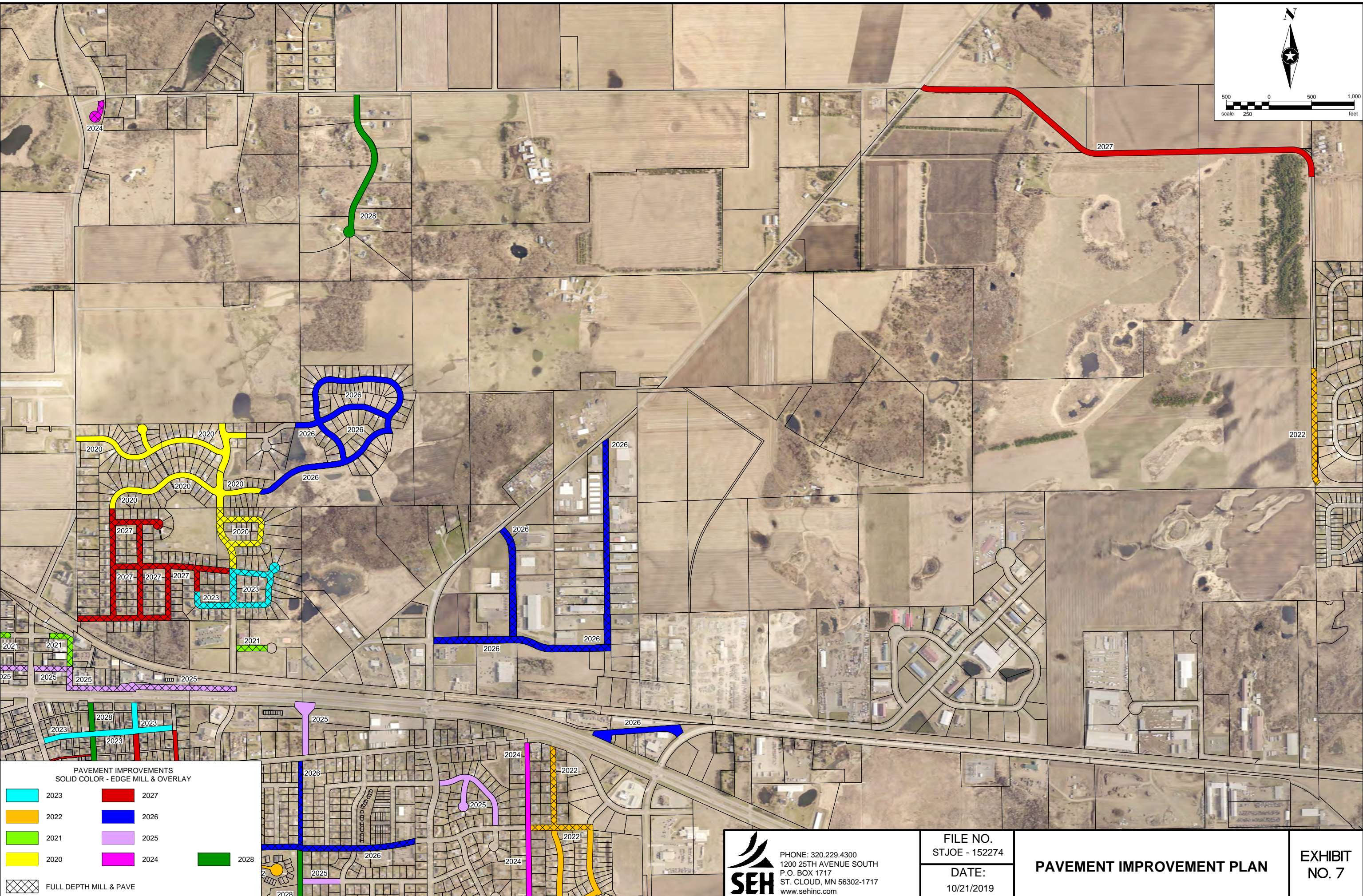


Building a Better World
for All of Us®

Engineers | Architects | Planners | Scientists



Save: 11/7/2019 6:28 AM dlandius Plot: 11/7/2019 2:01 PM P:\PT\ST\LOE\152274\5-final-8gpn\51-drawings\10-Civil\cad\dwg\sheet\SJ152274PL_Pavement_Improvement.dwg



PAVEMENT IMPROVEMENTS		
SOLID COLOR - EDGE MILL & OVERLAY		
■	2023	■ 2027
■	2022	■ 2026
■	2021	■ 2025
■	2020	■ 2024
■	2028	
	FULL DEPTH MILL & PAVE	

SEH
 PHONE: 320.229.4300
 1200 25TH AVENUE SOUTH
 P.O. BOX 1717
 ST. CLOUD, MN 56302-1717
 www.sehinc.com

FILE NO. STJOE - 152274
DATE: 10/21/2019

PAVEMENT IMPROVEMENT PLAN

EXHIBIT NO. 7

Matt Glaesman, City of St. Cloud Projects

From: [Matt Glaesman](#)
To: [Strohfus, Mark GRE-MG](#); [Nate Keller](#)
Cc: [Randy J. Sabart](#)
Subject: RE: City Projects for Cumulative Impacts Analysis with ST-WW 69kV Rebuild
Date: Monday, March 27, 2023 4:44:55 PM
Attachments: [10 - Planning Analysis.pdf](#)

This email was sent by an external sender. Opening attachments or clicking links from untrusted sources may cause damage to you and Great River Energy.

Hello Mark – The project location map from St. Cloud’s most recent Capital Improvement Plan is attached. The CIP programs projects through the next 5 years and identifies Unprogrammed Priority Projects for the subsequent 5-10 years. Let us know any questions. Matt

From: Strohfus, Mark GRE-MG <MStrohfu@GREnergy.com>
Sent: Monday, March 27, 2023 11:38 AM
To: Nate Keller <nkeller@cityofstjoseph.com>; Matt Glaesman <Matt.Glaesman@ci.stcloud.mn.us>
Cc: Randy J. Sabart <rsabart@sehinc.com>
Subject: City Projects for Cumulative Impacts Analysis with ST-WW 69kV Rebuild

The Sender "Strohfus, Mark GRE-MG" <MStrohfu@GREnergy.com> is external to the St. Cloud email system. Use caution when replying and opening attachments/hyperlinks. St. Cloud IT Dept.

Nate and Matt,

Jamie MacAlister, DOC-Energy and Environmental Review and Analysis (EERA), has asked for a list of City/County projects that will take place in the vicinity of our transmission line rebuild project. She’d like responses by the end of the week (March 31).

She is interested in roads, water, sewer project within the next 5 years. It was my understanding that the 76rd Ave expansion was further out than this. I don’t recall the timeline for St. Cloud’s sewer or waterline on the east side of 73Rd Ave or St. Joe’s business/industrial park along the extended Westwood Parkway.

If you have maps for any upcoming projects, she’d like to see those too.

Feel free to call me with any questions.

Thanks,

Mark Strohfus

Project Manager, Transmission Permitting

12300 Elm Creek Boulevard

Maple Grove, MN 5536-4718

D: 763-445-5210

C: 612-961-9820