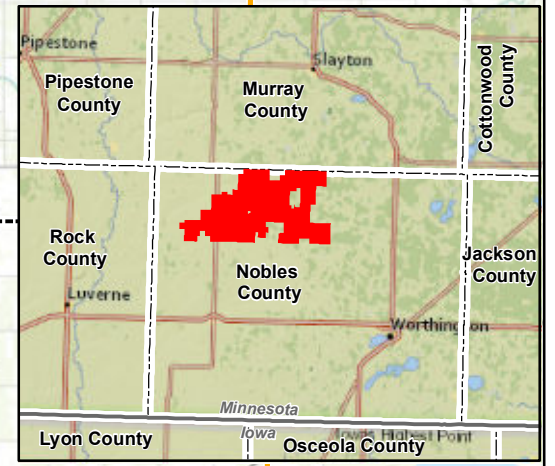
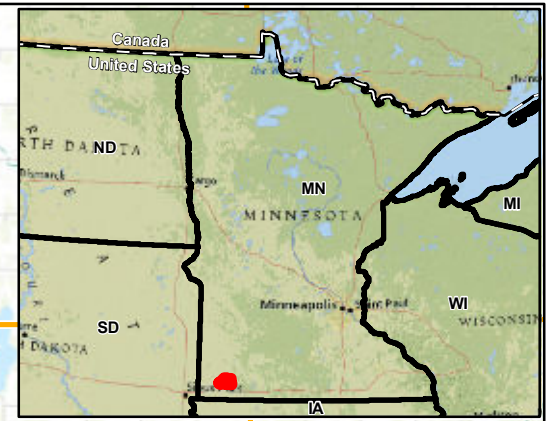
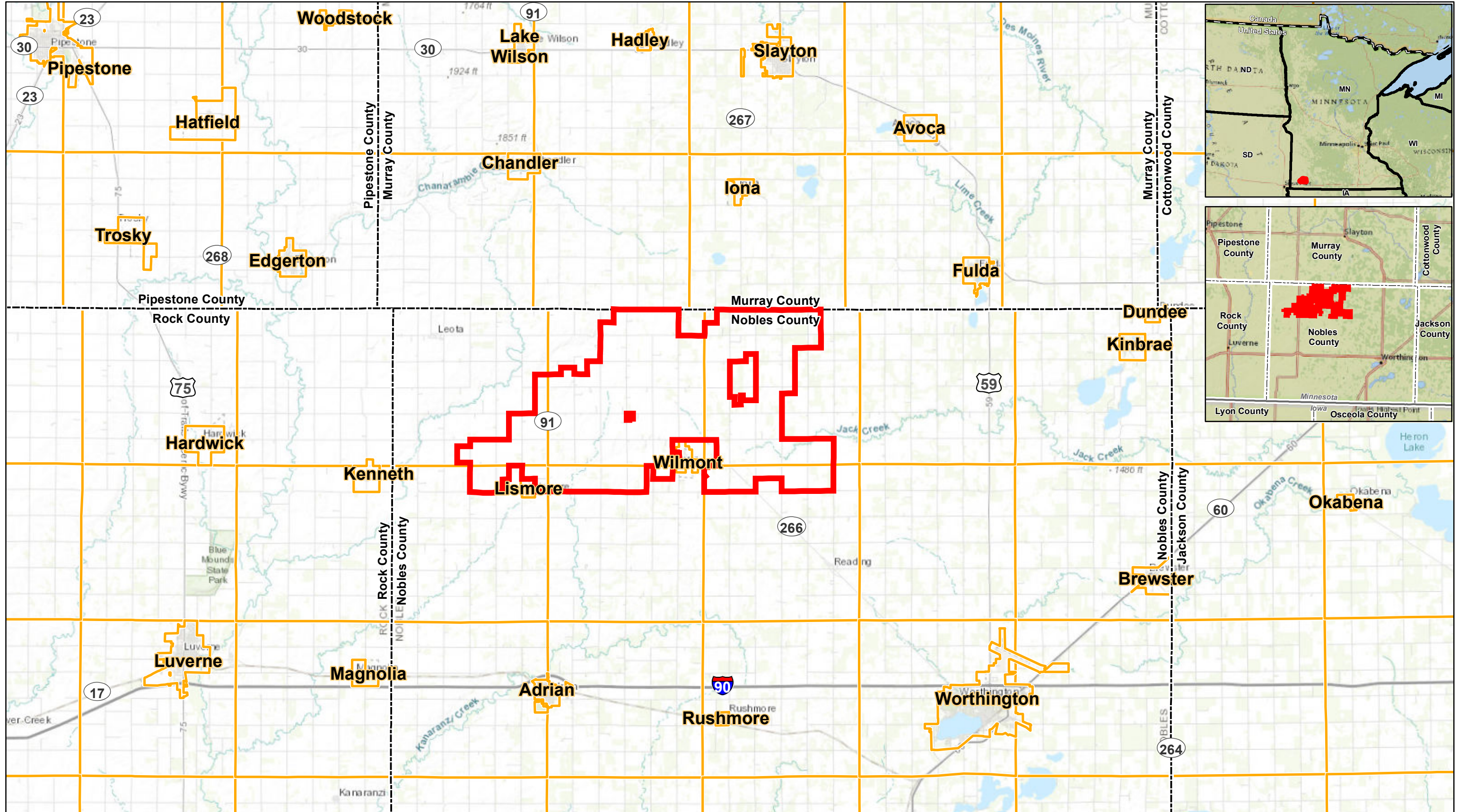


Appendix A. Maps 1-9



Data Source(s): Data and map are approximate.
 Westwood (2017); Geospatial Data Gateway (various dates); ESRI Basemap, Streets, Nat Geo, and Imagery (accessed 2018); ESRI (2012); MnDOT (various dates).

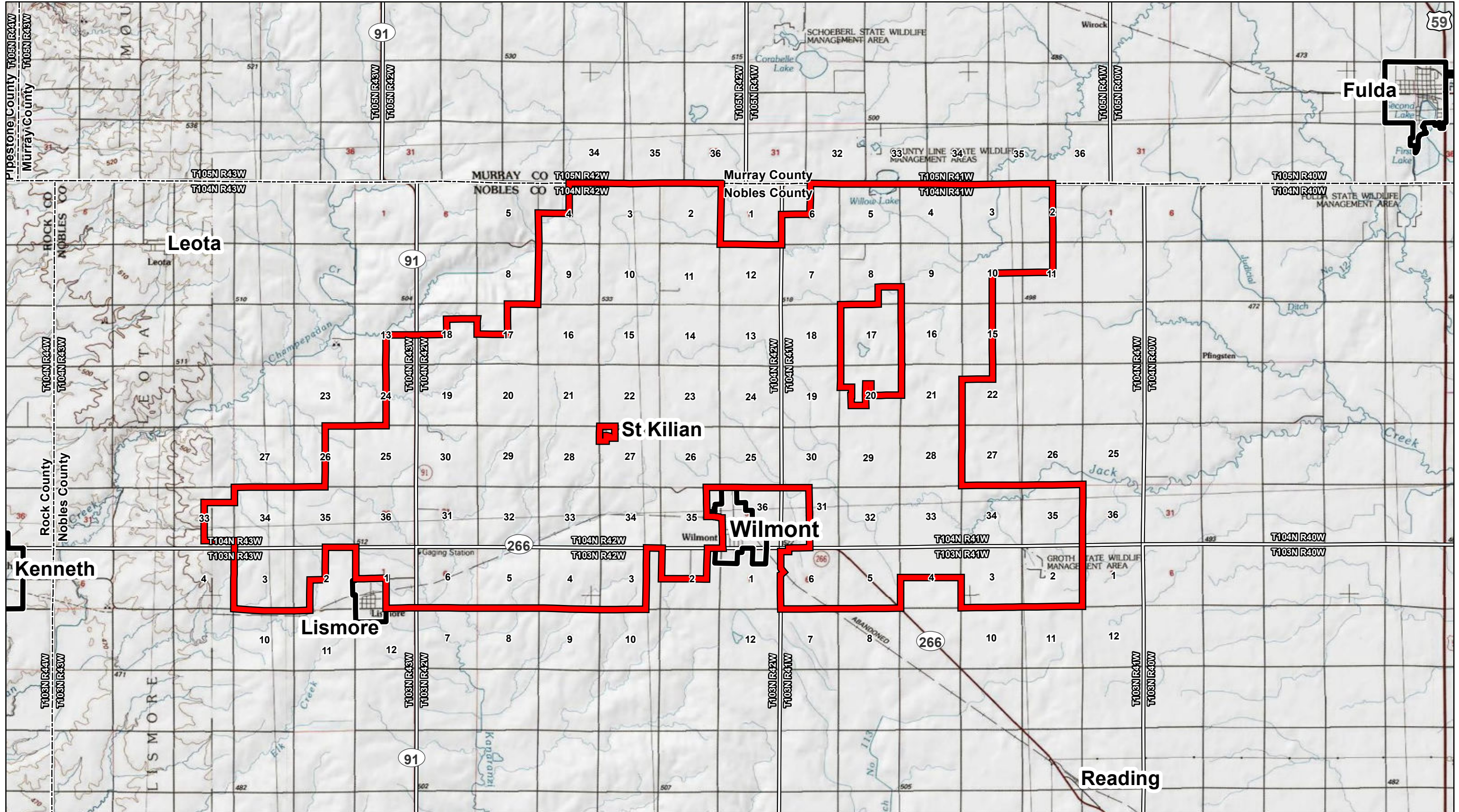


- Legend**
- Project Boundary
 - County Boundary
 - Municipal and Township Boundary



Nobles 2 Wind Project
 Nobles County, Minnesota
 Project Location
 Revised May 2018 - Map 1a

Map Document: N:\0001661_00\GIS\IS\ISPermit\Exhibits\N2_Map1a_180529.mxd, 5/29/2018, 3:06:44 PM



Data Source(s): Westwood (2017); Geospatial Data Gateway (various dates); NAIP Basemap, Imagery (accessed 2016); ESRI (2012); MnDOT (various dates); Data and map are approximate.

**NOBLES 2
POWER PARTNERS, LLC**

Westwood
Multi-Disciplinary
Surveying & Engineering

Legend

- Project Boundary
- PLS Township Boundary
- County Boundary
- Municipal Boundary



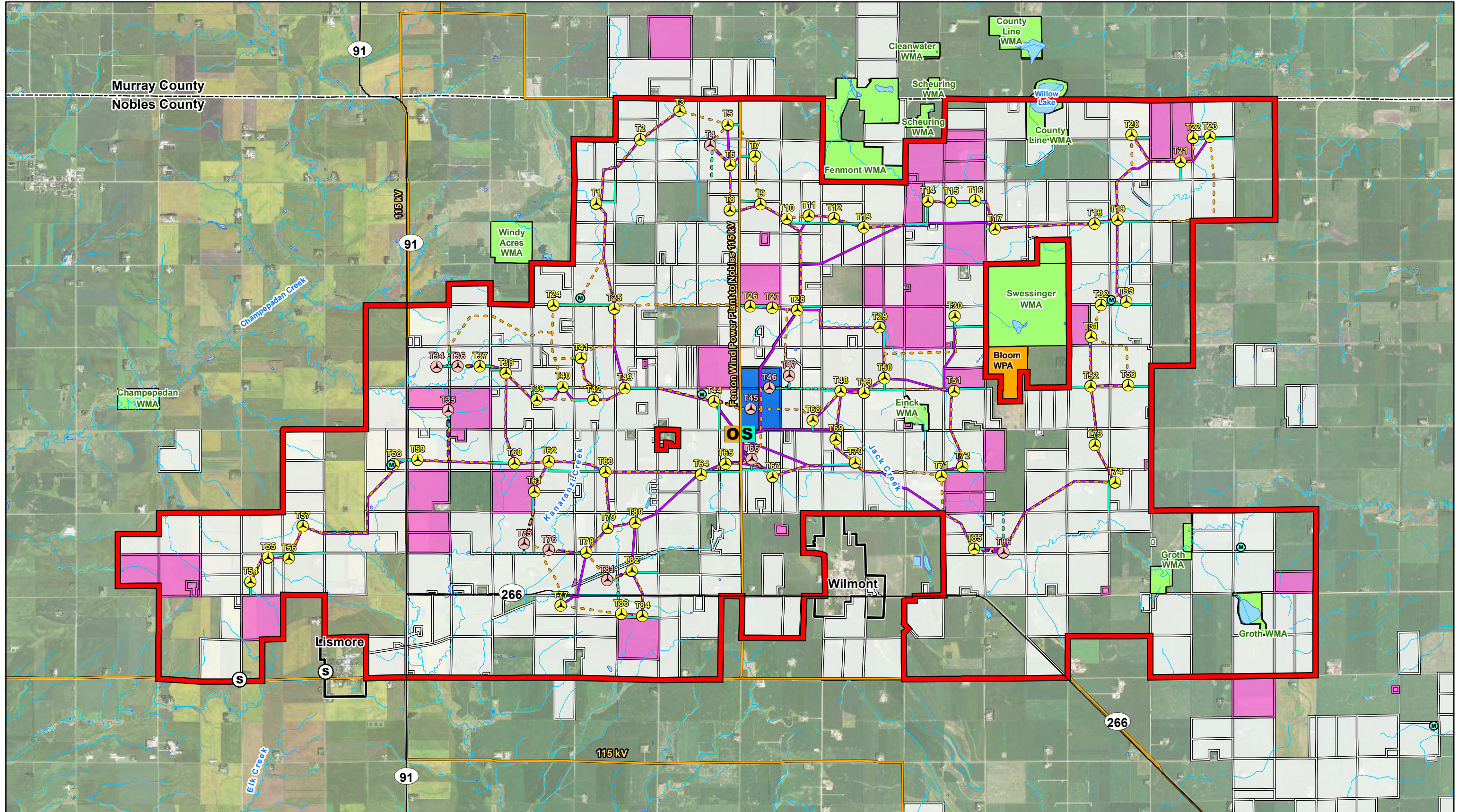
Nobles 2 Wind Project

Nobles County, Minnesota

Project Area

Revised May 2018 - Map 1b

Map Document: N:\0001661\GIS\Permit\Exhibits\N2_Map1b_180530.mxd, Project Location: 5/30/2018, 1:30:03 PM



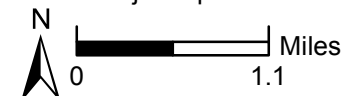
Data Source(s): Westwood (2017); Minnesota NAIP Imagery (Accessed 2017); ESRI (2012); USGS NHD Dataset (2013); MNDNR (Various Dates); BWSR (2010); Census Bureau (2015); Ventyx Velocity Suite; Ventyx Energy LLC. (2017). Data and map are approximate.

NOBLES 2 POWER PARTNERS, LLC
 Westwood
 Multi-Disciplined
 Surveying & Engineering

Legend

- | | | | | |
|----------------------------|---------------------|--------------------------------|---|---------------------------------|
| Project Boundary | Proposed O&M | Proposed Access Road | Existing Substation (Location Approximate) | Participating Leased Land |
| County Boundary | Proposed Substation | Proposed Access Road Alternate | Existing Transmission Line (Location Approximate) | Potential Participating Land** |
| Proposed Turbine | Road | Proposed Collection | NHD Flowline | Waterfowl Production Area (WPA) |
| Proposed Turbine Alternate | Municipal Boundary | Proposed Collection Alternate | NHD Waterbody | Wildlife Management Area (WMA) |
| Temporary Met Tower | | Proposed Crane Path | | |

Note: Project up to 260MW.



** Potential Participating Land consists of land that is the subject of ongoing landowner lease negotiations. Nobles 2 will update the map when owners of Potential Participating Land sign lease agreements and the land becomes Participating Land.

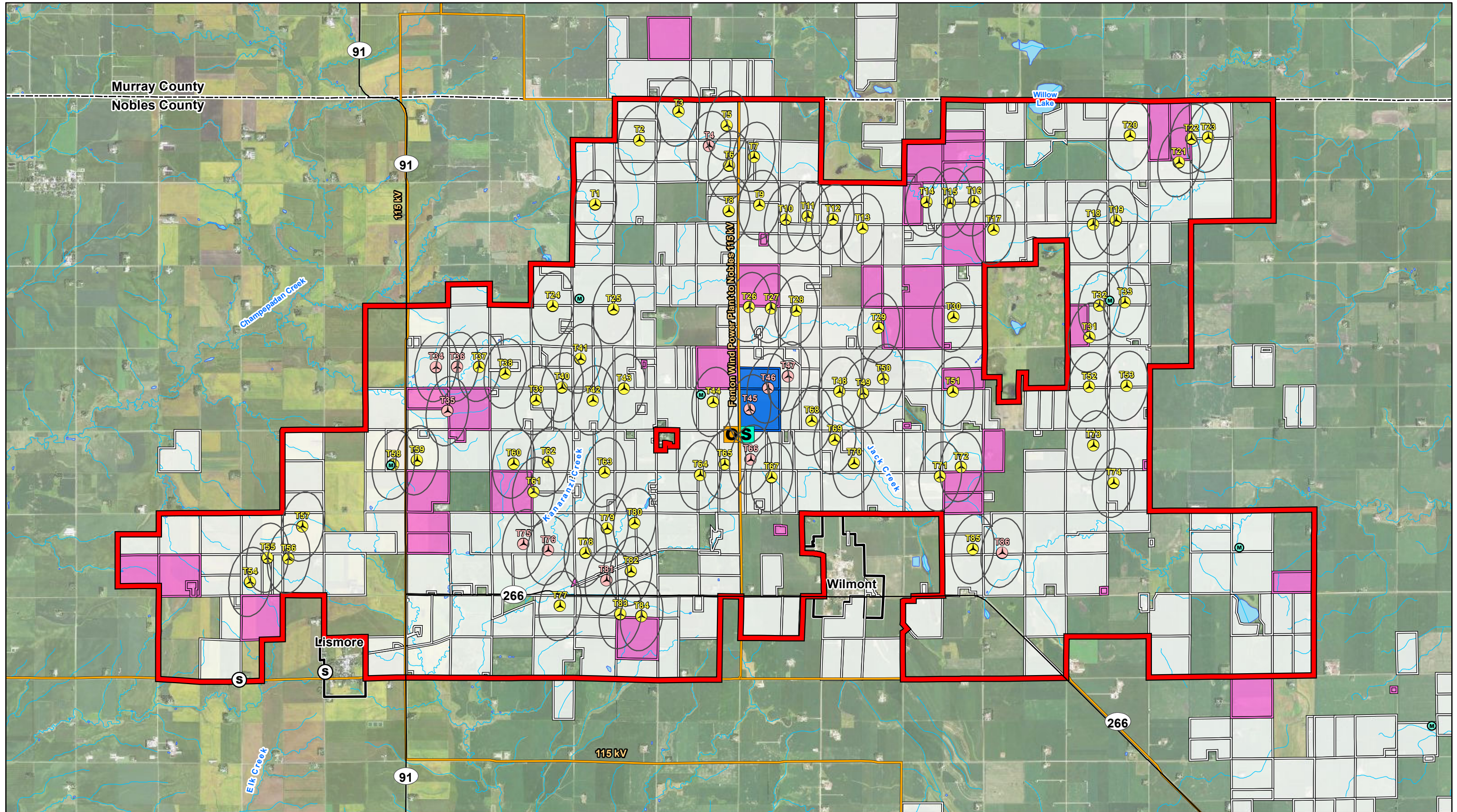
Nobles 2 Wind Project

Nobles County, Minnesota

Project Area and Participating Land

Revised May 2018 - Map 2a

Map Document: N:\0001661\GIS\Permit\Exhibits\N2_ProjectAreaAndLandParcelAnde_Map2a_180529.mxd, 5/29/2018, 12:20:09 PM



Data Source(s): Westwood (2017); Minnesota NADIP Imagery (Accessed 2017); ESRI (2012); USGS NHD Dataset (2013); MNDNR (Various Dates); BWSR (2010); Census Bureau (2015); Ventyx Velocity Suite; Ventyx Energy LLC (2017). Data and map are approximate.

NOBLES 2 POWER PARTNERS, LLC

Westwood
Multi-Disciplined
Surveying & Engineering

Legend

- | | | | |
|----------------------------|---------------------|---|--------------------------------|
| Project Boundary | Proposed O&M | Existing Substation (Location Approximate) | Participating Wind Rights Land |
| County Boundary | Proposed Substation | Existing Transmission Line (Location Approximate) | Potential Participating Land** |
| Proposed Turbine | Wind Access Buffer | NHD Flowline | |
| Proposed Turbine Alternate | Road | NHD Waterbody | |
| Temporary Met Tower | Municipal Boundary | | |

Note: Project up to 260MW.



** Potential Participating Land consists of land that is the subject of ongoing landowner lease negotiations. Nobles 2 will update the map when owners of Potential Participating Land sign lease agreements and the land becomes Participating Land.

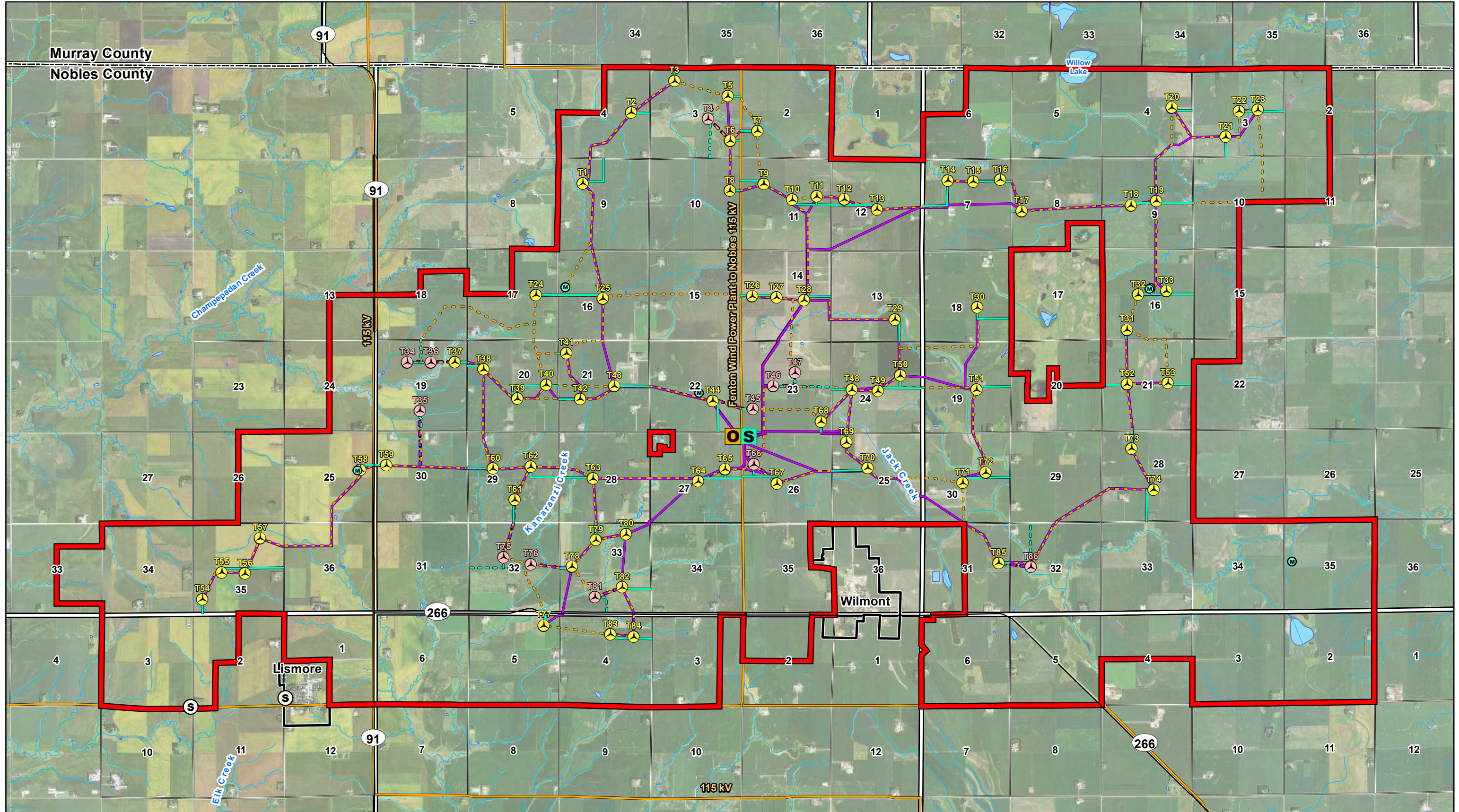
Nobles 2 Wind Project

Nobles County, Minnesota

Participating Land and
Wind Access Buffer

Revised May 2018 - Map 2b

Map Document: N:\0001661\GIS\Permit\Exhibits\N2_Leased_Lands\WindAccessBuffer_Map2b_180529.mxd 5/29/2018 12:26:14 PM



Data Source(s): Westwood (2017); Minnesota NAIP Imagery (Accessed 2016); ESRI (2012); USGS NHD Dataset (2013); MNDNR (Various Dates); BWSR (2010); Census Bureau (2015); Ventyx Velocity Suite; Ventyx Energy LLC. (2017). Data and map are approximate.

NOBLES 2 POWER PARTNERS, LLC
 Westwood
 Multi-Disciplined
 Surveying & Engineering

Legend

Project Boundary	Proposed O&M	Proposed Access Road	Existing Substation (Location Approximate)	PLS Township Boundary
County Boundary	Proposed Substation	Proposed Access Road Alternate	Existing Transmission Line (Location Approximate)	PLS Section Boundary
Proposed Turbine	Road	Proposed Collection	NHD Flowline	
Proposed Turbine Alternate	Municipal Boundary	Proposed Collection Alternate	NHD Waterbody	
Temporary Met Tower		Proposed Crane Path		

Note: Project up to 260MW.

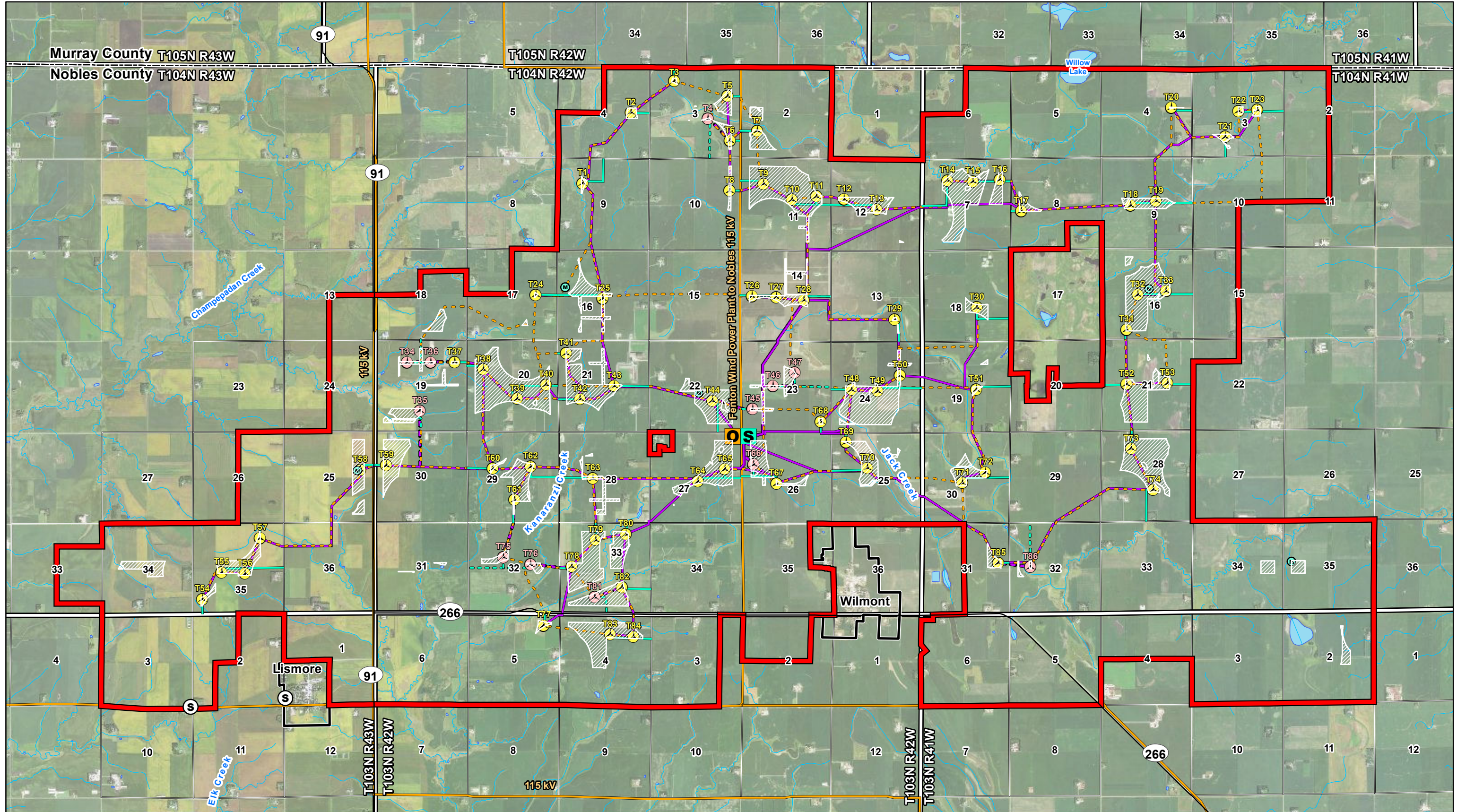
N
 0 1 Miles

Nobles 2 Wind Project
 Nobles County, Minnesota

Turbine Layout

Revised May 2018 - Map 3a

Map Document: N:\0001661\GIS\Permit\Exhibits\N2_V1367TurbineLayout_Map3a_180529.mxd 5/29/2018 12:33:56 PM



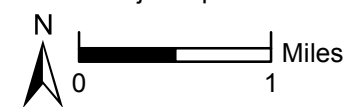
Data Source(s): Westwood (2017); Minnesota NAIP Imagery (Accessed 2016); ESRI (2012); USGS NHD Dataset (2013); MNDNR (Various Dates); BWSR (2010); Census Bureau (2015); Ventyx Velocity Suite, Ventyx Energy LLC. (2017). Data and map are approximate.

NOBLES 2 POWER PARTNERS, LLC
 Westwood
 Multi-Disciplined
 Surveying & Engineering

Legend

- Project Boundary
- County Boundary
- ⚡ Proposed Turbine
- ⚡ Proposed Turbine Alternate
- ⚡ Temporary Met Tower
- Proposed O&M
- Proposed Substation
- Road
- Municipal Boundary
- Proposed Access Road
- Proposed Access Road Alternate
- Proposed Collection
- Proposed Collection Alternate
- Proposed Crane Path
- Existing Substation (Location Approximate)
- Existing Transmission Line (Location Approximate)
- NHD Flowline
- NHD Waterbody
- PLS Township Boundary
- PLS Section Boundary
- Turbine Buildable Area (areas not restricted by required setbacks or other constraints)**

Note: Project up to 260MW.



** The Turbine Buildable Area shown underlying and near Turbines T22, T45, T46, and T62 represent the buildable area that will exist when leases are secured for the land identified in Map 2 as subject to ongoing landowner lease negotiations.

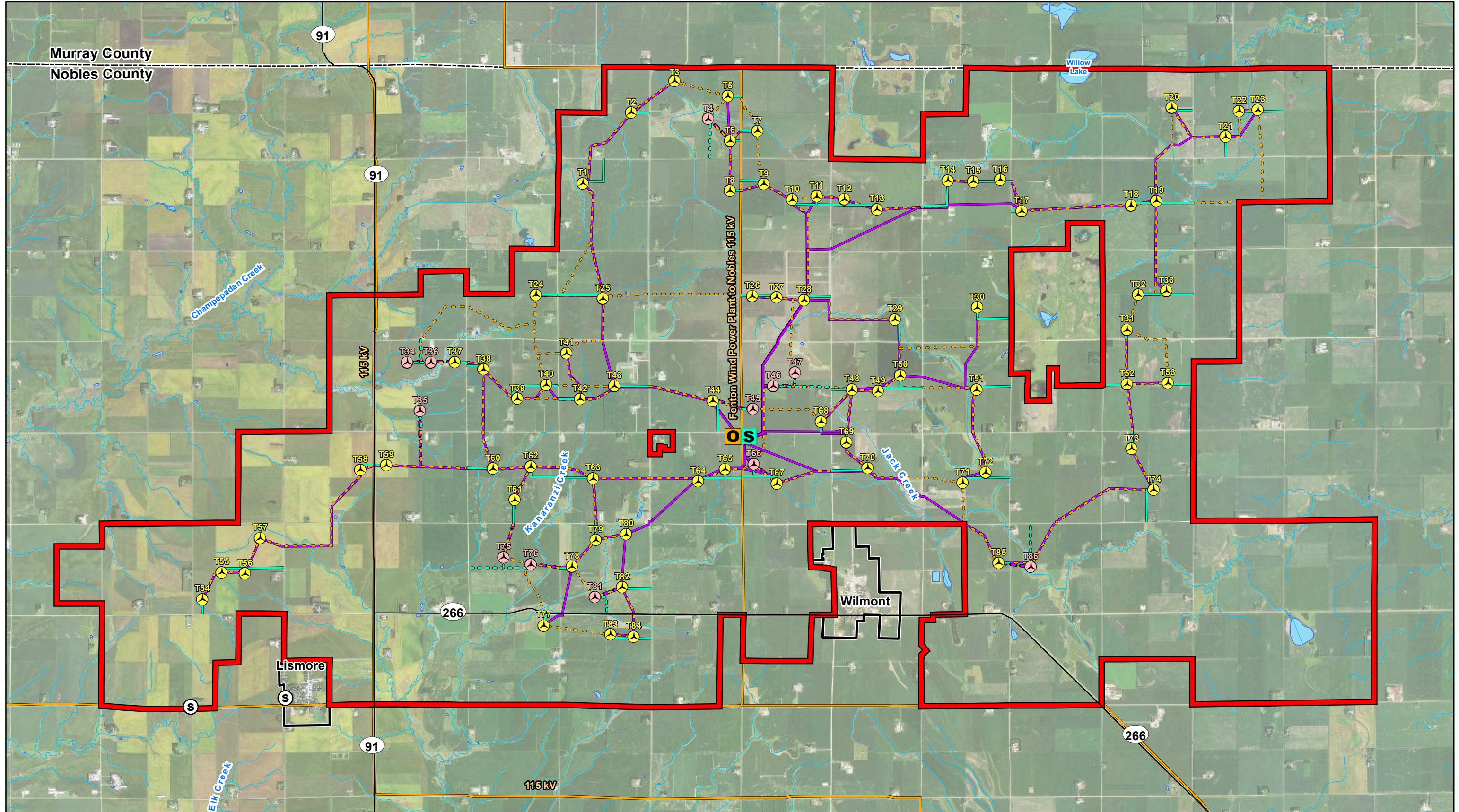
Nobles 2 Wind Project

Nobles County, Minnesota

Turbine Layout and Constraints

Revised May 2018 - Map 3b

Map Document: N:\0001661\GIS\Permit\Exhibits\N2_V1367\TurbineLayoutAndConstraints_Map3b_160529.mxd 5/29/2018 12:40:20 PM



Data Source(s): Westwood (2017); Minnesota NAIP Imagery (Accessed 2016); ESRI (2012); USGS NHD Dataset (2013); MNDNR (Various Dates); BWSR (2010); Census Bureau (2015); Ventyx Velocity Suite, Ventyx Energy LLC. (2017). Data and map are approximate.

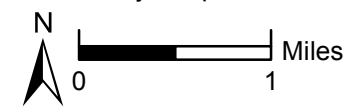
NOBLES 2 POWER PARTNERS, LLC

Westwood
Multi-Disciplined
Surveying & Engineering

Legend

- Project Boundary
- County Boundary
- ⬤ Proposed Turbine
- ⬤ Proposed Turbine Alternate
- Proposed O&M
- Proposed Substation
- Road
- Municipal Boundary
- Proposed Access Road
- Proposed Access Road Alternate
- Proposed Collection
- Proposed Collection Alternate
- Proposed Crane Path
- Existing Substation (Location Approximate)
- Existing Transmission Line (Location Approximate)
- NHD Flowline
- NHD Waterbody

Note: Project up to 260MW.

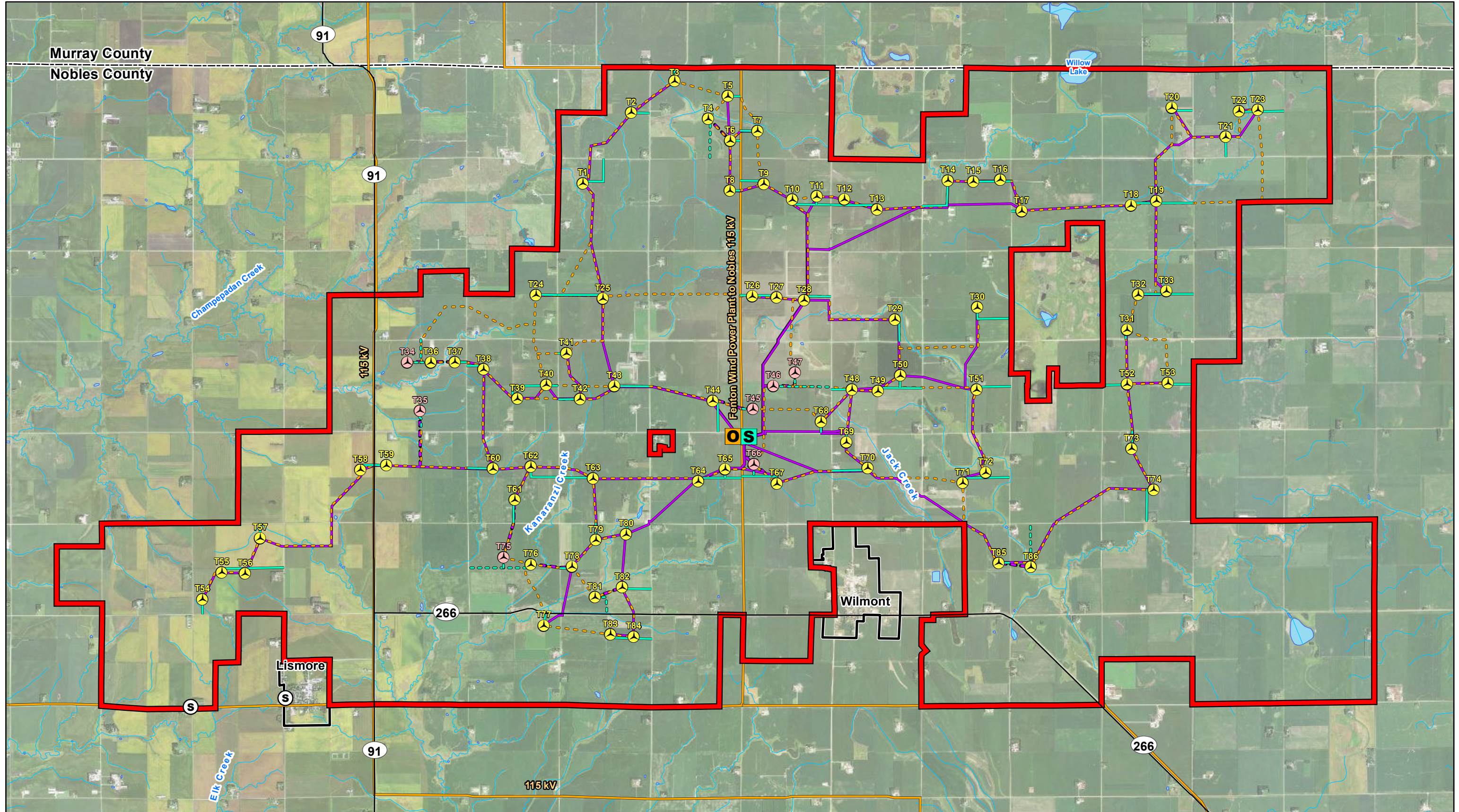


Nobles 2 Wind Project

Nobles County, Minnesota

74 Turbine Installation: 64 x Vestas V136-3.6 & 10 x Vestas V110-2.0

Revised May 2018 - Map 3c



Data Source(s): Westwood (2017); Minnesota NAIP Imagery (Accessed 2016); ESRI (2012); USGS NHD Dataset (2013); MNDNR (Various Dates); BWSR (2010); Census Bureau (2015); Ventyx Velocity Suite, Ventyx Energy LLC. (2017). Data and map are approximate.

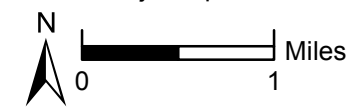
NOBLES 2 POWER PARTNERS, LLC

Westwood
Multi-Disciplined
Surveying & Engineering

Legend

- Project Boundary
- County Boundary
- ⚡ Proposed Turbine
- ⚡ Proposed Turbine Alternate
- Proposed O&M
- S Proposed Substation
- Road
- Municipal Boundary
- Proposed Access Road
- Proposed Access Road Alternate
- Proposed Collection
- Proposed Collection Alternate
- Proposed Crane Path
- Existing Substation (Location Approximate)
- Existing Transmission Line (Location Approximate)
- NHD Flowline
- NHD Waterbody

Note: Project up to 260MW.

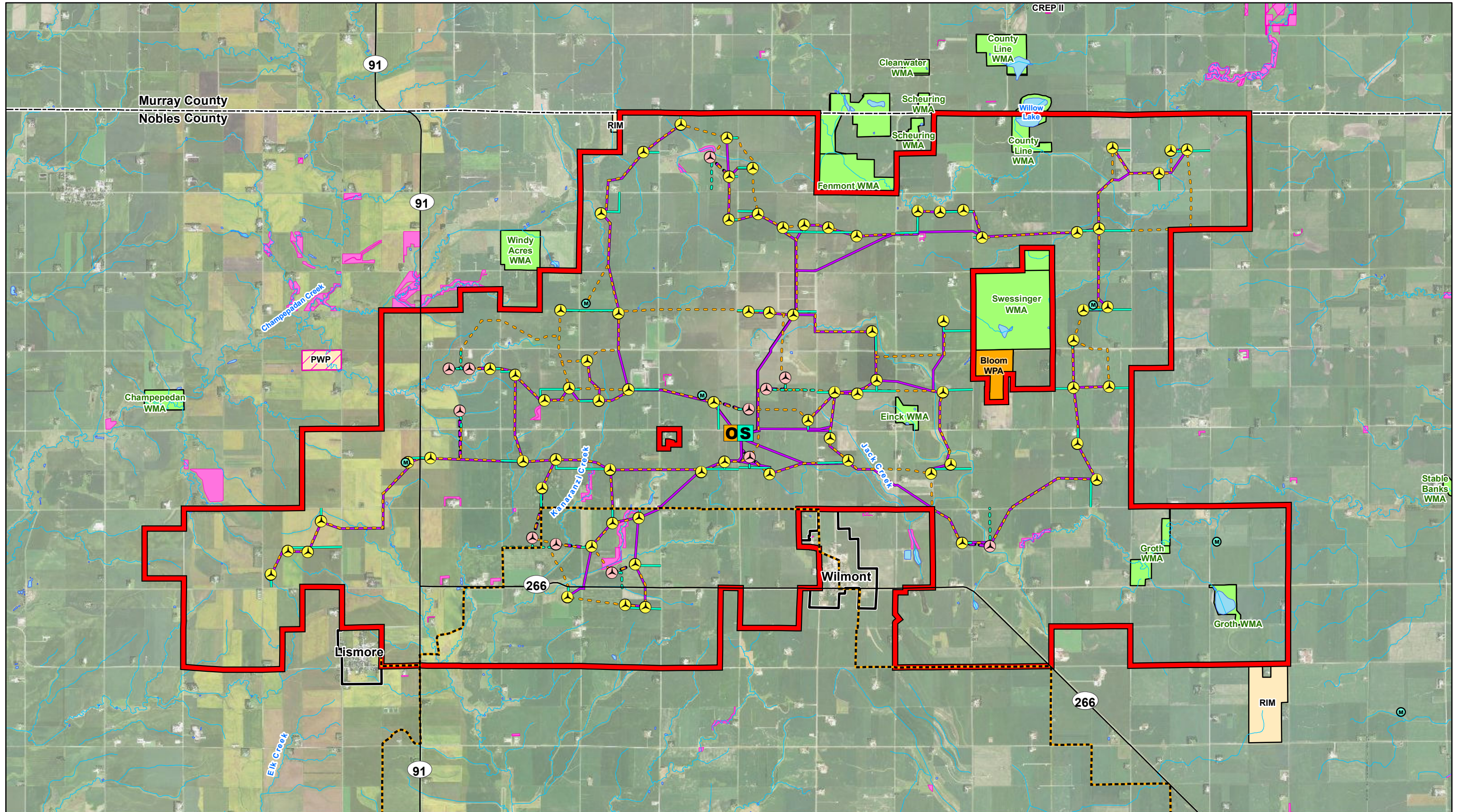


Nobles 2 Wind Project

Nobles County, Minnesota

79 Turbine Installation: 58 x Vestas V136-3.6 & 21 x Vestas V110-2.0

Revised May 2018 - Map 3d



Data Source(s): Westwood (2017); Minnesota NAIIP Imagery (Accessed 2016); ESRI (2012); USGS NHD Dataset (2013); MNDNR (Various Dates); BWSR (2010); Census Bureau (2015). Data and map are approximate.

NOBLES 2 POWER PARTNERS, LLC
 Westwood
 Multi-Disciplined
 Surveying & Engineering

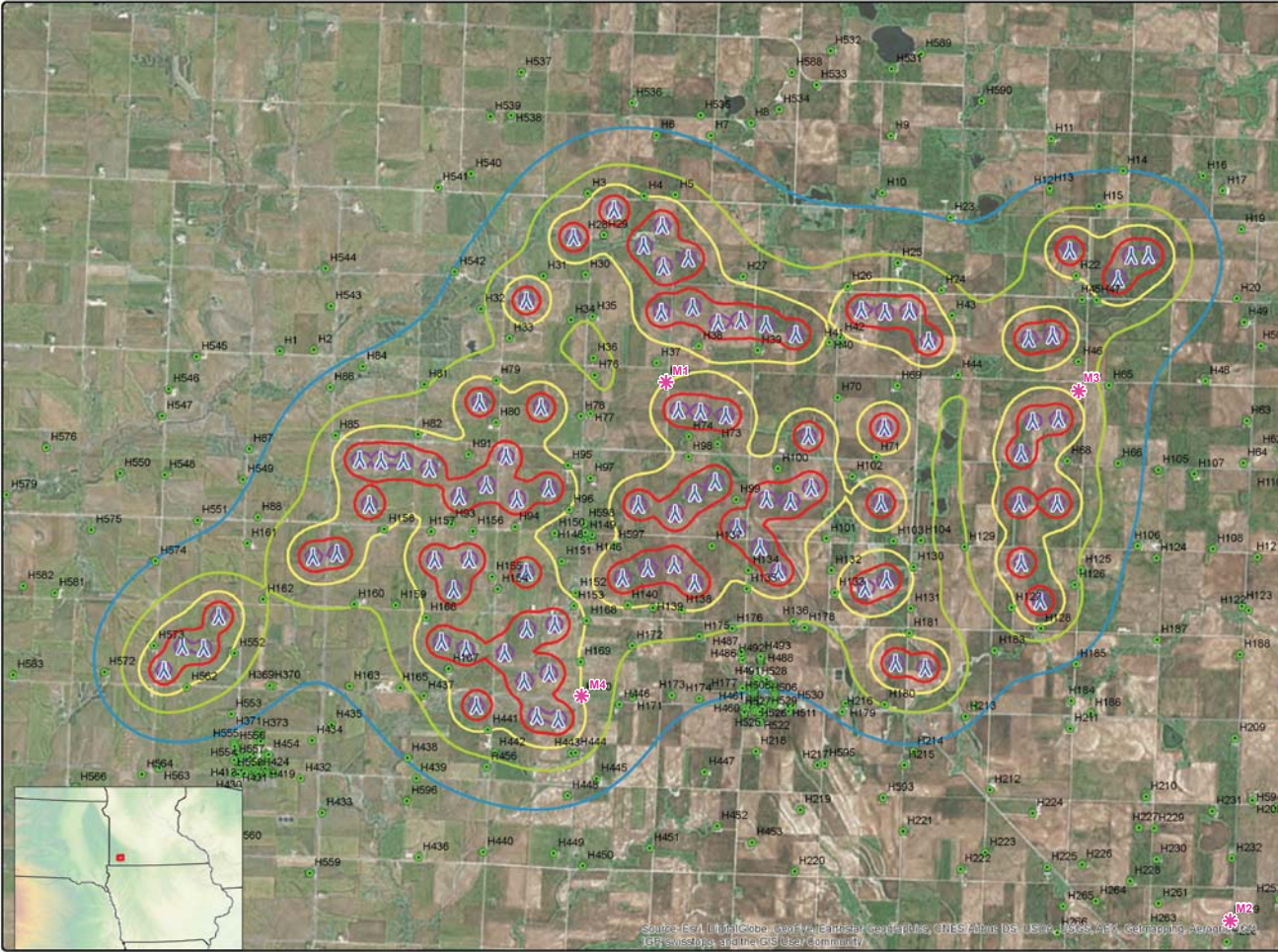
Legend	
Project Boundary	Proposed O&M
County Boundary	Proposed Substation
Proposed Turbine	Proposed Access Road
Proposed Turbine Alternate	Proposed Access Road Alternate
Temporary Met Tower	Proposed Collection Road
Municipal Boundary	Proposed Collection Road Alternate
Conservation Reserve Program (CRP) - Active	Proposed Crane Path
Waterfowl Production Area (WPA)	Conservation Easement
Wildlife Management Area (WMA)	NHD Flowline
Reinvest in Minnesota (RIM) Reserve	NHD Waterbody


Note: Current CRP data are not available. There may be additional CRP lands that are not shown.



Nobles 2 Wind Project
 Nobles County, Minnesota
 Recreation, Wildlife, &
 Protected Areas
 Revised May 2018 - Map 5

Map Document: N:\0001661\GIS\Permit\Exhibits\N2_RecreationWildlife&ProtectedAreas_Map5_180529.mxd 5/29/2018 1:52:12 PM





www.eapc.net | 701.775.3000

**Nobles 2 Wind Farm
Noise Results
Vestas V136 3.6 MW 82 m HH**

Client
Westwood

Project Description
Noise Analysis for V136 82m HH WTGs. Realistic case noise map. Assumes 108.2 dB(A) at 10 m/s at an 82 m hub height, and ISO 9613-2 noise Standard General with 0.5 ground attenuation. Ambient background noise not included.

Location: Wilmont, MN
Project #: 20162550

Issue Dates

1 Original	2017 07 25
# Description	Date

Drawn By: JH Checked By: JH

Legend

- * Ambient Monitoring Location
- Occupied Residences
- ▲ V136 3.6MW Turbines

Sound Level (dB(A))

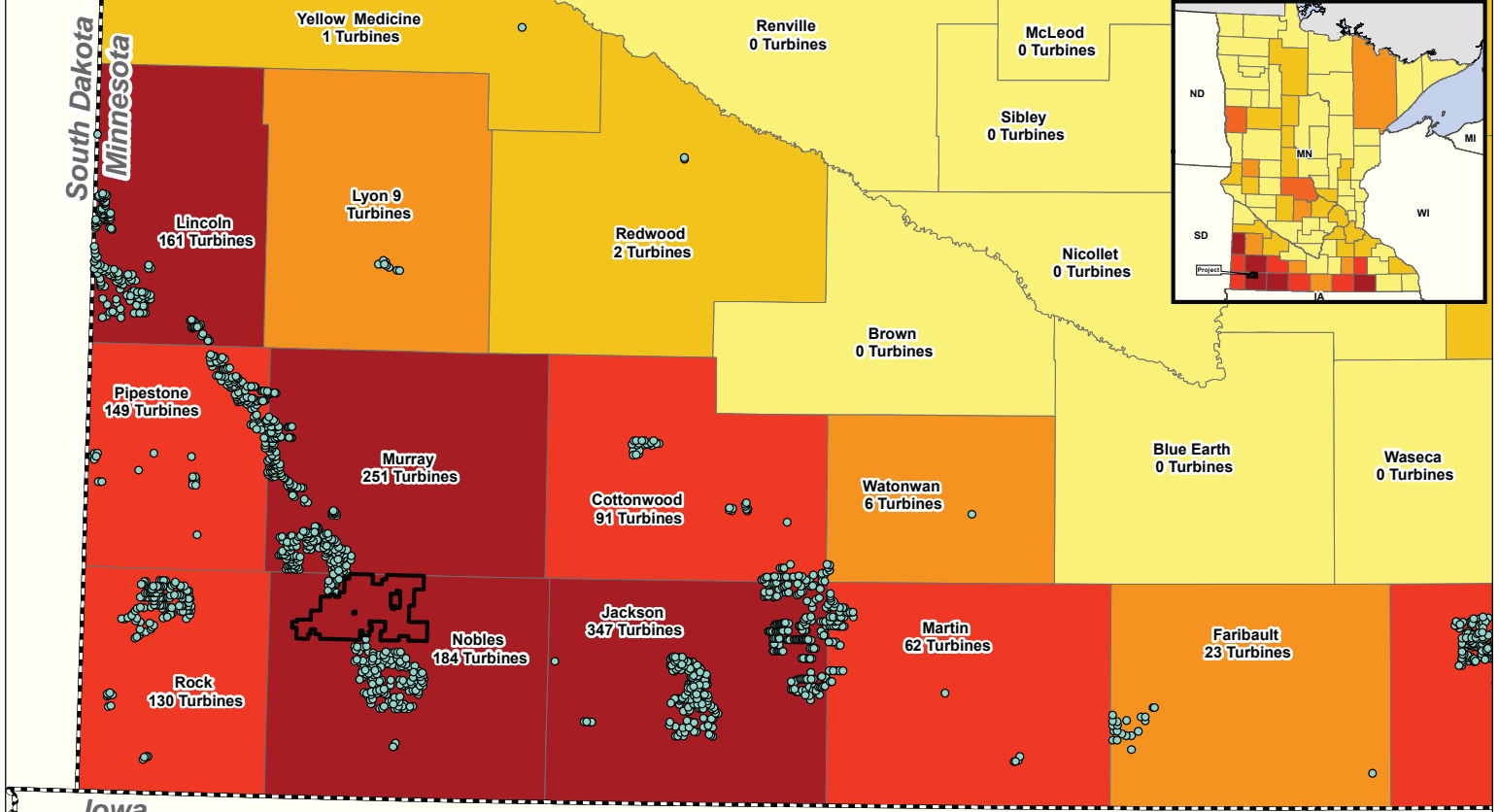
- 35
- 40
- 45
- 50
- 55

Map 6

COPYRIGHT:
All maps, plans, specifications, computer files, field data, notes and other documents and instruments prepared by EAPC as instruments of service shall remain the property of EAPC. EAPC shall retain all common law, statutory and other reserved rights, including the copyright therein.



Neither EAPC nor any person acting on their behalf (a) makes any warranty, express or implied, with respect to the use of any information disclosed on this drawing, or (b) assumes any liability with respect to the use of any information or methods disclosed on this drawing. Any recipient of this document, by their acceptance or use of this document, releases EAPC, its parent corporations and its affiliates, from any liability for direct, indirect, consequential, or special loss or damage whether arising in contract, warranty, express or implied, tort or otherwise, and irrespective of fault, negligence, and strict liability. The responsibilities for the applications and use of the material contained in this document remain solely with the client.



South Dakota
Minnesota
Iowa

Map Sources: Westwood (2017), ESRI (2012), UNDRR (2015), Verity Velocity Suite, Verity Energy LLC/RES, Inc. (2017). Data and map are approximate.

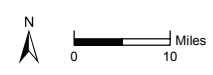
NOBLES 2 POWER PARTNERS, LLC
Westwood

Legend

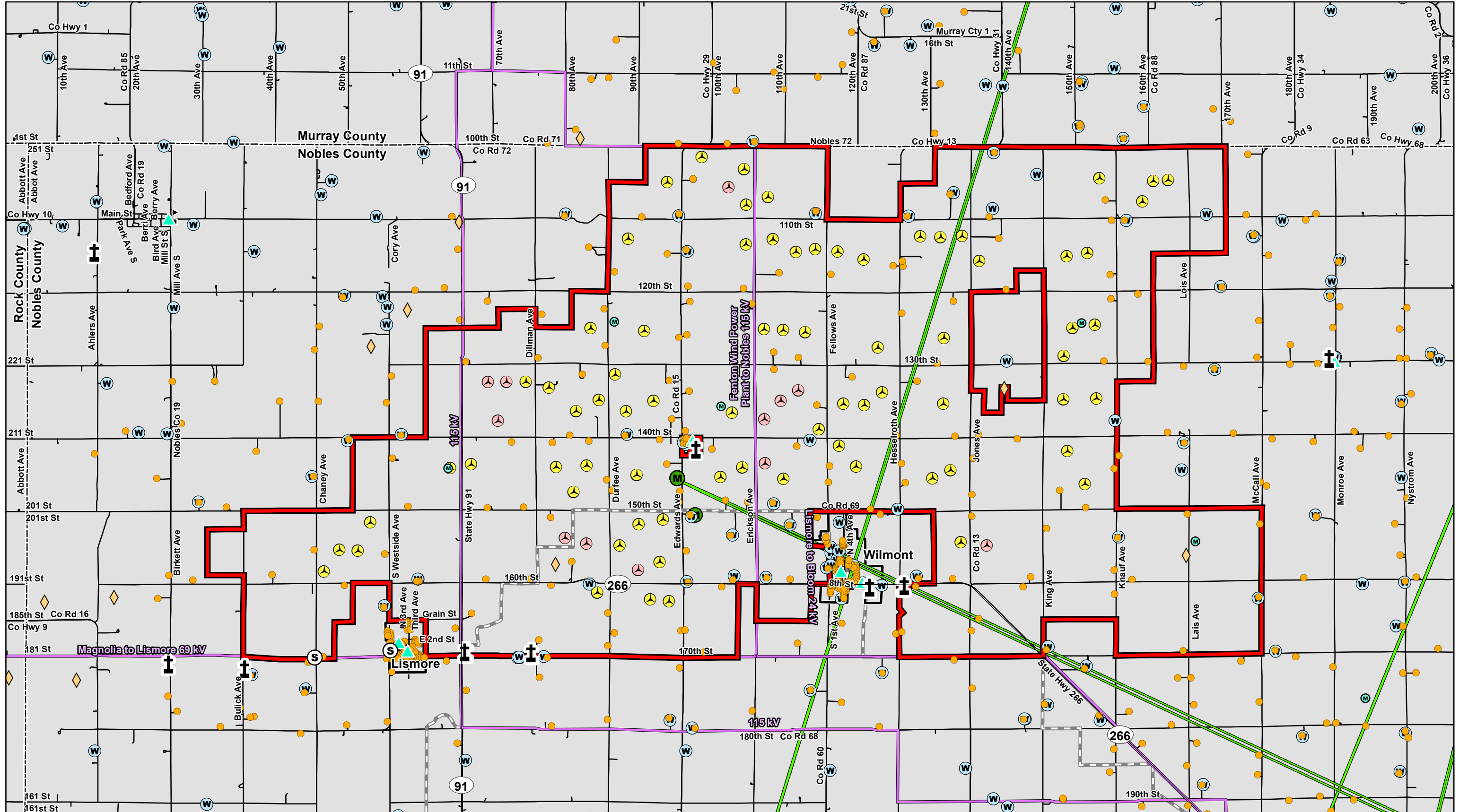
- Project Boundary
- Existing Turbines
- State Boundary

Turbines By County

0	26 - 50
1 - 5	51 - 150
6 - 25	151 - 381



Nobles 2 Wind Project
Nobles County, Minnesota
Existing Wind Turbine Locations



- Legend**
- Project Boundary
 - County Boundary
 - Municipal Boundary
 - Road
 - Snowmobile Trail
 - Well Location
 - ▲ Proposed Turbine
 - ▲ Proposed Turbine Alternate
 - Temporary Met Tower
 - Dwelling
 - ▲ Church
 - ◆ Gravel Pit
 - ⚰ Cemetery
 - ▲ School
 - Microwave Tower
 - Existing Substation (Location Approximate)
 - Existing Transmission Line (Location Approximate)
 - Fresnel Zone

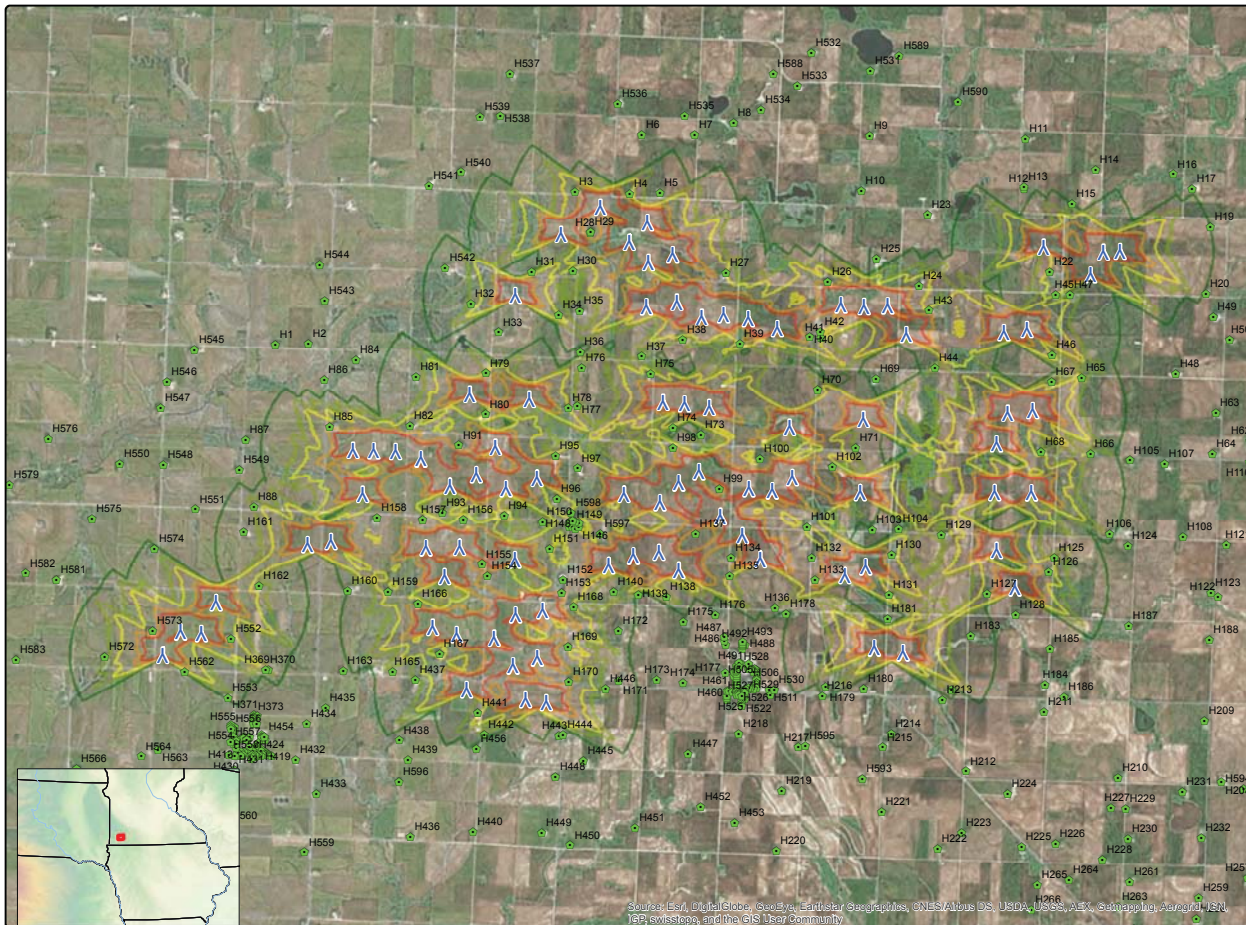


Nobles 2 Wind Project
 Nobles County, Minnesota
Existing Infrastructure
 Revised May 2018 - Map 8

NOBLES 2 POWER PARTNERS, LLC
 Westwood
 Multi-Disciplined
 Surveying & Engineering

Map Document: N:\0001661_00\GIS\SitePermit\E:\shibiki\N2_Infrastructure\Map_Map8_180529.mxd 5/29/2018 3:15:47 PM

Data Source(s): Westwood (2017); ESRI (2012); Ventyx Velocity Suite; Ventyx Energy LLC. (2015); MNDNR (2010); U.S. Geographic Names Information System Schools (2014); Minnesota Geological Survey (2011); U.S. Geographic Names Information System Cemeteries (2005); Census Bureau (2015). Data and map are approximate.



www.eapc.net | 701.775.3000

**Nobles 2 Wind Farm
Shadow Flicker Results
Vestas V136 3.6 MW 82 m HH**

Client
Westwood

Project Description
Shadow Flicker for Vestas V136 82 m HH WTGs. Realistic shadow flicker map and data at receptors (hrs/yr). Assumes statistical reduction due to sunshine probability, turbine orientation and operation probability. Sensors in "greenhouse" mode. No obstacles assumed.

Location: Wilmont, MN
Project #: 20162550

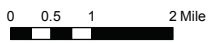
Issue Dates	
#	Date
1	Original 2017.07.25
Drawn By: JH Checked By: JH	

Legend

- Occupied Residences
- ▲ V136 3.6MW Turbines
- Hrs/yr**
- 0
- 5
- 10
- 30
- 50

Map 9

COPYRIGHT:
All maps, plans, specifications, computer files, field data, notes and other documents and instruments prepared by EAPC as instruments of service shall remain the property of EAPC. EAPC shall retain all common law, statutory and other reserved rights, including the copyright therein.



Neither EAPC nor any person acting on their behalf: (a) makes any warranty, express or implied, with respect to the use of any information disclosed on this drawing; or (b) assumes any liability with respect to the use of any information or methods disclosed on this drawing. Any recipient of this document, by their acceptance or use of this document, releases EAPC, its parent corporations and its affiliates, from any liability for direct, indirect, consequential, or special loss or damage whether arising in contract, warranty, express or implied, tort or otherwise, and irrespective of fault, negligence, and strict liability. The responsibilities for the applications and use of the material contained in this document remain solely with the client.