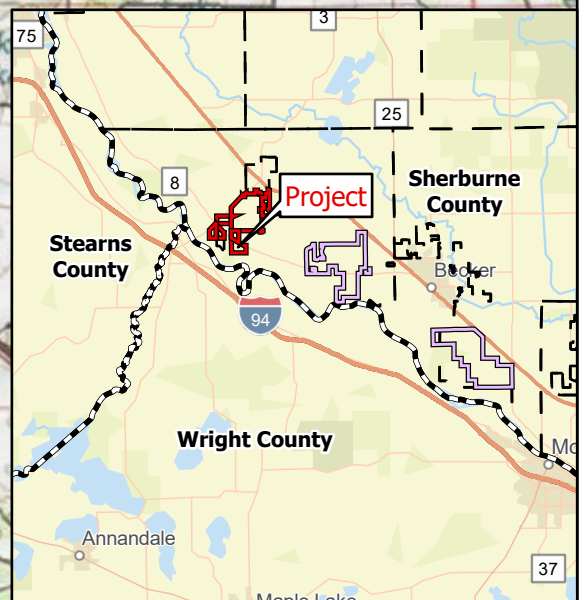
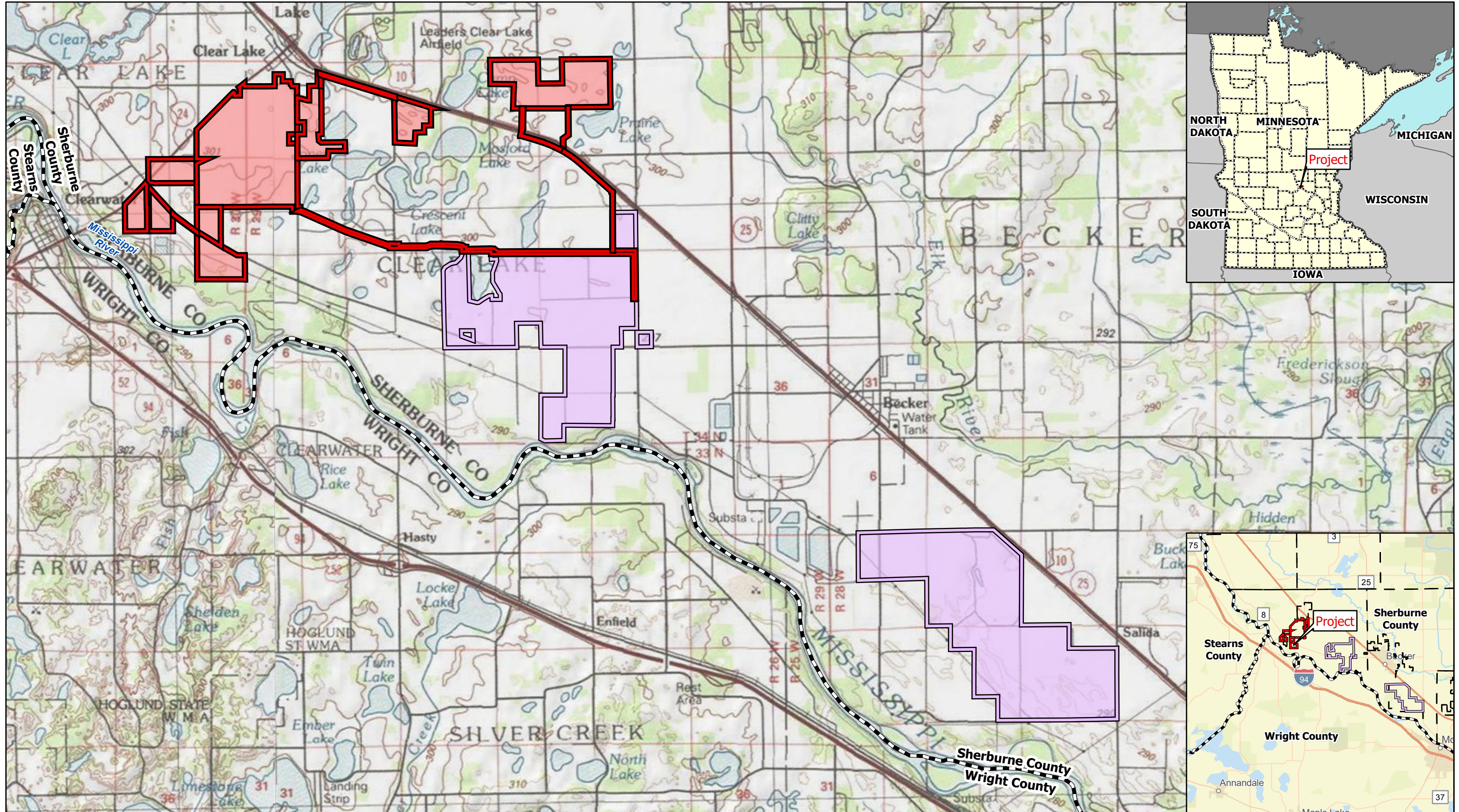
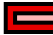




Exhibits



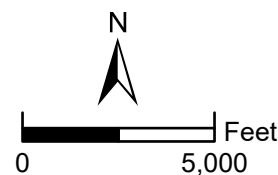
Data Source(s): Westwood (2023); ESRI WMS
 USGS Topographic & World Streets Basemaps
 (Accessed 2023); U.S. Census Bureau (2021).

Legend

-  Sherco Solar 3 Project Area
-  Sherco Solar Project
-  County Boundary

Westwood

Toll Free (888) 937-5150 westwoodsps.com
 Westwood Professional Services, Inc.

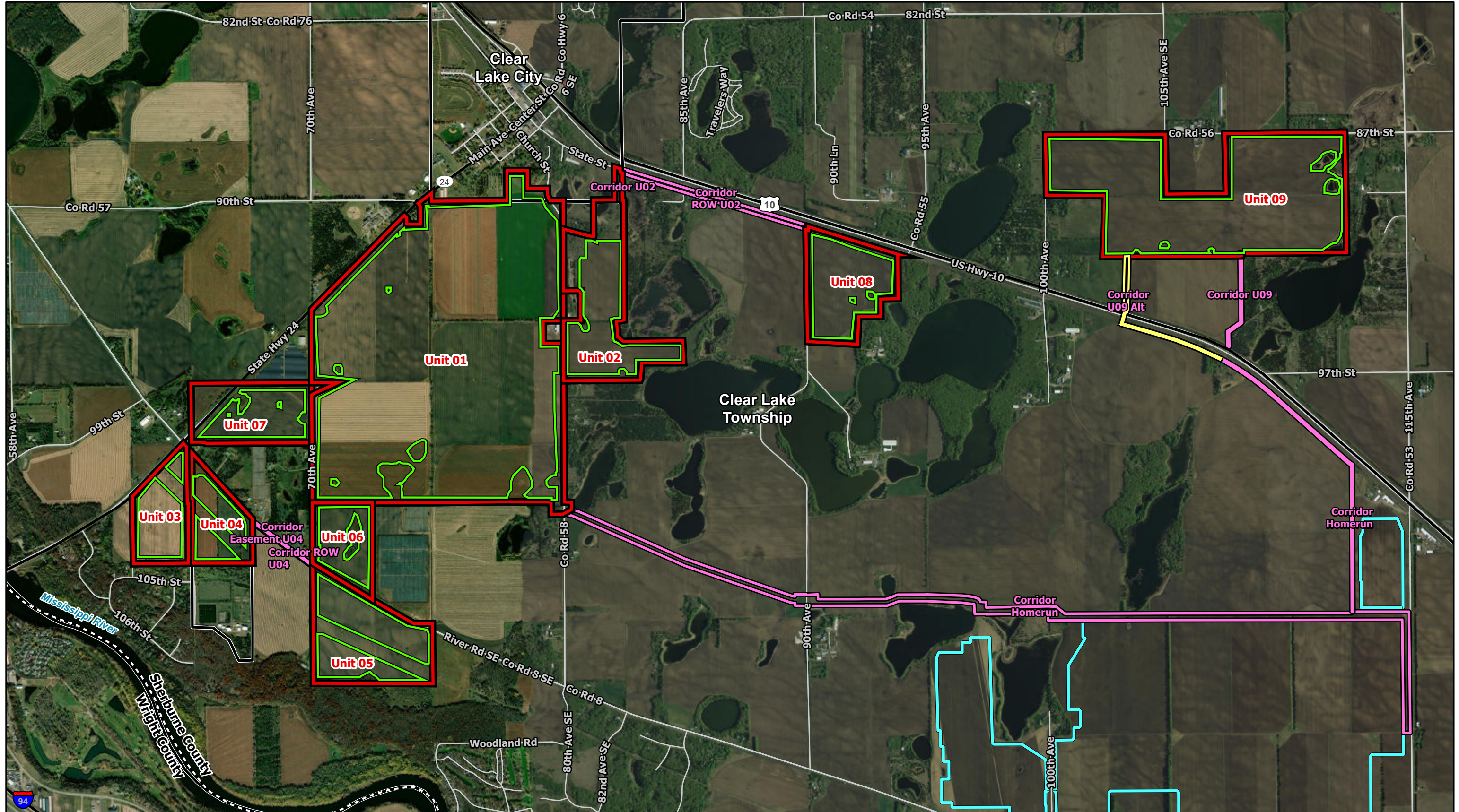


Sherco 3 Solar Project

Sherburne County, Minnesota

Exhibit 1: Overall Project Location

July, 2023

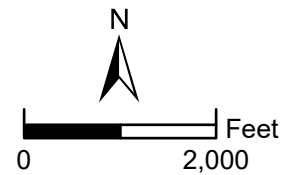


Data Source(s): Westwood (2023); ESRI WMS
 USGS Topographic & World Streets Basemaps
 (Accessed 2023); U.S. Census Bureau (2021).

Legend

- Lease Area
- Collection Line Corridor
- Collection Corridor - Alternate
- Buildable Area
- Sherco Solar West Fence
- City/Civil Township Boundary
- County Boundary
- Major Road
- Road

Westwood
 Toll Free (888) 937-5150 westwoodps.com
 Westwood Professional Services, Inc.



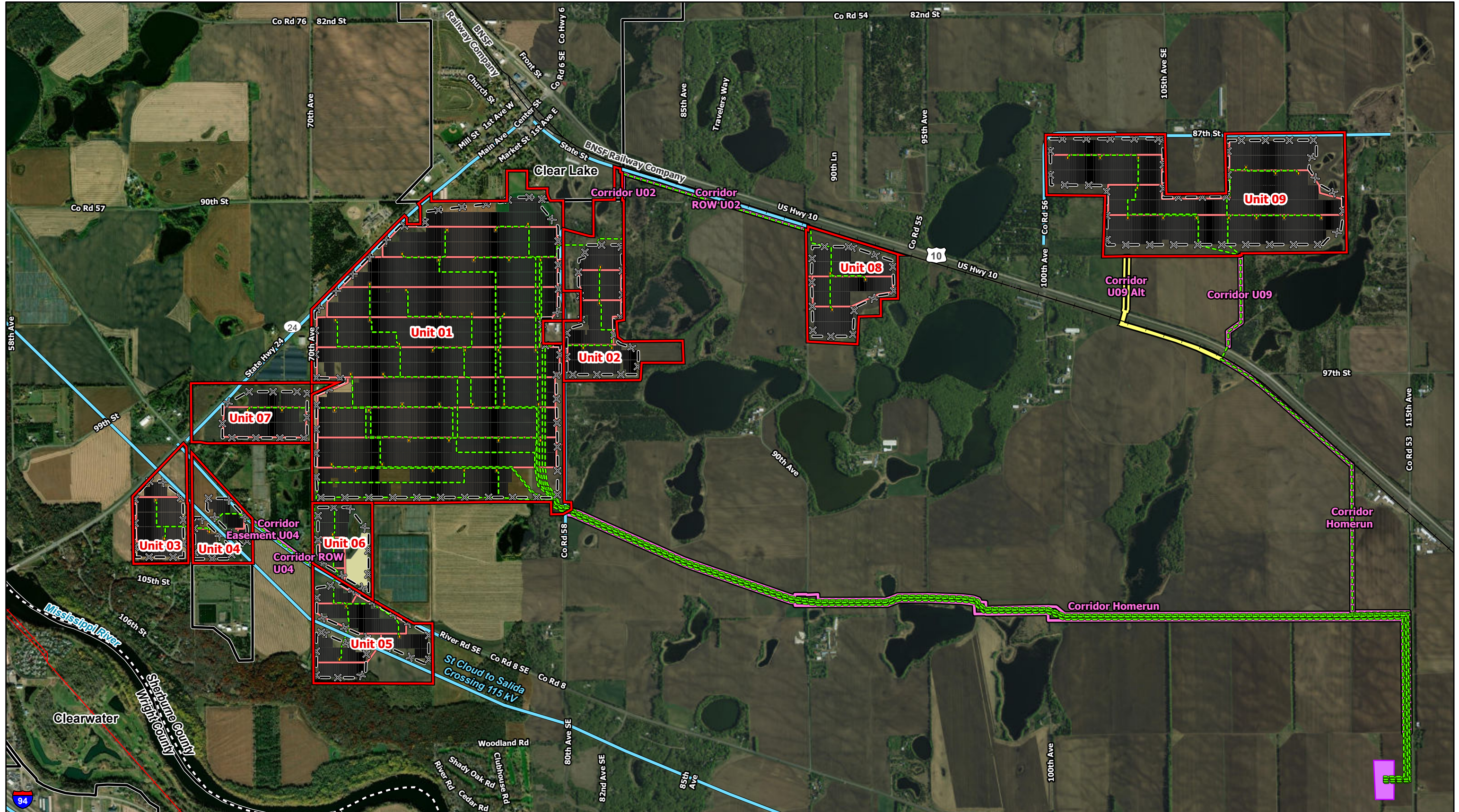
Sherco 3 Solar Project

Sherburne County, Minnesota

**Exhibit 2:
 Buildable Area**

August, 2023

Map Document: N:\0036476_00_GIS_ArcPro\0036476_040_SPA\Figures\0036476_040_SPA\Figures_230725.aprx 8/2/2023 4:28 PM EMBolsen

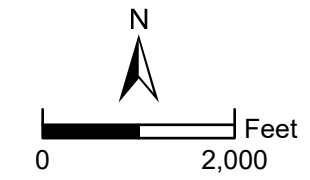


Data Source(s): Westwood (2023); ESRI WMS Imagery Basemap (Accessed 2023); U.S. Census Bureau (2021); Ventyx Velocity Suite (2022); MNDOT (2021); USFWS NWI (2022); USGS NHD (2022). Existing pipeline routes are approximate.

Westwood
Toll Free (888) 937-5150 westwoodps.com
Westwood Professional Services, Inc.

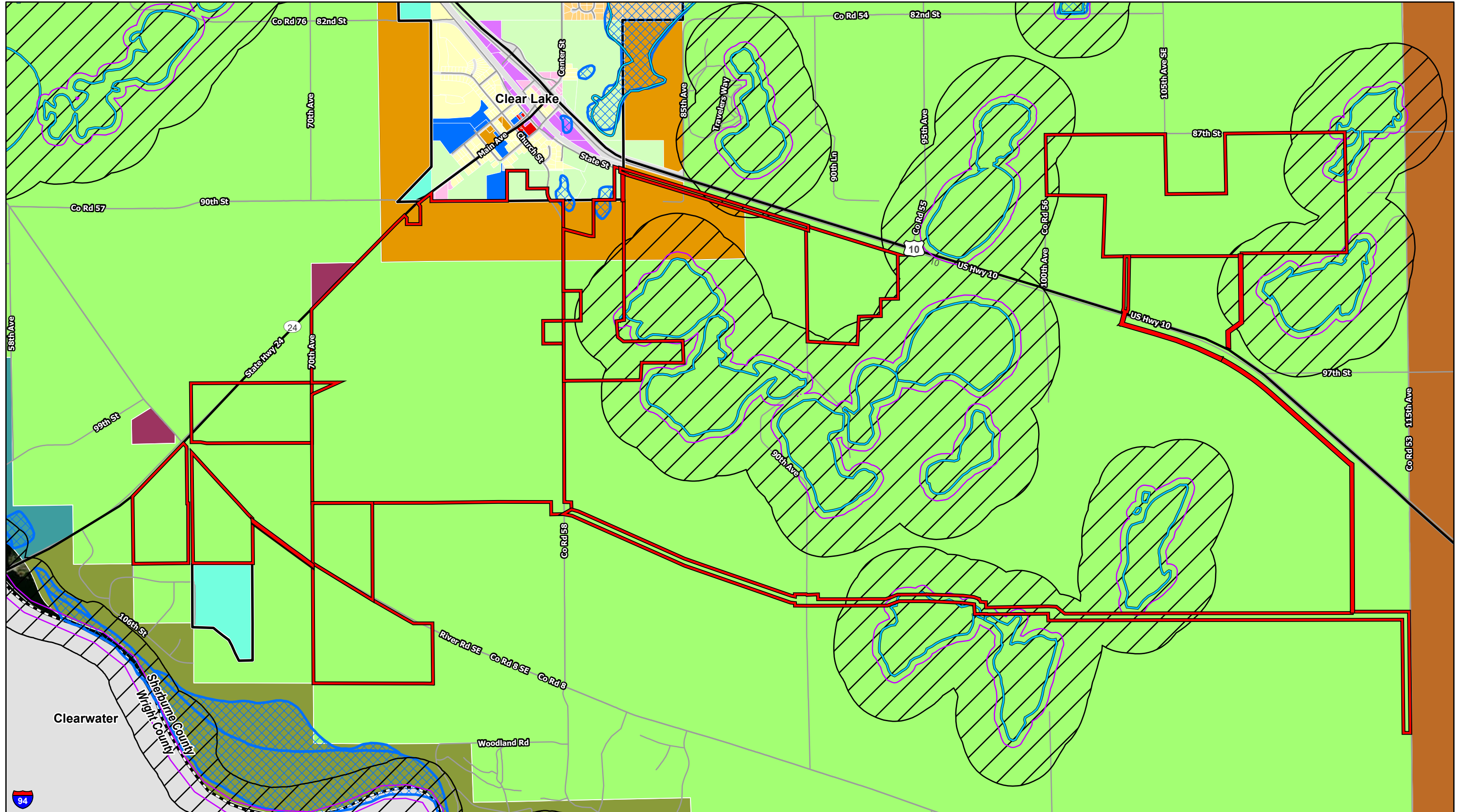
Legend

- | | | | | |
|-------------------|---------------------------------|------------------------------|--------------------|----------------------------|
| Lease Area | Collection Line | Inverter | Municipal Boundary | Existing Transmission Line |
| Proposed Trackers | Collection Line Corridor | Sherco Solar West Substation | Abandoned Rail | County Boundary |
| Array Fence | Collection Corridor - Alternate | Laydown Yard | Railroad | |
| Access Road | | | | |



Sherco 3 Solar Project
Sherburne County, Minnesota
Exhibit 3: Preliminary Project Layout
July, 2023

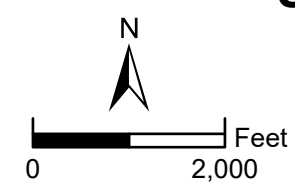
Map Document: N:\0036476_00_GIS_AcPrj\0036476_040_SPA\Figures\0036476_040_SPA\Figures_230725.aprx 7/26/2023 10:01 AM EMBolsen



Data Source(s): Westwood (2023); Sherburne County GIS (2023); U.S. Census Bureau (2021); Clear Lake MN Government Office (2019).

Legend

- | | | | | | | |
|-----------------------|---|--------------------------------|---------------------|---|--|---|
| Project Area | PWI Basin | Sherburne County Zoning | Scenic River | Agricultural District | Light Industrial District | Residential-Medium Density Multiple Family District |
| Municipal Boundary | PWI Waters in Shoreland 150ft Structure Setback | Agricultural | Urban Expansion | Central Business District | Institutional District | Residential-High Density District |
| County Boundary | Major Road | City Limits | ZONED BY BECKER TWP | Highway Commercial District | Residential-Urban Single Family District | No Data |
| Regulatory Floodplain | Road | Industrial | No Data | Residential-Suburban Single Family District | | |
| Shoreland Area | | Recreational | | | | |



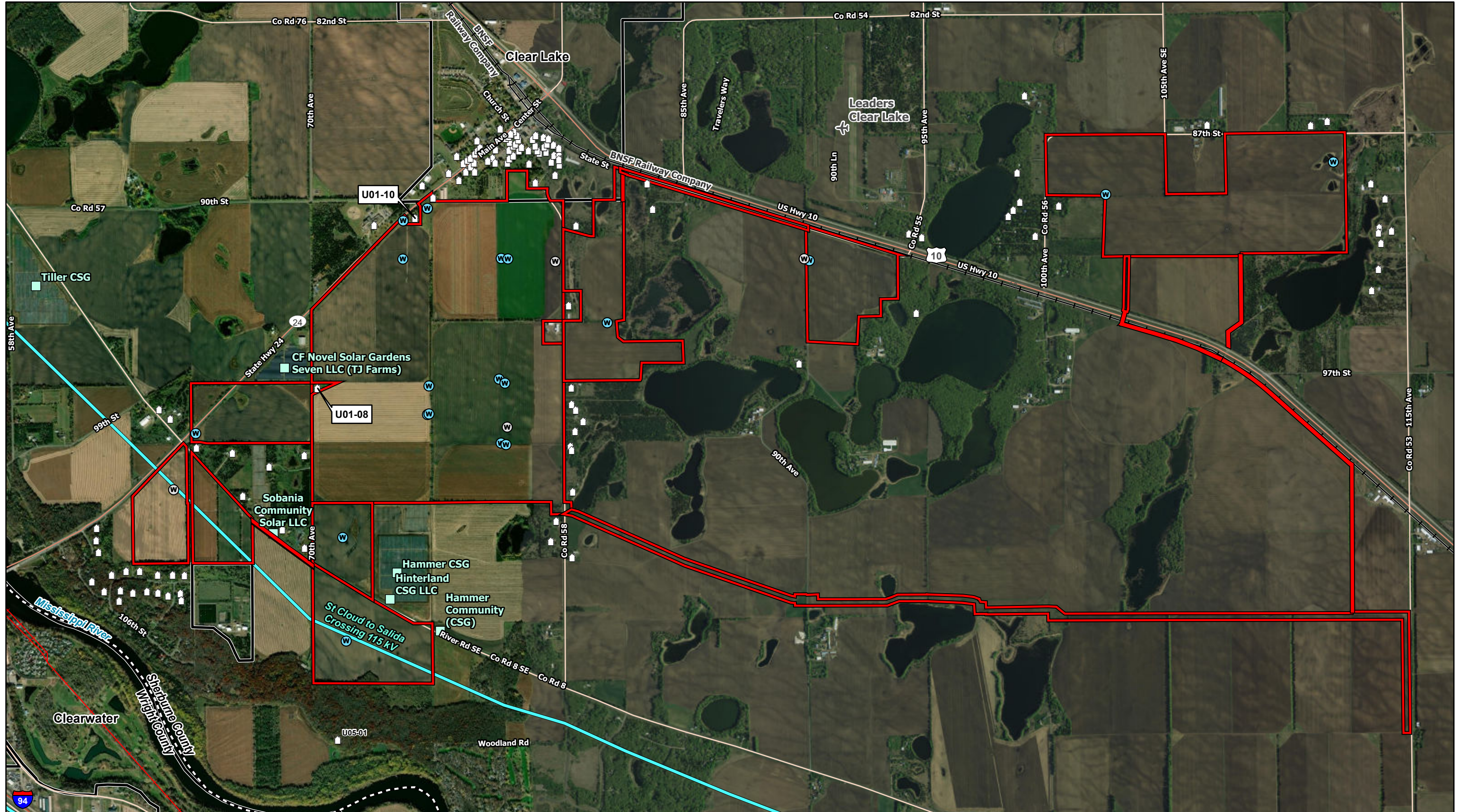
Sherco 3 Solar Project

Sherburne County, Minnesota

**Exhibit 4:
Existing Zoning**

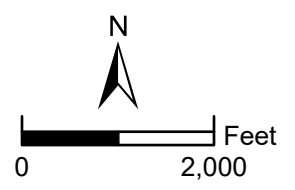
August, 2023

Map Document: N:\0036476_001_GIS_ArcPro\0036476_040_SPA\Figures\0036476_040_SPA\Figures_230725.aprx 8/22/2023 4:45 PM EMBolsen



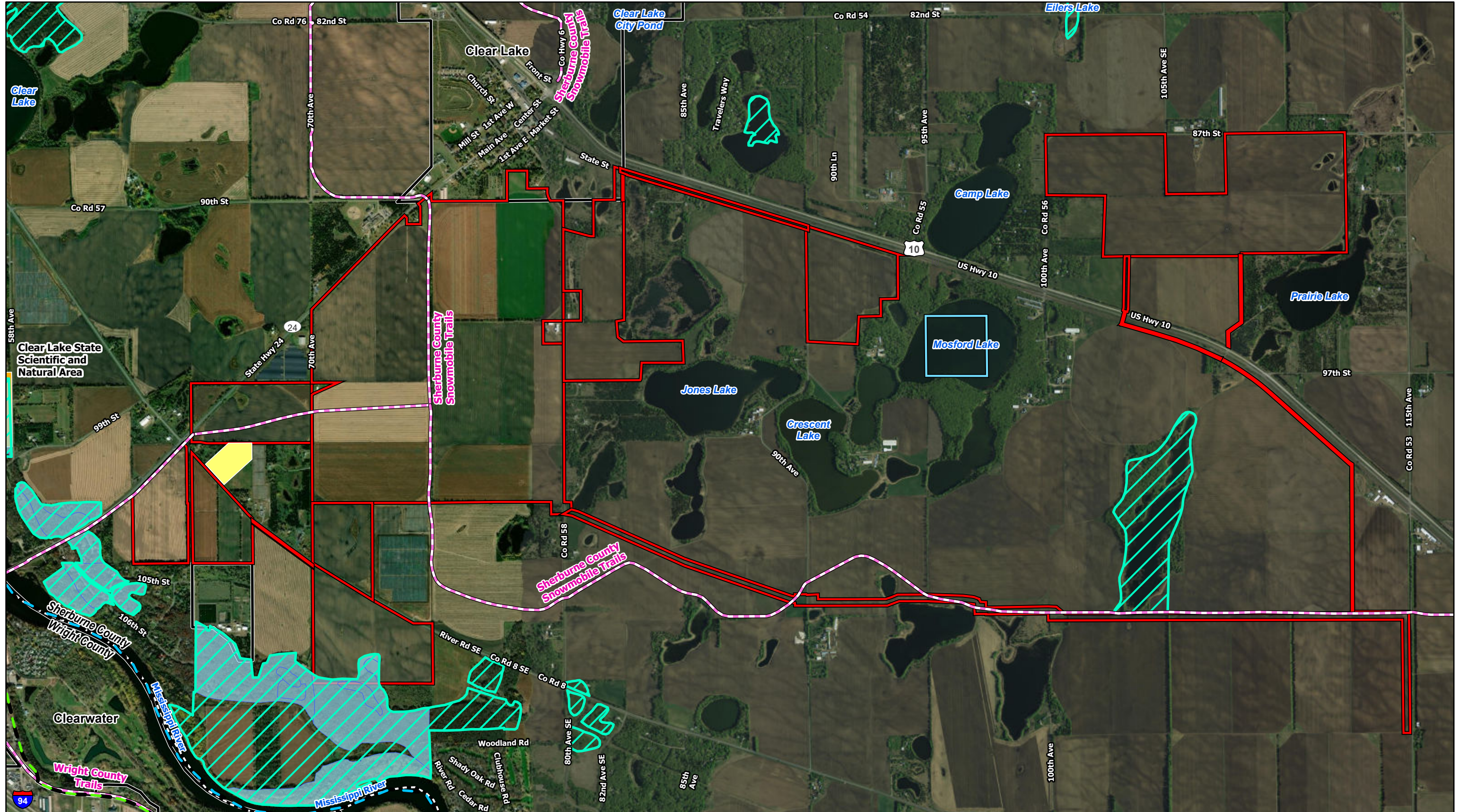
Legend

- | | | |
|--------------------|----------------------------|------------------------------|
| Project Area | Abandoned Rail | Residence |
| Municipal Boundary | Railroad | Water Well in Project |
| County Boundary | Existing Substation | Verified |
| Airport | Existing Transmission Line | Not Verified |



Sherco 3 Solar Project
 Sherburne County, Minnesota
Exhibit 5: Existing Infrastructure & AADT
 July, 2023

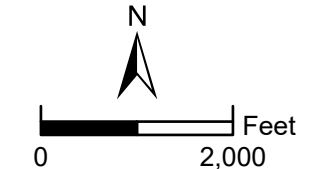
Map Document: N:\0036476_00_GIS_AcPrj\0036476_040_SPA\Figures\0036476_040_SPA\Figures_230725.aprx 7/27/2023 6:28 AM EMBolsen



Data Source(s): Westwood (2023); Sherburne County GIS (2023); U.S. Census Bureau (2021); PADUS (2022); MNDNR (2023); MN Geospatial Commons (2023).

Legend

- Project Area
- Municipal Boundary
- County Boundary
- State Park Trail/Water Trail
- DNR Native Plant Community
- MCBS Site of Biodiversity Significance
- Bike Route
- Snowmobile Trail
- Conservation Easement
- State Conservation Area
- State Regional Management Area

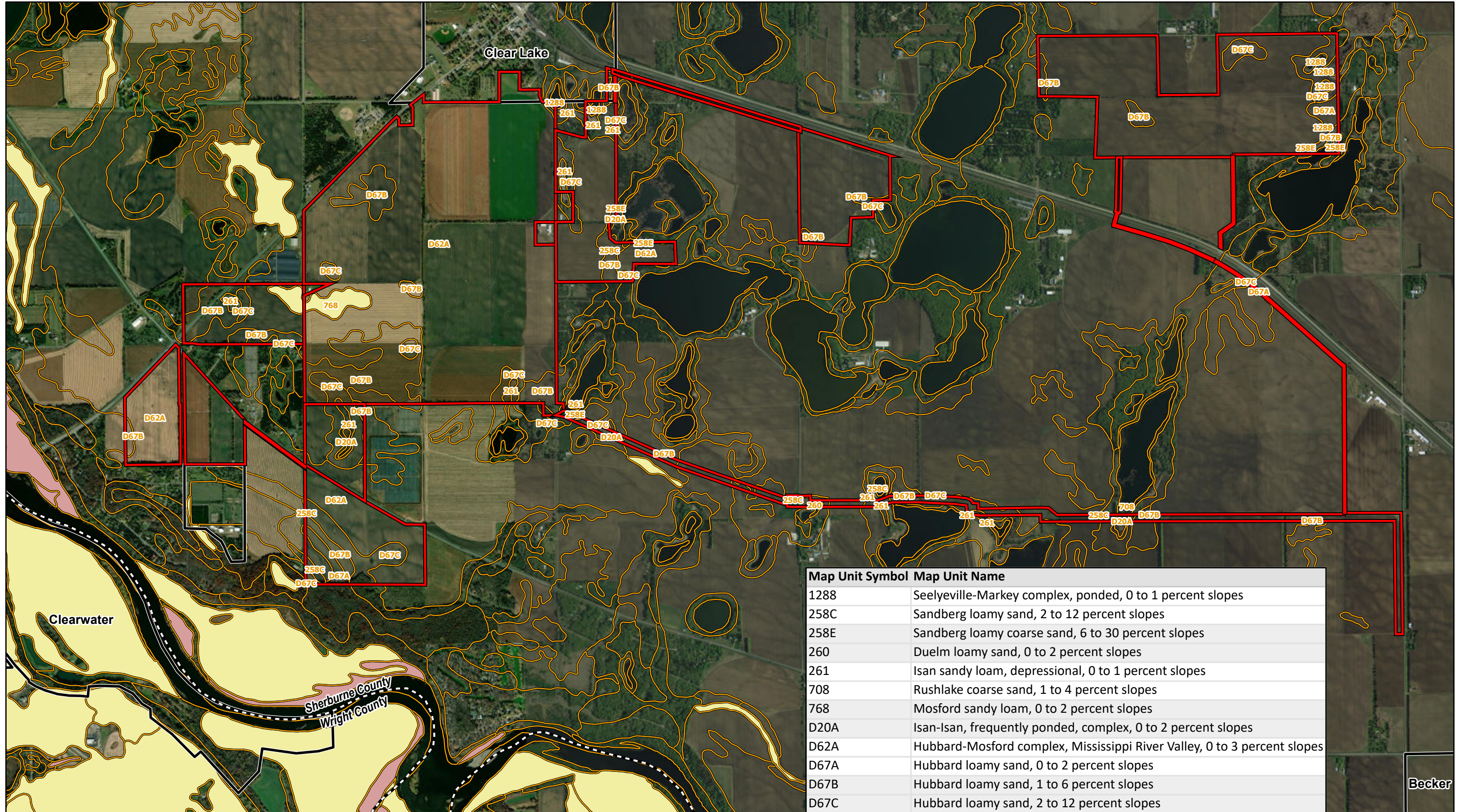


Sherco 3 Solar Project

Sherburne County, Minnesota

Exhibit 6: Recreational, Biological & Public Lands

July, 2023



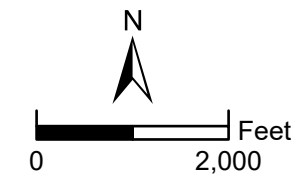
Map Unit Symbol	Map Unit Name
1288	Seelyeville-Markey complex, ponded, 0 to 1 percent slopes
258C	Sandberg loamy sand, 2 to 12 percent slopes
258E	Sandberg loamy coarse sand, 6 to 30 percent slopes
260	Duelm loamy sand, 0 to 2 percent slopes
261	Isan sandy loam, depressional, 0 to 1 percent slopes
708	Rushlake coarse sand, 1 to 4 percent slopes
768	Mosford sandy loam, 0 to 2 percent slopes
D20A	Isan-Isan, frequently ponded, complex, 0 to 2 percent slopes
D62A	Hubbard-Mosford complex, Mississippi River Valley, 0 to 3 percent slopes
D67A	Hubbard loamy sand, 0 to 2 percent slopes
D67B	Hubbard loamy sand, 1 to 6 percent slopes
D67C	Hubbard loamy sand, 2 to 12 percent slopes

Data Source(s): Westwood (2023); NLCD (2019); U.S. Census Bureau (2021).

Legend

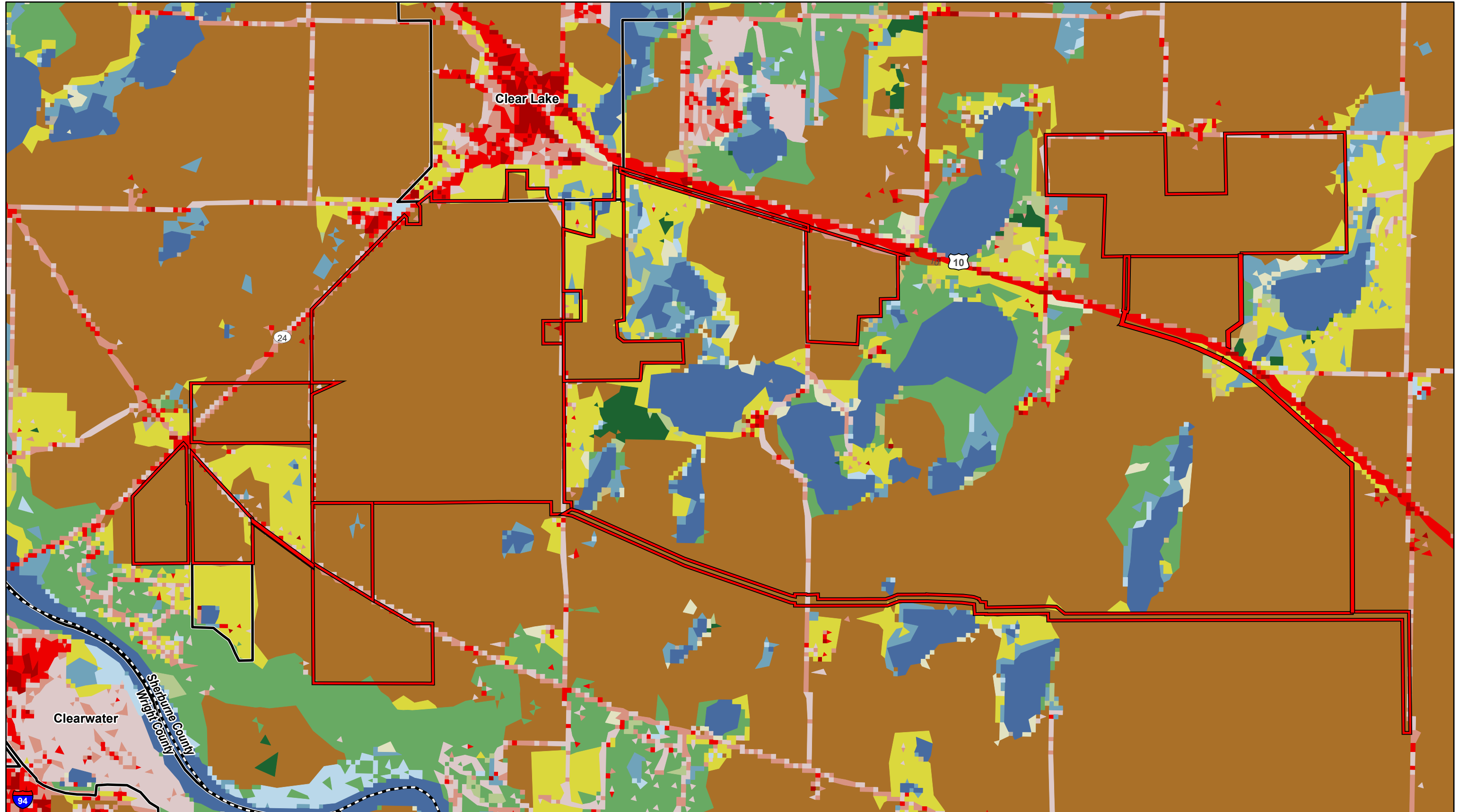
- Project Area
- Soil Unit Boundary
- Municipal Boundary
- County Boundary
- Farmland of statewide importance
- All areas are prime farmland

Westwood
 Toll Free (888) 937-5150 westwoodps.com
 Westwood Professional Services, Inc.



Sherco 3 Solar Project
 Sherburne County, Minnesota
Exhibit 8:
Soil Resources
 July, 2023

Map Document: N:\0036476_00_GIS_ArcPro\0036476_040_SPA\Figures\0036476_040_SPA\Figures_230725.aprx 7/27/2023 6:30 AM EMBolsen



Data Source(s): Westwood (2023); NLCD (2019); U.S. Census Bureau (2021).

Legend

- Project Area
- Municipal Boundary
- County Boundary

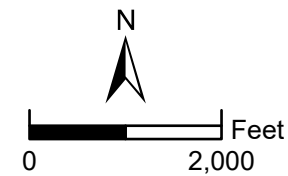
- NLCD Land Cover**
- Barren Land
 - Cultivated Crops
 - Deciduous Forest

- Developed, High Intensity
- Developed, Low Intensity

- Developed, Medium Intensity
- Developed, Open Space

- Emergent Wetlands
- Evergreen Forest
- Hay/Pasture

- Herbaceous
- Mixed Forest
- Open Water
- Shrub/Scrub
- Woody Wetlands

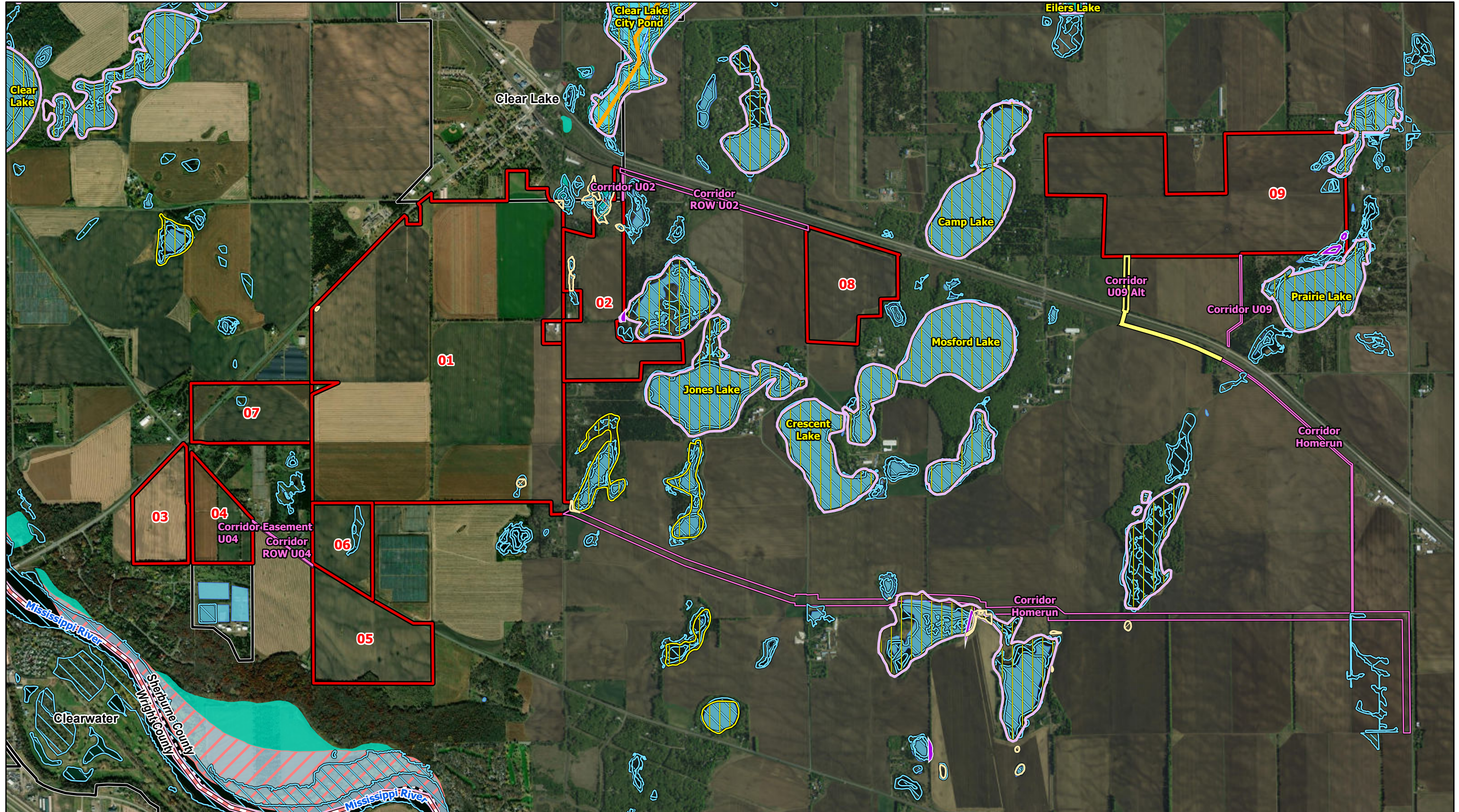


Sherco 3 Solar Project

Sherburne County, Minnesota

**Exhibit 7: Land Use/
Land Cover**

July, 2023

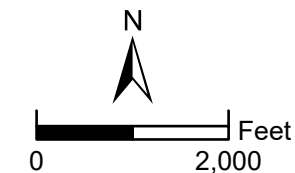


Data Source(s): Westwood (2023); ESRI WMS Imagery Basemap (Accessed 2023); U.S. Census Bureau (2021); USGS NHD (2022); USFWS NWI (2022); MN PWI (2023); FEMA (2022).

Legend

- | | | | | | |
|---------------------------------|--------------------|--------------------|-------------------------------|---------------------|---------------------|
| Lease Area | Municipal Boundary | Delineated Wetland | PWI Watercourse 16.5ft Buffer | NHD Flowline | Regulatory Floodway |
| Collection Line Corridor | County Boundary | Impaired Stream | PWI Watercourse 50ft Buffer | NHD Waterbody | |
| Collection Corridor - Alternate | Delineated Pond | PWI Basin | PWI Basin 50ft Buffer | NWI Wetland | |
| | | PWI Watercourse | | 100 Year Floodplain | |

Westwood
Toll Free (888) 937-5150 westwoodps.com
Westwood Professional Services, Inc.



Sherco 3 Solar Project

Sherburne County, Minnesota

**Exhibit 9:
Water Resources**

July, 2023

Map Document: N:\0036476_00_GIS_ArcPro\0036476_040_SPA\Figures\0036476_040_SPA\Figures_230725.aprx 7/27/2023 6:51 AM EMBolsen