

Figure 11b
Cultural and Archaeological Resources

Bitter Root Wind Farm
Flying Cow Wind, LLC
Yellow Medicine County, Minnesota

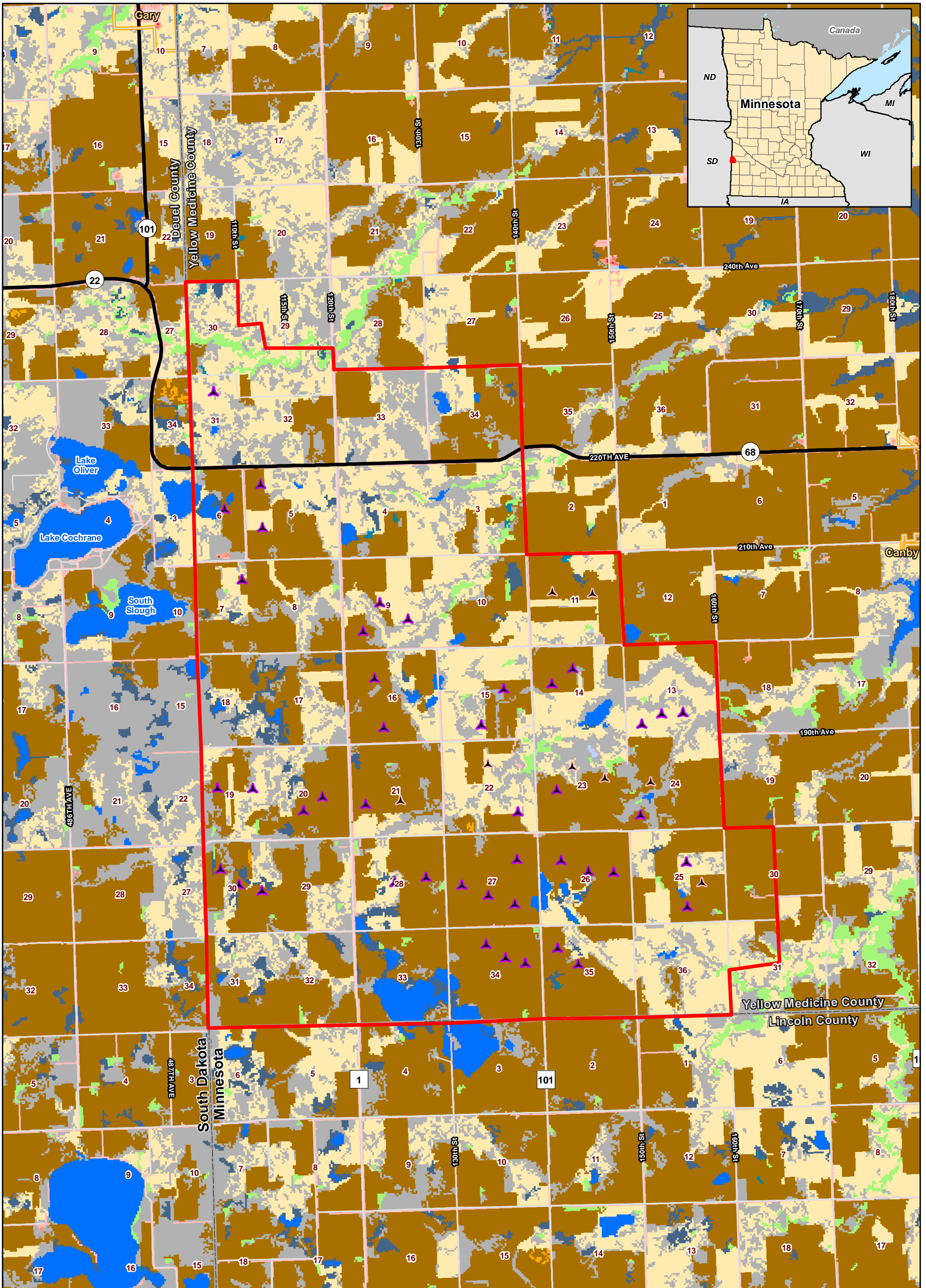
Updated 3/28/2018

- Proposed Turbine
- Proposed Alternate Turbine
- Project Area
- Proposed Met Tower
- Proposed Facilities Boundary (OM Building and Laydown Yard)
- Proposed Collection Line
- Proposed Access Road
- Proposed Alternate Access Road
- Architectural/Historic Resource
- Archaeological Site in Section



0 0.25 0.5 1
 Miles

Data Source: RES Americas, MN DNR, Mn Geo, MN SHPO
 Imagery Source: National Geographic World Map



**Figure 12
Land Cover**

**Bitter Root Wind Farm
Flying Cow Wind, LLC
Yellow Medicine County, Minnesota**

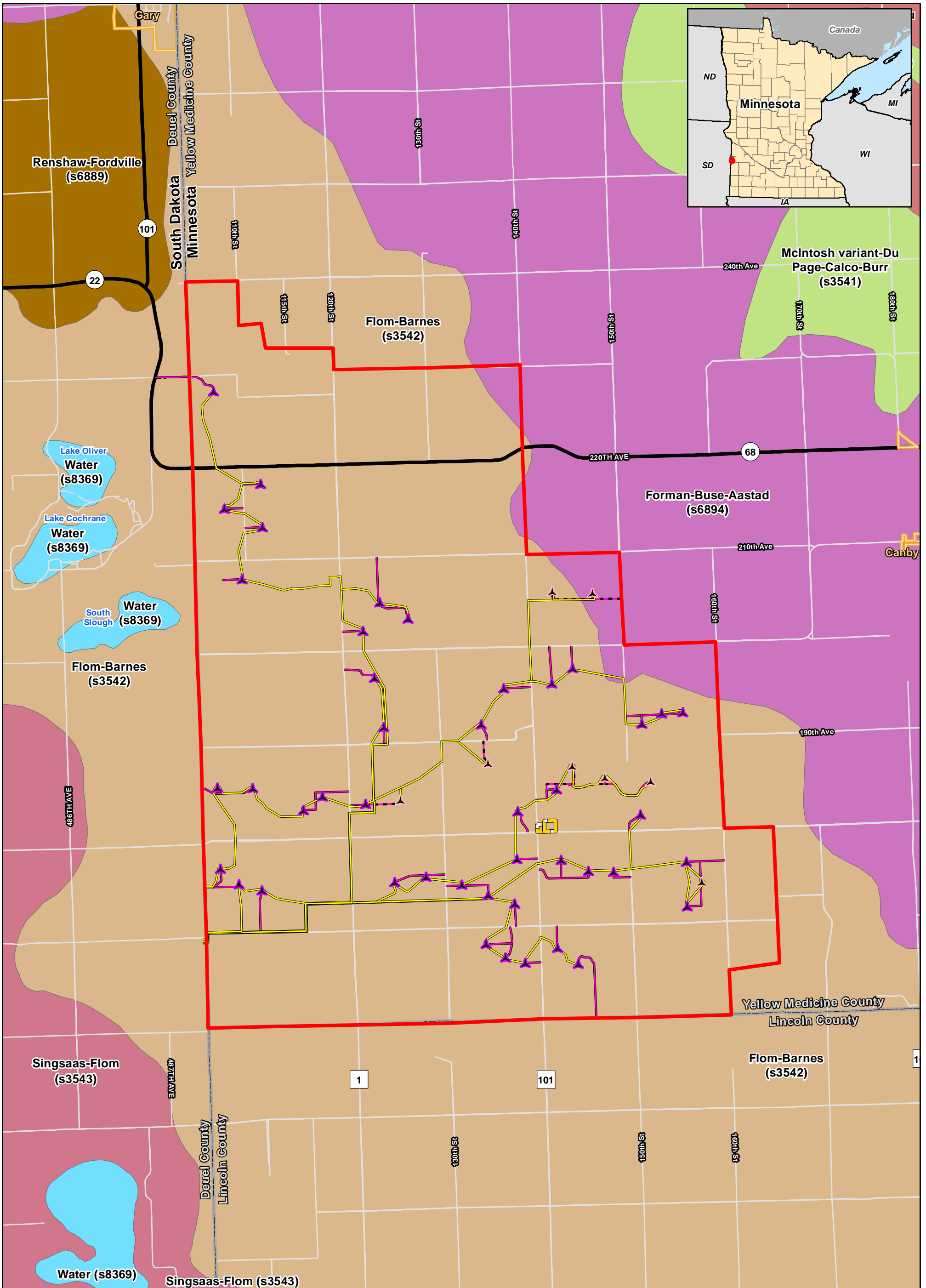
Updated 3/28/2018



0 0.25 0.5 1 Miles

Data Source: RES Americas
Imagery Source: NLCD LULC

- | | |
|------------------------------|------------------------------|
| Proposed Turbine | Developed, Medium Intensity |
| Proposed Alternate Turbine | Developed, Open Space |
| Project Area | Emergent Herbaceous Wetlands |
| Barren Land (Rock/Sand/Clay) | Grassland/Herbaceous |
| Cultivated Crops | Open Water |
| Deciduous Forest | Pasture/Hay |
| Developed, High Intensity | Shrub/Scrub |
| Developed, Low Intensity | Woody Wetlands |



0 0.25 0.5 1 Miles

Data Source: RES Americas, NRCS



**Figure 13
Soils**

**Bitter Root Wind Farm
Flying Cow Wind, LLC
Yellow Medicine County, Minnesota**

Updated 3/28/2018

- Proposed Turbine
- Proposed Alternate Turbine
- Project Area
- Proposed Facilities Boundary (OM Building and Laydown Yard)
- Proposed Collection Line
- Proposed Access Road
- Proposed Alternate Access Road

STATSGO Soil Type

- Flom-Barnes (s3542)
- Forman-Buse-Aastad (s6894)
- Marysland-Egeland-Arvilla (s3536)
- McIntosh variant-Du Page-Calco-Burr (s3541)
- Renshaw-Fordville (s6889)
- Singsaas-Flom (s3543)
- Water (s8369)

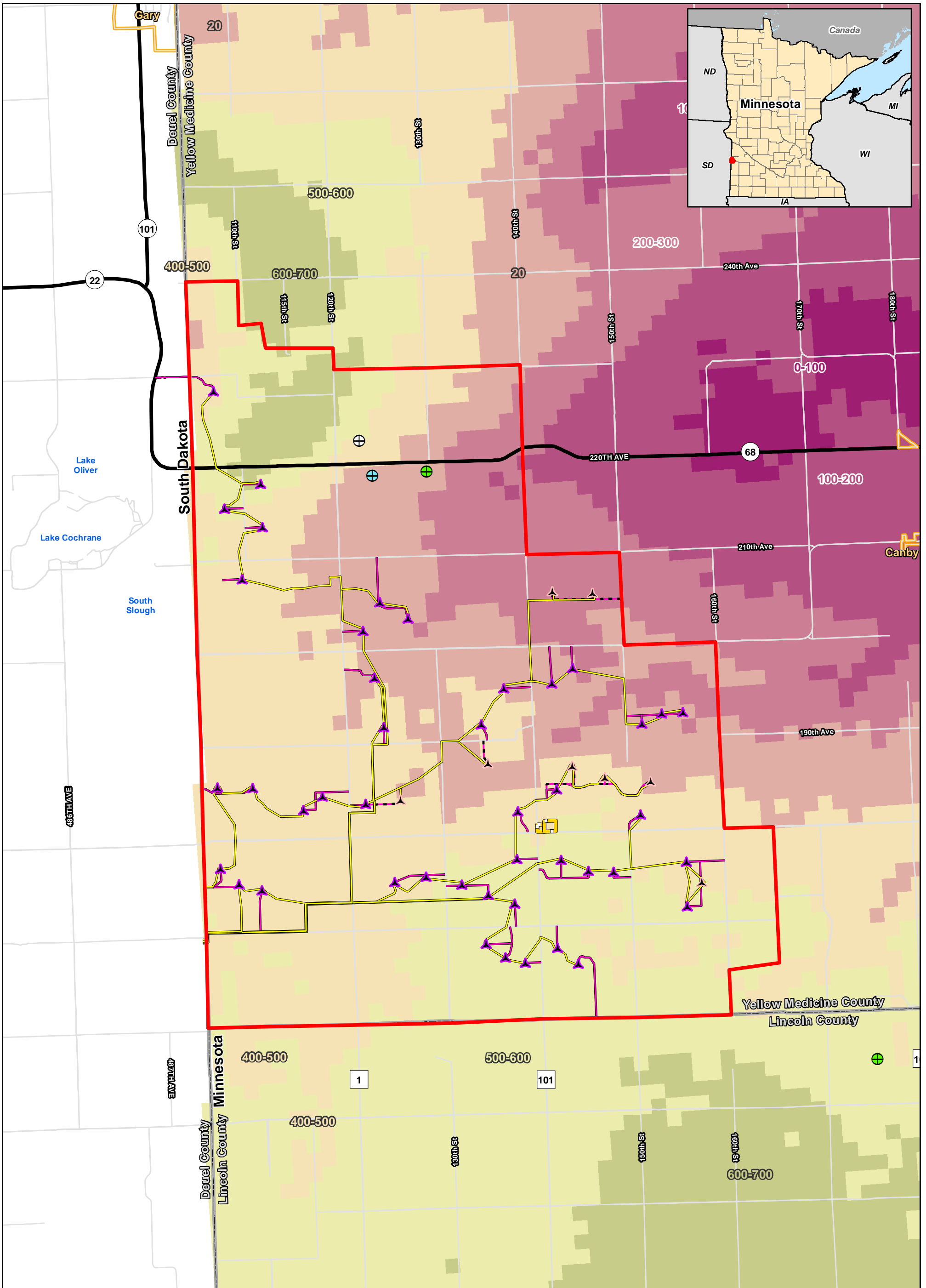


Figure 14
Site Geology and Depth to Bedrock

Bitter Root Wind Farm
Flying Cow Wind, LLC
Yellow Medicine County, Minnesota

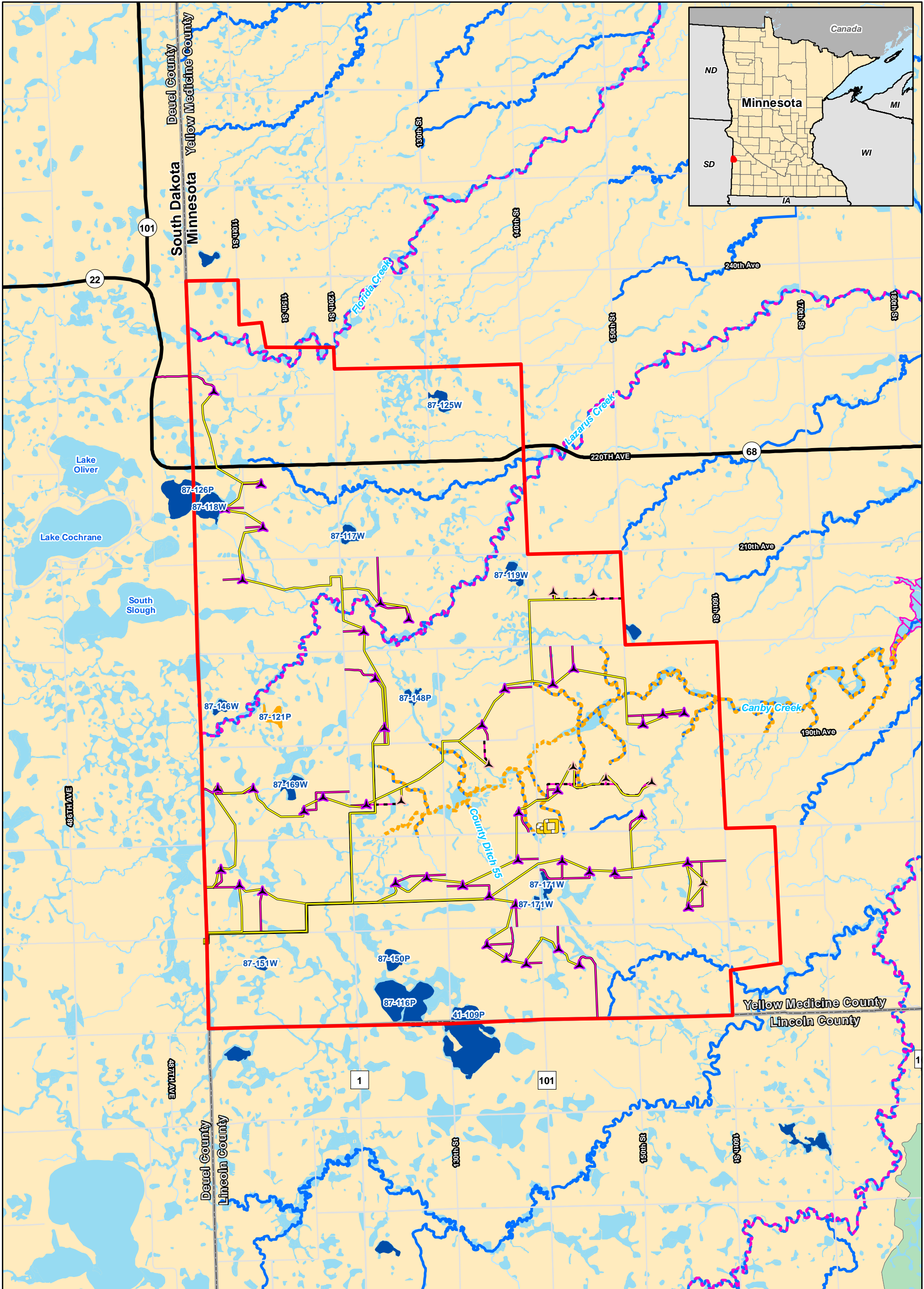
Updated 3/28/2018

- | | | |
|--|--|--|
| <ul style="list-style-type: none"> Proposed Turbine Proposed Alternate Turbine Project Area Proposed Facilities Boundary (OM Building and Laydown Yard) Proposed Collection Line Proposed Access Road Proposed Alternate Access Road | <p>Depth to Bedrock (feet)</p> <ul style="list-style-type: none"> 0 - 100 100 - 200 200 - 300 300 - 400 400 - 500 500 - 600 600 - 700 | <p>Gravel Pits</p> <ul style="list-style-type: none"> Inactive Aggregate Source Aggregate Pit (Mn/DOT) Aggregate Pit (Prospected) |
|--|--|--|



0 0.25 0.5 1 Miles

Data Source: RES Americas, MN DNR, MN DOC, Mn Geo, MN DOT
 Imagery Source: MN Geological Society



0 0.25 0.5 1 Miles

Data Source: RES Americas, MN DNR, MN DOC, Mn Geo, MPCA

**Figure 15
Surface Waters**

**Bitter Root Wind Farm
Flying Cow Wind, LLC
Yellow Medicine County, Minnesota**

Updated 3/28/2018

- Proposed Turbine
- Proposed Alternate Turbine
- Project Area
- Proposed Facilities Boundary (OM Building and Laydown Yard)
- Proposed Collection Line
- Proposed Access Road
- Proposed Alternate Access
- Impaired Wetland
- Trout Stream
- Impaired Lakes
- Impaired Stream
- MN NWI Wetland
- 24K Stream or Ditch
- Public Waters Inventory**
- Public Water Watercourse
- Public Water Basin/Wetland
- HUC 8**
- Minnesota River - Yellow Medicine River Watershed
- Lac Qui Parle River Watershed

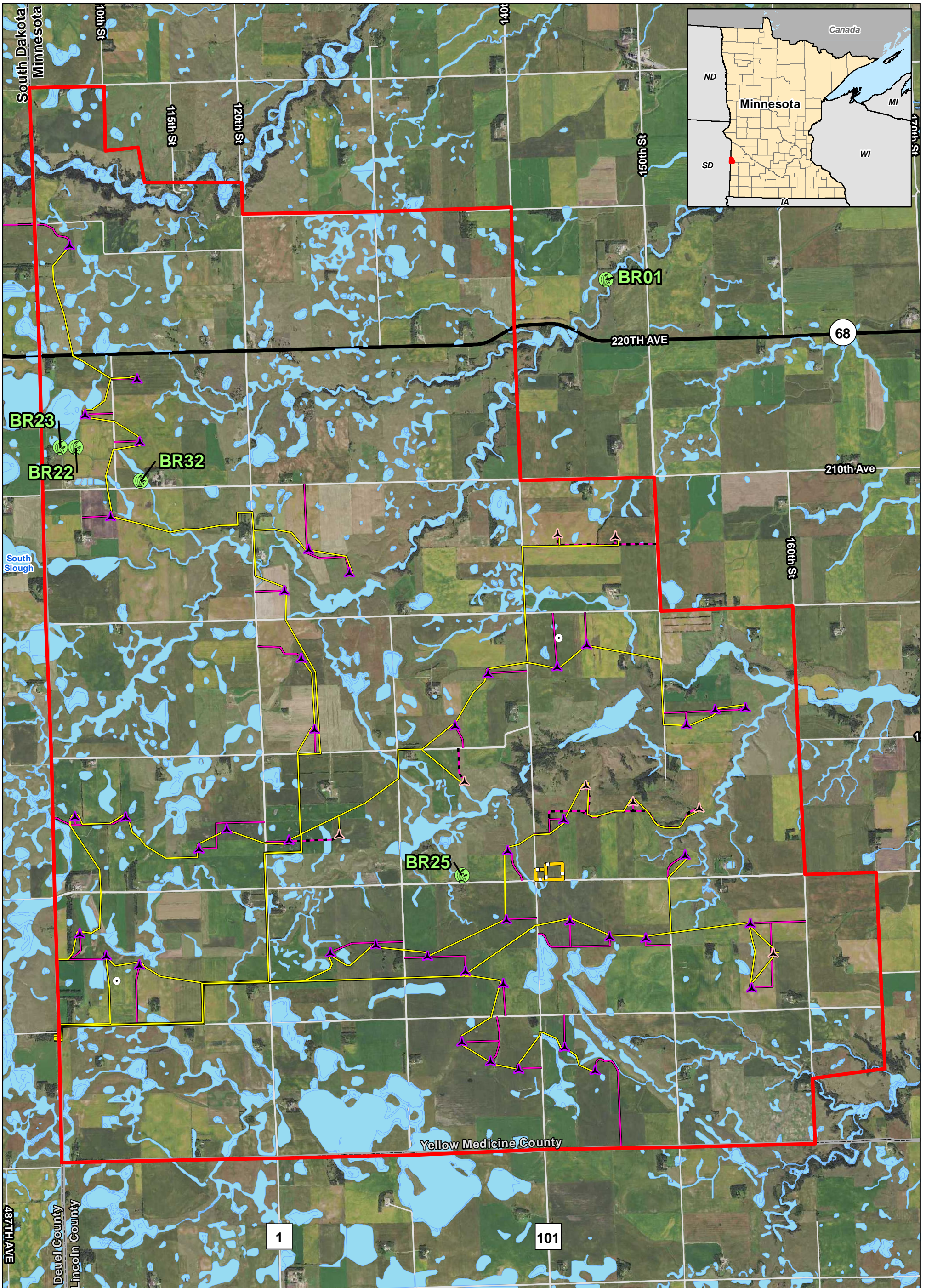
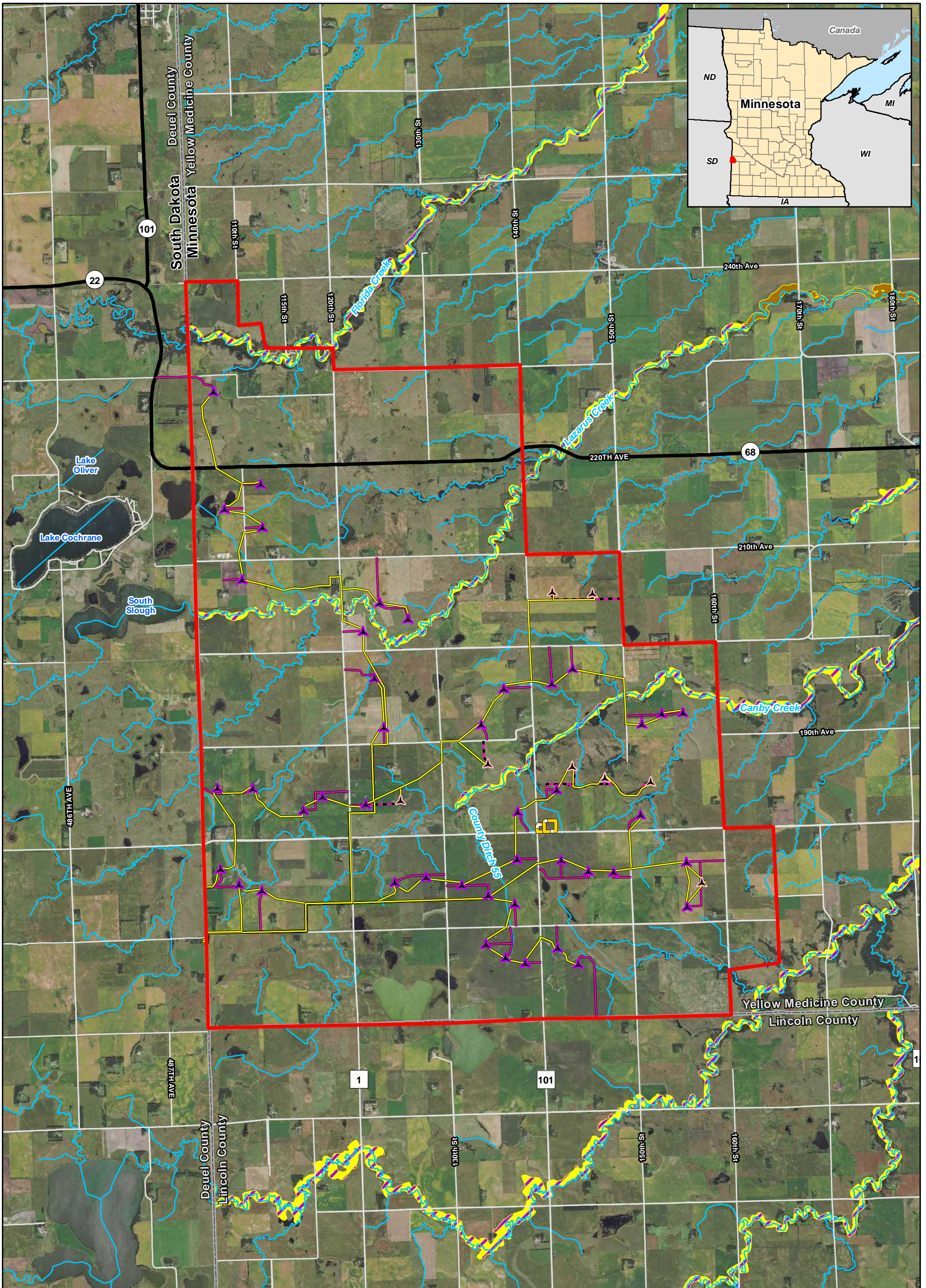


Figure 16
Wetland Inventory
Bitter Root Wind Farm
Flying Cow Wind, LLC
Yellow Medicine County, Minnesota
 Updated 3/28/2018

- Proposed Turbine
- Proposed Alternate Turbine
- Project Area
- Proposed Met Tower
- Proposed Facilities Boundary (OM Building and Laydown Yard)
- Proposed Collection Line
- Proposed Access Road
- Proposed Alternate Access
- NWI (MNDNR Update)
- Field Delineated Calcareous Fen

0 0.25 0.5 1 Miles
 Data Source: RES Americas, MN DNR, USFWS
 Imagery Source: 2015 Color FSA



**Figure 17
FEMA Floodplain**

**Bitter Root Wind Farm
Flying Cow Wind, LLC
Yellow Medicine County, Minnesota**

Updated 3/28/2018



0 0.25 0.5 1 Miles

Data Source: RES Americas, MN DNR
Imagery Source: 2015 Color FSA

- Proposed Turbine
- Proposed Alternate Turbine
- Project Area
- Proposed Facilities Boundary (OM Building and Laydown Yard)
- Proposed Collection Line
- Proposed Access Road
- Proposed Alternate Access
- County Boundary
- 24k Stream or Ditch
- 100 Year Floodplain

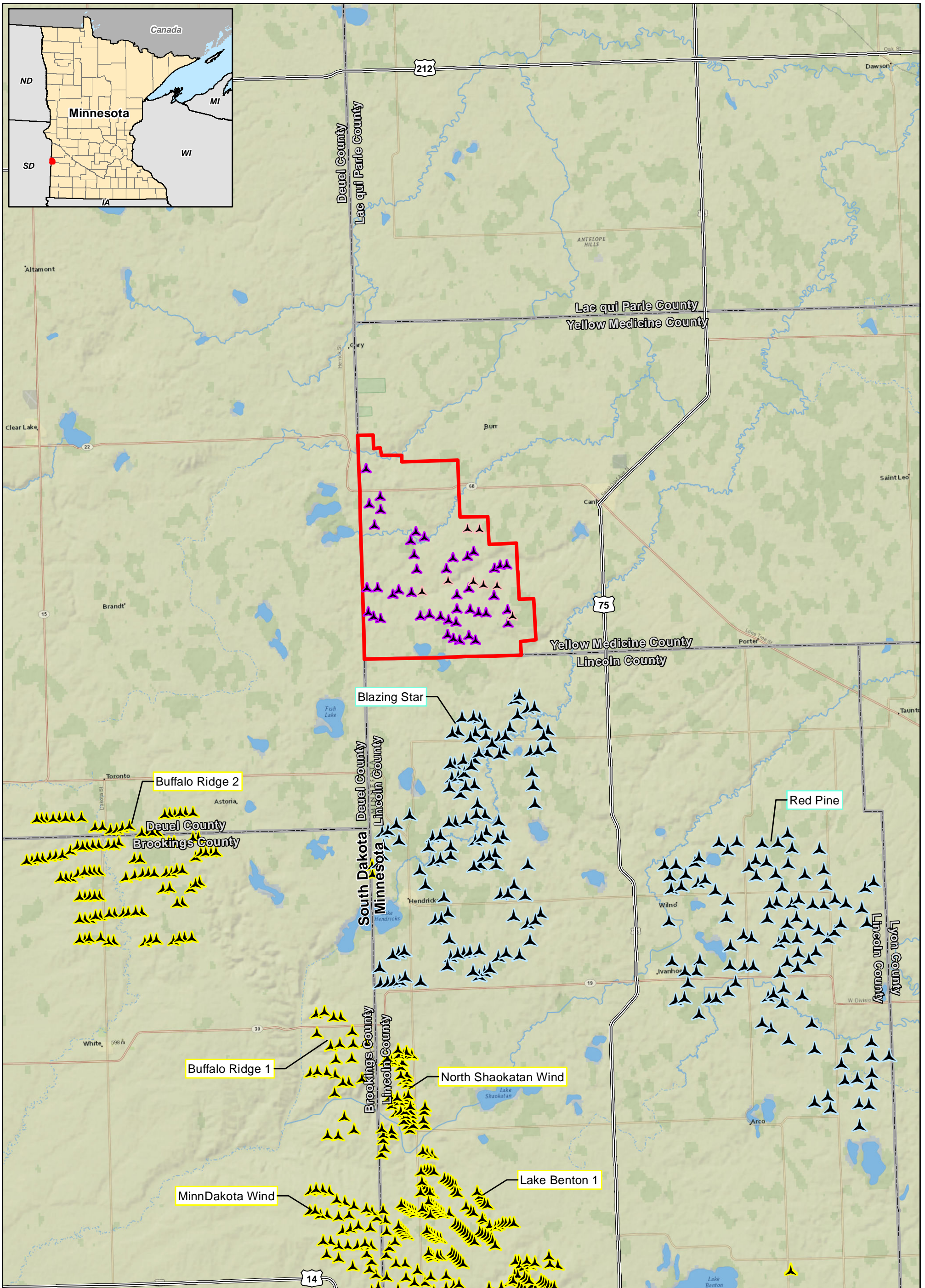








Figure 18
Existing Turbine Locations

Bitter Root Wind Farm
Flying Cow Wind, LLC
Yellow Medicine County, Minnesota

Updated 3/28/2018

-  Proposed Turbine
-  Proposed Alternate Turbine
-  Permitted Turbine
-  Existing Turbine
-  Project Area
-  County Boundary



0 0.75 1.5 3
 Miles

Data Source: RES Americas, USGS
 Imagery Source: Content may not reflect National Geographic's current map