

Corrections to Environmental Report prepared for the Walleye Wind Project in Rock County: Corrected Maps

PUC Docket IP-7026/CN-20-269

Submitted by the Minnesota Department of Commerce Energy, Environmental Review and Analysis

April 22, 2021

Summary

The Minnesota Department of Commerce, Energy Environmental Review and Analysis (EERA) staff identified labeling errors in the maps included in the Environmental Report (ER) prepared for the Walleye Wind Project in Rock County.

In late January 2021, Walleye Wind, LLC changed the turbine numbering in late January to better differentiate the primary and alternate turbine locations. Except for the removal of one turbine, the layout is consistent with the layout shown in the amended certificate of need and site permit applications submitted in November 2020.

Unfortunately, the maps prepared for the ER issued on March 31, 2021 use an earlier numbering system and are inconsistent with the more recent information that Walleye Wind, LLC has provided. As a result of this oversight, turbines are numbered incorrectly in several of the maps included in the ER. This error does not affect the analysis done in the ER.

EERA staff submits corrected copies of the following maps for the purposes of clarifying the record.







ER Text: Figure 1

Appendix C:

- Map 2 – Project Layout
- Map 3 – Constraints
- Map 5 – Wetlands
- Map 6 – Land Cover
- Map 7 – Unique Features
- Map 8 – Shadow Flicker
- Map 0 – Noise

Maps 1 (Project Location) and 4 (Water Resources) do not identify turbines and the maps included in the ER do not require correction.

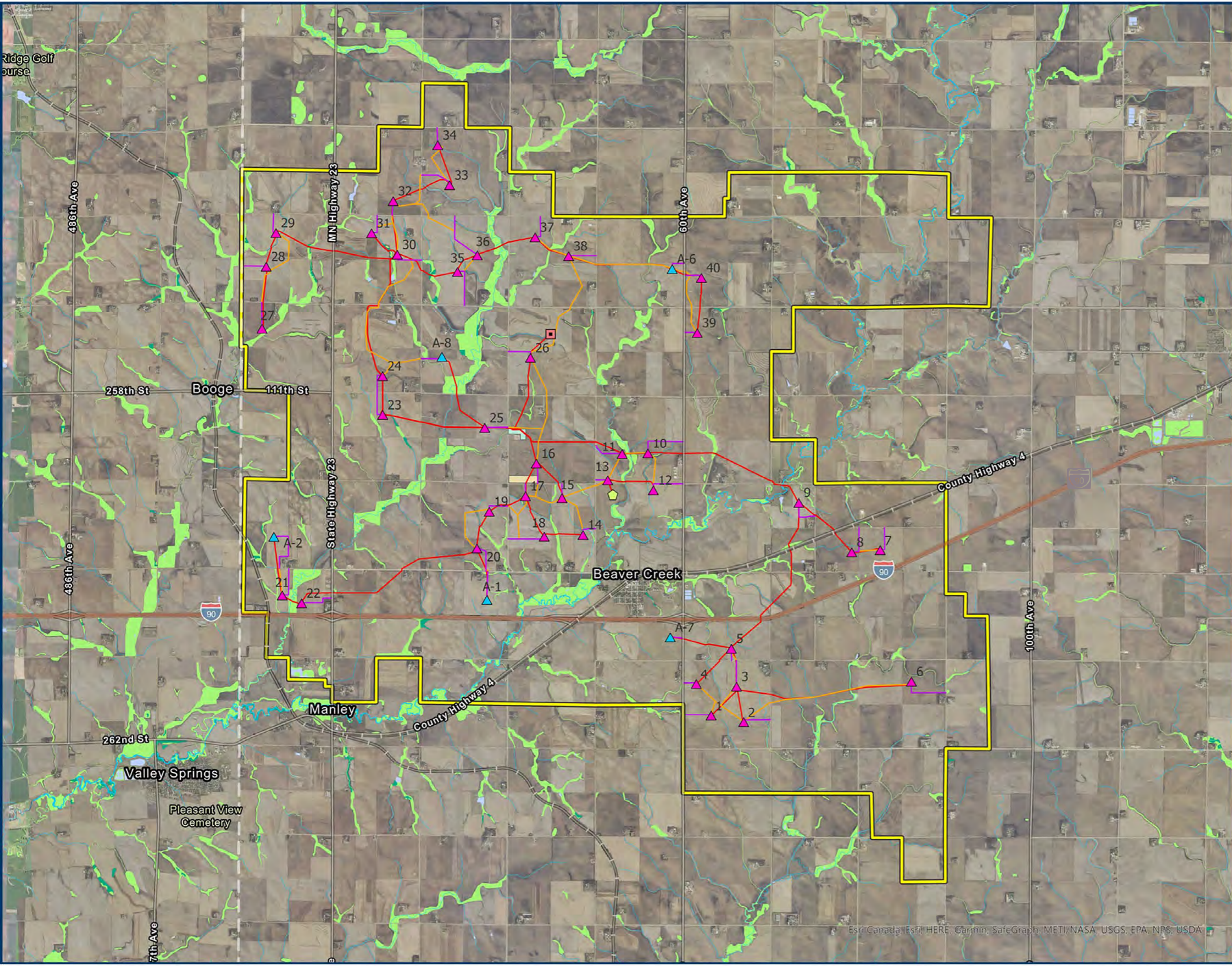
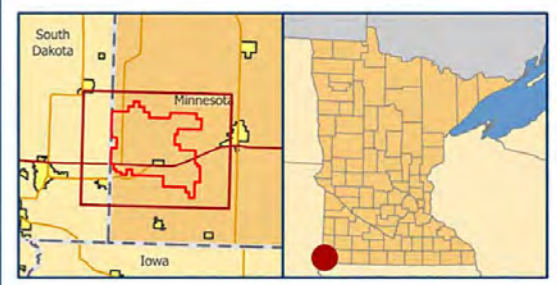
Map 5 Wetlands
Walleye Wind ER

-  Site Boundary
 -  Primary Turbine
 -  Alternate Turbine
 -  MET Tower
 -  ADLS Tower
 -  O&M and Project Substation
 -  Laydown Yard
 -  Access Road
 -  Crane Path
 -  Collection Line
- Non-delineated Wetlands (NWI)**
-  Freshwater Emergent Wetland
 -  Freshwater Forested/Shrub Wetland
 -  Freshwater Pond
 -  Lake
 -  Riverine

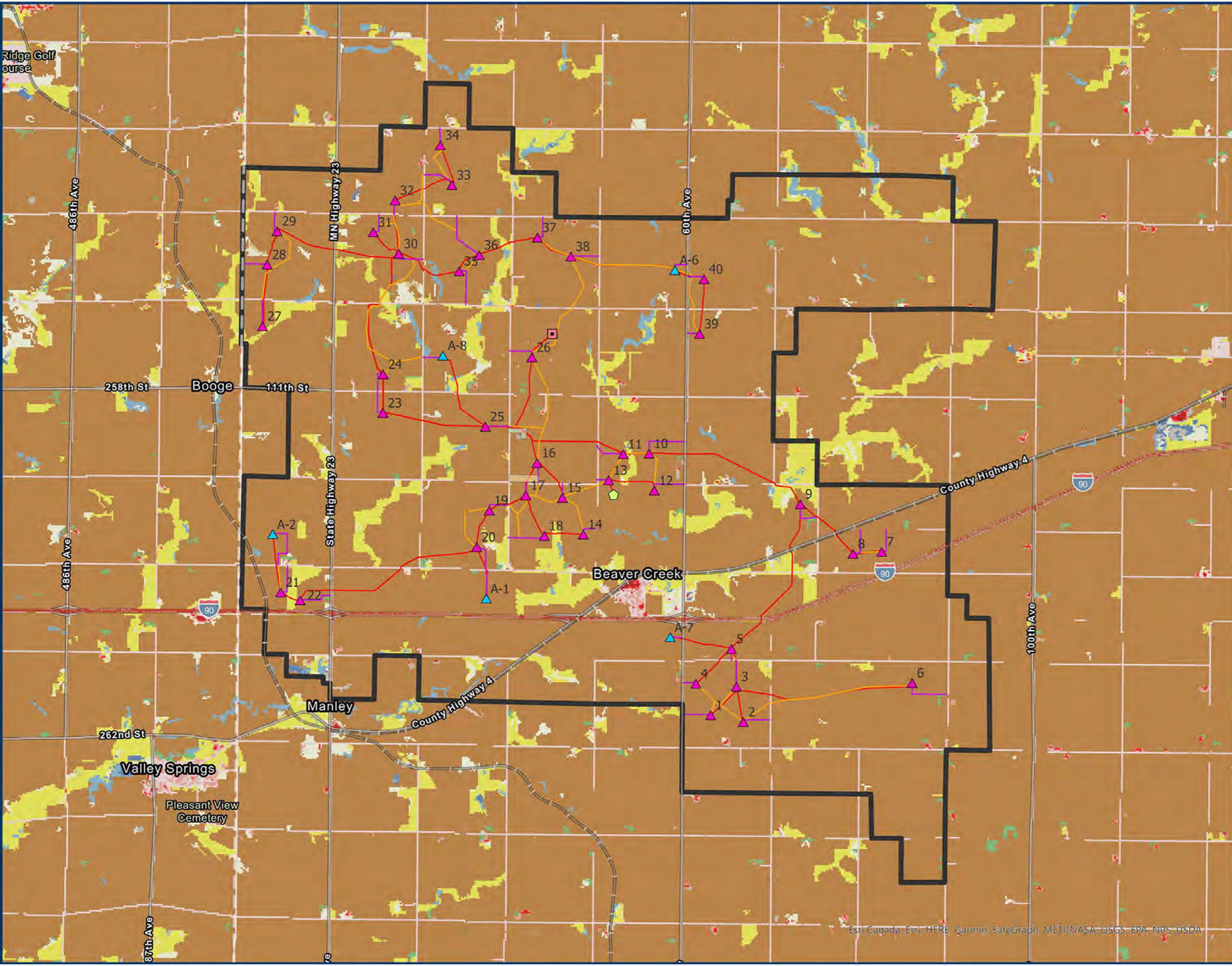
Corrected April 2021



Scale: 1:66,000



Map 6 Landcover (NLCD)
Walleye Wind ER



- Site Boundary
- Primary Turbine
- Alternate Turbine
- MET Tower
- ADLS Tower
- O&M and Project Substation
- Laydown Yard
- Access Road
- Crane Path
- Collection Line

NLCD Land Cover Classification Legend

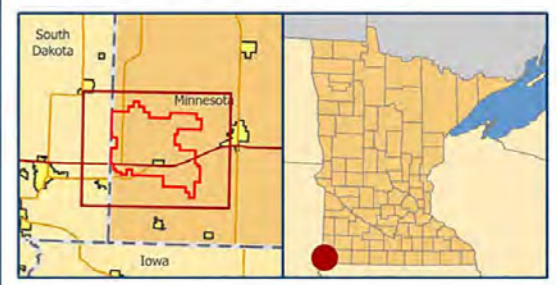
	11 Open Water
	12 Perennial Ice/ Snow
	21 Developed, Open Space
	22 Developed, Low Intensity
	23 Developed, Medium Intensity
	24 Developed, High Intensity
	31 Barren Land (Rock/Sand/Clay)
	41 Deciduous Forest
	42 Evergreen Forest
	43 Mixed Forest
	51 Dwarf Scrub*
	52 Shrub/Scrub
	71 Grassland/Herbaceous
	72 Sedge/Herbaceous*
	73 Lichens*
	74 Moss*
	81 Pasture/Hay
	82 Cultivated Crops
	90 Woody Wetlands
	95 Emergent Herbaceous Wetlands

* Alaska only

Corrected April 2021



Scale: 1:66,000



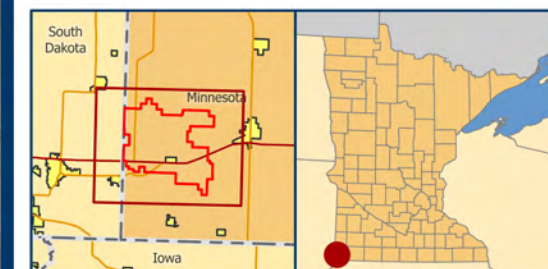
Map 7 Unique Features
Walleye Wind ER

-  Site Boundary
-  Primary Turbine
-  Alternate Turbine
-  NRHP Listed Resource
-  Cemetery
-  Eagle Nest Alternate 2020
-  Native Prairie Community
-  MBS Railroad ROW Prairie
-  Wildlife Management Area
- MCBS Biodiversity Significance
 -  Below
 -  Moderate

Corrected April 2021



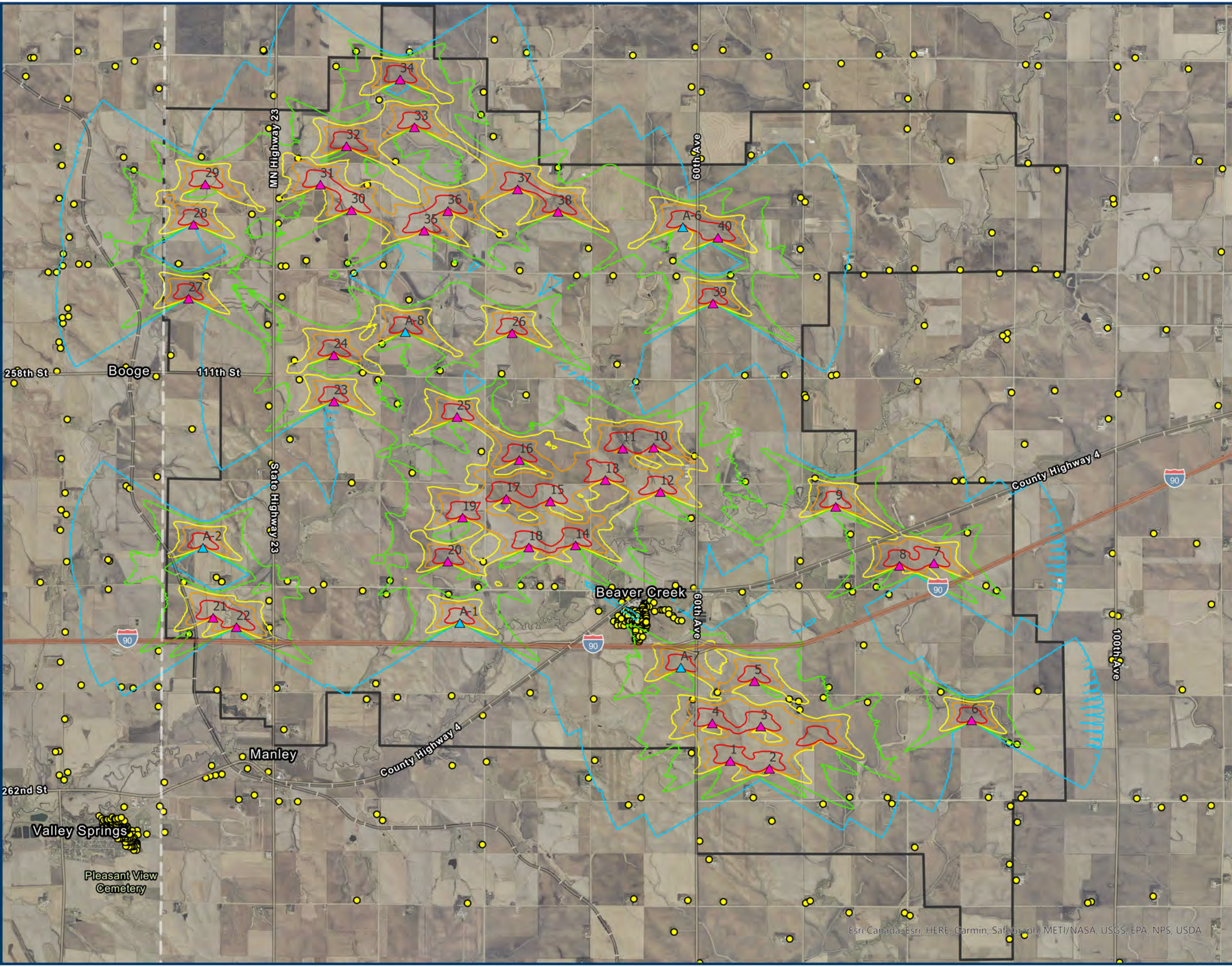
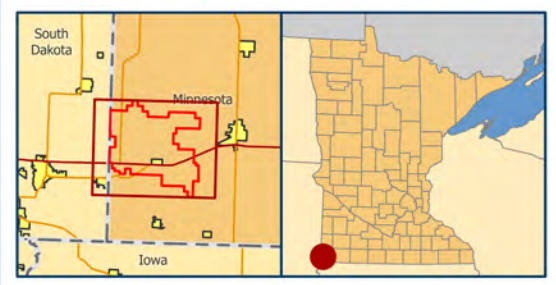
Scale: 1:66,000



Map 8 Shadow Flicker Modeling Walleye Wind ER










- Site Boundary
 - Primary Turbine
 - Alternate Turbine
 - Receptors
- Modeled Shadow Flicker (Hrs/Year)
- 0
 - 10
 - 30
 - 50
 - 100

Corrected April 2021



Esri Canada, Esri, HERE, Garmin, SafeGraph, METI/NASA, USGS, EPA, NPS, USDA

Map 9 Noise Modeling Results
Walleye Wind ER

-  Site Boundary
 -  Primary Turbine
 -  Alternate Turbine
 -  Receptors
- Project + Non-project Sound
dBA
-  35
 -  40
 -  45
 -  50
 -  55

Corrected April 2021



Scale: 1:58,000

