

Figures

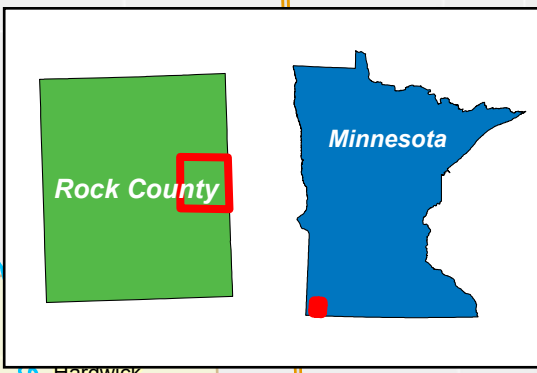
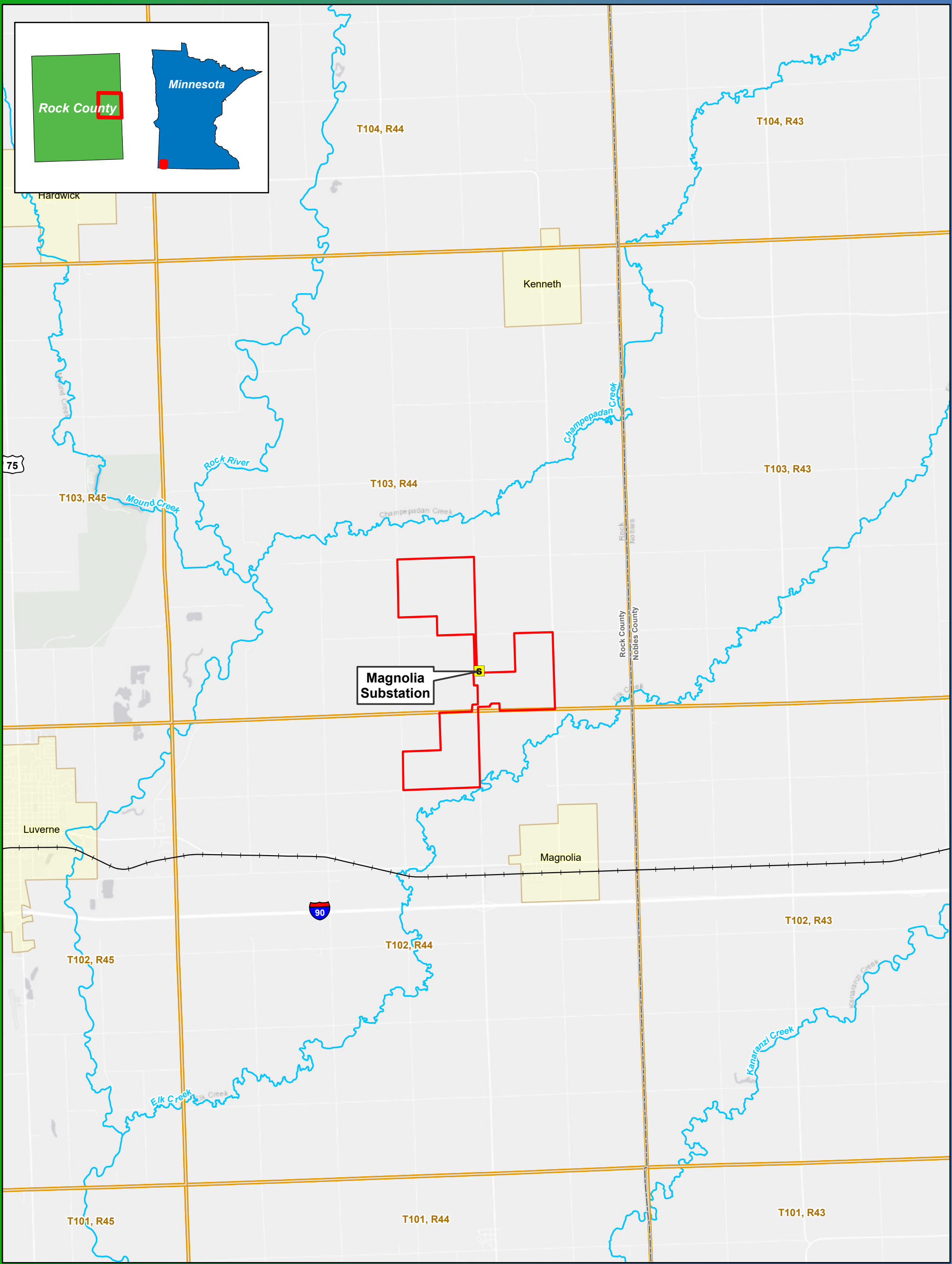


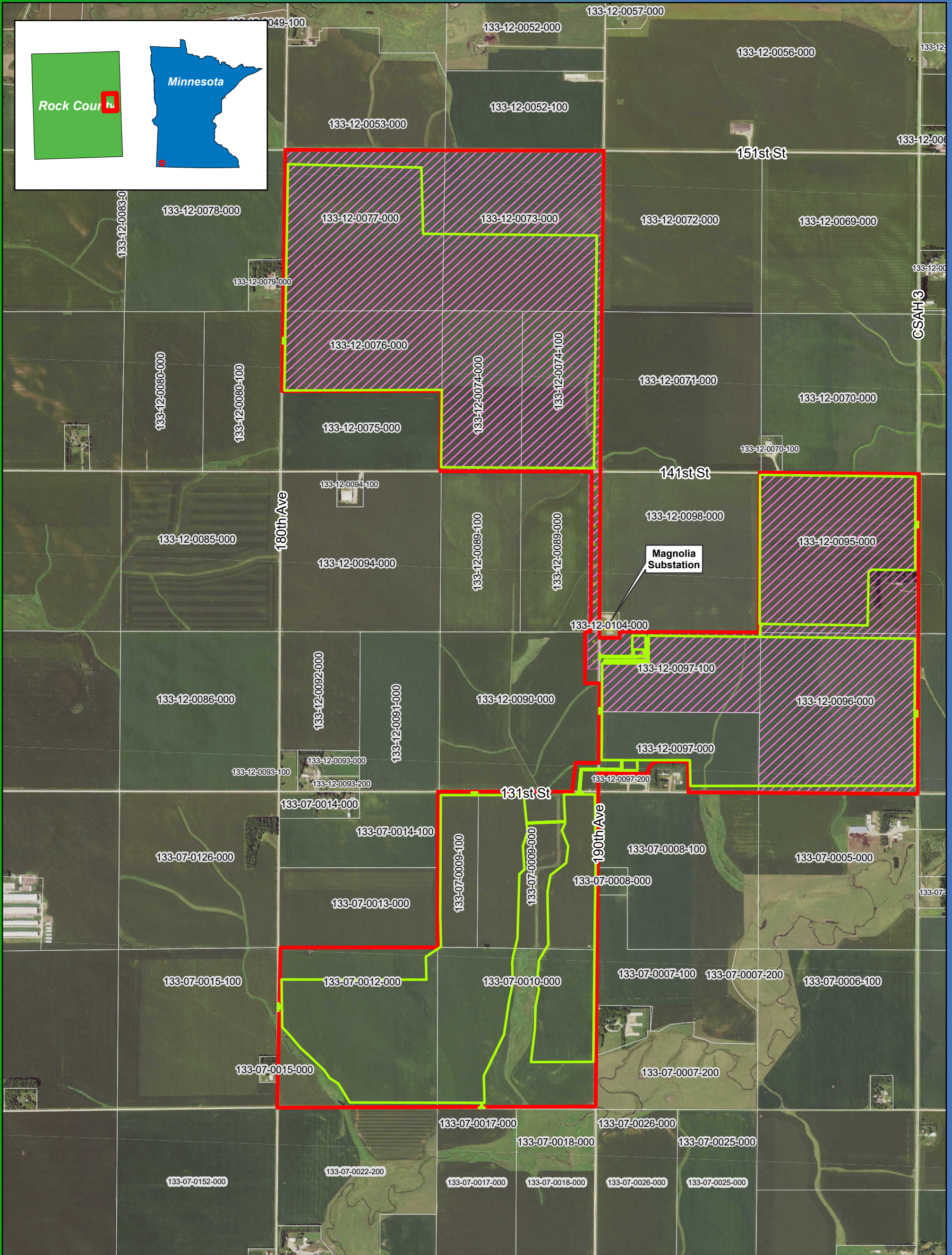
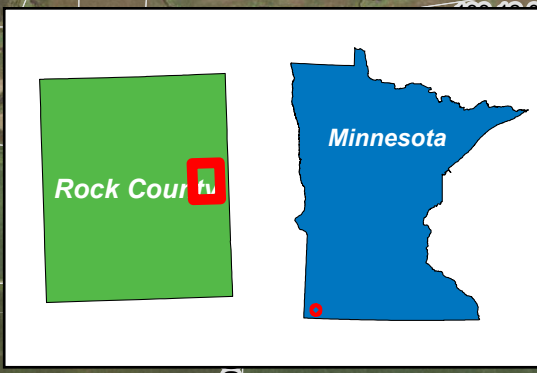
Figure 1
Project Location
Elk Creek Solar Project
Rock County, MN
43.67819, -96.09293



0 1 2 Miles

1:75,000

- Existing Substation
- Land Control Area
- City/Town
- Township
- County Boundary
- ~ NHD Named Stream
- + Railroad



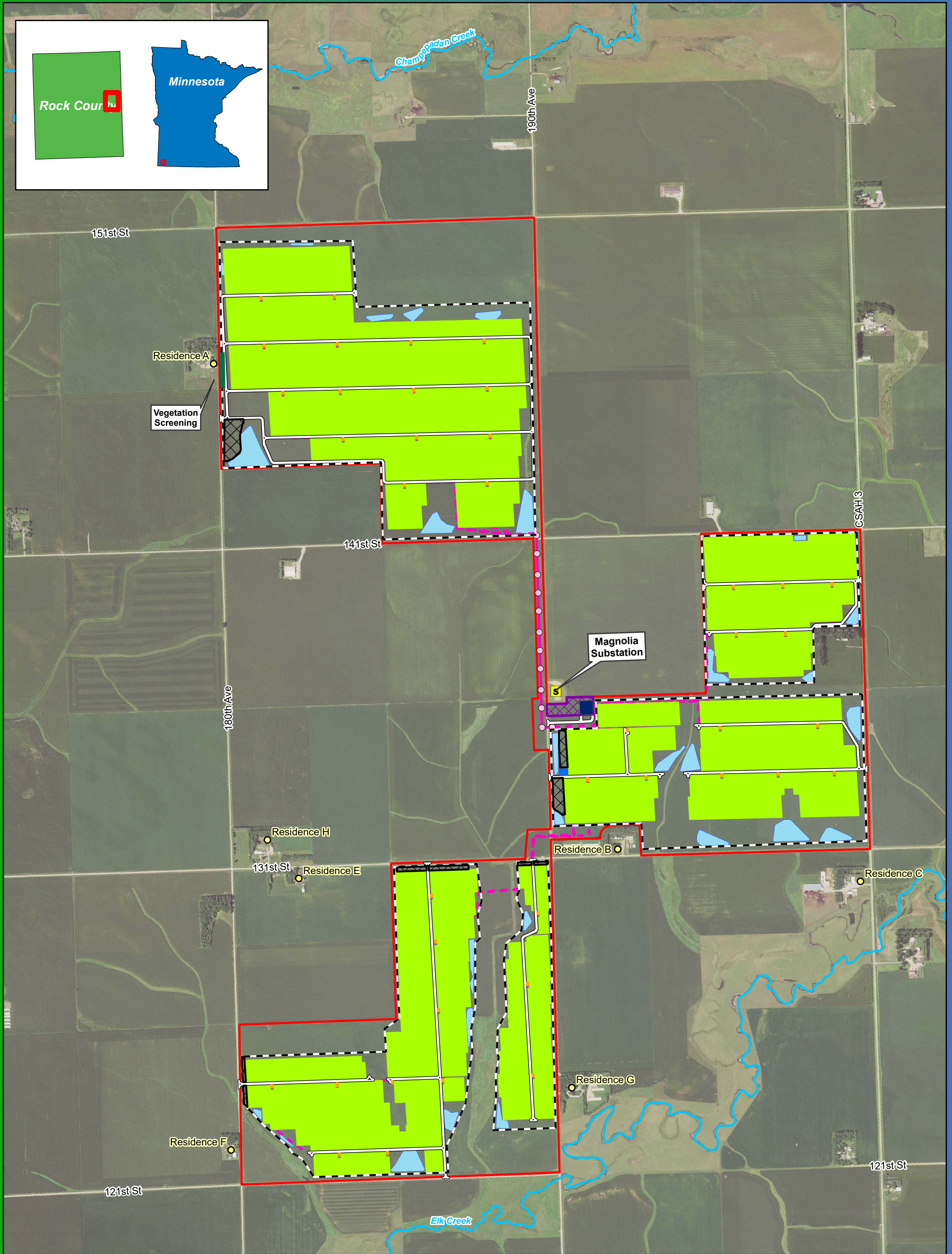
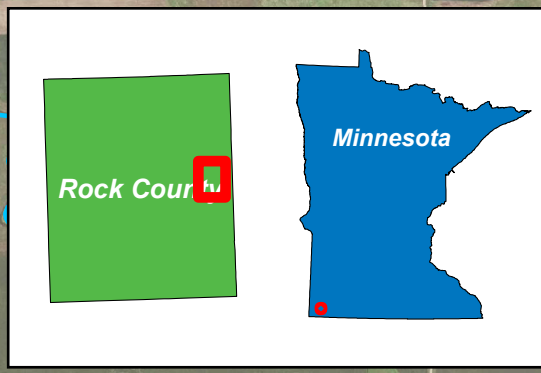
0 0.25 0.5 Miles

1:18,000

Data Source: National Grid Renewables,
MN DOT, Rock County
Imagery Source: 2021 FSA

Figure 2
2023 Land Control and
Preliminary Development Areas
Elk Creek Solar Project
Rock County, MN
43.67819, -96.09293

- Existing Substation
- Land Control Area
- 2020 Land Control Area
- Preliminary Development Area
- Parcel Boundary



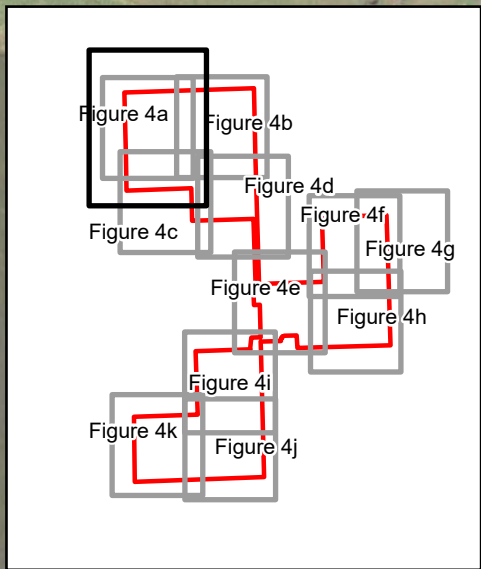
0 0.25 0.5 Miles

1:18,000

Data Source: National Grid Renewables, USGS, MN DOT
Imagery Source: 2021 FSA

Figure 3
Preliminary Project Layout
Elk Creek Solar Project
Rock County, MN
43.67819, -96.09293

- | | | |
|-------------------------------|----------------------------|-------------------------|
| ○ Adjacent Residence | — Overhead Collection Line | ■ Project Substation |
| ■ Existing Substation | — Vegetation Screening | ■ O&M Facility |
| Permanent | — Land Control Area | ■ Associated Facilities |
| Weather Stations | — Security Fence | ■ Laydown Area |
| ○ Pole | — Access Road | — NHD Stream |
| — Underground Collection Line | ■ Solar Array | — Drainage Basin |
| | ■ Inverter | |



0 250 500 Feet
1:5,500

Data Source: National Grid Renewables, USGS, MN DOT
Imagery Source: 2021 FSA

Figure 4a
Preliminary Project Layout
Elk Creek Solar Project
Rock County, MN
43.67819, -96.09293

- | | | |
|-------------------------------|----------------------------|-------------------------|
| ○ Adjacent Residence | — Overhead Collection Line | ■ Project Substation |
| ■ Existing Substation | — Vegetation Screening | ■ O&M Facility |
| ● Permanent Weather Stations | □ Land Control Area | ⊗ Associated Facilities |
| ○ Pole | ⊠ Security Fence | ⊠ Laydown Area |
| — Underground Collection Line | □ Access Road | ~ NHD Stream |
| | ■ Solar Array | ☪ Drainage Basin |
| | ■ Inverter | |



0 250 500 Feet
1:5,500

Data Source: National Grid Renewables, USGS, MN DOT
Imagery Source: 2021 FSA

Figure 4b
Preliminary Project Layout
Elk Creek Solar Project
Rock County, MN
43.67819, -96.09293

- | | | |
|-------------------------------|----------------------------|-------------------------|
| ○ Adjacent Residence | — Overhead Collection Line | ■ Project Substation |
| ■ Existing Substation | — Vegetation Screening | ■ O&M Facility |
| Permanent Weather Stations | □ Land Control Area | ⊠ Associated Facilities |
| ○ Pole | ⊠ Security Fence | ⊠ Laydown Area |
| — Underground Collection Line | □ Access Road | ~ NHD Stream |
| | ■ Solar Array | ☁ Drainage Basin |
| | ■ Inverter | |



Note: The configuration of the substation and O&M building is preliminary and subject to change with final engineering.

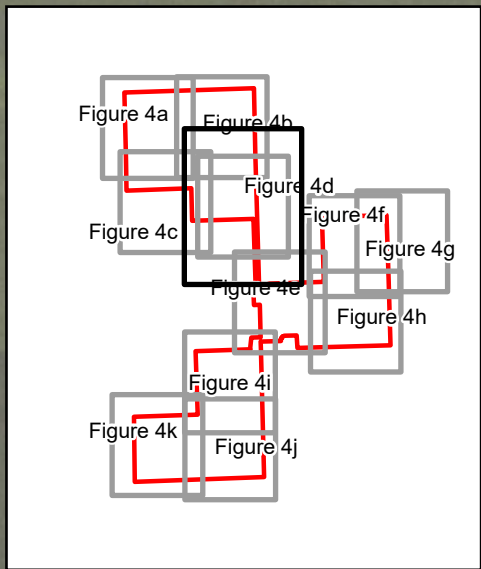
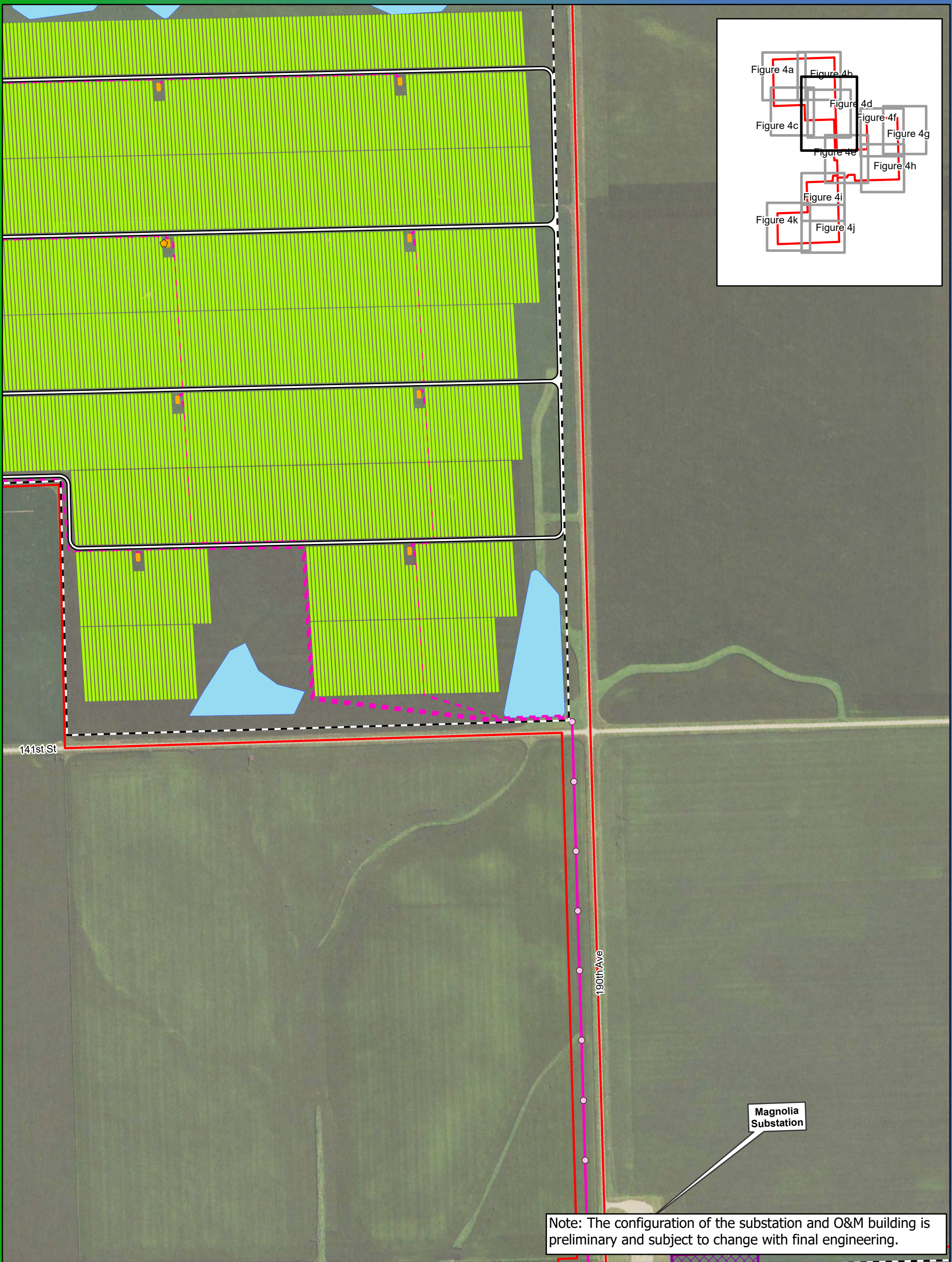


0 250 500 Feet
1:5,500

Data Source: National Grid Renewables, USGS, MN DOT
Imagery Source: 2021 FSA

Figure 4c
Preliminary Project Layout
Elk Creek Solar Project
Rock County, MN
43.67819, -96.09293

- | | | |
|-------------------------------|----------------------------|-------------------------|
| ○ Adjacent Residence | — Overhead Collection Line | ■ Project Substation |
| ■ Existing Substation | — Vegetation Screening | ■ O&M Facility |
| ● Permanent Weather Stations | □ Land Control Area | ■ Associated Facilities |
| ○ Pole | — Security Fence | ■ Laydown Area |
| — Underground Collection Line | □ Access Road | ~ NHD Stream |
| | ■ Solar Array | ■ Drainage Basin |
| | ■ Inverter | |



ELK CREEK SOLAR

0 250 500 Feet
1:5,500

Data Source: National Grid Renewables, USGS, MN DOT
Imagery Source: 2021 FSA

Figure 4d
Preliminary Project Layout
Elk Creek Solar Project
Rock County, MN
43.67819, -96.09293

Adjacent Residence	Overhead Collection Line	Project Substation
Existing Substation	Vegetation Screening	O&M Facility
Permanent Weather Stations	Land Control Area	Associated Facilities
Pole	Security Fence	Laydown Area
Underground Collection Line	Access Road	NHD Stream
	Solar Array	Drainage Basin
	Inverter	



Note: The configuration of the substation and O&M building is preliminary and subject to change with final engineering.

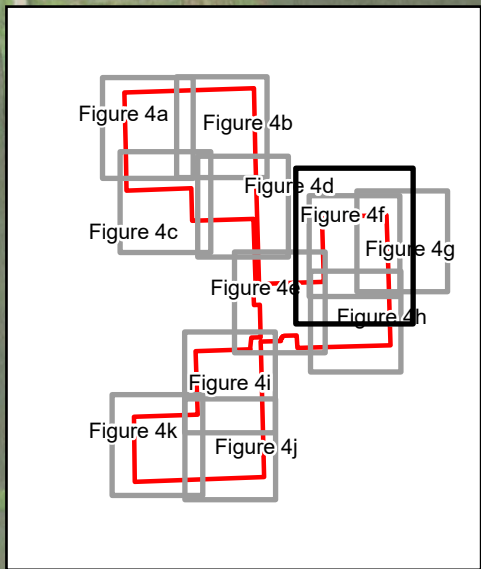


0 250 500 Feet
1:5,500

Data Source: National Grid Renewables, USGS, MN DOT
Imagery Source: 2021 FSA

Figure 4e
Preliminary Project Layout
Elk Creek Solar Project
Rock County, MN
43.67819, -96.09293

- | | | |
|-------------------------------|----------------------------|-------------------------|
| ● Adjacent Residence | — Overhead Collection Line | ■ Project Substation |
| ■ Existing Substation | — Vegetation Screening | ■ O&M Facility |
| ● Permanent Weather Stations | — Land Control Area | ■ Associated Facilities |
| ○ Pole | — Security Fence | ■ Laydown Area |
| — Underground Collection Line | — Access Road | — NHD Stream |
| | ■ Solar Array | — Drainage Basin |
| | ■ Inverter | |



Note: The configuration of the substation and O&M building is preliminary and subject to change with final engineering.

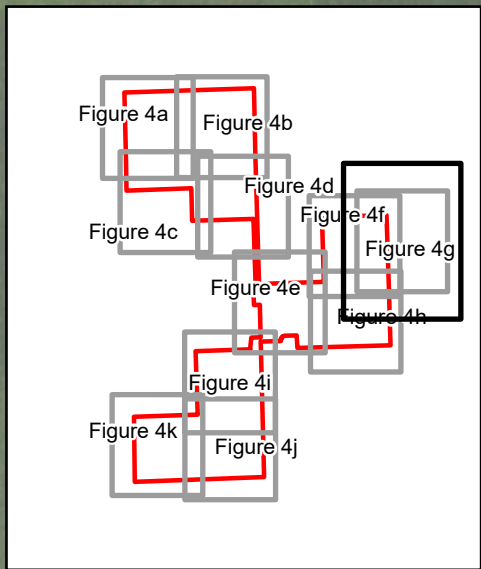


0 250 500 Feet
1:5,500

Data Source: National Grid Renewables, USGS, MN DOT
Imagery Source: 2021 FSA

Figure 4f
Preliminary Project Layout
Elk Creek Solar Project
Rock County, MN
43.67819, -96.09293

- Adjacent Residence
- Existing Substation
- Permanent Weather Stations
- Pole
- Underground Collection Line
- Overhead Collection Line
- Vegetation Screening
- Land Control Area
- Security Fence
- Access Road
- Solar Array
- Inverter
- Project Substation
- O&M Facility
- Associated Facilities
- Laydown Area
- NHD Stream
- Drainage Basin



Note: The configuration of the substation and O&M building is preliminary and subject to change with final engineering.

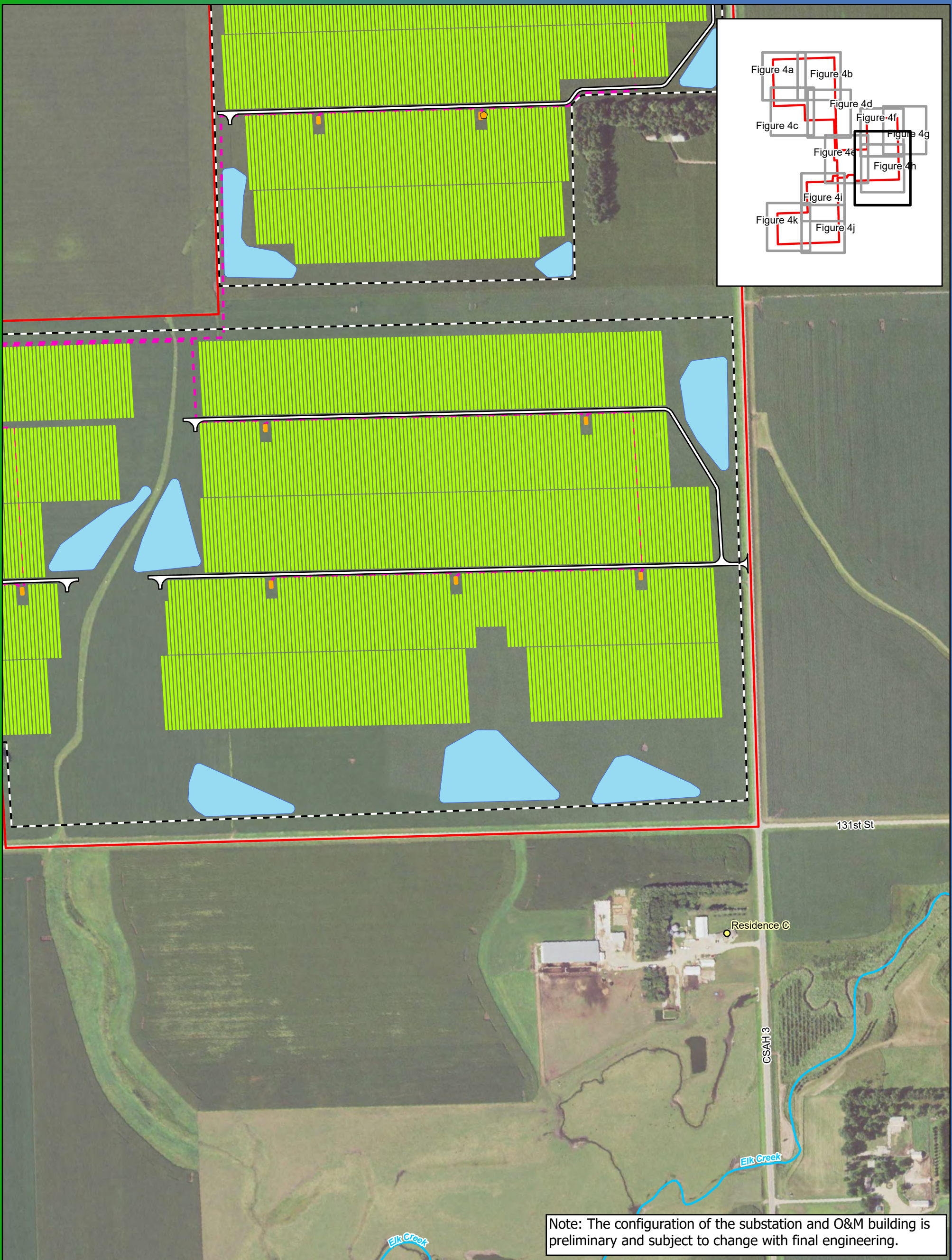


0 250 500 Feet
1:5,500

Figure 4g
Preliminary Project Layout
Elk Creek Solar Project
Rock County, MN
43.67819, -96.09293

Data Source: National Grid Renewables, USGS, MN DOT
Imagery Source: 2021 FSA

- | | | |
|-------------------------------|----------------------------|-------------------------|
| ● Adjacent Residence | — Overhead Collection Line | ■ Project Substation |
| ■ Existing Substation | — Vegetation Screening | ■ O&M Facility |
| ● Permanent Weather Stations | — Land Control Area | ■ Associated Facilities |
| ○ Pole | — Security Fence | ■ Laydown Area |
| — Underground Collection Line | — Access Road | — NHD Stream |
| | ■ Solar Array | — Drainage Basin |
| | ■ Inverter | |



Note: The configuration of the substation and O&M building is preliminary and subject to change with final engineering.

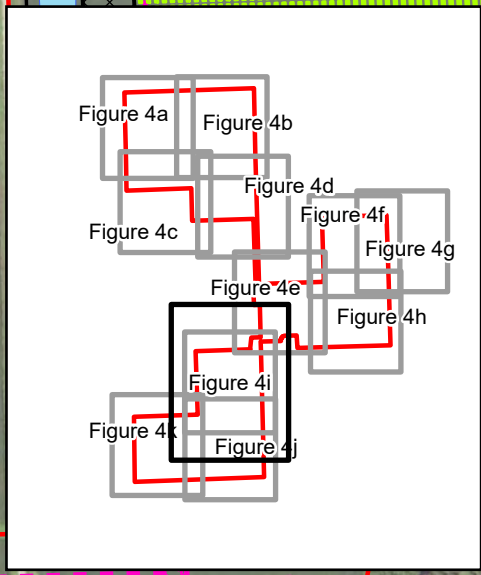


0 250 500 Feet
1:5,500

Figure 4h
Preliminary Project Layout
Elk Creek Solar Project
Rock County, MN
43.67819, -96.09293

- Adjacent Residence
- Existing Substation
- Permanent Weather Stations
- Pole
- Underground Collection Line
- Overhead Collection Line
- Vegetation Screening
- Land Control Area
- Security Fence
- Access Road
- Solar Array
- Inverter
- Project Substation
- O&M Facility
- Associated Facilities
- Laydown Area
- NHD Stream
- Drainage Basin

Data Source: National Grid Renewables, USGS, MN DOT
 Imagery Source: 2021 FSA



Note: The configuration of the substation and O&M building is preliminary and subject to change with final engineering.



0 250 500 Feet
1:5,500

Data Source: National Grid Renewables, USGS, MN DOT
Imagery Source: 2021 FSA

Figure 4i
Preliminary Project Layout
Elk Creek Solar Project
Rock County, MN
43.67819, -96.09293

- | | | |
|-----------------------------|--------------------------|-----------------------|
| Adjacent Residence | Overhead Collection Line | Project Substation |
| Existing Substation | Vegetation Screening | O&M Facility |
| Permanent Weather Stations | Land Control Area | Associated Facilities |
| Pole | Security Fence | Laydown Area |
| Underground Collection Line | Access Road | NHD Stream |
| | Solar Array | Drainage Basin |
| | Inverter | |



Note: The configuration of the substation and O&M building is preliminary and subject to change with final engineering.

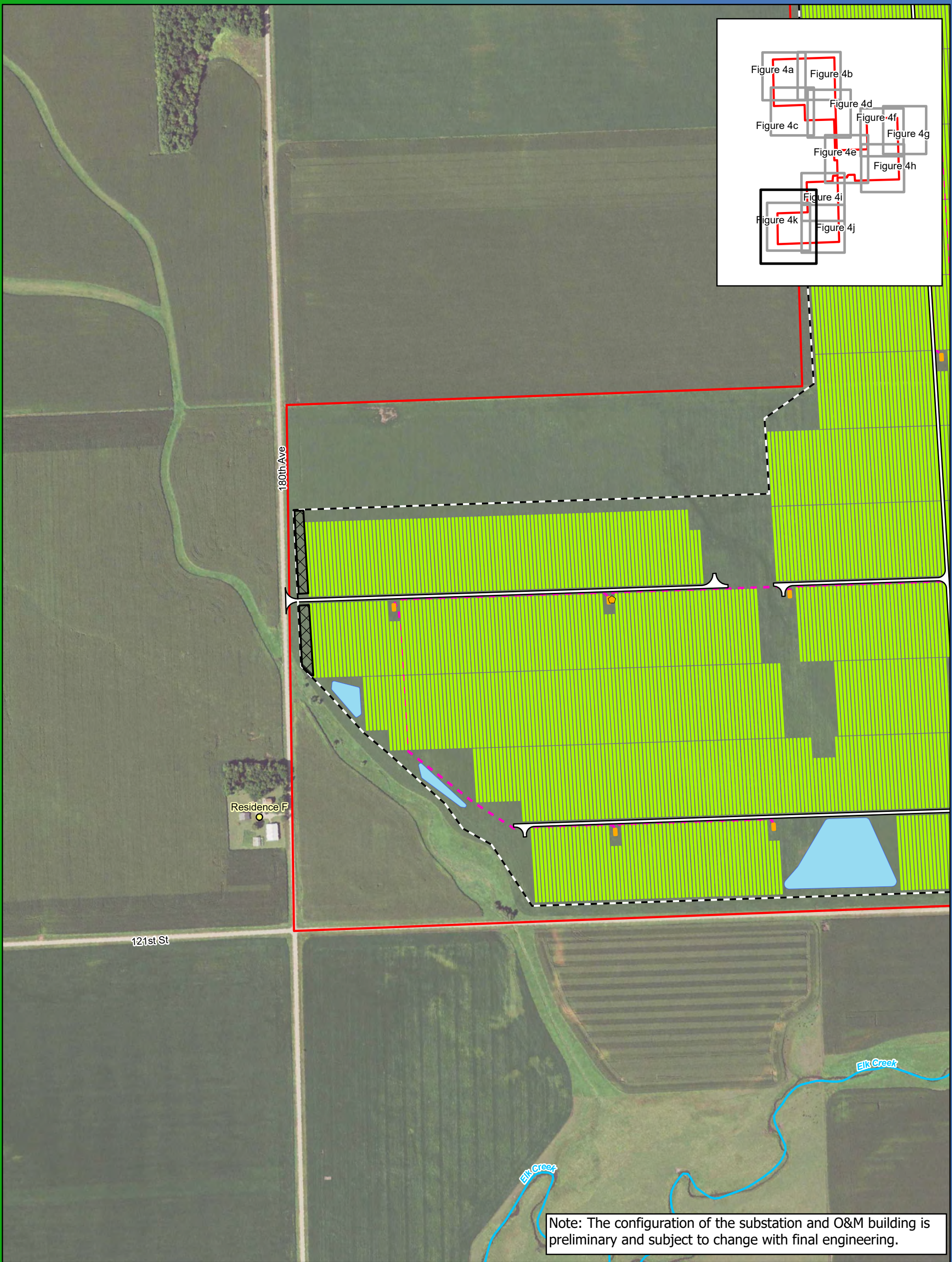


0 250 500 Feet
1:5,500

Data Source: National Grid Renewables, USGS, MN DOT
Imagery Source: 2021 FSA

Figure 4j
Preliminary Project Layout
Elk Creek Solar Project
Rock County, MN
43.67819, -96.09293

- | | | |
|-------------------------------|----------------------------|-------------------------|
| ○ Adjacent Residence | — Overhead Collection Line | ■ Project Substation |
| ■ Existing Substation | — Vegetation Screening | ■ O&M Facility |
| Permanent Weather Stations | — Land Control Area | ■ Associated Facilities |
| ○ Pole | — Security Fence | ■ Laydown Area |
| — Underground Collection Line | — Access Road | — NHD Stream |
| | ■ Solar Array | — Drainage Basin |
| | ■ Inverter | |



0 250 500 Feet
1:5,500

Data Source: National Grid Renewables, USGS, MN DOT
Imagery Source: 2021 FSA

Figure 4k
Preliminary Project Layout
Elk Creek Solar Project
Rock County, MN
43.67819, -96.09293

- | | | |
|-------------------------------|----------------------------|-------------------------|
| ○ Adjacent Residence | — Overhead Collection Line | ■ Project Substation |
| ■ Existing Substation | — Vegetation Screening | ■ O&M Facility |
| ○ Permanent Weather Stations | — Land Control Area | ■ Associated Facilities |
| ○ Pole | — Security Fence | ■ Laydown Area |
| — Underground Collection Line | — Access Road | — NHD Stream |
| | ■ Solar Array | — Drainage Basin |
| | ■ Inverter | |