



Contains Privileged Information
Do Not Distribute

0450900

Feet

1:9,600

DAIRYLAND POWER

COOPERATIVE

For Environmental Review Purposes Only

N

E

S

W

Figure 2: Aerial Map
Wabasha Relocation Project
Dairyland Power Cooperative
Wabasha County, Minnesota

Alignment

Existing

Transmission/
Distribution Line

Halfmile Study Area

100ft Right-of-Way

Proposed Substation

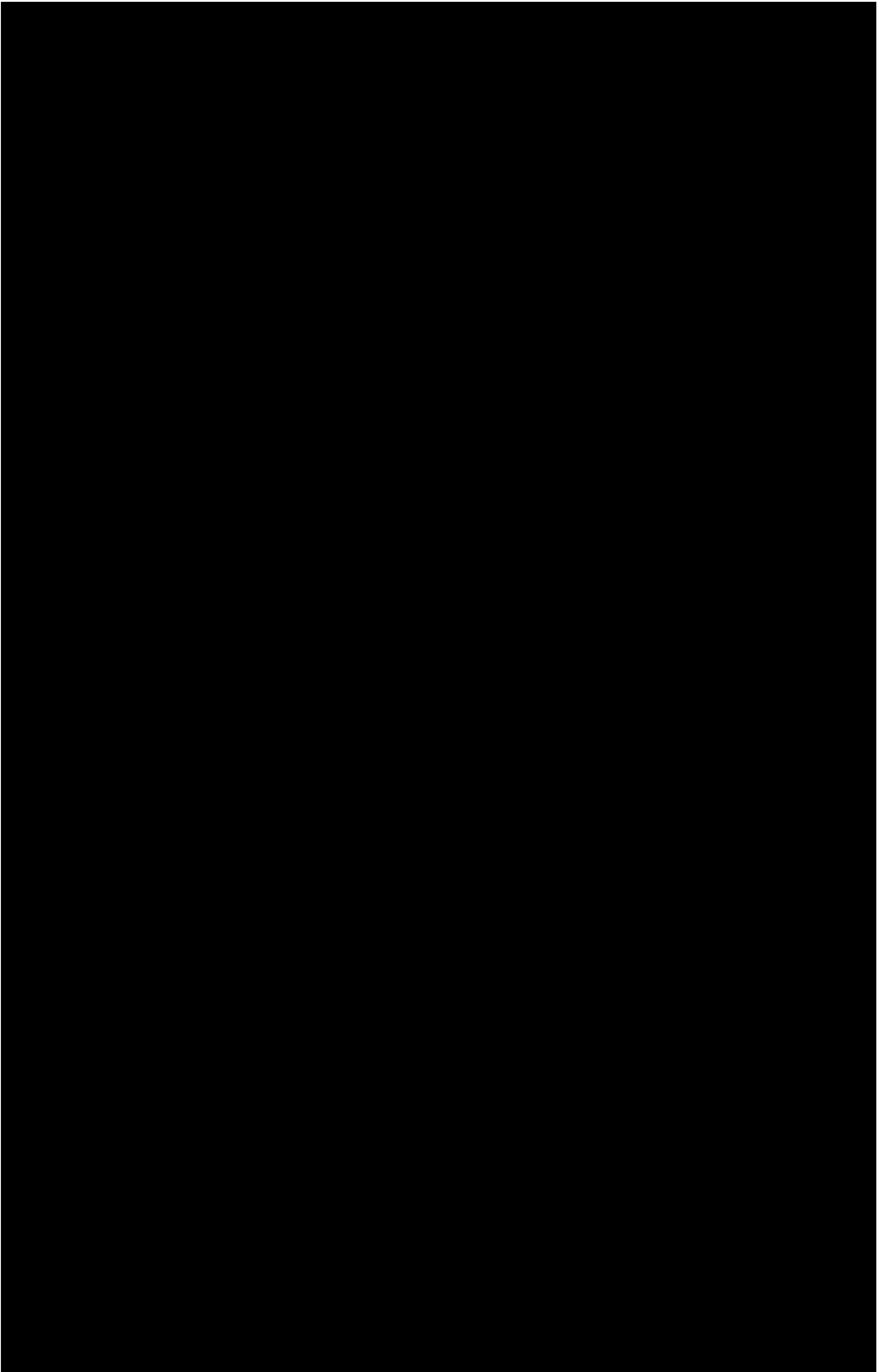
Section Boundary

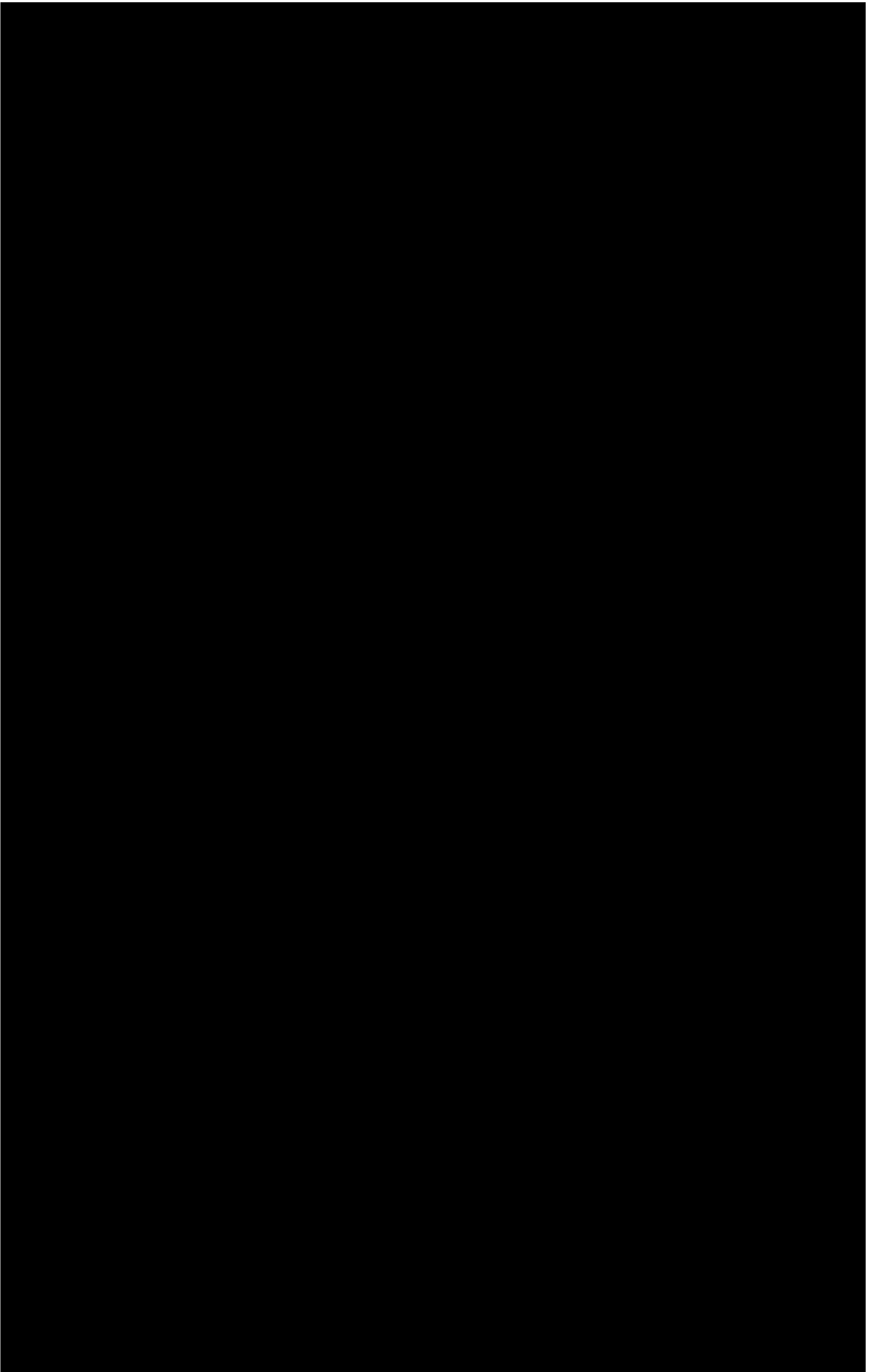
Historic Site

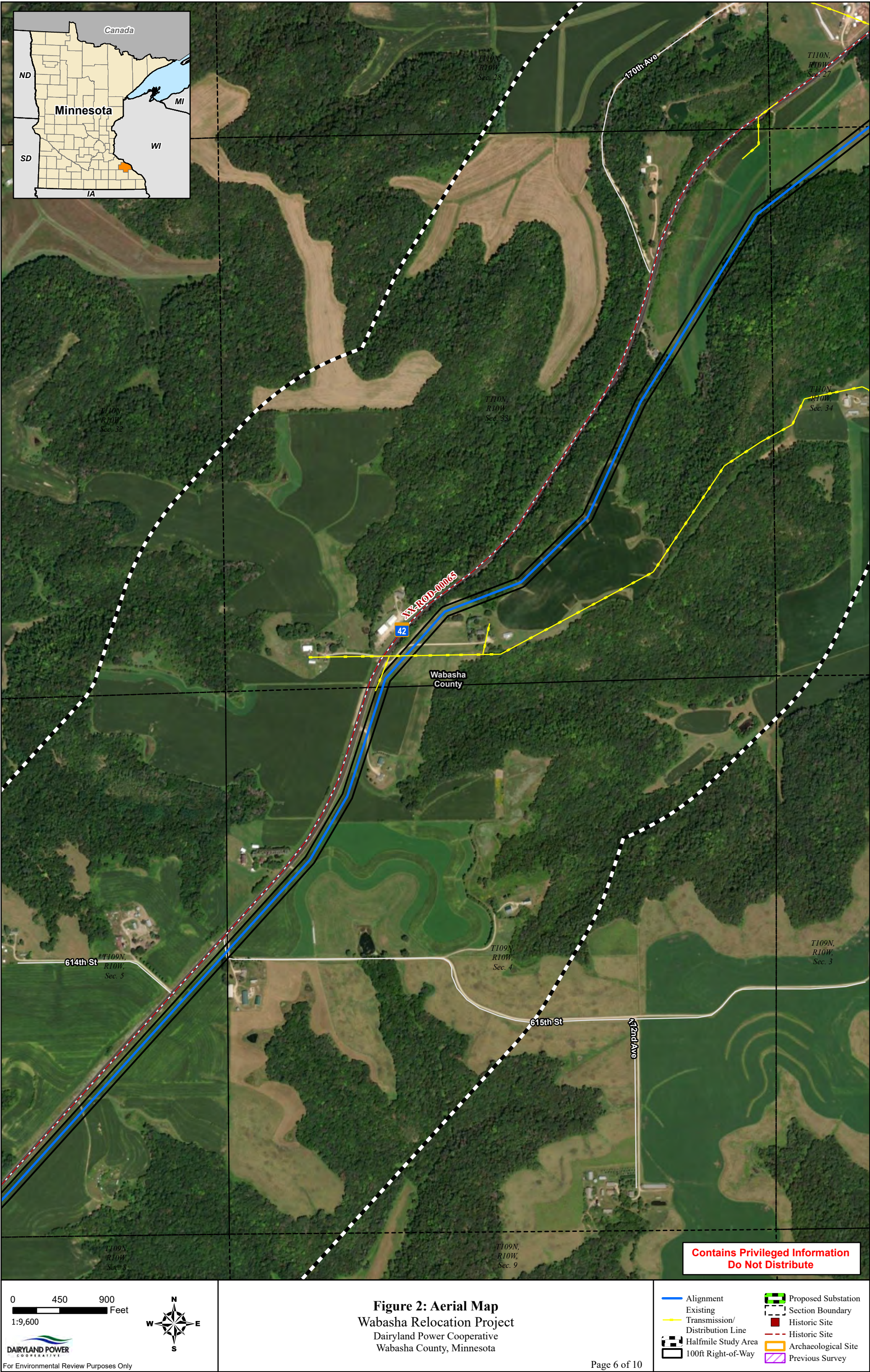
Historic Site

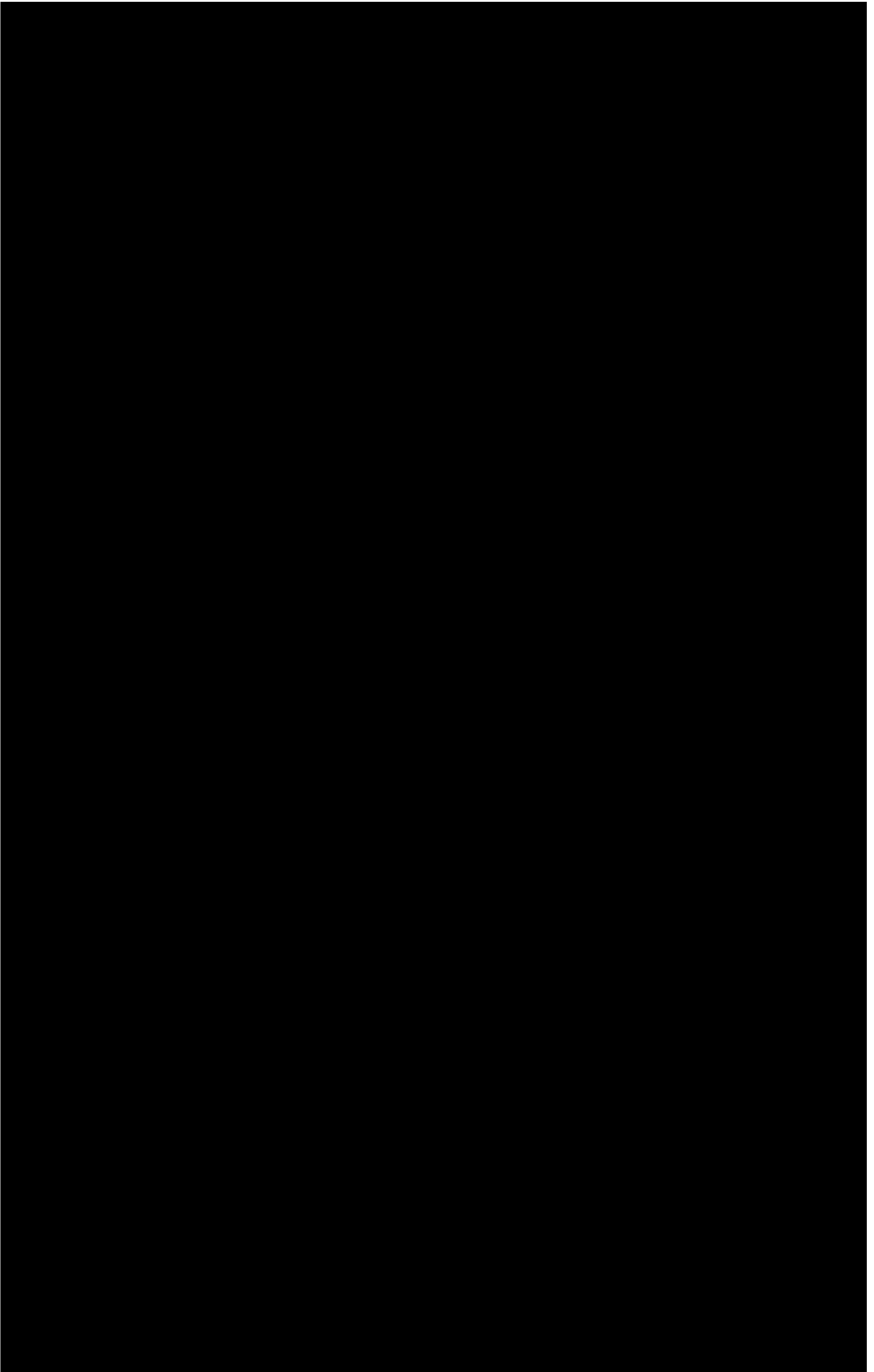
Archaeological Site

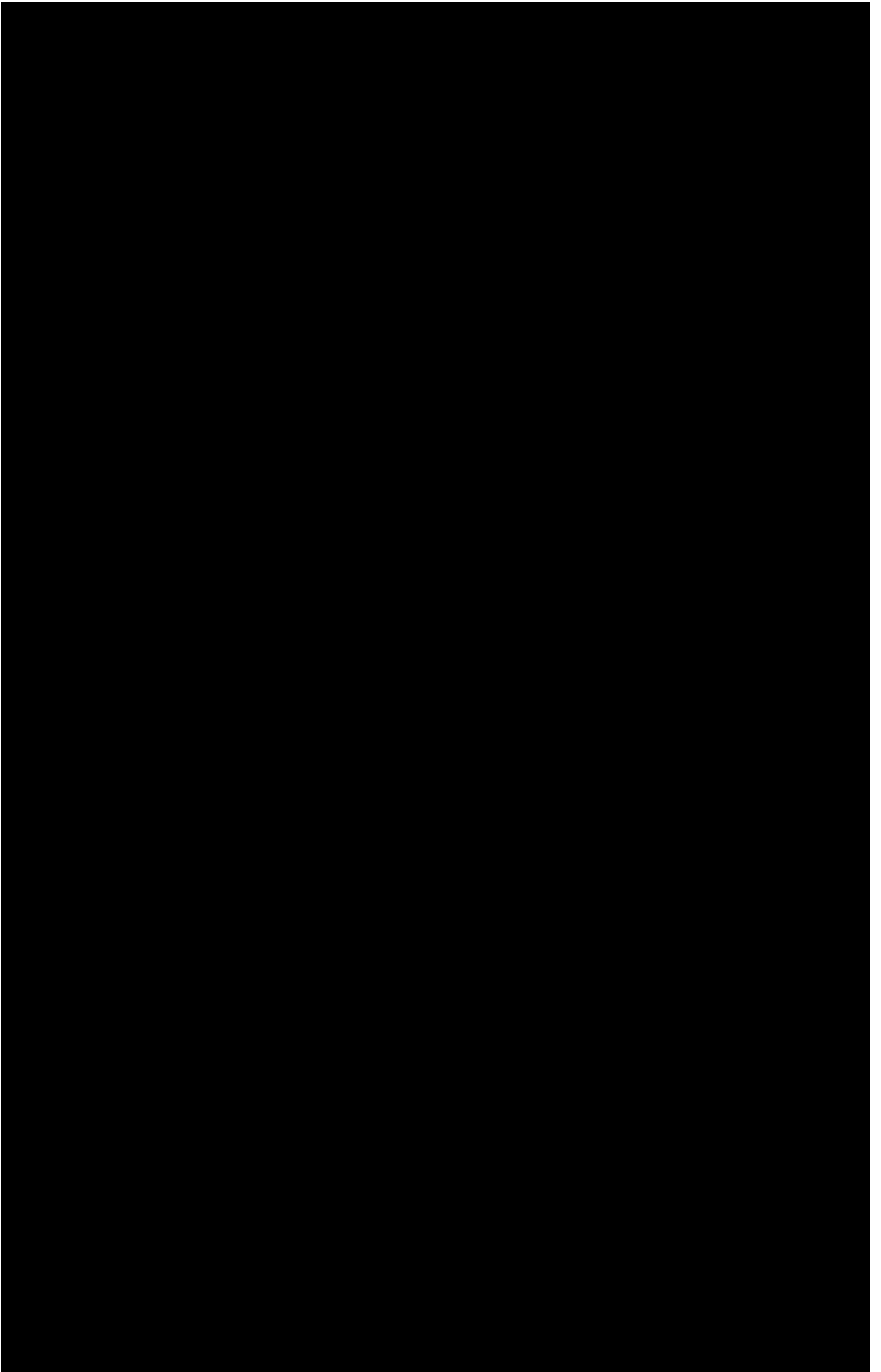
Previous Survey

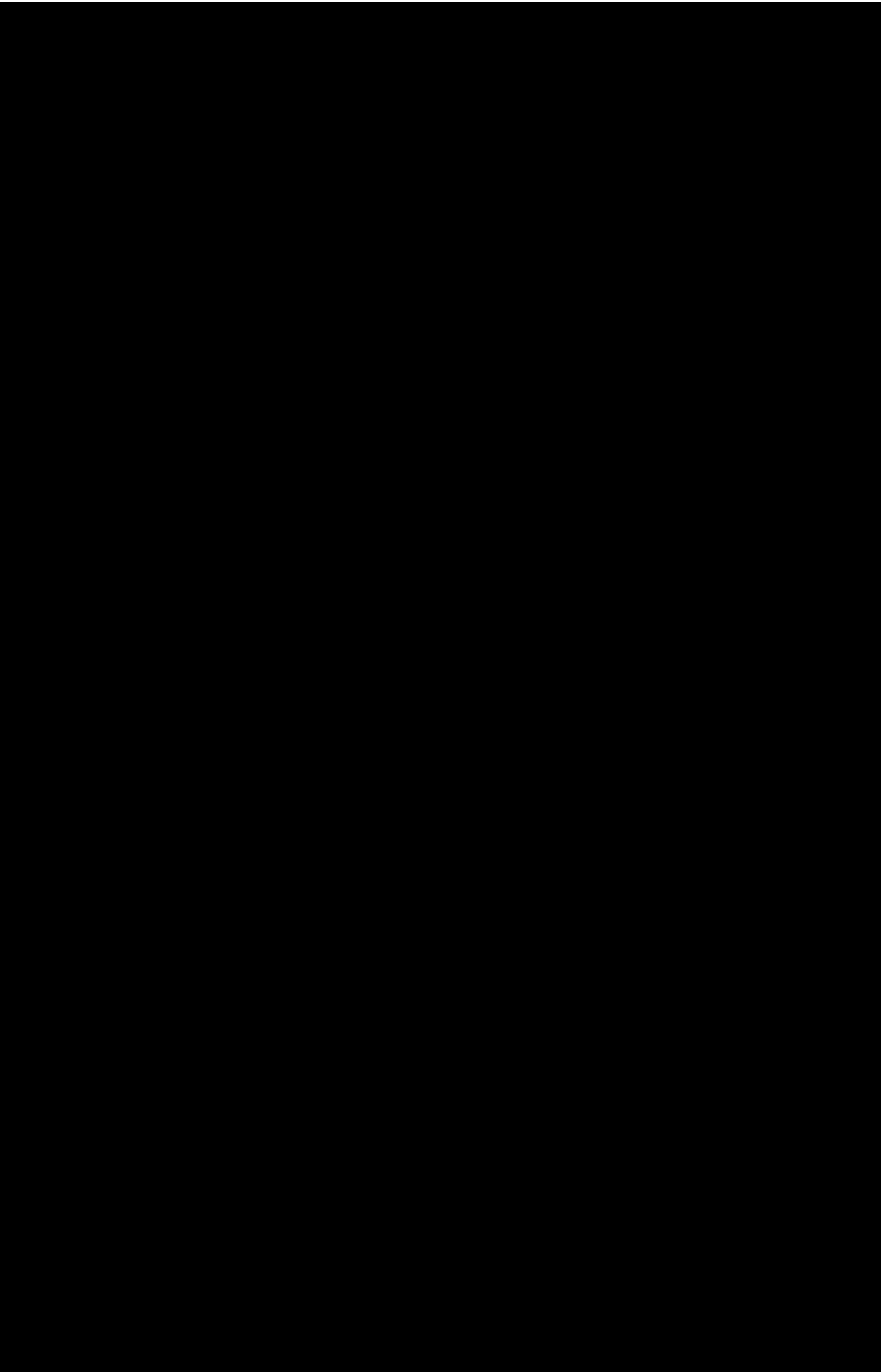


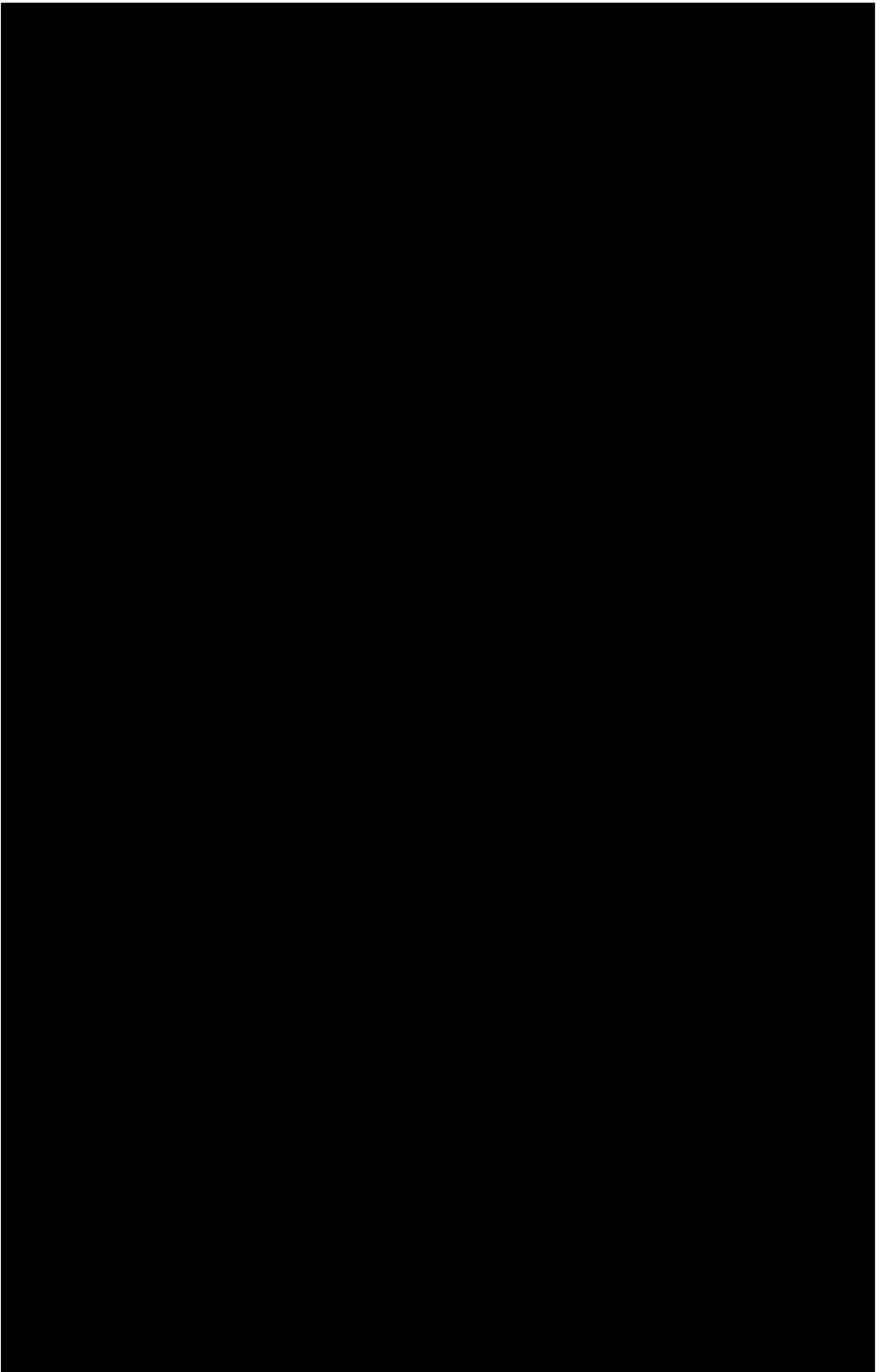












Mississippi River Parkway Commission

From: [Chris Miller](#)
To: [Kristin Lenz](#)
Cc: ["Sage Williams"](#); ["Oates, Travis M"](#); [Britta Bergland](#); ["John Anfinson"](#); [Kate Carlson](#); [Marni Karnowski](#)
Subject: RE: Dairyland Wabasha Relocation Project - Project Intro and Meeting Request
Date: Monday, November 20, 2023 10:15:37 AM
Attachments: [image.png](#)

Hi Kristin,

The Minnesota Mississippi River Parkway Commission met on November 16. The Commission appreciated your invitation to meet regarding the Dairyland Wabasha Relocation Project, and the members below were identified to represent the Commission at a meeting. All are copied on this email.

John Anfinson, MN-MRPC Vice Chair and Regional Member representing Elk River to Hastings
Kate Carlson, Regional Member representing Hastings to the Iowa Border
Marni Karnowski, Minnesota Department of Transportation appointee

I would sit in with the group and can assist with a Zoom link as needed...

Thanks much!

Chris Miller, Director
MN Mississippi River Parkway Commission
56 33rd Ave S, #283
St. Cloud, MN 56301
651-341-4196

From: Kristin Lenz <kristin.lenz@merjent.com>
Sent: Thursday, November 2, 2023 4:13 PM
To: Chris Miller <chris@togpartners.com>
Cc: 'Sage Williams' <Sage.Williams@DairylandPower.com>; 'Oates, Travis M' <travis.m.oates@sargentlundy.com>; Britta Bergland <britta.bergland@merjent.com>
Subject: RE: Dairyland Wabasha Relocation Project - Project Intro and Meeting Request

Thank you Chris,

Dairyland will be hosting a Project Open House on November 9, 2023 between 11AM-1PM and 4-6PM at the Saint Agnes Catholic Church at 115 W. Belvidere Ave. in Kellogg, MN.

We will be considering feedback received from these meetings, in addition to other agency meetings we currently have scheduled to determine if we should further refine the Proposed Route width or alignment before filing with the Minnesota Public Utilities Commission.

We will reach back out soon to connect.

Thank you,
Kristin

Kristin Lenz
Senior Project Manager
612.924.3962 direct
763.913.4740 mobile
kristin.lenz@merjent.com



1 Main Street SE, Suite 300
Minneapolis, MN 55414
612.746.3660
www.merjent.com

From: Chris Miller <chris@togpartners.com>
Sent: Thursday, November 2, 2023 4:07 PM
To: Kristin Lenz <kristin.lenz@merjent.com>
Cc: 'Sage Williams' <Sage.Williams@DairylandPower.com>; 'Oates, Travis M' <travis.m.oates@sargentlundy.com>; Britta Bergland <britta.bergland@merjent.com>
Subject: EXTERNAL: RE: Dairyland Wabasha Relocation Project - Project Intro and Meeting Request

CAUTION: This email originated from outside of Merjent.

Hi again, Kristin,

Based on response thus far and since the MN-MRPC will be meeting on November 16, I think it is most likely that the group will consider the request below and project fact sheet at that time, and then I'll be back in touch. Feel free to reach out in the meantime if you have questions or additional information to share...

Thanks!
Chris

From: Chris Miller <chris@togpartners.com>
Sent: Thursday, October 26, 2023 10:25 AM
To: 'Kristin Lenz' <kristin.lenz@merjent.com>
Cc: 'Sage Williams' <Sage.Williams@DairylandPower.com>; 'Oates, Travis M' <travis.m.oates@sargentlundy.com>; 'Britta Bergland' <britta.bergland@merjent.com>
Subject: RE: Dairyland Wabasha Relocation Project - Project Intro and Meeting Request

Hi Kristin,

Thanks so much for reaching out. I will share this with the MN Mississippi River Parkway Commission Chair and Vice Chair, and a couple of other members for guidance on how they'd like to proceed. I'll get back to you... I'm happy to gather information to carry back to Commission members for their feedback but they might be interested in a small group discussion with you, or possibly discussion at

their next regular quarterly meeting which happens to be on November 16 (so this is good timing).

Details about the Great River Road and MN Mississippi River Parkway Commission are available at - <https://www.mnmississippiriver.com/about-us/>.

Thanks again!

Chris Miller, Director
MN Mississippi River Parkway Commission
56 33rd Ave S, #283
St. Cloud, MN 56301
651-341-4196

From: Kristin Lenz <kristin.lenz@merjent.com>
Sent: Thursday, October 26, 2023 9:15 AM
To: chris@togpartners.com
Cc: Sage Williams <Sage.Williams@DairylandPower.com>; Oates, Travis M <travis.m.oates@sargentlundy.com>; Britta Bergland <britta.bergland@merjent.com>
Subject: Dairyland Wabasha Relocation Project - Project Intro and Meeting Request

Good afternoon Chris,

Dairyland Power Cooperative (Dairyland) is proposing to relocate approximately 14 miles of 161-kilovolt (kV) high voltage transmission line (HVTL) and construct a new substation in Wabasha County, Minnesota (Project). The Project starts in Plainview Township, northeast of the Town of Plainview, and traverses northeast through Highland, Watopa, and Greenfield Townships, ending east of the City of Kellogg near the Mississippi River. The Proposed Route would primarily follow State Highway 42 and would also involve a crossing of State Highway 61 (Great River Road, Designated Scenic Byway) southwest of Kellogg.

The Project is a reroute of approximately 10.4 miles of the existing Dairyland LQ34 161-kV transmission line located on the existing CapX2020 Hampton-Rochester-LaCrosse 345-kV structures. In July 2020, the Midwest Independent System Operator (MISO) approved a long-range transmission portfolio including a new Wilmarth-North Rochester-Tremval transmission line. This new 345-kV line would utilize the double circuit capability of the CapX2020 system between North Rochester and Alma, Wisconsin. Therefore, Dairyland's existing 161-kV circuit must be removed and relocated to make room for a new, second 345-kV circuit on the existing CapX2020 structures.

Dairyland is currently gathering information in preparation for filing its route permit application with the Minnesota Public Utilities Commission, which it plans to submit in early 2024.

I have attached a Project fact sheet along with a map that shows the current location of the transmission line and the initial Proposed Route. We would appreciate any input the MN Mississippi

River Parkway Commission may have on the Project and the proposed route and crossing of the Great River Road, and would like to propose a pre-application meeting to introduce the Project and review the initial route with interested Commission staff. Would there be a good time in the next few weeks?

Let us know what works best for you.

Thank you,

Kristin

Kristin Lenz

Senior Project Manager

612.924.3962 direct

763.913.4740 mobile

kristin.lenz@merjent.com



1 Main Street SE, Suite 300

Minneapolis, MN 55414

612.746.3660

www.merjent.com

This e-mail message is intended to be received only by persons entitled to receive the confidential information it may contain. E-mail messages from Merjent, Inc. may contain information that is confidential and legally privileged. Please do not read, copy, forward, or store this message unless you are an intended recipient of it. If you have received this message in error, please forward it to the sender and delete it completely from your computer system.

This e-mail message is intended to be received only by persons entitled to receive the confidential information it may contain. E-mail messages from Merjent, Inc. may contain information that is confidential and legally privileged. Please do not read, copy, forward, or store this message unless you are an intended recipient of it. If you have received this message in error, please forward it to the sender and delete it completely from your computer system.

**Dairyland Power Cooperative
Mississippi River Parkway Commission
Wabasha County Relocation Project Introduction Meeting
December 8, 2023**

Participants: John Anfinson (Mississippi River Parkway Commission), Marni Karnowski (Mississippi River Parkway Commission / MnDOT), Chris Miller (Mississippi River Parkway Commission), Sage Williams (Dairyland), Travis Oates (S&L), Andy Zorn (S&L), Britta Bergland (Merjent), Kristin Lenz (Merjent)

Lenz provided a brief intro for the Project. The Project is a relocation of Dairyland Power Cooperatives' (Dairyland's) existing 161-kV transmission line that is currently located on the CapX structures that runs roughly from the Town of Plainville northeast toward the City of Kellogg and the Mississippi River. Xcel Energy and CapX owners are moving forward with the 2nd circuit on the CapX structures, which necessitates that Dairyland vacate the 161-kV line. Dairyland has reviewed other potential route alternatives through the area. There is a quite a bit of state-managed and federally-managed lands to the east along the Mississippi River; based on Dairyland's initial review of potential routes, the proposed route along Highway 42 appears to be the most environmentally preferable because of the avoidance of these areas and the ability to be near a road right-of-way. Lenz clarified that although the 161-kV line will be removed, the CapX structures will stay; the 161-kV will be replaced by the 2nd 345-kV line by the CapX owners as a separate project.

Lenz shared the Project alignment crossing of the State Highway 61 scenic byway on the Project Viewer. Lenz indicated that Dairyland held open houses in early November 2023 and as a result of landowner input, some changes have been made to the alignment; however, the crossing of State Highway 61 has not changed from the Project Fact Sheet provided to the Mississippi River Parkway Commission (Commission). Considerations of the crossing include steep topography on the west side along State Highway 42 – Dairyland is currently planning to traverse the valley through this area. On the east side of State Highway 61, the U.S. Army Corps of Engineers (USACE) has purchased several properties – Dairyland is in communication with the USACE. Dairyland has also reached out to Wabasha County, who has informed Dairyland that in the next 10 years, there are plans to soften to curves along County Road 84. These factors were taken into consideration when designing the Proposed Route. Dairyland is currently working on developing a Certificate of Need and Route Permit application to submit to the Minnesota Public Utilities Commission (MPUC) around mid-March 2023.

Anfinson indicated that based on the aerals, it appeared there would be minimal tree clearing on both sides of State Highway 61 at the proposed crossing location. Anfinson requested that Dairyland look to minimize the tree clearing on both sides and/or try to site the poles behind the treed areas to screen the structures as much as possible. Lenz indicated that trees below the lines will be cleared, but Dairyland can look at minimizing tree clearing as much as possible. Anfinson indicated that sight lines are important to consider – a perpendicular crossing is better than paralleling the roadway because one would only see the crossing for a moment while driving down the Great River Road.

Miller indicated that other mitigation measures that the Commission recommends to protect the viewshed include:

- Minimization of tree and vegetation removal
- Setback of poles from the Great River Road to the extent possible
- Choose a color of poles that blends into the landscape

PUBLIC DOCUMENT - NONPUBLIC DATA HAS BEEN EXCISED
Dairyland Power Cooperative
Mississippi River Parkway Commission
Wabasha County Relocation Project Introduction Meeting
December 8, 2023

Miller and Karnowski requested that Dairyland provide visual simulations of before and after the crossing to understand how the new infrastructure would look. Miller requested that a scale be provided to understand the magnitude of the change.

Anfinson inquired on the span lengths. Spans are planned to be 400-800 feet, poles will be between 70-110 feet high and the poles are also planned to be weathered steel (brown).

Lenz indicated that during Dairyland's meeting with the Minnesota Department of Transportation (MnDOT), they also requested a visual simulation of the crossing, which Dairyland is planning on developing. This may also be included in the Route Permit application.

Kate Carlson is another Commissioner and local contact for the Commission that was unable to attend today; however, the other Commissioners will provide her an update on the meeting.

Karnowski inquired on the success of the open houses; Lenz and Williams responded that it was well attended, with about 60 participants. No significant environmental resource concerns were identified. Some participants expressed concerns related to electric magnetic fields and stray voltage.

The Commissioners were very appreciative of the early coordination and will reach out if anything else comes up.

From: [Chris Miller](#)
To: [Kristin Lenz](#); ["John Anfinson"](#); ["Kate Carlson"](#); ["Marni Karnowski"](#)
Cc: ["Zorn, Andrew V"](#); ["Sage Williams"](#); ["Oates, Travis M"](#); [Britta Bergland](#)
Subject: EXTERNAL: RE: Dairyland Wabasha Relocation Project - Project Introduction Meeting Notes
Date: Wednesday, December 13, 2023 2:43:02 PM
Attachments: [image002.png](#)

CAUTION: This email originated from outside of Merjent.

Hi Kristin,

Thanks so much for sending the notes – the only revision(s) we see on this end would be a correction on the spelling of John's last name – Anfinson (missing the first n in the notes). Kate has reviewed and responded to you directly.

It was nice meeting you all last week. Happy Holidays!

Chris Miller, Director
MN Mississippi River Parkway Commission
56 33rd Ave S, #283
St. Cloud, MN 56301
651-341-4196

From: Kristin Lenz <kristin.lenz@merjent.com>
Sent: Tuesday, December 12, 2023 3:04 PM
To: 'John Anfinson' <janfinson@comcast.net>; Kate Carlson <kcarlson@visitwinona.com>; Chris Miller <chris@togpartners.com>; Marni Karnowski <marni.karnowski@state.mn.us>
Cc: Zorn, Andrew V <andrew.v.zorn@sargentlundy.com>; Sage Williams <Sage.Williams@DairylandPower.com>; Oates, Travis M <travis.m.oates@sargentlundy.com>; Britta Bergland <britta.berglund@merjent.com>
Subject: RE: Dairyland Wabasha Relocation Project - Project Introduction Meeting Notes

Good afternoon,

Thank you all again for taking the time to meet with us on Friday. Attached are the meeting notes; please let us know if you have any revisions. We'll include these notes with the Minnesota Public Utilities Route Permit application.

Please reach out if you have any further questions or recommendations!

Thank you,
Kristin

Kristin Lenz
Senior Project Manager
612.924.3962 direct
763.913.4740 mobile
kristin.lenz@merjent.com



1 Main Street SE, Suite 300
Minneapolis, MN 55414
612.746.3660
www.merjent.com

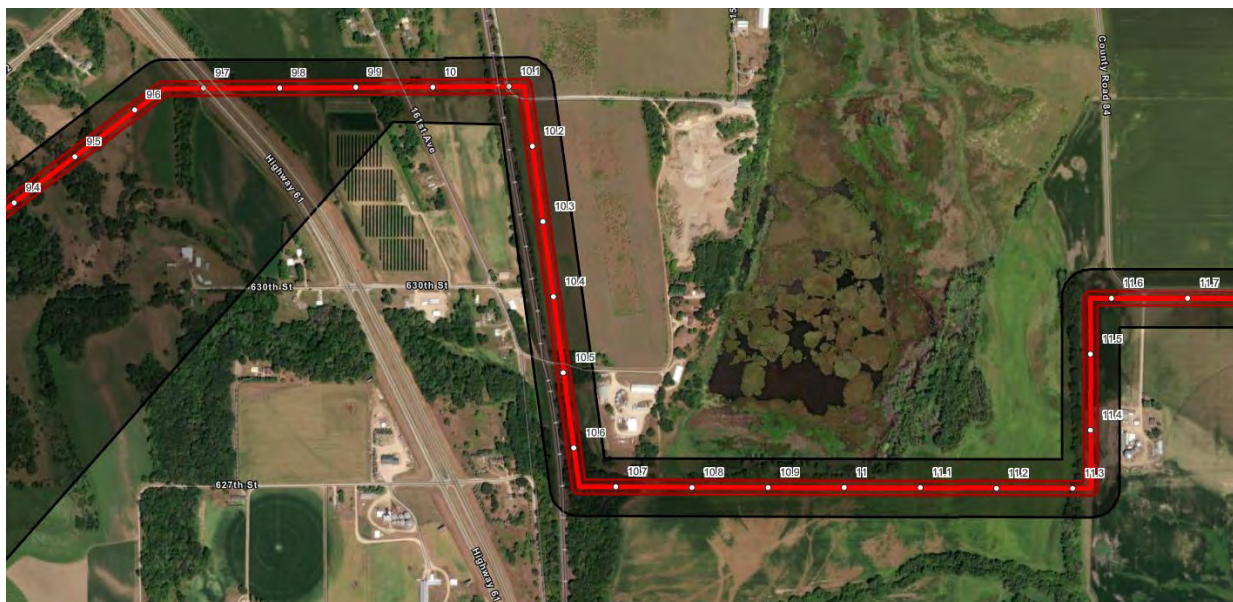
This e-mail message is intended to be received only by persons entitled to receive the confidential information it may contain. E-mail messages from Merjent, Inc. may contain information that is confidential and legally privileged. Please do not read, copy, forward, or store this message unless you are an intended recipient of it. If you have received this message in error, please forward it to the sender and delete it completely from your computer system.

From: [Britta Bergland](#)
To: "Chris Miller"
Cc: [Kristin Lenz](#); "John Anfinson"; [Marni Karnowski](#); "Sage Williams"; [Kate Carlson](#)
Subject: RE: Dairyland Power - Wabasha Relocation Project in Wabasha County, MN
Date: Friday, December 22, 2023 1:25:00 PM
Attachments: [image.png](#)
[image.png](#)
[Dairyland Power - Wabasha Relocation Project - 12-22-23.pdf](#)

Hi Chris,

Thank you for your prompt response!

Dairyland did choose to modify the route east of the Great River Road crossing since we last met, and that change is a result of a subsequent meeting with the U.S. Army Corps of Engineers (USACE). USACE staff preferred a route that crossed south of their interests on the north side of County Road 84 because it would have been difficult for them to realize their plans for development of that land with new transmission infrastructure. This change had the added benefit of avoiding the curves along County Road 84, which we know that Wabasha County would like to straighten in the future and avoids impacts to homeowners along County Road 84 and center-pivot irrigation systems. A snip of the area is included below, but we could make additional maps, if you'd like. Note the numbers on the line are "milepost markers" - not pole locations. Dairyland has not finalized pole locations.



Regarding your remaining questions, the crossing of Great River Road has remained unchanged since we met. We are in the process of creating visualizations of the proposed crossing location with images of the pole design, as requested. The route now crosses the Canadian Pacific Railroad east of 161st Avenue and then parallels the railroad north-south on the east side. The route is 820 feet from the northbound portion of Great River Road at its closest point, and 0.4 miles at its furthest point. In between the route and the road are numerous wooded areas, a tree line, the railroad, a solar array, and various buildings and businesses.

Regarding the substation, Dairyland has advanced conversations with the landowner and will be pursuing purchase of an approximately 10-acre portion of the larger parcel that was initially reviewed, so you are correct, this map now shows that smaller area. I attached the same map from the Fact Sheet here so you can have it at a larger scale.

We'd be happy to meet with you again to discuss the project or provide additional information.

Take care –

Britta

Britta Bergland
 612.746.3673 direct
 612.220.9692 mobile
britta.bergland@merjent.com



1 Main Street SE, Suite 300
 Minneapolis, MN 55414
 612.746.3660
www.merjent.com

From: Chris Miller <chris@togpartners.com>

Sent: Wednesday, December 20, 2023 9:57 AM

To: 'Sage Williams' <Sage.Williams@DairylandPower.com>

Cc: Britta Bergland <britta.bergland@merjent.com>; Kristin Lenz <kristin.lenz@merjent.com>; 'John Anfinson' <janfinson@comcast.net>; Marni Karnowski <marni.karnowski@state.mn.us>; Kate Carlson <kcarlson@visitwinona.com>

Subject: EXTERNAL: RE: Dairyland Power - Wabasha Relocation Project in Wabasha County, MN

CAUTION: This email originated from outside of Merjent.

Hi Sage,

Thank you to Britta for the notice below and new mapping. A route modification was mentioned when MN Mississippi River Parkway Commission representatives met with you and others on December 8, and it's helpful to see it on a map. I've shared the new map with those MN-MRPC members (copied on this email), and we have a few comments and questions –

- Looking at the two maps, it appears that the new route will have more impact on the Great River Road.
- The new route will parallel the Great River Road for a stretch – what is the distance, how many poles will be along the Great River Road, and could we get images of what that might look like?
- Could you share more information on the landowner concerns that resulted in the change from the previous proposed route?
- On the new map, it looks like the area for the proposed Kellogg substation is now substantially smaller. Is that correct? It's helpful in comparing the overall changes from the previous map.

Let me know if you have questions for us, and/or would like to set up a meeting and I'll be happy to help coordinate.

Thanks again,

Chris Miller, Director
MN Mississippi River Parkway Commission
56 33rd Ave S, #283
St. Cloud, MN 56301
651-341-4196

From: Britta Bergland <britta.bergland@merjent.com>

Sent: Monday, December 18, 2023 2:55 PM

To: chris@togpartners.com

Cc: Sage Williams <Sage.Williams@DairylandPower.com>; Kristin Lenz <kristin.lenz@merjent.com>

Subject: Dairyland Power - Wabasha Relocation Project in Wabasha County, MN

Dear Chris Miller:

Dairyland Power Cooperative (Dairyland) is proposing to relocate approximately 13.3 miles of 161-kilovolt (kV) high voltage transmission line and construct a new substation in Wabasha County, Minnesota (the Wabasha Relocation Project, or the Project). The Project starts in Plainview Township, northeast of the Town of Plainview, and traverses northeast through Highland, Watopa, and Greenfield Townships, ending east of the City of Kellogg near the Mississippi River. More information on the Project, along with a Project map, is available in the attached fact sheet.

Dairyland plans to file a joint Certificate of Need and Route Permit application with the Minnesota Public Utilities Commission in March 2024. Dairyland would appreciate any input you may have on the Project. Please reach out to Sage Williams with Dairyland at 608-791-2993 or Sage.Williams@Dairylandpower.com with questions, written comments, or a request for a meeting.

Thank you –

Britta Bergland [on behalf of Sage Williams, Dairyland Power Cooperative]

Britta Bergland
612.746.3673 direct
612.220.9692 mobile
britta.bergland@merjent.com



1 Main Street SE, Suite 300
Minneapolis, MN 55414
612.746.3660
www.merjent.com

This e-mail message is intended to be received only by persons entitled to receive the confidential information it may contain. E-mail messages from Merjent, Inc. may contain information that is confidential and legally privileged. Please do not read, copy, forward, or store this message unless you are an intended recipient of it. If you have received this message in error, please forward it to the sender and delete it completely from your computer system.



From: [Chris Miller](#)
To: [Britta Bergland](#)
Cc: [Kristin Lenz](#); ["John Anfinson"](#); ["Marni Karnowski"](#); ["Sage Williams"](#); ["Kate Carlson"](#)
Subject: RE: Dairyland Power - Wabasha Relocation Project in Wabasha County, MN
Date: Thursday, January 4, 2024 8:47:28 AM
Attachments: [image.png](#); [image.png](#)

Hi Britta,

Thanks so much for the additional information. Our team looks forward to reviewing the visual simulations when available and doesn't have further questions right now.

Happy New Year!

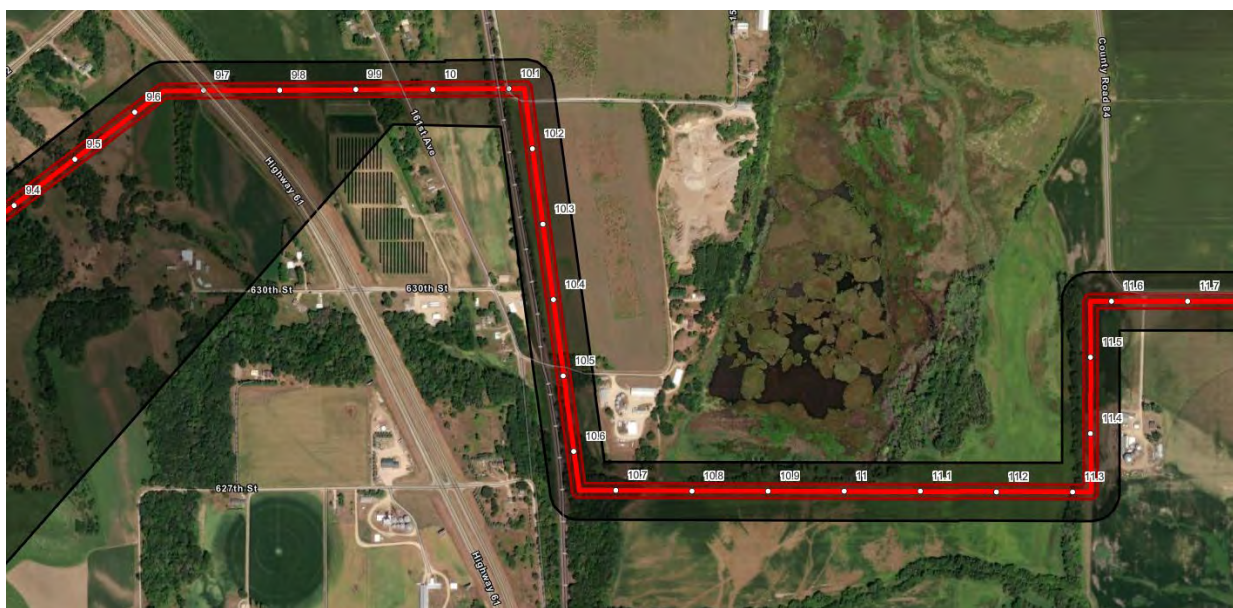
Chris

From: Britta Bergland <britta.bergland@merjent.com>
Sent: Friday, December 22, 2023 1:26 PM
To: Chris Miller <chris@togpartners.com>
Cc: Kristin Lenz <kristin.lenz@merjent.com>; 'John Anfinson' <janfinson@comcast.net>; Marni Karnowski <marni.karnowski@state.mn.us>; 'Sage Williams' <Sage.Williams@DairylandPower.com>; Kate Carlson <kcarlson@visitwinona.com>
Subject: RE: Dairyland Power - Wabasha Relocation Project in Wabasha County, MN

Hi Chris,

Thank you for your prompt response!

Dairyland did choose to modify the route east of the Great River Road crossing since we last met, and that change is a result of a subsequent meeting with the U.S. Army Corps of Engineers (USACE). USACE staff preferred a route that crossed south of their interests on the north side of County Road 84 because it would have been difficult for them to realize their plans for development of that land with new transmission infrastructure. This change had the added benefit of avoiding the curves along County Road 84, which we know that Wabasha County would like to straighten in the future and avoids impacts to homeowners along County Road 84 and center-pivot irrigation systems. A snippet of the area is included below, but we could make additional maps, if you'd like. Note the numbers on the line are "milepost markers"- not pole locations. Dairyland has not finalized pole locations.



Regarding your remaining questions, the crossing of Great River Road has remained unchanged since we met. We are in the process of creating visualizations of the proposed crossing location with images of the pole design, as requested. The route now crosses the Canadian Pacific Railroad east of 161st Avenue and then parallels the railroad north-south on the east side. The route is 820 feet from the northbound portion of Great River Road at its closest point, and 0.4 miles at its furthest point. In between the route and the road are numerous wooded areas, a tree line, the railroad, a solar array, and various buildings and businesses.

Regarding the substation, Dairyland has advanced conversations with the landowner and will be pursuing purchase of an approximately 10-acre portion of the larger parcel that was initially reviewed, so you are correct, this map now shows that smaller area. I attached the same map from the Fact Sheet here so you can have it at a larger scale.

We'd be happy to meet with you again to discuss the project or provide additional information.

Take care –

Britta

Britta Bergland
612.746.3673 direct
612.220.9692 mobile
britta.bergland@merjent.com



1 Main Street SE, Suite 300
Minneapolis, MN 55414
612.746.3660
www.merjent.com

From: Chris Miller <chris@togpartners.com>

Sent: Wednesday, December 20, 2023 9:57 AM

To: 'Sage Williams' <Sage.Williams@DairylandPower.com>

Cc: Britta Bergland <britta.bergland@merjent.com>; Kristin Lenz <kristin.lenz@merjent.com>; 'John Anfinson' <janfinson@comcast.net>; Marni Karnowski <marni.karnowski@state.mn.us>; Kate Carlson <kcarlson@visitwinona.com>

Subject: EXTERNAL: RE: Dairyland Power - Wabasha Relocation Project in Wabasha County, MN

CAUTION: This email originated from outside of Merjent.

Hi Sage,

Thank you to Britta for the notice below and new mapping. A route modification was mentioned when MN Mississippi River Parkway Commission representatives met with you and others on December 8, and it's helpful to see it on a map. I've shared the new map with those MN-MRPC members (copied on this email), and we have a few comments and questions –

- Looking at the two maps, it appears that the new route will have more impact on the Great River Road.
- The new route will parallel the Great River Road for a stretch – what is the distance, how many poles will be along the Great River Road, and could we get images of what that might look like?
- Could you share more information on the landowner concerns that resulted in the change from the previous proposed route?
- On the new map, it looks like the area for the proposed Kellogg substation is now substantially smaller. Is that correct? It's helpful in comparing the overall changes from the previous map.

Let me know if you have questions for us, and/or would like to set up a meeting and I'll be happy to help coordinate.

Thanks again,

Chris Miller, Director
MN Mississippi River Parkway Commission
56 33rd Ave S, #283
St. Cloud, MN 56301
651-341-4196

From: Britta Bergland <britta.bergland@merjent.com>

Sent: Monday, December 18, 2023 2:55 PM

To: chris@togpartners.com

Cc: Sage Williams <Sage.Williams@DairylandPower.com>; Kristin Lenz <kristin.lenz@merjent.com>

Subject: Dairyland Power - Wabasha Relocation Project in Wabasha County, MN

Dear Chris Miller:

Dairyland Power Cooperative (Dairyland) is proposing to relocate approximately 13.3 miles of 161-kilovolt (kV) high voltage transmission line and construct a new substation in Wabasha County, Minnesota (the Wabasha Relocation Project, or the Project). The Project starts in Plainview Township, northeast of the Town of Plainview, and traverses northeast through Highland, Watopa, and Greenfield Townships, ending east of the City of Kellogg near the Mississippi River. More information on the Project, along with a Project map, is available in the attached fact sheet.

Dairyland plans to file a joint Certificate of Need and Route Permit application with the Minnesota Public Utilities Commission in March 2024. Dairyland would appreciate any input you may have on the Project. Please reach out to Sage Williams with Dairyland at 608-791-2993 or Sage.Williams@Dairylandpower.com with questions, written comments, or a request for a meeting.

Thank you –

Britta Bergland [on behalf of Sage Williams, Dairyland Power Cooperative]

Britta Bergland
612.746.3673 direct
612.220.9692 mobile
britta.bergland@merjent.com



1 Main Street SE, Suite 300
Minneapolis, MN 55414
612.746.3660
www.merjent.com

This e-mail message is intended to be received only by persons entitled to receive the confidential information it may contain. E-mail messages from Merjent, Inc. may contain information that is confidential and legally privileged. Please do not read, copy, forward, or store this message unless you are an intended recipient of it. If you have received this message in error, please forward it to the sender and delete it completely from your computer system.

This e-mail message is intended to be received only by persons entitled to receive the confidential information it may contain. E-mail messages from Merjent, Inc. may contain information that is confidential and legally privileged. Please do not read, copy, forward, or store this message unless you are an intended recipient of it. If you have received this message in error, please forward it to the sender and delete it completely from your computer system.

From: Britta Bergland
Sent: Wednesday, March 13, 2024 4:28 PM
To: Chris Miller
Cc: Kristin Lenz; 'John Anfinson'; 'Marni Karnowski'; 'Sage Williams'; 'Kate Carlson'
Subject: RE: Dairyland Power - Wabasha Relocation Project in Wabasha County, MN
Attachments: DPC_Wabasha_Project_Hwy_61_Visualization_20240313.pdf; DPC_Wabasha_Project_Hwy_61_Overview_Map_20240313.pdf

Good afternoon –

I'm writing today with an update on Dairyland's Wabasha Relocation Project (the Project) in Wabasha County, Minnesota.

Dairyland has prepared visualizations of the Highway 61/Great River Road crossing– please see attached. I've also attached an overview map with a close-up of the Project relative to the highway crossing.

As the visualizations show, there would be a new visual impact because of the Project. On the west side of U.S. Highway 61, although some trees will be cleared within the 100-foot-wide right-of-way, Dairyland placed the Proposed Alignment to minimize tree clearing. The westerly pole will be shielded from view to some extent by the remaining forested area (see Diagram 8-3). Regarding the east side of U.S. Highway 61, Dairyland has placed the easterly alignment in an area where minimal large tree removal will occur on the north side of the Proposed Alignment (see Diagrams 8-1 and 8-2). The south side of the alignment is presently sparsely vegetated. The span length between the two poles is approximately 800 feet, which is near the maximum span length of 1,000 feet. The poles will be red/brown (weathered steel), which will allow them to blend with existing colors in the area. The crossing will also occur perpendicular to the road.

Dairyland intends to file its Certificate of Need and Route Permit application near the end of March 2024. We will also be sending these visualizations along to the Minnesota Department of Transportation (Stacy Kotch Egstad) as part of their ENM review process.

We'd be happy to discuss the Project and these visualizations with you if that would be helpful. Please reach out if there is anything we can provide.

Thank you!

Britta

Britta Bergland
612.746.3673 direct
612.472.0329 mobile
britta.bergland@merjent.com



1 Main Street SE, Suite 300
Minneapolis, MN 55414
612.746.3660
www.merjent.com

From: Britta Bergland
Sent: Thursday, January 4, 2024 9:28 AM
To: Chris Miller <chris@togpartners.com>
Cc: Kristin Lenz <kristin.lenz@merjent.com>; 'John Anfinson' <janfinson@comcast.net>; 'Marni Karnowski' <marni.karnowski@state.mn.us>; 'Sage Williams' <Sage.Williams@DairylandPower.com>; 'Kate Carlson' <kcarlson@visitwinona.com>
Subject: RE: Dairyland Power - Wabasha Relocation Project in Wabasha County, MN

Thanks for the reply - We will keep you posted. Happy New Year as well!

Britta

Britta Bergland
612.746.3673 direct
612.220.9692 mobile
britta.bergland@merjent.com



1 Main Street SE, Suite 300
Minneapolis, MN 55414
612.746.3660
www.merjent.com

From: Chris Miller <chris@togpartners.com>
Sent: Thursday, January 4, 2024 8:47 AM
To: Britta Bergland <britta.bergland@merjent.com>
Cc: Kristin Lenz <kristin.lenz@merjent.com>; 'John Anfinson' <janfinson@comcast.net>; 'Marni Karnowski' <marni.karnowski@state.mn.us>; 'Sage Williams' <Sage.Williams@DairylandPower.com>; 'Kate Carlson' <kcarlson@visitwinona.com>
Subject: RE: Dairyland Power - Wabasha Relocation Project in Wabasha County, MN

Hi Britta,

Thanks so much for the additional information. Our team looks forward to reviewing the visual simulations when available and doesn't have further questions right now.

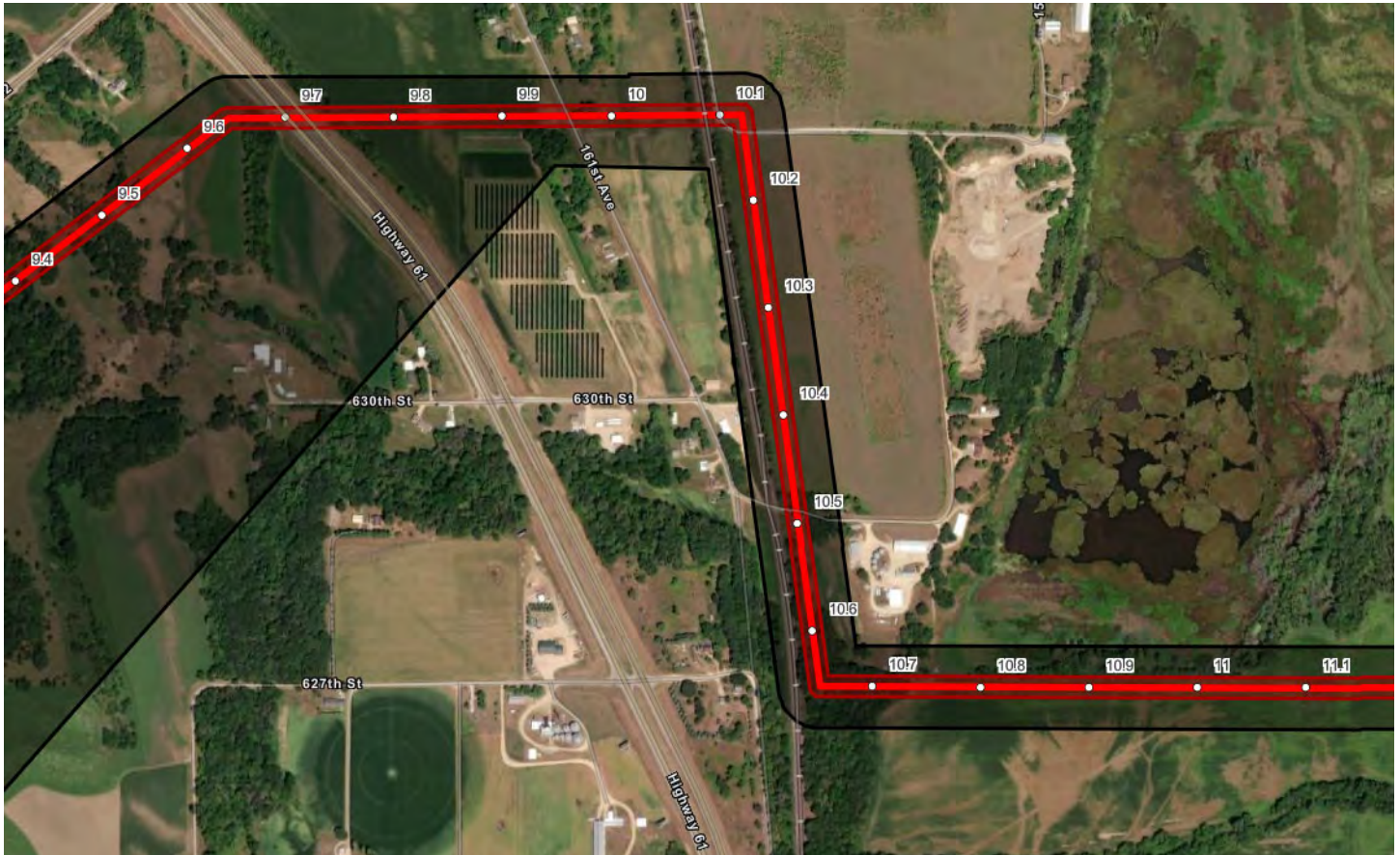
Happy New Year!
Chris

From: Britta Bergland <britta.bergland@merjent.com>
Sent: Friday, December 22, 2023 1:26 PM
To: Chris Miller <chris@togpartners.com>
Cc: Kristin Lenz <kristin.lenz@merjent.com>; 'John Anfinson' <janfinson@comcast.net>; Marni Karnowski <marni.karnowski@state.mn.us>; 'Sage Williams' <Sage.Williams@DairylandPower.com>; Kate Carlson <kcarlson@visitwinona.com>
Subject: RE: Dairyland Power - Wabasha Relocation Project in Wabasha County, MN

Hi Chris,

Thank you for your prompt response!

Dairyland did choose to modify the route east of the Great River Road crossing since we last met, and that change is a result of a subsequent meeting with the U.S. Army Corps of Engineers (USACE). USACE staff preferred a route that crossed south of their interests on the north side of County Road 84 because it would have been difficult for them to realize their plans for development of that land with new transmission infrastructure. This change had the added benefit of avoiding the curves along County Road 84, which we know that Wabasha County would like to straighten in the future and avoids impacts to homeowners along County Road 84 and center-pivot irrigation systems. A snip of the area is included below, but we could make additional maps, if you'd like. Note the numbers on the line are "milepost markers"-not pole locations. Dairyland has not finalized pole locations.



Regarding your remaining questions, the crossing of Great River Road has remained unchanged since we met. We are in the process of creating visualizations of the proposed crossing location with images of the pole design, as requested. The route now crosses the Canadian Pacific Railroad east of 161st Avenue and then parallels the railroad north-south on the east side. The route is 820 feet from the northbound portion of Great River Road at its closest point, and 0.4 miles at its furthest point. In between the route and the road are numerous wooded areas, a tree line, the railroad, a solar array, and various buildings and businesses.

Regarding the substation, Dairyland has advanced conversations with the landowner and will be pursuing purchase of an approximately 10-acre portion of the larger parcel that was initially reviewed, so you are correct, this map now shows that smaller area. I attached the same map from the Fact Sheet here so you can have it at a larger scale.

We'd be happy to meet with you again to discuss the project or provide additional information.

Take care –

Britta

Britta Bergland

612.746.3673 direct
612.220.9692 mobile
britta.bergland@merjent.com



1 Main Street SE, Suite 300
Minneapolis, MN 55414
612.746.3660
www.merjent.com

From: Chris Miller <chris@togpartners.com>

Sent: Wednesday, December 20, 2023 9:57 AM

To: 'Sage Williams' <Sage.Williams@DairylandPower.com>

Cc: Britta Bergland <britta.bergland@merjent.com>; Kristin Lenz <kristin.lenz@merjent.com>; 'John Anfinson' <janfinson@comcast.net>; Marni Karnowski <marni.karnowski@state.mn.us>; Kate Carlson <kcarlson@visitwinona.com>

Subject: EXTERNAL: RE: Dairyland Power - Wabasha Relocation Project in Wabasha County, MN

CAUTION: This email originated from outside of Merjent.

Hi Sage,

Thank you to Britta for the notice below and new mapping. A route modification was mentioned when MN Mississippi River Parkway Commission representatives met with you and others on December 8, and it's helpful to see it on a map. I've shared the new map with those MN-MRPC members (copied on this email), and we have a few comments and questions –

- Looking at the two maps, it appears that the new route will have more impact on the Great River Road.
- The new route will parallel the Great River Road for a stretch – what is the distance, how many poles will be along the Great River Road, and could we get images of what that might look like?
- Could you share more information on the landowner concerns that resulted in the change from the previous proposed route?
- On the new map, it looks like the area for the proposed Kellogg substation is now substantially smaller. Is that correct? It's helpful in comparing the overall changes from the previous map.

Let me know if you have questions for us, and/or would like to set up a meeting and I'll be happy to help coordinate.

Thanks again,

Chris Miller, Director
MN Mississippi River Parkway Commission
56 33rd Ave S, #283
St. Cloud, MN 56301
651-341-4196

From: Britta Bergland <britta.bergland@merjent.com>

Sent: Monday, December 18, 2023 2:55 PM

To: chris@togpartners.com

Cc: Sage Williams <Sage.Williams@DairylandPower.com>; Kristin Lenz <kristin.lenz@merjent.com>

Subject: Dairyland Power - Wabasha Relocation Project in Wabasha County, MN

Dear Chris Miller:

Dairyland Power Cooperative (Dairyland) is proposing to relocate approximately 13.3 miles of 161-kilovolt (kV) high voltage transmission line and construct a new substation in Wabasha County, Minnesota (the Wabasha Relocation Project, or the Project). The Project starts in Plainview Township, northeast of the Town of Plainview, and traverses northeast through Highland, Watopa, and Greenfield Townships, ending east of the City of Kellogg near the Mississippi River. More information on the Project, along with a Project map, is available in the attached fact sheet.

Dairyland plans to file a joint Certificate of Need and Route Permit application with the Minnesota Public Utilities Commission in March 2024. Dairyland would appreciate any input you may have on the Project. Please reach out to Sage Williams with Dairyland at 608-791-2993 or Sage.Williams@Dairylandpower.com with questions, written comments, or a request for a meeting.

Thank you –

Britta Bergland [on behalf of Sage Williams, Dairyland Power Cooperative]

Britta Bergland

612.746.3673 direct

612.220.9692 mobile

britta.bergland@merjent.com



1 Main Street SE, Suite 300

Minneapolis, MN 55414

612.746.3660

www.merjent.com

This e-mail message is intended to be received only by persons entitled to receive the confidential information it may contain. E-mail messages from Merjent, Inc. may contain information that is confidential and legally privileged. Please do not read, copy, forward, or store this message unless you are an intended recipient of it. If you have received this message in error, please forward it to the sender and delete it completely from your computer system.

This e-mail message is intended to be received only by persons entitled to receive the confidential information it may contain. E-mail messages from Merjent, Inc. may contain information that is confidential and legally privileged. Please do not read, copy, forward, or store this message unless you are an intended recipient of it. If you have received this message in error, please forward it to the sender and delete it completely from your computer system.