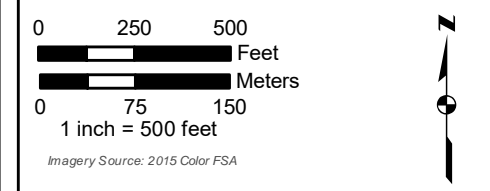


- Environmental Study Area
- Proposed Project Facilities**
- Proposed Turbine Location
- Proposed Turbine Pad Site
- Proposed Access Road
- Proposed Alternate Access
- Proposed Collection Line
- Proposed Facilities Boundary (OM Building and Laydown Yard)
- NWI - MNDNR Update
- Public Waters Inventory**
- Public Water Watercourse
- Public Water Basin/Wetland
- National Hydrography Dataset (NHD)**
- Perennial Stream
- Intermittent Stream
- Canal/Ditch
- Waterbody
- Hydric Soils (SSURGO)**
- Hydric (100%)
- Hydric (66 to 99%)
- Hydric (33 to 65%)
- Hydric (1 to 32%)
- Not Hydric (0%)

Appendix C
Bitter Root Wind Farm
Flying Cow Wind, LLC
 NWI, PWI, NHD and SSURGO Map
 Yellow Medicine County, Minnesota

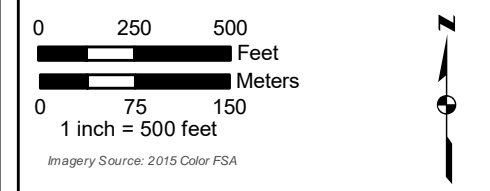
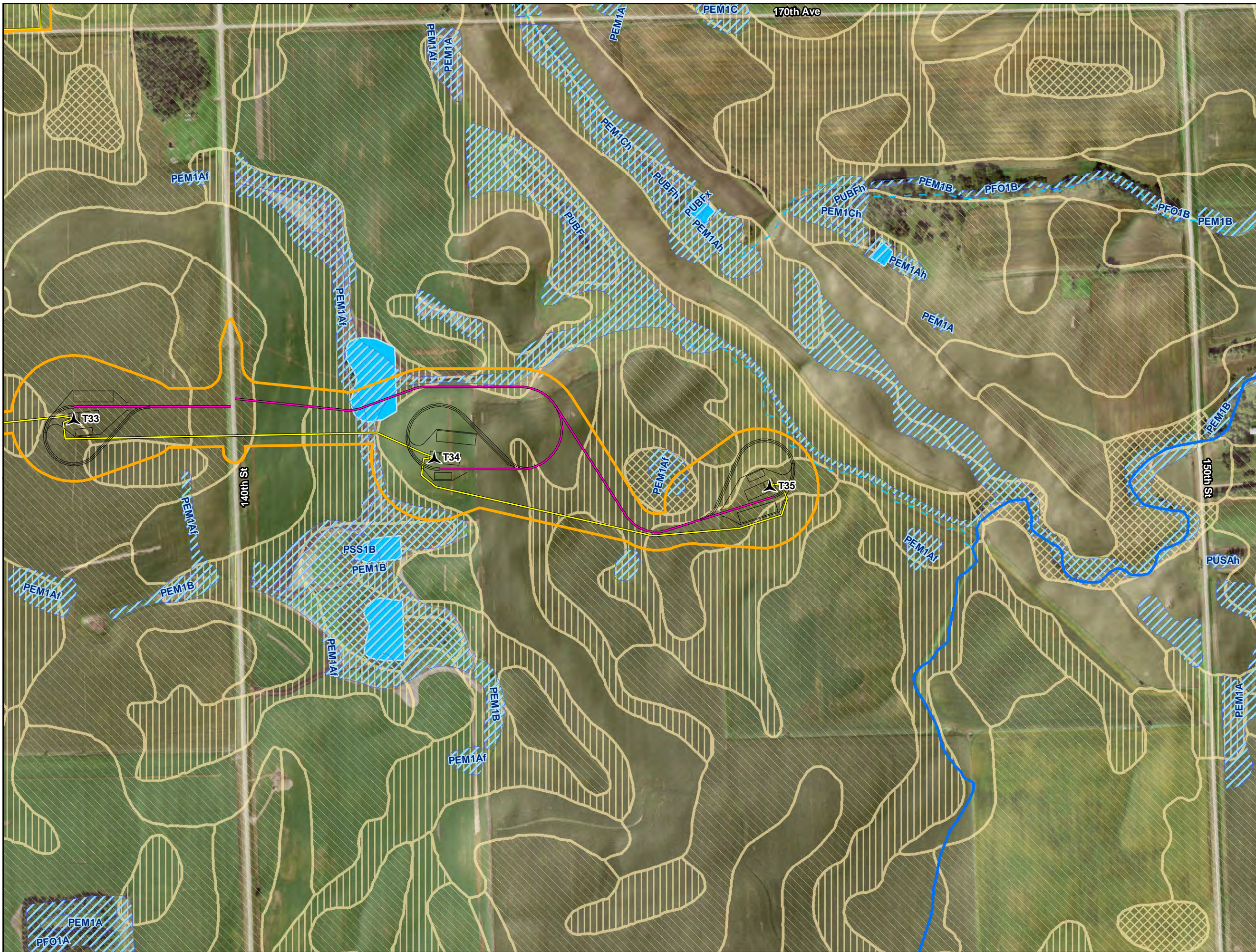
Date: (1/18/2017) Source: Z:\Clients\Q_1\RES_Americas\Bitter_Root\Final_Data\Wetland_Waterbodies\Reports\2017\NWI_Report_20171030\Appendix_C\NWI_Editor_Root_WWI_PWI_NHD_SSURGO_Features_Map.mxd



- Environmental Study Area
- Proposed Project Facilities**
- Proposed Turbine Location
- Proposed Turbine Pad Site
- Proposed Access Road
- Proposed Alternate Access
- Proposed Collection Line
- Proposed Facilities Boundary (OM Building and Laydown Yard)
- NWI - MNDNR Update
- Public Waters Inventory**
- Public Water Watercourse
- Public Water Basin/Wetland
- National Hydrography Dataset (NHD)**
- Perennial Stream
- Intermittent Stream
- Canal/Ditch
- Waterbody
- Hydric Soils (SSURGO)**
- Hydric (100%)
- Hydric (66 to 99%)
- Hydric (33 to 65%)
- Hydric (1 to 32%)
- Not Hydric (0%)

Appendix C
Bitter Root Wind Farm
Flying Cow Wind, LLC
 NWI, PWI, NHD and SSURGO Map
 Yellow Medicine County, Minnesota

Date: 1/18/2017 Source: Z:\Clients\Q_TIREES_Americas\Bitter_Root\Field_Data\Wetland_Waterbodies\Reports\2017\NWI_Report_20171030\Appendix_C\NWI_Bitter_Root\NWI_PWL_NHD_SSURGO_Features_Map.mxd

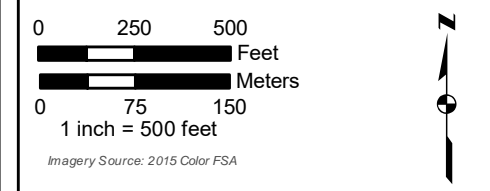


- Environmental Study Area
- Proposed Project Facilities**
- Proposed Turbine Location
- Proposed Turbine Pad Site
- Proposed Access Road
- Proposed Alternate Access
- Proposed Collection Line
- Proposed Facilities Boundary (OM Building and Laydown Yard)
- NWI - MNDNR Update
- Public Waters Inventory**
- Public Water Watercourse
- Public Water Basin/Wetland
- National Hydrography Dataset (NHD)**
- Perennial Stream
- Intermittent Stream
- Canal/Ditch
- Waterbody
- Hydric Soils (SSURGO)**
- Hydric (100%)
- Hydric (66 to 99%)
- Hydric (33 to 65%)
- Hydric (1 to 32%)
- Not Hydric (0%)

Appendix C
Bitter Root Wind Farm
Flying Cow Wind, LLC
 NWI, PWI, NHD and SSURGO Map
 Yellow Medicine County, Minnesota

Date: (1/18/2017) Source: Z:\Clients\Q_TRES_Americas\Bitter_Root\Field_Data\Wetland_Waterbodies\Reports\2017\NWI_Report_20171030\Appendix_C_NWI_Editor_Root_WWI_PWI_NHD_SSURGO_Features_Map.mxd

Appendix D
Field and Desktop Delineation
Wetland and Waterbody Map

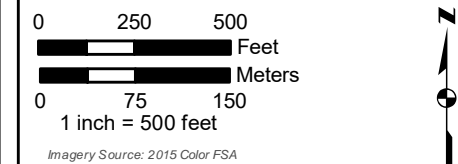


- Environmental Study Area
 - Proposed Project Facilities**
 - Proposed Turbine Location
 - Proposed Turbine Pad Site
 - Proposed Access Road
 - Proposed Alternate Access
 - Proposed Collection Line
 - Proposed Facilities Boundary (OM Building and Laydown Yard)
 - ▲ Upland Sample Points
 - Wetland Sample Points
 - Desktop Waterbody
 - Field Delineated Waterbody
 - Wetland Type**
 - PFO - NWI
 - PEM - Desktop Delineated
 - PEM - Field Delineated
 - PSS - Field Delineated
- Wetland/Waterbody Label:**
w-114n46w8-w01
- Wetland Sample Point Label:**
w-114n46w5-u01a
- Upland Sample Point:**
n-144n46w23-u01

Appendix D
Bitter Root Wind Farm
Flying Cow Wind, LLC
Field Features Map
Yellow Medicine County, Minnesota



Date: (1/18/2017) Source: Z:\Clients\Q_1\RES_Americas\Bitter_Root\Field_Data\Wetland_Waterbodies\Reports\2017\WW_Report_20171030\Appendix_D\WW_Bitter_Root_WW_Field_Features_Map.mxd

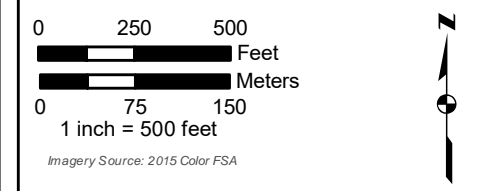


- Environmental Study Area
 - Proposed Project Facilities**
 - Proposed Turbine Location
 - Proposed Turbine Pad Site
 - Proposed Access Road
 - Proposed Alternate Access
 - Proposed Collection Line
 - Proposed Facilities Boundary (OM Building and Laydown Yard)
 - Upland Sample Points
 - Wetland Sample Points
 - Desktop Waterbody
 - Field Delineated Waterbody
 - Wetland Type**
 - PFO - NWI
 - PEM - Desktop Delineated
 - PEM - Field Delineated
 - PSS - Field Delineated
- Wetland/Waterbody Label:**
w-114n46w8-w01
- Wetland Sample Point Label:**
w-114n46w5-u01a
- Upland Sample Point:**
n-144n46w23-u01

Appendix D
Bitter Root Wind Farm
Flying Cow Wind, LLC
Field Features Map
Yellow Medicine County, Minnesota

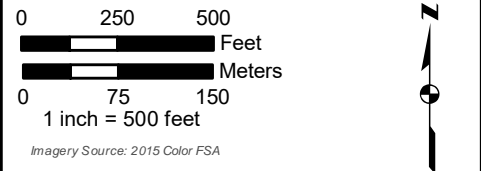


Date: (1/18/2017) Source: Z:\Clients\Q_TRES_Americas\Bitter_Root\Field_Data\Wetland_Waterbodies\Reports\2017\NW\Report_20171030\Appendix_D_MN_Bitter_Root_VWV_Field_Features_Map.mxd



- Environmental Study Area
 - Proposed Project Facilities**
 - Proposed Turbine Location
 - Proposed Turbine Pad Site
 - Proposed Access Road
 - Proposed Alternate Access
 - Proposed Collection Line
 - Proposed Facilities Boundary (OM Building and Laydown Yard)
 - Upland Sample Points
 - Wetland Sample Points
 - Desktop Waterbody
 - Field Delineated Waterbody
 - Wetland Type**
 - PFO - NWI
 - PEM - Desktop Delineated
 - PEM - Field Delineated
 - PSS - Field Delineated
- Wetland/Waterbody Label:**
w-114n46w8-w01
- Wetland Sample Point Label:**
w-114n46w5-u01a
- Upland Sample Point:**
n-144n46w23-u01

Date: (1/18/2017) Source: Z:\Clients\Q_1\RES_Americas\Bitter_Root\Field_Data\Wetland_Waterbodies\Reports\2017\WWW_Report_20171030\Appendix_D_Min_Enter_Root_WW_Field_Features_Map.mxd

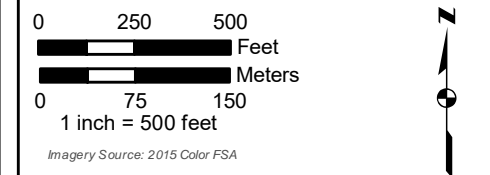
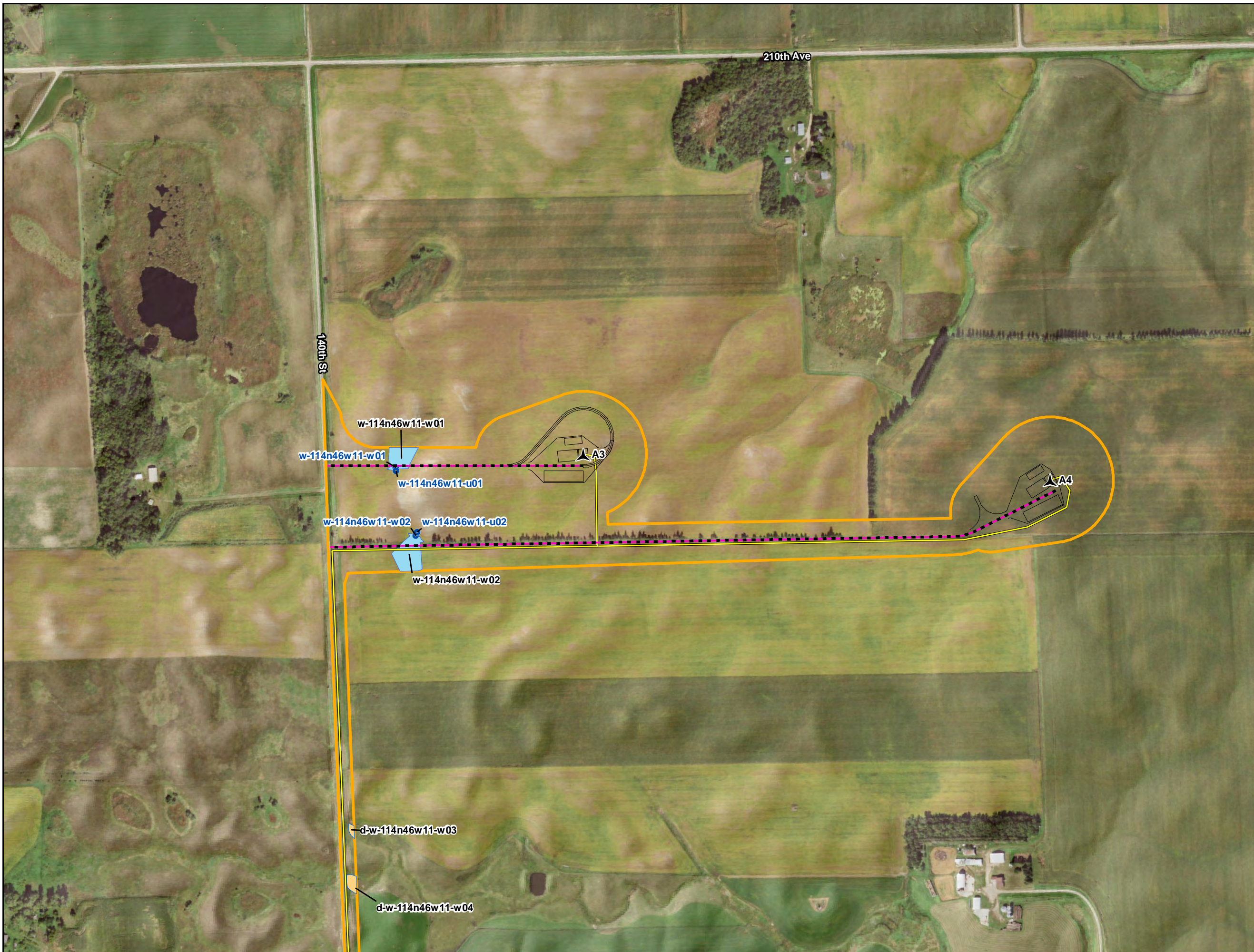


- Environmental Study Area
 - Proposed Project Facilities**
 - Proposed Turbine Location
 - Proposed Turbine Pad Site
 - Proposed Access Road
 - Proposed Alternate Access
 - Proposed Collection Line
 - Proposed Facilities Boundary (OM Building and Laydown Yard)
 - Upland Sample Points
 - Wetland Sample Points
 - Desktop Waterbody
 - Field Delineated Waterbody
 - Wetland Type**
 - PFO - NWI
 - PEM - Desktop Delineated
 - PEM - Field Delineated
 - PSS - Field Delineated
- Wetland/Waterbody Label:**
w-114n46w8-w01
- Wetland Sample Point Label:**
w-114n46w5-u01a
- Upland Sample Point:**
n-144n46w23-u01

Appendix D
Bitter Root Wind Farm
Flying Cow Wind, LLC
Field Features Map
Yellow Medicine County, Minnesota



Date: (1/18/2017) Source: Z:\Clients\Q_TRES_Americas\Bitter_Root\Field_Data\Wetland_Waterbodies\Reports\2017\WW_Report_20171030\Appendix_D_Min_Bitter_Root_WW_Field_Features_Map.mxd

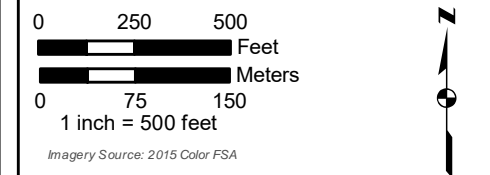
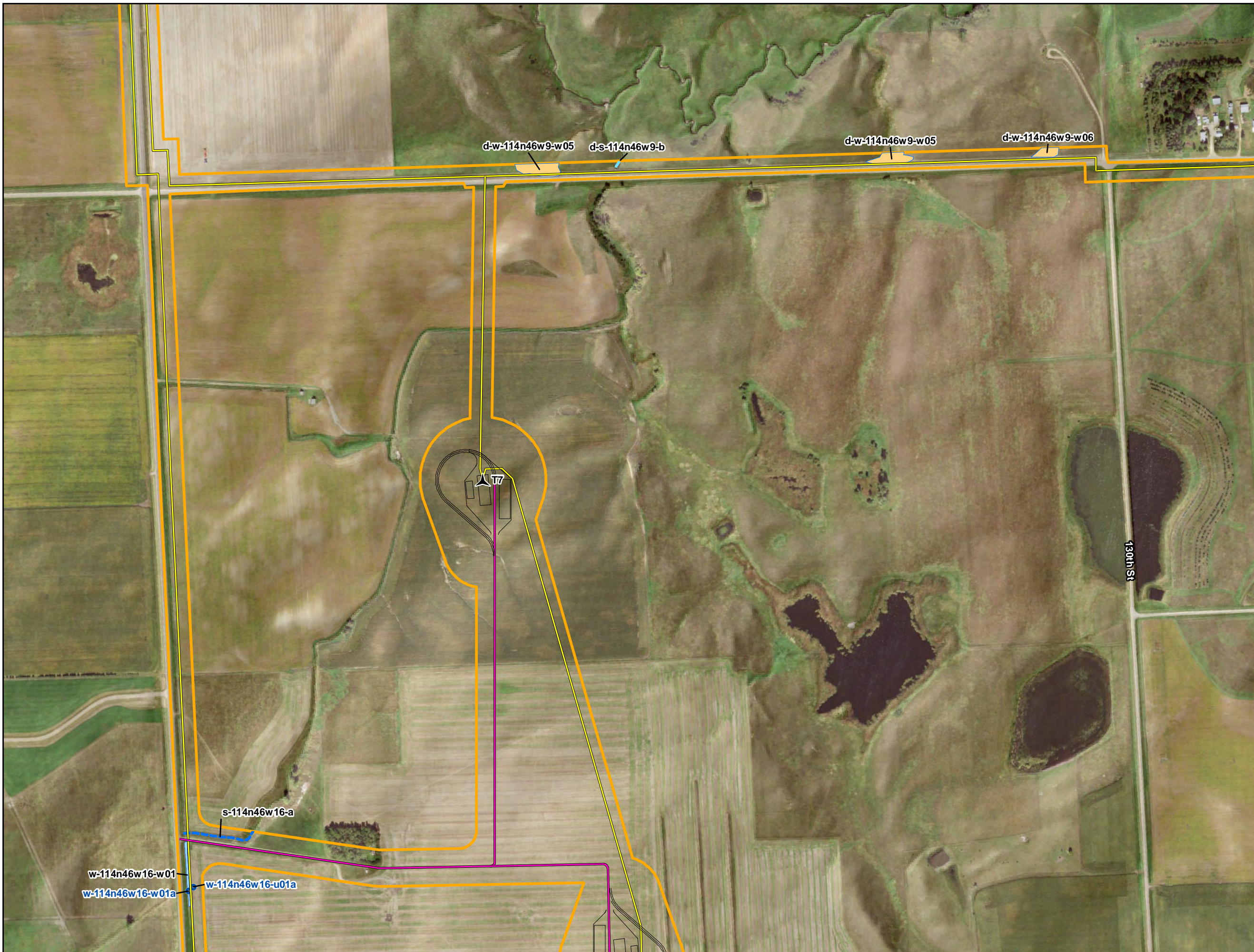


- Environmental Study Area
 - Proposed Project Facilities**
 - Proposed Turbine Location
 - Proposed Turbine Pad Site
 - Proposed Access Road
 - Proposed Alternate Access
 - Proposed Collection Line
 - Proposed Facilities Boundary (OM Building and Laydown Yard)
 - Upland Sample Points
 - Wetland Sample Points
 - Desktop Waterbody
 - Field Delineated Waterbody
 - Wetland Type**
 - PFO - NWI
 - PEM - Desktop Delineated
 - PEM - Field Delineated
 - PSS - Field Delineated
- Wetland/Waterbody Label:**
w-114n46w8-w01
- Wetland Sample Point Label:**
w-114n46w5-u01a
- Upland Sample Point:**
n-144n46w23-u01

Appendix D
Bitter Root Wind Farm
Flying Cow Wind, LLC
Field Features Map
Yellow Medicine County, Minnesota



Date: (1/18/2017) Source: Z:\Clients\Q_1\FRES_Americas\Bitter_Root\Field_Data\Wetland_Waterbodies\Reports\2017\WWW_Report_20171030\Appendix_D_Min_Bitter_Root_WW_Field_Features_Map.mxd

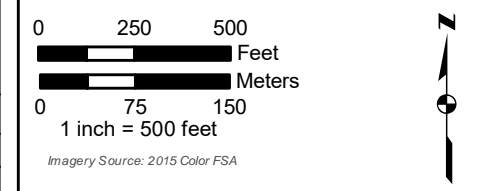


- Environmental Study Area
 - Proposed Project Facilities**
 - Proposed Turbine Location
 - Proposed Turbine Pad Site
 - Proposed Access Road
 - Proposed Alternate Access
 - Proposed Collection Line
 - Proposed Facilities Boundary (OM Building and Laydown Yard)
 - Upland Sample Points
 - Wetland Sample Points
 - Desktop Waterbody
 - Field Delineated Waterbody
 - Wetland Type**
 - PFO - NWI
 - PEM - Desktop Delineated
 - PEM - Field Delineated
 - PSS - Field Delineated
- Wetland/Waterbody Label:**
w-114n46w8-w01
- Wetland Sample Point Label:**
w-114n46w5-u01a
- Upland Sample Point:**
n-144n46w23-u01

Appendix D
Bitter Root Wind Farm
Flying Cow Wind, LLC
Field Features Map
Yellow Medicine County, Minnesota



Date: (1/18/2017) Source: Z:\Clients\Q_1\RES_AMERICAS\Bitter_Root\Field\Wetland_Waterbodies\Reports\2017\WWW_Report\20171030\Appendix_D_Min_Bitter_Root_WW_Field_Features_Map.mxd

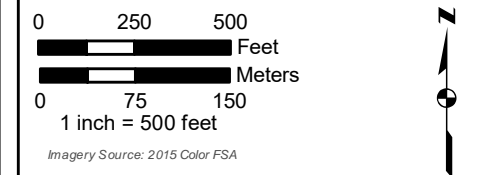
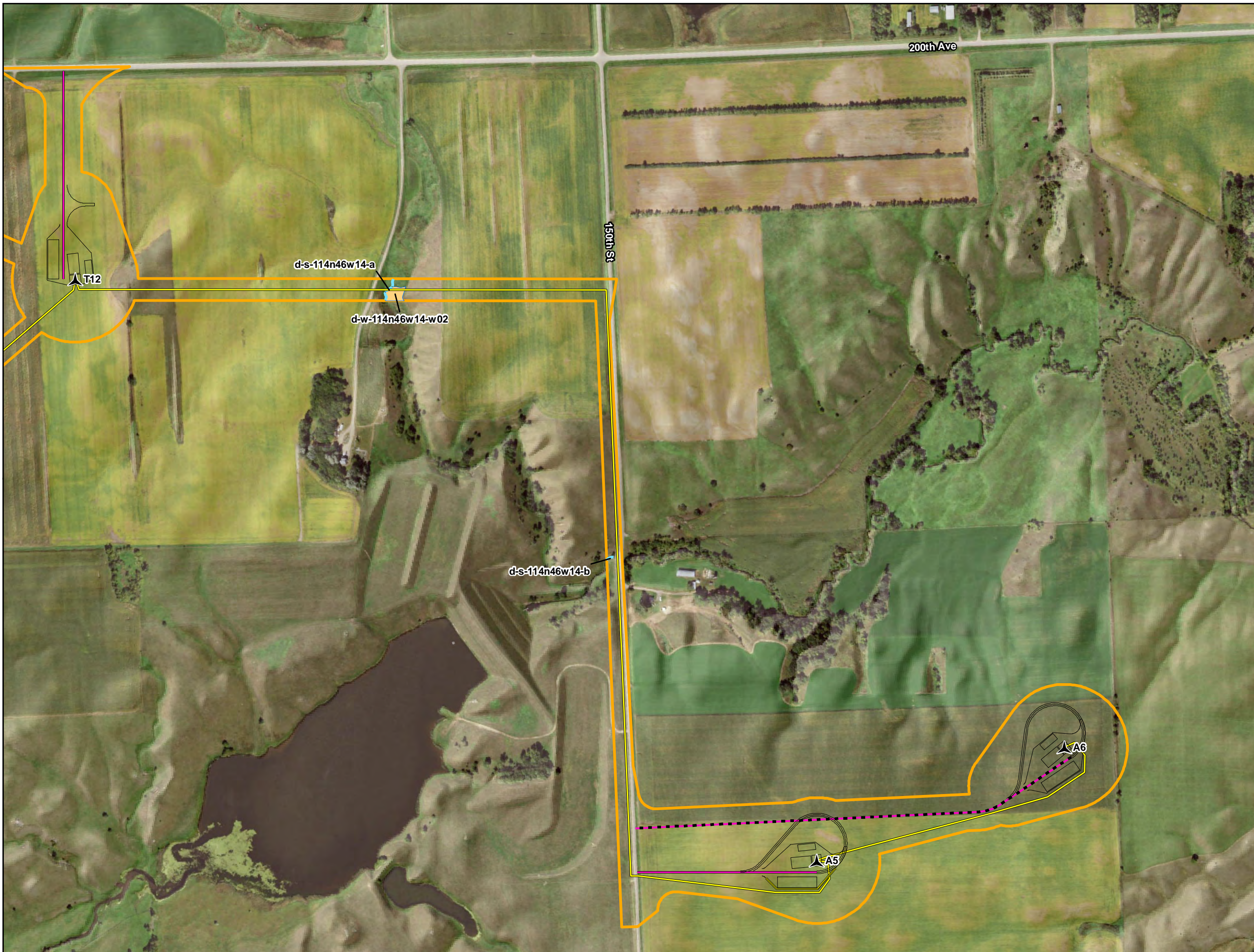


- Environmental Study Area
 - Proposed Project Facilities**
 - Proposed Turbine Location
 - Proposed Turbine Pad Site
 - Proposed Access Road
 - Proposed Alternate Access
 - Proposed Collection Line
 - Proposed Facilities Boundary (OM Building and Laydown Yard)
 - Upland Sample Points
 - Wetland Sample Points
 - Desktop Waterbody
 - Field Delineated Waterbody
 - Wetland Type**
 - PFO - NWI
 - PEM - Desktop Delineated
 - PEM - Field Delineated
 - PSS - Field Delineated
- Wetland/Waterbody Label:**
w-114n46w8-w01
- Wetland Sample Point Label:**
w-114n46w5-u01a
- Upland Sample Point:**
n-144n46w23-u01

Appendix D
Bitter Root Wind Farm
Flying Cow Wind, LLC
Field Features Map
Yellow Medicine County, Minnesota



Date: (1/18/2017) Source: Z:\Clients\Q_TRES_Americas\Bitter_Root\Field_Data\Wetland_Waterbodies\Reports\2017\WW_Report\20171030\Appendix_D\WW_Bitter_Root_WW_Field_Features_Map.mxd

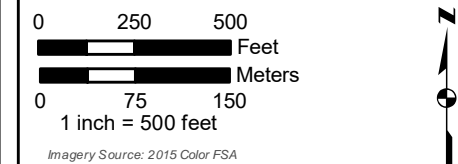


- Environmental Study Area
 - Proposed Project Facilities**
 - Proposed Turbine Location
 - Proposed Turbine Pad Site
 - Proposed Access Road
 - Proposed Alternate Access
 - Proposed Collection Line
 - Proposed Facilities Boundary (OM Building and Laydown Yard)
 - Upland Sample Points
 - Wetland Sample Points
 - Desktop Waterbody
 - Field Delineated Waterbody
 - Wetland Type**
 - PFO - NWI
 - PEM - Desktop Delineated
 - PEM - Field Delineated
 - PSS - Field Delineated
- Wetland/Waterbody Label:**
w-114n46w8-w01
- Wetland Sample Point Label:**
w-114n46w5-u01a
- Upland Sample Point:**
n-144n46w23-u01

Appendix D
Bitter Root Wind Farm
Flying Cow Wind, LLC
Field Features Map
Yellow Medicine County, Minnesota



Date: (1/18/2017) Source: Z:\Clients\Q_1\FRES_Americas\Bitter_Root\Field_Data\Wetland_Waterbodies\Reports\2017\WW_Rep\20171030\Appendix_D_Min_Bitter_Root_WW_Field_Features_Map.mxd



- Environmental Study Area
- Proposed Project Facilities**
- Proposed Turbine Location
- Proposed Turbine Pad Site
- Proposed Access Road
- Proposed Alternate Access
- Proposed Collection Line
- Proposed Facilities Boundary (OM Building and Laydown Yard)
- Upland Sample Points
- Wetland Sample Points
- Desktop Waterbody
- Field Delineated Waterbody
- Wetland Type**
- PFO - NWI
- PEM - Desktop Delineated
- PEM - Field Delineated
- PSS - Field Delineated

Wetland/Waterbody Label:

w-114n46w8-w01

Wetland Sample Point Label:

w-114n46w5-u01a

Upland Sample Point:

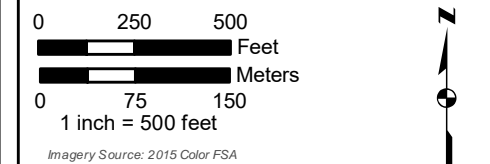
n-144n46w23-u01

Appendix D
Bitter Root Wind Farm
Flying Cow Wind, LLC
Field Features Map
Yellow Medicine County, Minnesota

Page 9 of 19



Date: (1/18/2017) Source: Z:\Clients\Q_1\RES_Americas\Bitter_Root\Field\Wetland_Data\Wetland_Waterbodies\Reports\2017\WW_Reports\2017\030\Appendix_D\WW_Bitter_Root_WW_Field_Features_Map.mxd



- Environmental Study Area
- Proposed Project Facilities**
- Proposed Turbine Location
- Proposed Turbine Pad Site
- Proposed Access Road
- Proposed Alternate Access
- Proposed Collection Line
- Proposed Facilities Boundary (OM Building and Laydown Yard)
- Upland Sample Points
- Wetland Sample Points
- Desktop Waterbody
- Field Delineated Waterbody
- Wetland Type**
- PFO - NWI
- PEM - Desktop Delineated
- PEM - Field Delineated
- PSS - Field Delineated

Wetland/Waterbody Label:

w-114n46w8-w01

Wetland Sample Point Label:

w-114n46w5-u01a

Upland Sample Point:

n-144n46w23-u01

Appendix D
Bitter Root Wind Farm
Flying Cow Wind, LLC
Field Features Map
Yellow Medicine County, Minnesota

Page 10 of 19



For Environmental Review Purposes Only

Date: (1/18/2017) Source: Z:\Clients\Q_TILES_Americas\Bitter_Root\Field_Data\Wetland_Waterbodies\Reports\2017\WW_Report_20171030\Appendix_D\WW_Bitter_Root_WW_Field_Features_Map.mxd