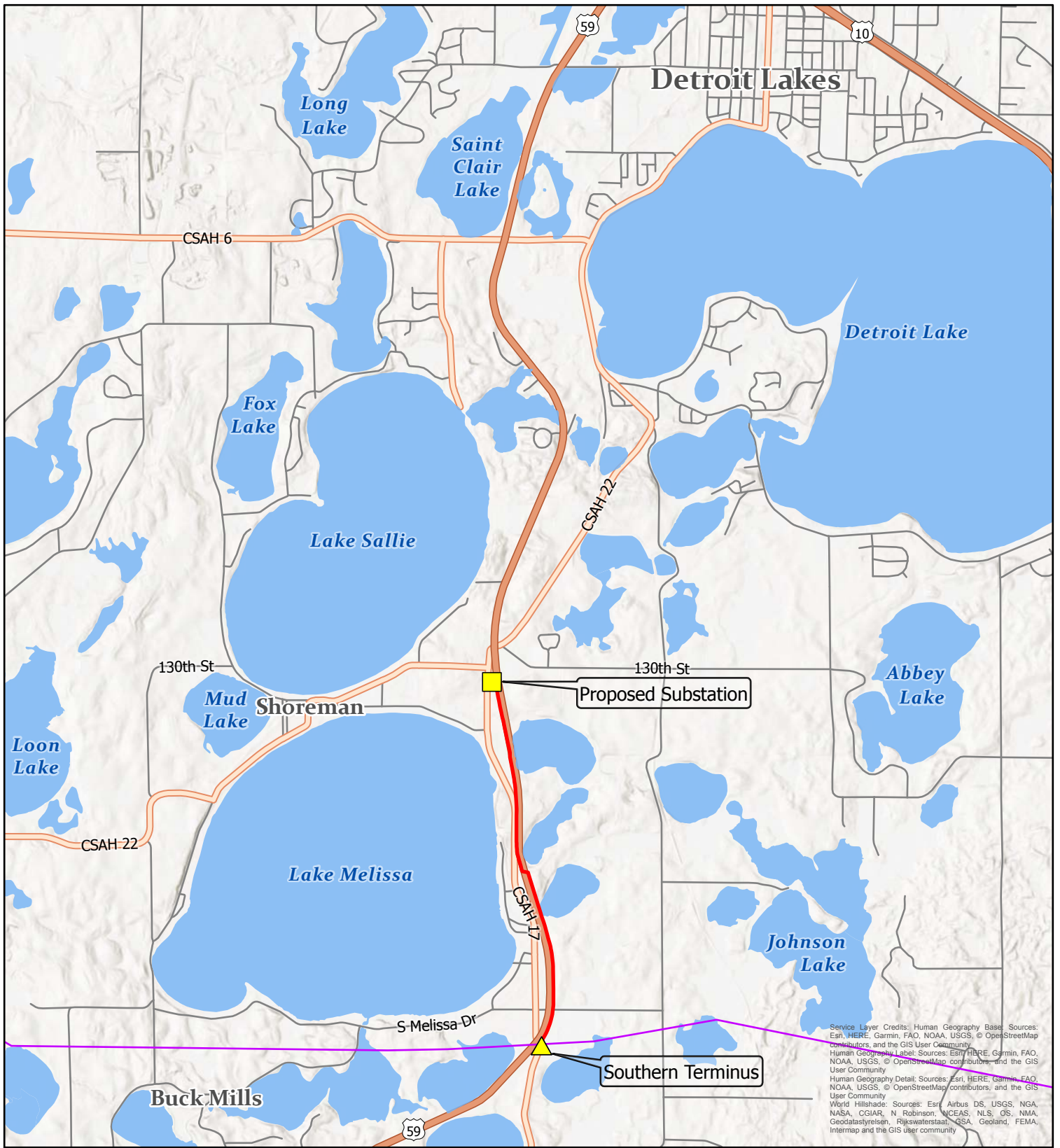


Appendix A Maps



Service Layer Credits: Human Geography Base: Sources: Esri, HERE, Garmin, FAO, NOAA, USGS, © OpenStreetMap contributors, and the GIS User Community
 Human Geography Label: Sources: Esri, HERE, Garmin, FAO, NOAA, USGS, © OpenStreetMap contributors, and the GIS User Community
 Human Geography Detail: Sources: Esri, HERE, Garmin, FAO, NOAA, USGS, © OpenStreetMap contributors, and the GIS User Community
 World Hillshade: Sources: Esri, Airbus DS, USGS, NGA, NASA, CGIAR, N Robinson, NCEAS, NLS, OS, NMA, Geodatasystem, Rijkswaterstaat, CS, Geoland, FEMA, Intermap and the GIS user community

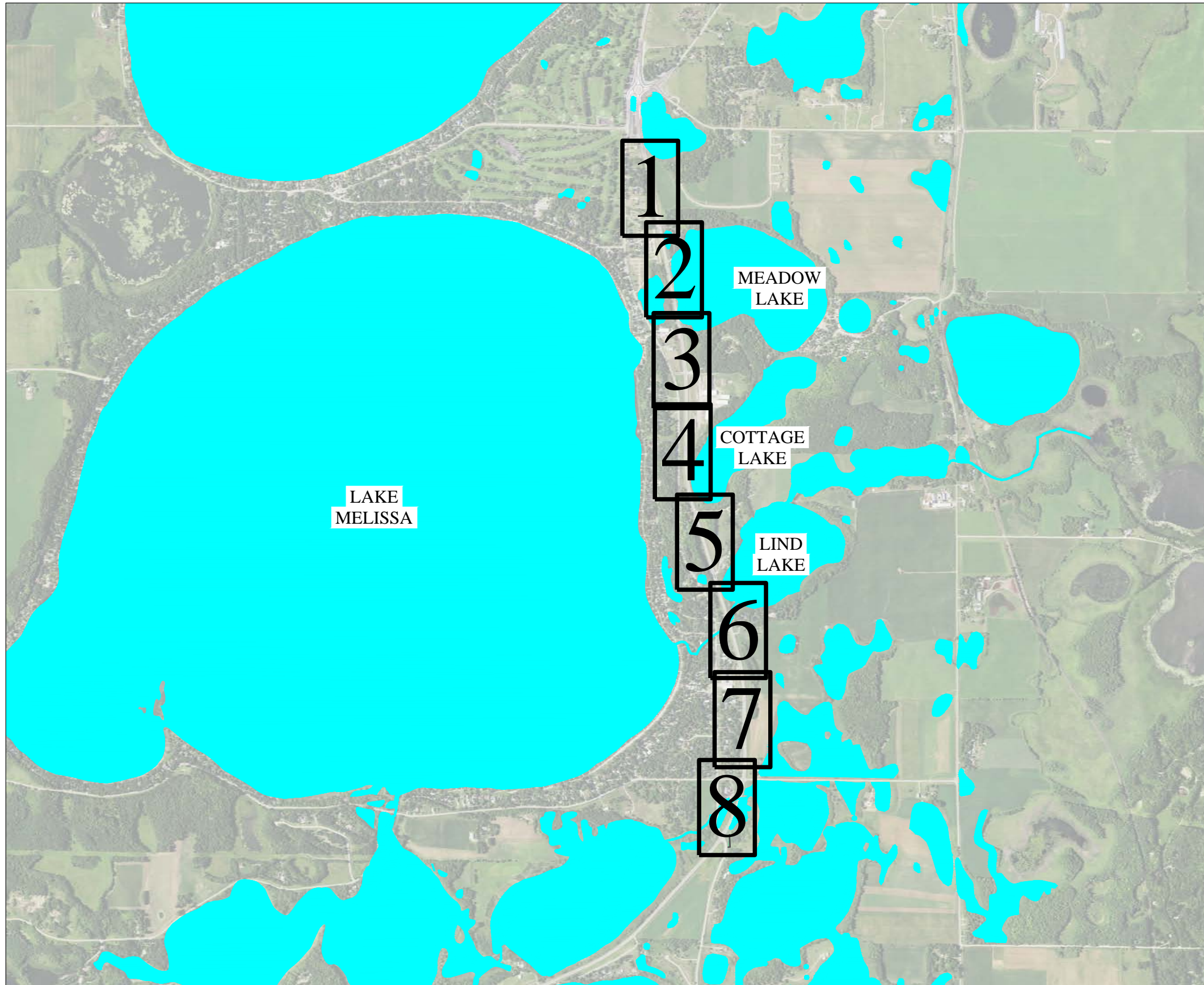
Project Location













- Proposed 115 kV Transmission Line
- Proposed Substation
- ▲ Southern Terminus
- Existing 115 kV Transmission Line



1:50,000

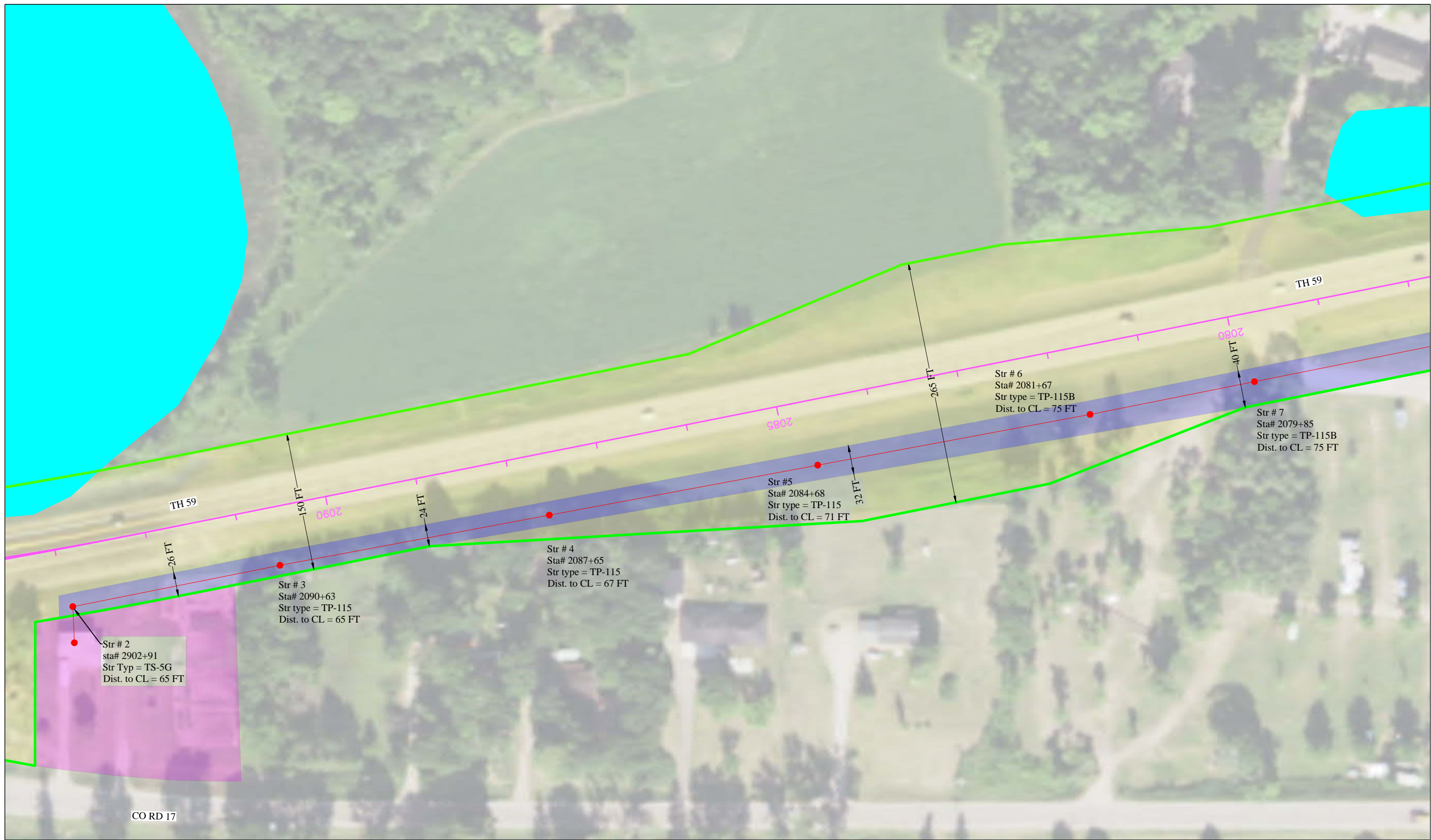


MAP LEGEND

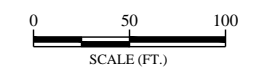
-  MNDOT Right-of-way
-  Proposed DLPU 115 kV Transmission Line
-  Existing 11k kV Transmission Line (owned by Great River Energy)
-  Highway Centerline (CL)
-  Proposed Transmission Line Structure
-  Anticipated Route Width (Existing MNDOT Right-of-way)
-  Portion of MNDOT Right-of-way occupied by DLPU HVTL
-  Proposed 115 kV Substation
-  Proposed permanent DLPU Easement
-  NWI Locations

NOTES

1. Dimensions are approximate and based on data provided by MNDOT. Final dimensions to be determined with final design and topographical survey.



SEE SHEET 2



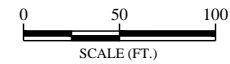
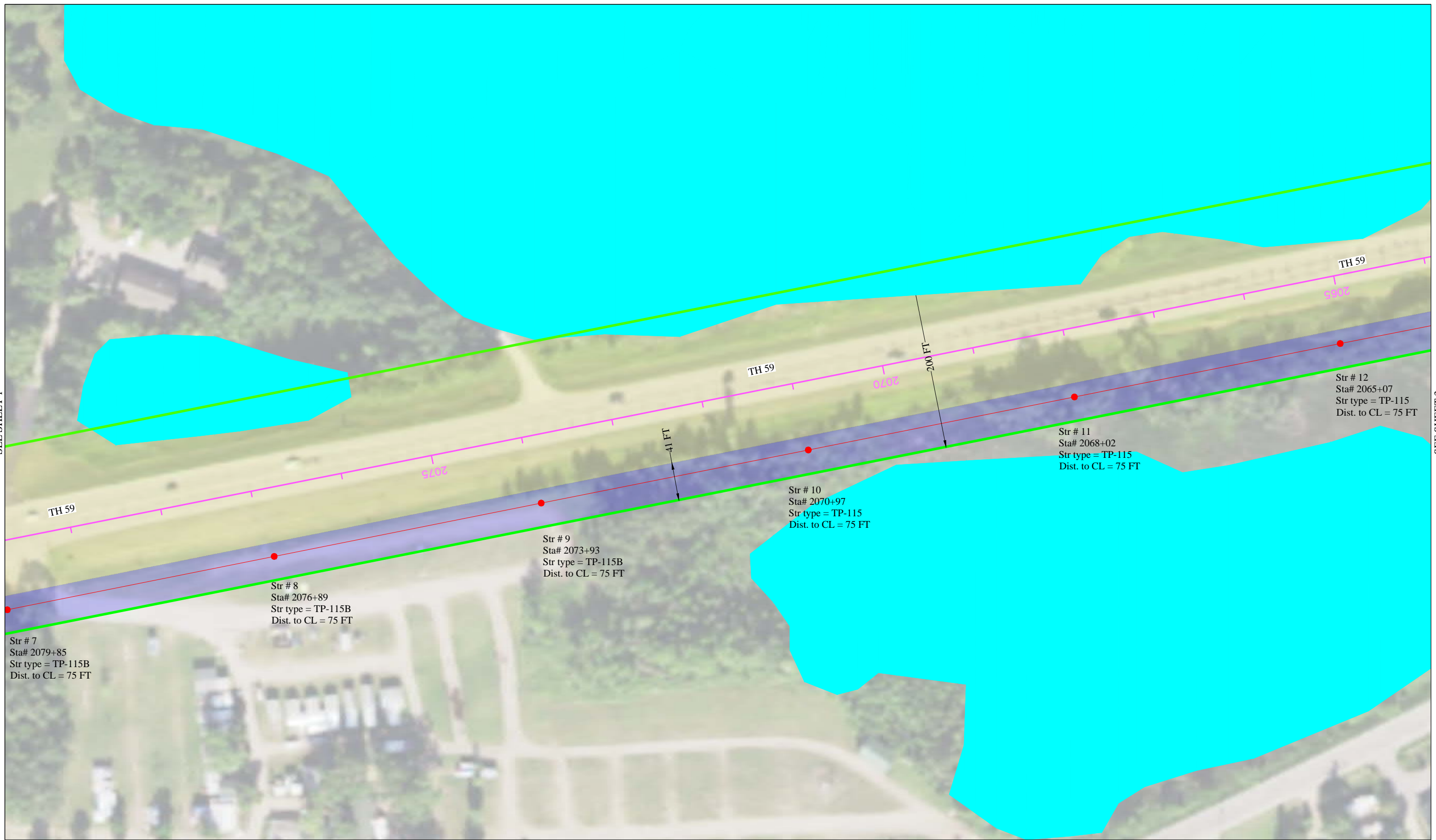
DETROIT LAKES PUBLIC UTILITIES
DETROIT LAKES, MN

MAP 2
PROPOSED 115 kV TRANSMISSION LINE
CORRIDOR RIGHT-OF-WAY MAP

S
H
E
E
T
1 OF 8

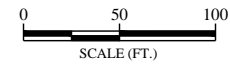
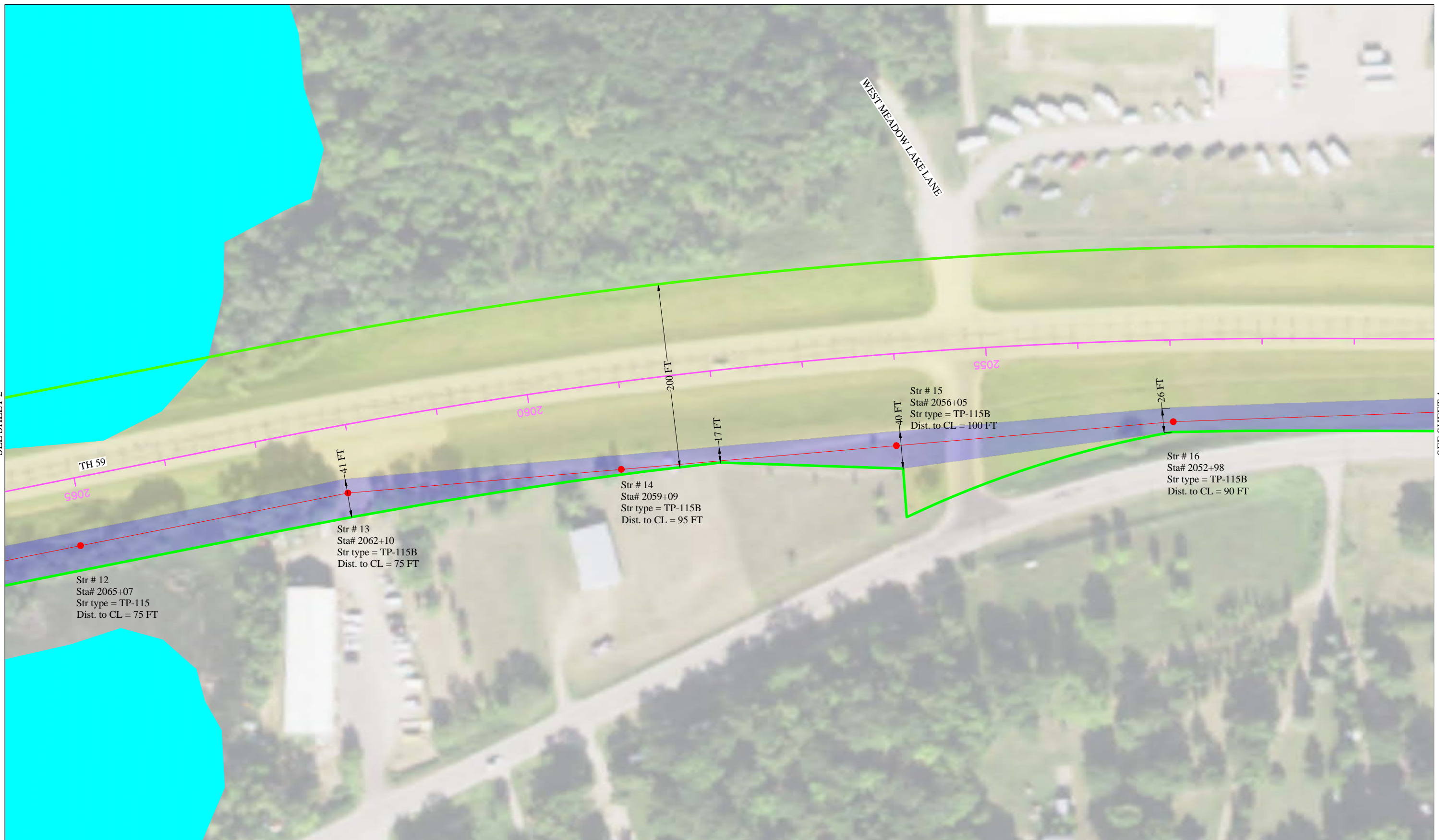
SEE SHEET 1

SEE SHEET 3



SEE SHEET 2

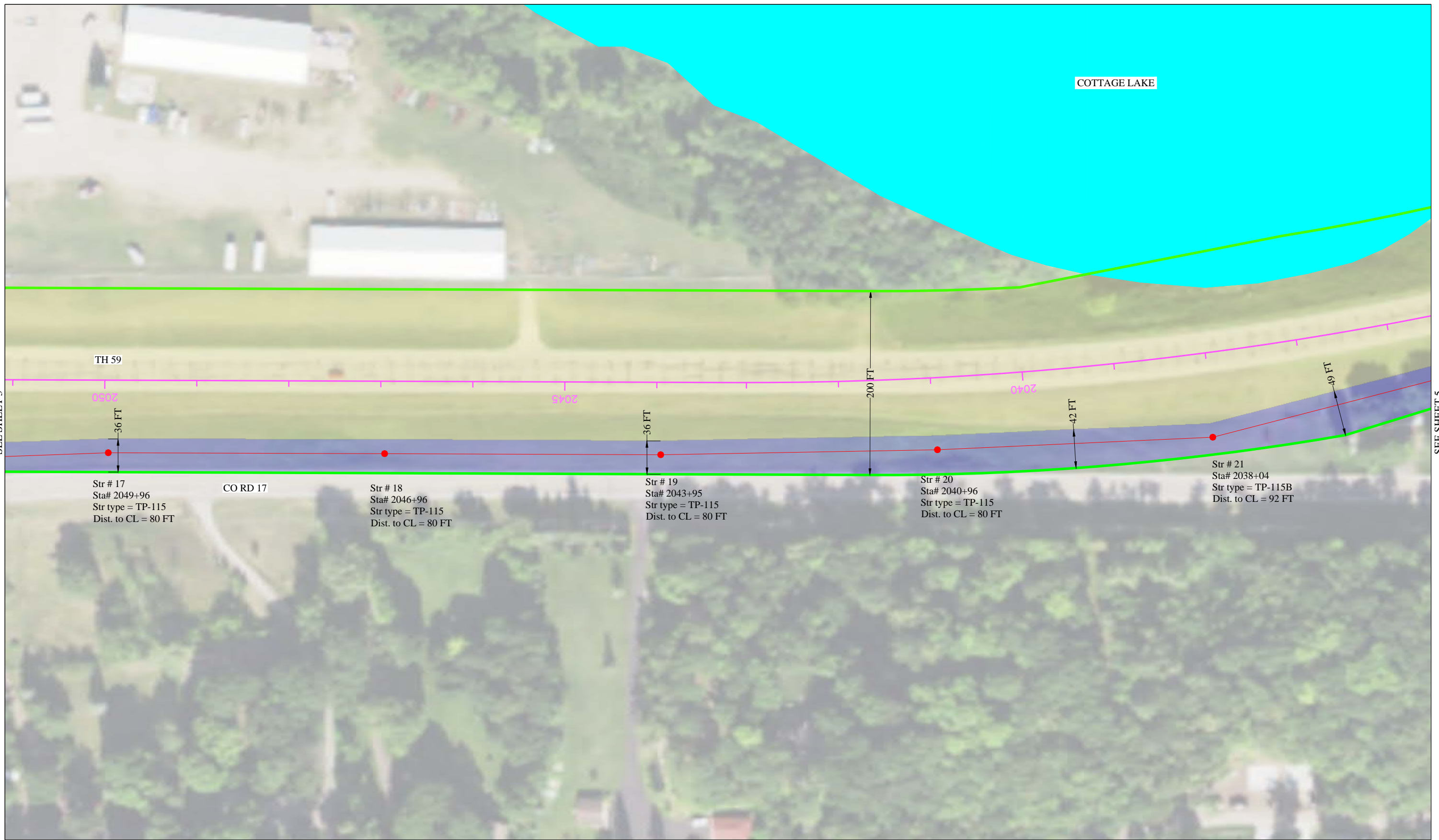
SEE SHEET 4



DETROIT LAKES PUBLIC UTILITIES
DETROIT LAKES, MN

MAP 2
PROPOSED 115 kV TRANSMISSION LINE
CORRIDOR RIGHT-OF-WAY MAP

S
H
E
E
T
3 OF 8



TH 59

COTTAGE LAKE

Str # 17
 Sta# 2049+96
 Str type = TP-115
 Dist. to CL = 80 FT

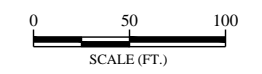
CO RD 17

Str # 18
 Sta# 2046+96
 Str type = TP-115
 Dist. to CL = 80 FT

Str # 19
 Sta# 2043+95
 Str type = TP-115
 Dist. to CL = 80 FT

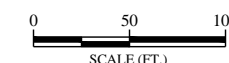
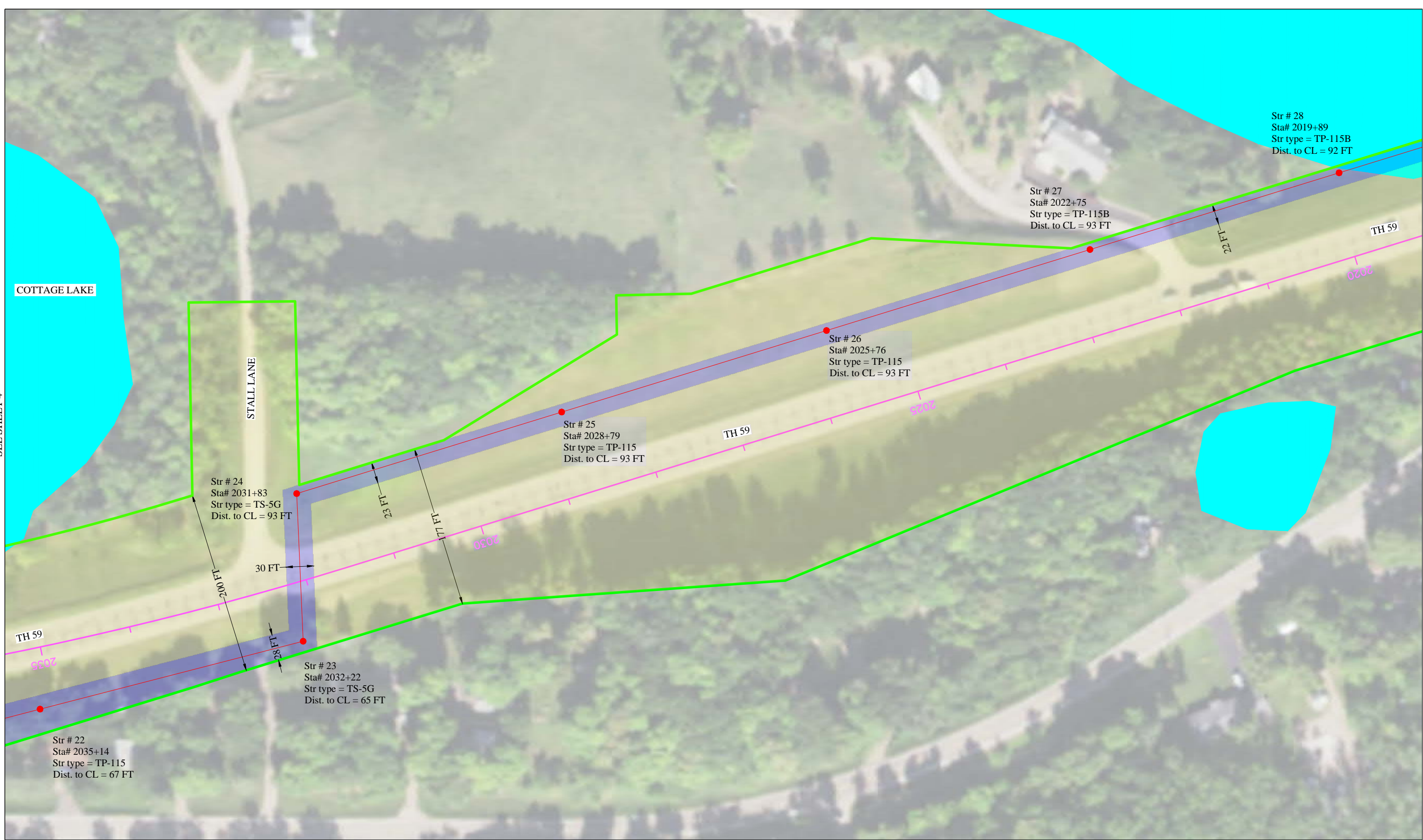
Str # 20
 Sta# 2040+96
 Str type = TP-115
 Dist. to CL = 80 FT

Str # 21
 Sta# 2038+04
 Str type = TP-115B
 Dist. to CL = 92 FT



SEE SHEET 3

SEE SHEET 5

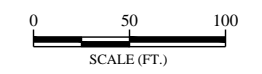
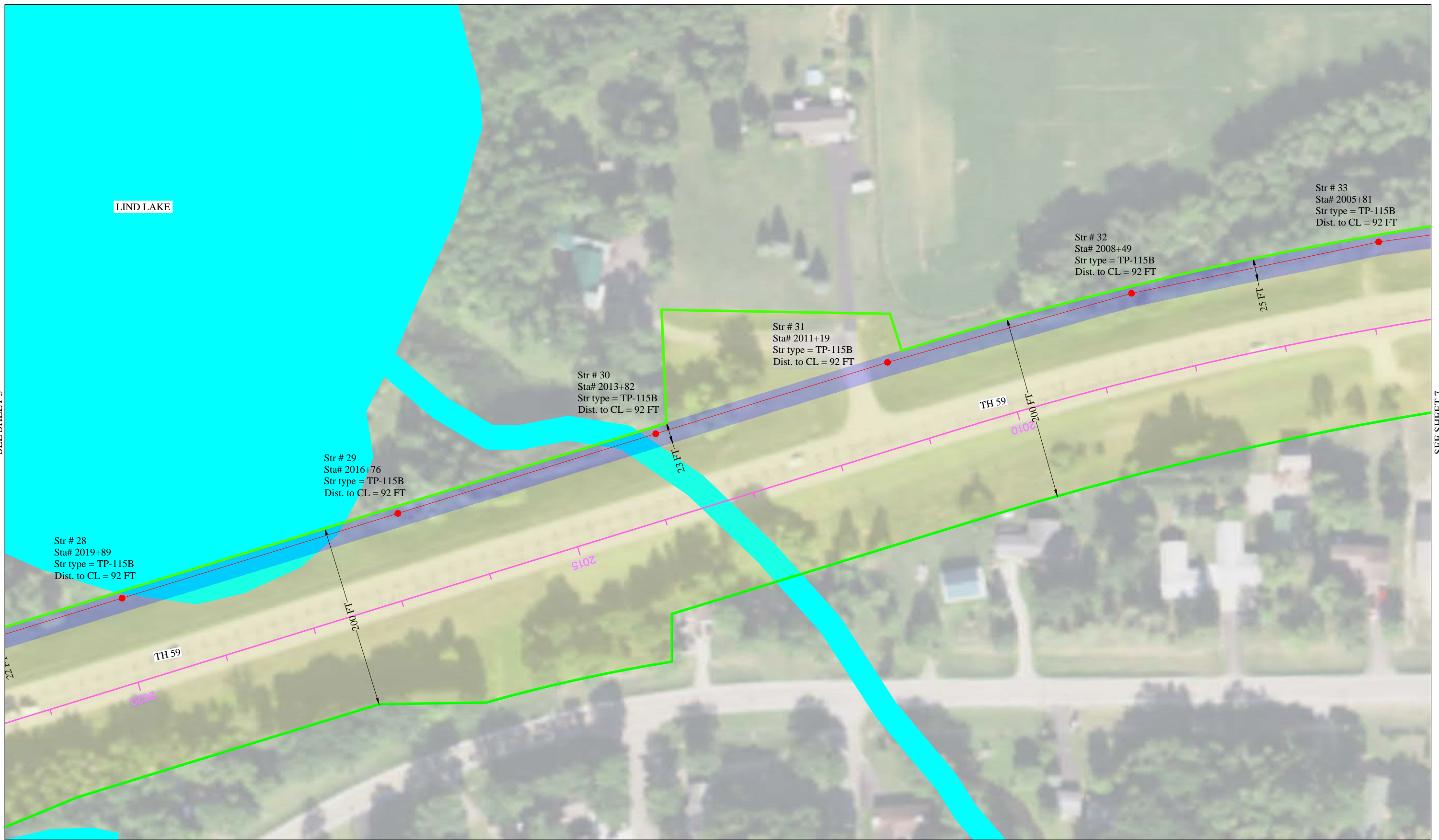


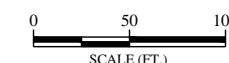
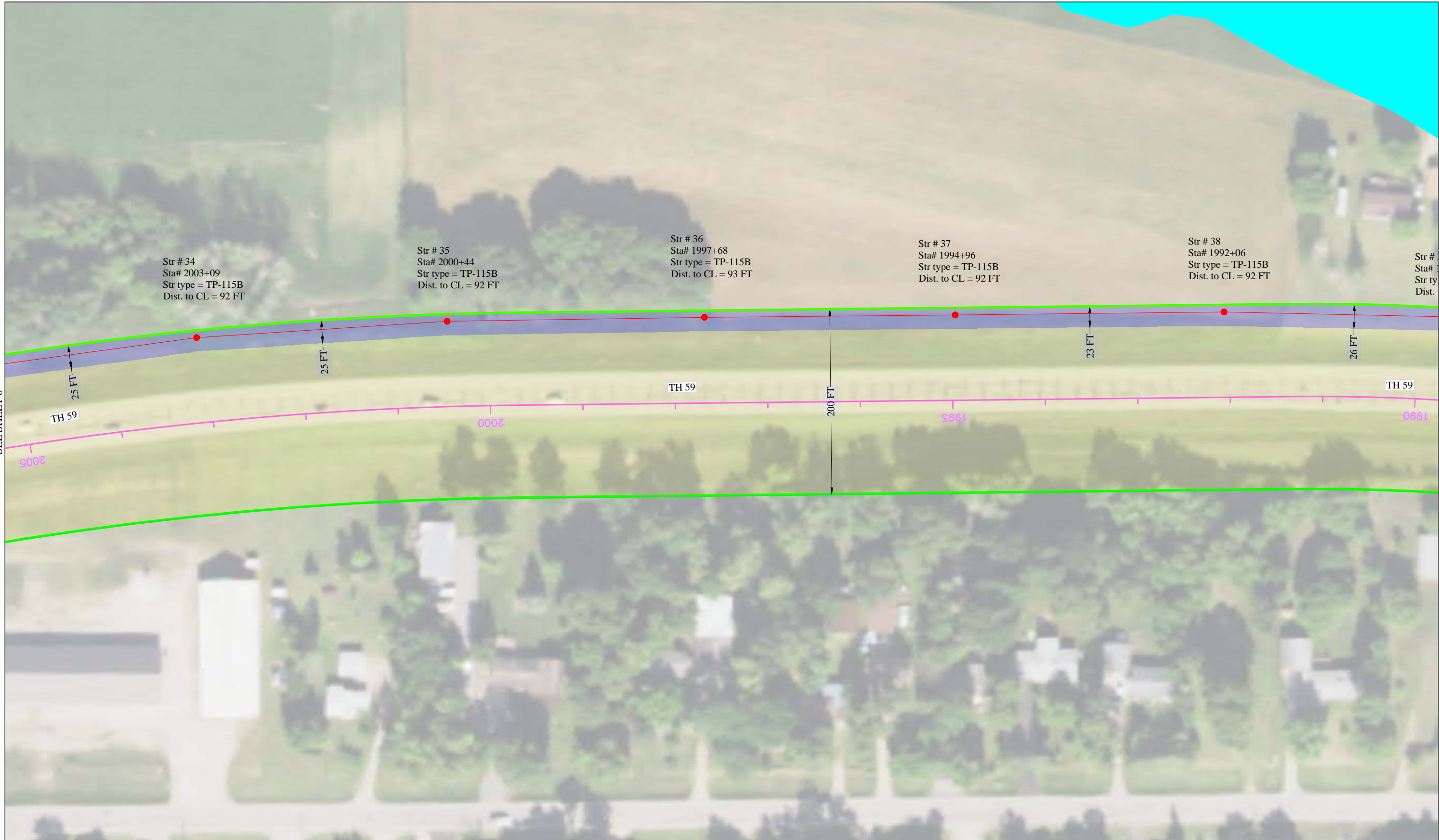
DETROIT LAKES PUBLIC UTILITIES
DETROIT LAKES, MN

MAP 2
PROPOSED 115 kV TRANSMISSION LINE
CORRIDOR RIGHT-OF-WAY MAP

S
H
E
E
T
5 OF 8

SEE SHEET 5



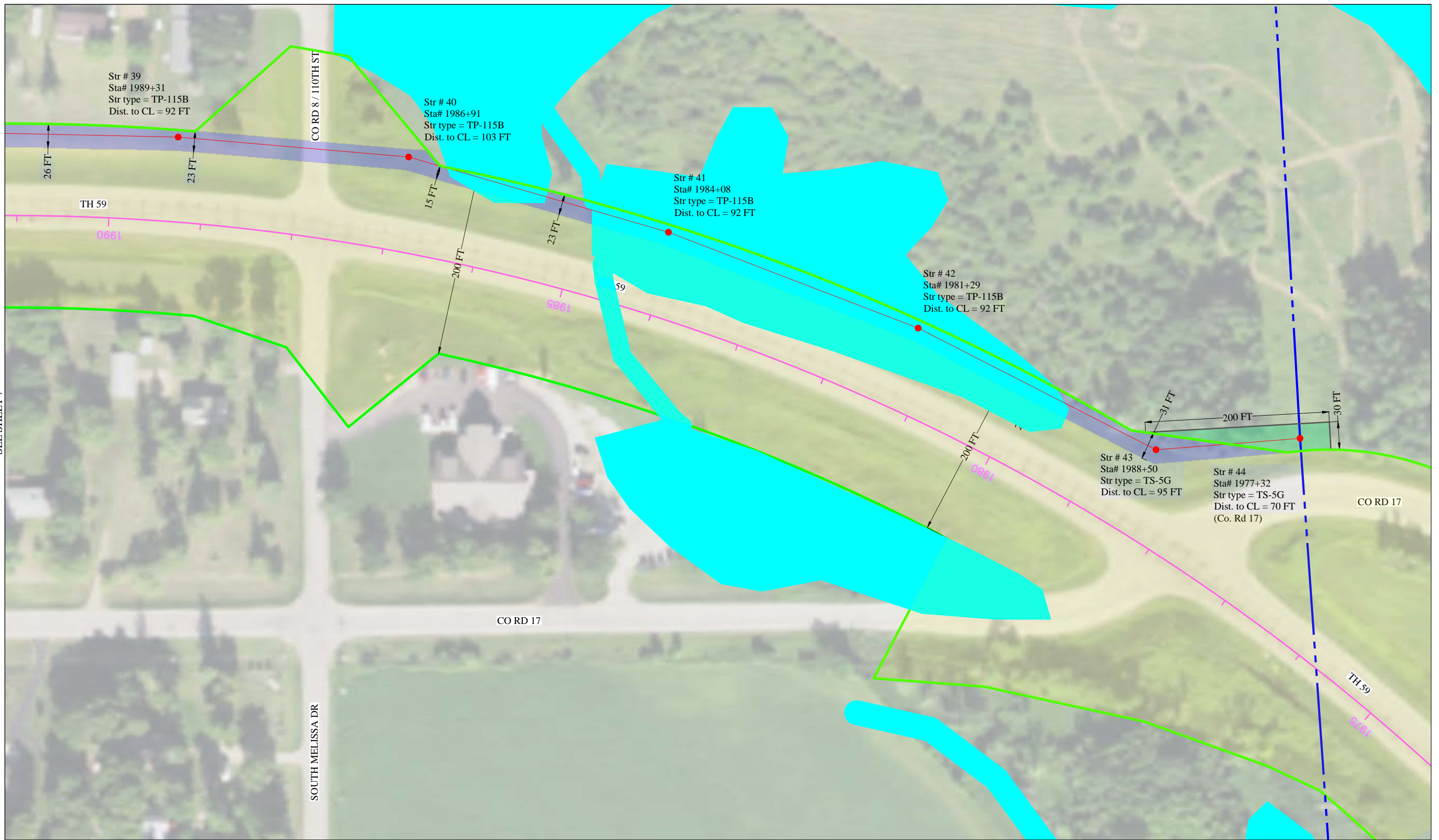


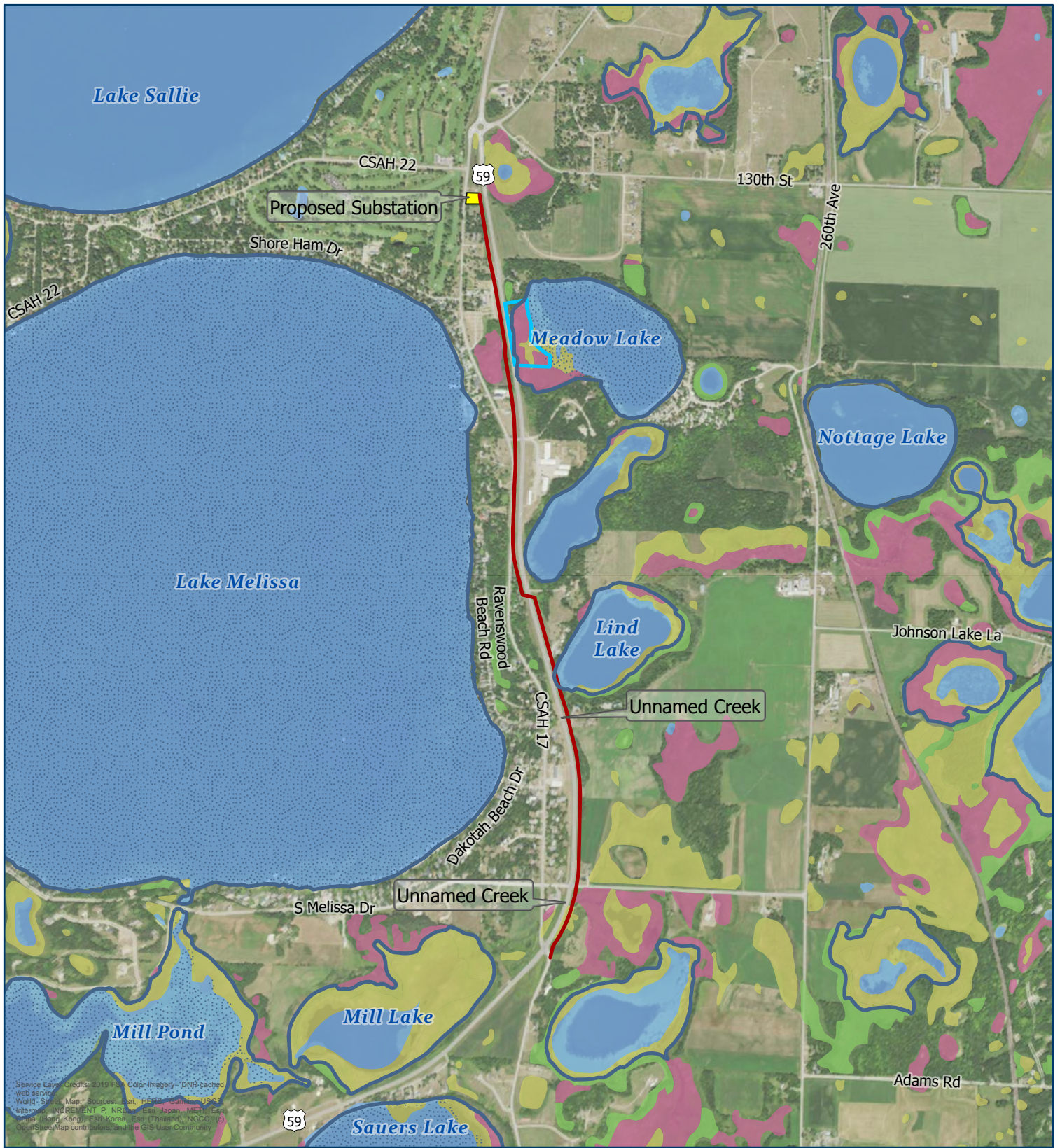
DETROIT LAKES PUBLIC UTILITIES
DETROIT LAKES, MN

MAP 2
PROPOSED 115 kV TRANSMISSION LINE
CORRIDOR RIGHT-OF-WAY MAP

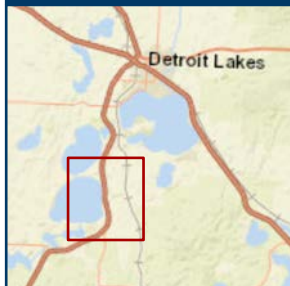
S
H
E
E
T
7 OF 8

SEE SHEET 7





Natural Resources



<ul style="list-style-type: none"> — Proposed 115 kV Transmission Line Proposed Substation Aquatic Management Area (DNR) Lakes of Biological Significance (DNR) Public Waters Inventory Basin (DNR) 	<ul style="list-style-type: none"> Non-delineated Wetlands (NWI) Emergent Forested Scrub-Shrub Open Water
--	---

MILES

0 0.25 0.5

1:24,000

mi COMMERCE DEPARTMENT