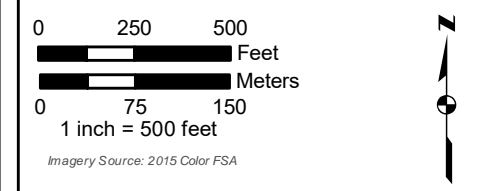
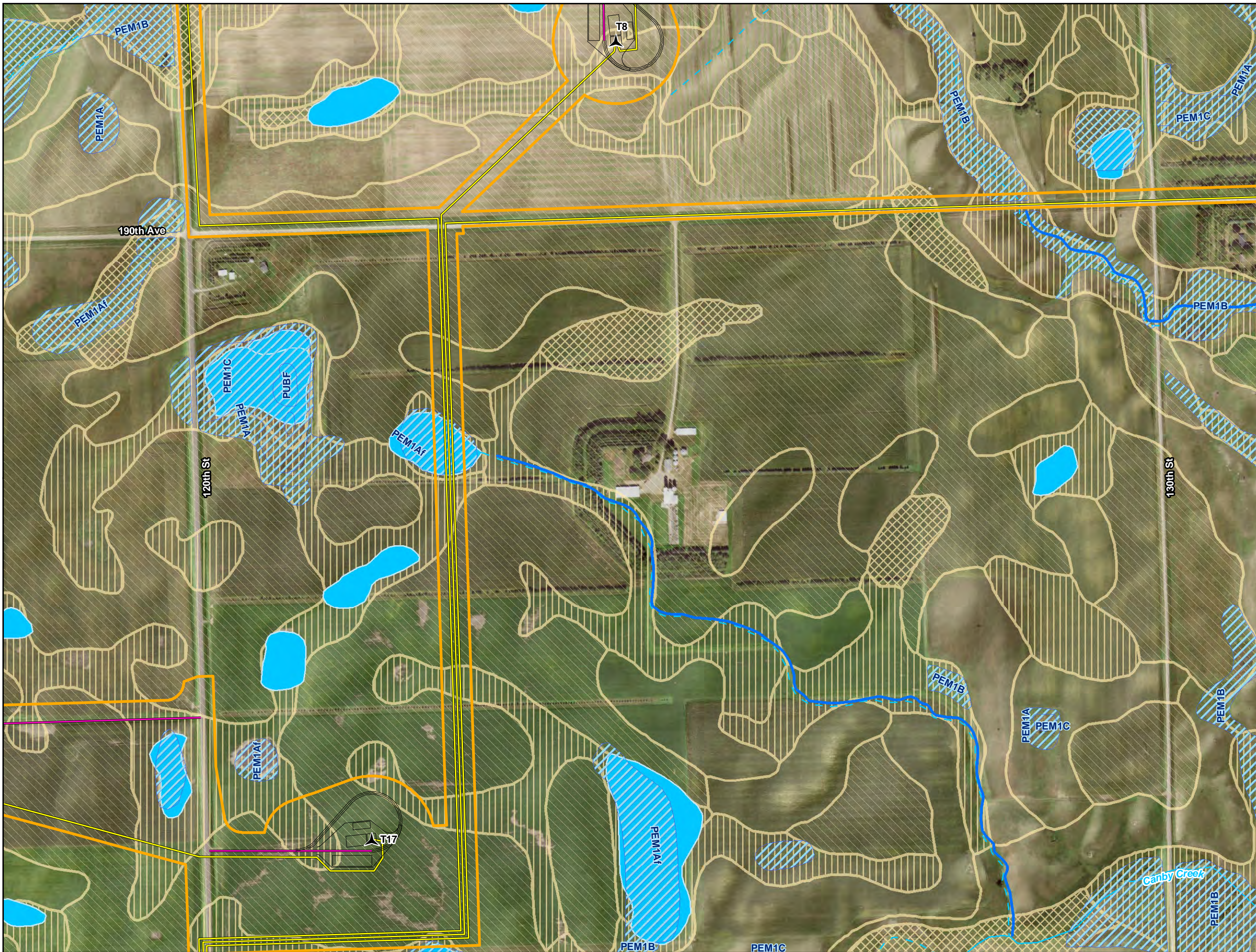


- Environmental Study Area
- Proposed Project Facilities**
- Proposed Turbine Location
- Proposed Turbine Pad Site
- Proposed Access Road
- Proposed Alternate Access
- Proposed Collection Line
- Proposed Facilities Boundary (OM Building and Laydown Yard)
- NWI - MNDNR Update
- Public Waters Inventory**
- Public Water Watercourse
- Public Water Basin/Wetland
- National Hydrography Dataset (NHD)**
- Perennial Stream
- Intermittent Stream
- Canal/Ditch
- Waterbody
- Hydric Soils (SSURGO)**
- Hydric (100%)
- Hydric (66 to 99%)
- Hydric (33 to 65%)
- Hydric (1 to 32%)
- Not Hydric (0%)

**Appendix C**  
**Bitter Root Wind Farm**  
**Flying Cow Wind, LLC**  
**NWI, PWI, NHD and SSURGO Map**  
**Yellow Medicine County, Minnesota**

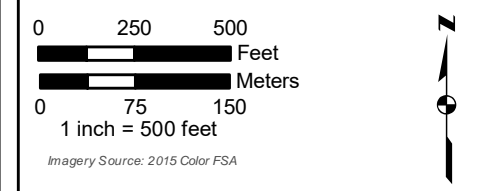
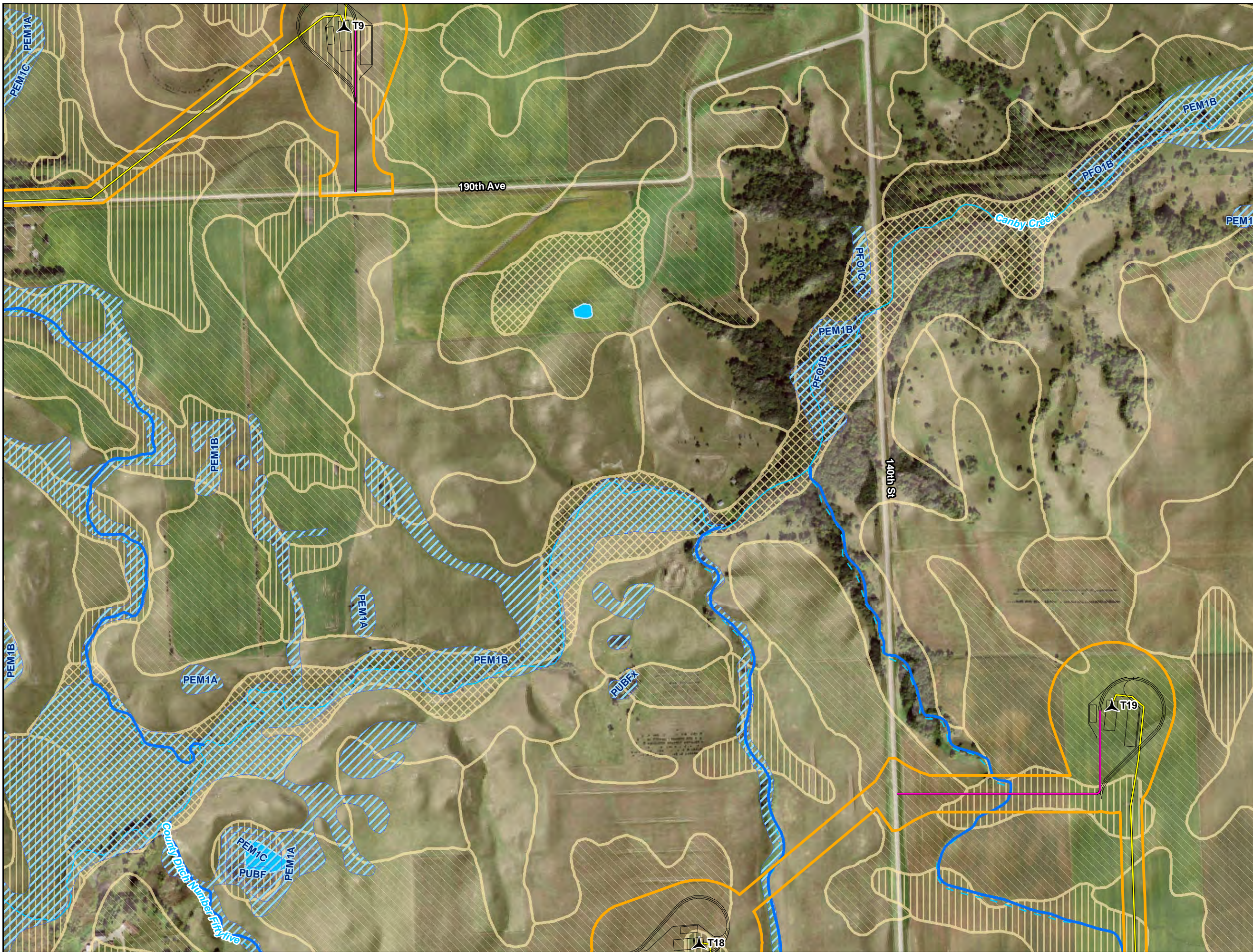
Date: (1/18/2017) Source: Z:\Clients\Q\_TILES\_Americas\Bitter\_Root\Field\_Data\Wetland\_Waterbodies\Reports\2017\NWI\_Report\_20171030\Appendix\_C\_WWI\_Editor\_Root\_WWI\_PWI\_NHD\_SSURGO\_Features\_Map.mxd



- Environmental Study Area
- Proposed Project Facilities**
- Proposed Turbine Location
- Proposed Turbine Pad Site
- Proposed Access Road
- Proposed Alternate Access
- Proposed Collection Line
- Proposed Facilities Boundary (OM Building and Laydown Yard)
- NWI - MNDNR Update
- Public Waters Inventory**
- Public Water Watercourse
- Public Water Basin/Wetland
- National Hydrography Dataset (NHD)**
- Perennial Stream
- Intermittent Stream
- Canal/Ditch
- Waterbody
- Hydric Soils (SSURGO)**
- Hydric (100%)
- Hydric (66 to 99%)
- Hydric (33 to 65%)
- Hydric (1 to 32%)
- Not Hydric (0%)

**Appendix C**  
**Bitter Root Wind Farm**  
**Flying Cow Wind, LLC**  
 NWI, PWI, NHD and SSURGO Map  
 Yellow Medicine County, Minnesota

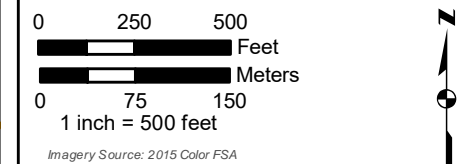
Date: (1/18/2017) Source: Z:\Clients\Q\_1\RES\_Americas\Bitter\_Root\Field\_Data\Wetland\_Waterbodies\Reports\2017\NWI\_Report\_20171030\Appendix\_C\NWI\_Bitter\_Root\NWI\_PWI\_NHD\_SSURGO\_Map.mxd



- Environmental Study Area
- Proposed Project Facilities**
- Proposed Turbine Location
- Proposed Turbine Pad Site
- Proposed Access Road
- Proposed Alternate Access
- Proposed Collection Line
- Proposed Facilities Boundary (OM Building and Laydown Yard)
- NWI - MNDNR Update
- Public Waters Inventory**
- Public Water Watercourse
- Public Water Basin/Wetland
- National Hydrography Dataset (NHD)**
- Perennial Stream
- Intermittent Stream
- Canal/Ditch
- Waterbody
- Hydric Soils (SSURGO)**
- Hydric (100%)
- Hydric (66 to 99%)
- Hydric (33 to 65%)
- Hydric (1 to 32%)
- Not Hydric (0%)

**Appendix C**  
**Bitter Root Wind Farm**  
**Flying Cow Wind, LLC**  
 NWI, PWI, NHD and SSURGO Map  
 Yellow Medicine County, Minnesota

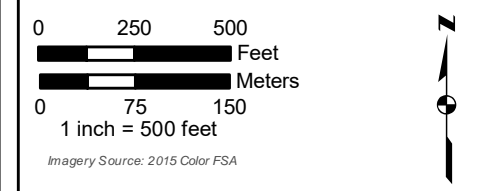
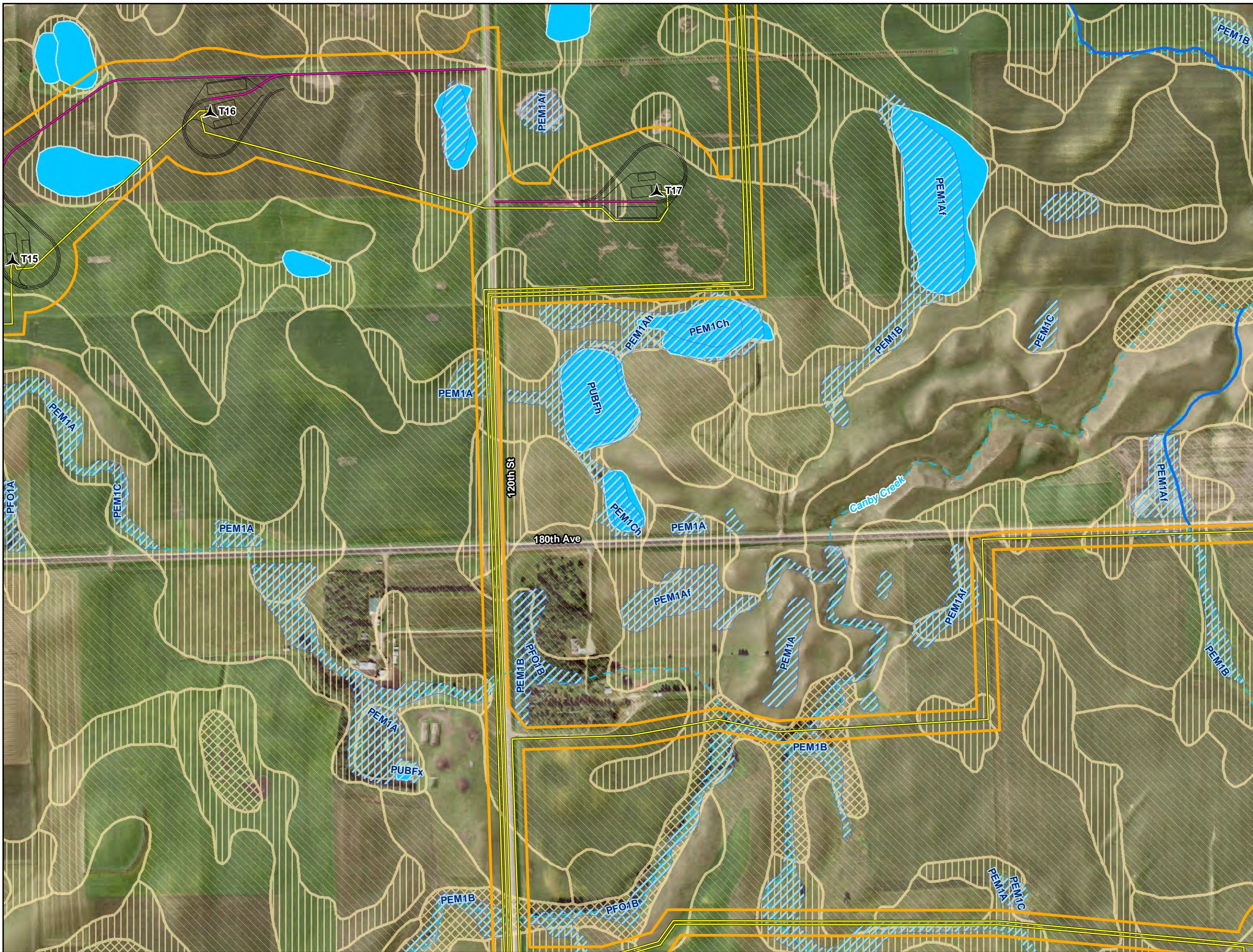
Date: (1/18/2017) Source: Z:\Clients\Q\_TILES\_Americas\Bitter\_Root\Field\_Data\Wetland\_Waterbodies\Reports\2017\NWI\_Report\_20171030\Appendix\_C\NWI\_Bitter\_Root\NWI\_PWI\_NHD\_SSURGO\_Features\_Map.mxd



- Environmental Study Area
- Proposed Project Facilities**
- Proposed Turbine Location
- Proposed Turbine Pad Site
- Proposed Access Road
- Proposed Alternate Access
- Proposed Collection Line
- Proposed Facilities Boundary (OM Building and Laydown Yard)
- NWI - MNDNR Update
- Public Waters Inventory**
- Public Water Watercourse
- Public Water Basin/Wetland
- National Hydrography Dataset (NHD)**
- Perennial Stream
- Intermittent Stream
- Canal/Ditch
- Waterbody
- Hydric Soils (SSURGO)**
- Hydric (100%)
- Hydric (66 to 99%)
- Hydric (33 to 65%)
- Hydric (1 to 32%)
- Not Hydric (0%)

**Appendix C**  
**Bitter Root Wind Farm**  
**Flying Cow Wind, LLC**  
 NWI, PWI, NHD and SSURGO Map  
 Yellow Medicine County, Minnesota

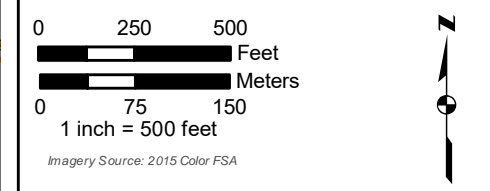
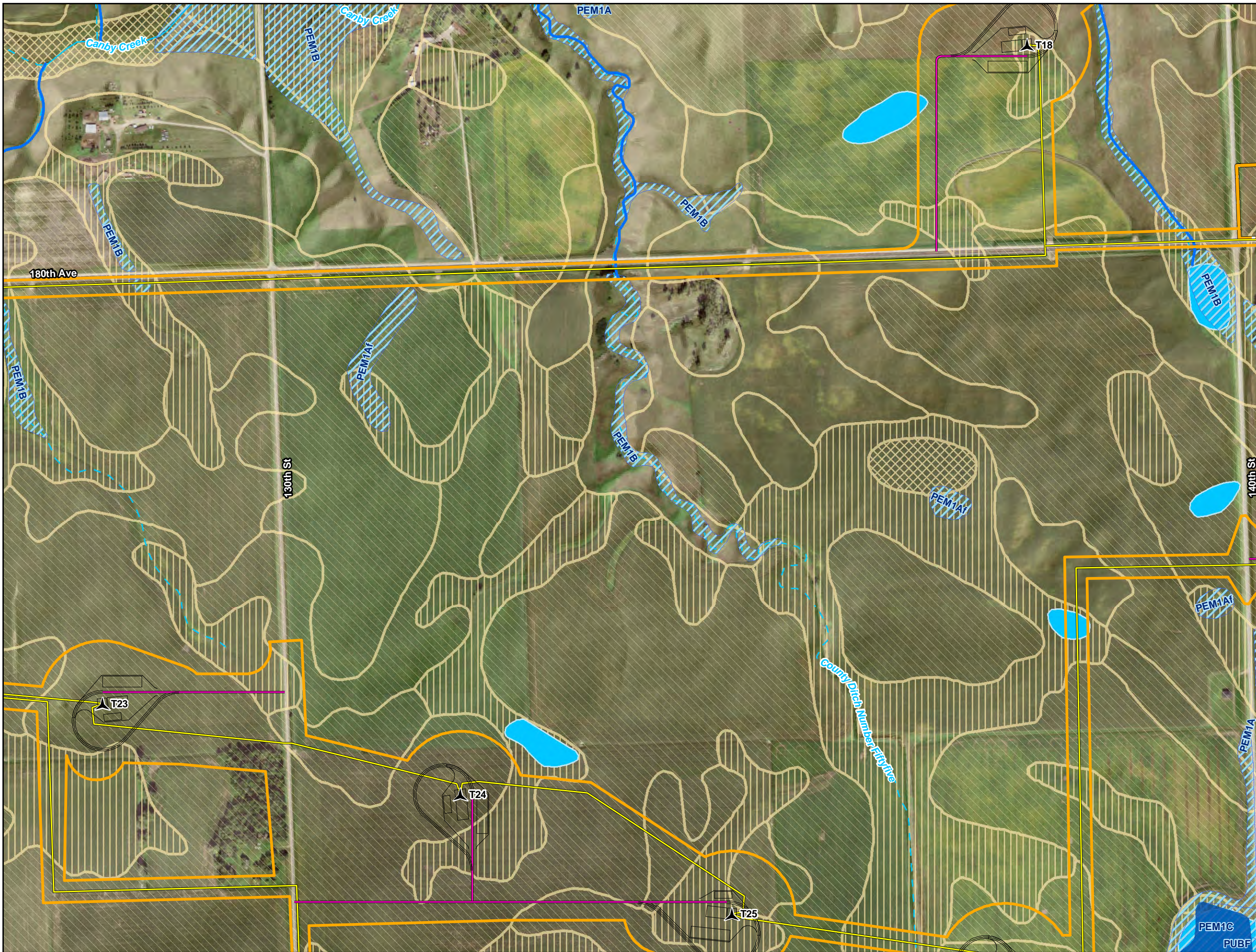
Date: (1/18/2017) Source: Z:\Clients\Q\_TIREES\_Americas\Bitter\_Root\Field\_Data\Wetland\_Waterbodies\Reports\2017\NWI\_Report\_20171030\Appendix\_C\_WWI\_Editor\_Root\_WWI\_PWL\_NHD\_SSURGO\_Features\_Map.mxd



- Environmental Study Area
- Proposed Project Facilities**
- Proposed Turbine Location
- Proposed Turbine Pad Site
- Proposed Access Road
- Proposed Alternate Access
- Proposed Collection Line
- Proposed Facilities Boundary (OM Building and Laydown Yard)
- NWI - MNDNR Update
- Public Waters Inventory**
- Public Water Watercourse
- Public Water Basin/Wetland
- National Hydrography Dataset (NHD)**
- Perennial Stream
- Intermittent Stream
- Canal/Ditch
- Waterbody
- Hydric Soils (SSURGO)**
- Hydric (100%)
- Hydric (66 to 99%)
- Hydric (33 to 65%)
- Hydric (1 to 32%)
- Not Hydric (0%)

**Appendix C**  
**Bitter Root Wind Farm**  
**Flying Cow Wind, LLC**  
 NWI, PWI, NHD and SSURGO Map  
 Yellow Medicine County, Minnesota

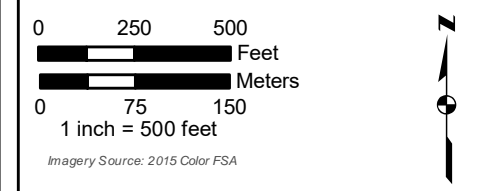
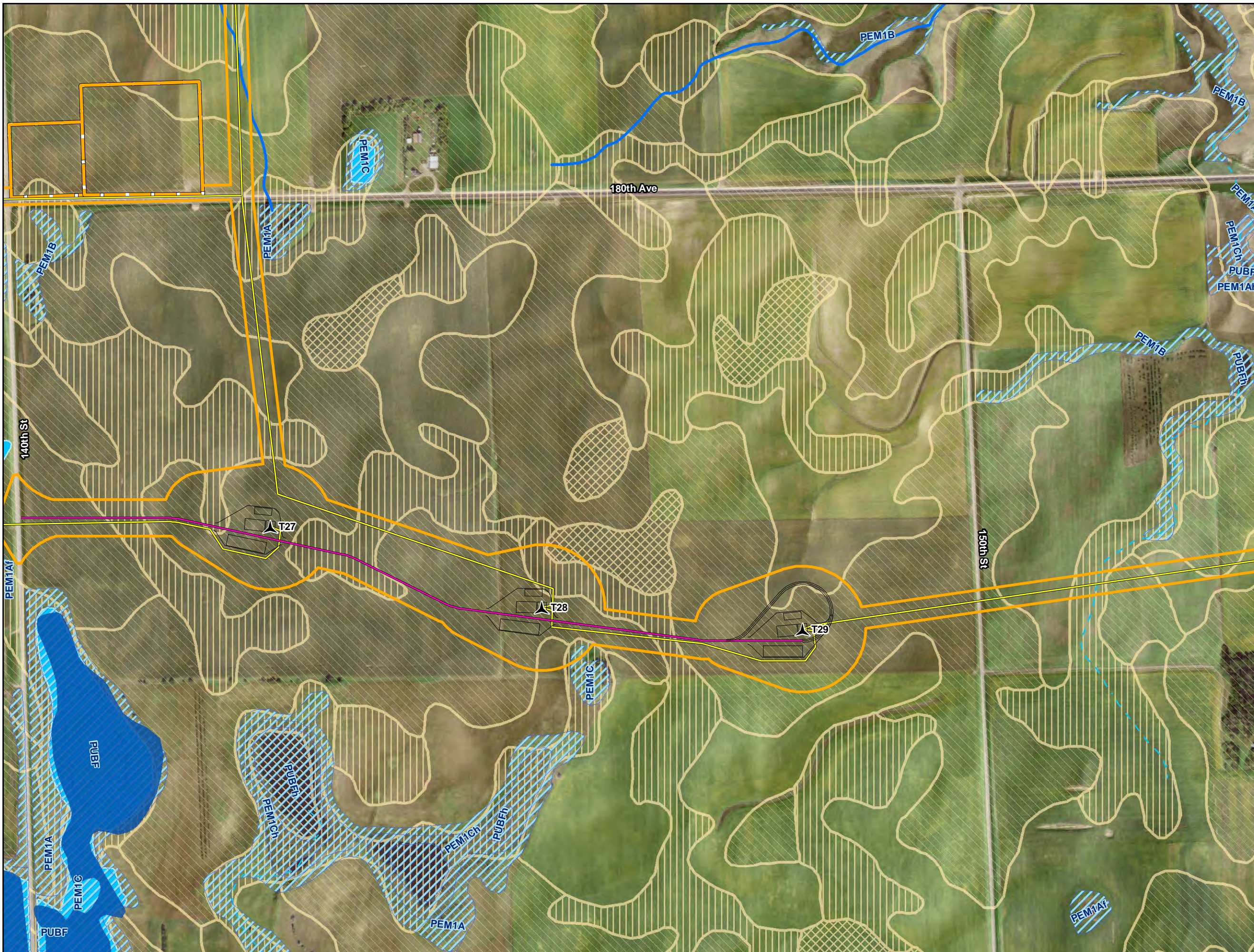
Date: (1/18/2017) Source: Z:\Clients\Q\_1\FRES\_Americas\Bitter\_Root\Field\_Data\Wetland\_Waterbodies\Reports\2017\NWI\_Report\_20171030\Appendix\_C\NWI\_Editor\_Root\NWI\_PWI\_NHD\_SSURGO\_Features\_Map.mxd



- Environmental Study Area
- Proposed Project Facilities**
- Proposed Turbine Location
- Proposed Turbine Pad Site
- Proposed Access Road
- Proposed Alternate Access
- Proposed Collection Line
- Proposed Facilities Boundary (OM Building and Laydown Yard)
- NWI - MNDNR Update
- Public Waters Inventory**
- Public Water Watercourse
- Public Water Basin/Wetland
- National Hydrography Dataset (NHD)**
- Perennial Stream
- Intermittent Stream
- Canal/Ditch
- Waterbody
- Hydric Soils (SSURGO)**
- Hydric (100%)
- Hydric (66 to 99%)
- Hydric (33 to 65%)
- Hydric (1 to 32%)
- Not Hydric (0%)

**Appendix C**  
**Bitter Root Wind Farm**  
**Flying Cow Wind, LLC**  
 NWI, PWI, NHD and SSURGO Map  
 Yellow Medicine County, Minnesota

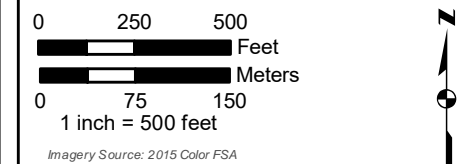
Date: (1/18/2017) Source: Z:\Clients\Q\_1\RES\_Americas\Bitter\_Root\Final\_Data\Wetland\_Waterbodies\Reports\2017\NWI\_Report\_20171030\Appendix\_C\NWI\_Editor\_Root\NWI\_PWI\_NHD\_SSURGO\_Features\_Map.mxd



- Environmental Study Area
- Proposed Project Facilities**
- Proposed Turbine Location
- Proposed Turbine Pad Site
- Proposed Access Road
- Proposed Alternate Access
- Proposed Collection Line
- Proposed Facilities Boundary (OM Building and Laydown Yard)
- NWI - MNDNR Update
- Public Waters Inventory**
- Public Water Watercourse
- Public Water Basin/Wetland
- National Hydrography Dataset (NHD)**
- Perennial Stream
- Intermittent Stream
- Canal/Ditch
- Waterbody
- Hydric Soils (SSURGO)**
- Hydric (100%)
- Hydric (66 to 99%)
- Hydric (33 to 65%)
- Hydric (1 to 32%)
- Not Hydric (0%)

**Appendix C**  
**Bitter Root Wind Farm**  
**Flying Cow Wind, LLC**  
 NWI, PWI, NHD and SSURGO Map  
 Yellow Medicine County, Minnesota

Date: (1/18/2017) Source: Z:\Clients\Q\_TIRE\S\_Americas\Bitter\_Root\Field\_Data\Wetland\_Waterbodies\Reports\2017\NWI\_Report\_20171030\Appendix\_C\NWI\_Bitter\_Root\NWI\_PWI\_NHD\_SSURGO\_Features\_Map.mxd

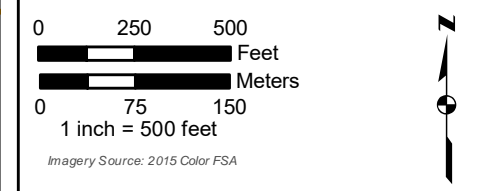
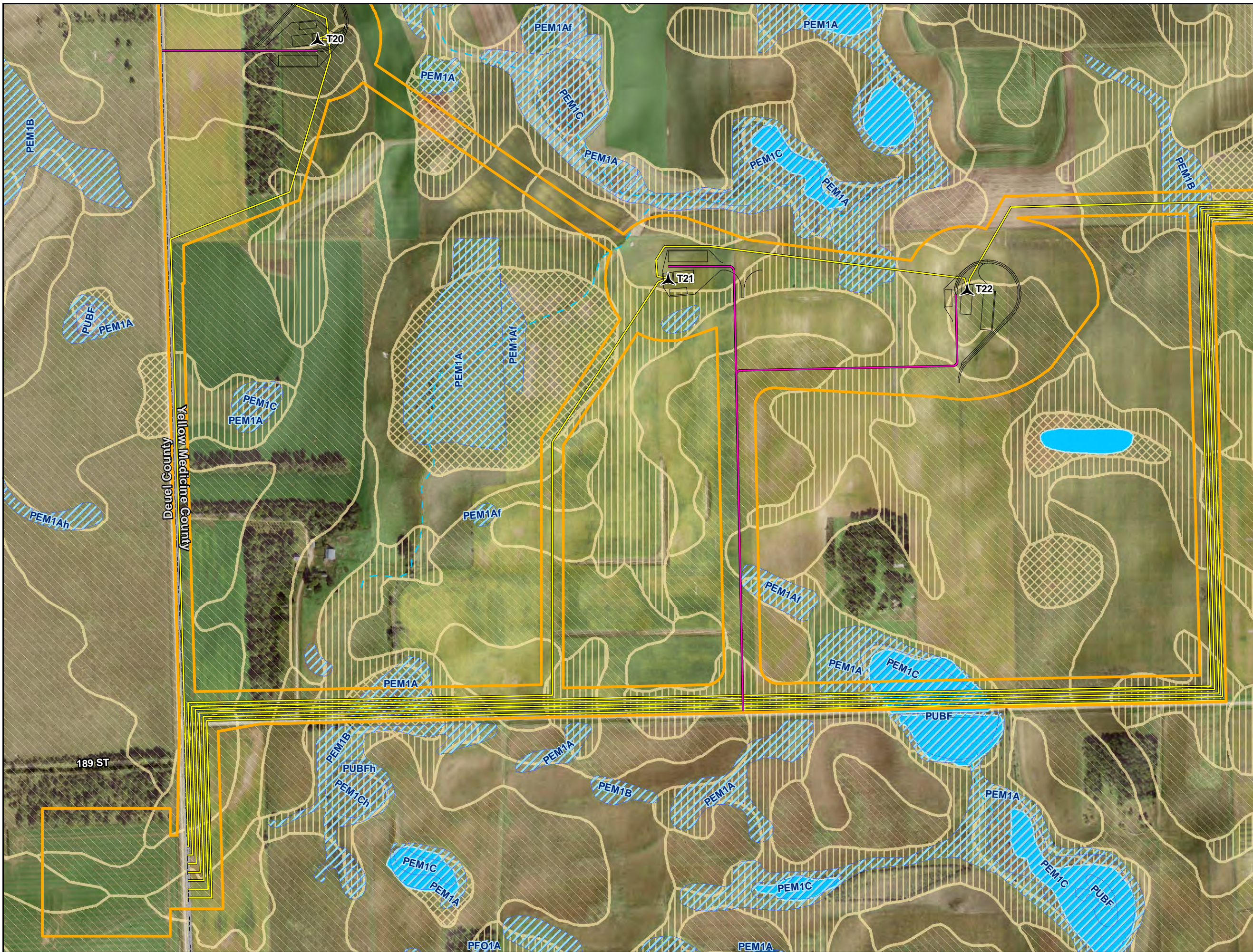


- Environmental Study Area
- Proposed Project Facilities**
- Proposed Turbine Location
- Proposed Turbine Pad Site
- Proposed Access Road
- Proposed Alternate Access
- Proposed Collection Line
- Proposed Facilities Boundary (OM Building and Laydown Yard)
- NWI - MNDNR Update
- Public Waters Inventory**
- Public Water Watercourse
- Public Water Basin/Wetland
- National Hydrography Dataset (NHD)**
- Perennial Stream
- Intermittent Stream
- Canal/Ditch
- Waterbody
- Hydric Soils (SSURGO)**
- Hydric (100%)
- Hydric (66 to 99%)
- Hydric (33 to 65%)
- Hydric (1 to 32%)
- Not Hydric (0%)

**Appendix C**  
**Bitter Root Wind Farm**  
**Flying Cow Wind, LLC**  
 NWI, PWI, NHD and SSURGO Map  
 Yellow Medicine County, Minnesota

Date: (1/18/2017) Source: Z:\Clients\Q\_TIREES\_Americas\Bitter\_Root\Field\_Data\Wetland\_Waterbodies\Reports\2017\NWI\_Report\_20171030\Appendix\_C\NWI\_Editor\_Root\_WWI\_PWL\_NHD\_SSURGO\_Features\_Map.mxd





- ▭ Environmental Study Area
- Proposed Project Facilities**
- ▲ Proposed Turbine Location
- Proposed Turbine Pad Site
- Proposed Access Road
- - - Proposed Alternate Access
- Proposed Collection Line
- Proposed Facilities Boundary (OM Building and Laydown Yard)
- ~ NWI - MNDNR Update
- Public Waters Inventory**
- ~ Public Water Watercourse
- Public Water Basin/Wetland
- National Hydrography Dataset (NHD)**
- ~ Perennial Stream
- - - Intermittent Stream
- ~ Canal/Ditch
- Waterbody
- Hydric Soils (SSURGO)**
- Hydric (100%)
- Hydric (66 to 99%)
- Hydric (33 to 65%)
- Hydric (1 to 32%)
- Not Hydric (0%)

**Appendix C**  
**Bitter Root Wind Farm**  
**Flying Cow Wind, LLC**  
**NWI, PWI, NHD and SSURGO Map**  
**Yellow Medicine County, Minnesota**

Date: (1/18/2017) Source: Z:\Clients\Q\_TIRE\S\_Americas\Bitter\_Root\Field\_Data\Wetland\_Waterbodies\Reports\2017\NWI\_Report\_20171030\Appendix\_C\NWI\_Bitter\_Root\NWI\_PWL\_NHD\_SSURGO\_Features\_Map.mxd