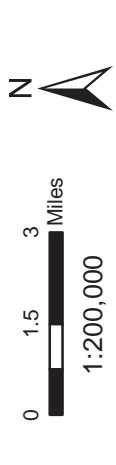
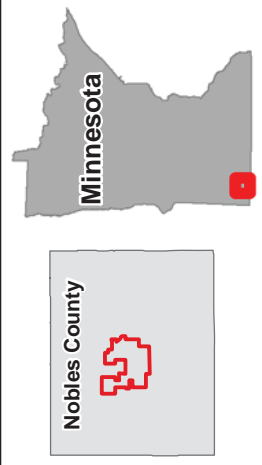
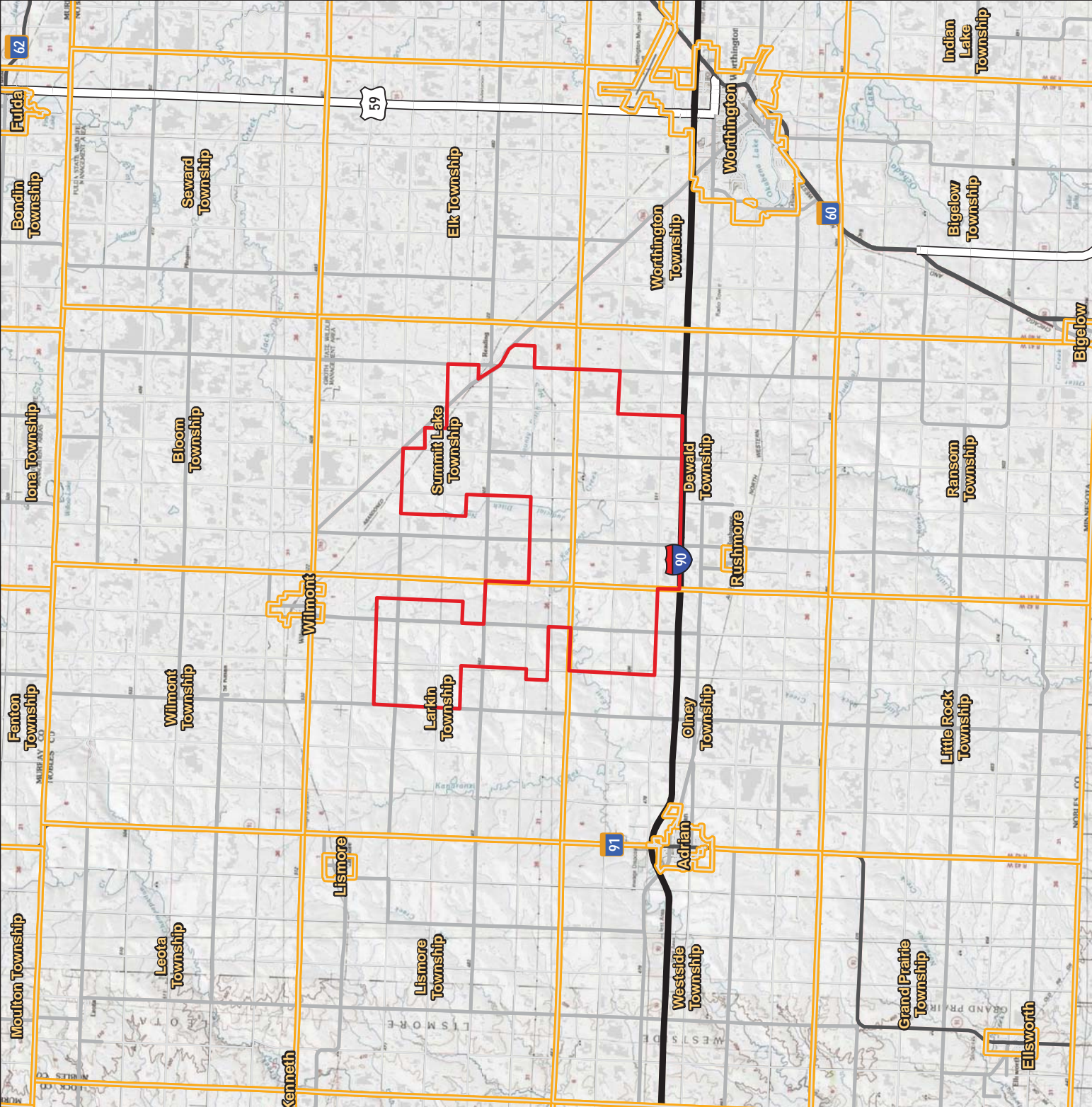


Figures



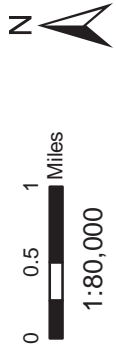
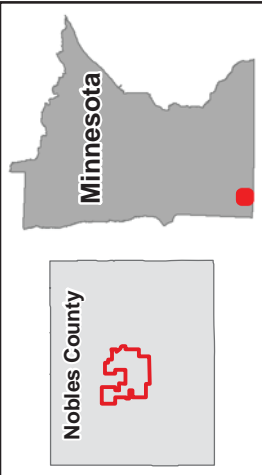
- Project Boundary
- City/Township

Data Source: Xcel Energy, US Census, MDOT, USGS

Figure 1 Project Location Nobles Repower Project Nobles County, Minnesota



For Environmental Review Purposes Only



- Turbine (91m rotor diameter)
- Turbine (97m rotor diameter)
- Turbine (136m rotor diameter)
- Residence (within 1 mile of Project Boundary)
- Permanent Met Tower
- Nobles County Substation
- Proposed Crane Path
- Access Road
- Collection Line
- River/Stream
- Existing 345 kV Transmission Line
- Project Boundary
- O&M Area
- Project Substation
- City/Township
- Lake, Pond or Reservoir
- Wildlife Management

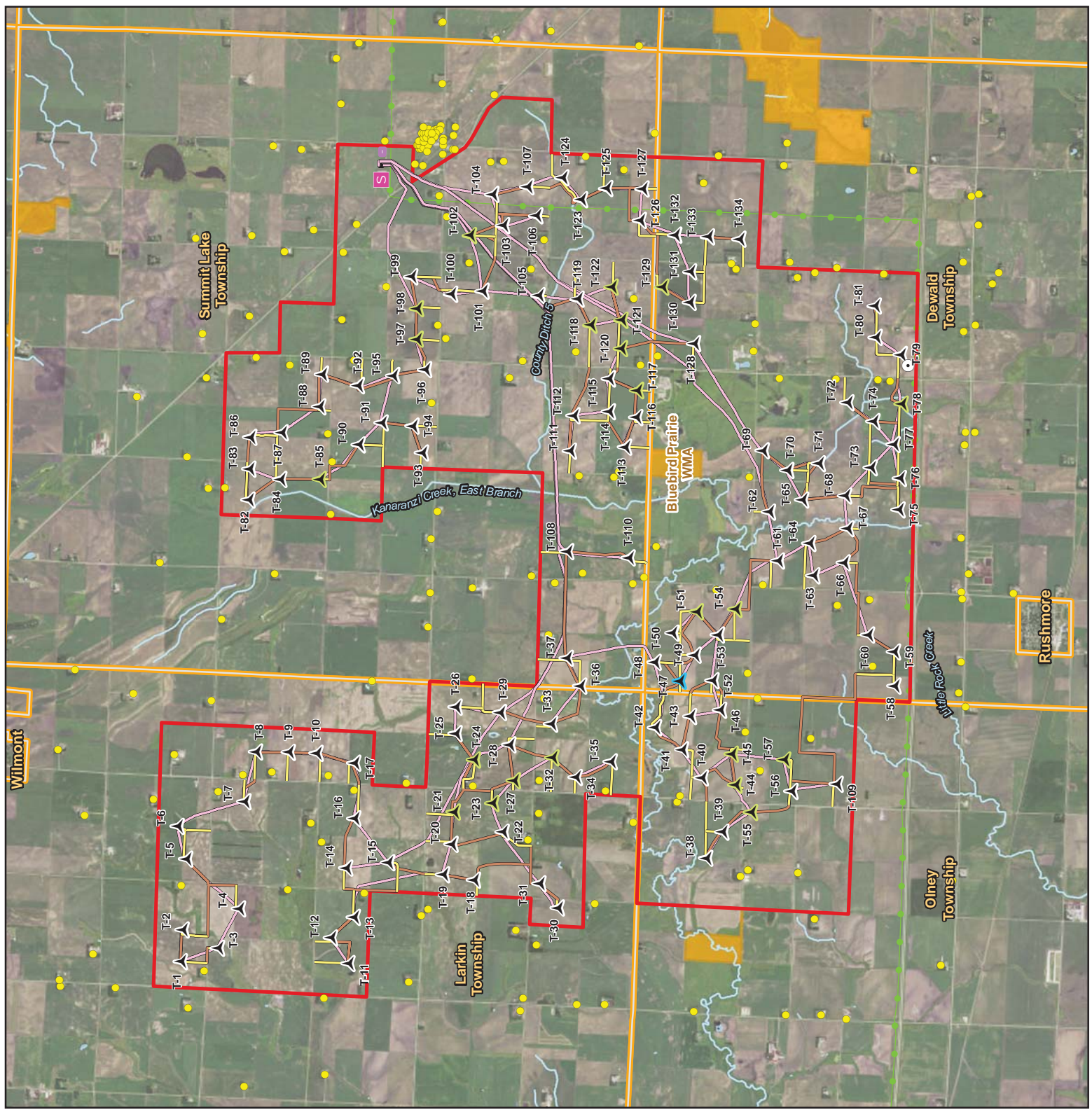
Data Source: Xcel Energy, US Census, MDT, MDNR, 2019 NAIP

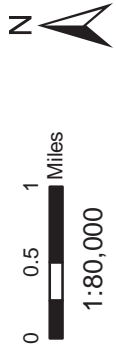
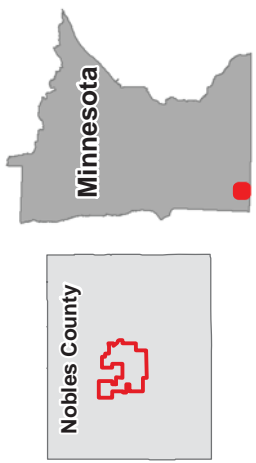
Figure 2 Project Area and Facilities

Nobles Repower Project

Nobles County, Minnesota

For Environmental Review Purposes Only





- Turbine (91m rotor diameter)
- Turbine (97m rotor diameter)
- Turbine (136m rotor diameter)
- Community Wind South
- Existing Wind Project
- Project Boundary
- 2009 Project Boundary
- City/Township

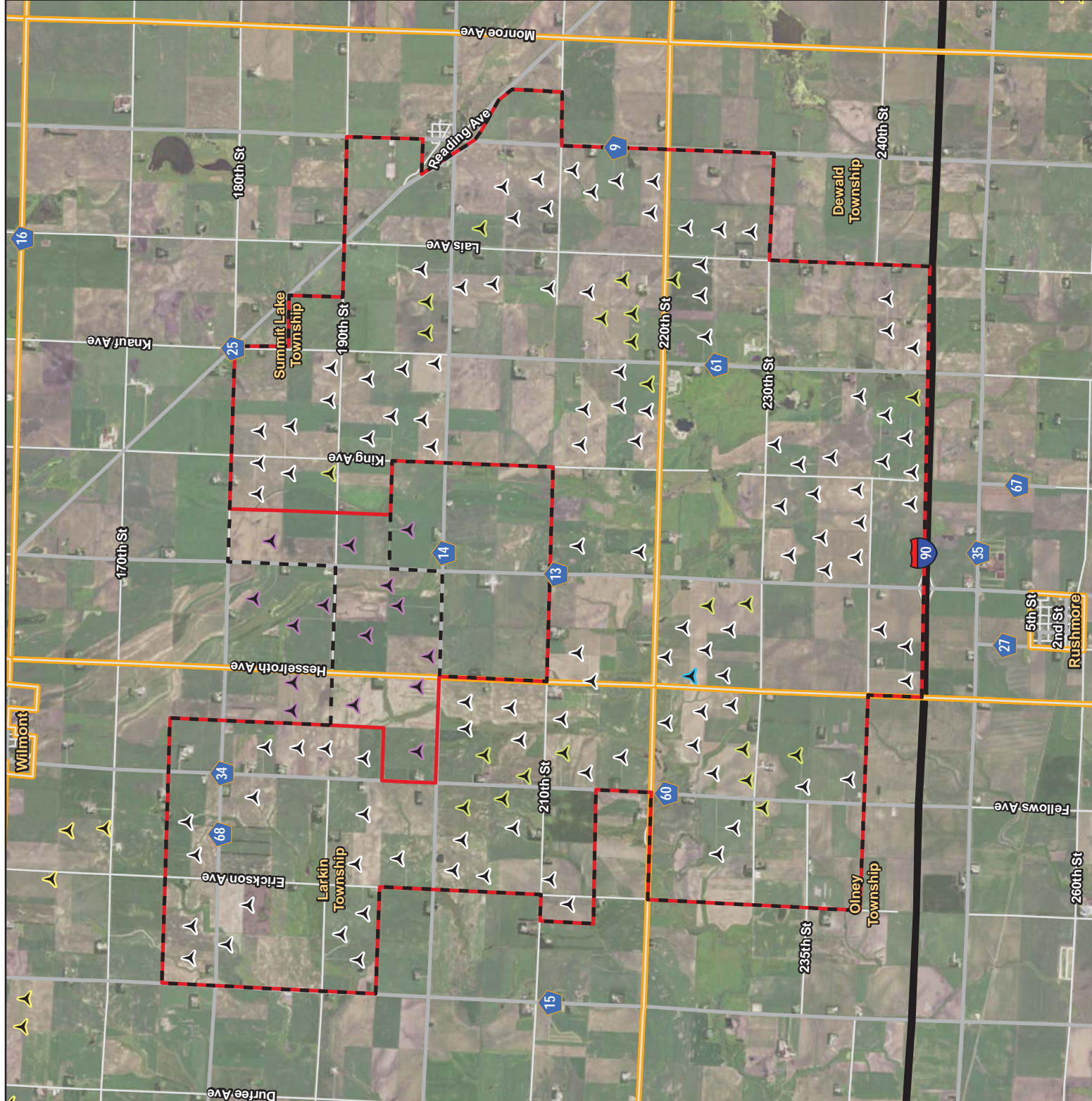
Data Source: Xcel Energy, US Census, 2019 NAIP

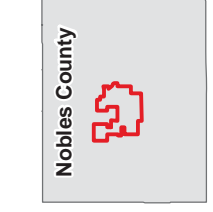
Figure 3 Project Boundary Modification

Nobles Repower Project

Nobles County, Minnesota

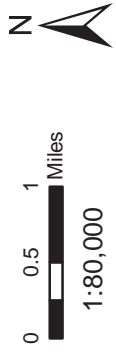
For Environmental Review Purposes Only





Minnesota

Nobles County



- Turbine (91m rotor diameter)
- Turbine (97m rotor diameter)
- Turbine (136m rotor diameter)
- Residential Structure (within 1 mile of Project Area Boundary)
- Existing Substation
- Project Boundary
- O&M Area
- Project Substation
- Proposed Crane Path
- Snowmobile Trail
- Existing Transmission Line
- Public Water Watercourse
- Existing Lease Agreement
- Wind Rights Only (Signed)
- Wind Rights Only (in process)
- Wildlife Management Area (WMA)
- Public Water Basin

Data Source: Xcel Energy, US Census, MDT, USGS

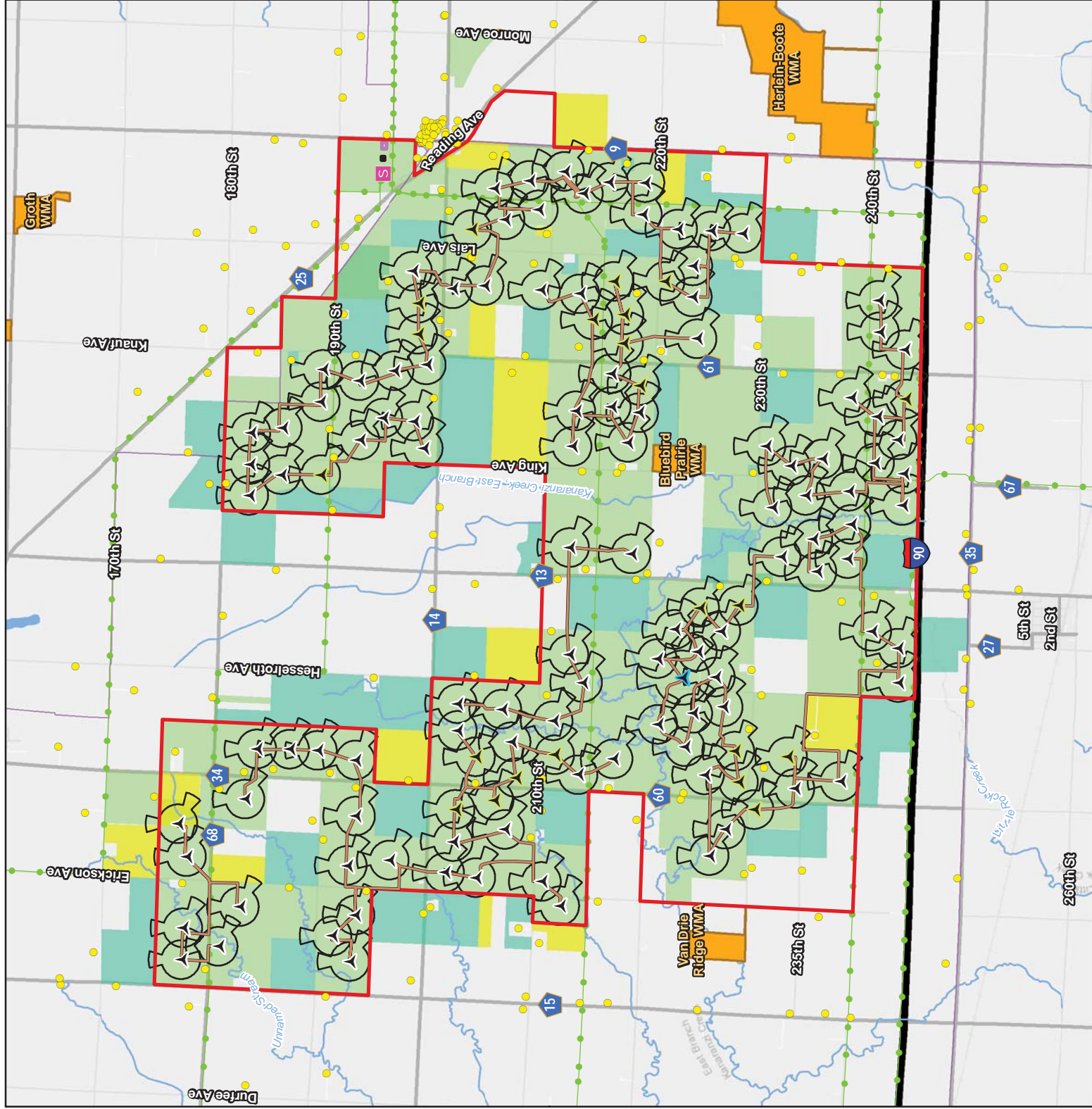
Figure 4 Wind Access Buffer Setbacks

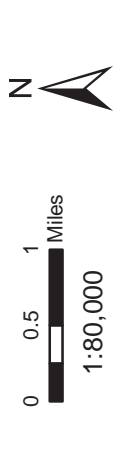
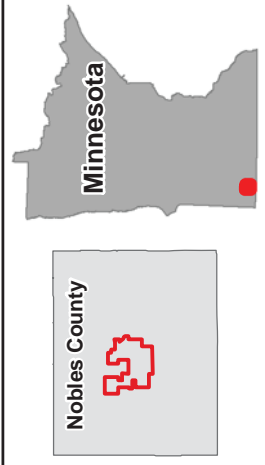
Nobles Repower Project

Nobles County, Minnesota



For Environmental Review Purposes Only





- Turbine (91m rotor diameter)
- Turbine (97m rotor diameter)
- Turbine (136m rotor diameter)
- Permanent Met Tower
- Residential Structure (within 1 mile of Project Area Boundary)
- Existing 345 kV Transmission Line
- Road
- Project Boundary
- Setback Buffer
- Wetland (Type 3)

Data Source: Xcel Energy, US Census, MDT, MDNR, 2019 NAIP

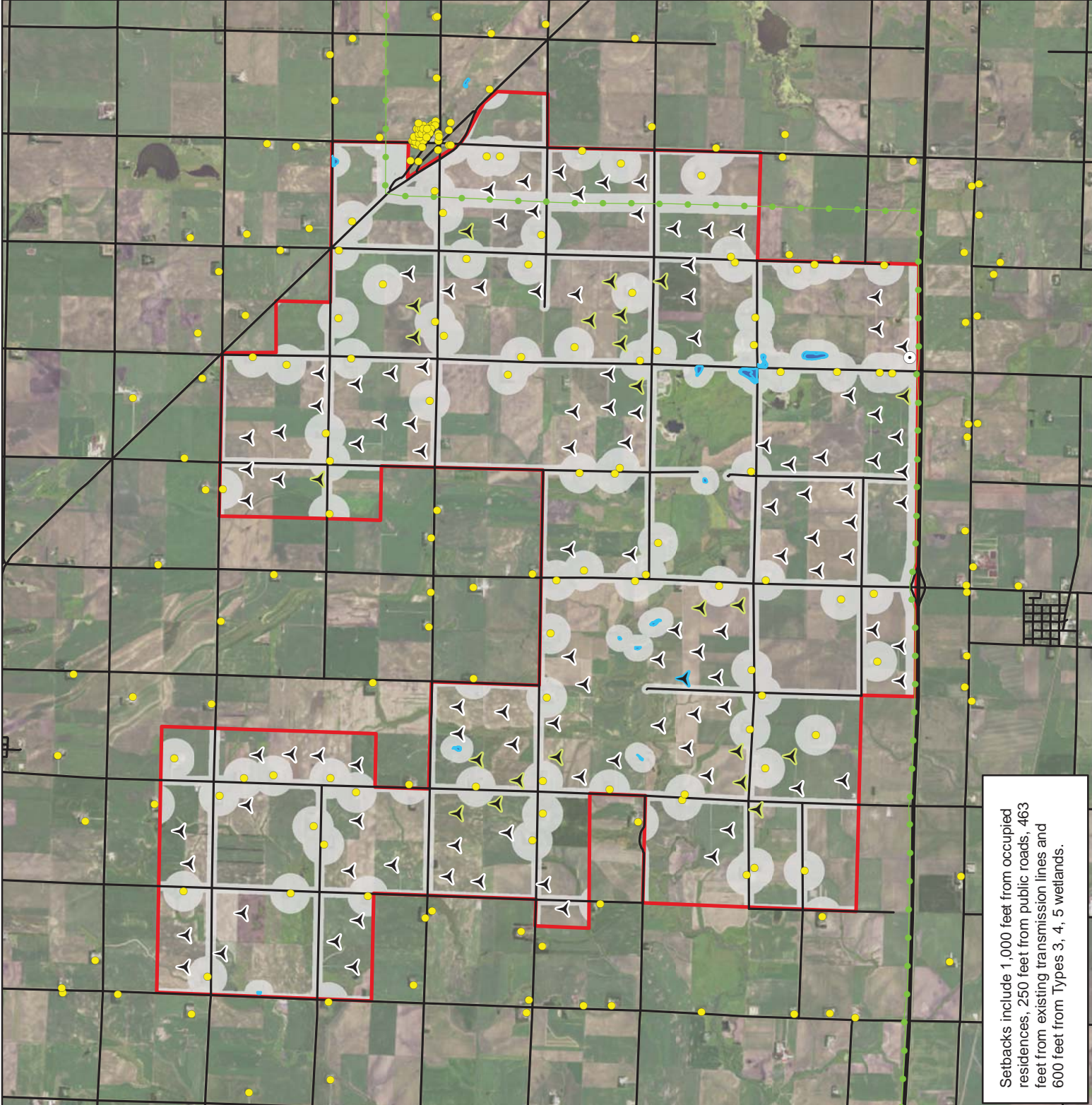
**Figure 5
Setbacks**

Nobles Repower Project

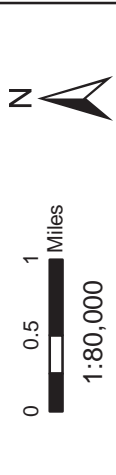
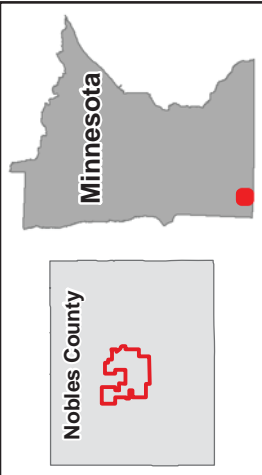
Nobles County, Minnesota



For Environmental Review Purposes Only



Setbacks include 1,000 feet from occupied residences, 250 feet from public roads, 463 feet from existing transmission lines and 600 feet from Types 3, 4, 5 wetlands.



- Turbine (91m rotor diameter)
- Turbine (97m rotor diameter)
- Turbine (136m rotor diameter)
- Existing Wind Project
- Project Boundary
- Non-Participating (within 1 mile of Project Area)
- Participating (within 1 mile of Project Area)

**Sound Pressure Levels
(Turbine Only)**

- 35 dBA
- 40 dBA
- 45 dBA
- 47 dBA

Data Source: Xcel Energy, ESRI

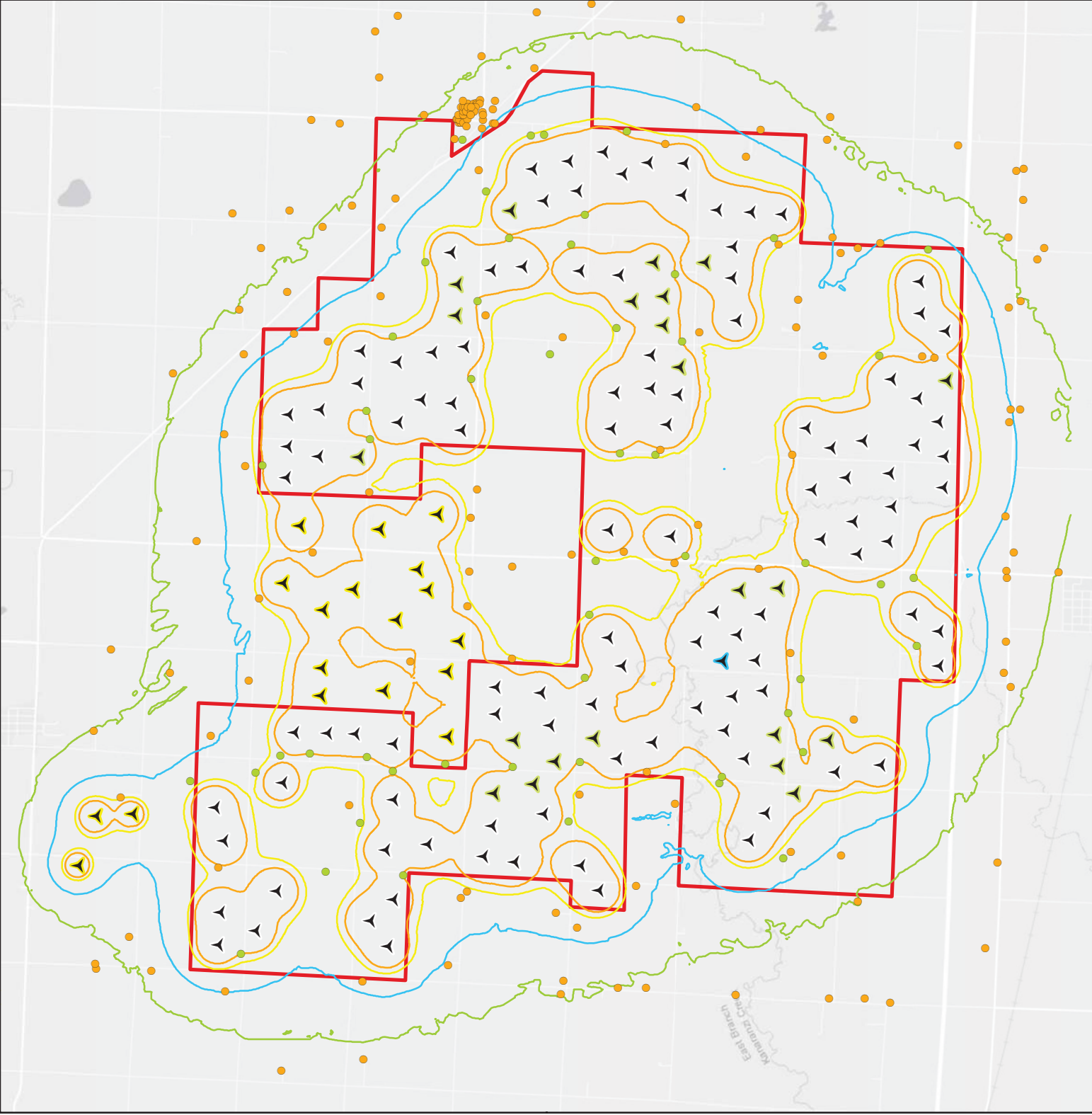
**Figure 7
Sound/Noise**

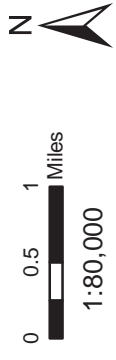
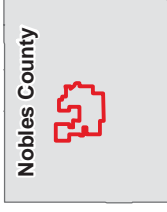
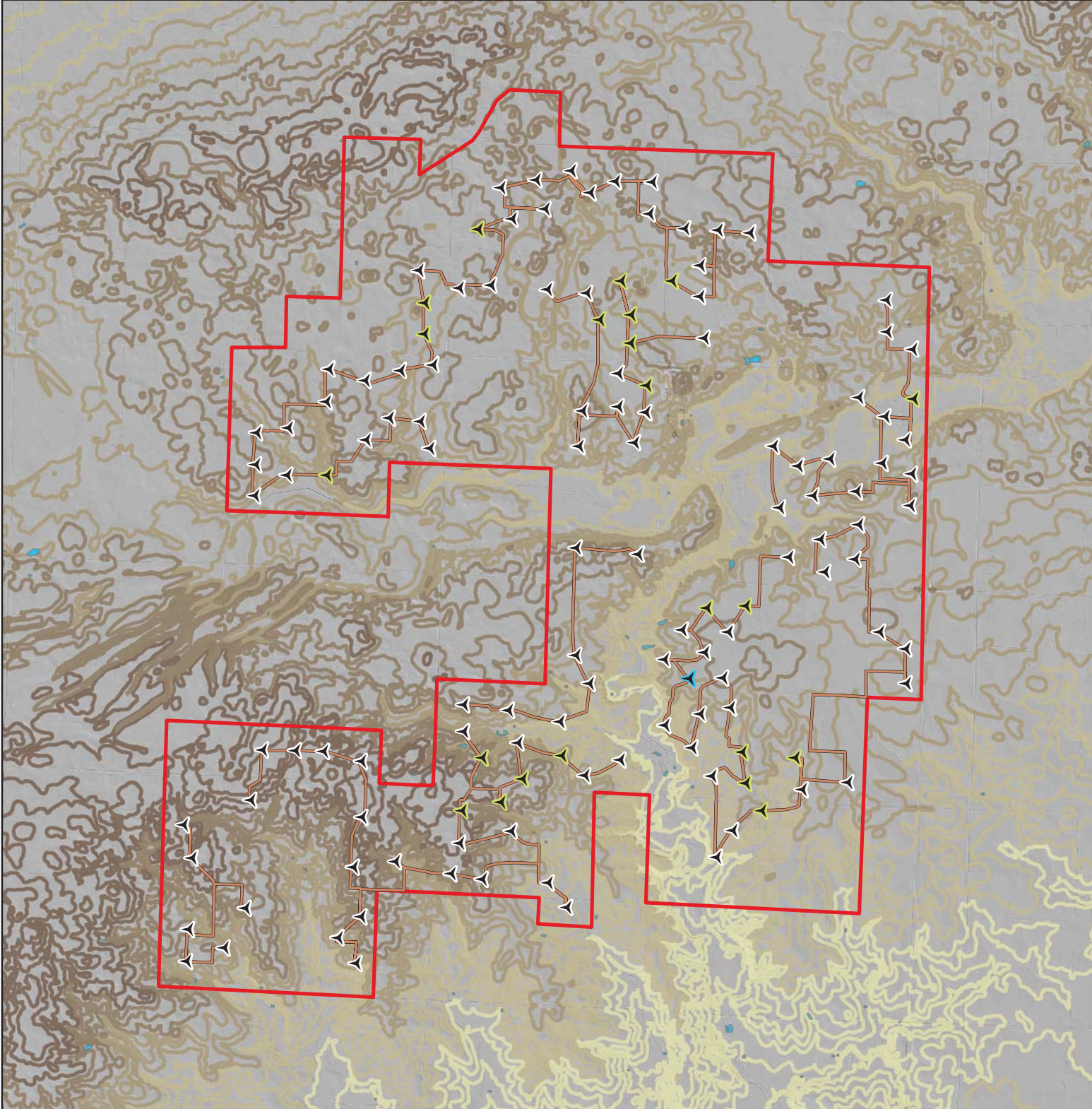
Nobles Repower Project

Nobles County, Minnesota



For Environmental Review Purposes Only





- Turbine (91m rotor diameter)
 - Turbine (97m rotor diameter)
 - Turbine (136m rotor diameter)
 - Proposed Crane Path
 - Project Boundary
 - City/Township
 - River/Stream
 - Lake, Pond, or Reservoir
- Contour Elevation (feet)**
- 1710 - 1780
 - 1680 - 1710
 - 1650 - 1680
 - 1610 - 1650
 - 1540 - 1610

Data Source: Xcel Energy, US Census, USGS, MDNR

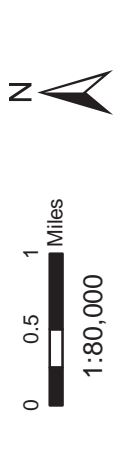
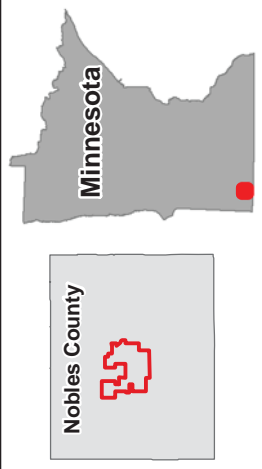
Figure 8 Topographic Map

Nobles Repower Project

Nobles County, Minnesota



For Environmental Review Purposes Only



- Turbine (91m rotor diameter)
- Turbine (97m rotor diameter)
- Turbine (136m rotor diameter)
- Existing Wind Project (within 1 mile of Project Area Boundary)
- Residential Structure (within 1 mile of Project Area Boundary)

- Project Boundary
- City/Township

Shadow Hours Per Year



Data Source: Xcel Energy, US Census, ESRI

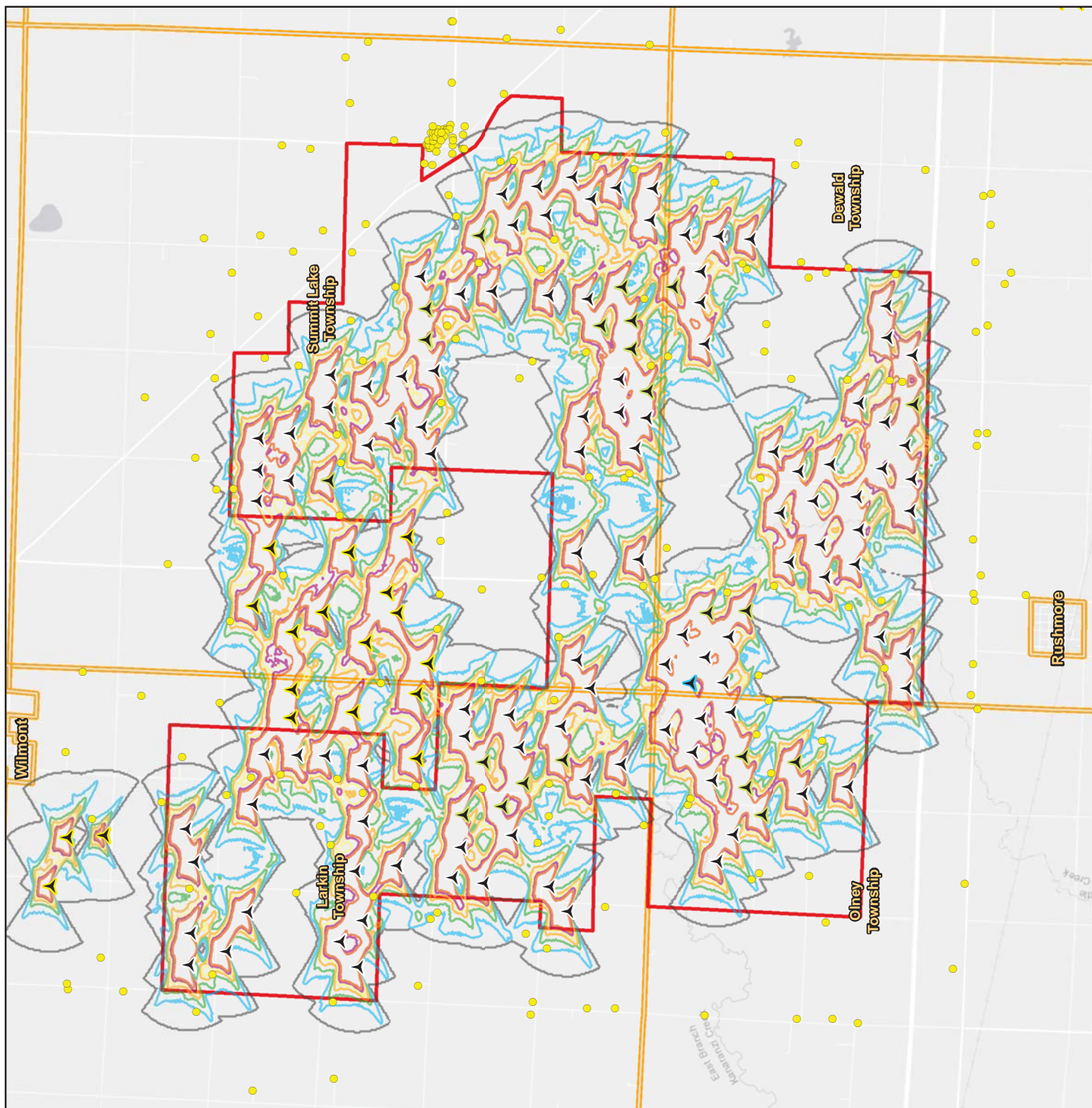
**Figure 9
Shadow Flicker**

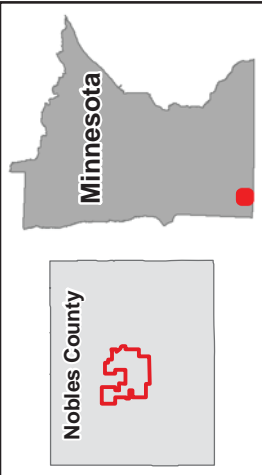
Nobles Repower Project

Nobles County, Minnesota



For Environmental Review Purposes Only





0 0.5 1 Miles
1:80,000

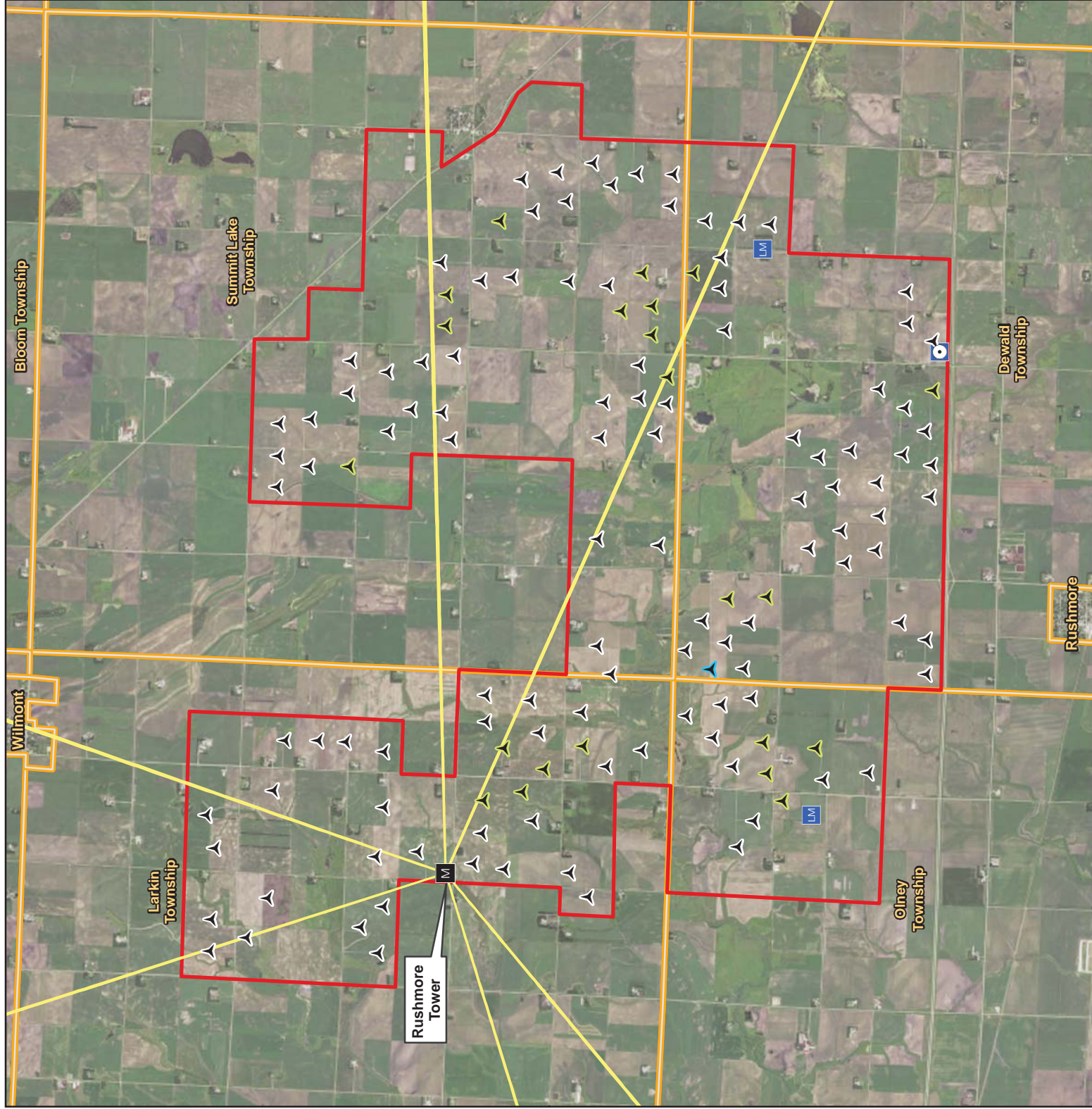
- Turbine (91m rotor diameter)
- Turbine (97m rotor diameter)
- Turbine (136m rotor diameter)
- Land Mobile
- Microwave Tower
- Met Tower
- Project Boundary
- City/Township
- Microwave Beam Path

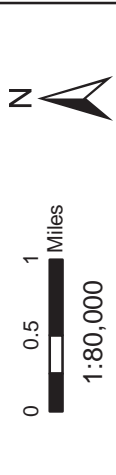
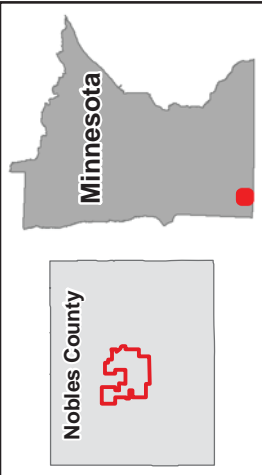
Data Source: Xcel Energy, US Census, Comsearch, 2019 NAIP

Figure 10 Microwave Beam Path Nobles Repower Project Nobles County, Minnesota



For Environmental Review Purposes Only





- Turbine (91m rotor diameter)
- Turbine (97m rotor diameter)
- Turbine (136m rotor diameter)
- Met Tower
- Proposed Crane Path
- Project Boundary
- City/Township
- River/Stream
- Lake, Pond or Reservoir
- Railroad ROW Prairie
- Native Prairie
- Native Plant Community
- Wildlife Management Area (WMA)
- Sites of Biodiversity Significance**
- High
- Moderate
- Below

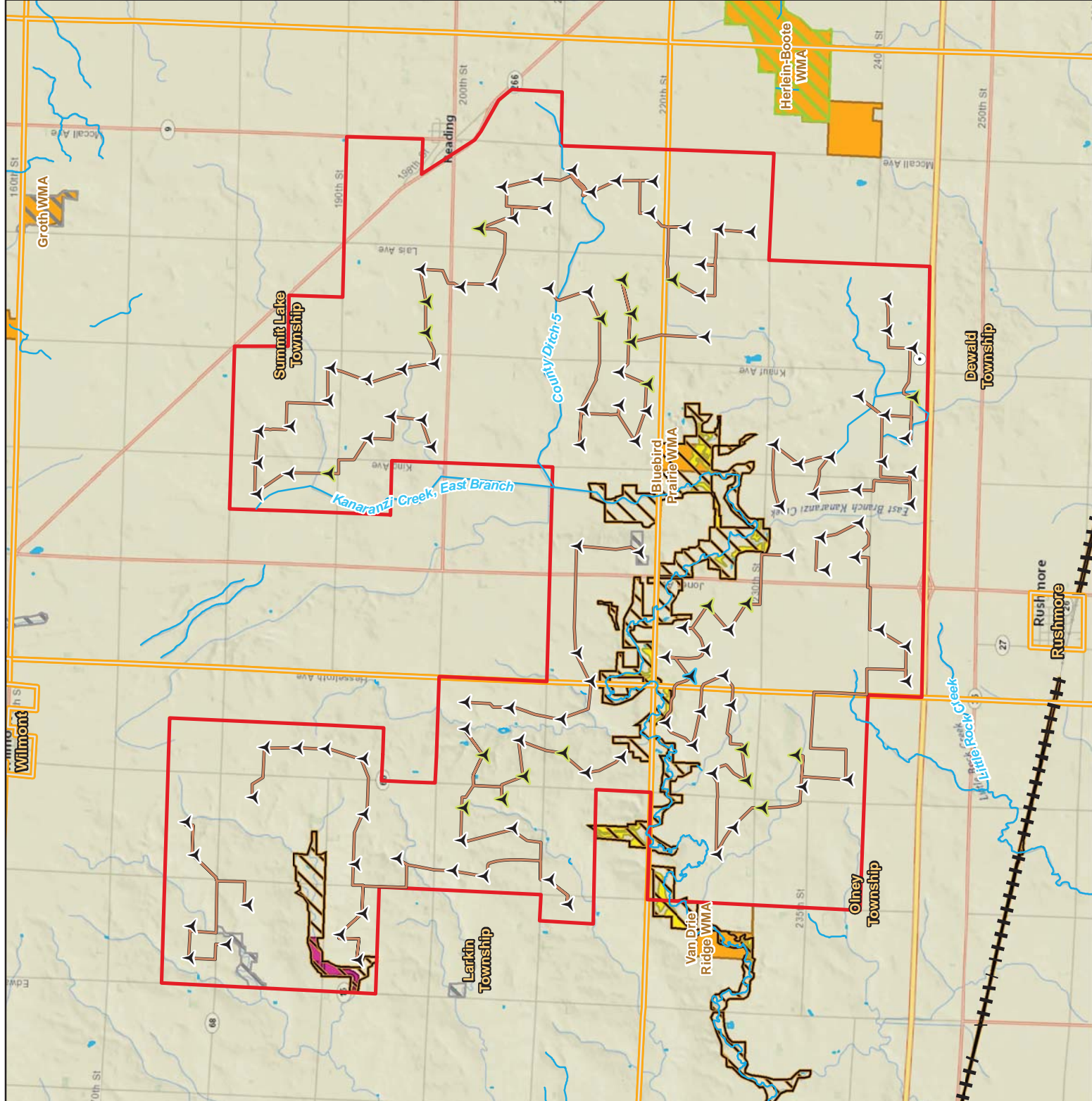
Data Source: Xcel Energy, US Census, MDNR, ESRI

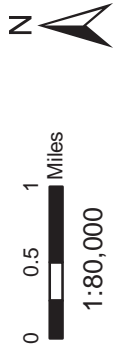
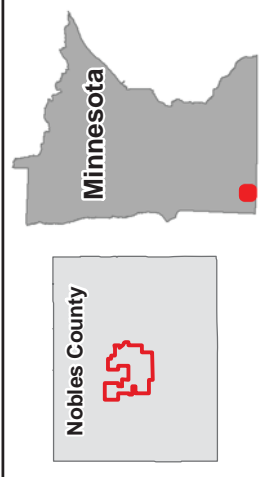
Figure 11 Rare and Unique Features

Nobles Repower Project

Nobles County, Minnesota

For Environmental Review Purposes Only





- Turbine (91m rotor diameter)
- Turbine (97m rotor diameter)
- Turbine (136m rotor diameter)
- Proposed Crane Path
- Project Boundary
- City/Township
- NLCD Land Cover**
- Barren Land
- Cultivated Crops
- Forested (All Categories)
- Developed Land (All Categories)
- Emergent Herbaceous Wetlands
- Hay/Pasture
- Herbaceous
- Open Water
- Shrub/Scrub
- Woody Wetlands

Data Source: Xcel Energy, US Census, USGS.

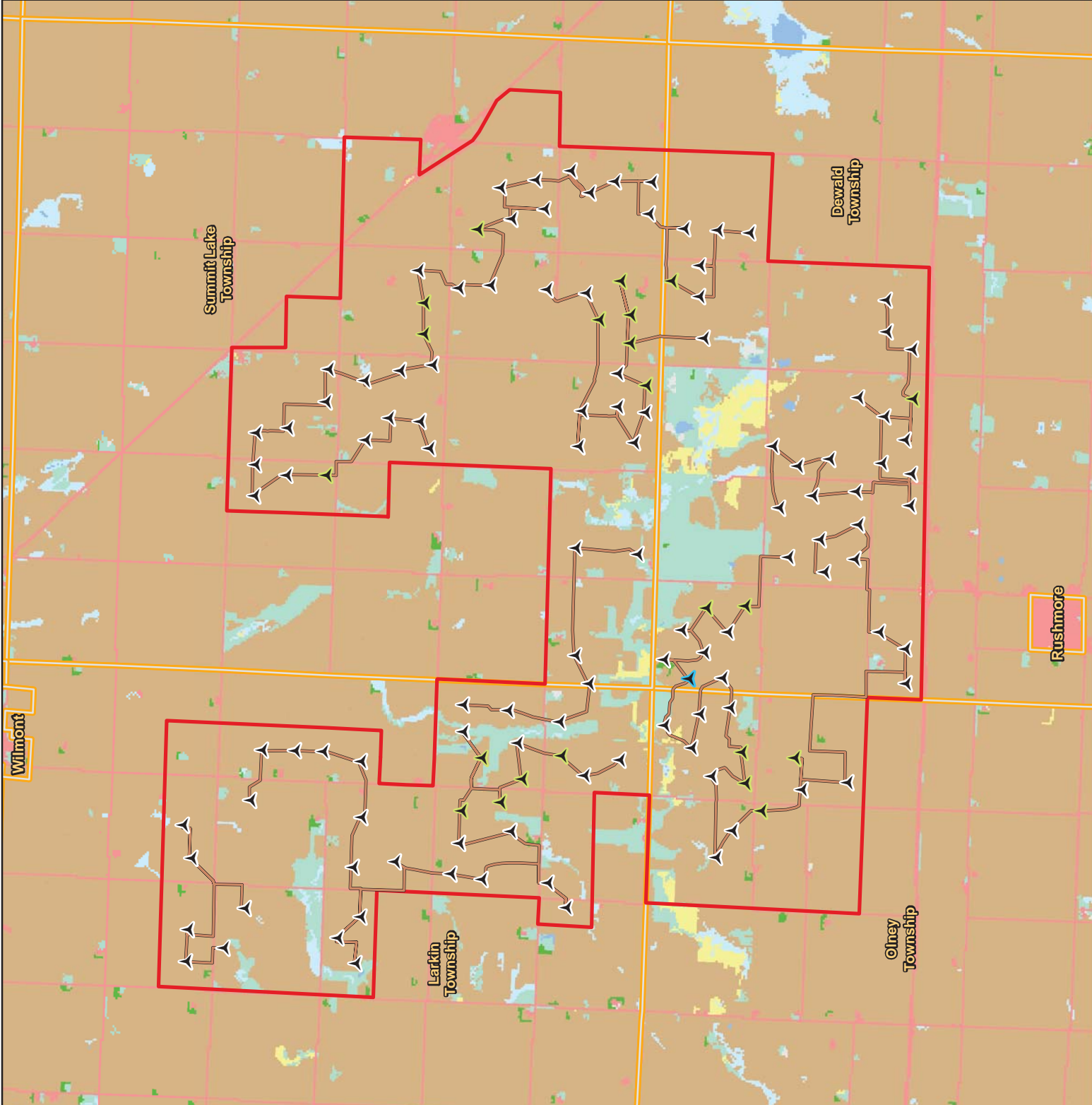
Figure 12 Land Cover

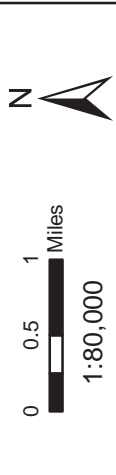
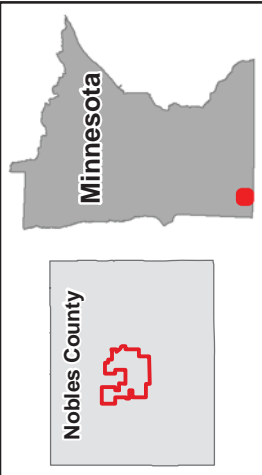
Nobles Repower Project

Nobles County, Minnesota



For Environmental Review Purposes Only





- Turbine (91m rotor diameter)
- Turbine (97m rotor diameter)
- Turbine (136m rotor diameter)
- Proposed Crane Path
- Project Boundary
- City/Township
- SSURGO Farmland Classification**
- Prime Farmland
- Farmland of Statewide Importance
- Not Prime Farmland

Data Source: Xcel Energy, US Census, NRCS

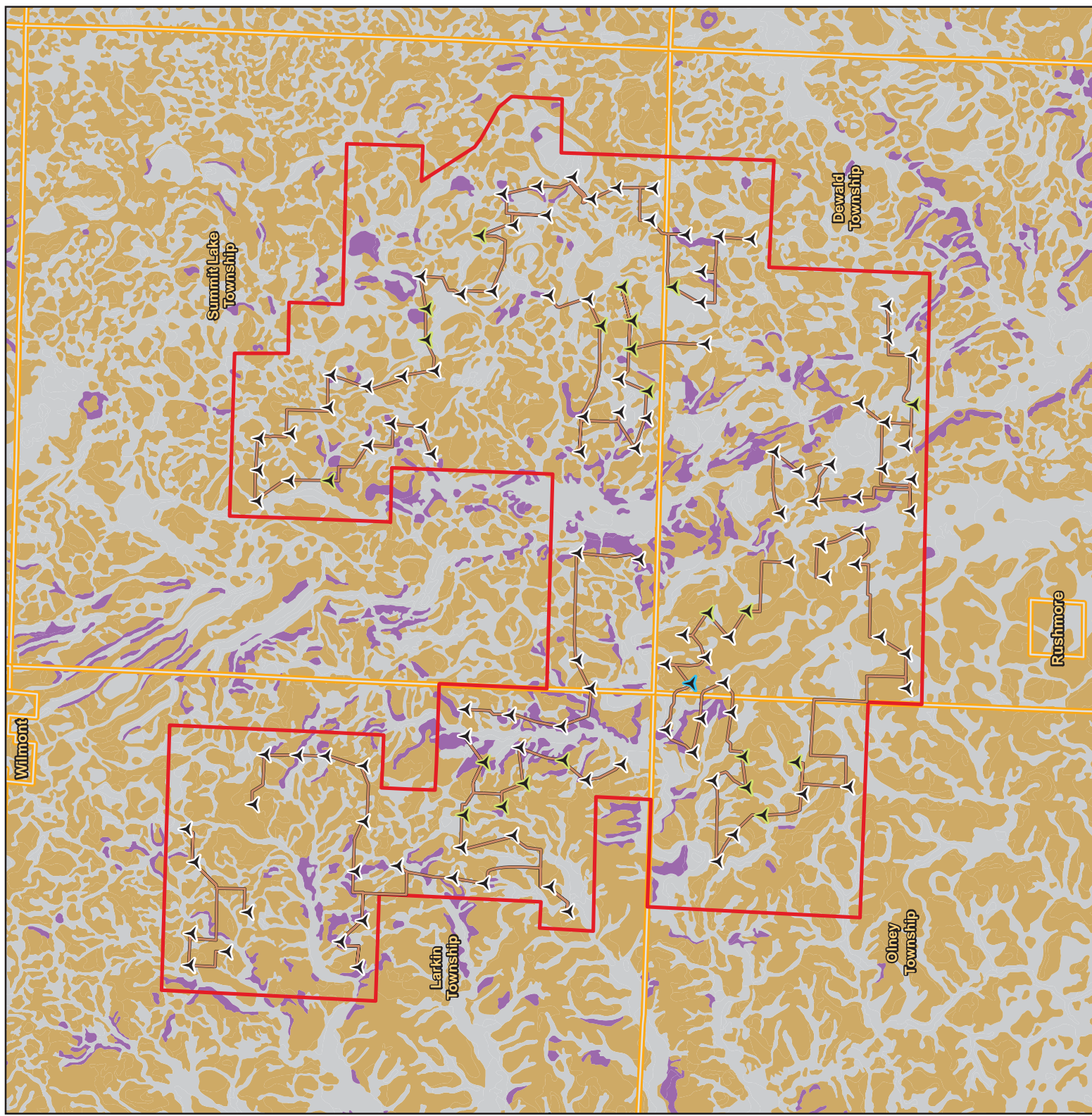
Figure 13 Soils

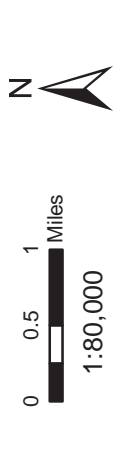
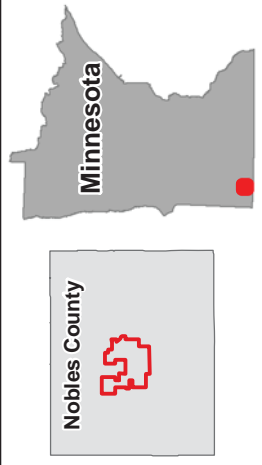
Nobles Repower Project

Nobles County, Minnesota



For Environmental Review Purposes Only





- Turbine (91m rotor diameter)
- Turbine (97m rotor diameter)
- Turbine (136m rotor diameter)
- Mining Operation
- Proposed Crane Path
- Project Boundary
- City/Township

Data Source: Xcel Energy, US Census, NRCS

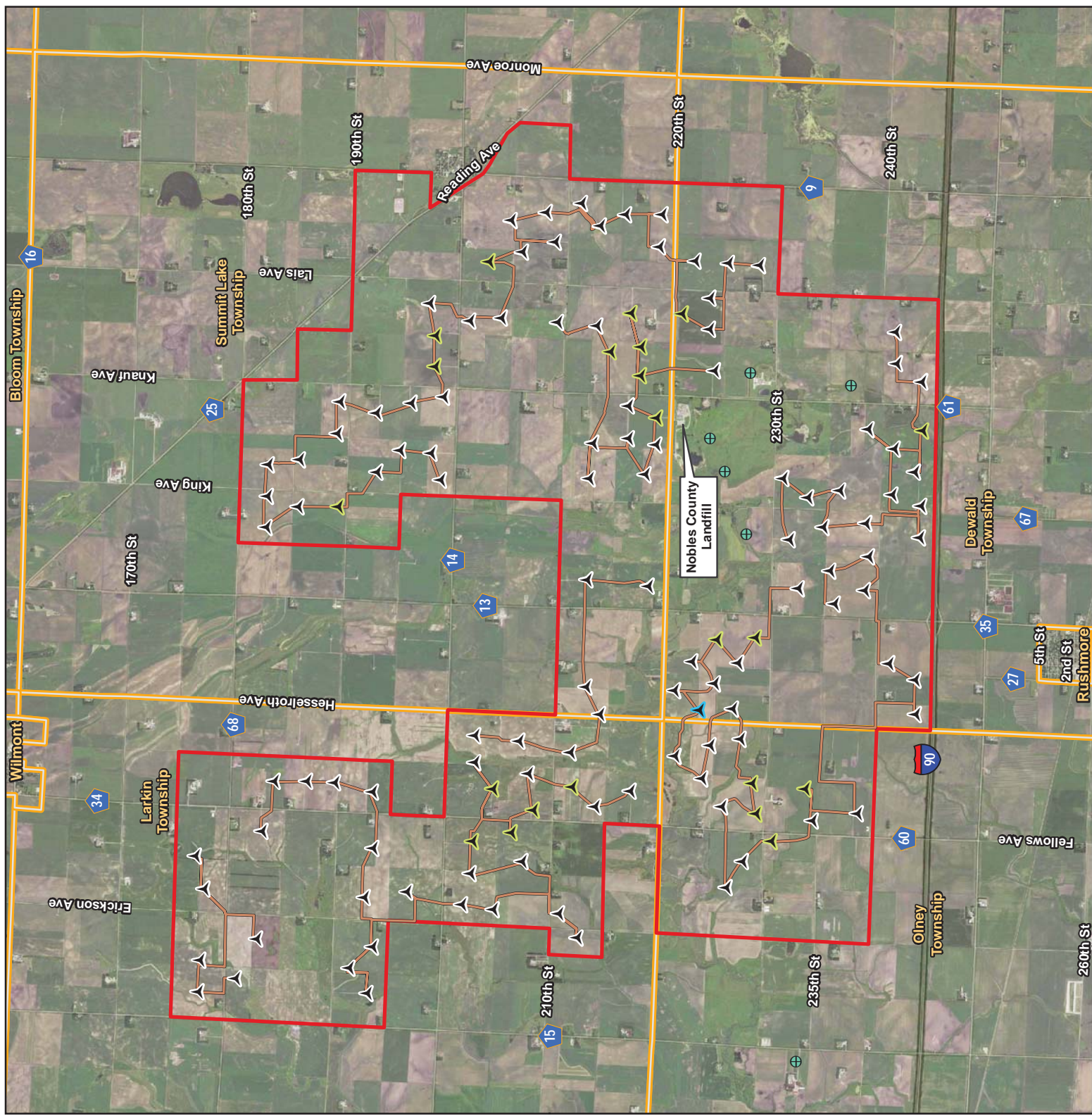
Figure 14 Geology

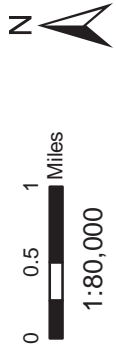
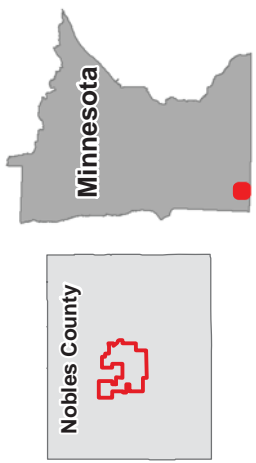
Nobles Repower Project

Nobles County, Minnesota



For Environmental Review Purposes Only





- Turbine (91m rotor diameter)
- Turbine (97m rotor diameter)
- Turbine (136m rotor diameter)
- Proposed Crane Path
- Project Boundary
- City/Township
- Impaired Stream
- Impaired Lake
- 24K Stream or Ditch
- Public Water Watercourse
- Public Water Basin/Wetland
- HUC 8 Watershed

Data Source: Xcel Energy, US Census, MDOT, USGS, MDNR, 2019 NAIP

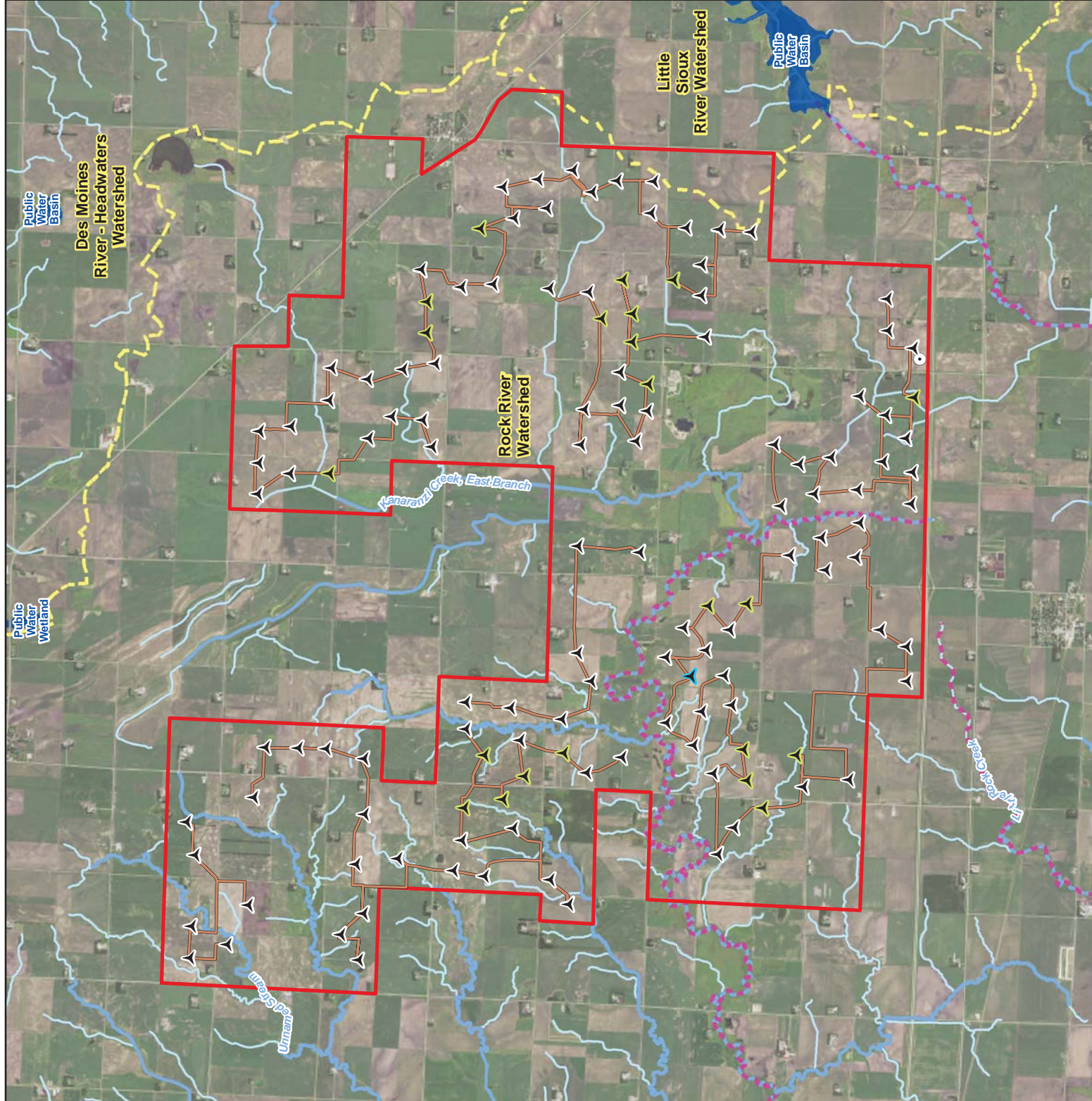
Figure 15 Surface Waters

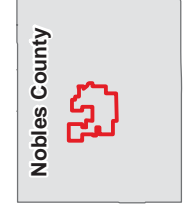
Nobles Repower Project

Nobles County, Minnesota



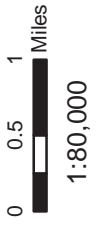
For Environmental Review Purposes Only





Minnesota

Nobles County



- Turbine (91m rotor diameter)
- Turbine (97m rotor diameter)
- Turbine (136m rotor diameter)
- Proposed Crane Path
- Project Boundary
- City/Township
- River/Stream
- 100 Year Floodplain

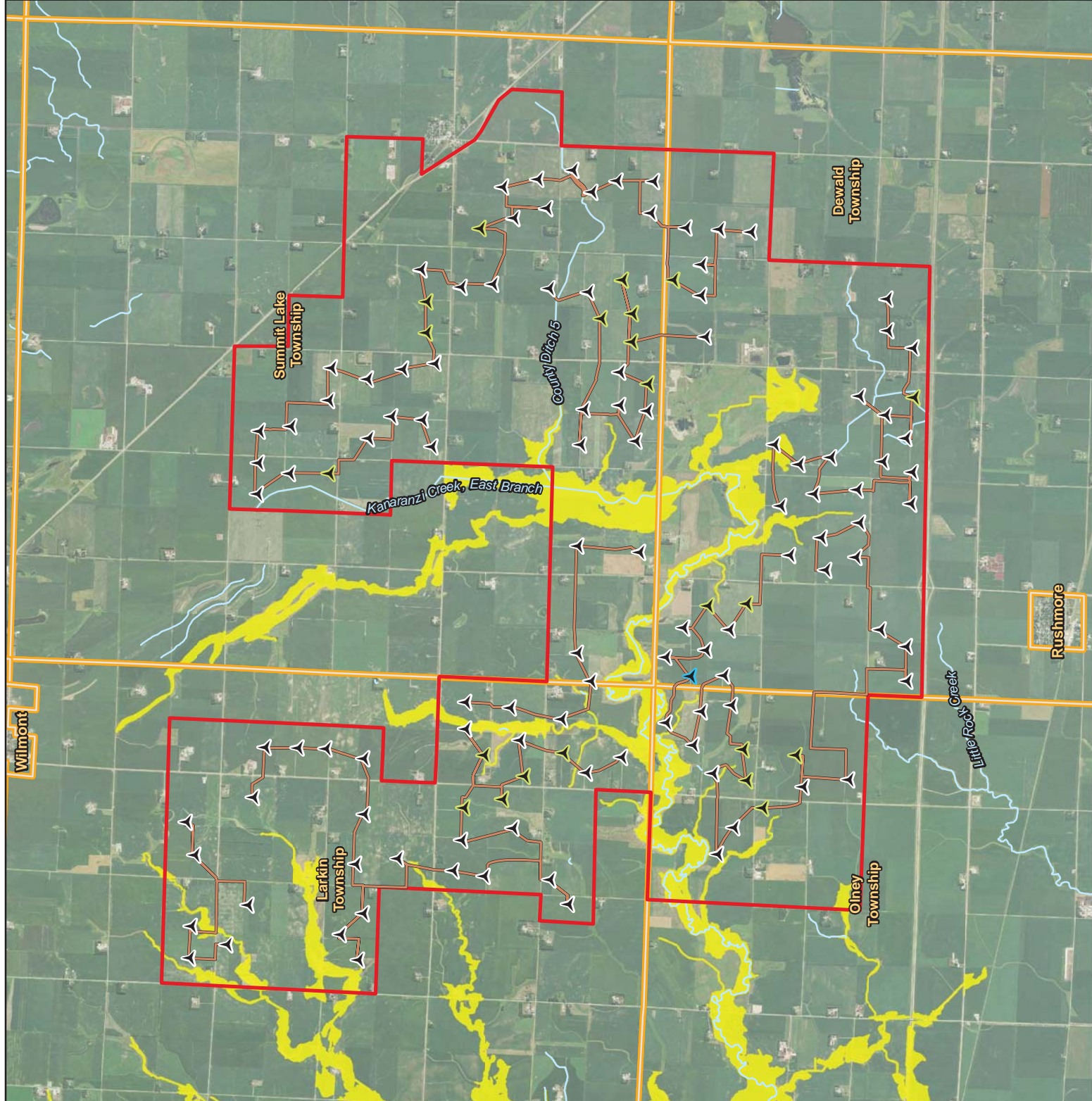
Data Source: Xcel Energy, US Census, MDT, FEMA, MDNR

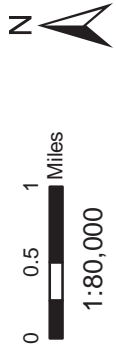
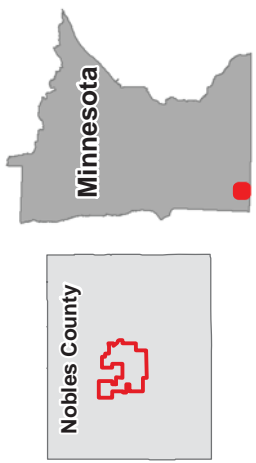
Figure 16 FEMA Floodplain

Nobles Repower Project
Nobles County, Minnesota



For Environmental Review Purposes Only

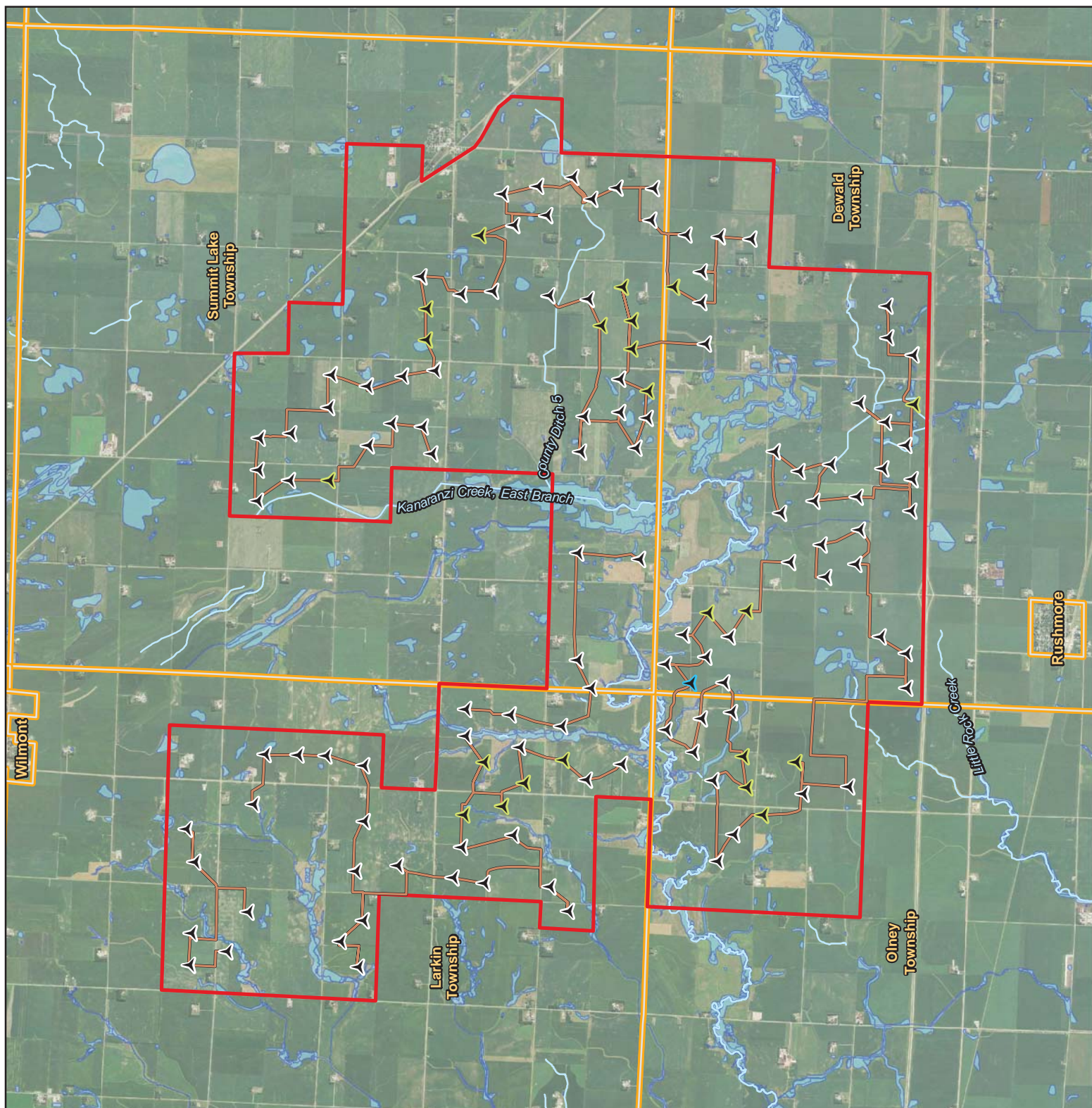


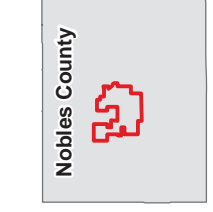


- Turbine (91m rotor diameter)
- Turbine (97m rotor diameter)
- Turbine (136m rotor diameter)
- Proposed Crane Path
- Project Boundary
- City/Township
- NWI (MNDNR Update)

Data Source: Xcel Energy, US Census, MDT, USGS, MNDNR

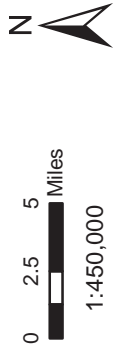
Figure 17 Wetlands Inventory Map Nobles Repower Project Nobles County, Minnesota





Minnesota

Nobles County



- Turbine
- Project Boundary
- 10-Mile Buffer
- 20-Mile Buffer

Data Source: Xcel Energy, ESRI, USGS, Lawrence Berkeley National Laboratory, American Wind Energy Association

Figure 18 Existing Turbine Locations Nobles Repower Project Nobles County, Minnesota



For Environmental Review Purposes Only

