

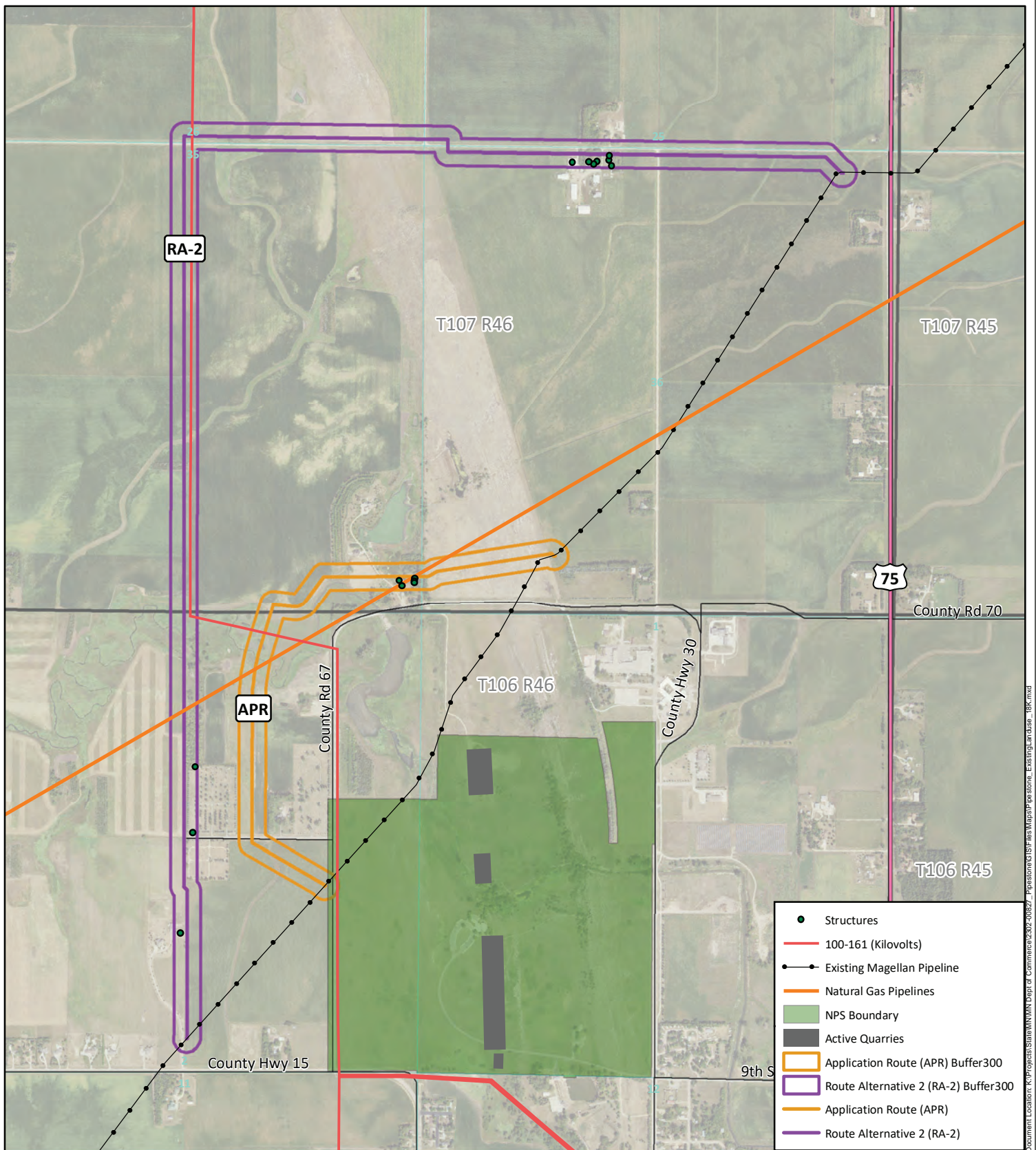


PIPESTONE PIPELINE REROUTE PROJECT

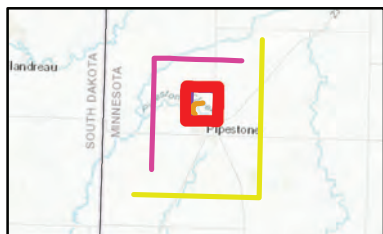
DOCKET NUMBER: PPL-23-109

APPLICANT: MAGELLAN PIPELINE COMPANY L.P.

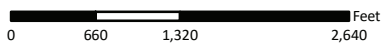
VOLUME II - APPENDIX A-1 FIGURE: EXISTING LAND USE



Document Location: K:\Projects\State\MN\Dept of Commerce\2302-00827 - Pipestone\GIS\Map\RA-2.mxd



Existing Land Use
Pipestone Pipeline Reroute Project
 Docket Number: PPL-23-109
 Pipestone, MN

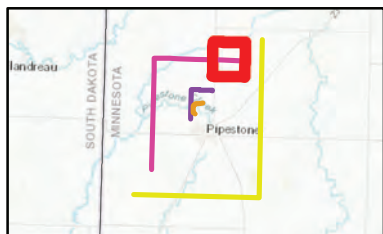
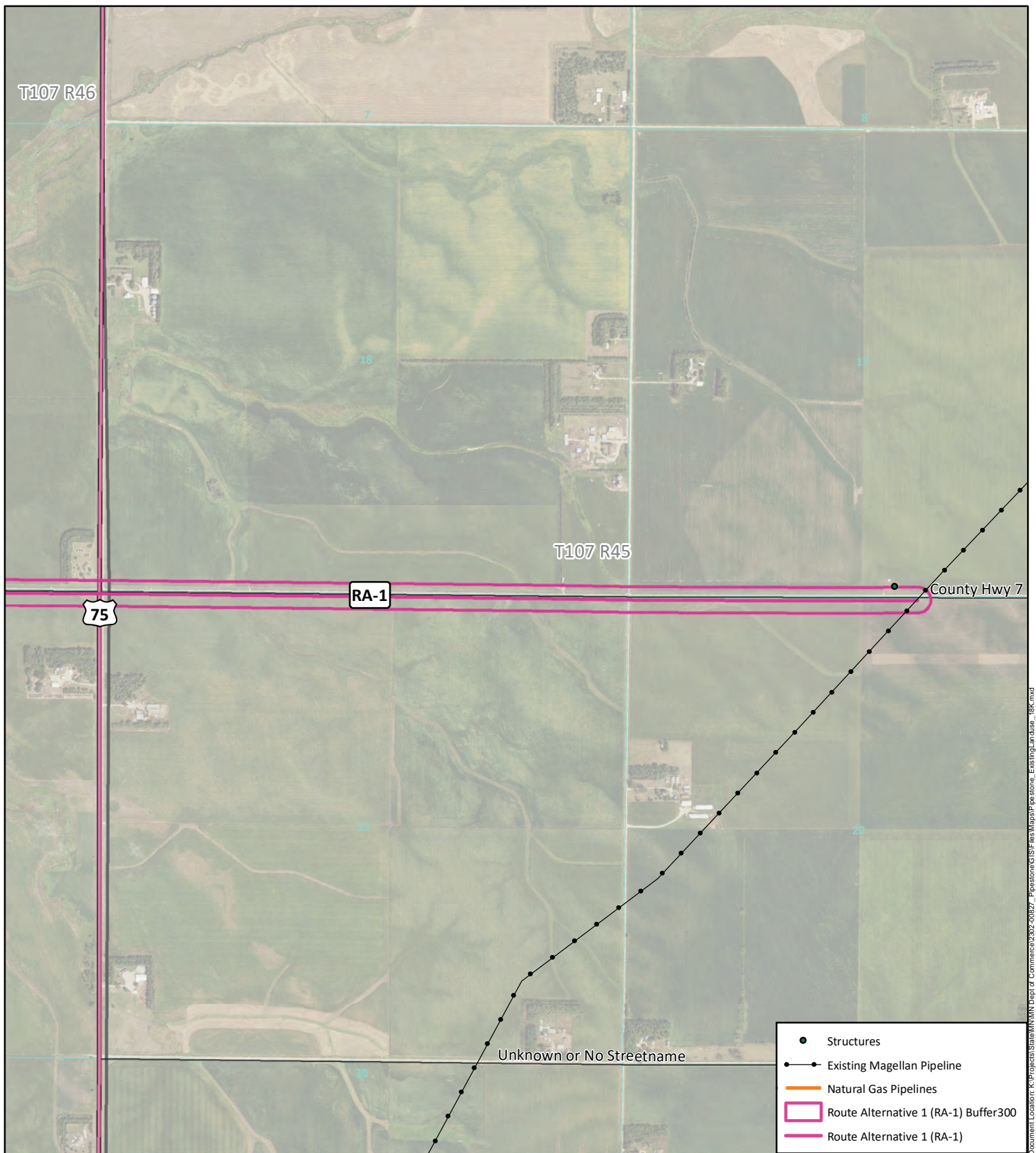


Data Source: US Fish and Wildlife,
 State of MN, NRCS, & KLJ

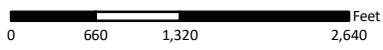


- Interstate
- US Highway
- State Highway
- Roads
- Township
- Sections

KLJ Project Number: 2302-00827
 Date Created: 2/13/2024
 Created By: jessicacallahan



Existing Land Use
 Pipestone Pipeline Reroute Project
 Docket Number: PPL-23-109
 Pipestone, MN



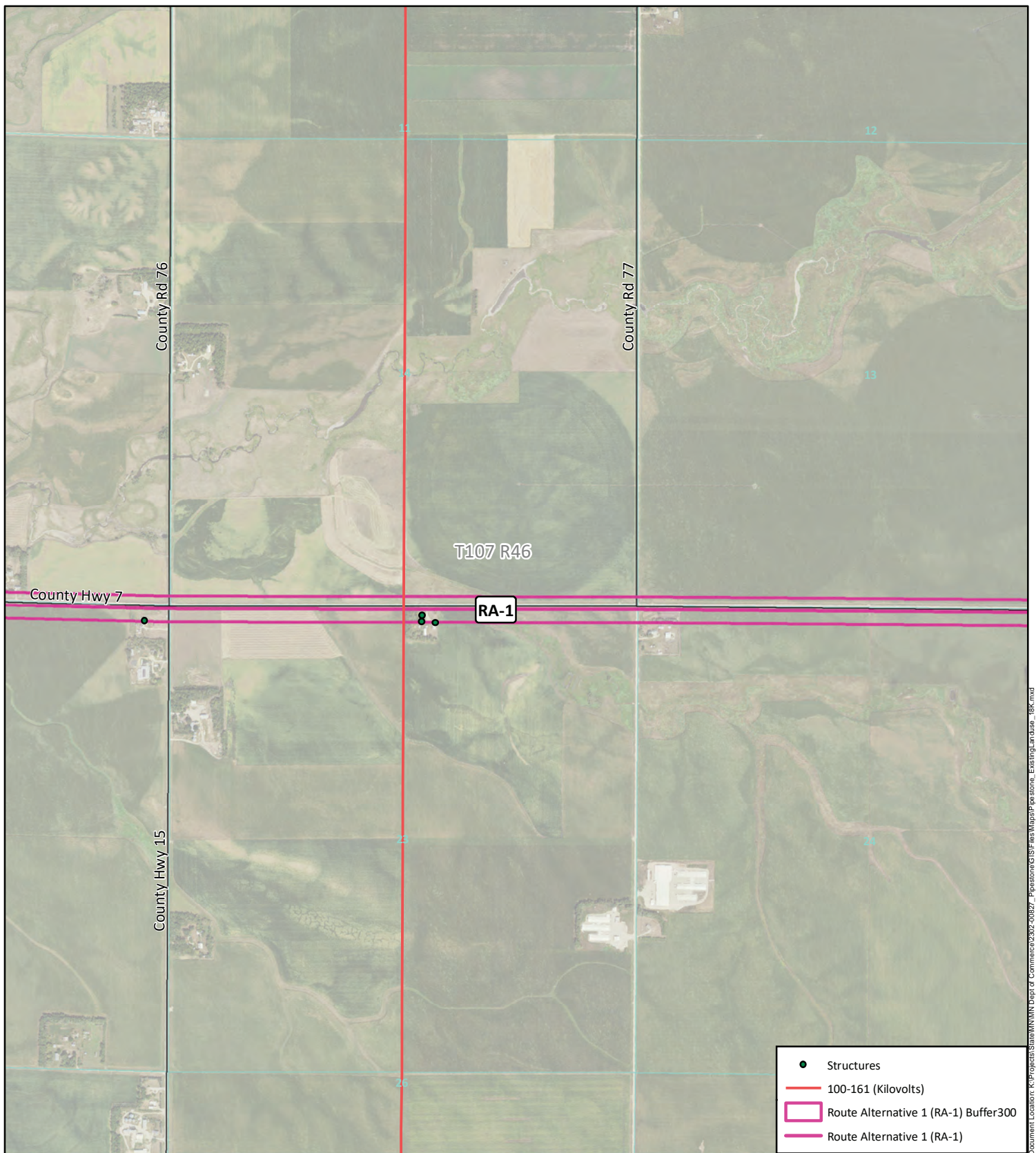
Data Source: US Fish and Wildlife,
 State of MN, NRCS, & KLJ



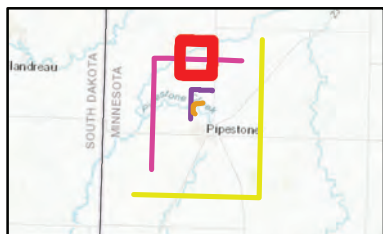
- Structures
- Existing Magellan Pipeline
- Natural Gas Pipelines
- Route Alternative 1 (RA-1) Buffer300
- Route Alternative 1 (RA-1)

- Interstate
- US Highway
- State Highway
- Roads
- Township
- Sections

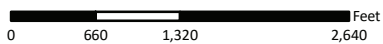
KLJ Project Number: 2302-00827
 Date Created: 2/13/2024
 Created By: jessicacallahan



Document Location: K:\Projects\State\MN\Dept of Commerce\2302-00827_Pipestone\GIS\Map\RA-1\RA-1.mxd



Existing Land Use
Pipestone Pipeline Reroute Project
 Docket Number: PPL-23-109
 Pipestone, MN

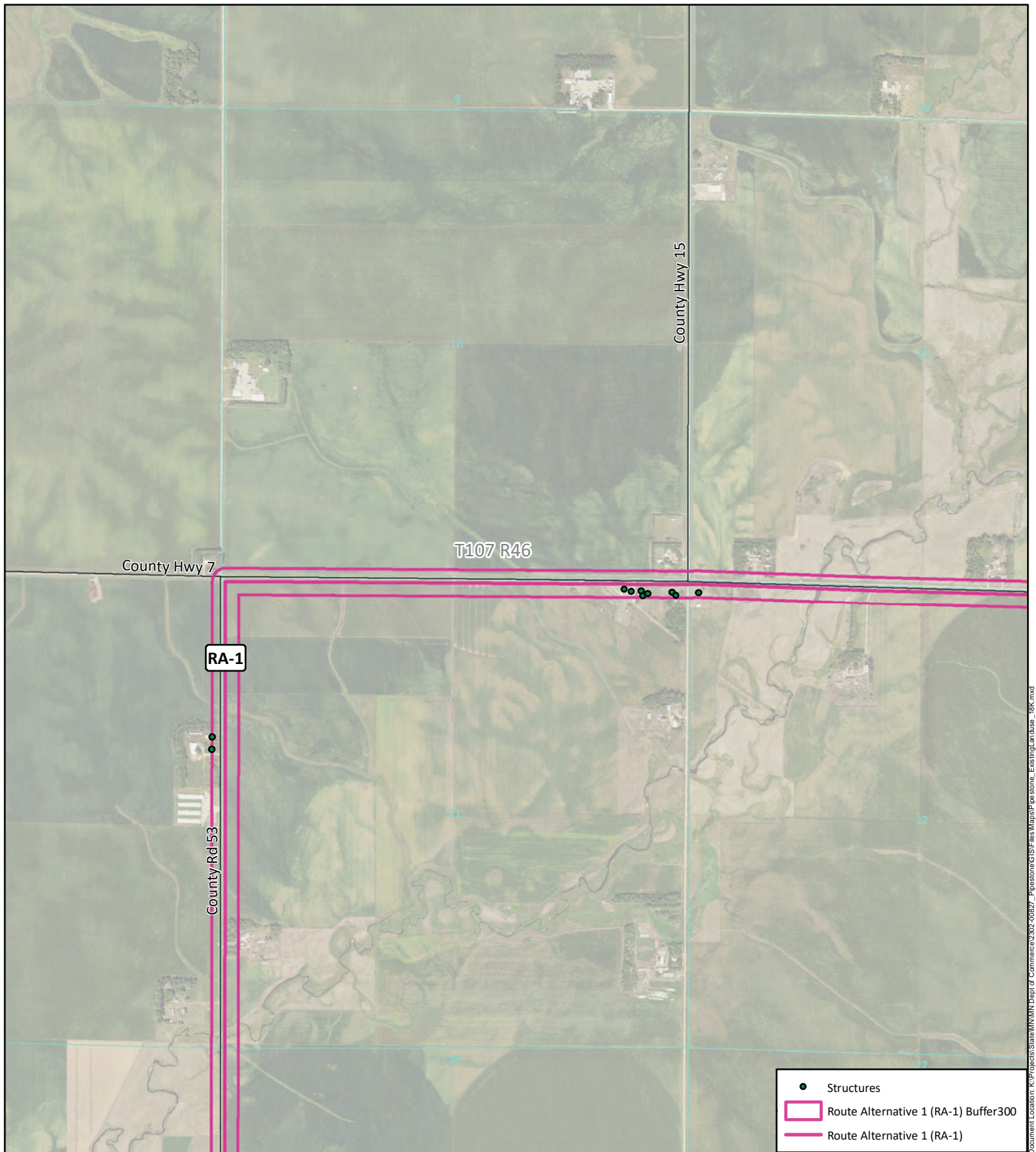


Data Source: US Fish and Wildlife,
 State of MN, NRCS, & KLJ

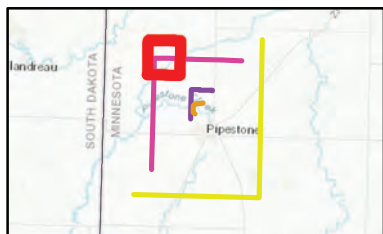


- Interstate
- US Highway
- State Highway
- Roads
- Township
- Sections

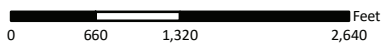
KLJ Project Number: 2302-00827
 Date Created: 2/13/2024
 Created By: jessicacallahan



Document Location: K:\Projects\State\MN\Dept of Commerce\2302-00827 - Pipestone of SF Files\Map\Pipestone_ExistingLandUse_18K.mxd



Existing Land Use
Pipestone Pipeline Reroute Project
 Docket Number: PPL-23-109
 Pipestone, MN

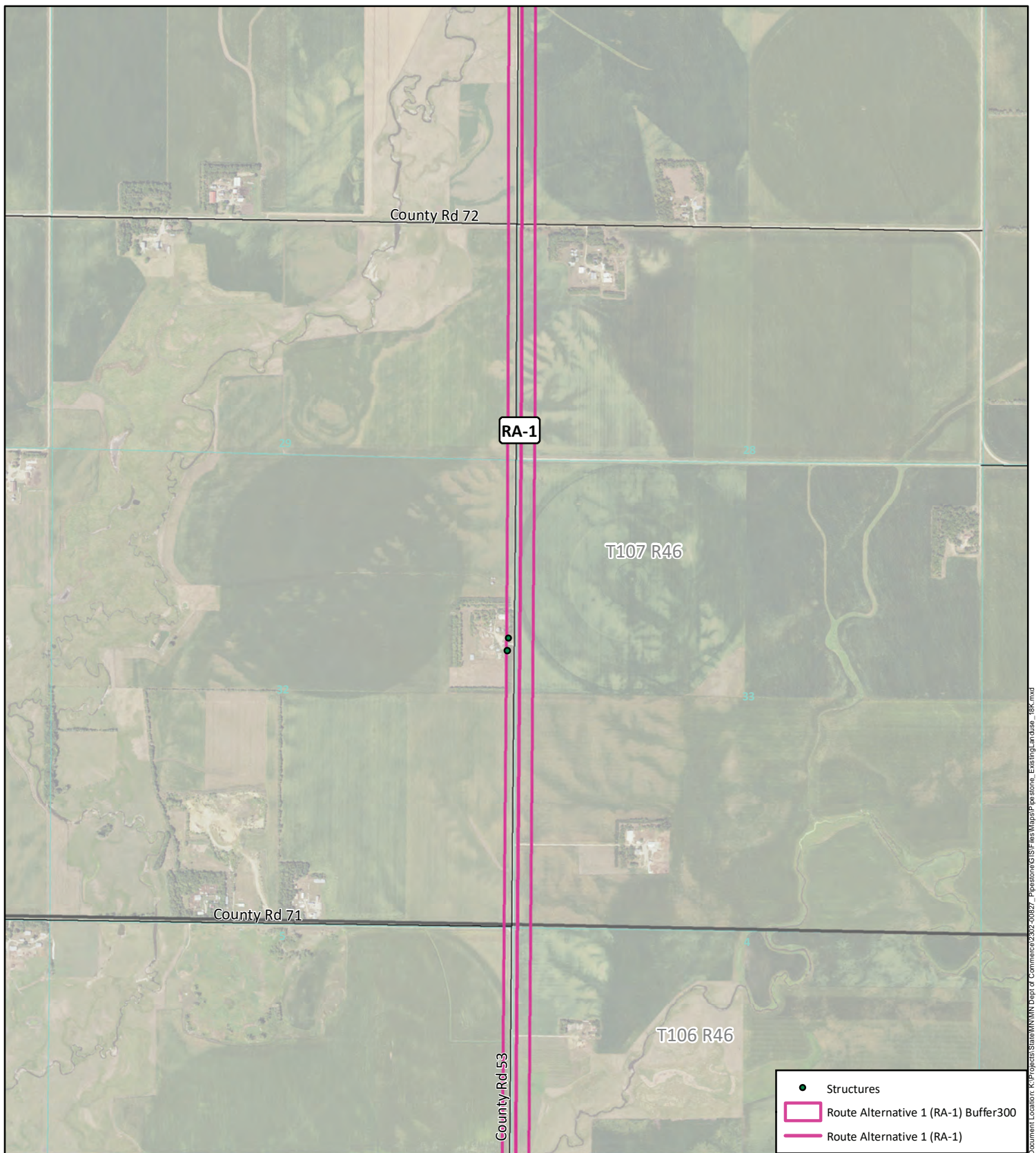


Data Source: US Fish and Wildlife,
 State of MN, NRCS, & KLJ

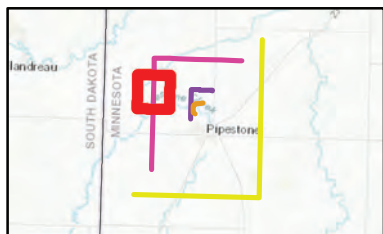


- Interstate
- US Highway
- State Highway
- Roads
- Township
- Sections

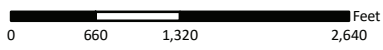
KLJ Project Number: 2302-00827
 Date Created: 2/13/2024
 Created By: jessicacallahan



Document Location: K:\Projects\State\MN\Dept of Commerce\2302-00827 - Pipestone\GIS\Files\Map\RA-1\RA-1.mxd



Existing Land Use
 Pipestone Pipeline Reroute Project
 Docket Number: PPL-23-109
 Pipestone, MN



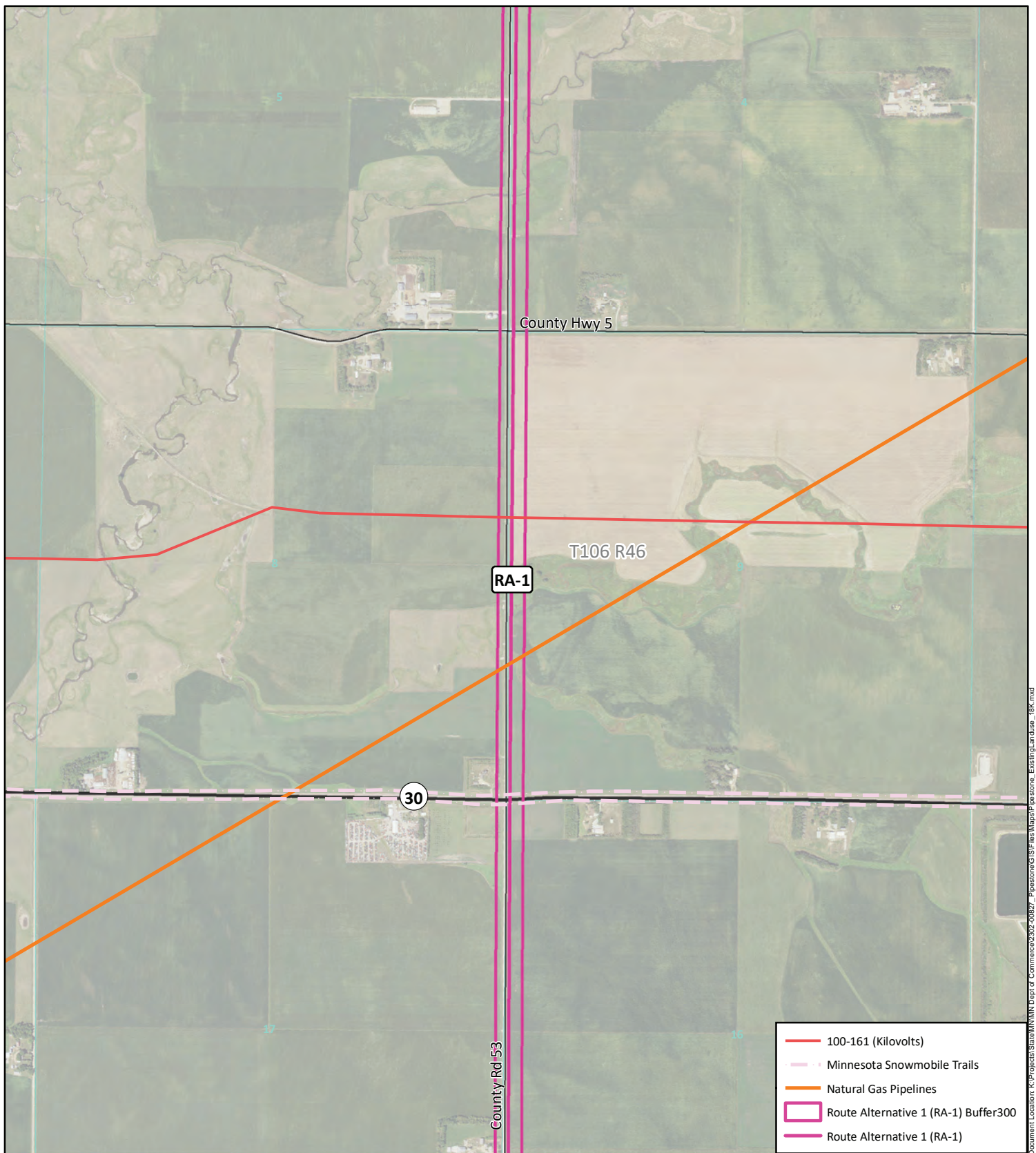
Data Source: US Fish and Wildlife,
 State of MN, NRCS, & KLJ



- Structures
- Route Alternative 1 (RA-1) Buffer300
- Route Alternative 1 (RA-1)

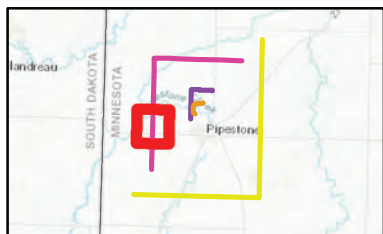
- Interstate
- US Highway
- State Highway
- Roads
- Township
- Sections

KLJ Project Number: 2302-00827
 Date Created: 2/13/2024
 Created By: jessicacallahan



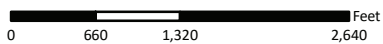
Document Location: K:\Projects\State\MN\Dept of Commerce\2302-00827 - Pipestone\GIS\Map\RA-1\RA-1.mxd

- 100-161 (Kilovolts)
- - - Minnesota Snowmobile Trails
- Natural Gas Pipelines
- Route Alternative 1 (RA-1) Buffer300
- Route Alternative 1 (RA-1)



Existing Land Use
 Pipestone Pipeline Reroute Project
 Docket Number: PPL-23-109
 Pipestone, MN

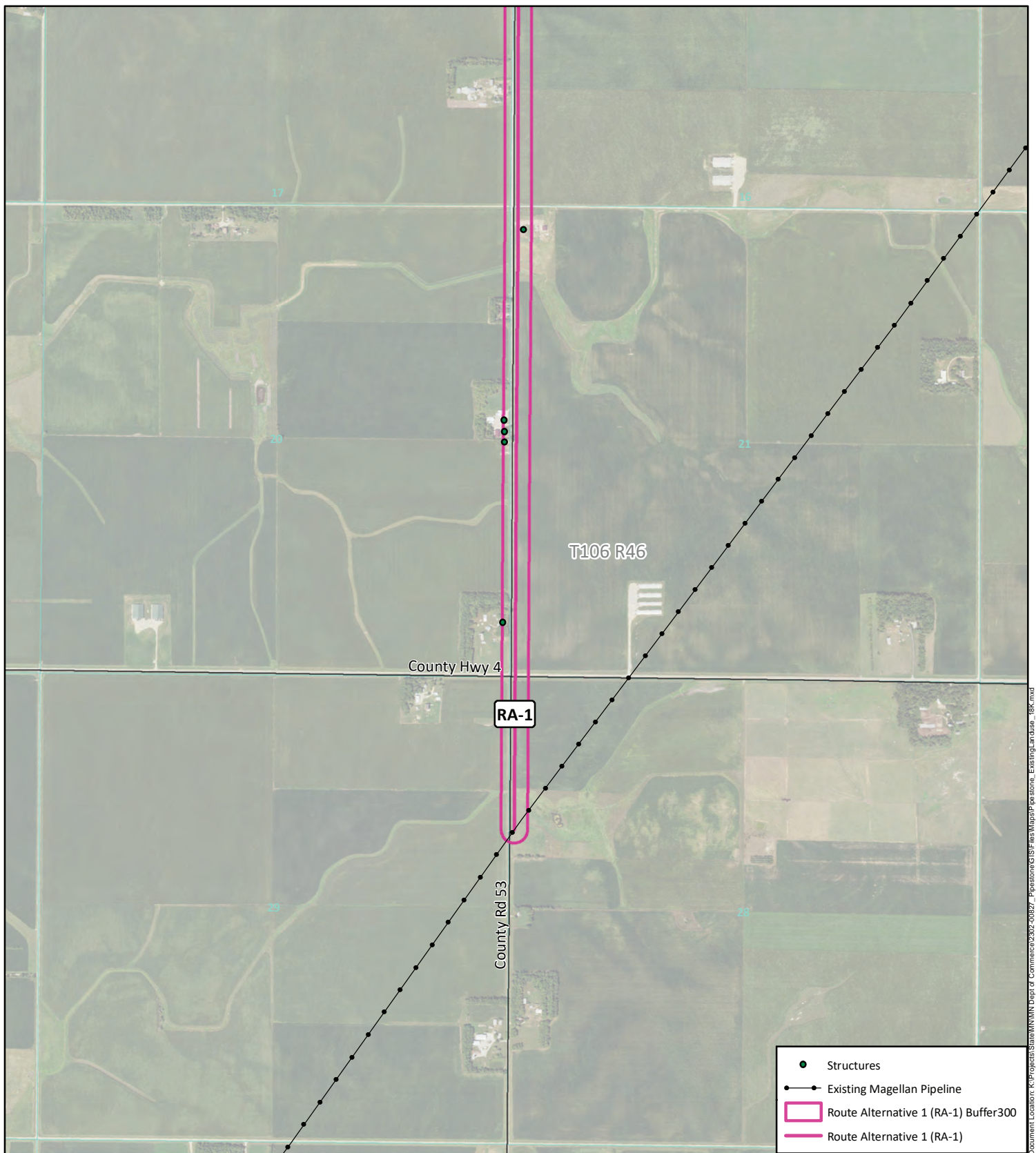
- Interstate
- US Highway
- State Highway
- Roads
- Township
- Sections



Data Source: US Fish and Wildlife,
 State of MN, NRCS, & KLJ

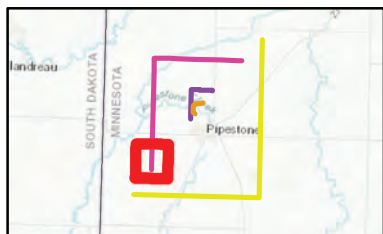


KLJ Project Number: 2302-00827
 Date Created: 2/13/2024
 Created By: jessicacallahan

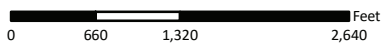


Document Location: K:\Projects\State\MN\Dept of Commerce\2302-00827 - Pipestone\GIS\Map\RA-1\RA-1_ExistingLandUse_18K.mxd

- Structures
- Existing Magellan Pipeline
- Route Alternative 1 (RA-1) Buffer300
- Route Alternative 1 (RA-1)



Existing Land Use
 Pipestone Pipeline Reroute Project
 Docket Number: PPL-23-109
 Pipestone, MN

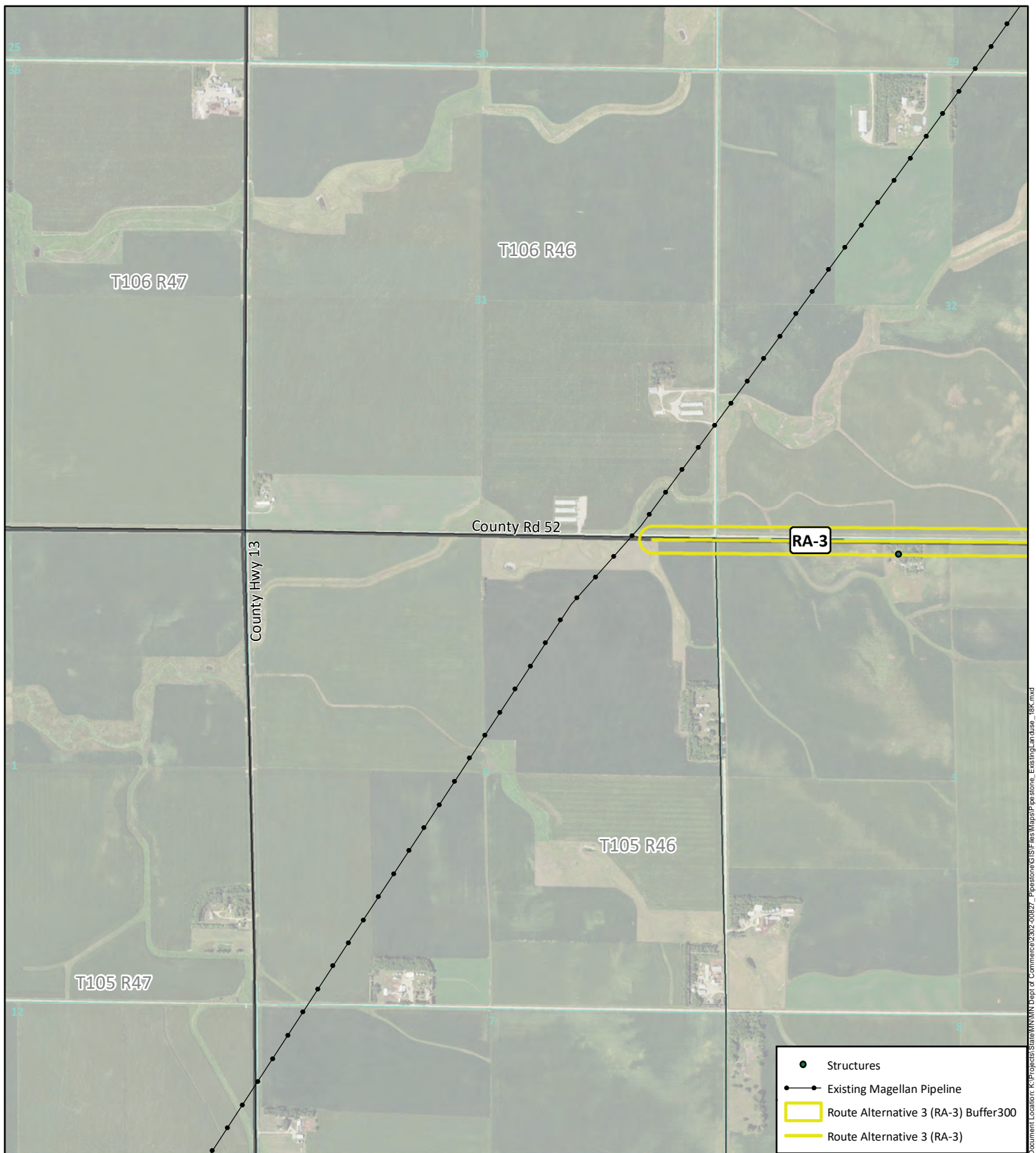


Data Source: US Fish and Wildlife,
 State of MN, NRCS, & KLJ

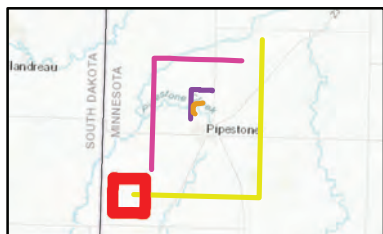


- Interstate
- US Highway
- State Highway
- Roads
- Township
- Sections

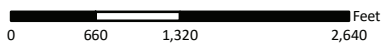
KLJ Project Number: 2302-00827
 Date Created: 2/13/2024
 Created By: jessicacallahan



Document Location: K:\Projects\State\MN\Dept of Commerce\2302-00827 - Pipestone of SF Files\Map\Pipestone_ExistingLandUse_18K.mxd



Existing Land Use
 Pipestone Pipeline Reroute Project
 Docket Number: PPL-23-109
 Pipestone, MN



Data Source: US Fish and Wildlife,
 State of MN, NRCS, & KLJ



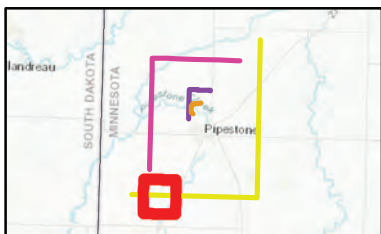
- Interstate
- US Highway
- State Highway
- Roads
- Township
- Sections

KLJ Project Number: 2302-00827
 Date Created: 2/13/2024
 Created By: jessicacallahan

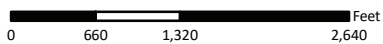


Document Location: K:\Projects\State\MN\Dept of Commerce\2302-00827 - Pipestone\GIS\Files\Map\RA-3\RA-3.mxd

- - - Minnesota Snowmobile Trails
- ● - Existing Magellan Pipeline
- Route Alternative 3 (RA-3) Buffer300
- Route Alternative 3 (RA-3)



Existing Land Use
Pipestone Pipeline Reroute Project
 Docket Number: PPL-23-109
 Pipestone, MN

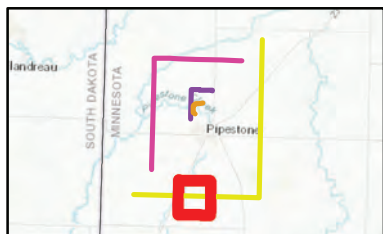
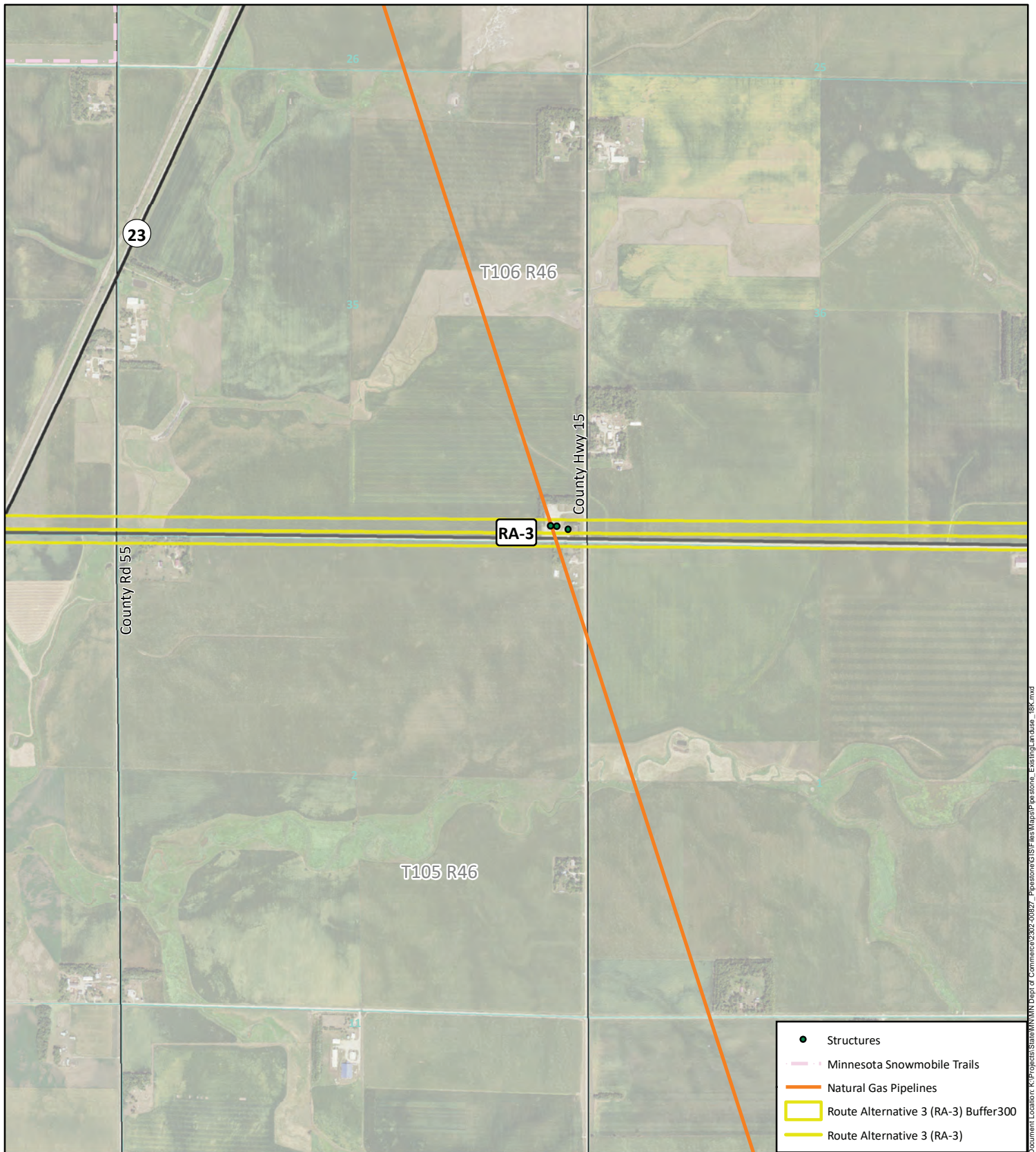


Data Source: US Fish and Wildlife,
 State of MN, NRCS, & KLJ

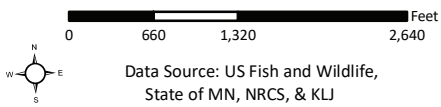


- Interstate
- US Highway
- State Highway
- Roads
- Township
- Sections

KLJ Project Number: 2302-00827
 Date Created: 2/13/2024
 Created By: jessicacallahan



Existing Land Use
 Pipestone Pipeline Reroute Project
 Docket Number: PPL-23-109
 Pipestone, MN



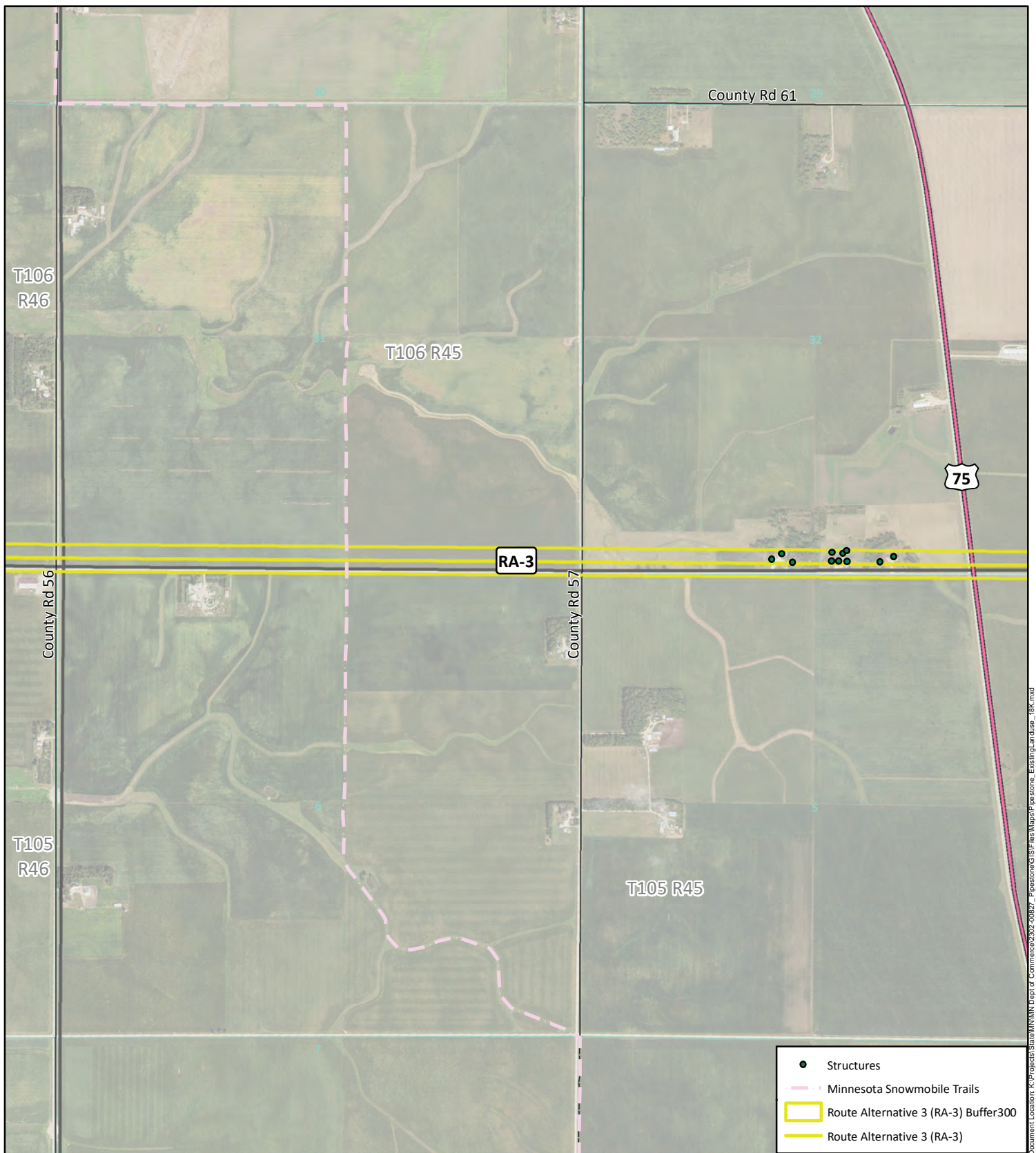
Data Source: US Fish and Wildlife,
 State of MN, NRCS, & KLJ



- Interstate
- US Highway
- State Highway
- Roads
- Township
- Sections

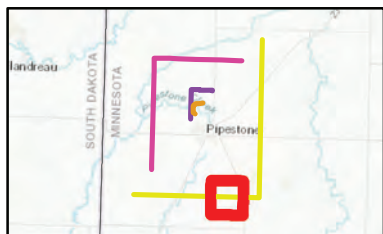
KLJ Project Number: 2302-00827
 Date Created: 2/13/2024
 Created By: jessicacallahan

Document Location: K:\Projects\State\MN\Dept of Commerce\2302-00827_Pipestone\GIS\Files\Map\RA-3\RA-3.mxd

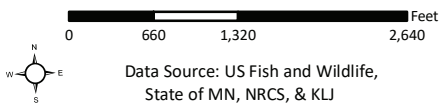


Document Location: K:\Projects\State\Winn\Dept of Commerce\2302-00827 - Pipestone of SF Files\Map\Pipestone_ExistingLandUse_18K.mxd

- Structures
- Minnesota Snowmobile Trails
- Route Alternative 3 (RA-3) Buffer300
- Route Alternative 3 (RA-3)



Existing Land Use
 Pipestone Pipeline Reroute Project
 Docket Number: PPL-23-109
 Pipestone, MN

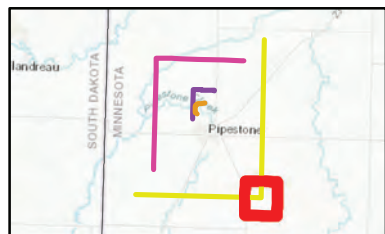
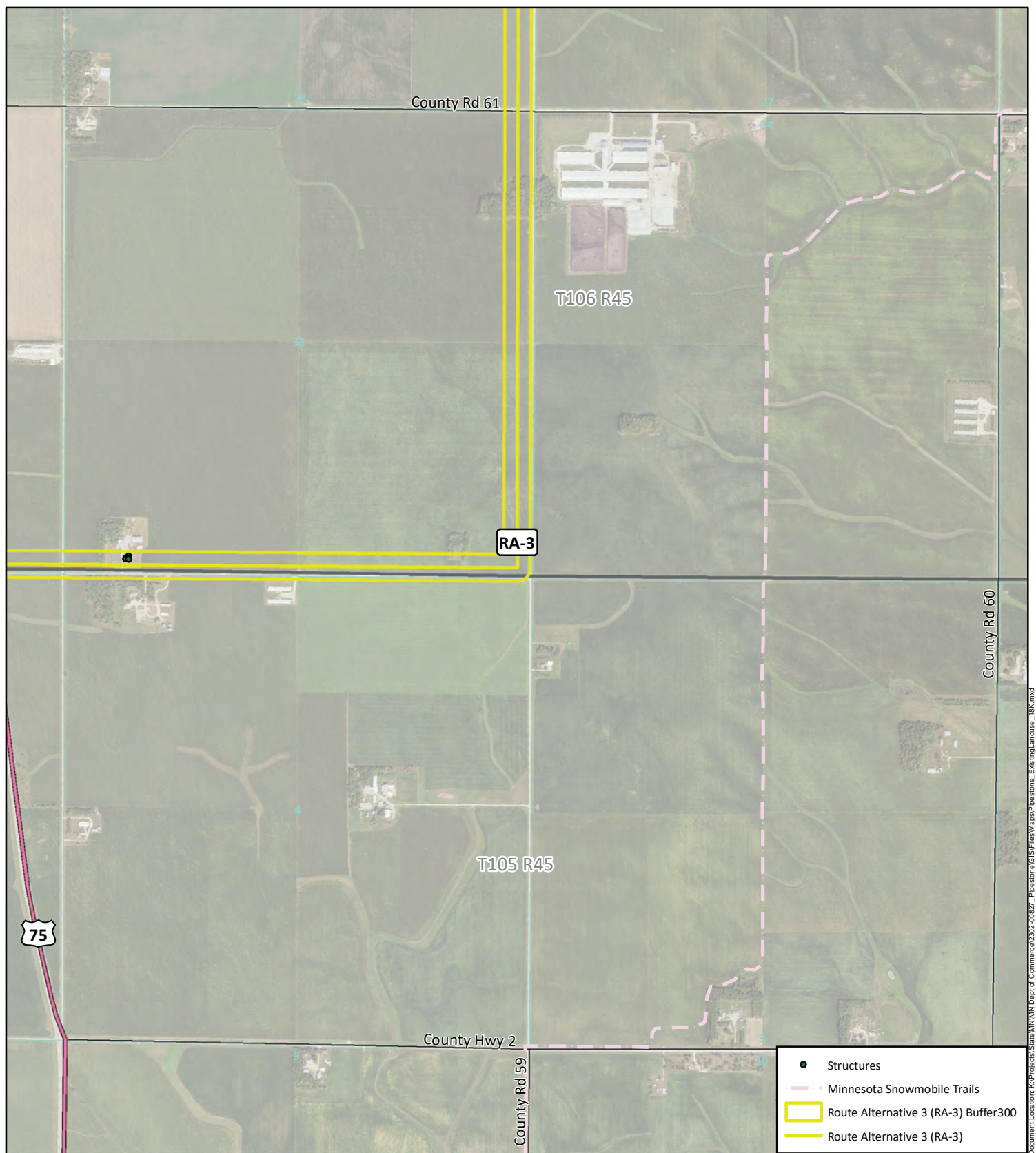


Data Source: US Fish and Wildlife,
 State of MN, NRCS, & KLJ

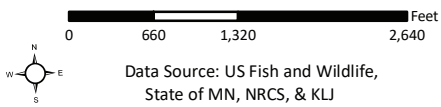


- Interstate
- US Highway
- State Highway
- Roads
- Township
- Sections

KLI Project Number: 2302-00827
 Date Created: 2/13/2024
 Created By: jessicacallahan



Existing Land Use
 Pipestone Pipeline Reroute Project
 Docket Number: PPL-23-109
 Pipestone, MN

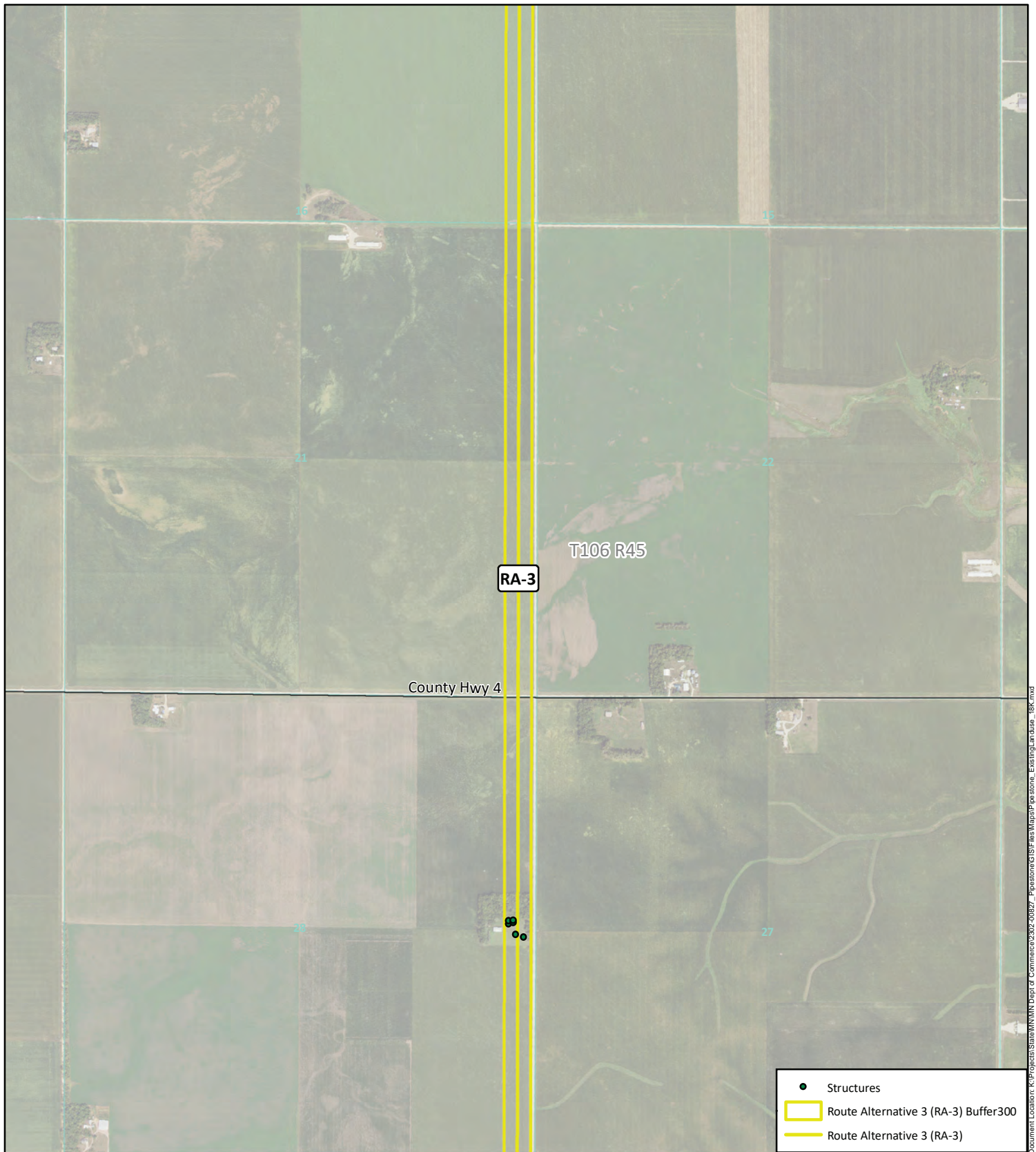


- Structures
- Minnesota Snowmobile Trails
- Route Alternative 3 (RA-3) Buffer300
- Route Alternative 3 (RA-3)

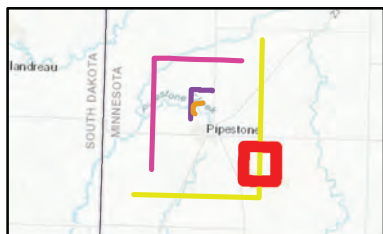
- Interstate
- US Highway
- State Highway
- Roads
- Township
- Sections

KLJ Project Number: 2302-00827
 Date Created: 2/13/2024
 Created By: jessicacallahan

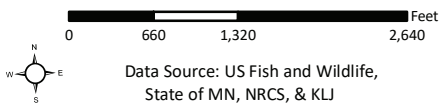




Document Location: K:\Projects\State\MN\Dept of Commerce\2302-00827 - Pipestone of SF Files\Map\Pipestone_ExistingLandUse_18R.mxd



Existing Land Use
 Pipestone Pipeline Reroute Project
 Docket Number: PPL-23-109
 Pipestone, MN

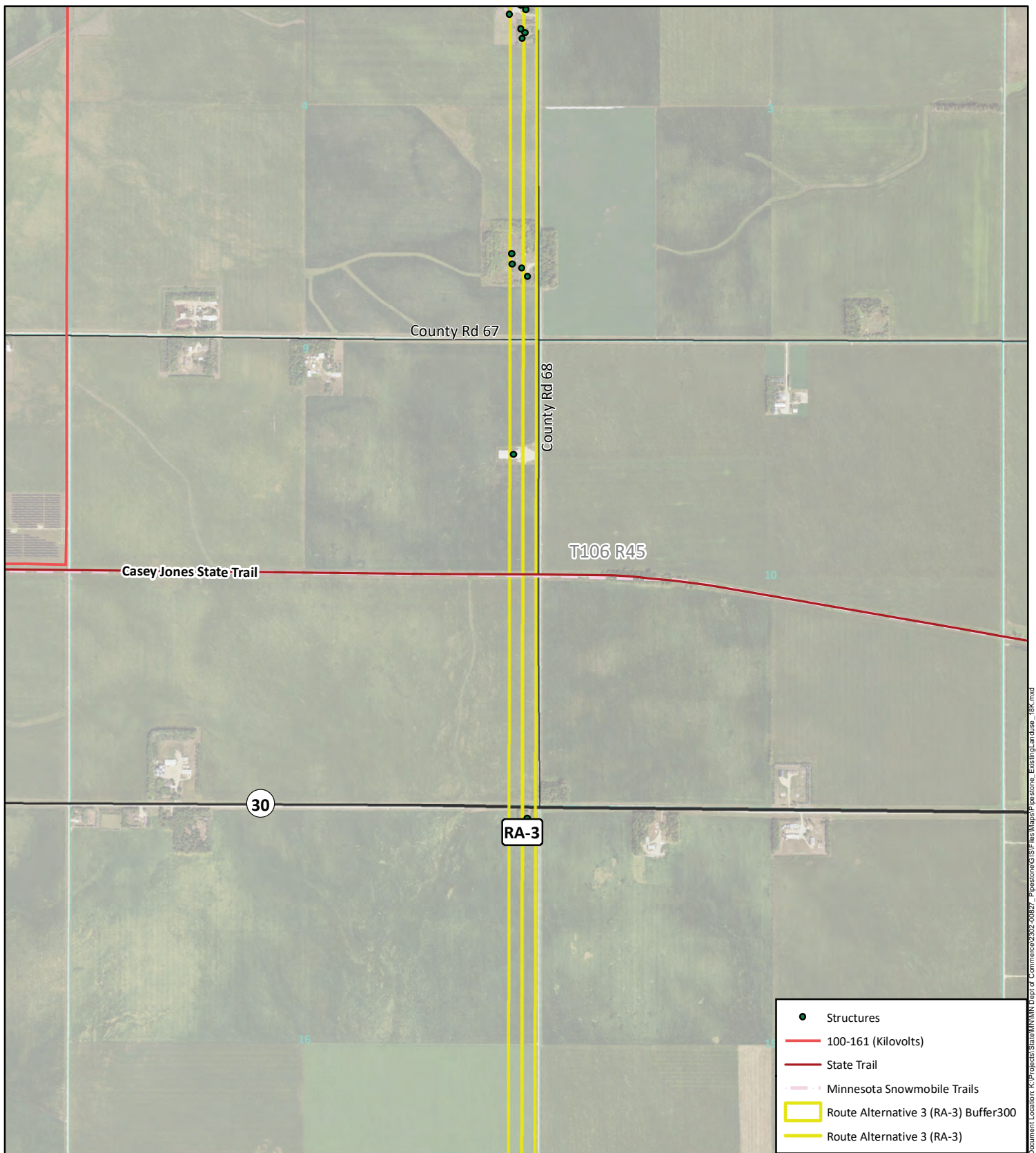


- Structures
- Route Alternative 3 (RA-3) Buffer300
- Route Alternative 3 (RA-3)

- Interstate
- US Highway
- State Highway
- Roads
- Township
- Sections

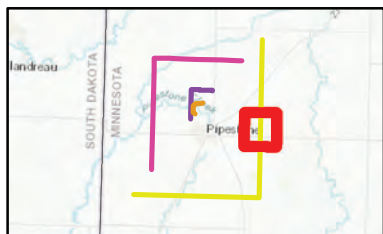
KLJ Project Number: 2302-00827
 Date Created: 2/13/2024
 Created By: jessicacallahan



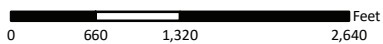


Document Location: K:\Projects\State\MN\Dept of Commerce\2302-00827 - Pipastone of SF Files\Map\RA-3\stone_ExistingLandUse_18K.mxd

- Structures
- 100-161 (Kilovolts)
- State Trail
- Minnesota Snowmobile Trails
- Route Alternative 3 (RA-3) Buffer300
- Route Alternative 3 (RA-3)



Existing Land Use
 Pipestone Pipeline Reroute Project
 Docket Number: PPL-23-109
 Pipestone, MN

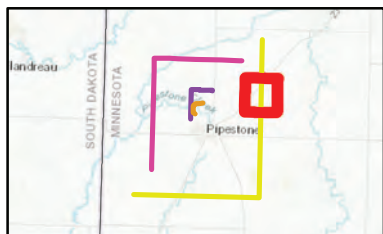
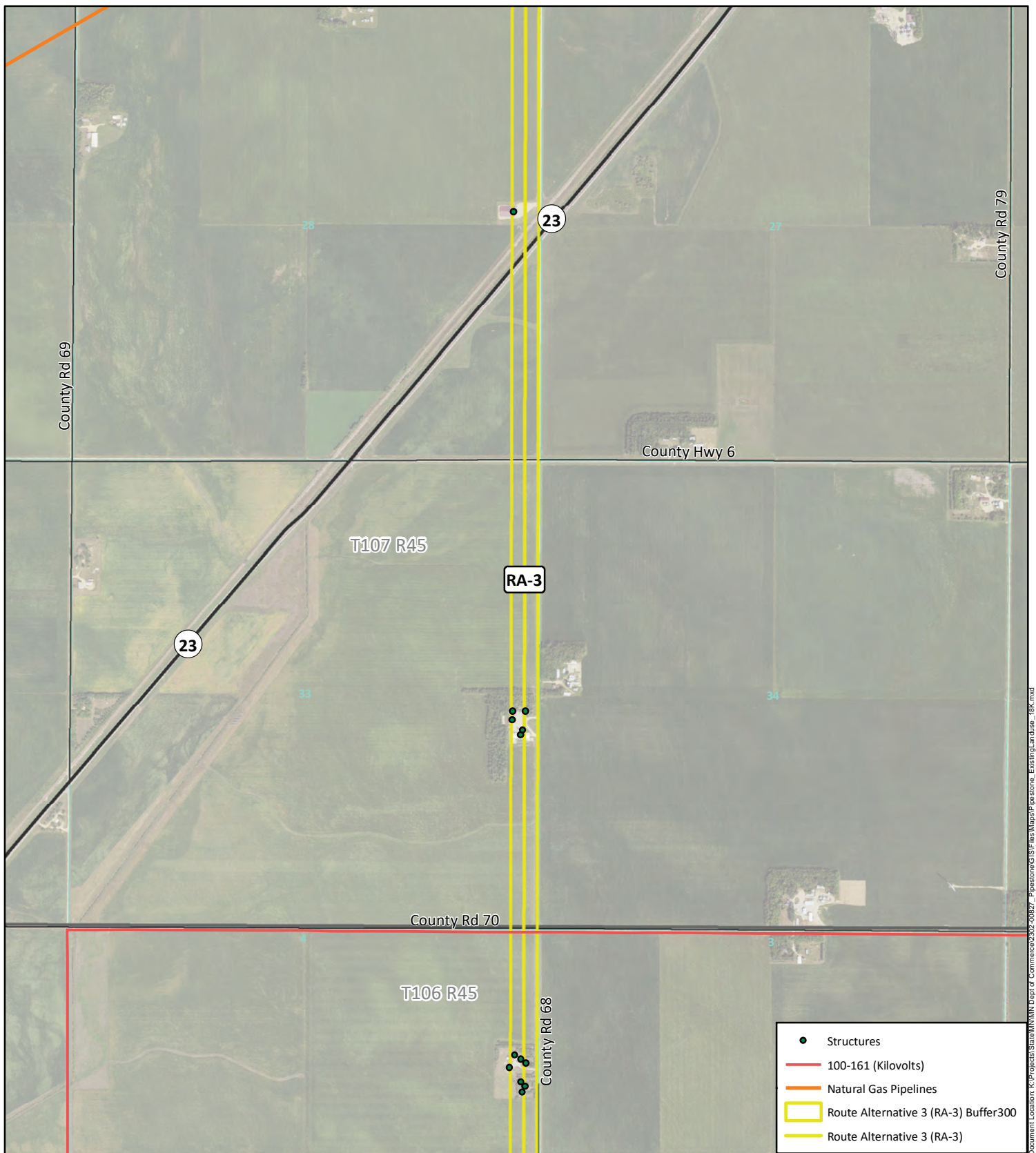


Data Source: US Fish and Wildlife,
 State of MN, NRCS, & KLJ

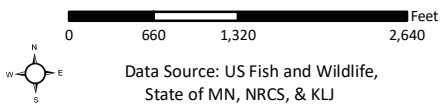


- Interstate
- US Highway
- State Highway
- Roads
- Township
- Sections

KLJ Project Number: 2302-00827
 Date Created: 2/13/2024
 Created By: jessicacallahan



Existing Land Use
Pipestone Pipeline Reroute Project
 Docket Number: PPL-23-109
 Pipestone, MN



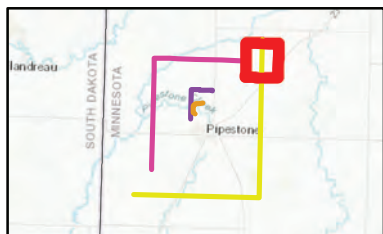
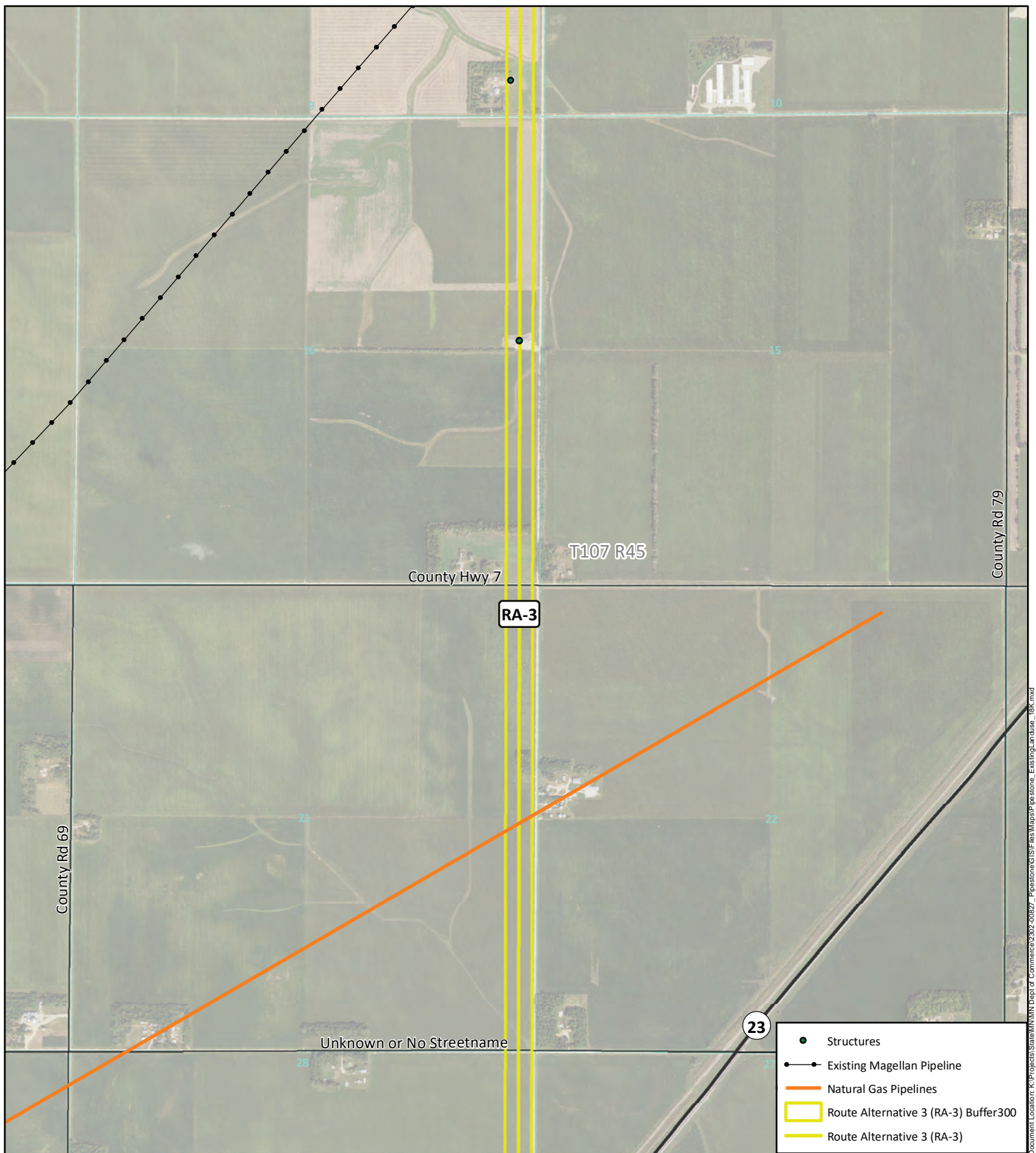
Data Source: US Fish and Wildlife,
 State of MN, NRCS, & KLJ



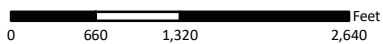
- Interstate
- US Highway
- State Highway
- Roads
- Township
- Sections

KLJ Project Number: 2302-00827
Date Created: 2/13/2024
Created By: jessicacallahan

Document Location: K:\Projects\State\MN\Dept of Commerce\2302-00827_Pipestone\GIS\Mapa\Pipestone_ExistingLandUse_18K.mxd



Existing Land Use
 Pipestone Pipeline Reroute Project
 Docket Number: PPL-23-109
 Pipestone, MN

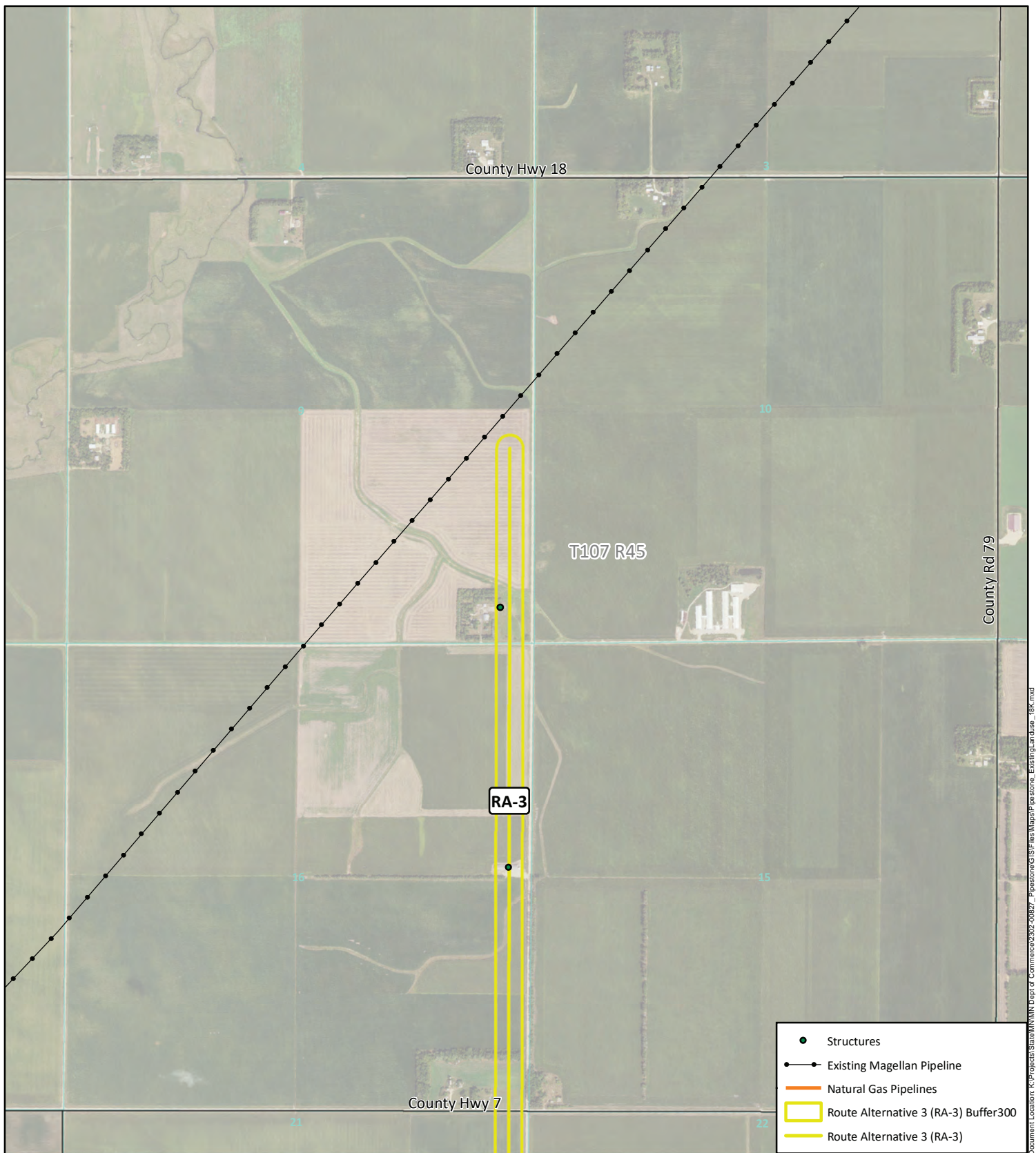


Data Source: US Fish and Wildlife,
 State of MN, NRCS, & KLJ

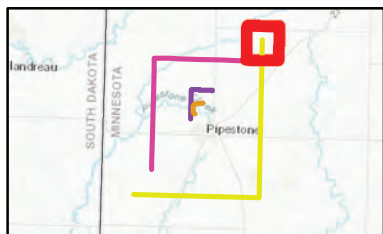


- Interstate
- US Highway
- State Highway
- Roads
- Township
- Sections

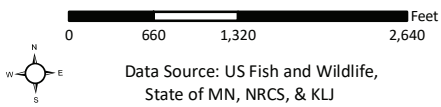
KLJ Project Number: 2302-00827
 Date Created: 2/13/2024
 Created By: jessicacallahan



- Structures
- Existing Magellan Pipeline
- Natural Gas Pipelines
- Route Alternative 3 (RA-3) Buffer300
- Route Alternative 3 (RA-3)



Existing Land Use
 Pipestone Pipeline Reroute Project
 Docket Number: PPL-23-109
 Pipestone, MN



- Interstate
- US Highway
- State Highway
- Roads
- Township
- Sections

KLJ Project Number: 2302-00827
 Date Created: 2/13/2024
 Created By: jessicacallahan

Document Location: K:\Projects\State\MN\Dept of Commerce\2302-00827 - Pipestone of SF Files\Map\RA-3\stone_ExistingLandUse_18K.mxd