

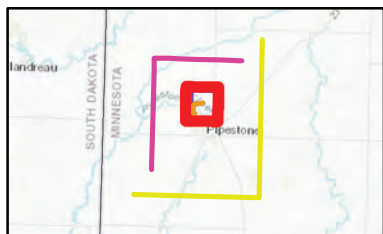
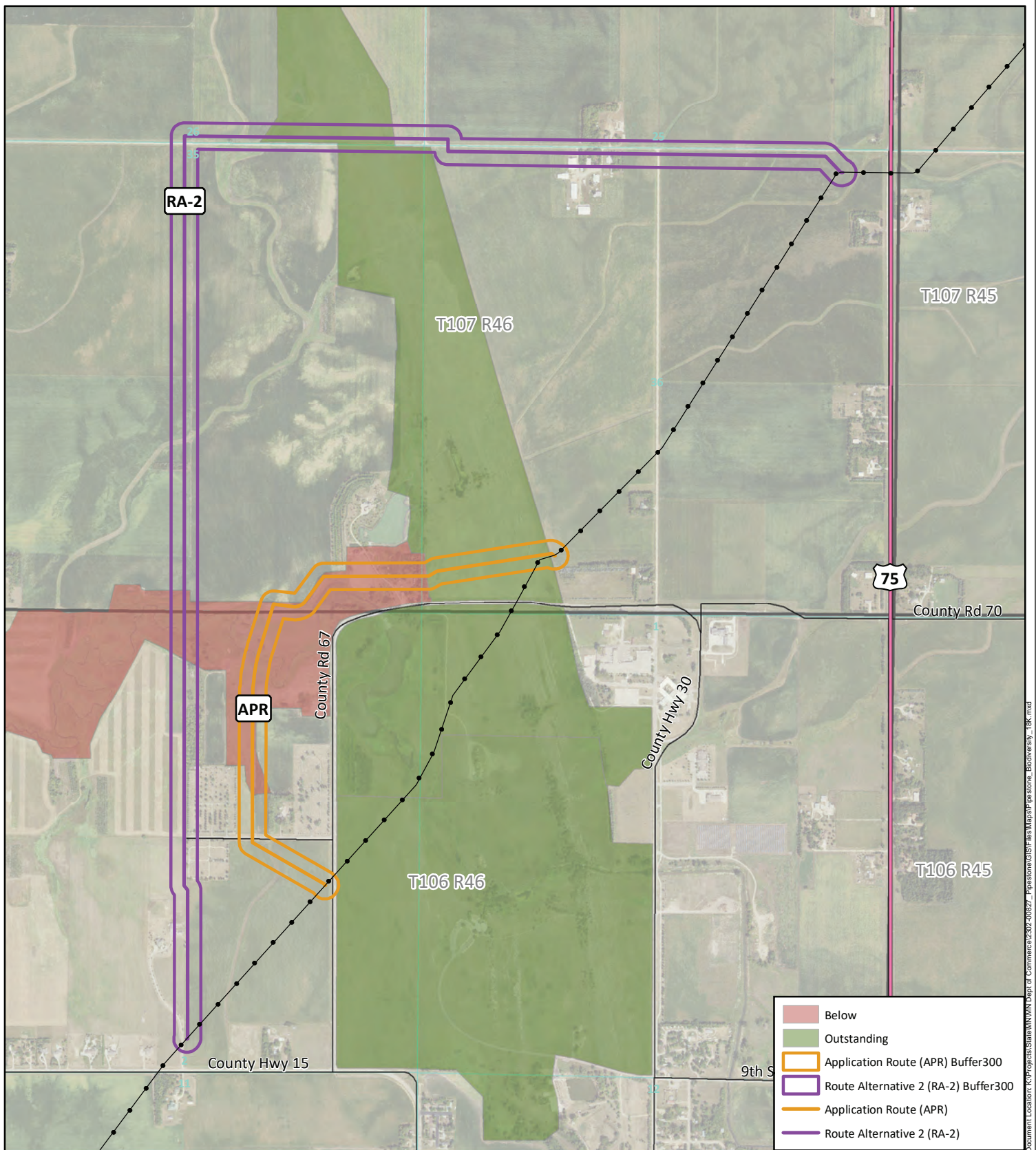


# **PIPESTONE PIPELINE REROUTE PROJECT**

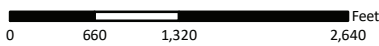
DOCKET NUMBER: PPL-23-109

APPLICANT: MAGELLAN PIPELINE COMPANY L.P.

**VOLUME II - APPENDIX A-5 FIGURE: SITES OF BIODIVERSITY SIGNIFICANCE**



**Sites of Biological Diversity**  
 Pipestone Pipeline Reroute Project  
 Docket Number: PPL-23-109  
 Pipestone, MN



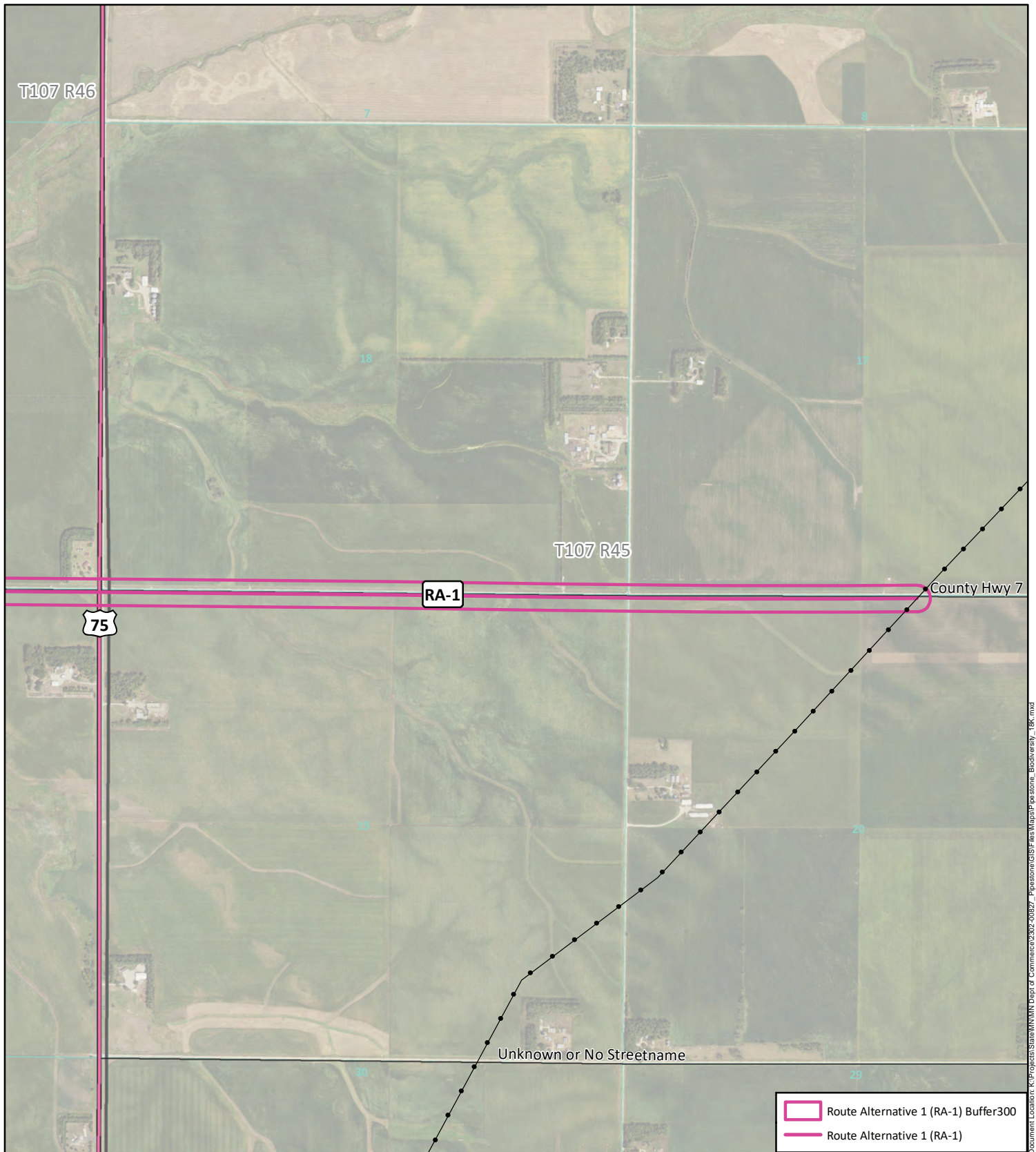
Data Source: US Fish and Wildlife,  
 State of MN, NRCS, & KLJ



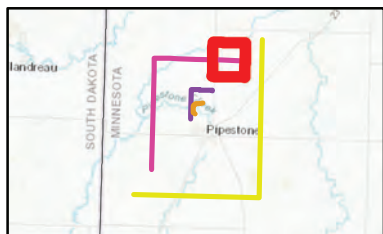
- Existing Magellan Pipeline
- Interstate
- US Highway
- State Highway
- Roads
- Township
- Sections

KLJ Project Number: 2302-00827  
 Date Created: 12/6/2023  
 Created By: duanekaul

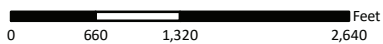
Document Location: K:\Projects\State\MN\Dept of Commerce\2302-00827\_Pipestone\GIS\Fish\Map\APR\pstone\_Biodiversity\_18K.mxd



Document Location: K:\Projects\State\MN\Dept of Commerce\2302-00827\_Pipestone\GIS\Final\Map\RA-1\_Pipestone\_Buffer300.mxd



**Sites of Biological Diversity**  
 Pipestone Pipeline Reroute Project  
 Docket Number: PPL-23-109  
 Pipestone, MN



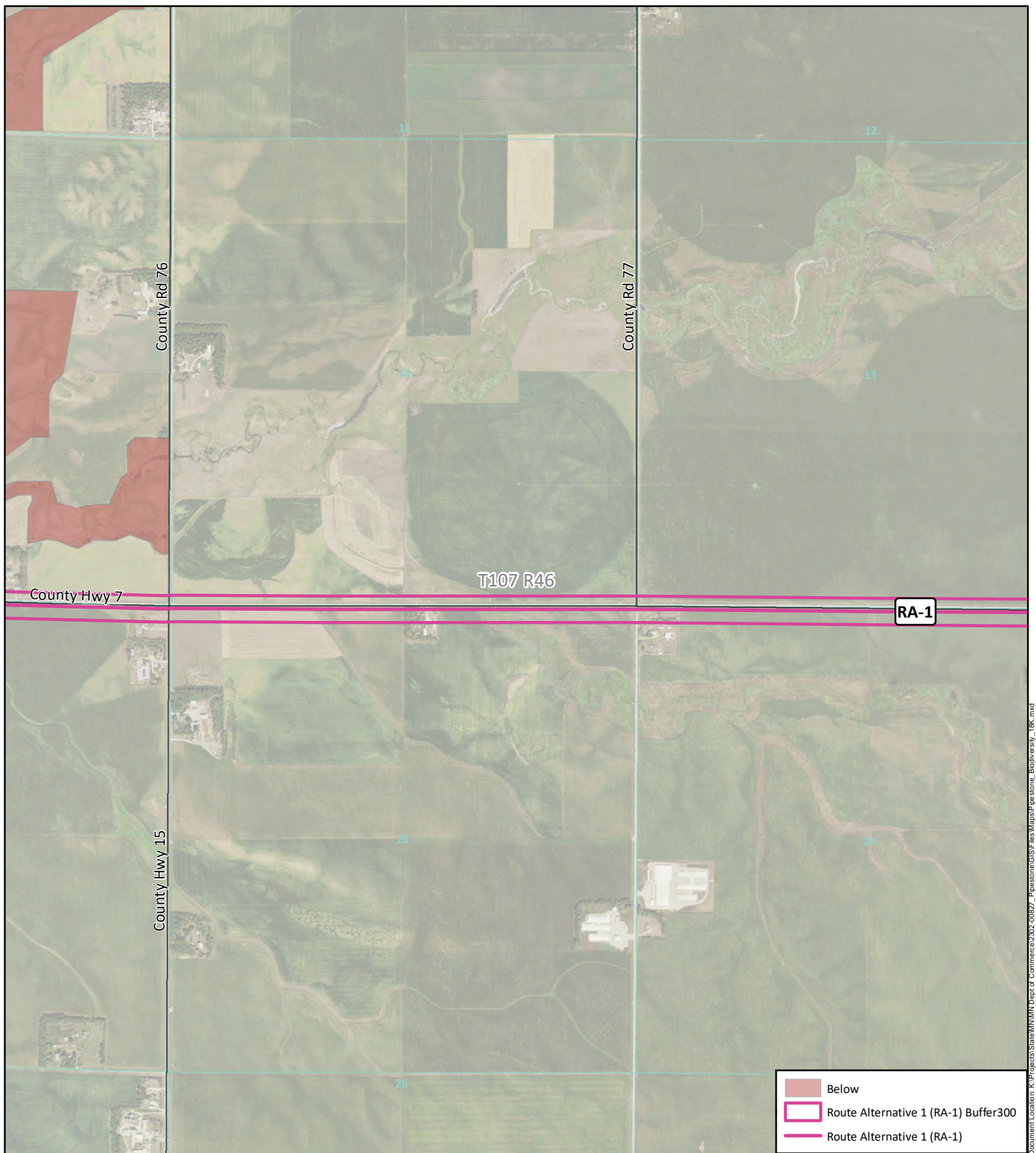
Data Source: US Fish and Wildlife,  
 State of MN, NRCS, & KLJ



- Route Alternative 1 (RA-1) Buffer300
- Route Alternative 1 (RA-1)

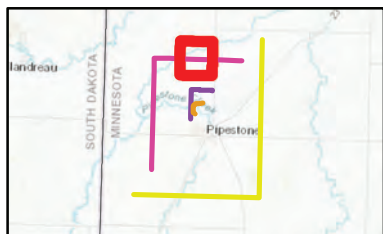
- Existing Magellan Pipeline
- Interstate
- US Highway
- State Highway
- Roads
- Township
- Sections

KLJ Project Number: 2302-00827  
 Date Created: 12/6/2023  
 Created By: duanekaul

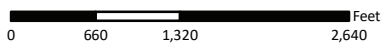


Document Location: K:\Projects\State\MN\Dept of Commerce\2302-00827\_Pipestone\GIS\Final\Map\Pipestone\_Biodiversity\_18K.mxd

Below  
 Route Alternative 1 (RA-1) Buffer300  
 Route Alternative 1 (RA-1)



**Sites of Biological Diversity**  
 Pipestone Pipeline Reroute Project  
 Docket Number: PPL-23-109  
 Pipestone, MN

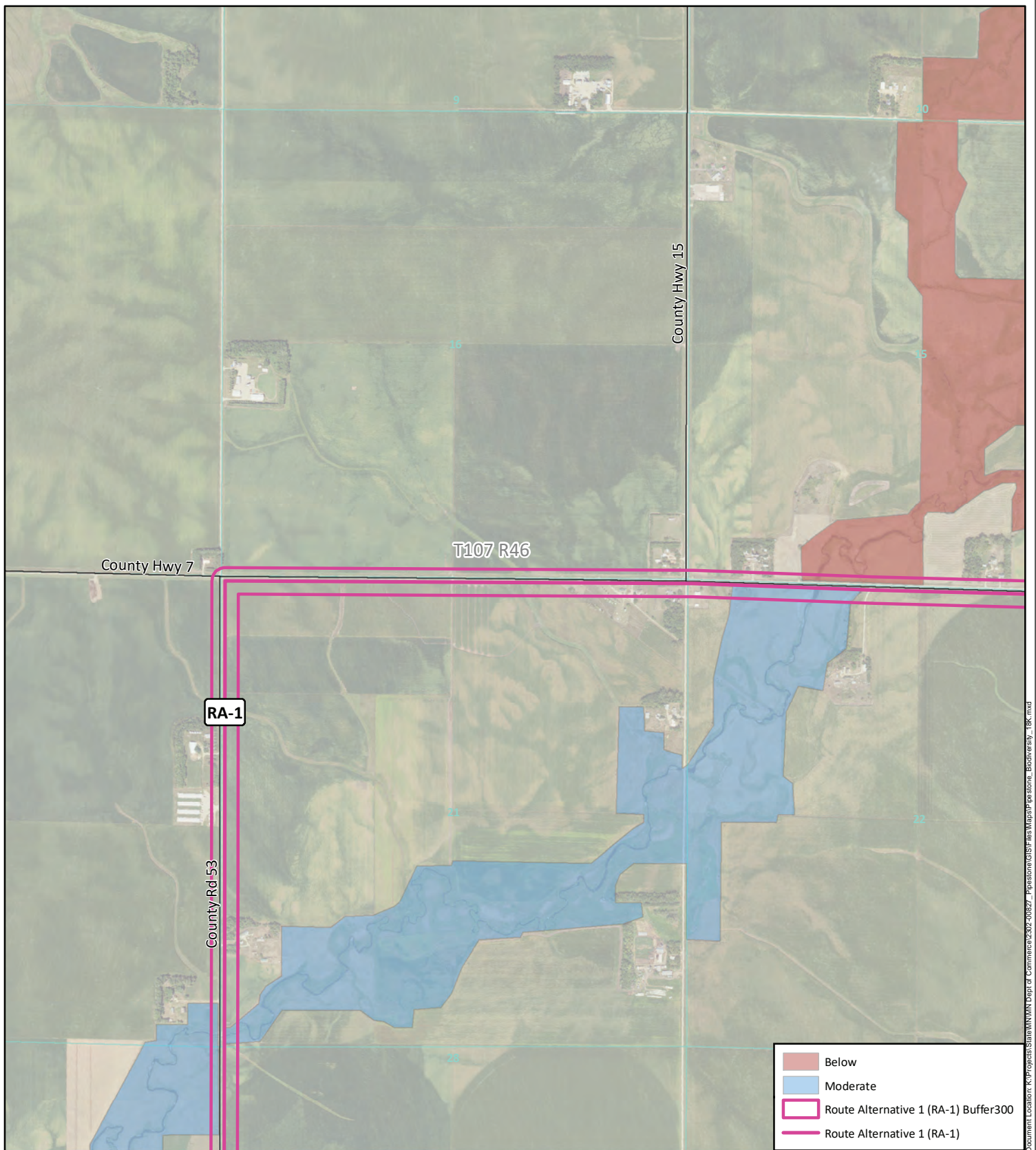


Data Source: US Fish and Wildlife,  
State of MN, NRCS, & KLJ

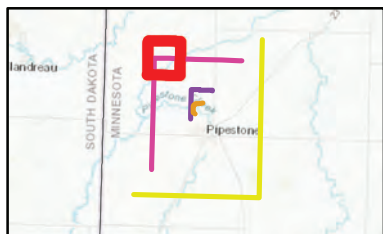


- Existing Magellan Pipeline
- Interstate
- US Highway
- State Highway
- Roads
- Township
- Sections

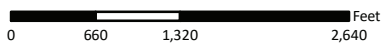
KLJ Project Number: 2302-00827  
 Date Created: 12/6/2023  
 Created By: duanekaul



Document Location: K:\Projects\State\MN\Dept of Commerce\2302-00827\_Pipestone\GIS\Fish\Map\RA-1\_Pipestone\_Buffer300\_18K.mxd



**Sites of Biological Diversity**  
 Pipestone Pipeline Reroute Project  
 Docket Number: PPL-23-109  
 Pipestone, MN



Data Source: US Fish and Wildlife,  
 State of MN, NRCS, & KLJ

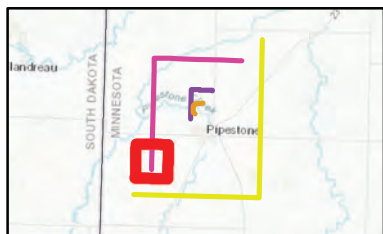
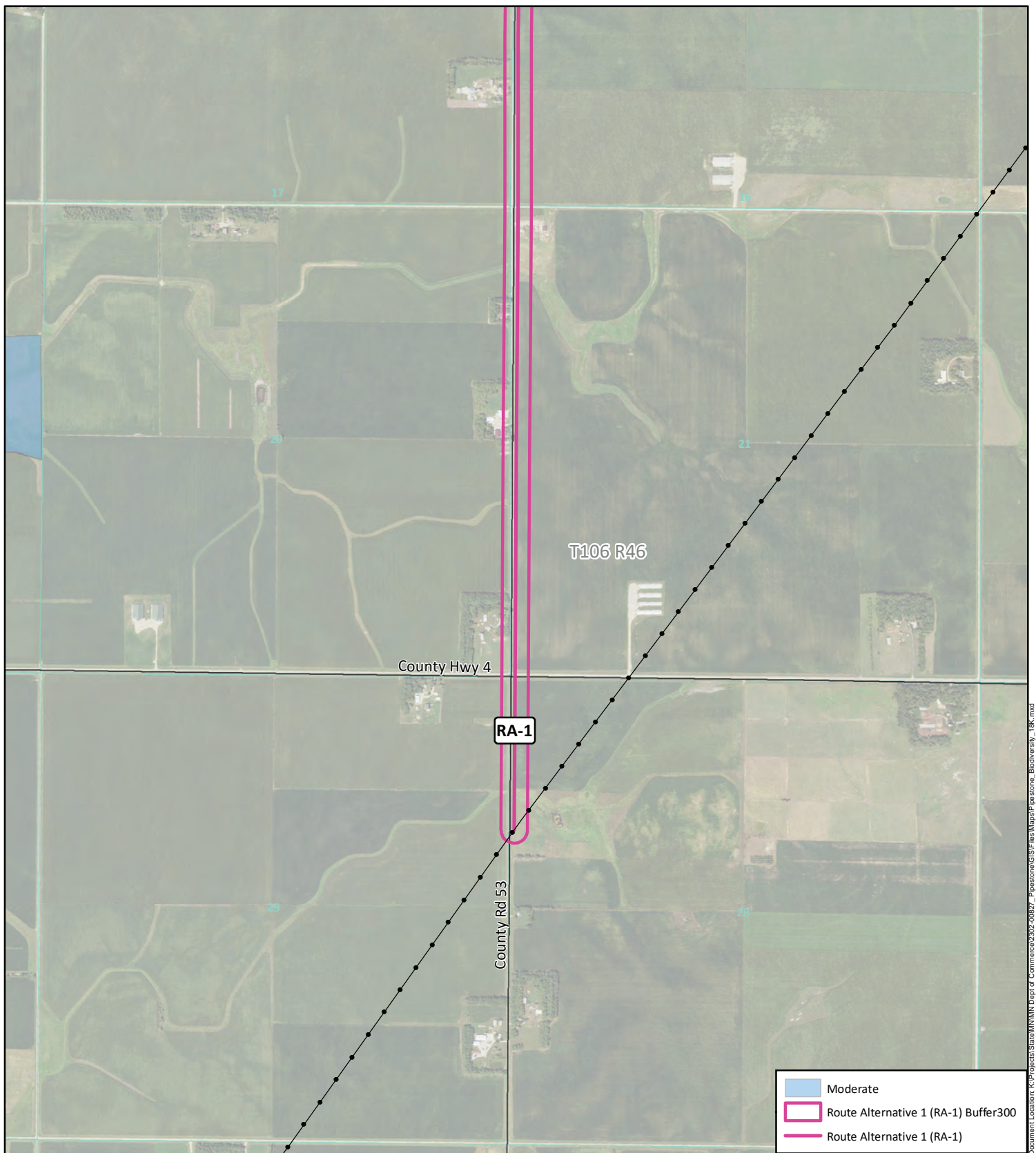


- Existing Magellan Pipeline
- Interstate
- US Highway
- State Highway
- Roads
- Township
- Sections

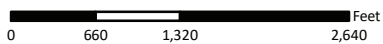
KLJ Project Number: 2302-00827  
 Date Created: 12/6/2023  
 Created By: duanekaul







**Sites of Biological Diversity**  
 Pipestone Pipeline Reroute Project  
 Docket Number: PPL-23-109  
 Pipestone, MN



Data Source: US Fish and Wildlife,  
 State of MN, NRCS, & KLJ

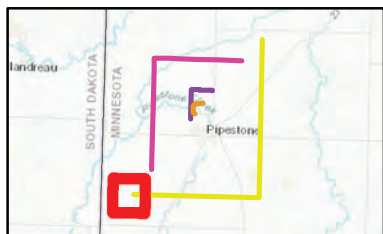
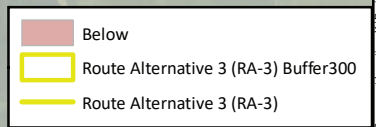
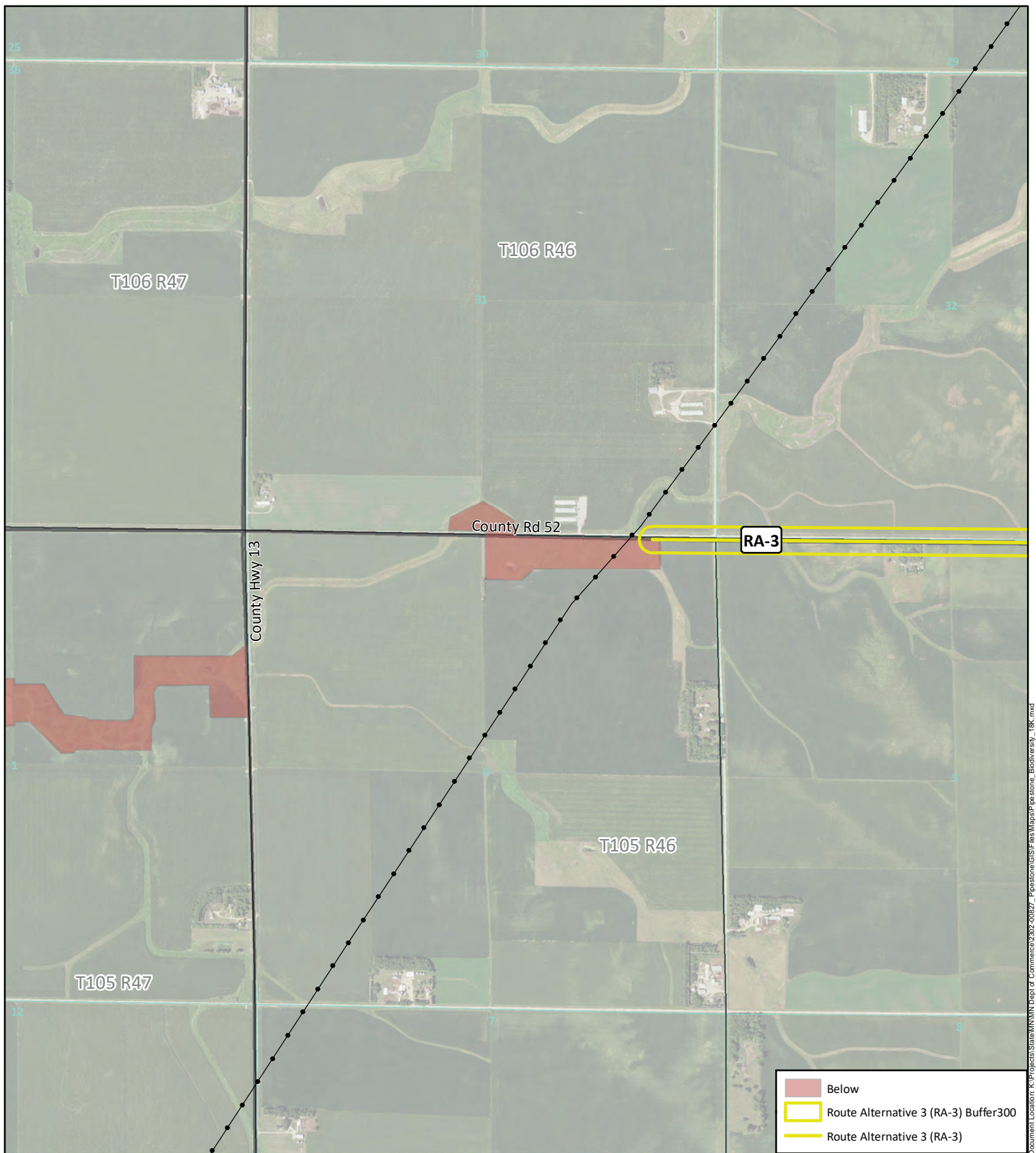


- Existing Magellan Pipeline
- Interstate
- US Highway
- State Highway
- Roads
- Township
- Sections

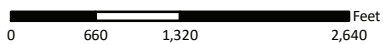
KLJ Project Number: 2302-00827  
 Date Created: 12/6/2023  
 Created By: duanekaul

Document Location: K:\Projects\State\MN\Dept of Commerce\2302-00827\_Pipestone\GIS\Final\Map\RA-1\_Pipestone\_Buffer300.mxd





**Sites of Biological Diversity**  
 Pipestone Pipeline Reroute Project  
 Docket Number: PPL-23-109  
 Pipestone, MN



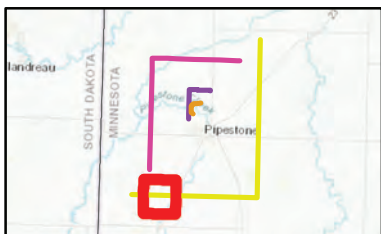
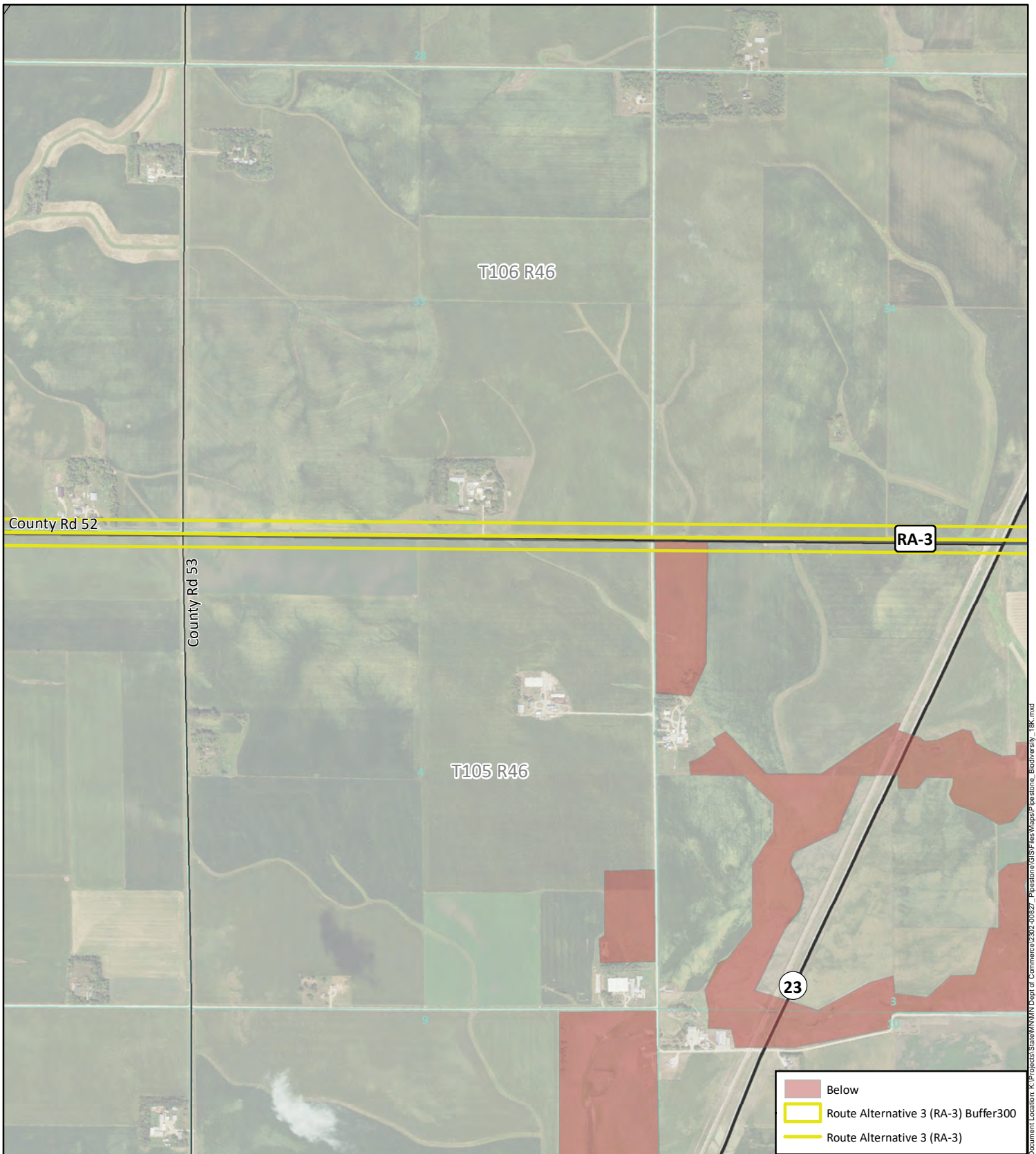
Data Source: US Fish and Wildlife,  
 State of MN, NRCS, & KLJ



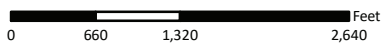
- Existing Magellan Pipeline
- Interstate
- US Highway
- State Highway
- Roads
- Township
- Sections

KLJ Project Number: 2302-00827  
 Date Created: 12/6/2023  
 Created By: duanekaul

Document Location: K:\Projects\State\MN\Dept of Commerce\2302-00827\_Pipestone\GIS\Files\Map\Pipestone\_Biodiversity\_18K.mxd



**Sites of Biological Diversity**  
 Pipestone Pipeline Reroute Project  
 Docket Number: PPL-23-109  
 Pipestone, MN



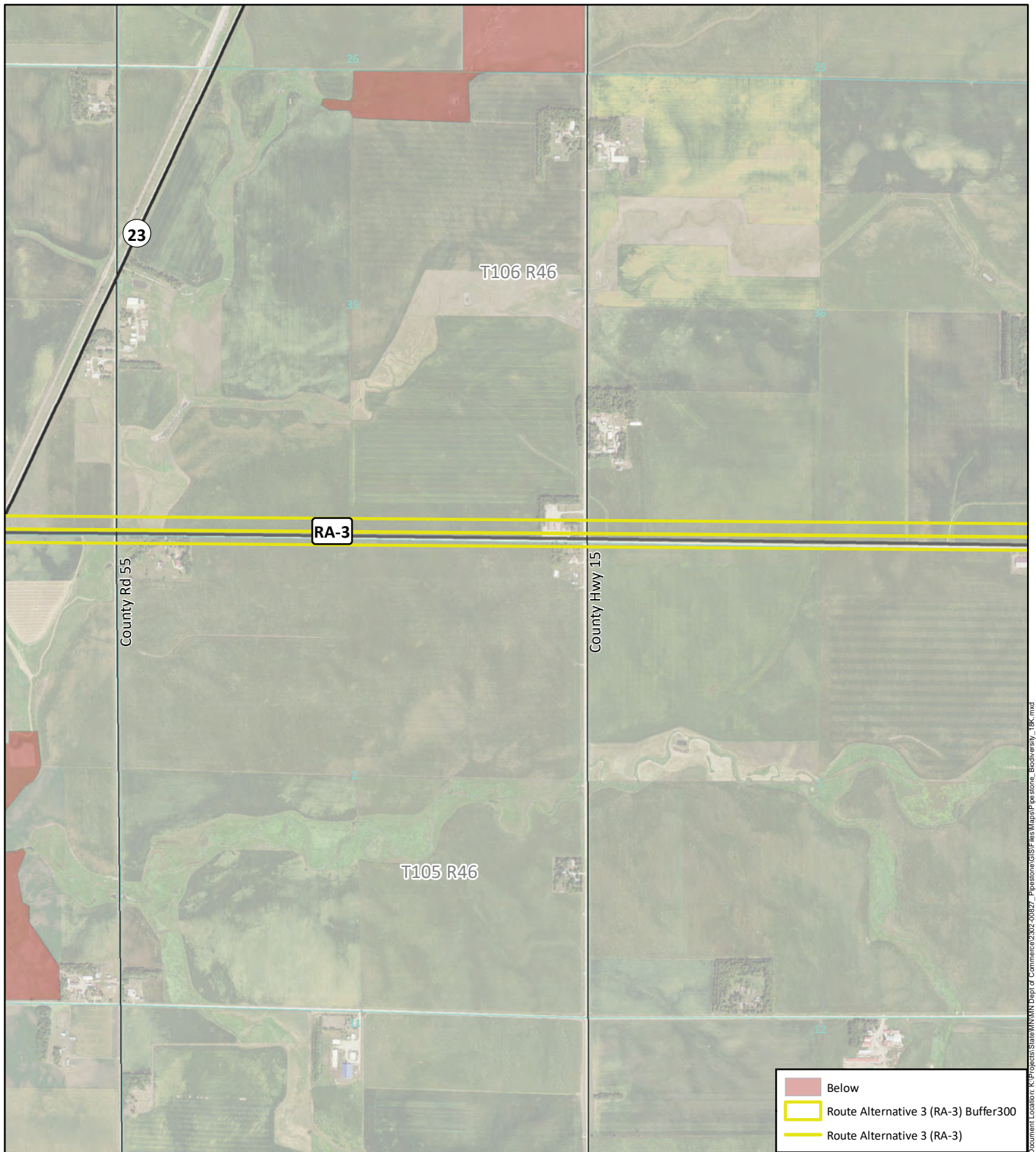
Data Source: US Fish and Wildlife,  
 State of MN, NRCS, & KLJ



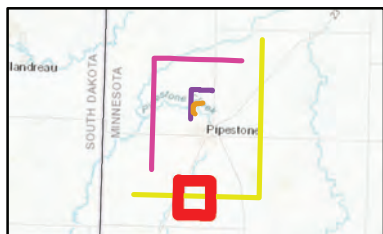
- Existing Magellan Pipeline
- Interstate
- US Highway
- State Highway
- Roads
- Township
- Sections

KLJ Project Number: 2302-00827  
 Date Created: 12/6/2023  
 Created By: duanekaul

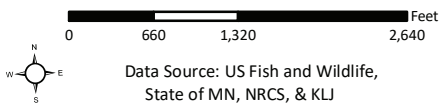
Document Location: K:\Projects\State\MN\Dept of Commerce\2302-00827\_Pipestone\GIS\FinalMap\Pipestone\_Biodiversity\_18K.mxd



	Below
	Route Alternative 3 (RA-3) Buffer300
	Route Alternative 3 (RA-3)



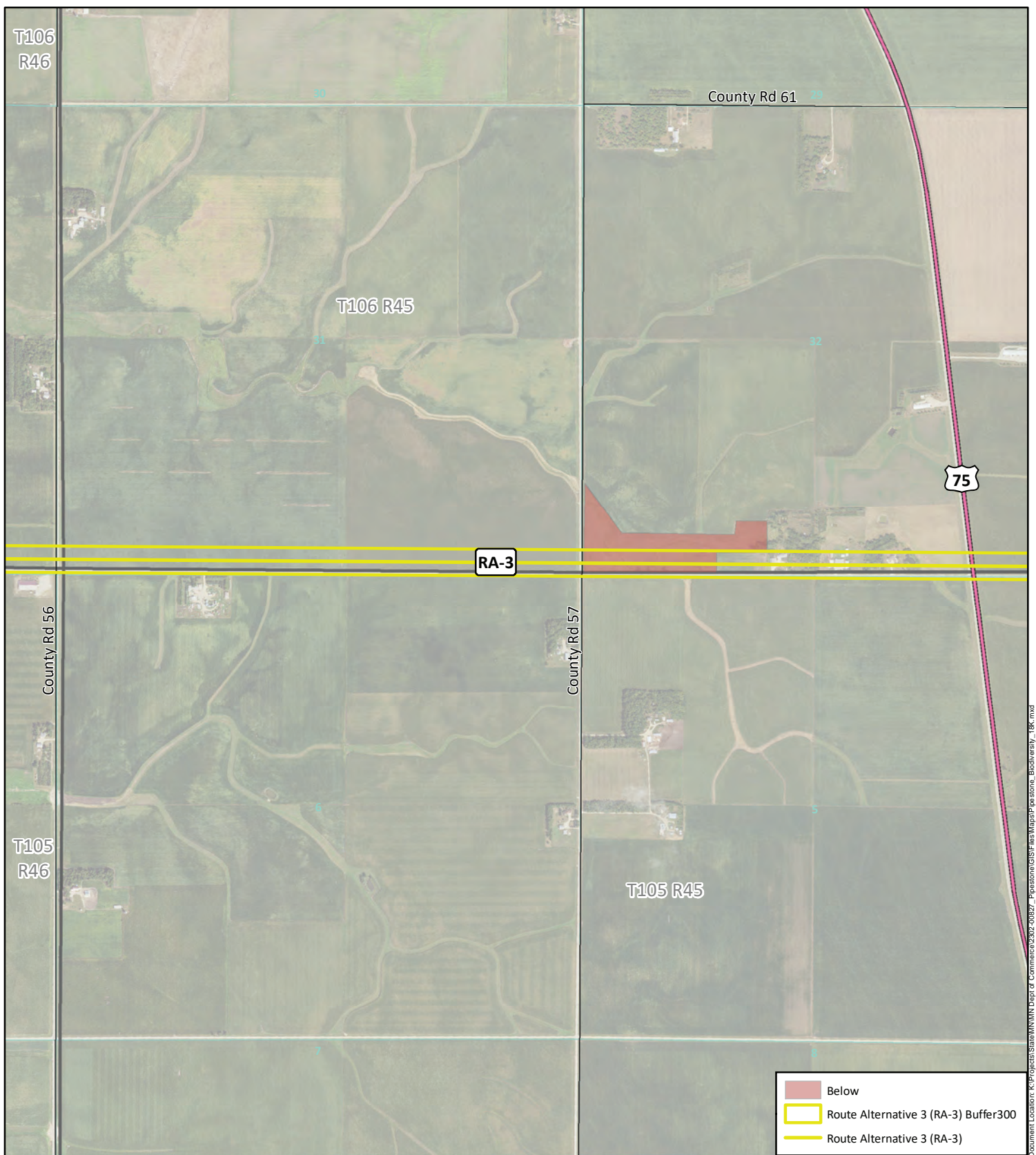
**Sites of Biological Diversity**  
 Pipestone Pipeline Reroute Project  
 Docket Number: PPL-23-109  
 Pipestone, MN



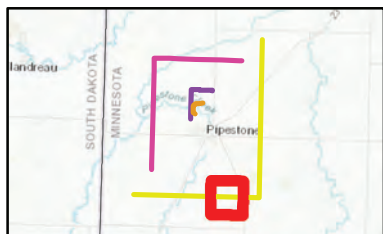
- Existing Magellan Pipeline
- Interstate
- US Highway
- State Highway
- Roads
- Township
- Sections

KLJ Project Number: 2302-00827
Date Created: 12/6/2023
Created By: duanekaul

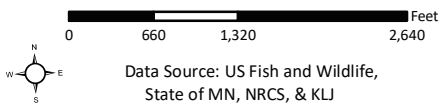
Document Location: K:\Projects\State\MN\Dept of Commerce\2302-00827\_Pipestone\GIS\FinalMap\RA-3\_Buffer300.mxd



- Below
- Route Alternative 3 (RA-3) Buffer300
- Route Alternative 3 (RA-3)



**Sites of Biological Diversity**  
 Pipestone Pipeline Reroute Project  
 Docket Number: PPL-23-109  
 Pipestone, MN

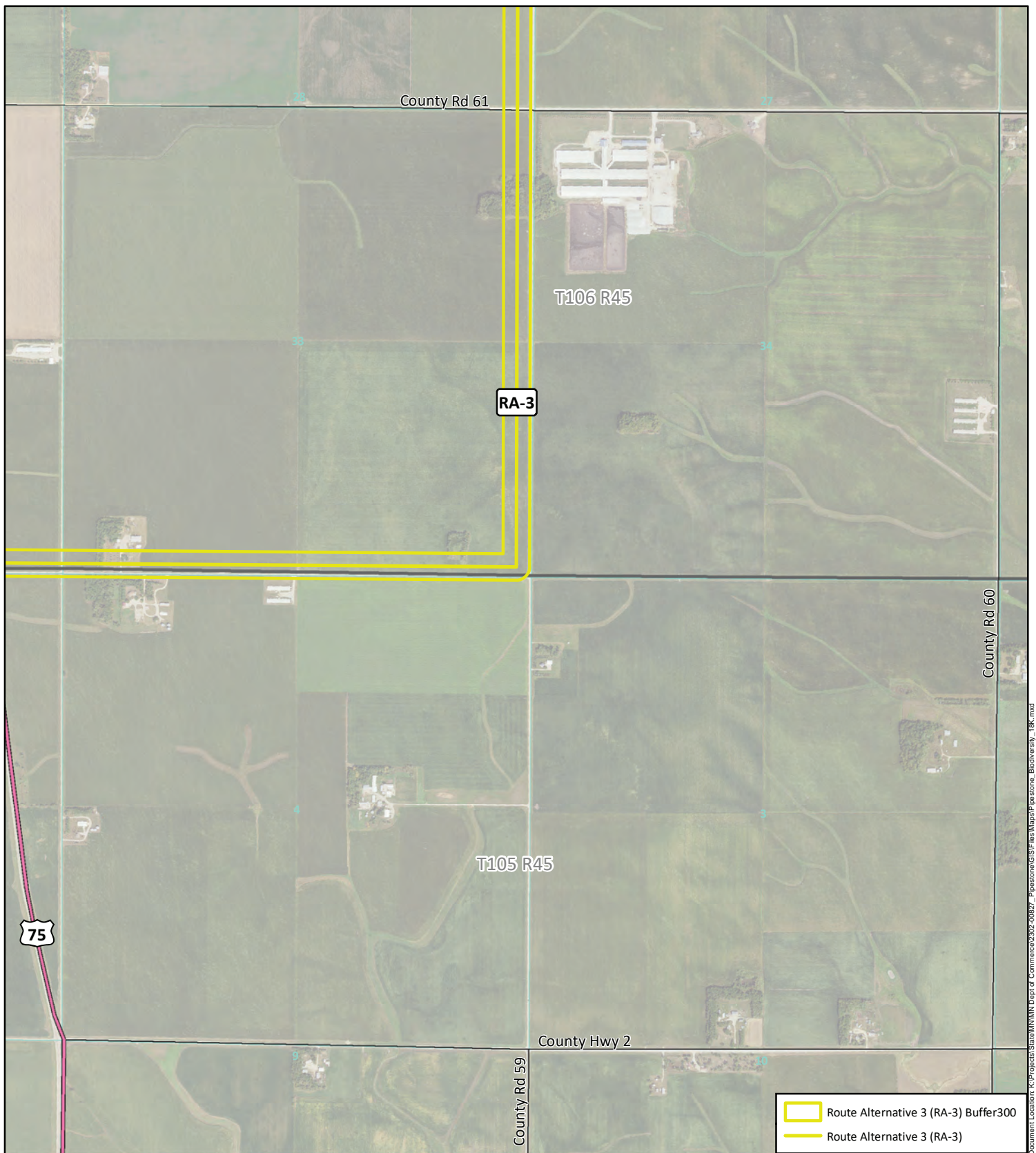


Data Source: US Fish and Wildlife,  
 State of MN, NRCS, & KLJ



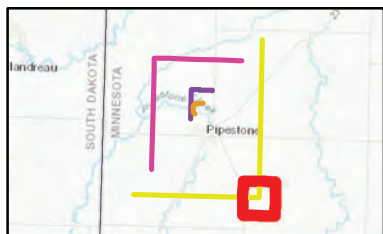
- Existing Magellan Pipeline
- Interstate
- US Highway
- State Highway
- Roads
- Township
- Sections

KLJ Project Number: 2302-00827  
 Date Created: 12/6/2023  
 Created By: duanekaul

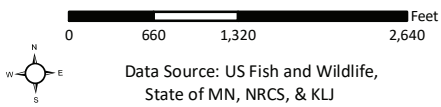


Document Location: K:\Projects\State\MN\Dept of Commerce\2302-00827\_Pipestone\GIS\Final\Map\RA-3\_Buffer300\_18K.mxd

- Route Alternative 3 (RA-3) Buffer300
- Route Alternative 3 (RA-3)

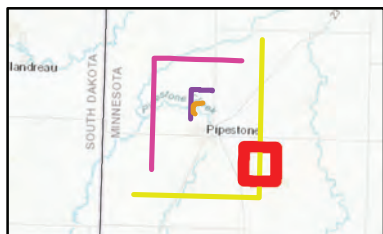
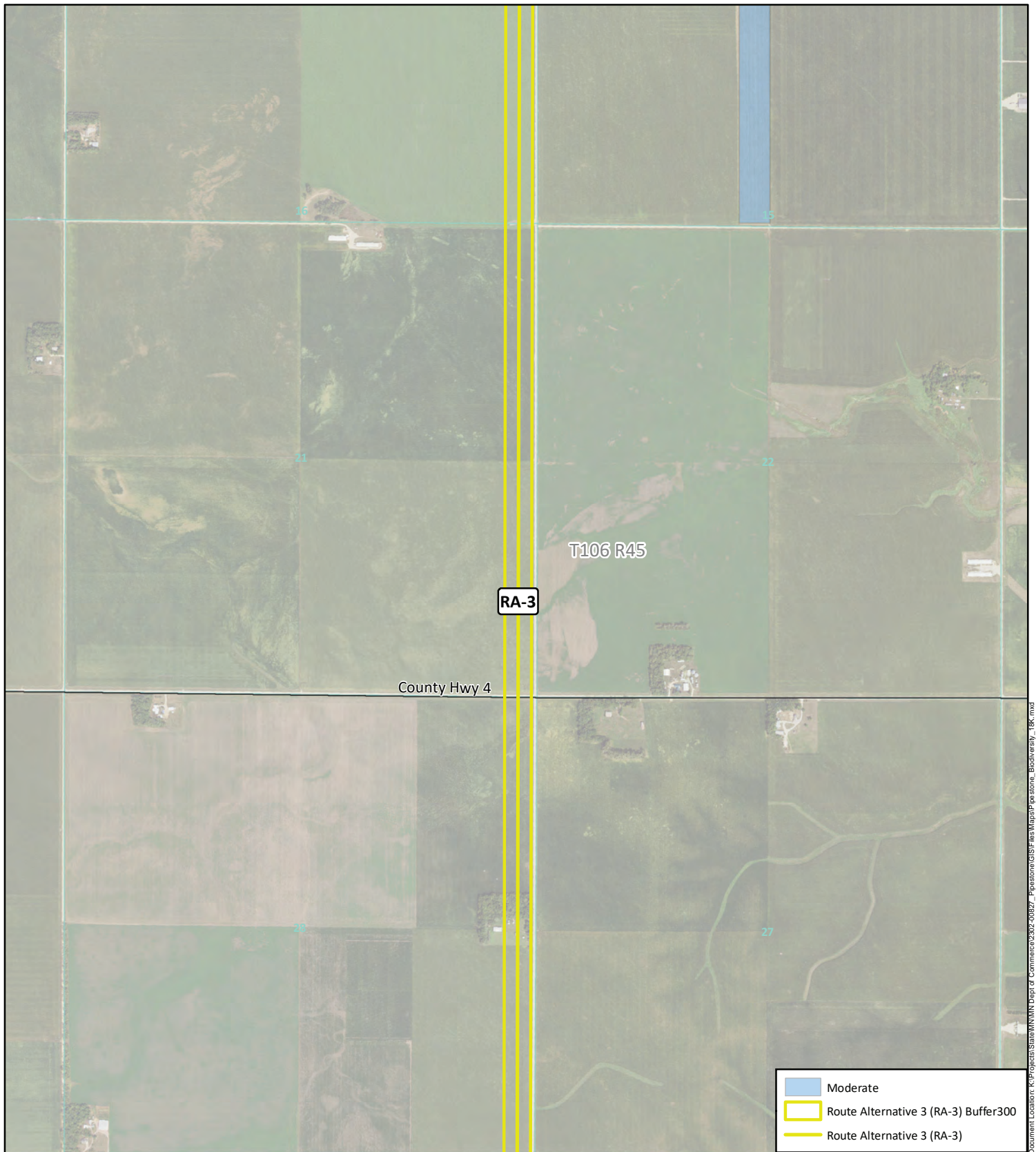


**Sites of Biological Diversity**  
 Pipestone Pipeline Reroute Project  
 Docket Number: PPL-23-109  
 Pipestone, MN

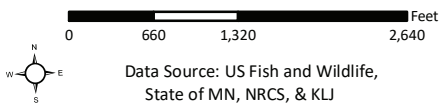


- Existing Magellan Pipeline
- Interstate
- US Highway
- State Highway
- Roads
- Township
- Sections

KLJ Project Number: 2302-00827  
 Date Created: 12/6/2023  
 Created By: duanekaul



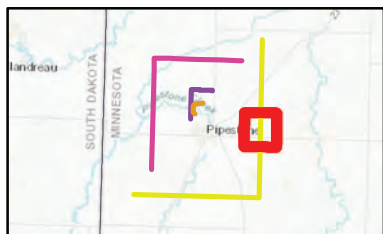
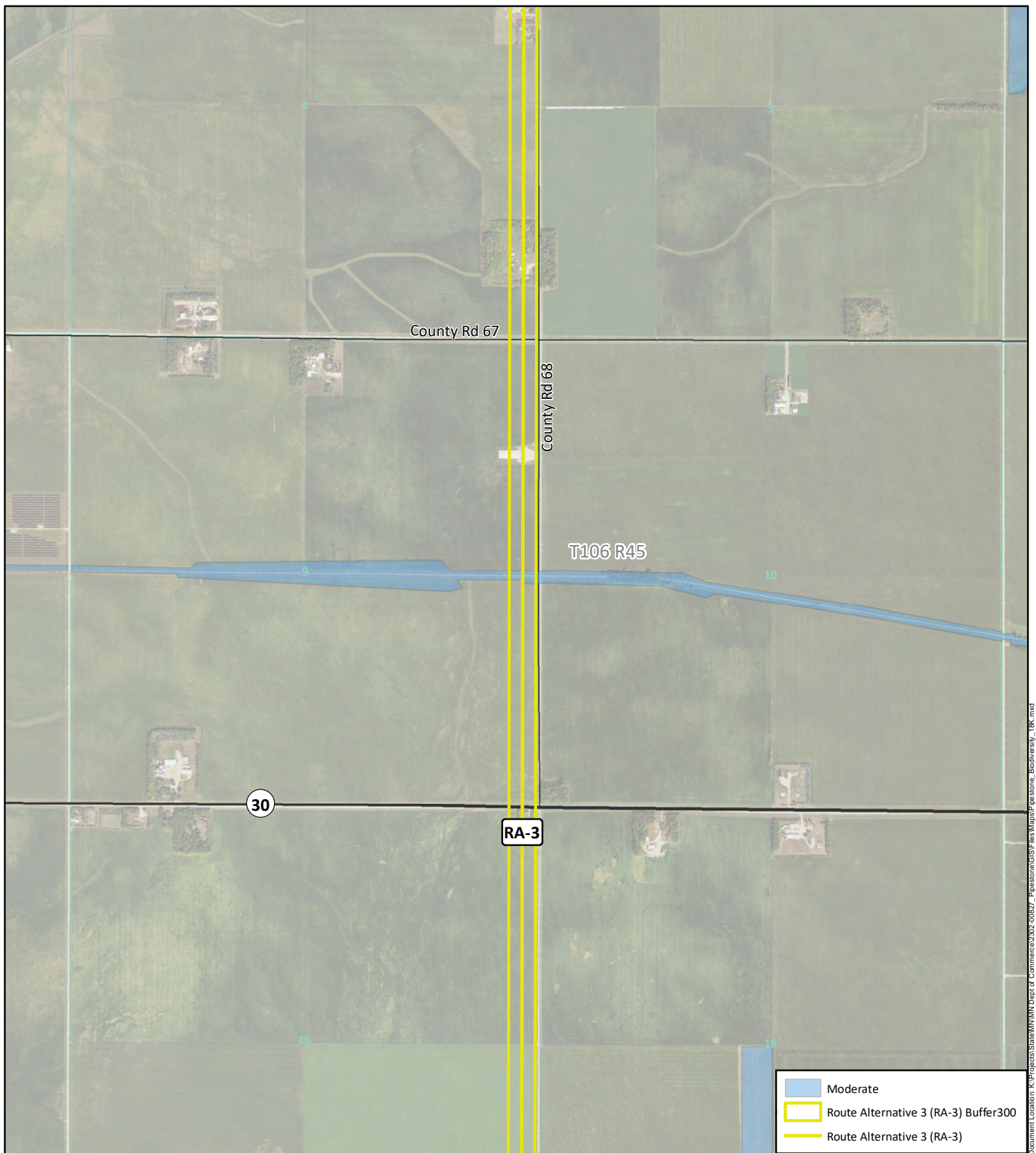
**Sites of Biological Diversity**  
 Pipestone Pipeline Reroute Project  
 Docket Number: PPL-23-109  
 Pipestone, MN



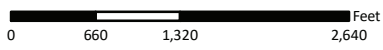
- Existing Magellan Pipeline
- Interstate
- US Highway
- State Highway
- Roads
- Township
- Sections

KLJ Project Number: 2302-00827  
 Date Created: 12/6/2023  
 Created By: duanekaul

Document Location: K:\Projects\State\MN\MN Dept of Commerce\2302-00827\_Pipestone\GIS\Fish\Map\RA-3\stone\_location\_18K.mxd



**Sites of Biological Diversity**  
 Pipestone Pipeline Reroute Project  
 Docket Number: PPL-23-109  
 Pipestone, MN



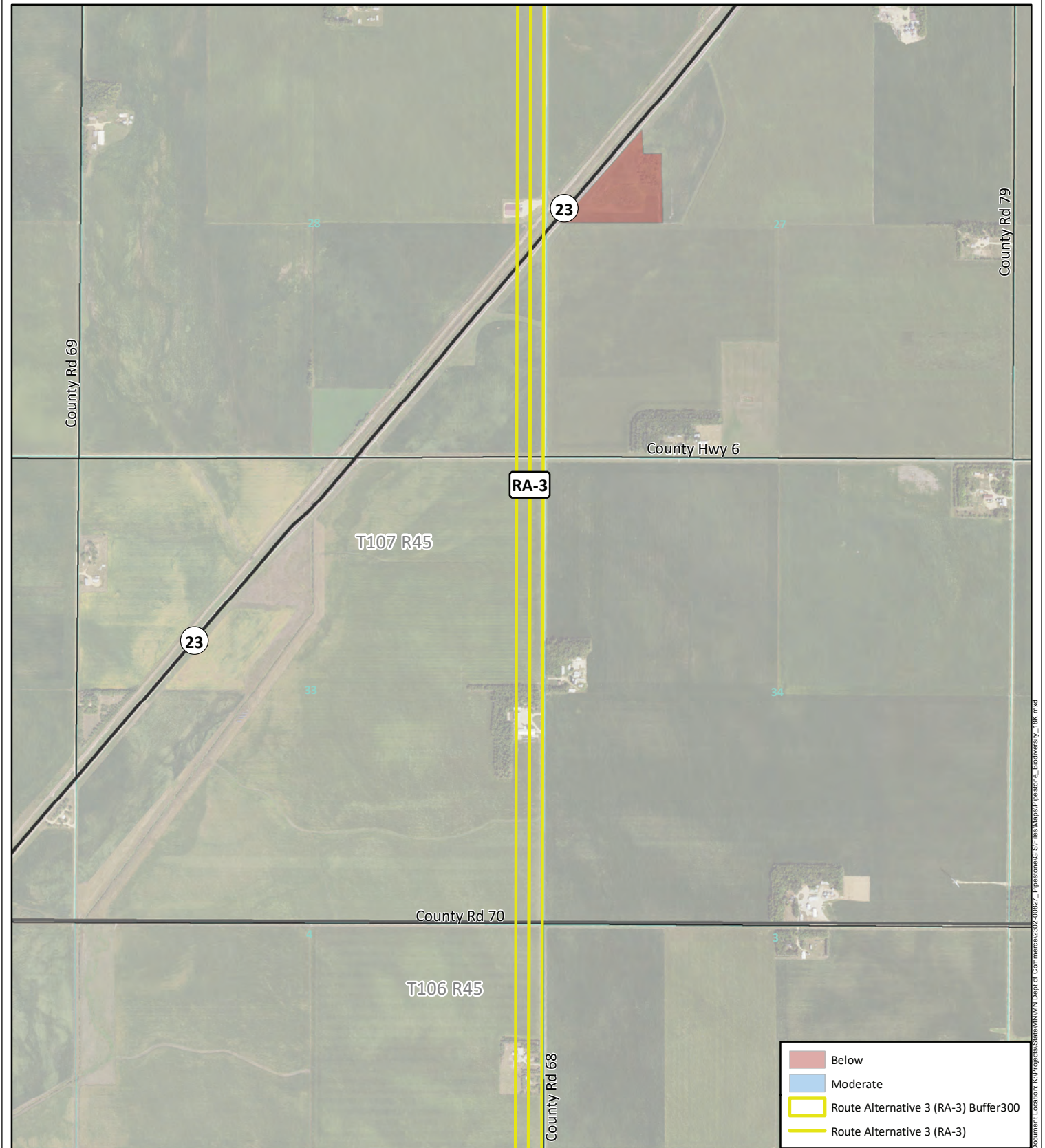
Data Source: US Fish and Wildlife,  
 State of MN, NRCS, & KLJ



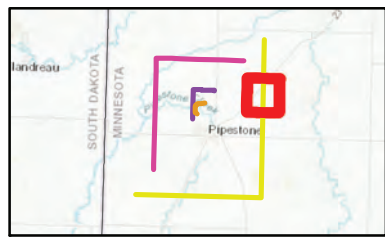
- Existing Magellan Pipeline
- Interstate
- US Highway
- State Highway
- Roads
- Township
- Sections

KLJ Project Number: 2302-00827  
 Date Created: 12/6/2023  
 Created By: duanekaul

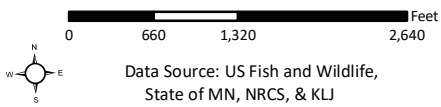
Document Location: K:\Projects\State\MN\Dept of Commerce\2302-00827\_Pipestone\GIS\Fish\Map\RA-3\_Buffer300.mxd



	Below
	Moderate
	Route Alternative 3 (RA-3) Buffer300
	Route Alternative 3 (RA-3)



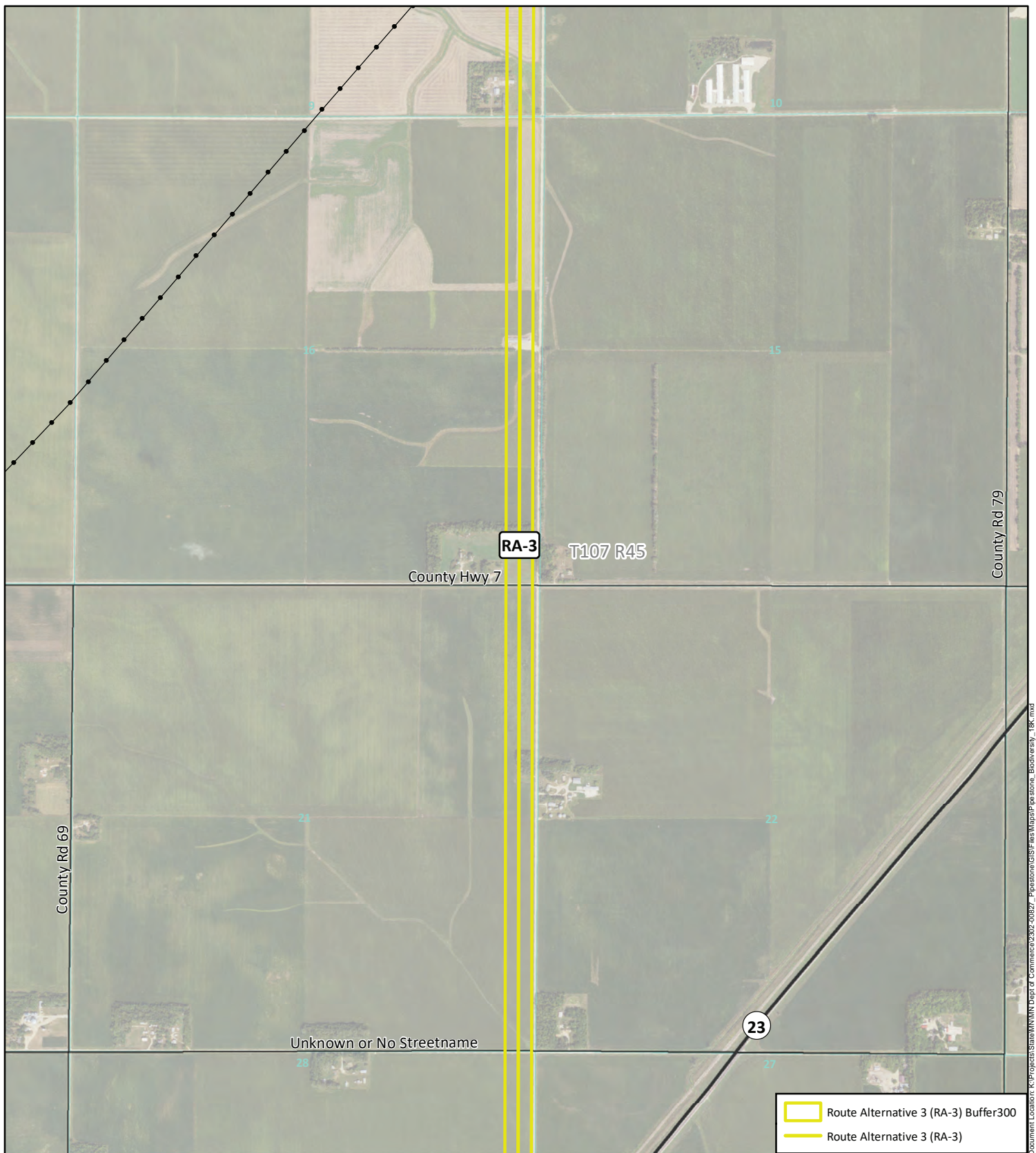
**Sites of Biological Diversity**  
 Pipestone Pipeline Reroute Project  
 Docket Number: PPL-23-109  
 Pipestone, MN



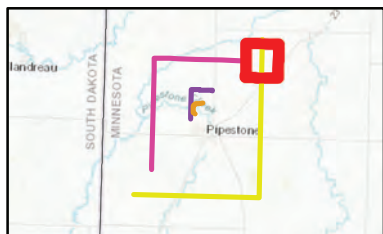
- Existing Magellan Pipeline
- Interstate
- US Highway
- State Highway
- Roads
- Township
- Sections

KLJ Project Number: 2302-00827
Date Created: 12/6/2023
Created By: duanekaul

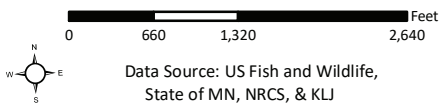




- Route Alternative 3 (RA-3) Buffer300
- Route Alternative 3 (RA-3)

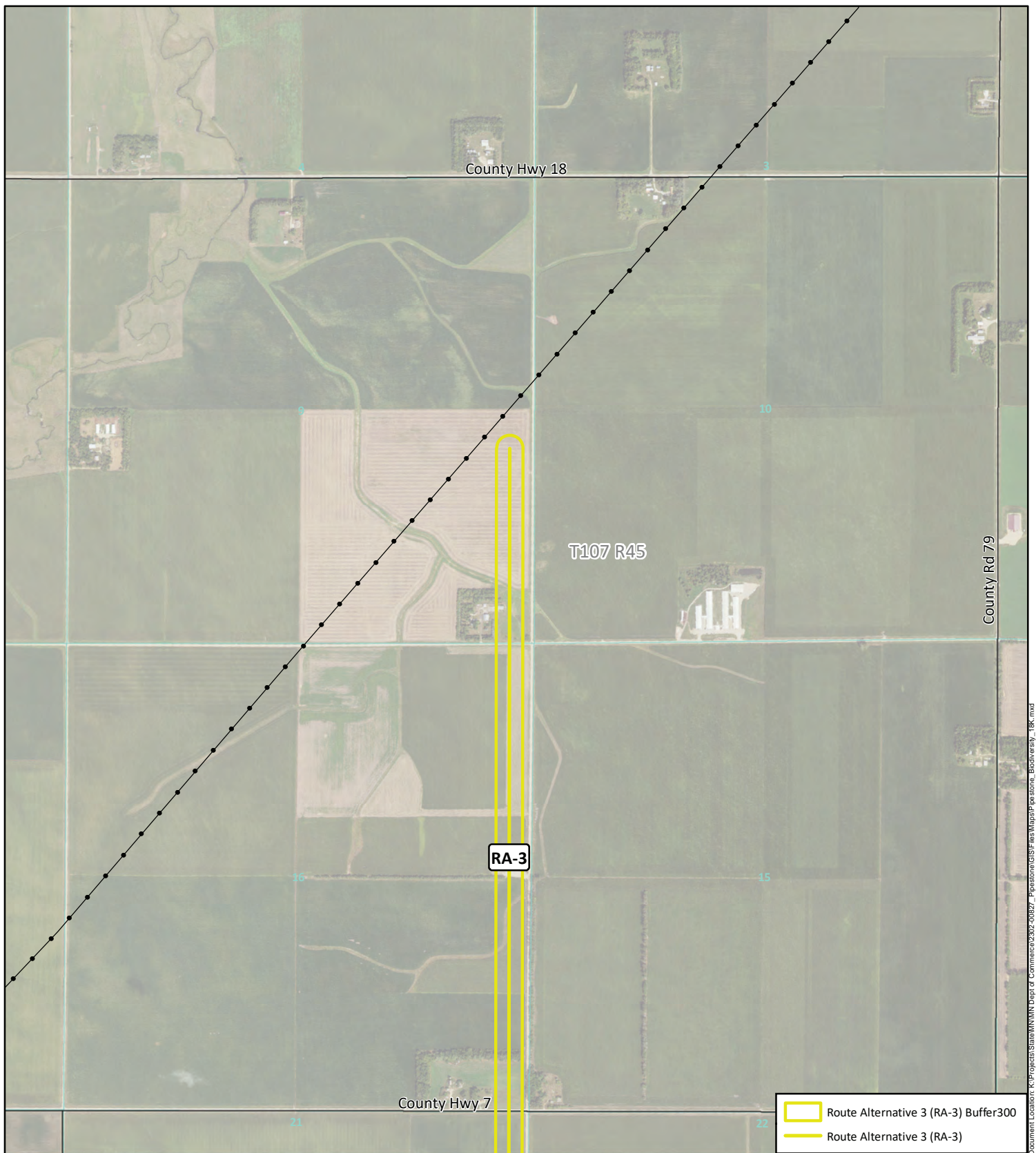


**Sites of Biological Diversity**  
 Pipestone Pipeline Reroute Project  
 Docket Number: PPL-23-109  
 Pipestone, MN

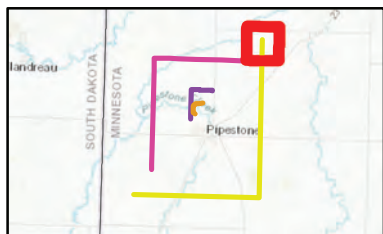


- Existing Magellan Pipeline
- Interstate
- US Highway
- State Highway
- Roads
- Township
- Sections

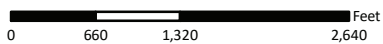
KLJ Project Number: 2302-00827  
 Date Created: 12/6/2023  
 Created By: duanekaul



Document Location: K:\Projects\State\MN\Dept of Commerce\2302-00827 - Pipeliner\GIS\Final\Map\RA-3 - Locality\_18K.mxd



**Sites of Biological Diversity**  
 Pipestone Pipeline Reroute Project  
 Docket Number: PPL-23-109  
 Pipestone, MN



Data Source: US Fish and Wildlife,  
 State of MN, NRCS, & KLJ



- Route Alternative 3 (RA-3) Buffer300
- Route Alternative 3 (RA-3)

- Existing Magellan Pipeline
- Interstate
- US Highway
- State Highway
- Roads
- Township
- Sections

KLJ Project Number: 2302-00827  
 Date Created: 12/6/2023  
 Created By: duanekaul