

September 19, 2024

VIA EDOCKETS

Mr. Will Seuffert
Executive Secretary
Public Utilities Commission
121 Seventh Place East, Suite 350
Saint Paul, MN 55101-2147

RE: Mankato to Mississippi River Transmission Project
Scoping Summary and Recommendations
Docket Nos. E002/CN-22-532 and E002/TL-23-157

Executive Secretary Seuffert:

Attached are comments and recommendation of Energy Environmental Review and Analysis (EERA) staff in the following matter:

In the Matter of the Application of Xcel Energy for a Certificate of Need and Route Permit for the Mankato – Mississippi River 345 kV Transmission Line Project in Southeast Minnesota

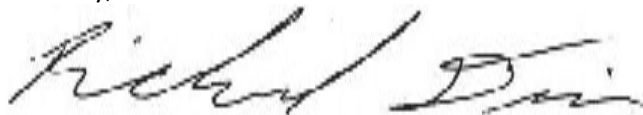
The combined certificate of need and route permit application was filed on April 2, 2024, by:

Northern States Power Company (Xcel Energy)
Ellen Heine, Principal Siting and Permitting Agent
414 Nicollet Mall, 414-6A
Minneapolis, MN 55401
ellen.l.heine@xcelenergy.com
612-330-6073

EERA staff herein provides the Commission with a scoping process summary for the project including system and route alternatives.

I am available to answer any questions the Commission might have.

Sincerely,



Richard Davis
Environmental Review Manager
Energy Environmental Review and Analysis

BEFORE THE MINNESOTA PUBLIC UTILITIES COMMISSION

ENERGY ENVIRONMENTAL REVIEW AND ANALYSIS COMMENTS AND RECOMMENDATIONS

Mankato - Mississippi River 345 kV Transmission Line Project

Docket No. E-002/CN-22-532 | E-002/TL-22-157

Date: September 19, 2024

Staff: Richard Davis | richard.davis@state.mn.us | 651-539-1846

In the Matter of the Application of Xcel Energy for a Certificate of Need and Route Permit for the Mankato – Mississippi River 345 kV Transmission Line Project in Southeast Minnesota

Issues Addressed: These comments and recommendations summarize the environmental impact statement scoping process, discuss the routing alternatives proposed during the scoping process, and identify those alternatives which Energy Environmental Review and Analysis staff recommends for further analysis in the environmental impact statement.

Attachments: Attachment 1: Maps

Additional information, including the scoping comments received, can be found on eDockets by searching “22” for year and “532” for number or “22” for year and “157” for number:

<https://www.edockets.state.mn.us/EFiling/search.jsp> or the Department of Commerce’s webpage: <http://mn.gov/commerce/energyfacilities>.

To request this document in another format, such as large print or audio, call 651-539-1529. Persons with a hearing or speech impairment may call using their preferred Telecommunications Relay Service.

Introduction

On April 2, 2024, Northern States Power Company, doing business as Xcel Energy (applicant), filed a joint application for a certificate of need and a route permit to construct and operate the Mankato – Mississippi River 345 kV Transmission Project (project), which will consist of an approximately 130-mile long 345 kilovolt (kV) transmission line between the existing Wilmarth Substation in Mankato, Minnesota, and the Mississippi River near the city of Kellogg in Wabasha County, Minnesota. The project will also include the construction of a new, approximately 20-mile long 161 kV transmission line, between the existing North Rochester Substation near Pine Island, Minnesota and a connection point with the existing 161 kV Chester transmission line northeast of Rochester, Minnesota.¹

The Minnesota Public Utilities Commission (Commission) accepted the joint application as complete on

¹ Xcel Energy. April 2, 2024. Application for a Certificate of Need and Route Permit for the Mankato – Mississippi River Transmission Project, eDocket Nos. 20244-204917-19 (Cover Letter), 20244-204917-17 (Combined Application and Appendices A-F). <https://apps.commerce.state.mn.us/eera/web/file-list/15584>

June 26, 2024.² Subsequently, Commission and Department of Commerce (Department) staff conducted public meetings and provided a public comment period for comments on the scope of the environmental impact statement (EIS) that will be prepared for the project.³

The Commission requested that Department Energy Environmental Review and Analysis (EERA) staff submit to the Commission, for review and input, the route alternatives suggested during the EIS scoping process. The comments herein describe the scoping process and route alternatives proposed during the scoping process. They discuss those alternatives EERA staff recommends for inclusion in the scope of the EIS (including 10 route segments and 5 alignment alternatives) and those not recommended for inclusion in the scope of the EIS (including two route segments). Following the Commission's review and input, the Department will finalize and issue the scoping decision for the EIS.

Proposed Project

The project is a new approximately 130-mile long 345 kV transmission line between the existing Wilmarth Substation in Mankato to the Mississippi River near Kellogg and a new approximately 20-mile long 161 kV transmission line between the existing North Rochester Substation near Pine Island and an existing transmission line northeast of Rochester. The project may cross portions of Blue Earth, Le Sueur, Waseca, Rice, Dodge, Olmstead, Goodhue, Winona, and Wabasha counties and is divided into the four segments described below (see attached Map 1 Applicant-Proposed Project Overview):

- Segment 1: a new 48 to 54 mile 345 kV transmission line between the Wilmarth substation and a point near the West Faribault Substation.
- Segment 2: a new 34 to 42 mile 345 kV transmission line from a point near the existing West Faribault Substation to the existing North Rochester Substation.
- Segment 3: conversion of 27 miles of existing 161/345 kV transmission line to 345/345 kV operation and installation of a new 16-mile long 345 kV circuit on the existing 345/345 kV double circuit capable structures between the existing North Rochester Substation and the Mississippi River.
- Segment 4: a new 20 to 24 mile 161 kV transmission line between the existing North Rochester Substation and the existing 161 kV Chester Line northeast of Rochester.

For this project, the applicant proposes a route width of 1,000 feet (500 feet to either side of proposed alignment), with wider areas (up to 1.25 miles wide) around project substations, at locations with routing constraints and where route options come together. The 345 kV portions of this project would require a permanent right-of-way of 150 feet. For the 161 kV portions of the project, a right-of-way of 100 feet is typically required.

The applicant anticipates that construction will begin in 2026, and that the new transmission line will be complete and in service before 2030.

² Minnesota Public Utilities Commission (June 26, 2024) *ORDER ACCEPTING APPLICATIONS AS COMPLETE, ESTABLISHING PROCEDURAL REQUIREMENTS, AND NOTICE OF AND ORDER FOR HEARING*, eDockets No. [20246-207975-01.pdf \(state.mn.us\)](#)

³ Notice of Scoping Meetings.

Project Purpose

The applicant indicates that this project, along with other Long Range Transmission Planning (LRTP) projects that were studied and approved by the Midcontinent Independent System Operator, Inc. (MISO) are needed to provide reliable, resilient, and cost-effective delivery of energy as the generation resource mix continues to evolve over the coming years. The project is needed to provide reliable, resilient, and cost-effective delivery of energy as the generation mix shifts from aging coal-fired generation plants to more new renewable energy sources.⁴

The current 345 kV transmission system experiences congestion and overloading in southern Minnesota, while renewable energy generation facilities in southwest Minnesota and northwest Iowa are producing high outputs. The project will strengthen existing outlets for renewable energy generation and provide additional transmission capacity toward Wisconsin and areas to the south. The project will help to reduce transmission congestion, reduce thermal loading, and improved transfer voltage stability.

Regulatory Process and Procedures

The project requires two separate approvals from the Commission—a certificate of need and route permit. The applicant filed its joint certificate of need and route permit application for the project on April 2, 2024. On June 26, 2024, the Commission accepted the certificate of need application as complete and authorized review using the informal process established in Minn. Rule 7829.1200. For the route permit application, the Commission accepted the route permit application as substantially complete and authorized the full permitting process established in Minn. Statute 216E.03 and Minn. Rules 7850.1700-2700.⁵ Finally, the Commission approved joint public meetings, joint public hearings, and combined environmental review of the certificate of need and route permit applications.⁶

EERA staff will prepare an EIS that will inform the Commission’s decisions on the applicant’s certificate of need and route permit application. The first step in preparing the EIS is scoping. The scoping process has two primary purposes: (1) to gather public input as to the impacts, mitigation measures, and alternatives to study in the EIS, and (2) to focus the EIS on those impacts, mitigation measures, and alternatives that will aid in the Commission’s decisions on the certificate of need and route permit applications.

Scoping Process Summary

Commission and EERA staff gathered input on the scope of the EIS through seven public scoping meetings and an associated comment period. Five of the meetings were in-person and two of the meetings were virtual. Approximately 195 people attended the public meetings. Thirty-three (33) individuals provided verbal comments at the public meetings.⁷

A comment period, which closed on August 1, 2024, provided an opportunity to submit written comments to EERA staff on potential impacts and mitigation measures for consideration in the scope of the EIS. A

⁴ Application, page 5.

⁵ Minnesota Public Utilities Commission (June 26, 2024) *ORDER ACCEPTING APPLICATIONS AS COMPLETE, ESTABLISHING PROCEDURAL REQUIREMENTS, AND NOTICE OF AND ORDER FOR HEARING*, eDockets No. [20246-207975-01.pdf \(state.mn.us\)](#)

⁶ Ibid.

⁷ Minnesota Department of Commerce (September 13, 2024) *Environmental Impact Statement Scoping Comments Received*, eDocket Numbers 20249-210198-02 [[PUBLIC COMMENT--COVER LETTER - AFFIDAVIT - SERVICE LISTS](#)], 20249-210198-04 [[PUBLIC COMMENTS 1-26](#)], 20249-210198-06 [[PUBLIC COMMENTS 27-49](#)], 20249-210198-08 [[PUBLIC COMMENTS 50-96](#)]).

total of 63 written comments were received during the comment period, nine of which were from local units of governments and state agencies.⁸ The remaining comments were received from: Citizens for Environmental Rights and Safety, F.H. Holding LLC, Rochester Archery Club, Xcel Energy, and individual members of the public.

Commenters expressed concern about a variety of potential impacts associated with the project, including those associated with farming operations, property values, multiple transmission lines on a property, public health and safety, aesthetics, land use, wildlife and associated habitat, water resources, geology, and noise. Just under one-quarter of the comments expressed a preference for, or displeasure with, a routing option proposed in the route permit application. Commentors proposed multiple route and alignment alternatives for study in the EIS.

In preparing these comments, and consistent with Minn. R. 7850.2500, subp. 3, EERA staff conferred with the applicant on the alternatives proposed for study in the EIS.⁹

EERA Staff Analysis and Comments

This section discusses system alternatives and route alternatives proposed during scoping, and EERA's analysis of these alternatives.

System Alternatives

When considering the need for the project, the Commission is charged with examining reasonable and prudent alternatives including a "no-build alternative, demand side management, purchased power, facilities of a different size or using a different energy source than the source proposed by the applicant, upgrading of existing facilities, generation rather than transmission if a high voltage transmission line is proposed, . . . use of renewable energy sources, and those alternatives identified by the commissioner of the Department of Commerce."¹⁰ Citizens submitted comments proposing three alternatives to the project itself (system alternatives).

Minn Rule 4410.2300(G) states that an alternative may be excluded from detailed analysis in an EIS if "it would not meet the underlying need for or purpose of the project, it would likely not have any significant environmental benefit compared to the project as proposed, or another alternative, of any type, that will be analyzed in the EIS would likely have similar environmental benefits but substantially less adverse economic, employment, or sociological impacts."

Thus, an alternative may be excluded from detailed analysis in the EIS if it would not meet the underlying need for or purpose of the project.

No-build Alternative

Several commentors suggested not building the project. Consistent with Minnesota Rule 7849.1500, the EIS will study a no-build alternative.

⁸ *Ibid.*

⁹ NORTHERN STATES POWER COMPANY, DBA XCEL ENERGY, RESPONSE TO EIS SCOPING COMMENTS (August 28, 2024). <https://apps.commerce.state.mn.us/docket.xhtml>

¹⁰ Minn. R. 7849.1500, Subp. B.

Chester Junction System Alternative

Commenters suggested installing a new substation at Chester Junction along Segment 3 to eliminate the need to construct the new 161 kV transmission line in Segment 4 of the proposed project. EERA staff recommends that the EIS evaluate this system alternative.

230 kV System Alternative

Commenters suggested that the EIS evaluate a 230 kV transmission line rather than the proposed 345 kV transmission line for Segments 1-3 of the project. The applicant evaluated 161 kV, 115 kV, 69 kV, and 34.5 kV voltages, in Section 5.1.1.2 of the joint application, as alternatives and concluded that a lower voltage alternative was not a more reasonable or prudent alternative to the 345 kV portions of the project. These lower voltage alternatives would not have sufficient capacity to address the overload and congestion issues on the existing system and would not offer the capacity needed to support future renewable generation. A 230 kV alternative would also require significant new substation facilities to introduce this voltage into the project area.

Minnesota Rule 7849.1500 requires that facilities of a different size be considered and evaluated in the environmental review process for the CN. EERA staff recommends that this system alternative be carried forward for study in the EIS.

Route Alternatives

When reviewing route alternatives proposed during the scoping process, the Department is charged with including in the scope of the EIS those alternatives which will “assist in the [Commission’s] decision on the [route] permit application.”¹¹ EERA staff initially screens proposed route alternatives using five criteria:

1. Was the alternative submitted in a timely manner, prior to the end of the public comment period for scoping?
2. Does the alternative contain an explanation of why the route should be included in the EIS? EERA staff interprets this criterion to require that route alternatives, to be included in the scope of the EIS, must mitigate a potential impact of the project, and this mitigation must be, in general terms, explained by the proposer of the alternative. This suggests that the location of the route alternative must be known in order to determine if potential impacts are mitigated.
3. Is the alternative outside of areas prohibited in Minn. R. 7850.4300, for example, state and national parks?
4. Does the alternative meet the applicant’s stated need for the project?
5. Is the alternative feasible? Can the alternative be constructed and is it permissible by state and federal agencies with authority for construction or operation of the project?

After this initial screening, EERA staff then analyzes the remaining alternatives to determine if their inclusion in the EIS would aid in the Commission’s decision on the route permit application. EERA staff compares each proposed alternative to other alternatives, if any, that could also avoid or mitigate the impact(s) described by the proposer. If a proposed alternative impacts relatively more human and environmental resources, it is likely that it would not aid in the Commission’s decision on the route permit application.

¹¹ Minn. R. 7850.2500.

EERA staff has used the above the criteria to analyze alternatives proposed during the scoping process. All proposed alternatives are indicated on the attached maps and discussed here. Commenters recommended 12 route segments and five alternative alignments.

The following terminology is used to discuss these alternatives:

- **Route segments** are routes proposed during scoping that deviate from the proposed alignment and are located outside of the applicant's proposed route width.
- **Alternative alignments** are alignments proposed during scoping that deviate from the proposed alignment but that fall within the applicant's proposed route width.

Alternatives Recommended for Inclusion in the Scope of the EIS

EERA staff recommends that ten route segments and five alignment alternatives be carried forward for study in the EIS. Conferring with the applicant, all are feasible and could be constructed. These alternatives are listed and briefly described below.

Route Segment 1

Joel Peters requested the EIS study route segment 1.¹² This route segment starts south of the Eastwood Substation in Blue Earth County. It traverses east along Madison Avenue until 594th Avenue where it turns north until it joins Route Option 1 South as shown on Map 2-1. This route segment would avoid potential impacts to commercial property. EERA staff recommends that route segment 1 be carried forward for further study in the EIS.

Alignment Alternative 2

The applicant requested the EIS study an alignment alternative to a portion of Route Option 1 North east of the City of Mankato along 589th Avenue.¹³ The requested change is to shift the alignment to the east side of 589th Avenue as shown on Map 2-1. This alignment alternative would avoid a new development that has broken ground in the same location as the proposed alignment for Route Option 1 North. EERA staff recommends that alignment alternative 2 be carried forward for further study in the EIS.

Route Segment 5

The applicant requested the EIS study a route segment located in the city of Madison Lake near Walnut Avenue and East Street.¹³ This route segment extends from Route Option 1 South at the northeast side of the city along the south side of an existing railroad to the west side of 626th Avenue and then south to rejoin Route Option 1 South as shown on Map 2-3. This route segment would avoid construction of a new commercial store planned along Walnut Avenue that will require extension of East Street and installation of turn lanes and sidewalks. EERA staff recommends that route segment 5 be carried forward for further study in the EIS.

¹² Comment 16; eDockets No. [20249-210198-03](#)

¹³ Northern States Power Company, DBA Xcel Energy; Response to EIS Scoping Comments; eDockets No. [20248-209829-02](#)

Route Segment 6

During the July 8, 2024, scoping meeting in Mankato, Harry Tolzman proposed a route alternative for the 345 kV transmission line that would follow the Sakatah Singing Hills State Trail.¹⁴ This proposed route segment would start at the intersection of 516th St. and the Sakatah Singing Hills State Trail and continue 3.6 miles east and rejoin Route Option 1 South near Highway 60 as shown on Map 2-4. This route segment is intended to utilize the existing Sakatah Singing Hills State Trail corridor to reduce additional land use conversion, and to move the line away from multiple residences along Highway 60. EERA staff recommends that route segment 6 be carried forward for further study in the EIS.

Route Segment 7

The applicant requested the EIS study a route segment located south of the city of Morristown along 260th Street West as shown on Map 2-54.¹⁵ This route segment would avoid construction of a new residence along 260th Steet West. EERA staff recommends that route segment 7 be carried forward for further study in the EIS.

Alignment Alternative 8

Kevin Quinlan requested the EIS study alignment alternative 8.¹⁶ This alignment alternative starts east of Echo Avenue and would traverse 0.2 miles northeast where it would reconnect with Route Option 1 North as shown on Map 2-6. The alignment alternative would avoid tree removal near a steep hill along Route Option 1 North. EERA staff recommends that alignment alternative 8 be carried forward for further study in the EIS.

Route Segment 9

Joe and Pat Degrood suggested the EIS evaluate route segment 9.¹⁷ This route segment is located southwest of the city of Faribault and east of Cannon Lake. The route segment would shift the route approximately 600 feet to the east of where it is proposed and span 0.9 miles northeast where it would reconnect with Route Option 1 North as shown on Map 2-6. Route segment 9 would minimize tree clearing. EERA staff recommends that route segment 9 be carried forward for further study in the EIS.

Route Segments 10 and 11

Edward and Jody Westad proposed two route segments (10 and 11).¹⁸ Route segment 10 starts at 250th St. West and traverses north along Interstate 35 where it would connect with Route Option 2 North. Route segment 11 starts at 245th St. E where it traverses north along Interstate 35 until it joins Route Option 2 North. These route segments are shown on Map 2-7. The commenters noted potential impacts on existing residences and structures. EERA staff recommends that route segment 10 and 11 be carried forward for further study in the EIS.

Route Segment 12

Dale Thomforde requested the EIS study an option to construct the 161 kV line parallel to the existing CAPX line along Route Option 3.¹⁹ This route segment starts at the North Rochester Substation and would

¹⁴ Comment 50; eDockets No. [20249-210198-07](#)

¹⁵ Northern States Power Company, DBA Xcel Energy; Response to EIS Scoping Comments; eDockets No. [20248-209829-02](#)

¹⁶ Comment 38; eDockets No. [20249-210198-05](#)

¹⁷ Comment 32; eDockets No. [20249-210198-05](#)

¹⁸ Comment 96; eDockets No. [20249-210198-07](#)

¹⁹ Comment 26; eDockets No. [20249-210198-03](#)

Parallel Segment 3 to 40th Avenue NE as shown on Map 2-8. This route segment would reduce project related impacts on the natural environment and human settlements by paralleling the existing CAPX alignment. EERA staff recommends that route segment 12 be carried forward for further study in the EIS.

Route Segment 13

The applicant requested the EIS study a route segment that would double circuit with the existing North Rochester to Northern Hills 161 kV line.²⁰ This route segment starts at the North Rochester Substation and would double circuit the existing transmission line for 11.3 miles south where it would connect to Route Option 4 West as shown on Map 2-8. This route segment would reduce project related impacts on the natural environment and human settlement by paralleling the existing CAPX alignment. EERA staff recommends that route segment 13 be carried forward for further study in the EIS.

Alignment Alternatives 14 and 15

Dale Thomforde requested the EIS study an alternative alignment that would cross the Zumbro River near the existing 345 kV transmission line crossing north of the County Road 12 bridge.²¹ Alignment alternative 14 would cross the Zumbro River on the North of the County Road 12 in Olmsted County. Alignment alternative 15 would cross the Zumbro River on the south side of the County Road 12. These alignment alternatives are shown on Map 2-9. These alignment alternatives are intended to reduce the project impacts to the Zumbro River by collocating the crossing with the existing County Road 12 bridge. EERA staff recommends that alignment alternatives 14 and 15 be carried forward for further study in the EIS.

Alignment Alternative 16

Shawna Hanson requested that the EIS study an alignment alternative on the south side of 75th Street NW; alignment alternative 16 is shown in Map 2-10.²² This alignment alternative would avoid clearing trees along the north side of 75th Street, which provide a visual and noise barrier from vehicle traffic for some of the residences along the north side of 75th street. EERA staff recommends that alignment alternative 16 be carried forward for further study in the EIS.

Route Segment 17

Commentors suggested that the EIS evaluate a route option for the 345 kV transmission line from the Wilmarth Substation along State Highway 14 to the Byron Substation as shown on Map 2-11.²³ This route segment currently includes a 1,000 foot wide route centered on Highway 14. Because this alternative was not originally considered by the applicant, there has been limited coordination between the applicant and MnDOT with respect to how the proposed alternative may impact the Highway 14 right-of-way. The applicant is currently working with MnDOT staff to determine which MnDOT project review option is most appropriate. If this alternative remains in the final EIS scope, an anticipated alignment will be established at a later date once a more detailed review and coordination with MnDOT staff has been undertaken.

Alternatives That Are Not Recommended for Inclusion in the Scope of the EIS

EERA staff recommends that two route segments not be included in the scope of the EIS. These route segments are not recommended for study in the EIS because they are not feasible.

²⁰ Northern States Power Company, DBA Xcel Energy; Response to EIS Scoping Comments; eDockets No. [20248-209829-02](#)

²¹ Comment 26; eDockets No. [20249-210198-03](#)

²² Comment 89; eDockets No. [20249-210198-07](#)

²³ Comment 4; eDockets No. [20249-210198-03](#)

Route Segments 3 and 4

Erin Guentzel submitted a comment requesting that the EIS evaluate a route south of the Mankato airport including either route segment 3 or route segment 4 (Map 2-2).²⁴ As discussed in Appendix Q of the application, the applicant evaluated two route alternatives south of the Mankato airport along Segment 1 North. Based on discussions with the city of Mankato, the applicant determined that these route alternatives were not constructible due to aviation easements that prohibit above-ground structures south of the airport. The two route segments would not be permissible and are therefore infeasible. Accordingly, EERA staff recommends that route segments 3 and 4 not be carried forward for further study in the EIS.

EERA Staff Recommendation

With respect to system alternatives proposed during the scoping process, EERA staff recommends that the EIS evaluate the Chester Junction system alternative and the 230 kV system alternative.

With respect to routing alternatives:

- The EIS will evaluate the routes and route segments proposed by the applicant in its route permit application.
- EERA staff recommends that the EIS also evaluate the routing alternatives noted in this document (“Alternatives Recommended for Inclusion in the Scope of the EIS”). The EIS will analyze whether these alternatives mitigate potential human or environmental impacts and will assist in the Commission’s decision on the route permit application. To the extent an alternative achieves these ends, it will be further studied in the EIS. If an alternative does not achieve these ends, the EIS will provide the reasons why and the alternative will be excluded from detailed analysis.
- EERA staff recommends that the Mankato airport route segments (route segments 3 and 4) not be carried forward for study in the EIS.

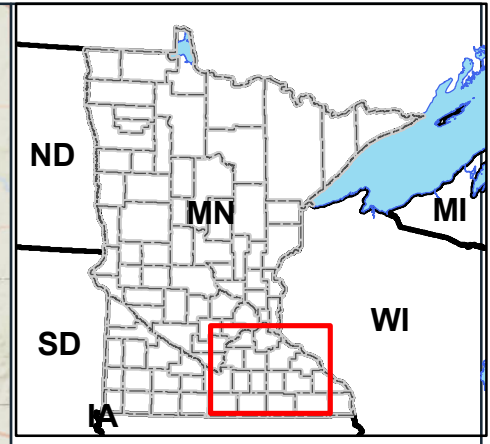
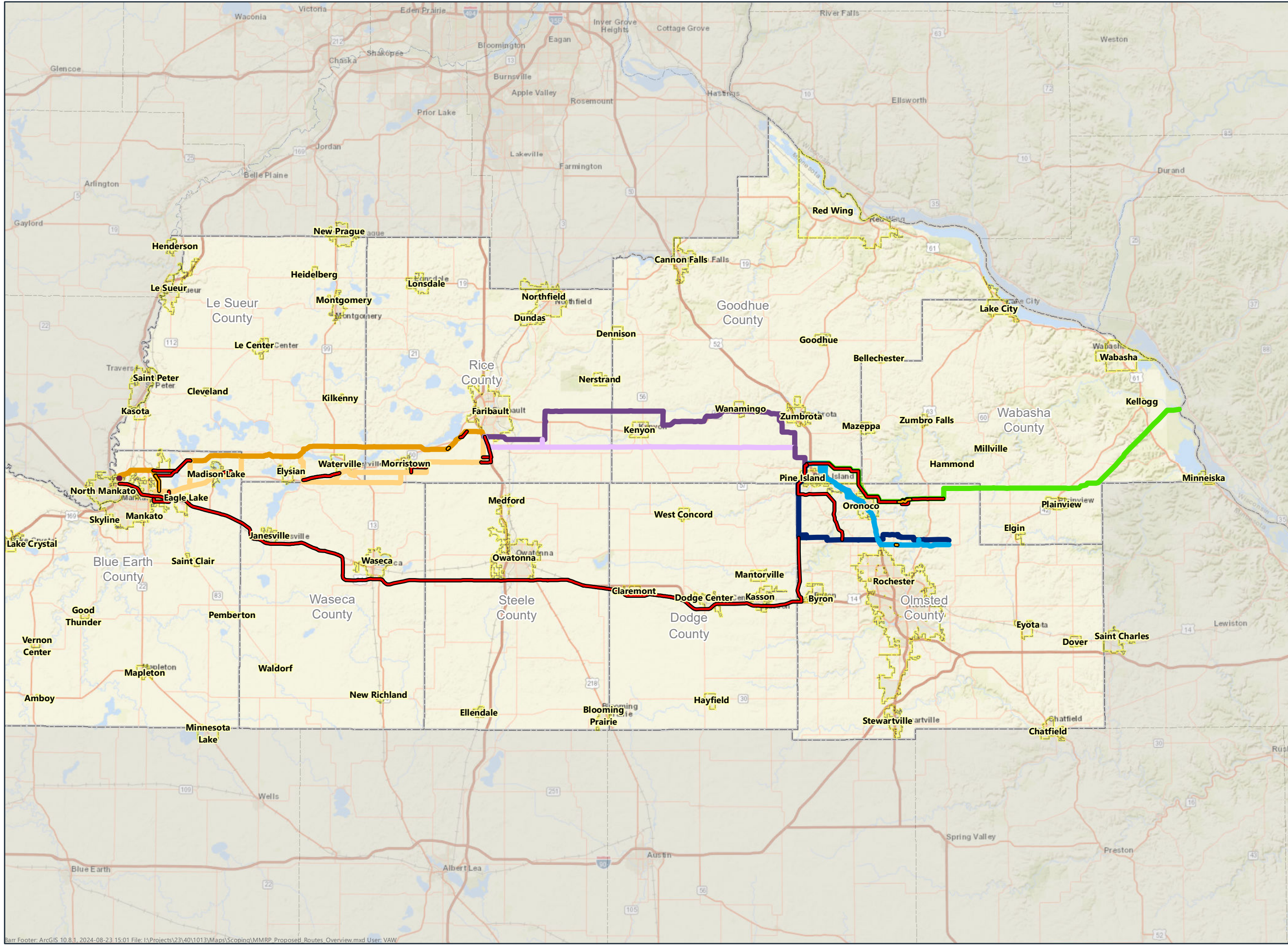
To EERA staff’s understanding, if the Commission concurs or takes no action, the Department will proceed to finalize and issue an EIS scoping decision. If the Commission takes an action other than concurring and modifies the Department’s recommendations, the Department will incorporate the Commission’s input and will finalize and issue an EIS scoping decision that reflects this input.

²⁴ Comment 87; eDockets No. [20249-210198-07](#)

Attachment 1

Maps

- Map 1 Applicant-Proposed Project Overview
- Map 2 Scoping Alternatives Mapbook

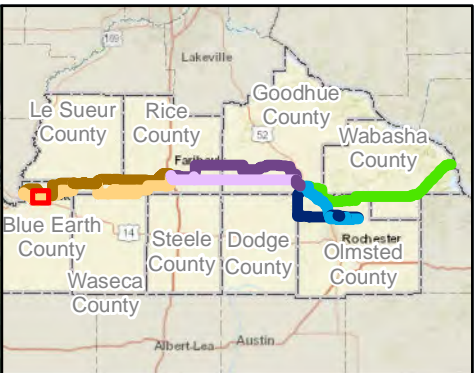


- Route Segment
- Alignment Alternative
- New termination MEC-WLM
- 1 North
- 1 South
- 2 North
- 2 South
- 3
- 4 East
- 4 West
- Municipal Boundary
- County Boundary

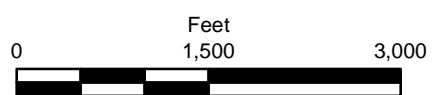


**APPLICANT-PROPOSED
PROJECT OVERVIEW**
Mankato to the
Mississippi River Project

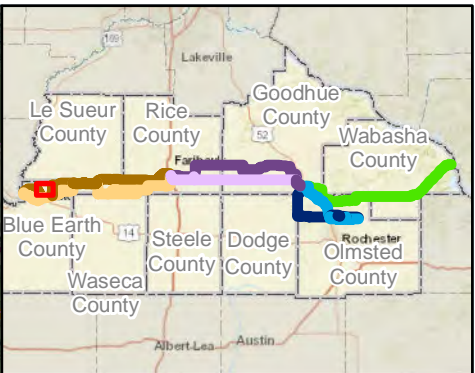
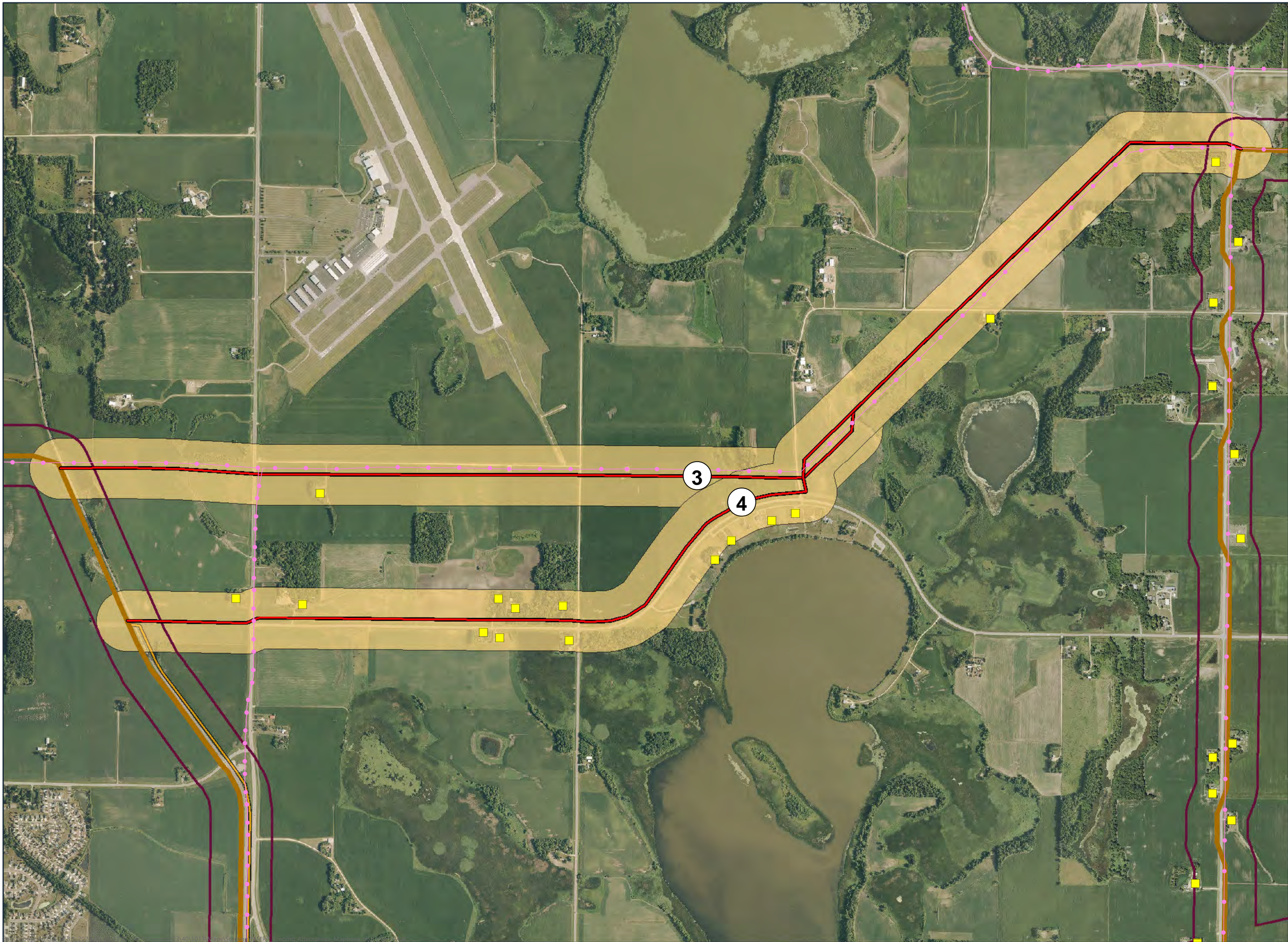
Barr Footer: ArcGIS 10.8.1, 2024-08-23 15:01 File: I:\Projects\23\40\1013\Maps\Scoping\MMRP_Proposed_Routes_Overview.mxd User: VAW



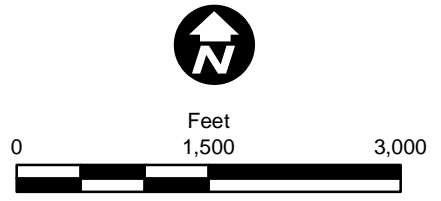
-  Route Segment
-  Alignment Alternative
-  1 North
-  1 South
-  2 North
-  2 South
-  3
-  4 East
-  4 West
-  Proposed Route Width
-  Alternative Width
-  Existing Transmission Line
-  Substation
-  Residence Location



ALTERNATIVES 1 & 2
 Scoping Alternatives
 Mankato to the
 Mississippi River Project

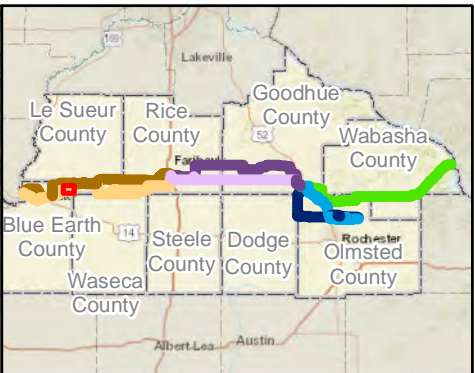
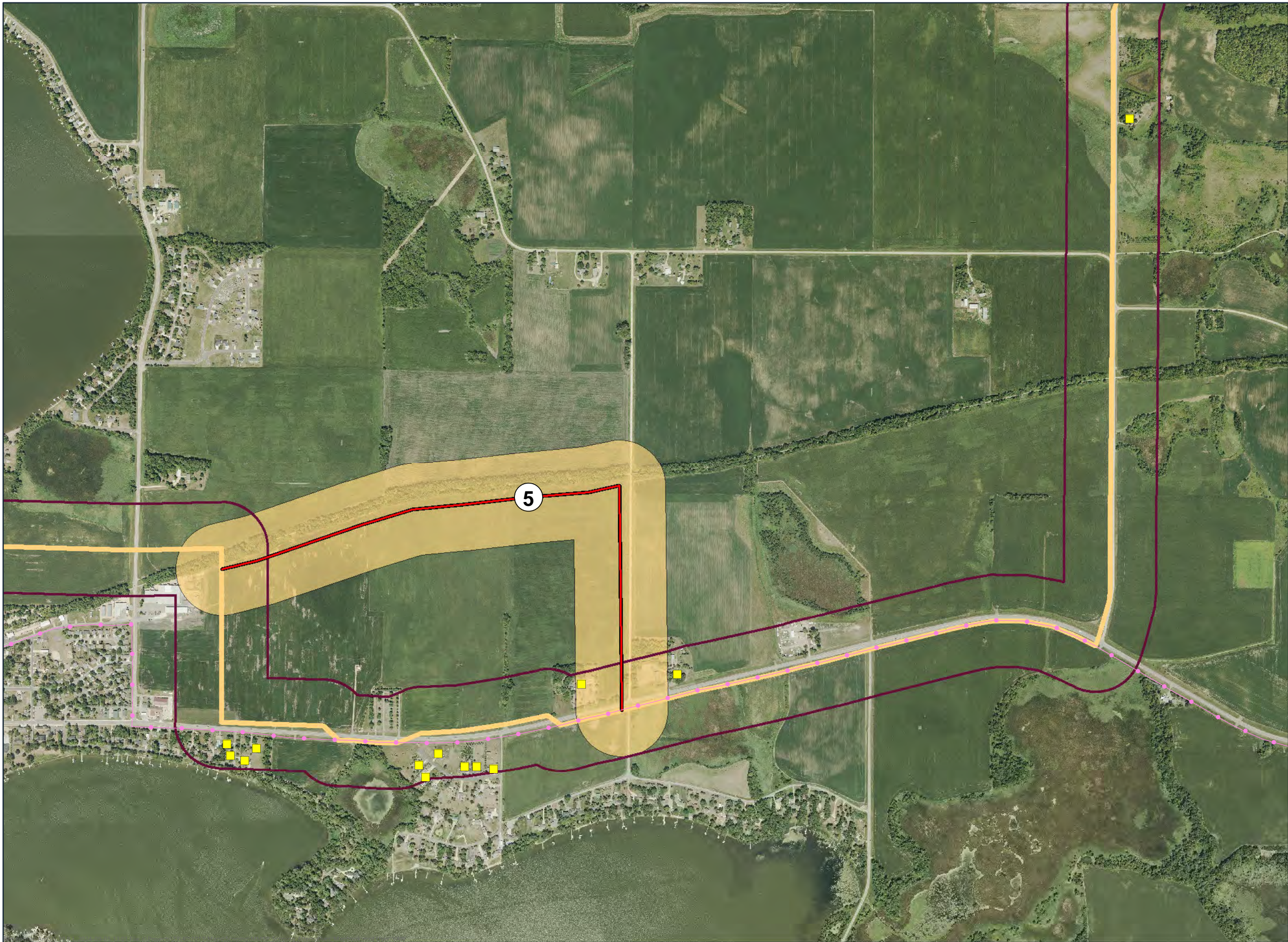


- Route Segment
- Alignment Alternative
- 1 North
- 1 South
- 2 North
- 2 South
- 3
- 4 East
- 4 West
- Proposed Route Width
- Alternative Width
- Existing Transmission Line
- Residence Location

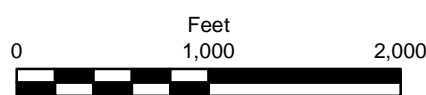


ALTERNATIVES 3 & 4
 Scoping Alternatives
 Mankato to the
 Mississippi River Project

Map 2-2

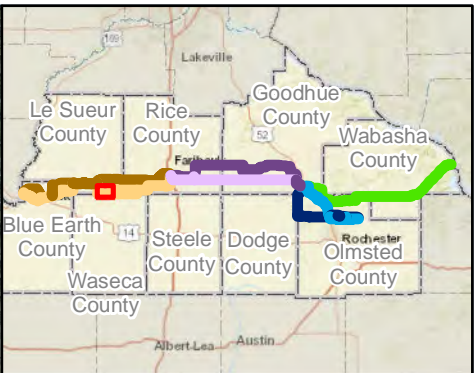
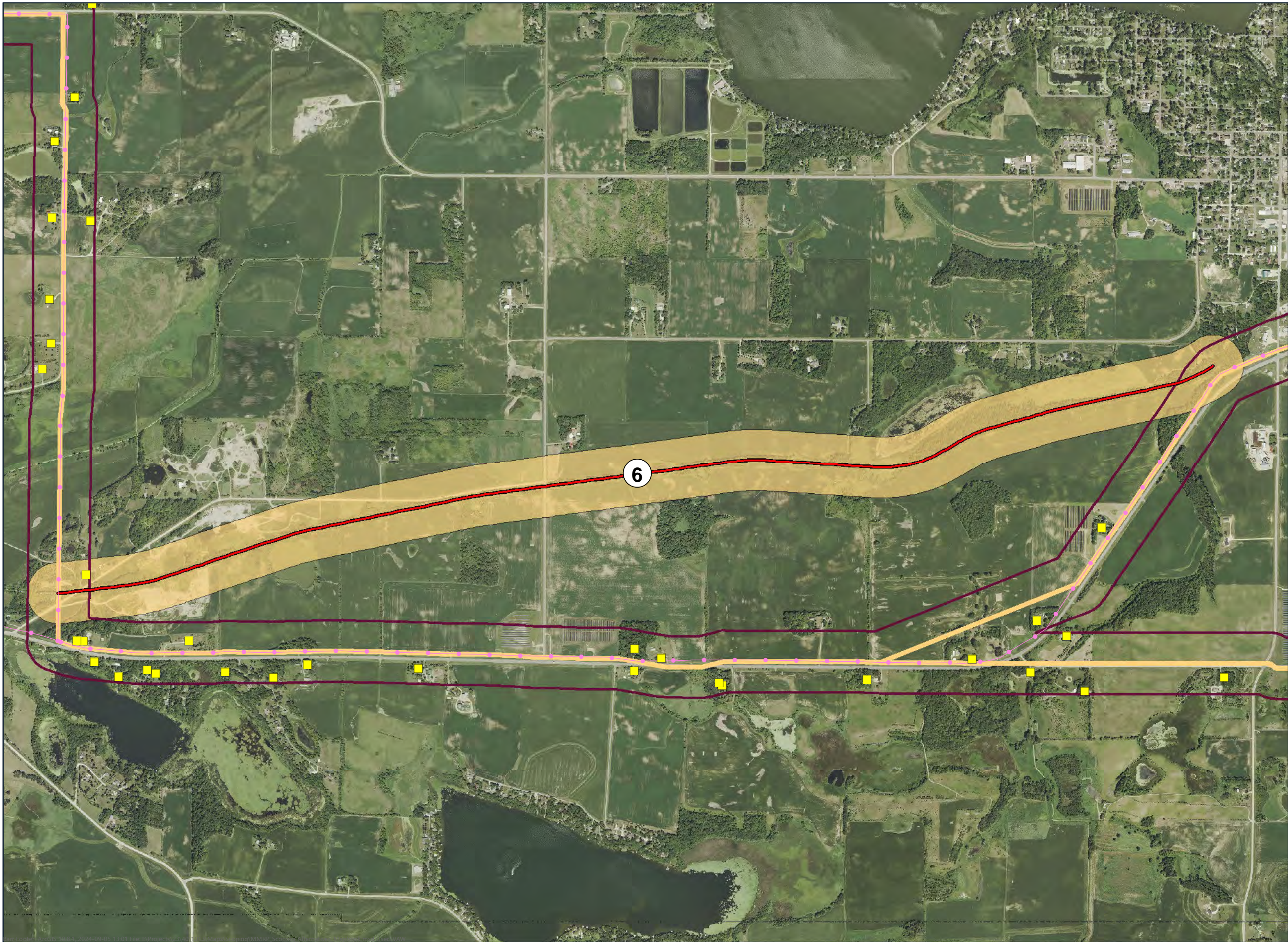



-  Route Segment
-  Alignment Alternative
-  1 North
-  1 South
-  2 North
-  2 South
-  3
-  4 East
-  4 West
-  Proposed Route Width
-  Alternative Width
-  Existing Transmission Line
-  Residence Location

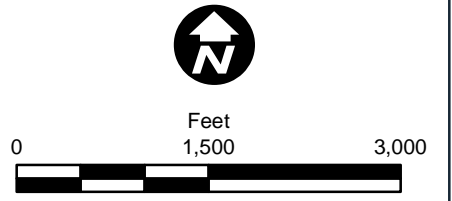


ALTERNATIVE 5
 Scoping Alternatives
 Mankato to the
 Mississippi River Project

Map 2-3

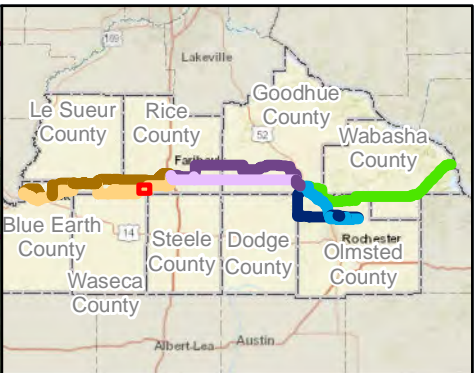
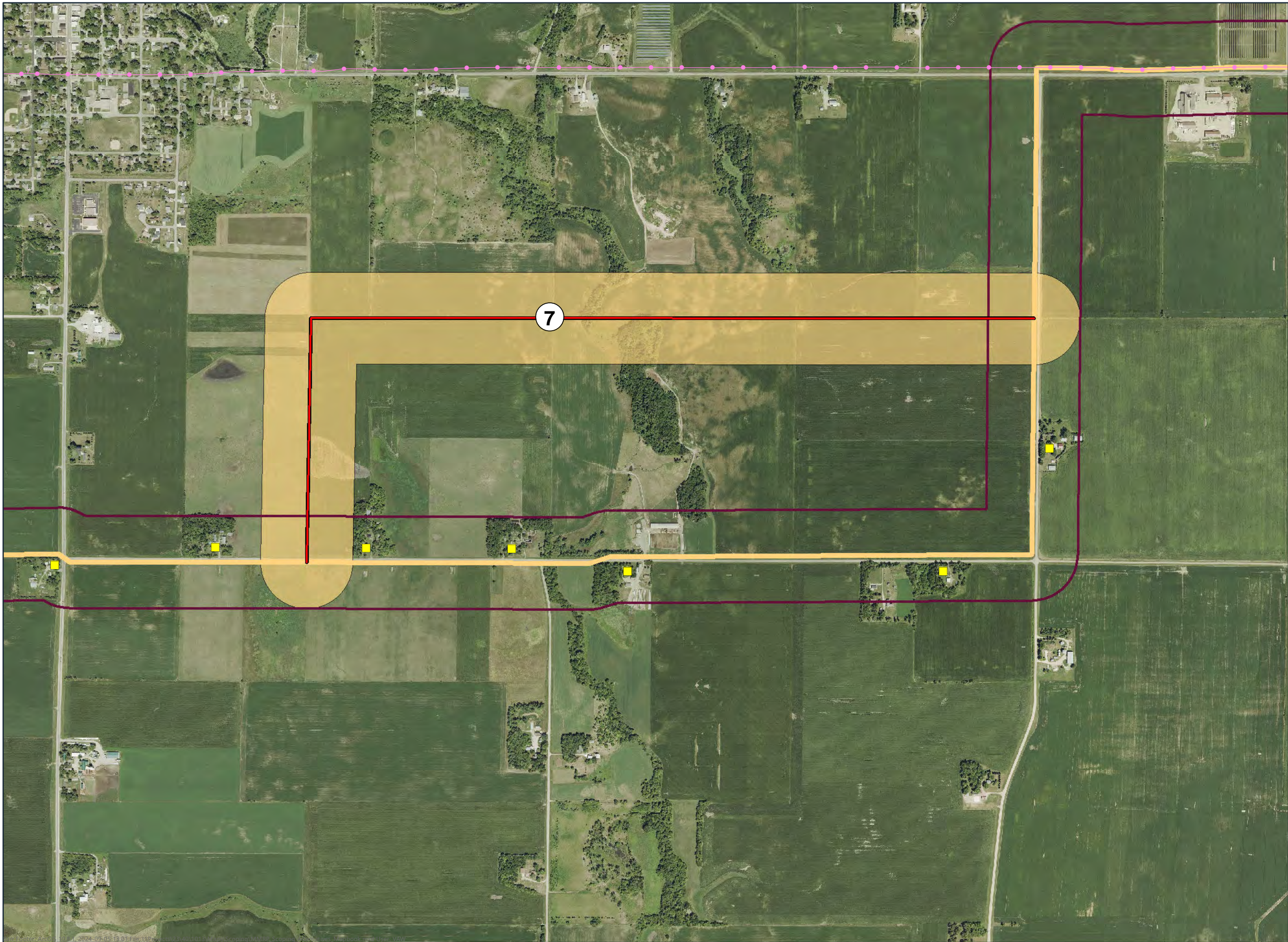


-  Route Segment
-  Alignment Alternative
-  1 North
-  1 South
-  2 North
-  2 South
-  3
-  4 East
-  4 West
-  Proposed Route Width
-  Alternative Width
-  Existing Transmission Line
-  Residence Location

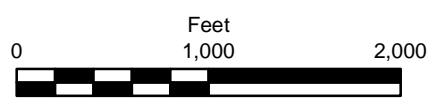


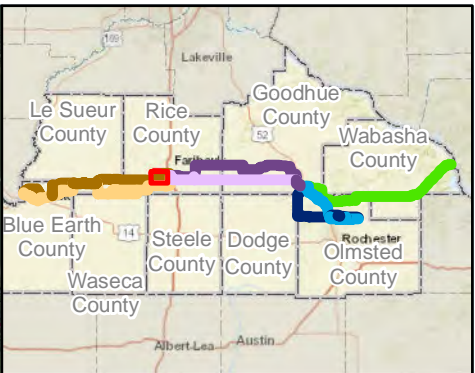
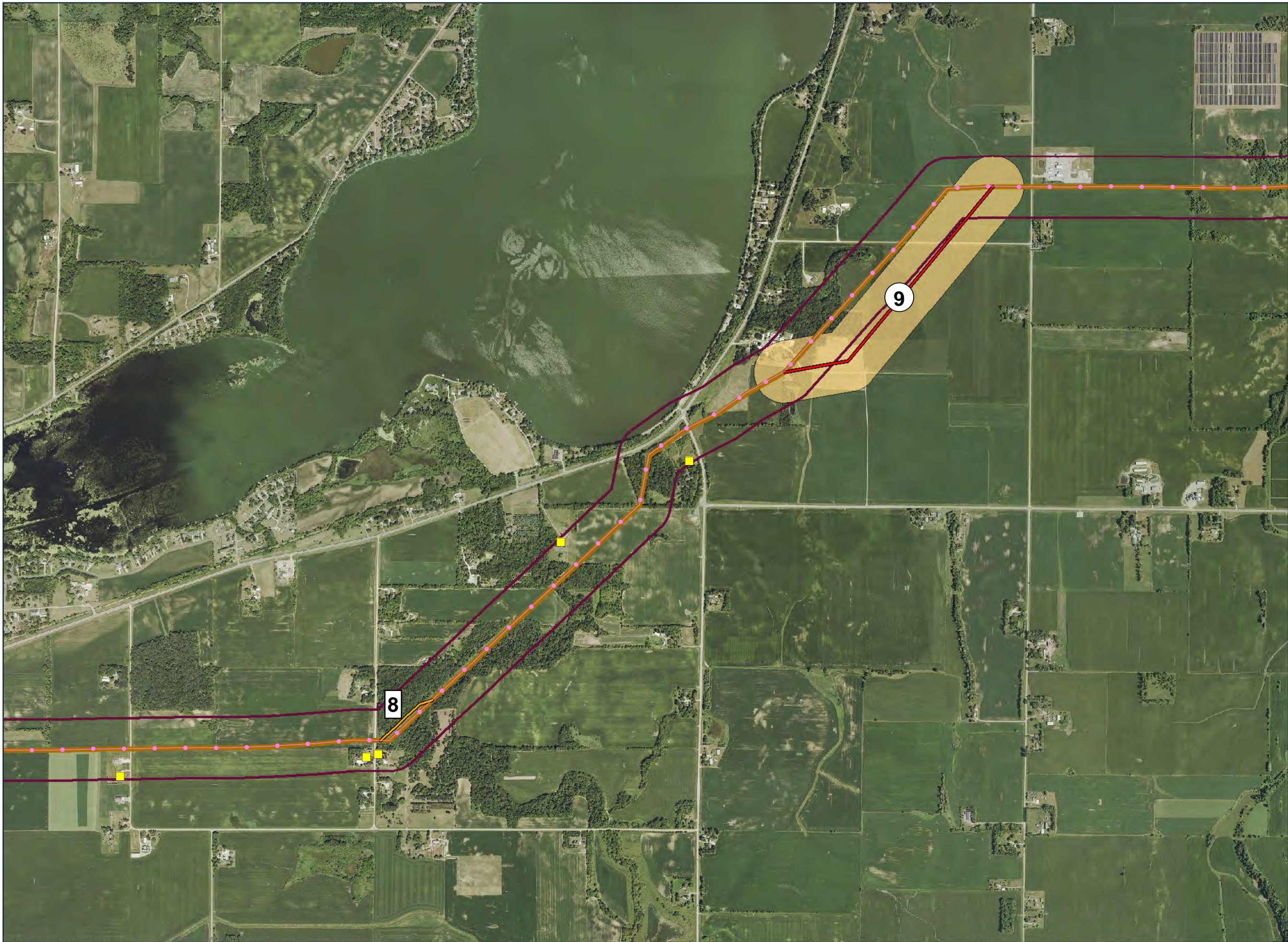
ALTERNATIVE 6
 Scoping Alternatives
 Mankato to the
 Mississippi River Project

Map 2-4

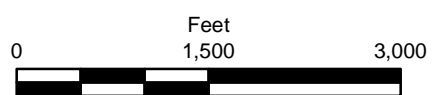


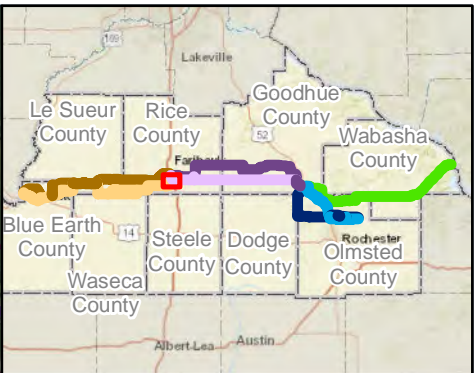
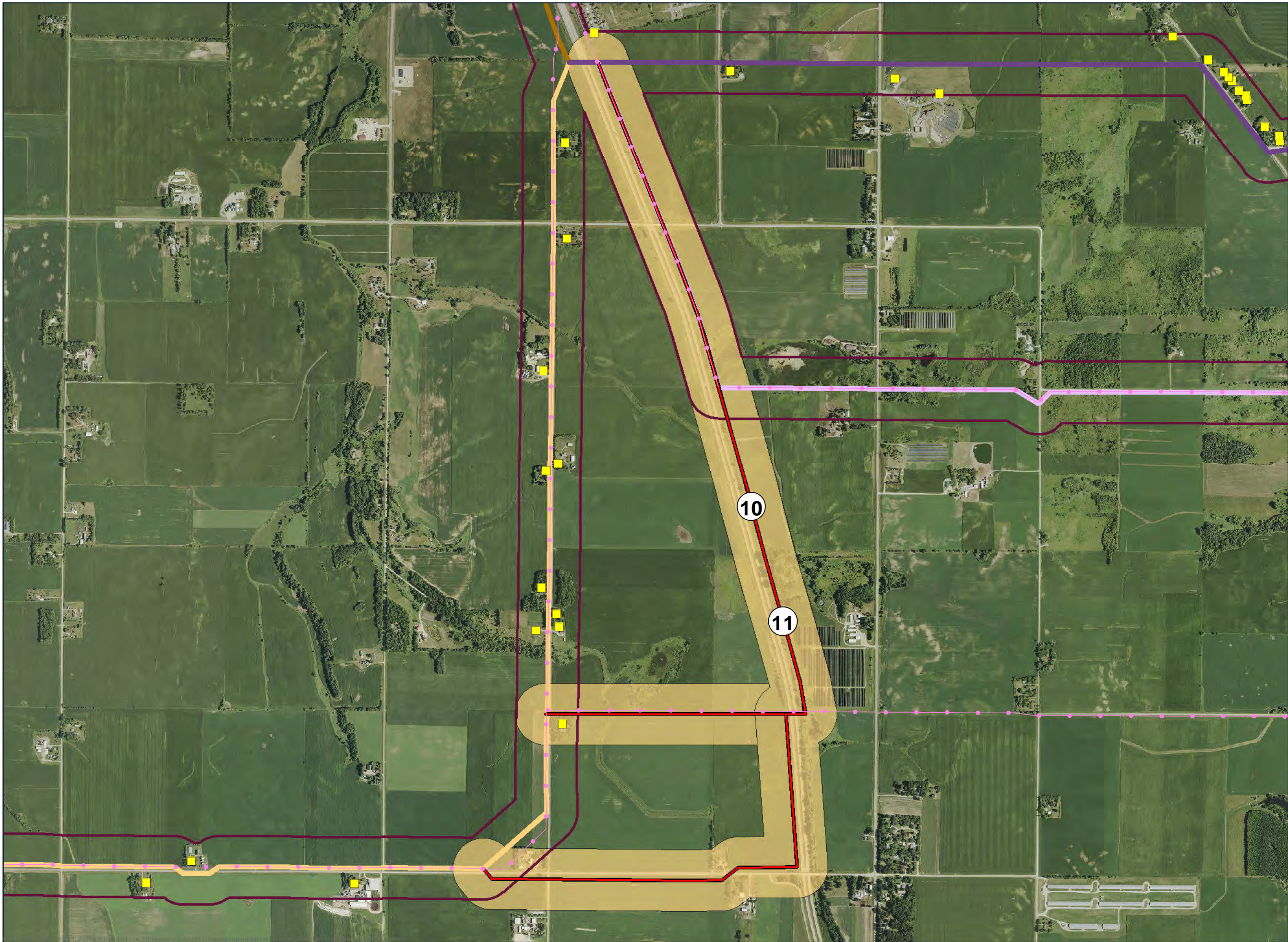
-  Route Segment
-  Alignment Alternative
-  1 North
-  1 South
-  2 North
-  2 South
-  3
-  4 East
-  4 West
-  Proposed Route Width
-  Alternative Width
-  Existing Transmission Line
-  Residence Location



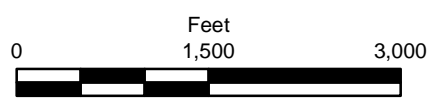


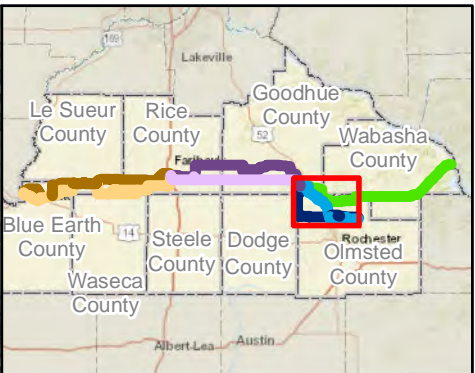
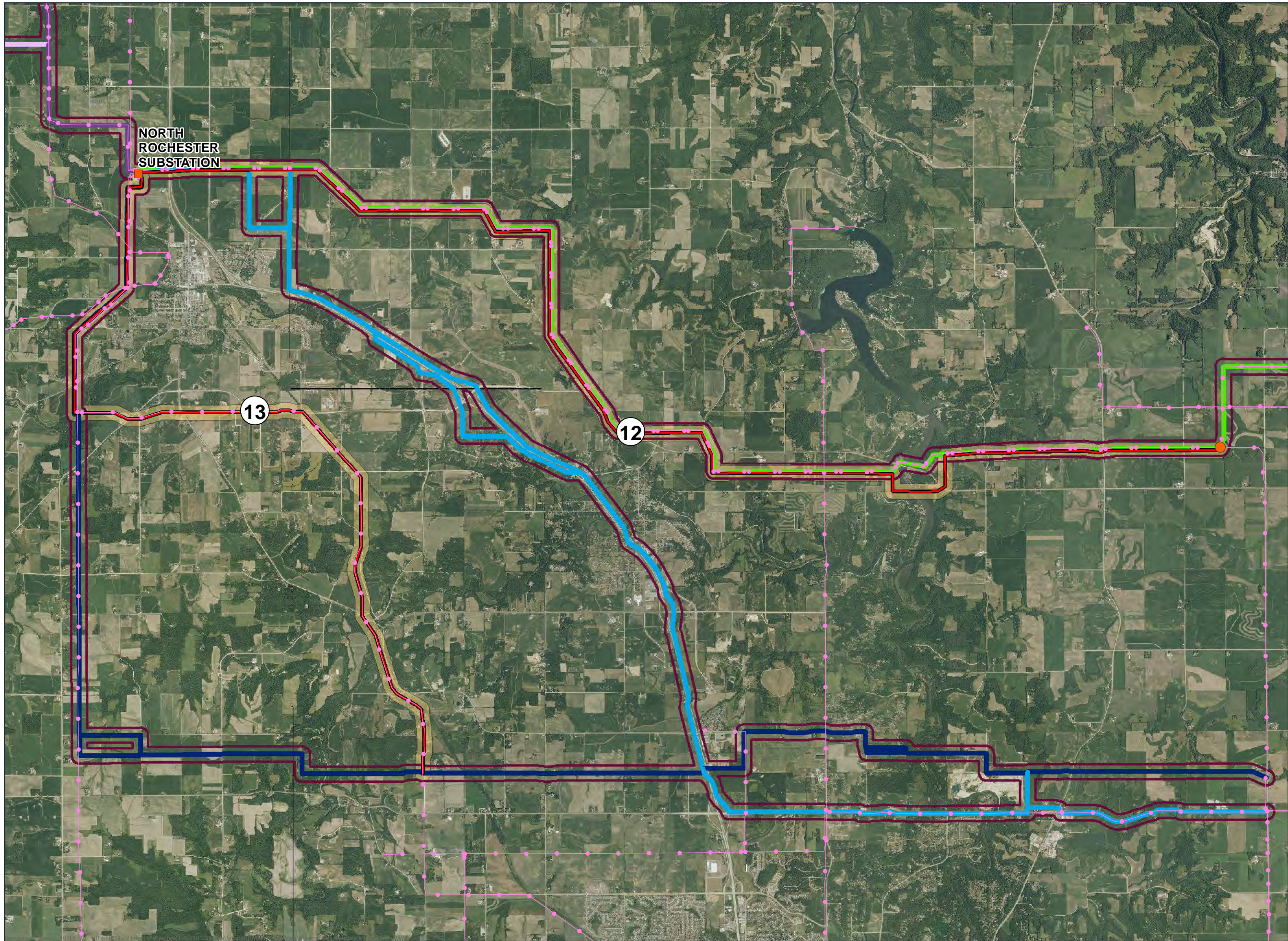
- Route Segment
- Alignment Alternative
- 1 North
- 1 South
- 2 North
- 2 South
- 3
- 4 East
- 4 West
- Proposed Route Width
- Alternative Width
- Existing Transmission Line
- Residence Location





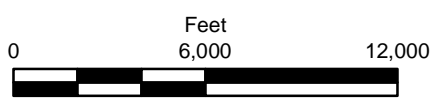


-  Route Segment
-  Alignment Alternative
-  1 North
-  1 South
-  2 North
-  2 South
-  3
-  4 East
-  4 West
-  Proposed Route Width
-  Alternative Width
-  Existing Transmission Line
-  Residence Location

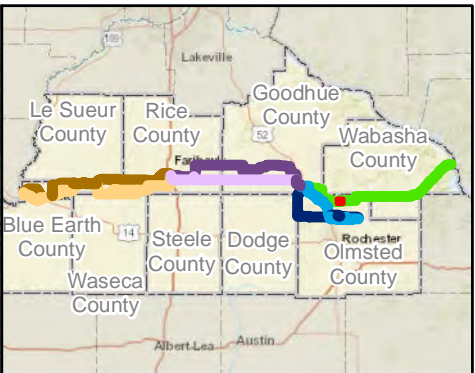
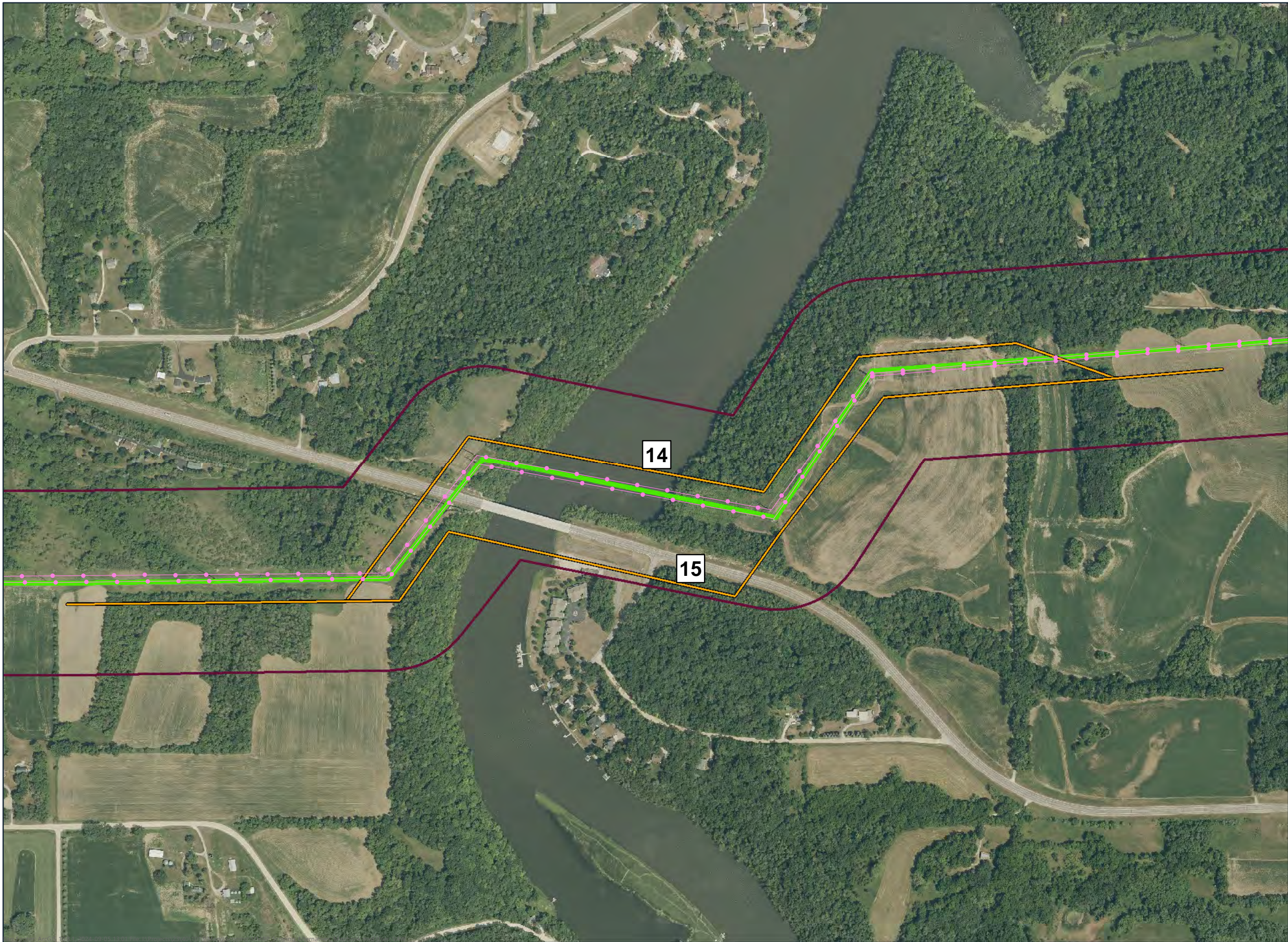




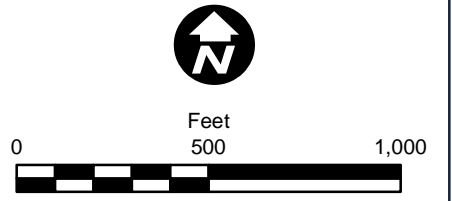
-  Route Segment
-  Alignment Alternative
-  1 North
-  1 South
-  2 North
-  2 South
-  3
-  4 East
-  4 West
-  Proposed Route Width
-  Alternative Width
-  Existing Transmission Line
-  Junction
-  Substation



ALTERNATIVES 12 & 13
 Scoping Alternatives
 Mankato to the
 Mississippi River Project

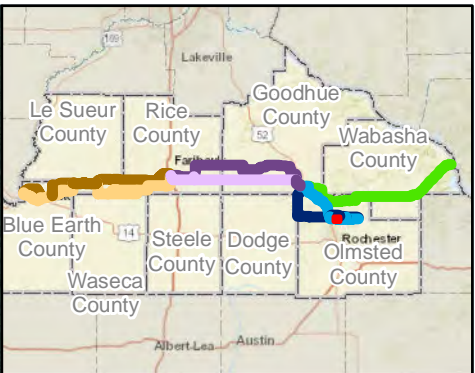


- Route Segment
- Alignment Alternative
- 1 North
- 1 South
- 2 North
- 2 South
- 3
- 4 East
- 4 West
- Proposed Route Width
- Existing Transmission Line

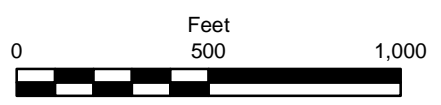


ALTERNATIVES 14 & 15
 Scoping Alternatives
 Mankato to the
 Mississippi River Project

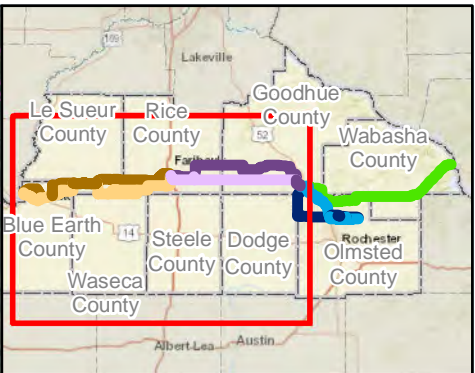
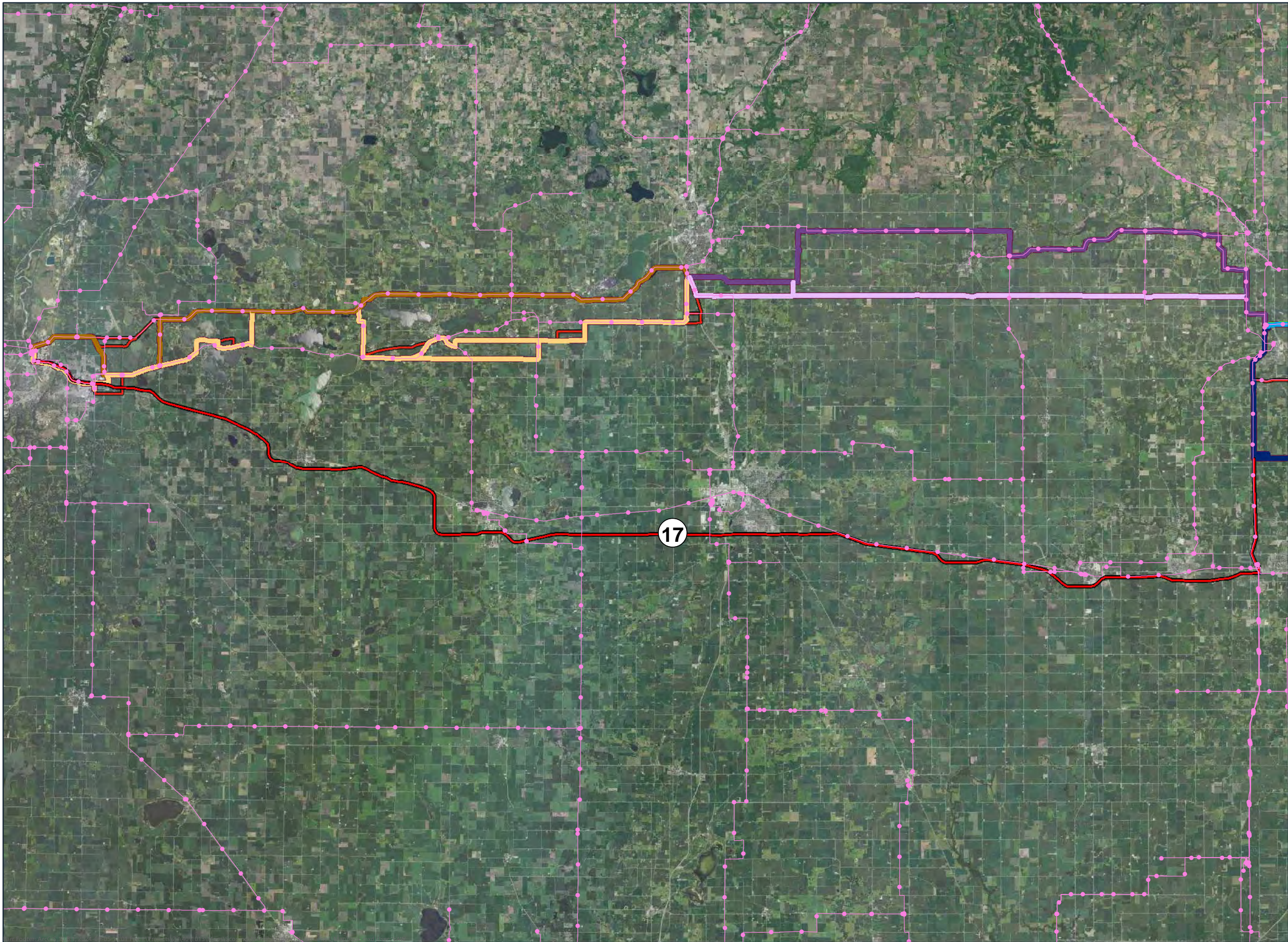
Map 2-9



- Route Segment
- Alignment Alternative
- 1 North
- 1 South
- 2 North
- 2 South
- 3
- 4 East
- 4 West
- Proposed Route Width
- Existing Transmission Line
- Residence Location



ALTERNATIVE 16
 Scoping Alternatives
 Mankato to the
 Mississippi River Project



- Route Segment
- Alignment Alternative
- 1 North
- 1 South
- 2 North
- 2 South
- 3
- 4 East
- 4 West
- Proposed Route Width
- Alternative Width
- Existing Transmission Line



CERTIFICATE OF SERVICE

I, Sharon Ferguson, hereby certify that I have this day, served copies of the following document on the attached list of persons by electronic filing, certified mail, e-mail, or by depositing a true and correct copy thereof properly enveloped with postage paid in the United States Mail at St. Paul, Minnesota.

Minnesota Department of Commerce

Comments

Docket No. E002/CN-22-532 and E002/TL-23-157

Dated this **19th** day of **September 2024**

/s/Sharon Ferguson

First Name	Last Name	Email	Company Name	Address	Delivery Method	View Trade Secret	Service List Name
Michael	Ahern	ahern.michael@dorsey.com	Dorsey & Whitney, LLP	50 S 6th St Ste 1500 Minneapolis, MN 554021498	Electronic Service	No	OFF_SL_22-532_Official CC Service List
Steve	Albrecht	Steve.Albrecht@shakopee dakota.org	Shakopee Mdewakanton Sioux Community	Shakopee Mdewakanton Sioux Community 2330 Sioux Trail NW Prior Lake, MN 55372	Electronic Service	No	OFF_SL_22-532_Official CC Service List
Kristine	Anderson	kanderson@greatermngas. com	Greater Minnesota Gas, Inc. & Greater MN Transmission, LLC	1900 Cardinal Lane PO Box 798 Faribault, MN 55021	Electronic Service	No	OFF_SL_22-532_Official CC Service List
Keith	Anderson	keith.anderson@shakopee dakota.org	Shakopee Mdewakanton Sioux Community	Shakopee Mdewakanton Sioux Community 2330 Sioux Trail NW Prior Lake, MN 55372	Electronic Service	No	OFF_SL_22-532_Official CC Service List
Jay	Anderson	jaya@cmpas.org	CMPAS	7550 Corporate Way Suite 100 Eden Prairie, MN 55344	Electronic Service	No	OFF_SL_22-532_Official CC Service List
Katherine	Arnold	katherine.arnold@ag.state. mn.us	Office of the Attorney General-DOC	445 Minnesota Street Suite 1400 St. Paul, MN 55101	Electronic Service	No	OFF_SL_22-532_Official CC Service List
Jaime	Arsenault	jaime.arsenault@whiteear thnsn.gov	White Earth	PO BOX 418 White Earth, MN 56591	Electronic Service	No	OFF_SL_22-532_Official CC Service List
Mara	Ascheman	mara.k.ascheman@xcelen ergy.com	Xcel Energy	414 Nicollet Mall Fl 5 Minneapolis, MN 55401	Electronic Service	Yes	OFF_SL_22-532_Official CC Service List
David	Bell	david.bell@state.mn.us	Department of Health	POB 64975 St. Paul, MN 55164	Electronic Service	No	OFF_SL_22-532_Official CC Service List
Melanie	Benjamin	melanie.benjamin@millelac sband.com	Mille Lacs Band of Ojibwe	43408 Odena Drive Onamia, MN 56359	Electronic Service	No	OFF_SL_22-532_Official CC Service List

First Name	Last Name	Email	Company Name	Address	Delivery Method	View Trade Secret	Service List Name
James J.	Bertrand	james.bertrand@stinson.com	STINSON LLP	50 S 6th St Ste 2600 Minneapolis, MN 55402	Electronic Service	No	OFF_SL_22-532_Official CC Service List
David	Birkholz	david.birkholz@state.mn.us	MN Department of Commerce	Suite 500 85 7th Place East St. Paul, MN 551012198	Electronic Service	No	OFF_SL_22-532_Official CC Service List
Michelle F.	Bissonnette	michelle.bissonnette@hdrinc.com	HDR Engineering, Inc.	Golden Hills Office Center 701 Xenia Ave S Ste 600 Minneapolis, MN 55416	Electronic Service	No	OFF_SL_22-532_Official CC Service List
Hunter	Boldt	hunterboldt@redlakenation.org	Red Lake Nation	15484 Migizi Drive Red Lake, MN 56671	Electronic Service	No	OFF_SL_22-532_Official CC Service List
Sheldon	Boyd	sheldon.boyd@millelacsband.com	Mille Lacs Band of Ojibwe	43408 Oodena Drive Onamia, MN 56359	Electronic Service	No	OFF_SL_22-532_Official CC Service List
B. Andrew	Brown	brown.andrew@dorsey.com	Dorsey & Whitney LLP	Suite 1500 50 South Sixth Street Minneapolis, MN 554021498	Electronic Service	No	OFF_SL_22-532_Official CC Service List
Christina	Brusven	cbrusven@fredlaw.com	Fredrikson Byron	60 S 6th St Ste 1500 Minneapolis, MN 55402-4400	Electronic Service	No	OFF_SL_22-532_Official CC Service List
Scott	Buchanan	ScottBuchanan@fdlrez.com	Fond du Lac Band of Lake Superior Chippewa	1720 Big Lake Road Cloquet, MN 55720	Electronic Service	No	OFF_SL_22-532_Official CC Service List
Shelley	Buck	shelley.buck@piic.org	Prairie Island Indian Community	Prairie Island Indian Community 5636 Sturgeon Lake Road Welch, MN 55089	Electronic Service	No	OFF_SL_22-532_Official CC Service List
Robert	Budreau	robert.budreau@llojibwe.net	Leech Lake Band of Ojibwe	190 Sailstar Drive NW Cass Lake, MN 56633	Electronic Service	No	OFF_SL_22-532_Official CC Service List

First Name	Last Name	Email	Company Name	Address	Delivery Method	View Trade Secret	Service List Name
PUC	CAO	consumer.puc@state.mn.us	Public Utilities Commission	Consumer Affairs Office 121 7th Place E Suite 350 St. Paul, MN 55101	Electronic Service	No	OFF_SL_22-532_Official CC Service List
James	Canaday	james.canaday@ag.state.mn.us	Office of the Attorney General-RUD	Suite 1400 445 Minnesota St. St. Paul, MN 55101	Electronic Service	No	OFF_SL_22-532_Official CC Service List
Cathy	Chavers	cchavers@boisforten-sn.gov	Bois Forte Band of Chippewa	Bois Forte Tribal Government 5344 Lakeshore Drive Nett Lake, MN 55772	Electronic Service	No	OFF_SL_22-532_Official CC Service List
Michael	Childs, Jr.	michael.childsjr@piic.org	Prairie Island Indian Community	Prairie Island Indian Community 5636 Sturgeon Lake Road Welch, MN 55089	Electronic Service	No	OFF_SL_22-532_Official CC Service List
Cody	Chilson	cchilson@greatermngas.com	Greater Minnesota Gas, Inc. & Greater MN Transmission, LLC	1900 Cardinal Ln PO Box 798 Faribault, MN 55021	Electronic Service	No	OFF_SL_22-532_Official CC Service List
Ray	Choquette	rchoquette@agp.com	Ag Processing Inc.	12700 West Dodge Road PO Box 2047 Omaha, NE 68103-2047	Electronic Service	No	OFF_SL_22-532_Official CC Service List
John	Coffman	john@johncoffman.net	AARP	871 Tuxedo Blvd. St. Louis, MO 63119-2044	Electronic Service	No	OFF_SL_22-532_Official CC Service List
Generic Notice	Commerce Attorneys	commerce.attorneys@ag.state.mn.us	Office of the Attorney General-DOC	445 Minnesota Street Suite 1400 St. Paul, MN 55101	Electronic Service	Yes	OFF_SL_22-532_Official CC Service List
Bill	Cook	bcook@rpu.org	Rochester Public Utilities	4000 East River Road NE Rochester, MN 55906	Electronic Service	No	OFF_SL_22-532_Official CC Service List

First Name	Last Name	Email	Company Name	Address	Delivery Method	View Trade Secret	Service List Name
Sean	Copeland	seancopeland@fdlrez.com	Fond du Lac Band of Lake Superior Chippewa	1720 Big Lake Rd Cloquet, MN 55720	Electronic Service	No	OFF_SL_22-532_Official CC Service List
John	Crane	johncranefishing@gmail.com	Fishing	1250 Wee Gaus DR SW Bemidji, MN 56601	Electronic Service	No	OFF_SL_22-532_Official CC Service List
Hillary	Creurer	hcreurer@mnpower.com	Minnesota Power	30 W Superior St Duluth, MN 55802	Electronic Service	No	OFF_SL_22-532_Official CC Service List
George	Crocker	gwillc@nawo.org	North American Water Office	5093 Keats Avenue Lake Elmo, MN 55042	Electronic Service	No	OFF_SL_22-532_Official CC Service List
Rebecca	Crooks Stratton	Rebecca.Crooks-Stratton@ShakopeeDakota.org	Shakopee Mdewakanton Sioux Community	Shakopee Mdewakanton Sioux Community 2330 Sioux Trail NW Prior Lake, MN 55372	Electronic Service	No	OFF_SL_22-532_Official CC Service List
Miyah	Danielson	MiyahDanielson@FDLREZ.COM	Fond du Lac Band of Lake Superior Chippewa	1720 Big Lake Road Cloquet, MN 55720	Electronic Service	No	OFF_SL_22-532_Official CC Service List
Brent	Dauk	brentdauk@aol.com		140 438th Ave Moose Lake, MN 56063	Electronic Service	No	OFF_SL_22-532_Official CC Service List
Thomas	Davis	atdavis1972@outlook.com	-	1161 50th Ave Sherburn, MN 56171	Electronic Service	No	OFF_SL_22-532_Official CC Service List
Seth	DeMerritt	Seth.DeMerritt@centerpointenergy.com	CenterPoint Energy Minnesota Gas	505 Nicollet Mall Minneapolis, MN 55402	Electronic Service	No	OFF_SL_22-532_Official CC Service List
Jason	Decker	jason.decker@llojbwe.net	Leech Lake Band of Ojibwe	190 Sailstar Drive NW Cass Lake, MN 56633	Electronic Service	No	OFF_SL_22-532_Official CC Service List

First Name	Last Name	Email	Company Name	Address	Delivery Method	View Trade Secret	Service List Name
Bobby	Deschampe	robertdeschampe@grandportage.com	Grand Portage Band of Lake Superior Chippewa	PO Box 428 Grand Portage, MN 55605	Electronic Service	No	OFF_SL_22-532_Official CC Service List
Randall	Doneen	randall.doneen@state.mn.us	Department of Natural Resources	500 Lafayette Rd, PO Box 25 Saint Paul, MN 55155	Electronic Service	No	OFF_SL_22-532_Official CC Service List
John	Drawz	jdrawz@fredlaw.com	Fredrikson & Byron, P.A.	Suite 1500 60 South Sixth Street Minneapolis, MN 55402-4400	Electronic Service	No	OFF_SL_22-532_Official CC Service List
Shane	Drift	sdrift@boisforte-nsn.gov	Bois Forte Band of Chippewa	Bois Forte Tribal Government 5344 Lakeshore Drive Nett Lake, MN 55772	Electronic Service	No	OFF_SL_22-532_Official CC Service List
Wally	Dupuis	wallydupuis@fdlband.org	Fond du Lac Band of Lake Superior Chippewa	1720 Big Lake Road Cloquet, MN 55720	Electronic Service	No	OFF_SL_22-532_Official CC Service List
Kevin	Dupuis, Sr.	kevindupuis@fdlrez.com	Fond du Lac Development Corp.	Reservation Business Committee 1720 Big Lake Rd Cloquet, MN 55720	Electronic Service	No	OFF_SL_22-532_Official CC Service List
Cory	Dutcher	cory.dutcher@ge.com	GE Power and Water	1 River Rd. Bldg. 37-413 Schenectady, NY 12345	Electronic Service	No	OFF_SL_22-532_Official CC Service List
Jamie	Edwards	jamie.edwards@millelacsband.com	Mille Lacs Band of Ojibwe	43408 Oodena Drive Onamia, MN 56358	Electronic Service	No	OFF_SL_22-532_Official CC Service List
Kristen	Eide Tollefson	healingsystems69@gmail.com	R-CURE	28477 N Lake Ave Frontenac, MN 55026-1044	Electronic Service	No	OFF_SL_22-532_Official CC Service List

First Name	Last Name	Email	Company Name	Address	Delivery Method	View Trade Secret	Service List Name
Bret	Eknes	bret.eknes@state.mn.us	Public Utilities Commission	Suite 350 121 7th Place East St. Paul, MN 551012147	Electronic Service	No	OFF_SL_22-532_Official CC Service List
Michael	Fairbanks	Michael.Fairbanks@whiteearth-nsn.gov	White Earth Reservation Business Committee	PO Box 418 White Earth, MN 56591	Electronic Service	No	OFF_SL_22-532_Official CC Service List
Kyle	Fairbanks	kyle.fairbanks@llojibwe.net	Leech Lake Band of Ojibwe	190 Sailstar Drive NW Cass Lake, MN 56633	Electronic Service	No	OFF_SL_22-532_Official CC Service List
Kate	Fairman	kate.fairman@state.mn.us	Department of Natural Resources	Box 32 500 Lafayette Rd St. Paul, MN 551554032	Electronic Service	No	OFF_SL_22-532_Official CC Service List
John	Farrell	jfarrell@ilsr.org	Institute for Local Self- Reliance	2720 E. 22nd St Institute for Local Self- Reliance Minneapolis, MN 55406	Electronic Service	No	OFF_SL_22-532_Official CC Service List
Eric	Fehlhaber	efehlhaber@dakotaelectric.com	Dakota Electric Association	4300 220th St W Farmington, MN 55024	Electronic Service	No	OFF_SL_22-532_Official CC Service List
Annie	Felix Gerth	annie.felix-gerth@state.mn.us		Board of Water & Soil Resources 520 Lafayette Rd Saint Paul, MN 55155	Electronic Service	No	OFF_SL_22-532_Official CC Service List
Sharon	Ferguson	sharon.ferguson@state.mn.us	Department of Commerce	85 7th Place E Ste 280 Saint Paul, MN 551012198	Electronic Service	No	OFF_SL_22-532_Official CC Service List
Kade	Ferris	kade.ferris@redlakenation.org	Red Lake Region	PO Box 274 Red Lake, MN 56671	Electronic Service	No	OFF_SL_22-532_Official CC Service List

First Name	Last Name	Email	Company Name	Address	Delivery Method	View Trade Secret	Service List Name
Leonard	Fineday	leonard.fineday@llojibwe.net	Leech Lake Bank of Ojibwe	190 Sailstar Drive NW Cass Lake, MN 56633	Electronic Service	No	OFF_SL_22-532_Official CC Service List
Terri	Finn	terri.goggleye@llojibwe.net	Leech Lake Band of Ojibwe	N/A	Electronic Service	No	OFF_SL_22-532_Official CC Service List
Henry	Fox	henry.fox@whiteearth-nsn.gov	White Earth Nation	PO Box 418 White Earth, MN 56569	Electronic Service	No	OFF_SL_22-532_Official CC Service List
Gary	Frazer	gfrazier@mnchippewatribe.org	Minnesota Chippewa Tribe	PO Box 217 Cass Lake, MN 56633	Electronic Service	No	OFF_SL_22-532_Official CC Service List
Daryll	Fuentes	energy@usg.com	USG Corporation	550 W Adams St Chicago, IL 60661	Electronic Service	No	OFF_SL_22-532_Official CC Service List
Mary Ann	Gagnon	maryann@grandportage.com	Grand Portage Band of Ojibwe	PO Box 428 Grand Portage, MN 55605	Electronic Service	No	OFF_SL_22-532_Official CC Service List
Edward	Garvey	edward.garvey@AESLconsulting.com	AESL Consulting	32 Lawton St Saint Paul, MN 55102-2617	Electronic Service	No	OFF_SL_22-532_Official CC Service List
Karen A	Gebhardt	kageb1@gvtel.com		43901 253rd Ave Leonard, MN 56652-4026	Electronic Service	No	OFF_SL_22-532_Official CC Service List
Shannon	Geshick	shannon.geshick@state.mn.us	Minnesota Indian Affairs Council (MIAC)	N/A	Electronic Service	No	OFF_SL_22-532_Official CC Service List
Todd	Green	Todd.A.Green@state.mn.us	Minnesota Department of Labor & Industry	443 Lafayette Rd N St. Paul, MN 55155-4341	Electronic Service	No	OFF_SL_22-532_Official CC Service List
Todd J.	Guerrero	todd.guerrero@kutakrock.com	Kutak Rock LLP	Suite 1750 220 South Sixth Street Minneapolis, MN 554021425	Electronic Service	No	OFF_SL_22-532_Official CC Service List

First Name	Last Name	Email	Company Name	Address	Delivery Method	View Trade Secret	Service List Name
Jeremy	Hamilton	jhamilton@uppersiouxcommunity-nsn.gov	Upper Sioux Community	Upper Sioux Community PO Box 147 Granite Falls, MN 56241	Electronic Service	No	OFF_SL_22-532_Official CC Service List
Ashley	Harrison	ashley.harrison@llojibwe.net	Leech Lake Band of Ojibwe	190 Sailstar Dr NW Cass Lake, MN 56633	Electronic Service	No	OFF_SL_22-532_Official CC Service List
Larry	Hartman	Larry.Hartman@state.mn.us	Department of Commerce	85 7th Place East, Suite 280 St. Paul, MN 55101	Electronic Service	No	OFF_SL_22-532_Official CC Service List
Amy	Hastings	amyh@uppersiouxcommunity-nsn.gov	Upper Sioux Community	5722 Travers Lane PO Box 147 Granite Falls, MN 56241	Electronic Service	No	OFF_SL_22-532_Official CC Service List
Ellen	Heine	ellen.l.heine@xcelenergy.com	Xcel Energy	414 Nicollet Mall, MP-8 Minneapolis, MN 55401	Electronic Service	No	OFF_SL_22-532_Official CC Service List
Adam	Heinen	aheinen@dakotaelectric.com	Dakota Electric Association	4300 220th St W Farmington, MN 55024	Electronic Service	No	OFF_SL_22-532_Official CC Service List
Abigail	Hencheck	ahencheck@mncenter.org	Minnesota Center for Environmental Advocacy	1919 University Ave W Suite 515 St. Paul, MN 55104	Electronic Service	No	OFF_SL_22-532_Official CC Service List
Annete	Henkel	mui@mutilityinvestors.org	Minnesota Utility Investors	413 Wacouta Street #230 St. Paul, MN 55101	Electronic Service	No	OFF_SL_22-532_Official CC Service List
Valerie	Herring	vherring@taftlaw.com	Taft Stettinius & Hollister LLP	2200 IDS Center 80 S. Eighth Street Minneapolis, MN 55402	Electronic Service	No	OFF_SL_22-532_Official CC Service List
Corey	Hintz	chintz@dakotaelectric.com	Dakota Electric Association	4300 220th Street Farmington, MN 550249583	Electronic Service	No	OFF_SL_22-532_Official CC Service List

First Name	Last Name	Email	Company Name	Address	Delivery Method	View Trade Secret	Service List Name
Michael	Hoppe	lu23@ibew23.org	Local Union 23, I.B.E.W.	445 Etna Street Ste. 61 St. Paul, MN 55106	Electronic Service	No	OFF_SL_22-532_Official CC Service List
Kari	Howe	kari.howe@state.mn.us	DEED	332 Minnesota St, #E200 1ST National Bank Bldg St. Paul, MN 55101	Electronic Service	No	OFF_SL_22-532_Official CC Service List
Lori	Hoyum	lhoyum@mnpower.com	Minnesota Power	30 West Superior Street Duluth, MN 55802	Electronic Service	No	OFF_SL_22-532_Official CC Service List
Annie	Jackson	Cheryl.Jackson@whiteearth-nsn.gov	White Earth Nation	White Earth Tribal Headquarters 35500 Eagle View Road Ogemo, MN 56569	Electronic Service	No	OFF_SL_22-532_Official CC Service List
Faron	Jackson, Sr.	faron.jackson@llojibwe.net	Leech Lake Band of Ojibwe	190 Sailstar Drive NW Cass Lake, MN 56633	Electronic Service	No	OFF_SL_22-532_Official CC Service List
Travis	Jacobson	travis.jacobson@mdu.com	Great Plains Natural Gas Company	400 N 4th St Bismarck, ND 58501	Electronic Service	No	OFF_SL_22-532_Official CC Service List
Alan	Jenkins	aj@jenkinsatlaw.com	Jenkins at Law	2950 Yellowtail Ave. Marathon, FL 33050	Electronic Service	No	OFF_SL_22-532_Official CC Service List
Kevin	Jensvold	kevinj@upperSiouxcommunity-nsn.gov	Upper Sioux Community	PO Box 147 Granite Falls, MN 56241-0147	Electronic Service	No	OFF_SL_22-532_Official CC Service List
Richard	Johnson	Rick.Johnson@lawmoss.com	Moss & Barnett	150 S. 5th Street Suite 1200 Minneapolis, MN 55402	Electronic Service	No	OFF_SL_22-532_Official CC Service List
Jody	Johnson	jody.johnson@piic.org	Prairie Island Indian Community	5636 Sturgeon Lake Rd Welch, MN 55089	Electronic Service	No	OFF_SL_22-532_Official CC Service List

First Name	Last Name	Email	Company Name	Address	Delivery Method	View Trade Secret	Service List Name
Johnny	Johnson	Johnny.Johnson@piic.org	Prairie Island Indian Community	5636 Sturgeon Lake Road Welch, MN 55089	Electronic Service	No	OFF_SL_22-532_Official CC Service List
Scott	Johnson	Scott.Johnson@ci.medina.mn.us	City of Medina	2052 County Road 24 Medina, MN 55340-9790	Electronic Service	No	OFF_SL_22-532_Official CC Service List
Sarah	Johnson Phillips	sarah.phillips@stoel.com	Stoel Rives LLP	33 South Sixth Street Suite 4200 Minneapolis, MN 55402	Electronic Service	No	OFF_SL_22-532_Official CC Service List
Nick	Kaneski	nick.kaneski@enbridge.com	Enbridge Energy Company, Inc.	11 East Superior St Ste 125 Duluth, MN 55802	Electronic Service	No	OFF_SL_22-532_Official CC Service List
Tom	Karas	tomskaras@gmail.com		3171 309th Ave NW Cambridge, MN 55008	Electronic Service	No	OFF_SL_22-532_Official CC Service List
Bruce	King	Brenda@ranww.org	Realtors, Association of Northwestern WI	Suite 3 1903 Keith Street Eau Claire, WI 54701	Electronic Service	No	OFF_SL_22-532_Official CC Service List
Ray	Kirsch	Raymond.Kirsch@state.mn.us	Department of Commerce	85 7th Place E Ste 500 St. Paul, MN 55101	Electronic Service	No	OFF_SL_22-532_Official CC Service List
Chad	Konickson	chad.konickson@usace.army.mil	U.S. Army Corps of Engineers	180 5th St # 700 Saint Paul, MN 55101	Electronic Service	No	OFF_SL_22-532_Official CC Service List
Stacy	Kotch Egstad	Stacy.Kotch@state.mn.us	MINNESOTA DEPARTMENT OF TRANSPORTATION	395 John Ireland Blvd. St. Paul, MN 55155	Electronic Service	No	OFF_SL_22-532_Official CC Service List
Mark	Kotschevar	mkotschevar@rpu.org	Rochester Public Utilities	4000 East River Road NE Rochester, MN 55906	Electronic Service	No	OFF_SL_22-532_Official CC Service List

First Name	Last Name	Email	Company Name	Address	Delivery Method	View Trade Secret	Service List Name
Michael	Krikava	mkrikava@taftlaw.com	Taft Stettinius & Hollister LLP	2200 IDS Center 80 S 8th St Minneapolis, MN 55402	Electronic Service	No	OFF_SL_22-532_Official CC Service List
Nicolle	Kupser	nkupser@greatermngas.com	Greater Minnesota Gas, Inc. & Greater MN Transmission, LLC	1900 Cardinal Ln PO Box 798 Faribault, MN 55021	Electronic Service	No	OFF_SL_22-532_Official CC Service List
Mike	Laroque	mike.laroque@whiteearthnsn.gov	White Earth Nation	PO Box 418 White Earth, MN 56591	Electronic Service	No	OFF_SL_22-532_Official CC Service List
Robert L	Larsen	robert.larsen@lowersioux.com	Lower Sioux Indian Community	PO Box 308 39527 Reservation Highway 1 Morton, MN 56270	Electronic Service	No	OFF_SL_22-532_Official CC Service List
James D.	Larson	james.larson@avantenergy.com	Avant Energy Services	220 S 6th St Ste 1300 Minneapolis, MN 55402	Electronic Service	No	OFF_SL_22-532_Official CC Service List
Peder	Larson	plarson@larkinhoffman.com	Larkin Hoffman Daly & Lindgren, Ltd.	8300 Norman Center Drive Suite 1000 Bloomington, MN 55437	Electronic Service	No	OFF_SL_22-532_Official CC Service List
Jason	Loos	jason.loos@centerpointenergy.com	CenterPoint Energy Resources Corp.	505 Nicollet Mall 3rd Floor Minneapolis, MN 55402	Electronic Service	No	OFF_SL_22-532_Official CC Service List
Susan	Ludwig	sludwig@mnpower.com	Minnesota Power	30 West Superior Street Duluth, MN 55802	Electronic Service	No	OFF_SL_22-532_Official CC Service List
Vernelle	Lussier	vernelle.lussier@redlakensation.org	Red Lake Nation	15484 Migizi Drive Red Lake, MN 56671	Electronic Service	No	OFF_SL_22-532_Official CC Service List

First Name	Last Name	Email	Company Name	Address	Delivery Method	View Trade Secret	Service List Name
Jamie	MacAlister	jamie.macalister@state.mn.us	Department of Commerce	85 7th Place East, Ste. 500 St. Paul, MN 55101	Electronic Service	No	OFF_SL_22-532_Official CC Service List
Kavita	Maini	kmains@wi.rr.com	KM Energy Consulting, LLC	961 N Lost Woods Rd Oconomowoc, WI 53066	Electronic Service	No	OFF_SL_22-532_Official CC Service List
Dawn S	Marsh	dawn_marsh@fws.gov	U.S. Fish & Wildlife Service	Minnesota-Wisconsin Field Offices 4101 American Blvd E Bloomington, MN 55425	Electronic Service	No	OFF_SL_22-532_Official CC Service List
Shena	Matrious	Shena.Matrious@millelacs band.com	Mille Lacs Band of Ojibwe	43408 Oodena Drive Onamia, MN 56349	Electronic Service	No	OFF_SL_22-532_Official CC Service List
April	McCormick	aprilm@grandportage.com	Grand Portage Band of Lake Superior Chippewa	PO Box 428 Grand Portage, MN 55605	Electronic Service	No	OFF_SL_22-532_Official CC Service List
Valentina	Mgeni	Valentina.Mgeni@piic.org	Prairie Island Indian Community	Prairie Island Indian Community 5636 Sturgeon Lake Road Welch, MN 55089	Electronic Service	No	OFF_SL_22-532_Official CC Service List
Stacy	Miller	stacy.miller@minneapolis m.n.gov	City of Minneapolis	350 S. 5th Street Room M 301 Minneapolis, MN 55415	Electronic Service	No	OFF_SL_22-532_Official CC Service List
Cole W.	Miller	cole.miller@shakopeedakot a.org	Shakopee Mdewakanton Sioux Community	Shakopee Mdewakanton Sioux Community 2330 Sioux Trail NW Prior Lake, MN 55372	Electronic Service	No	OFF_SL_22-532_Official CC Service List
Mark S	Mitchell	ms.mitchell@smmpa.org	SMMPA	500 2st Ave SW Rochester, MN 55902-3303	Electronic Service	No	OFF_SL_22-532_Official CC Service List

First Name	Last Name	Email	Company Name	Address	Delivery Method	View Trade Secret	Service List Name
David	Moeller	dmoeller@allete.com	Minnesota Power	30 W Superior St Duluth, MN 558022093	Electronic Service	No	OFF_SL_22-532_Official CC Service List
Andrew	Moratzka	andrew.moratzka@stoel.com	Stoel Rives LLP	33 South Sixth St Ste 4200 Minneapolis, MN 55402	Electronic Service	No	OFF_SL_22-532_Official CC Service List
Travis	Morrison	travis.morrison@boisforten-sn.gov	Bois Forte Band of Chippewa	Bois Forte Tribal Government 5344 Lakeshore Drive Nett Lake, MN 55772	Electronic Service	No	OFF_SL_22-532_Official CC Service List
Robert	Moyer, Jr.	rmoyer@boisforte-nsn.gov	Bois Forte Band of Chippewa Tribal Government	5344 Lakeshore Drive Nett Lake, MN 55772	Electronic Service	No	OFF_SL_22-532_Official CC Service List
Sonny	Myers	smyers@1854treatyauthority.org	1854 Treaty Authority	4428 Haines Rd Duluth, MN 55811-1524	Electronic Service	No	OFF_SL_22-532_Official CC Service List
Dan	Nelson	Dan.Nelson@ISGinc.com	I&S Group	115 E Hickory St Ste 300 Mankato, MN 56001	Electronic Service	No	OFF_SL_22-532_Official CC Service List
David	Niles	david.niles@avantenergy.com	Minnesota Municipal Power Agency	220 South Sixth Street Suite 1300 Minneapolis, MN 55402	Electronic Service	No	OFF_SL_22-532_Official CC Service List
Samantha	Norris	samanthanorris@alliantenergy.com	Interstate Power and Light Company	200 1st Street SE PO Box 351 Cedar Rapids, IA 524060351	Electronic Service	No	OFF_SL_22-532_Official CC Service List
Ann	O'Reilly	ann.oreilly@state.mn.us	Office of Administrative Hearings	PO Box 64620 St. Paul, MN 55101	Electronic Service	No	OFF_SL_22-532_Official CC Service List

First Name	Last Name	Email	Company Name	Address	Delivery Method	View Trade Secret	Service List Name
Joseph	OBrien	joey.obrien@lowersioux.com	Lower Sioux Indian Community	39527 Highway 1 Morton, MN 56270	Electronic Service	No	OFF_SL_22-532_Official CC Service List
Samantha J	Odegard	samanthao@uppersiouxcommunity-nsn.gov	Upper Sioux Tribal Community	PO Box 147 Granite Falls, MN 56241	Electronic Service	No	OFF_SL_22-532_Official CC Service List
Matthew	Olsen	molsen@otpc.com	Otter Tail Power Company	215 South Cascade Street Fergus Falls, MN 56537	Electronic Service	No	OFF_SL_22-532_Official CC Service List
Carol A.	Overland	overland@legalectric.org	Legalelectric - Overland Law Office	1110 West Avenue Red Wing, MN 55066	Electronic Service	No	OFF_SL_22-532_Official CC Service List
Greg	Palmer	gpalmer@greatermngas.com	Greater Minnesota Gas, Inc. & Greater MN Transmission, LLC	1900 Cardinal Ln PO Box 798 Faribault, MN 55021	Electronic Service	No	OFF_SL_22-532_Official CC Service List
Cezar	Panait	Cezar.Panait@state.mn.us	Public Utilities Commission	121 7th Place East Suite 350 St. Paul, MN 55101	Electronic Service	No	OFF_SL_22-532_Official CC Service List
Earl	Pendleton	earl.pendleton@lowersioux.com	Lower Sioux Indian Community	39527 Highway 1 Morton, MN 56270	Electronic Service	No	OFF_SL_22-532_Official CC Service List
Kevin	Peterson	kjp@ibew160.org	IBEW Local 160	1109 Northway Lane NE Rochester, MN 55906	Electronic Service	No	OFF_SL_22-532_Official CC Service List
Jennifer	Peterson	jjpeterson@mnpower.com	Minnesota Power	30 West Superior Street Duluth, MN 55802	Electronic Service	No	OFF_SL_22-532_Official CC Service List
Catherine	Phillips	Catherine.Phillips@wecenergygroup.com	Minnesota Energy Resources	231 West Michigan St Milwaukee, WI 53203	Electronic Service	No	OFF_SL_22-532_Official CC Service List

First Name	Last Name	Email	Company Name	Address	Delivery Method	View Trade Secret	Service List Name
Angela	Piner	angela.piner@hdrinc.com	HDR, Inc.	Suite 600 701 Xenia Avenue South Suite 600 Minneapolis, MN 55416	Electronic Service	No	OFF_SL_22-532_Official CC Service List
Joe	Plumer	joe.plumer@redlakenation.org	Red Lake Nation	15484 Migizi Drive Red Lake, MN 56671	Electronic Service	No	OFF_SL_22-532_Official CC Service List
Benjamin L.	Porath	ben.porath@dairylandpower.com	Dairyland Power Cooperative	3200 East Ave S PO Box 817 La Crosse, WI 546020817	Electronic Service	No	OFF_SL_22-532_Official CC Service List
Robert	Prescott	bob.prescott@lowersioux.com	Lower Sioux Indian Community	39527 Highway 1 Morton, MN 56270	Electronic Service	No	OFF_SL_22-532_Official CC Service List
Larry	Rebman	larryemls@hotmail.com	EMLS, Inc	PO Box 122 Appleton, MN 56208	Electronic Service	No	OFF_SL_22-532_Official CC Service List
Generic Notice	Residential Utilities Division	residential.utilities@ag.state.mn.us	Office of the Attorney General-RUD	1400 BRM Tower 445 Minnesota St St. Paul, MN 551012131	Electronic Service	Yes	OFF_SL_22-532_Official CC Service List
Kevin	Reuther	kreuther@mncenter.org	MN Center for Environmental Advocacy	26 E Exchange St, Ste 206 St. Paul, MN 551011667	Electronic Service	No	OFF_SL_22-532_Official CC Service List
Margaret	Rheude	Margaret_Rheude@fws.gov	U.S. Fish and Wildlife Service	Twin Cities Ecological Services Field Office 4101 American Blvd. E. Bloomington, MN 55425	Electronic Service	No	OFF_SL_22-532_Official CC Service List
Susan	Romans	sromans@allete.com	Minnesota Power	30 West Superior Street Legal Dept Duluth, MN 55802	Electronic Service	No	OFF_SL_22-532_Official CC Service List

First Name	Last Name	Email	Company Name	Address	Delivery Method	View Trade Secret	Service List Name
Stephan	Roos	stephan.roos@state.mn.us	MN Department of Agriculture	625 Robert St N Saint Paul, MN 55155-2538	Electronic Service	No	OFF_SL_22-532_Official CC Service List
Bill	Rudnicki	bill.rudnicki@shakopeedakota.org	Shakopee Mdewakanton Sioux Community	Shakopee Mdewakanton Sioux Community 2330 Sioux Trail NW Prior Lake, MN 55372	Electronic Service	No	OFF_SL_22-532_Official CC Service List
Nathaniel	Runke	nrunke@local49.org	International Union of Operating Engineers Local 49	611 28th St. NW Rochester, MN 55901	Electronic Service	No	OFF_SL_22-532_Official CC Service List
Miranda	Sam	Miranda.Sam@lowersioux.com	Lower Sioux Indian Community	39527 Reservation Highway 1 PO Box 308 Morton, MN 56270	Electronic Service	No	OFF_SL_22-532_Official CC Service List
Adam	Savariago	adams@uppersiouxcommunity-nsn.gov	Upper Sioux Community	5722 Travers Lane PO Box 147 Granite Falls, MN 56241	Electronic Service	No	OFF_SL_22-532_Official CC Service List
Elizabeth	Schmiesing	eschmiesing@winthrop.com	Winthrop & Weinstine, P.A.	225 South Sixth Street Suite 3500 Minneapolis, MN 55402	Electronic Service	No	OFF_SL_22-532_Official CC Service List
Peter	Scholtz	peter.scholtz@ag.state.mn.us	Office of the Attorney General-RUD	Suite 1400 445 Minnesota Street St. Paul, MN 55101-2131	Electronic Service	No	OFF_SL_22-532_Official CC Service List
Christine	Schwartz	Regulatory.records@xcelenergy.com	Xcel Energy	414 Nicollet Mall FL 7 Minneapolis, MN 554011993	Electronic Service	Yes	OFF_SL_22-532_Official CC Service List
Jessie	Seim	jessie.seim@piic.org	Prairie Island Indian Community	5636 Sturgeon Lake Rd Welch, MN 55089	Electronic Service	No	OFF_SL_22-532_Official CC Service List

First Name	Last Name	Email	Company Name	Address	Delivery Method	View Trade Secret	Service List Name
Darrell	Seki, Sr.	dseki@redlakenation.org	Red Lake Nation	15484 Migizi Drive Red Lake, MN 56671	Electronic Service	No	OFF_SL_22-532_Official CC Service List
Will	Seuffert	Will.Seuffert@state.mn.us	Public Utilities Commission	121 7th PI E Ste 350 Saint Paul, MN 55101	Electronic Service	Yes	OFF_SL_22-532_Official CC Service List
Janet	Shaddix Elling	jshaddix@janetshaddix.com	Shaddix And Associates	7400 Lyndale Ave S Ste 190 Richfield, MN 55423	Electronic Service	Yes	OFF_SL_22-532_Official CC Service List
Colleen	Sipiorski	Colleen.Sipiorski@wecenergygroup.com	Minnesota Energy Resources Corporation	700 North Adams St Green Bay, WI 54307	Electronic Service	No	OFF_SL_22-532_Official CC Service List
Tom	Slukich	tom@nationalconductor.com	National Conductor Constructors	18119 Hwy 371 North Braiderd, MN 56401	Electronic Service	No	OFF_SL_22-532_Official CC Service List
Ken	Smith	ken.smith@districtenergy.com	District Energy St. Paul Inc.	76 W Kellogg Blvd St. Paul, MN 55102	Electronic Service	No	OFF_SL_22-532_Official CC Service List
Nizhoni	Smith	nizhoni.smith@lowersioux.com	Lower Sioux Indian Community	PO Box 308 39527 Reservation Highway 1 Morton, MN 56270	Electronic Service	No	OFF_SL_22-532_Official CC Service List
Joel	Smith	jsmith@mnchippewatribe.org	Minnesota Chippewa Tribe	PO Box 217 Cass Lake, MN 56633	Electronic Service	No	OFF_SL_22-532_Official CC Service List
Roger	Smith, Sr.	RogerMSmithSr@fdlrez.com	Fond du Lac Band of Lake Superior Chippewa	1720 Big Lake Road Cloquet, MN 55720	Electronic Service	No	OFF_SL_22-532_Official CC Service List

First Name	Last Name	Email	Company Name	Address	Delivery Method	View Trade Secret	Service List Name
Adam	Sokolski	adam.sokolski@edf-re.com	EDF Renewable Energy	10 Second Street NE Ste 400 Minneapolis, MN 55410	Electronic Service	No	OFF_SL_22-532_Official CC Service List
Eugene	Sommers	eugene.sommers@whiteearth-nsn.gov	White Earth Nation	PO BOX 418 White Earth, MN 56591	Electronic Service	No	OFF_SL_22-532_Official CC Service List
Peggy	Sorum	peggy.sorum@centerpointenergy.com	CenterPoint Energy	505 Nicollet Mall Minneapolis, MN 55402	Electronic Service	No	OFF_SL_22-532_Official CC Service List
Marie	Spry	mariespry@grandportage.com	Grand Portage Band of Lake Superior Chippewa	PO Box 428 Grand Portage, MN 55605	Electronic Service	No	OFF_SL_22-532_Official CC Service List
Cheyenne	St. John	cheyenne.stjohn@lowersioux.com	Lower Sioux Tribal Community	39527 Reservation Hwy 1 Morton, MN 56270	Electronic Service	No	OFF_SL_22-532_Official CC Service List
LeRoy	Staples Fairbanks III	leroy.fairbanks@llojibwe.net	Leech Lake Band of Ojibwe	190 Sailstar Drive NW Cass Lake, MN 56633	Electronic Service	No	OFF_SL_22-532_Official CC Service List
Byron E.	Starns	byron.starns@stinson.com	STINSON LLP	50 S 6th St Ste 2600 Minneapolis, MN 55402	Electronic Service	No	OFF_SL_22-532_Official CC Service List
Kristin	Stastny	kstastny@taftlaw.com	Taft Stettinius & Hollister LLP	2200 IDS Center 80 South 8th St Minneapolis, MN 55402	Electronic Service	No	OFF_SL_22-532_Official CC Service List
Lauren	Steinheuser	lauren.steinheuser@xcelenergy.com	Northern States Power Company dba Xcel Energy	414 Nicollet Mall, 401-08 Minneapolis, MN 55401	Electronic Service	No	OFF_SL_22-532_Official CC Service List
Toby	Stephens	tobys@grandportage.com	Grand Portage Band of Lake Superior Chippewa	PO BOX 428 Grand Portage, MN 55605	Electronic Service	No	OFF_SL_22-532_Official CC Service List

First Name	Last Name	Email	Company Name	Address	Delivery Method	View Trade Secret	Service List Name
Cary	Stephenson	cStephenson@otpco.com	Otter Tail Power Company	215 South Cascade Street Fergus Falls, MN 56537	Electronic Service	No	OFF_SL_22-532_Official CC Service List
Mark	Strohfus	mstrohfus@grenergy.com	Great River Energy	12300 Elm Creek Boulevard Maple Grove, MN 553694718	Electronic Service	No	OFF_SL_22-532_Official CC Service List
Carl	Strohm	cjsmg@sbcglobal.net	SBC Global	105 East Edgewood Ave Indianapolis, IN 46227	Electronic Service	No	OFF_SL_22-532_Official CC Service List
James M	Strommen	jstrommen@kennedy-graven.com	Kennedy & Graven, Chartered	150 S 5th St Ste 700 Minneapolis, MN 55402	Electronic Service	No	OFF_SL_22-532_Official CC Service List
Samuel	Strong	Sam.strong@redlakenation.org	Red Lake Nation	15484 Migizi Drive Red Lake, MN 56671	Electronic Service	No	OFF_SL_22-532_Official CC Service List
Emily	Suppes	emily.suppes@centerpointenergy.com	CenterPoint Energy Minnesota Gas	505 Nicollet Mall Minneapolis, MN 55402	Electronic Service	No	OFF_SL_22-532_Official CC Service List
Tom	Swafford	tswafford@umsi.us	Utility Mapping Services, Inc	3947 E Calvary Rd Suite 103 Duluth, MN 55803	Electronic Service	No	OFF_SL_22-532_Official CC Service List
Eric	Swanson	eswanson@winthrop.com	Winthrop & Weinstine	225 S 6th St Ste 3500 Capella Tower Minneapolis, MN 554024629	Electronic Service	No	OFF_SL_22-532_Official CC Service List
Todd	Tadych	ttadych@atcllc.com	American Transmission Company LLC	5303 Fen Oak Dr Madison, WI 53718	Electronic Service	No	OFF_SL_22-532_Official CC Service List
Camille	Tanhoff	kamip@uppersiouxcommunity-nsn.gov	Upper Sioux Community	5722 Travers Lane PO BOX 147 Granite Falls, MN 56241	Electronic Service	No	OFF_SL_22-532_Official CC Service List

First Name	Last Name	Email	Company Name	Address	Delivery Method	View Trade Secret	Service List Name
Stuart	Tommerdahl	stommerdahl@otpco.com	Otter Tail Power Company	215 S Cascade St PO Box 496 Fergus Falls, MN 56537	Electronic Service	No	OFF_SL_22-532_Official CC Service List
Jayne	Trusty	execdir@swrdc.org	SWRDC	2401 Broadway Ave #1 Slayton, MN 56172	Electronic Service	No	OFF_SL_22-532_Official CC Service List
Caralyn	Trutna	carrie@upperSiouxcommunity-nsn.gov	Upper Sioux Community	Upper Sioux Community P.O. Box 147 Granite Falls, MN 55372	Electronic Service	No	OFF_SL_22-532_Official CC Service List
Jen	Tyler	tyler.jennifer@epa.gov	US Environmental Protection Agency	Environmental Planning & Evaluation Unit 77 W Jackson Blvd. Mailstop B-19J Chicago, IL 60604-3590	Electronic Service	No	OFF_SL_22-532_Official CC Service List
Amelia	Vohs	avohs@mncenter.org	Minnesota Center for Environmental Advocacy	1919 University Avenue West Suite 515 St. Paul, MN 55104	Electronic Service	No	OFF_SL_22-532_Official CC Service List
Leonard	Wabasha	leonard.wabasha@shakopeedakota.org	Shakopee Mdewakanton Sioux Community	2300 Tiwahe Circle Shakopee, MN 55379	Electronic Service	No	OFF_SL_22-532_Official CC Service List
Caren	Warner	caren.warner@state.mn.us	Department of Commerce	85 7th Place East Suite 280 St. Paul, MN 55101-2198	Electronic Service	No	OFF_SL_22-532_Official CC Service List
Luke	Warnsholz	lwarnsholz@boisforten-sn.gov	Bois Forte Band of Chippewa	Bois Forte Tribal Government 5344 Lakeshore Drive Nett Lake, MN 55772	Electronic Service	No	OFF_SL_22-532_Official CC Service List
Cynthia	Warzecha	cynthia.warzecha@state.mn.us	Minnesota Department of Natural Resources	500 Lafayette Road Box 25 St. Paul, MN 55155-4040	Electronic Service	No	OFF_SL_22-532_Official CC Service List

First Name	Last Name	Email	Company Name	Address	Delivery Method	View Trade Secret	Service List Name
Elizabeth	Wefel	eawefel@flaherty-hood.com	Flaherty & Hood, P.A.	525 Park St Ste 470 Saint Paul, MN 55103	Electronic Service	No	OFF_SL_22-532_Official CC Service List
Heather	Westra	heather.westra@piic.org	Prairie Island Indian Community	5636 Sturgeon Lake Rd Welch, MN 55089	Electronic Service	No	OFF_SL_22-532_Official CC Service List
Alan	Whipple	sa.property@state.mn.us	Minnesota Department Of Revenue	Property Tax Division 600 N. Robert Street St. Paul, MN 551463340	Electronic Service	No	OFF_SL_22-532_Official CC Service List
Deanna	White	mncwa@cleanwater.org	Clean Water Action & Water Fund of MN	330 S 2nd Ave Ste 420 Minneapolis, MN 55401	Electronic Service	No	OFF_SL_22-532_Official CC Service List
Steve	White	steve.white@llojibwe.net	Leech Lake Band of Ojibwe	190 Sailstar Drive NW Cass Lake, MN 56633	Electronic Service	No	OFF_SL_22-532_Official CC Service List
Noah	White	noah.white@piic.org	Prairie Island Indian Community	5636 Sturgeon Lake Road Welch, MN 55089	Electronic Service	No	OFF_SL_22-532_Official CC Service List
Cody	Whitebear	cody.whitebear@piic.org	Prairie Island Indian Community	5636 Sturgeon Lake Road Welch, MN 55089	Electronic Service	No	OFF_SL_22-532_Official CC Service List
Mike	Wilson	Mike.Wilson@millelacsband.com	Mille Lacs Band of Ojibwe	43408 Oodena Dr Onamia, MN 56359	Electronic Service	No	OFF_SL_22-532_Official CC Service List
Virgil	Wind	virgil.wind@millelacsband.com	Mille Lacs Band of Ojibwe	43408 Oodena Drive Onamia, MN 56359	Electronic Service	No	OFF_SL_22-532_Official CC Service List
Joseph	Windler	jwindler@winthrop.com	Winthrop & Weinstine	225 South Sixth Street, Suite 3500 Minneapolis, MN 55402	Electronic Service	No	OFF_SL_22-532_Official CC Service List

First Name	Last Name	Email	Company Name	Address	Delivery Method	View Trade Secret	Service List Name
Jonathan	Wolfgram	Jonathan.Wolfgram@state.mn.us	Office of Pipeline Safety	445 Minnesota St Ste 147 Woodbury, MN 55125	Electronic Service	No	OFF_SL_22-532_Official CC Service List
Laurie	York	laurie.york@whiteearth-nsn.gov	White Earth Reservation Business Committee	PO Box 418 White Earth, MN 56591	Electronic Service	No	OFF_SL_22-532_Official CC Service List
Ian	Young	ianyong@fdlband.org	Fond du Lac Band of Lake Superior Chippewa	1720 Big Lake Road Cloquet, MN 55720	Electronic Service	No	OFF_SL_22-532_Official CC Service List
Kurt	Zimmerman	kwz@ibew160.org	Local Union #160, IBEW	2909 Anthony Ln St Anthony Village, MN 55418-3238	Electronic Service	No	OFF_SL_22-532_Official CC Service List
Patrick	Zomer	Pat.Zomer@lawmoss.com	Moss & Barnett PA	150 S 5th St #1200 Minneapolis, MN 55402	Electronic Service	No	OFF_SL_22-532_Official CC Service List

First Name	Last Name	Email	Company Name	Address	Delivery Method	View Trade Secret	Service List Name
Katherine	Arnold	katherine.arnold@ag.state.mn.us	Office of the Attorney General-DOC	445 Minnesota Street Suite 1400 St. Paul, MN 55101	Electronic Service	No	OFF_SL_23-157_Official CC Service List
Michael W.	Chase	mwchase_kenyon@yahoo.com	Citizens for Environmental Rights and Safety	6201 480th St. Kenyon, MN 55946	Electronic Service	No	OFF_SL_23-157_Official CC Service List
Generic Notice	Commerce Attorneys	commerce.attorneys@ag.state.mn.us	Office of the Attorney General-DOC	445 Minnesota Street Suite 1400 St. Paul, MN 55101	Electronic Service	Yes	OFF_SL_23-157_Official CC Service List
Brent	Dauk	brentdauk@aol.com		140 438th Ave Moose Lake, MN 56063	Electronic Service	No	OFF_SL_23-157_Official CC Service List
Richard	Davis	Richard.Davis@state.mn.us	Department of Commerce	85 7th Place East Suite 500 Saint Paul, MN 55101	Electronic Service	No	OFF_SL_23-157_Official CC Service List
Seth	DeMerritt	Seth.DeMerritt@centerpointenergy.com	CenterPoint Energy Minnesota Gas	505 Nicollet Mall Minneapolis, MN 55402	Electronic Service	No	OFF_SL_23-157_Official CC Service List
Bret	Eknes	bret.eknes@state.mn.us	Public Utilities Commission	Suite 350 121 7th Place East St. Paul, MN 551012147	Electronic Service	No	OFF_SL_23-157_Official CC Service List
Sharon	Ferguson	sharon.ferguson@state.mn.us	Department of Commerce	85 7th Place E Ste 280 Saint Paul, MN 551012198	Electronic Service	No	OFF_SL_23-157_Official CC Service List
Ellen	Heine	ellen.l.heine@xcelenergy.com	Xcel Energy	414 Nicollet Mall, MP-8 Minneapolis, MN 55401	Electronic Service	No	OFF_SL_23-157_Official CC Service List
Abigail	Hencheck	ahencheck@mncenter.org	Minnesota Center for Environmental Advocacy	1919 University Ave W Suite 515 St. Paul, MN 55104	Electronic Service	No	OFF_SL_23-157_Official CC Service List

First Name	Last Name	Email	Company Name	Address	Delivery Method	View Trade Secret	Service List Name
Valerie	Herring	vherring@taftlaw.com	Taft Stettinius & Hollister LLP	2200 IDS Center 80 S. Eighth Street Minneapolis, MN 55402	Electronic Service	No	OFF_SL_23-157_Official CC Service List
Jason	Loos	jason.loos@centerpointenergy.com	CenterPoint Energy Resources Corp.	505 Nicollet Mall 3rd Floor Minneapolis, MN 55402	Electronic Service	No	OFF_SL_23-157_Official CC Service List
Jamie	MacAlister	jamie.macalister@state.mn.us	Department of Commerce	85 7th Place East, Ste. 500 St. Paul, MN 55101	Electronic Service	No	OFF_SL_23-157_Official CC Service List
Ann	O'Reilly	ann.oreilly@state.mn.us	Office of Administrative Hearings	PO Box 64620 St. Paul, MN 55101	Electronic Service	Yes	OFF_SL_23-157_Official CC Service List
Carol A.	Overland	overland@legalectric.org	Legalelectric - Overland Law Office	1110 West Avenue Red Wing, MN 55066	Electronic Service	No	OFF_SL_23-157_Official CC Service List
Cezar	Panait	Cezar.Panait@state.mn.us	Public Utilities Commission	121 7th Place East Suite 350 St. Paul, MN 55101	Electronic Service	No	OFF_SL_23-157_Official CC Service List
Generic Notice	Residential Utilities Division	residential.utilities@ag.state.mn.us	Office of the Attorney General-RUD	1400 BRM Tower 445 Minnesota St St. Paul, MN 551012131	Electronic Service	Yes	OFF_SL_23-157_Official CC Service List
Christine	Schwartz	Regulatory.records@xcelenergy.com	Xcel Energy	414 Nicollet Mall FL 7 Minneapolis, MN 554011993	Electronic Service	No	OFF_SL_23-157_Official CC Service List
Will	Seuffert	Will.Seuffert@state.mn.us	Public Utilities Commission	121 7th PI E Ste 350 Saint Paul, MN 55101	Electronic Service	Yes	OFF_SL_23-157_Official CC Service List

First Name	Last Name	Email	Company Name	Address	Delivery Method	View Trade Secret	Service List Name
Janet	Shaddix Elling	jshaddix@janetshaddix.com	Shaddix And Associates	7400 Lyndale Ave S Ste 190 Richfield, MN 55423	Electronic Service	Yes	OFF_SL_23-157_Official CC Service List
Jeffrey	Small	jsmall@misoenergy.org		MISO P.O. Box 4202 Carmel, IN 46082-4202	Electronic Service	No	OFF_SL_23-157_Official CC Service List
Lauren	Steinhaeuser	lauren.steinhaeuser@xcelenergy.com	Northern States Power Company dba Xcel Energy	414 Nicollet Mall, 401-08 Minneapolis, MN 55401	Electronic Service	No	OFF_SL_23-157_Official CC Service List
Emily	Suppes	emily.suppes@centerpointenergy.com	CenterPoint Energy Minnesota Gas	505 Nicollet Mall Minneapolis, MN 55402	Electronic Service	No	OFF_SL_23-157_Official CC Service List
Amelia	Vohs	avohs@mncenter.org	Minnesota Center for Environmental Advocacy	1919 University Avenue West Suite 515 St. Paul, MN 55104	Electronic Service	No	OFF_SL_23-157_Official CC Service List

First Name	Last Name	Email	Company Name	Address	Delivery Method	View Trade Secret	Service List Name
David	Bell	david.bell@state.mn.us	Department of Health	POB 64975 St. Paul, MN 55164	Electronic Service	No	SPL_SL_CN - CERTIFICATE OF NEEDS
Randall	Doneen	randall.doneen@state.mn.us	Department of Natural Resources	500 Lafayette Rd, PO Box 25 Saint Paul, MN 55155	Electronic Service	No	SPL_SL_CN - CERTIFICATE OF NEEDS
Kate	Fairman	kate.fairman@state.mn.us	Department of Natural Resources	Box 32 500 Lafayette Rd St. Paul, MN 551554032	Electronic Service	No	SPL_SL_CN - CERTIFICATE OF NEEDS
Annie	Felix Gerth	annie.felix-gerth@state.mn.us		Board of Water & Soil Resources 520 Lafayette Rd Saint Paul, MN 55155	Electronic Service	No	SPL_SL_CN - CERTIFICATE OF NEEDS
Todd	Green	Todd.A.Green@state.mn.us	Minnesota Department of Labor & Industry	443 Lafayette Rd N St. Paul, MN 55155-4341	Electronic Service	No	SPL_SL_CN - CERTIFICATE OF NEEDS
Kari	Howe	kari.howe@state.mn.us	DEED	332 Minnesota St, #E200 1ST National Bank Bldg St. Paul, MN 55101	Electronic Service	No	SPL_SL_CN - CERTIFICATE OF NEEDS
Ray	Kirsch	Raymond.Kirsch@state.mn.us	Department of Commerce	85 7th Place E Ste 500 St. Paul, MN 55101	Electronic Service	No	SPL_SL_CN - CERTIFICATE OF NEEDS
Chad	Konickson	chad.konickson@usace.army.mil	U.S.Army Corps of Engineers	180 5th St # 700 Saint Paul, MN 55101	Electronic Service	No	SPL_SL_CN - CERTIFICATE OF NEEDS
Stacy	Kotch Egstad	Stacy.Kotch@state.mn.us	MINNESOTA DEPARTMENT OF TRANSPORTATION	395 John Ireland Blvd. St. Paul, MN 55155	Electronic Service	No	SPL_SL_CN - CERTIFICATE OF NEEDS
Dawn S	Marsh	dawn_marsh@fws.gov	U.S. Fish & Wildlife Service	Minnesota-Wisconsin Field Offices 4101 American Blvd E Bloomington, MN 55425	Electronic Service	No	SPL_SL_CN - CERTIFICATE OF NEEDS

First Name	Last Name	Email	Company Name	Address	Delivery Method	View Trade Secret	Service List Name
Stephan	Roos	stephan.roos@state.mn.us	MN Department of Agriculture	625 Robert St N Saint Paul, MN 55155-2538	Electronic Service	No	SPL_SL_CN - CERTIFICATE OF NEEDS
Jayme	Trusty	execdir@swrdc.org	SWRDC	2401 Broadway Ave #1 Slayton, MN 56172	Electronic Service	No	SPL_SL_CN - CERTIFICATE OF NEEDS
Jen	Tyler	tyler.jennifer@epa.gov	US Environmental Protection Agency	Environmental Planning & Evaluation Unit 77 W Jackson Blvd. Mailstop B-19J Chicago, IL 60604-3590	Electronic Service	No	SPL_SL_CN - CERTIFICATE OF NEEDS
Cynthia	Warzecha	cynthia.warzecha@state.mn.us	Minnesota Department of Natural Resources	500 Lafayette Road Box 25 St. Paul, MN 55155-4040	Electronic Service	No	SPL_SL_CN - CERTIFICATE OF NEEDS
Alan	Whipple	sa.property@state.mn.us	Minnesota Department Of Revenue	Property Tax Division 600 N. Robert Street St. Paul, MN 551463340	Electronic Service	No	SPL_SL_CN - CERTIFICATE OF NEEDS
Jonathan	Wolfgram	Jonathan.Wolfgram@state.mn.us	Office of Pipeline Safety	445 Minnesota St Ste 147 Woodbury, MN 55125	Electronic Service	No	SPL_SL_CN - CERTIFICATE OF NEEDS