

Proposed Pipeline - Sandpiper	Milepost - Sandpiper	Tract Boundary
Existing Enbridge Pipelines	Potential Block Valve	Facility Boundary
Foreign Pipes	Environmental Survey Area (ESA)	Previously Sited Facility Boundary
Transmission Lines		Section Lines
SPREAD BREAK		

500 250 0 500 1,000
 Feet

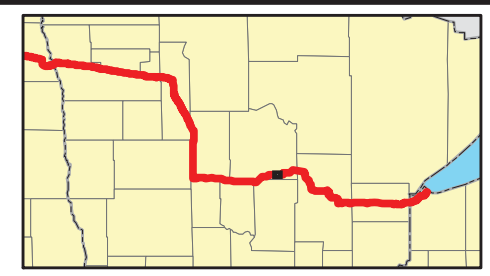
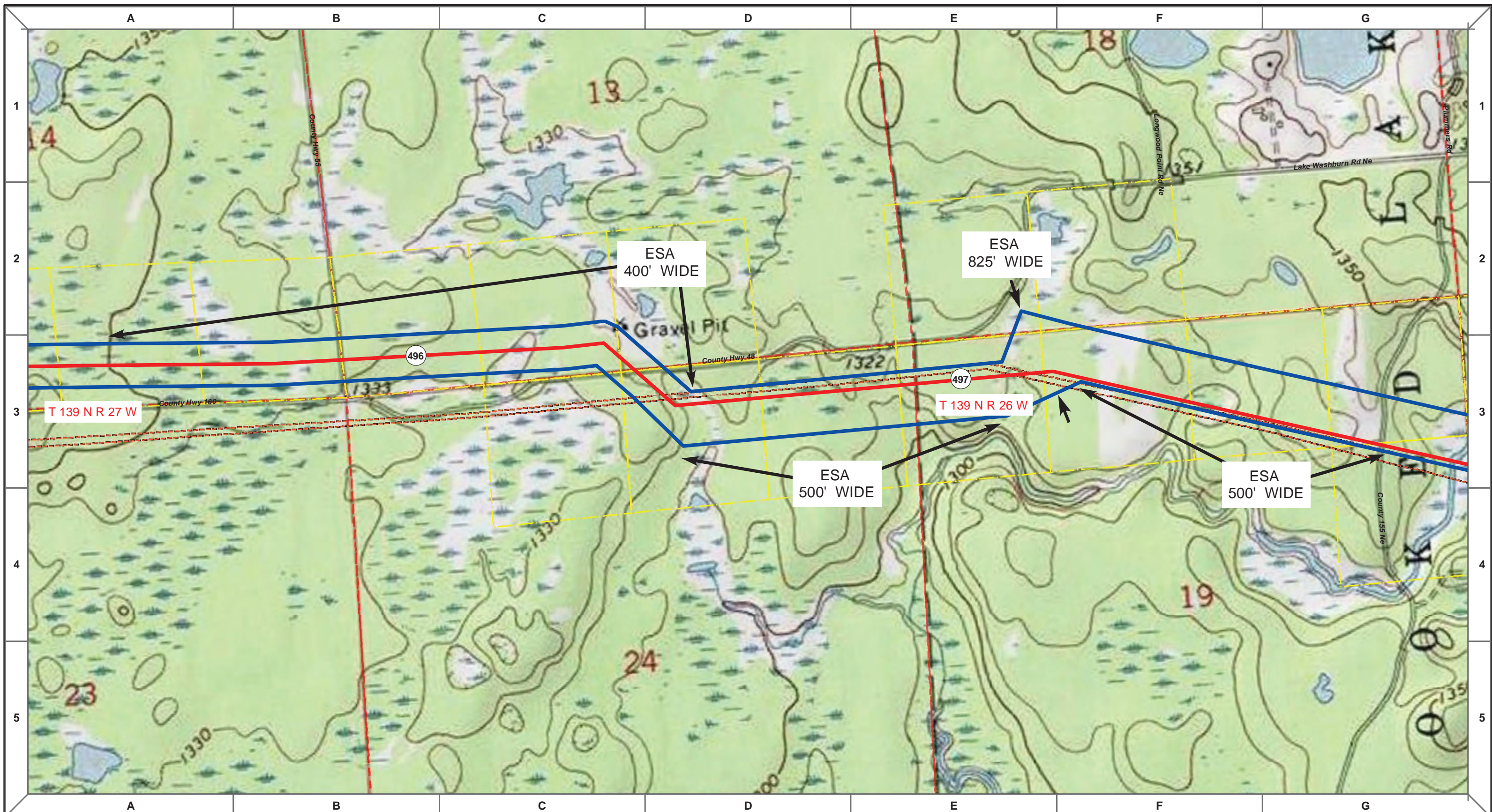
MLB	DATE	REV NO.	DESCRIPTION
	10/10/13	0	PUC Submittal

ENBRIDGE PIPELINES (NORTH DAKOTA) LLC

**PROPOSED SANDPIPER PIPELINE PROJECT
ROUTE MAP
Cass County, MN**

<small>DRAWN:</small> MLB	<small>CHECKED:</small> --
<small>DATE:</small> Oct 18, 2013	<small>SCALE:</small> AS SHOWN

Spread:7
Map: 83 of 128



Proposed Pipeline - Sandpiper	Milepost - Sandpiper	Tract Boundary
Existing Enbridge Pipelines	Potential Block Valve	Facility Boundary
Foreign Pipes	Environmental Survey Area (ESA)	Previously Sited Facility Boundary
Transmission Lines		Section Lines
SPREAD BREAK		

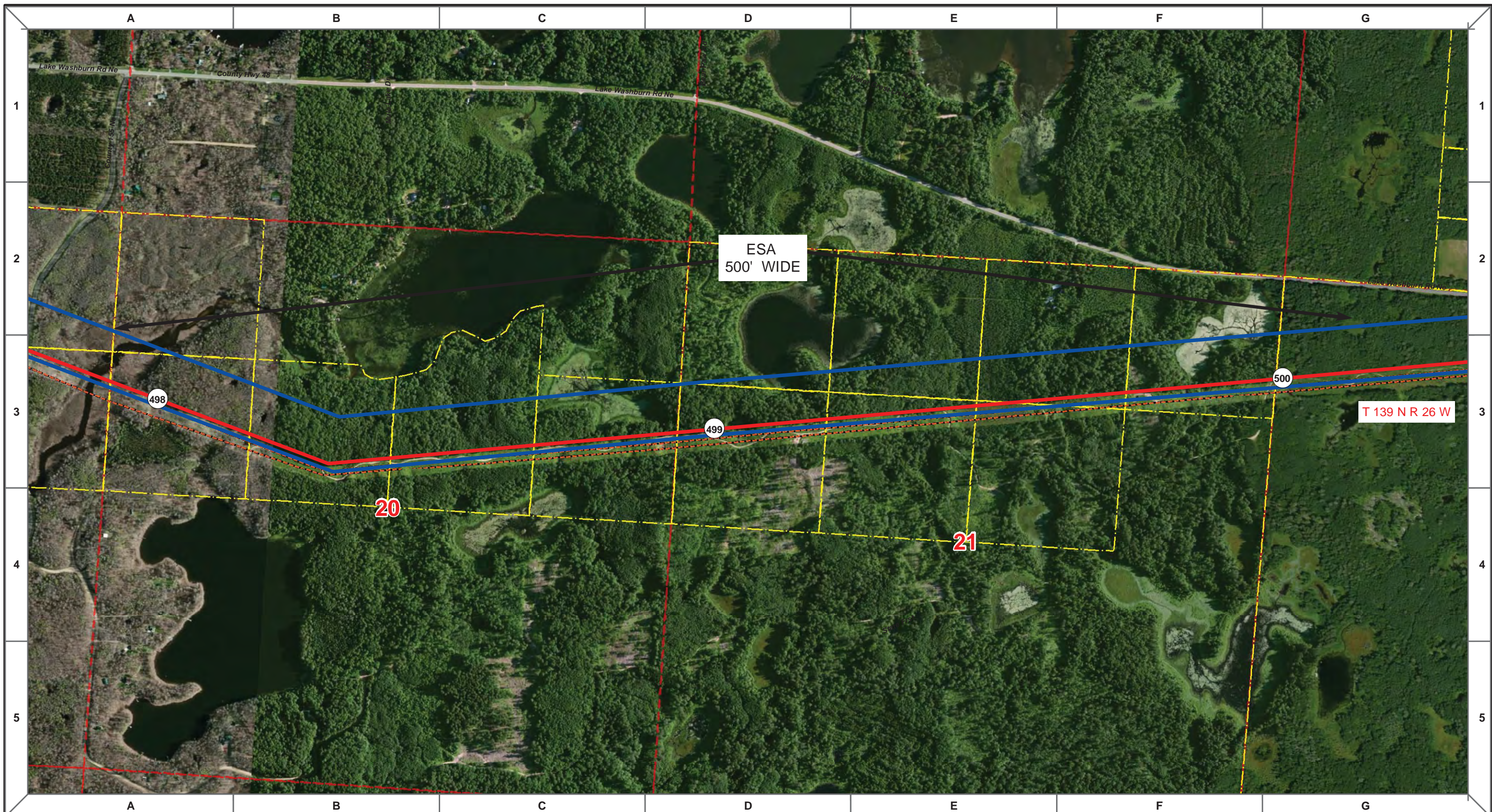
MLB	10/10/13	0	PUC Submittal
DRAWN	CHECKED	APPROVED	DATE
REV NO.	DESCRIPTION		

ENBRIDGE PIPELINES (NORTH DAKOTA) LLC

**PROPOSED SANDPIPER PIPELINE PROJECT
ROUTE MAP
Cass County, MN**

DRAWN: MLB	CHECKED: --
DATE: Oct 18, 2013	SCALE: AS SHOWN

Spread:7 Map: 83 of 128



ESA
500' WIDE

T 139 N R 26 W

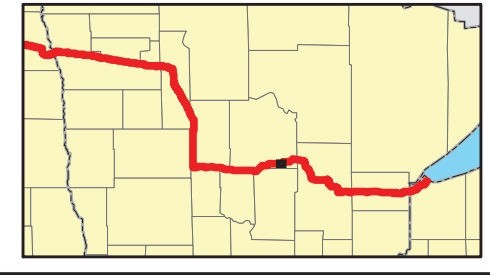
498

499

500

20

21



Proposed Pipeline - Sandpiper	Milepost - Sandpiper	Tract Boundary
Existing Enbridge Pipelines	Potential Block Valve	Facility Boundary
Foreign Pipes	Environmental Survey Area (ESA)	Previously Sited Facility Boundary
Transmission Lines		Section Lines
SPREAD BREAK		

500 250 0 500 1,000 Feet

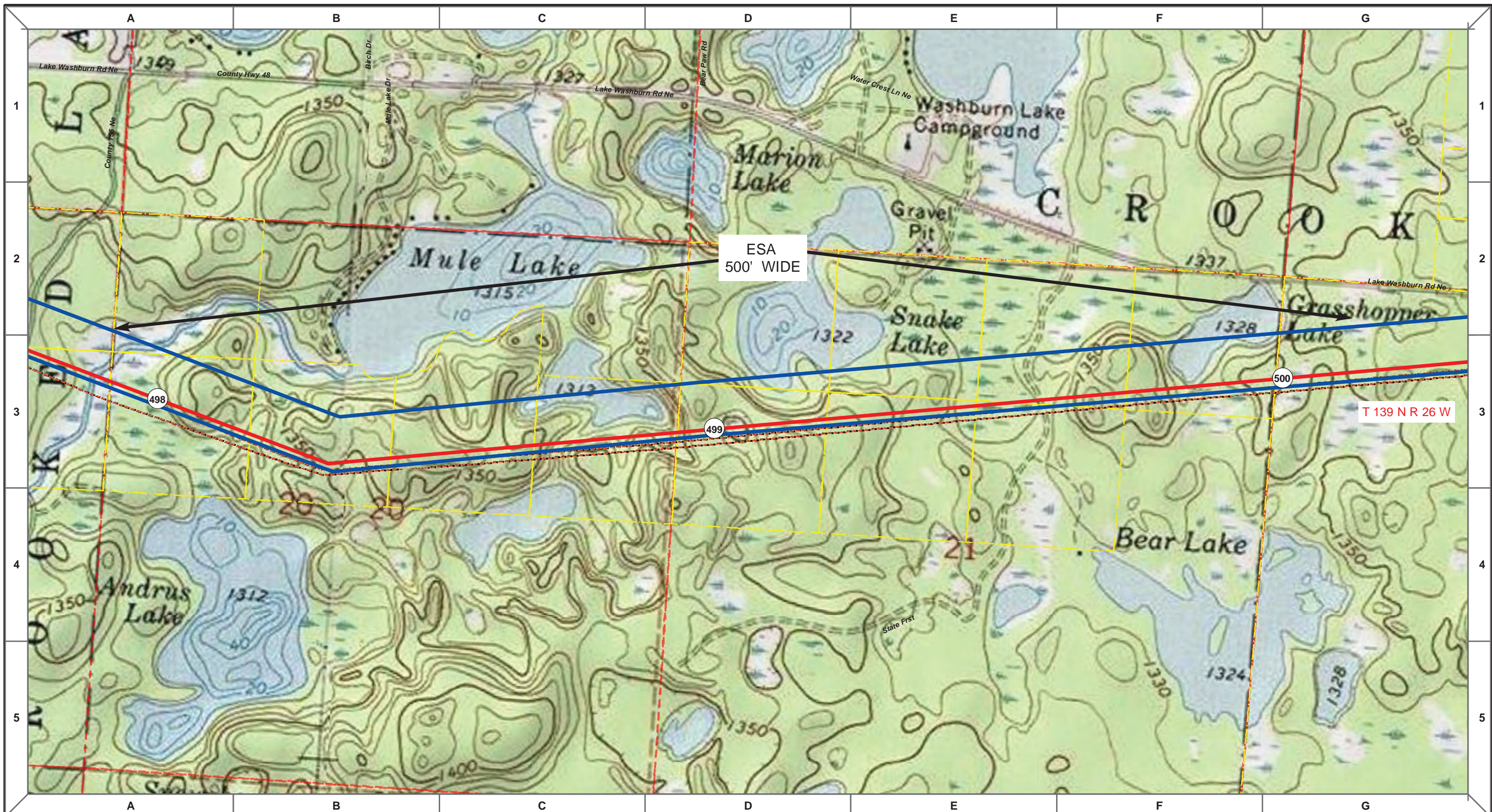
MLB	DATE	REV NO.	DESCRIPTION
	10/10/13	0	PUC Submittal

ENBRIDGE PIPELINES (NORTH DAKOTA) LLC

**PROPOSED SANDPIPER
PIPELINE PROJECT
ROUTE MAP
Cass County, MN**

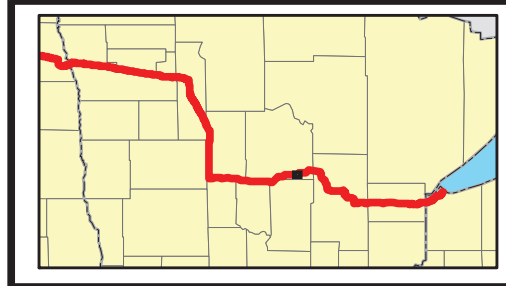
DRAWN: <i>MLB</i>	CHECKED: --
DATE: Oct 18, 2013	SCALE: AS SHOWN

Spread:7 Map: 84 of 128



ESA
500' WIDE

T 139 N R 26 W



- Proposed Pipeline - Sandpiper
- Existing Enbridge Pipelines
- Foreign Pipes
- - - Transmission Lines
- SPREAD BREAK
- 1 Milepost - Sandpiper
- ✕ Potential Block Valve
- Environmental Survey Area (ESA)
- Tract Boundary
- Facility Boundary
- Previously Sited Facility Boundary
- Section Lines



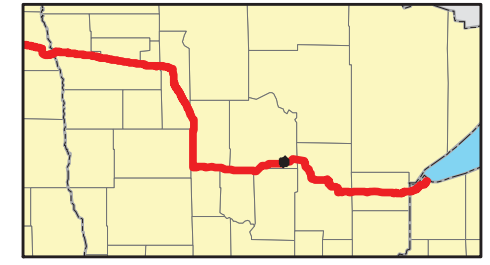
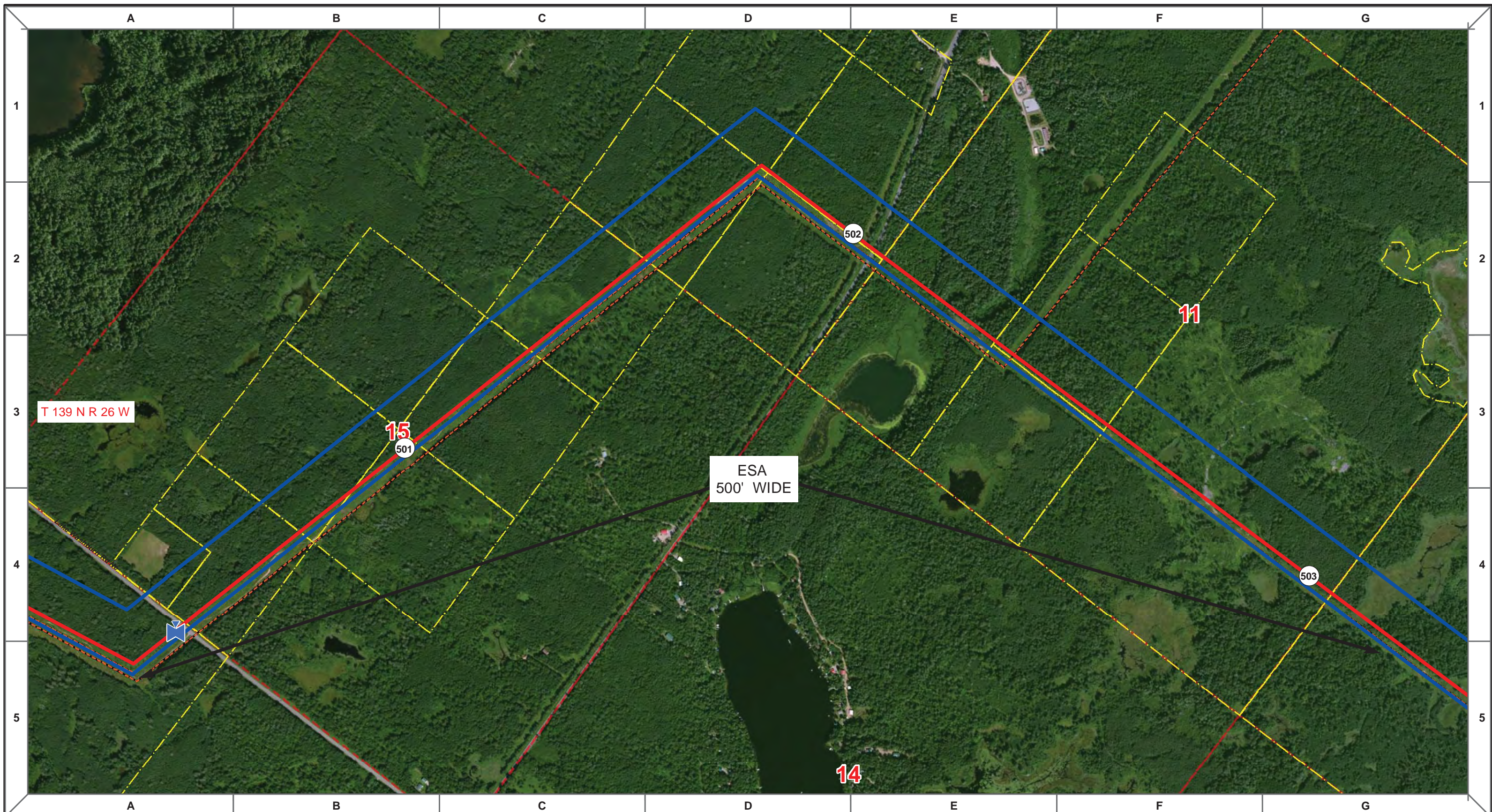
MLB		10/10/13	0		PUC Submittal
DRAWN	CHECKED	APPROVED	DATE	REV NO.	DESCRIPTION

ENBRIDGE PIPELINES (NORTH DAKOTA) LLC

**PROPOSED SANDPIPER
PIPELINE PROJECT
ROUTE MAP
Cass County, MN**

DRAWN: MLB	CHECKED: --
DATE: Oct 18, 2013	SCALE: AS SHOWN

Spread:7
Map: 84 of 128



- Proposed Pipeline - Sandpiper
- Existing Enbridge Pipelines
- Foreign Pipes
- Transmission Lines
- SPREAD BREAK
- 1 Milepost - Sandpiper
- ✱ Potential Block Valve
- Environmental Survey Area (ESA)
- Tract Boundary
- Facility Boundary
- Previously Sited Facility Boundary
- Section Lines



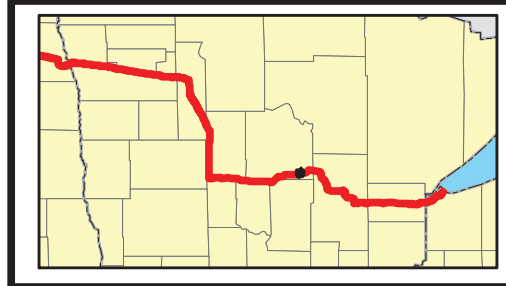
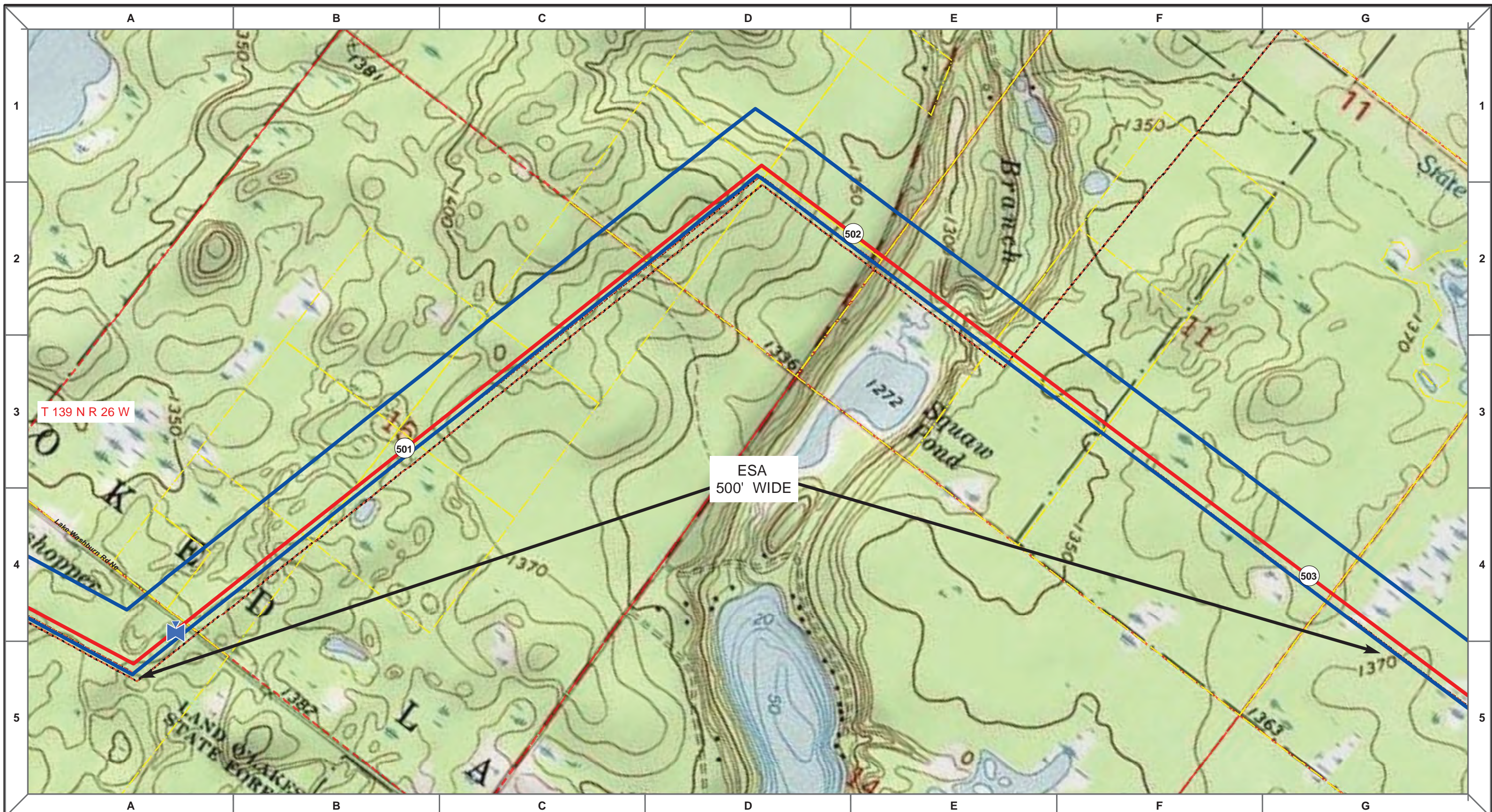
MLB	DATE	REV NO.	DESCRIPTION
	10/10/13	0	PUC Submittal

ENBRIDGE PIPELINES (NORTH DAKOTA) LLC

PROPOSED SANDPIPER PIPELINE PROJECT
ROUTE MAP
Cass County, MN

DRAWN: <i>MLB</i>	CHECKED: <i>--</i>
DATE: <i>Oct 18, 2013</i>	SCALE: <i>AS SHOWN</i>

Spread:7
Map: 85 of 128



	Proposed Pipeline - Sandpiper		Milepost - Sandpiper		Tract Boundary
	Existing Enbridge Pipelines		Potential Block Valve		Facility Boundary
	Foreign Pipes		Environmental Survey Area (ESA)		Previously Sited Facility Boundary
	Transmission Lines				Section Lines
	SPREAD BREAK				

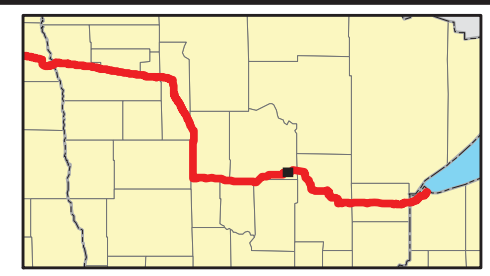
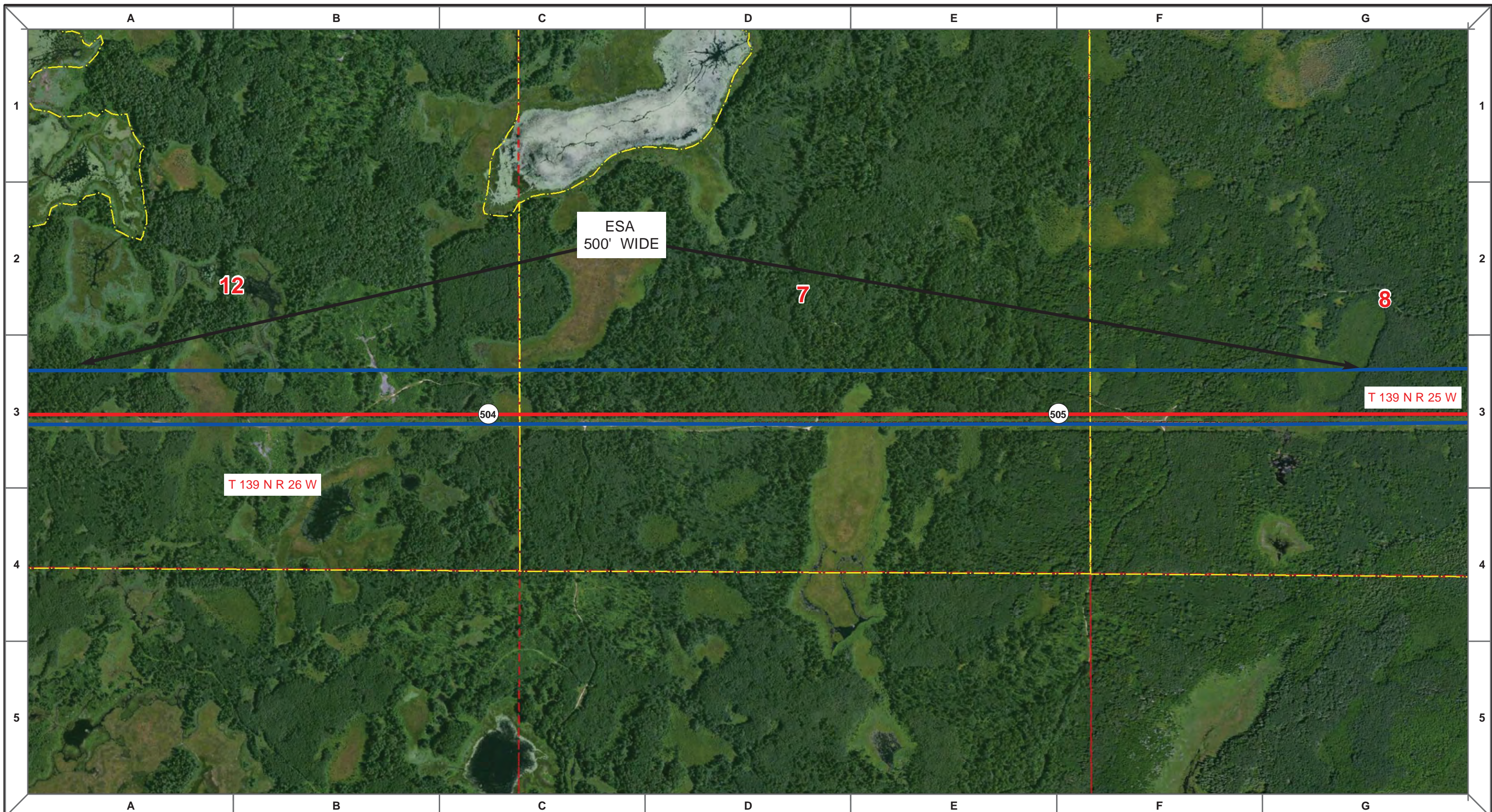
MLB	DATE	REV NO.	DESCRIPTION
	10/10/13	0	PUC Submittal

ENBRIDGE PIPELINES (NORTH DAKOTA) LLC

**PROPOSED SANDPIPER PIPELINE PROJECT
ROUTE MAP
Cass County, MN**

DRAWN: MLB	CHECKED: --
DATE: Oct 18, 2013	SCALE: AS SHOWN

Spread: 7 Map: 85 of 128



- Proposed Pipeline - Sandpiper
- Existing Enbridge Pipelines
- Foreign Pipes
- - - Transmission Lines
- SPREAD BREAK
- 1 Milepost - Sandpiper
- ✕ Potential Block Valve
- Environmental Survey Area (ESA)
- Tract Boundary
- Facility Boundary
- Previously Sited Facility Boundary
- Section Lines



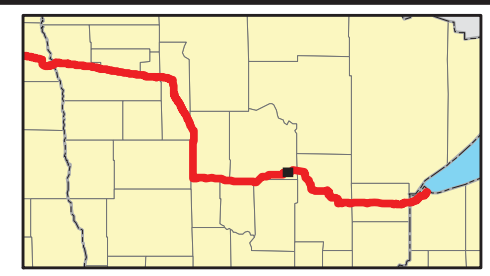
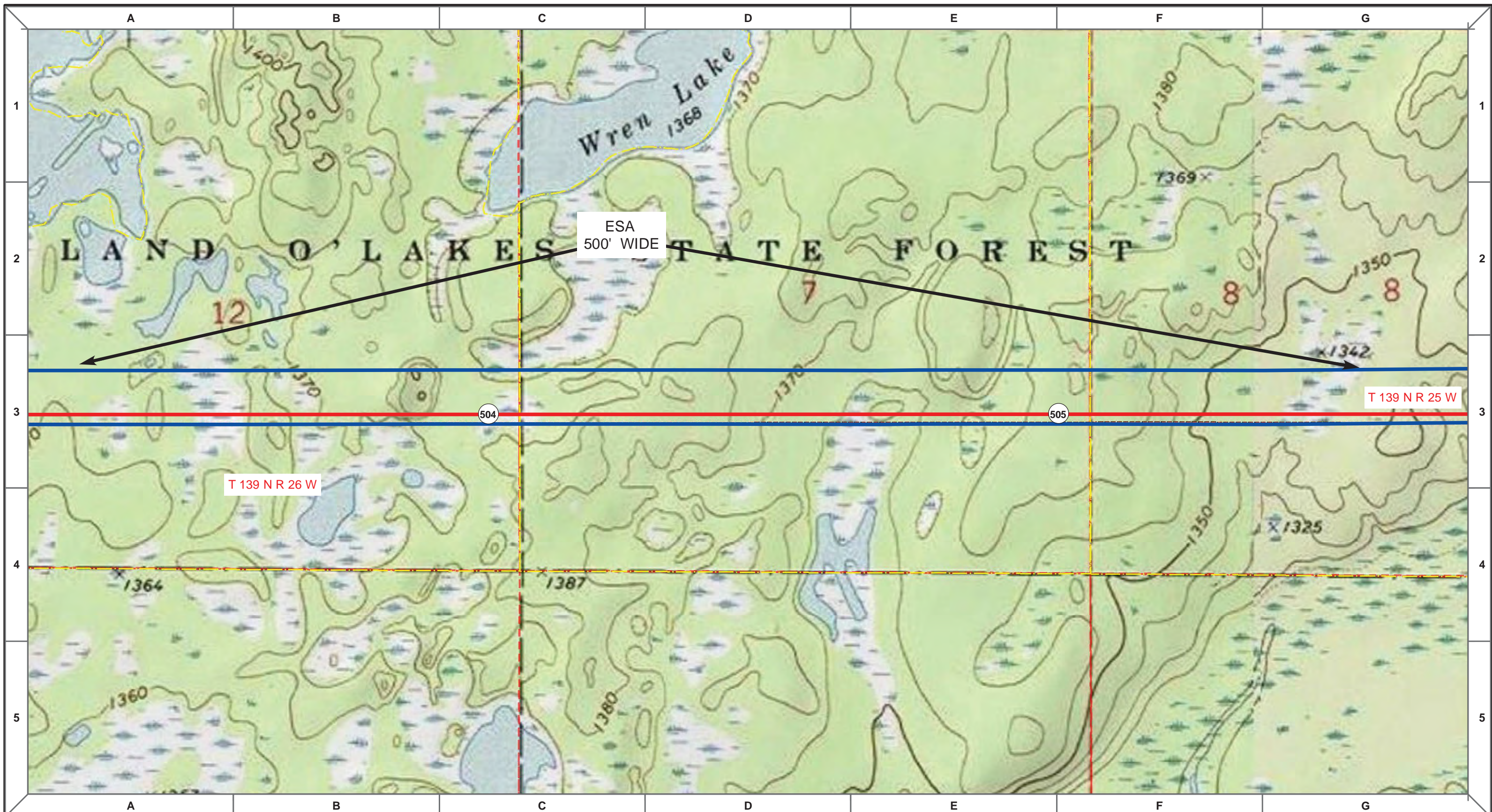
MLB			10/10/13	0				PUC Submittal	
DRAWN	CHECKED	APPROVED	DATE	REV NO.				DESCRIPTION	

ENBRIDGE PIPELINES (NORTH DAKOTA) LLC

**PROPOSED SANDPIPER
PIPELINE PROJECT
ROUTE MAP
Cass County, MN**

DRAWN: <i>MLB</i>	CHECKED: <i>--</i>
DATE: <i>Nov 05, 2013</i>	SCALE: <i>AS SHOWN</i>

Spread:7
Map: 86 of 128



Proposed Pipeline - Sandpiper	Milepost - Sandpiper	Tract Boundary
Existing Enbridge Pipelines	Potential Block Valve	Facility Boundary
Foreign Pipes	Environmental Survey Area (ESA)	Previously Sited Facility Boundary
Transmission Lines		Section Lines
SPREAD BREAK		

500 250 0 500 1,000 Feet

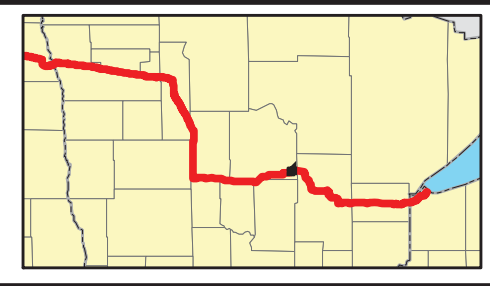
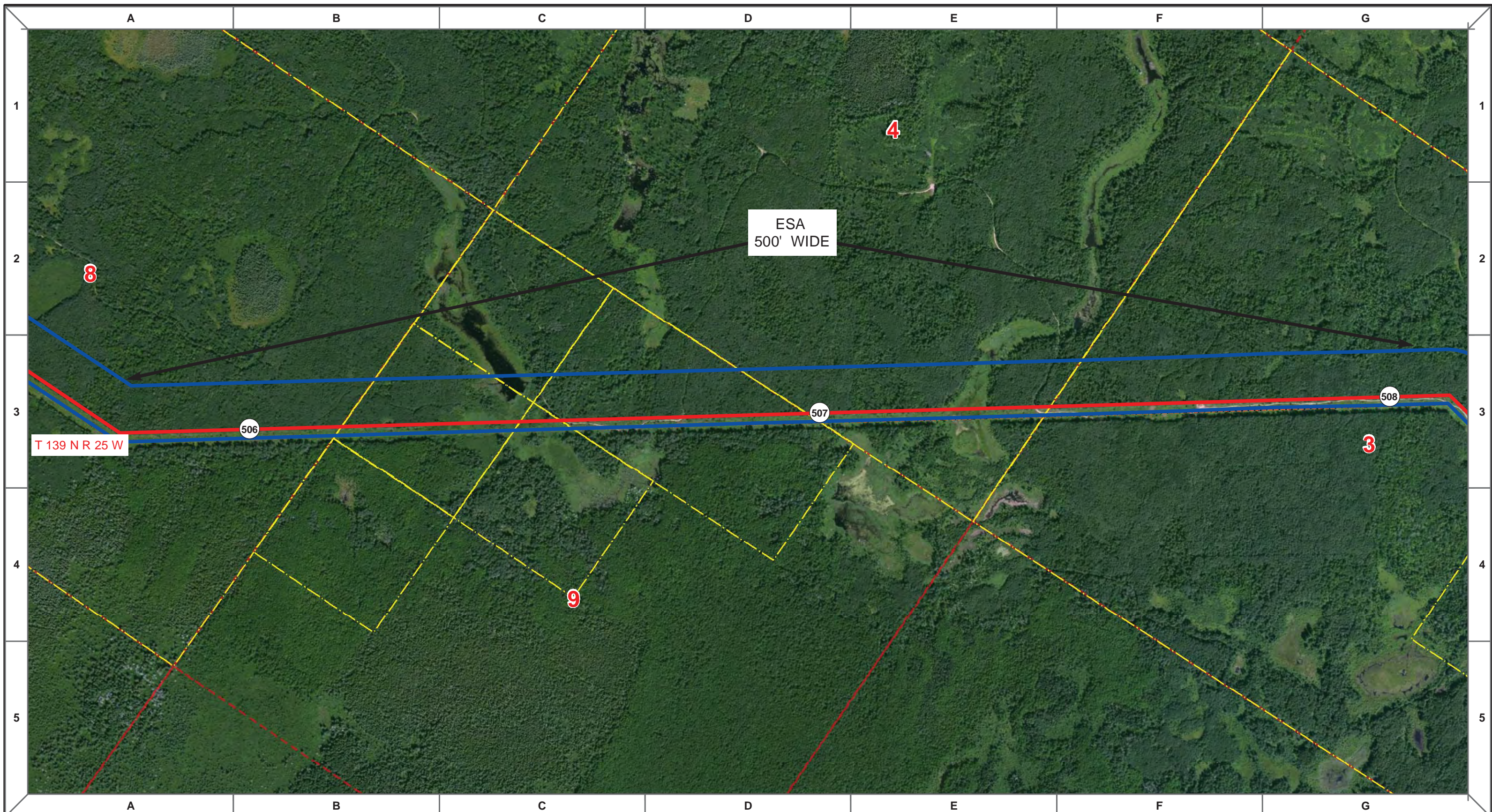
MLB		10/10/13	0		
DRAWN	CHECKED	APPROVED	DATE	REV NO.	DESCRIPTION

ENBRIDGE PIPELINES (NORTH DAKOTA) LLC

PROPOSED SANDPIPER PIPELINE PROJECT
ROUTE MAP
 Cass County, MN

DRAWN: <i>MLB</i>	CHECKED: <i>--</i>
DATE: <i>Nov 05, 2013</i>	SCALE: <i>AS SHOWN</i>

Spread:7 Map: 86 of 128



Proposed Pipeline - Sandpiper	Milepost - Sandpiper	Tract Boundary
Existing Enbridge Pipelines	Potential Block Valve	Facility Boundary
Foreign Pipes	Environmental Survey Area (ESA)	Previously Sited Facility Boundary
Transmission Lines		Section Lines
SPREAD BREAK		

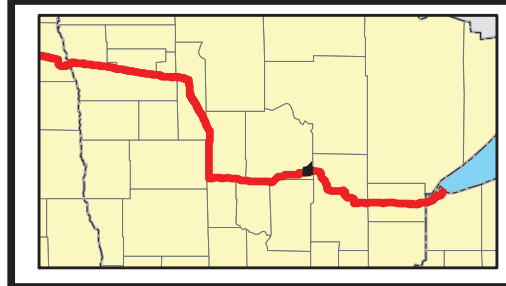
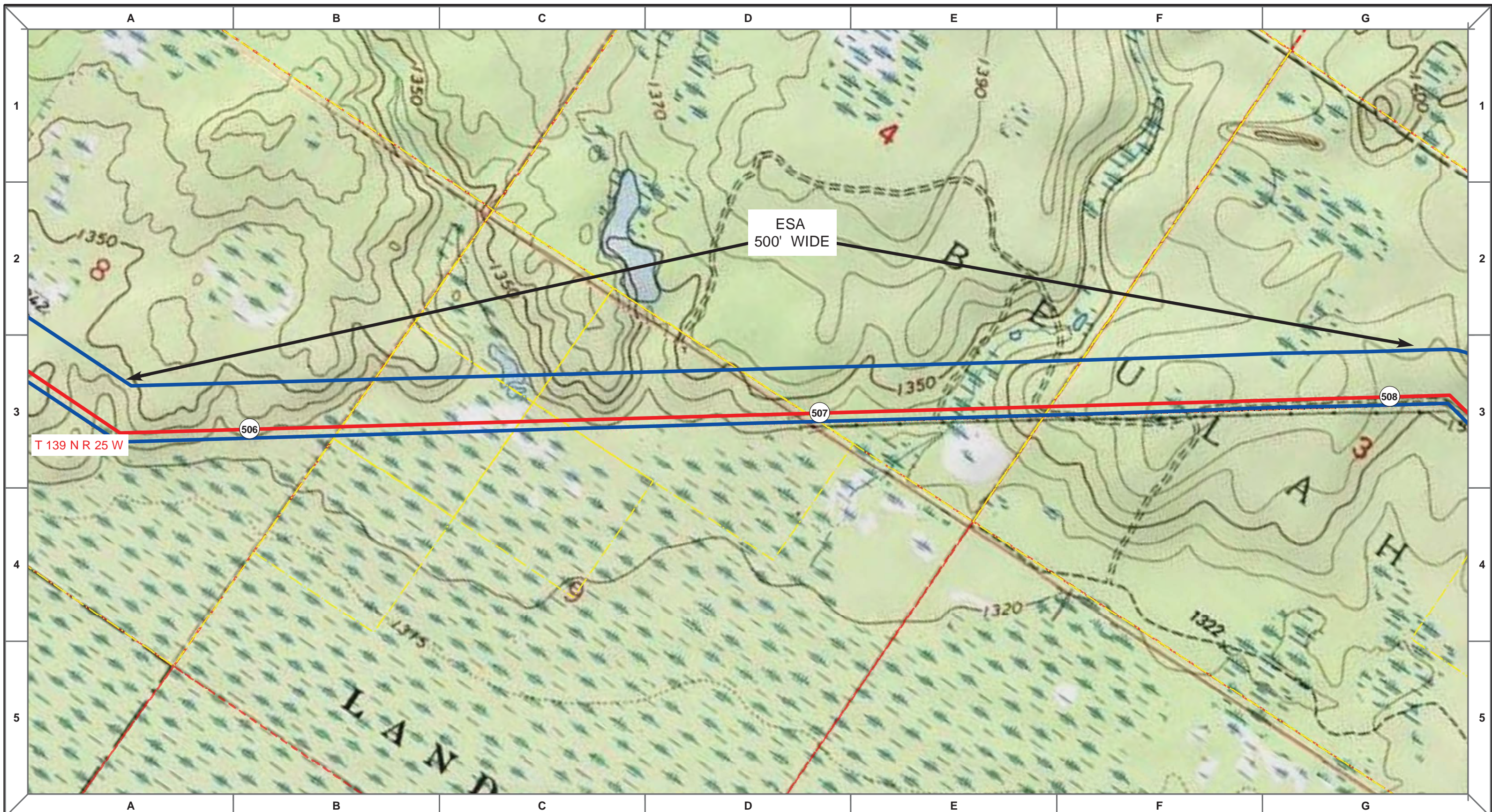
DRAWN	CHECKED	APPROVED	DATE	REV NO.	DESCRIPTION
MLB			10/10/13	0	PUC Submittal

ENBRIDGE PIPELINES (NORTH DAKOTA) LLC

PROPOSED SANDPIPER PIPELINE PROJECT
ROUTE MAP
Cass County, MN

<small>DRAWN:</small> MLB	<small>CHECKED:</small> --
<small>DATE:</small> Oct 18, 2013	<small>SCALE:</small> AS SHOWN

Spread:7 Map: 87 of 128



- Proposed Pipeline - Sandpiper
- Existing Enbridge Pipelines
- Foreign Pipes
- - - Transmission Lines
- SPREAD BREAK
- 1 Milepost - Sandpiper
- ✚ Potential Block Valve
- Environmental Survey Area (ESA)
- Tract Boundary
- Facility Boundary
- Previously Sited Facility Boundary
- Section Lines



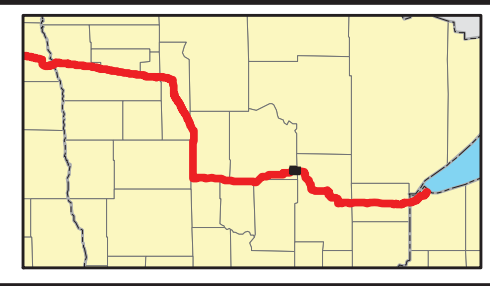
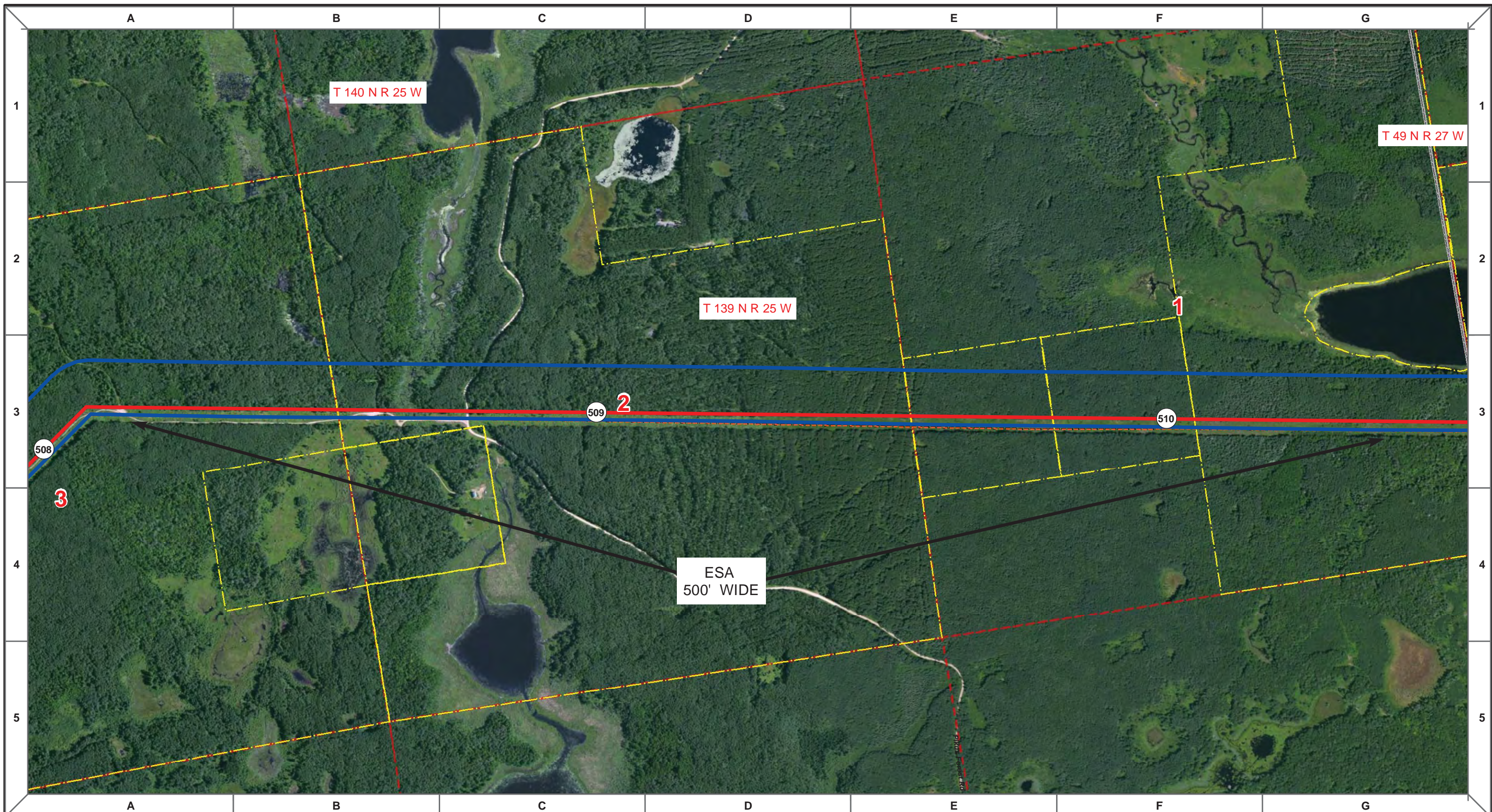
MLB			10/10/13	0			PUC Submittal		
DRAWN	CHECKED	APPROVED	DATE	REV NO.			DESCRIPTION		

ENBRIDGE PIPELINES (NORTH DAKOTA) LLC

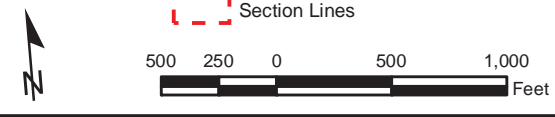
**PROPOSED SANDPIPER
PIPELINE PROJECT
ROUTE MAP
Cass County, MN**

DRAWN: MLB	CHECKED: --
DATE: Oct 18, 2013	SCALE: AS SHOWN

Spread:7
Map: 87 of 128



- Proposed Pipeline - Sandpiper
- Existing Enbridge Pipelines
- Foreign Pipes
- Transmission Lines
- SPREAD BREAK
- 1 Milepost - Sandpiper
- X Potential Block Valve
- Environmental Survey Area (ESA)
- Tract Boundary
- Facility Boundary
- Previously Sited Facility Boundary
- Section Lines



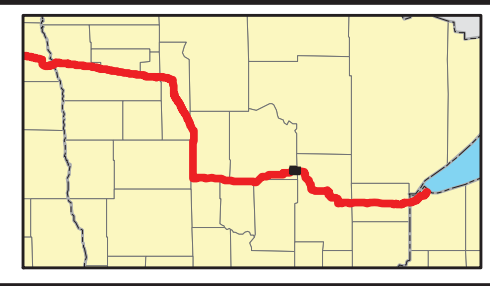
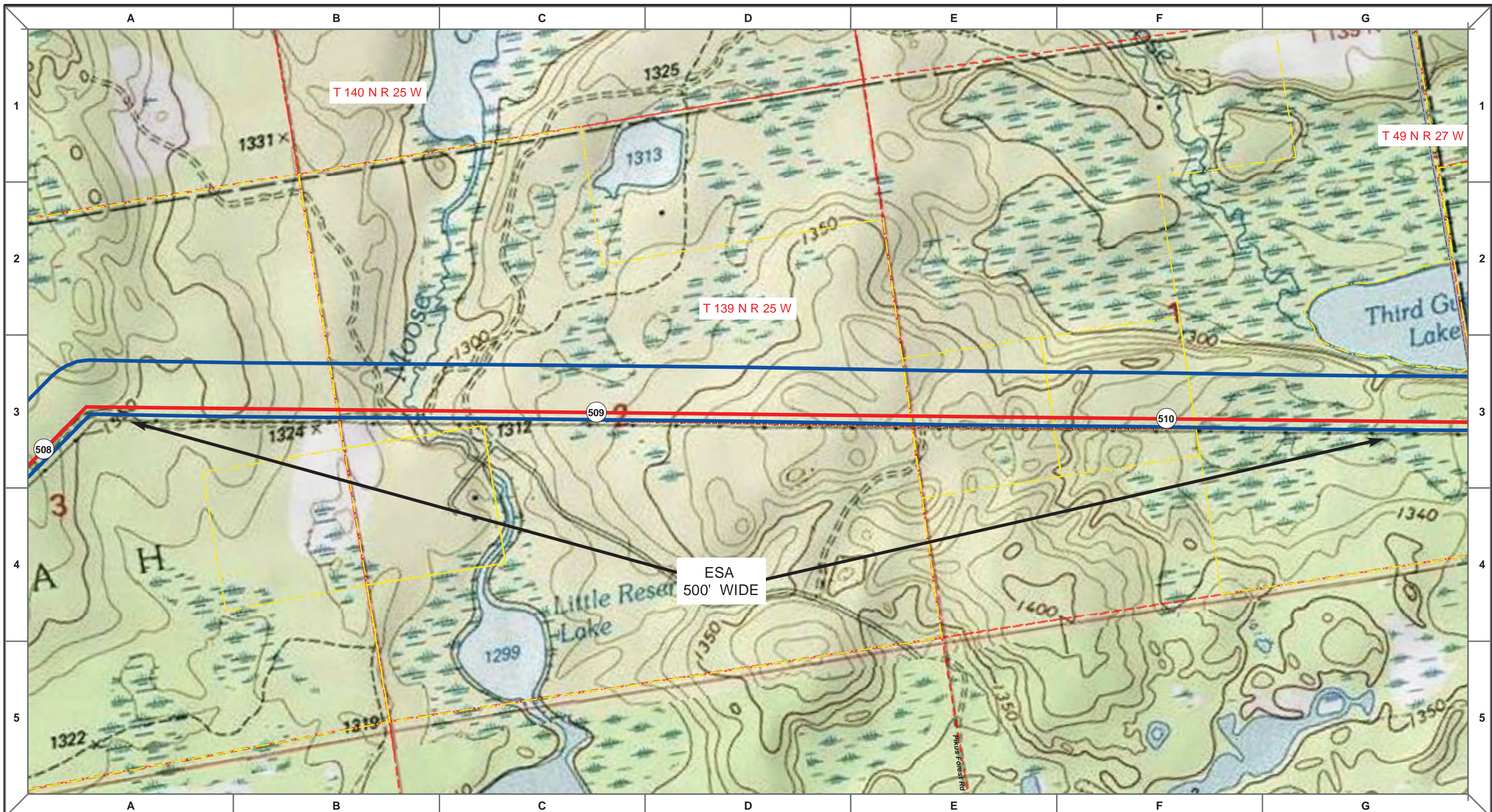
MLB	CHECKED	APPROVED	DATE	REV NO.	DESCRIPTION
			10/10/13	0	PUC Submittal

ENBRIDGE PIPELINES (NORTH DAKOTA) LLC

PROPOSED SANDPIPER PIPELINE PROJECT
ROUTE MAP
Cass County, MN

DRAWN: <i>MLB</i>	CHECKED: <i>--</i>
DATE: <i>Oct 18, 2013</i>	SCALE: <i>AS SHOWN</i>

Spread:7
Map: 88 of 128



Proposed Pipeline - Sandpiper	Milepost - Sandpiper	Tract Boundary
Existing Enbridge Pipelines	Potential Block Valve	Facility Boundary
Foreign Pipes	Environmental Survey Area (ESA)	Previously Sited Facility Boundary
Transmission Lines		Section Lines
SPREAD BREAK		

500 250 0 500 1,000 Feet

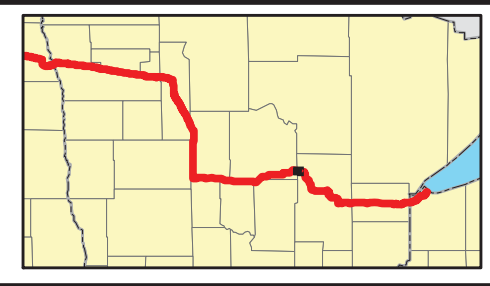
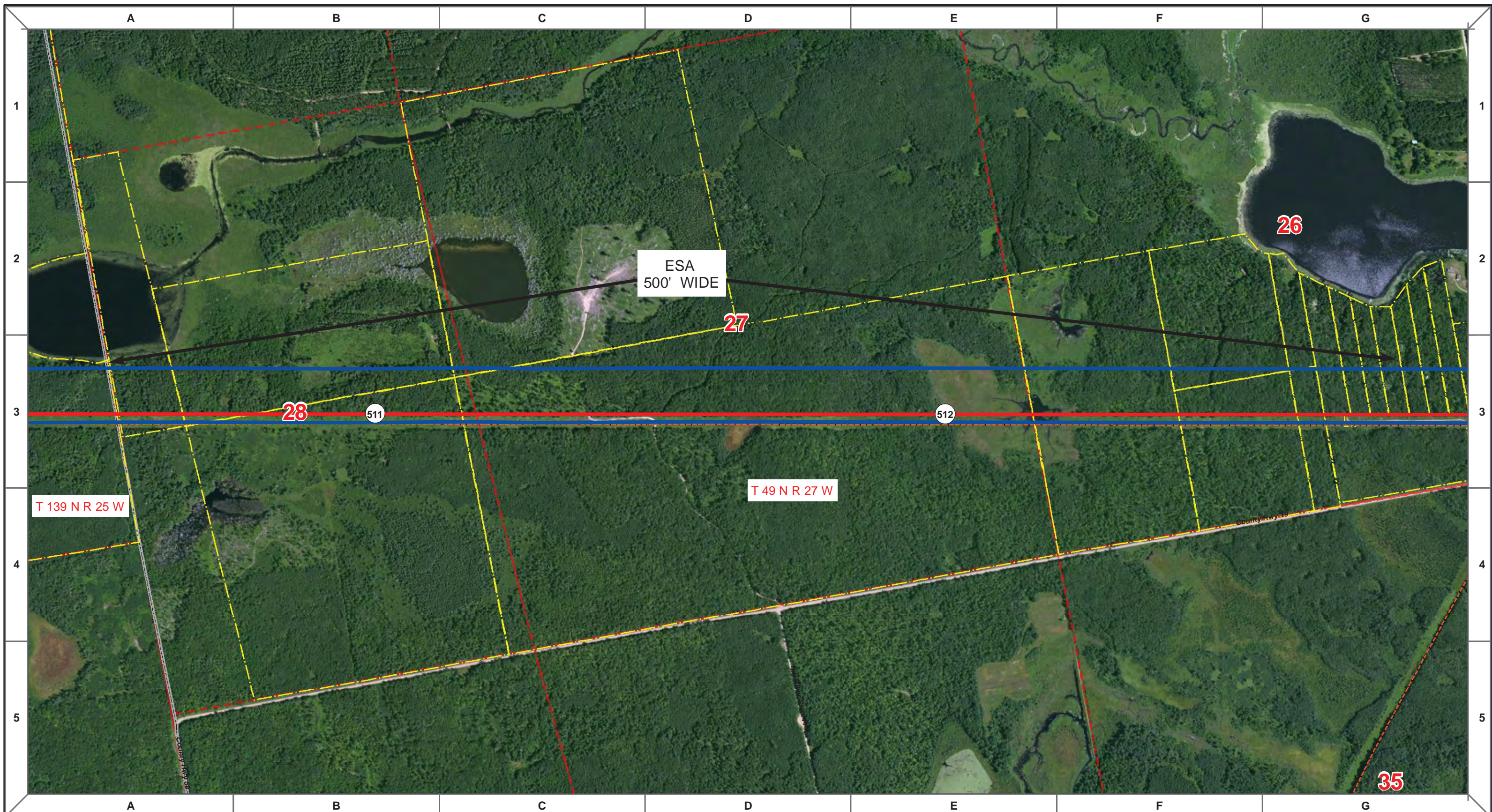
MLB	DATE	REV NO.	DESCRIPTION
	10/10/13	0	PUC Submittal

ENBRIDGE PIPELINES (NORTH DAKOTA) LLC

PROPOSED SANDPIPER PIPELINE PROJECT
ROUTE MAP
Cass County, MN

DRAWN: MLB	CHECKED: --
DATE: Oct 18, 2013	SCALE: AS SHOWN

Spread:7 Map: 88 of 128



Proposed Pipeline - Sandpiper	Existing Enbridge Pipelines	Tract Boundary
Foreign Pipes	Potential Block Valve	Facility Boundary
Transmission Lines	Environmental Survey Area (ESA)	Previously Sited Facility Boundary
SPREAD BREAK	Milepost - Sandpiper	Section Lines

500 250 0 500 1,000
 Feet

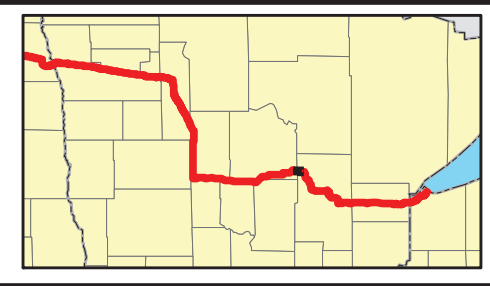
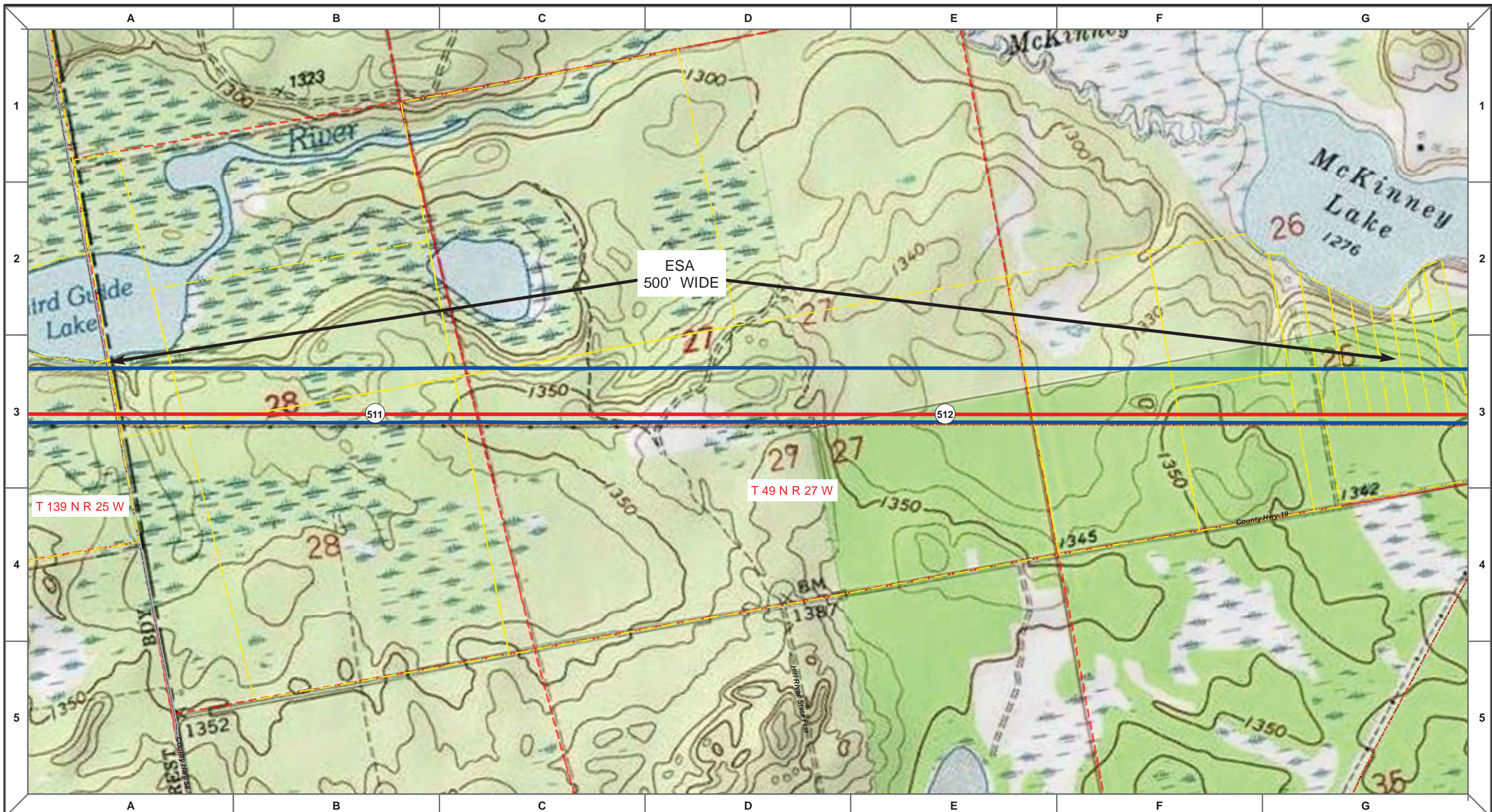
MLB	CHECKED	APPROVED	DATE	REV NO.	DESCRIPTION
			10/10/13	0	PUC Submittal

ENBRIDGE PIPELINES (NORTH DAKOTA) LLC

**PROPOSED SANDPIPER
PIPELINE PROJECT
ROUTE MAP
Cass & Aitkin County, MN**

<small>DRAWN:</small> MLB	<small>CHECKED:</small> --
<small>DATE:</small> Oct 18, 2013	<small>SCALE:</small> AS SHOWN

Spread:7
Map: 89 of 128



Proposed Pipeline - Sandpiper	Milepost - Sandpiper	Tract Boundary
Existing Enbridge Pipelines	Potential Block Valve	Facility Boundary
Foreign Pipes	Environmental Survey Area (ESA)	Previously Sited Facility Boundary
Transmission Lines		Section Lines
SPREAD BREAK		

500 250 0 500 1,000 Feet

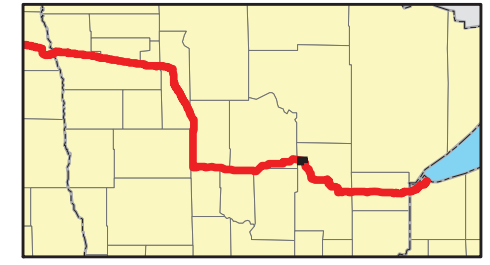
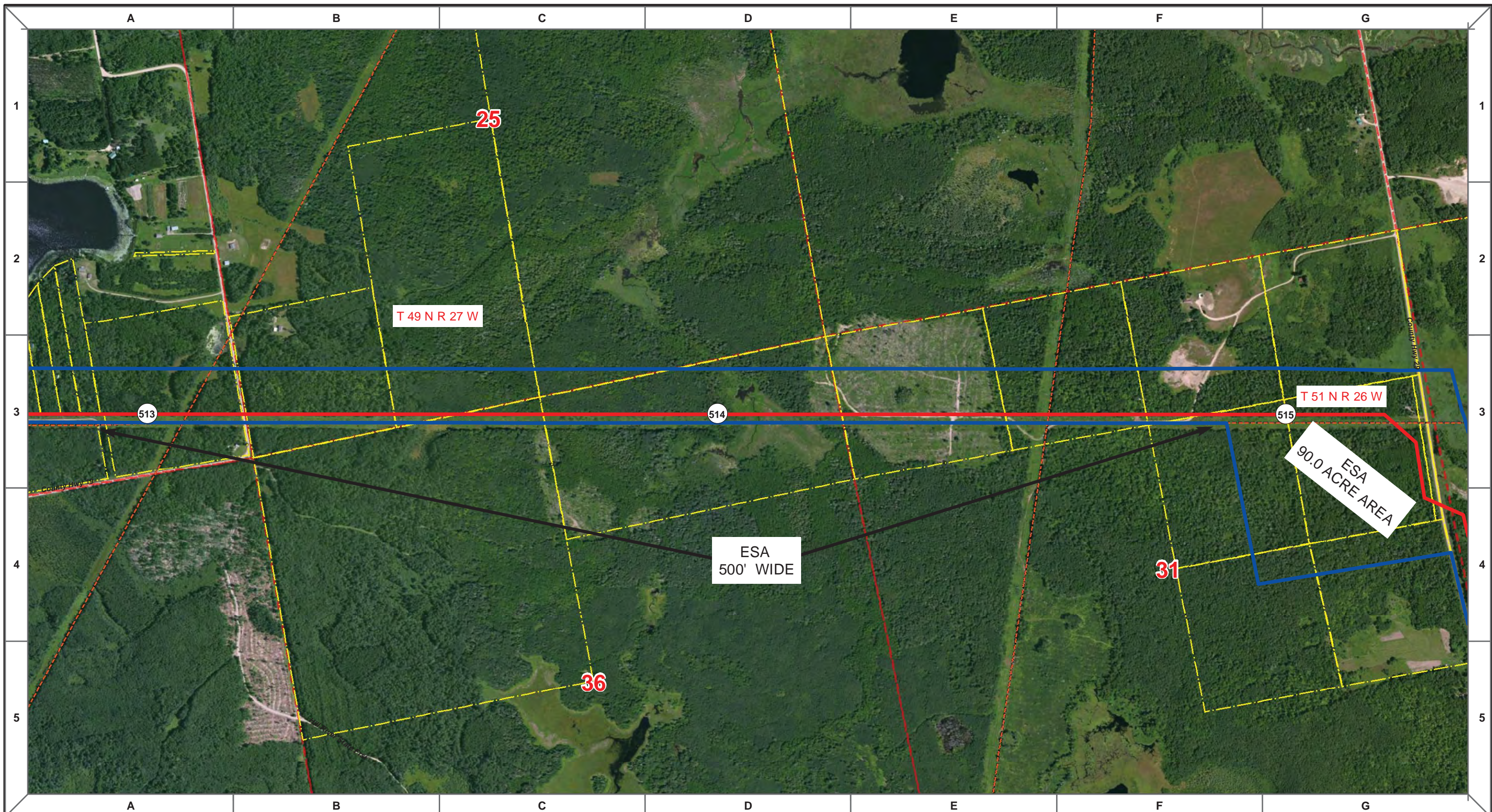
MLB	DATE	REV NO.	DESCRIPTION
	10/10/13	0	PUC Submittal

ENBRIDGE PIPELINES (NORTH DAKOTA) LLC

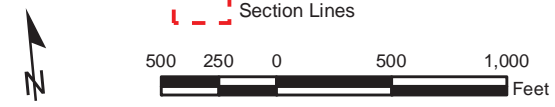
PROPOSED SANDPIPER PIPELINE PROJECT
ROUTE MAP
Cass & Aitkin County, MN

<small>DRAWN:</small> MLB	<small>CHECKED:</small> --
<small>DATE:</small> Oct 18, 2013	<small>SCALE:</small> AS SHOWN

Spread: 7 Map: 89 of 128



- Proposed Pipeline - Sandpiper
- Existing Enbridge Pipelines
- - - Foreign Pipes
- - - Transmission Lines
- SPREAD BREAK
- 1 Milepost - Sandpiper
- ✕ Potential Block Valve
- Environmental Survey Area (ESA)
- Tract Boundary
- Facility Boundary
- Previously Sited Facility Boundary
- Section Lines



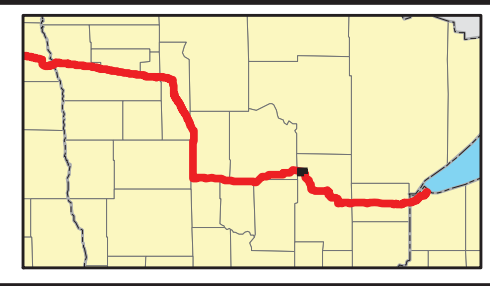
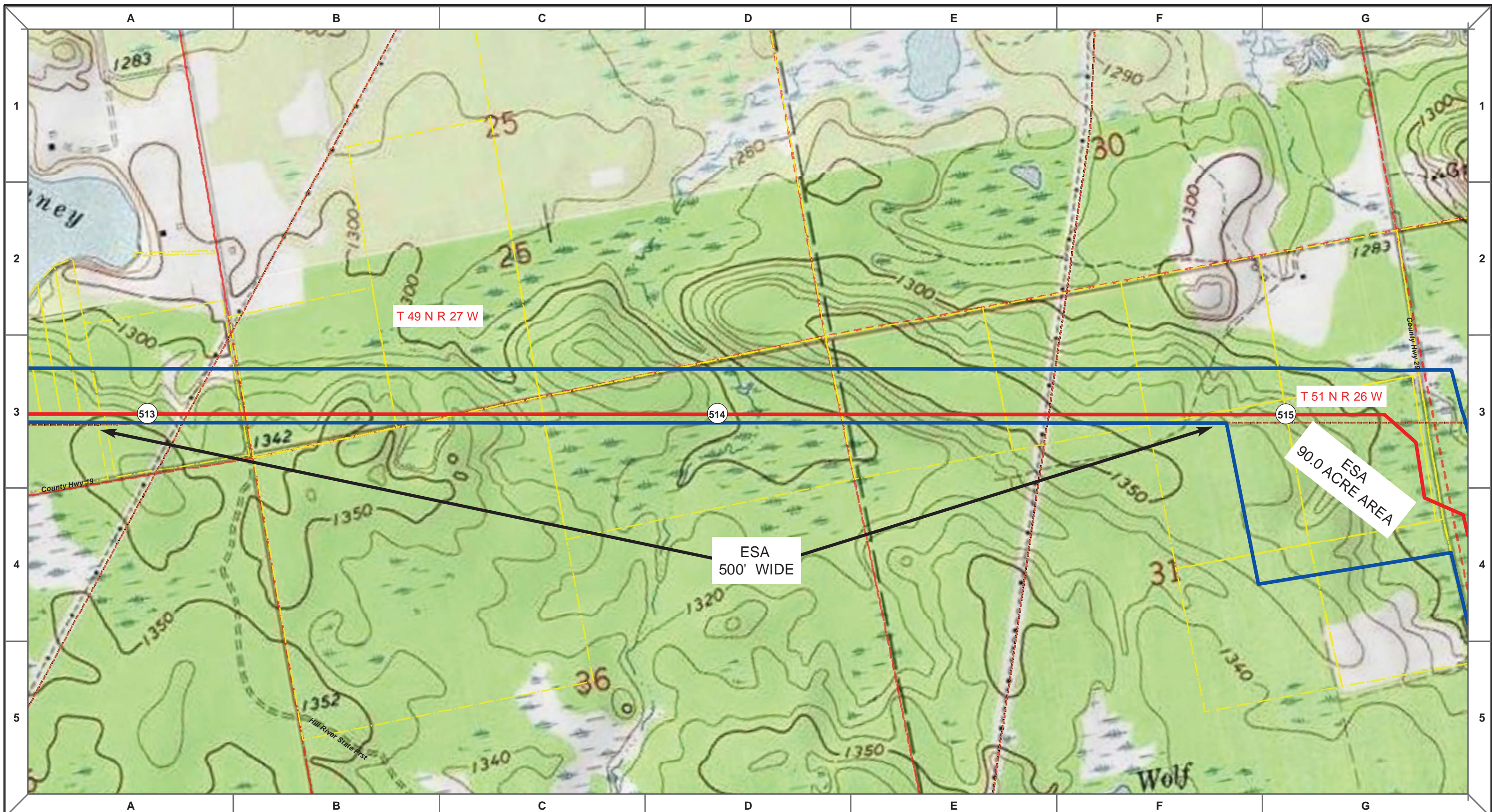
MLB		10/10/13	0		
DRAWN	CHECKED	APPROVED	DATE	REV NO.	DESCRIPTION
					PUC Submittal

ENBRIDGE PIPELINES (NORTH DAKOTA) LLC

**PROPOSED SANDPIPER PIPELINE PROJECT
ROUTE MAP
Aitkin County, MN**

DRAWN: MLB	CHECKED: --
DATE: Oct 18, 2013	SCALE: AS SHOWN

Spread:7 Map: 90 of 128



Proposed Pipeline - Sandpiper	Milepost - Sandpiper	Tract Boundary
Existing Enbridge Pipelines	Potential Block Valve	Facility Boundary
Foreign Pipes	Environmental Survey Area (ESA)	Previously Sited Facility Boundary
Transmission Lines		Section Lines
SPREAD BREAK		

500 250 0 500 1,000 Feet

MLB	DATE	REV NO.	DESCRIPTION
	10/10/13	0	PUC Submittal

ENBRIDGE PIPELINES (NORTH DAKOTA) LLC

**PROPOSED SANDPIPER PIPELINE PROJECT
ROUTE MAP
Aitkin County, MN**

DRAWN: MLB	CHECKED: --
DATE: Oct 18, 2013	SCALE: AS SHOWN

Spread:7 Map: 90 of 128