

Proposed Pipeline - Sandpiper	Milepost - Sandpiper	Tract Boundary
Existing Enbridge Pipelines	Potential Block Valve	Facility Boundary
Foreign Pipes	Environmental Survey Area (ESA)	Previously Sited Facility Boundary
Transmission Lines		Section Lines
SPREAD BREAK		

500 250 0 500 1,000 Feet

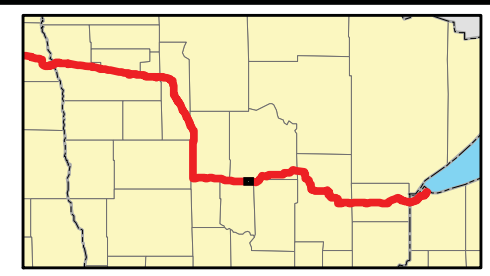
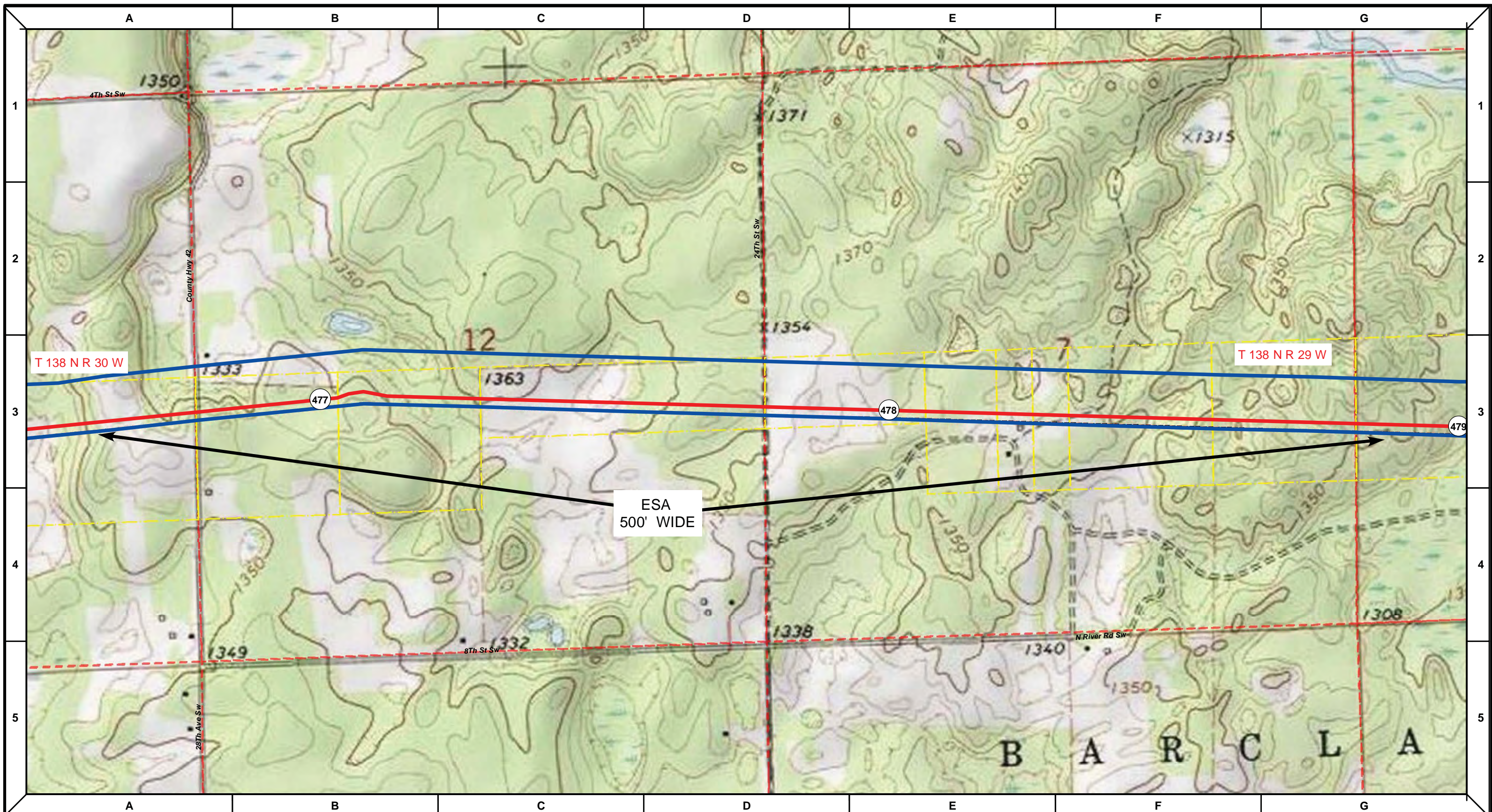
DRAWN	CHECKED	APPROVED	DATE	REV NO.	DESCRIPTION
			1/29/14	2	PUC Update - Revision D-2 Alignment
			12/19/13	1	PUC Update - Revision D Alignment
			10/10/13	0	PUC Submittal

NORTH DAKOTA PIPELINE COMPANY LLC

**PROPOSED SANDPIPER  
 PIPELINE PROJECT  
 ROUTE MAP  
 Cass County, MN**

DRAWN: <b>MLB</b>	CHECKED: --
DATE: Jan 30, 2014	SCALE: AS SHOWN

Spread:7 Map: 75 of 123



Proposed Pipeline - Sandpiper	Milepost - Sandpiper	Tract Boundary
Existing Enbridge Pipelines	Potential Block Valve	Facility Boundary
Foreign Pipes	Environmental Survey Area (ESA)	Previously Sited Facility Boundary
Transmission Lines		Section Lines
SPREAD BREAK		

500 250 0 500 1,000 Feet

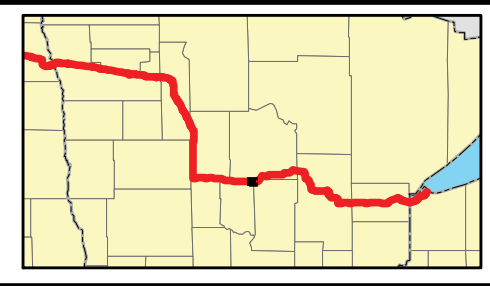
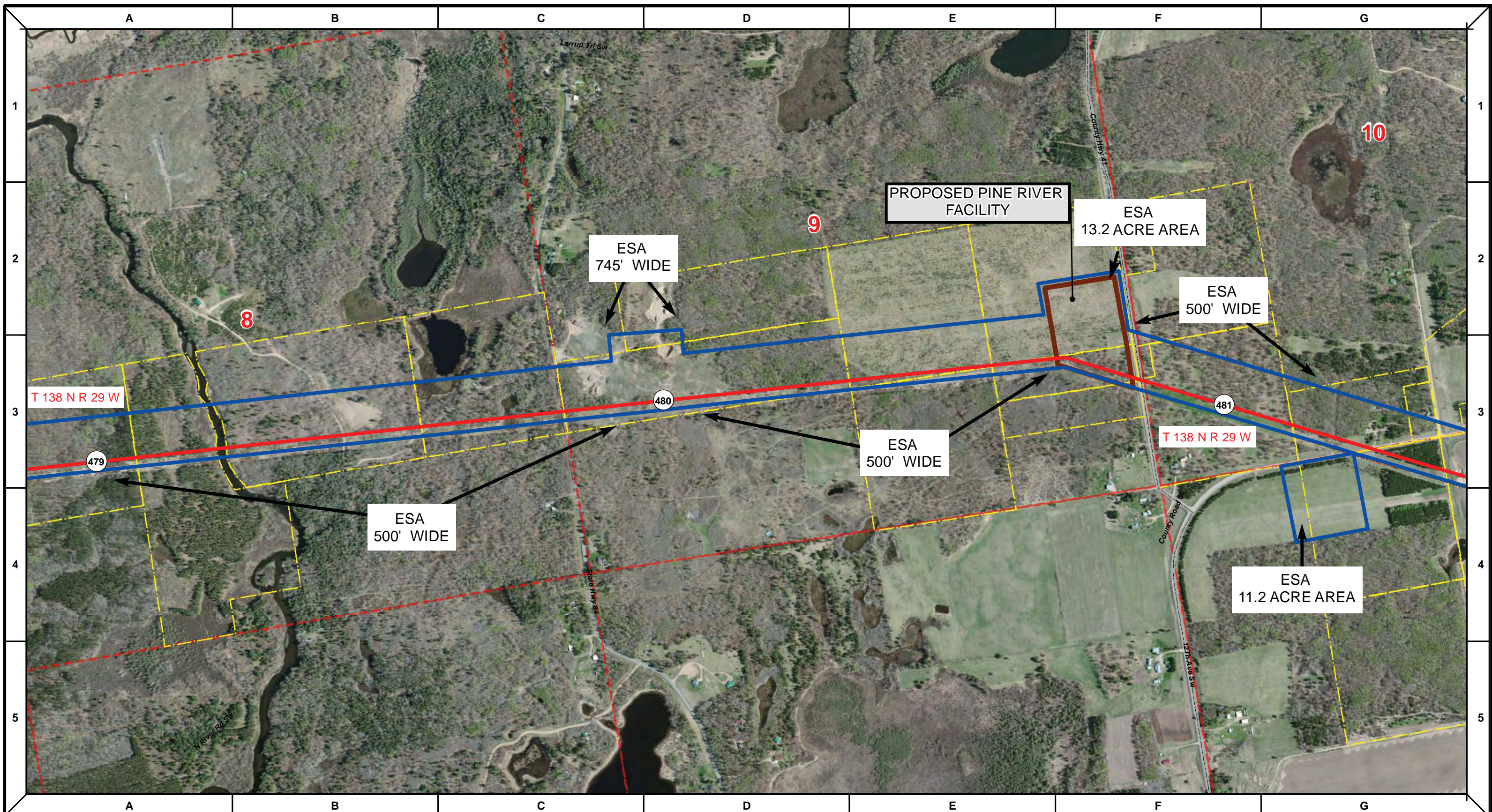
DRAWN	CHECKED	APPROVED	DATE	REV NO.	DESCRIPTION
			1/29/14	2	PUC Update - Revision D-2 Alignment
			12/19/13	1	PUC Update - Revision D Alignment
			10/10/13	0	PUC Submittal

NORTH DAKOTA PIPELINE COMPANY LLC

**PROPOSED SANDPIPER PIPELINE PROJECT**  
 ROUTE MAP  
 Cass County, MN

DRAWN: <b>MLB</b>	CHECKED: <b>--</b>
DATE: <b>Jan 30, 2014</b>	SCALE: <b>AS SHOWN</b>

Spread:7 Map: 75 of 123



Proposed Pipeline - Sandpiper	Milepost - Sandpiper	Tract Boundary
Existing Enbridge Pipelines	Potential Block Valve	Facility Boundary
Foreign Pipes	Environmental Survey Area (ESA)	Previously Sited Facility Boundary
Transmission Lines		Section Lines
SPREAD BREAK		

500 250 0 500 1,000 Feet

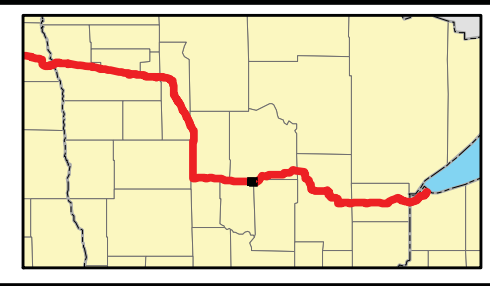
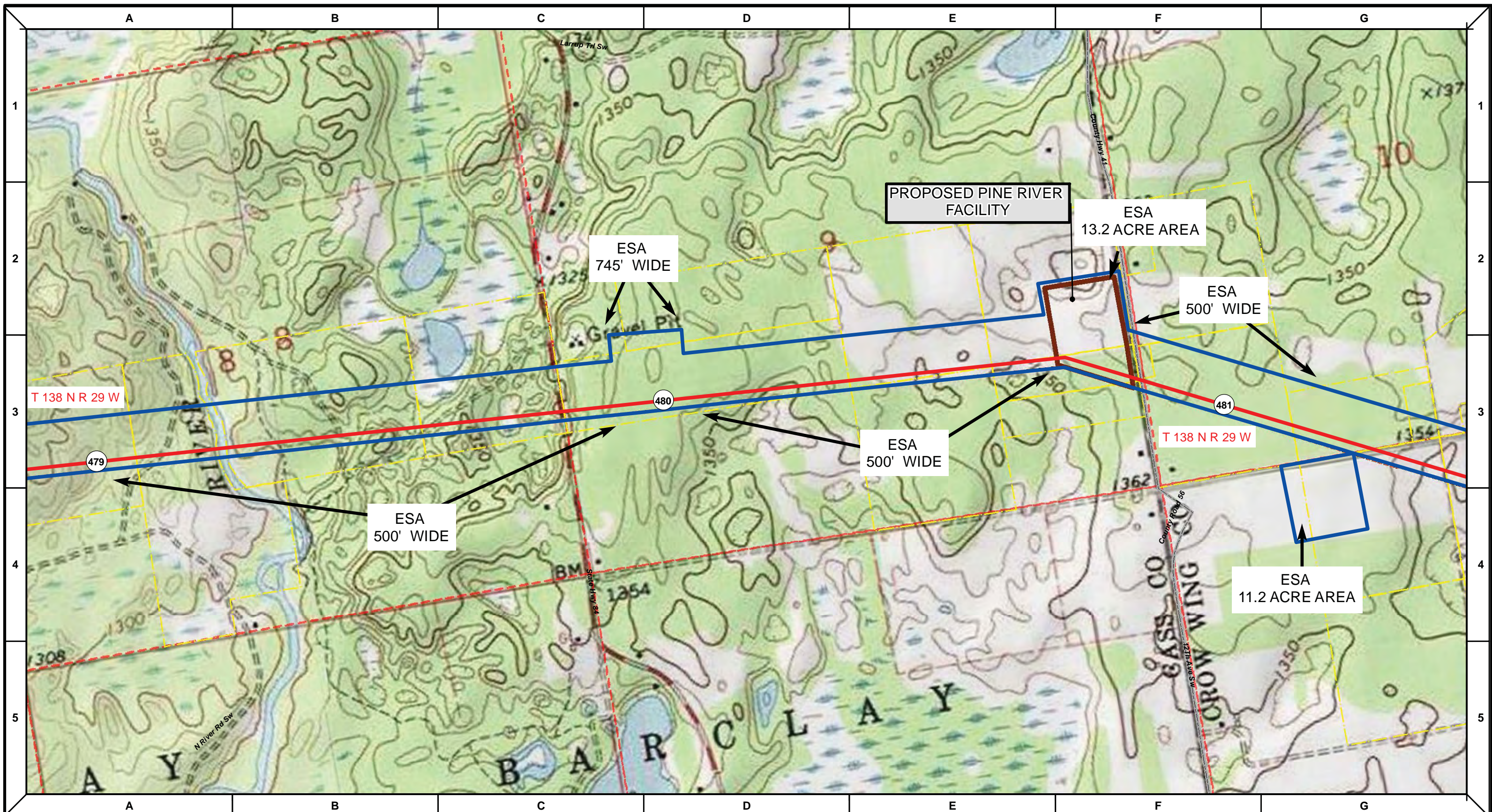
DRAWN	CHECKED	APPROVED	DATE	REV NO.	DESCRIPTION
			1/29/14	2	PUC Update - Revision D-2 Alignment
			12/19/13	1	PUC Update - Revision D Alignment
			10/10/13	0	PUC Submittal

NORTH DAKOTA PIPELINE COMPANY LLC

**PROPOSED SANDPIPER PIPELINE PROJECT**  
 ROUTE MAP  
 Cass & Crow Wing County, MN

DRAWN: <b>MLB</b>	CHECKED: <b>--</b>
DATE: <b>Jan 30, 2014</b>	SCALE: <b>AS SHOWN</b>

Spread:7 Map: 76 of 123



Proposed Pipeline - Sandpiper	Milepost - Sandpiper	Tract Boundary
Existing Enbridge Pipelines	Potential Block Valve	Facility Boundary
Foreign Pipes	Environmental Survey Area (ESA)	Previously Sited Facility Boundary
Transmission Lines		Section Lines
SPREAD BREAK		

500 250 0 500 1,000 Feet

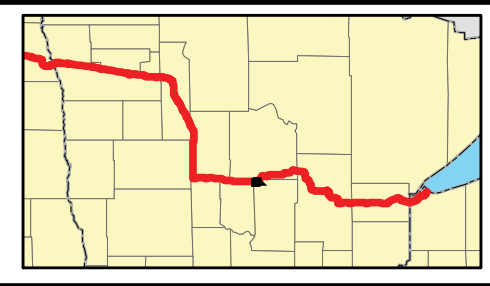
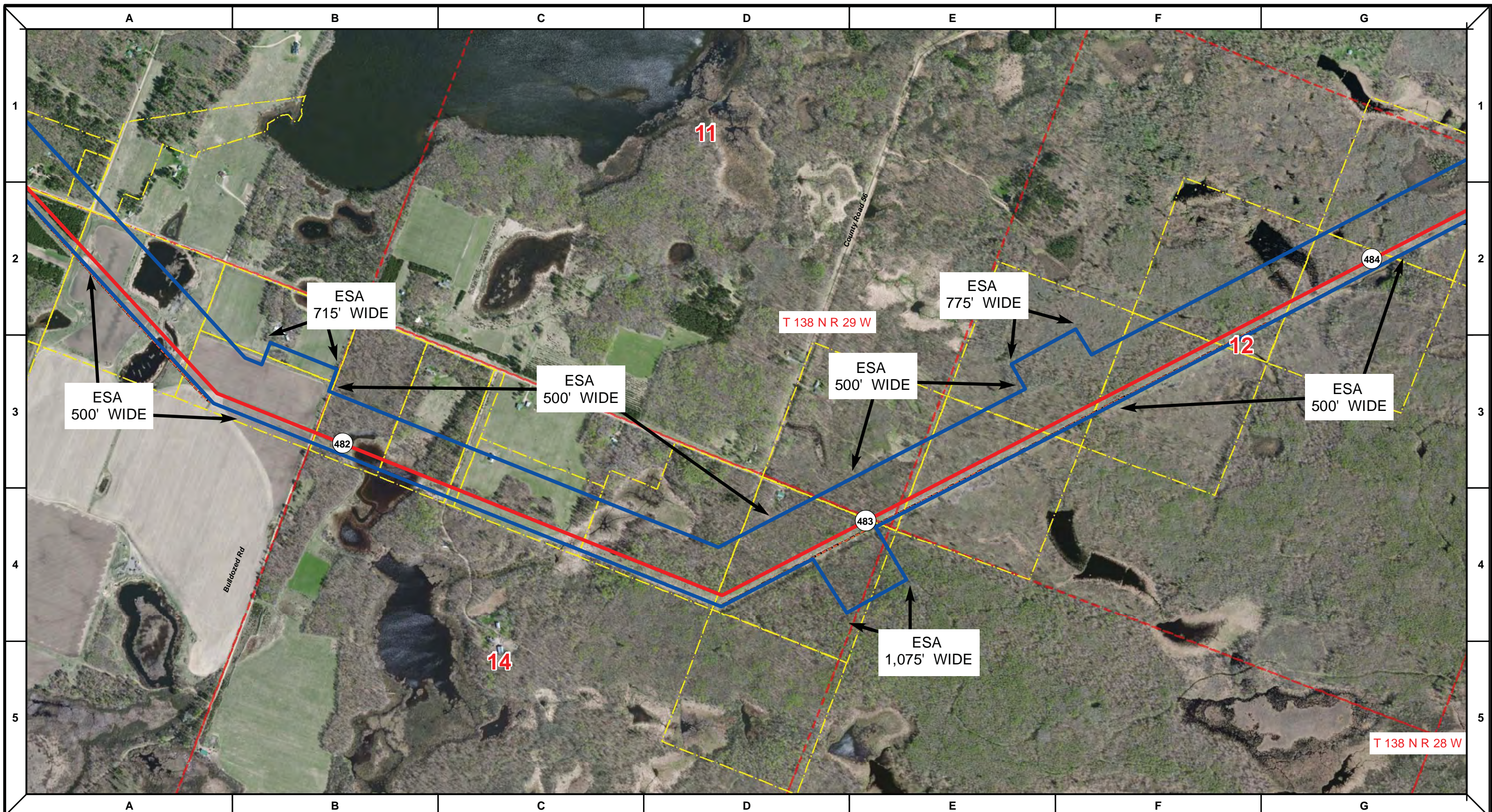
DRAWN	CHECKED	APPROVED	DATE	REV NO.	DESCRIPTION
			1/29/14	2	PUC Update - Revision D-2 Alignment
			12/19/13	1	PUC Update - Revision D Alignment
			10/10/13	0	PUC Submittal

**ENBRIDGE**  
NORTH DAKOTA PIPELINE COMPANY LLC

**PROPOSED SANDPIPER PIPELINE PROJECT**  
ROUTE MAP  
Cass & Crow Wing County, MN

DRAWN: <b>MLB</b>	CHECKED: <b>--</b>
DATE: <b>Jan 30, 2014</b>	SCALE: <b>AS SHOWN</b>

Spread:7 Map: 76 of 123



Proposed Pipeline - Sandpiper	Milepost - Sandpiper	Tract Boundary
Existing Enbridge Pipelines	Potential Block Valve	Facility Boundary
Foreign Pipes	Environmental Survey Area (ESA)	Previously Sited Facility Boundary
Transmission Lines		Section Lines
SPREAD BREAK		

500 250 0 500 1,000 Feet

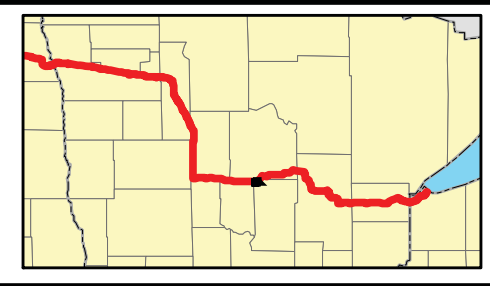
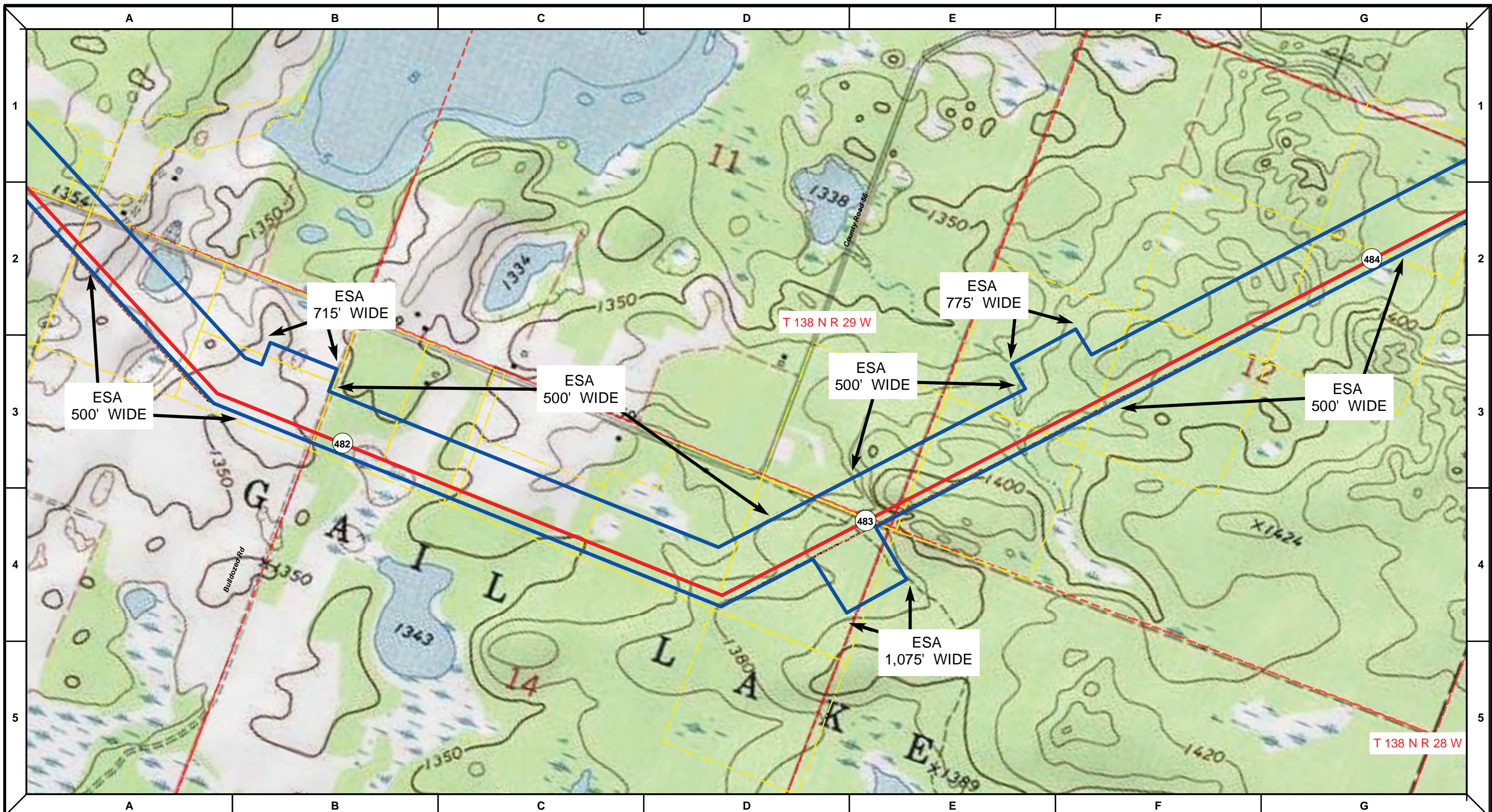
DRAWN	CHECKED	APPROVED	DATE	REV NO.	DESCRIPTION
			1/29/14	2	PUC Update - Revision D-2 Alignment
			12/19/13	1	PUC Update - Revision D Alignment
			10/10/13	0	PUC Submittal

NORTH DAKOTA PIPELINE COMPANY LLC

**PROPOSED SANDPIPER PIPELINE PROJECT**  
 ROUTE MAP  
 Crow Wing County, MN

DRAWN: <b>MLB</b>	CHECKED: <b>--</b>
DATE: <b>Jan 30, 2014</b>	SCALE: <b>AS SHOWN</b>

Spread:7 Map: 77 of 123



Proposed Pipeline - Sandpiper	Milepost - Sandpiper	Tract Boundary
Existing Enbridge Pipelines	Potential Block Valve	Facility Boundary
Foreign Pipes	Environmental Survey Area (ESA)	Previously Sited Facility Boundary
Transmission Lines		Section Lines
SPREAD BREAK		

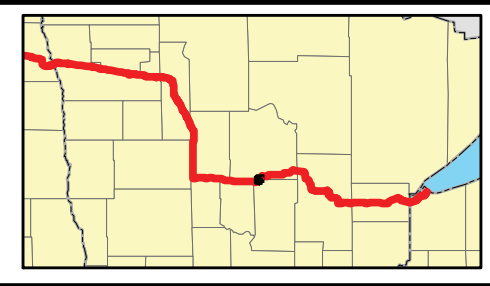
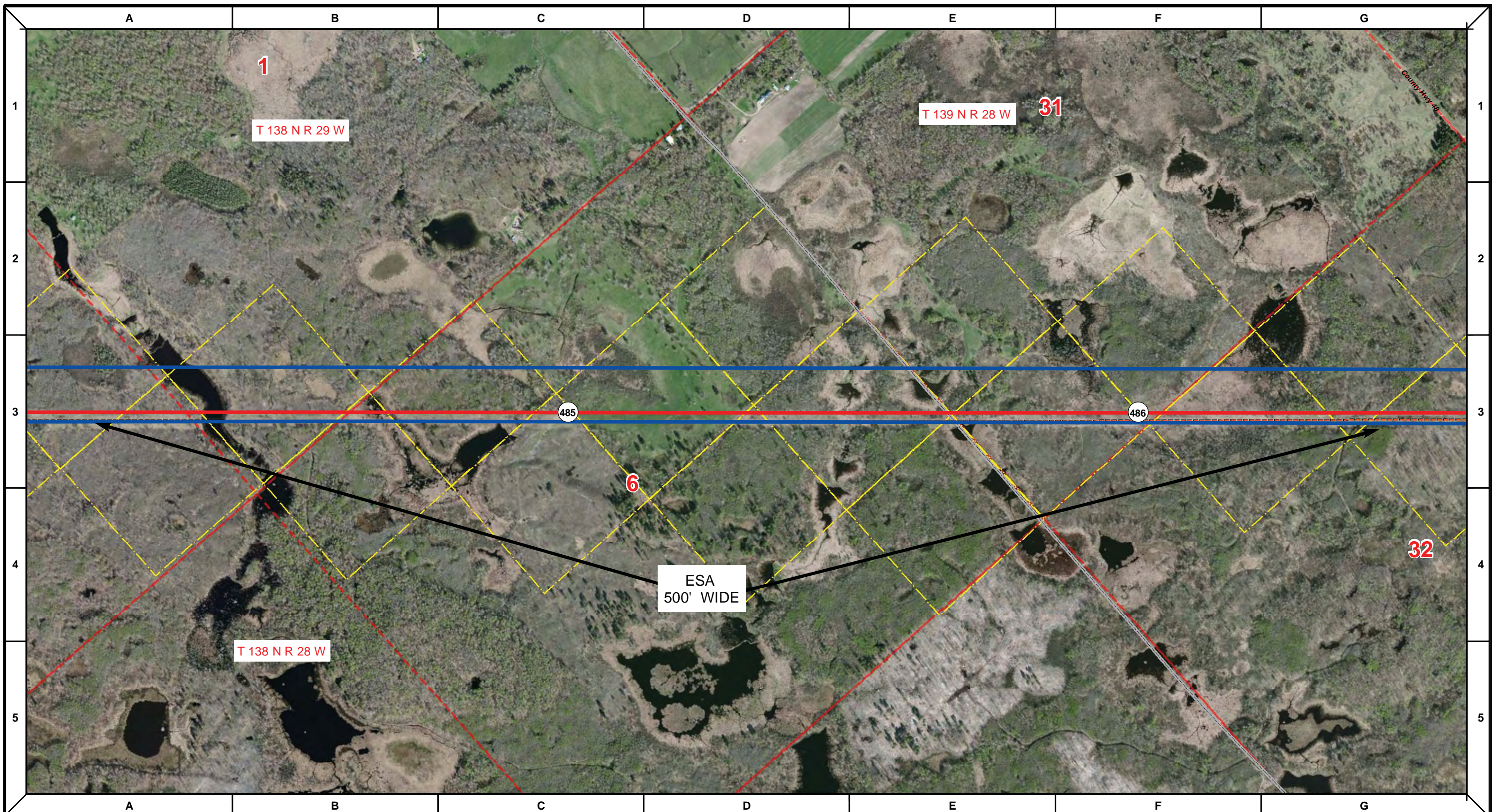
DRAWN	CHECKED	APPROVED	DATE	REV NO.	DESCRIPTION
MLB			1/29/14	2	PUC Update - Revision D-2 Alignment
MLB			12/19/13	1	PUC Update - Revision D Alignment
MLB			10/10/13	0	PUC Submittal

NORTH DAKOTA PIPELINE COMPANY LLC

**PROPOSED SANDPIPER PIPELINE PROJECT**  
 ROUTE MAP  
 Crow Wing County, MN

DRAWN: MLB	CHECKED: --
DATE: Jan 30, 2014	SCALE: AS SHOWN

Spread:7 Map: 77 of 123



Proposed Pipeline - Sandpiper	Milepost - Sandpiper	Tract Boundary
Existing Enbridge Pipelines	Potential Block Valve	Facility Boundary
Foreign Pipes	Environmental Survey Area (ESA)	Previously Sited Facility Boundary
Transmission Lines		Section Lines
SPREAD BREAK		

500 250 0 500 1,000 Feet

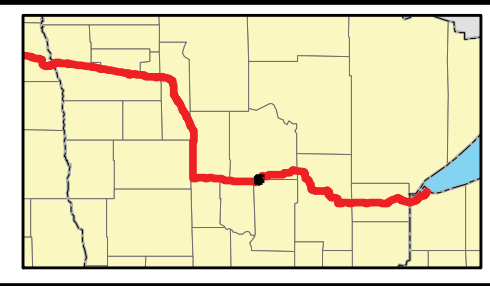
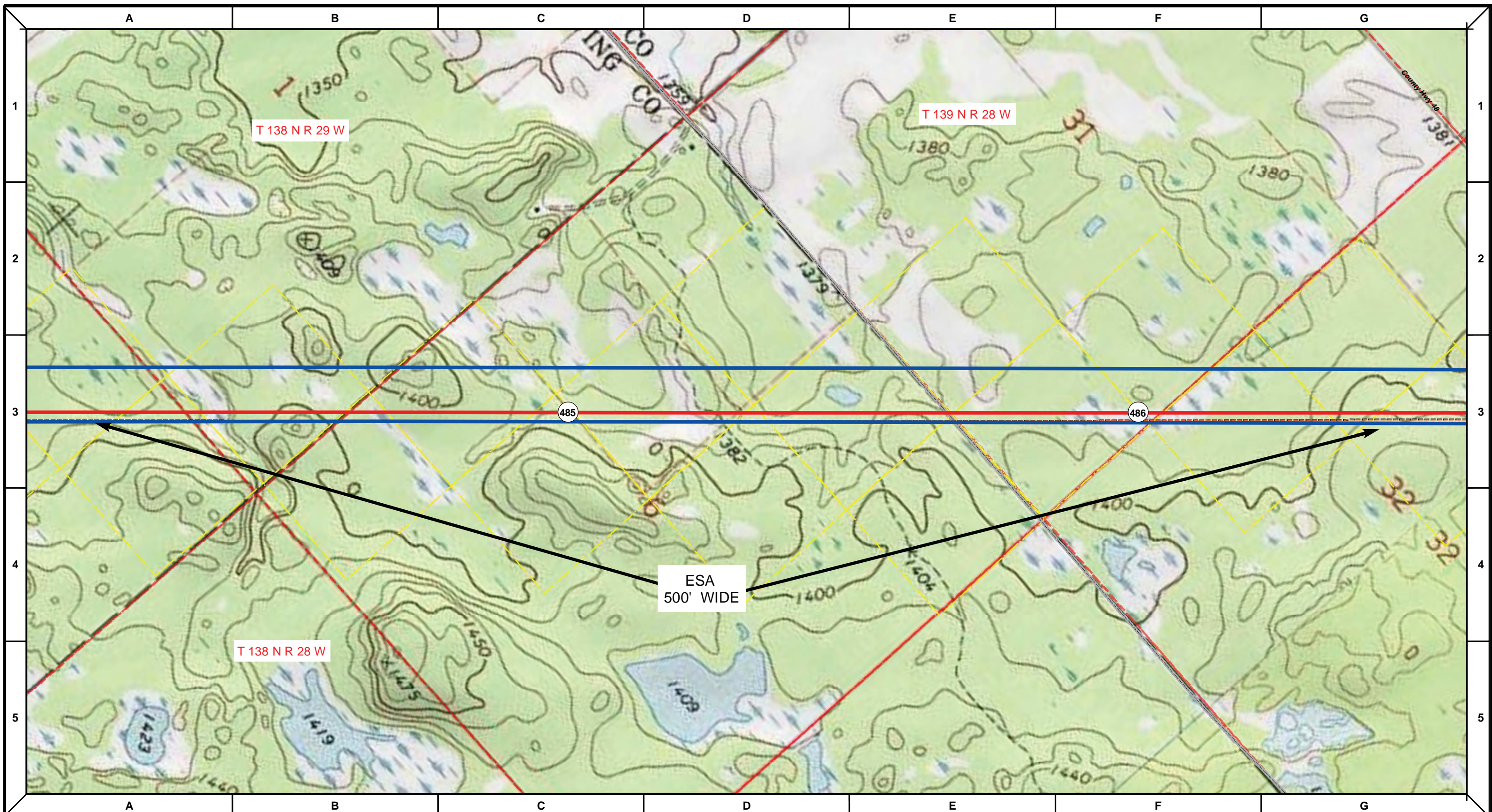
DRAWN	CHECKED	APPROVED	DATE	REV NO.	DESCRIPTION
			1/29/14	2	PUC Update - Revision D-2 Alignment
			12/19/13	1	PUC Update - Revision D Alignment
			10/10/13	0	PUC Submittal

NORTH DAKOTA PIPELINE COMPANY LLC

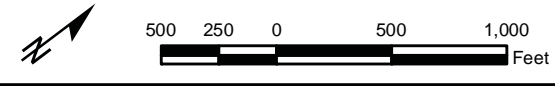
**PROPOSED SANDPIPER PIPELINE PROJECT**  
 ROUTE MAP  
 Crow Wing & Cass County, MN

DRAWN: <i>MLB</i>	CHECKED: --
DATE: Jan 30, 2014	SCALE: AS SHOWN

Spread: 7 Map: 78 of 123



- Proposed Pipeline - Sandpiper
- Existing Enbridge Pipelines
- Foreign Pipes
- Transmission Lines
- SPREAD BREAK
- 1 Milepost - Sandpiper
- ✕ Potential Block Valve
- Environmental Survey Area (ESA)
- Tract Boundary
- Facility Boundary
- Previously Sited Facility Boundary
- Section Lines



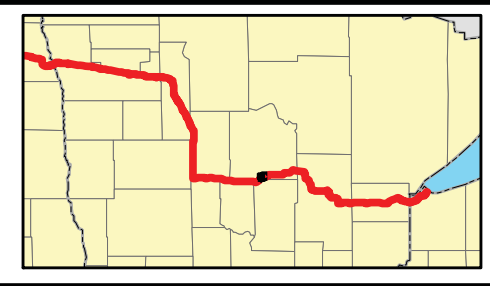
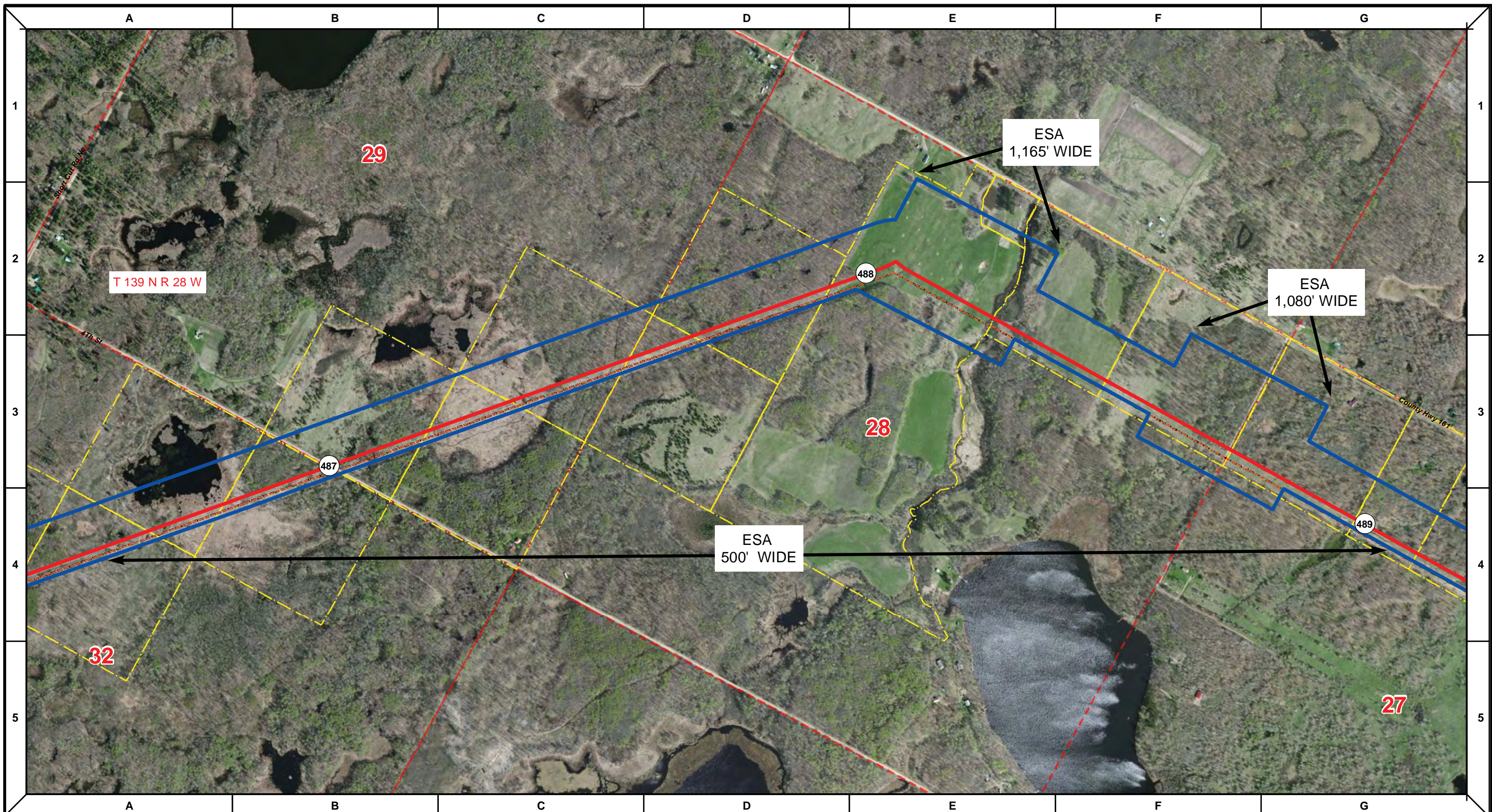
DRAWN	CHECKED	APPROVED	DATE	REV NO.	DESCRIPTION
			1/29/14	2	PUC Update - Revision D-2 Alignment
			12/19/13	1	PUC Update - Revision D Alignment
			10/10/13	0	PUC Submittal

**ENBRIDGE**  
NORTH DAKOTA PIPELINE COMPANY LLC

**PROPOSED SANDPIPER PIPELINE PROJECT ROUTE MAP**  
Crow Wing & Cass County, MN

Spread:7      Map: 78 of 123





Proposed Pipeline - Sandpiper	Milepost - Sandpiper	Tract Boundary
Existing Enbridge Pipelines	Potential Block Valve	Facility Boundary
Foreign Pipes	Environmental Survey Area (ESA)	Previously Sited Facility Boundary
Transmission Lines		Section Lines
SPREAD BREAK		

500 250 0 500 1,000 Feet

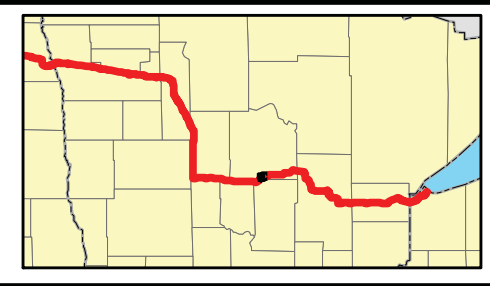
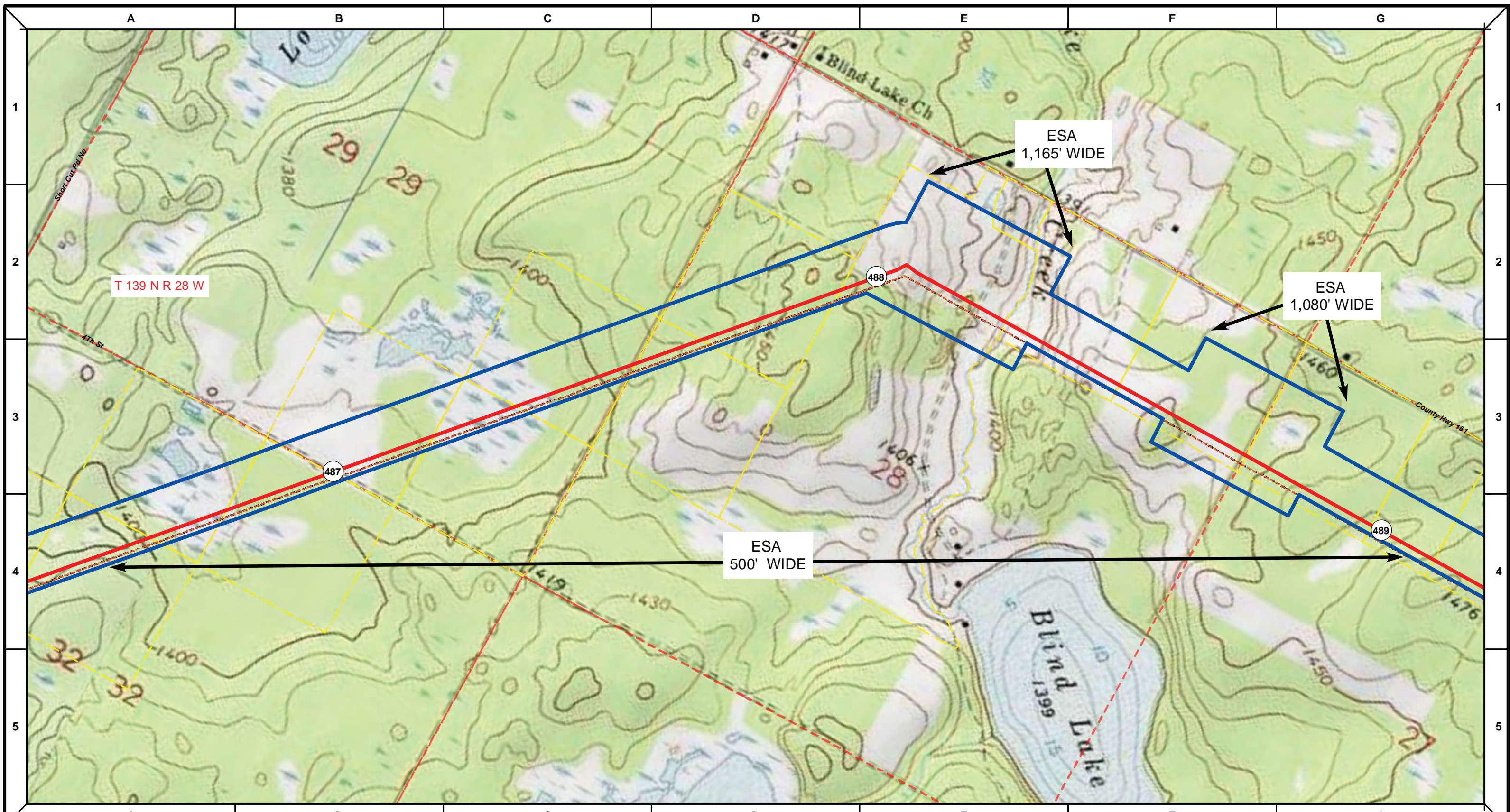
DRAWN	CHECKED	APPROVED	DATE	REV NO.	DESCRIPTION
			1/29/14	2	PUC Update - Revision D-2 Alignment
			12/19/13	1	PUC Update - Revision D Alignment
			10/10/13	0	PUC Submittal

NORTH DAKOTA PIPELINE COMPANY LLC

**PROPOSED SANDPIPER  
 PIPELINE PROJECT  
 ROUTE MAP  
 Cass County, MN**

DRAWN: <b>MLB</b>	CHECKED: <b>--</b>
DATE: <b>Jan 30, 2014</b>	SCALE: <b>AS SHOWN</b>

Spread:7 Map: 79 of 123



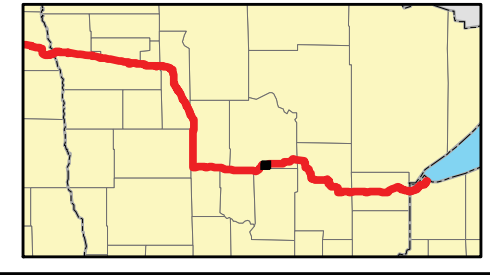
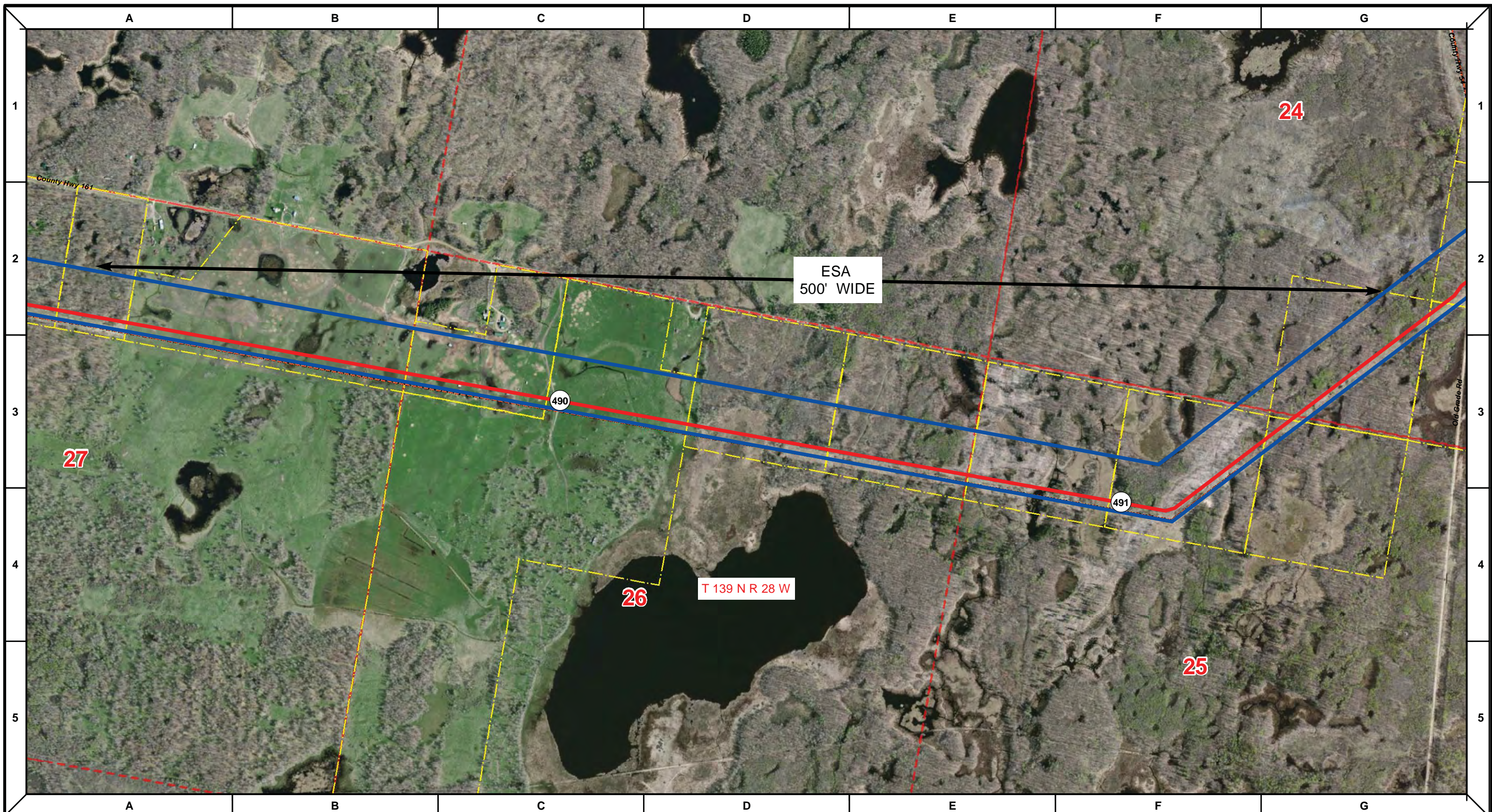
Proposed Pipeline - Sandpiper	Milepost - Sandpiper	Tract Boundary
Existing Enbridge Pipelines	Potential Block Valve	Facility Boundary
Foreign Pipes	Environmental Survey Area (ESA)	Previously Sited Facility Boundary
Transmission Lines		Section Lines
SPREAD BREAK		

DRAWN	CHECKED	APPROVED	DATE	REV NO.	DESCRIPTION
			1/29/14	2	PUC Update - Revision D-2 Alignment
			12/19/13	1	PUC Update - Revision D Alignment
			10/10/13	0	PUC Submittal

NORTH DAKOTA PIPELINE COMPANY LLC  
**PROPOSED SANDPIPER PIPELINE PROJECT**  
**ROUTE MAP**  
**Cass County, MN**

DRAWN: <b>MLB</b>	CHECKED: <b>--</b>
DATE: <b>Jan 30, 2014</b>	SCALE: <b>AS SHOWN</b>

Spread:7      Map: 79 of 123



Proposed Pipeline - Sandpiper	Milepost - Sandpiper	Tract Boundary
Existing Enbridge Pipelines	Potential Block Valve	Facility Boundary
Foreign Pipes	Environmental Survey Area (ESA)	Previously Sited Facility Boundary
Transmission Lines		Section Lines
SPREAD BREAK		

500 250 0 500 1,000 Feet

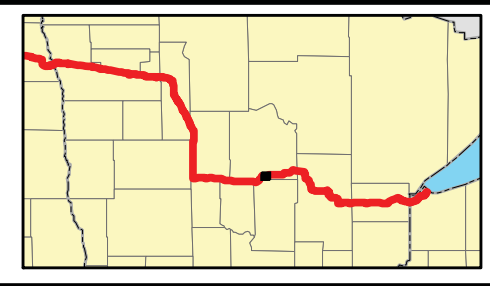
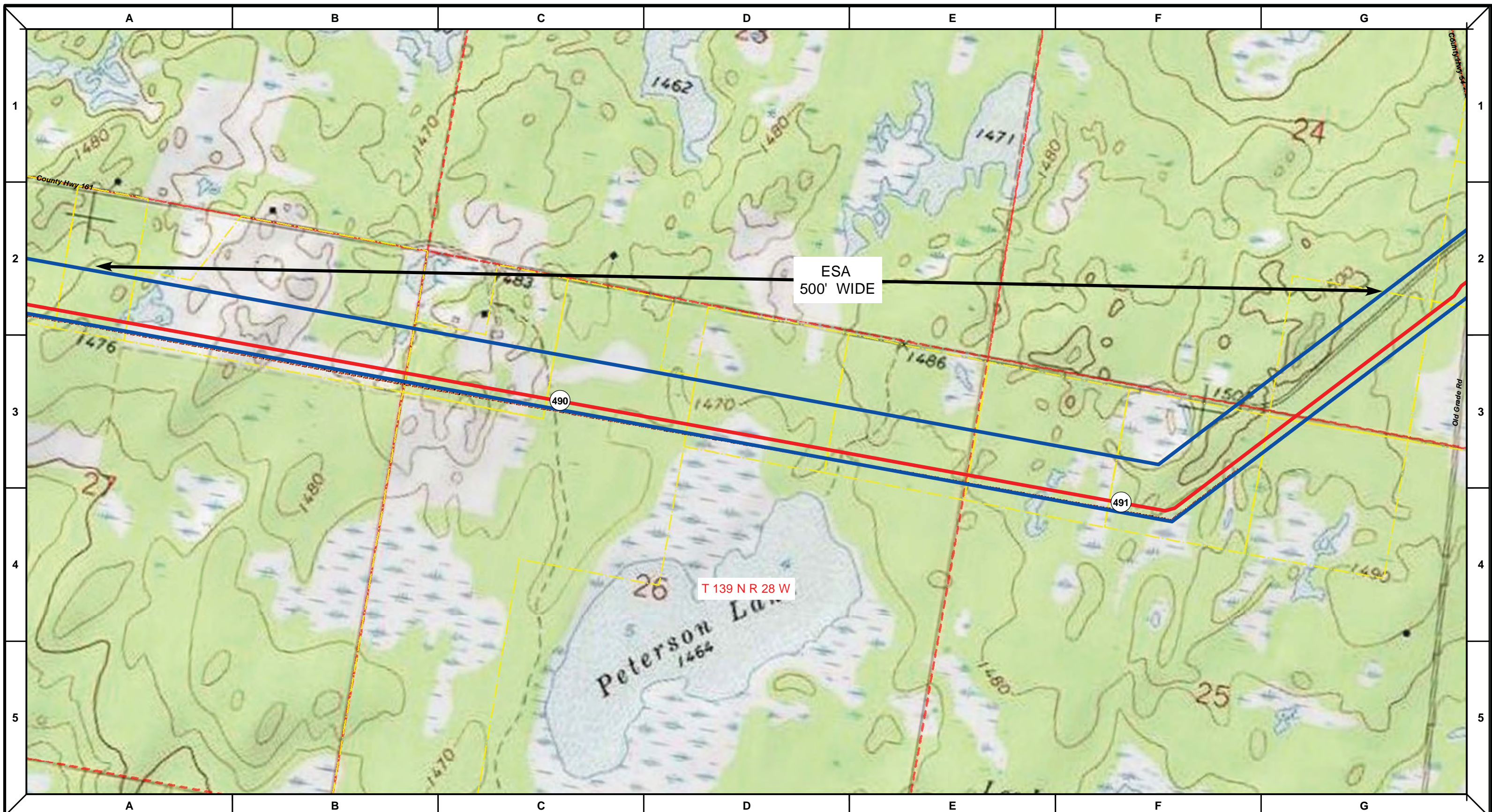
DRAWN	CHECKED	APPROVED	DATE	REV NO.	DESCRIPTION
			1/29/14	2	PUC Update - Revision D-2 Alignment
			12/19/13	1	PUC Update - Revision D Alignment
			10/10/13	0	PUC Submittal

NORTH DAKOTA PIPELINE COMPANY LLC

**PROPOSED SANDPIPER  
 PIPELINE PROJECT  
 ROUTE MAP  
 Cass County, MN**

DRAWN: <b>MLB</b>	CHECKED: <b>--</b>
DATE: <b>Jan 30, 2014</b>	SCALE: <b>AS SHOWN</b>

Spread:7 Map: 80 of 123



Proposed Pipeline - Sandpiper	Milepost - Sandpiper	Tract Boundary
Existing Enbridge Pipelines	Potential Block Valve	Facility Boundary
Foreign Pipes	Environmental Survey Area (ESA)	Previously Sited Facility Boundary
Transmission Lines		Section Lines
SPREAD BREAK		

500 250 0 500 1,000 Feet

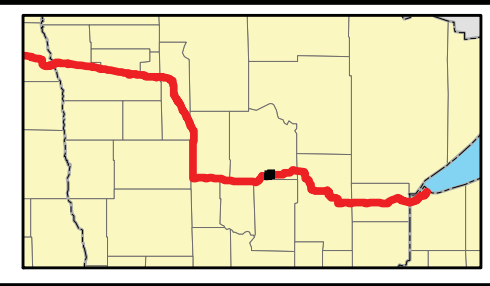
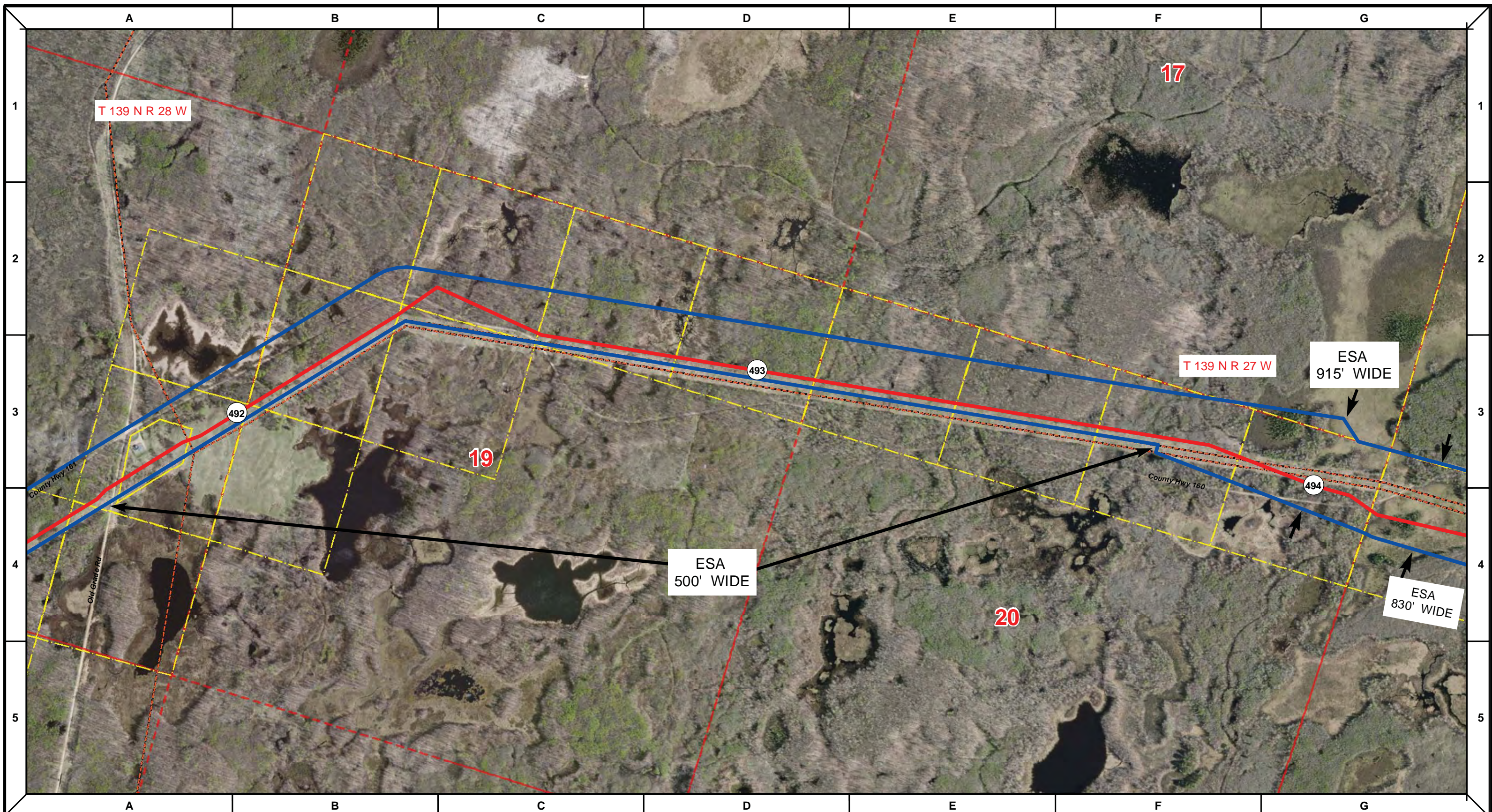
DRAWN	CHECKED	APPROVED	DATE	REV NO.	DESCRIPTION
			1/29/14	2	PUC Update - Revision D-2 Alignment
			12/19/13	1	PUC Update - Revision D Alignment
			10/10/13	0	PUC Submittal

NORTH DAKOTA PIPELINE COMPANY LLC

**PROPOSED SANDPIPER PIPELINE PROJECT**  
 ROUTE MAP  
 Cass County, MN

DRAWN: <b>MLB</b>	CHECKED: <b>--</b>
DATE: <b>Jan 30, 2014</b>	SCALE: <b>AS SHOWN</b>

Spread:7 Map: 80 of 123



Proposed Pipeline - Sandpiper	Milepost - Sandpiper	Tract Boundary
Existing Enbridge Pipelines	Potential Block Valve	Facility Boundary
Foreign Pipes	Environmental Survey Area (ESA)	Previously Sited Facility Boundary
Transmission Lines		Section Lines
SPREAD BREAK		

500 250 0 500 1,000 Feet

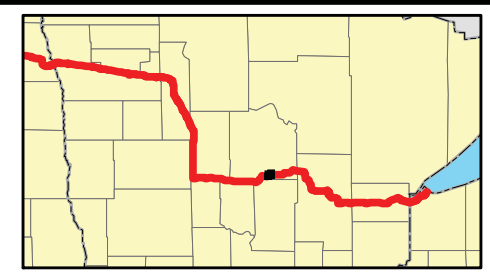
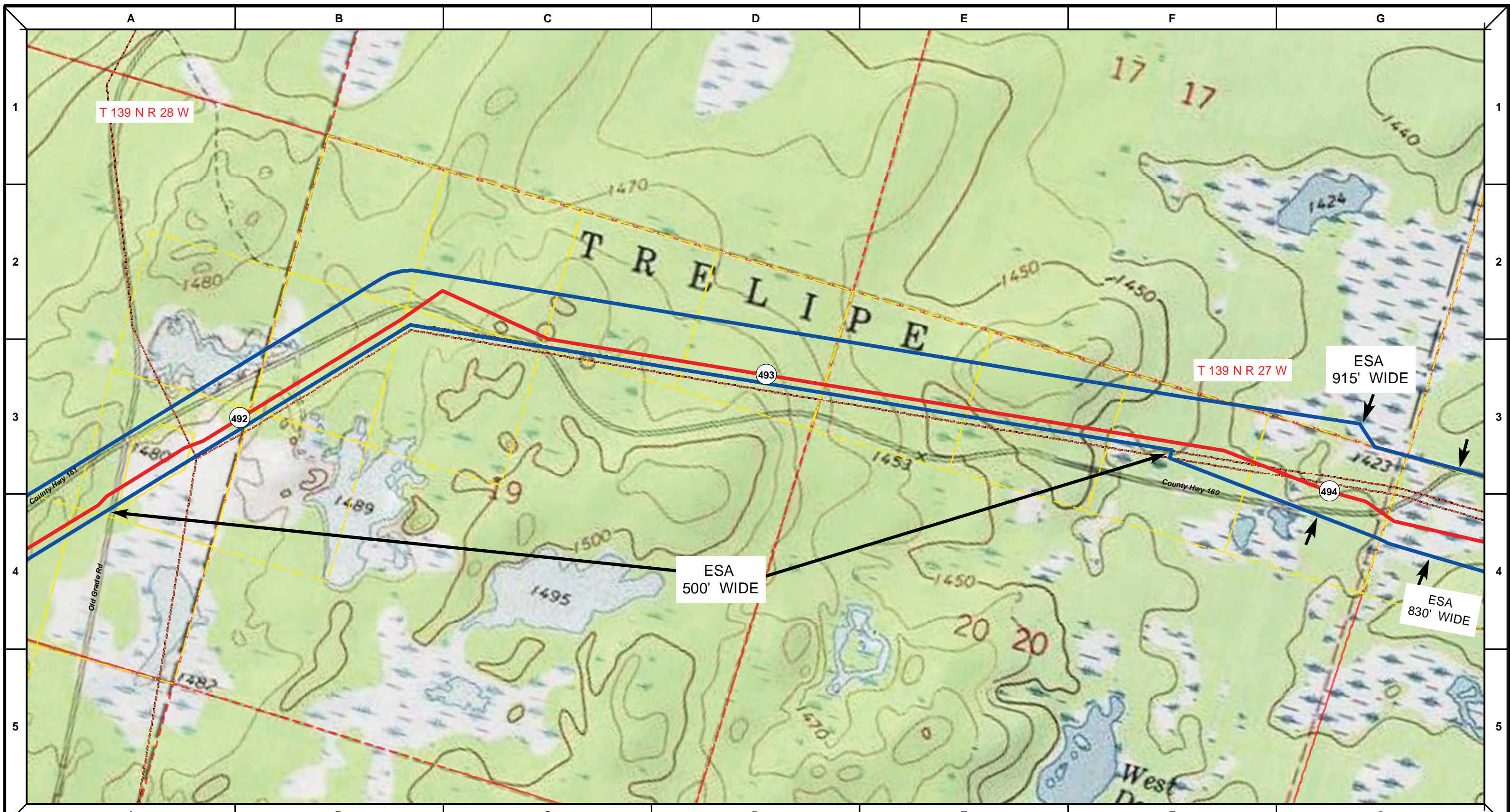
DRAWN	CHECKED	APPROVED	DATE	REV NO.	DESCRIPTION
			1/29/14	2	PUC Update - Revision D-2 Alignment
			12/19/13	1	PUC Update - Revision D Alignment
			10/10/13	0	PUC Submittal

NORTH DAKOTA PIPELINE COMPANY LLC

**PROPOSED SANDPIPER PIPELINE PROJECT**  
 ROUTE MAP  
 Cass County, MN

DRAWN: <b>MLB</b>	CHECKED: <b>--</b>
DATE: <b>Jan 30, 2014</b>	SCALE: <b>AS SHOWN</b>

Spread:7 Map: 81 of 123



Proposed Pipeline - Sandpiper	Milepost - Sandpiper	Tract Boundary
Existing Enbridge Pipelines	Potential Block Valve	Facility Boundary
Foreign Pipes	Environmental Survey Area (ESA)	Previously Sited Facility Boundary
Transmission Lines		Section Lines
SPREAD BREAK		

500 250 0 500 1,000 Feet

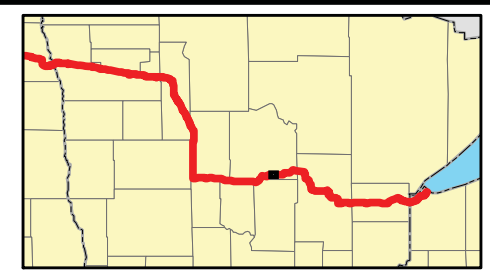
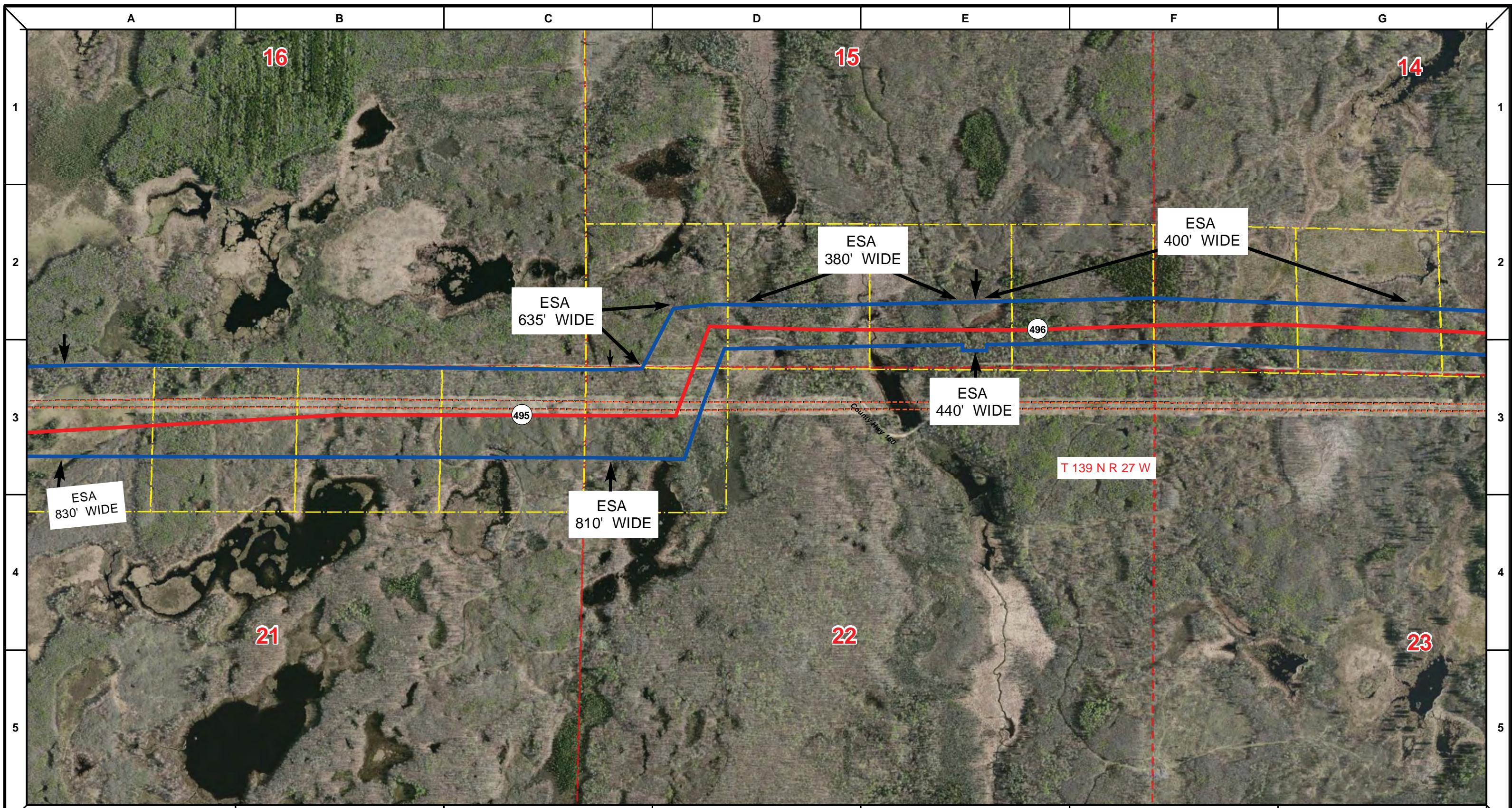
DRAWN	CHECKED	APPROVED	DATE	REV NO.	DESCRIPTION
			1/29/14	2	PUC Update - Revision D-2 Alignment
			12/19/13	1	PUC Update - Revision D Alignment
			10/10/13	0	PUC Submittal

NORTH DAKOTA PIPELINE COMPANY LLC

**PROPOSED SANDPIPER PIPELINE PROJECT**  
 ROUTE MAP  
 Cass County, MN

DRAWN: <b>MLB</b>	CHECKED: <b>--</b>
DATE: <b>Jan 30, 2014</b>	SCALE: <b>AS SHOWN</b>

Spread:7      Map: 81 of 123



- Proposed Pipeline - Sandpiper
- Existing Enbridge Pipelines
- Foreign Pipes
- - - Transmission Lines
- SPREAD BREAK
- 1 Milepost - Sandpiper
- ✕ Potential Block Valve
- Environmental Survey Area (ESA)
- Tract Boundary
- Facility Boundary
- Previously Sited Facility Boundary
- Section Lines

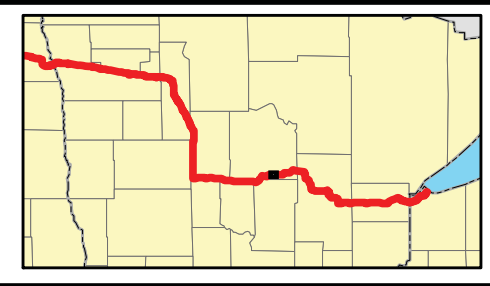
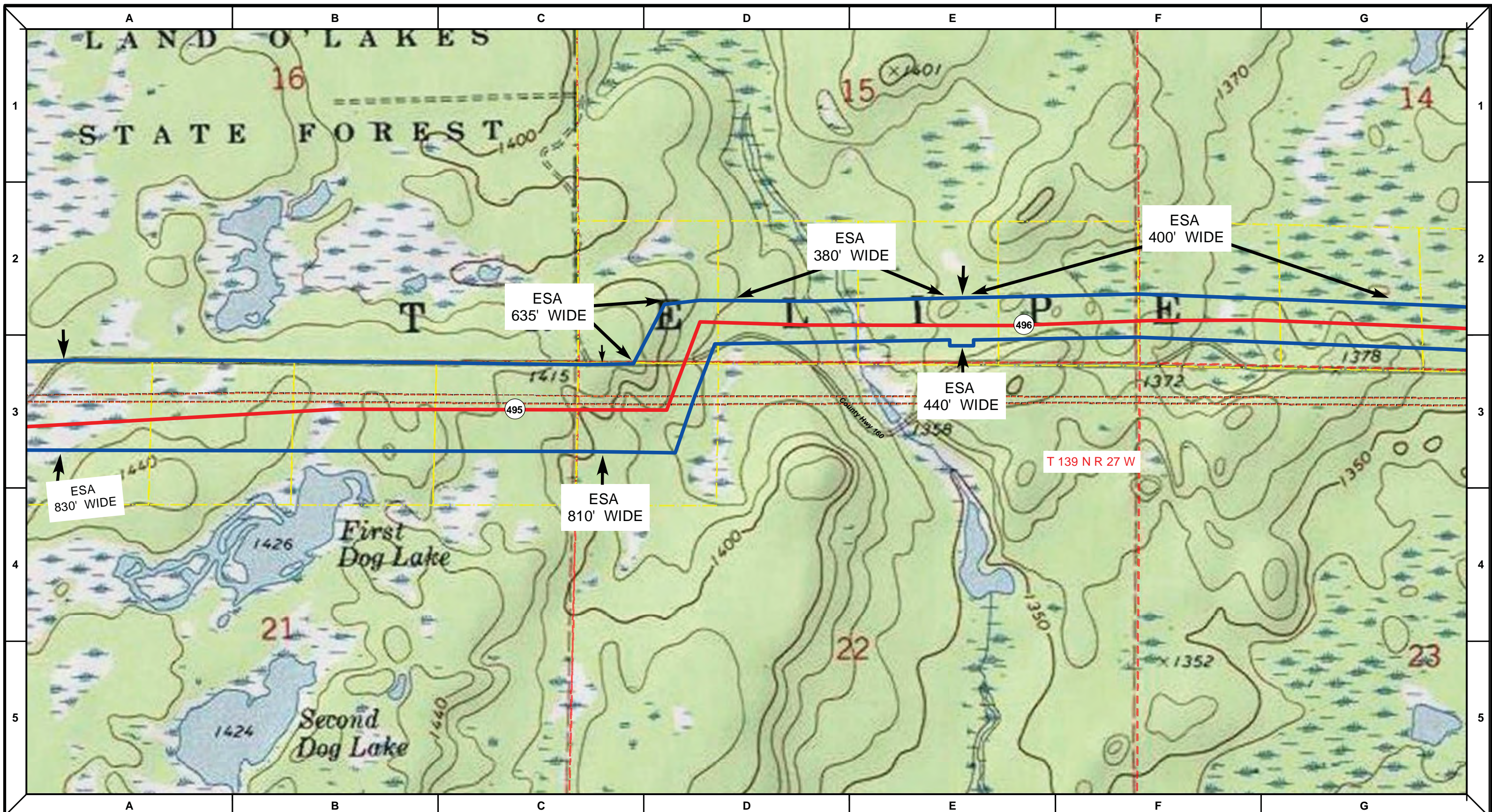
DRAWN	CHECKED	APPROVED	DATE	REV NO.	DESCRIPTION
			1/29/14	2	PUC Update - Revision D-2 Alignment
			12/19/13	1	PUC Update - Revision D Alignment
			10/10/13	0	PUC Submittal

**ENBRIDGE**  
NORTH DAKOTA PIPELINE COMPANY LLC

**PROPOSED SANDPIPER  
PIPELINE PROJECT  
ROUTE MAP  
Cass County, MN**

DRAWN: MLB    CHECKED: --  
DATE: Jan 30, 2014    SCALE: AS SHOWN

**Spread:7      Map: 82 of 123**



Proposed Pipeline - Sandpiper	Milepost - Sandpiper	Tract Boundary
Existing Enbridge Pipelines	Potential Block Valve	Facility Boundary
Foreign Pipes	Environmental Survey Area (ESA)	Previously Sited Facility Boundary
Transmission Lines		Section Lines
SPREAD BREAK		

DRAWN	CHECKED	APPROVED	DATE	REV NO.	DESCRIPTION
			1/29/14	2	PUC Update - Revision D-2 Alignment
			12/19/13	1	PUC Update - Revision D Alignment
			10/10/13	0	PUC Submittal

NORTH DAKOTA PIPELINE COMPANY LLC  
**PROPOSED SANDPIPER PIPELINE PROJECT**  
 ROUTE MAP  
 Cass County, MN

DRAWN: <b>MLB</b>	CHECKED: <b>--</b>
DATE: <b>Jan 30, 2014</b>	SCALE: <b>AS SHOWN</b>

Spread:7 Map: 82 of 123