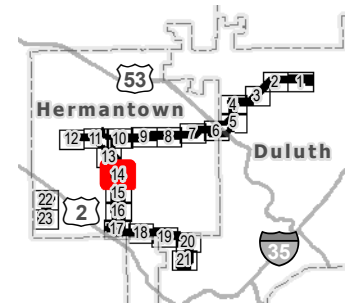
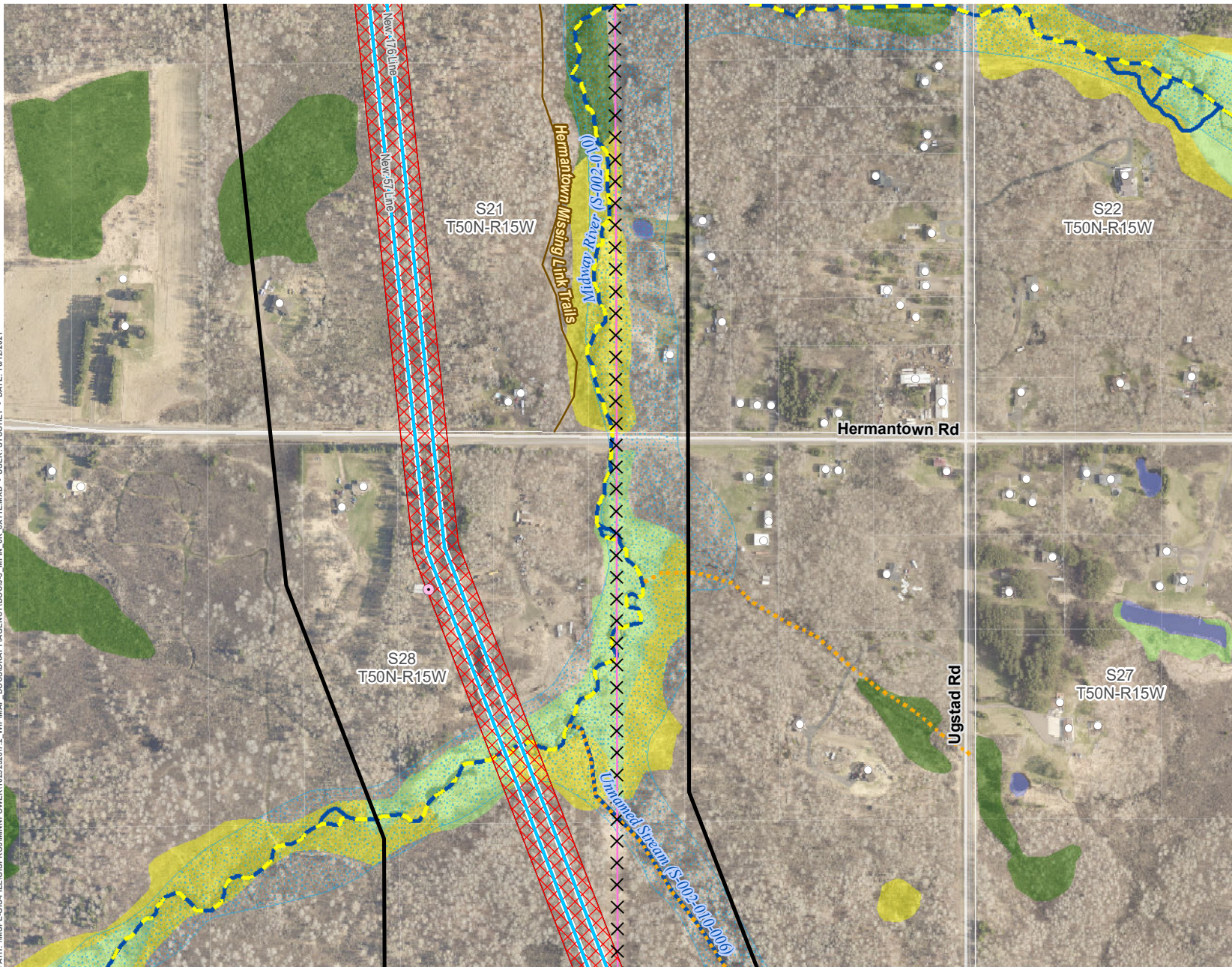


PATH: \\MSPE-GIS-FILES\GIS\PROJECTS\MINNPOWER\12523207_2_WIP\MAP_DCS\DRIFT\AGENCY\DCDC\3_MPH_6K_6X11\MXD - USER: STUORNEY - DATE: 10/12/2021



- LEGEND**
- Proposed Route
 - Approximate ROW
 - Approximate New Impact Area
 - Project 115 kV Transmission Line (Single Circuit)
 - Removed Transmission Line (Realigned)
 - Existing Structure
 - Structure in ROW
 - Existing Transmission Line
 - Existing/Proposed Trail
 - Designated Trout Stream
 - Protected Tributary to Designated Trout Stream
 - PWI Watercourse
 - FEMA Floodplain
- National Wetlands Inventory**
- Freshwater Emergent Wetland
 - Freshwater Forested Wetland
 - Freshwater Shrub Wetland
 - Freshwater Pond; Lake; Riverine

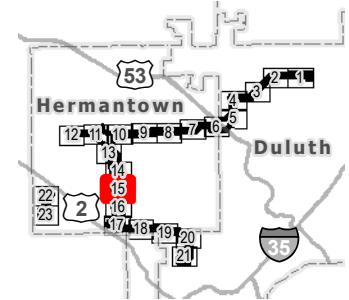
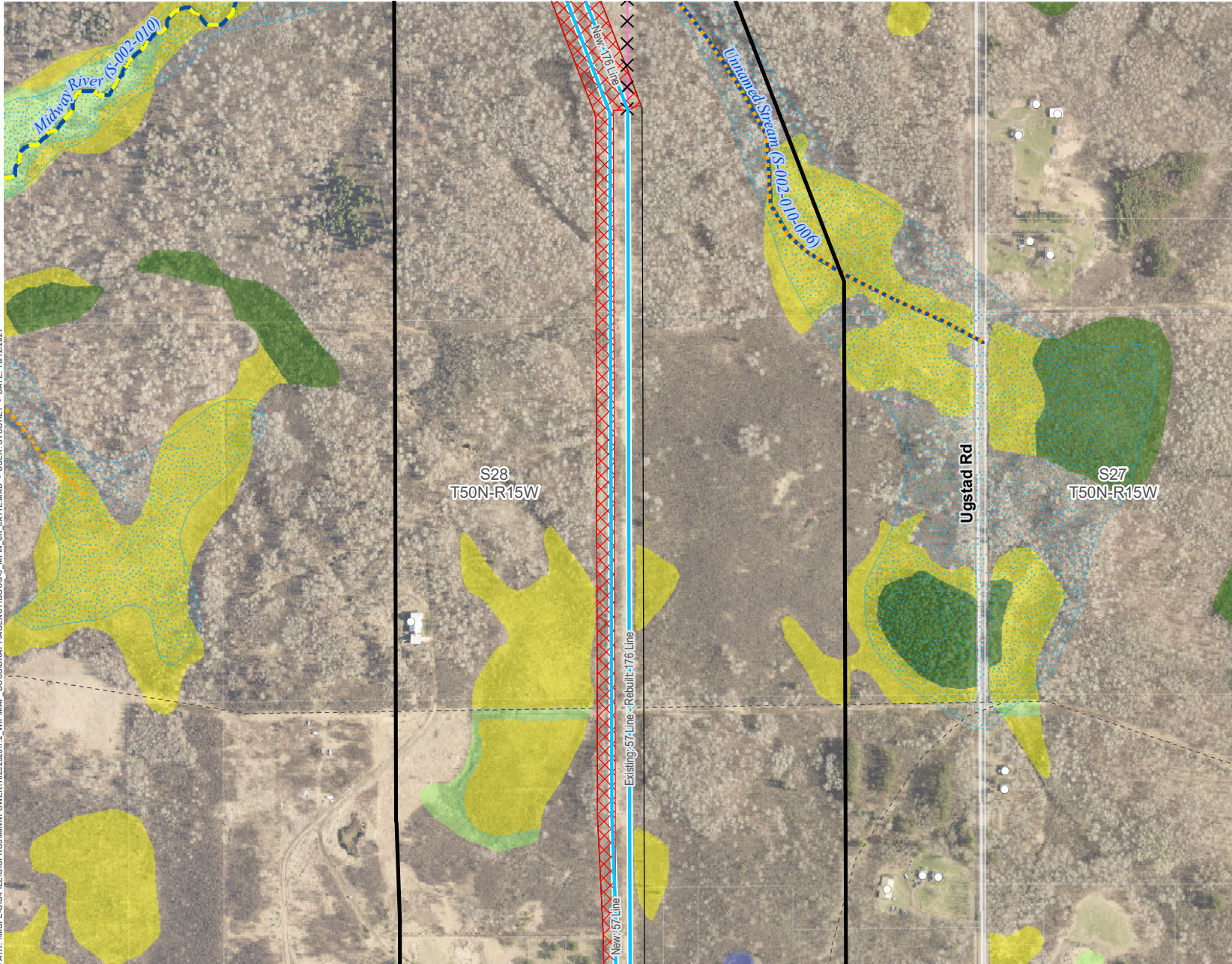
*Note: Removals shown for significant realignments only. Line removals associated with the reconstruction of transmission lines, including minor centerline shifts are not indicated for clarity purposes. See Proposed System Overview for further definition on final line configurations and designations.



**PROJECT DETAIL - HILLTOP TO HAINES ROAD
DULUTH LOOP RELIABILITY PROJECT**

APPENDIX J-3: PAGE 14 OF 23

PATH: \\MSPE-GIS-FILES\GIS\PROJECTS\MINPOWER\102522017_2_WIP\MAP - DOCS\DRIFT\AGENCY\DOCU-3_MPN_6K_0X1L\MXD - USER: STUOHLEY - DATE: 10/12/2021



LEGEND

- Proposed Route
- Approximate ROW
- Approximate New Impact Area
- Project 115 kV Transmission Line (Single Circuit)
- Removed Transmission Line (Realigned)
- Existing Structure
- Existing Transmission Line
- Existing Pipeline
- Existing/Proposed Trail
- Designated Trout Stream
- Protected Tributary to Designated Trout Stream
- PWI Watercourse
- FEMA Floodplain
- National Wetlands Inventory**
 - Freshwater Emergent Wetland
 - Freshwater Forested Wetland
 - Freshwater Shrub Wetland
 - Freshwater Pond; Lake; Riverine

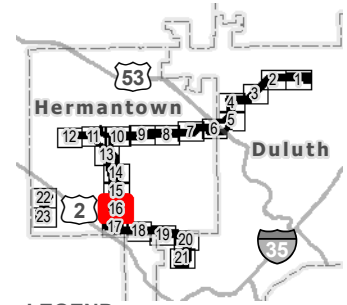
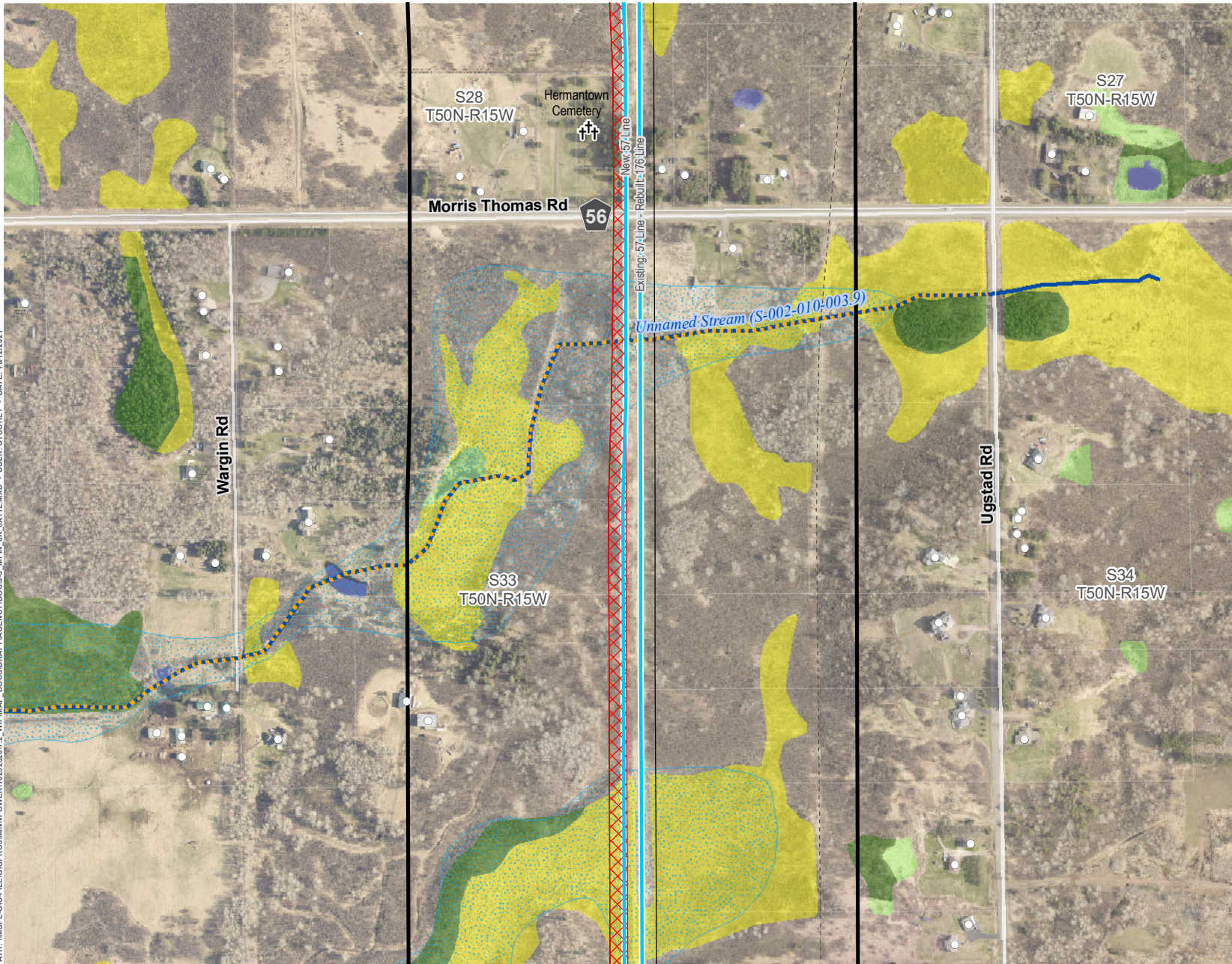
*Note: Removals shown for significant realignments only. Line removals associated with the reconstruction of transmission lines, including minor centerline shifts are not indicated for clarity purposes. See Proposed System Overview for further definition on final line configurations and designations.



**PROJECT DETAIL - HILLTOP TO HAINES ROAD
DULUTH LOOP RELIABILITY PROJECT**

APPENDIX J-3: PAGE 15 OF 23

PATH: \\MSPE-GIS-FILE\GIS\PROJECTS\MINNPOWER\1025232017_2_WIP\MAP DOCS\DRIFT\AGENCY\DOC\J-3_MPN_6K_0X1L.MXD - USER: STUOHEY - DATE: 10/12/2021



LEGEND

- Proposed Route
- Approximate ROW
- Approximate New Impact Area
- Project 115 kV Transmission Line (Single Circuit)
- Existing Structure
- Cemetery
- Existing Transmission Line
- Existing Pipeline
- Existing/Proposed Trail
- Protected Tributary to Designated Trout Stream
- PWI Watercourse
- FEMA Floodplain
- National Wetlands Inventory**
- Freshwater Emergent Wetland
- Freshwater Forested Wetland
- Freshwater Shrub Wetland
- Freshwater Pond; Lake; Riverine

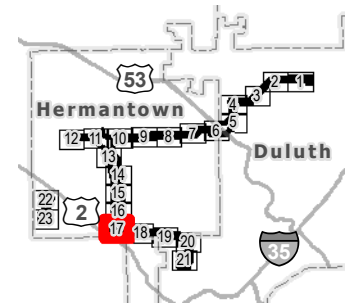
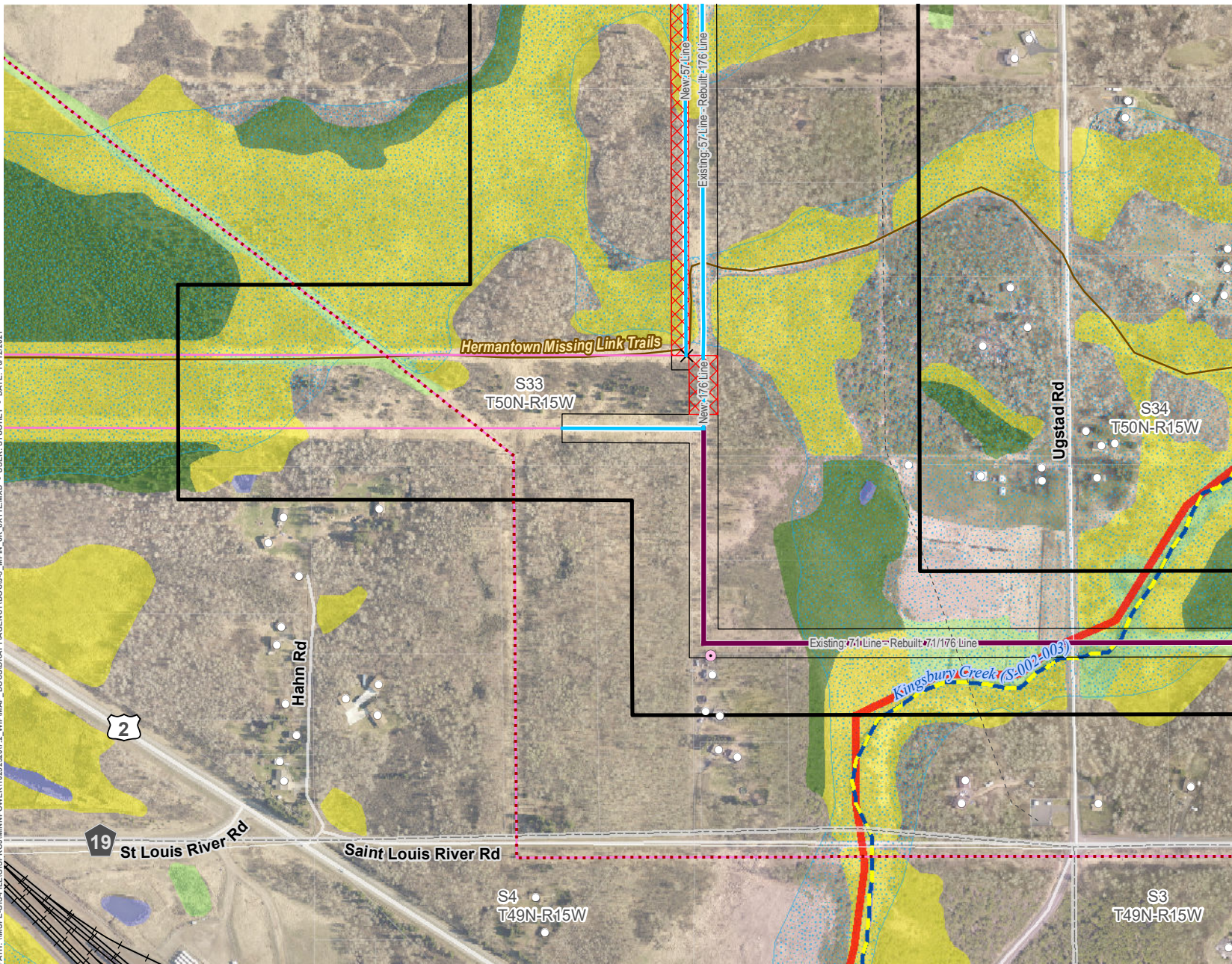
*Note: Removals shown for significant realignments only. Line removals associated with the reconstruction of transmission lines, including minor centerline shifts are not indicated for clarity purposes. See Proposed System Overview for further definition on final line configurations and designations.



**PROJECT DETAIL - HILLTOP TO HAINES ROAD
DULUTH LOOP RELIABILITY PROJECT**

APPENDIX J-3: PAGE 16 OF 23

PATH: \\MSPE-GIS-FILE\GIS\PROJECT\MINNPOWER\102522017-2_WIP\MAP - DCS\DR\RAFT\AGENCY\DOC\J-3_MPN_6K_03\11.MXD - USER: STUOHNEY - DATE: 10/12/2021



LEGEND

- Proposed Route
 - Approximate ROW
 - Approximate New Impact Area
 - Project 115 kV Transmission Line (Single Circuit)
 - Project 115 kV Transmission Line (Double Circuit)
 - Removed Transmission Line (Realigned)
 - x x Thermal Upgrades
 - o Existing Structure
 - o Structure in ROW
 - Existing Transmission Line
 - Existing Pipeline
 - Railroad
 - Existing/Proposed Trail
 - Impaired Water
 - Designated Trout Stream
 - PWI Watercourse
 - FEMA Floodplain
- National Wetlands Inventory**
- Freshwater Emergent Wetland
 - Freshwater Forested Wetland
 - Freshwater Shrub Wetland
 - Freshwater Pond; Lake; Riverine
- *Note: Removals shown for significant realignments only. Line removals associated with the reconstruction of transmission lines, including minor centerline shifts are not indicated for clarity purposes. See Proposed System Overview for further definition on final line configurations and designations.

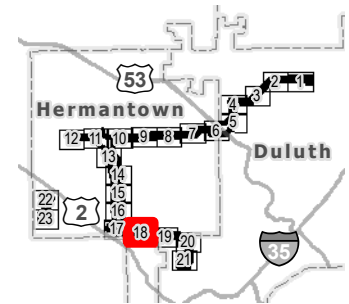
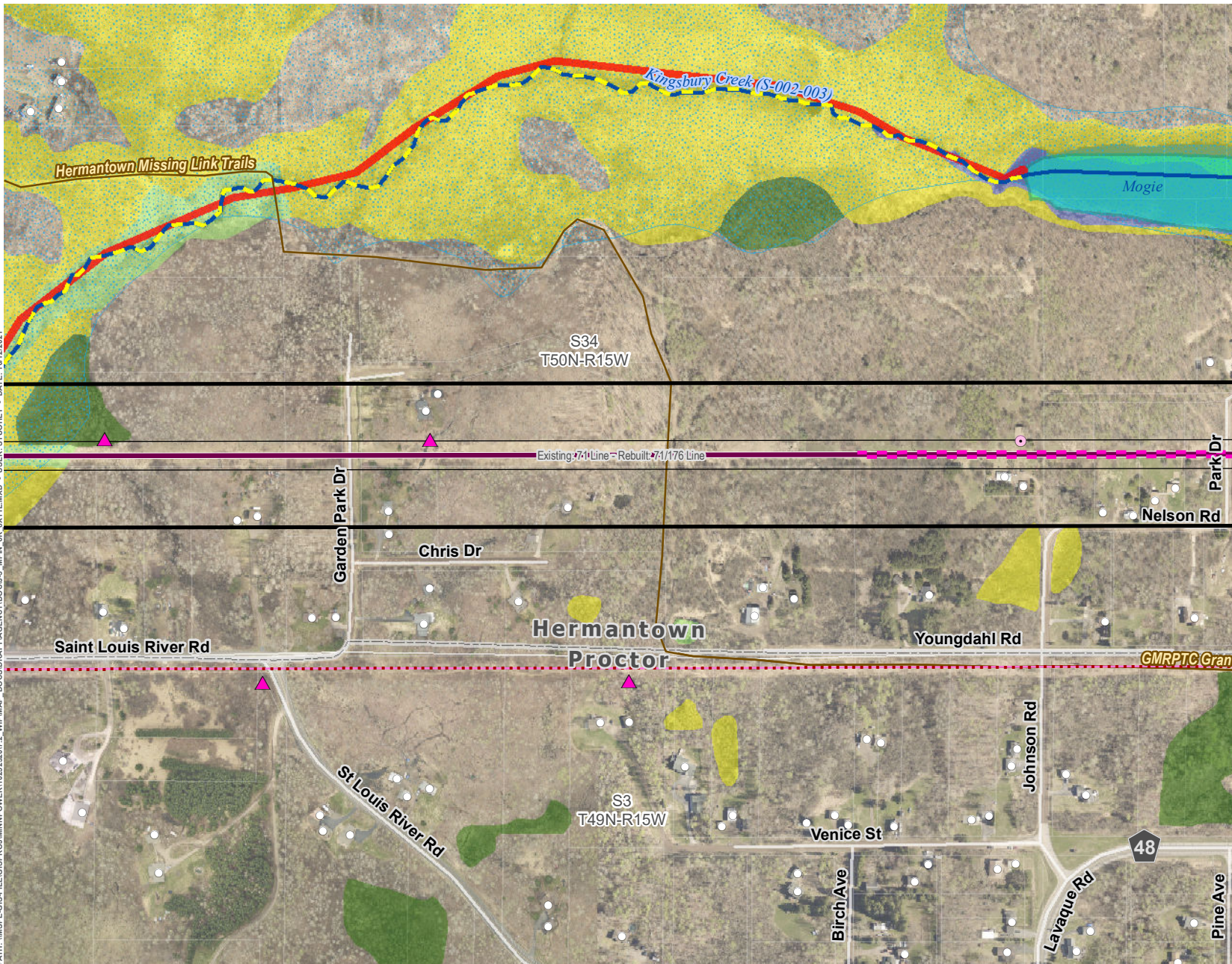


**PROJECT DETAIL - HILLTOP TO HAINES ROAD
DULUTH LOOP RELIABILITY PROJECT**

APPENDIX J-3: PAGE 17 OF 23



PATH: \\MSPE-GIS-FILE\GIS\PROJECT\MINNPOWER\1025232017_2_WIP\MAP - DOCS\DATA\AGENCY\DOC\GJ_3_MPN_6K_8X11L.MXD - USER: STUOHNEY - DATE: 10/12/2021



LEGEND

- Proposed Route
- Approximate ROW
- Project 115 kV Transmission Line (Double Circuit)
- Thermal Upgrades
- Proposed Line Marking
- Existing Structure
- Structure in ROW
- Existing Transmission Line
- PWI Basin
- Existing/Proposed Trail
- Impaired Water
- Designated Trout Stream
- Unmapped Tributary
- PWI Watercourse
- FEMA Floodplain
- National Wetlands Inventory**
 - Freshwater Emergent Wetland
 - Freshwater Forested Wetland
 - Freshwater Shrub Wetland
 - Freshwater Pond; Lake; Riverine

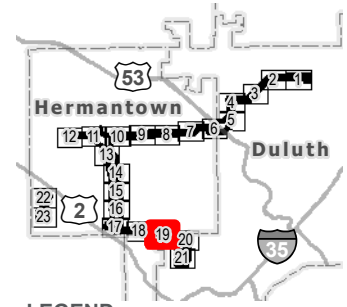
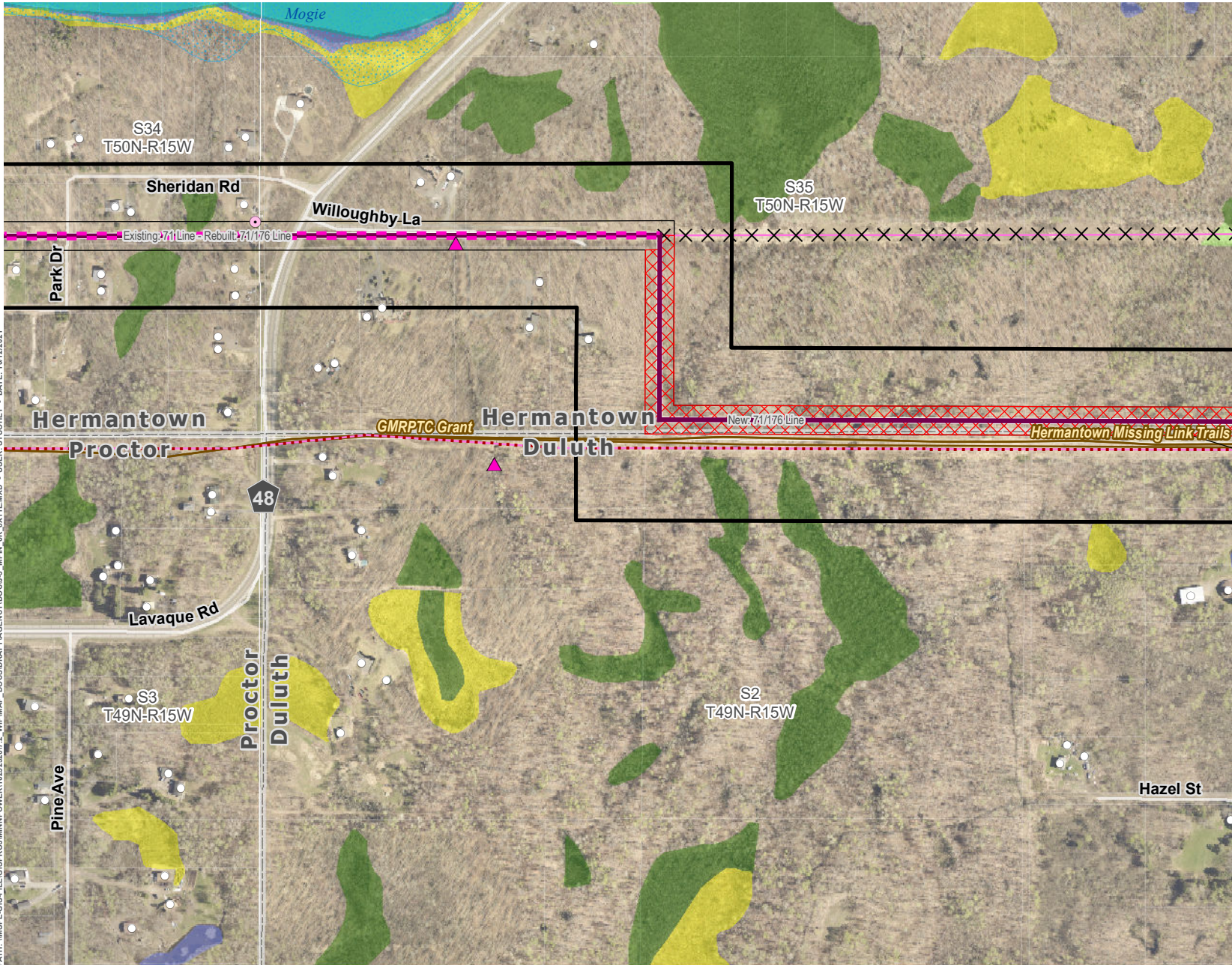
*Note: Removals shown for significant realignments only. Line removals associated with the reconstruction of transmission lines, including minor centerline shifts are not indicated for clarity purposes. See Proposed System Overview for further definition on final line configurations and designations.



**PROJECT DETAIL - HILLTOP TO HAINES ROAD
DULUTH LOOP RELIABILITY PROJECT**

APPENDIX J-3: PAGE 18 OF 23

PATH: \\MSPE-GIS-FILE\GIS\PROJECTS\MINNPOWER\102523207\2_WIP\MAP - DOCS\DRIFT\AGENCY\DOCS\J_3_MPN_6K_3X1\1.MXD - USER: STUOHNEY - DATE: 10/12/2021



- LEGEND**
- Proposed Route
 - Approximate ROW
 - Approximate New Impact Area
 - Project 115 kV Transmission Line (Double Circuit)
 - Existing Transmission Line (Realigned)
 - Removed Transmission Line (Realigned)
 - Thermal Upgrades
 - Proposed Line Marking
 - Existing Structure
 - Structure in ROW
 - Existing Transmission Line
 - PWI Basin
 - Existing/Proposed Trail
 - Unmapped Tributary
 - FEMA Floodplain
- National Wetlands Inventory**
- Freshwater Emergent Wetland
 - Freshwater Forested Wetland
 - Freshwater Shrub Wetland
 - Freshwater Pond; Lake; Riverine

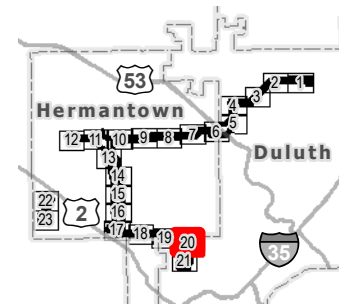
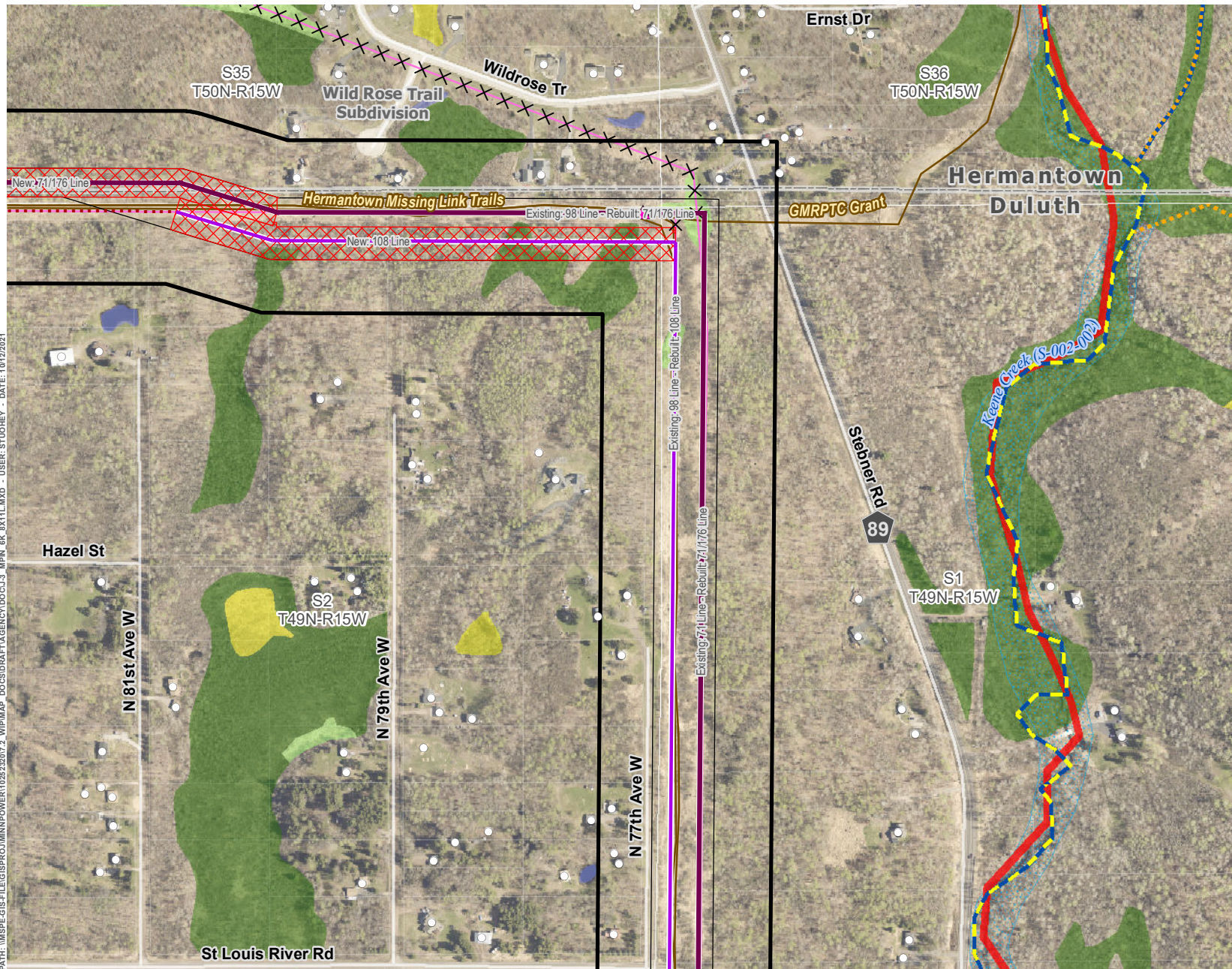
*Note: Removals shown for significant realignments only. Line removals associated with the reconstruction of transmission lines, including minor centerline shifts are not indicated for clarity purposes. See Proposed System Overview for further definition on final line configurations and designations.



**PROJECT DETAIL - HILLTOP TO HAINES ROAD
DULUTH LOOP RELIABILITY PROJECT**

APPENDIX J-3: PAGE 19 OF 23

PATH: \\MSPE-GIS-FILES\GIS\PROJECTS\MINNPOWER\102523207_2_WIP\MAP - DCS\DRIFT\AGENCY\DOC\J_3_MPH_6K_0X1\1.MXD - USER: STUDIOHEY - DATE: 10/12/2021



LEGEND

- Proposed Route
- Approximate ROW
- Approximate New Impact Area
- Project 115 kV Transmission Line (Double Circuit)
- Project 230 kV Transmission Line (Single Circuit)
- Removed Transmission Line (Realigned)
- Thermal Upgrades
- Existing Structure
- Existing Transmission Line
- Existing/Proposed Trail
- Impaired Water
- Designated Trout Stream
- Protected Tributary to Designated Trout Stream
- Unmapped Tributary
- PWI Watercourse
- FEMA Floodplain
- National Wetlands Inventory**
- Freshwater Emergent Wetland
- Freshwater Forested Wetland
- Freshwater Shrub Wetland
- Freshwater Pond; Lake; Riverine

*Note: Removals shown for significant realignments only. Line removals associated with the reconstruction of transmission lines, including minor centerline shifts are not indicated for clarity purposes. See Proposed System Overview for further definition on final line configurations and designations.

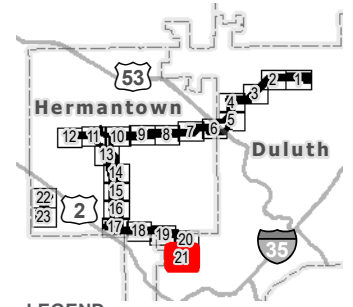
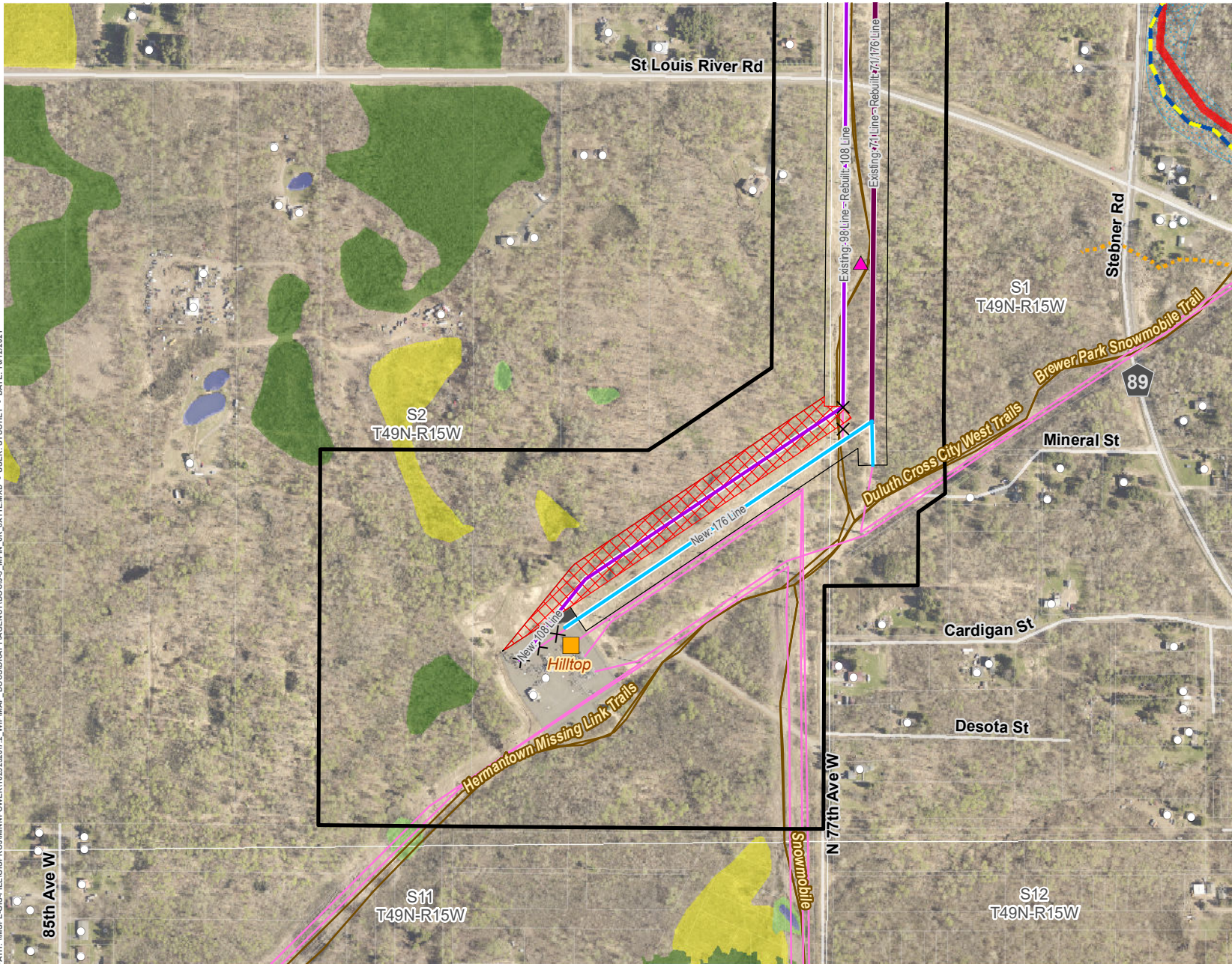


**PROJECT DETAIL - HILLTOP TO HAINES ROAD
DULUTH LOOP RELIABILITY PROJECT**

APPENDIX J-3: PAGE 20 OF 23



PATH: \\MSPE-GIS-FILE\GIS\PROJECTS\MINNPOWER\1025232017_2_WIP\MAP - DCS\DRIFT\AGENCY\DCDC\J_3_MPN_6K_0X1\1.MXD - USER: STUOHEY - DATE: 10/12/2021



- LEGEND**
- Proposed Route
 - Approximate ROW
 - Approximate New Impact Area
 - Project Substation
 - Substation Expansion Area
 - Project 115 kV Transmission Line (Single Circuit)
 - Project 115 kV Transmission Line (Double Circuit)
 - Project 230 kV Transmission Line (Single Circuit)
 - Removed Transmission Line (Realigned)
 - Existing Structure
 - Existing Transmission Line
 - Existing/Proposed Trail
 - Impaired Water
 - Designated Trout Stream
 - Protected Tributary to Designated Trout Stream
 - Unmapped Tributary
 - PWI Watercourse
 - FEMA Floodplain
 - National Wetlands Inventory**
 - Freshwater Emergent Wetland
 - Freshwater Forested Wetland
 - Freshwater Shrub Wetland
 - Freshwater Pond; Lake; Riverine
- *Note: Removals shown for significant realignments only. Line removals associated with the reconstruction of transmission lines, including minor centerline shifts are not indicated for clarity purposes. See Proposed System Overview for further definition on final line configurations and designations.

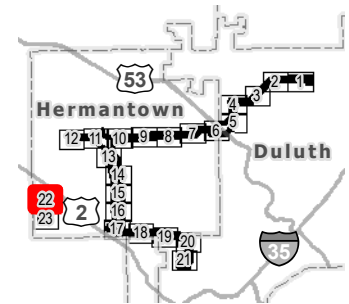
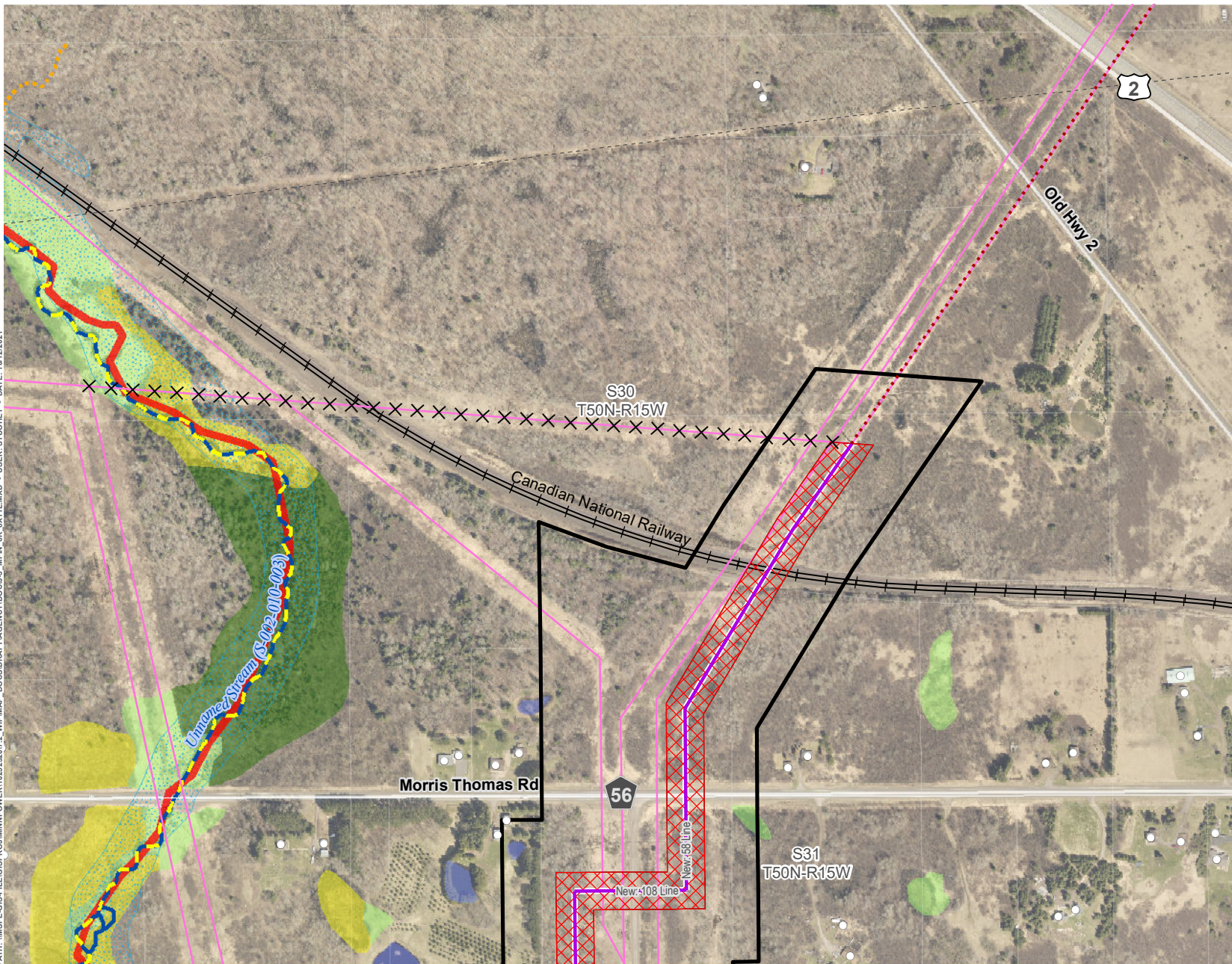


**PROJECT DETAIL - HILLTOP TO HAINES ROAD
DULUTH LOOP RELIABILITY PROJECT**

APPENDIX J-3: PAGE 21 OF 23



PATH: \\MSPE-GIS-FILE\GIS\PROJECTS\MINNPOWER\10252320\7-2_WIP\MAP - DOCS\DRIFT\AGENCY\DOCS\J_3_MPN_6K_0X1\TL.MXD - USER: STUOHNEY - DATE: 10/12/2021



LEGEND

- Proposed Route
- Approximate ROW
- Approximate New Impact Area
- Project 230 kV Transmission Line (Single Circuit)
- Removed Transmission Line (Realigned)
- Thermal Upgrades
- Existing Structure
- Existing Transmission Line
- Existing Pipeline
- Railroad
- Existing/Proposed Trail
- Impaired Water
- Designated Trout Stream
- Protected Tributary to Designated Trout Stream
- PWI Watercourse
- FEMA Floodplain
- National Wetlands Inventory**
 - Freshwater Emergent Wetland
 - Freshwater Forested Wetland
 - Freshwater Shrub Wetland
 - Freshwater Pond; Lake; Riverine

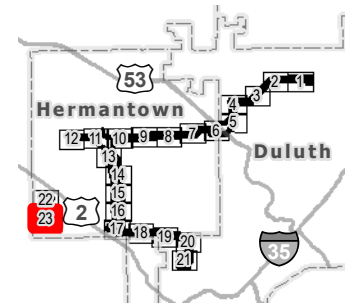
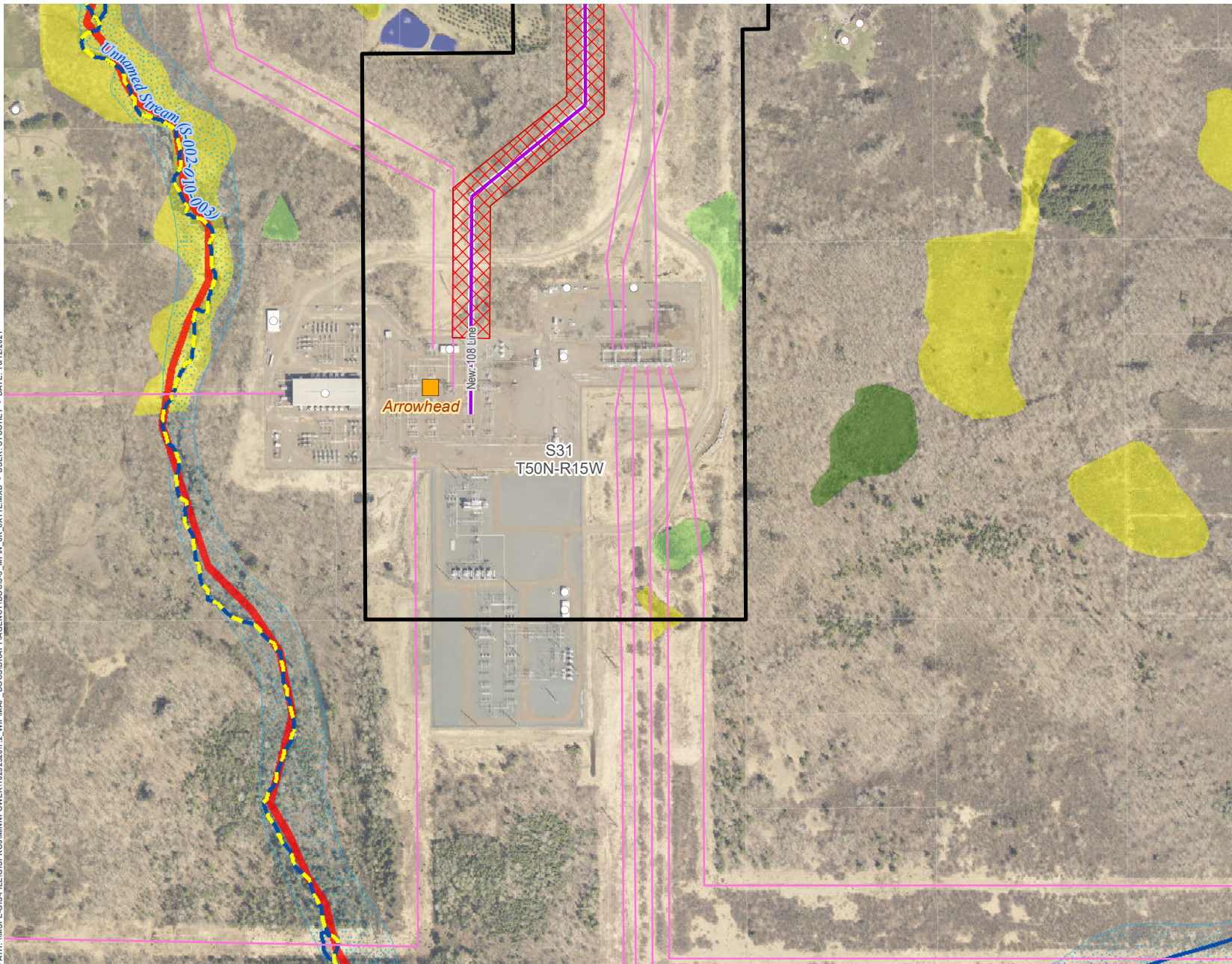
*Note: Removals shown for significant realignments only. Line removals associated with the reconstruction of transmission lines, including minor centerline shifts are not indicated for clarity purposes. See Proposed System Overview for further definition on final line configurations and designations.



**PROJECT DETAIL - ARROWHEAD
DULUTH LOOP RELIABILITY PROJECT**

APPENDIX J-3: PAGE 22 OF 23

PATH: \\MSPE-GIS-FILES\GIS\PROJECTS\MINNPOWER\102523207_2_WIP\MAP_DCS\DRIFTAGENCY\DOC\J_3_MPN_6K_0X1L\MXD - USER: STUOHEY - DATE: 10/12/2021



LEGEND

- Proposed Route
- Approximate ROW
- Approximate New Impact Area
- Project Substation
- Project 230 kV Transmission Line (Single Circuit)
- Existing Structure
- Existing Transmission Line
- Existing/Proposed Trail
- Impaired Water
- Designated Trout Stream
- PWI Watercourse
- FEMA Floodplain
- National Wetlands Inventory**
- Freshwater Emergent Wetland
- Freshwater Forested Wetland
- Freshwater Shrub Wetland
- Freshwater Pond; Lake; Riverine

*Note: Removals shown for significant realignments only. Line removals associated with the reconstruction of transmission lines, including minor centerline shifts are not indicated for clarity purposes. See Proposed System Overview for further definition on final line configurations and designations.



**PROJECT DETAIL - ARROWHEAD
DULUTH LOOP RELIABILITY PROJECT**

APPENDIX J-3: PAGE 23 OF 23