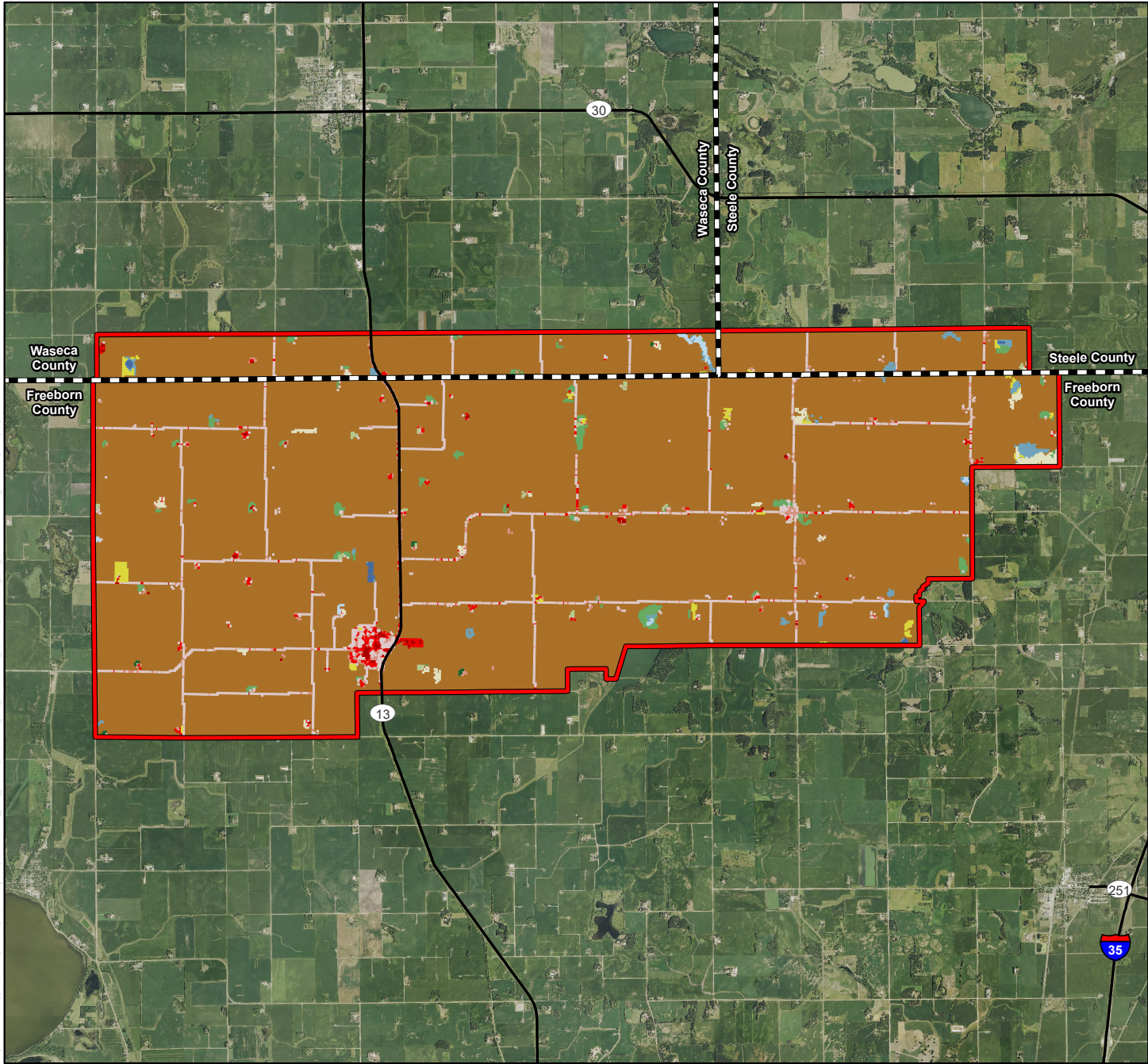


Map 6: Land Cover

Wisconsin Power and Light Company
Docket No. IP7145/WS-24-349

Map 6: Land Cover

© 2025 Westwood Professional Services, Inc.



Westwood
Talk Free (888) 937-6150 westwoodsps.com

Bent Tree North Wind Farm

Freeborn, Steele, and Waseca
Counties, Minnesota

Land Cover

Map 6

Legend

- Project Area
- County Boundary
- Major Highway

NLCD Land Cover

- Barren Land
- Cultivated Crops
- Deciduous Forest
- Developed, Low Intensity
- Developed, Medium Intensity
- Developed, High Intensity
- Developed, Open Space
- Emergent Herbaceous Wetlands
- Evergreen Forest
- Hay/Pasture
- Herbaceous
- Mixed Forest
- Open Water
- Woody Wetlands

Data Source(s): Westwood (2025); NAIP (2023); NLCD (2021);
U.S. Census Bureau (2023).



Map Document: Westwoodsps.local\Global Projects\003761_000_GIS_ArcPro\003761_040_SPA\Exhibits_250117.aprx 1/22/2025 1:13 PM Maldonado