




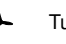



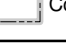
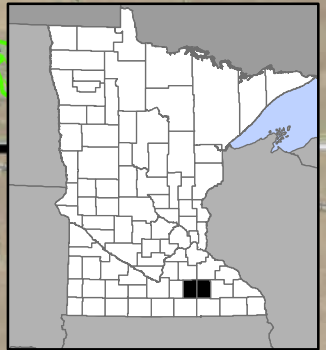
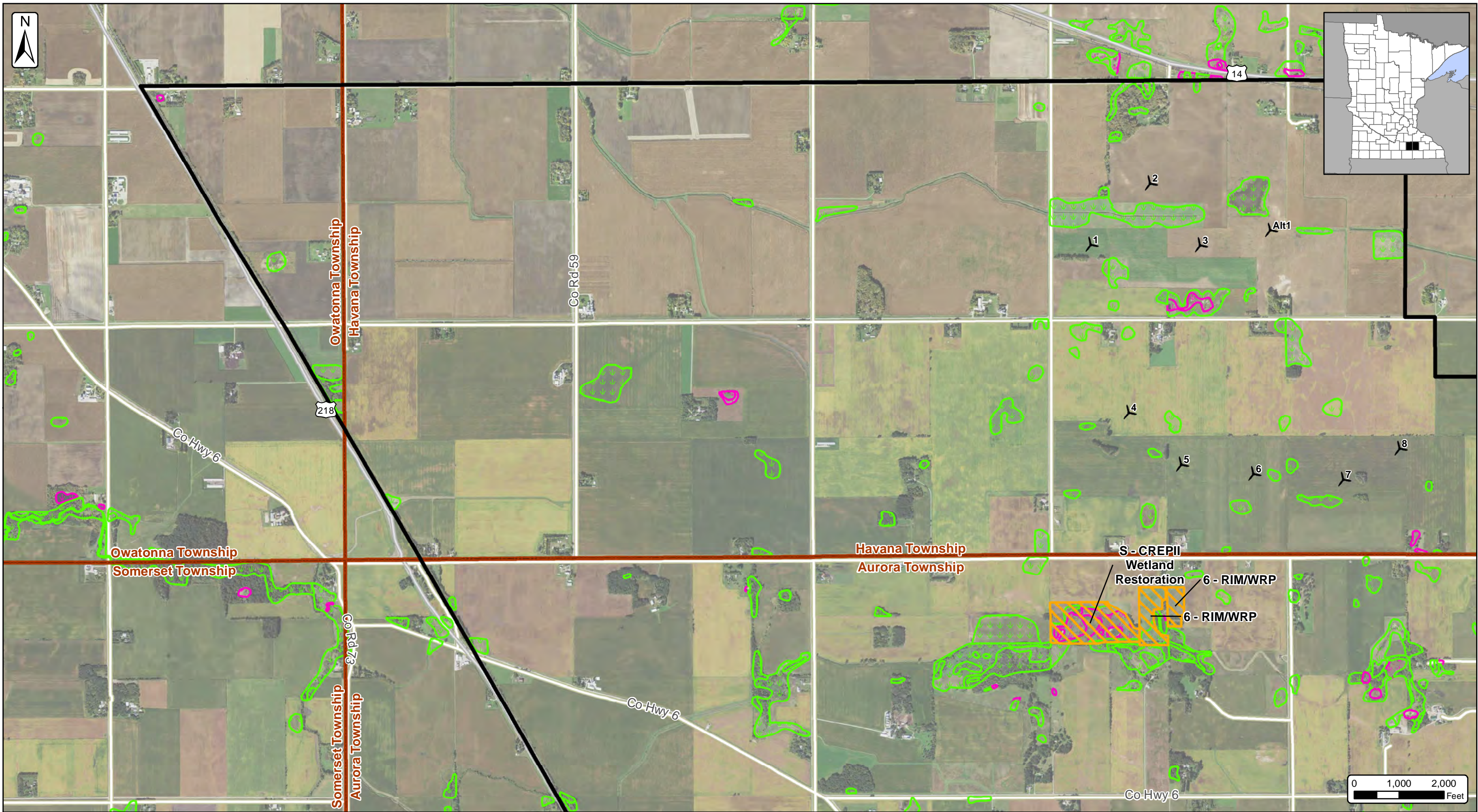


Dodge County Wind, LLC
Map 20 - National Wetland Inventory
Update for Minnesota Map
 Dodge County & Steele County, Minnesota
 Date: 12/11/2018











-  State Funded Conservation Easements (RIM Reserve, BWSR)
-  Public Water Basins (PWI)
-  Wetlands (NWI with MNDNR Update)
-  Classes 3, 4, & 5
-  All Other Wetlands
-  Turbine Layout (11/16/2018)
-  Project Area 03/13/2018 (±52,085 Ac.)
-  Mapbook Pages
-  City/Village
-  Counties

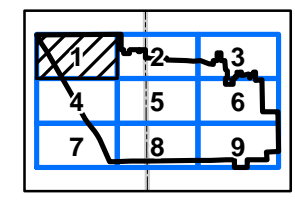


SOURCE: USDA NAIP 2017 IMAGERY



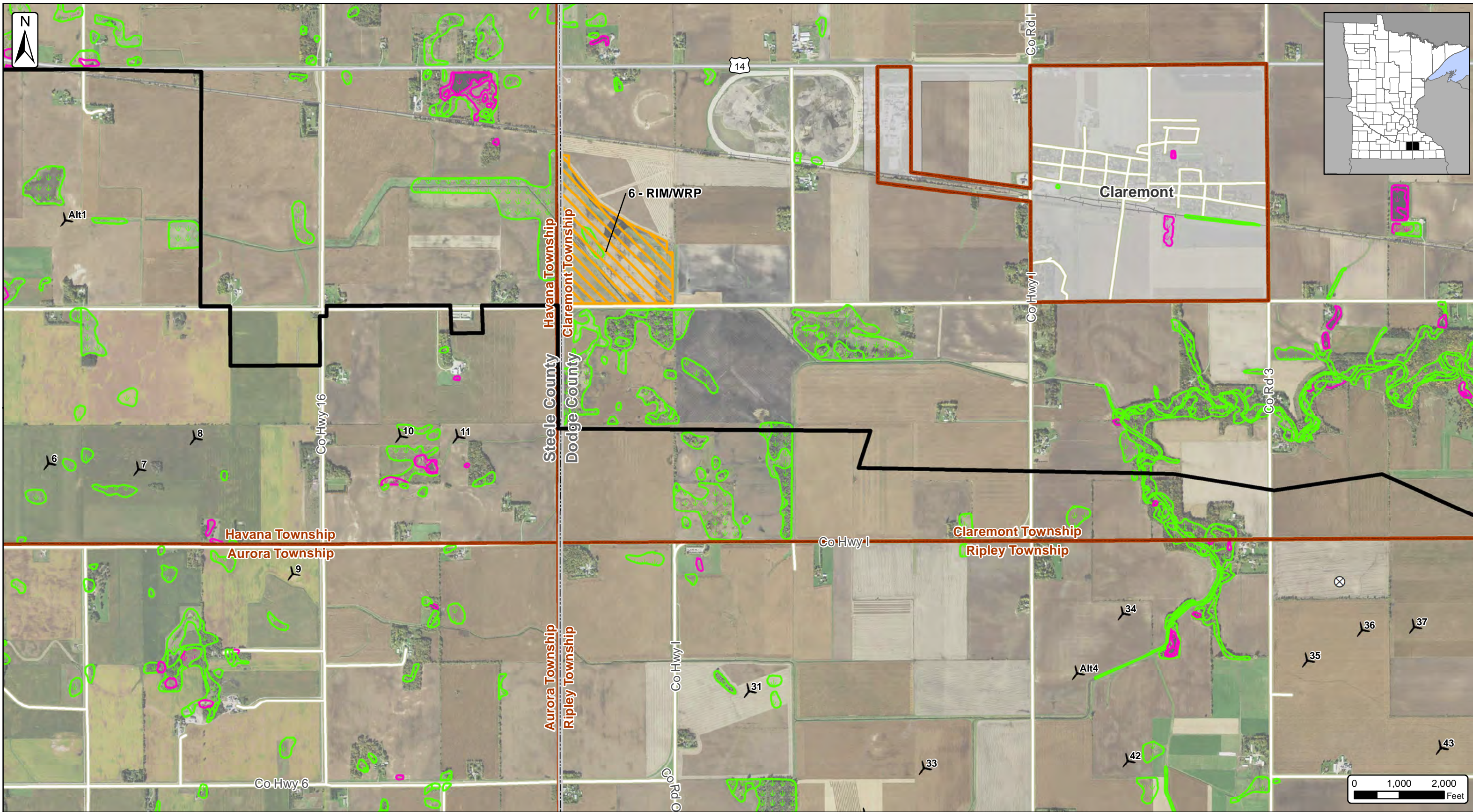
Dodge County Wind, LLC
Map 20 - National Wetland Inventory Update for Minnesota Map
 Dodge County & Steele County, Minnesota
 Date: 12/11/2018

-  State Funded Conservation Easements (RIM Reserve, BWSR)
-  Public Water Basins (PWI)
-  Wetlands (NWI with MNDNR Update) Classes 3, 4, & 5
-  All Other Wetlands
-  Turbine Layout (11/16/2018)
-  Proposed MET Towers (09/26/2018)
-  Project Area 03/13/2018 (±52,085 Ac.)
-  City/Village
-  Townships
-  Counties



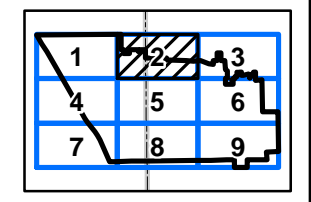
SOURCE: USDA NAIP 2017 IMAGERY





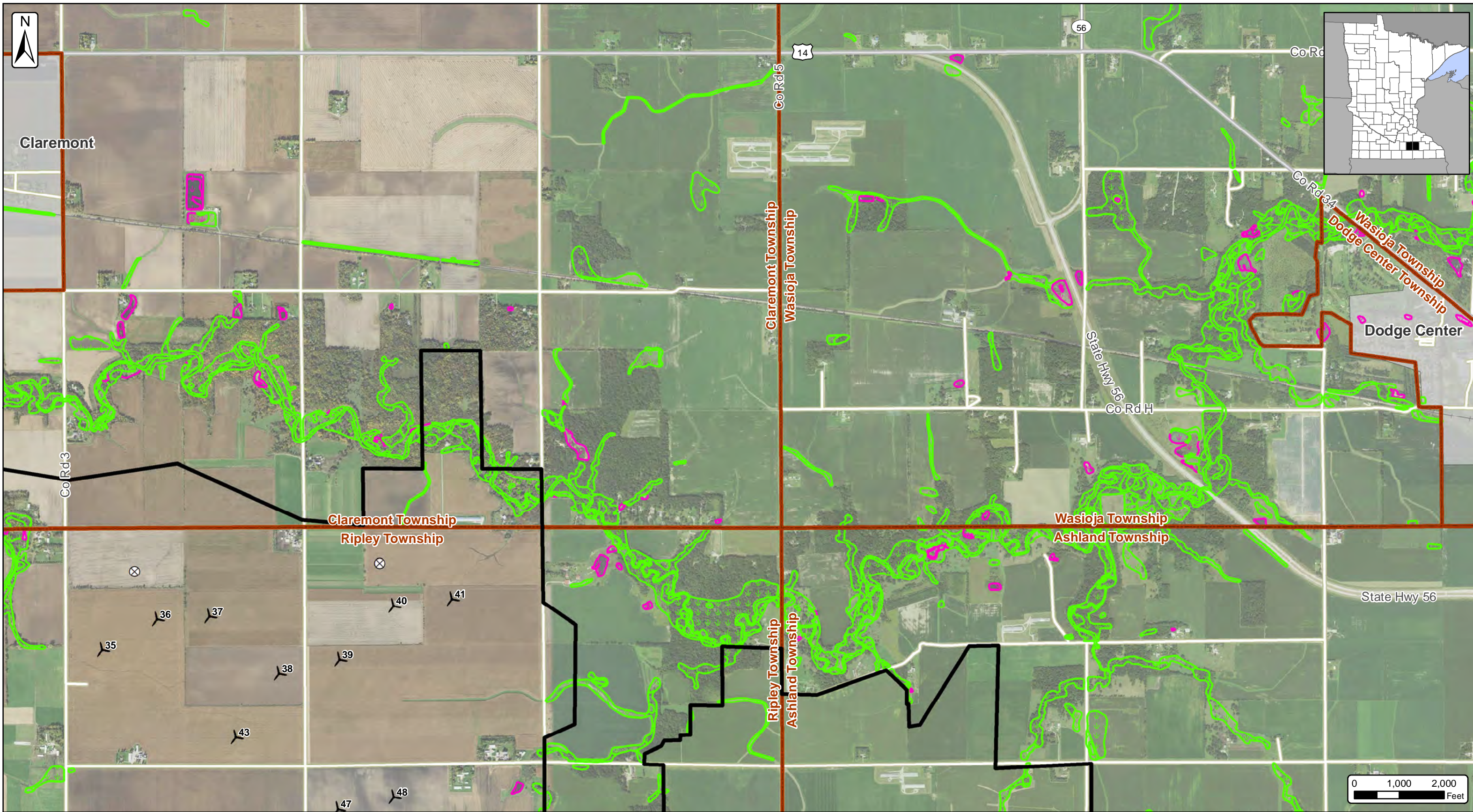
Dodge County Wind, LLC
Map 20 - National Wetland Inventory
Update for Minnesota Map
 Dodge County & Steele County, Minnesota
 Date: 12/11/2018

State Funded Conservation Easements (RIM Reserve, BWSR)	Turbine Layout (11/16/2018)	City/Village
Public Water Basins (PWI)	Proposed MET Towers (09/26/2018)	Townships
Wetlands (NWI with MNDNR Update)	Project Area 03/13/2018 (±52,085 Ac.)	Counties
Classes 3, 4, & 5		
All Other Wetlands		



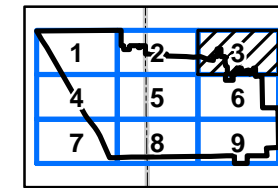
SOURCE: USDA NAIP 2017 IMAGERY



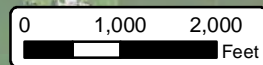


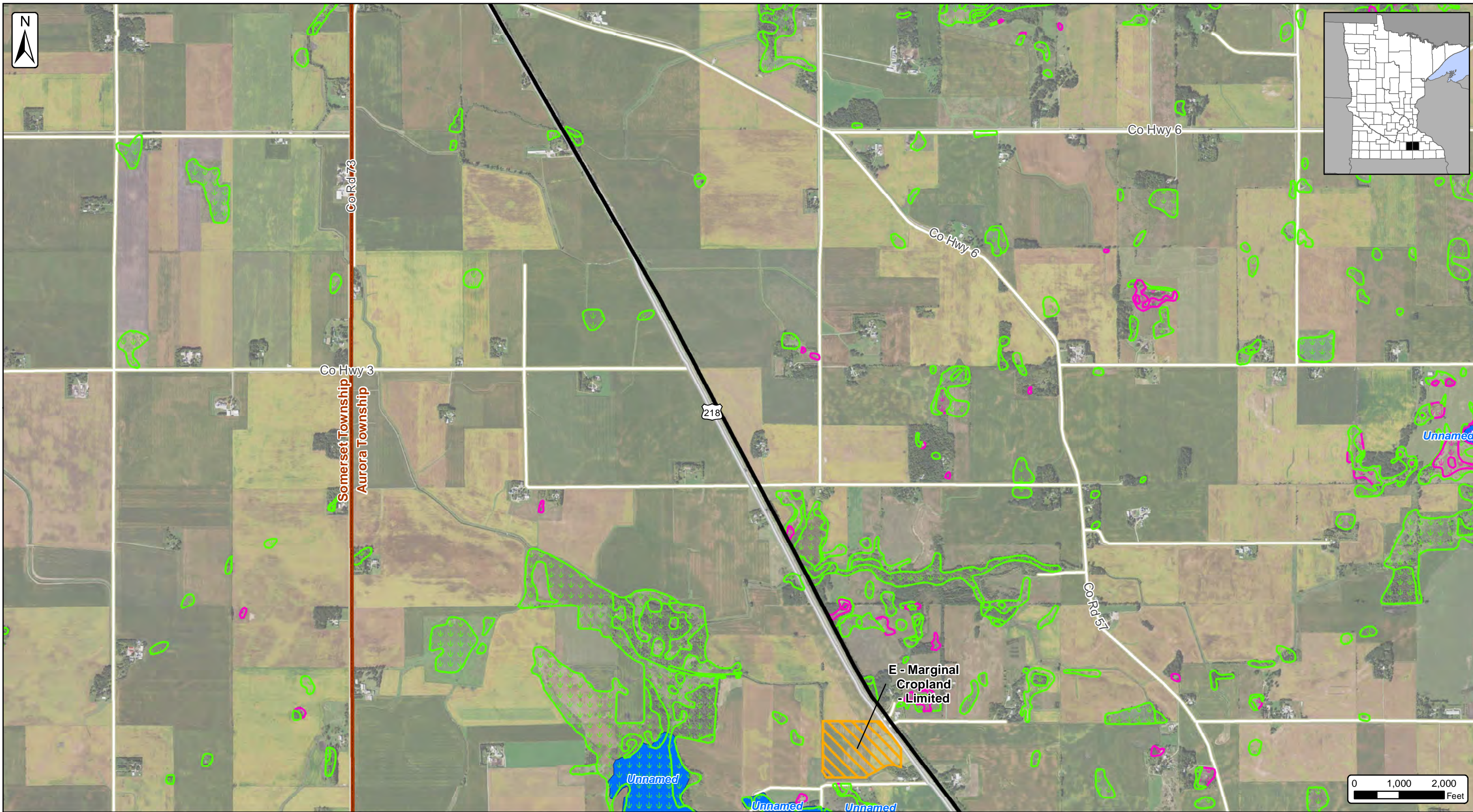
Dodge County Wind, LLC
Map 20 - National Wetland Inventory
Update for Minnesota Map
 Dodge County & Steele County, Minnesota
 Date: 12/11/2018

- | | | |
|---|---------------------------------------|--------------|
| State Funded Conservation Easements (RIM Reserve, BWSR) | Turbine Layout (11/16/2018) | City/Village |
| Public Water Basins (PWI) | Proposed MET Towers (09/26/2018) | Townships |
| Wetlands (NWI with MNDNR Update) | Project Area 03/13/2018 (±52,085 Ac.) | Counties |
| Classes 3, 4, & 5 | | |
| All Other Wetlands | | |













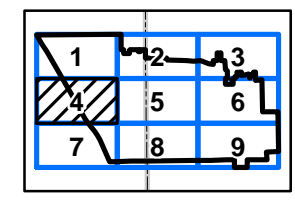
SOURCE: USDA NAIP 2017 IMAGERY





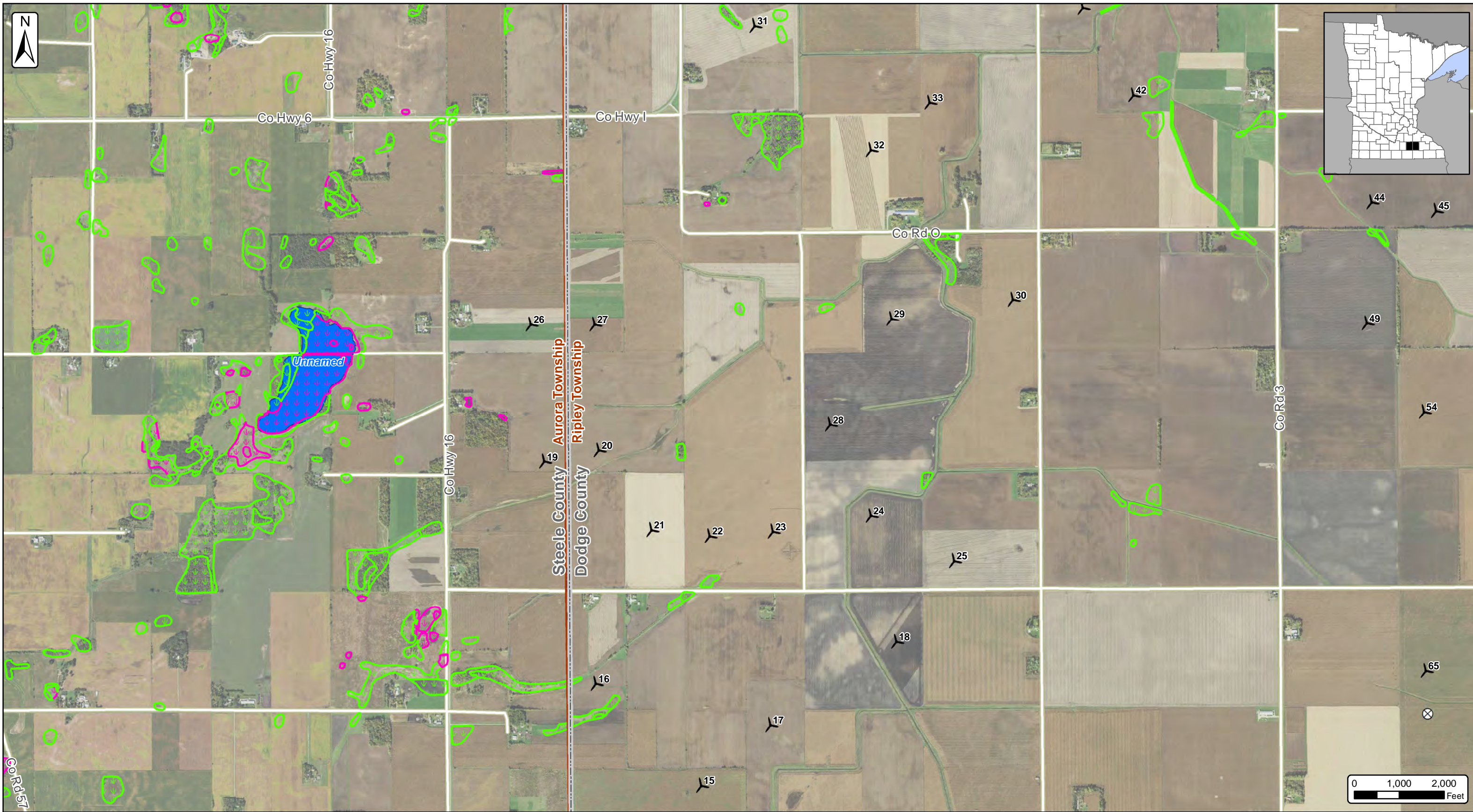
Dodge County Wind, LLC
Map 20 - National Wetland Inventory
Update for Minnesota Map
 Dodge County & Steele County, Minnesota
 Date: 12/11/2018

 State Funded Conservation Easements (RIM Reserve, BWSR)	 Turbine Layout (11/16/2018)	 City/Village
 Public Water Basins (PWI)	 Proposed MET Towers (09/26/2018)	 Townships
Wetlands (NWI with MNDNR Update)	 Project Area 03/13/2018 (±52,085 Ac.)	 Counties
 Classes 3, 4, & 5		
 All Other Wetlands		



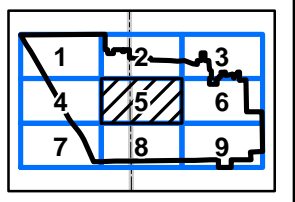
SOURCE: USDA NAIP 2017 IMAGERY





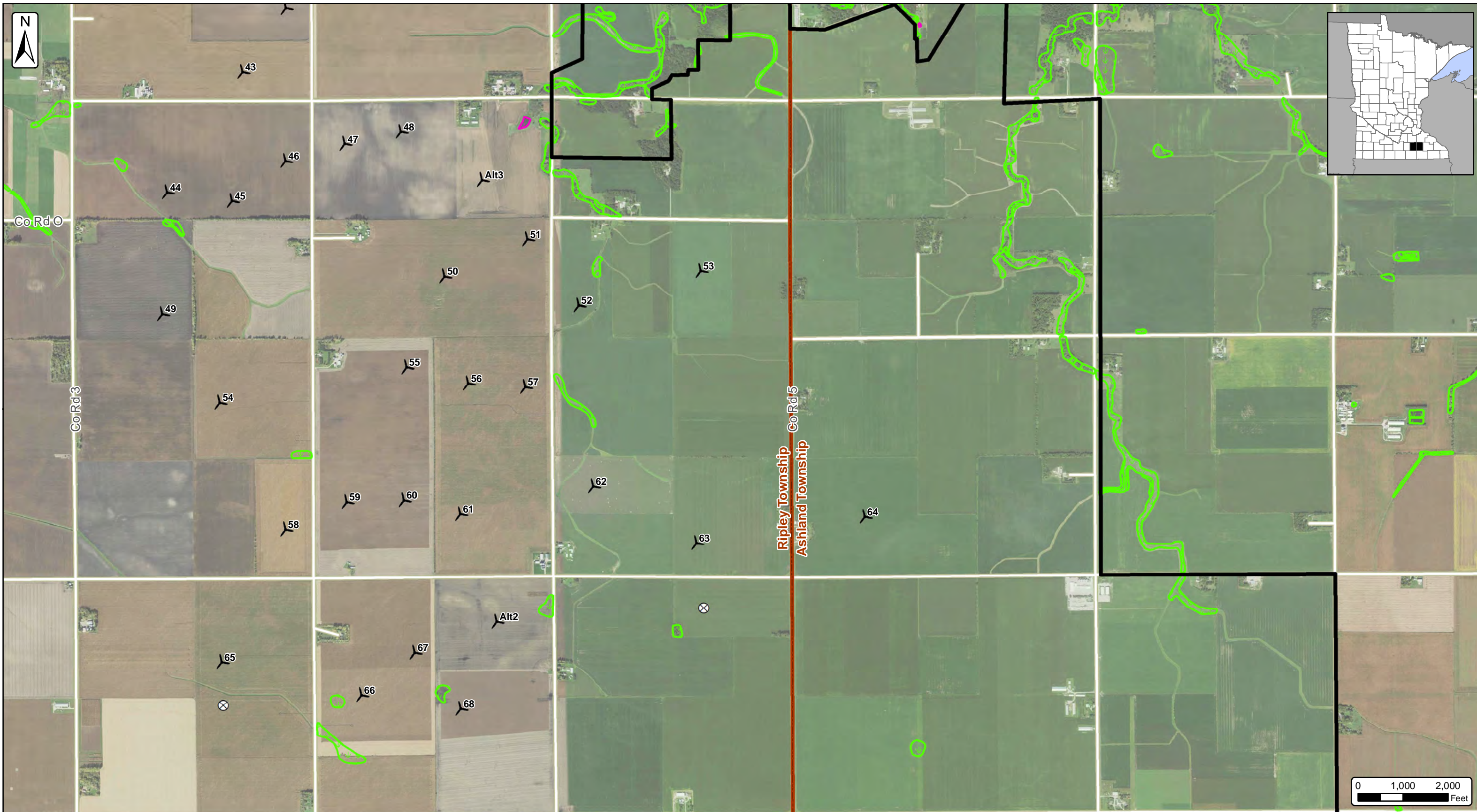
Dodge County Wind, LLC
Map 20 - National Wetland Inventory
Update for Minnesota Map
 Dodge County & Steele County, Minnesota
 Date: 12/11/2018

State Funded Conservation Easements (RIM Reserve, BWSR)	Turbine Layout (11/16/2018)	City/Village
Public Water Basins (PWI)	Proposed MET Towers (09/26/2018)	Townships
Wetlands (NWI with MNDNR Update) Classes 3, 4, & 5	Project Area 03/13/2018 (±52,085 Ac.)	Counties
All Other Wetlands		



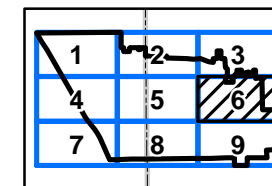
SOURCE: USDA NAIP 2017 IMAGERY





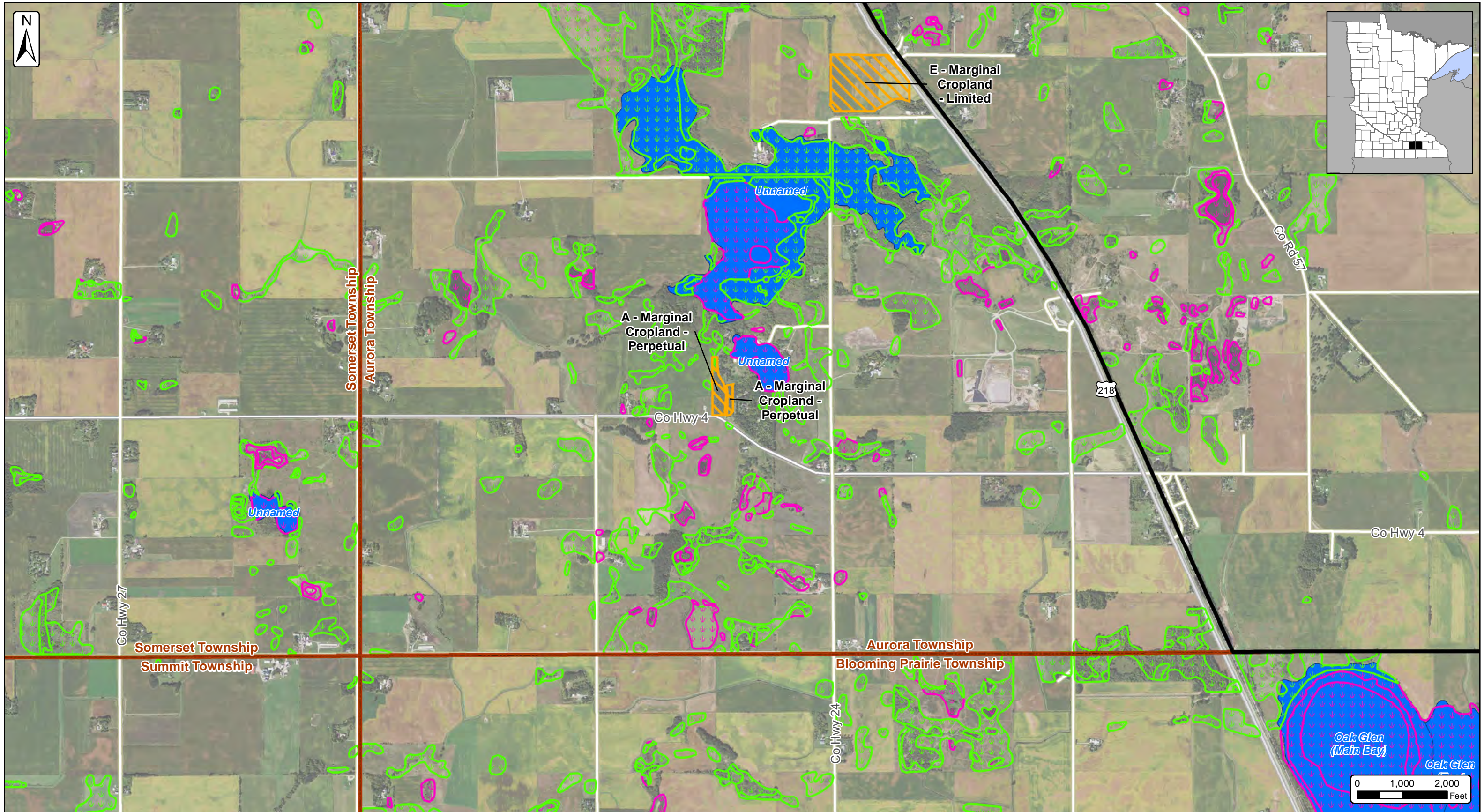
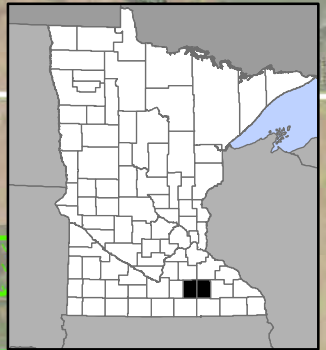
Dodge County Wind, LLC
Map 20 - National Wetland Inventory
Update for Minnesota Map
 Dodge County & Steele County, Minnesota
 Date: 12/11/2018

- | | | |
|---|---------------------------------------|--------------|
| State Funded Conservation Easements (RIM Reserve, BWSR) | Turbine Layout (11/16/2018) | City/Village |
| Public Water Basins (PWI) | Proposed MET Towers (09/26/2018) | Townships |
| Wetlands (NWI with MNDNR Update) | Project Area 03/13/2018 (±52,085 Ac.) | Counties |
| Classes 3, 4, & 5 | | |
| All Other Wetlands | | |



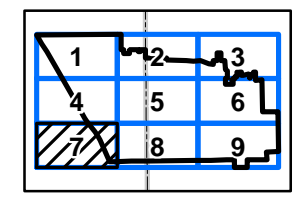
SOURCE: USDA NAIP 2017 IMAGERY



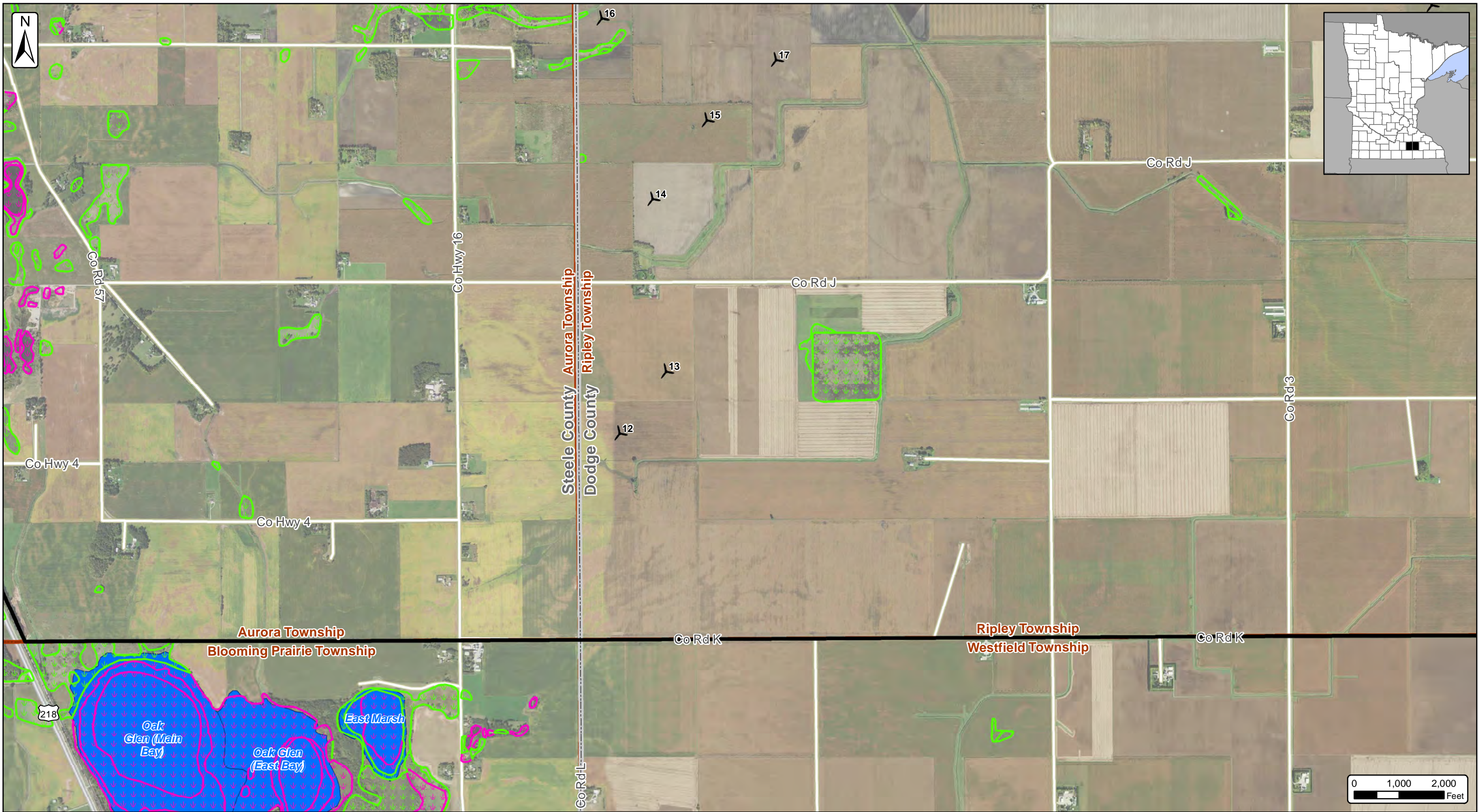


Dodge County Wind, LLC
Map 20 - National Wetland Inventory
Update for Minnesota Map
 Dodge County & Steele County, Minnesota
 Date: 12/11/2018

- | | | |
|---|---------------------------------------|--------------|
| State Funded Conservation Easements (RIM Reserve, BWSR) | Turbine Layout (11/16/2018) | City/Village |
| Public Water Basins (PWI) | Proposed MET Towers (09/26/2018) | Townships |
| Wetlands (NWI with MNDNR Update) Classes 3, 4, & 5 | Project Area 03/13/2018 (±52,085 Ac.) | Counties |
| All Other Wetlands | | |

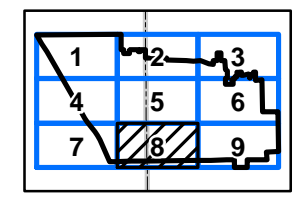


SOURCE: USDA NAIP 2017 IMAGERY

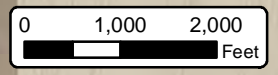


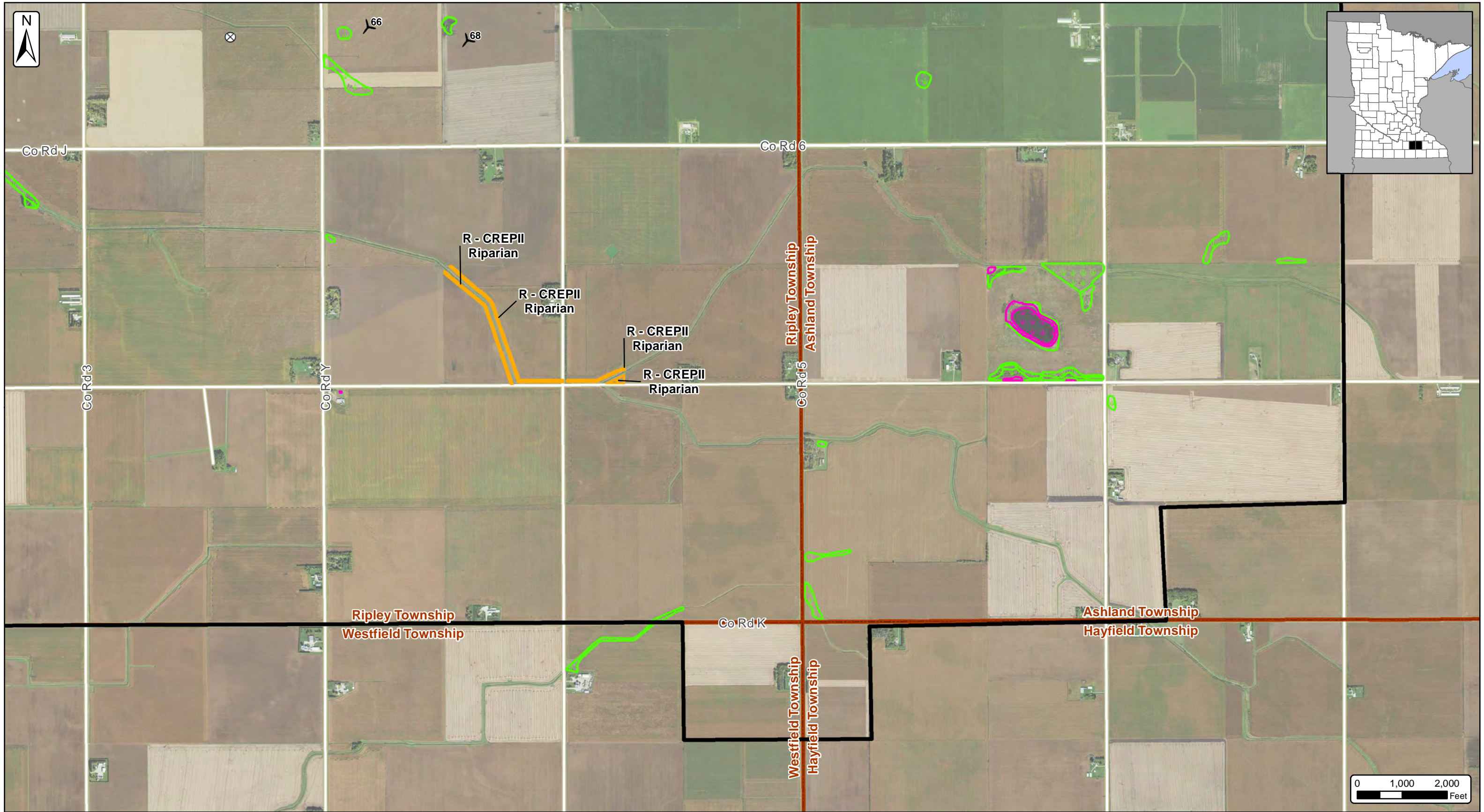
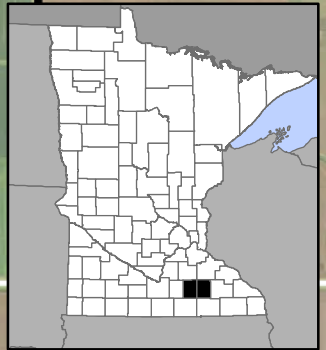
Dodge County Wind, LLC
Map 20 - National Wetland Inventory
Update for Minnesota Map
 Dodge County & Steele County, Minnesota
 Date: 12/11/2018

- | | | |
|---|---------------------------------------|--------------|
| State Funded Conservation Easements (RIM Reserve, BWSR) | Turbine Layout (11/16/2018) | City/Village |
| Public Water Basins (PWI) | Proposed MET Towers (09/26/2018) | Townships |
| Wetlands (NWI with MNDNR Update) | Project Area 03/13/2018 (±52,085 Ac.) | Counties |
| Classes 3, 4, & 5 | | |
| All Other Wetlands | | |


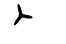










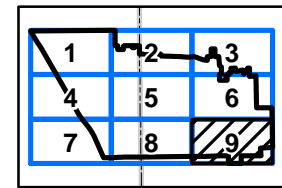
SOURCE: USDA NAIP 2017 IMAGERY





Dodge County Wind, LLC
Map 20 - National Wetland Inventory
Update for Minnesota Map
 Dodge County & Steele County, Minnesota
 Date: 12/11/2018

- | | | |
|---|---|--|
|  State Funded Conservation Easements (RIM Reserve, BWSR) |  Turbine Layout (11/16/2018) |  City/Village |
|  Public Water Basins (PWI) |  Proposed MET Towers (09/26/2018) |  Townships |
| Wetlands (NWI with MNDNR Update) |  Project Area 03/13/2018 (±52,085 Ac.) |  Counties |
|  Classes 3, 4, & 5 | | |
|  All Other Wetlands | | |



SOURCE: USDA NAIP 2017 IMAGERY

