

Thomas Burns
651.621.8322 – Direct
651.621.8323 – Facsimile
tgburns@otcpas.com



Depend on **Our People**. Count on **Our Advice**.SM

September 21, 2018

Daniel P. Wolf
Executive Secretary
Minnesota Public Utilities Commission
121 Seventh Place E, Suite 350
St. Paul, MN 55101-2147

Re: An Update in Matter of Paul Bunyan Rural Telephone Cooperative's Status as an Eligible Telecommunications Carrier (ETC)

Dear Mr. Wolf:

Enclosed via eFiling please find a letter which provides an update on the Paul Bunyan Rural Telephone Cooperative's status as an Eligible Telecommunications Carrier

Sincerely,

/s/ Thomas G. Burns

Thomas G. Burns
Consultant on behalf of Paul Bunyan Rural Telephone Cooperative



1831 Anne St NW | Bemidji, MN 56601

Gary Johnson
CEO/General Manager
(218) 444-1128
gjohnson@paulbunyan.net

September 21, 2018

Minnesota Public Utilities Commission
121 7th Place E
Suite 350
Saint Paul, Minnesota 55101

Dear Commissioners:

This letter is to inform the Commission that Paul Bunyan Rural Telephone Cooperative (“Paul Bunyan”) won the FCC Connect America Fund (“CAF II”) reverse auction for certain census blocks. Accordingly, Paul Bunyan will build out its network to make service available to locations within certain census blocks and will receive universal service support based on FCC rules.

The Commission designated Paul Bunyan an ETC in Docket 15-433 to enable network build out in certain census blocks where Paul Bunyan would receive universal service support as part of the FCC’ Rural Broadband Experiment (“RBE”). In Docket 17-854 the Commission granted Paul Bunyan’s request to expand its ETC designation for the purposes of offering Lifeline services to qualifying customers.

The attached map distinguishes the CAF II and RBE census blocks areas as compared to the broader exchange areas where the Commission granted ETC designation for the purpose of offering the Lifeline discount.

If you have any questions in this matter please contact me.

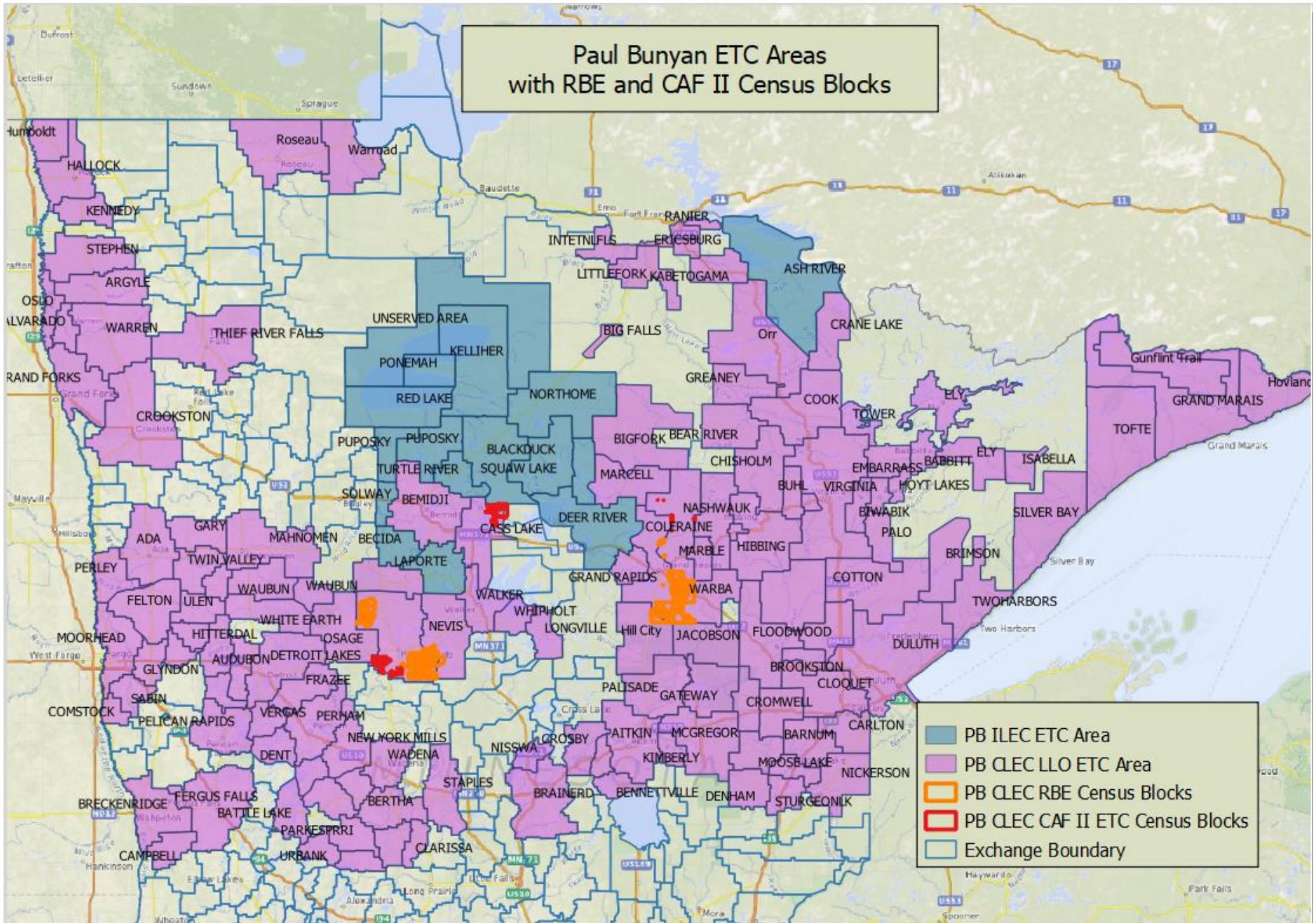
Sincerely,

A handwritten signature in black ink, appearing to read "Gary Johnson", is written over a light blue horizontal line.

Gary Johnson
CEO & General Manager

Attachments:

- Map of Paul Bunyan ETC area and RBE and CAF II census Blocks
- List of CAF II census blocks to be served by Paul Bunyan



CAF II Census Blocks (new areas)

270054501001126	270079400021160	270570705001158
270054501001127	270570705001044	270570705001161
270054501002000	270570705001048	270570705001163
270054501002002	270570705001090	270570705001165
270054501002012	270570705001093	270570705001171
270054501002014	270570705001111	270570705001175
270079400021115	270570705001122	270570705001177
270079400021116	270570705001125	270614804003048
270079400021117	270570705001133	270614804003058
270079400021121	270570705001134	270614804003081
270079400021137	270570705001140	270614804003083
270079400021144	270570705001149	270614804003087
270079400021145	270570705001150	270614804004024
270079400021146	270570705001151	270614804004027
270079400021148	270570705001154	270614804004094
270079400021152	270570705001156	

RBE Census Blocks (Docket 15-433)

270054501003016	270570707001092	270614806004040
270054501003017	270570707001093	270614806004042
270054501003026	270570707001094	270614806004047
270054501003028	270570707001104	270614806004048
270054501003042	270570707001105	270614806004073
270054501003048	270570707001199	270614807002006
270054501003051	270570707001211	270614807002010
270054501003053	270570707001215	270614807002054
270054501003058	270570707001217	270614807002061
270054501003059	270570707001218	270614807002063
270059400001003	270570707001224	270614807002078
270059400001213	270570707001227	270614807002083
270570704002051	270570707001232	270614807002084
270570704002061	270570707001234	270614807002086
270570704002069	270570707001236	270614807002088
270570704002072	270570707001238	270614807002089
270570704002074	270570707001247	270614807002091
270570704002076	270570707001249	270614807002095
270570705001110	270570707001250	270614807002096
270570707001009	270570707001252	270614808011001
270570707001014	270570707001266	270614808011005
270570707001015	270570707001289	270614808011007
270570707001018	270570707002066	270614808011010
270570707001019	270570707002067	270614808011011
270570707001027	270570707002074	270614808011040
270570707001030	270614806002030	270614808011078
270570707001031	270614806002031	270614808022119
270570707001032	270614806002039	270614808022121
270570707001034	270614806002042	270614808022122
270570707001035	270614806002044	270614809001068
270570707001039	270614806004000	270614809001071
270570707001044	270614806004002	270614809001072
270570707001047	270614806004003	270614809001078
270570707001064	270614806004004	270614809001079
270570707001066	270614806004005	270614809001080
270570707001067	270614806004008	270614809001082
270570707001068	270614806004013	270614809001083
270570707001069	270614806004014	270614809001093
270570707001071	270614806004016	270614809001094
270570707001073	270614806004018	270614809003002
270570707001077	270614806004023	270614809003029
270570707001079	270614806004025	
270570707001080	270614806004027	
270570707001085	270614806004032	
270570707001087	270614806004035	
270570707001091	270614806004037	