

Data Source(s): Westwood (2016); ESRI (2012); MNDNR (2010); U.S. Department of Agriculture, Natural Resources Conservation Service (2010); Census Bureau (2015).

**Legend**

- Proposed Turbine (V100)
- Met Tower
- Current Project Boundary
- Municipal Boundary
- County Boundary
- Proposed Access Road
- Proposed Collection Line
- Proposed Transmission Line
- Proposed Substation
- Highway
- Major Road
- Minor Road
- Railroad
- PLS Township Boundary
- PLS Section Boundary
- All areas are prime farmland ( 47.66%)
- Farmland of statewide importance ( 13.86%)
- Not prime farmland ( 13.37%)
- Prime farmland if drained ( 23.04%)
- Prime farmland if protected from flooding or not frequently flooded during the growing season ( 2.06%)

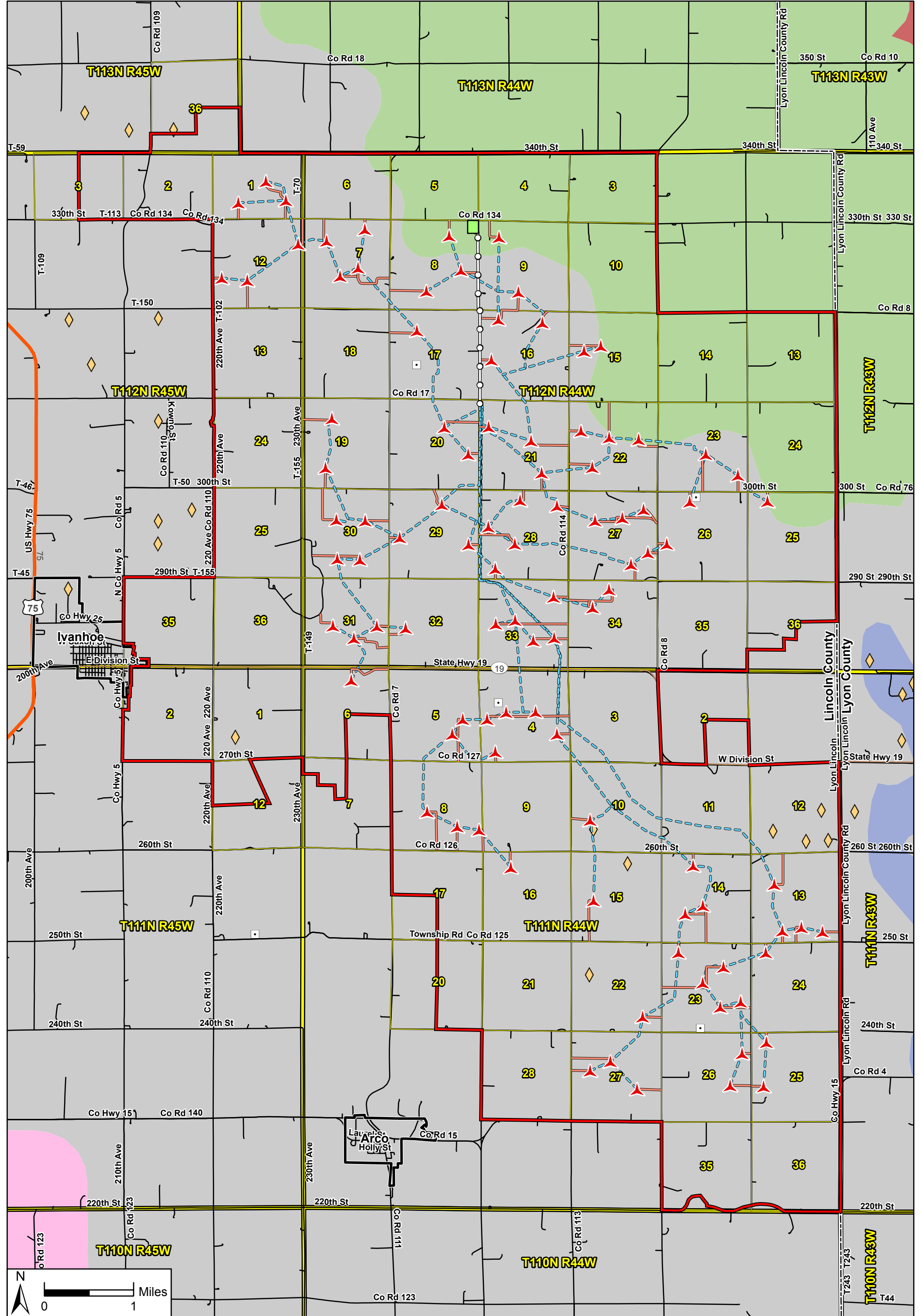
# Red Pine Wind Project

Lincoln County, Minnesota

## Prime Farmland

**Westwood**  
Toll Free (888) 937-5150 westwoodps.com  
Westwood Professional Services, Inc.





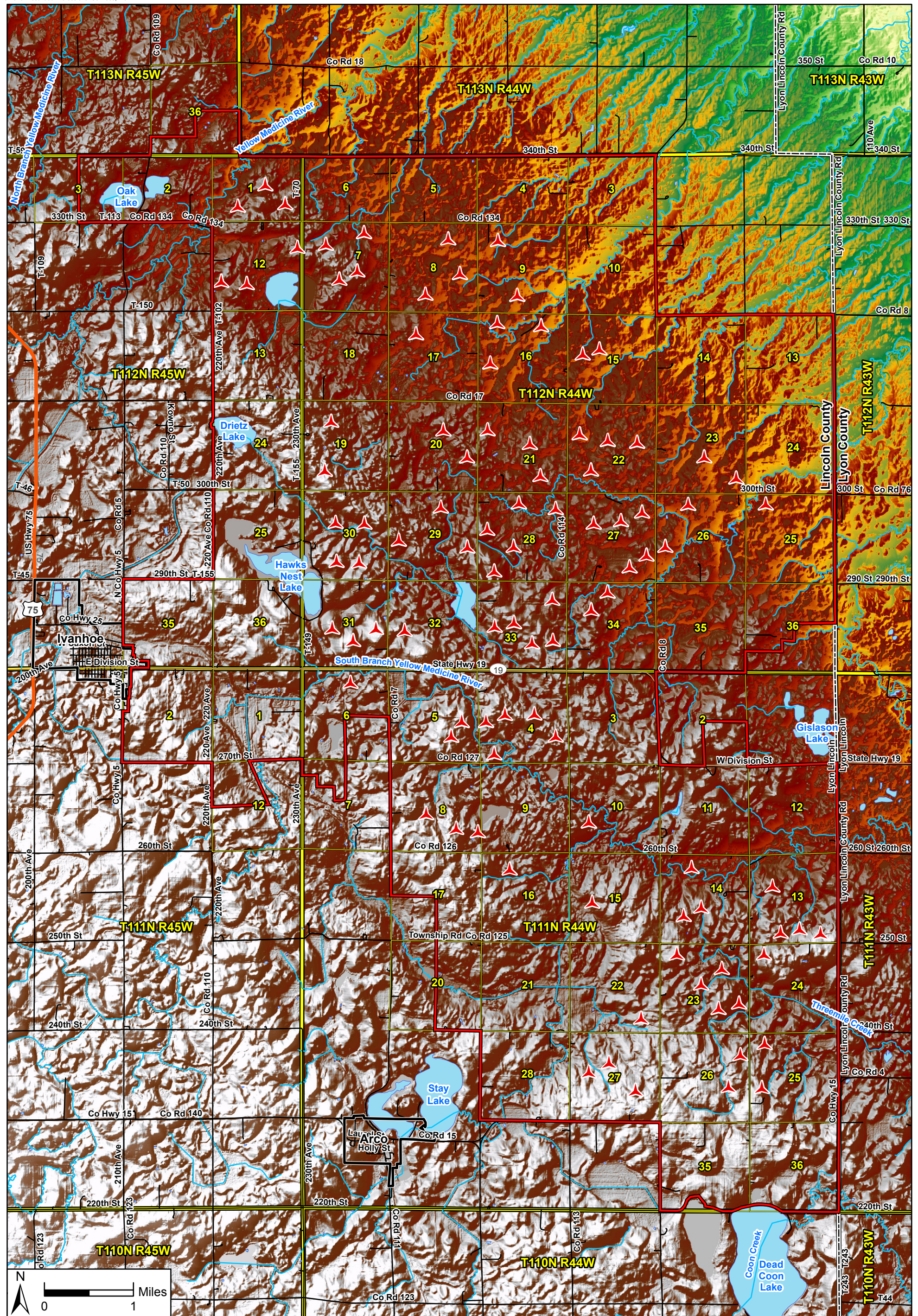
**Westwood**  
 Toll Free (888) 937-5150 westwoodps.com  
 Westwood Professional Services, Inc.

- Legend**
- Proposed Turbine (V100)
  - Current Project Boundary
  - Gravel Pit
  - Municipal Boundary
  - County Boundary
  - Met Tower
  - Proposed Access Road (V11)
  - Proposed Collection Line (V11)
  - Proposed Transmission Line
  - Proposed Substation
  - Highway
  - Major Road
  - Minor Road
  - Railroad
  - PLS Township Boundary
  - PLS Section Boundary

- General Soils**
- Flom-Barnes (s3542)
  - Flom-Buse-Barnes-Arvilla (s3544)
  - Forman-Buse-Aastad (s6894)
  - McIntosh variant-Du Page-Calco-Burr (s3541)
  - Singaas-Flom (s3543)

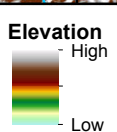
**Red Pine Wind Project**  
 Lincoln County, Minnesota  
**Soils And Mining Resources**  
 Map 14





Data Source(s): Westwood (2016); ESRI (2012); MNDNR (2010); NED (2016); USGS NHD Dataset (2013); Census Bureau (2015).

- Legend**
- Proposed Turbine (V100)
  - Current Project Boundary
  - NHD Flowline
  - NHD Waterbody
  - Municipal Boundary
  - County Boundary
  - Highway
  - Major Road
  - Minor Road
  - Railroad
  - PLS Township Boundary
  - PLS Section Boundary



# Red Pine Wind Project

Lincoln County, Minnesota

Digital Elevation

**Westwood**  
Toll Free (888) 937-5150 westwoodps.com  
Westwood Professional Services, Inc.



