

Proposed Pipeline - Sandpiper	Milepost - Sandpiper	Tract Boundary
Existing Enbridge Pipelines	Potential Block Valve	Facility Boundary
Foreign Pipes	Environmental Survey Area (ESA)	Previously Sited Facility Boundary
Transmission Lines		Section Lines
SPREAD BREAK		

500 250 0 500 1,000 Feet

DRAWN	CHECKED	APPROVED	DATE	REV NO.	DESCRIPTION
			1/29/14	2	PUC Update - Revision D-2 Alignment
			12/19/13	1	PUC Update - Revision D Alignment
			10/10/13	0	PUC Submittal

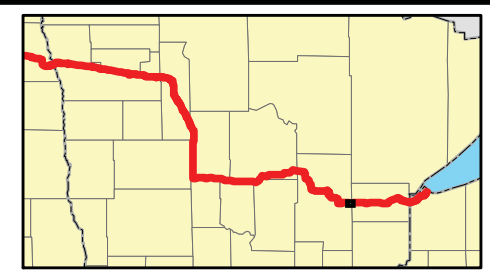
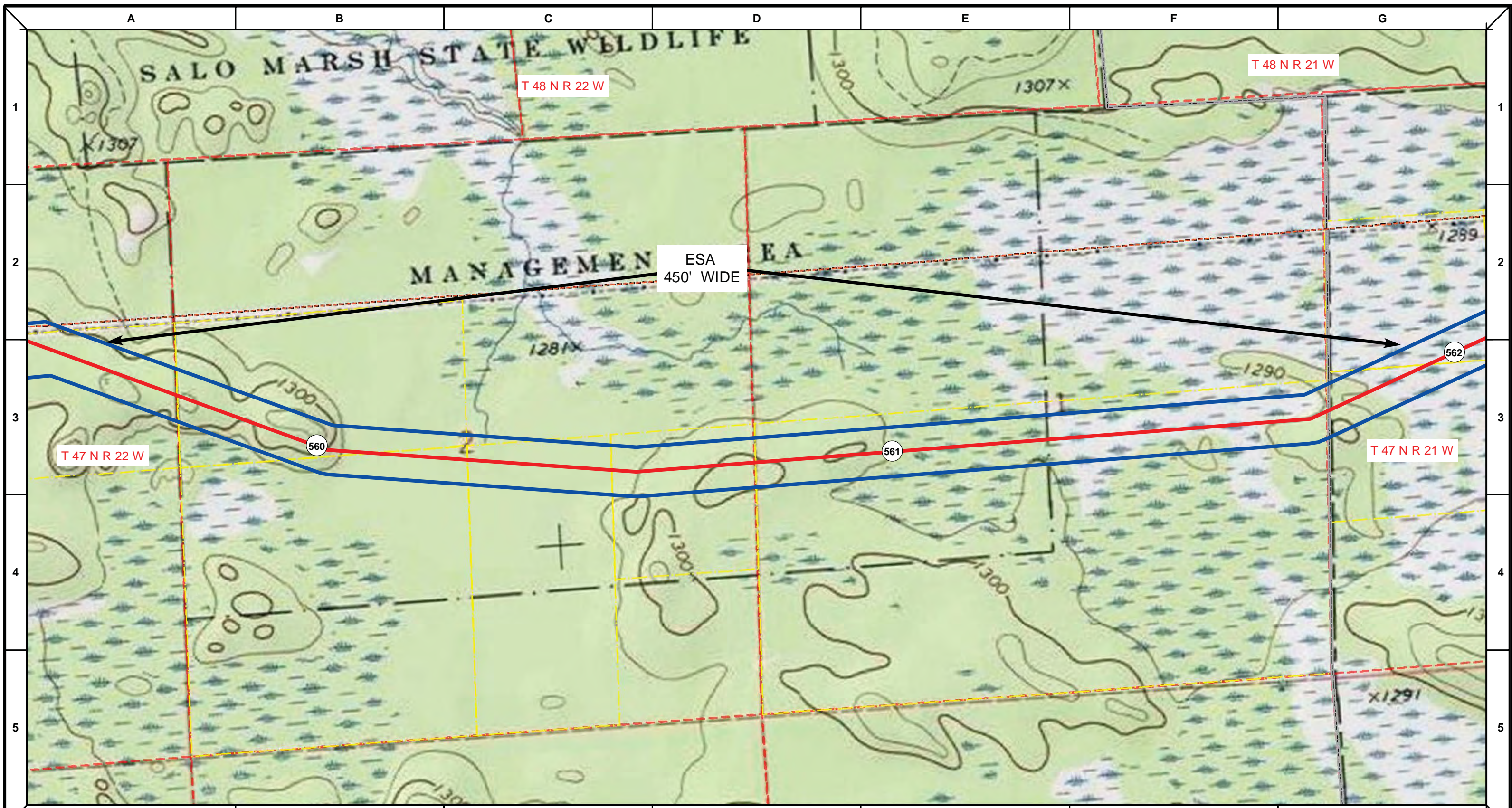
NORTH DAKOTA PIPELINE COMPANY LLC

**PROPOSED SANDPIPER PIPELINE PROJECT**  
 ROUTE MAP  
 Aitkin & Carlton County, MN

DRAWN: <i>MLB</i>	CHECKED: <i>--</i>
DATE: <i>Jan 30, 2014</i>	SCALE: <i>AS SHOWN</i>

Spread:8      Map: 107 of 123





Proposed Pipeline - Sandpiper	Milepost - Sandpiper	Tract Boundary
Existing Enbridge Pipelines	Potential Block Valve	Facility Boundary
Foreign Pipes	Environmental Survey Area (ESA)	Previously Sited Facility Boundary
Transmission Lines		Section Lines
SPREAD BREAK		

DRAWN	CHECKED	APPROVED	DATE	REV NO.	DESCRIPTION
			1/29/14	2	PUC Update - Revision D-2 Alignment
			12/19/13	1	PUC Update - Revision D Alignment
			10/10/13	0	PUC Submittal

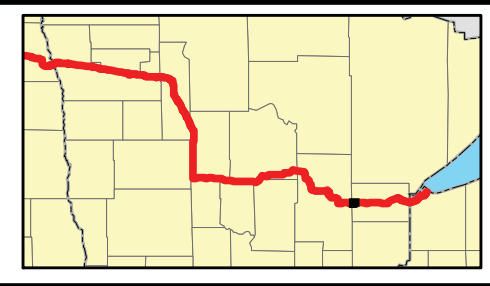
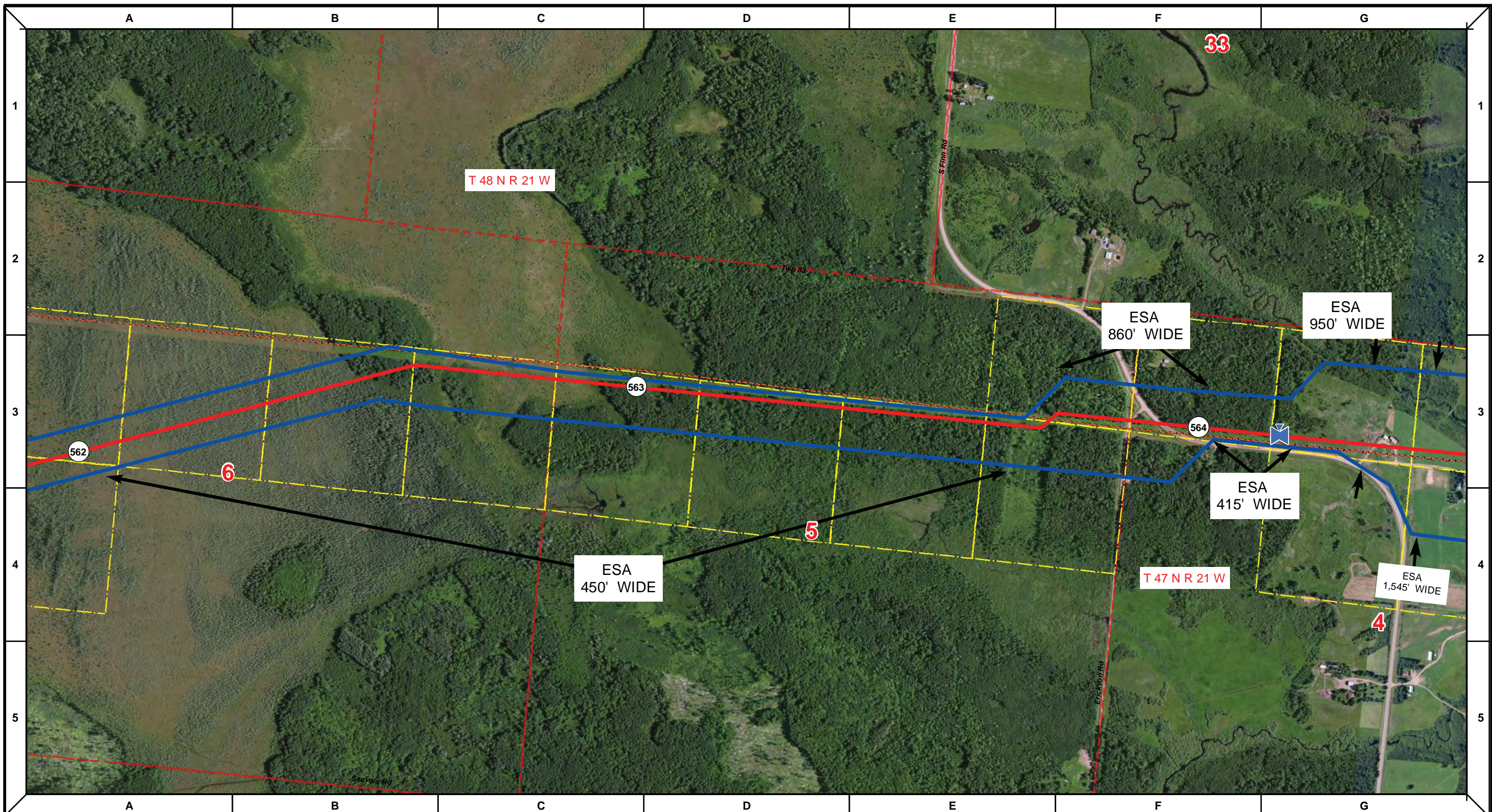
NORTH DAKOTA PIPELINE COMPANY LLC

**PROPOSED SANDPIPER PIPELINE PROJECT**  
**ROUTE MAP**  
 Aitkin & Carlton County, MN

DRAWN: <b>MLB</b>	CHECKED: <b>--</b>
DATE: <b>Jan 30, 2014</b>	SCALE: <b>AS SHOWN</b>

Spread:8      Map: 107 of 123





Proposed Pipeline - Sandpiper	Milepost - Sandpiper	Tract Boundary
Existing Enbridge Pipelines	Potential Block Valve	Facility Boundary
Foreign Pipes	Environmental Survey Area (ESA)	Previously Sited Facility Boundary
Transmission Lines		Section Lines
SPREAD BREAK		

500 250 0 500 1,000 Feet

DRAWN	CHECKED	APPROVED	DATE	REV NO.	DESCRIPTION
			1/29/14	2	PUC Update - Revision D-2 Alignment
			12/19/13	1	PUC Update - Revision D Alignment
			10/10/13	0	PUC Submittal

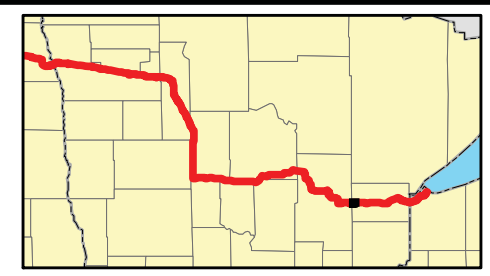
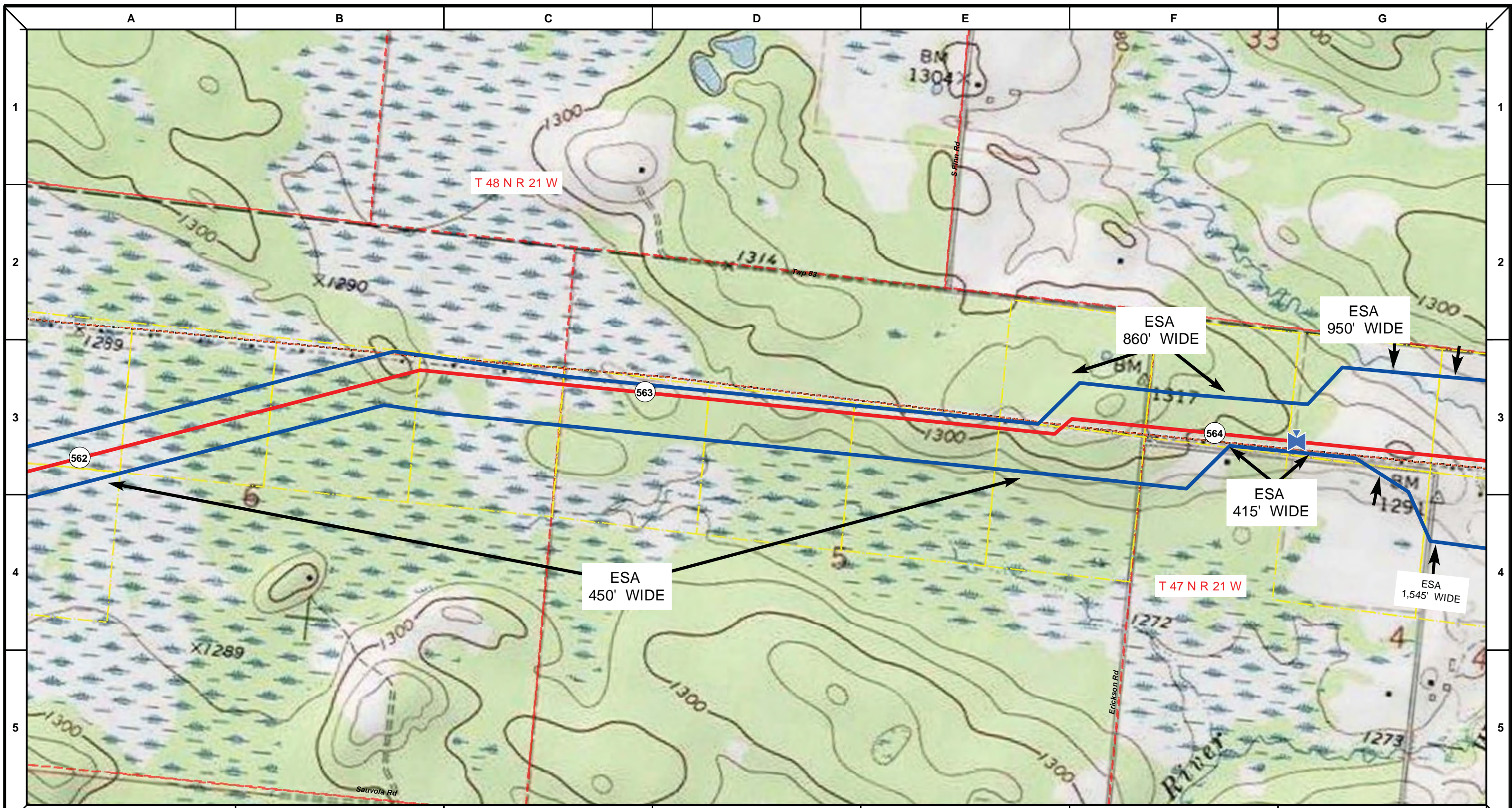
NORTH DAKOTA PIPELINE COMPANY LLC

**PROPOSED SANDPIPER PIPELINE PROJECT**  
 ROUTE MAP  
 Carlton County, MN

DRAWN: MLB	CHECKED: --
DATE: Jan 30, 2014	SCALE: AS SHOWN

Spread: 8 Map: 108 of 123





Proposed Pipeline - Sandpiper	Milepost - Sandpiper	Tract Boundary
Existing Enbridge Pipelines	Potential Block Valve	Facility Boundary
Foreign Pipes	Environmental Survey Area (ESA)	Previously Sited Facility Boundary
Transmission Lines		Section Lines
SPREAD BREAK		

500 250 0 500 1,000 Feet

DRAWN	CHECKED	APPROVED	DATE	REV NO.	DESCRIPTION
			1/29/14	2	PUC Update - Revision D-2 Alignment
			12/19/13	1	PUC Update - Revision D Alignment
			10/10/13	0	PUC Submittal

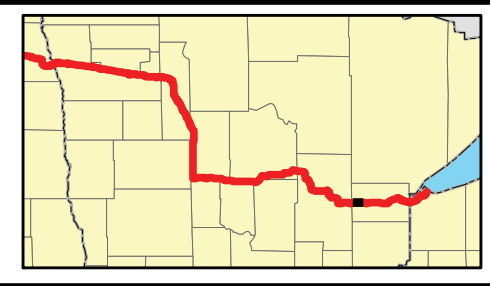
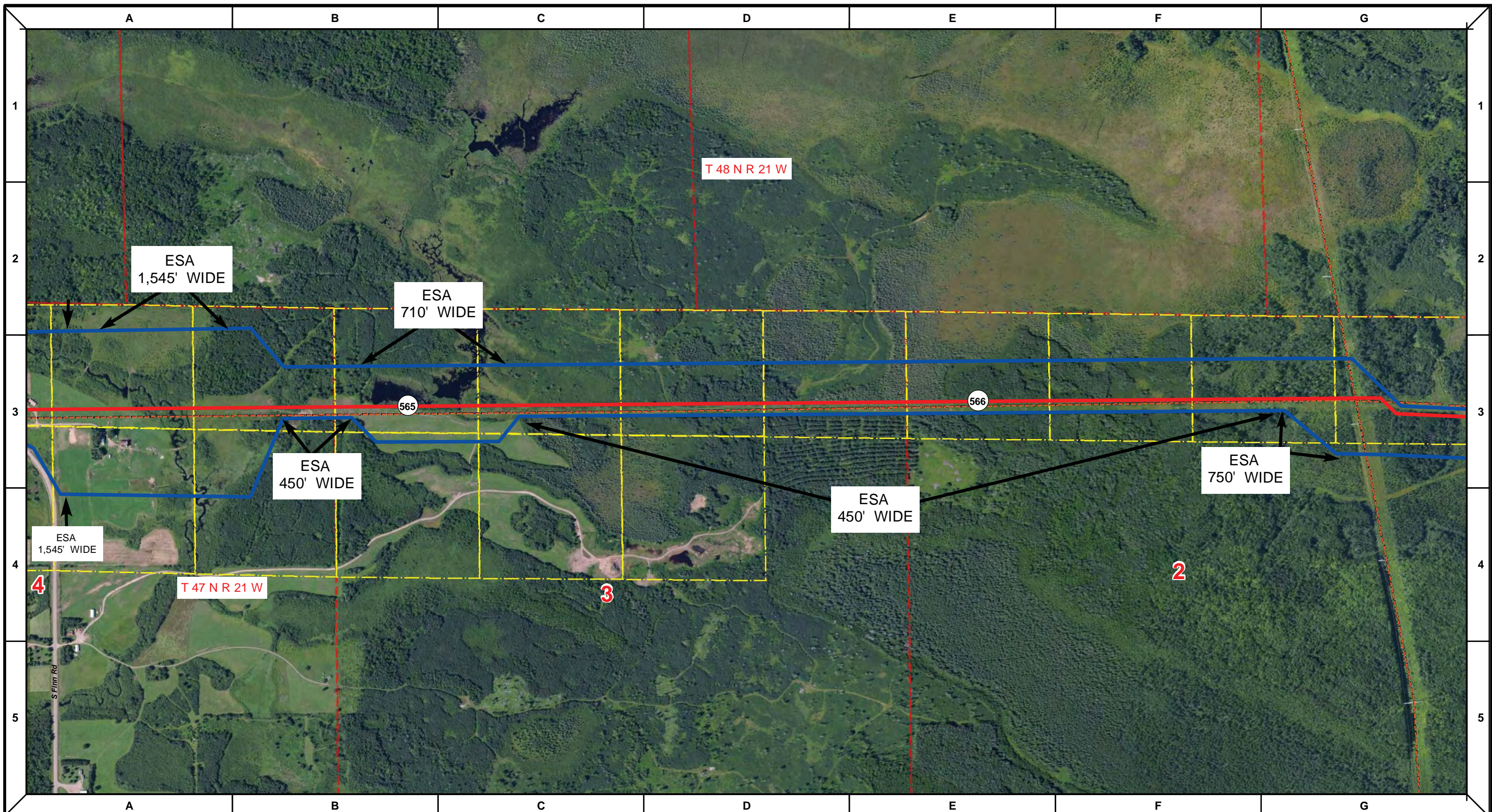
NORTH DAKOTA PIPELINE COMPANY LLC

**PROPOSED SANDPIPER PIPELINE PROJECT**  
 ROUTE MAP  
 Carlton County, MN

DRAWN: <b>MLB</b>	CHECKED: <b>--</b>
DATE: <b>Jan 30, 2014</b>	SCALE: <b>AS SHOWN</b>

Spread: 8 Map: 108 of 123





Proposed Pipeline - Sandpiper	Milepost - Sandpiper	Tract Boundary
Existing Enbridge Pipelines	Potential Block Valve	Facility Boundary
Foreign Pipes	Environmental Survey Area (ESA)	Previously Sited Facility Boundary
Transmission Lines		Section Lines
SPREAD BREAK		

DRAWN	CHECKED	APPROVED	DATE	REV NO.	DESCRIPTION
			1/29/14	2	PUC Update - Revision D-2 Alignment
			12/19/13	1	PUC Update - Revision D Alignment
			10/10/13	0	PUC Submittal

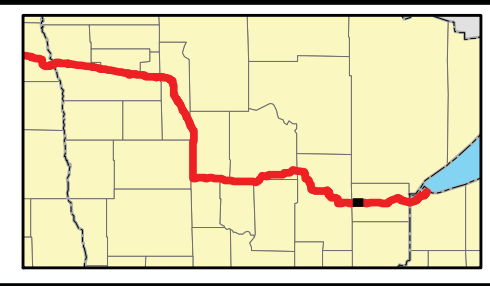
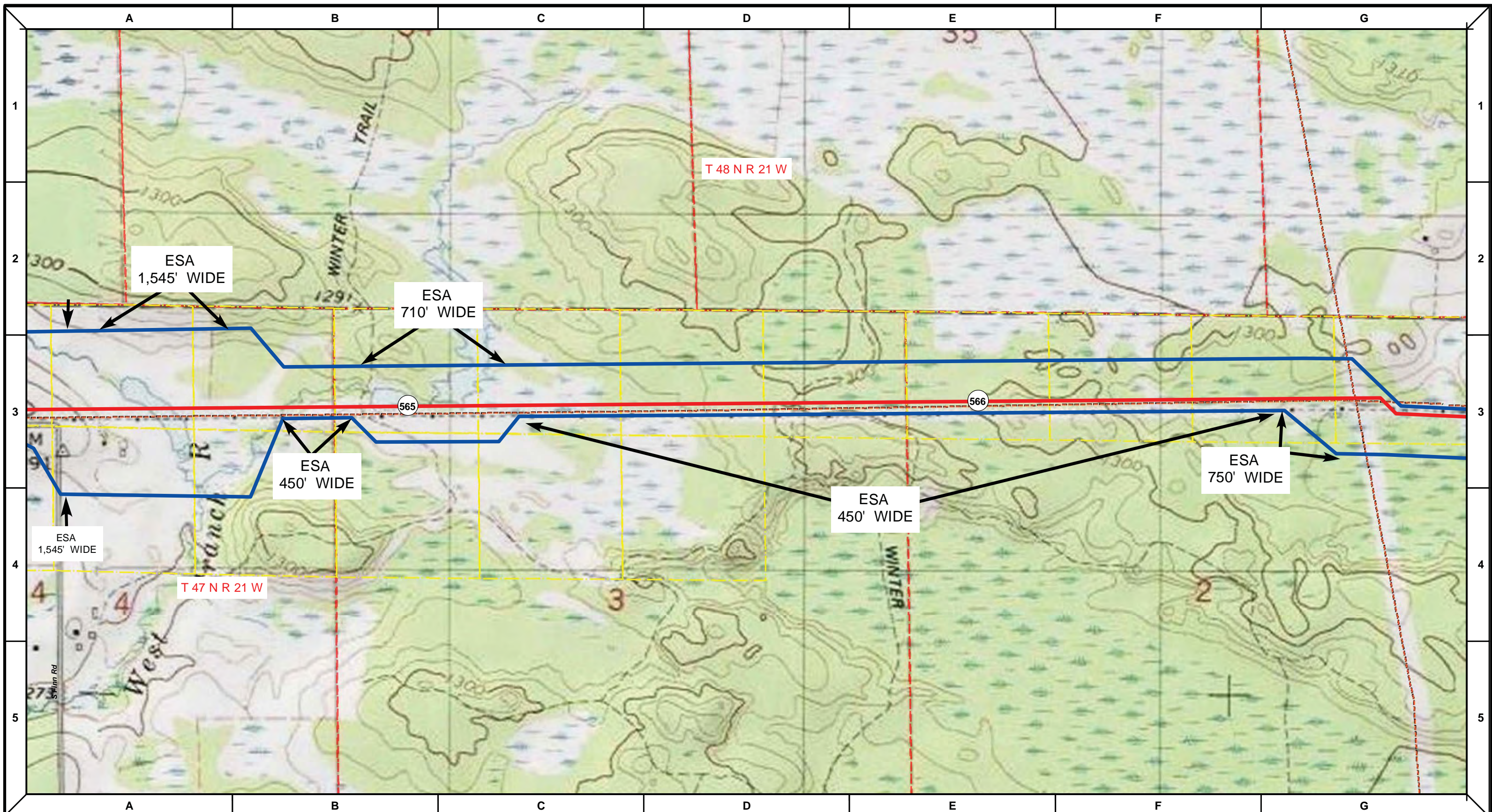
NORTH DAKOTA PIPELINE COMPANY LLC

**PROPOSED SANDPIPER PIPELINE PROJECT**  
**ROUTE MAP**  
 Carlton County, MN

DRAWN: <i>MLB</i>	CHECKED: --
DATE: Jan 30, 2014	SCALE: AS SHOWN

Spread:8 Map: 109 of 123





Proposed Pipeline - Sandpiper	Milepost - Sandpiper	Tract Boundary
Existing Enbridge Pipelines	Potential Block Valve	Facility Boundary
Foreign Pipes	Environmental Survey Area (ESA)	Previously Sited Facility Boundary
Transmission Lines		Section Lines
SPREAD BREAK		

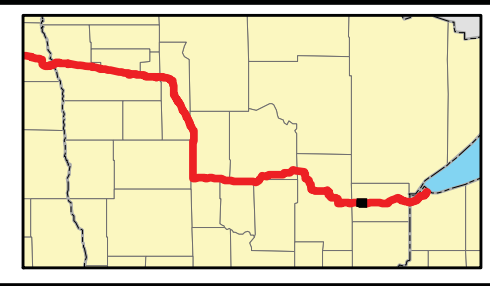
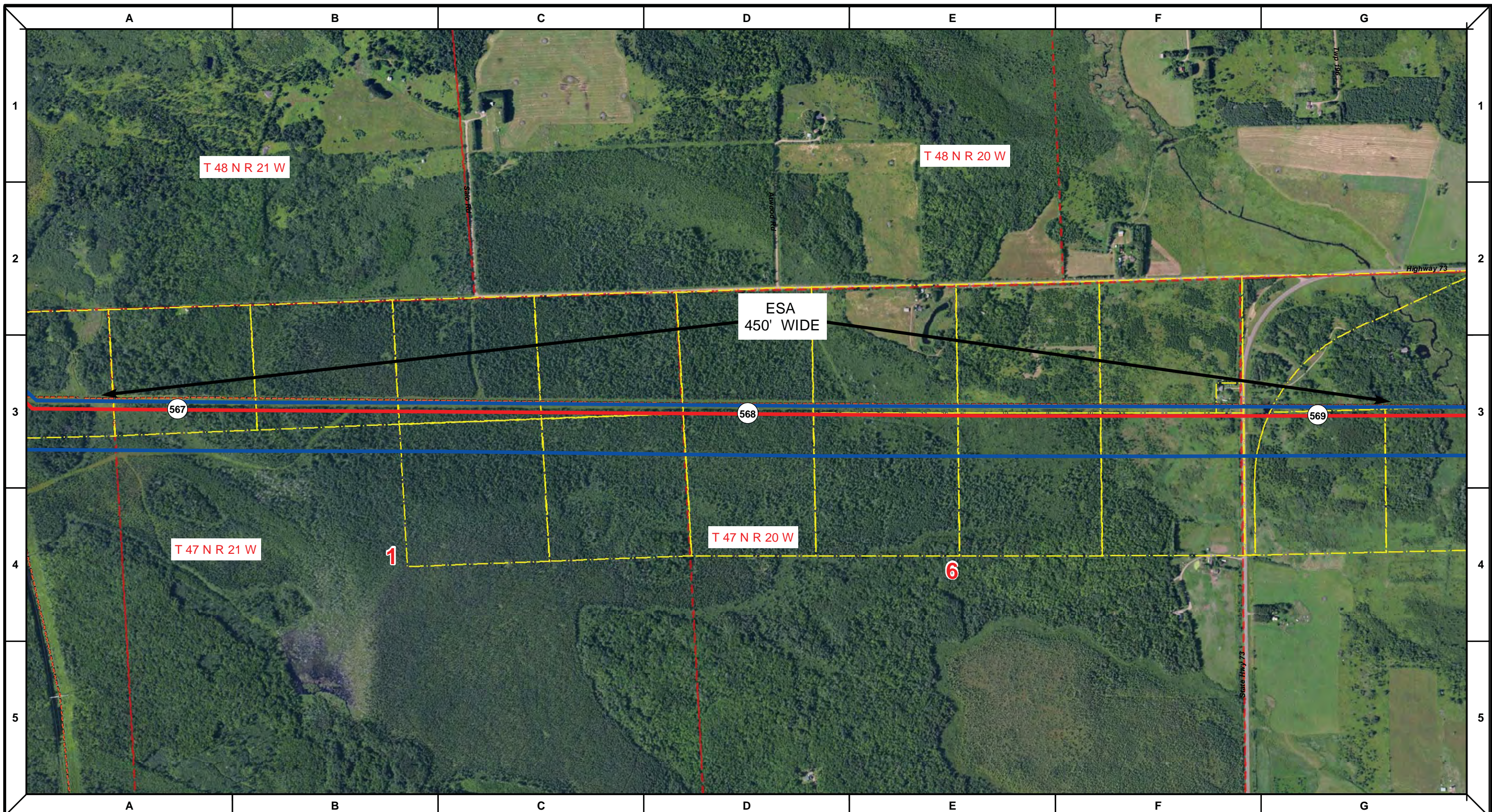
DRAWN	CHECKED	APPROVED	DATE	REV NO.	DESCRIPTION
			1/29/14	2	PUC Update - Revision D-2 Alignment
			12/19/13	1	PUC Update - Revision D Alignment
			10/10/13	0	PUC Submittal

NORTH DAKOTA PIPELINE COMPANY LLC  
**PROPOSED SANDPIPER PIPELINE PROJECT**  
 ROUTE MAP  
 Carlton County, MN

DRAWN: <b>MLB</b>	CHECKED: <b>--</b>
DATE: <b>Jan 30, 2014</b>	SCALE: <b>AS SHOWN</b>

Spread: 8      Map: 109 of 123





Proposed Pipeline - Sandpiper	Milepost - Sandpiper	Tract Boundary
Existing Enbridge Pipelines	Potential Block Valve	Facility Boundary
Foreign Pipes	Environmental Survey Area (ESA)	Previously Sited Facility Boundary
Transmission Lines		Section Lines
SPREAD BREAK		

DRAWN	CHECKED	APPROVED	DATE	REV NO.	DESCRIPTION
			1/29/14	2	PUC Update - Revision D-2 Alignment
			12/19/13	1	PUC Update - Revision D Alignment
			10/10/13	0	PUC Submittal

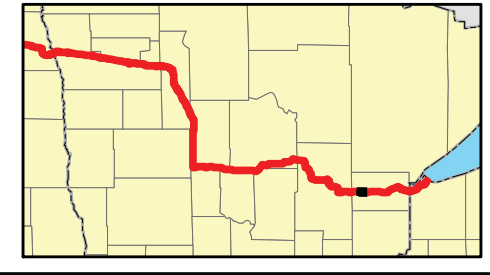
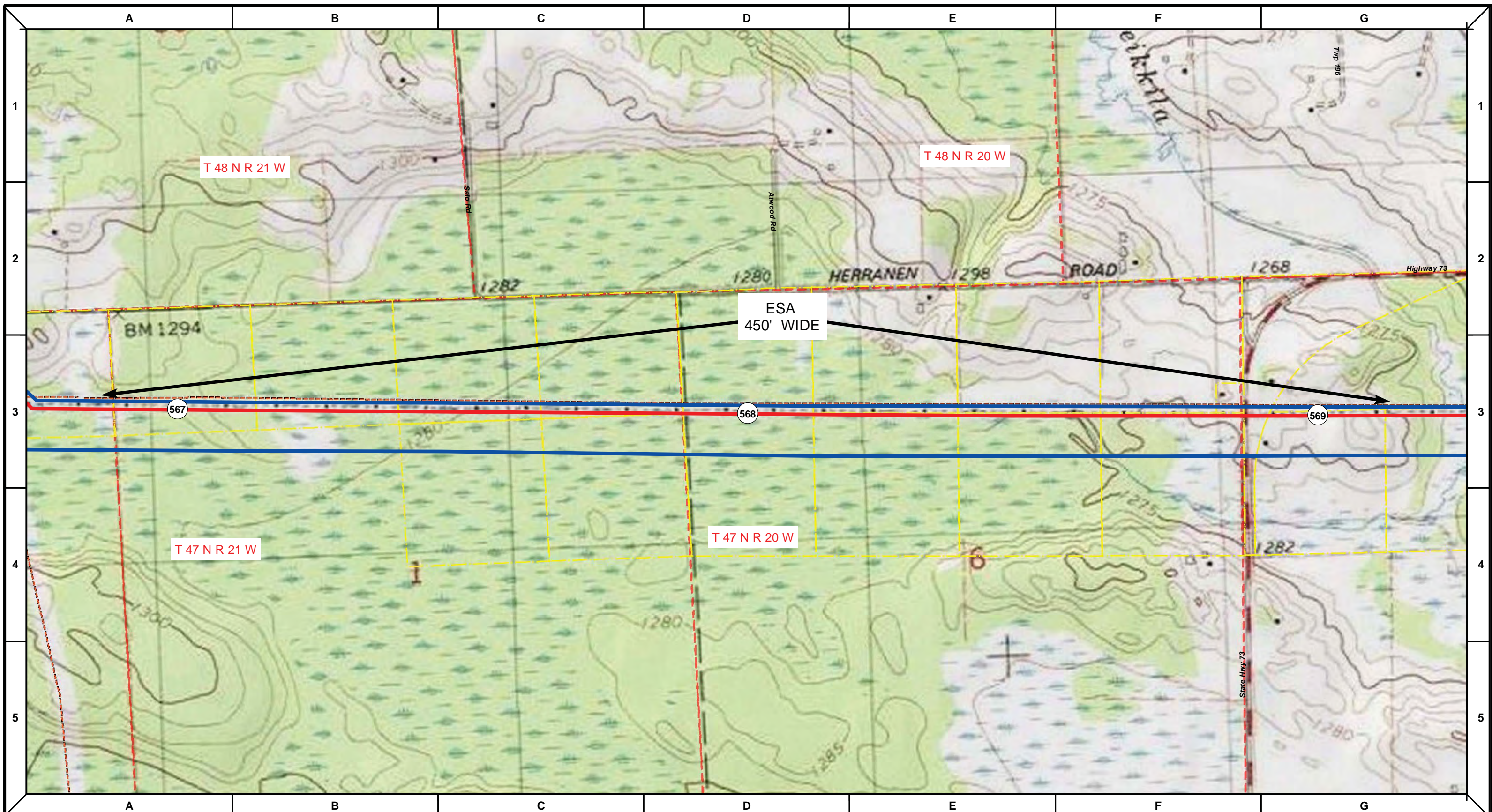
NORTH DAKOTA PIPELINE COMPANY LLC

**PROPOSED SANDPIPER PIPELINE PROJECT**  
**ROUTE MAP**  
 Carlton County, MN

DRAWN: <i>MLB</i>	CHECKED: --
DATE: Jan 30, 2014	SCALE: AS SHOWN

Spread:8      Map: 110 of 123





Proposed Pipeline - Sandpiper	Existing Enbridge Pipelines	Foreign Pipes	Transmission Lines	SPREAD BREAK	Milepost - Sandpiper	Potential Block Valve	Environmental Survey Area (ESA)	Tract Boundary	Facility Boundary	Previously Sited Facility Boundary	Section Lines
-------------------------------	-----------------------------	---------------	--------------------	--------------	----------------------	-----------------------	---------------------------------	----------------	-------------------	------------------------------------	---------------

DRAWN	CHECKED	APPROVED	DATE	REV NO.	DESCRIPTION
			1/29/14	2	PUC Update - Revision D-2 Alignment
			12/19/13	1	PUC Update - Revision D Alignment
			10/10/13	0	PUC Submittal

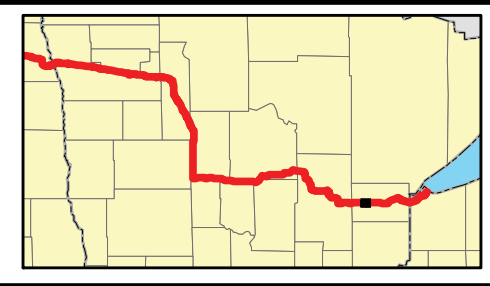
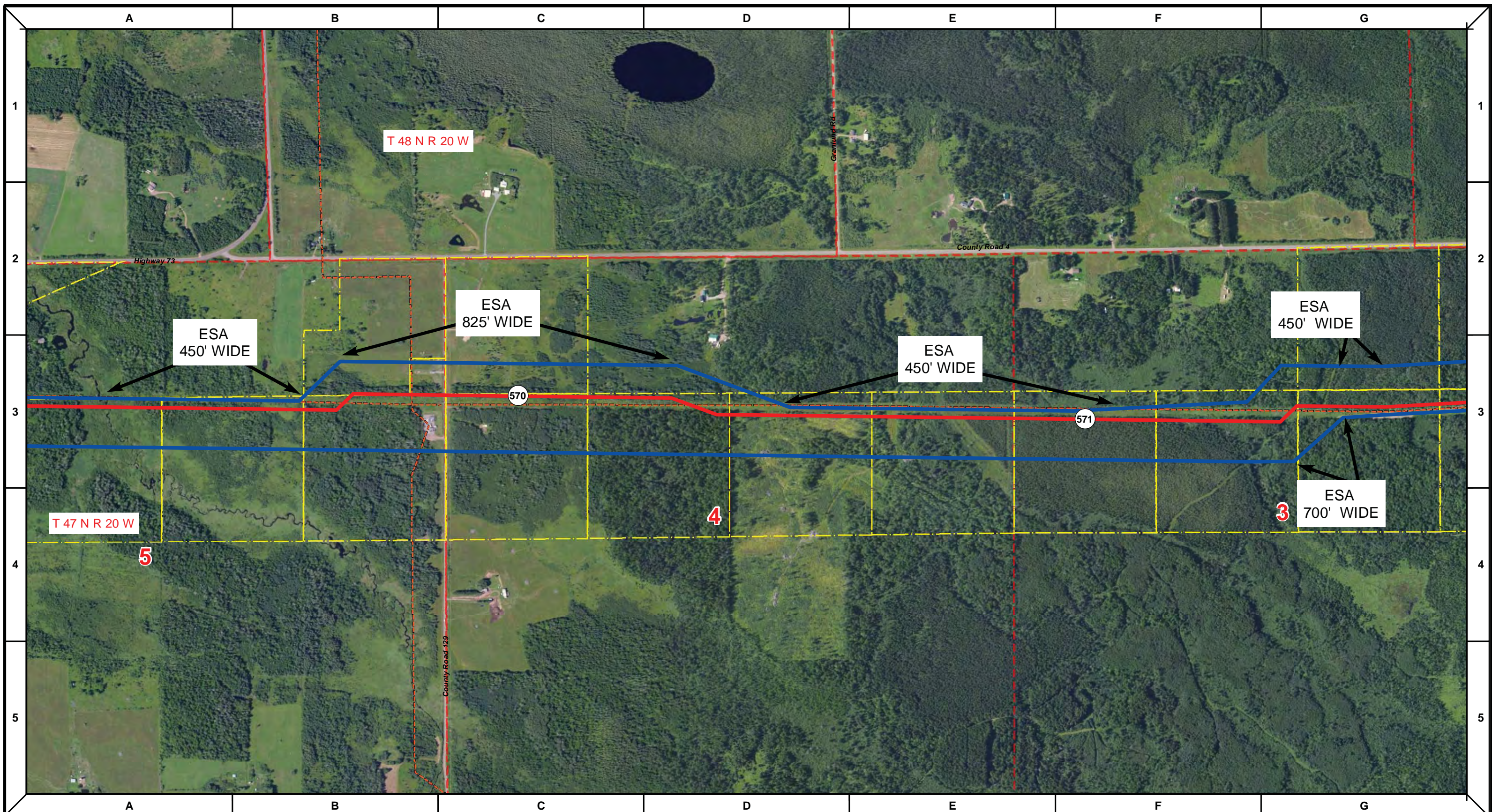
**ENBRIDGE**  
 NORTH DAKOTA PIPELINE COMPANY LLC

**PROPOSED SANDPIPER  
 PIPELINE PROJECT  
 ROUTE MAP  
 Carlton County, MN**

DRAWN: <b>MLB</b>	CHECKED: <b>--</b>
DATE: <b>Jan 30, 2014</b>	SCALE: <b>AS SHOWN</b>

Spread:8 Map: 110 of 123





Proposed Pipeline - Sandpiper	Milepost - Sandpiper	Tract Boundary
Existing Enbridge Pipelines	Potential Block Valve	Facility Boundary
Foreign Pipes	Environmental Survey Area (ESA)	Previously Sited Facility Boundary
Transmission Lines		Section Lines
SPREAD BREAK		

DRAWN	CHECKED	APPROVED	DATE	REV NO.	DESCRIPTION
			1/29/14	2	PUC Update - Revision D-2 Alignment
			12/19/13	1	PUC Update - Revision D Alignment
			10/10/13	0	PUC Submittal

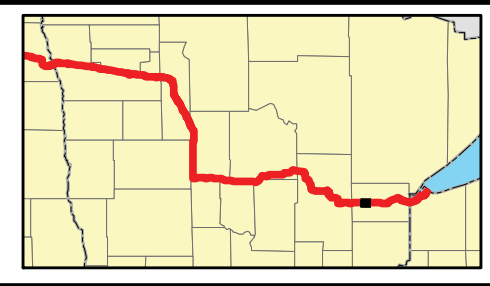
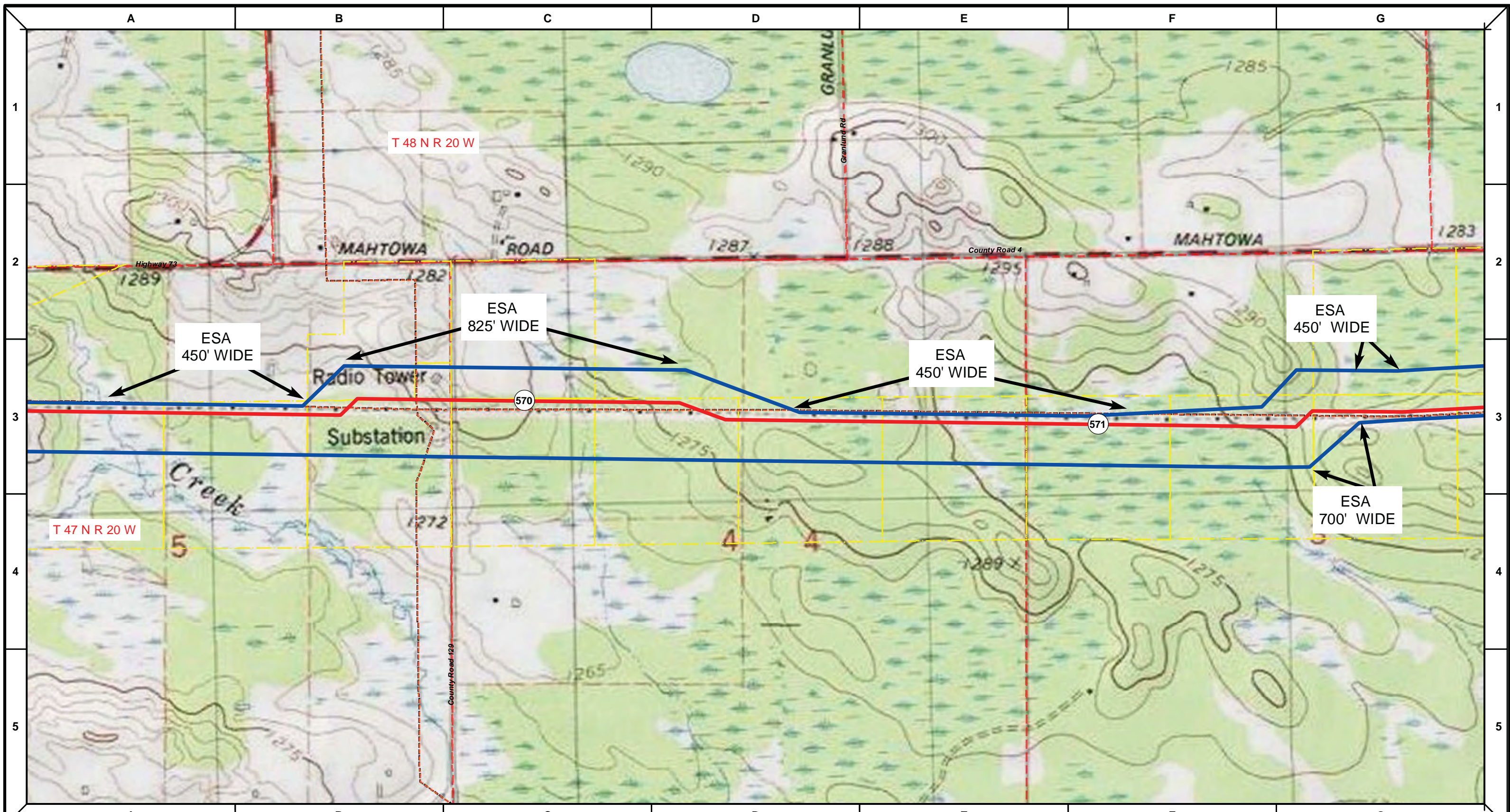
NORTH DAKOTA PIPELINE COMPANY LLC

**PROPOSED SANDPIPER PIPELINE PROJECT**  
 ROUTE MAP  
 Carlton County, MN

DRAWN: <i>MLB</i>	CHECKED: <i>--</i>
DATE: <i>Jan 30, 2014</i>	SCALE: <i>AS SHOWN</i>

Spread:8      Map: 111 of 123





Proposed Pipeline - Sandpiper	Milepost - Sandpiper	Tract Boundary
Existing Enbridge Pipelines	Potential Block Valve	Facility Boundary
Foreign Pipes	Environmental Survey Area (ESA)	Previously Sited Facility Boundary
Transmission Lines		Section Lines
SPREAD BREAK		

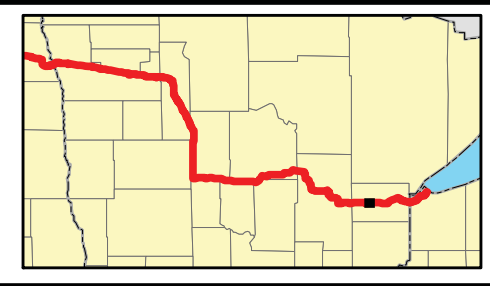
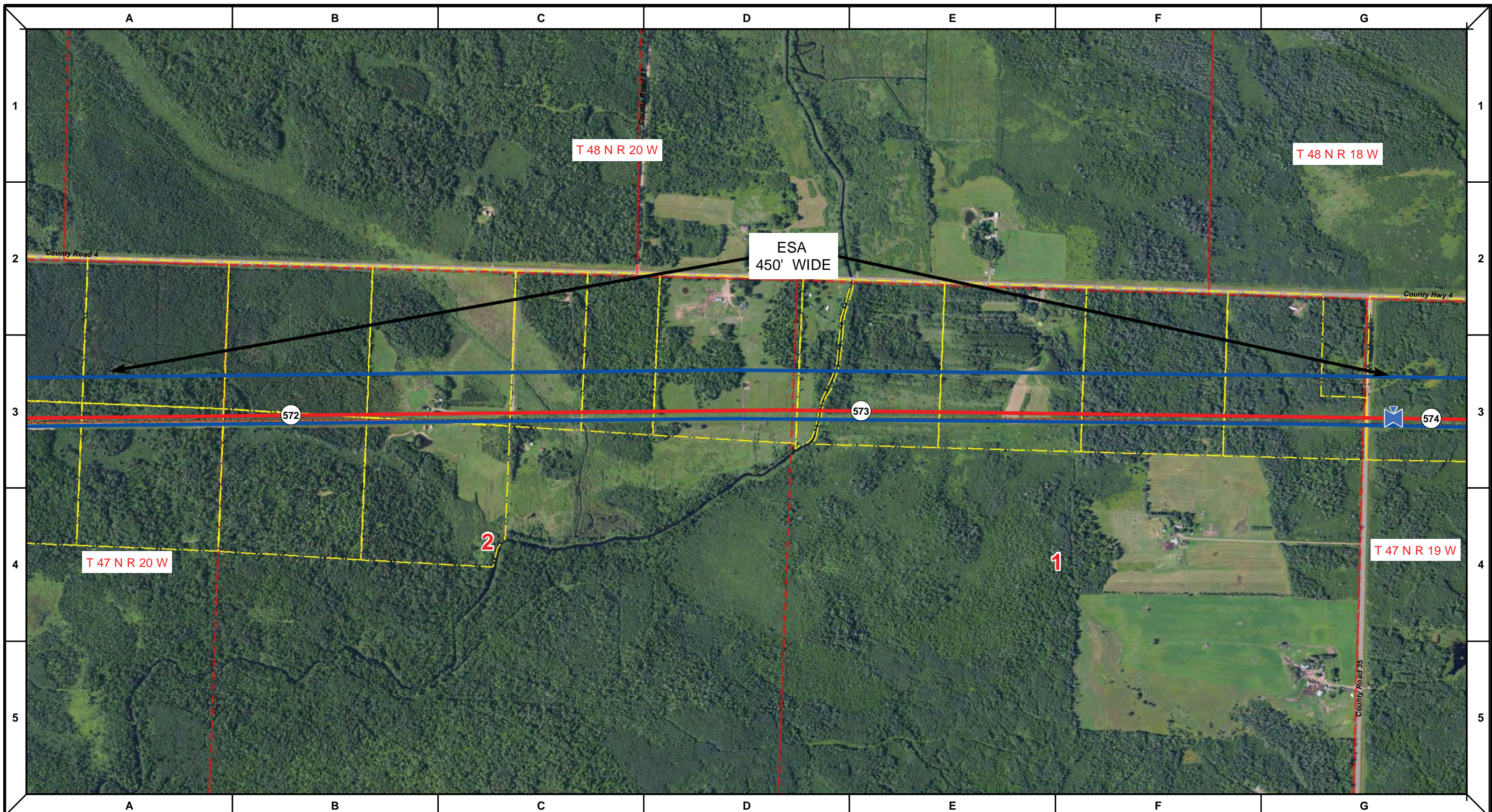
DRAWN	CHECKED	APPROVED	DATE	REV NO.	DESCRIPTION
			1/29/14	2	PUC Update - Revision D-2 Alignment
			12/19/13	1	PUC Update - Revision D Alignment
			10/10/13	0	PUC Submittal

NORTH DAKOTA PIPELINE COMPANY LLC  
**PROPOSED SANDPIPER PIPELINE PROJECT**  
 ROUTE MAP  
 Carlton County, MN

DRAWN: <b>MLB</b>	CHECKED: <b>--</b>
DATE: <b>Jan 30, 2014</b>	SCALE: <b>AS SHOWN</b>

Spread:8      Map: 111 of 123





Proposed Pipeline - Sandpiper	Milepost - Sandpiper	Tract Boundary
Existing Enbridge Pipelines	Potential Block Valve	Facility Boundary
Foreign Pipes	Environmental Survey Area (ESA)	Previously Sited Facility Boundary
Transmission Lines		Section Lines
SPREAD BREAK		

500 250 0 500 1,000 Feet

DRAWN	CHECKED	APPROVED	DATE	REV NO.	DESCRIPTION
			1/29/14	2	PUC Update - Revision D-2 Alignment
			12/19/13	1	PUC Update - Revision D Alignment
			10/10/13	0	PUC Submittal

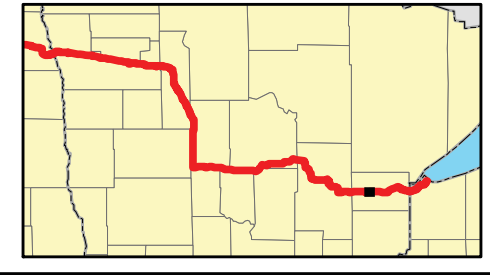
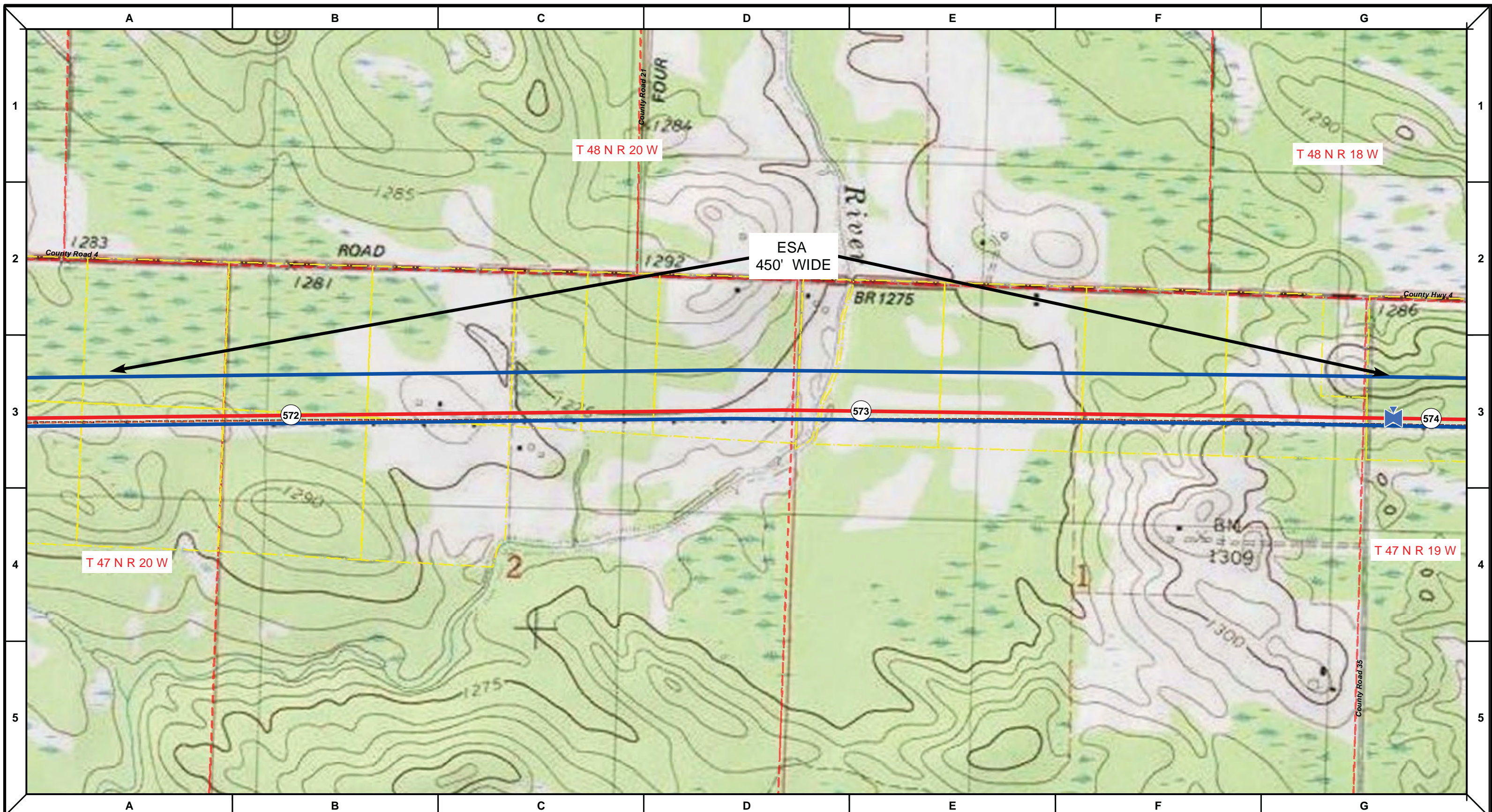
NORTH DAKOTA PIPELINE COMPANY LLC

**PROPOSED SANDPIPER  
 PIPELINE PROJECT  
 ROUTE MAP  
 Carlton County, MN**

DRAWN: <i>MLB</i>	CHECKED: --
DATE: Jan 30, 2014	SCALE: AS SHOWN

Spread:8 Map: 112 of 123





Proposed Pipeline - Sandpiper	Milepost - Sandpiper	Tract Boundary
Existing Enbridge Pipelines	Potential Block Valve	Facility Boundary
Foreign Pipes	Environmental Survey Area (ESA)	Previously Sited Facility Boundary
Transmission Lines		Section Lines
SPREAD BREAK		

500 250 0 500 1,000 Feet

MLB	DATE	REV. NO.	DESCRIPTION
	1/29/14	2	PUC Update - Revision D-2 Alignment
	12/19/13	1	PUC Update - Revision D Alignment
	10/10/13	0	PUC Submittal
DRAWN	CHECKED	APPROVED	DATE
			REV. NO.

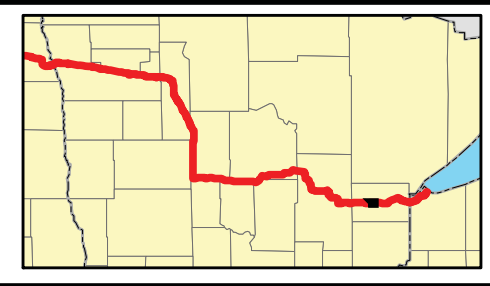
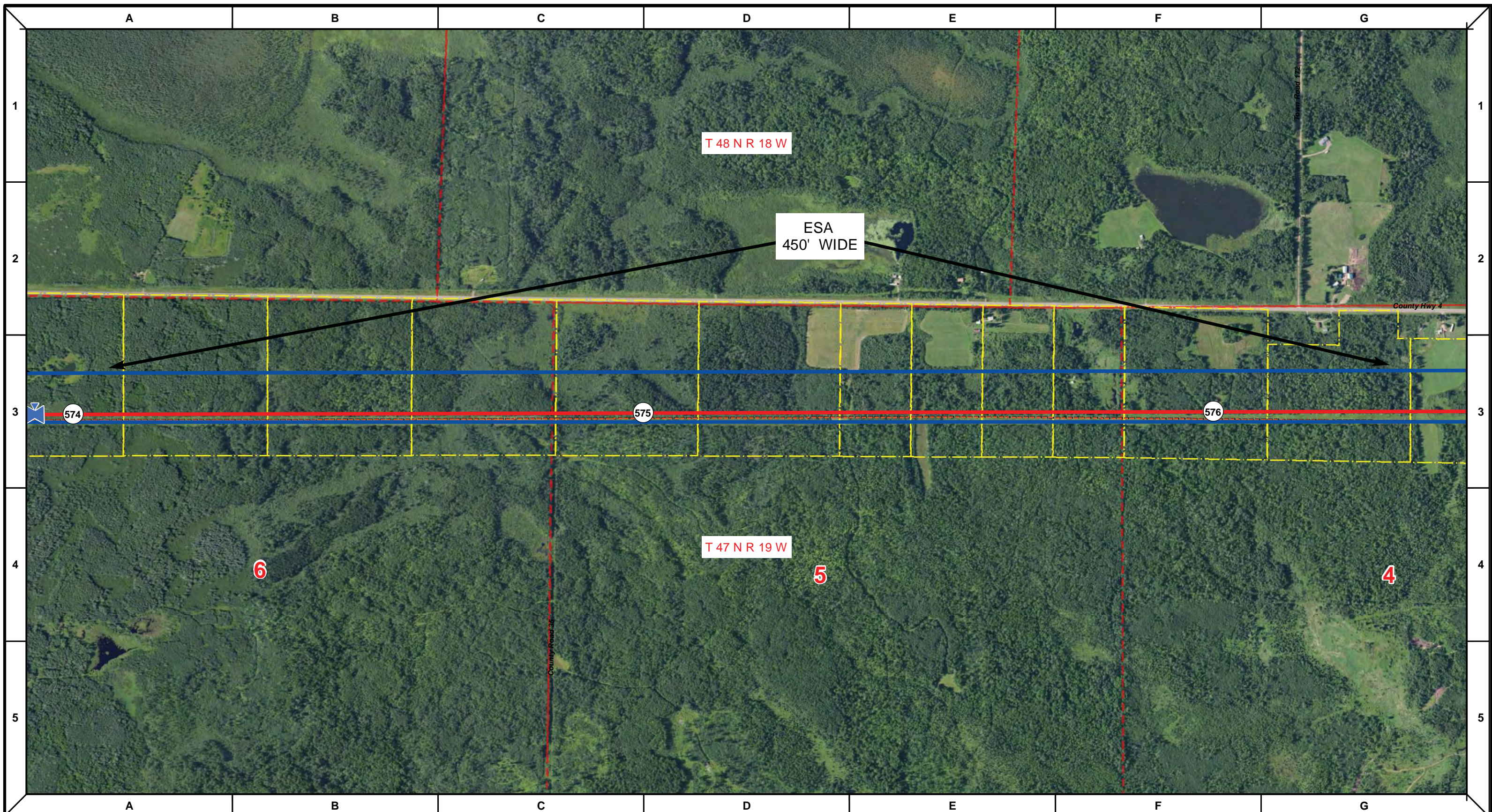
NORTH DAKOTA PIPELINE COMPANY LLC

**PROPOSED SANDPIPER  
 PIPELINE PROJECT  
 ROUTE MAP  
 Carlton County, MN**

DRAWN: <b>MLB</b>	CHECKED: <b>--</b>
DATE: <b>Jan 30, 2014</b>	SCALE: <b>AS SHOWN</b>

Spread:8 Map: 112 of 123





Proposed Pipeline - Sandpiper	Milepost - Sandpiper	Tract Boundary
Existing Enbridge Pipelines	Potential Block Valve	Facility Boundary
Foreign Pipes	Environmental Survey Area (ESA)	Previously Sited Facility Boundary
Transmission Lines		Section Lines
SPREAD BREAK		

DRAWN	CHECKED	APPROVED	DATE	REV NO.	DESCRIPTION
			1/29/14	2	PUC Update - Revision D-2 Alignment
			12/19/13	1	PUC Update - Revision D Alignment
			10/10/13	0	PUC Submittal

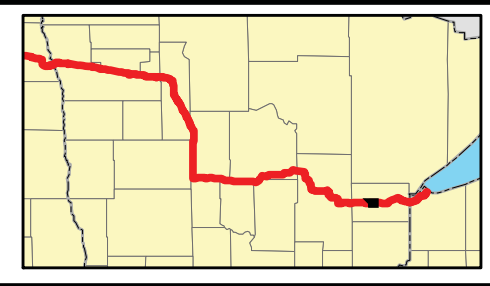
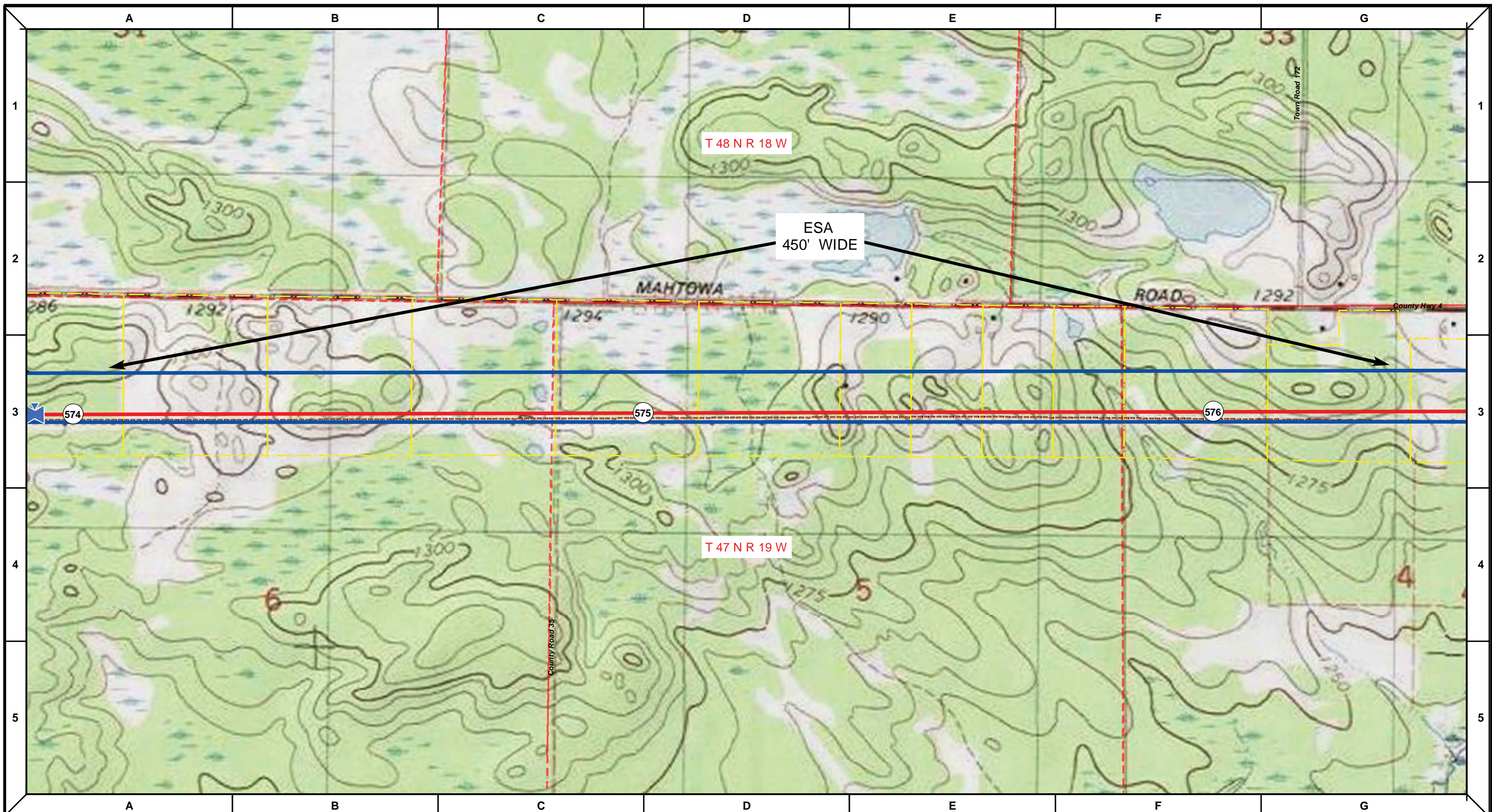
NORTH DAKOTA PIPELINE COMPANY LLC

**PROPOSED SANDPIPER PIPELINE PROJECT**  
**ROUTE MAP**  
 Carlton County, MN

DRAWN: <i>MLB</i>	CHECKED: --
DATE: Jan 30, 2014	SCALE: AS SHOWN

Spread:8 Map: 113 of 123





Proposed Pipeline - Sandpiper	Milepost - Sandpiper	Tract Boundary
Existing Enbridge Pipelines	Potential Block Valve	Facility Boundary
Foreign Pipes	Environmental Survey Area (ESA)	Previously Sited Facility Boundary
Transmission Lines		Section Lines
SPREAD BREAK		

500 250 0 500 1,000 Feet

DRAWN	CHECKED	APPROVED	DATE	REV NO.	DESCRIPTION
			1/29/14	2	PUC Update - Revision D-2 Alignment
			12/19/13	1	PUC Update - Revision D Alignment
			10/10/13	0	PUC Submittal

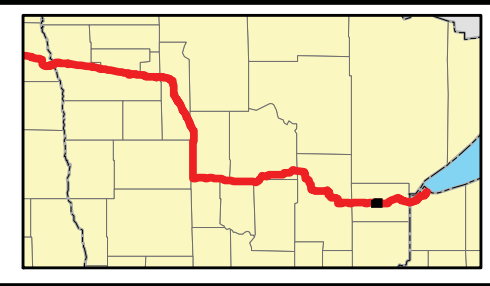
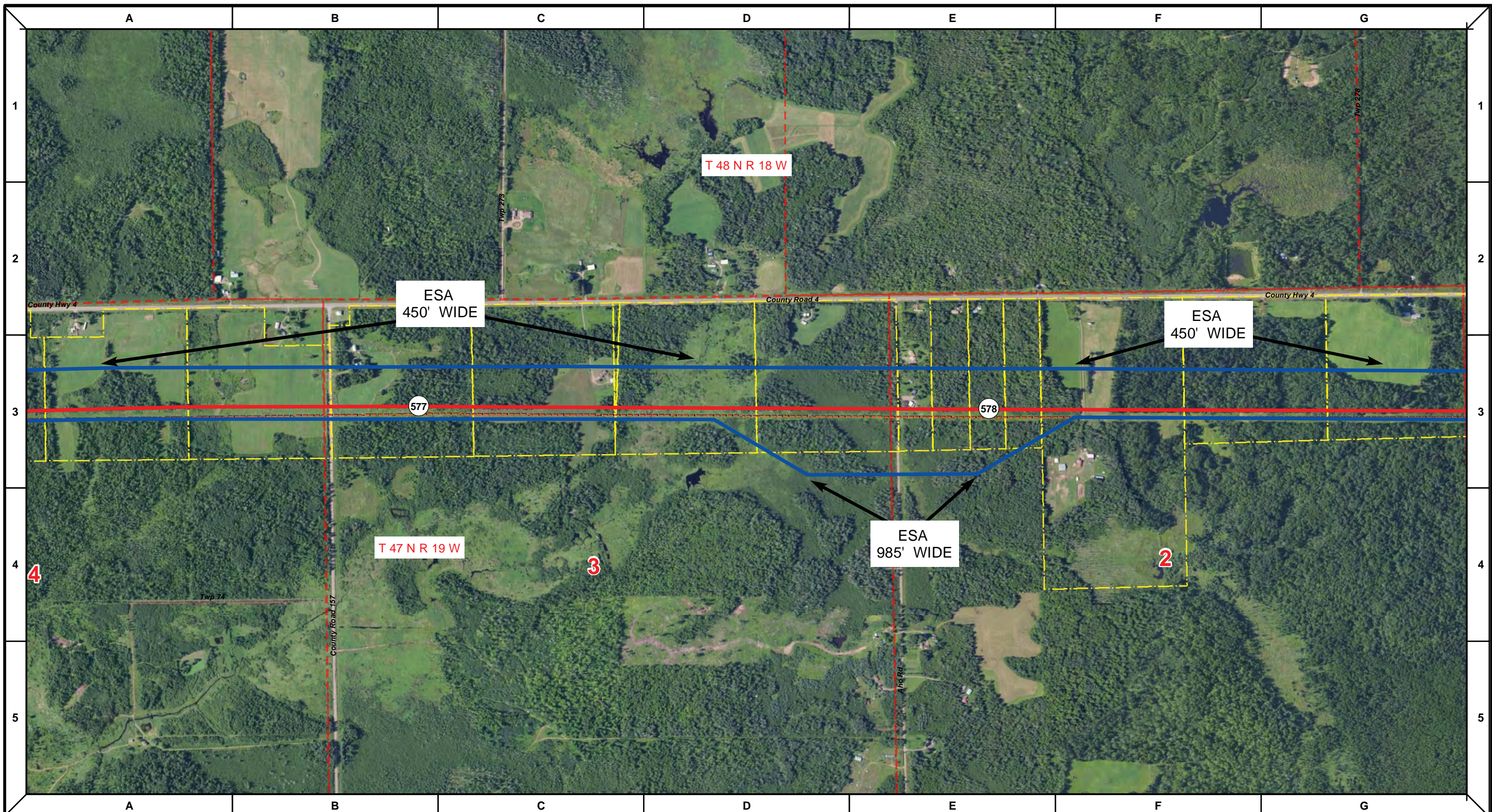
NORTH DAKOTA PIPELINE COMPANY LLC

**PROPOSED SANDPIPER PIPELINE PROJECT**  
 ROUTE MAP  
 Carlton County, MN

DRAWN: <b>MLB</b>	CHECKED: <b>--</b>
DATE: <b>Jan 30, 2014</b>	SCALE: <b>AS SHOWN</b>

Spread:8      Map: 113 of 123





Proposed Pipeline - Sandpiper	Milepost - Sandpiper	Tract Boundary
Existing Enbridge Pipelines	Potential Block Valve	Facility Boundary
Foreign Pipes	Environmental Survey Area (ESA)	Previously Sited Facility Boundary
Transmission Lines		Section Lines
SPREAD BREAK		

500 250 0 500 1,000 Feet

DRAWN	CHECKED	APPROVED	DATE	REV NO.	DESCRIPTION
			1/29/14	2	PUC Update - Revision D-2 Alignment
			12/19/13	1	PUC Update - Revision D Alignment
			10/10/13	0	PUC Submittal

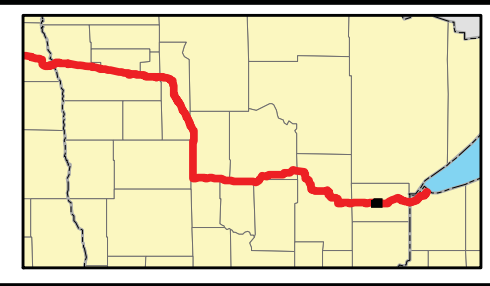
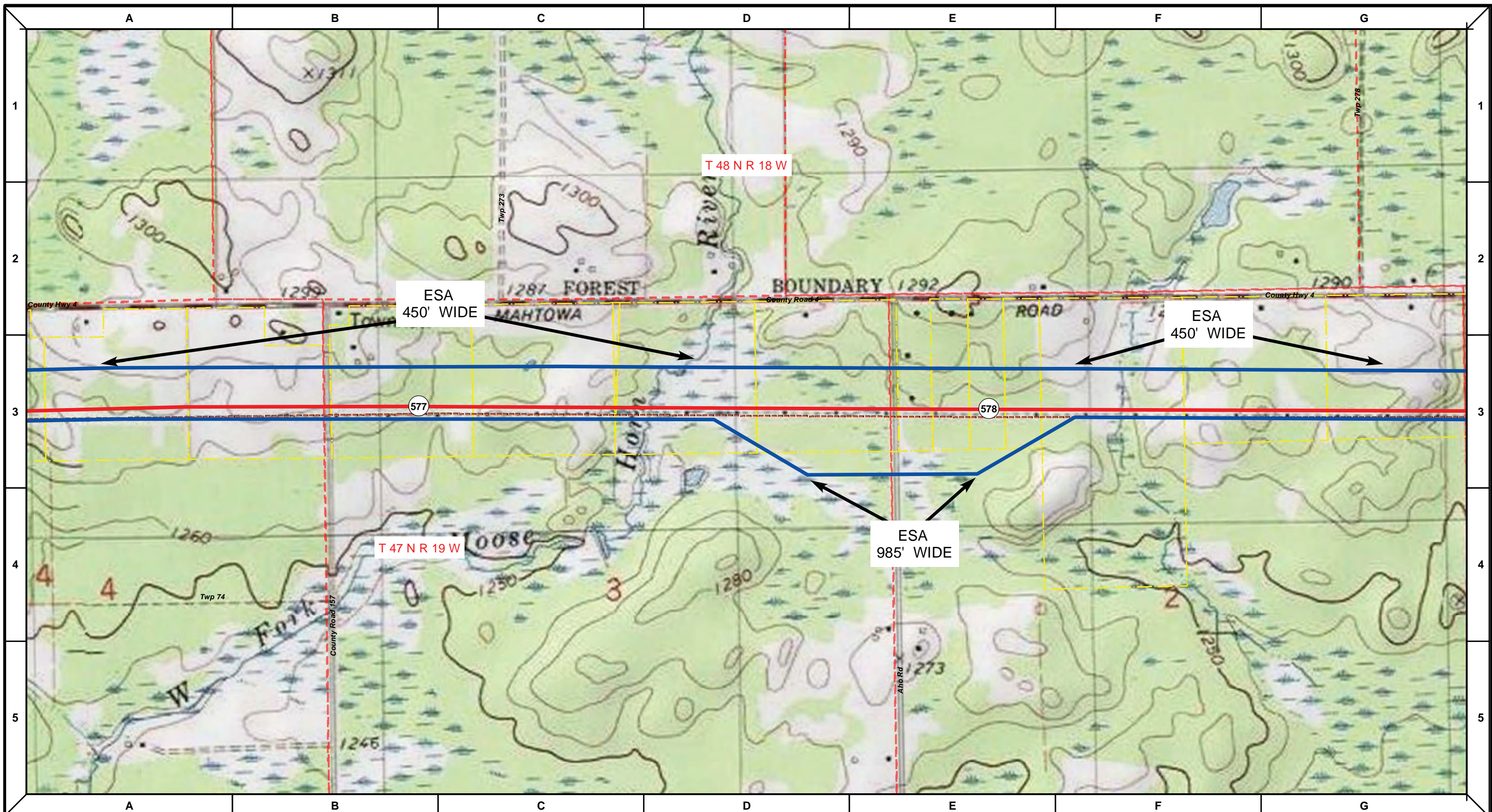
NORTH DAKOTA PIPELINE COMPANY LLC

**PROPOSED SANDPIPER  
 PIPELINE PROJECT  
 ROUTE MAP  
 Carlton County, MN**

<small>DRAWN:</small> MLB	<small>CHECKED:</small> --
<small>DATE:</small> Jan 30, 2014	<small>SCALE:</small> AS SHOWN

Spread:8      Map: 114 of 123





Proposed Pipeline - Sandpiper	Milepost - Sandpiper	Tract Boundary
Existing Enbridge Pipelines	Potential Block Valve	Facility Boundary
Foreign Pipes	Environmental Survey Area (ESA)	Previously Sited Facility Boundary
Transmission Lines		Section Lines
SPREAD BREAK		

500 250 0 500 1,000 Feet

DRAWN	CHECKED	APPROVED	DATE	REV NO.	DESCRIPTION
			1/29/14	2	PUC Update - Revision D-2 Alignment
			12/19/13	1	PUC Update - Revision D Alignment
			10/10/13	0	PUC Submittal

NORTH DAKOTA PIPELINE COMPANY LLC

**PROPOSED SANDPIPER  
 PIPELINE PROJECT  
 ROUTE MAP  
 Carlton County, MN**

DRAWN: <b>MLB</b>	CHECKED: <b>--</b>
DATE: <b>Jan 30, 2014</b>	SCALE: <b>AS SHOWN</b>

Spread:8 Map: 114 of 123