

Proposed Pipeline - Sandpiper	Milepost - Sandpiper	Tract Boundary
Existing Enbridge Pipelines	Potential Block Valve	Facility Boundary
Foreign Pipes	Environmental Survey Area (ESA)	Previously Sited Facility Boundary
Transmission Lines		Section Lines
SPREAD BREAK		

500 250 0 500 1,000 Feet

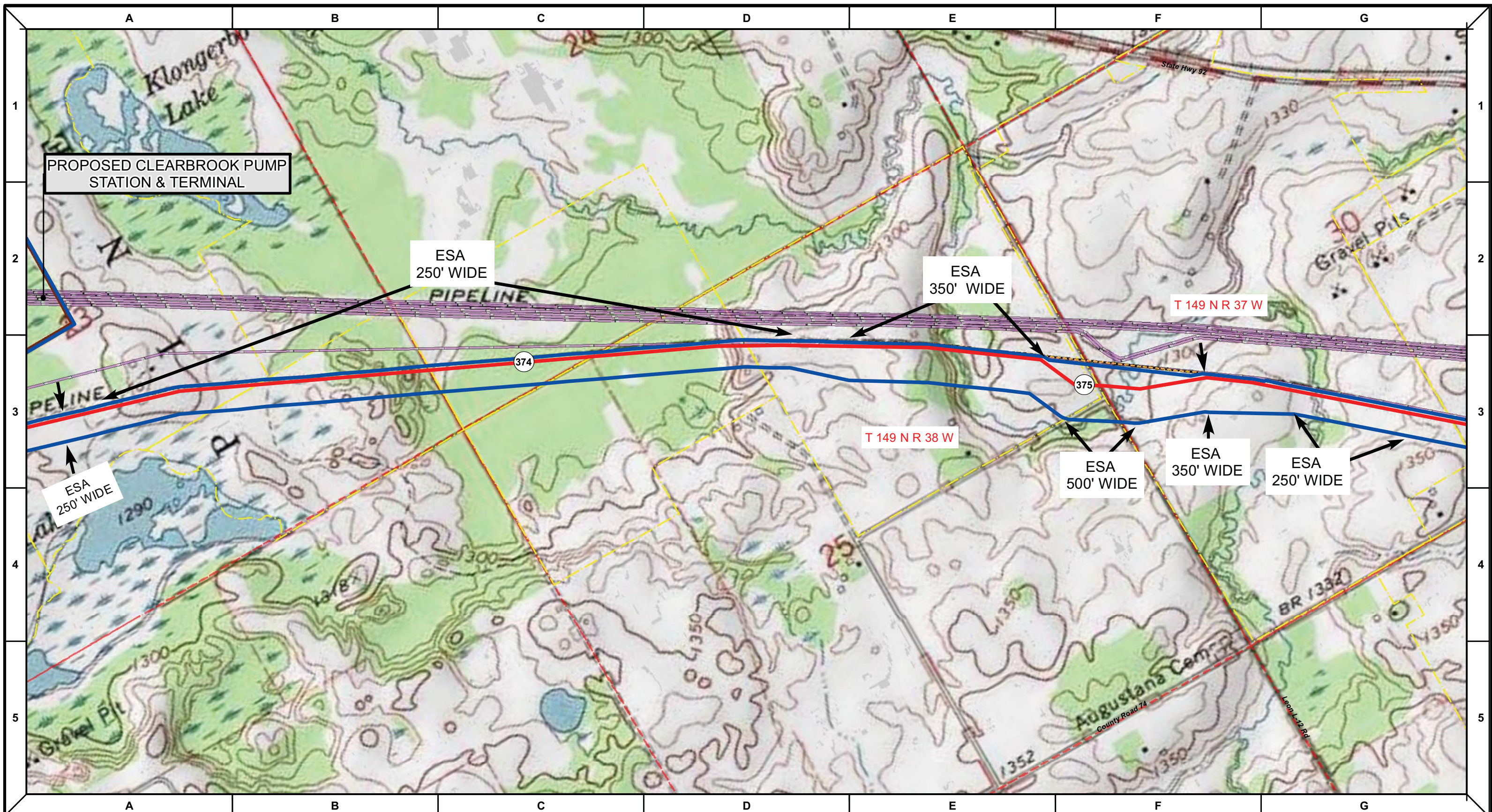
DRAWN	CHECKED	APPROVED	DATE	REV NO.	DESCRIPTION
			1/29/14	2	PUC Update - Revision D-2 Alignment
			12/19/13	1	PUC Update - Revision D Alignment
			10/10/13	0	PUC Submittal

ENBRIDGE
NORTH DAKOTA PIPELINE COMPANY LLC

PROPOSED SANDPIPER PIPELINE PROJECT ROUTE MAP
Clearwater County, MN

DRAWN: <i>MLB</i>	CHECKED: <i>-</i>
DATE: <i>Jan 30, 2014</i>	SCALE: <i>AS SHOWN</i>

Spread:5 Map: 32 of 123



PROPOSED CLEARBROOK PUMP STATION & TERMINAL

ESA 250' WIDE

ESA 350' WIDE

T 149 N R 37 W

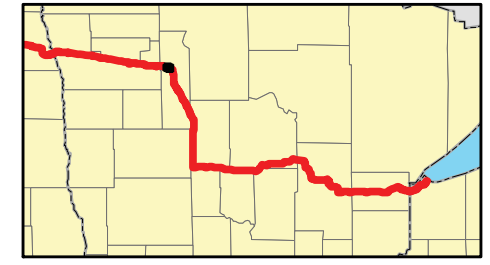
T 149 N R 38 W

ESA 500' WIDE

ESA 350' WIDE

ESA 250' WIDE

ESA 250' WIDE



- Proposed Pipeline - Sandpiper
- Existing Enbridge Pipelines
- Foreign Pipes
- - - Transmission Lines
- SPREAD BREAK
- 1 Milepost - Sandpiper
- ✕ Potential Block Valve
- Environmental Survey Area (ESA)
- Tract Boundary
- Facility Boundary
- Previously Sited Facility Boundary
- Section Lines



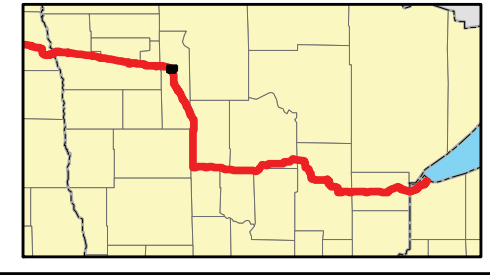
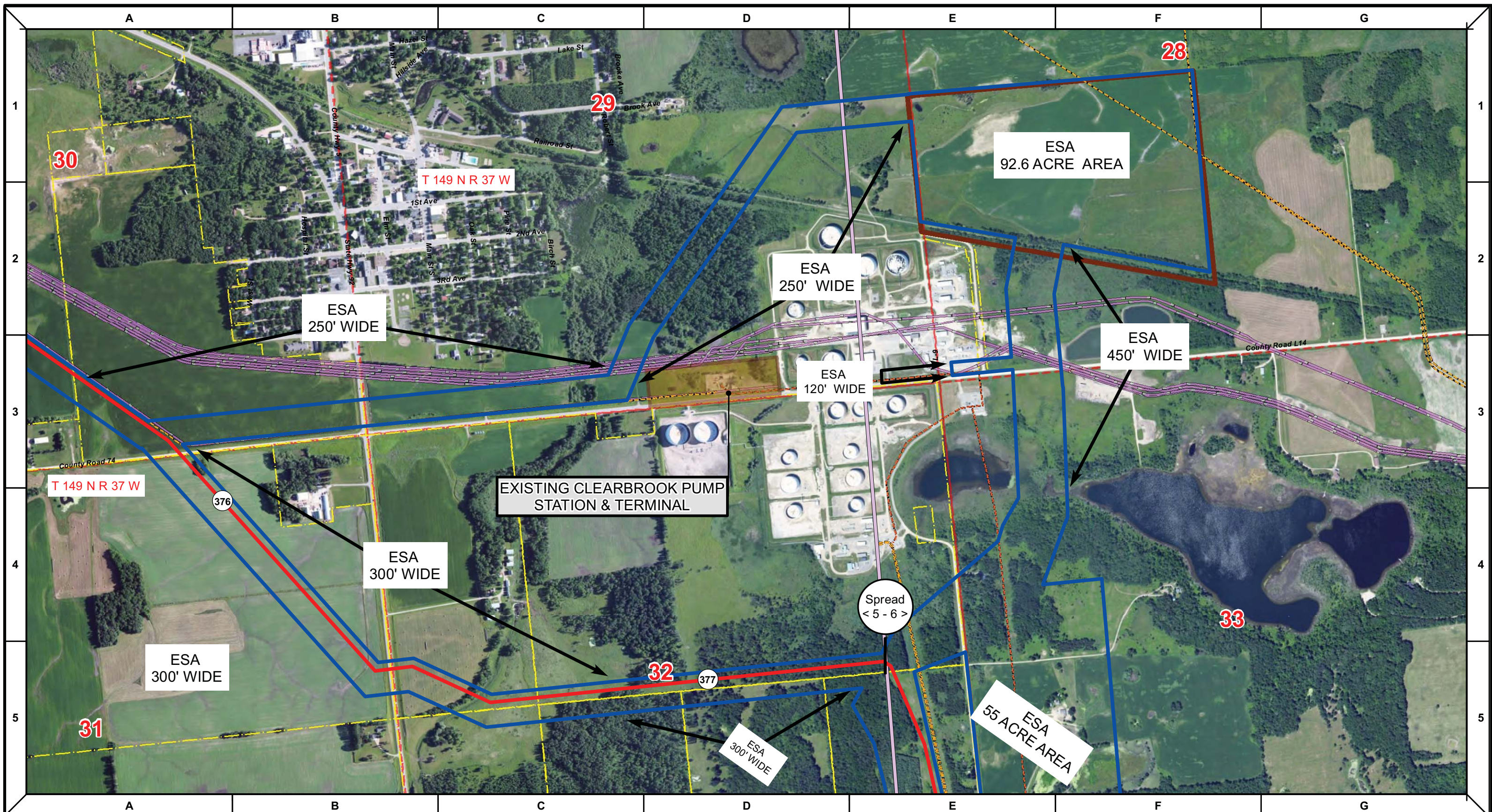
DRAWN	CHECKED	APPROVED	DATE	REV NO.	DESCRIPTION
			1/29/14	2	PUC Update - Revision D-2 Alignment
			12/19/13	1	PUC Update - Revision D Alignment
			10/10/13	0	PUC Submittal

ENBRIDGE
NORTH DAKOTA PIPELINE COMPANY LLC

PROPOSED SANDPIPER PIPELINE PROJECT ROUTE MAP
Clearwater County, MN

DRAWN: MLB	CHECKED: -
DATE: Jan 30, 2014	SCALE: AS SHOWN

Spread:5 Map: 32 of 123



Proposed Pipeline - Sandpiper	Milepost - Sandpiper	Tract Boundary
Existing Enbridge Pipelines	Potential Block Valve	Facility Boundary
Foreign Pipes	Environmental Survey Area (ESA)	Previously Sited Facility Boundary
Transmission Lines		Section Lines
SPREAD BREAK		

500 250 0 500 1,000 Feet

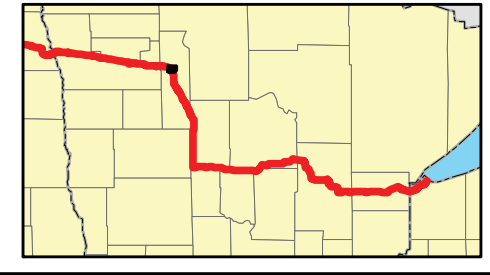
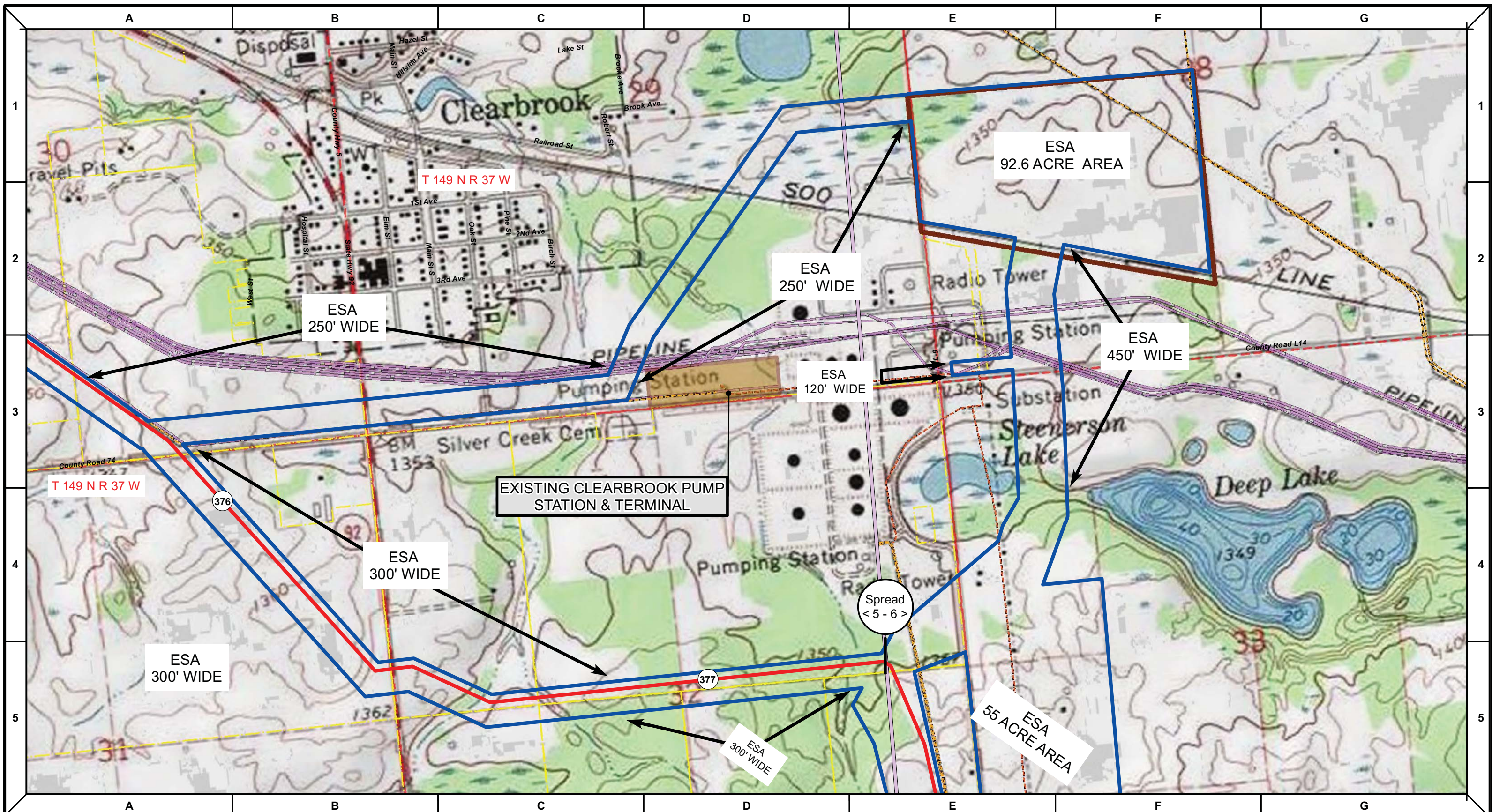
DRAWN	CHECKED	APPROVED	DATE	REV NO.	DESCRIPTION
			1/29/14	2	PUC Update - Revision D-2 Alignment
			12/19/13	1	PUC Update - Revision D Alignment
			10/10/13	0	PUC Submittal

ENBRIDGE
NORTH DAKOTA PIPELINE COMPANY LLC

**PROPOSED SANDPIPER
PIPELINE PROJECT
ROUTE MAP
Clearwater County, MN**

DRAWN: MLB	CHECKED: -
DATE: Jan 30, 2014	SCALE: AS SHOWN

Spread:5-6 Map: 33 of 123



	Proposed Pipeline - Sandpiper		Milepost - Sandpiper		Tract Boundary
	Existing Enbridge Pipelines		Potential Block Valve		Facility Boundary
	Foreign Pipes		Environmental Survey Area (ESA)		Previously Sited Facility Boundary
	Transmission Lines				Section Lines
	SPREAD BREAK				

500 250 0 500 1,000 Feet

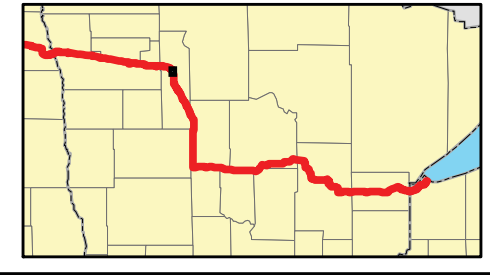
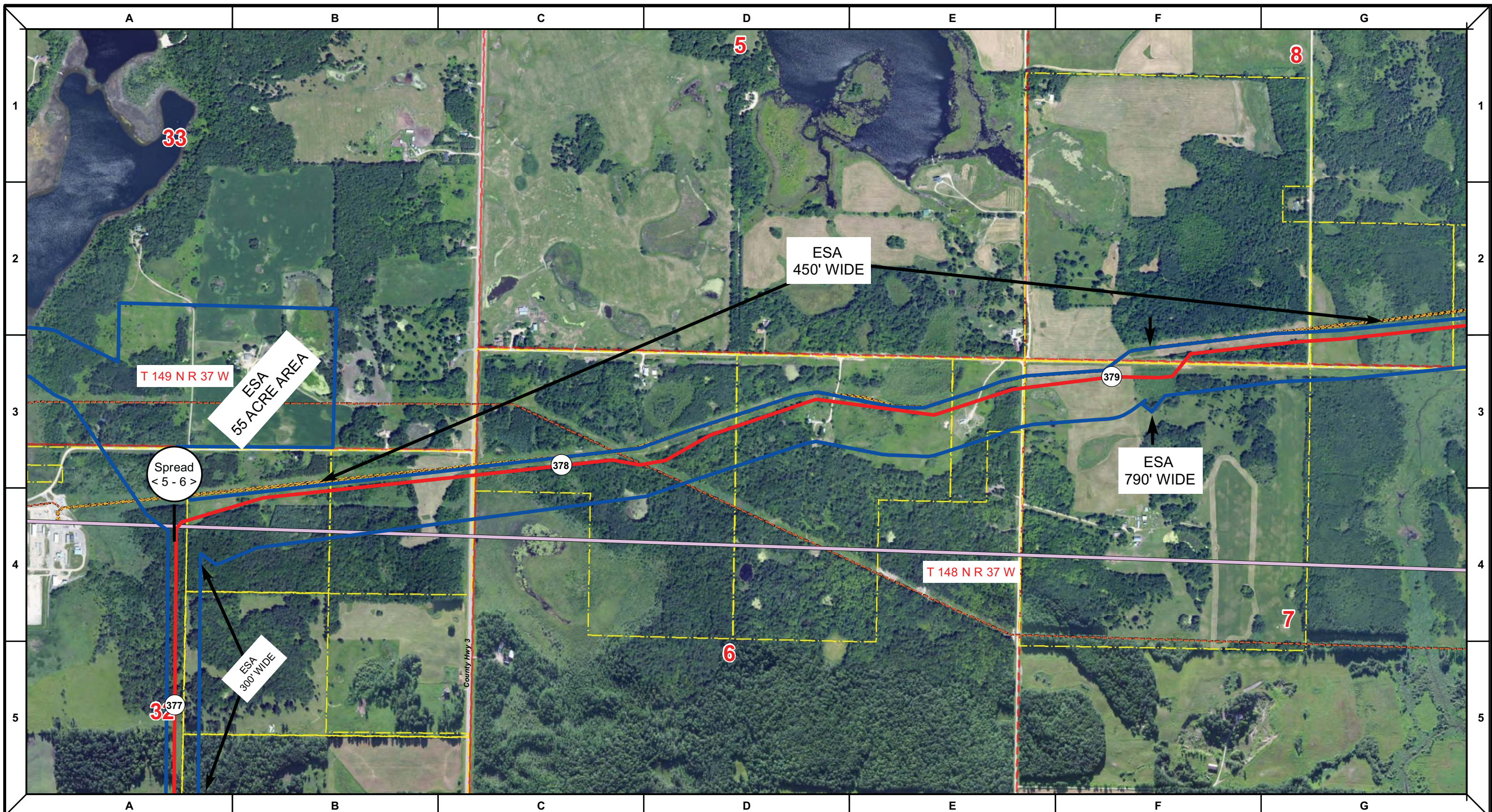
DRAWN	CHECKED	APPROVED	DATE	REV NO.	DESCRIPTION
MLB			1/29/14	2	PUC Update - Revision D-2 Alignment
MLB			12/19/13	1	PUC Update - Revision D Alignment
MLB			10/10/13	0	PUC Submittal

ENBRIDGE
NORTH DAKOTA PIPELINE COMPANY LLC

PROPOSED SANDPIPER PIPELINE PROJECT ROUTE MAP
Clearwater County, MN

DRAWN: MLB	CHECKED: --
DATE: Jan 30, 2014	SCALE: AS SHOWN

Spread:5-6 Map: 33 of 123



Proposed Pipeline - Sandpiper	Milepost - Sandpiper	Tract Boundary
Existing Enbridge Pipelines	Potential Block Valve	Facility Boundary
Foreign Pipes	Environmental Survey Area (ESA)	Previously Sited Facility Boundary
Transmission Lines	Section Lines	
SPREAD BREAK		

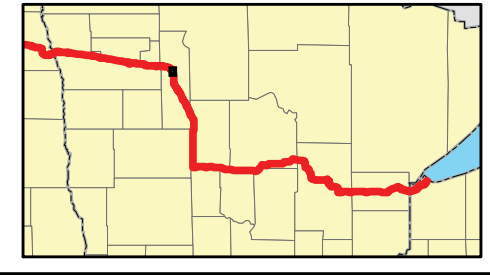
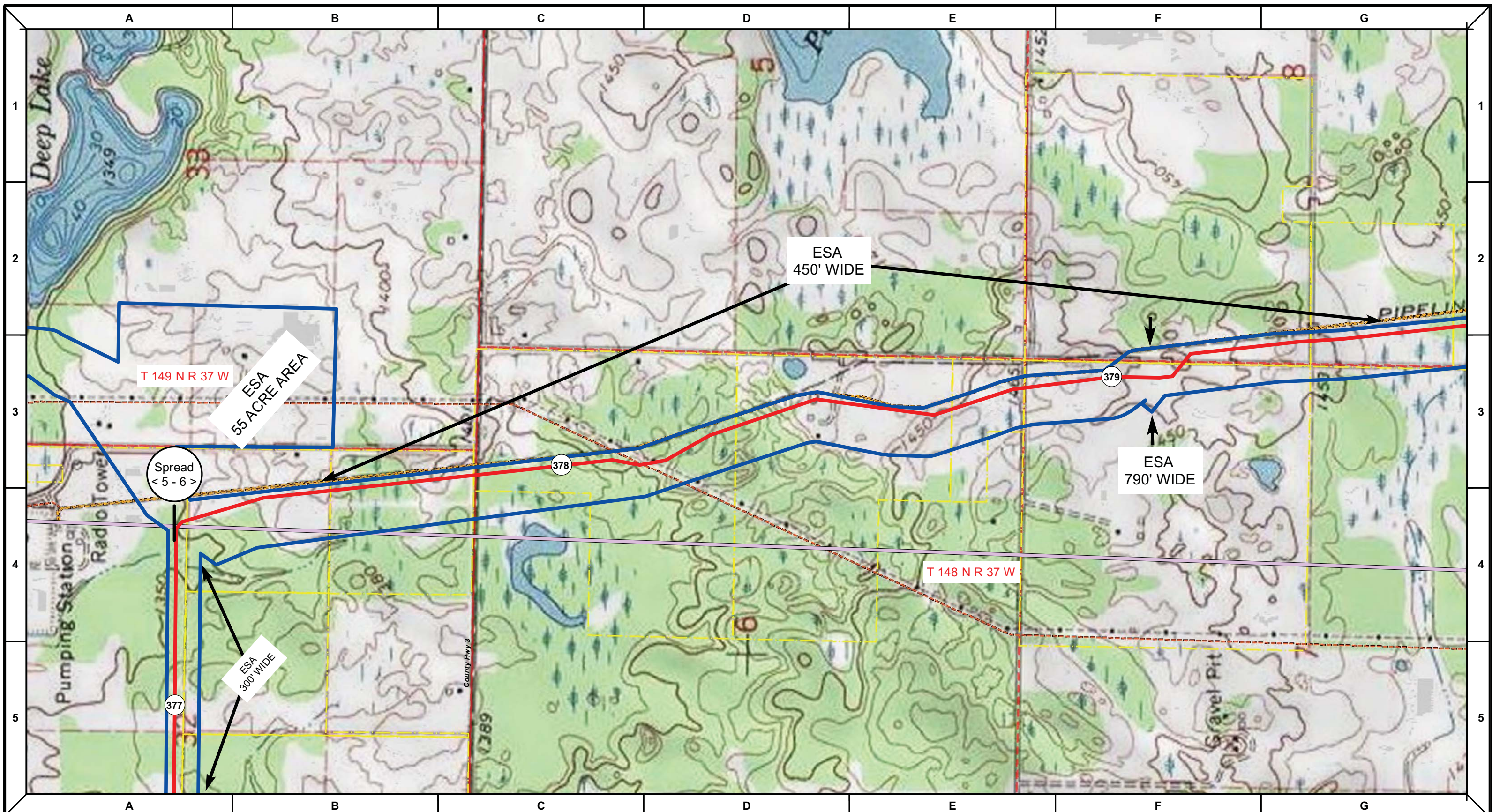
DRAWN	CHECKED	APPROVED	DATE	REV NO.	DESCRIPTION
			1/29/14	2	PUC Update - Revision D-2 Alignment
			12/19/13	1	PUC Update - Revision D Alignment
			10/10/13	0	PUC Submittal

NORTH DAKOTA PIPELINE COMPANY LLC

PROPOSED SANDPIPER PIPELINE PROJECT
ROUTE MAP
 Clearwater County, MN

DRAWN: <i>MLB</i>	CHECKED: <i>-</i>
DATE: <i>Jan 30, 2014</i>	SCALE: <i>AS SHOWN</i>

Spread:6
Map: 34 of 123



Proposed Pipeline - Sandpiper	Milepost - Sandpiper	Tract Boundary
Existing Enbridge Pipelines	Potential Block Valve	Facility Boundary
Foreign Pipes	Environmental Survey Area (ESA)	Previously Sited Facility Boundary
Transmission Lines	Section Lines	
SPREAD BREAK		

500 250 0 500 1,000 Feet

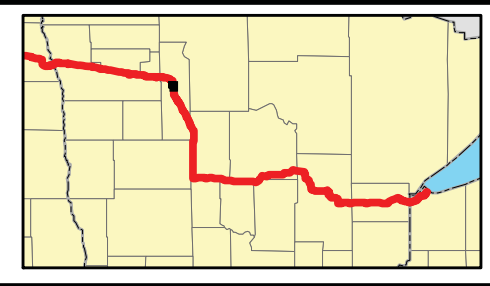
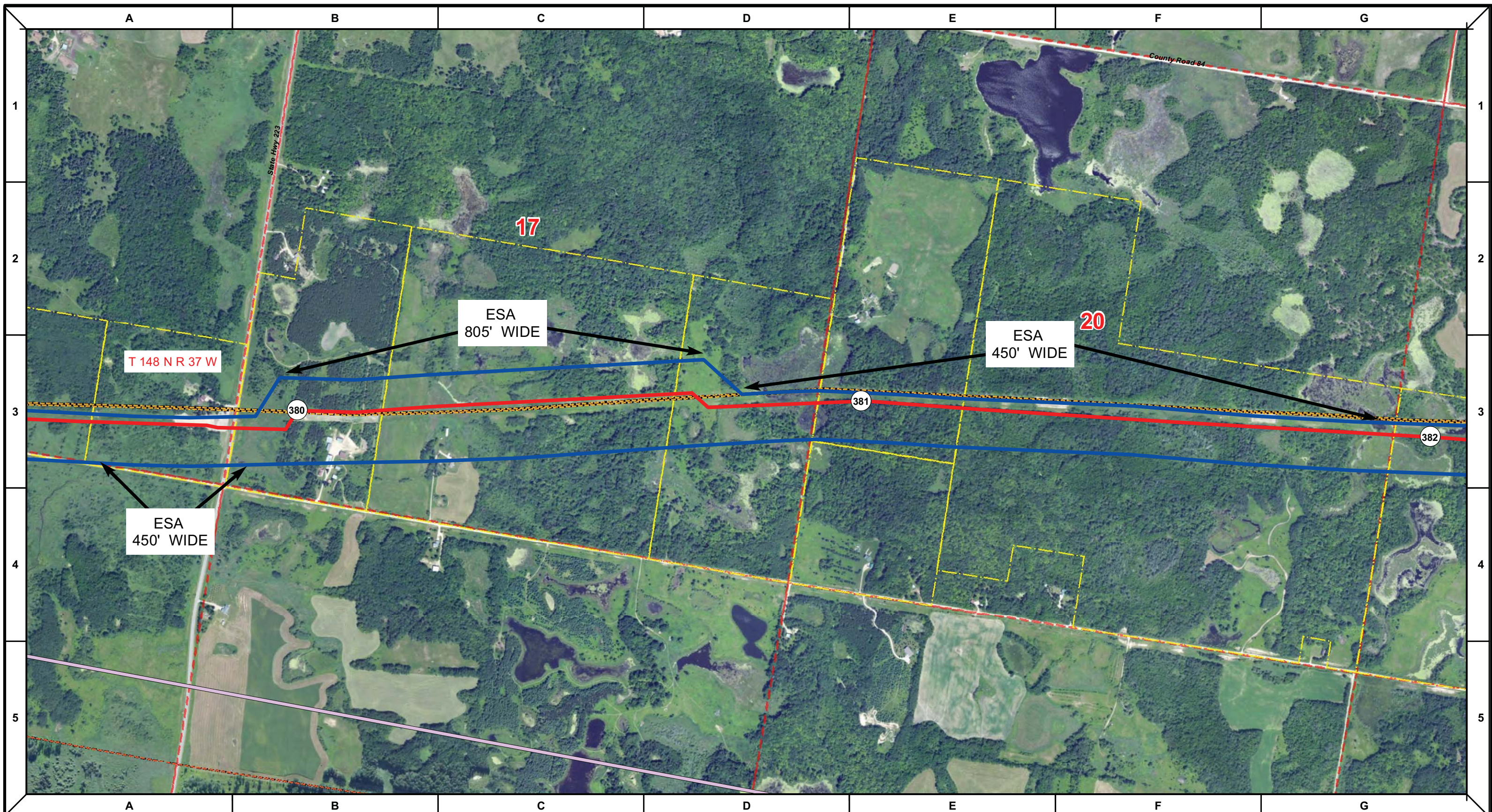
DRAWN	CHECKED	APPROVED	DATE	REV NO.	DESCRIPTION
			1/29/14	2	PUC Update - Revision D-2 Alignment
			12/19/13	1	PUC Update - Revision D Alignment
			10/10/13	0	PUC Submittal

ENBRIDGE
NORTH DAKOTA PIPELINE COMPANY LLC

**PROPOSED SANDPIPER
PIPELINE PROJECT
ROUTE MAP
Clearwater County, MN**

DRAWN: MLB	CHECKED: -
DATE: Jan 30, 2014	SCALE: AS SHOWN

Spread:6 Map: 34 of 123



Proposed Pipeline - Sandpiper	Milepost - Sandpiper	Tract Boundary
Existing Enbridge Pipelines	Potential Block Valve	Facility Boundary
Foreign Pipes	Environmental Survey Area (ESA)	Previously Sited Facility Boundary
Transmission Lines	Section Lines	
SPREAD BREAK		

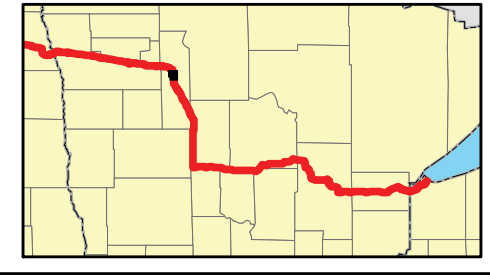
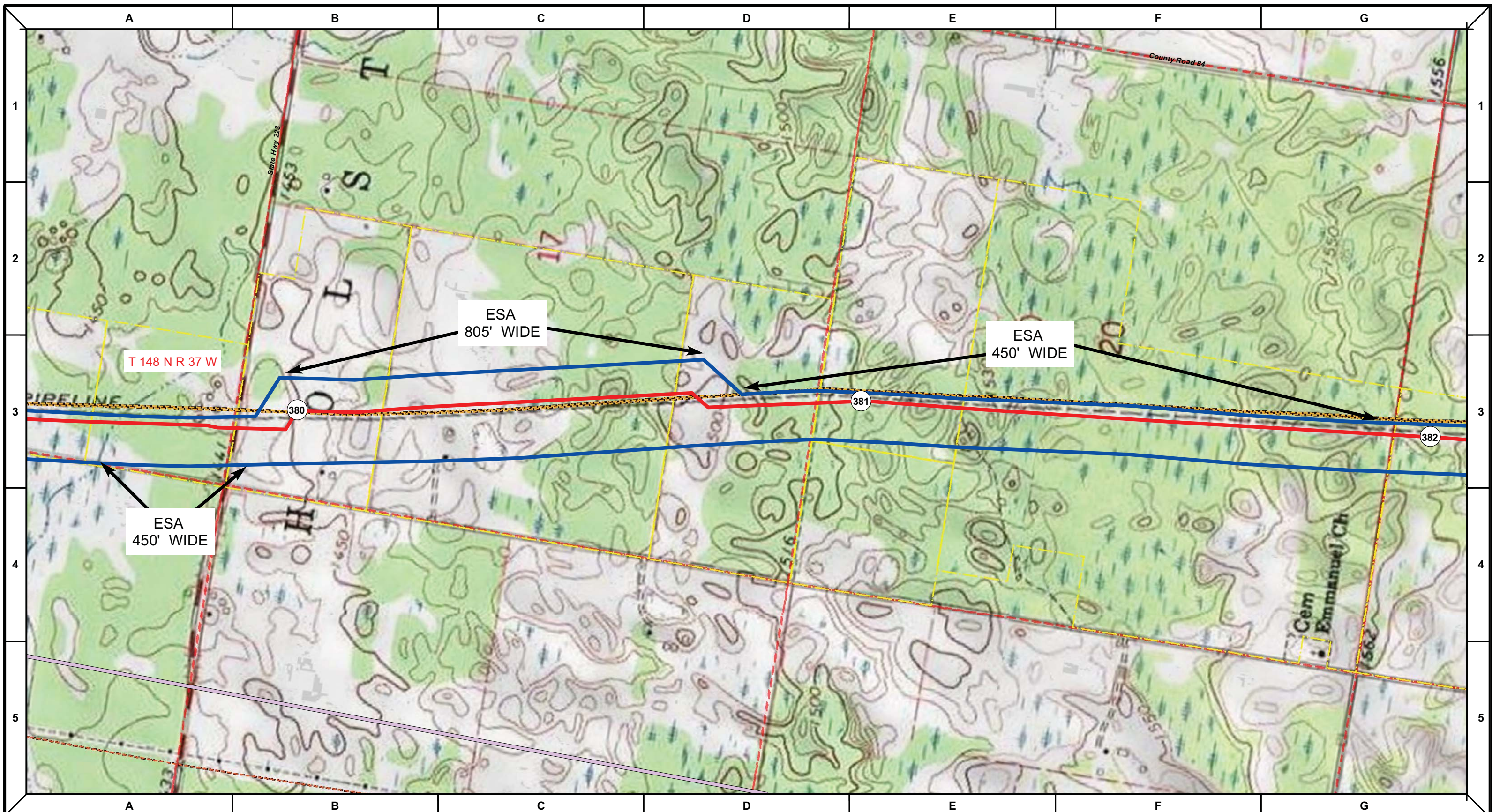
DRAWN	CHECKED	APPROVED	DATE	REV NO.	DESCRIPTION
			1/29/14	2	PUC Update - Revision D-2 Alignment
			12/19/13	1	PUC Update - Revision D Alignment
			10/10/13	0	PUC Submittal

NORTH DAKOTA PIPELINE COMPANY LLC

PROPOSED SANDPIPER PIPELINE PROJECT
ROUTE MAP
Clearwater County, MN

DRAWN: <i>MLB</i>	CHECKED: <i>-</i>
DATE: <i>Jan 30, 2014</i>	SCALE: <i>AS SHOWN</i>

Spread:6 Map: 35 of 123



Proposed Pipeline - Sandpiper	Milepost - Sandpiper	Tract Boundary
Existing Enbridge Pipelines	Potential Block Valve	Facility Boundary
Foreign Pipes	Environmental Survey Area (ESA)	Previously Sited Facility Boundary
Transmission Lines		Section Lines
SPREAD BREAK		

500 250 0 500 1,000 Feet

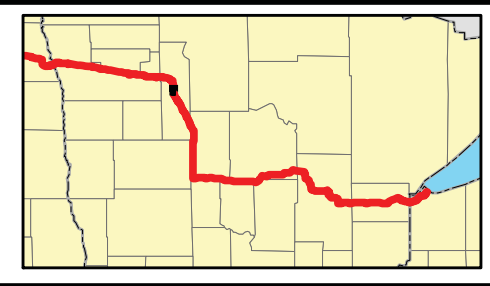
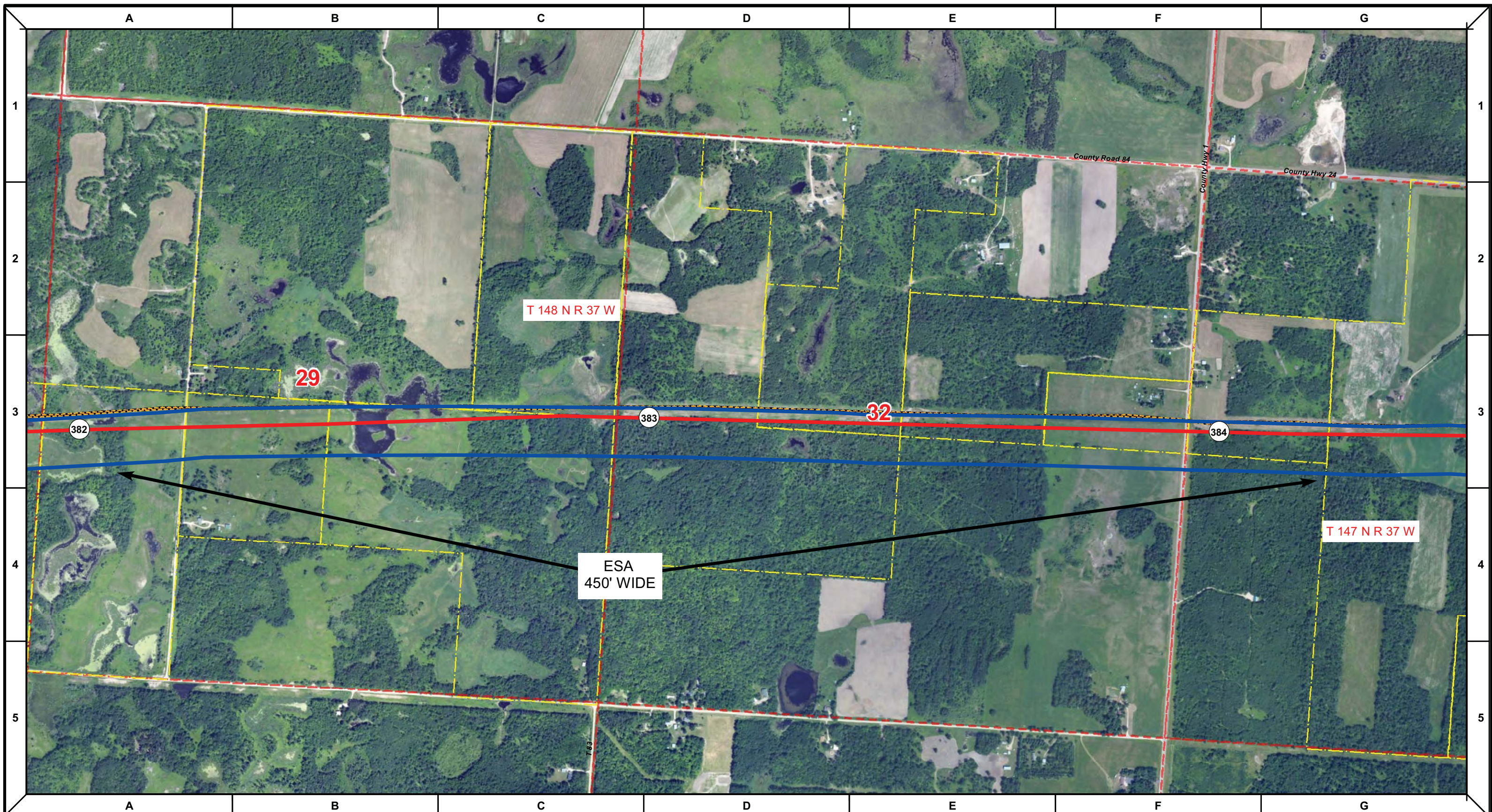
DRAWN	CHECKED	APPROVED	DATE	REV NO.	DESCRIPTION
			1/29/14	2	PUC Update - Revision D-2 Alignment
			12/19/13	1	PUC Update - Revision D Alignment
			10/10/13	0	PUC Submittal

NORTH DAKOTA PIPELINE COMPANY LLC

PROPOSED SANDPIPER PIPELINE PROJECT
ROUTE MAP
 Clearwater County, MN

DRAWN: MLB	CHECKED: -
DATE: Jan 30, 2014	SCALE: AS SHOWN

Spread:6 Map: 35 of 123



Proposed Pipeline - Sandpiper	Milepost - Sandpiper	Tract Boundary
Existing Enbridge Pipelines	Potential Block Valve	Facility Boundary
Foreign Pipes	Environmental Survey Area (ESA)	Previously Sited Facility Boundary
Transmission Lines	Section Lines	
SPREAD BREAK		

500 250 0 500 1,000 Feet

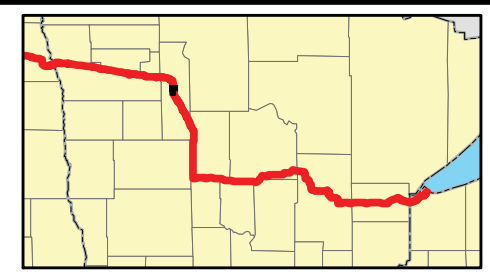
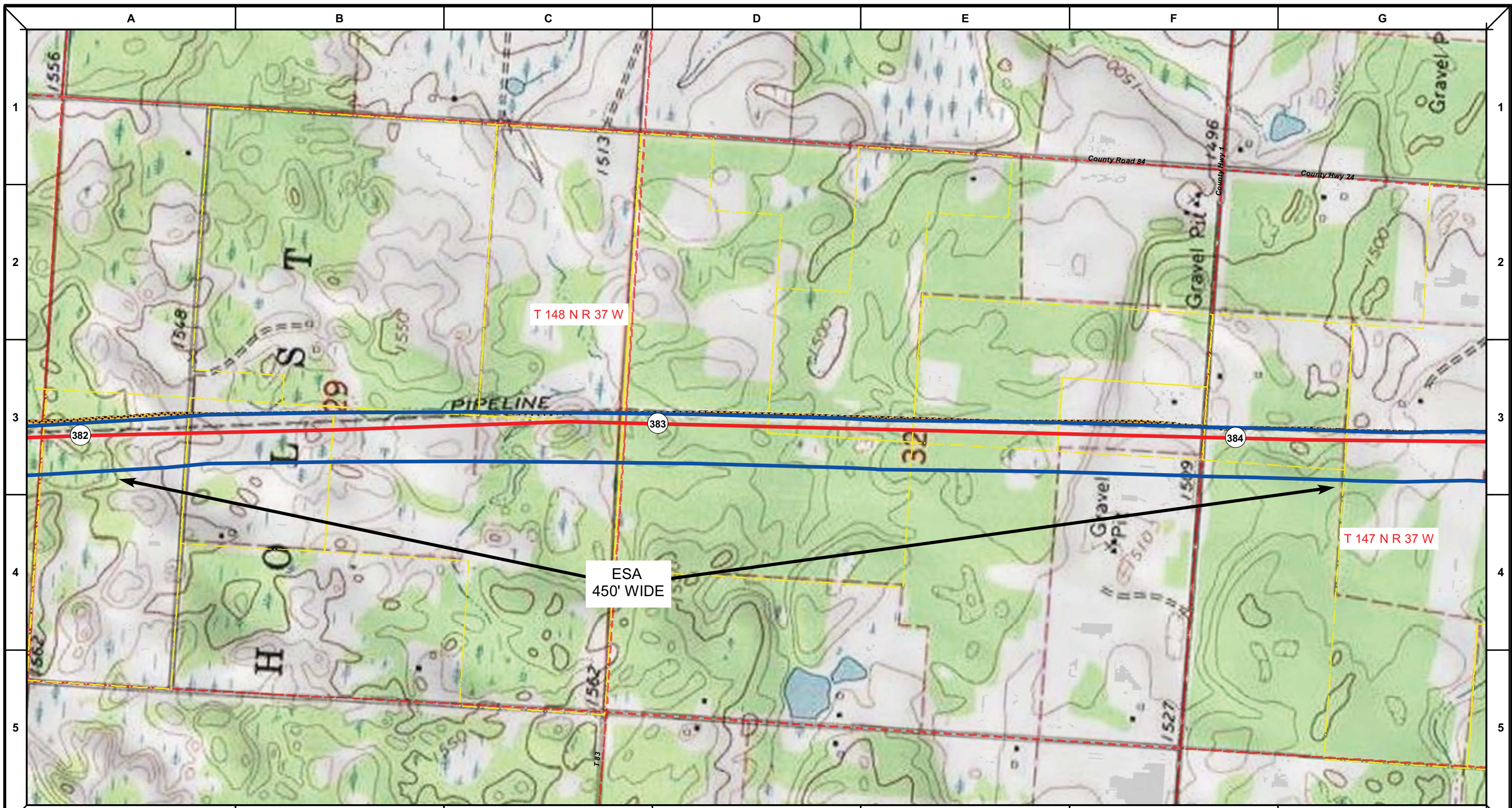
DRAWN	CHECKED	APPROVED	DATE	REV NO.	DESCRIPTION
			1/29/14	2	PUC Update - Revision D-2 Alignment
			12/19/13	1	PUC Update - Revision D Alignment
			10/10/13	0	PUC Submittal

NORTH DAKOTA PIPELINE COMPANY LLC

PROPOSED SANDPIPER PIPELINE PROJECT
ROUTE MAP
 Clearwater County, MN

DRAWN: <i>MLB</i>	CHECKED: <i>--</i>
DATE: <i>Jan 30, 2014</i>	SCALE: <i>AS SHOWN</i>

Spread:6 Map: 36 of 123



Proposed Pipeline - Sandpiper	Milepost - Sandpiper	Tract Boundary
Existing Enbridge Pipelines	Potential Block Valve	Facility Boundary
Foreign Pipes	Environmental Survey Area (ESA)	Previously Sited Facility Boundary
Transmission Lines		Section Lines
SPREAD BREAK		

500 250 0 500 1,000 Feet

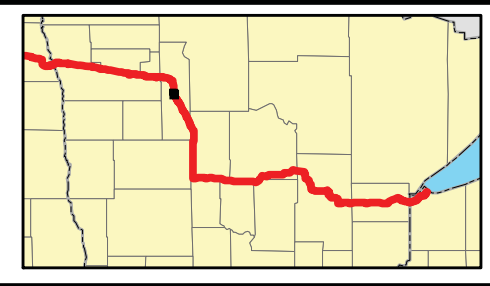
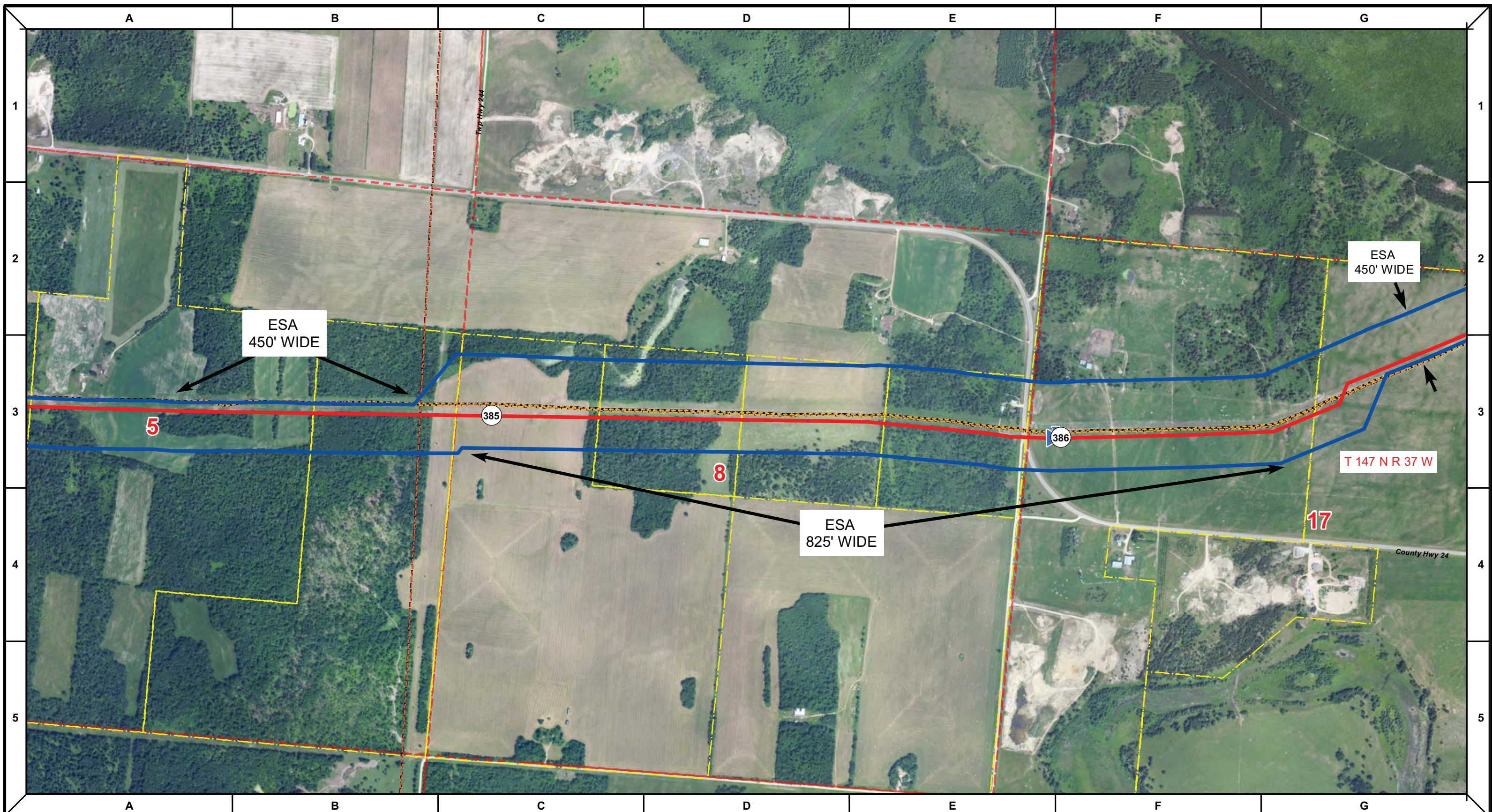
DRAWN	CHECKED	APPROVED	DATE	REV NO.	DESCRIPTION
			1/29/14	2	PUC Update - Revision D-2 Alignment
			12/19/13	1	PUC Update - Revision D Alignment
			10/10/13	0	PUC Submittal

NORTH DAKOTA PIPELINE COMPANY LLC

PROPOSED SANDPIPER PIPELINE PROJECT
ROUTE MAP
 Clearwater County, MN

DRAWN: MLB	CHECKED: -
DATE: Jan 30, 2014	SCALE: AS SHOWN

Spread:6 Map: 36 of 123



Proposed Pipeline - Sandpiper	Milepost - Sandpiper	Tract Boundary
Existing Enbridge Pipelines	Potential Block Valve	Facility Boundary
Foreign Pipes	Environmental Survey Area (ESA)	Previously Sited Facility Boundary
Transmission Lines	Section Lines	
SPREAD BREAK		

500 250 0 500 1,000 Feet

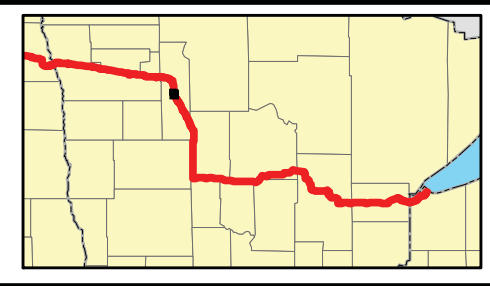
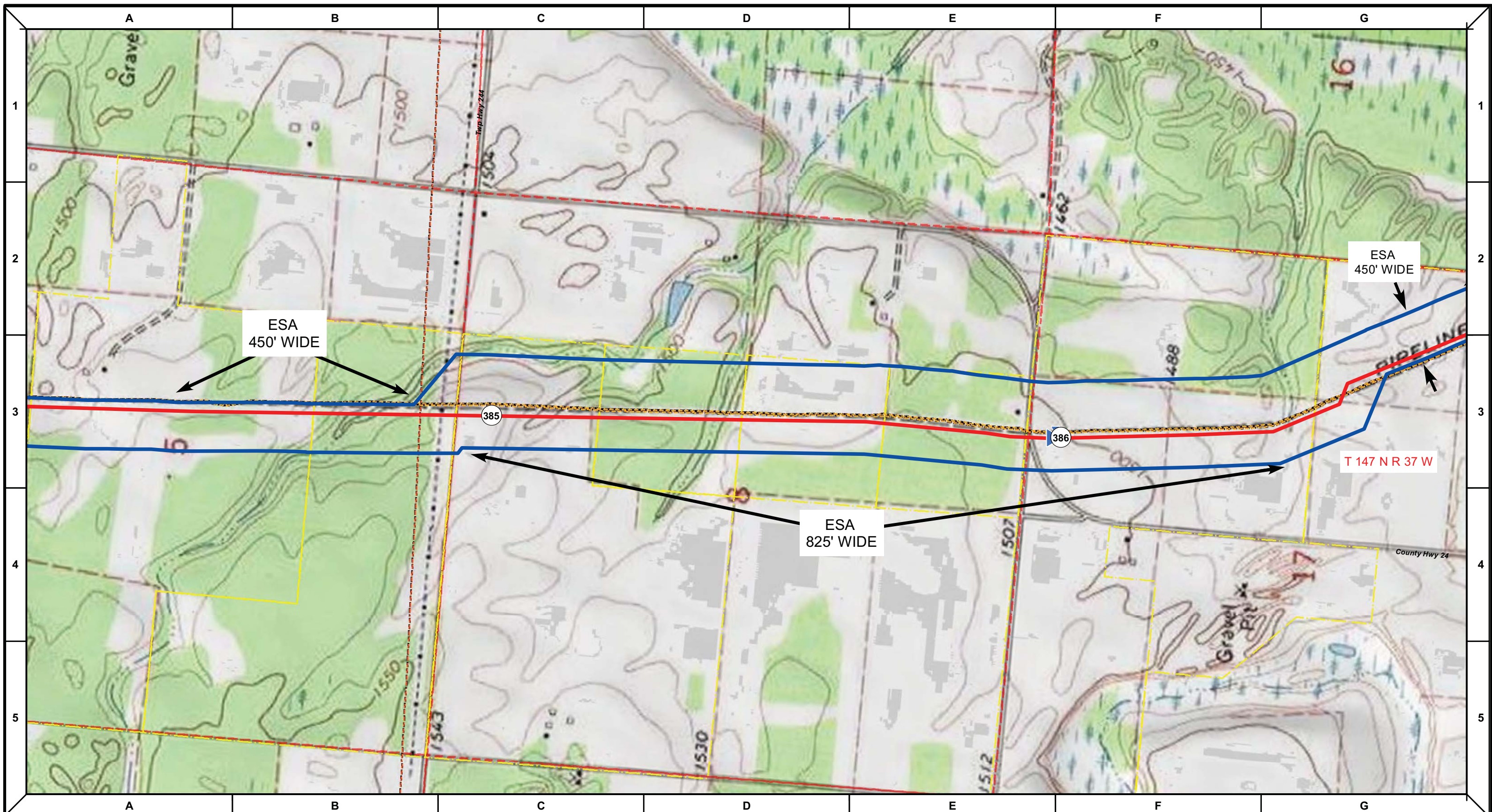
DRAWN	CHECKED	APPROVED	DATE	REV NO.	DESCRIPTION
			1/29/14	2	PUC Update - Revision D-2 Alignment
			12/19/13	1	PUC Update - Revision D Alignment
			10/10/13	0	PUC Submittal

NORTH DAKOTA PIPELINE COMPANY LLC

PROPOSED SANDPIPER PIPELINE PROJECT
ROUTE MAP
Clearwater County, MN

DRAWN: MLB	CHECKED: -
DATE: Jan 30, 2014	SCALE: AS SHOWN

Spread:6 Map: 37 of 123



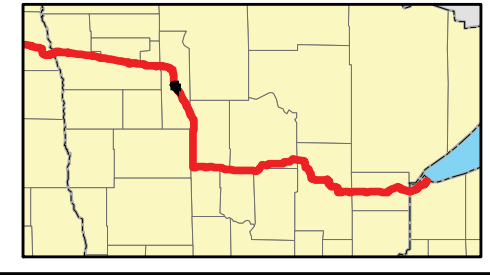
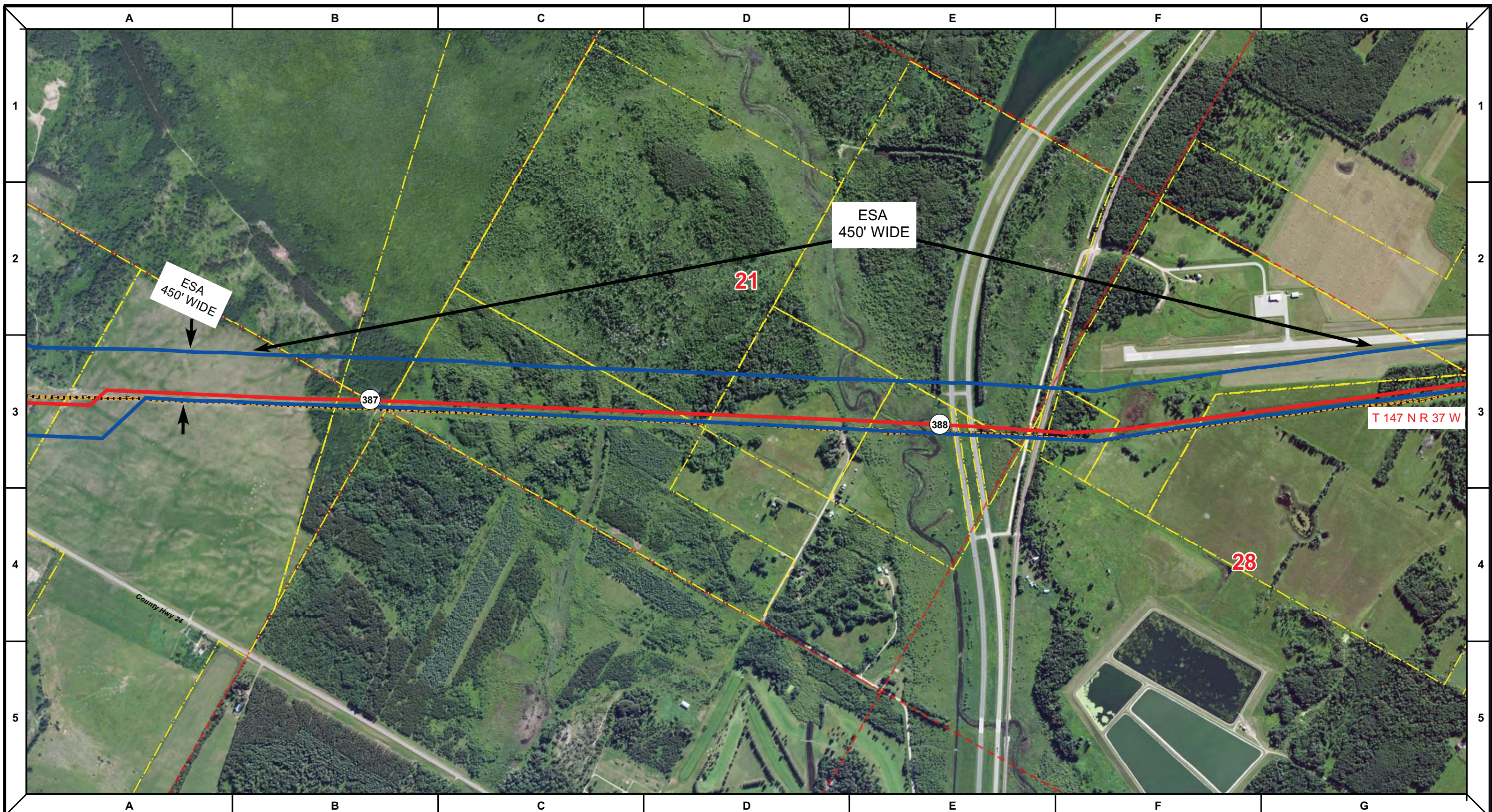
Proposed Pipeline - Sandpiper	Milepost - Sandpiper	Tract Boundary
Existing Enbridge Pipelines	Potential Block Valve	Facility Boundary
Foreign Pipes	Environmental Survey Area (ESA)	Previously Sited Facility Boundary
Transmission Lines		Section Lines
SPREAD BREAK		

DRAWN	CHECKED	APPROVED	DATE	REV NO.	DESCRIPTION
			1/29/14	2	PUC Update - Revision D-2 Alignment
			12/19/13	1	PUC Update - Revision D Alignment
			10/10/13	0	PUC Submittal

NORTH DAKOTA PIPELINE COMPANY LLC
PROPOSED SANDPIPER PIPELINE PROJECT
ROUTE MAP
Clearwater County, MN

DRAWN: MLB	CHECKED: -
DATE: Jan 30, 2014	SCALE: AS SHOWN

Spread:6 Map: 37 of 123



- Proposed Pipeline - Sandpiper
- Existing Enbridge Pipelines
- Foreign Pipes
- Transmission Lines
- SPREAD BREAK
- 1 Milepost - Sandpiper
- ✚ Potential Block Valve
- Environmental Survey Area (ESA)
- Tract Boundary
- Facility Boundary
- Previously Sited Facility Boundary
- Section Lines

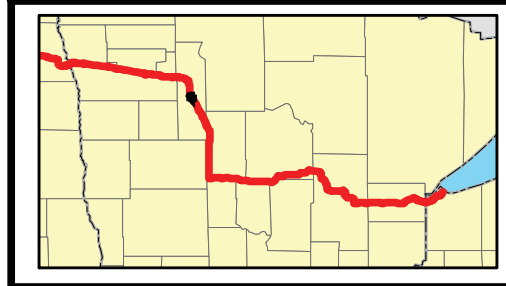
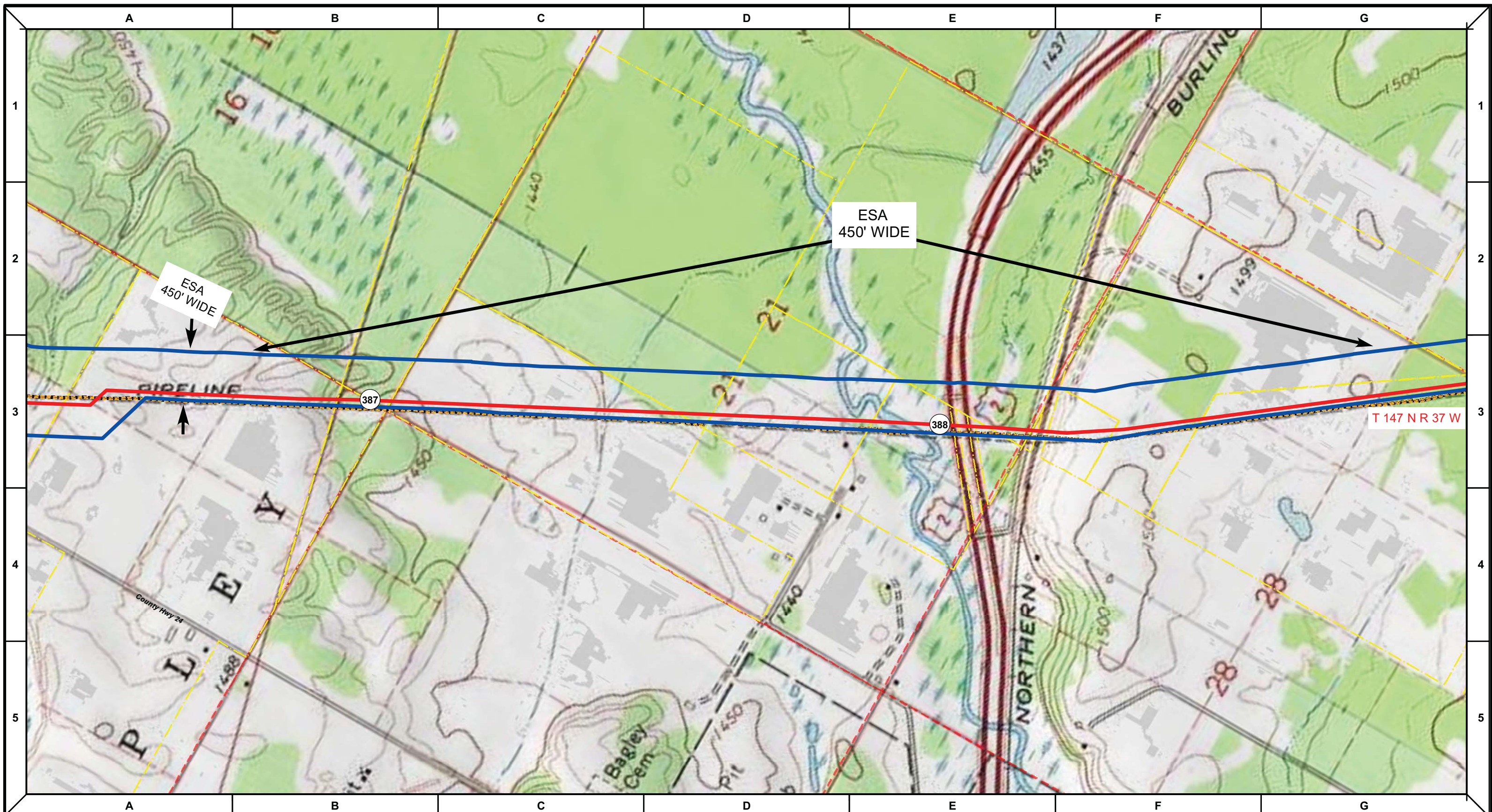
DRAWN	CHECKED	APPROVED	DATE	REV NO.	DESCRIPTION
			1/29/14	2	PUC Update - Revision D-2 Alignment
			12/19/13	1	PUC Update - Revision D Alignment
			10/10/13	0	PUC Submittal

NORTH DAKOTA PIPELINE COMPANY LLC

PROPOSED SANDPIPER PIPELINE PROJECT
ROUTE MAP
Clearwater County, MN

DRAWN: MLB	CHECKED: --
DATE: Jan 30, 2014	SCALE: AS SHOWN

Spread:6
Map: 38 of 123



Proposed Pipeline - Sandpiper	Milepost - Sandpiper	Tract Boundary
Existing Enbridge Pipelines	Potential Block Valve	Facility Boundary
Foreign Pipes	Environmental Survey Area (ESA)	Previously Sited Facility Boundary
Transmission Lines		Section Lines
SPREAD BREAK		

DRAWN	CHECKED	APPROVED	DATE	REV NO.	DESCRIPTION
			1/29/14	2	PUC Update - Revision D-2 Alignment
			12/19/13	1	PUC Update - Revision D Alignment
			10/10/13	0	PUC Submittal

NORTH DAKOTA PIPELINE COMPANY LLC
PROPOSED SANDPIPER PIPELINE PROJECT
ROUTE MAP
Clearwater County, MN

DRAWN: MLB	CHECKED: -
DATE: Jan 30, 2014	SCALE: AS SHOWN

Spread:6 Map: 38 of 123