



0300600

Feet

1:7,200

GREAT RIVER ENERGY

MVEC

For Environmental Review Purposes Only

N
W
E
S

Appendix A

Laketown 115-kV Transmission Line Project

Detailed Route Maps

Carver County, Minnesota

Page 2 of 3

Great River Energy

○ Milepost

— Proposed Alignment

▬ 100ft Right-of-Way

▬ Proposed Route Width

— Minnesota Valley Distribution Line

— MDNR Hydrography Dataset Watercourse

— PWI Watercourse

NWI Wetland

Freshwater Emergent Wetland

Freshwater Forested Wetland

Freshwater Pond

Riverine

▬ MDNR Hydrography Dataset Lake/Pond

DNR Sand and Gravel Potential

Potential Secondary Source

DNR Gravel Pit

Residence

County Highway

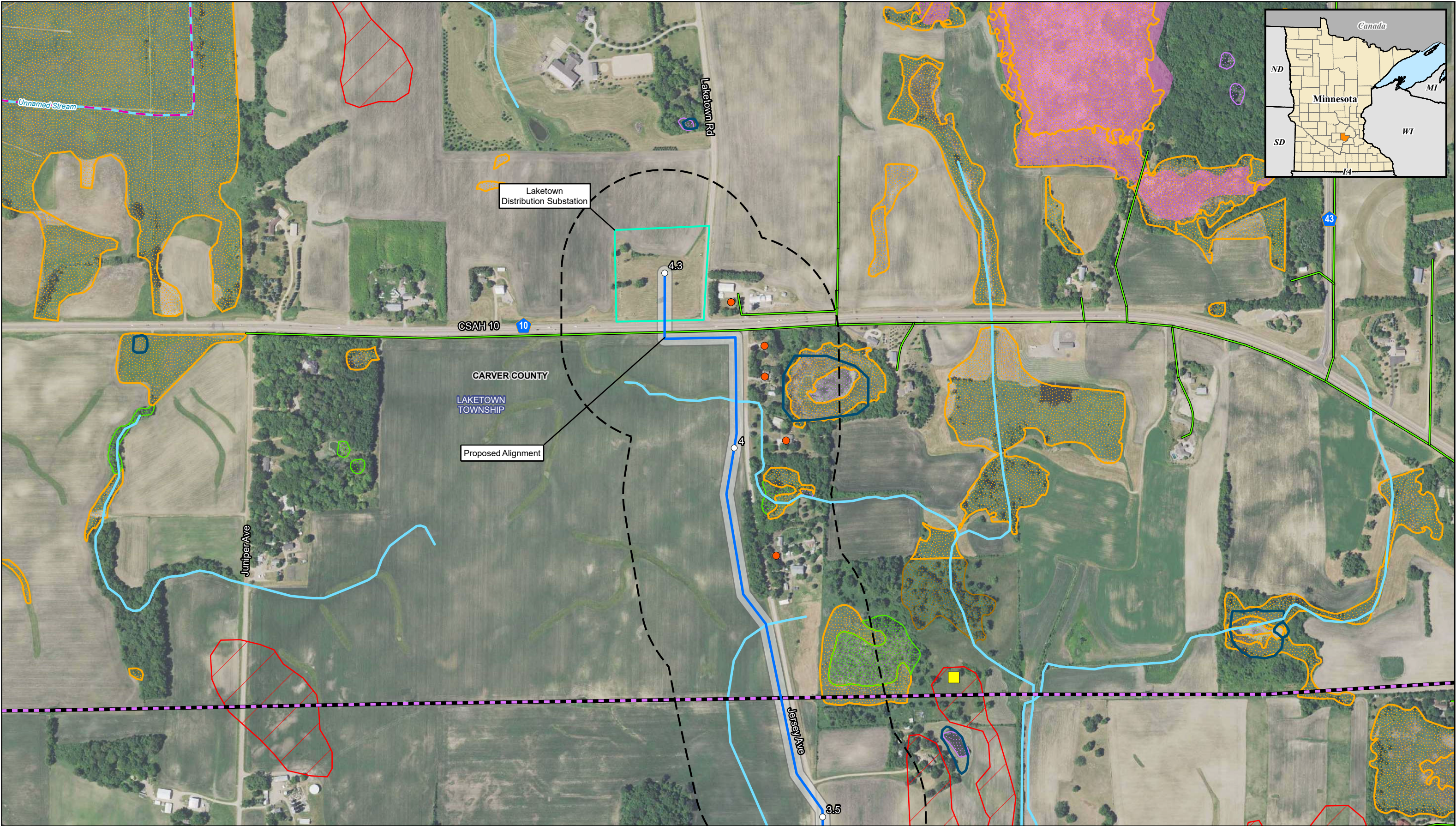
Railroad

Township Boundary

County Boundary

Date: (6/3/2024)

Source:



0300600

Feet

1:7,200

GREAT RIVER ENERGY

MVEC

For Environmental Review Purposes Only

N

E

S

W

Appendix A

Laketown 115-kV Transmission Line Project

Detailed Route Maps

Carver County, Minnesota

Page 3 of 3

Great River Energy

○ Milepost

— Proposed Alignment

Substation Parcel Boundary

100ft Right-of-Way

Proposed Route Width

Non-GRE Transmission

— 230-kV Transmission Line

— Minnesota Valley Distribution Line

— MDNR Hydrography Dataset Watercourse

— PWI Watercourse

NWI Wetland

Freshwater Emergent Wetland

Freshwater Forested Wetland

Freshwater Forested/Emergent Wetland

Freshwater Pond

MDNR Hydrography Dataset Lake/Pond

PWI Basin

DNR Sand and Gravel Potential

Potential Secondary Source

DNR Gravel Pit

Residence

County Highway

Township Boundary

County Boundary

Date: (6/3/2024)

Source: