

COUNTY: St. Louis

TOWNSHIP: Arrowhead

Sec 27
T 50 N
R 19 W

T-0148-1

Sec 26
T 50 N
R 19 W

T-0149

T-0147-3

Sec 34
T 50 N
R 19 W

T-0145-C

Sec 35
T 50 N
R 19 W

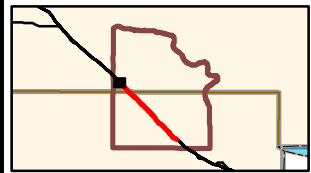
T-0147

T-0147-2

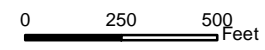
T-0146

1104

T-0145-B



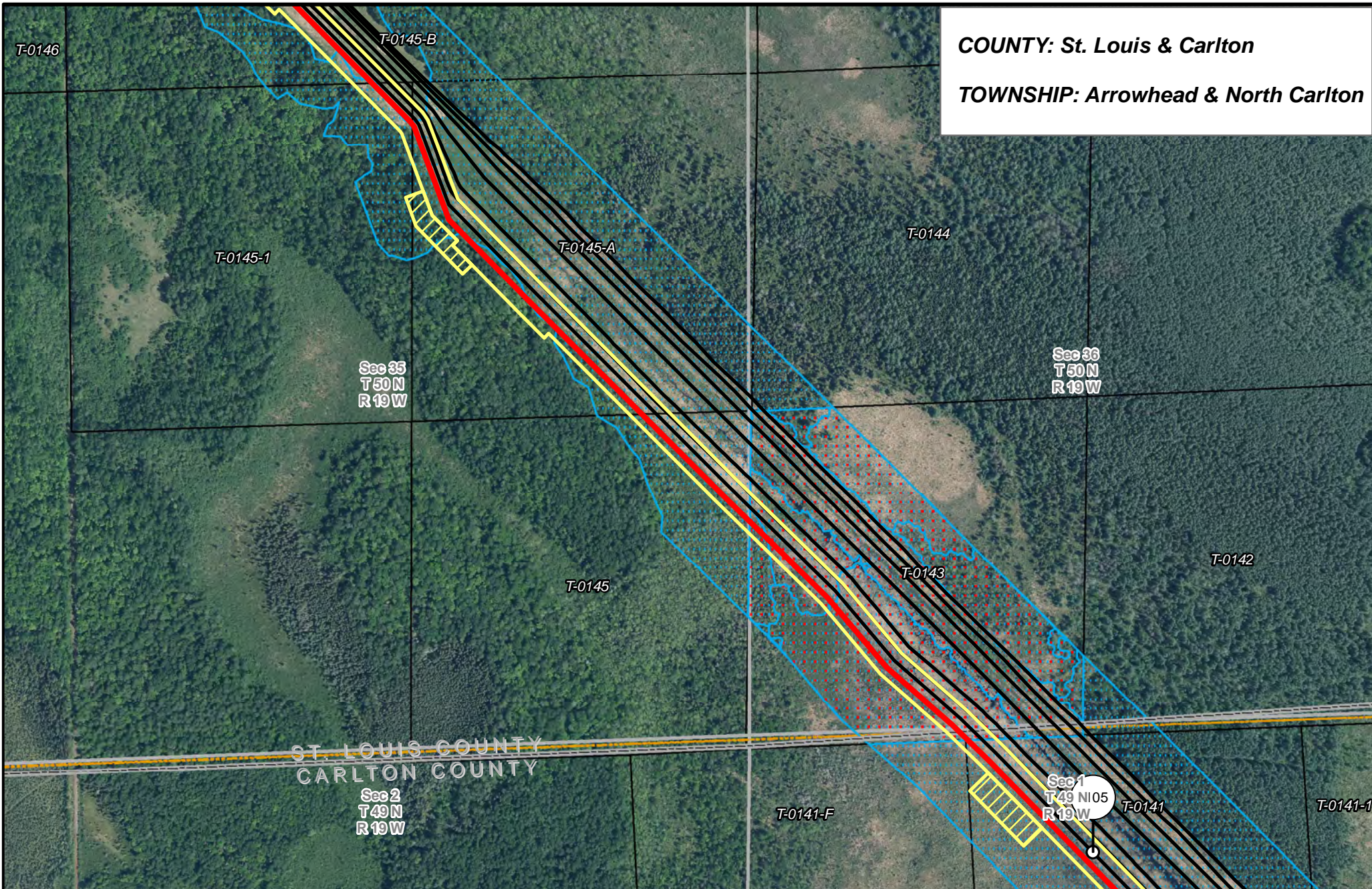
Fond du Lac Line 4 Relocation	Mile Post	Surveyed Waterbodies	Tract Boundary
Valve Location	Temporary Workspace	ESA	MN Section Boundary
Additional Temporary Workspace	Existing Enbridge Pipelines	Surveyed Wetlands	Township/City Boundary
Existing Electric Transmission	NWI Wetlands	County Boundary	
Existing Third Party Pipelines			



FOND DU LAC LINE 4 RELOCATION PROJECT

DRAWN: CLS CHECKED: --
DATE: 2/7/2019 SCALE: 1:6,000
Map 1 of 12

COUNTY: St. Louis & Carlton
TOWNSHIP: Arrowhead & North Carlton



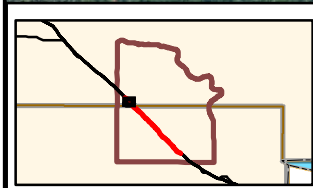
ST. LOUIS COUNTY
 CARLTON COUNTY

Sec 2
 T49 N
 R19 W

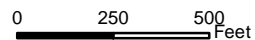
Sec 35
 T50 N
 R19 W

Sec 36
 T50 N
 R19 W

Sec 1
 T49 N105
 R19 W



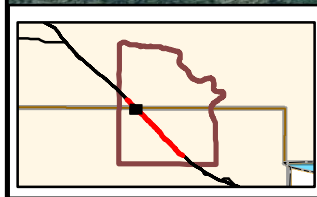
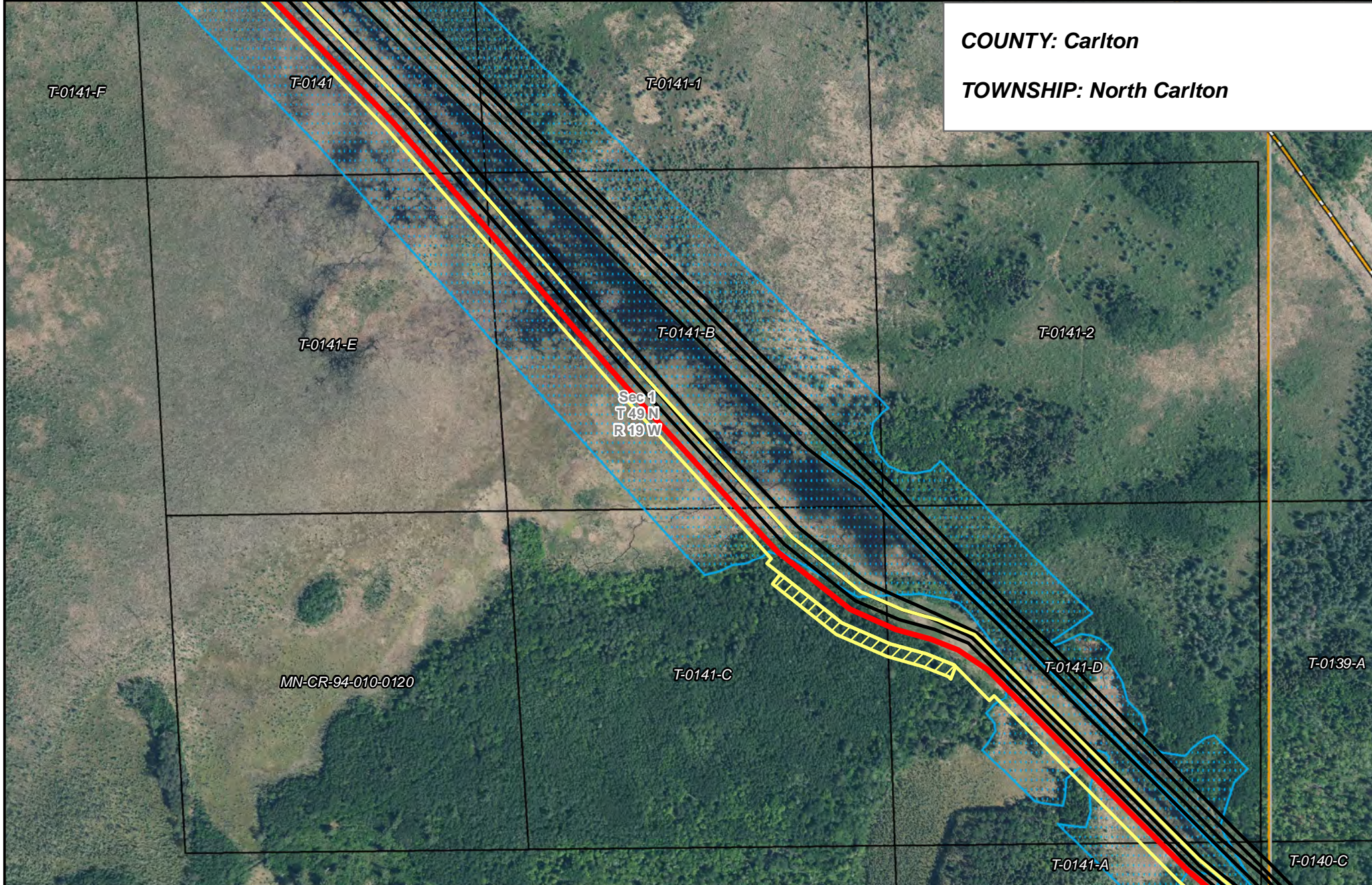
- Fond du Lac Line 4 Relocation
- Valve Location
- Mile Post
- Temporary Workspace
- Additional Temporary Workspace
- Existing Enbridge Pipelines
- Existing Electric Transmission
- Existing Third Party Pipelines
- Surveyed Waterbodies
- ESA
- Surveyed Wetlands
- NWI Wetlands
- Tract Boundary
- MN Section Boundary
- Township/City Boundary
- County Boundary



**FOND DU LAC LINE 4
 RELOCATION PROJECT**

DRAWN: CLS CHECKED: --
 DATE: 2/7/2019 SCALE: 1:6,000

COUNTY: Carlton
TOWNSHIP: North Carlton



Fond du Lac Line 4 Relocation	Mile Post	Surveyed Waterbodies	Tract Boundary
Valve Location	Temporary Workspace	ESA	MN Section Boundary
Additional Temporary Workspace	Surveyed Wetlands	NWI Wetlands	Township/City Boundary
Existing Enbridge Pipelines	Existing Electric Transmission	Existing Third Party Pipelines	County Boundary

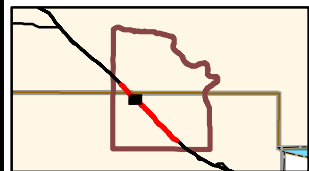
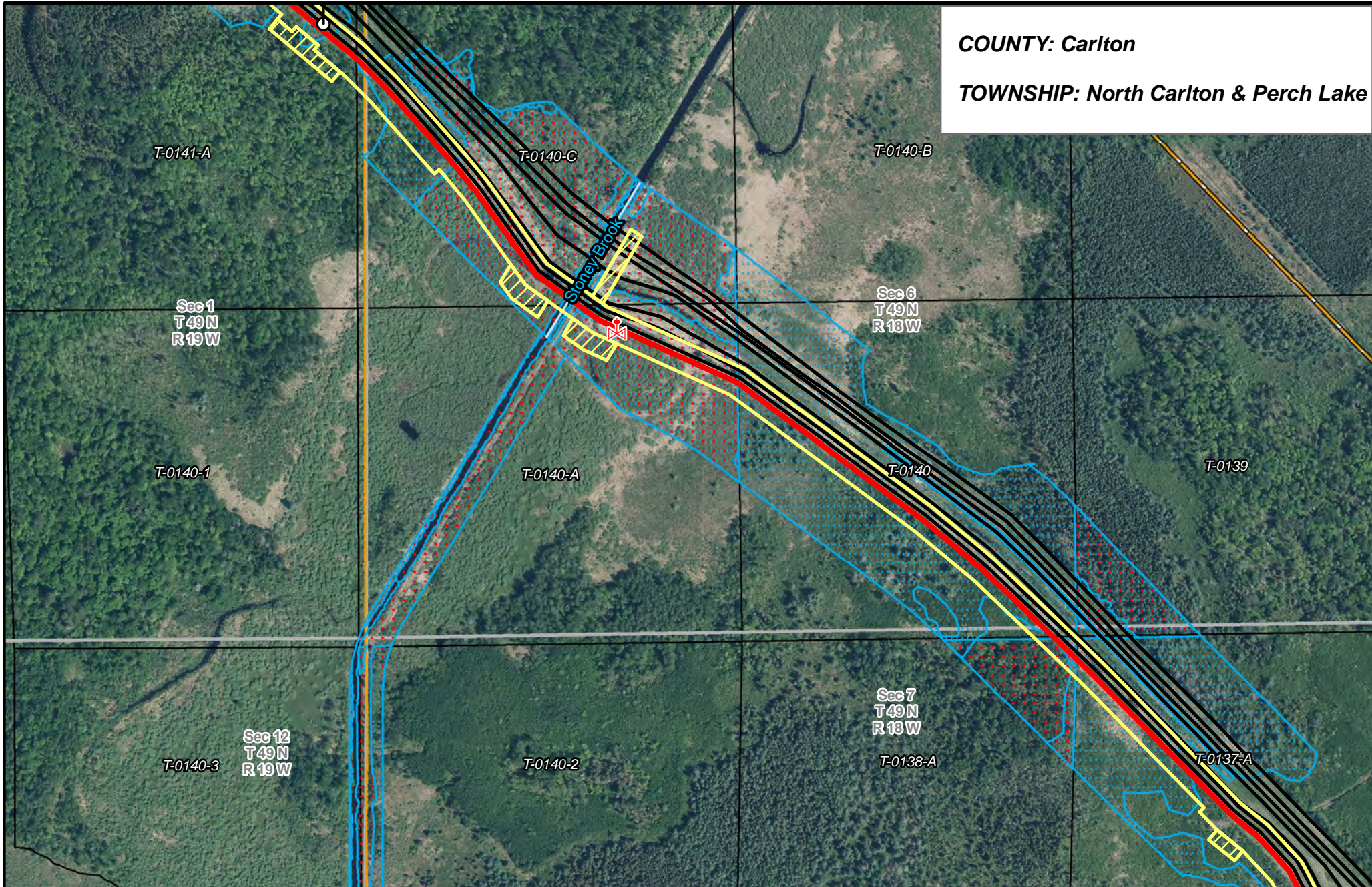
0 250 500 Feet

**FOND DU LAC LINE 4
RELOCATION PROJECT**

DRAWN: CLS	CHECKED: --
DATE: 2/7/2019	SCALE: 1:6,000

Map 3 of 12

COUNTY: Carlton
TOWNSHIP: North Carlton & Perch Lake



— Fond du Lac Line 4 Relocation
 ⊠ Valve Location

○ Mile Post
 □ Temporary Workspace
 □ Additional Temporary Workspace
 — Existing Enbridge Pipelines
 — Existing Electric Transmission
 — Existing Third Party Pipelines

— Surveyed Waterbodies
 □ ESA
 □ Surveyed Wetlands
 □ NWI Wetlands

□ Tract Boundary
 □ MN Section Boundary
 □ Township/City Boundary
 □ County Boundary

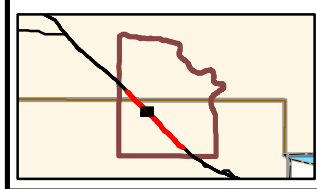
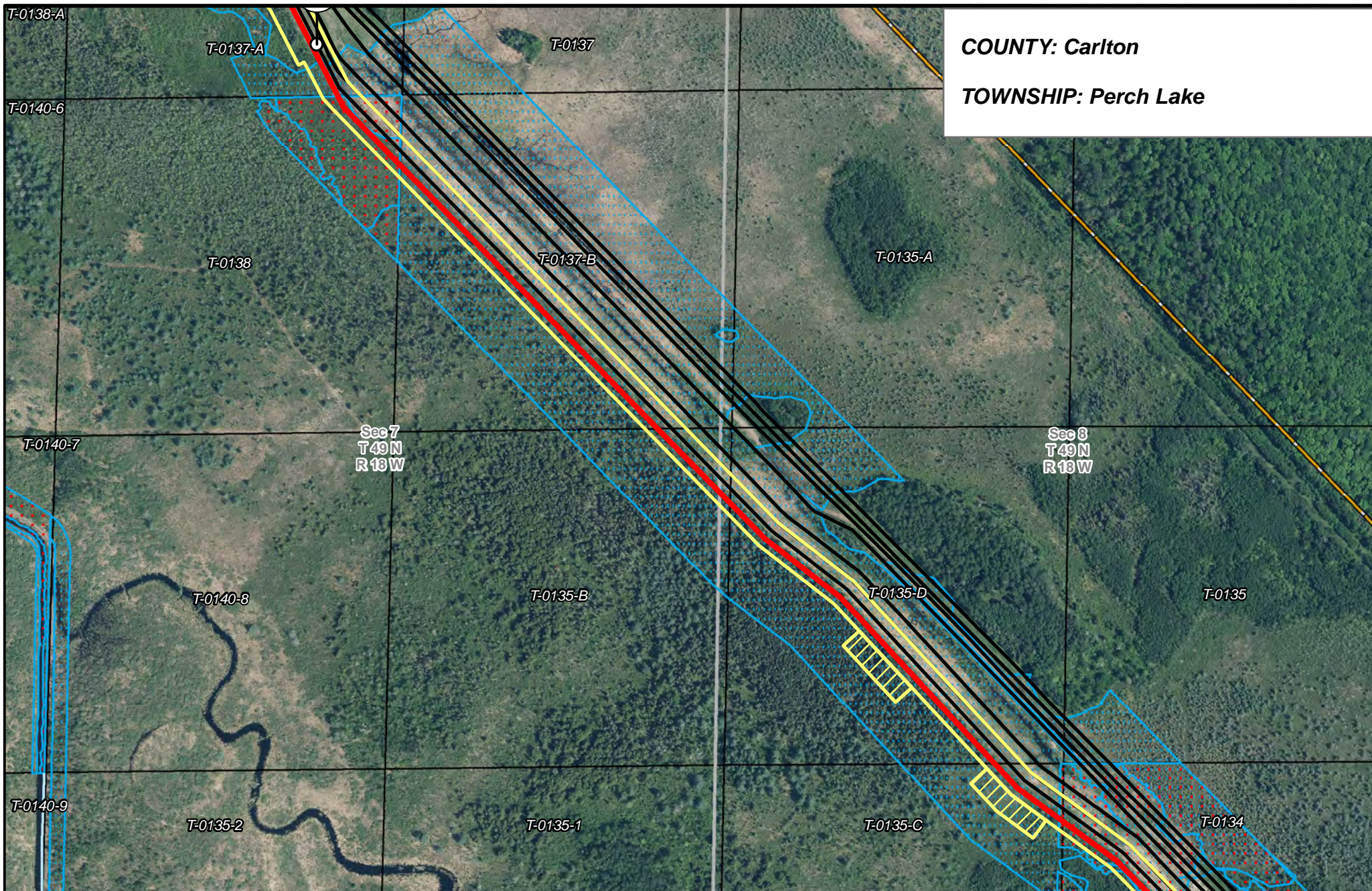
0 250 500 Feet



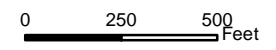
**FOND DU LAC LINE 4
 RELOCATION PROJECT**

DRAWN: CLS CHECKED: --
 DATE: 2/7/2019 SCALE: 1:6,000

COUNTY: Carlton
TOWNSHIP: Perch Lake



Fond du Lac Line 4 Relocation	Mile Post	Surveyed Waterbodies	Tract Boundary
Valve Location	Temporary Workspace	ESA	MN Section Boundary
Existing Enbridge Pipelines	Additional Temporary Workspace	Surveyed Wetlands	Township/City Boundary
Existing Electric Transmission	Existing Third Party Pipelines	NWI Wetlands	County Boundary

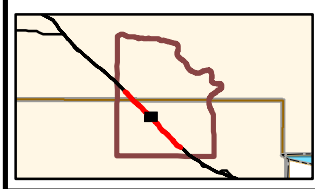
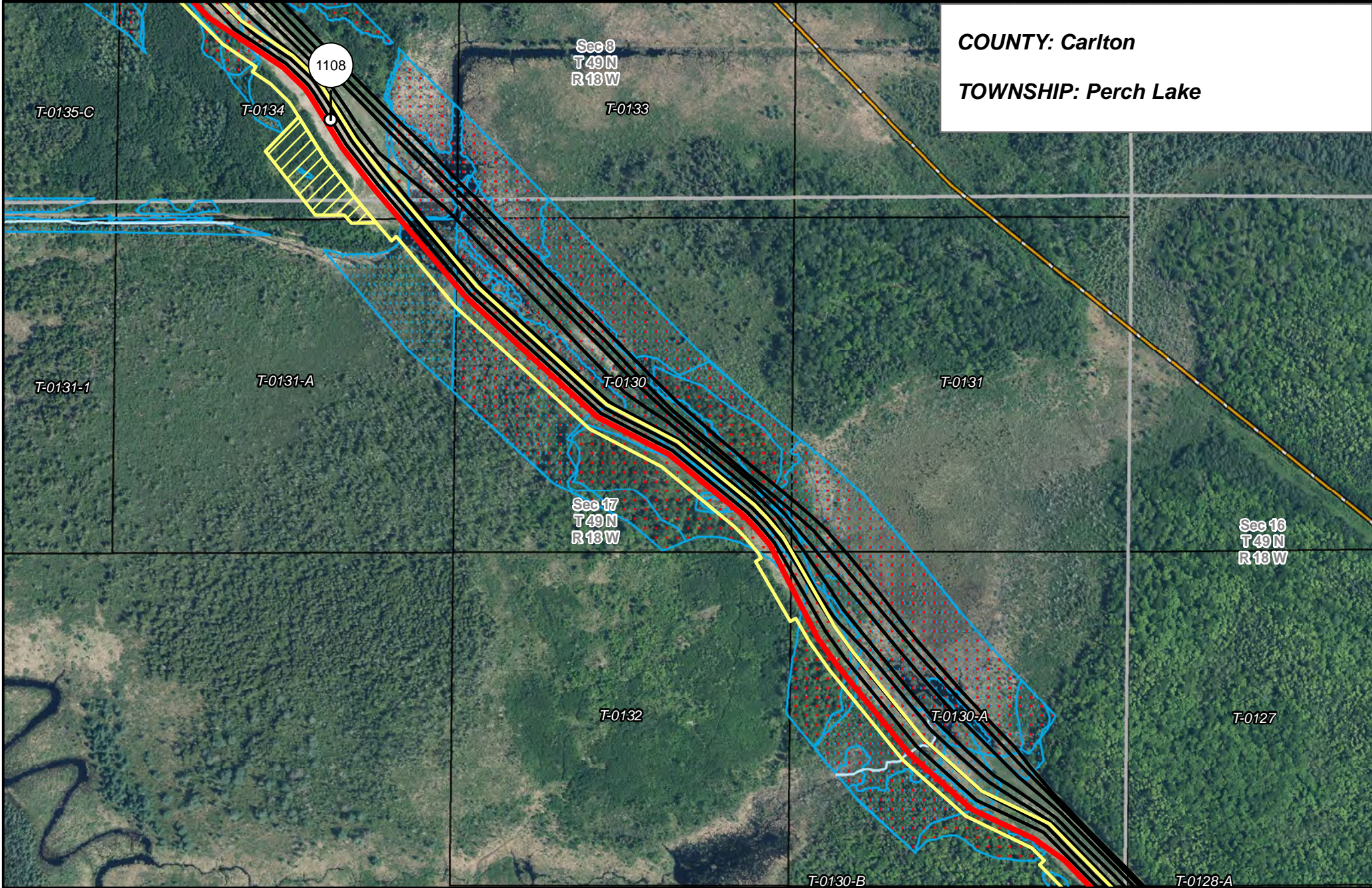


**FOND DU LAC LINE 4
RELOCATION PROJECT**

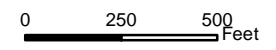
DRAWN: CLS	CHECKED: --
DATE: 2/7/2019	SCALE: 1:6,000

Map 5 of 12

COUNTY: Carlton
TOWNSHIP: Perch Lake



- Fond du Lac Line 4 Relocation
- Valve Location
- Mile Post
- Temporary Workspace
- Additional Temporary Workspace
- Existing Enbridge Pipelines
- Existing Electric Transmission
- Existing Third Party Pipelines
- Surveyed Waterbodies
- ESA
- Surveyed Wetlands
- NWI Wetlands
- Tract Boundary
- MN Section Boundary
- Township/City Boundary
- County Boundary

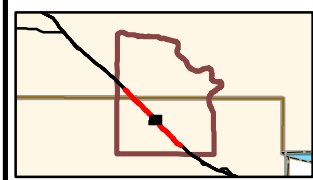
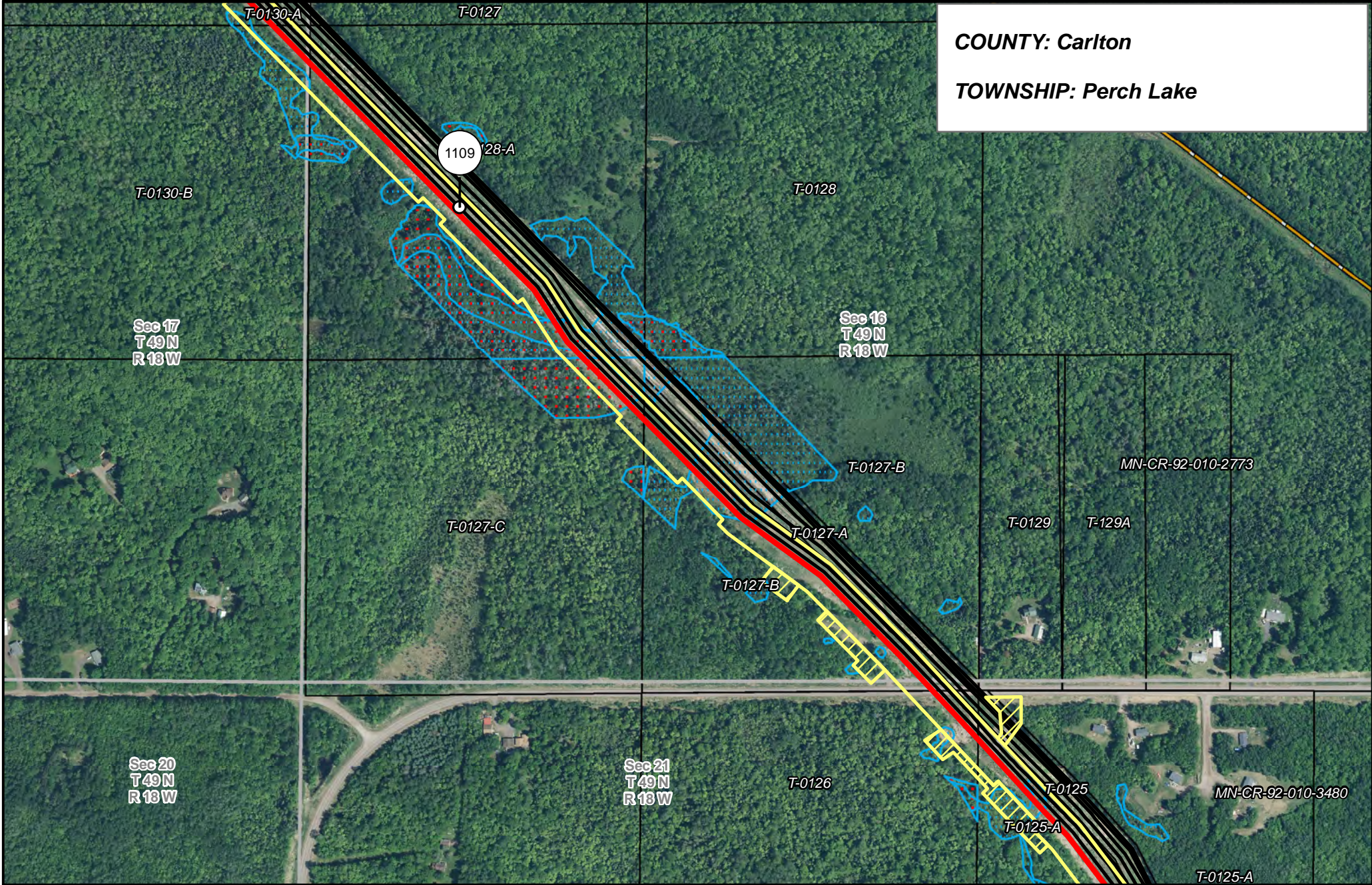


**FOND DU LAC LINE 4
RELOCATION PROJECT**

DRAWN: CLS	CHECKED: --
DATE: 2/7/2019	SCALE: 1:6,000

Map 6 of 12

COUNTY: Carlton
TOWNSHIP: Perch Lake



— Fond du Lac Line 4 Relocation
 ⚡ Valve Location

○ Mile Post
 □ Temporary Workspace
 □ Additional Temporary Workspace
 — Existing Enbridge Pipelines
 — Existing Electric Transmission
 — Existing Third Party Pipelines

— Surveyed Waterbodies
 □ ESA
 □ Surveyed Wetlands
 □ NWI Wetlands

□ Tract Boundary
 □ MN Section Boundary
 □ Township/City Boundary
 □ County Boundary

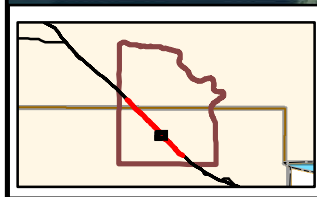
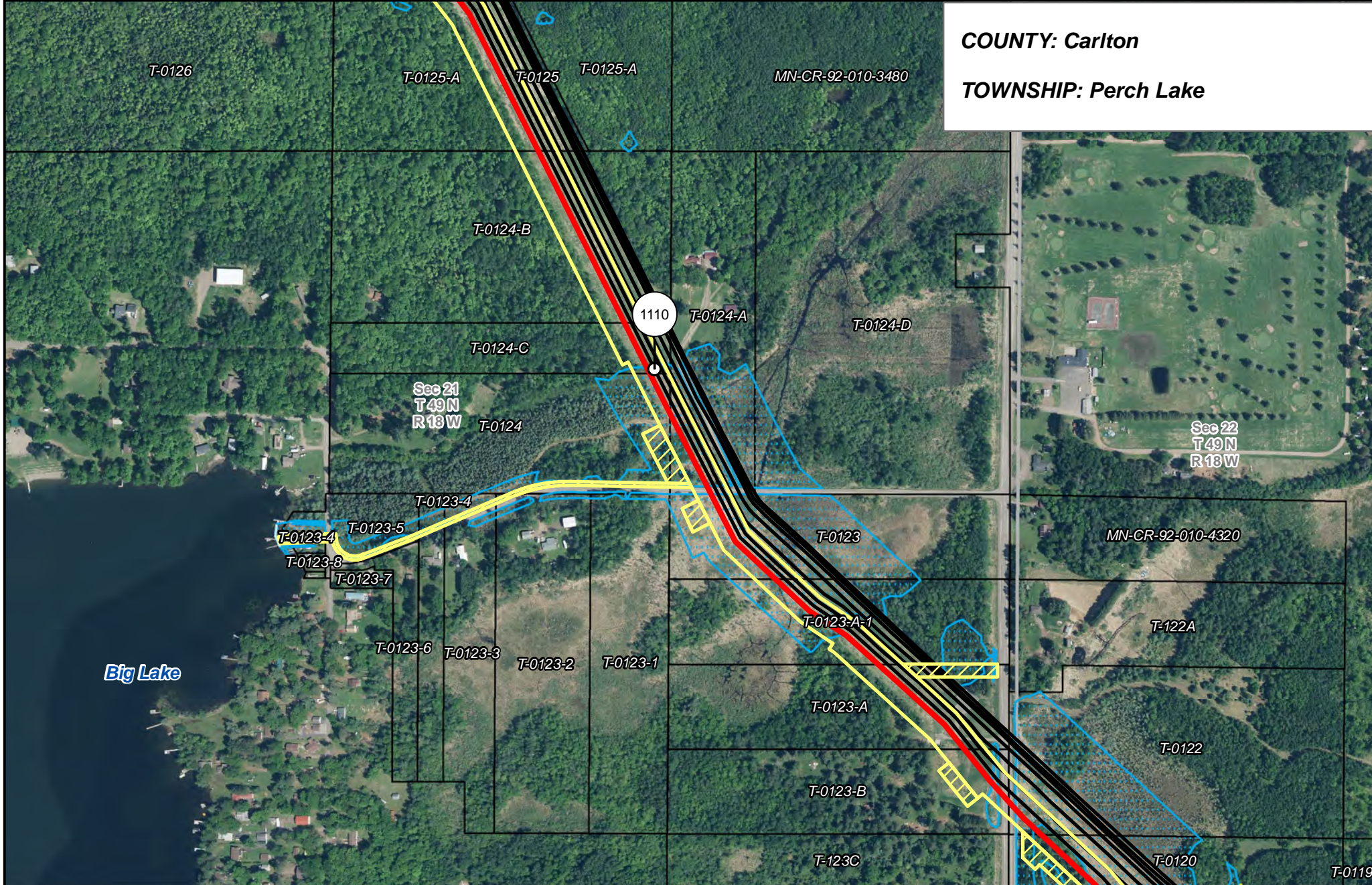
0 250 500 Feet



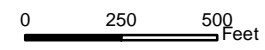
**FOND DU LAC LINE 4
 RELOCATION PROJECT**

DRAWN: CLS CHECKED: —
 DATE: 2/7/2019 SCALE: 1:6,000

COUNTY: Carlton
TOWNSHIP: Perch Lake



Fond du Lac Line 4 Relocation	Mile Post	Surveyed Waterbodies	Tract Boundary
Valve Location	Temporary Workspace	ESA	MN Section Boundary
Additional Temporary Workspace	Surveyed Wetlands	Township/City Boundary	County Boundary
Existing Enbridge Pipelines	NWI Wetlands		
Existing Electric Transmission			
Existing Third Party Pipelines			

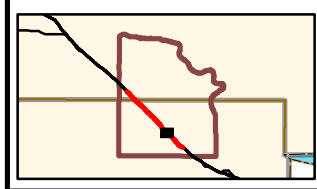
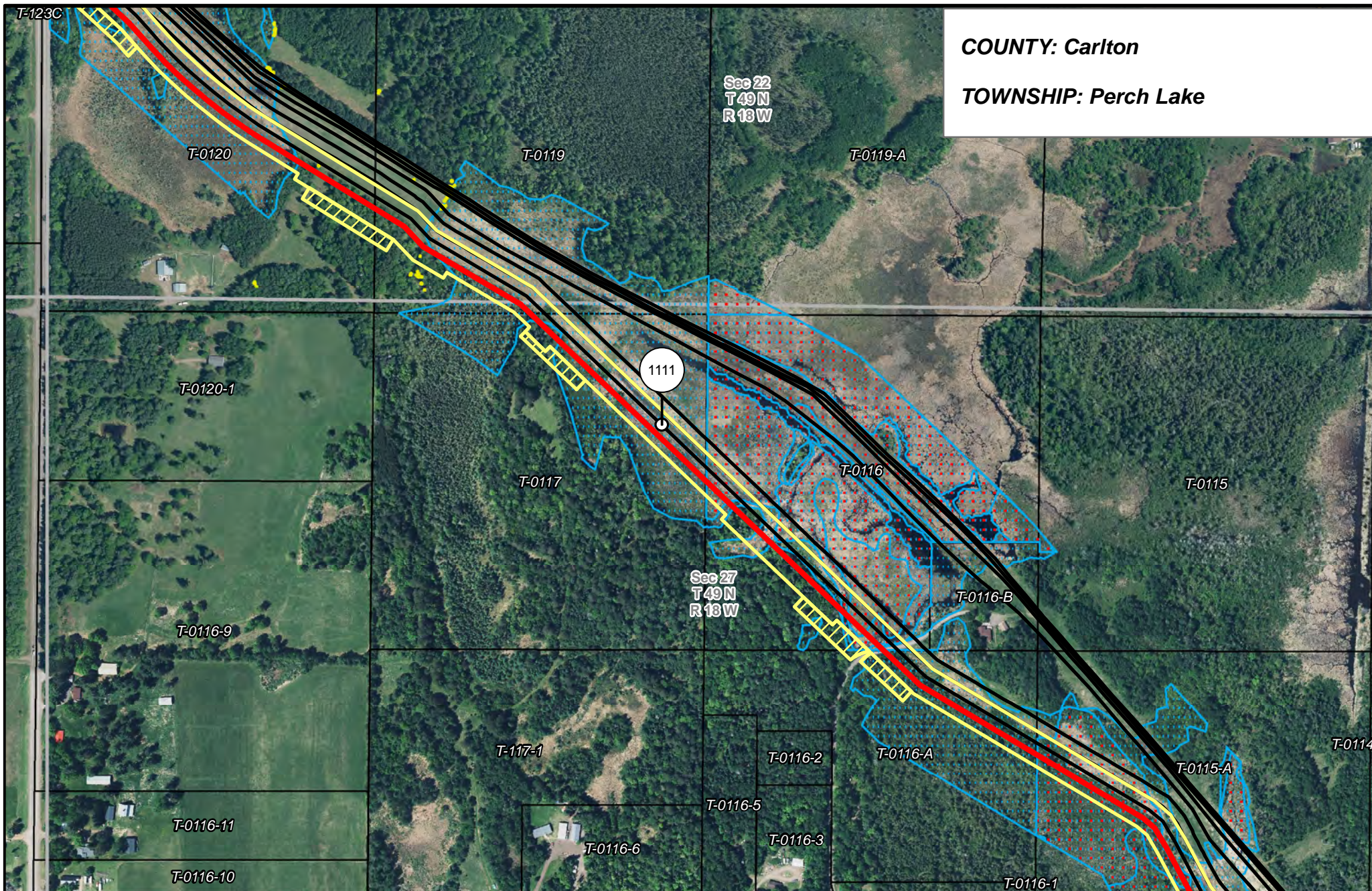


**FOND DU LAC LINE 4
RELOCATION PROJECT**

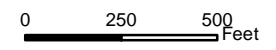
<small>DRAWN:</small> CLS	<small>CHECKED:</small> --
<small>DATE:</small> 2/7/2019	<small>SCALE:</small> 1:6,000

Map 8 of 12

COUNTY: Carlton
TOWNSHIP: Perch Lake



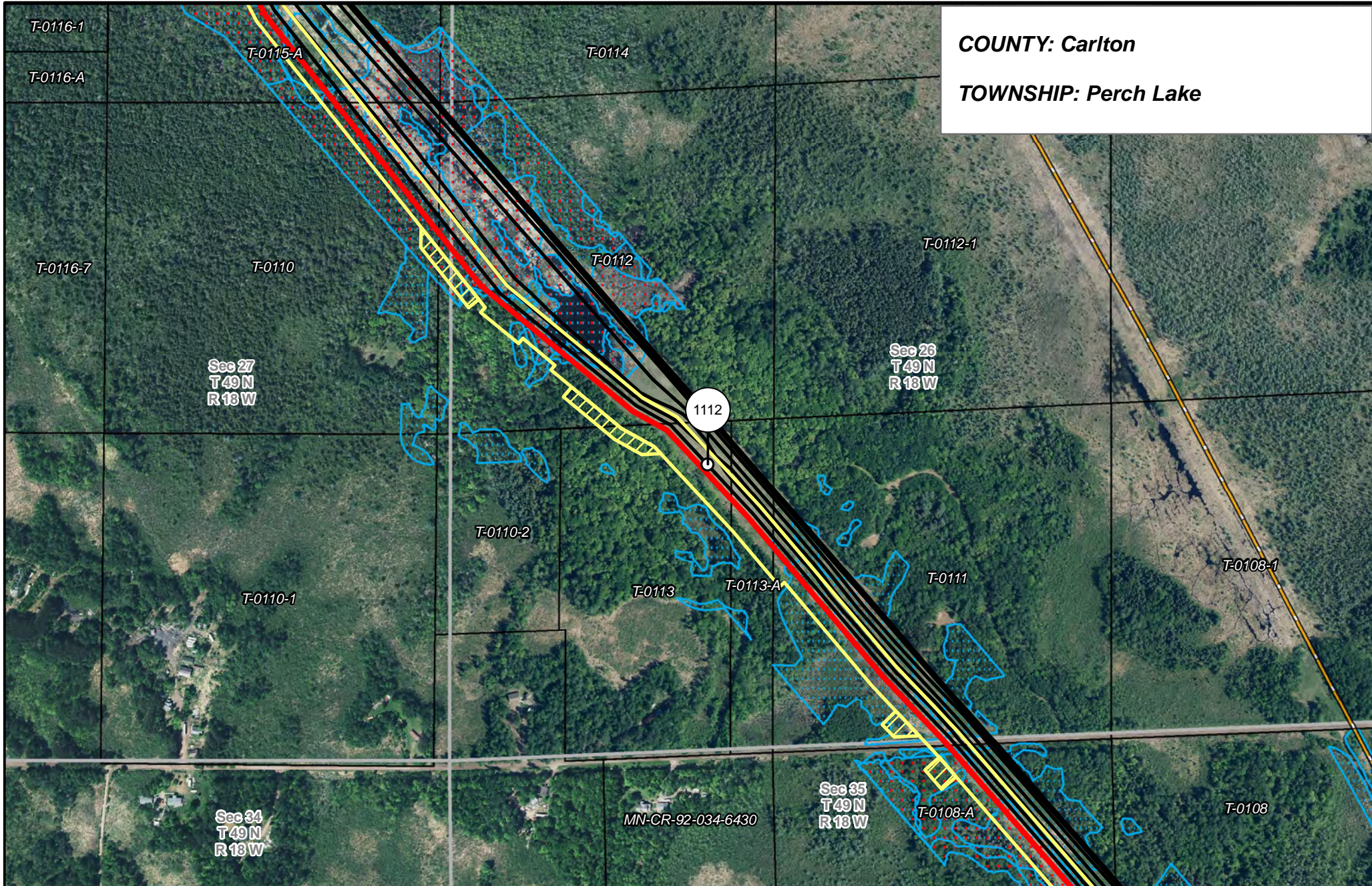
Fond du Lac Line 4 Relocation	Mile Post	Surveyed Waterbodies	Tract Boundary
Valve Location	Temporary Workspace	ESA	MN Section Boundary
	Additional Temporary Workspace	Surveyed Wetlands	Township/City Boundary
	Existing Enbridge Pipelines	NWI Wetlands	County Boundary
	Existing Electric Transmission		
	Existing Third Party Pipelines		



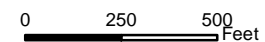
**FOND DU LAC LINE 4
RELOCATION PROJECT**

DRAWN: CLS CHECKED: --
DATE: 2/7/2019 SCALE: 1:6,000

COUNTY: Carlton
TOWNSHIP: Perch Lake



Fond du Lac Line 4 Relocation	Mile Post	Surveyed Waterbodies	Tract Boundary
Valve Location	Temporary Workspace	ESA	MN Section Boundary
	Additional Temporary Workspace	Surveyed Wetlands	Township/City Boundary
	Existing Enbridge Pipelines	NWI Wetlands	County Boundary
	Existing Electric Transmission		
	Existing Third Party Pipelines		



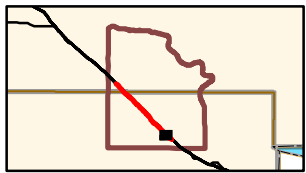
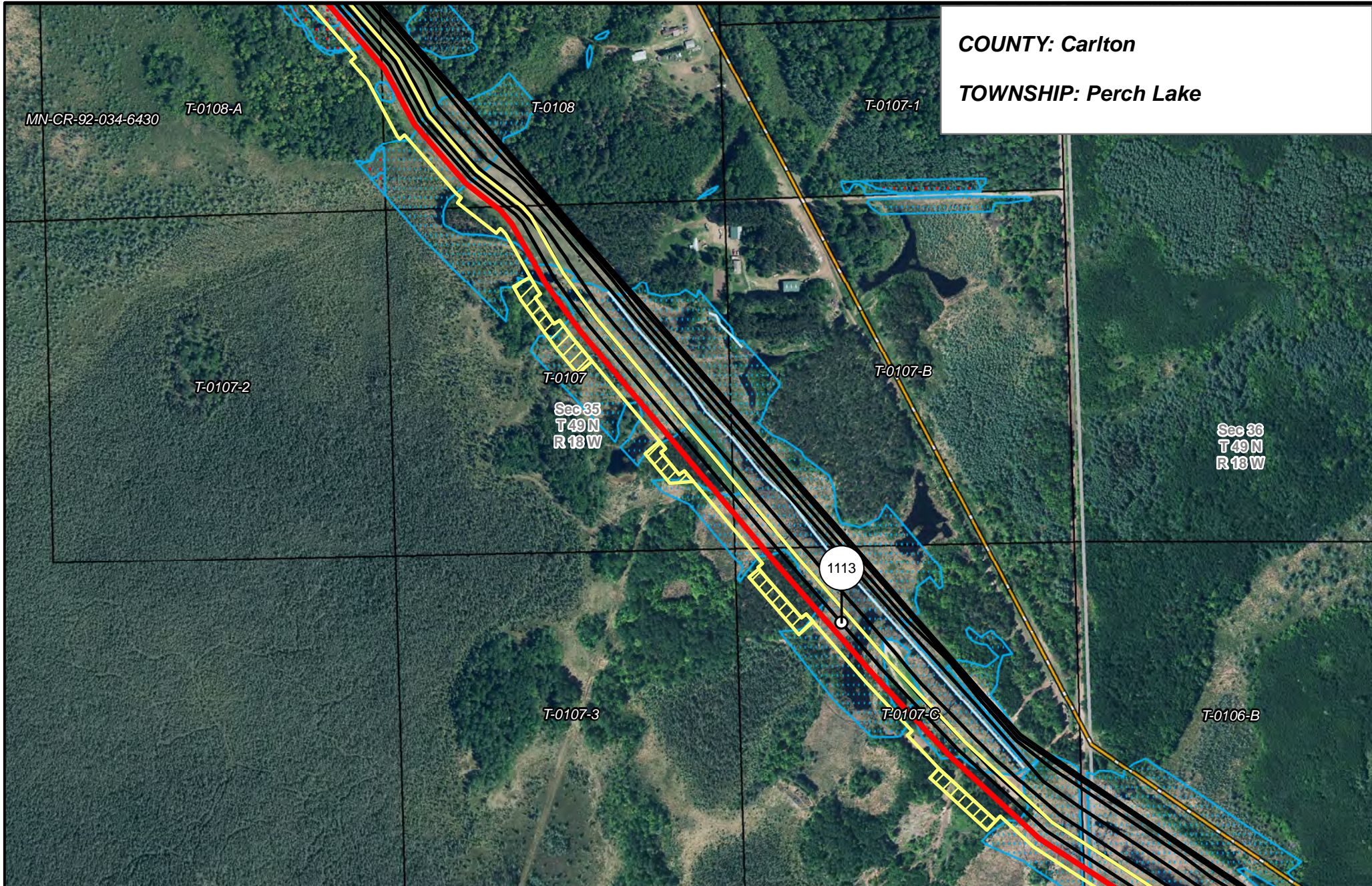
**FOND DU LAC LINE 4
RELOCATION PROJECT**

<small>DRAWN:</small> CLS	<small>CHECKED:</small> --
<small>DATE:</small> 2/7/2019	<small>SCALE:</small> 1:6,000

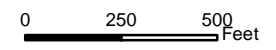
Map 10 of 12

COUNTY: Carlton

TOWNSHIP: Perch Lake



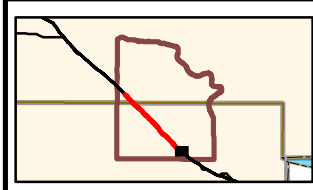
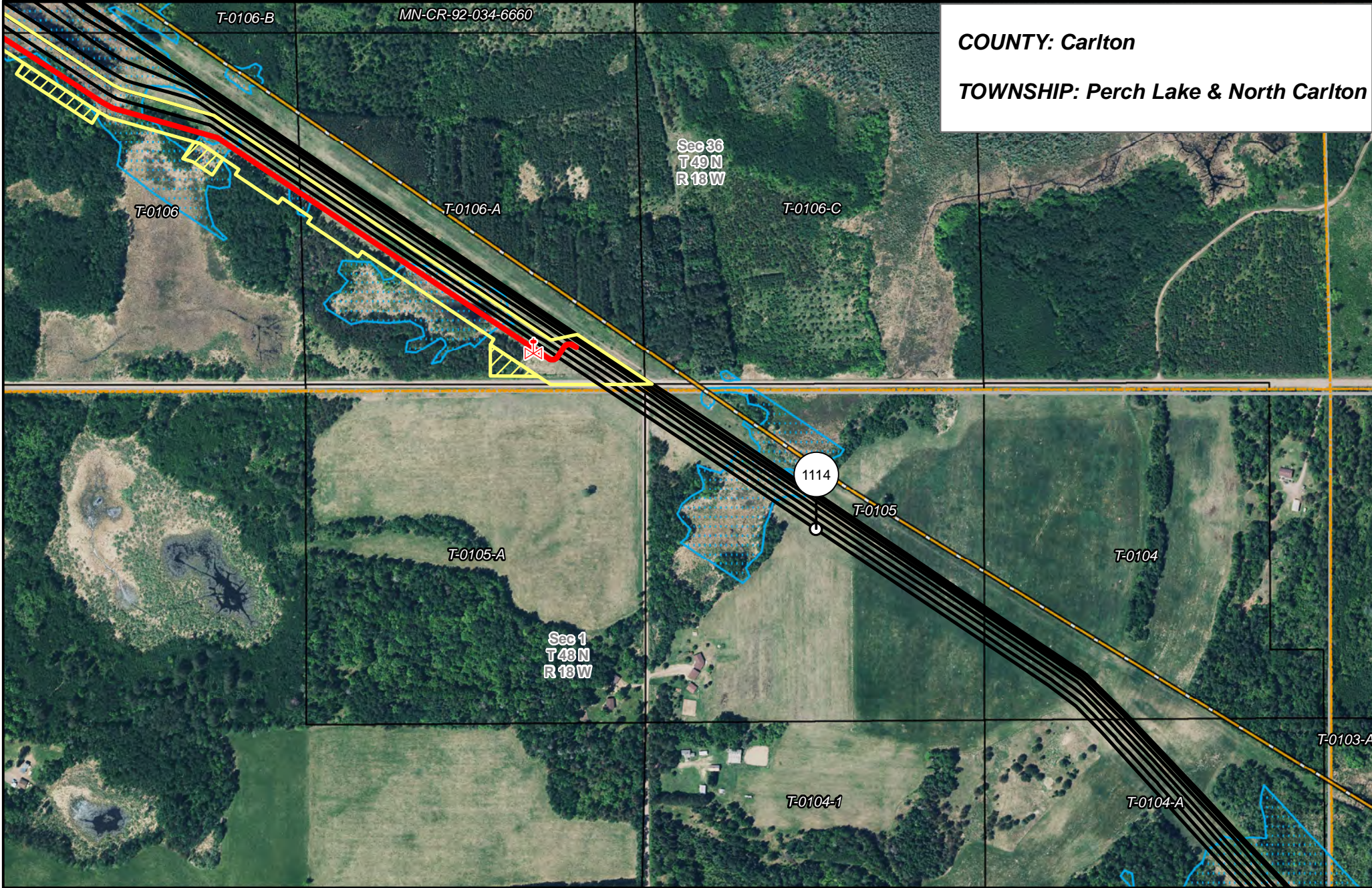
- Fond du Lac Line 4 Relocation
- Valve Location
- Mile Post
- Temporary Workspace
- Additional Temporary Workspace
- Existing Enbridge Pipelines
- Existing Electric Transmission
- Existing Third Party Pipelines
- Surveyed Waterbodies
- ESA
- Surveyed Wetlands
- NWI Wetlands
- Tract Boundary
- MN Section Boundary
- Township/City Boundary
- County Boundary



FOND DU LAC LINE 4
RELOCATION PROJECT

DRAWN: CLS CHECKED: --
DATE: 2/7/2019 SCALE: 1:6,000
Map 11 of 12

COUNTY: Carlton
TOWNSHIP: Perch Lake & North Carlton



Fond du Lac Line 4 Relocation	Mile Post	Surveyed Waterbodies	Tract Boundary
Valve Location	Temporary Workspace	ESA	MN Section Boundary
Additional Temporary Workspace	Existing Enbridge Pipelines	Surveyed Wetlands	Township/City Boundary
Existing Electric Transmission	NWI Wetlands	County Boundary	
Existing Third Party Pipelines			

0 250 500
 Feet



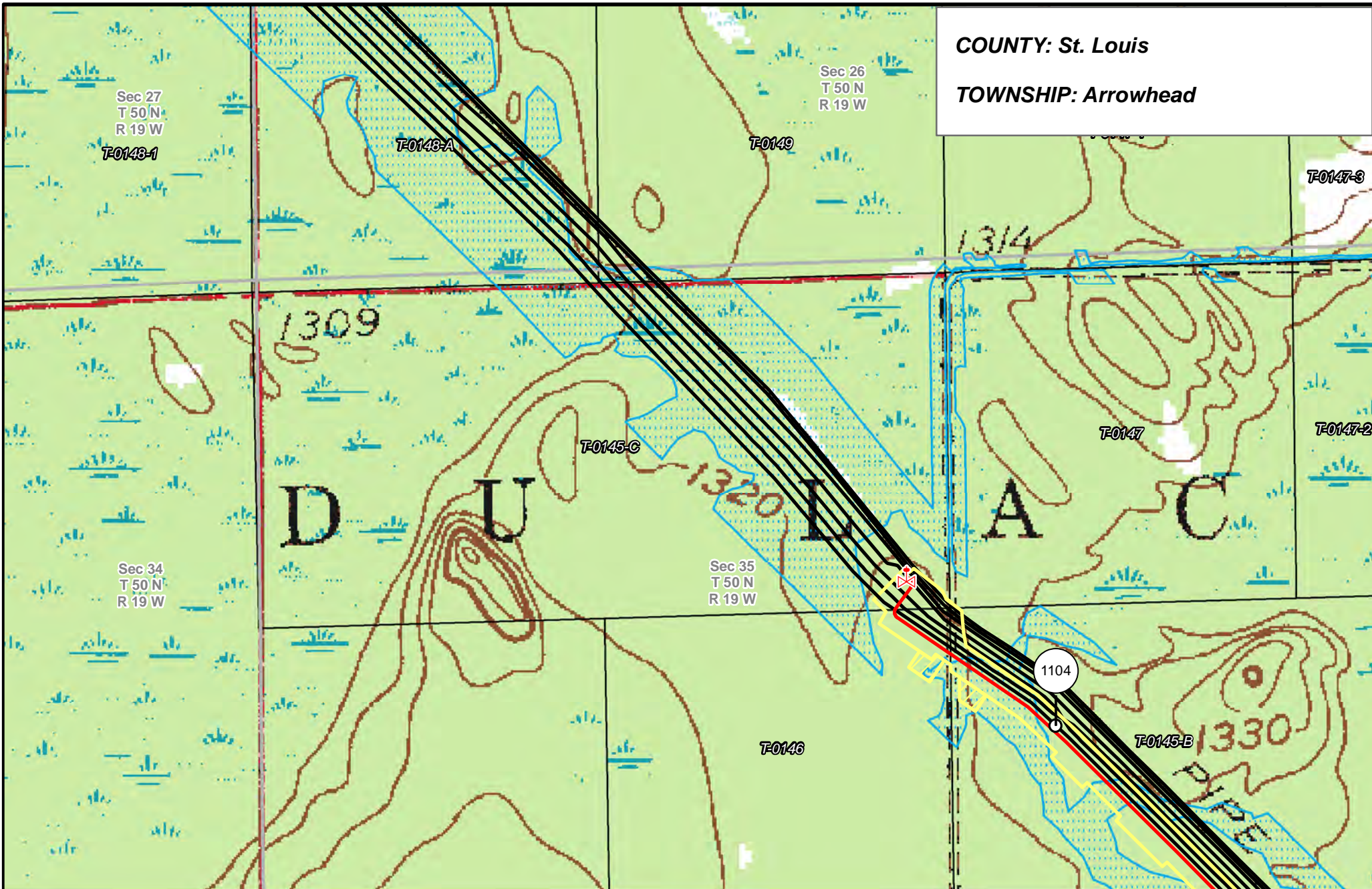
**FOND DU LAC LINE 4
 RELOCATION PROJECT**

<small>DRAWN:</small> CLS	<small>CHECKED:</small> --
<small>DATE:</small> 2/7/2019	<small>SCALE:</small> 1:6,000

Map 12 of 12

COUNTY: St. Louis

TOWNSHIP: Arrowhead



— Fond du Lac Line 4 Relocation
⊗ Valve Location

○ Mile Post
□ Temporary Workspace
□ Additional Temporary Workspace
— Existing Enbridge Pipelines
— Existing Electric Transmission
— Existing Third Party Pipelines

— Surveyed Waterbodies
▨ ESA
▨ Surveyed Wetlands
▨ NWI Wetlands

□ Tract Boundary
□ MN Section Boundary
□ Township/City Boundary
□ County Boundary

0 250 500 Feet

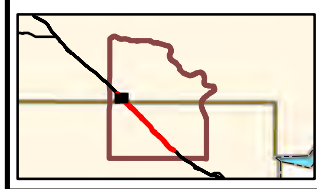
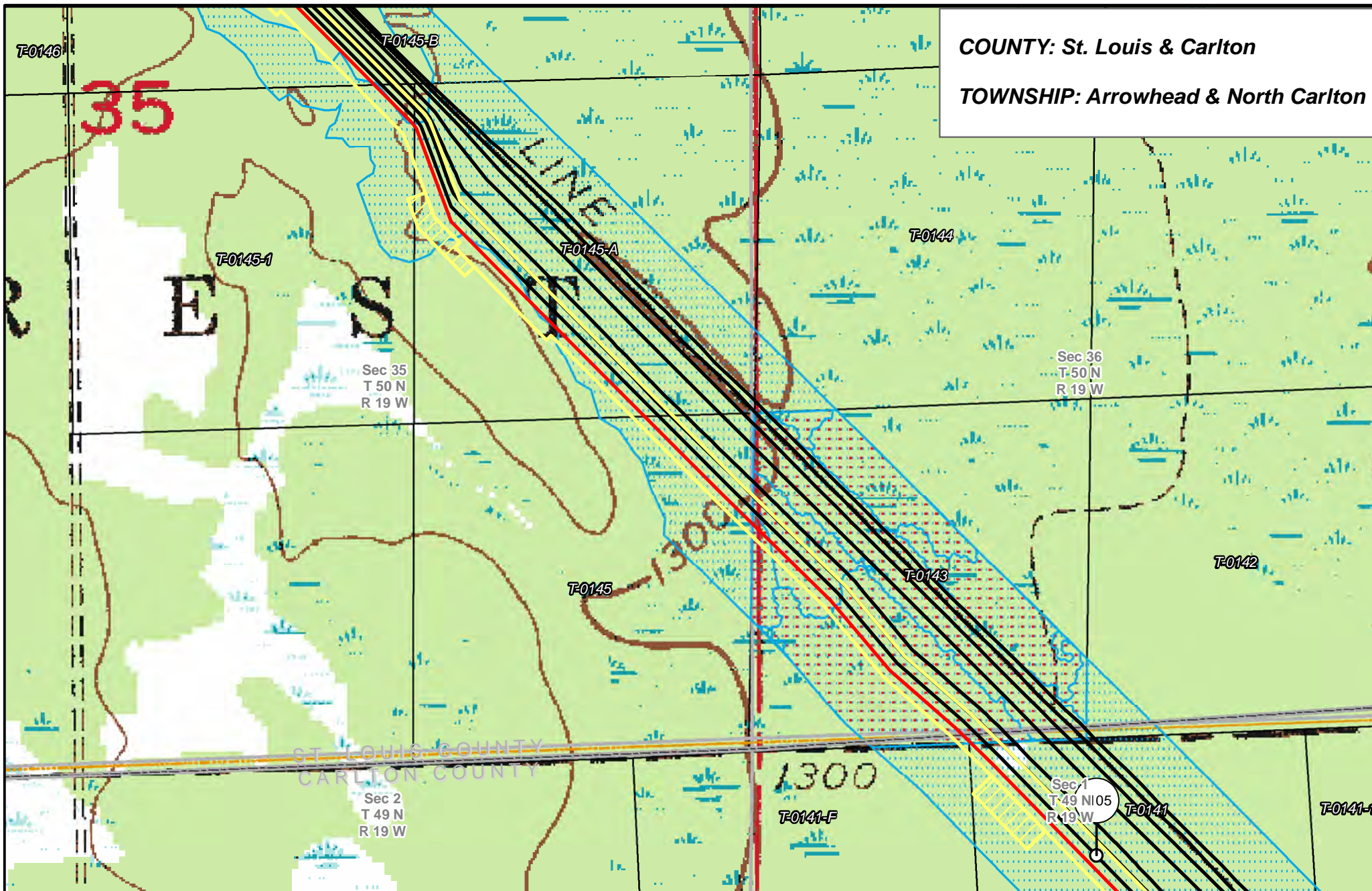


FOND DU LAC LINE 4
RELOCATION PROJECT

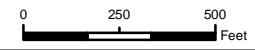
DRAWN: CLS CHECKED: —
DATE: 2/7/2019 SCALE: 1:6,000

Map 1 of 12

COUNTY: St. Louis & Carlton
TOWNSHIP: Arrowhead & North Carlton



- | | | | |
|-------------------------------|--------------------------------|----------------------|------------------------|
| Fond du Lac Line 4 Relocation | Mile Post | Surveyed Waterbodies | Tract Boundary |
| Valve Location | Temporary Workspace | ESA | MN Section Boundary |
| | Additional Temporary Workspace | Surveyed Wetlands | Township/City Boundary |
| | Existing Enbridge Pipelines | NWI Wetlands | County Boundary |
| | Existing Electric Transmission | | |
| | Existing Third Party Pipelines | | |

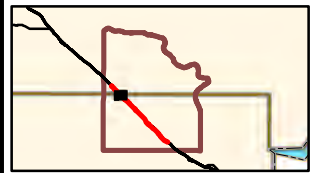
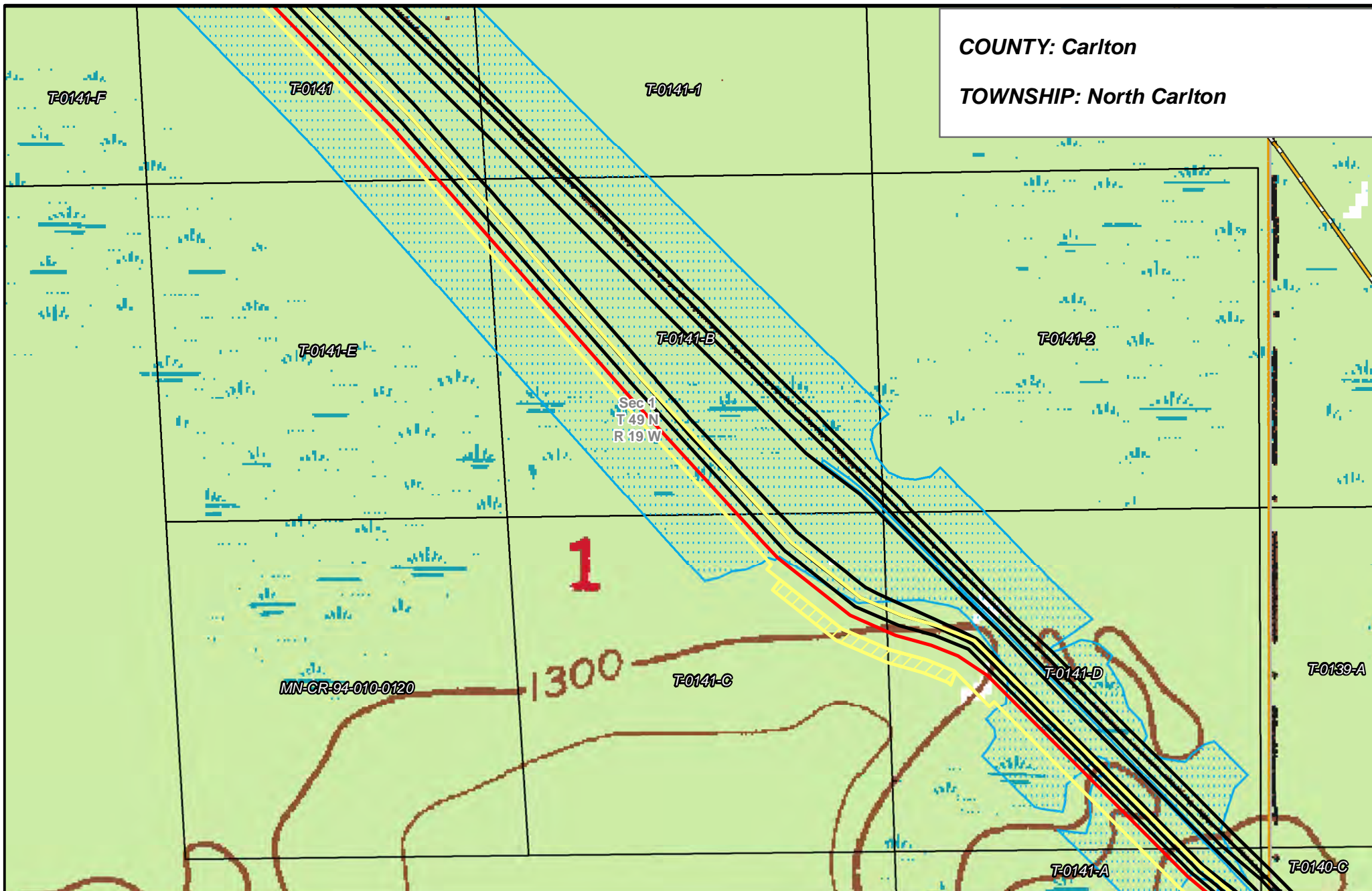


**FOND DU LAC LINE 4
RELOCATION PROJECT**

DRAWN: CLS CHECKED: --
DATE: 2/7/2019 SCALE: 1:6,000

COUNTY: Carlton

TOWNSHIP: North Carlton

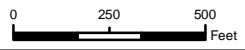


— Fond du Lac Line 4 Relocation
⊠ Valve Location

○ Mile Post
□ Temporary Workspace
▨ Additional Temporary Workspace
— Existing Enbridge Pipelines
— Existing Electric Transmission
— Existing Third Party Pipelines

— Surveged Waterbodies
▨ ESA
▨ Surveged Wetlands
▨ NWI Wetlands

□ Tract Boundary
□ MN Section Boundary
□ Township/City Boundary
□ County Boundary

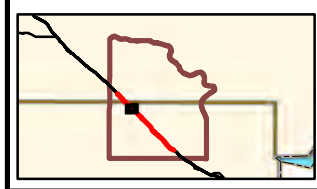
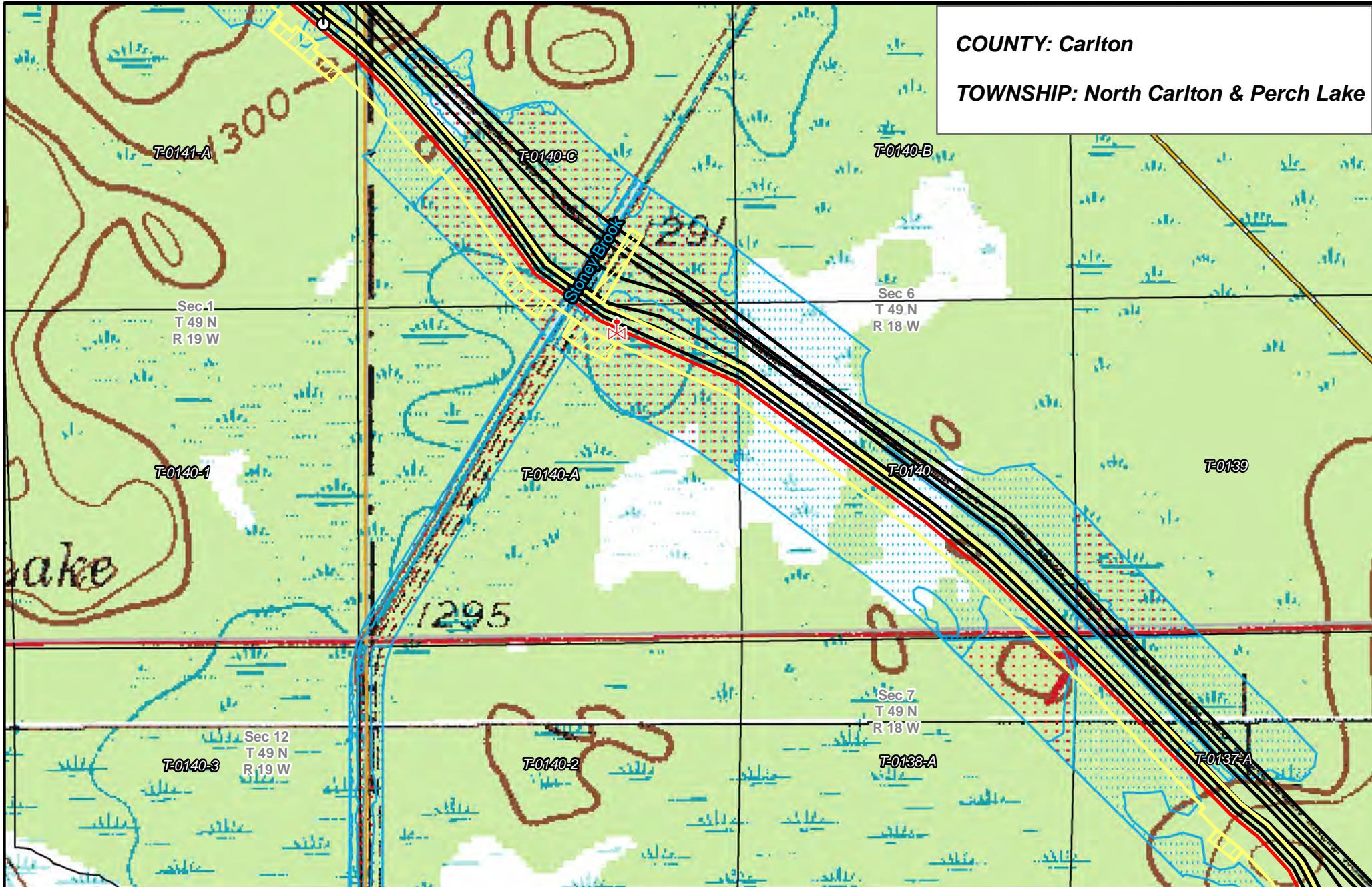


FOND DU LAC LINE 4 RELOCATION PROJECT

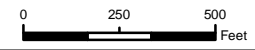
DRAWN: CLS CHECKED: --
DATE: 2/7/2019 SCALE: 1:6,000

COUNTY: Carlton

TOWNSHIP: North Carlton & Perch Lake



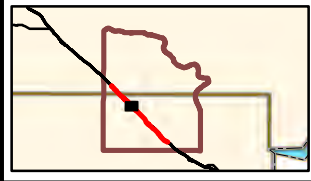
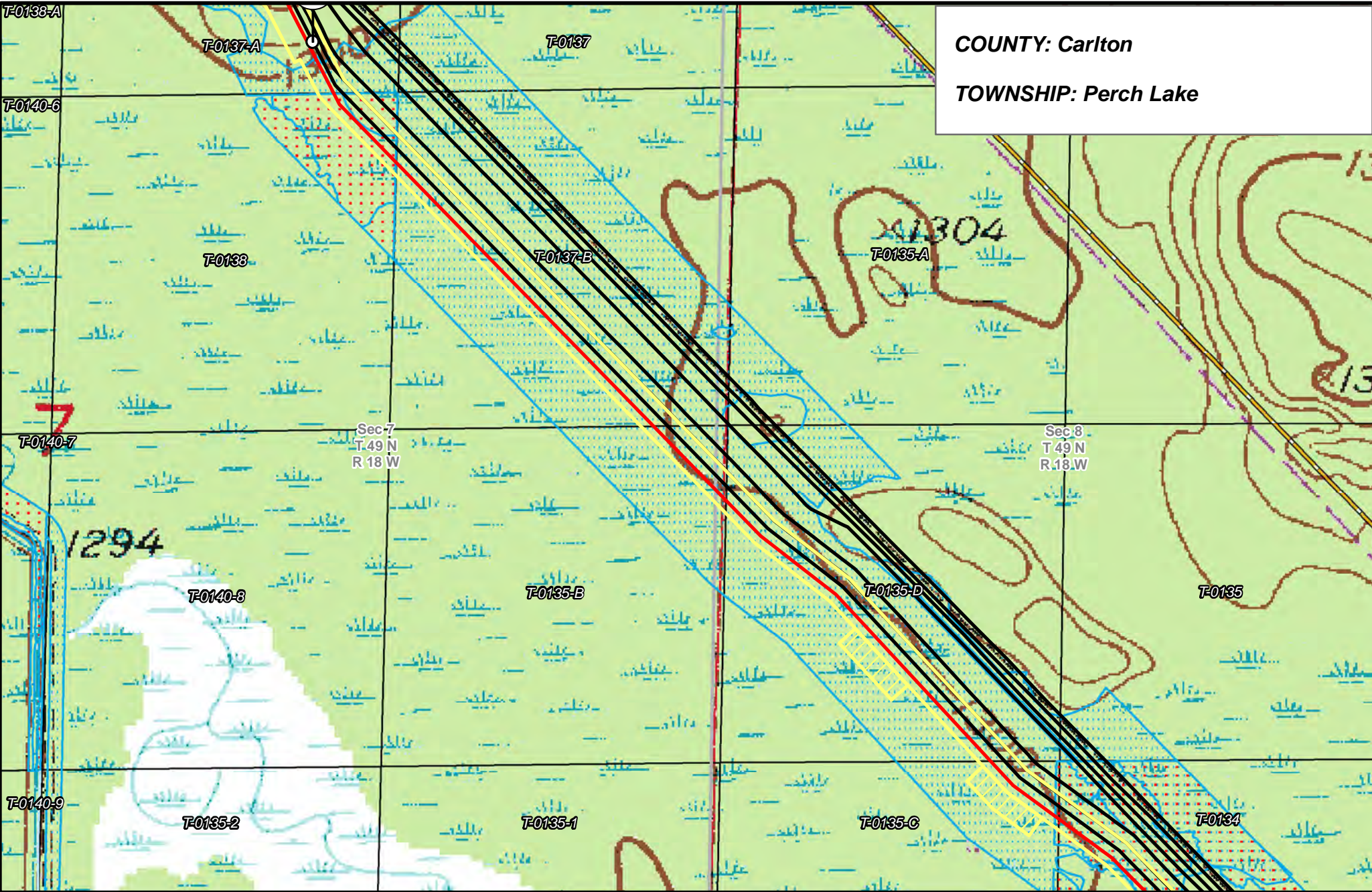
- Fond du Lac Line 4 Relocation
- Valve Location
- Mile Post
- Temporary Workspace
- Additional Temporary Workspace
- Existing Enbridge Pipelines
- Existing Electric Transmission
- Existing Third Party Pipelines
- Surveyed Waterbodies
- ESA
- Surveyed Wetlands
- NWI Wetlands
- Tract Boundary
- MN Section Boundary
- Township/City Boundary
- County Boundary



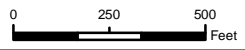
FOND DU LAC LINE 4
RELOCATION PROJECT

DRAWN: CLS CHECKED: --
DATE: 2/7/2019 SCALE: 1:6,000

COUNTY: Carlton
TOWNSHIP: Perch Lake



- Fond du Lac Line 4 Relocation
- Valve Location
- Mile Post
- Temporary Workspace
- Additional Temporary Workspace
- Existing Enbridge Pipelines
- Existing Electric Transmission
- Existing Third Party Pipelines
- Surveyed Waterbodies
- ESA
- Surveyed Wetlands
- NWI Wetlands
- Tract Boundary
- MN Section Boundary
- Township/City Boundary
- County Boundary

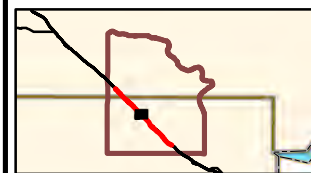
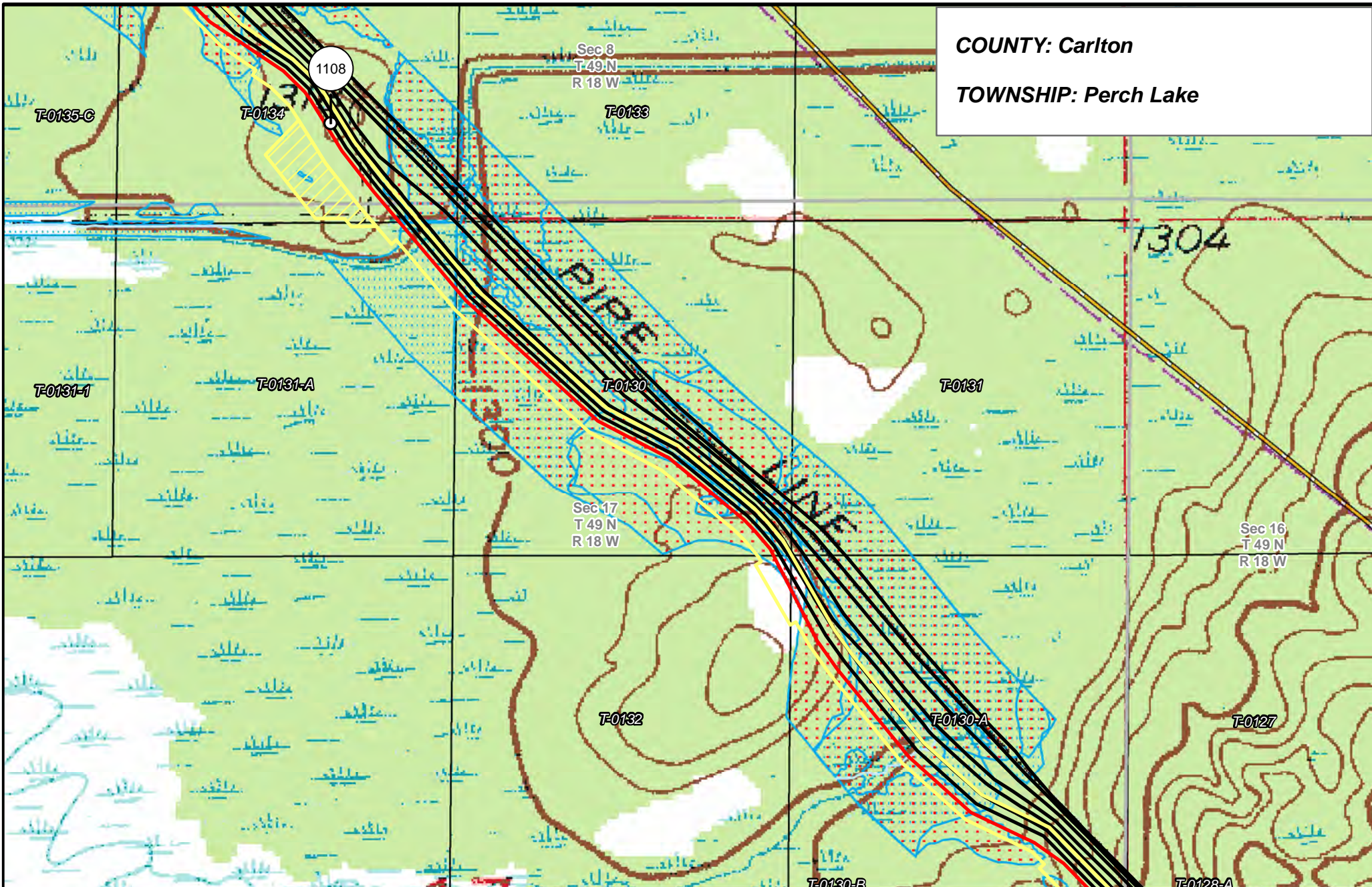


**FOND DU LAC LINE 4
RELOCATION PROJECT**

DRAWN: CLS CHECKED: --
DATE: 2/7/2019 SCALE: 1:6,000

COUNTY: Carlton

TOWNSHIP: Perch Lake

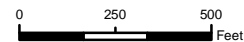


- Fond du Lac Line 4 Relocation
- Valve Location

- Mile Post
- Temporary Workspace
- Additional Temporary Workspace
- Existing Enbridge Pipelines
- Existing Electric Transmission
- Existing Third Party Pipelines

- Surveyed Waterbodies
- ESA
- Surveyed Wetlands
- NWI Wetlands

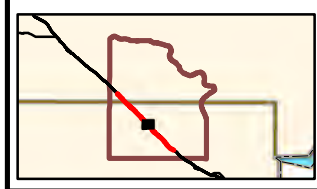
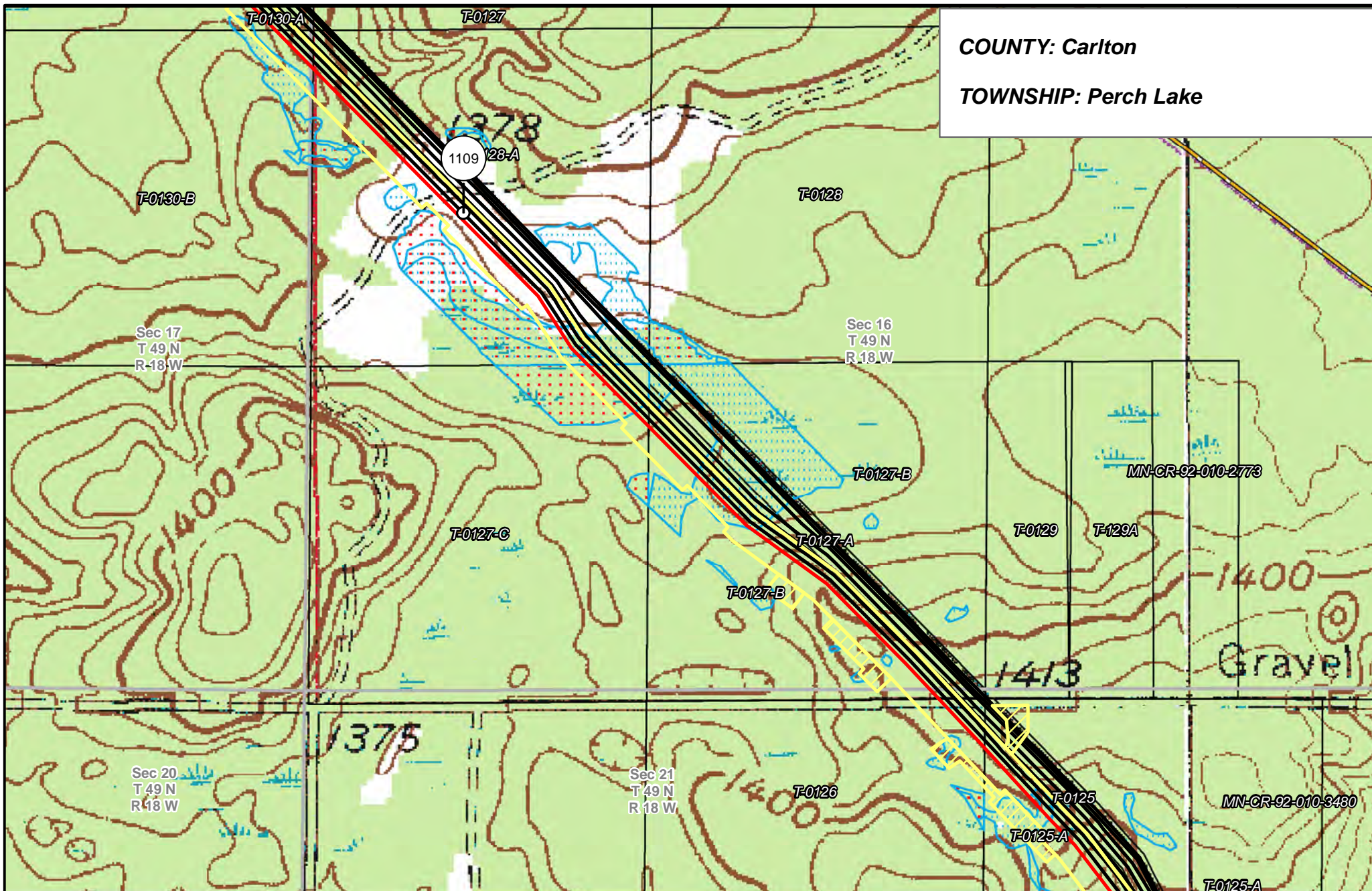
- Tract Boundary
- MN Section Boundary
- Township/City Boundary
- County Boundary



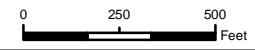
FOND DU LAC LINE 4
RELOCATION PROJECT

DRAWN: CLS CHECKED: --
DATE: 2/7/2019 SCALE: 1:6,000

COUNTY: Carlton
TOWNSHIP: Perch Lake



Fond du Lac Line 4 Relocation	Mile Post	Surveyed Waterbodies	Tract Boundary
Valve Location	Temporary Workspace	ESA	MN Section Boundary
Additional Temporary Workspace	Surveyed Wetlands	Surveyed Wetlands	Township/City Boundary
Existing Enbridge Pipelines	NWI Wetlands	NWI Wetlands	County Boundary
Existing Electric Transmission			
Existing Third Party Pipelines			



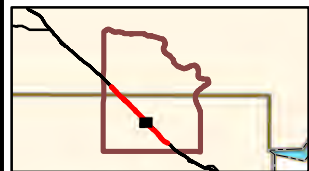
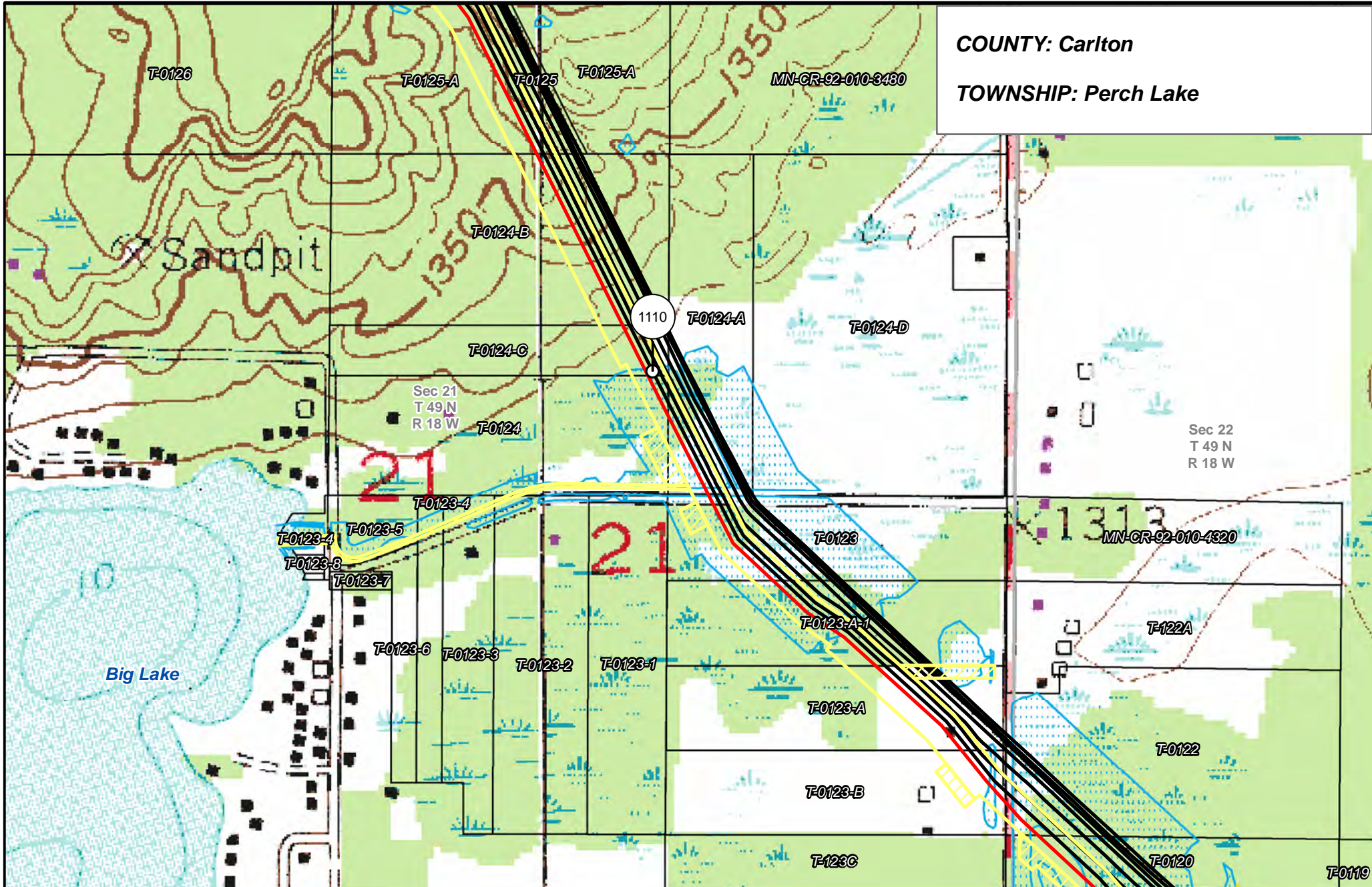
**FOND DU LAC LINE 4
RELOCATION PROJECT**

<small>DRAWN:</small> CLS	<small>CHECKED:</small> --
<small>DATE:</small> 2/7/2019	<small>SCALE:</small> 1:6,000

Map 7 of 12

COUNTY: Carlton

TOWNSHIP: Perch Lake



— Fond du Lac Line 4 Relocation
⊕ Valve Location

○ Mile Post
□ Temporary Workspace
□ Additional Temporary Workspace
— Existing Enbridge Pipelines
— Existing Electric Transmission
— Existing Third Party Pipelines

— Surveyed Waterbodies
— ESA
— Surveyed Wetlands
— NWI Wetlands

□ Tract Boundary
□ MN Section Boundary
□ Township/City Boundary
□ County Boundary

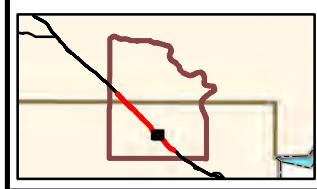
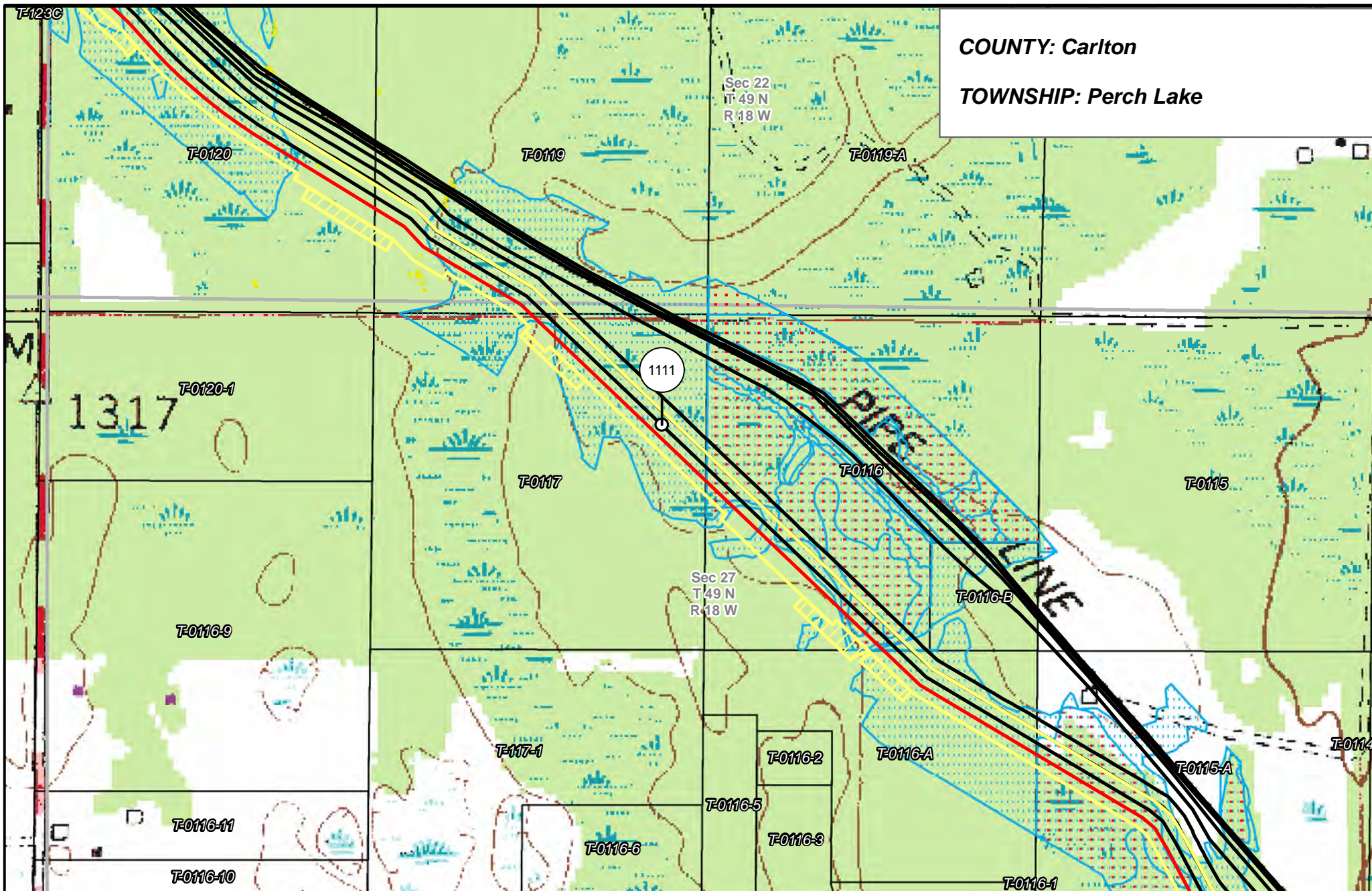
0 250 500 Feet



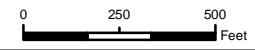
FOND DU LAC LINE 4 RELOCATION PROJECT

DRAWN: CLS CHECKED: —
DATE: 2/7/2019 SCALE: 1:6,000

COUNTY: Carlton
TOWNSHIP: Perch Lake



Fond du Lac Line 4 Relocation	Mile Post	Surveyed Waterbodies	Tract Boundary
Valve Location	Temporary Workspace	ESA	MN Section Boundary
	Additional Temporary Workspace	Surveyed Wetlands	Township/City Boundary
	Existing Enbridge Pipelines	NWI Wetlands	County Boundary
	Existing Electric Transmission		
	Existing Third Party Pipelines		

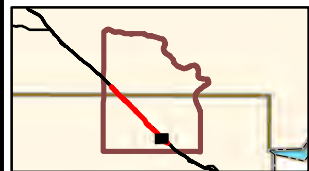
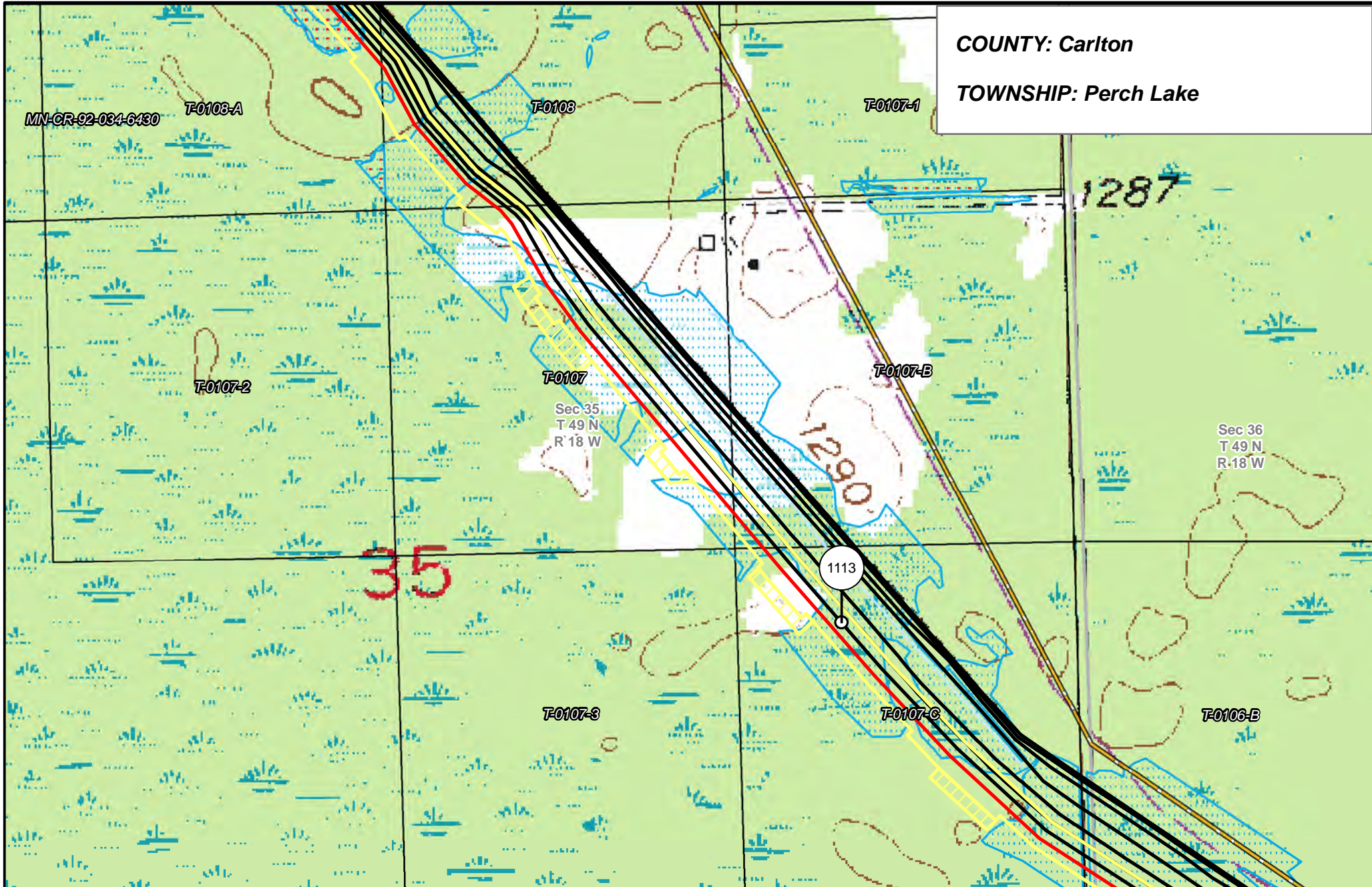


**FOND DU LAC LINE 4
RELOCATION PROJECT**

DRAWN: CLS CHECKED: --
DATE: 2/7/2019 SCALE: 1:6,000

COUNTY: Carlton

TOWNSHIP: Perch Lake

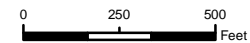


- Fond du Lac Line 4 Relocation
- Valve Location

- Mile Post
- Temporary Workspace
- Additional Temporary Workspace
- Existing Enbridge Pipelines
- Existing Electric Transmission
- Existing Third Party Pipelines

- Surveyed Waterbodies
- ESA
- Surveyed Wetlands
- NWI Wetlands

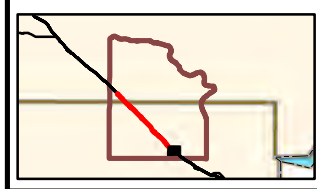
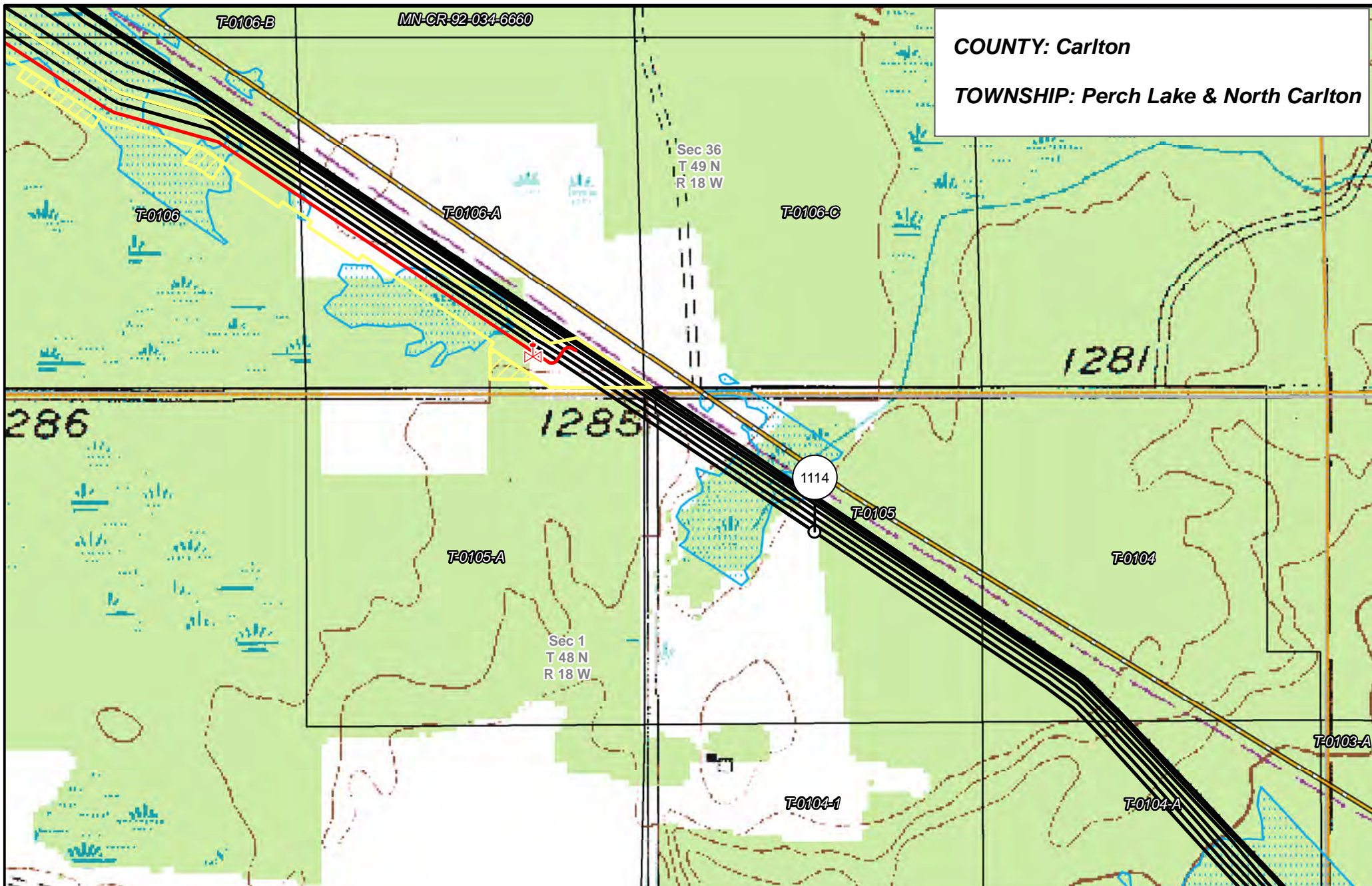
- Tract Boundary
- MN Section Boundary
- Township/City Boundary
- County Boundary



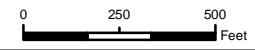
FOND DU LAC LINE 4 RELOCATION PROJECT

DRAWN: CLS CHECKED: --
DATE: 2/7/2019 SCALE: 1:6,000

COUNTY: Carlton
TOWNSHIP: Perch Lake & North Carlton



Fond du Lac Line 4 Relocation	Mile Post	Surveyed Waterbodies	Tract Boundary
Valve Location	Temporary Workspace	ESA	MN Section Boundary
	Additional Temporary Workspace	Surveyed Wetlands	Township/City Boundary
	Existing Enbridge Pipelines	NWI Wetlands	County Boundary
	Existing Electric Transmission		
	Existing Third Party Pipelines		



**FOND DU LAC LINE 4
RELOCATION PROJECT**

<small>DRAWN:</small> CLS	<small>CHECKED:</small> --
<small>DATE:</small> 2/7/2019	<small>SCALE:</small> 1:6,000

Map 12 of 12