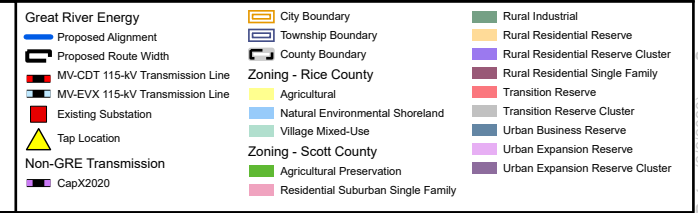
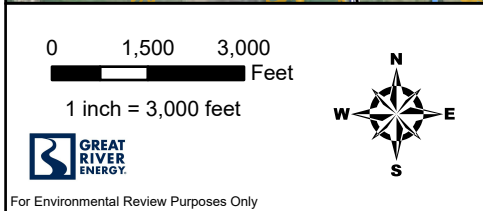
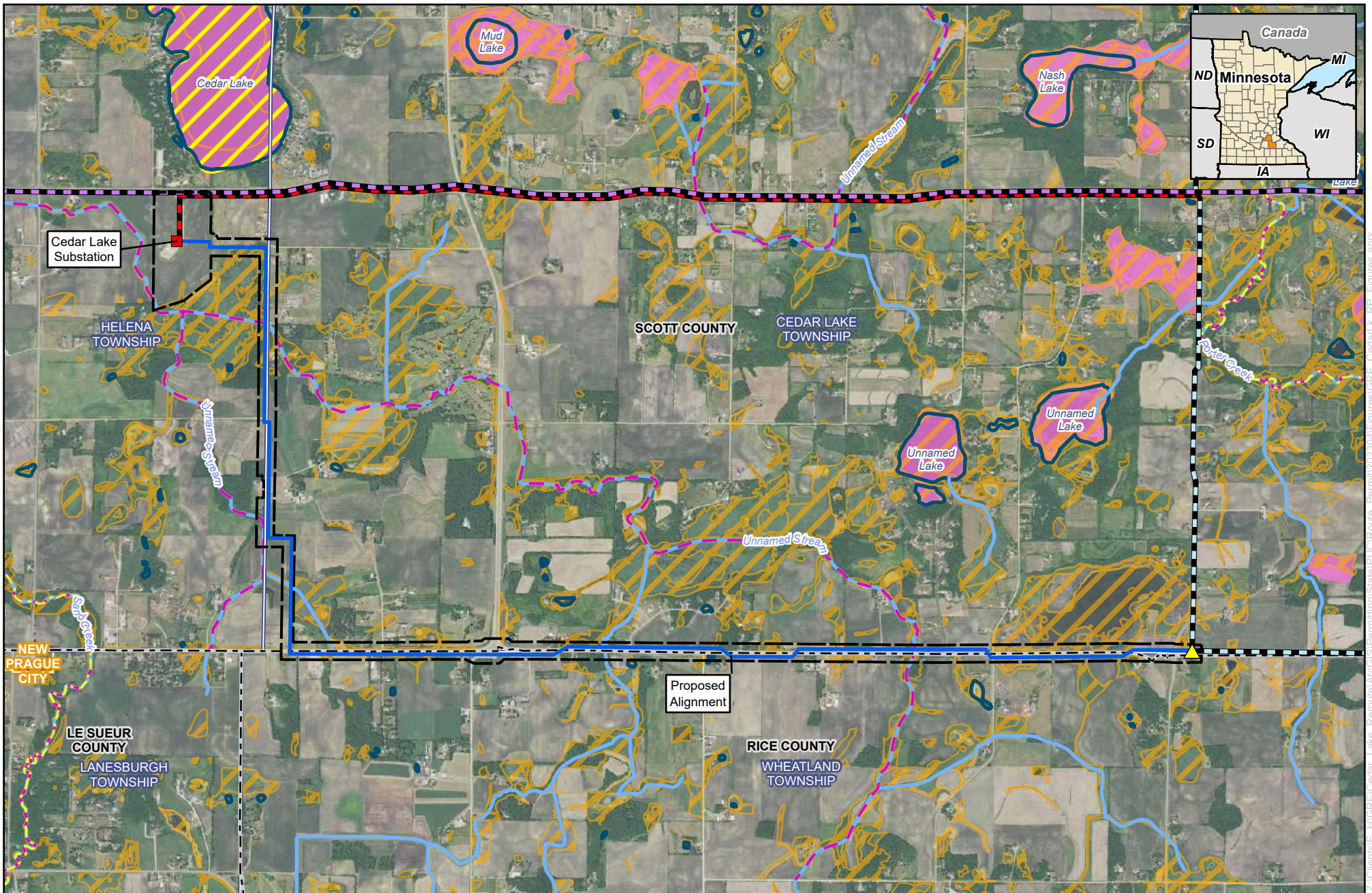


**Figure 6-4**  
**Cedar Lake Reroute Project**  
**Zoning**  
**Rice and Scott Counties, Minnesota**

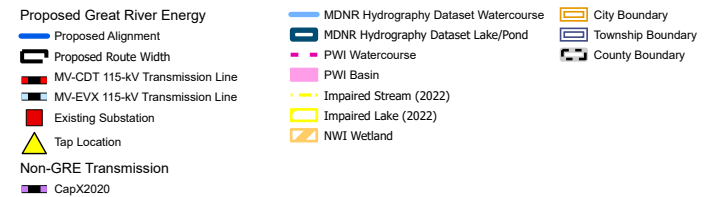


Source: (6/2/2023) Source: Z:\Client\B\_E\_Higher\_Cedar\_Lake\_Reroute\ArcGIS\Permitting\State\PUC\Route\_Figures\GINT\_CedarLK\_RR\_Figures.aprx

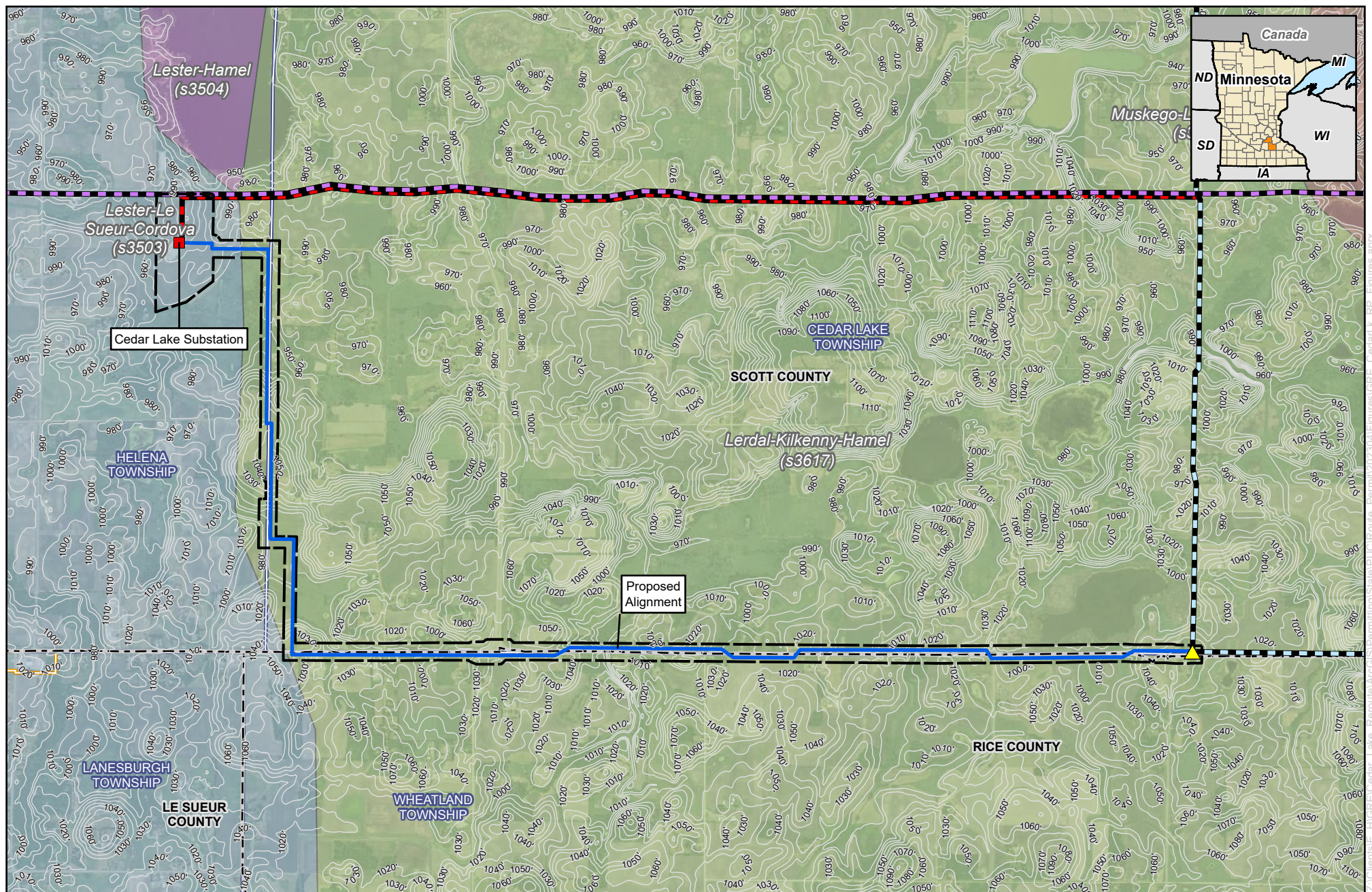




**Figure 6-5**  
**Cedar Lake Reroute Project**  
**Water Features**  
**Rice and Scott Counties, Minnesota**







0 1,500 3,000  
Feet  
1 inch = 3,000 feet



For Environmental Review Purposes Only

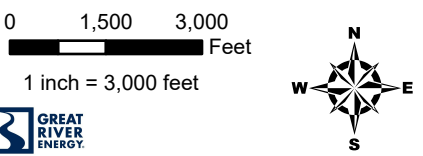


**Figure 6-6**  
**Cedar Lake Reroute Project**  
**Soils**  
**Rice and Scott Counties, Minnesota**

- Proposed Great River Energy**
- Proposed Alignment
  - Proposed Route Width
  - MV-CDT 115-kV Transmission Line
  - MV-EVX 115-kV Transmission Line
  - Existing Substation
  - ▲ Tap Location
  - Non-GRE Transmission
  - CapX2020
- Soils (STATSGO)**
- Lerdal-Kilkenny-Hamel (s3617)
  - Lester-Hamel (s3504)
  - Lester-Le Sueur-Cordova (s3503)
  - Muskego-Lester-Hayden (s3505)
  - City Boundary
  - Township Boundary
  - County Boundary
- 10' Contour**

Source: Z:\Clients\LE\_Cedar\_Lake\_Reroute\MapColorEmulatingState\PUCRoute\_Figure6-6\MapColorEmulatingState\PUCRoute\_Figure6-6.aprx Date: 6/12/2023





**Figure 6-7**  
**Cedar Lake Reroute Project**  
**Current and Reasonably Foreseeable Projects**  
**Rice and Scott Counties, Minnesota**

- |   |   |
|---|---|
| <ul style="list-style-type: none"> <li>Great River Energy           <ul style="list-style-type: none"> <li>Proposed Alignment</li> <li>Existing Substation</li> </ul> </li> <li>Non-GRE Transmission           <ul style="list-style-type: none"> <li>CapX2020 Route</li> <li>Minnesota Valley Distribution Line</li> </ul> </li> </ul> | <ul style="list-style-type: none"> <li>Rice County Jackson Ave / County Road 52 Paving Project</li> <li>Section Boundary</li> <li>City Boundary</li> <li>Township Boundary</li> <li>County Boundary</li> <li>County Highway</li> <li>State Highway</li> </ul> |
|---|---|