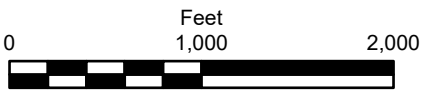
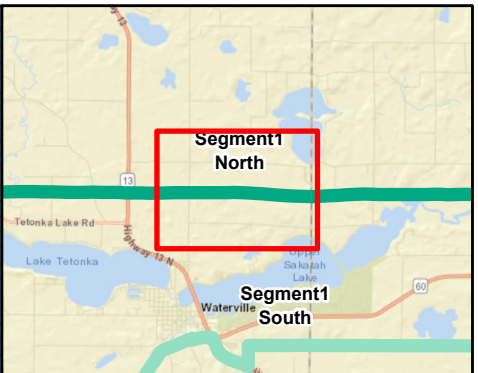
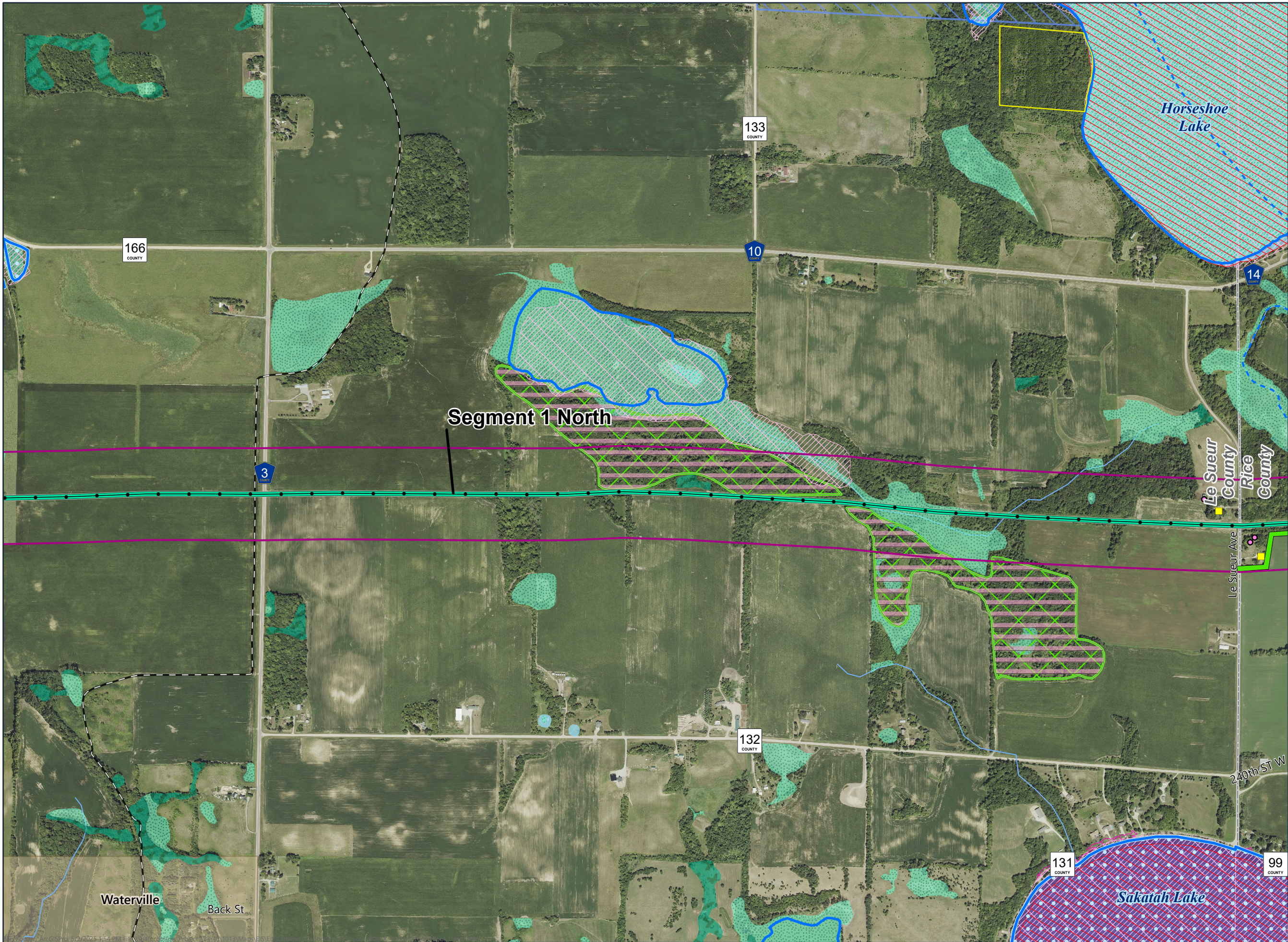


- Segment 1 North
- Other Segments
- Proposed Route Width
- Gravel Pit
- Non-Residential Structure
- Residence Location
- Existing Transmission Line
- State Water Trail
- NHD Watercourse
- Wild and Scenic Recreational Rivers
- PWI Waterbody
- MPCA Impaired Waterbody
- PWI Watercourse
- MPCA Impaired Stream
- Shallow Wildlife Lake
- Forested Wetland
- Non-Forested Wetland
- Floodplains**
  - 100-Year Floodplain
  - 500-Year Floodplain
  - NHD Waterbody
  - State Conservation Easements
  - National Wildlife Refuge
  - Aquatic Management Area
  - Municipal Boundary
- Lakes of Biological Significance**
  - Moderate Significance



**SEGMENT 1  
DETAILED MAPBOOK**  
Mankato - Mississippi River  
Transmission Line Project





- Segment 1 North
- Other Segments
- Proposed Route Width
- Non-Residential Structure
- Residence Location
- Existing Transmission Line
- NHD Watercourse
- Snowmobile Trail
- PWI Waterbody
- MPCA Impaired Waterbody
- PWI Watercourse
- Shallow Wildlife Lake
- Forested Wetland
- Non-Forested Wetland
- Floodplains**
  - 100-Year Floodplain
  - 500-Year Floodplain
  - NHD Waterbody
  - Native Plant Community
  - State Conservation Easements
  - Scientific and Natural Area Boundaries
  - National Wildlife Refuge
  - Aquatic Management Area
  - Municipal Boundary
- Site of Biodiversity Significance**
  - Moderate Significance
- Lakes of Biological Significance**
  - Outstanding Significance

