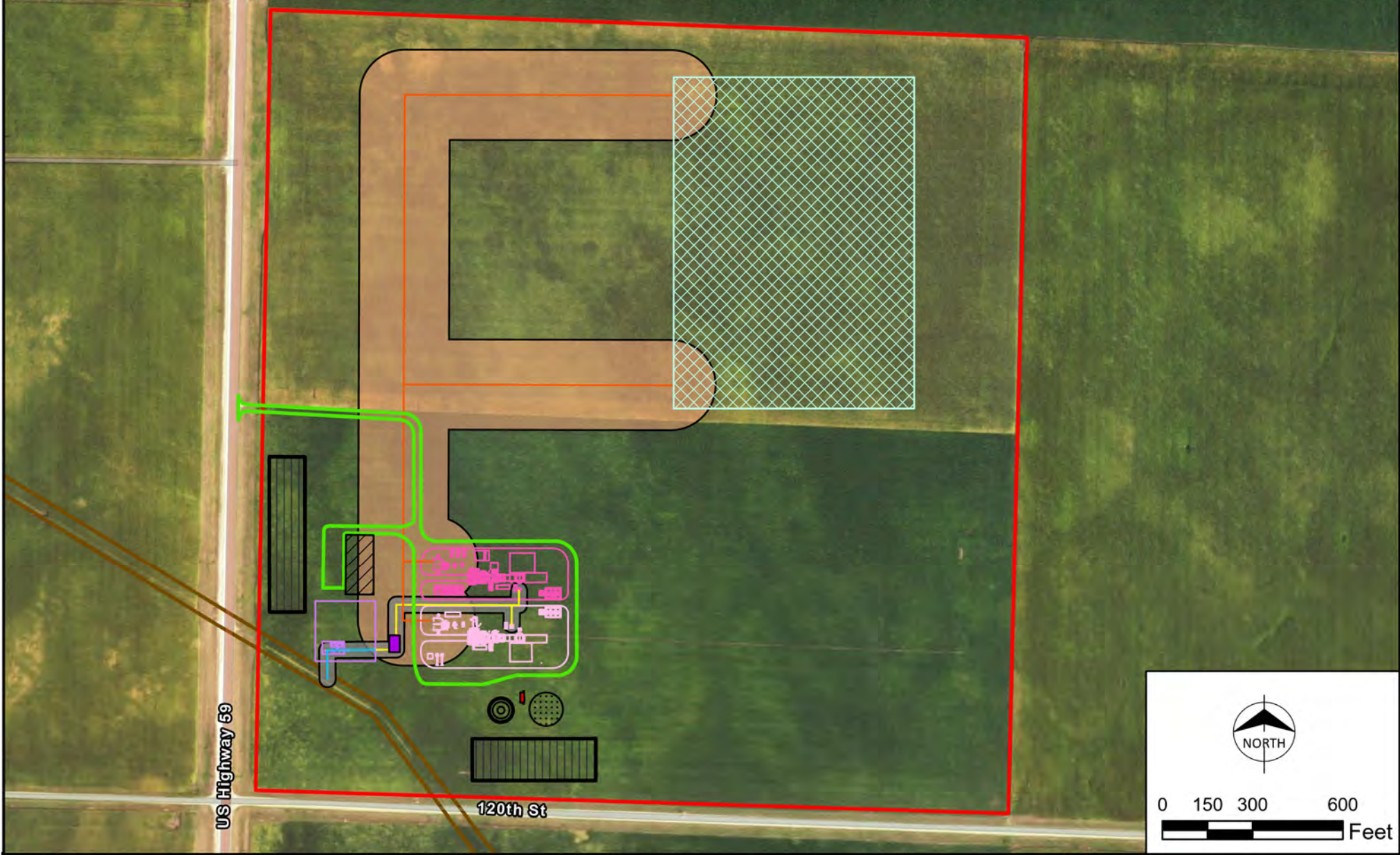


APPENDIX C

Detailed Maps

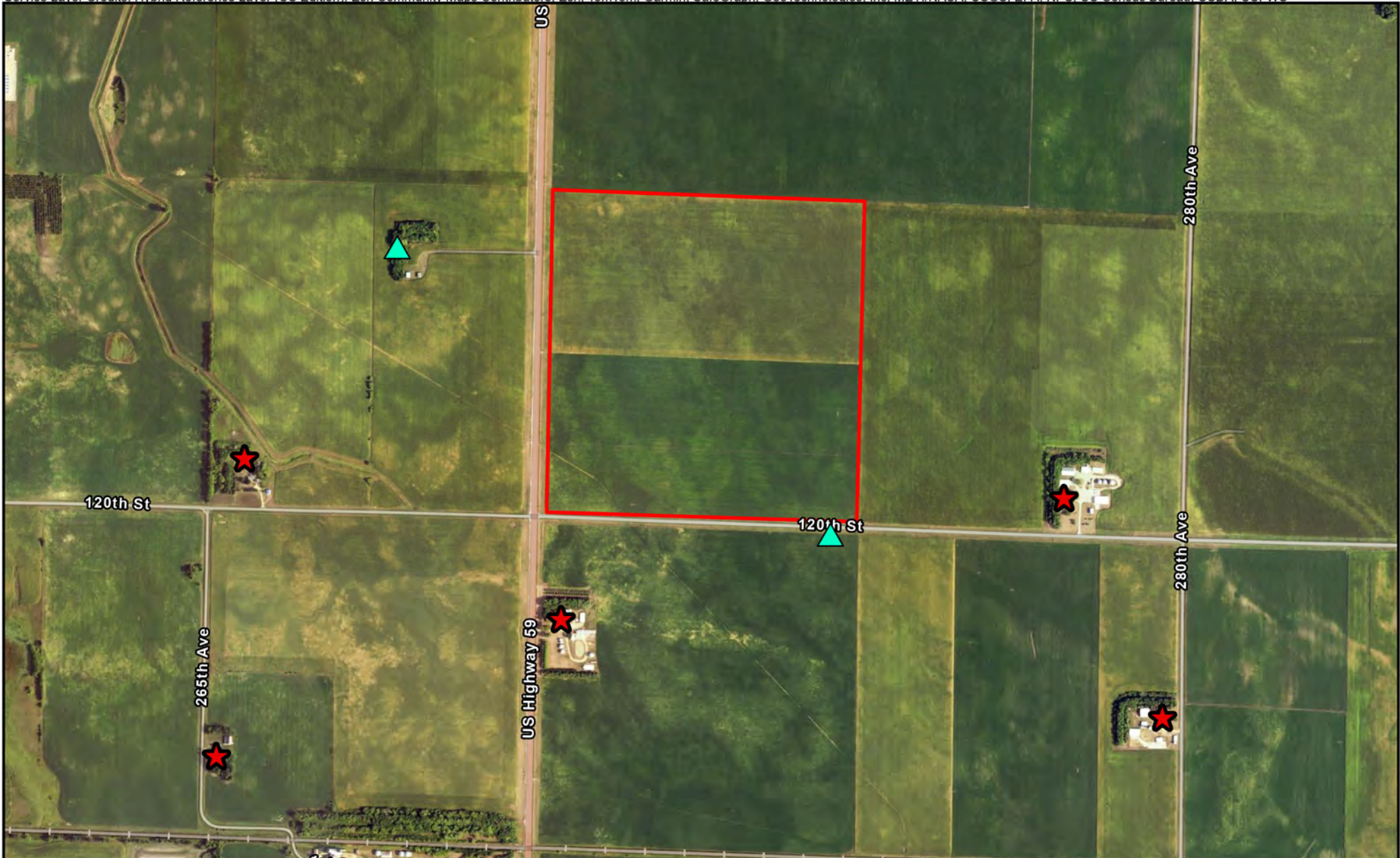
Lyon County Generating Station Project
Combined Application
MPUC Docket Nos. E002/CN-25-145, G002/GS-25-154,
E002/TL-25-161 & G002/GP-25-163
May 2025



Project Boundary	Transmission Line 150 foot Right-of-Way	Water Bath Heater	Combustion Turbine 2 Infrastructure	Gas Pipeline -Northern Border Owned Portion
Site Access	Demin Water Storage	Service Fire Water Tank	Fuel Yard / Fuel Pump (Fenced)	345 kV Transmission Line - Double Circuit
Administrative Building	Existing Northern Boarder Pipeline	Stormwater Pond	Gas Pipeline - Xcel Energy Owned Portion	
Gas Pipeline 54 foot Right-of-Way	Fire Pump	Garvin Substation	Combustion Turbine 1 Infrastructure	



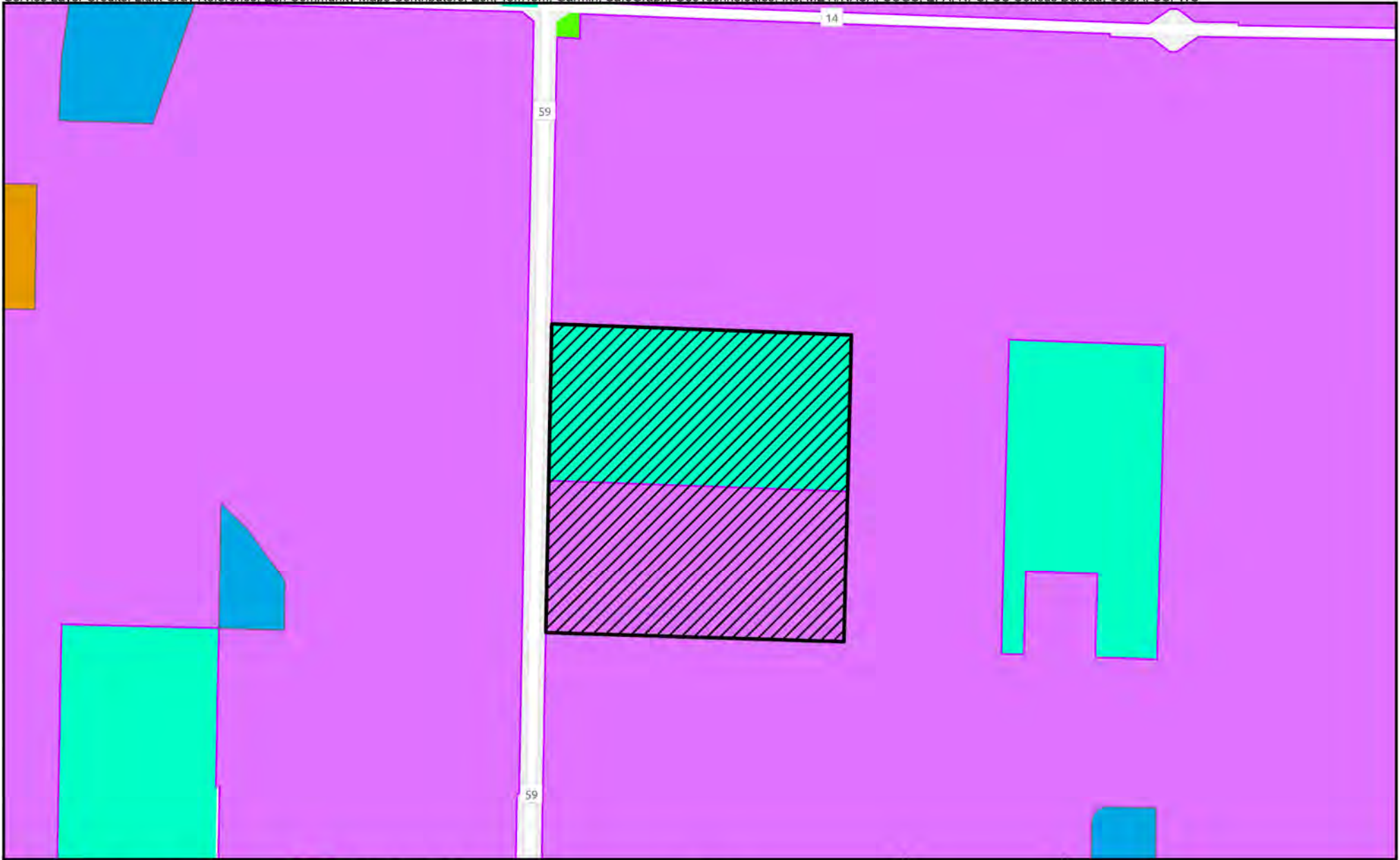
Figure 1-2
Site Layout
 Lyon County Generating Station



Project Boundary	 NORTH		<p>Figure 7-1 Noise Monitoring Measurement Locations and Residences Lyon County Generating Station</p>
Noise Measurement Location	 0 500 1,000 2,000 Feet		
Residences within 0.5 miles			



Project Boundary	Developed, Low Intensity	<p>0 250 500 1,000 Feet</p>		<p align="center">Figure 7-2 Land Use Classification Lyon County Generating Station</p>
<p>Land Use Classification</p> Cultivated Crops Deciduous Forest	Developed, Medium Intensity Developed, Open Space			



Lyon County Zoning Type

- AGRICULTURE
- LAND/BLD-P UT
- RESIDENTIAL\S
- 1 TO 3 UNIT D
- AG NON-CONTIG
- Project Boundary





NORTH

0 500 1,000 2,000 US Feet



Figure 7-3
Lyon County Zoning Map
Lyon County Generating Station



-  Project Boundary
-  Existing Northern Boarder Pipeline
-  US Highways
-  Local Roads

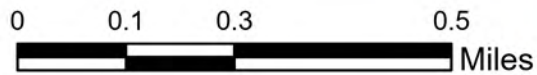
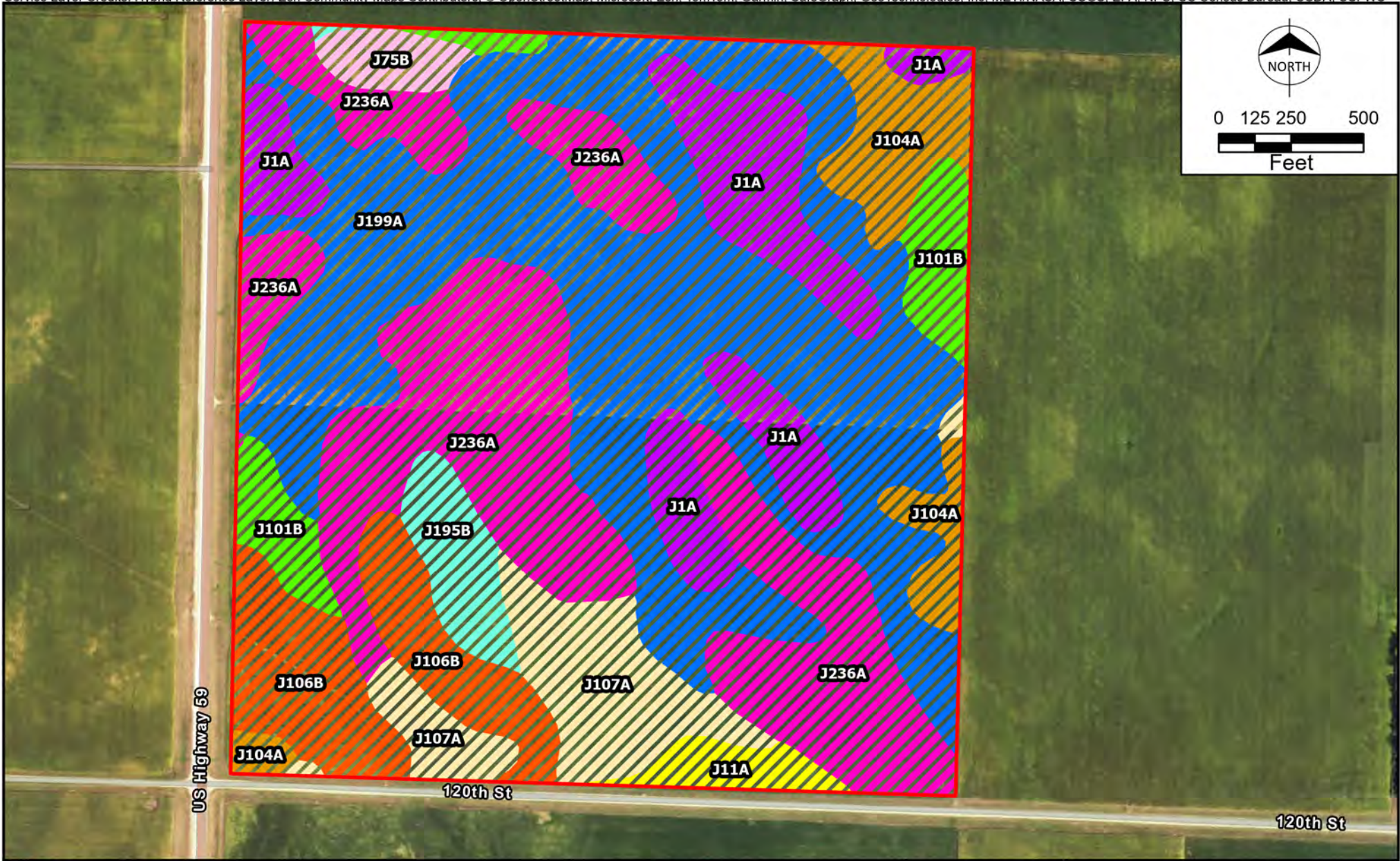


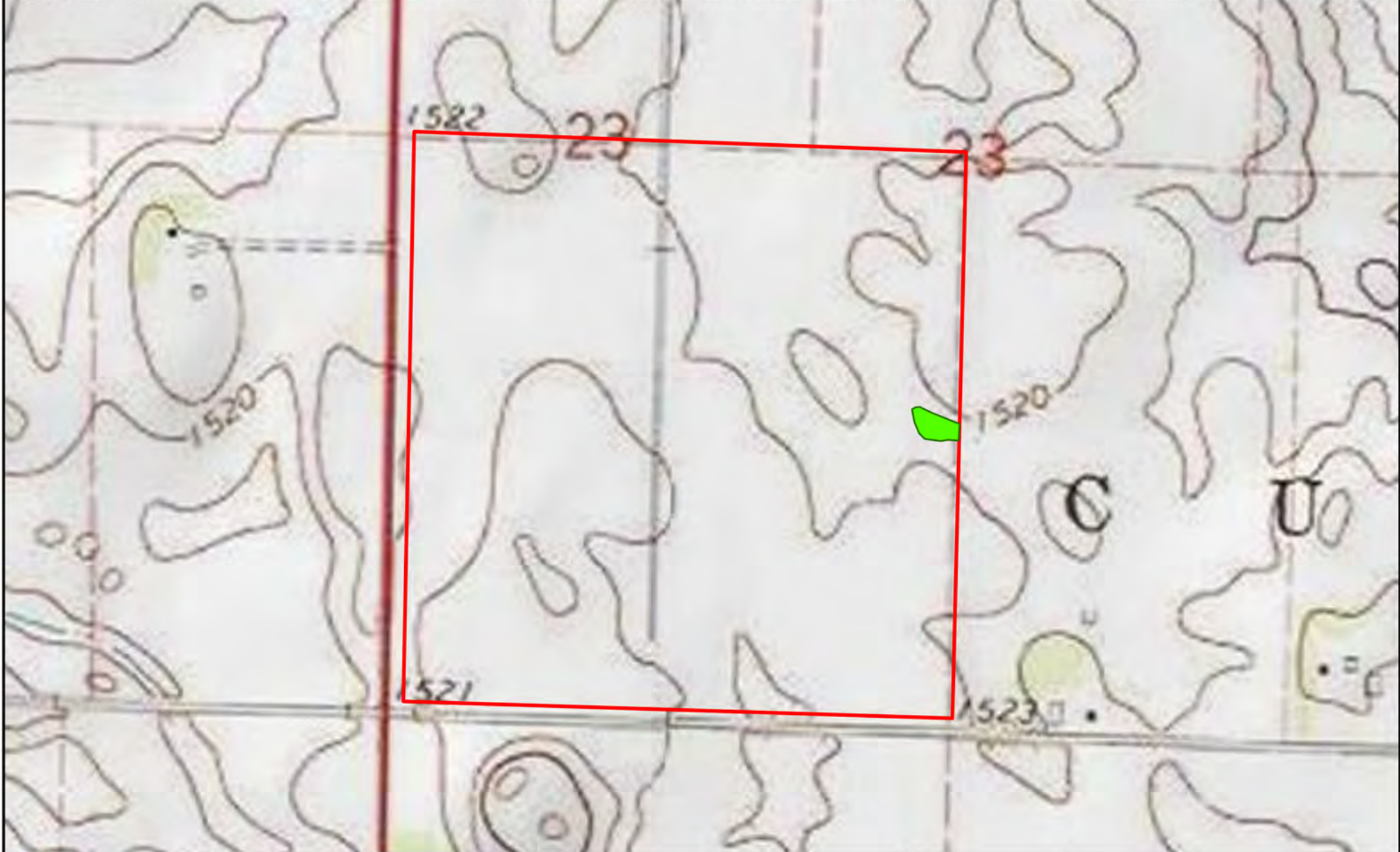
Figure 7-4
Transportation Map &
Existing Infrastructure
Lyon County Generating Station





Soil Type	Description	Description	Description
Project Boundary	J106B - Barnes, occasional saturation-Buse-Svea complex, 1 to 6 percent slopes	J11A - Vallery clay loam, 0 to 2 percent slopes	J1A - Parnell silty clay loam, depressional, 0 to 2 percent slopes
J101B - Hokans-Svea complex, 1 to 4 percent slopes	J195B - Poinsett-Waubay silty clay loams, 1 to 6 percent slopes	J236A - Highpoint Lake silty clay, 0 to 2 percent slopes	J75B - Renshaw - Fordville loams, coteau, 2 to 6 percent slopes
J104A - Svea loam, 1 to 3 percent slopes	J107A - Lakepark-Roliss-Parnell, depressional, 0 to 3 percent slopes	J199A - Fulda silty clay, 0 to 2 percent slopes	J96C2 - Barnes-Buse complex, 6 to 12 percent slopes, moderately eroded



Figure 7-10
Soil Type Map
 Lyon County Generating Station



-  Project Boundary
-  Delineated Wetlands

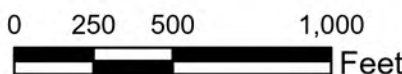
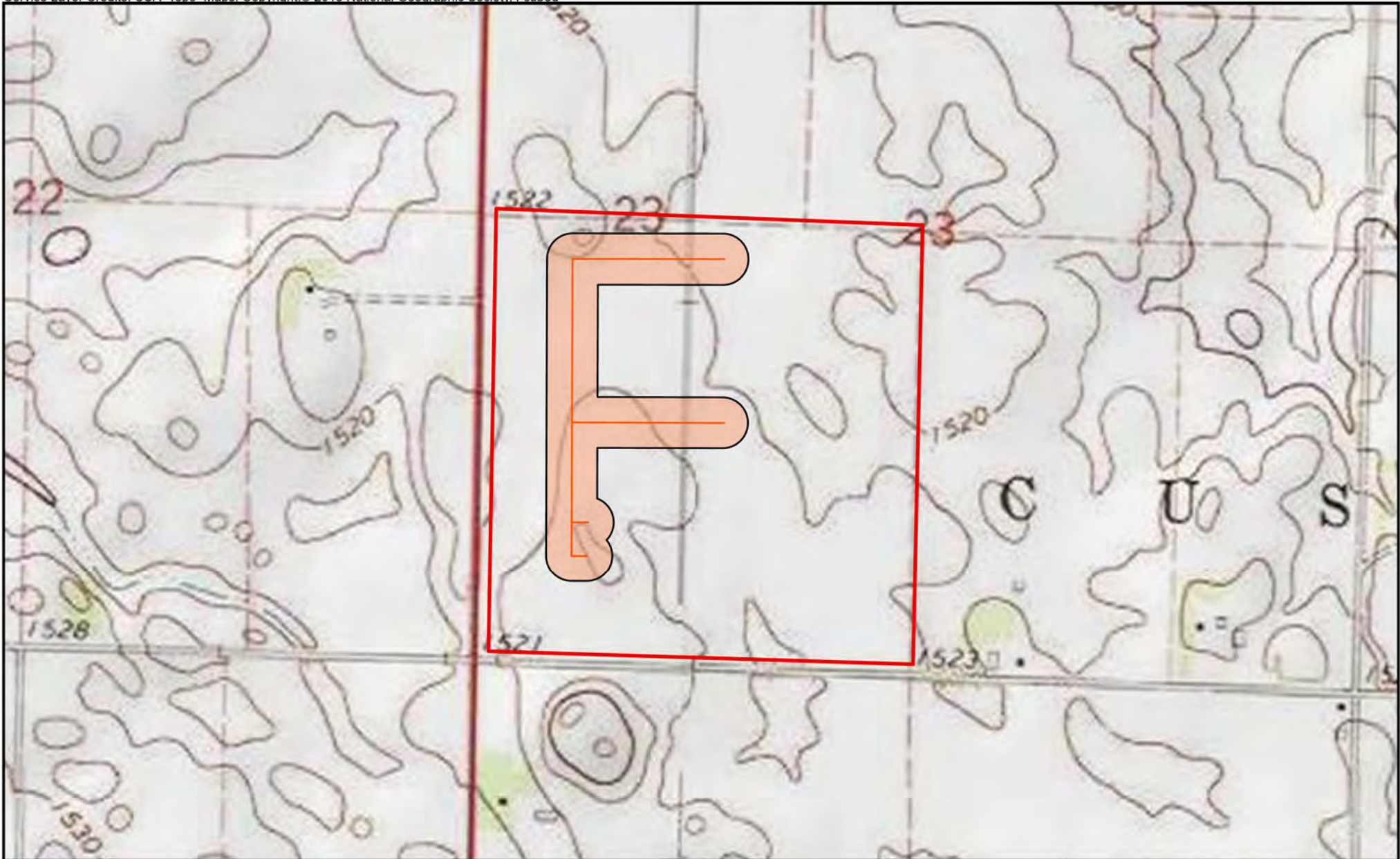





Figure 7-11
Delineated Wetlands
Lyon County Generating Station



-  Project Boundary
-  Transmission Line 150 foot Right-of-Way
-  345 kV Transmission Line - Double Circuit

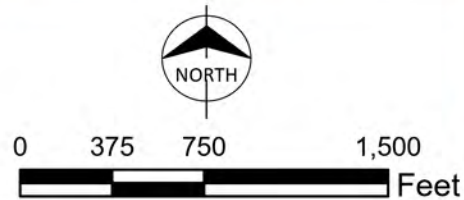


Figure 7-12
Transmission Lines and
USGS Topography
Lyon County Generating Station