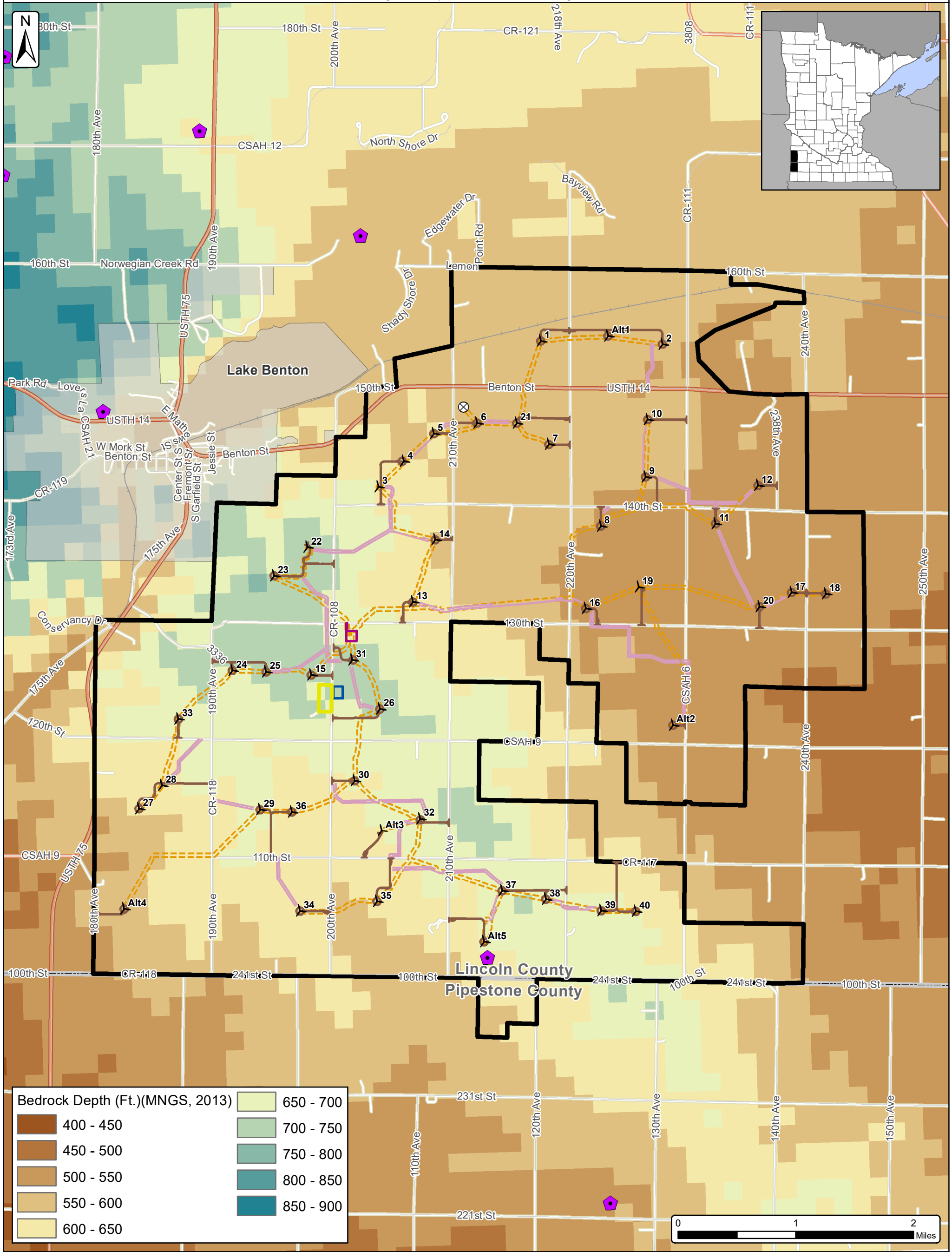


Buffalo Ridge Wind

Figure 12 - Site Geology and Depth to Bedrock Map

Lincoln County & Pipestone County, Minnesota



Bedrock Depth (Ft.)(MNGS, 2013)	
400 - 450	650 - 700
450 - 500	700 - 750
500 - 550	750 - 800
550 - 600	800 - 850
600 - 650	850 - 900

- Gravel Pits (Aggregate Sources- MNDOT, 2015)
- Turbine Layout (2/11/2020)
- MET Towers
- Access Road (2/13/2020)
- Preliminary Crane Paths
- Collection Corridor (2/13/2020)
- O&M Area (05/16/2019)
- Proposed Substation (03/29/2019)
- Potential Laydown/ Batch Plant (07/25/2019)
- Project Area 5/9/2019 (±17,609 Ac.)
- Cities
- Counties

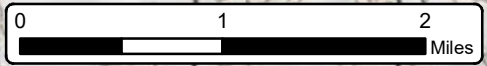
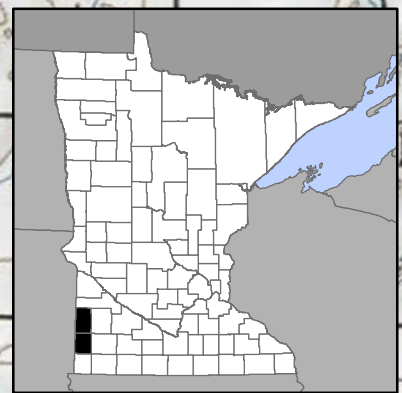
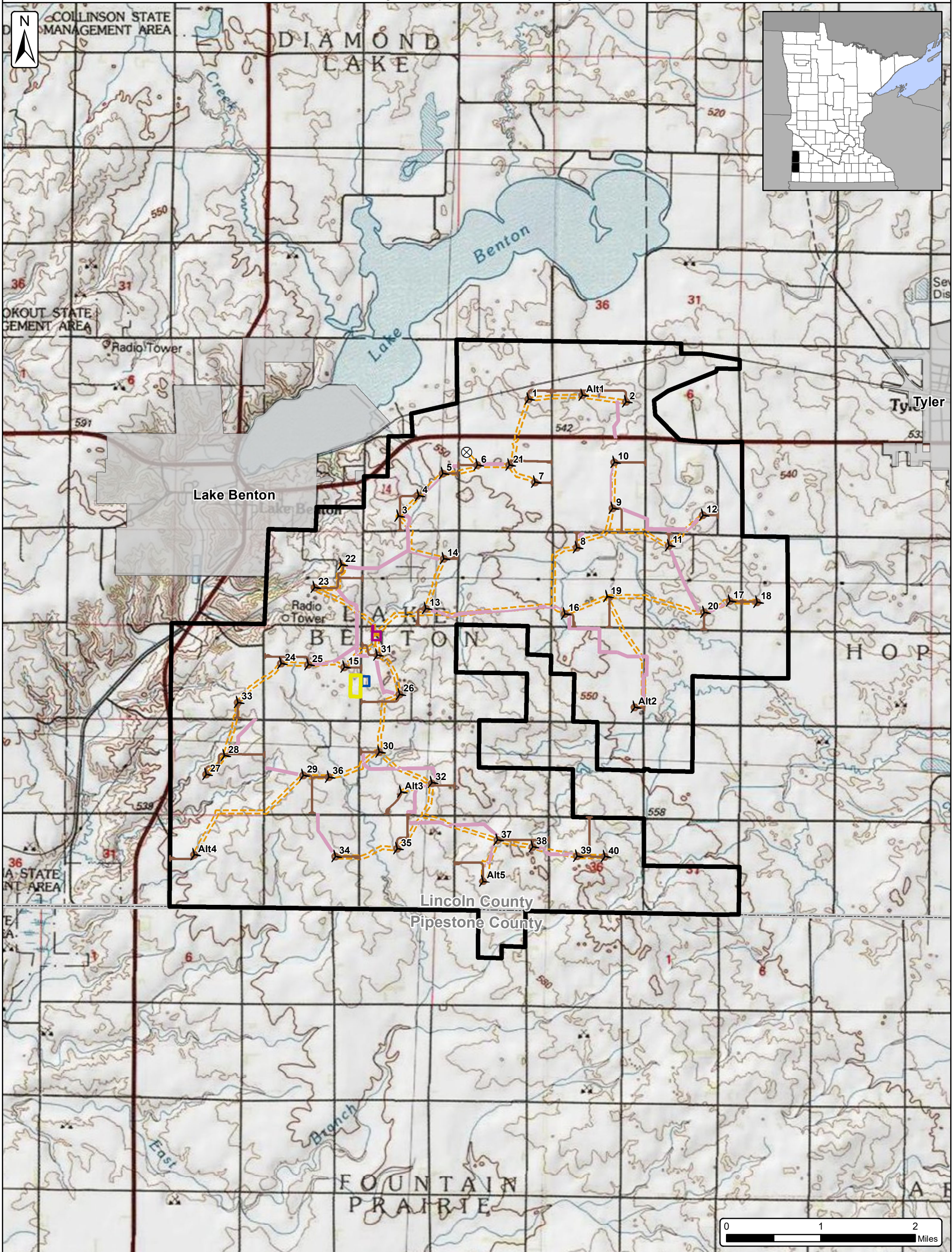













SOURCE: MINNESOTA GEOLOGICAL SURVEY

Buffalo Ridge Wind

Figure 13 - Topographic Map

Lincoln County & Pipestone County, Minnesota



-  Turbine Layout (2/11/2020)
-  MET Tower
-  Access Road (2/13/2020)
-  Preliminary Crane Paths
-  Collection Corridor (2/13/2020)
-  O&M Area (05/16/2019)
-  Proposed Substation (03/29/2019)
-  Potential Laydown/ Batch Plant (07/25/2019)
-  Project Area (5/9/2019 (±17,609 Ac.))
-  Cities
-  Counties

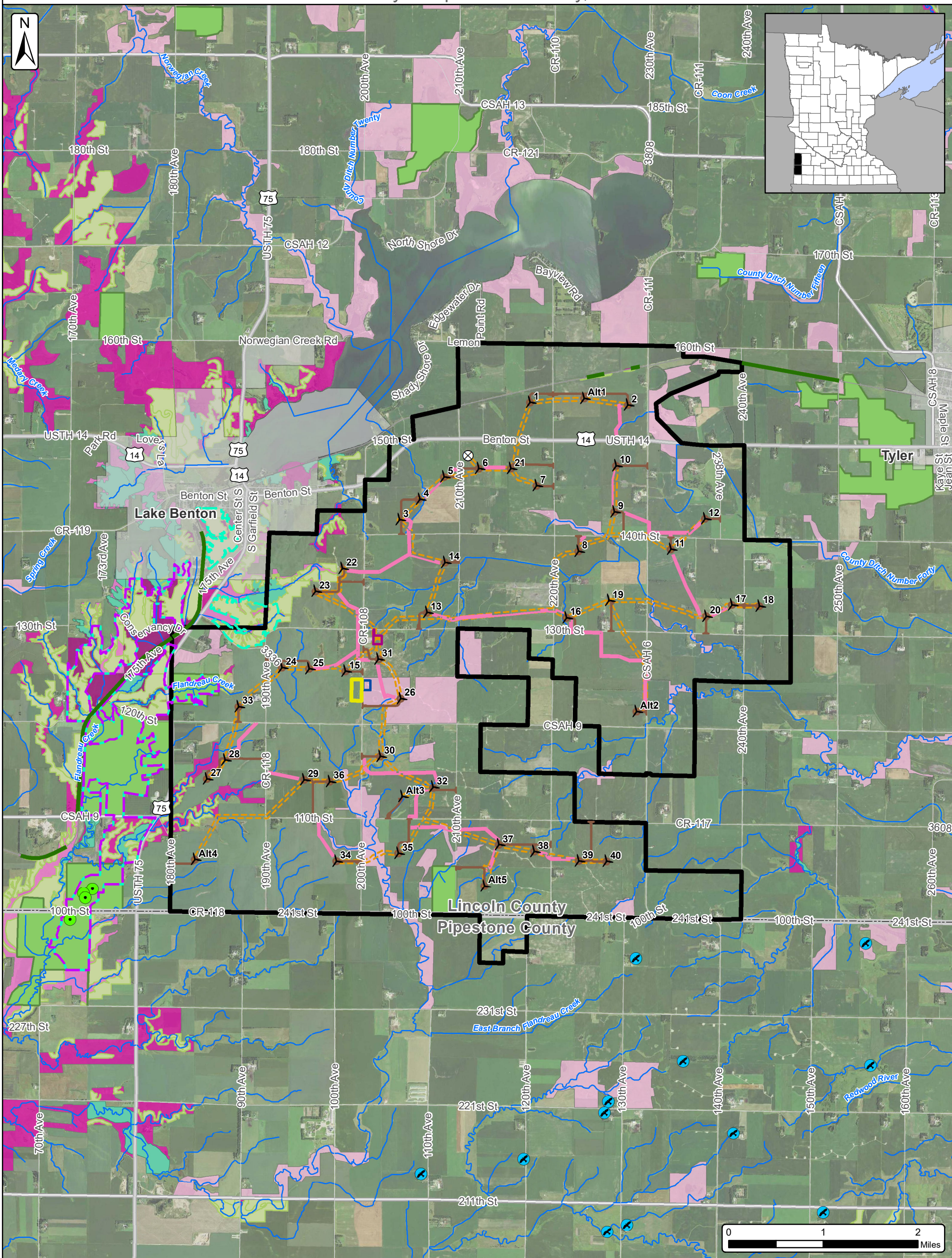


SOURCE: USGS TOPOGRAPHIC QUADRANGLES 1:24,000

Buffalo Ridge Wind

Figure 14 - Unique Natural Features Map

Lincoln County & Pipestone County, Minnesota



<ul style="list-style-type: none"> Raptor Nests (West Inc.) Calcareous Fens (MNDNR) Watercourses (NHD) Sites of Biodiversity Significance (MCBS) <ul style="list-style-type: none"> Below High Moderate Outstanding 	<ul style="list-style-type: none"> Railroad ROW Prairies (MCBS) Native Prairies (MNDNR) Native Plant Communities (MNDNR) Wildlife Management Areas (MNDNR) Critical Habitat (USFWS) Dakota Skipper Poweshiek skipperling Topeka shiner (Covers Entire Map Extent) 	<ul style="list-style-type: none"> Turbine Layout (2/11/2020) MET Tower Access Roads (2/13/2020) Preliminary Crane Paths Collection Corridor (2/13/2020) O&M Area (05/16/2019) Proposed Substation (03/29/2019) Potential Laydown/ Batch Plant (07/25/2019) 	<ul style="list-style-type: none"> Project Area 5/9/2019 (±17,609 Ac.) Cities Counties
--	---	---	--

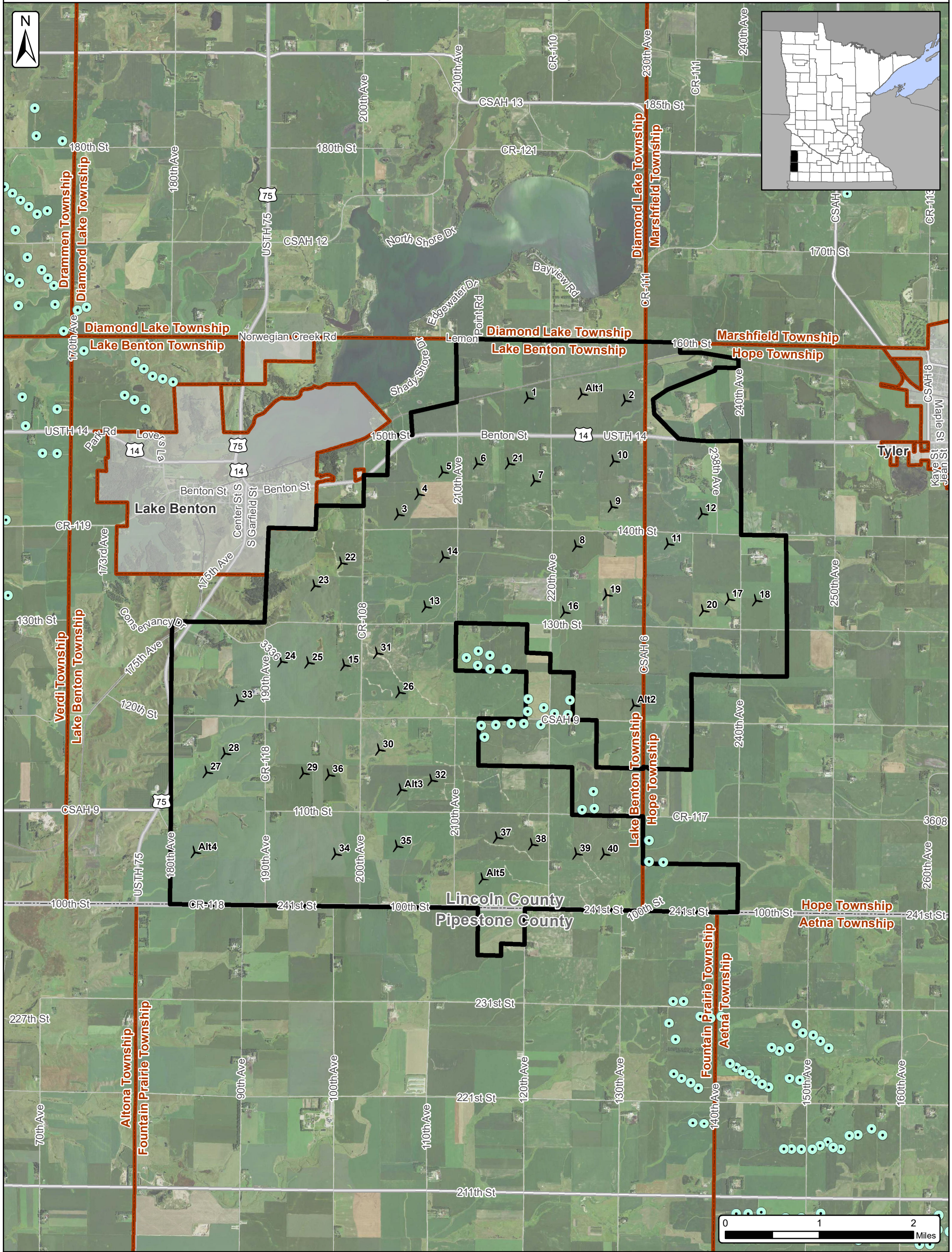
SOURCE: USDA NAIP 2017 IMAGERY



Buffalo Ridge Wind

Figure 15 - Existing Turbine Location Map

Lincoln County & Pipestone County, Minnesota



- Existing Wind Turbine Locations (USGS with Aerial Interpretation)
- Turbine Layout (2/11/2020)
- Project Area 5/9/2019 (±17,609 Ac.)
- Cities
- Townships
- Counties



SOURCE: USDA NAIP 2017 IMAGERY

