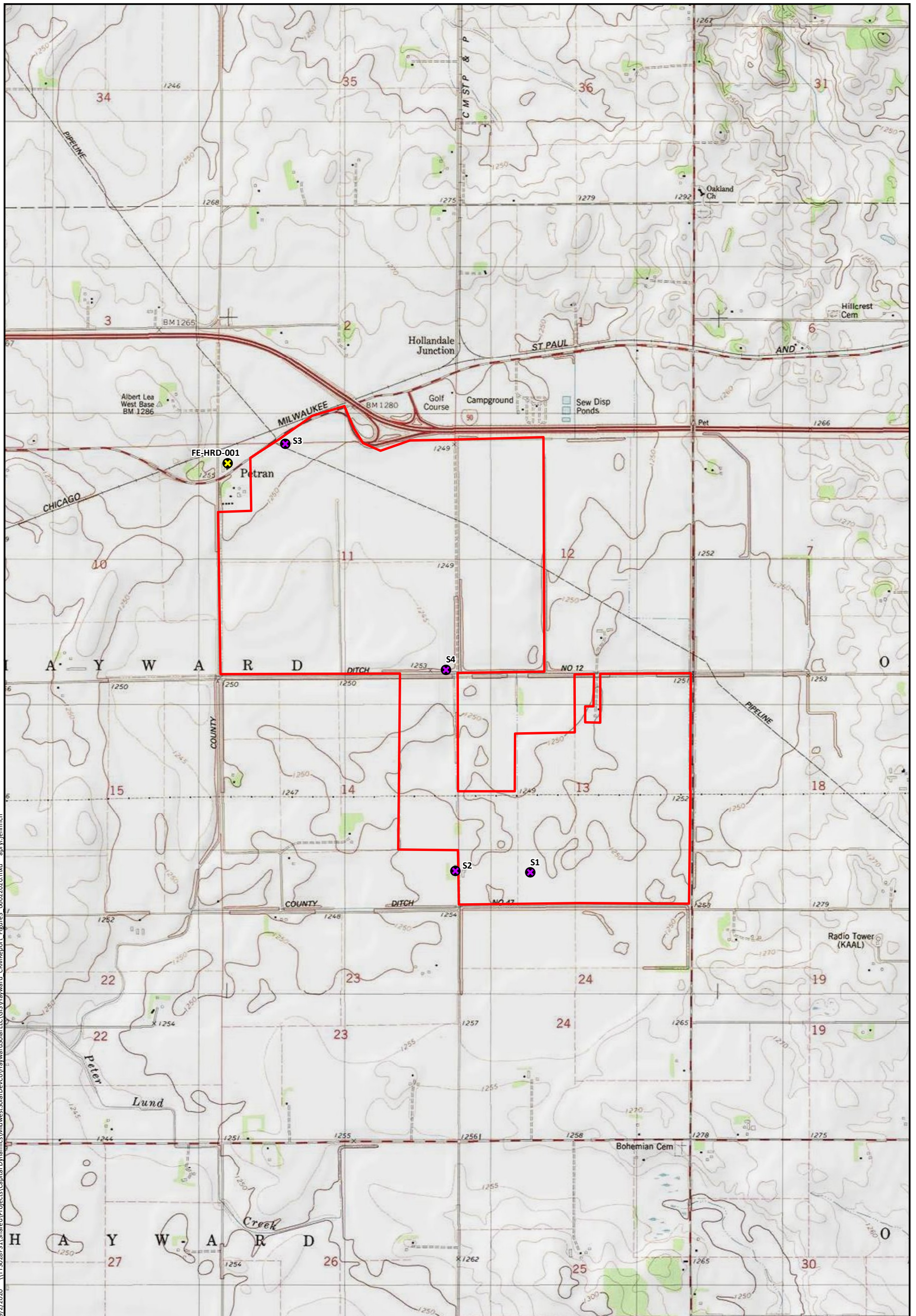


9/2/2020 \\IT5028FS1\Shared\Projects\Capital Dynamics\MidwestSolarDev\CoHaywardSolar\GIS\Hayward_CRMReport_Figure3_06022020.mxd apryl.jennrich



Source: Map adapted from ArcGIS USA Topo Map Server 24K: 1982 Hayward, Minnesota 7.5-minute Topographic Quadrangle; Project Data by Hayward Solar LLC (02/2020); Cultural Data by SHPO and Tetra Tech.



Project Area
✕ Previously Documented Architectural Resource
✕ Historic Structure Location

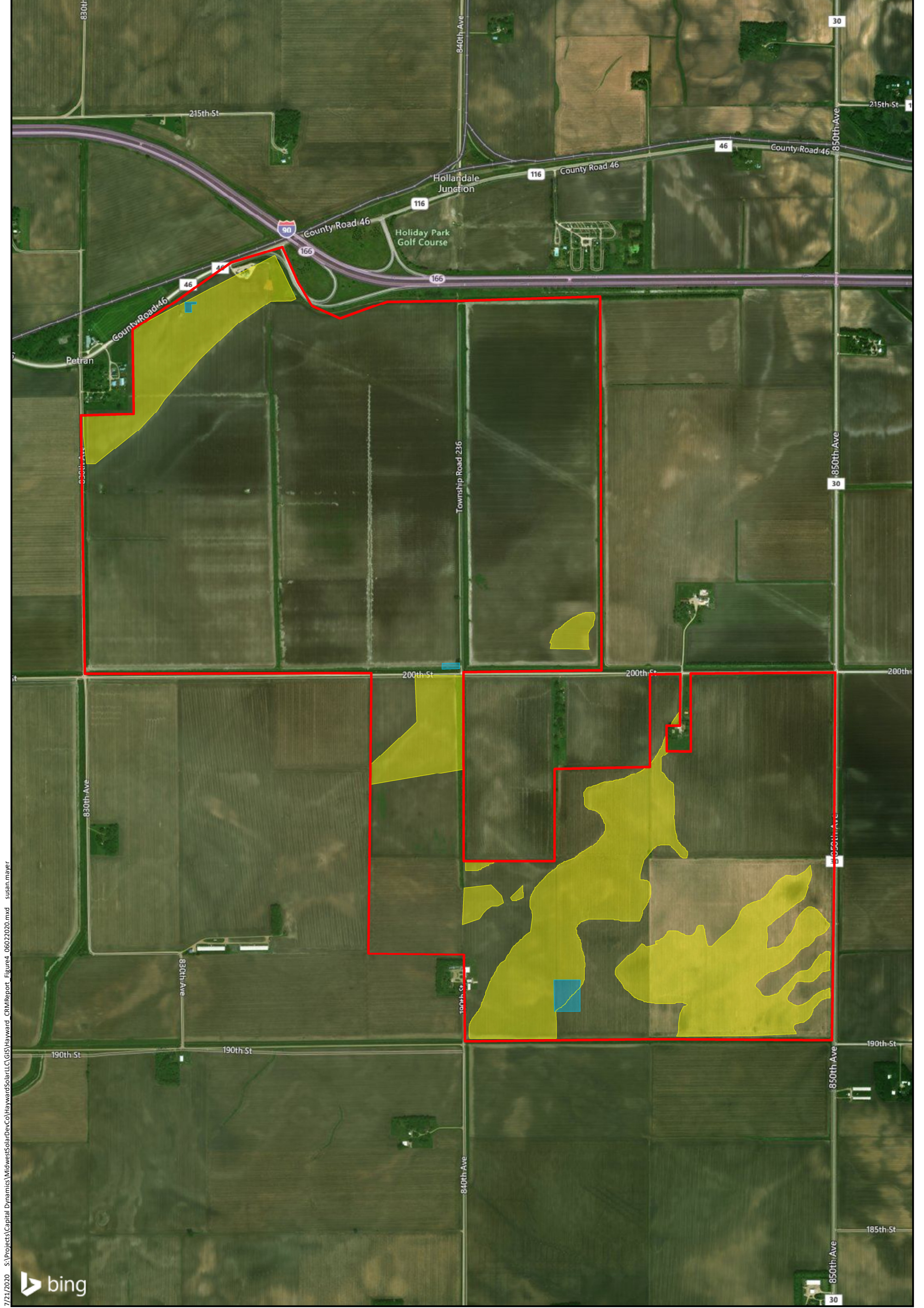
0 0.25 0.5 0.75 1 Miles

1:24,000



**Figure 3: Results of Literature Review
Hayward Solar
Freeborn County, Minnesota**





7/21/2020 S:\Projects\Capital Dynamics\MidwestSolarDevCo\HaywardSolarLLC\GIS\Hayward_CRMReport_Figure4_06022020.mxd susan.mayer

Source: Map adapted from Bing Maps Hybrid; Project Data by Hayward Solar LLC (02/2020); Survey Model by Tetra Tech (04/2020).



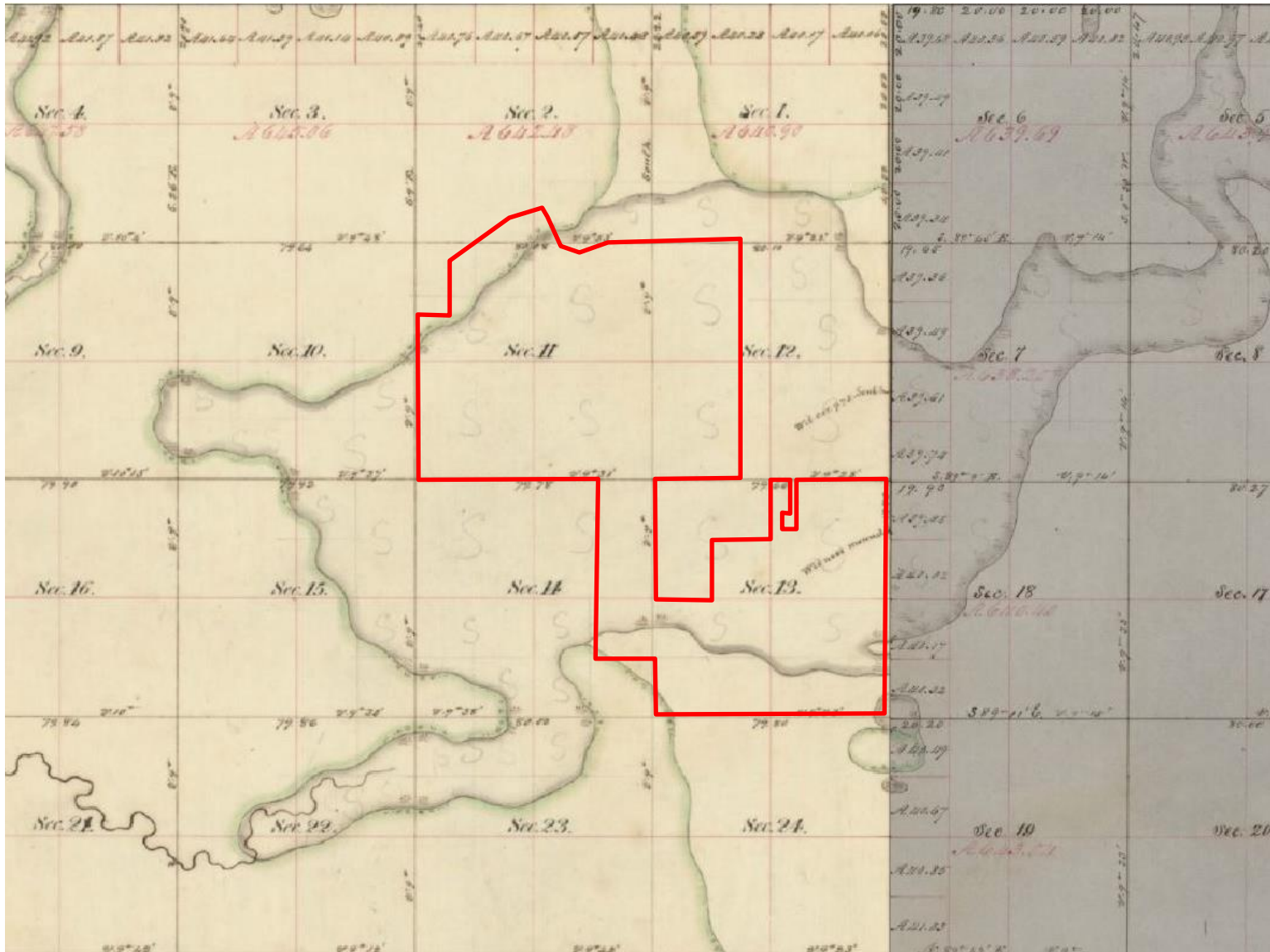
- Project Area
- Survey Model
- Landforms with Increased Potential
- Former Structure Location



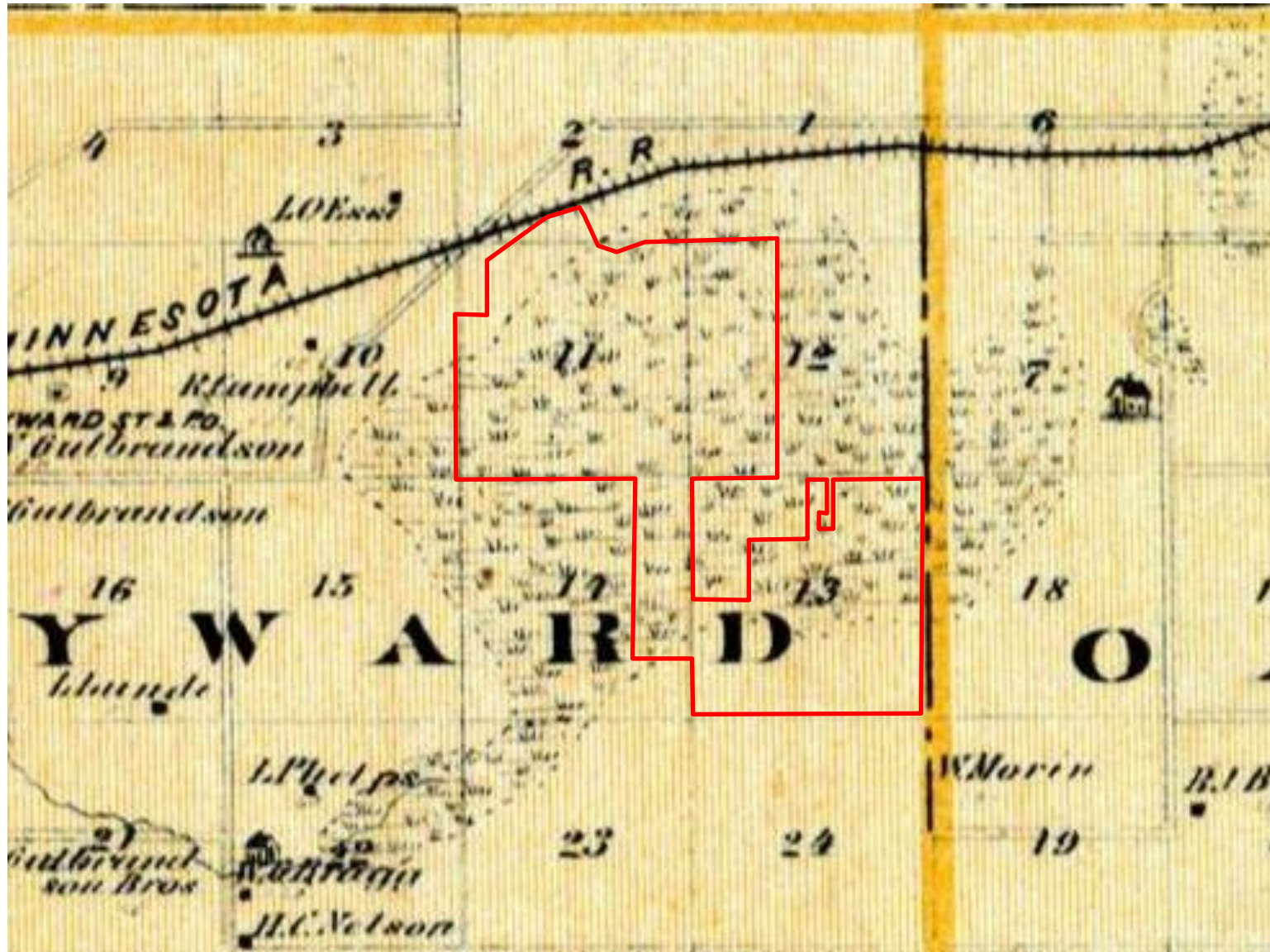
Figure 4: Archaeological Survey Model
Hayward Solar
Freeborn County, Minnesota



APPENDIX B. HISTORICAL MAPS



Map 1: A view of the 1854 General Land Office (GLO) map for Township 102 North, Range 19 West and the 1855 GLO map for Township 102, Range 20. The red outline indicates the approximate location of the Project Area.



Map 2: A view of the 1876 A.T. Andreas atlas. The red outline indicates the approximate location of the Project Area.