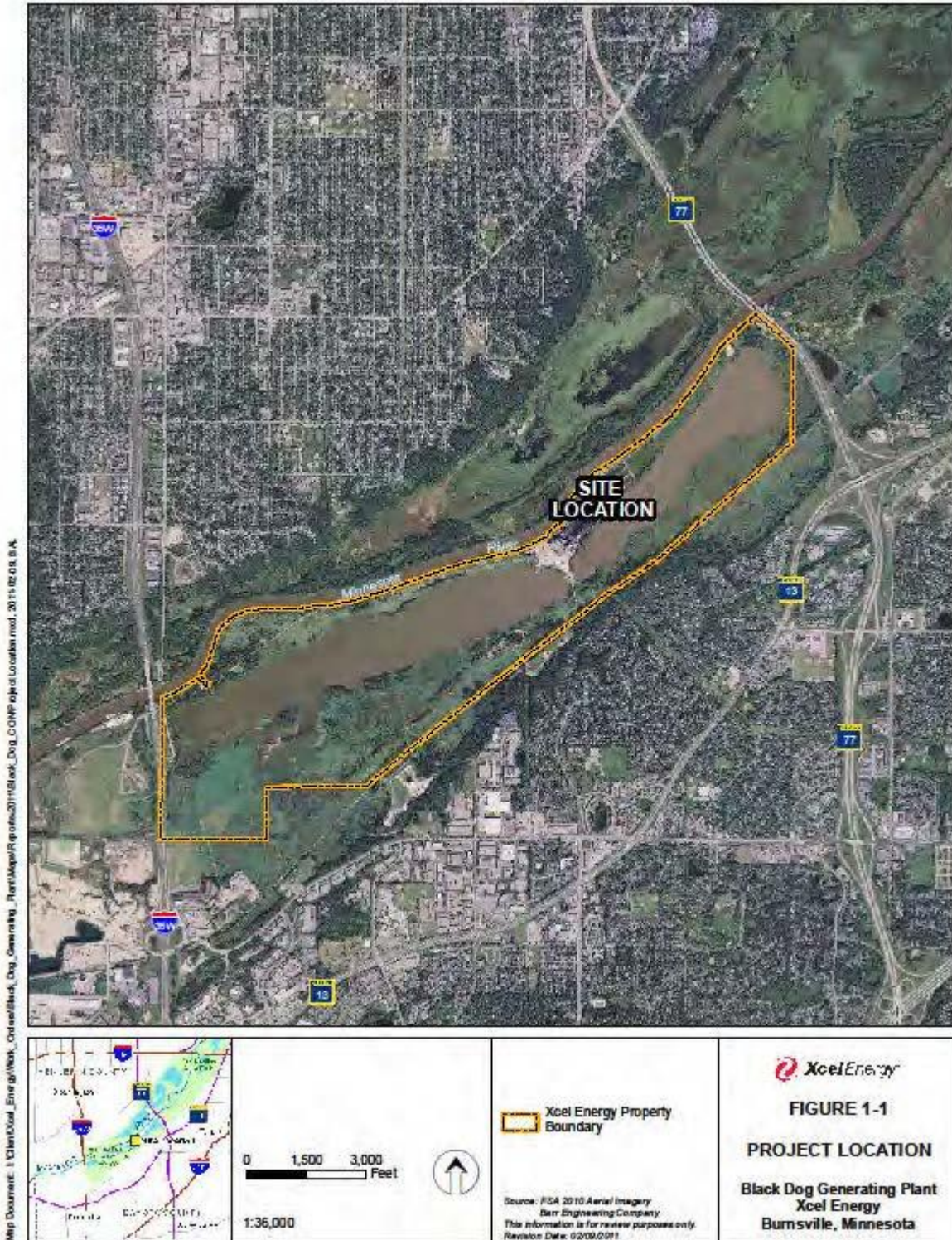


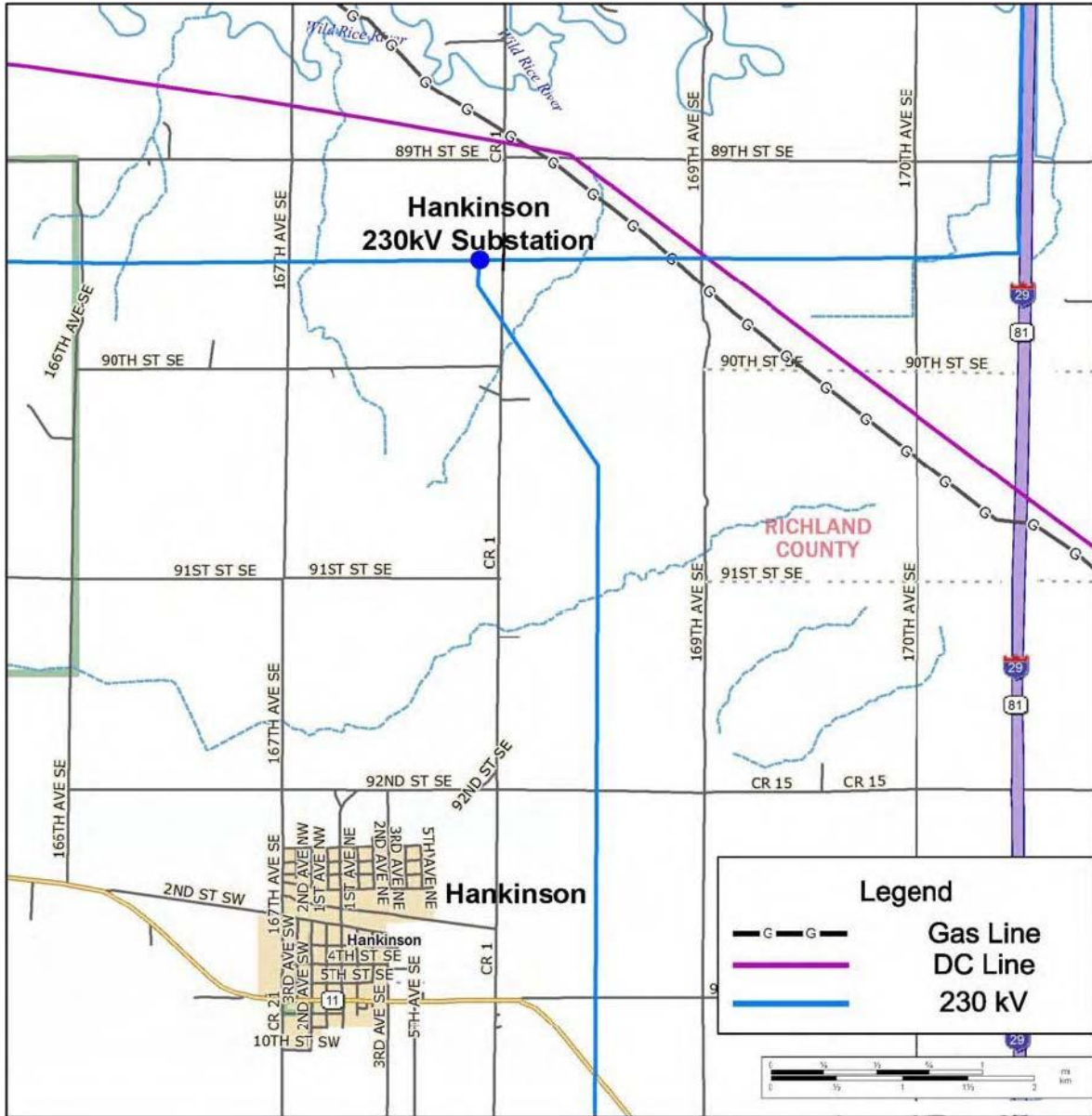
**Appendix B**  
**Proposal Site Maps**



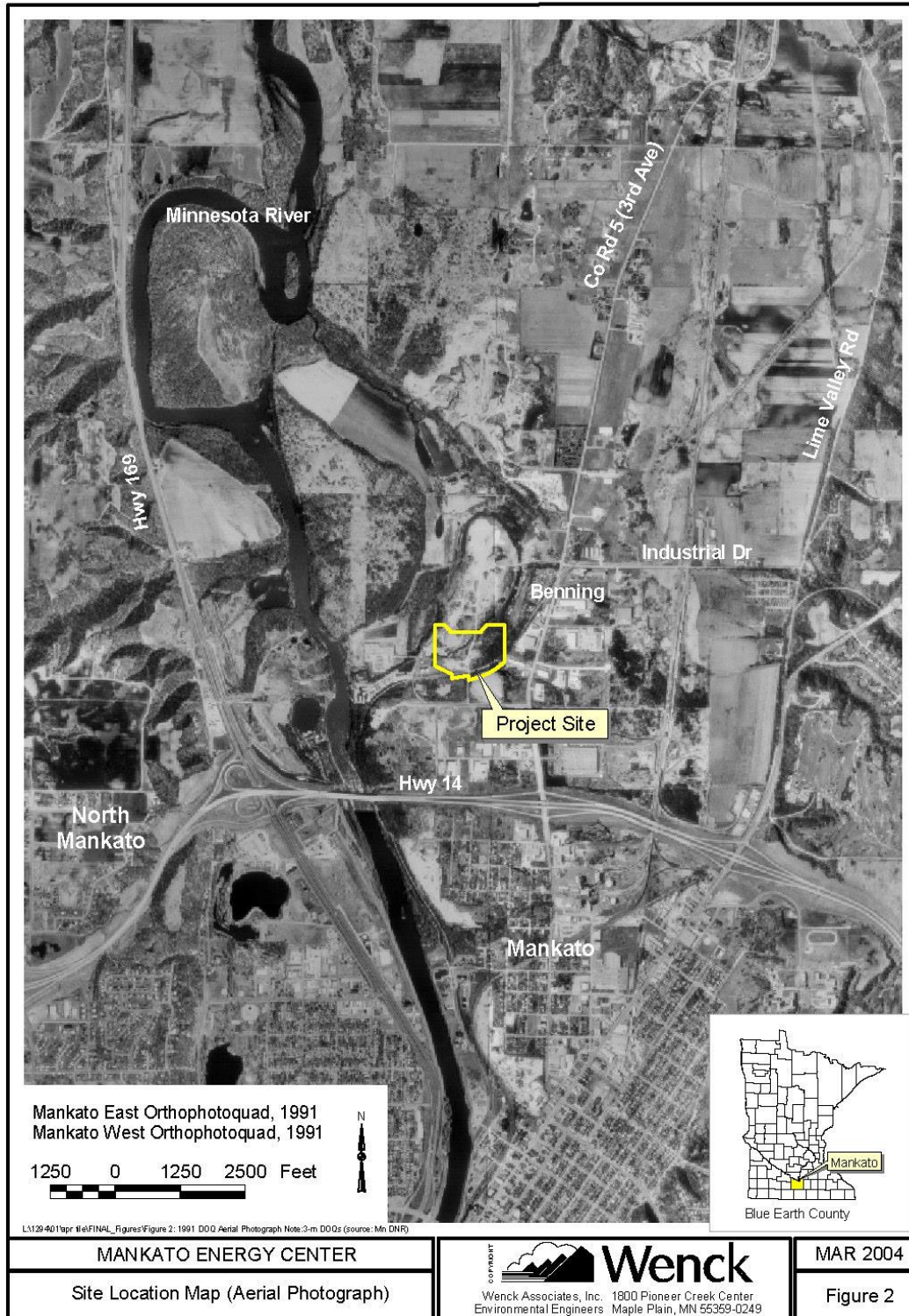
Xcel – Black Dog



Xcel – Red River Valley



Calpine – Mankato Energy Center



# Invenergy - Cannon Falls

Date Saved: Friday, August 09, 2013 2:27:03 PM Prepared By: M.Chang Coordinate System: NAD 1983 UTM Zone 15N Path: \\ARCGIS\DL\MXD\USMNI\_Thermal\cannonfalls2\_sitelayout.mxd



## Cannon Falls Expansion Site Layout

Cannon Falls Expansion, Goodhue County, Minnesota

Rev. 02

August 09, 2013

## Invenergy

One South Wacker Drive Suite 1900  
Chicago, Illinois 60606  
(312) 224-1400

# Invenergy – Hampton Energy Center

Date Saved: Friday, August 09, 2013 2:23:54 PM Prepared By: M.Chang Coordinate System: NAD 1983 UTM Zone 15N Path: \\ARCOIS-DB1.MXD\GIS\USMNI\_Thema\hampton\_site\layout.mxd



## Hampton Site Layout

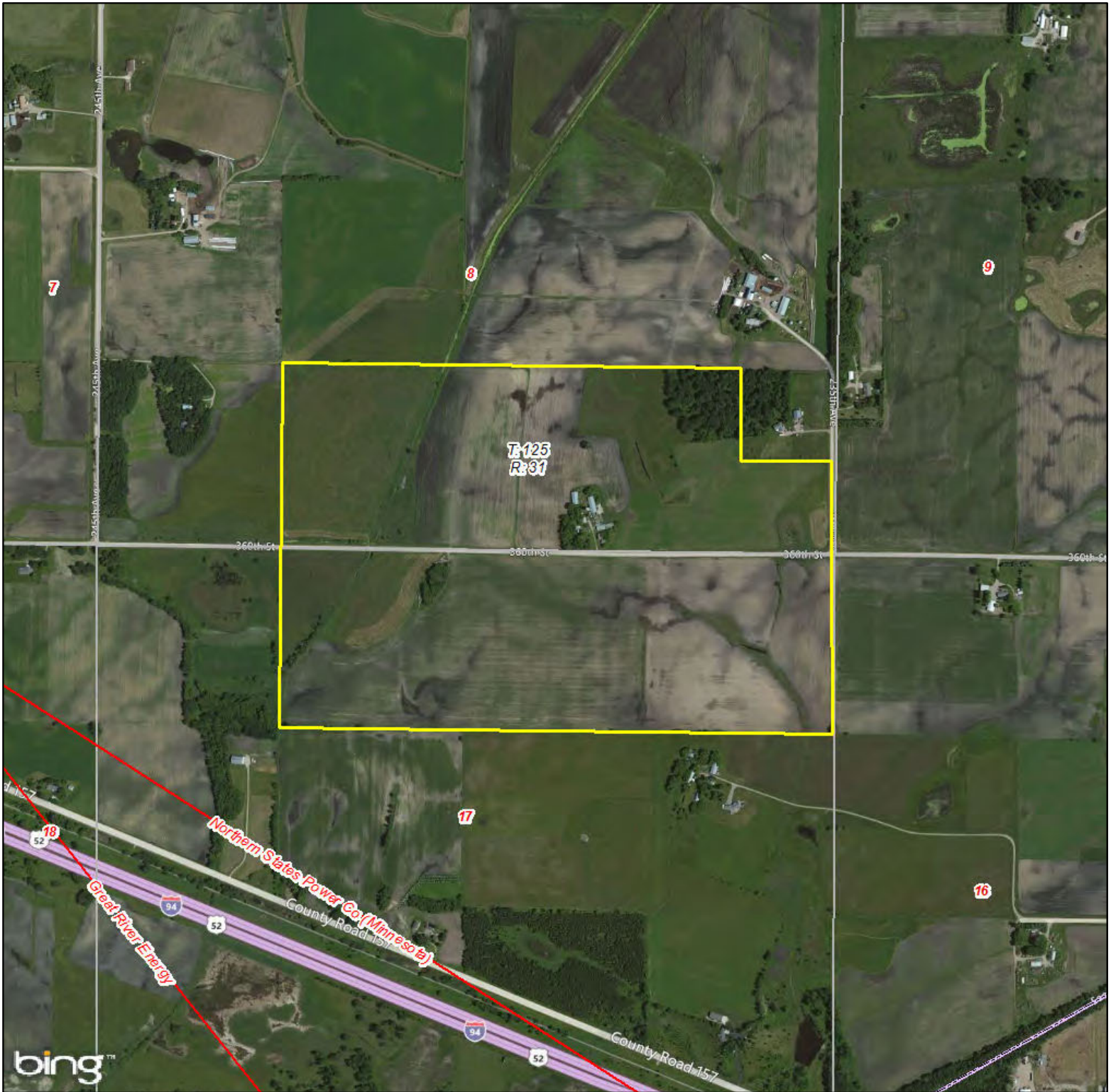
Hampton Energy Center, Dakota County, Minnesota

Rev. 02

August 09, 2013

**Invenergy**

One South Wacker Drive Suite 1900  
Chicago, Illinois 60606  
(312) 224-1400



### LEGEND

- Expected Project Area
- Existing Transmission Lines
  - 69 kV
  - 230 kV
  - 115 kV
  - 345 kV
  - 161 kV
  - 500 kV
- XCEL Service Area (Inset Map)

Data Sources:  
Ventyx, Bing Maps,  
Public Utilities Commission

0 375 750 1,500  
Feet

**Xcel Service Areas**



# Annandale



**LEGEND**

- Expected Project Area
- Existing Transmission Lines
  - 69 kV
  - 230 kV
  - 115 kV
  - 345 kV
  - 161 kV
  - 500 kV
- XCEL Service Area (Inset Map)


Data Sources:  
Ventyx, Bing Maps,  
Public Utilities Commission

0 150 300 600  
Feet

**Xcel Service Areas**



## LEGEND


 Expected Project Area

Existing Transmission Lines

 69 kV  230 kV

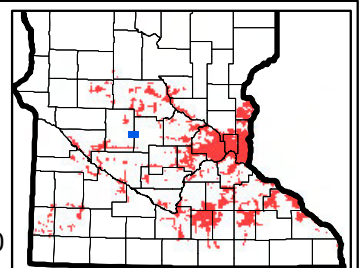
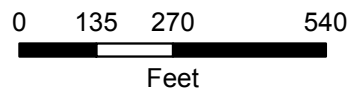
 115 kV  345 kV

 161 kV  500 kV

 XCEL Service Area (Inset Map)

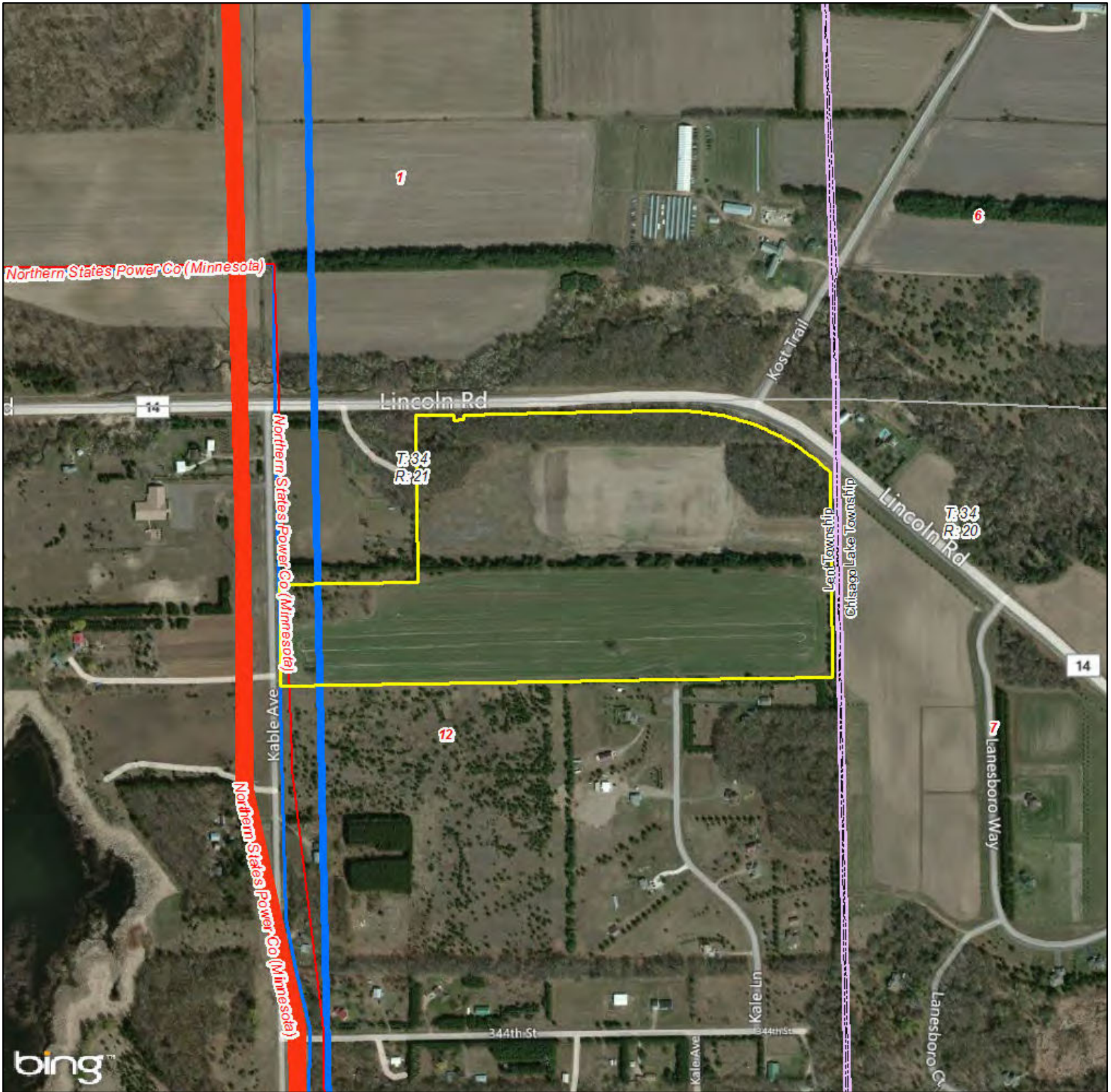


Data Sources:  
Ventyx, Bing Maps,  
Public Utilities Commission



Xcel Service Areas

# Chisago

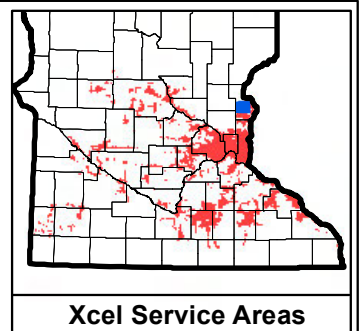
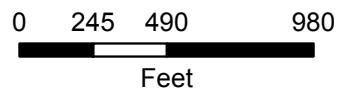


## LEGEND

- Expected Project Area
- Existing Transmission Lines
  - 69 kV
  - 230 kV
  - 115 kV
  - 345 kV
  - 161 kV
  - 500 kV
- XCEL Service Area (Inset Map)



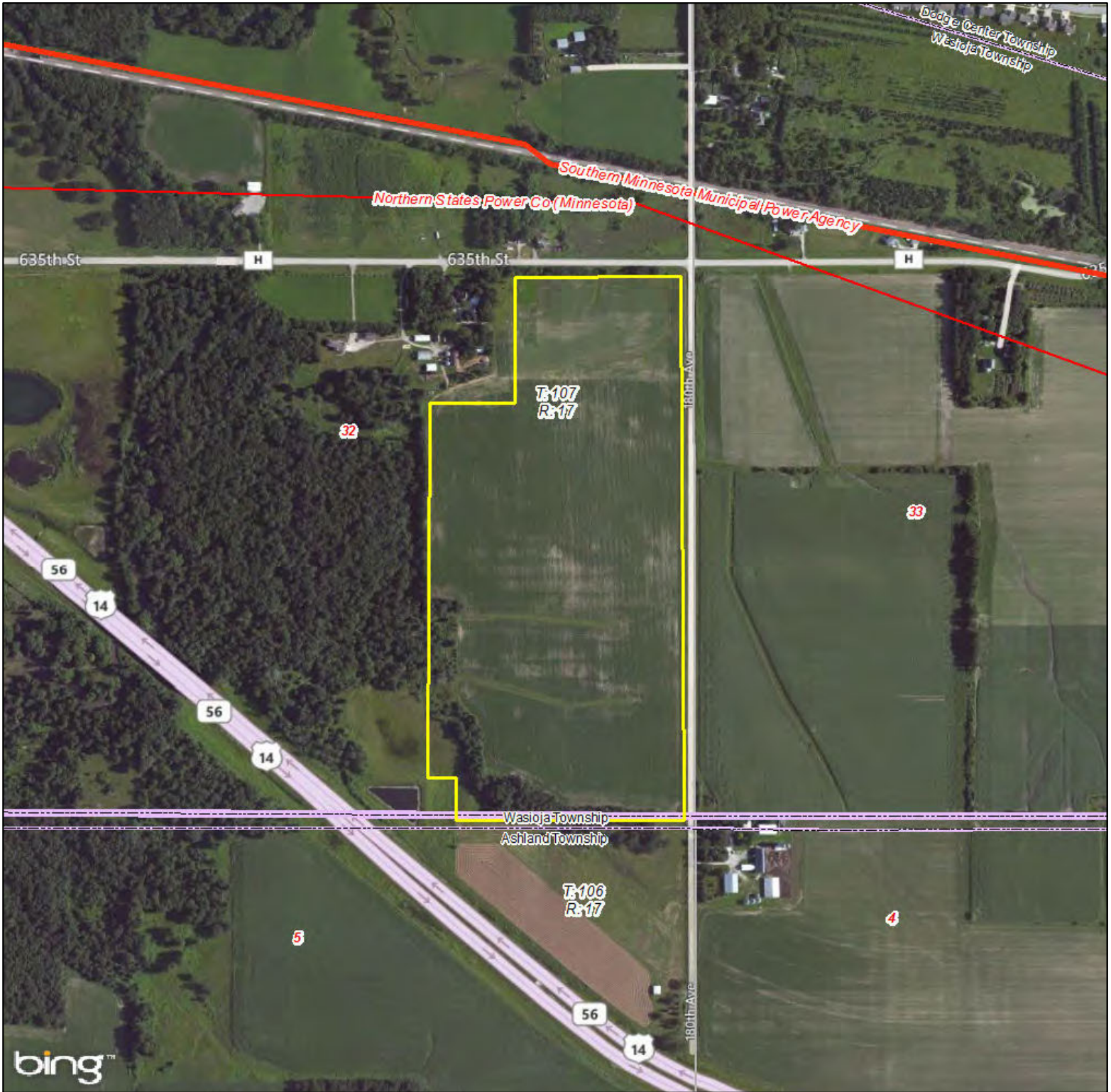
Data Sources:  
Ventyx, Bing Maps,  
Public Utilities Commission



# Dodge Center

Appendix C

6.5MW (AC)  
Dodge County  
65 Acre Project Site

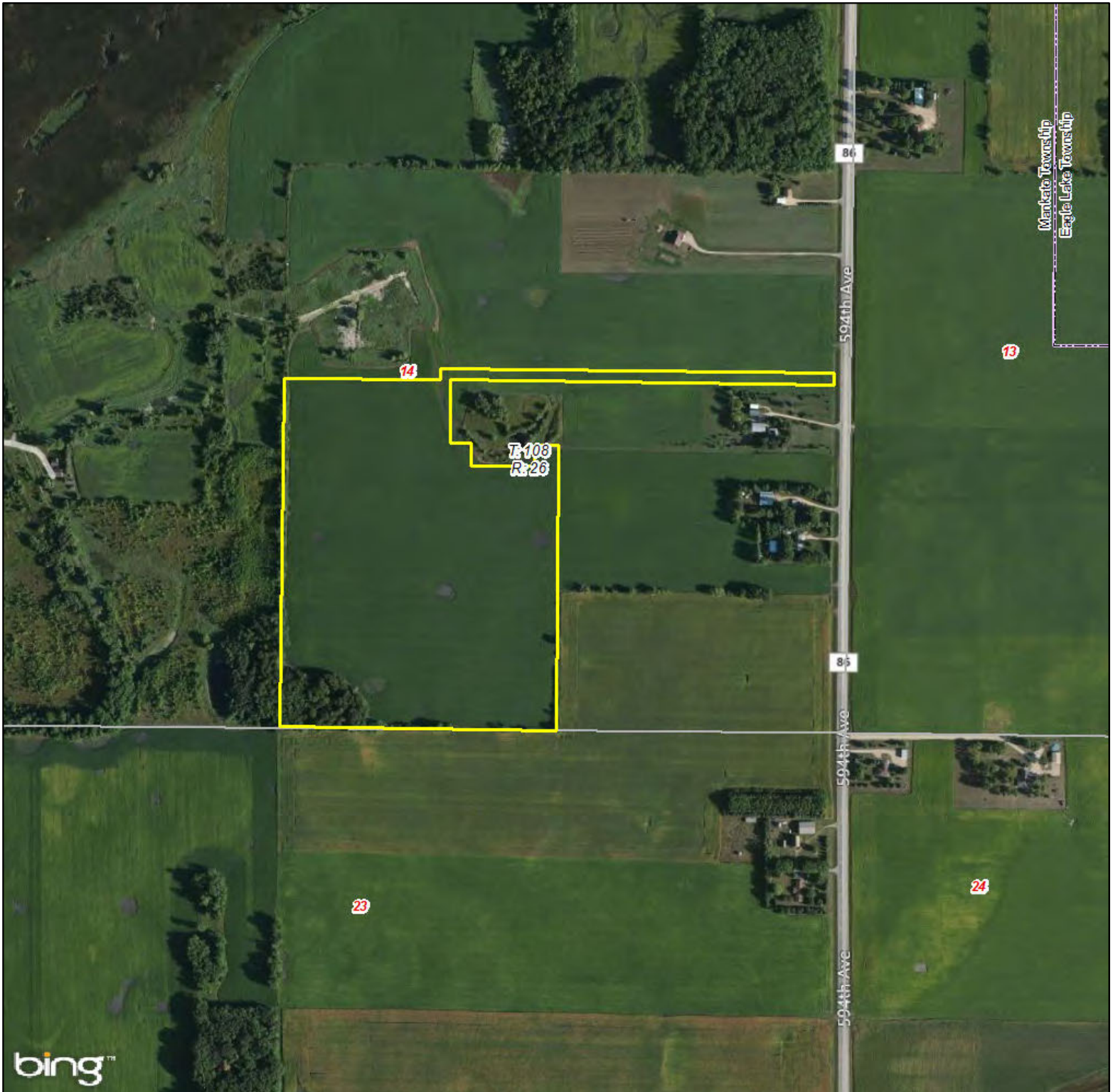


## LEGEND

- Expected Project Area
- Existing Transmission Lines
- 69 kV     230 kV
- 115 kV     345 kV
- 161 kV     500 kV
- XCEL Service Area (Inset Map)

Data Sources:  
Ventyx, Bing Maps,  
Public Utilities Commission

# Eastwood

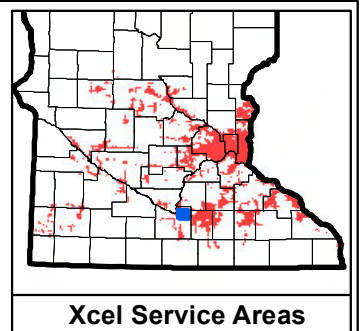
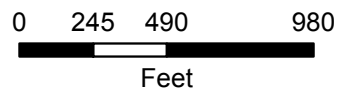


## LEGEND

- Expected Project Area
- Existing Transmission Lines
  - 69 kV
  - 230 kV
  - 115 kV
  - 345 kV
  - 161 kV
  - 500 kV
- XCEL Service Area (Inset Map)











Data Sources:  
Ventyx, Bing Maps,  
Public Utilities Commission



# Fiesta City

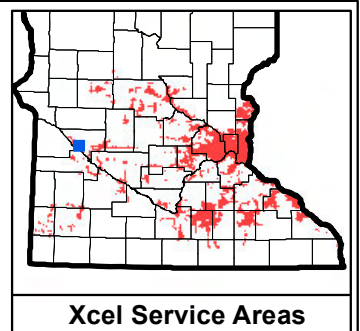
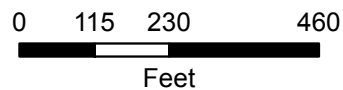


## LEGEND

-  Expected Project Area
- Existing Transmission Lines
  -  69 kV
  -  230 kV
  -  115 kV
  -  345 kV
  -  161 kV
  -  500 kV
-  XCEL Service Area (Inset Map)



Data Sources:  
Ventyx, Bing Maps,  
Public Utilities Commission



Xcel Service Areas

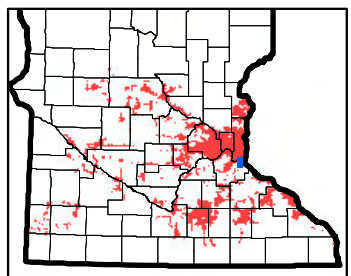
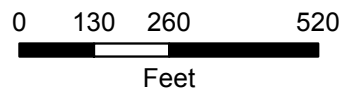


## LEGEND

- Expected Project Area
- Existing Transmission Lines
  - 69 kV
  - 230 kV
  - 115 kV
  - 345 kV
  - 161 kV
  - 500 kV
- XCEL Service Area (Inset Map)

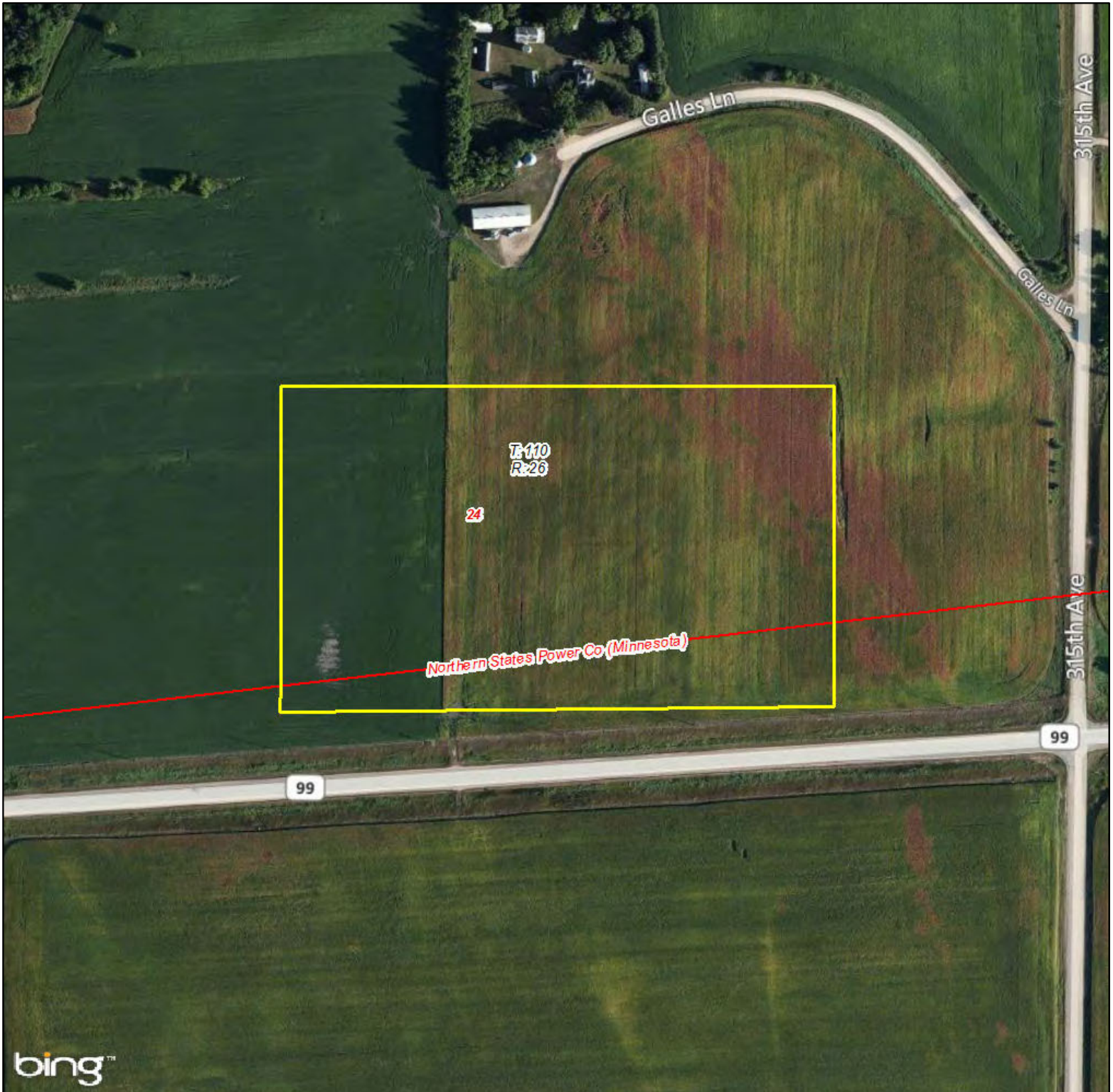


Data Sources:  
Ventyx, Bing Maps,  
Public Utilities Commission



Xcel Service Areas

# Lake Emily

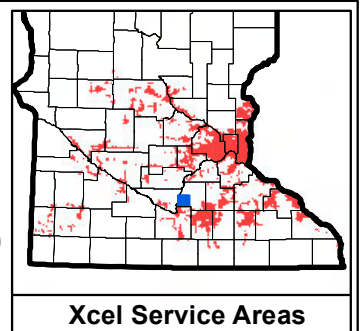
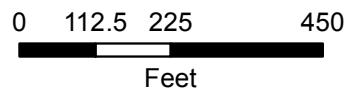


## LEGEND

- Expected Project Area
- Existing Transmission Lines
  - 69 kV
  - 230 kV
  - 115 kV
  - 345 kV
  - 161 kV
  - 500 kV
- XCEL Service Area (Inset Map)

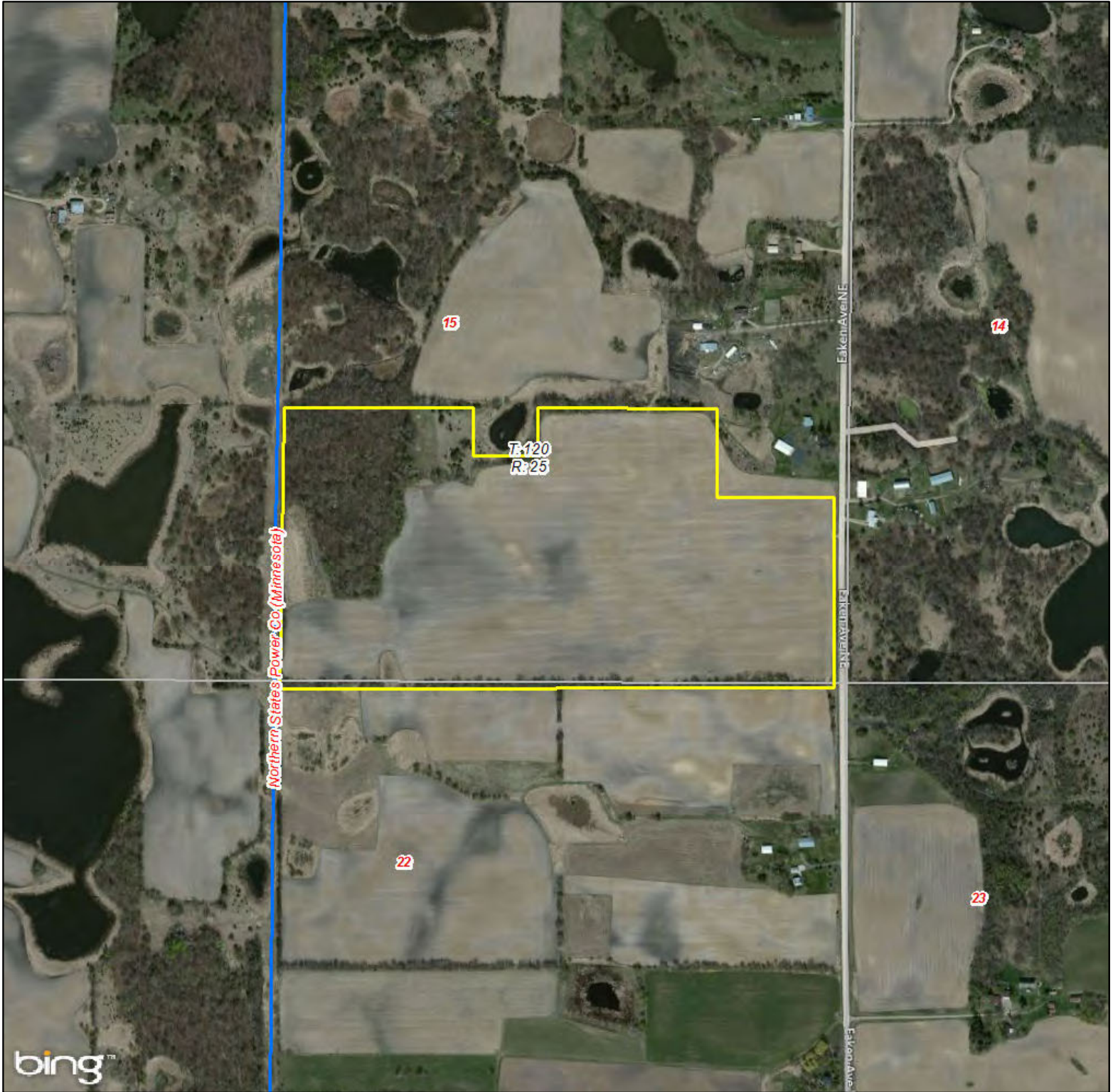


Data Sources:  
Ventyx, Bing Maps,  
Public Utilities Commission













# Lake Pulaski

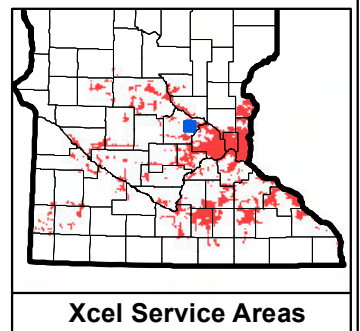
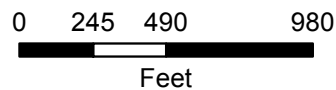


## LEGEND

-  Expected Project Area
- Existing Transmission Lines
  -  69 kV
  -  230 kV
  -  115 kV
  -  345 kV
  -  161 kV
  -  500 kV
-  XCEL Service Area (Inset Map)



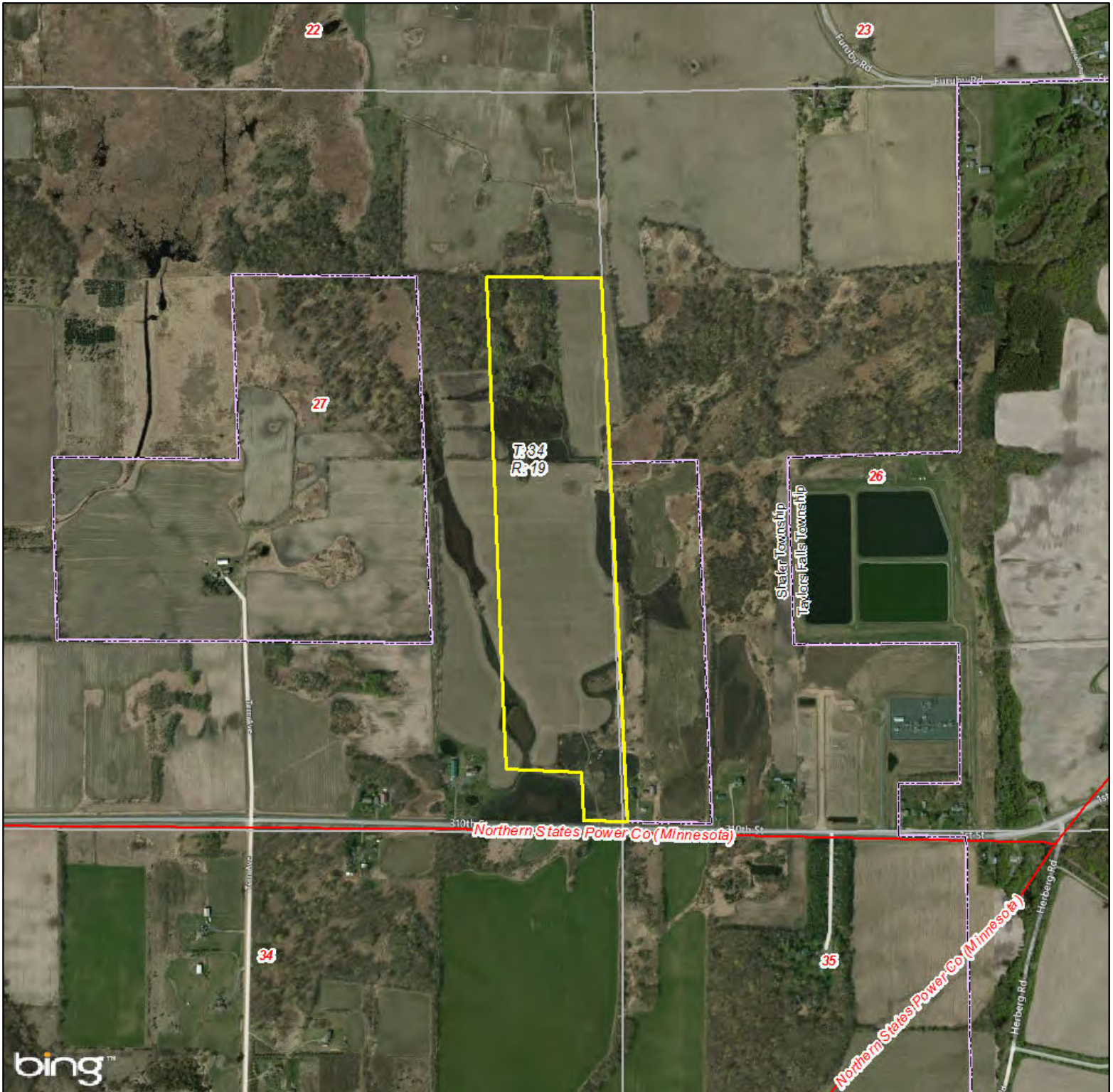
Data Sources:  
Ventyx, Bing Maps,  
Public Utilities Commission




# Lawrence Creek

Appendix C


4MW (AC)  
Chisago County  
70 Acre Project Site



## LEGEND

 Expected Project Area

Existing Transmission Lines

 69 kV  230 kV

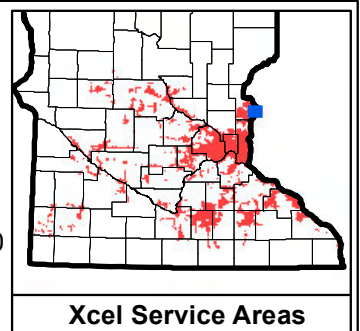
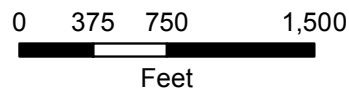
 115 kV  345 kV

 161 kV  500 kV

 XCEL Service Area (Inset Map)



Data Sources:  
Ventyx, Bing Maps,  
Public Utilities Commission



# Lester Prairie

Appendix C

3.5MW (AC)  
McLeod County  
29 Acre Project Site



## LEGEND

Expected Project Area

Existing Transmission Lines

69 kV 230 kV

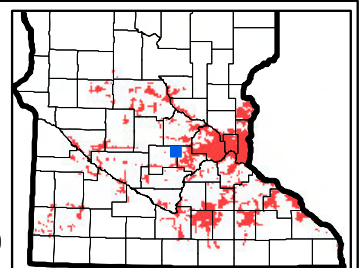
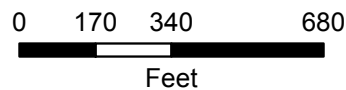
115 kV 345 kV

161 kV 500 kV

XCEL Service Area (Inset Map)



Data Sources:  
Ventyx, Bing Maps,  
Public Utilities Commission



Xcel Service Areas

# Mayhew

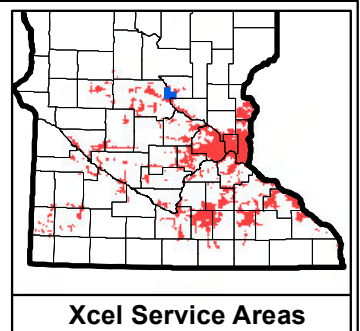
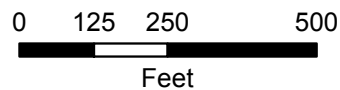


## LEGEND

- Expected Project Area
- Existing Transmission Lines
  - 69 kV
  - 230 kV
  - 115 kV
  - 345 kV
  - 161 kV
  - 500 kV
- XCEL Service Area (Inset Map)



Data Sources:  
Ventyx, Bing Maps,  
Public Utilities Commission



# Montrose

Appendix C

3MW (AC)  
Wright County  
35 Acre Project Site



## LEGEND

Expected Project Area

Existing Transmission Lines

69 kV 230 kV

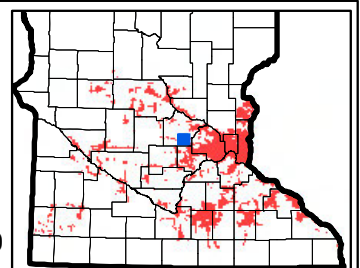
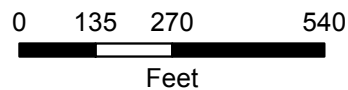
115 kV 345 kV

161 kV 500 kV

XCEL Service Area (Inset Map)



Data Sources:  
Ventyx, Bing Maps,  
Public Utilities Commission

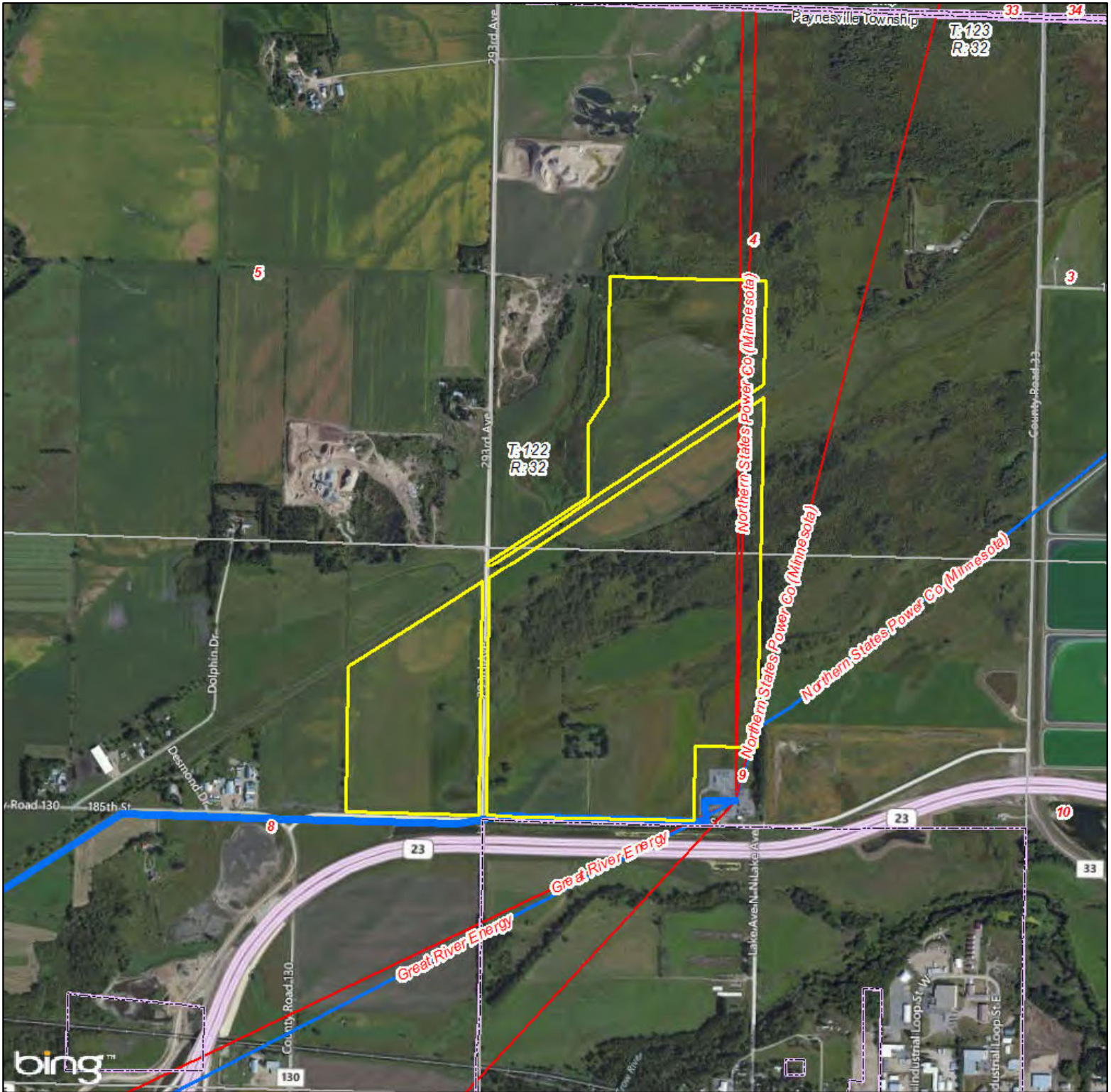


Xcel Service Areas

# Paynesville

Appendix C

10MW (AC)  
Stearns County  
294 Acre Project Site

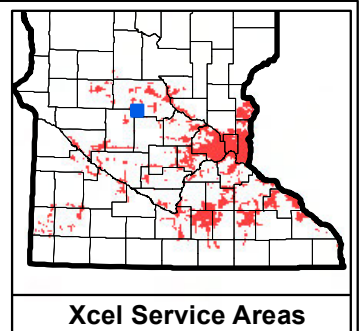
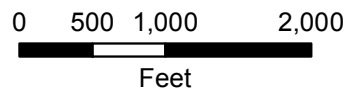


## LEGEND

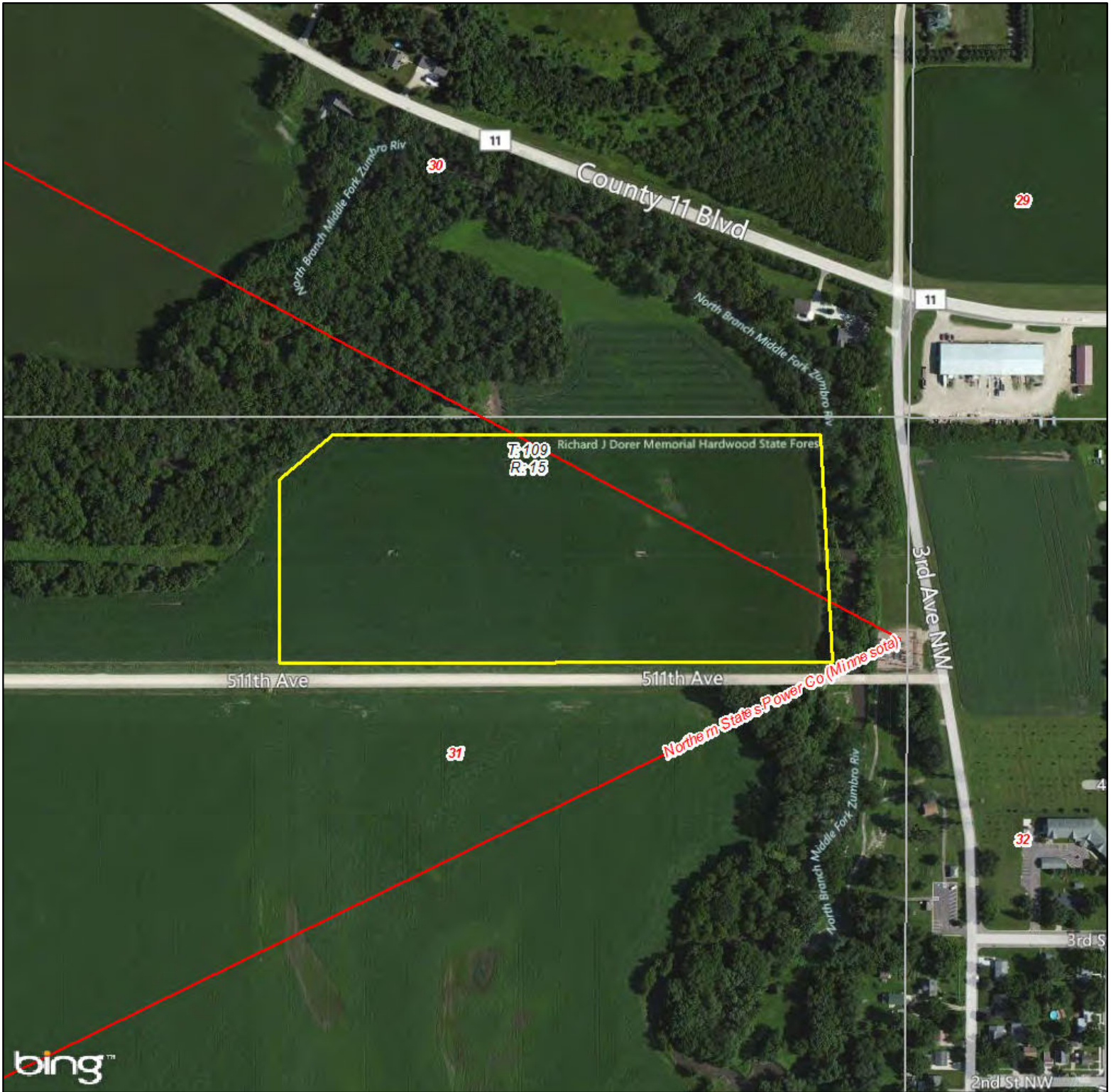
- Expected Project Area
- Existing Transmission Lines
  - 69 kV
  - 230 kV
  - 115 kV
  - 345 kV
  - 161 kV
  - 500 kV
- XCEL Service Area (Inset Map)



Data Sources:  
Ventyx, Bing Maps,  
Public Utilities Commission



# Pine Island



## LEGEND

Expected Project Area

Existing Transmission Lines

69 kV 230 kV

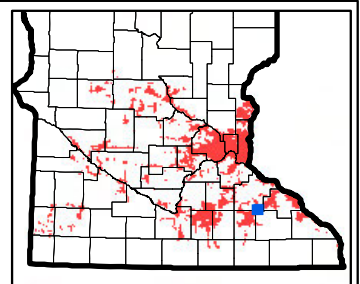
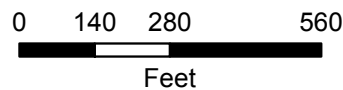
115 kV 345 kV

161 kV 500 kV

XCEL Service Area (Inset Map)

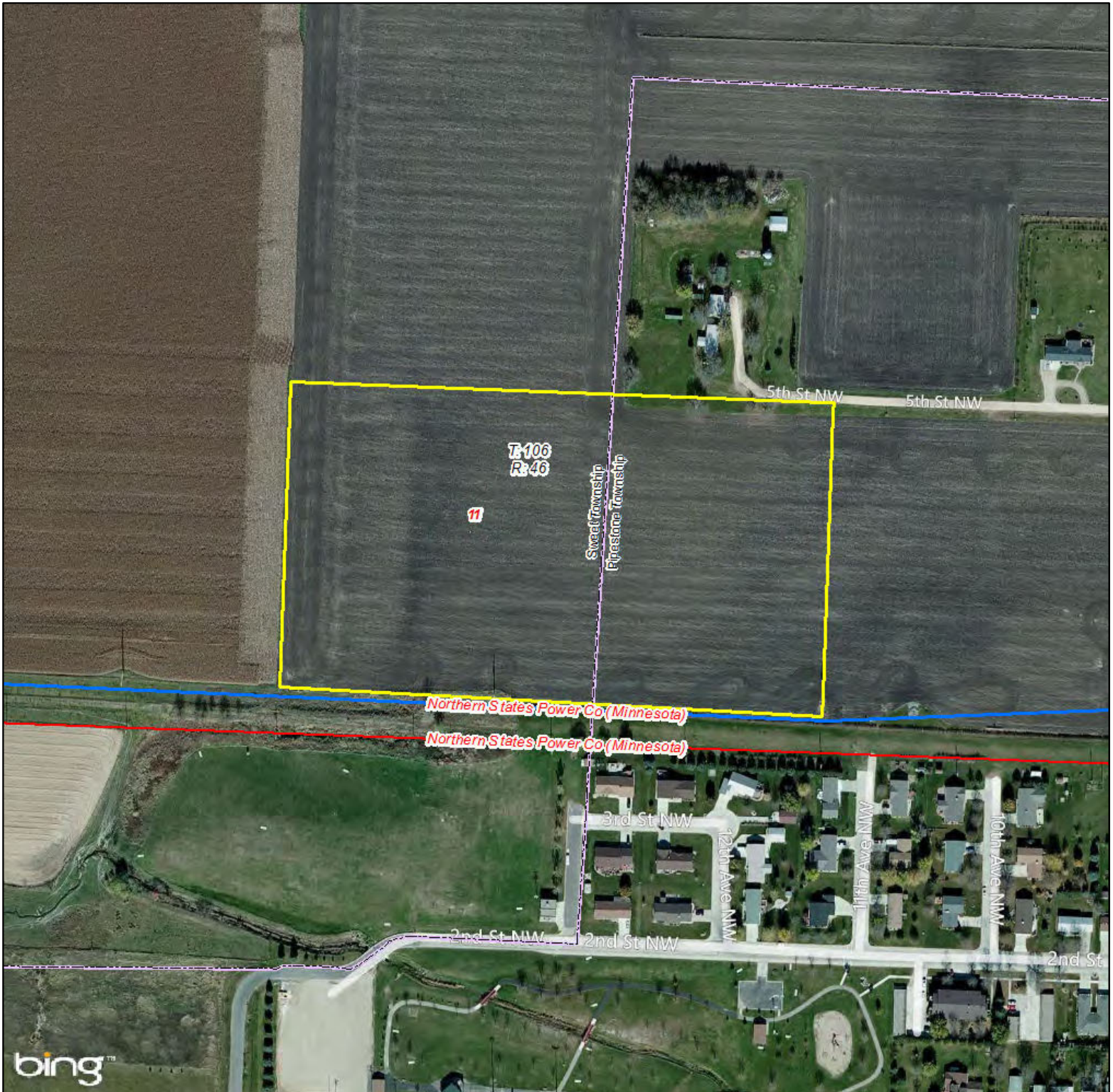


Data Sources:  
Ventyx, Bing Maps,  
Public Utilities Commission



Xcel Service Areas

# Pipestone



## LEGEND

Expected Project Area

Existing Transmission Lines

69 kV 230 kV

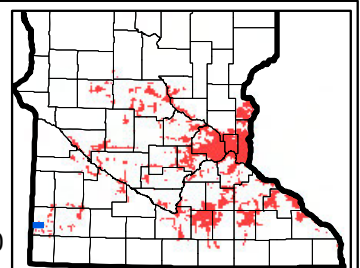
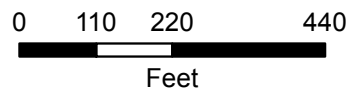
115 kV 345 kV

161 kV 500 kV

XCEL Service Area (Inset Map)



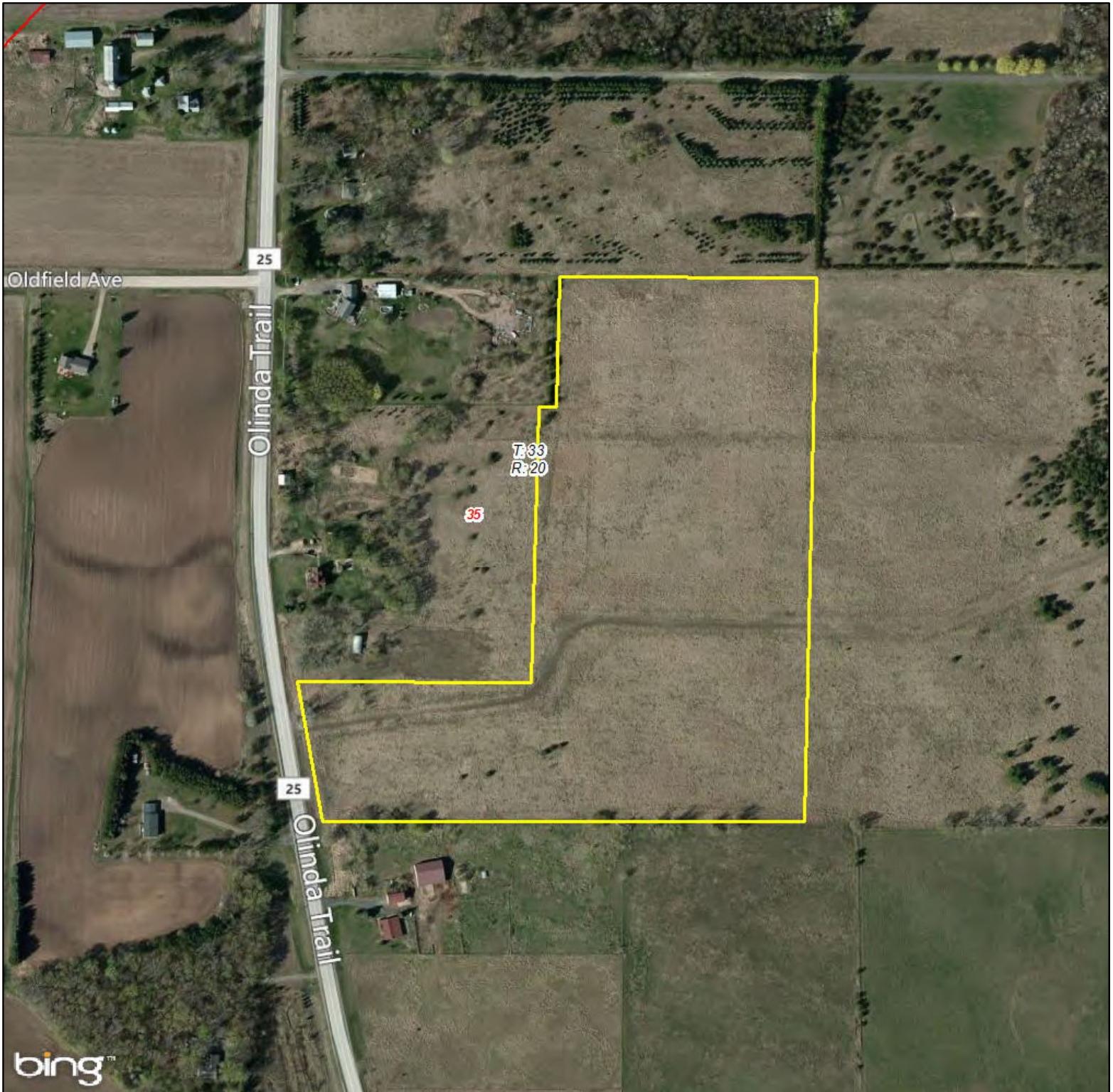
Data Sources:  
Ventyx, Bing Maps,  
Public Utilities Commission



Xcel Service Areas



# Scandia

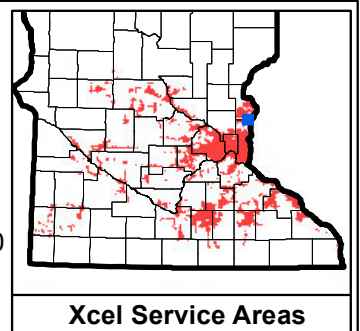
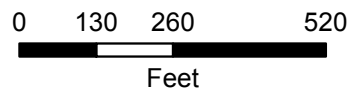


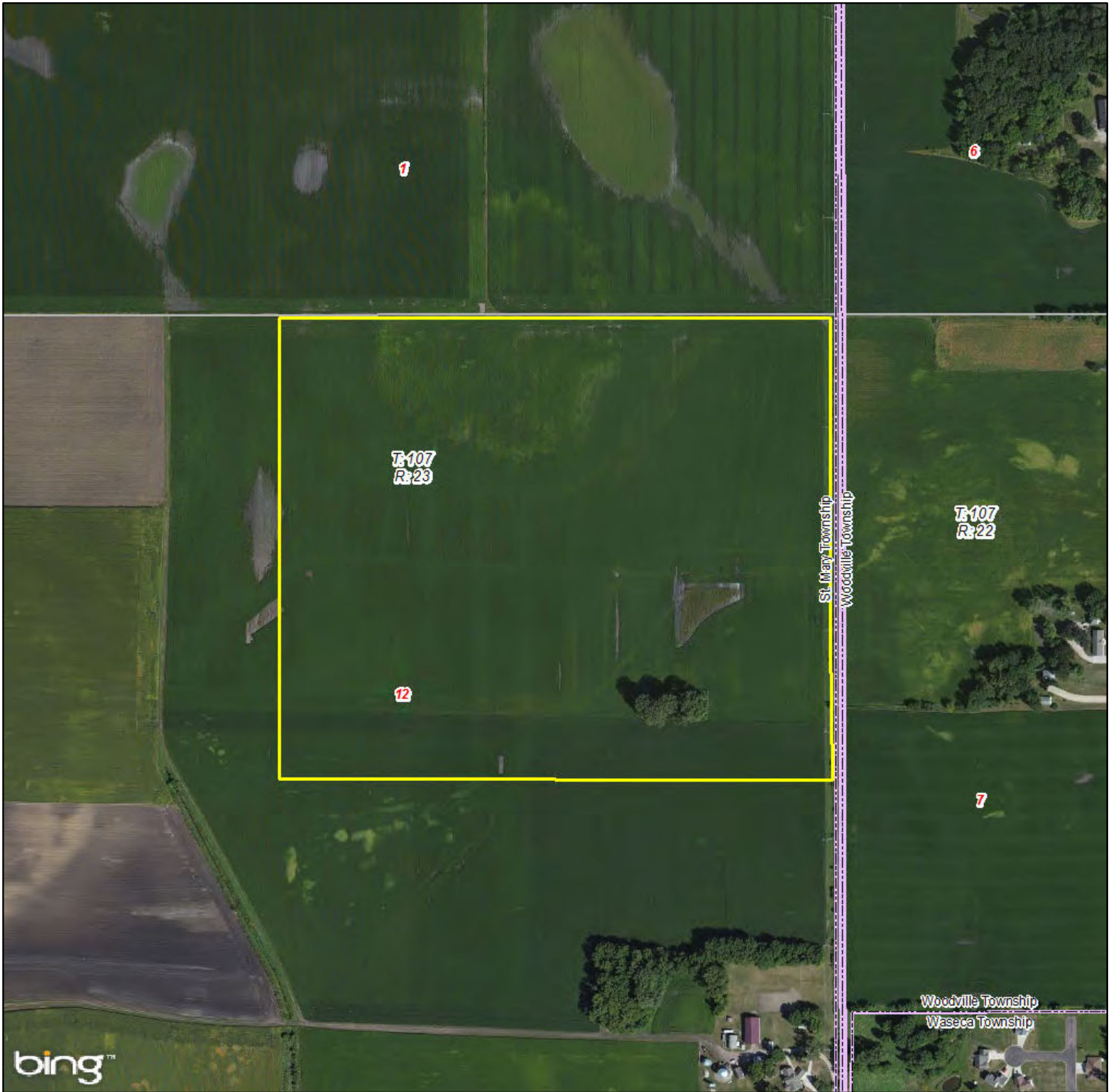
## LEGEND

- Expected Project Area
- Existing Transmission Lines
- 69 kV     230 kV
- 115 kV     345 kV
- 161 kV     500 kV
- XCEL Service Area (Inset Map)



Data Sources:  
Ventyx, Bing Maps,  
Public Utilities Commission



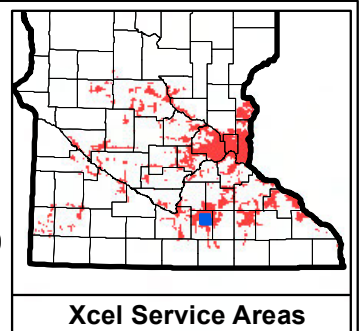
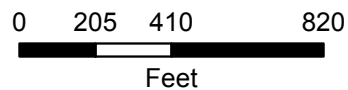


## LEGEND

- Expected Project Area
- Existing Transmission Lines
  - 69 kV
  - 230 kV
  - 115 kV
  - 345 kV
  - 161 kV
  - 500 kV
- XCEL Service Area (Inset Map)



Data Sources:  
Ventyx, Bing Maps,  
Public Utilities Commission











# West Faribault

Appendix C

2.5MW (AC)  
Rice County  
27 Acre Project Site

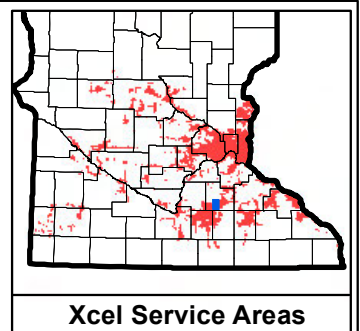
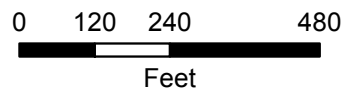


## LEGEND

-  Expected Project Area
- Existing Transmission Lines
  -  69 kV
  -  230 kV
  -  115 kV
  -  345 kV
  -  161 kV
  -  500 kV
-  XCEL Service Area (Inset Map)



Data Sources:  
Ventyx, Bing Maps,  
Public Utilities Commission



# West Waconia

Appendix C

8.5MW (AC)  
Carver County  
75 Acre Project Site

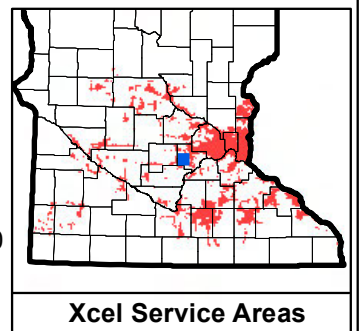
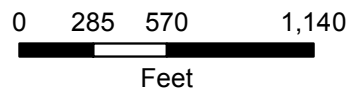


## LEGEND

- Expected Project Area
- Existing Transmission Lines
  - 69 kV
  - 230 kV
  - 115 kV
  - 345 kV
  - 161 kV
  - 500 kV
- XCEL Service Area (Inset Map)




Data Sources:  
Ventyx, Bing Maps,  
Public Utilities Commission







## LEGEND


 Expected Project Area

Existing Transmission Lines

 69 kV  230 kV

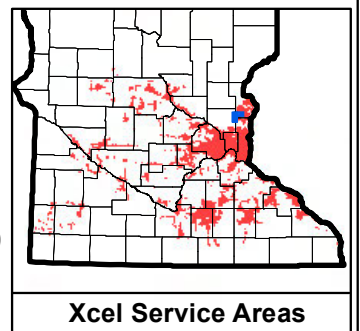
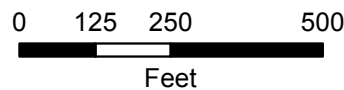
 115 kV  345 kV

 161 kV  500 kV

 XCEL Service Area (Inset Map)

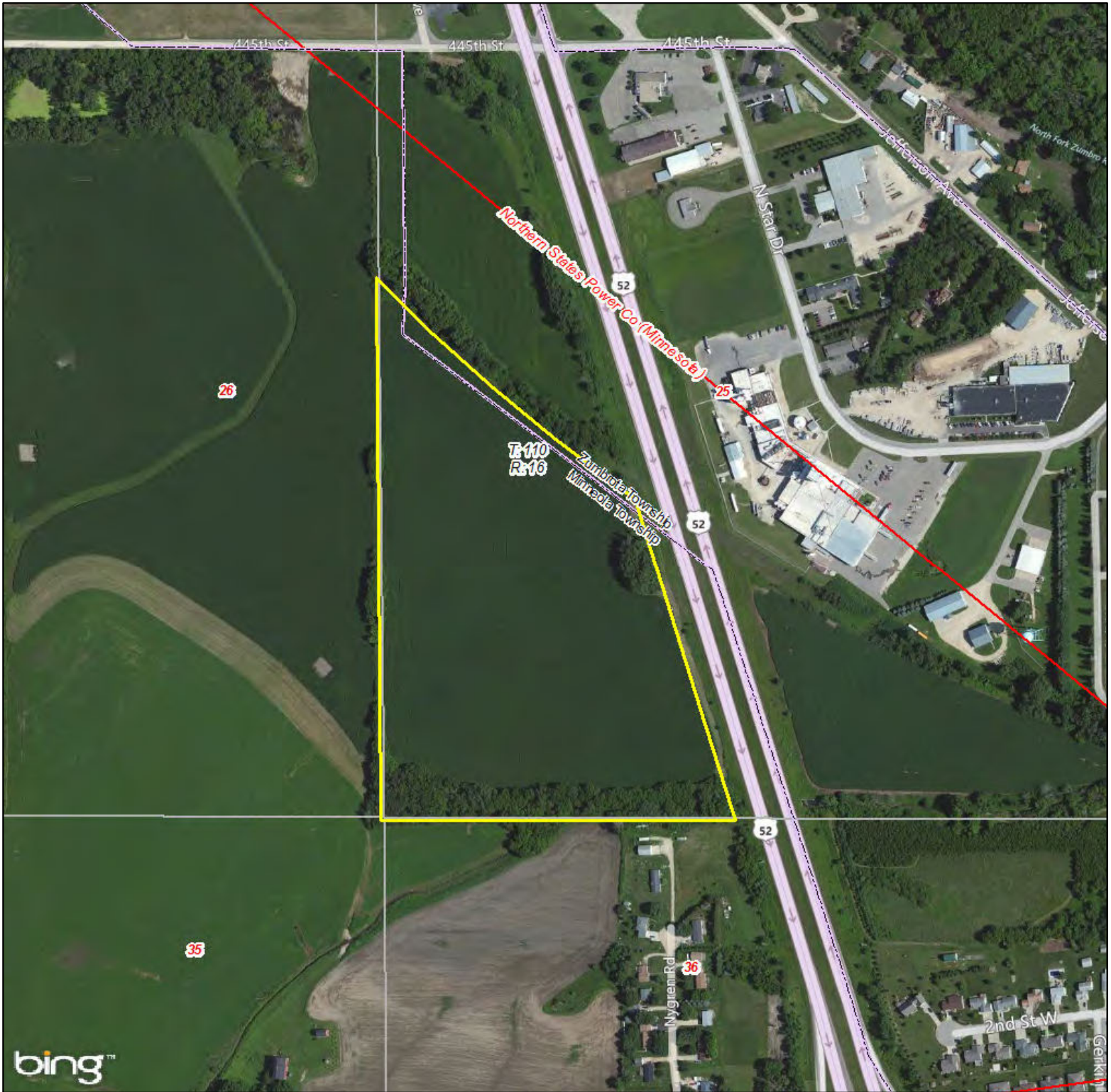


Data Sources:  
Ventyx, Bing Maps,  
Public Utilities Commission




Xcel Service Areas

# Zumbrota




**LEGEND**

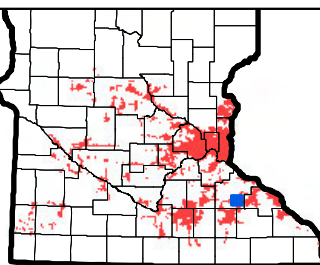
- Expected Project Area
- Existing Transmission Lines
  - 69 kV
  - 230 kV
  - 115 kV
  - 345 kV
  - 161 kV
  - 500 kV
- XCEL Service Area (Inset Map)



Data Sources:  
Ventyx, Bing Maps,  
Public Utilities Commission



0 185 370 740  
Feet



**Xcel Service Areas**