

**Minnesota Public Utilities Commission**  
*Staff Briefing Papers*

---

Meeting Date: December 19, 2013 .....Agenda Item \*5

Company: Minnesota Power

Docket No. E-015/TL-12-1123

In the Matter of the Application of Minnesota Power for a Route Permit for  
the 39 Line 115 kV Transmission Line Project in St. Louis County, Minnesota

Issue(s): Should the Commission find that the environmental assessment and the record created at the public hearing adequately address the issues identified in the scoping decision? Should the Commission issue a route permit identifying a specific route and permit conditions for the 39 Line 115 kV High Voltage Transmission Line Project in St. Louis County?

Staff: Tricia DeBleeckere | 651-201-2254 | [tricia.debleeckere@state.mn.us](mailto:tricia.debleeckere@state.mn.us)

---

**Relevant Documents**

Minnesota Power Application for a Route Permit (5 Parts) .....November 30, 2012  
Commission Order Finding Application Complete ..... January 16, 2013  
Environmental Assessment Scoping Decision..... April 18, 2013  
Environmental Assessment Report (14 Parts) .....July 19, 2013  
Administrative Law Judge Report .....November 15, 2013

**Attached Documents**

Proposed High-Voltage Transmission Line Route Permit

The attached materials are work papers of the Commission staff. They are intended for use by the Minnesota Public Utilities Commission and are based upon information already in the record unless noted otherwise.

This document can be made available in alternative formats (i.e., large print or audio) by calling 651-296-0406 (voice). Persons with hearing or speech disabilities may call us through their preferred Telecommunications Relay Service.

---

**I. Statement of the Issues**

---

Should the Commission find that the environmental assessment and the record created at the public hearing adequately address the issues identified in the scoping decision? Should the Commission issue a route permit identifying a specific route and permit conditions for the 39 Line 115 kV Transmission Line Project in St. Louis County?

---

**II. Proposed Project Overview**

---

Minnesota Power (Applicant) has proposed to construct an approximately 3-mile long, 115 kV high voltage transmission line (HVTL) from the Applicant's existing 39 Line in the city of Eveleth to Minnesota Power's existing 37 Line northwest of the city of Leonidas in St. Louis County. At the request of United Taconite, the Applicant also proposed to remove approximately 1.9 miles of the existing 39 Line that runs through United Taconite's north pit.

---

**III. Procedural History**

---

On November 30, 2012, Minnesota Power filed a route permit application under the alternative permitting process<sup>1</sup> for the 39 Line 115 kV Transmission Line Project.

On January 16, 2013, the Commission found the application complete and referred the application to the Office of Administrative Hearings for summary proceedings under Minn. R. 7850.3800, to develop the record.

On February 25, 2013, a public information and environmental assessment scoping meeting was held at the Leonidas Community Center in Leonidas, Minnesota.

On April 18, 2013, the deputy commissioner of the Department of Commerce issued the scoping decision for the environmental assessment.

On July 19, 2013, Department of Commerce Energy Facility Permitting (Department) filed its environmental assessment on the project.

On September 4, 2013, a public hearing was held before an administrative law judge (ALJ) at the Leonidas Community Center in Leonidas, Minnesota.

On November 15, 2013, the Office of Administrative Hearings filed the ALJ's Findings of Fact, Conclusions of Law and Recommendation.

---

<sup>1</sup> Minn. Stat. § 216E.04; Minn. R. 7850.2800 to 7850.3900.

#### **IV. Statutes and Rules**

---

Under Minn. Stat. § 216E.03, subd. 1, “No person may construct a high-voltage transmission line without a route permit from the commission. A high-voltage transmission line may be constructed only along a route approved by the commission.”

Minn. Stat. § 216E.01, subd. 4, defines a high-voltage transmission line as “...a conductor of electric energy and associated facilities designed for and capable of operation at a nominal voltage of 100 kilovolts or more and is greater than 1,500 feet in length.” The project as proposed by Minnesota Power would consist of approximately three miles of new 115 kV transmission line and therefore requires a route permit from the Commission.

The proposed project qualifies for alternative review under Minn. Stat. § 216E.04 because it is a high-voltage transmission line between 100 and 200 kV.<sup>2</sup> The alternate review process is a six month process that does require the applicant to propose alternative routes.<sup>3</sup>

Under Minn. Stat. § 216B.243, subd. 2, “No large energy facility shall be sited or constructed in Minnesota without the issuance of a certificate of need by the commission...” Because the proposed transmission line capacity is under 200 kV, is less than ten miles in length and does not cross a state border, a certificate of need is not required.<sup>4</sup>

The proposed project is subject to Minn. Stat. § 216E which requires that high-voltage transmission lines be routed consistent with state policy<sup>5</sup> and in a manner that “minimizes adverse human and environmental impact while insuring continuing electric power system reliability and integrity and insuring that electric energy needs are met and fulfilled in an orderly and timely fashion.”<sup>6</sup> The statute also affords the Commission the authority to specify the design, routing, right-of-way preparation, and facility construction it deems necessary, and with any other appropriate conditions when issuing a permit for a high-voltage transmission line.<sup>7</sup>

#### **V. Environmental Assessment**

---

Minn. Stat. § 216E.04, subd. 5, requires the commissioner of the Department of Commerce to prepare an environmental assessment on proposed high-voltage transmission lines between 100 and 200 kV. The environmental assessment must contain information on the potential human and environmental impacts of a proposed project and of alternative sites or routes considered and must address mitigation measures for identified impacts.

---

<sup>2</sup> Minn. R. 7850.3900, subp. 1.

<sup>3</sup> Minn. Stat. § 216E.04, subd. 3.

<sup>4</sup> Minn. Stat. § 216B.2421, subd. 2.

<sup>5</sup> Minn. Stat. § 216E.03, subd. 7.

<sup>6</sup> Minn. Stat. § 216E.02, subd. 1.

<sup>7</sup> Minn. Stat. § 216E.04, subd. 9(b).

On April 18, 2013, the Department filed the environmental assessment scoping decision in accordance with Minn. R. 7850.3700. The scoping decision identified the issues to be addressed including any alternative sites or routes; specific potential project impacts; and a schedule for completion of the environmental assessment.<sup>8</sup>

On July 19, 2013, the Department filed the environmental assessment on the proposed project in accordance with Minn. R. 7850.3700. The environmental assessment contained a comprehensive description of the proposed project; a discussion of potential impacts of the project on the human and natural environment; reasonable mitigation measures that could be implemented to minimize any identified adverse impacts; and required permits and approvals.<sup>9</sup>

## **VI. Public Hearing**

---

Administrative Law Judge, Jeanne M. Cochran with the Office of Administrative Hearings presided over a public hearing conducted on September 4, 2013, at the Leonidas Community Center in Leonidas, Minnesota.

The hearing procedures included a brief presentation to describe the proposed project; an explanation of the process to be followed; introduction of documents to be included in the record; and an opportunity for any person to present comments and to ask questions of the applicant, the EFP, and commission staff. A court reporter was present to transcribe the public hearing. Following the public hearing, a comment period for submission of written comments into the record was open until October 4, 2013.<sup>10</sup>

## **VII. Administrative Law Judge Report**

---

On November 15, 2013, the ALJ's filed her Findings of Fact, Conclusions of Law and Recommendation (ALJ Report). The ALJ's report included 154 findings of fact, including a summary of public comment and government agency participation (Findings 47 to 57); 17 conclusions of law; and a recommendation. The ALJ recommended:

*The Commission issue to Minnesota Power the following permit for the Project:  
A route permit for a high voltage transmission line along Minnesota Power's  
Proposed Route, which is described here in and depicted in Figure 2 of the  
Environmental Assessment, between the existing 39 Line and existing 37 Line in  
St. Louis County, Minnesota, near the city of Eveleth, with a route width up to 500 feet*

---

<sup>8</sup> Minn. R. 7850.3700, subp. 3.

<sup>9</sup> Minn. R. 7850.3700, subp. 4.

<sup>10</sup> Minn. Stat § 216E.04, subd. 6; Minn. R. 7850.3800.

*wide, and that includes the mitigation measures and conditions set forth above.*

The ALJ also concluded that the environmental assessment prepared by EFP as appropriate and satisfies the requirements of Minn. R. 7850.3900.

## **VIII. Exceptions**

---

No exceptions to the ALJ Report were filed.

## **IX. Staff Discussion**

---

Commission staff has reviewed the record and reached its conclusions and recommendations based on information provided in Minnesota Power's route permit application, the analysis provided in the environmental assessment on the proposed project, comments and briefs received in this record, and the report of the administrative law judge.

### **A. Environmental Assessment Completeness**

Staff has reviewed the environmental assessment and agrees with the ALJ that the Department has conducted an appropriate environmental analysis of the project for purposes of this route permit proceeding and the environmental assessment satisfies Minn. R. 7850.3700. Specifically, the environmental assessment and the record created at the public hearing addresses the issues identified in the scoping decision.<sup>11</sup>

### **B. Exceptions to ALJ Report**

#### *1. Proposed Modifications to ALJ Report*

Staff has no proposed exceptions to the ALJ Report.

### **C. Route Permit Language Modifications**

On October 18, 2013, EFP filed Initial Arguments and Analysis<sup>12</sup> on the project during the reply brief and comment period designated by the ALJ in this matter. In its Arguments and Analysis, EFP provided proposed route permit language in the following sections: Vegetation Management, Erosion Control, Wetlands/water Resources and Archaeological. Commission staff incorporated all EFP proposed modifications into the permit. These conditions satisfy the

---

<sup>11</sup> Minn. R. 7850.3900, subp 2.

<sup>12</sup> EFP Initial Arguments and Analysis (October 18, 2013), Docket ID [201310-92685-01](#).

concerns of the Minnesota Department of Natural Resources (DNR) raised during the open comment period.

Staff based the route permit general conditions off the last issued route permit issued by the Commission, the *Xcel Energy Chaska Area HVTL Route Permit*. Staff incorporated minor modifications also being proposed in the Kohlman to Goose Lake HVTL Route Permit (see Item #1 on today's agenda) - the modifications related to the ordering of permit conditions only.

All route permit conditions suggested by the ALJ are included as Commission standard permit conditions.

## **X. Commission Decision Alternatives**

---

### **A. Findings of Fact, Conclusions of Law and Recommendation**

1. Approve and adopt the ALJ's Findings of Fact, Conclusions of Law and Recommendation for Minnesota Power's 39 Line HVTL Project in St. Louis County, Minnesota.
2. Take some other action deemed appropriate.

### **B. Environmental Assessment**

1. Determine that the environmental assessment and the record created at the public hearing addresses the issues identified in the environmental assessment scoping decision.
2. Take some other action deemed appropriate.

### **C. Transmission Line Route Permit**

1. Issue a high-voltage transmission line route permit identifying a specific route and permit conditions to Minnesota Power for the 39 Line 115 kV Transmission Line Project in St. Louis County.
2. Take some other action deemed appropriate.

**Staff Recommendation:** A1, B1, C1.

**STATE OF MINNESOTA PUBLIC UTILITIES COMMISSION**

**ROUTE PERMIT FOR CONSTRUCTION OF A HIGH-VOLTAGE TRANSMISSION  
LINE AND ASSOCIATED FACILITIES**

**IN  
ST. LOUIS COUNTY**

**ISSUED TO  
MINNESOTA POWER**

**PUC DOCKET NO. E-015/TL-12-1123**

In accordance with the requirements of Minnesota Statutes Chapter 216E and Minnesota Rules Chapter 7850, this route permit is hereby issued to:

**MINNESOTA POWER**

Minnesota Power is authorized by this route permit to construct approximately a 3.0-mile long, 115 kV high voltage transmission line (HVTL) from Minnesota Power's existing 39 Line in the City of Eveleth to Minnesota Power's existing 37 Line northwest of the city of Leonidas in St. Louis County. Minnesota Power is to remove approximately 1.9 miles of existing 39 Line that runs through United Taconite's north mining pit.

The transmission line and associated facilities shall be built within the route identified in this permit and as portrayed on the official route maps, and in compliance with the conditions specified in this permit.

Approved and adopted this \_\_\_\_ day of \_\_\_\_\_

**BY ORDER OF THE COMMISSION**

---

Burl W. Haar,  
Executive Secretary

# CONTENTS

1.0	ROUTE PERMIT.....	1
2.0	PROJECT DESCRIPTION.....	1
2.1	Project Location.....	1
2.2	Associated Facilities and Substations.....	1
2.3	Structures and Conductors.....	1
3.0	DESIGNATED ROUTE.....	2
3.1	Right-of-Way.....	2
4.0	GENERAL CONDITIONS.....	3
4.1	Plan and Profile.....	3
4.2	Construction Practices.....	3
4.2.1	Field Representative.....	3
4.2.2	Local Governments.....	4
4.2.3	Cleanup.....	4
4.2.4	Noise.....	4
4.2.5	Vegetation Removal.....	4
4.2.6	Aesthetics.....	5
4.2.7	Erosion Control.....	5
4.2.8	Wetlands and Water Resources.....	6
4.2.9	Archaeological and Historic Resources.....	6
4.2.10	Avian Mitigation.....	7
4.2.11	Temporary Work Space.....	7
4.2.12	Restoration.....	7
4.2.13	Notice of Permit.....	8
4.3	Periodic Status Reports.....	8
4.4	Complaint Procedures.....	8
4.5	Notification to Landowners.....	8
4.6	Completion of Construction.....	8
4.6.1	Notification to Commission.....	8
4.6.2	As-Builts.....	8
4.6.3	GPS Data.....	9
4.7	Electrical Performance Standards.....	9
4.7.1	Grounding.....	9
4.7.2	Electric Field.....	9
4.7.3	Interference with Communication Devices.....	9
4.8	Other Requirements.....	10



4.8.1	Applicable Codes .....	10
4.8.2	Other Permits.....	10
4.8.3	Pre-emption .....	10
4.9	Delay in Construction .....	10
5.0	SPECIAL CONDITIONS.....	10
5.1.1	Vegetation Management Plan .....	10
5.1.2	Wildlife-Friendly Erosion Control Materials.....	11
6.0	PERMIT AMENDMENT.....	11
7.0	TRANSFER OF PERMIT .....	11
8.0	REVOCATION OR SUSPENSION OF THE PERMIT .....	11

**FIGURES**

Official Route Maps

**ATTACHMENTS**

Attachment A – Complaint Procedures for High-Voltage Transmission Lines  
Attachment B – Compliance Filing Procedure for Permitted Energy Facilities

## **1.0 ROUTE PERMIT**

The Minnesota Public Utilities Commission (Commission) hereby issues this route permit to Minnesota Power (Permittee) pursuant to Minnesota Statutes Chapter 216E and Minnesota Rules Chapter 7850. This permit authorizes Minnesota Power to construct an approximately 3.0-mile, 115 kV high voltage transmission line (HVTL) from the existing 39 Line in the City of Eveleth to the existing 37 Line northwest of the city of Leonidas in St. Louis County and to remove approximately 1.9 miles of the existing 39 Line that runs through United Taconite's north mining pit, as identified in the attached route permit maps, hereby incorporated into this document.

## **2.0 PROJECT DESCRIPTION**

The installation of 3.0 miles of 115 kV HVTL is needed to allow the existing line to be removed without degrading the area's high voltage transmission system. Two structures are proposed for the new 115 kV line, wooden monopoles and wooden H-frame. Monopole structures are proposed for the portion of the line located within the active United Taconite mining operation and along highway 101. The Project includes removing approximately 1.9 miles of existing 115 kV HVTL to accommodate United Taconite's plans to extend its mining operations located west of the City of Eveleth.

### **2.1 Project Location**

The Project extends from Minnesota Power's existing 39 Line connection west of the City of Eveleth to the connection with the existing 37 Line northwest of the City of Leonidas.

### **2.2 Associated Facilities and Substations**

No associated facilities are proposed as part of the project.

### **2.3 Structures and Conductors**

Two structures are proposed for the new 115 kV line, wooden monopoles and wooden H-frame. Monopole structures are proposed for the portion of the line located within the active United Taconite mining operation and along highway 101. The monopole structures range in height from 60 to 105 feet above ground, and the spans between the structures will range from 250 to 350 feet. The H-frame structures utilize two braced wood poles and suspension insulators. The H-frame structures range in height from 60 to 70 feet above ground, and the spans between these structures range from 500 to 1,000 feet.

Pole height and span length for both structure types vary depending on topography and environmental constraints within the proposed right-of-way. The conductor for the proposed line will include three phases of Aluminum Core Steel Reinforced cable accompanied by shield wires for lighting protection.

The transmission line shall be designed to meet or exceed all relevant local and state codes, the National Electric Safety Code (NESC), and North American Electric Reliability Corporation (NERC) requirements. This includes standards relating to clearances to ground, clearance to crossing utilities, clearance to buildings, strength of materials, clearances over roadways, right-of-way widths, and permit requirements. The transmission line shall be equipped with protective devices to safeguard the public if an accident occurs.

### **3.0 DESIGNATED ROUTE**

The route designated by the Commission in this permit is the route described below and shown on the route maps attached to this permit. The route is generally described as follows:

The route begins at Minnesota Power's existing 39 Line in the City of Eveleth, proceeds southerly to Highway 101, follows Highway 101 to the west past 13<sup>th</sup> Avenue West where it deviates from Highway 101 (to the north) and proceeds west to Minnesota Power's existing 37 Line northwest of the city of Leonidas in St. Louis County.

The Commission authorizes a route width of up to 500 feet for the project, as depicted on the project maps.

### **3.1 Right-of-Way**

The approved right-of-way width for the project is up to 100 feet. The Permittee will utilize its existing rights-of-way associated with the single circuit 115 kV transmission line being replaced to the greatest extent possible.

This permit anticipates that the right-of-way will generally conform to the anticipated alignment as noted on the attached route permit maps unless changes are requested by individual landowners or unforeseen conditions are encountered or are otherwise provided for by this permit.

Any alignment modifications within the designated route shall be located so as to have comparable overall impacts relative to the factors in Minn. R. 7850.4100, as does the alignment identified in this permit, and shall be specifically identified and documented in and approved as part of the plan and profile submitted pursuant to section 4.1 of this permit.

Where the transmission line route parallels existing highway and other road rights-of-way, the transmission line right-of-way shall occupy and utilize the existing right-of-way to the maximum extent possible, consistent with the criteria in Minn. R. 7850.4100, the other requirements of this permit, and for highways under the jurisdiction of the Minnesota Department of Transportation (Mn/DOT) rules, policies, and procedures for accommodating utilities in trunk highway rights-of-way.

#### **4.0 GENERAL CONDITIONS**

The Permittee shall comply with the following conditions during construction of the transmission line and associated facilities over the life of this permit.

##### **4.1 Plan and Profile**

At least 30 calendar days before right-of-way preparation for construction begins on any segment or portion of the project, the Permittee shall provide the Commission with a plan and profile of the right-of-way and the specifications and drawings for right-of-way preparation, construction, structure specifications and locations, cleanup, and restoration for the transmission line. The documentation shall include maps depicting the plan and profile including the right-of-way, alignment, and structures in relation to the route and alignment approved per this permit.

The Permittee may not commence construction until the 30 days has expired or until the Commission has advised the Permittee in writing that it has completed its review of the documents and determined that the planned construction is consistent with this permit. If the Permittee intends to make any significant changes in its plan and profile or the specifications and drawings after submission to the Commission, the Permittee shall notify the Commission at least five days before implementing the changes. No changes shall be made that would be in violation of any of the terms of this permit.

##### **4.2 Construction Practices**

The Permittee shall follow those specific construction practices and material specifications described in Minnesota Power's application to the Commission for a route permit for the *39 Line Transmission Line Project*, dated November 30, 2013, unless this permit establishes a different requirement in which case this permit shall prevail.

###### **4.2.1 Field Representative**

At least 14 days prior to commencing construction, the Permittee shall advise the Commission in writing of the person or persons designated to be the field representative

for the Permittee with the responsibility to oversee compliance with the conditions of this permit during construction.

The field representative's address, phone number, emergency phone number, and email shall be provided to the Commission and shall be made available to affected landowners, residents, public officials and other interested persons. The Permittee may change the field representative at any time upon written notice to the Commission.

#### 4.2.2 Local Governments

During construction, the Permittee shall minimize any disruption to public services or public utilities. To the extent disruptions to public services or public utilities occur these would be temporary and the Permittee will restore service promptly. Where any impacts to utilities have the potential to occur the Permittee will work with both landowners and local agencies to determine the most appropriate transmission structure placement.

The Permittee shall cooperate with county and city road authorities to develop appropriate signage and traffic management during construction.

#### 4.2.3 Cleanup

All waste and scrap that is the product of construction shall be removed from the area and properly disposed of upon completion of each task. Personal litter, including bottles, cans, and paper from construction activities shall be removed on a daily basis.

#### 4.2.4 Noise

Construction and routine maintenance activities shall be limited to daytime working hours, as defined in Minn. R. 7030.0200, to ensure nighttime noise level standards will not be exceeded.

#### 4.2.5 Vegetation Removal

The Permittee shall minimize the number of trees to be removed in selecting the right-of-way specifically preserving to the maximum extent practicable windbreaks, shelterbelts, living snow fences, and vegetation in areas such as trail and stream crossings where vegetative screening may minimize aesthetic impacts, to the extent that such actions do not violate sound engineering principles or system reliability criteria.

Tall growing species located within the transmission line right-of-way that endanger the safe and reliable operation of the transmission facility will be removed by the Permittee. The Permittee shall leave undisturbed, to the extent possible, existing low growing species in the right-of-way or replant such species in the right-of-way to blend the difference between the right-of-way and adjacent areas, to the extent that the low growing vegetation that will not pose a threat to the transmission facility or impede construction.

The Permittee shall avoid construction and maintenance practices, particularly the use of fertilizer, herbicides or other pesticides, that are inconsistent with the landowner's or tenant's use of the land.

#### 4.2.6 Aesthetics

The Permittee shall consider input pertaining to visual impacts from landowners or land management agencies prior to final location of structures, rights-of-way, and other areas with the potential for visual disturbance. Care shall be used to preserve the natural landscape, minimize tree removal and prevent any unnecessary destruction of the natural surroundings in the vicinity of the project during construction and maintenance. Structures shall be placed at a distance, consistent with sound engineering principles and system reliability criteria, from intersecting roads, highway, or trail crossings and could cross roads to minimize or avoid impacts.

#### 4.2.7 Erosion Control

The Permittee shall implement those erosion prevention and sediment control practices recommended by the Minnesota Pollution Control Agency (MPCA) Construction Stormwater Program.

The Permittee shall minimize erosion and sedimentation during construction and shall employ perimeter sediment controls, protect exposed soil by promptly planting, seeding, using erosion control blankets and turf reinforcement mats, stabilizing slopes, protecting storm drain inlets, protecting soil stockpiles, and controlling vehicle tracking. Contours shall be graded as required so that all surfaces provide for proper drainage, blend with the natural terrain, and are left in a condition that will facilitate re-vegetation and prevent erosion. All areas disturbed during construction of the facilities shall be returned to pre-construction conditions.

When utilizing seed to establish temporary and permanent vegetative cover on exposed soil the Permittee shall select site appropriate seed certified to be free of noxious weeds.

To the extent possible, the Permittee shall use native seed mixes. The Permittee shall consult with landowners on the selection and use of seed for replanting.

The Permittee shall employ best management practices to avoid the potential spread of invasive species within and adjacent to the right-of-way during construction and maintenance of the transmission lines.

Where larger areas of one acre or more are disturbed or other areas designated by the MPCA, the Permittee shall obtain a National Pollutant Discharge Elimination System (NPDES)/State Disposal System (SDS) Construction Stormwater permit from the MPCA.

#### 4.2.8 Wetlands and Water Resources

Wetland impact avoidance measures that shall be implemented during design and construction of the transmission line will include spacing and placing the power poles at variable distances to span and avoid wetlands, watercourses, and floodplains.

Unavoidable wetland impacts as a result of the placement of poles shall be limited to the immediate area around the poles. To minimize impacts, construction in wetland areas shall occur during frozen ground conditions. When construction during winter is not possible, wooden or composite mats shall be used to protect wetland vegetation. Soil excavated from the wetlands and riparian areas shall be contained and not placed back into the wetland or riparian area.

Wetlands and riparian areas shall be accessed using the shortest route possible in order to minimize travel through wetland areas and prevent unnecessary impacts. No staging or stringing set up areas shall be placed within or adjacent to wetlands or water resources, as practicable. Power pole structures shall be assembled on upland areas before they are brought to the site for installation. Areas disturbed by construction activities shall be restored to pre-construction conditions.

All requirements of the U.S. Army Corps of Engineers (wetlands under federal jurisdiction), Minnesota Department of Natural Resources (Public Waters/Wetlands), and County (wetlands under the jurisdiction of the Minnesota Wetland Conservation Act) shall be met.

#### 4.2.9 Archaeological and Historic Resources

The Permittee shall make every effort to avoid impacts to identified archaeological and historic resources when installing the high-voltage transmission line on the approved route. In the event that a resource is encountered, the Permittee shall contact and consult

with the State Historic Preservation Office (SHPO). Where feasible, avoidance of the resource is required. Where not feasible, mitigation must include an effort to minimize project impacts on the resource consistent with SHPO and State Archaeologist requirements.

Prior to construction, workers shall be trained about the need to avoid cultural properties, how to identify cultural properties, and procedures to follow if undocumented cultural properties, including gravesites, are found during construction.

#### 4.2.10 Avian Mitigation

The Permittee's standard transmission design shall incorporate adequate spacing of conductors and grounding devices in accordance with Avian Power Line Interaction Committee standards to eliminate the risk of electrocution to raptors with larger wingspans that may simultaneously come in contact with a conductor and grounding devices.

#### 4.2.11 Temporary Work Space

The Permittee shall limit temporary easements to special construction access needs and additional staging or lay-down areas required outside of the authorized right-of-way. Temporary space shall be selected to limit the removal and impacts to vegetation.

Temporary easements outside of the authorized transmission line right-of-way will be obtained from affected landowners through rental agreements and are not provided for in this permit.

Temporary driveways may be constructed between the roadway and the structures to minimize impact using the shortest route possible. Construction mats should also be used to minimize impacts on access paths and construction areas.

#### 4.2.12 Restoration

The Permittee shall restore the right-of-way, temporary work spaces, access roads, abandoned right-of-way, and other public or private lands affected by construction of the transmission line. Restoration within the right-of-way must be compatible with the safe operation, maintenance, and inspection of the transmission line. Within 60 days after completion of all restoration activities, the Permittee shall advise the Commission in writing of the completion of such activities.



The Permittee shall fairly compensate landowners for damage to crops, fences, landscaping, drain tile, or other damages sustained during construction.

#### 4.2.13 Notice of Permit

The Permittee shall inform all employees, contractors, and other persons involved in the transmission line construction of the terms and conditions of this permit.

### **4.3 Periodic Status Reports**

The Permittee shall report to the Commission on progress regarding finalization of the route, design of structures, and construction of the transmission line. The Permittee need not report more frequently than monthly.

### **4.4 Complaint Procedures**

Prior to the start of construction, the Permittee shall submit to the Commission the procedures that will be used to receive and respond to complaints. The procedures shall be in accordance with the requirements set forth in the complaint procedures attached to this permit.

### **4.5 Notification to Landowners**

The Permittee shall provide all affected landowners with a copy of this permit and, as a separate information piece, the complaint procedures at the time of the first contact with the landowners after issuance of this permit. The Permittee shall contact landowners prior to entering the property or conducting maintenance along the route.

The Permittee shall work with landowners to locate the high-voltage transmission line to minimize the loss of agricultural land, forest, and wetlands, and to avoid homes and farmsteads.

### **4.6 Completion of Construction**

#### 4.6.1 Notification to Commission

At least three days before the line is to be placed into service, the Permittee shall notify the Commission of the date on which the line will be placed into service and the date on which construction was complete.

#### 4.6.2 As-Builts

Within 60 days after completion of construction, the Permittee shall submit copies of all final as-built plans and specifications developed during the project.

#### 4.6.3 GPS Data

Within 60 days after completion of construction, the Permittee shall submit to the Commission, in the format requested by the Commission, geo-spatial information (e.g., ArcGIS compatible map files, GPS coordinates, associated database of characteristics) for all structures associated with the transmission line and each substation connected.

### 4.7 Electrical Performance Standards

#### 4.7.1 Grounding

The Permittee shall design, construct, and operate the transmission line in a manner so that the maximum induced steady-state short-circuit current shall be limited to five milliamperes root mean square (rms) alternating current between the ground and any non-stationary object within the right-of-way, including but not limited to large motor vehicles and agricultural equipment.

All fixed metallic objects on or off the right-of-way, except electric fences that parallel or cross the right-of-way, shall be grounded to the extent necessary to limit the induced short-circuit current between ground and the object so as not to exceed one milliamperes rms under steady state conditions of the transmission line and to comply with the ground fault conditions specified in the NESC. The Permittee shall address and rectify any induced current problems that arise during transmission line operation.

#### 4.7.2 Electric Field

The transmission line shall be designed, constructed, and operated in such a manner that the electric field measured one meter above ground level immediately below the transmission line shall not exceed 8.0 kV/m rms.

#### 4.7.3 Interference with Communication Devices

If interference with radio or television, satellite, wireless internet, GPS-based agriculture navigation systems or other communication devices is caused by the presence or operation of the transmission line, the Permittee shall take whatever action is feasible to restore or provide reception equivalent to reception levels in the immediate area just prior to the construction of the line.

## **4.8 Other Requirements**

### **4.8.1 Applicable Codes**

The Permittee shall comply with applicable NERC planning standards and requirements of the NESC including clearances to ground, clearance to crossing utilities, clearance to buildings, right-of way widths, erecting power poles, and stringing of transmission line conductors.

### **4.8.2 Other Permits**

The Permittee shall comply with all applicable state rules and statutes. The Permittee shall obtain all required permits for the project and comply with the conditions of these permits. A list of the required permits is included in the permit application. The Permittee shall submit a copy of such permits to the Commission upon request.

### **4.8.3 Pre-emption**

Pursuant to Minn. Stat. § 216E.10, this route permit shall be the sole approval required to be obtained by the Permittee for construction of the transmission facilities and this permit shall supersede and preempt all zoning, building, or land use rules, regulations, or ordinances promulgated by regional, county, local and special purpose government.

## **4.9 Delay in Construction**

If the Permittee has not commenced construction or improvement of the route within four years after the date of issuance of this permit the Permittee shall file a report on the failure to construct and the Commission shall consider suspension of the permit in accordance with Minn. R. 7850.4700.

## **5.0 SPECIAL CONDITIONS**

The Permittee shall provide a report to the Commission as part of the plan and profile submission that describes the actions taken and mitigative measures developed regarding the project and the following special conditions. Special conditions shall take precedence over other conditions of this permit should there be a conflict.

### **5.1.1 Vegetation Management Plan**

The Permittee shall consult and coordinate with the Minnesota Department of Natural Resources (DNR) on the development of a vegetation management plan to minimize the project impacts on vegetation and potential for introduction of invasive species. The plan shall be submitted as a compliance filing along with the plan and profile deliverable.

#### 5.1.2 Wildlife-Friendly Erosion Control Materials

The Permittee, in cooperation with the DNR, shall use wildlife-friendly erosion control materials in areas known to be inhabited by wildlife species (birds, small mammals, reptiles, and amphibians) susceptible to entanglement in plastic netting.<sup>1</sup>

### **6.0 PERMIT AMENDMENT**

This permit may be amended at any time by the Commission. Any person may request an amendment of the conditions of this permit by submitting a request to the Commission in writing describing the amendment sought and the reasons for the amendment. The Commission will mail notice of receipt of the request to the Permittee. The Commission may amend the conditions after affording the Permittee and interested persons such process as is required.

### **7.0 TRANSFER OF PERMIT**

The Permittee may request at any time that the Commission transfer this permit to another person or entity. The Permittee shall provide the name and description of the person or entity to whom the permit is requested to be transferred, the reasons for the transfer, a description of the facilities affected, and the proposed effective date of the transfer.

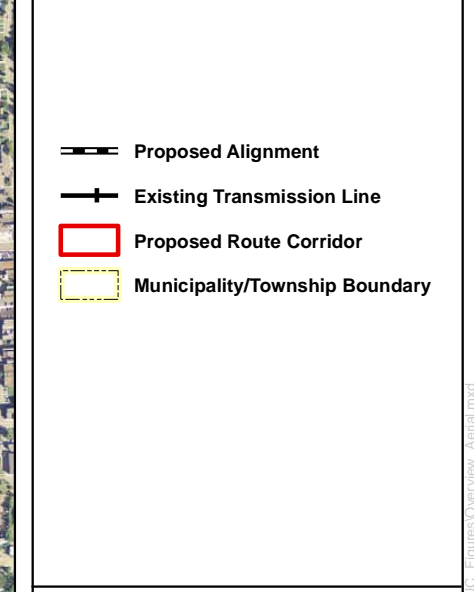
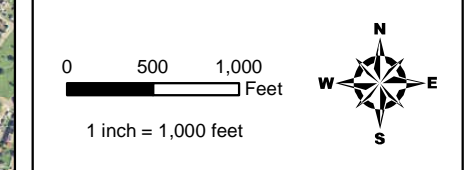
The person to whom the permit is to be transferred shall provide the Commission with such information as the Commission shall require to determine whether the new Permittee can comply with the conditions of the permit. The Commission may authorize transfer of the permit after affording the Permittee, the new Permittee, and interested persons such process as is required.

### **8.0 REVOCATION OR SUSPENSION OF THE PERMIT**

The Commission may initiate action to revoke or suspend this permit at any time. The Commission shall act in accordance with the requirements of Minn. R. 7850.5100, to revoke or suspend the permit.

---

<sup>1</sup> <http://files.dnr.state.mn.us/eco/nongame/wildlife-friendly-erosion-control.pdf>



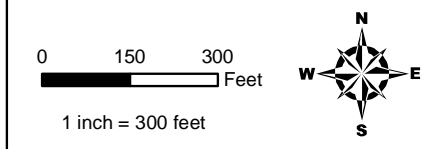
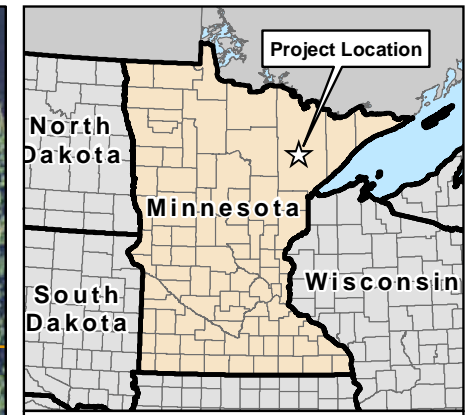
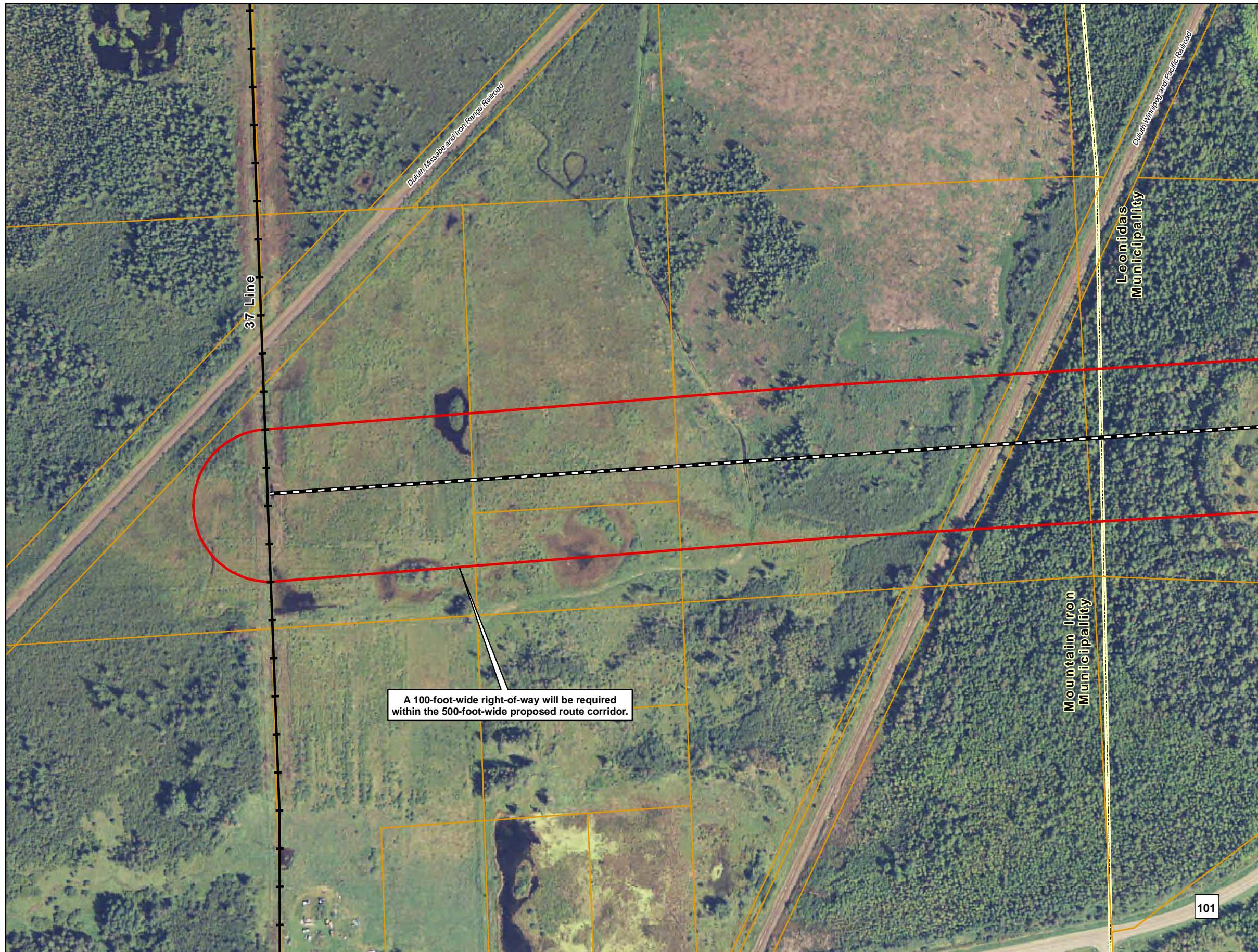
**Figure 1**  
**Minnesota Power**  
**39 Line Project**  
**St. Louis County, Minnesota**

PROJECT LOCATION  
 MAP - AERIAL



Source: MN Power  
 FSA - NAIP 2010 Aerial

Date: (1/17/2012) Source: Z:\Clients\MN\_Power\Line\_39\_Project\GIS\201209\POC\_Figures\Overview\_Aerial.mxd



- Proposed Centerline
- Existing Transmission Line
- Proposed Route Corridor
- Parcel Boundary
- Municipality/Township Boundary

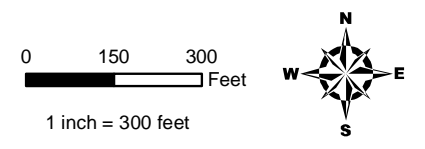
**Figure 2**  
**Minnesota Power**  
**39 Line Project**  
**St. Louis County, Minnesota**

PROJECT LOCATION  
 MAP - AERIAL



Source: MN Power  
 FSA - NAIP 2010 Aerial

Date: 1/17/2012 2:09:12 PM Source: Z:\Clients\MN\_Power\Line\_39\_Project\ArcGIS\2012\09\Figures\Zoom\_in\_Maps.mxd



- Proposed Centerline
- Existing Transmission Line
- Proposed Route Corridor
- Parcel Boundary
- Municipality/Township Boundary

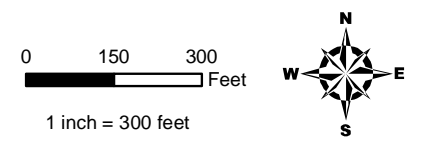
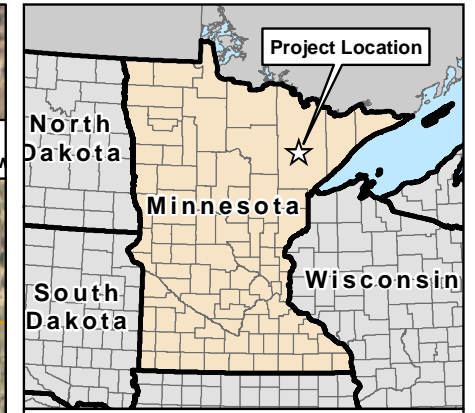
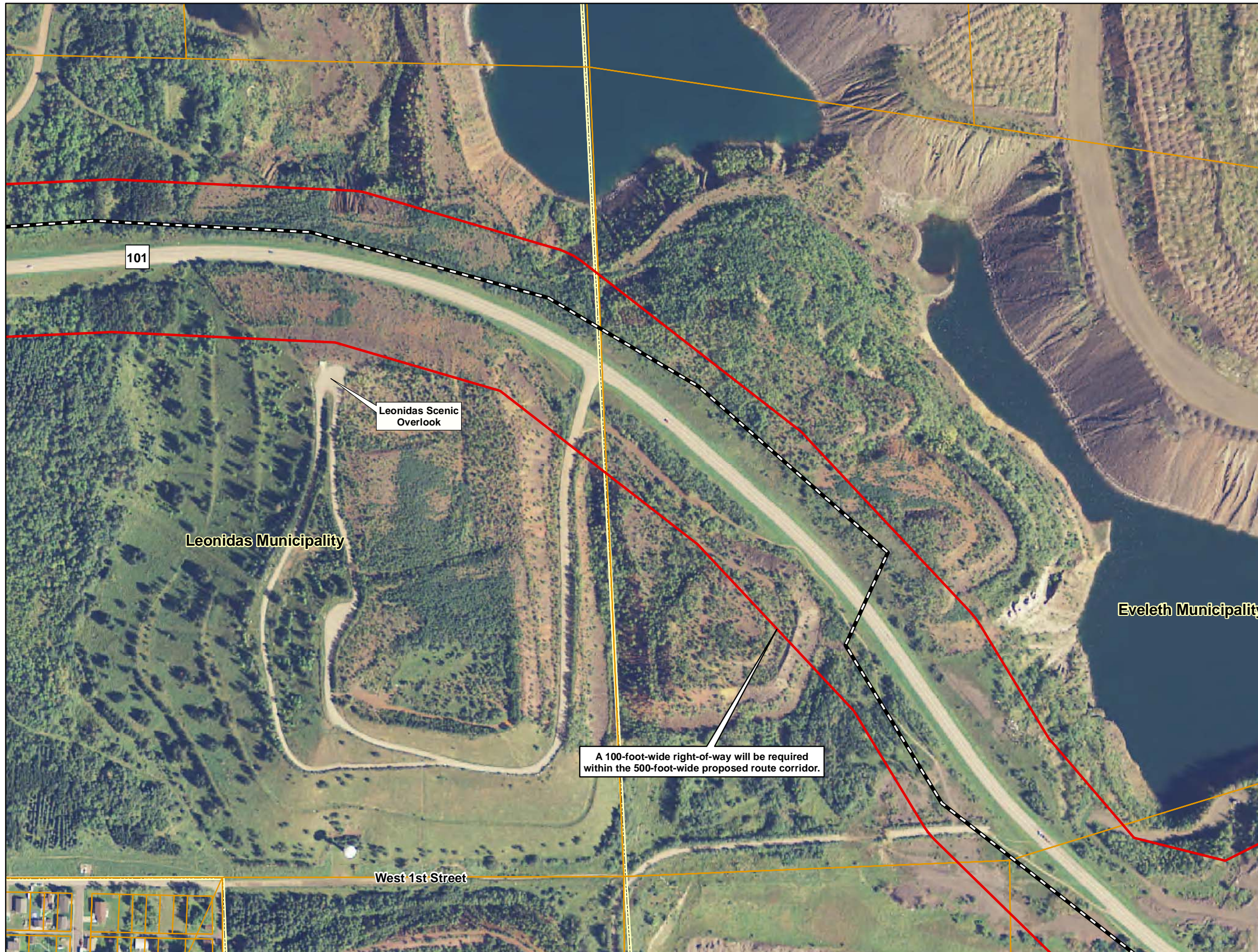
**Figure 3**  
**Minnesota Power**  
 39 Line Project  
 St. Louis County, Minnesota





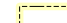
PROJECT LOCATION  
 MAP - AERIAL



Source: MN Power  
 FSA - NAIP 2010 Aerial

Date: 1/12/2012 | Source: Z:\Clients\MN\_Power\Line\_39\_Project\ArcGIS\2012\08\FPU\Figures\Zoom\_in\_Maps.mxd



-  Proposed Centerline
-  Existing Transmission Line
-  Proposed Route Corridor
-  Parcel Boundary
-  Municipality/Township Boundary

**Figure 4**  
**Minnesota Power**  
39 Line Project  
St. Louis County, Minnesota

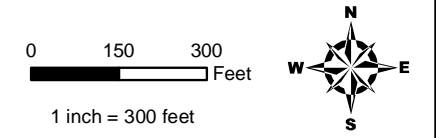
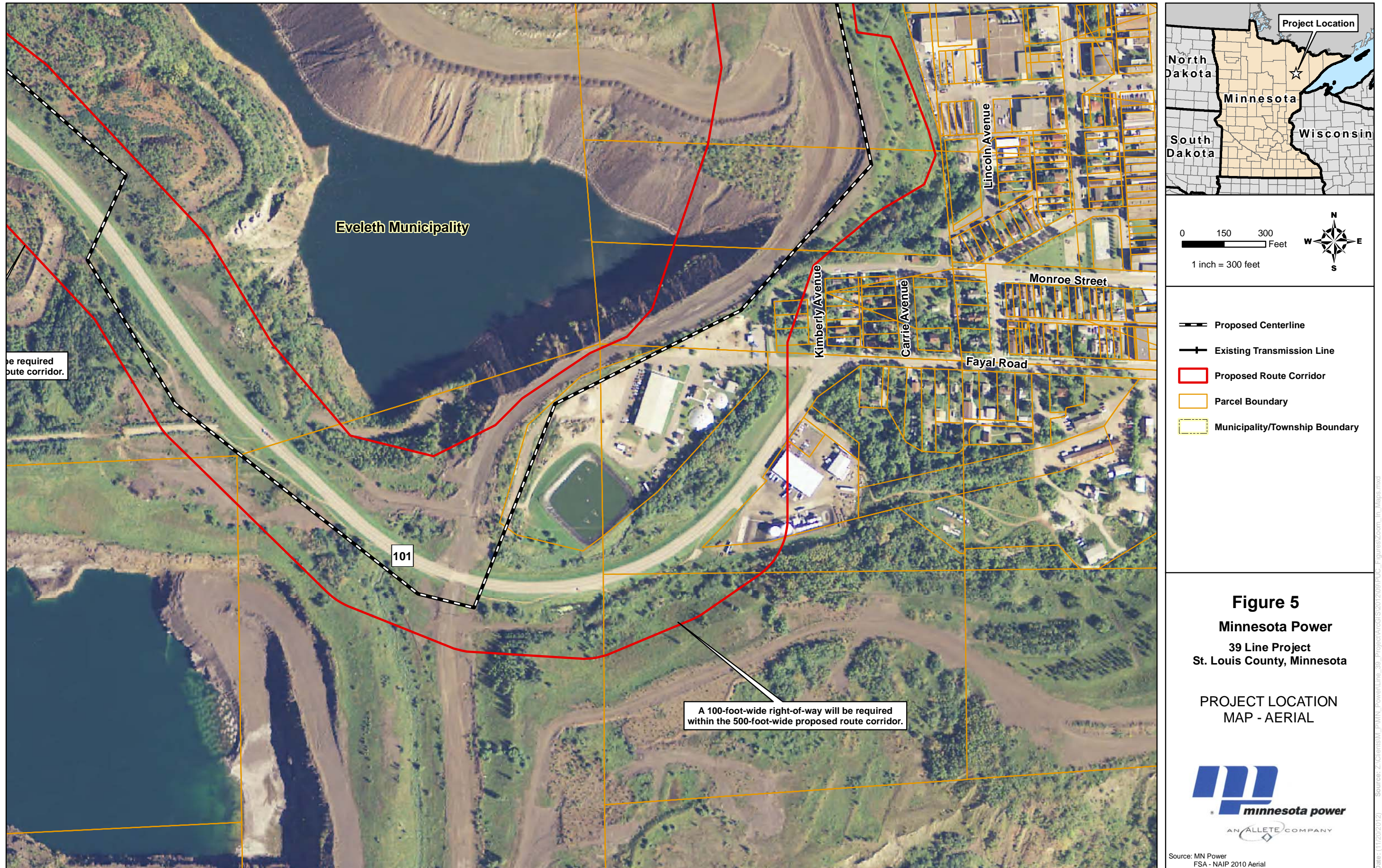
PROJECT LOCATION  
MAP - AERIAL



Source: MN Power  
FSA - NAIP 2010 Aerial

Date: 1/12/2012 1:22:00 PM Source: Z:\Clients\MN\PowerLine\_39\Project\ArcGIS\2012\08\Figures\Zoom\_in\_Maps.mxd





- Proposed Centerline
- Existing Transmission Line
- Proposed Route Corridor
- Parcel Boundary
- Municipality/Township Boundary

**Figure 5**  
**Minnesota Power**  
**39 Line Project**  
**St. Louis County, Minnesota**

PROJECT LOCATION  
 MAP - AERIAL

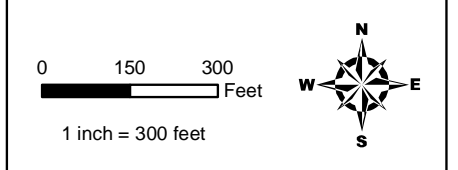
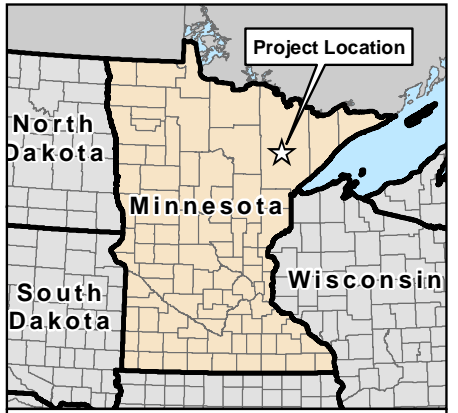


Source: MN Power  
 FSA - NAIP 2010 Aerial

Date: (11/20/2012) Source: Z:\Clients\SM\_PMIN\_PowerLine\_39\_Project\ArcGIS\2012\08\PUUC\_Figures\Zoom\_In\_Maps.mxd



A 100-foot-wide right-of-way will be required within the 500-foot-wide proposed route corridor.



- Proposed Centerline
- Existing Transmission Line
- Proposed Route Corridor
- Parcel Boundary
- Municipality/Township Boundary

**Figure 6**  
**Minnesota Power**  
 39 Line Project  
 St. Louis County, Minnesota

PROJECT LOCATION  
 MAP - AERIAL



Source: MN Power  
 FSA - NAIP 2010 Aerial

Date: 1/12/2012 2:09:22 PM Source: Z:\Clients\MN\PowerLine\_39\Project\ArcGIS\2012\09\Figures\Zoom\_in\_1\Maps.mxd

**MINNESOTA PUBLIC UTILITIES COMMISSION  
COMPLAINT HANDLING PROCEDURES FOR  
HIGH-VOLTAGE TRANSMISSION LINES**

**A. Purpose**

To establish a uniform and timely method of reporting complaints received by the permittee concerning permit conditions for site preparation, construction, cleanup and restoration, operation, and resolution of such complaints.

**B. Scope**

This document describes complaint reporting procedures and frequency.

**C. Applicability**

The procedures shall be used for all complaints received by the permittee and all complaints received by the Minnesota Public Utilities Commission (Commission) under Minn. R. 7829.1500 or Minn. R. 7829.1700 relevant to this permit.

**D. Definitions**

**Complaint:** A verbal or written statement presented to the permittees by a person expressing dissatisfaction or concern regarding site preparation, cleanup or restoration or other route and associated facilities permit conditions. Complaints do not include requests, inquiries, questions or general comments.

**Substantial Complaint:** A written complaint alleging a violation of a specific permit condition that, if substantiated, could result in permit modification or suspension pursuant to the applicable regulations.

**Unresolved Complaint:** A complaint which, despite the good faith efforts of the permittee and a person, remains to both or one of the parties unresolved or unsatisfactorily resolved.

**Person:** An individual, partnership, joint venture, private or public corporation, association, firm, public service company, cooperative, political subdivision, municipal corporation, government agency, public utility district, or any other entity, public or private, however organized.

## **E. Complaint Documentation and Processing**

1. The permittee shall designate an individual to summarize complaints for the Commission. This person's name, phone number and email address shall accompany all complaint submittals.
2. A person presenting the complaint should to the extent possible, include the following information in their communications:
  - a. name, address, phone number, and email address;
  - b. date of complaint;
  - c. tract or parcel number; and
  - d. whether the complaint relates to a permit matter or a compliance issue.
3. The permittee shall document all complaints by maintaining a record of all applicable information concerning the complaint, including the following:
  - a. docket number and project name;
  - b. name of complainant, address, phone number and email address;
  - c. precise description of property or parcel number;
  - d. name of permittee representative receiving complaint and date of receipt;
  - e. nature of complaint and the applicable permit condition(s);
  - f. activities undertaken to resolve the complaint; and
  - g. final disposition of the complaint.

## **F. Reporting Requirements**

The permittee shall commence complaint reporting at the beginning of project construction and continue through the term of the permit. The permittee shall report all complaints to the Commission according to the following schedule:

**Immediate Reports:** All substantial complaints shall be reported to the Commission the same day received, or on the following working day for complaints received after working hours. Such reports are to be directed to the Commission's Consumer Affairs Office at 1-800-657-3782 (voice messages are acceptable) or [consumer.puc@state.mn.us](mailto:consumer.puc@state.mn.us). For e-mail reporting, the email subject line should read "PUC EFP Complaint" and include the appropriate project docket number.

**Monthly Reports:** By the 15th of each month, a summary of all complaints, including substantial complaints received or resolved during the preceding month, shall be filed to Dr. Burl W. Haar, Executive Secretary, Public Utilities Commission, using the eDockets system. The eDockets system is located at: <https://www.edockets.state.mn.us/EFiling/home.jsp>

If no complaints were received during the preceding month, the permittee shall file a summary indicating that no complaints were received.

**G. Complaints Received by the Commission**

Complaints received directly by the Commission from aggrieved persons regarding site preparation, construction, cleanup, restoration, operation and maintenance shall be promptly sent to the permittee.

**H. Commission Process for Unresolved Complaints**

Commission staff shall perform an initial evaluation of unresolved complaints submitted to the Commission. Complaints raising substantial permit issues shall be processed and resolved by the Commission. Staff shall notify the permittee and appropriate persons if it determines that the complaint is a substantial complaint. With respect to such complaints, each party shall submit a written summary of its position to the Commission no later than ten (10) days after receipt of the staff notification. The complaint will be presented to the Commission for a decision as soon as practicable.

**I. Permittee Contacts for Complaints and Complaint Reporting**

Complaints may be filed by mail or email to:

Minnesota Power  
Attn:  
30 West Superior St.  
Duluth, MN 55802  
(XXX) XXX-XXXX  
XXXX@allete.com

This information shall be maintained current by informing the Commission of any changes by eFiling, as they become effective.

**MINNESOTA PUBLIC UTILITIES COMMISSION  
COMPLIANCE FILING PROCEDURE FOR  
PERMITTED ENERGY FACILITIES**

**A. Purpose**

To establish a uniform and timely method of submitting information required by the Commission energy facility permits.

**B. Scope and Applicability**

This procedure encompasses all compliance filings required by permit.

**C. Definitions**

**Compliance Filing:** A filing of information to the Commission, where the information is required by a Commission site or route permit.

**D. Responsibilities**

1. The permittee shall eFile all compliance filings with Dr. Burl W. Haar, Executive Secretary, Public Utilities Commission, through the eDockets system. The eDockets system is located at: <https://www.edockets.state.mn.us/EFiling/home.jsp>

General instructions are provided on the eDockets website. Permittees must register on the website to eFile documents.

2. All filings must have a cover sheet that includes:
  - a. Date
  - b. Name of submitter/permittee
  - c. Type of permit (site or route)
  - d. Project location
  - e. Project docket number
  - f. Permit section under which the filing is made
  - g. Short description of the filing

3. Filings that are graphic intensive (e.g., maps, engineered drawings) must, in addition to being eFiled, be submitted as paper copies and on CD. Paper copies and CDs should be sent to: 1) Dr. Burl W. Haar, Executive Secretary, Minnesota Public Utilities Commission, 121 7th Place East, Suite 350, St. Paul, MN 55101-2147, and 2) Department of Commerce, Energy Environmental Review and Analysis, 85 7th Place East, Suite 500, St. Paul, MN 55101-2198.

The Commission may request a paper copy of any eFiled document.

## PERMIT COMPLIANCE FILINGS<sup>1</sup>

PERMITTEE: Minnesota Power  
 PERMIT TYPE: HVTL Route Permit  
 PROJECT LOCATION: St. Louis County  
 PUC DOCKET NUMBER: TL-12-1123

Filing Number	Permit Section	Description of Compliance Filing	Due Date
1	4.1	Plan and profile right-of-way (ROW)	30 days before ROW preparation for construction
2	4.2.1	Contact information for field representative	14 days prior to construction
3	4.2.12	Restoration complete	60 days after completion of all restoration activities
4	4.3	Periodic status reports	Monthly
5	4.4	Complaint procedures	Prior to the start of construction
6	Complaint Handling Procedures	Complaint report	By the 15 <sup>th</sup> of each month
7	4.5	Notification to landowners	First contact with landowners after permit issuance
8	4.6.1	Notice of completion and date of placement in service	Three days prior to energizing
9	4.6.2	Provide as-built plans and specifications	Within 60 days of after completion of construction
10	4.6.3	Provide GPS data	Within 60 days after completion of construction
11	4.2.9	Notification of previously unrecorded archaeological sites	Upon discovery
12	5.1.1	Invasive species management plan	Along with plan and profile

<sup>1</sup> This compilation of permit compliance filings is provided for the convenience of the permittee and the Commission. It is not a substitute for the permit; the language of the permit controls.